

MS-500 Dumps

Microsoft 365 Security Administrator

<https://www.certleader.com/MS-500-dumps.html>



NEW QUESTION 1

HOTSPOT

You plan to configure an access review to meet the security requirements for the workload administrators. You create an access review policy and specify the scope and a group.

Which other settings should you configure? To answer, select the appropriate options in the answer area.

NOTE: Each correct selection is worth one point.

Set the frequency to:

One time	✓
Weekly	
Monthly	

To ensure that access is removed if an administrator fails to respond, configure the:

Upon completion settings	✓
Advanced settings	
Programs	
Reviewers	

- A. Mastered
- B. Not Mastered

Answer: A

Explanation:

Set the frequency to:

One time	✓
Weekly	
Monthly	

To ensure that access is removed if an administrator fails to respond, configure the:

Upon completion settings	✓
Advanced settings	
Programs	
Reviewers	

NEW QUESTION 2

HOTSPOT

Which users are members of ADGroup1 and ADGroup2? To answer, select the appropriate options in the answer area.

NOTE: Each correct selection is worth one point.

ADGroup1:

None	✓
User1 and User2 only	
User2 and User4 only	
User3 and User4 only	
User1, User2, User3, and User4	

ADGroup2:

None	✓
User1 and User2 only	
User2 and User4 only	
User3 and User4 only	
User1, User2, User3, and User4	

- A. Mastered
- B. Not Mastered

Answer: A

Explanation:

Reference:

<https://docs.microsoft.com/en-us/azure/active-directory/users-groups-roles/groups-dynamic-membership#supported-values>

NEW QUESTION 3

Which role should you assign to User1?

- A. Global administrator
- B. User administrator
- C. Privileged role administrator
- D. Security administrator

Answer: D

Explanation:

<https://docs.microsoft.com/en-us/azure/active-directory/privileged-identity-management/pim-how-to-give-access-to-pim>

NEW QUESTION 4

HOTSPOT

You are evaluating which devices are compliant in Intune.

For each of the following statements, select Yes if the statement is true. Otherwise, select No. NOTE: Each correct selection is worth one point.

Statements	Yes	No
Device2 is compliant.	<input type="radio"/>	<input type="radio"/>
Device5 is compliant.	<input type="radio"/>	<input type="radio"/>
Device6 is compliant.	<input type="radio"/>	<input type="radio"/>

- A. Mastered
- B. Not Mastered

Answer: A

Explanation:

Statements	Yes	No
Device2 is compliant.	<input checked="" type="radio"/>	<input type="radio"/>
Device5 is compliant.	<input type="radio"/>	<input checked="" type="radio"/>
Device6 is compliant.	<input checked="" type="radio"/>	<input type="radio"/>

NEW QUESTION 5

What should User6 use to meet the technical requirements?

- A. Supervision in the Security & Compliance admin center
- B. Service requests in the Microsoft 365 admin center
- C. Security & privacy in the Microsoft 365 admin center
- D. Data subject requests in the Security & Compliance admin center

Answer: B

NEW QUESTION 6

Note: This question is part of a series of questions that present the same scenario. Each question in the series contains a unique solution that might meet the stated goals. Some question sets might have more than one correct solution, while others might not have a correct solution.

After you answer a question in this section, you will NOT be able to return to it. As a result, these questions will not appear in the review screen.

You have a Microsoft 365 subscription that contains the users shown in the following table.

Name	Role
User1	Compliance Manager Contributor
User2	Compliance Manager Assessor
User3	Compliance Manager Administrator
User4	Portal Admin

You discover that all the users in the subscription can access Compliance Manager reports. The Compliance Manager Reader role is not assigned to any users.

You need to recommend a solution to prevent a user named User5 from accessing the Compliance Manager reports.

Solution: You recommend assigning the Compliance Manager Reader role to User1. Does this meet the goal?

- A. Yes
- B. No

Answer: B

NEW QUESTION 7

HOTSPOT

You have a Microsoft 365 subscription that uses a default domain name of contoso.com.

The multi-factor authentication (MFA) service settings are configured as shown in the exhibit. (Click the Exhibit tab.)

multi-factor authentication

users service settings

app passwords [\(earn more\)](#)

☒ Allow users to create app passwords to sign in to non-browser apps
 ☐ Do not allow users to create app passwords to sign in to non-browser apps

trusted ips [\(earn more\)](#)

☐ Skip multi-factor authentication for requests from federated users on my intranet

Skip multi-factor authentication for requests from following range of IP address subnets

verification options [\(earn more\)](#)

Methods available to users:

☐ Call to phone
 ☒ Text message to phone
 ☒ Notification through mobile app
 ☒ Verification code from mobile app or hardware token

remember multi-factor authentication [\(earn more\)](#)

☐ Allow users to remember multi-factor authentication on devices they trust

Days before a device must re-authenticate (1-60)

In contoso.com, you create the users shown in the following table.

Display name	Username	MFA status
User1	User1@contoso.com	Enabled
User2	User2@contoso.com	Enabled
User3	User3@contoso.com	Disabled

What is the effect of the configuration? To answer, select the appropriate options in the answer area. NOTE: Each correct selection is worth one point.

User1:

Can sign in to the My Apps portal without using MFA	V
Completed the MFA registration	
Must complete the MFA registration at the next sign-in	

User2:

Can sign in to the My Apps portal without using MFA	V
Must use app passwords for legacy apps	
Must use an app password to sign in to the My-Apps portal	

- A. Mastered
- B. Not Mastered

Answer: A

Explanation:

User1:

Can sign in to the My Apps portal without using MFA	V
Completed the MFA registration	
Must complete the MFA registration at the next sign-in	

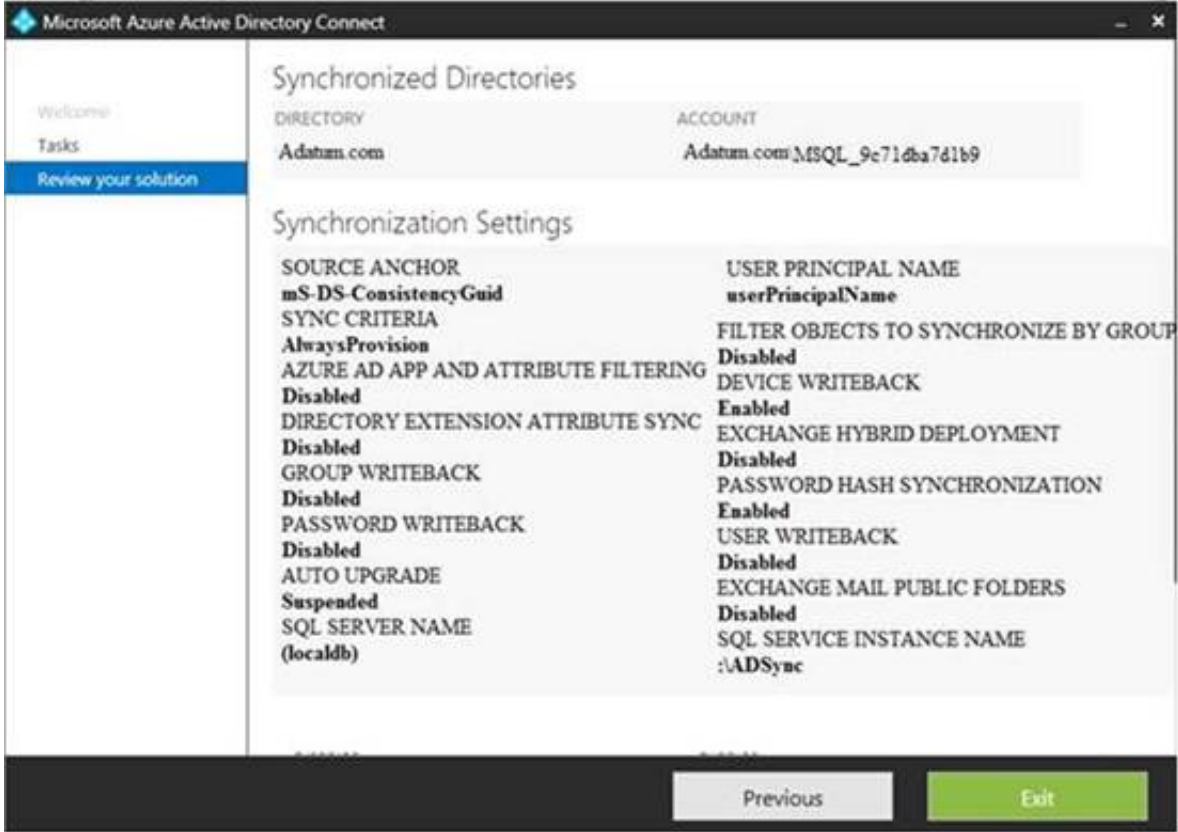
User2:

Can sign in to the My Apps portal without using MFA	V
Must use app passwords for legacy apps	
Must use an app password to sign in to the My-Apps portal	

NEW QUESTION 8

HOTSPOT

You configure Microsoft Azure Active Directory (Azure AD) Connect as shown in the following exhibit.



Use the drop-down menus to select the answer choice that completes each statement based on the information presented in the graphic.

NOTE: Each correct selection is worth one point.

If you reset a password in Azure AD, the password will [answer choice].

be overwritten	V
be synced to Active Directory	
be subject to the Active Directory password policy	

If you join a computer to Azure AD, [answer choice].

an object will be provisioned in the Computers container	V
an object will be provisioned in the RegisteredDevices container	
the device object in Azure will be deleted during synchronization	

- A. Mastered
- B. Not Mastered

Answer: A

Explanation:

Reference:
<https://docs.microsoft.com/en-us/azure/active-directory/hybrid/how-to-connect-device-writeback>

NEW QUESTION 9

You have a hybrid Microsoft 365 environment. All computers run Windows 10 and are managed by using Microsoft Intune. You need to create a Microsoft Azure Active Directory (Azure AD) conditional access policy that will allow only Windows 10 computers marked as compliant to establish a VPN connection to the on- premises network. What should you do first?

- A. From the Azure Active Directory admin center, create a new certificate
- B. Enable Application Proxy in Azure AD
- C. From Active Directory Administrative Center, create a Dynamic Access Control policy
- D. From the Azure Active Directory admin center, configure authentication methods

Answer: A

Explanation:

Reference:
<https://docs.microsoft.com/en-us/windows-server/remote/remote-access/vpn/ad-ca-vpn- connectivitywindows10>

NEW QUESTION 10

You configure several Advanced Threat Protection (ATP) policies in a Microsoft 365 subscription. You need to allow a user named User1 to view ATP reports in the Threat management dashboard. Which role provides User1 with the required role permissions?

- A. Security reader
- B. Message center reader
- C. Compliance administrator
- D. Information Protection administrator

Answer: A

Explanation:

Reference:

<https://docs.microsoft.com/en-us/office365/securitycompliance/view-reports-for-atp#what-permissions-areneeded-to-view-the-atp-reports>

NEW QUESTION 10

You have a Microsoft 365 Enterprise E5 subscription.

You use Windows Defender Advanced Threat Protection (Windows Defender ATP). You plan to use Microsoft Office 365 Attack simulator.

What is a prerequisite for running Attack simulator?

- A. Enable multi-factor authentication (MFA)
- B. Configure Advanced Threat Protection (ATP)
- C. Create a Conditional Access App Control policy for accessing Office 365
- D. Integrate Office 365 Threat Intelligence and Windows Defender ATP

Answer: A

Explanation:

Reference:

<https://docs.microsoft.com/en-us/office365/securitycompliance/attack-simulator>

NEW QUESTION 15

You have a Microsoft 365 E5 subscription.

You implement Advanced Threat Protection (ATP) safe attachments policies for all users.

User reports that email messages containing attachments take longer than expected to be received. You need to reduce the amount of time it takes to receive email messages that contain attachments. The solution must ensure that all attachments are scanned for malware. Attachments that have malware must be blocked.

What should you do from ATP?

- A. Set the action to Block
- B. Add an exception
- C. Add a condition
- D. Set the action to Dynamic Delivery

Answer: D

Explanation:

Reference:

<https://docs.microsoft.com/en-us/office365/securitycompliance/dynamic-delivery-and-previewing>

NEW QUESTION 20

You have a Microsoft 365 subscription.

You create an Advanced Threat Protection (ATP) safe attachments policy to quarantine malware. You need to configure the retention duration for the attachments in quarantine.

Which type of threat management policy should you create from the Security&Compliance admin center?

- A. ATP anti-phishing
- B. DKIM
- C. Anti-spam
- D. Anti-malware

Answer: D

NEW QUESTION 25

Note: This question is part of series of questions that present the same scenario. Each question in the series contains a unique solution that might meet the stated goals. Some question sets might have more than one correct solution, while others might not have a correct solution.

After you answer a question in this section, you will NOT be able to return to it. As a result, these questions will not appear in the review screen.

You have a Microsoft 365 tenant. You create a label named CompanyConfidential in Microsoft Azure Information Protection.

You add CompanyConfidential to a global policy.

A user protects an email message by using CompanyConfidential and sends the label to several external recipients. The external recipients report that they cannot open the email message.

You need to ensure that the external recipients can open protected email messages sent to them. Solution: You modify the encryption settings of the label.

Does this meet the goal?

- A. Yes
- B. No

Answer: B

NEW QUESTION 30

Note: This question is part of series of questions that present the same scenario. Each question in the series contains a unique solution that might meet the stated goals. Some question sets might have more than one correct solution, while others might not have a correct solution.

After you answer a question in this section, you will NOT be able to return to it. As a result, these questions will not appear in the review screen.

You have a Microsoft 365 tenant. You create a label named CompanyConfidential in Microsoft Azure Information Protection.

You add CompanyConfidential to a global policy.

A user protects an email message by using CompanyConfidential and sends the label to several external recipients. The external recipients report that they cannot open the email message.

You need to ensure that the external recipients can open protected email messages sent to them. Solution: You modify the content expiration settings of the label.

Does this meet the goal?

A. Yes

B. No

Answer: B

NEW QUESTION 31

HOTSPOT

Your network contains an on-premises Active Directory domain named contoso.com. The domain contains the groups shown in the following table.

Name	Type	Email address
Group1	Security Group – Domain Local	<u>Group1@contoso.com</u>
Group2	Security Group – Universal	None
Group3	Distribution Group – Global	None
Group4	Distribution Group – Universal	<u>Group4@contoso.com</u>

The domain is synced to a Microsoft Azure Active Directory (Azure AD) tenant that contains the groups shown in the following table.

Name	Type	Membership type
Group11	Security group	Assigned
Group12	Security group	Dynamic
Group13	Office	Assigned
Group14	Mail-enabled security group	Assigned

You create an Azure Information Protection policy named Policy1. You need to apply Policy1.

To which groups can you apply Policy1? To answer, select the appropriate options in the answer area. NOTE: Each correct selection is worth one point.

On-premises Active Directory groups:

Group4 only	V
Group1 and Group4 only	
Group3 and Group4 only	
Group1, Group3, and Group4 only	
Group1, Group2, Group3, and Group4	

Azure AD groups:

Group13 only	V
Group13 and Group14 only	
Group11 and Group12 only	
Group11, Group13, and Group14 only	
Group11, Group12, Group13, and Group14 only	

A. Mastered

B. Not Mastered

Answer: A

Explanation:

Reference:

<https://docs.microsoft.com/en-us/azure/information-protection/prepare>

NEW QUESTION 32

You have a Microsoft 365 subscription.

A user reports that changes were made to several files in Microsoft OneDrive.

You need to identify which files were modified by which users in the user's OneDrive. What should you do?

A. From the Azure Active Directory admin center, open the audit log

B. From the OneDrive admin center, select Device access

C. From Security & Compliance, perform an eDiscovery search

D. From Microsoft Cloud App Security, open the activity log

Answer: D

Explanation:

Reference:

<https://docs.microsoft.com/en-us/cloud-app-security/activity-filters>

NEW QUESTION 34

You have a Microsoft 365 subscription. You need to ensure that users can apply retention labels to individual documents in their Microsoft SharePoint libraries. Which two actions should you perform? Each correct answer presents part of the solution. NOTE: Each correct selection is worth one point.

- A. From the Cloud App Security admin center, create a file policy.
- B. From the SharePoint admin center, modify the Site Settings.
- C. From the SharePoint & Compliance admin center, create a label.
- D. From the SharePoint admin center, modify the records management settings.
- E. From the Security & Compliance admin center, publish a label.

Answer: CE

Explanation:

Reference:

<https://docs.microsoft.com/en-us/office365/securitycompliance/protect-sharepoint-online-files-with-office-365-labels-and-dlp>

NEW QUESTION 35

You have a Microsoft 365 subscription.

The Global administrator role is assigned to your user account. You have a user named Admin1. You create an eDiscovery case named Case1.

You need to ensure that Admin1 can view the results of Case1. What should you do first?

- A. From the Azure Active Directory admin center, assign a role group to Admin1.
- B. From the Microsoft 365 admin center, assign a role to Admin1.
- C. From Security & Compliance admin center, assign a role group to Admin1.

Answer: C

Explanation:

Reference:

<https://docs.microsoft.com/en-us/office365/securitycompliance/assign-ediscovery-permissions>

NEW QUESTION 38

HOTSPOT

You have a Microsoft 365 subscription. From the Security & Compliance admin center, you create the retention policies shown in the following table.

Name	Location
Policy1	OneDrive accounts
Polciy2	Exchange email, SharePoint sites, OneDrive accounts, Office 365 groups

Policy1 if configured as showing in the following exhibit.

Decide if you want to retain content, delete it, or both

Do you want to retain content? ⓘ

☒ Yes, I want to retain it ⓘ

For this long... ▾ 1 years ▾

☐ No, just delete content that's older than ⓘ

1 years ▾

Delete the content based on when it was created ▾ ⓘ

Need more options?

☐ Use advanced retention settings ⓘ

Back

Next

Cancel

Policy2 is configured as shown in the following exhibit.

Decide if you want to retain content, delete it, or both

Do you want to retain content? ⓘ

☒ Yes, I want to retain it ⓘ

For this long... ▾ 3 years ▾

Retain the content based on when it was created ▾ ⓘ

Do you want us to delete it after this time?

☐ Yes ☒ No

☐ No, just delete content that's older than ⓘ

1 years ▾

Need more options?

☐ Use advanced retention settings ⓘ

Back

Next

Cancel

For each of the following statements, select Yes if the statement is true. Otherwise, select No.

Answer Area	Yes	No
If a user creates a file in Microsoft OneDrive on January 1, 2018, users can access the file on January 15, 2019	<input type="radio"/>	<input type="radio"/>
If a user deletes a Microsoft OneDrive file created on January 1, 2018, an administrator can recover the file on April 15, 2019	<input type="radio"/>	<input type="radio"/>
If a user deletes a Microsoft OneDrive file created on January 1, 2018, an administrator can recover the file on April 15, 2022	<input type="radio"/>	<input type="radio"/>

- A. Mastered
- B. Not Mastered

Answer: A

Explanation:

Reference:

<https://docs.microsoft.com/en-us/office365/securitycompliance/retention-policies?redirectSourcePath=%252fen-us%252farticle%252fOverview-of-retention-policies-5e377752-700d-4870-9b6d-12bfc12d2423#the-principles-of-retention-or-what-takes-precedence>

NEW QUESTION 39

You have a Microsoft 365 subscription.

You need to enable auditing for all Microsoft Exchange Online users. What should you do?

- A. From the Exchange admin center, create a journal rule
- B. Run the Set-MailboxDatabase cmdlet
- C. Run the Set-Mailbox cmdlet
- D. From the Exchange admin center, create a mail flow message trace rule.

Answer: C

Explanation:

Reference:

<https://docs.microsoft.com/en-us/office365/securitycompliance/enable-mailbox-auditing>

NEW QUESTION 41

You have a Microsoft 365 subscription.

All computers run Windows 10 Enterprise and are managed by using Microsoft Intune. You plan to view only security-related Windows telemetry data.

You need to ensure that only Windows security data is sent to Microsoft. What should you create from the Intune admin center?

- A. a device configuration profile that has device restrictions configured
- B. a device configuration profile that has the Endpoint Protection settings configured
- C. a device configuration policy that has the System Security settings configured
- D. a device compliance policy that has the Device Health settings configured

Answer: A

Explanation:

Reference:

<https://docs.microsoft.com/en-us/intune/device-restrictions-windows-10#reporting-and-telemetry>

NEW QUESTION 44

You have a hybrid Microsoft 365 environment.

All computers run Windows 10 Enterprise and have Microsoft Office 365 ProPlus installed. All the computers are joined to Active Directory.

You have a server named Server1 that runs Windows Server 2016. Server1 hosts the telemetry database. You need to prevent private details in the telemetry data from being transmitted to Microsoft.

What should you do?

- A. On Server1, run readinessreportcreator.exe
- B. Configure a registry on Server1
- C. Configure a registry on the computers
- D. On the computers, run tdadm.exe

Answer: C

NEW QUESTION 45

Your company has a Microsoft 365 subscription that includes a user named User1.

You suspect that User1 sent email messages to a competitor detailing company secrets.

You need to recommend a solution to ensure that you can review any email messages sent by User1 to the competitor, including sent items that were deleted.

What should you include in the recommendation?

- A. Enable In-Place Archiving for the mailbox of User1
- B. From the Security & Compliance, perform a content search of the mailbox of User1
- C. Place a Litigation Hold on the mailbox of User1
- D. Configure message delivery restrictions for the mailbox of User1

Answer: C

NEW QUESTION 47

You have a Microsoft 365 subscription.

Yesterday, you created retention labels and published the labels to Microsoft Exchange Online mailboxes.

You need to ensure that the labels will be available for manual assignment as soon as possible. What should you do?

- A. From the Security & Compliance admin center, create a label policy
- B. From Exchange Online PowerShell, run Start-RetentionAutoTagLearning
- C. From Exchange Online PowerShell, run Start-ManagedFolderAssistant
- D. From the Security & Compliance admin center, create a data loss prevention (DLP) policy

Answer: C

NEW QUESTION 48

HOTSPOT

You have a Microsoft Azure Active Directory (Azure AD) tenant named contoso.com that contains the users shown in the following table.

Name	Member	Multi-factor authentication (MFA) status
User1	Group1	Disabled
User2	Group1, Group2	Enabled

You create and enforce an Azure AD Identity Protection user risk policy that has the following settings:

- Assignments: Include Group1, Exclude Group2
- Conditions: Sign in risk of Low and above
- Access: Allow access, Require password change

You need to identify how the policy affects User1 and User2.

What occurs when User1 and User2 sign in from an unfamiliar location? To answer, select the appropriate options in the answer area.

NOTE: Each correct selection is worth one point.

Must change their password:

	▼
User1 only	
User2 only	
Both User1 and User2	
Neither User1 nor User2	

Prompted for MFA:

	▼
User1 only	
User2 only	
Both User1 and User2	
Neither User1 nor User2	

A. Mastered

B. Not Mastered

Answer: A

Explanation:

Must change their password:

	▼
User1 only	
User2 only	
Both User1 and User2	
Neither User1 not User2	

Prompted for MFA:

	▼
User1 only	
User2 only	
Both User1 and User2	
Neither User1 not User2	

NEW QUESTION 50

You have a Microsoft 365 Enterprise E5 subscription.

You use Windows Defender Advanced Threat Protection (Windows Defender ATP).

You need to integrate Microsoft Office 365 Threat Intelligence and Windows Defender ATP. Where should you configure the integration?

- A. From the Microsoft 365 admin center, select Settings, and then select Services & add-ins.
- B. From the Security & Compliance admin center, select Threat management, and then select Explorer.
- C. From the Microsoft 365 admin center, select Reports, and then select Security & Compliance.
- D. From the Security & Compliance admin center, select Threat management and then select Threat tracker.

Answer: B

Explanation:

References:

<https://docs.microsoft.com/en-us/office365/securitycompliance/integrate-office-365-ti-with-wdatp>

NEW QUESTION 52

You have a Microsoft 365 subscription that uses a default domain name of fabrikam.com. You create a safe links policy, as shown in the following exhibit.

Safe links policy for your organization

Settings that apply to content across Office 365
When users click a blocked URL, they're redirected to a web page that explains why the URL is blocked.
Block the following URLs:

<div> <div>✎ -</div> <div> <input type="text" value="Enter a valid URL"/> <div>+</div> </div> </div> <div> *.phishing.* malware.*com *.contoso.com </div>

Settings that apply to content except email
These settings don't apply to email messages. If you want to apply them for email, create a safe links policy for email recipients.

Use safe links in:

☒ Office 365 ProPlus, Office for iOS and Android
☒ Office Online of above applications

For the locations selected above:

☒ Do not track when users click safe links:
☒ Do not let users click through safe links to original URL:

Which URL can a user safely access from Microsoft Word Online?

- A. fabrikam.phishing.fabrikam.com
- B. malware.fabrikam.com
- C. fabrikam.contoso.com

D. www.malware.fabrikam.com

Answer: D

Explanation:

References:

<https://docs.microsoft.com/en-us/office365/securitycompliance/set-up-a-custom-blocked-urls-list-with-atp>

NEW QUESTION 56

You have a Microsoft 365 subscription.

A security manager receives an email message every time a data loss prevention (DLP) policy match occurs.

You need to limit alert notifications to actionable DLP events.

What should you do?

- A. From the Security & Compliance admin center, modify the Policy Tips of a DLP policy.
- B. From the Cloud App Security admin center, apply a filter to the alerts.
- C. From the Security & Compliance admin center, modify the User overrides settings of a DLP policy.
- D. From the Security & Compliance admin center, modify the matched activities threshold of an alert policy.

Answer: D

Explanation:

References:

<https://docs.microsoft.com/en-us/office365/securitycompliance/alert-policies>

NEW QUESTION 57

You have a Microsoft 365 subscription.

You need to ensure that users can manually designate which content will be subject to data loss prevention (DLP) policies.

What should you create first?

- A. A retention label in Microsoft Office 365
- B. A custom sensitive information type
- C. A Data Subject Request (DSR)
- D. A safe attachments policy in Microsoft Office 365

Answer: C

Explanation:

References:

<https://docs.microsoft.com/en-us/office365/securitycompliance/manage-gdpr-data-subject-requests-with-the-dsr-case-tool#more-information-about-using-the-dsr-case-tool>

NEW QUESTION 58

You have a Microsoft 365 subscription.

You have a team named Team1 in Microsoft Teams. You plan to place all the content in Team1 on hold.

You need to identify which mailbox and which Microsoft SharePoint site collection are associated to Team1.

Which cmdlet should you use?

- A. Get-UnifiedGroup
- B. Get-MailUser
- C. Get-TeamMessagingSettings
- D. Get-TeamChannel

Answer: A

NEW QUESTION 62

You have a Microsoft 365 subscription.

You create an Advanced Threat Protection (ATP) safe attachments policy.

You need to configure the retention duration for the attachments in quarantine. Which type of threat management policy should you create?

- A. Anti-malware
- B. DKIM
- C. Anti-spam
- D. ATP anti-phishing

Answer: A

NEW QUESTION 63

Note: This question is part of a series of questions that present the same scenario. Each question in the series contains a unique solution that might meet the stated goals. Some questions sets might have more than one correct solution, while others might not have a correct solution.

After you answer a question in this section, you will NOT be able to return to it. As a result, these questions will not appear in the review screen.

You have an on-premises Active Directory domain named contoso.com.

You install and run Azure AD Connect on a server named Server1 that runs Windows Server. You need to view Azure AD Connect events.

You use the Directory Service event log on Server1. Does that meet the goal?

- A. Yes
- B. No

Answer: B

Explanation:

References:

<https://support.pingidentity.com/s/article/PingOne-How-to-troubleshoot-an-AD-Connect-Instance>

NEW QUESTION 65

Note: This question is part of a series of questions that present the same scenario. Each question in the series contains a unique solution that might meet the stated goals. Some questions sets might have more than one correct solution, while others might not have a correct solution.

After you answer a question in this section, you will NOT be able to return to it. As a result, these questions will not appear in the review screen.

You have an on-premises Active Directory domain named contoso.com.

You install and run Azure AD Connect on a server named Server1 that runs Windows Server. You need to view Azure AD Connect events.

You use the System event log on Server1. Does that meet the goal?

A. Yes

B. No

Answer: B

Explanation:

References:

<https://support.pingidentity.com/s/article/PingOne-How-to-troubleshoot-an-AD-Connect-Instance>

NEW QUESTION 67

.....

Thank You for Trying Our Product

* 100% Pass or Money Back

All our products come with a 90-day Money Back Guarantee.

* One year free update

You can enjoy free update one year. 24x7 online support.

* Trusted by Millions

We currently serve more than 30,000,000 customers.

* Shop Securely

All transactions are protected by VeriSign!

100% Pass Your MS-500 Exam with Our Prep Materials Via below:

<https://www.certleader.com/MS-500-dumps.html>