

Exam Questions HPE0-J68

HPE Storage Solutions

<https://www.2passeasy.com/dumps/HPE0-J68/>



NEW QUESTION 1

- (Exam Topic 1)

A customer is purchasing an HPE MSA 2050 for a branch office. They will use it for critical data services. The customer is concerned that 64 snapshots will not be adequate as they grow.
What can be added to the array to address the customer's concerns?

- A. Advanced Data Services Suite license
- B. All-inclusive Multi-system license
- C. Virtual Copy license
- D. Adaptive Optimization license

Answer: D

NEW QUESTION 2

- (Exam Topic 1)

Match the feature to the appropriate C-Series DCNM license type.

Answer Area

SAN Essentials Edition		Bundled at no charge with the C-series switches
Advanced Edition		Provides configuration, real-time monitoring, and troubleshooting capabilities
		Switch/server-based license
		Historical performance monitoring for network traffic hotspot analysis

- A. Mastered
- B. Not Mastered

Answer: A

Explanation:

Graphical user interface, application Description automatically generated

NEW QUESTION 3

- (Exam Topic 1)

You need to deploy a Recovery Manager Central appliance and integrate it with a customer's 3PAR system. Which information must be collected from the customer in order to proceed with the installer? (Choose two.)

- A. StoreOnce store name
- B. vCenter IP address or hostname
- C. HPE 3PAR used capacity
- D. IP address of the RMC
- E. NFS path

Answer: CD

NEW QUESTION 4

- (Exam Topic 1)

You need to create an N:M relationship between VMware hypervisors and virtual volumes with the least amount of administrative overhead.
Click the option where you can create a group of VMware hypervisors for volumes provisioning.

Primera & 3PAR SSMC

GENERAL	BLOCK PERSONA	STORAGE OPTIMIZATION	DATA PROTECTION	STORAGE SYSTEMS	SYSTEM REPORTER	SECURITY	VMWARE
Dashboard	Hosts	Priority Optimization	RMC Instances	Systems	Reports	Users	Virtual Machines
Activity	Host Sets			Controller Nodes	Threshold Alerts	LDAP	
Schedules	Virtual Volumes			Ports	Advanced Analytics		
Settings	App Volume Sets			Drive Enclosures			
	Common Provisioning Groups			Physical Drives			
	Policies						

HDP_datastore	SDP1	Companion Type	9.4.1
HDP_datastore.r	SDP2-Alex-Gonzalez	Previsioning	Base
ME-Demo-AutoCPG	SDP1	Debug	Thin
ME-Demo-AutoCPG.r	SDP2-Alex-Gonzalez	Compression Mode	Yes
ME-Demo.0	SDP1	RAID	Read/Write
ME-Demo.1	SDP1	Adaptive optimization	RAID 6
test.1	SDP1	CPG	SSD r6
test.2	SDP1	Copy CPG	SSD r6
test.3	SDP1	Comments	
test_1FM	SDP1	Virtual Machines	0
test_1FM_clone	SDP1	App Volume Set	-
test_k	SDP1		

Average throughput in MB/sec: 0 MB/sec

Average latency in ms: 0 ms

Copies

Clones	0
Snapshots	0
Snapshot policy	None
Remote copy group	HDP Demo Replication v518789

- A. Mastered
- B. Not Mastered

Answer: A

Explanation:

Graphical user interface, text Description automatically generated

NEW QUESTION 5

- (Exam Topic 1)

You are asked to review an installation plan for a new Primera storage array. The array will go into an existing environment that has been in production for over 4 years. It includes:

- > C7000s with Gen8 blades
- > 8Gb Brocade switches
- > a 3PAR 7400
- > an MSA that is used as a backup target

What should you use to find appropriate installation and planning guides?

- A. SAF Analyze and Collector
- B. Information Library
- C. NinjaSTARS
- D. SPOCK

Answer: D

NEW QUESTION 6

- (Exam Topic 1)

Match the MSA architecture components with their descriptions.

Component		Description
Tier		aggregation of disks of the same type using a specific RAID level
Virtual disk group		automatically assigned performance characteristic
Volume group		collection of virtual volumes allowing group management functions
Virtual pool		collection of virtual disk groups
Virtual volume		logical subdivision of a virtual pool that can be mapped to a host

- A. Mastered
- B. Not Mastered

Answer: A

Explanation:

Graphical user interface Description automatically generated with medium confidence

NEW QUESTION 7

- (Exam Topic 1)

A customer uses Veeam to backup their entire datacenter.

Which Veeam feature allows them to recover a single email from their Exchange server?

- A. Changed block tracking
- B. Explorer for Storage Snapshots
- C. Data Mover Service
- D. SureBackup

Answer: B

NEW QUESTION 8

- (Exam Topic 1)

A customer is planning to replace their existing LTO-6 tape library with a new HPE StoreEver MSL2024 tape library. They want to reuse their existing LTO-6 tape cartridges for reads and writes.

What is the latest tape drive technology that will provide backward compatibility?

- A. LTO8
- B. LTO5
- C. LTO6
- D. LTO7

Answer: D

NEW QUESTION 9

- (Exam Topic 1)

A customer is deploying a new StoreOnce VSA solution.
How can the necessary storage capacity be added to the VSA? (Choose two.)

- A. Verify sufficient capacity LTUs are available
- B. Add a new virtual hard disk to the virtual machine
- C. The Cloud bank container needs to be configured once the VSA boots
- D. The Cloud bank container needs to be configured from the vCenter client

Answer: BD

NEW QUESTION 10

- (Exam Topic 1)

A customer successfully implemented an HPE Primera solution.
Which tool can be used to verify achieved savings from deduplication and compression in the customer solution?

- A. NinjaSTARS
- B. 3PAR Service Processor
- C. NinjaCrawler
- D. StoreServ System Management Console

Answer: D

NEW QUESTION 10

- (Exam Topic 1)

Match each HPE storage solution to its use case.

Solution		Use Case
Primera	<input type="text"/>	Smaller site traditional deployments
MSA	<input type="text"/>	Complete solution for virtualized environments
Nimble	<input type="text"/>	Enterprise class storage for SMB
Nimble dHCI	<input type="text"/>	Enterprise class storage with Tier-0 features
SimpliVity	<input type="text"/>	hyperconverged control with independent compute and storage scalability

- A. Mastered
- B. Not Mastered

Answer: A

Explanation:

Graphical user interface, text, application Description automatically generated

NEW QUESTION 13

- (Exam Topic 1)

Which protocol can be used for accessing StoreOnce VTL target from Veeam?

- A. FC
- B. NFSv4
- C. iSCSI
- D. SMBv3

Answer: C

NEW QUESTION 18

- (Exam Topic 1)

A customer asks you for a recommendation on setting up their new StoreOnce appliance. They plan to use NetBackup and need the highest performance setup they can get. Their local hosts are connected via FC and the rest are connected via a WAN. Which backup target type should you recommend?

- A. VTL
- B. S3
- C. CIFS
- D. Catalyst

Answer: A

NEW QUESTION 23

- (Exam Topic 1)

Which of the following are part of the SimpliVity Data Virtualization Platform architecture? (Choose two.)

- A. Presentation Layer

- B. User Management Layer
- C. Security Layer
- D. Data Management Layer

Answer: AD

NEW QUESTION 28

- (Exam Topic 1)

A customer is planning to upgrade their HF40 controllers to support additional I/O requirements. To which model can they upgrade to meet their new requirements?

- A. AF60
- B. AF40
- C. HF60
- D. HF40C

Answer: D

NEW QUESTION 31

- (Exam Topic 1)

Which feature allows HPE Primera, HPE Nimble, and HPE XP arrays to work with third-party management tools?

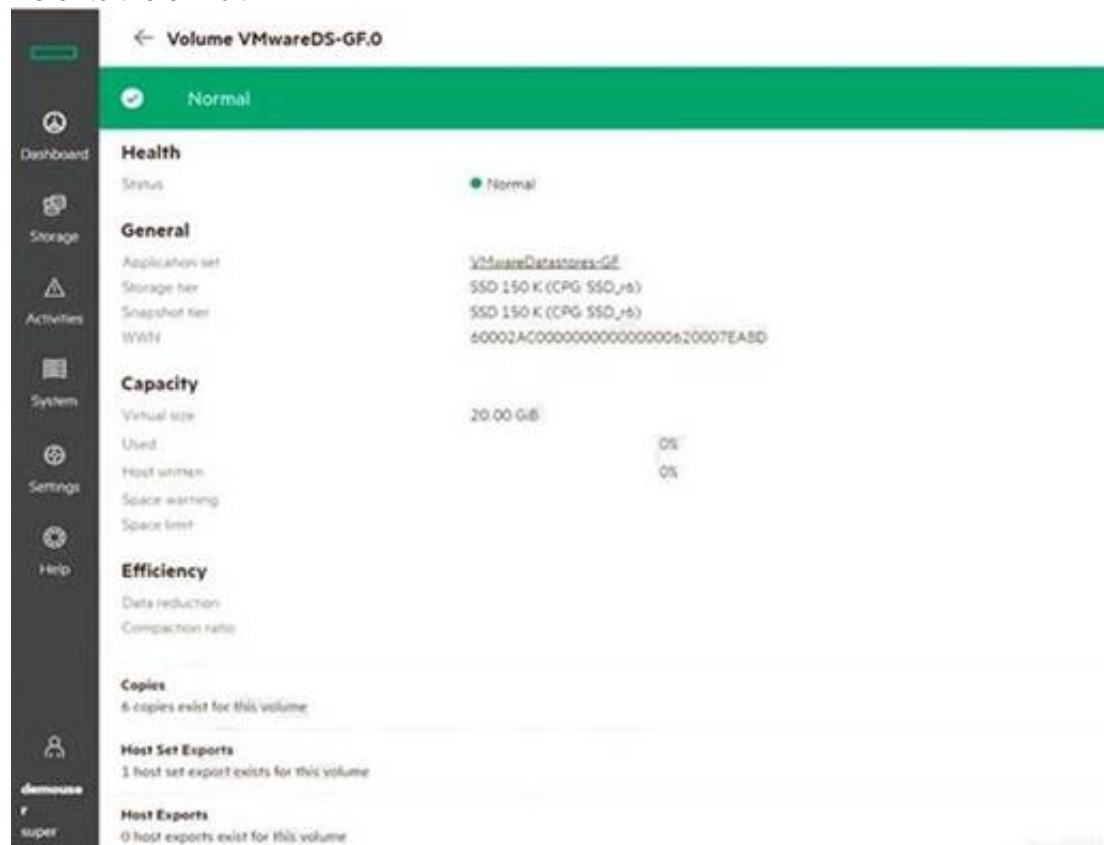
- A. REST API
- B. Data Protection Manager (DPM)
- C. StoreServe Management Console (SSMC)
- D. Service Processor

Answer: A

NEW QUESTION 36

- (Exam Topic 1)

Refer to the exhibit.



You are configuring a new HPE array and verifying properties of a set of volumes. Which RAID level is used on the VMwareDatastores-GF volume?

- A. RAID 0
- B. RAID 6
- C. Triple Parity+
- D. RAID 5

Answer: D

NEW QUESTION 37

- (Exam Topic 1)

You have proposed that a customer replace their legacy SAN switches with new ?-Series switches. They are concerned about the management of all the devices, so you have included SANnav in the proposal.

What are the benefits of SANnav that you should emphasize to this customer? (Choose two.)

- A. It runs in a dedicated JVM
- B. It offers automated SPOCK validation
- C. It runs in a browser
- D. It provides a global View
- E. It provides fine-grain visibility into Storage Fabrics (FC + Ethernet)

Answer: CD

NEW QUESTION 38

- (Exam Topic 1)

Select the correct initiation option for each HPE Primera function.

Answer Area

User Initiated	<input type="checkbox"/>	Stripe data across drives
Autonomic	<input type="checkbox"/>	Create Virtual Volumes
	<input type="checkbox"/>	Create Common Provisioning Groups
	<input type="checkbox"/>	Create RAID-6 Virtual Volumes
	<input type="checkbox"/>	Optional Performance Management
	<input type="checkbox"/>	Export LUNs

- A. Mastered
- B. Not Mastered

Answer: A

Explanation:

Graphical user interface, application Description automatically generated

NEW QUESTION 39

- (Exam Topic 1)

A customer has completely virtualized their datacenter with VMware. You propose a SimpliVity solution to replace their aging hardware.

Which SimpliVity features should you emphasize in your presentation? (Choose two.)

- A. It uses native hypervisor management tools for management
- B. It utilizes the Storage Management Utility for management and monitoring
- C. It utilizes a unified ASIC for performance
- D. It includes deduplication and backup capabilities
- E. It provides S3 file access

Answer: BD

NEW QUESTION 42

- (Exam Topic 1)

A customer wants to make a full copy replica of a database to use for performance testing. Which technology should they use to create the copy?

- A. deduplication
- B. snapshot
- C. clone
- D. synthetic full

Answer: B

NEW QUESTION 47

- (Exam Topic 1)

You are proposing a StoreOnce solution to a customer that has always used tape for a backup target. What should you suggest to ensure that the StoreOnce deduplication is correctly sized?

- A. StoreOnce timeless storage
- B. DDAnalyzer
- C. proof of concept with StoreOnce VSA
- D. OCA

Answer: B

NEW QUESTION 50

- (Exam Topic 1)

A customer purchased a StoreOnce 3620 earlier in the year and has decided to add a 10GBase- adapter to it, which the customer sourced elsewhere and installed themselves. They complain that the new adapter is not configurable.

What is the most likely reason for this issue?

- A. The StoreOnce software requires updating
- B. Secure boot must be enabled in the BIOS to securely enable HBAs
- C. The customer failed to install a License to Use (LTU) for it
- D. The StoreOnce needs to connect to InfoSight to validate the adapter authenticity

Answer: A

NEW QUESTION 55

- (Exam Topic 2)

Which feature enables a non-disruptive environment where host-based multi-pathing software is not affected in the event of a firmware upgrade?

- A. HPE 3PAR Access Guard
- B. HPE 3PAR Persistent Ports
- C. HPE 3PAR Persistent Cache
- D. HPE 3PAR MPIO

Answer: B

NEW QUESTION 59

- (Exam Topic 2)

How does HPE StoreVirtual DSM for windows enhanced Microsoft windows native MPIO?

- A. It automatically create an I/O path to each storage system in the cluster
- B. It automatically adjusts transfer block
- C. It automatically combines HPE thin provisioning and volume migration technology
- D. It automatically adjusts the availability bandwidth between the switch and the array

Answer: A

NEW QUESTION 61

- (Exam Topic 2)

Which built-in HPE 3PAR StoreServ technology reduces database transaction logs response time?

- A. Express Writes
- B. Adaptive Flash Cache
- C. Thin provisioning
- D. Thin Deduplication

Answer: B

NEW QUESTION 63

- (Exam Topic 2)

Which functionality available in an HPE 3 Par StoreServ 8400 system that is not available in an HPE 3par Storesrve 7200

- A. Data at Rest Encryption
- B. Persistent Checksum end-to-end data integrity (correct)
- C. Adaptive optimization and dynamic Optimization
- D. Online import license

Answer: B

NEW QUESTION 66

- (Exam Topic 2)

A customer's environment consists of two HPE Synergy frames running VMware vSphere, HPE FlexFabric 5700 switches, and one HPE Nimble HF-series array connected via 10GbE-T ports to the FlexFabric switches. The customer is concerned about performance management of the whole solution stack. When using infosight with VMvision and analyzing end-to-end latency, which of the components within the stack are displayed? (Choose Three)

- A. iSCSI network(SAN)
- B. Ethernet network (LAN)
- C. storage
- D. application
- E. operating system
- F. host

Answer: ADF

NEW QUESTION 67

- (Exam Topic 2)

What are two advantages of HPE Recovery Manager Central? (Select two.)

- A. Enables automatic transparent failover
- B. Less expensive than traditional backup
- C. Includes Peer Copy asynchronous replication
- D. Manual data provisioning and policy-based copy protection
- E. Integration capabilities utilizing HTML

Answer: BC

NEW QUESTION 71

- (Exam Topic 2)

A customer is evaluating an HPE 3PAR StoreServ system in a proof-of-concept project. The customer wants to receive emails about important storage system events and alerts.

What feature do you need to configure?

- A. HPE OneView integration
- B. Secure Service Agent
- C. Real-time Alert Processing
- D. Local Notification Service

Answer: D

NEW QUESTION 74

- (Exam Topic 2)

Which statement is correct when discussing the RAID layout of an HPE Nimble HF-series storage system?

- A. RAID 6 triple parity is set up -21 data drives are used for RAID stripes.
- B. RAID 6 triple parity is set up -18 data drives are used for RAID stripes.
- C. RAID 6 or RAID 1 can be set up -24 data drives are used for RAID stripes.
- D. RAID 6 or RAID 1 can be set up -18 data drives are used for RAID stripes.

Answer: A

NEW QUESTION 77

- (Exam Topic 2)

A customer needs to add another HPE 3PAR StoreServ system and plans to use the federated storage approach.

Which advantages can the customer expect? (Choose two.)

- A. load balancing
- B. reduced power, cooling, and environmental impacts
- C. allows multiple management tools
- D. easier migration
- E. federated deduplication

Answer: AD

Explanation:

Federated storage—Move data between storage systems in a peer-to-peer relationship simply, dynamically, and nondisruptively to improve storage utilization, balance workloads, and ease storage migration.

NEW QUESTION 80

- (Exam Topic 2)

Which storage feature is supported by both the HPE StoreVirtual and the HPE 3PAR StoreServ storage, and is a key differentiator of HPE storage solutions in the industry?

- A. Network RAID
- B. Peer Motion
- C. virtual Copy
- D. Dynamic Optimization

Answer: B

NEW QUESTION 82

- (Exam Topic 2)

Which technology is used in a B-series SAN switch to prevent communication between unauthorized devices?

- A. Port isolation
- B. IVR
- C. Zoning
- D. VSAN

Answer: A

NEW QUESTION 84

- (Exam Topic 2)

Which storage protocol is supported by virtual connect Flex-10?

- A. FCoE
- B. FC
- C. iSCSI
- D. FCIP

Answer: C

NEW QUESTION 88

- (Exam Topic 2)

You are presenting a Nimble solution based on CS3000 hardware to a customer. Which support advantage will be provided with this solution (select two)

- A. Customers always interact with a 3rd level support engineer ,when needed
- B. Customers only have to deploy a service processor for automating support tasks.
- C. Infosight handles the work of 1st and 2nd level support specialist Infosight offers predictive analytics and integration into HPE support center using insight Online.
- D. Infosight performs firmware and software updates without additional administrative support.

Answer: AC

NEW QUESTION 90

- (Exam Topic 2)

A customer asks for a 50 TB disk-based backup solution with deduplication. They also need additional storage for test/dev purposes. Which single HPE storage platform can you present to the customer that will meet both of their needs?

- A. HPE Nimble SF series
- B. HPE StoreEasy Gateway
- C. HPE StoreOnce
- D. HPE Nimble CS series

Answer: A

Explanation:

HPE quick specs, they also offer the flash-optimized performance needed to run development/test, QA, and analytics workloads on your backup data—plus production workloads when needed.

NEW QUESTION 92

- (Exam Topic 2)

A customer with several HPE 3PAR StoreServ arrays has reported latencies with newly updated applications. You have proposed changes to the AO configuration and need to provide high-resolution reports on how the change has affected the latencies.

What should you propose on delivering the service time and I/O workload information daily for you and the customer?

- A. Use IMC to schedule performance data gathering and email delivery.
- B. Schedule SSMC System Reporter to send the defined email reports.
- C. Enable the Service Processor to gather Performance data and schedule data transfer.
- D. Login to InfoSight and analyze Advanced Performance history.

Answer: D

NEW QUESTION 95

- (Exam Topic 2)

A customer has a large deployment of HPE Synergy compute modules, HPE 3PAR StoreServ storage, and HPE StoreOnce systems in a single data center. They are concerned about the risk of data loss due to site disaster.

What is the reason to propose HPE CloudBank?

- A. To easily move workloads to AWS or Azure in the event of site disaster.
- B. To improve RPO/RTO objectives by automating snapshot-based integrating between 3PAR and StoreOnce.
- C. To regularly send backups to the cloud for the purposes of DR protection.
- D. To leverage 3PAR snapshots and utilize StoreOnce recovery capabilities to minimize data loss and downtime.

Answer: C

NEW QUESTION 98

- (Exam Topic 2)

You are designing a new HPE 3PAR StoreServ all-flash array for the customer.. Which ratio should you expect to have the highest efficiency?

- A. Read/write ratio
- B. Reclamation ratio
- C. Compaction Ratio
- D. Thin provisioning ratio

Answer: C

NEW QUESTION 101

- (Exam Topic 2)

During which event will HPE 3par Storeserv persistent port feature provide transparent and uninterrupted failover (Select two)

- A. Loss of persistent cache
- B. B-series SAN switch upgrades
- C. Firmware upgrade
- D. Node maintenance or failure
- E. Loss of full-mesh cluster interconnect

Answer: CD

NEW QUESTION 102

- (Exam Topic 2)

A customer has an existing configuration consisting of first class and nearline SAS drive in an 8000 SFF enclosure. They add two SFF 8000enclosure that are fully populated with nearline drives to an existing HPE 3Par storeserv 8400 array. What should the customer do to optimize their storage configuration?

- A. Defrag the CPG and run align drive on their system
- B. Run tunesys and on the array (275)
- C. Enable space reclamation
- D. Create new CPG for the newly installed drivers

Answer: B

NEW QUESTION 103

- (Exam Topic 2)

Users are complaining about poor performance with their Data Warehouse application. What is an effective solution to increase their performance at minimal cost?

- A. HPE 3PAR Adaptive Flash Cache
- B. HPE 3PAR Priority Optimization
- C. HPE 3PAR Dynamic Optimization
- D. HPE 3PAR Adaptive Optimization

Answer: B

NEW QUESTION 106

- (Exam Topic 2)

Which file protocols are commonly used in HPE StoreOnce environments? (Choose two.)

- A. CIFS
- B. NTFS
- C. VFS
- D. ZFS
- E. NFS

Answer: AE

NEW QUESTION 109

- (Exam Topic 2)

You are presenting the HPE StoreEver portfolio to a media agency. What advantage is offered when using LTFS?

- A. file management capabilities will be provided with tape cartridges
- B. WORM functionality for file, block and object storage access on tape
- C. file encryption with public and private key management
- D. file and block data management within an HPE HSM solution

Answer: A

NEW QUESTION 114

- (Exam Topic 2)

A customer needs to be manually map out preferred paths within a multi-switch fabric, based on application ,priority ,and topology, while allowing failover to a non-preferred path if the preferred path fails, Which B-series FC switch functionality should be used to provide this?

- A. Quality of services
- B. Enhanced group management
- C. Frame filtering
- D. Traffic isolation Zones

Answer: D

NEW QUESTION 117

- (Exam Topic 2)

A customer has mission-critical applications that intermittently experience heavy disk I/O. The storage speed has the most impact on the application's performance. The customer does not want to dedicate SSD disks to these applications because additional performance is only needed periodically, and moving the volumes between tiers takes too long.

Which HPE StoreVirtual VSA feature can address this customer's challenge?

- A. Storage virtualization
- B. Space Reclamation
- C. Thin Provisioning
- D. Adaptive Optimization

Answer: D

NEW QUESTION 121

- (Exam Topic 2)

Which statement is correct when comparing functionalities of the AF,CF, and SF series in the nimble storage portfolio?

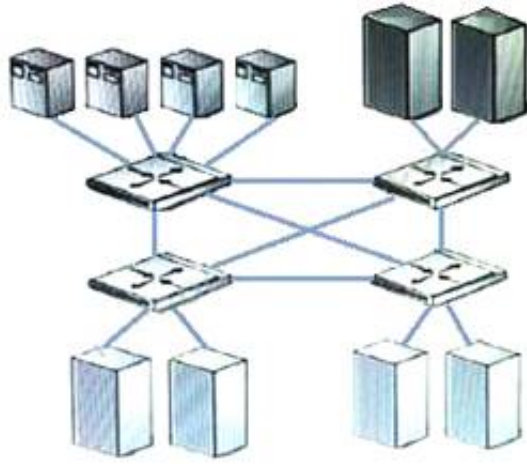
- A. Zero copy clone are unique feature of all flash array within the nimble portfolio
- B. SF series supports storage snapshots and replication using veeeam backup & replication CS and AF series support storage snapshot only.
- C. Inline deduplication for complete array capacity in combination with compression is offered by the AF and SF series only (67) need to check
- D. 99.9999% availability measured and guaranteed for AF and CF series arrays, SF series array offer 99.999% availability.

Answer: C

NEW QUESTION 122

- (Exam Topic 2)

Exhibit:



Which fabric design is shown?

- A. meshed
- B. single fabric
- C. cascaded
- D. core-edge

Answer: A

NEW QUESTION 124

- (Exam Topic 2)

What has to taken into account when performing capacity planning for HPE Nimble storage using deduplication?

- A. Deduplication is performed on a per volume basic
- B. Deduplication is performed on a per array basic
- C. Deduplication is performed on a per application category basic
- D. Deduplication is performed on a per pool and block size basic

Answer: D

NEW QUESTION 128

- (Exam Topic 2)

What owns the physical drives in an HPE 3PAR StoreServ Express Layout?

- A. a logical disk
- B. a chunklet
- C. a single node
- D. a node pair

Answer: D

NEW QUESTION 129

- (Exam Topic 2)

You are planning a single-site Nimble solution with iSCSI connectivity. Two 10GbE SFP+ dual port NICS are included in the configuration. You designed an intelligent Resilient Framework (IRF) stack with HPE FlexFabric 5900CP switches.

Which statements is correct when discussing the IRF limits for this configuration?

- A. When connecting an iSCSI storage to an IRF stack, a minimum of four 10GbE ports must be used per switch.
- B. A maximum of two switches can be used in an IRF stack when connecting storage.
- C. In an IRF stack with storage connectivity, the 40GbE ports cannot be used.
- D. The used IRF ports for iSCSI traffic have to be configured as 10GbE converged ports.

Answer: B

NEW QUESTION 132

- (Exam Topic 2)

A customer run several HPE 3PAR storeserv system in their environment using data rest encryption .The customer needs to add an HPE 3PAR Storeserv 8000system to the storage pool and an external key manager for all systems.. What is the requirement for this solution?

- A. Boot server for the existing 3PAR storeserv array must be replaced with self-encrypting drive
- B. All drives of the new HPE 3PAR storeserv array must be self-encrypting
- C. HPE ESKM FIPS mode must be disabled by the administrator
- D. Data on the existing HPE 3PAR storeserv array must be decrypted and re-encrypted with new keys

Answer: B

NEW QUESTION 136

- (Exam Topic 2)

A large organization is experiencing exponential data growth of object storage due to recent mergers and acquisition .They need an on-premise solution to optimize cost at petabyte scale Which components should you recommend for a software-defined solution ?(select two)

- A. HPE Appolo 4510 server
- B. HPE Complete –Scalability RING
- C. HPE Synergy 660 Gen10 compute modules
- D. HPE complete –CTERA
- E. HPE 3PAR Storeserv 9450c

Answer: AB

NEW QUESTION 137

- (Exam Topic 2)

Which protocols are currently used in the front end by HPE 3PAR StoreServ systems? (Choose two.)

- A. iSCSI
- B. Infiniband
- C. SAS
- D. NVMe
- E. FC

Answer: AE

NEW QUESTION 138

- (Exam Topic 2)

A customer has a SAN based on HPE B-series switches with Gen6 fibre channel technology. Their workload is continually growing and they are experiencing performance issues. They need a solution to enable real-time monitoring and to speed up troubleshooting in his SAN backend.

Which unique feature of the HPE B-series Gen6 switches should you recommend? (Choose two.)

- A. Fabric Watch
- B. MAPS
- C. Advanced Trunking
- D. Fabric Vision
- E. Extended Fabrics

Answer: AD

NEW QUESTION 141

- (Exam Topic 2)

A customer need to update the local sever at each of their branches keep up with the increasing demand for High-performance storage. The customer cannot afford to move to SAN at each state. Which HPE storage technology can increase performance for this customer?

- A. Smart Path
- B. SmartCache
- C. Adaptive Flash Cache
- D. Persistent Cache

Answer: B

NEW QUESTION 143

- (Exam Topic 2)

Match the type of storage found in today's market to the HPE storage solution optimized for that capacity?

- A. HPE 3PAR StoreServ - Block
- B. MSA - Block
- C. Nimble - Block
- D. Scalability - Object
- E. StoreEasy - File
- F. StoreVirtual - Block

Answer: A

NEW QUESTION 145

- (Exam Topic 2)

A customer has an HPE 3PAR StoreServ 8200 with eight 3.84 TB SSD's configured with RAID5 7+1. They plan to add four more 3.84 TB SSD's. What needs to be changed on the configuration once the new SSD's are installed?

- A. Reconfigure the cpg setsize as RAID6 6+2 and wait for tunesys to complete.
- B. Change the availability level from cage to magazine.
- C. Adjust the cpg growth value to match amount of SSD's.
- D. Change the cpg setsize to RAID5 5+1 and run tunesys.

Answer: D

NEW QUESTION 146

- (Exam Topic 2)

An HPE 3PAR StoreServ 9000 All-Flash Array customer plans to deploy a secondary array 20 km away from their primary array to enable storage replication over

a dark fibre. Their existing environment consists of one HPE Synergy Frame 12000, HPE SN6000B Fibre Channel Switches, HPE FlexFabric 5700 Switch Series, and HPE StoreOnce Systems.

Which HPE license is required to meet the customer's technical requirements?

- A. Intelligent Resilient Framework licenses
- B. HPE StoreOnce Replication
- C. Extended Fabric
- D. HPE 3PAR Remote Copy

Answer: D

NEW QUESTION 150

- (Exam Topic 2)

A customer needs to expand an HPE StoreVirtual VSA based cluster with two additional VSA instances. What do you need to consider when designing the new VSA instances?

- A. They will require downtime to re-balance the resources within the cluster.
- B. They must be configured into a new management group.
- C. They must be of equal or greater capacity than the existing instances in a cluster.
- D. They can only have equal to or smaller capacity compared to the existing instances.

Answer: C

NEW QUESTION 154

- (Exam Topic 2)

Which statement describes HPE StoreVirtual Network RAID functionality?

- A. Redundancy is managed on a per-volume basis.
- B. With Network RAID 10+2 data is striped and mirrored across two or more storage systems.
- C. Network RAID 10 requires an even number of storage nodes.
- D. Volumes remain available if an odd number of nodes are available.

Answer: A

Explanation:

Redundancy is managed on a per volume basis to improve storage utilization and to remove any single point of failure.

NEW QUESTION 155

- (Exam Topic 2)

A customer need to server 40TB via file protocols including SMB and FTP to a board range of client operating system in one location .security protocol dictate that data must be encrypted with FIPS 140-2 compliance. Which HPE storage solution you recommend?

- A. HPE MSA 2052 storage with HPE StoreEasy 3850 Gateway
- B. HPE 3PAR 8200 using self-encrypting drive with 3PAR file persona
- C. HPE StoreOnce 5500with data in fight encryption .
- D. HPE XP7 storage with encryption ready disk adapters

Answer: B

NEW QUESTION 157

- (Exam Topic 2)

Which storage sizing tool, designed specifically for the HPE 3PAR StoreServ environment, shows the expected deduplication ratio based on actual data analysis of the customer's current environment?

- A. NinjaCrawler
- B. StoreVista
- C. NinjaThin
- D. NinjaStars

Answer: D

NEW QUESTION 158

- (Exam Topic 2)

A customer currently has a CS1000H and wants to upgrade to a CS3000. What must be considered before upgrading?

- A. This upgrade is disruptive and needs planned downtime.
- B. A capacity upgrade to a fully populated array has to be performed first.
- C. Timeless storage support is not offered for CS1000H entry-level systems.
- D. A controller upgrade to a CS1000F has to be performed first.

Answer: B

NEW QUESTION 160

- (Exam Topic 2)

Which statement is correct when comparing functionalities of the AF and HF series in the Nimble storage portfolio? (Choose Two)

- A. Zero Copy Clones are a unique feature of All-Flash arrays within the Nimble Portfolio.
- B. >99.9999% availability is measured and guaranteed for AF and HF series arrays.
- C. HF series has a dedicated read cache and AF series does not have a dedicated reach cache.
- D. HF series supports storage snapshots and replication using Veeam Backup & Replication, HF and AF series support storage snapshots only

Answer: BC

NEW QUESTION 163

.....

THANKS FOR TRYING THE DEMO OF OUR PRODUCT

Visit Our Site to Purchase the Full Set of Actual HPE0-J68 Exam Questions With Answers.

We Also Provide Practice Exam Software That Simulates Real Exam Environment And Has Many Self-Assessment Features. Order the HPE0-J68 Product From:

<https://www.2passeasy.com/dumps/HPE0-J68/>

Money Back Guarantee

HPE0-J68 Practice Exam Features:

- * HPE0-J68 Questions and Answers Updated Frequently
- * HPE0-J68 Practice Questions Verified by Expert Senior Certified Staff
- * HPE0-J68 Most Realistic Questions that Guarantee you a Pass on Your FirstTry
- * HPE0-J68 Practice Test Questions in Multiple Choice Formats and Updatesfor 1 Year