

## Exam Questions NSE5\_FMG-7.2

Fortinet NSE 5 - FortiManager 7.2

[https://www.2passeasy.com/dumps/NSE5\\_FMG-7.2/](https://www.2passeasy.com/dumps/NSE5_FMG-7.2/)



### NEW QUESTION 1

- (Exam Topic 1)

Which configuration setting for FortiGate is part of a device-level database on FortiManager?

- A. VIP and IP Pools
- B. Firewall policies
- C. Security profiles
- D. Routing

**Answer: D**

#### Explanation:

The FortiManager stores the FortiGate configuration details in two distinct databases. The device-level database includes configuration details related to device-level settings, such as interfaces, DNS, routing, and more. The ADOM-level database includes configuration details related to firewall policies, objects, and security profiles.

### NEW QUESTION 2

- (Exam Topic 1)

You are moving managed FortiGate devices from one ADOM to a new ADOM. Which statement correctly describes the expected result?

- A. Any pending device settings will be installed automatically
- B. Any unused objects from a previous ADOM are moved to the new ADOM automatically
- C. The shared policy package will not be moved to the new ADOM
- D. Policy packages will be imported into the new ADOM automatically

**Answer: C**

#### Explanation:

Reference:

<https://community.fortinet.com/t5/FortiManager/Technical-Note-How-to-move-objects-to-new-ADOM-on-Forti>

### NEW QUESTION 3

- (Exam Topic 1)

What is the purpose of the Policy Check feature on FortiManager?

- A. To find and provide recommendation to combine multiple separate policy packages into one common policy package
- B. To find and merge duplicate policies in the policy package
- C. To find and provide recommendation for optimizing policies in a policy package
- D. To find and delete disabled firewall policies in the policy package

**Answer: C**

#### Explanation:

Reference:

[https://help.fortinet.com/fmgr/50hlp/56/5-6-2/FortiManager\\_Admin\\_Guide/1200\\_Policy%20and%20Objects/08](https://help.fortinet.com/fmgr/50hlp/56/5-6-2/FortiManager_Admin_Guide/1200_Policy%20and%20Objects/08)

### NEW QUESTION 4

- (Exam Topic 1)

Refer to the exhibit.

```
FortiManager # diagnose dvm device list
--- There are currently 1 devices/vdoms managed ---

TYPE      OID   SN      HA   IP      NAME      ADOM      IPS      FIRMWARE
fmgr/faz  enabled 157    FGVM01.. -   10.200.1.1  Local-FortiGate  My_ADOM  14.00641 (regular) 6.0 MR2 (866)
|- STATUS: dev-db: modified; conf: in sync; cond: pending; dm: retrieved; conn: up
|- vdom:[3]root flags:0 adom:My_ADOM pkg:[imported]Local-FortiGate
```

Which two statements about the output are true? (Choose two.)

- A. The latest revision history for the managed FortiGate does match with the FortiGate running configuration
- B. Configuration changes have been installed to FortiGate and represents FortiGate configuration has been changed
- C. The latest history for the managed FortiGate does not match with the device-level database
- D. Configuration changes directly made on the FortiGate have been automatically updated to device-level database

**Answer: AC**

#### Explanation:

STATUS: dev-db: modified; conf: in sync; cond: pending; dm: retrieved; conn: up – dev-db: modified –

This is the device setting status which indicates that configuration changes were made on FortiManager.

– conf: in sync – This is the sync status which shows that the latest revision history is in sync with Fortigate's configuration. – cond: pending – This is the configuration status which says that configuration changes need to be installed.

Most probably a retrieve was done in the past (dm: retrieved) updating the revision history DB (conf: in sync) and FortiManager device level DB, now there is a new modification on FortiManager device level DB (dev-db: modified) which wasn't installed to FortiGate (cond: pending), hence; revision history DB is not aware of that modification and doesn't match device DB.

Conclusion:– Revision DB does match FortiGate.– No changes were installed to FortiGate yet.– Device DB doesn't match Revision DB.– No changes were done on FortiGate (auto-update) but configuration was retrieved instead

After an Auto-Update or Retrieve:device database = latest revision = FGT

Then after a manual change on FMG end (but no install yet):latest revision = FGT (still) but now device database has been modified (is different).

After reverting to a previous revision in revision history:device database = reverted revision != FGT

## NEW QUESTION 5

- (Exam Topic 1)

View the following exhibit.

### Starting Log (Run the device)

#### Start installing

```
Local-FortiGate $ config user device
Local-FortiGate (device) $ edit "mydevice"
new entry 'mydevice' added
Local-FortiGate (mydevice) $ next
MAC address can not be 0
Node_check_object fail!for mac 00:00:00:00:00:00
Attribute 'mac' value '00:00:00:00:00:00' checkingfail -33
Command fail. Return code 1
Local-FortiGate (device) $ end
...
Local-FortiGate $ config firewall policy
Local-FortiGate (policy) $ edit 2
New entry '2' added
Local-FortiGate (2) $ set name "Device_policy"
Local-FortiGate (2) $ set uuid 64...
Local-FortiGate (2) $ set srcintf "port3"
Local-FortiGate (2) $ set dstintf "port1"
Local-FortiGate (2) $ set srcaddr "all"
Local-FortiGate (2) $ set dstaddr "all"
Local-FortiGate (2) $ set action accept
Local-FortiGate (2) $ set schedule "always"
Local-FortiGate (2) $ set service "ALL"
Local-FortiGate (2) $ set devices "mydevice"
Entry not found in datasource
Value parse error before 'mydevice'
Command fail. Return code -3
Local-FortiGate (2) $ set nat enable
Local-FortiGate (2) $ next
Local-FortiGate (policy) $ end
...
```

Which statement is true regarding this failed installation log?

- A. Policy ID 2 is installed without a source address
- B. Policy ID 2 will not be installed
- C. Policy ID 2 is installed in disabled state
- D. Policy ID 2 is installed without a source device

Answer: D

## NEW QUESTION 6

- (Exam Topic 1)

Refer to the exhibits. Exhibit one.

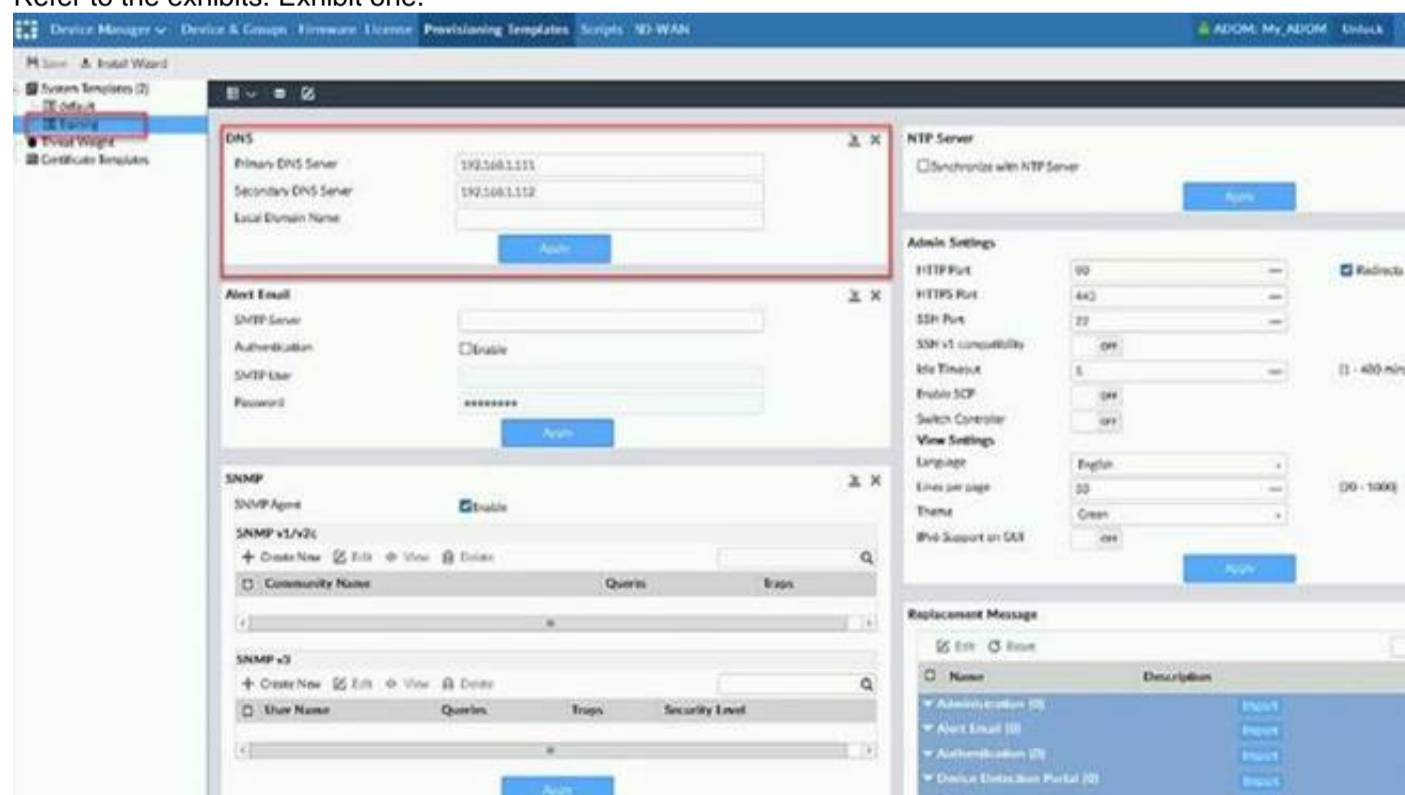
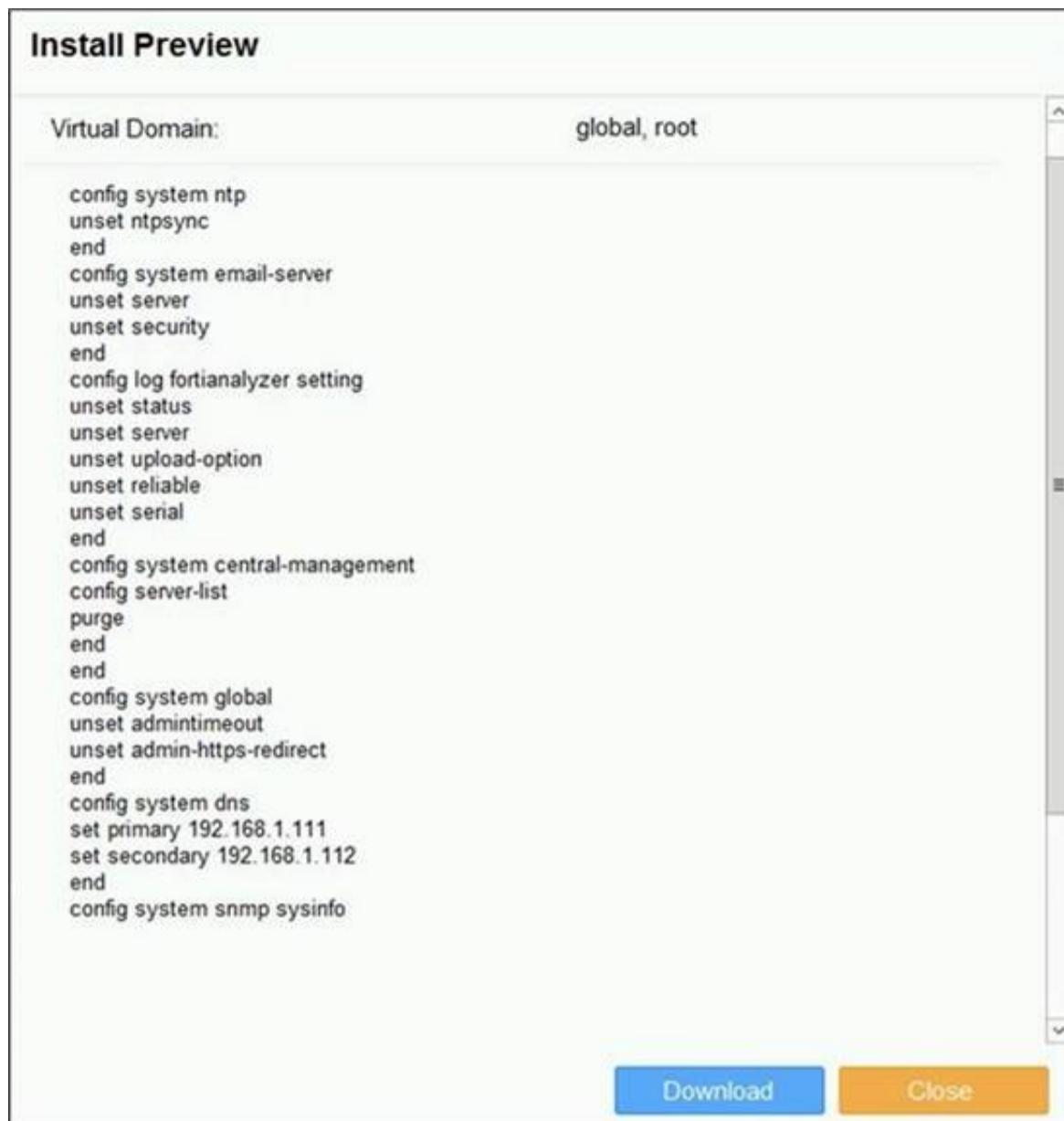


Exhibit two.



An administrator created a new system template named Training with two new DNS addresses on FortiManager. During the installation preview stage, the administrator notices that many unset commands need to be pushed. What can be the main reason for these unset commands?

- A. The DNS addresses in the default system settings are the same as the Training system template
- B. The Training system template has other default settings
- C. The ADOM is locked by another administrator
- D. The Training system template does not have assigned devices

**Answer: B**

#### NEW QUESTION 7

- (Exam Topic 1)

An administrator would like to review, approve, or reject all the firewall policy changes made by the junior administrators. How should the Workspace mode be configured on FortiManager?

- A. Set to workflow and use the ADOM locking feature
- B. Set to read/write and use the policy locking feature
- C. Set to normal and use the policy locking feature
- D. Set to disable and use the policy locking feature

**Answer: A**

#### Explanation:

Reference:

[https://help.fortinet.com/fmgr/50hlp/52/5-2-0/FMG\\_520\\_Online\\_Help/200\\_What's-New.03.03.html](https://help.fortinet.com/fmgr/50hlp/52/5-2-0/FMG_520_Online_Help/200_What's-New.03.03.html)

#### NEW QUESTION 8

- (Exam Topic 1)

View the following exhibit:

```
#diagnose fmupdate view-serverlist fds
Fortiguard Server Comm: Enabled
Server Override Mode: Loose
FDS server list :
```

Index	Address	Port	TimeZone	Distance	Source
*0	10.0.1.50	8890	-5	0	CLI
1	96.45.33.89	443	-5	0	FDNI
2	96.45.32.81	443	-5	0	FDNI
....					
38	fds1.fortinet.com	443	-5	0	DEFAULT

How will FortiManager try to get updates for antivirus and IPS?

- A. From the list of configured override servers with ability to fall back to public FDN servers
- B. From the configured override server list only
- C. From the default server fdsl.fortinet.com
- D. From public FDN server with highest index number only

**Answer:** A

**Explanation:**

Reference:

<https://community.fortinet.com/t5/Fortinet-Forum/Clarification-of-FortiManager-s-quot-Server-Override-Mode>

**NEW QUESTION 9**

- (Exam Topic 2)

Refer to the exhibit.

Which two statements about an ADOM set in Normal mode on FortiManager are true? (Choose two.)

- A. It supports the FortiManager script feature
- B. It allows making configuration changes for managed devices on FortiManager panes
- C. FortiManager automatically installs the configuration difference in revisions on the managed FortiGate
- D. You cannot assign the same ADOM to multiple administrators

**Answer:** AB

**Explanation:**

"FortiGate units in the ADOM will query their own configuration every 5 seconds. If there has been a configuration change, the FortiGate unit will send a diff revision on the change to the FortiManager using the FGFM protocol."

**NEW QUESTION 10**

- (Exam Topic 2)

Which two statements about Security Fabric integration with FortiManager are true? (Choose two.)

- A. The Security Fabric license, group name and password are required for the FortiManager Security Fabric integration
- B. The Fabric View module enables you to generate the Security Fabric ratings for Security Fabric devices
- C. The Security Fabric settings are part of the device level settings
- D. The Fabric View module enables you to view the Security Fabric ratings for Security Fabric devices

**Answer:** CD

**NEW QUESTION 10**

- (Exam Topic 2)

Refer to the exhibit.



An administrator logs into the FortiManager GUI and sees the panes shown in the exhibit.

Which two reasons can explain why the FortiAnalyzer feature panes do not appear? (Choose two.)

- A. The administrator logged in using the unsecure protocol HTTP, so the view is restricted.
- B. The administrator profile does not have full access privileges like the Super\_User profile.
- C. The administrator IP address is not a part of the trusted hosts configured on FortiManager interfaces.

D. FortiAnalyzer features are not enabled on FortiManager.

**Answer:** BD

#### NEW QUESTION 15

- (Exam Topic 3)

An administrator would like to create an SD-WAN using central management. What steps does the administrator need to perform to create an SD-WAN using central management?

- A. First create an SD-WAN firewall policy, add member interfaces to the SD-WAN template and create a static route
- B. You must specify a gateway address when you create a default static route
- C. Remove all the interface references such as routes or policies
- D. Enable SD-WAN central management in the ADOM, add member interfaces, create a static route and SDWAN firewall policies.

**Answer:** D

#### NEW QUESTION 17

- (Exam Topic 3)

What does the diagnose dvm check-integrity command do? (Choose two.)

- A. Internally upgrades existing ADOMs to the same ADON version in order to clean up and correct the ADOM syntax
- B. Verifies and corrects unregistered, registered, and deleted device states
- C. Verifies and corrects database schemas in all object tables
- D. Verifies and corrects duplicate VDOM entries

**Answer:** BD

#### Explanation:

\* 6.2 Study Guide page 305 verify and correct parts of the device manager databases, including:– inconsistent device-to-group and group-to-ADOM memberships– unregistered, registered, and deleted device states– device lock statuses– duplicate VDOM entries

#### NEW QUESTION 22

- (Exam Topic 3)

An administrator would like to create an SD-WAN default static route for a newly created SD-WAN using the FortiManager GUI. Both port1 and port2 are part of the SD-WAN member interfaces.

Which interface must the administrator select in the static route device drop-down list?

- A. port2
- B. virtual-wan-link
- C. port1
- D. auto-discovery

**Answer:** B

#### NEW QUESTION 25

- (Exam Topic 3)

View the following exhibit.

Edit Address

Address Name

Type

IP/Network

Interface



Static Route Configuration  
☐ OFF

Comments  
 0/255

Add to Groups

Advanced Options >

Per-Device Mapping  
☒ ON

+ Add  Edit  Delete

	Name	VDOM	Details
<input type="checkbox"/>	Local-FortiGate	root	IP/Netmask10.0.10/255.255.255.0

An administrator has created a firewall address object, Training, which is used in the Local-FortiGate policy package. When the install operation is performed, which IP Netmask will be installed on the Local-FortiGate, for the Training firewall address object?

- A. 10.0.1.0/24
- B. It will create firewall address group on Local-FortiGate with 192.168.0.1/24 and 10.0.1.0/24 object values

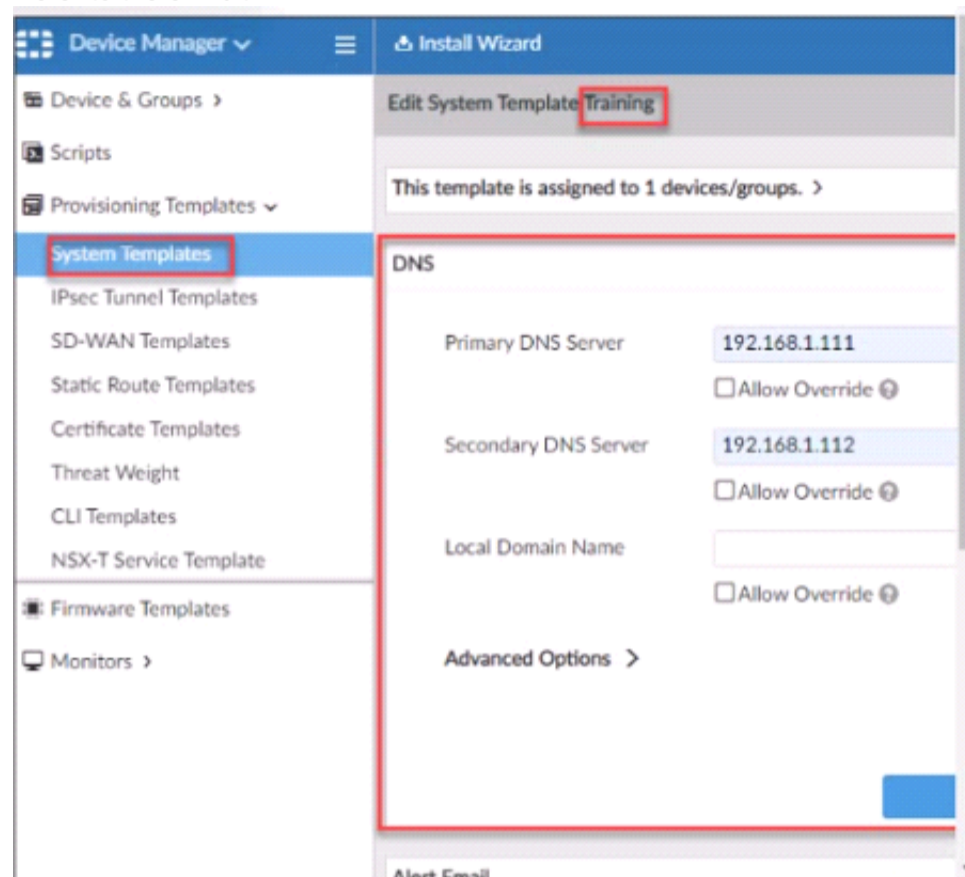
- C. 192.168.0.1/24  
D. Local-FortiGate will automatically choose an IP Network based on its network interface settings.

**Answer:** A

### NEW QUESTION 30

- (Exam Topic 3)

Refer to the exhibit.



According to the error message why is FortiManager failing to add the FortiAnalyzer device?

- A. The administrator must turn off the Use Legacy Device login and add the FortiAnalyzer device to the same network as Forti-Manager  
B. The administrator must select the Forti-Manager administrative access checkbox on the FortiAnalyzer management interface  
C. The administrator must use the Add Model Device section and discover the FortiAnalyzer device  
D. The administrator must use the correct user name and password of the FortiAnalyzer device

**Answer:** C

### NEW QUESTION 34

- (Exam Topic 3)

Which two settings are required for FortiManager Management Extension Applications (MEA)? (Choose two.)

- A. When you configure MEA, you must open TCP or UDP port 540.  
B. You must open the ports to the Fortinet registry  
C. You must create a MEA special policy on FortiManager using the super user profile  
D. The administrator must have the super user profile.

**Answer:** CD

### NEW QUESTION 39

- (Exam Topic 3)

What will happen if FortiAnalyzer features are enabled on FortiManager?

- A. FortiManager will keep all the logs and reports on the FortiManager.  
B. FortiManager will enable ADOMs to collect logs automatically from non-FortiGate devices.  
C. FortiManager will install the logging configuration to the managed devices  
D. FortiManager can be used only as a logging device.

**Answer:** C

### NEW QUESTION 40

- (Exam Topic 3)

Which of the following statements are true regarding reverting to previous revision version from the revision history? (Choose two.)

- A. To push these changes to a managed device, it required an install operation to the managed FortiGate.  
B. Reverting to a previous revision history will generate a new version ID and remove all other historyversions.  
C. Reverting to a previous revision history will tag the device settings status as Auto-Update.  
D. It will modify device-level database

**Answer:** AD

### NEW QUESTION 44

.....

## THANKS FOR TRYING THE DEMO OF OUR PRODUCT

Visit Our Site to Purchase the Full Set of Actual NSE5\_FMG-7.2 Exam Questions With Answers.

We Also Provide Practice Exam Software That Simulates Real Exam Environment And Has Many Self-Assessment Features. Order the NSE5\_FMG-7.2 Product From:

[https://www.2passeasy.com/dumps/NSE5\\_FMG-7.2/](https://www.2passeasy.com/dumps/NSE5_FMG-7.2/)

## Money Back Guarantee

### NSE5\_FMG-7.2 Practice Exam Features:

- \* NSE5\_FMG-7.2 Questions and Answers Updated Frequently
- \* NSE5\_FMG-7.2 Practice Questions Verified by Expert Senior Certified Staff
- \* NSE5\_FMG-7.2 Most Realistic Questions that Guarantee you a Pass on Your FirstTry
- \* NSE5\_FMG-7.2 Practice Test Questions in Multiple Choice Formats and Updatesfor 1 Year