

HP

Exam Questions HPE6-A72

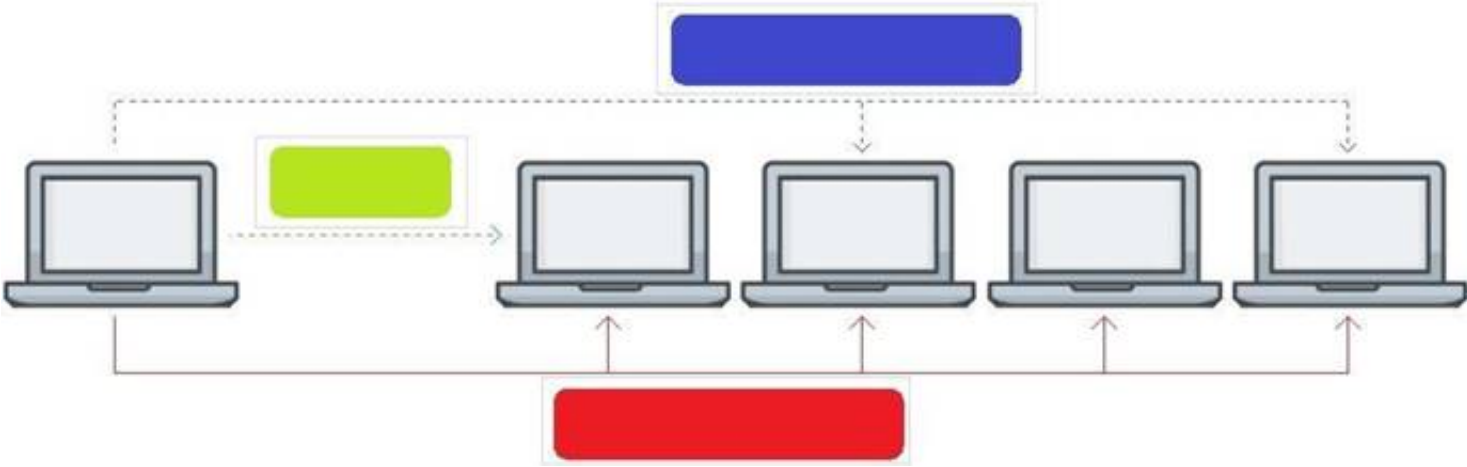
Aruba Certified Switching Associate Exam



NEW QUESTION 1

Click on the colored box that corresponds with the line that best represents Multicast traffic flow.

Answer Area



- A. Mastered
- B. Not Mastered

Answer: A

Explanation:

Diagram Description automatically generated
Blue Box

NEW QUESTION 2

Match the switching term to the correct definition.

Term

- Broadcast Domain
- Collision Domain
- CSMA/CD
- Forwarding Table

Definition

defines the group of devices that are on the same network segment that are capable of receiving and responding to frames destined to FF:FF:FF:FF:FF:FF

the FIB used by switches matching known-source mac-addresses to the layer one port they are learned on

the mechanism used by Compute NICs and Switchports operating in half-duplex to detect and recover from frame collisions

the segment of a network connected by a shared medium, such as a hub, that is affected when two or more frames are sent at the same time

- A. Mastered
- B. Not Mastered

Answer: A

Explanation:

Term		Definition
Broadcast Domain	Broadcast Domain	defines the group of devices that are on the same network segment that are capable of receiving and responding to frames destined to FF:FF:FF:FF:FF:FF
Collision Domain		
CSMA/CD	Forwarding Table	the FIB used by switches matching known-source mac-addresses to the layer one port they are learned on
Forwarding Table		
	CSMA/CD	the mechanism used by Compute NICs and Switchports operating in half-duplex to detect and recover from frame collisions
	Collision Domain	the segment of a network connected by a shared medium, such as a hub, that is affected when two or more frames are sent at the same time

NEW QUESTION 3

Place the OSI Layers in the correct order. Arrange them from least to greatest, starting with Layer 1 on the top, and progressing to Layer 7 on the bottom.

OSI Layer

Application Layer

Data Link Layer

Network Layer

Physical Layer

Presentation Layer

Session Layer

Transport Layer

Order

>

<

↑

↓

- A. Mastered
- B. Not Mastered

Answer: A

Explanation:
Graphical user interface, application Description automatically generated

NEW QUESTION 4

Match the available stacking feature to the correct AOS-CX switch model. Stacking features may be used more than once.

Stacking Feature

VSF

VSX

Answer Area

Stacking Feature	AOS-CX Switch Model
	6300M
	6300F
	8320
	8400
	6400

- A. Mastered
- B. Not Mastered

Answer: A

Explanation:

Stacking Feature	Answer Area												
<div><div>VSF</div><div>VSX</div></div>	<table><tr><th>Stacking Feature</th><th>AOS-CX Switch Model</th></tr><tr><td><div>VSF</div></td><td>6300M</td></tr><tr><td><div>VSF</div></td><td>6300F</td></tr><tr><td><div>VSX</div></td><td>8320</td></tr><tr><td><div>VSX</div></td><td>8400</td></tr><tr><td><div>VSX</div></td><td>6400</td></tr></table>	Stacking Feature	AOS-CX Switch Model	<div>VSF</div>	6300M	<div>VSF</div>	6300F	<div>VSX</div>	8320	<div>VSX</div>	8400	<div>VSX</div>	6400
Stacking Feature	AOS-CX Switch Model												
<div>VSF</div>	6300M												
<div>VSF</div>	6300F												
<div>VSX</div>	8320												
<div>VSX</div>	8400												
<div>VSX</div>	6400												

NEW QUESTION 5

Which two statements accurately describe the features of NetEdit? (Choose two.)

- A. NetEdit can be used to configure and validate any third-party device that supports SSH and REST access.
- B. NetEdit includes trial licensing for up to 10 nodes.
- C. NetEdit can perform configuration and compliance validation.
- D. NetEdit supports viewing and editing multiple devices using a single deployment plan.
- E. NetEdit can run on a mobile device using Android or Apple IOS.

Answer: CD

NEW QUESTION 6

What are two methods for remotely managing an Aruba AOS-CX switch? (Choose two.)

- A. SNMPv2c
- B. HTTPS
- C. USB-C console
- D. Telnet
- E. SSH

Answer: BE

NEW QUESTION 7

Which command can be used to find the serial number of an Aruba OS-CX switch?

- A. The command inventory
- B. The command version
- C. The command show running-configuration
- D. The command show system

Answer: D

NEW QUESTION 8

Refer to the exhibit.

SW1# show vlan					
VLAN	Name	Status	Reason	Type	Interfaces
1	DEFAULT_VLAN_1	up	ok	default	<output omitted>
10	Engineering	up	ok	static	1/1/1-1/1/7
20	Guest	up	ok	static	1/1/11-1/1/14

The above command was applied to an Aruba AOS-CX 6300M 24-port switch with 4-port SFP56 uplinks. All ports are set as access switchports. Which ports carry VLAN 1 traffic?

- A. 1/1/8, 1/1/10, 1/1/5-1/1/24
- B. 1/1/1-1/1/28
- C. 1/1/1-1/1/24
- D. 1/1/8-1/1/10, 1/1/5-1/1/28

Answer: D

NEW QUESTION 9

What are two OSPF attributes within the hello messages that must match to successfully establish neighbor relationships? (Choose two.)

- A. Router ID
- B. Priority
- C. Hello and Dead intervals
- D. Area ID
- E. Process ID

Answer: CD

NEW QUESTION 10

Refer to the exhibit.

VLAN	Name	Mode	Mapping
1	DEFAULT_VLAN_1	native-untagged	port
10	Sales	trunk	port
20	Service	trunk	port
30	Customer	trunk	port

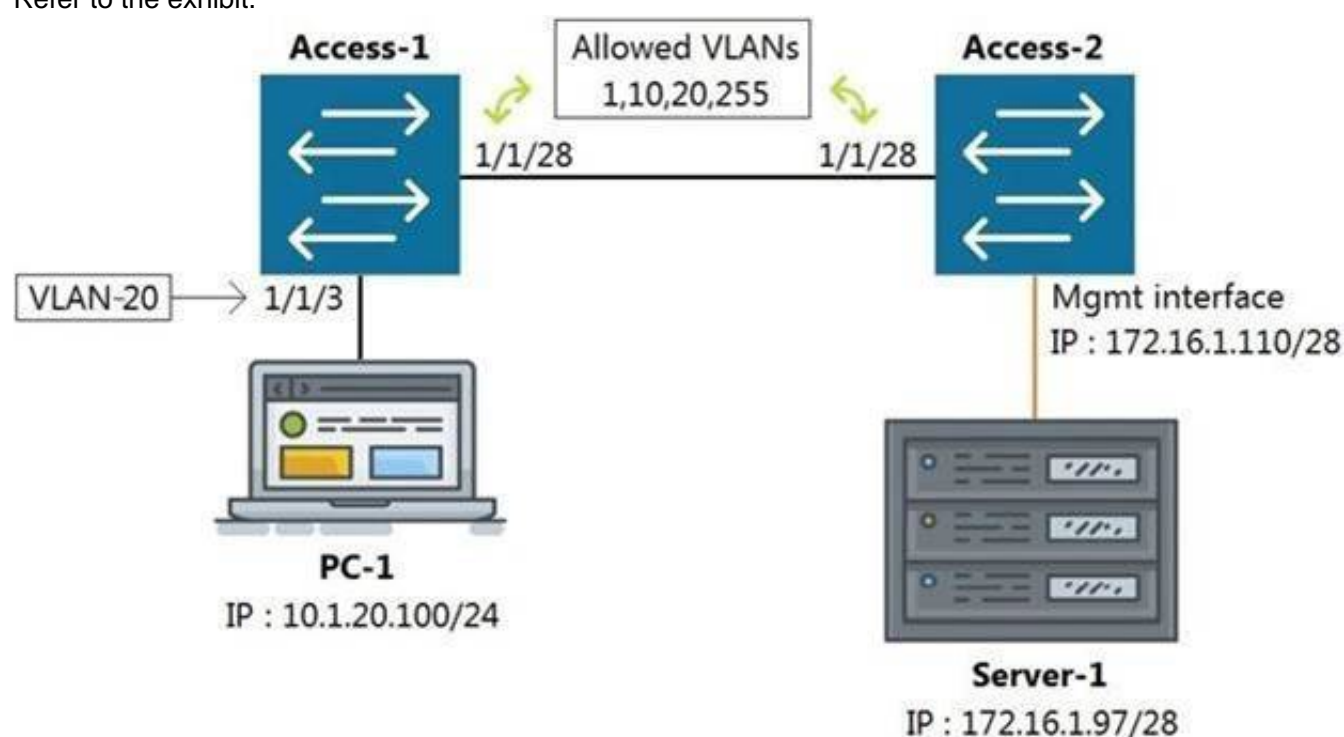
Which command produces the above output?

- A. show interface port 1/1/10 trunk
- B. show vlan port 1/1/10
- C. show trunk port 1/1/10 extended
- D. show interface port 1/1/10 switchport

Answer: C

NEW QUESTION 10

Refer to the exhibit.



All switches are running Aruba OS-CX. While working in the terminal of Access-2, you are unable to reach Server-1 using SSH. What is the correct command to ping Server-1 from Access-2 to test reachability?

- A. Access-2# ping6 172.16.1.97 vrf mgm
- B. Access-2# ping 172.16.1.97
- C. Access-2# ping 172.16.1.97 vrf default
- D. Access-2# ping 172.16.1.97 vrf mgmt

Answer: D

NEW QUESTION 12

With what other technology does Half Duplex communication closely match?

- A. a pair of fiber optic strands allowing transmit on one and receive on the other at the same time
- B. a mobile phone call
- C. point-to-point connections between two switches allowing concurrent transmit and receive
- D. CB radio using push-to-talk

Answer: D

NEW QUESTION 14

What are two features of the three-tier designs? (Choose two.)

- A. removes the distribution layer in favor of a spine-leaf design used in modern data center deployments
- B. adds a distribution layer to free up resources from the Core for improved performance and routing throughput
- C. a more scalable design over by leveraging a distribution layer to handle Layer 3 routing and access control in large deployments
- D. uses only Layer 2 access on the Access and the Core with Layer 3 routing and access control provided at the distribution layer

E. is considered legacy by requiring a large flat layer-two broadcast domain from Core to Access and should be avoided

Answer: BC

NEW QUESTION 15

Match each description to the correct management tool for Aruba AOS-CX.

Management Tools	Answer Area	
NetEdit	Management Tool	Description
Aruba CX Mobile App		can run as an OVA
		requires AOS-CX switches to support HTTPS, SSH, and REST access
		connects to switches via Bluetooth or Wi-Fi
		includes a feature for stacking automation
		supports SNMPv2c to discover third-party devices

- A. Mastered
- B. Not Mastered

Answer: A

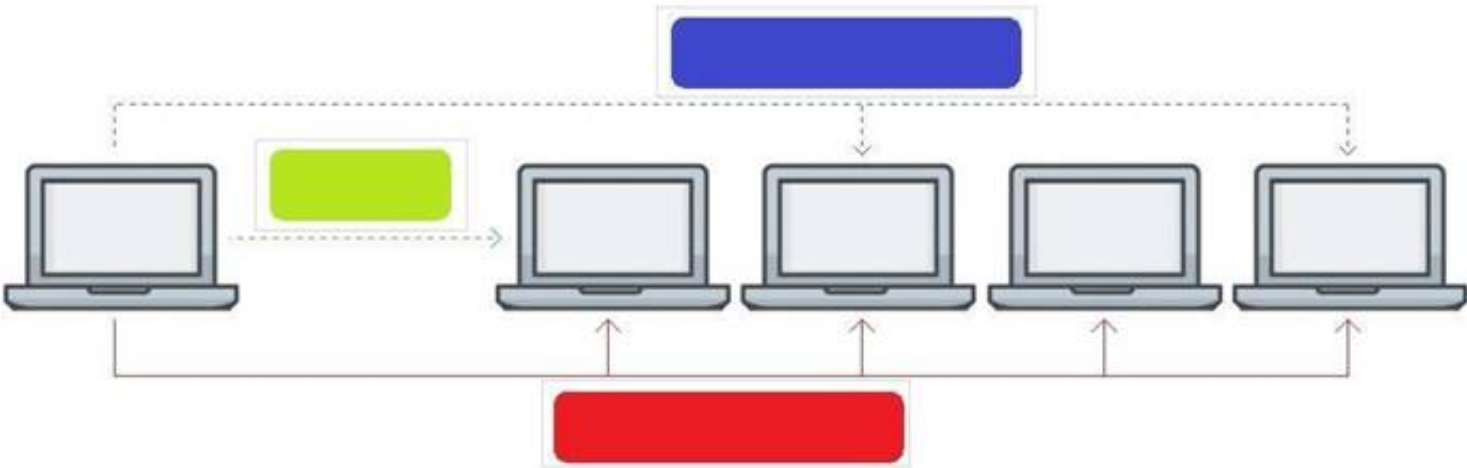
Explanation:

Management Tools	Answer Area	
NetEdit	Management Tool	Description
Aruba CX Mobile App	NetEdit	can run as an OVA
	NetEdit	requires AOS-CX switches to support HTTPS, SSH, and REST access
	Aruba CX Mobile App	connects to switches via Bluetooth or Wi-Fi
	Aruba CX Mobile App	includes a feature for stacking automation
	NetEdit	supports SNMPv2c to discover third-party devices

NEW QUESTION 20

Click on the colored box that corresponds with the line that best represents Broadcast traffic flow.

Answer Area

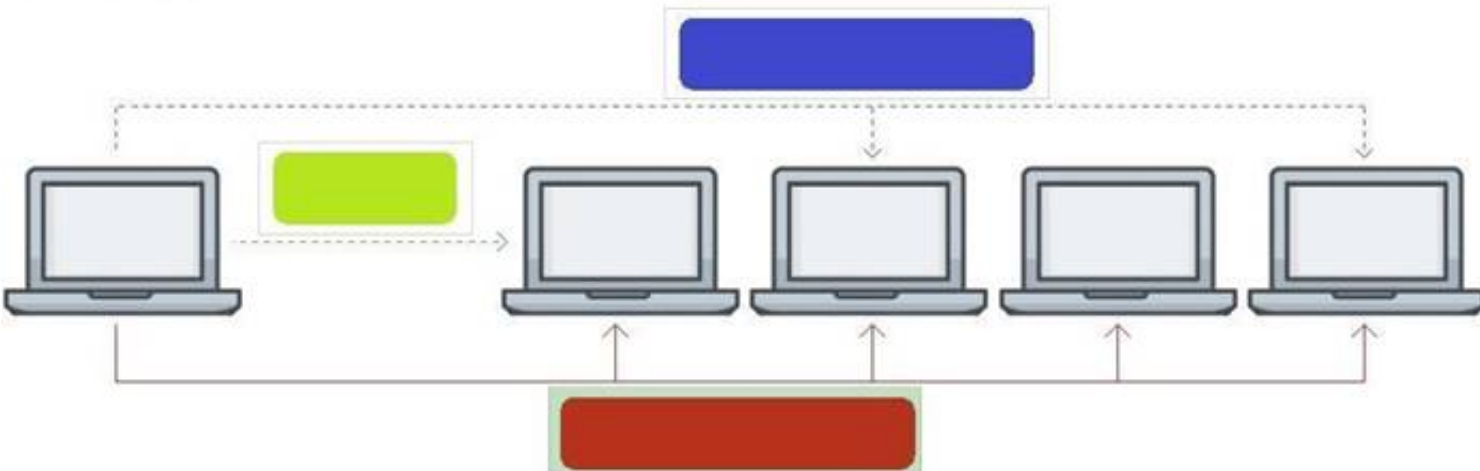


- A. Mastered
- B. Not Mastered

Answer: A

Explanation:

Answer Area



NEW QUESTION 22

What are two features in a 2-Tier design that are implemented at the Access layer? (Choose two.)

- A. VPN access
- B. WAN/MPLS connectivity
- C. Endpoint Access
- D. Deep packet inspection
- E. Power over Ethernet

Answer: CE

NEW QUESTION 24

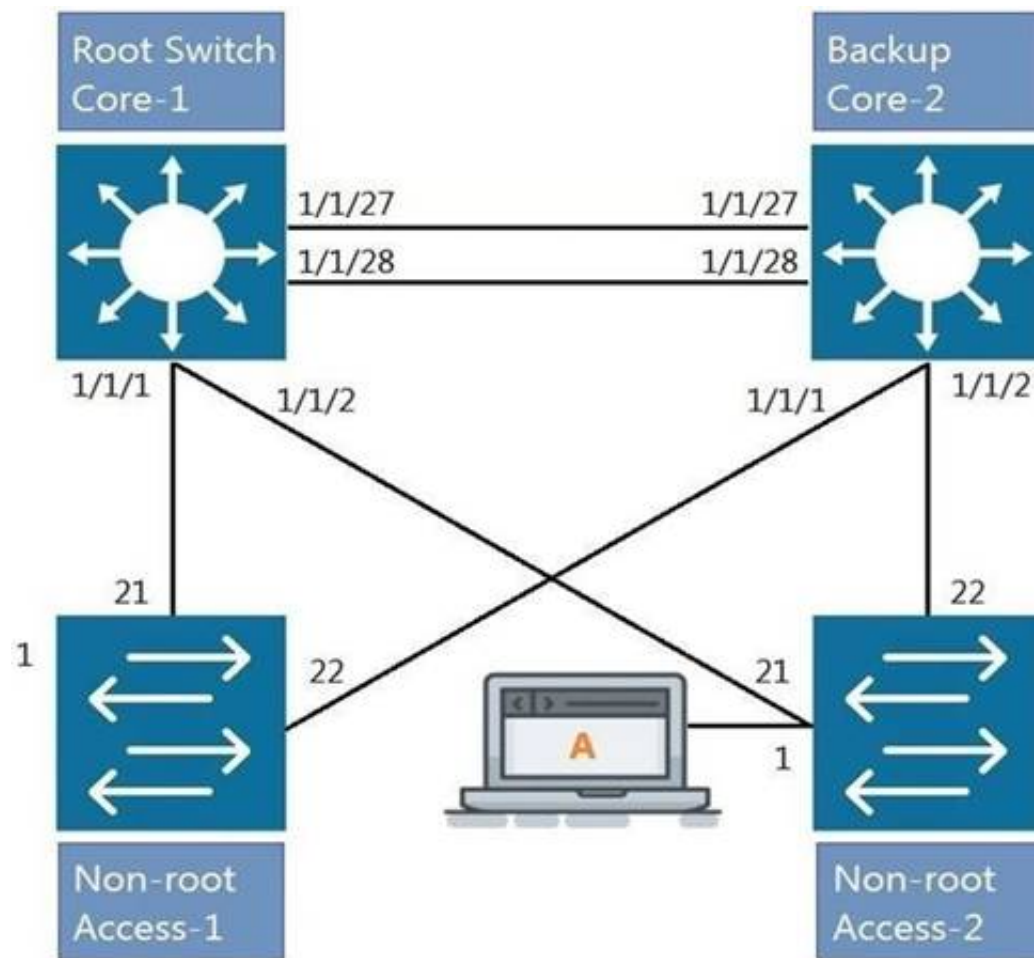
The following command is issued: Switch# checkpoint rollback start What is the result?

- A. The command will fail because rollback commands must be issued from global-config mode.
- B. The switch will revert the running-configuration to the checkpoint called 'start1 without a reboot.
- C. The command will fail because it is incomplete.
- D. The switch will use the checkpoint 'rollback1 as the starting configuration on next reboot.

Answer: B

NEW QUESTION 29

Refer to the exhibit.



All four switches in the diagram have been configured with the region name "Aruba1". What two other MSTP configurations must match for switches within the same MST region? (Choose two.)

- A. MST region type
- B. MST Bridge ID
- C. MST version number
- D. MST revision number
- E. MST VLAN to instance mapping

Answer: DE

NEW QUESTION 31

Which two commands will save the running-config so that changes will be loaded automatically on the next reboot? (Choose two.)

- A. write memory
- B. save
- C. copy config config1 config startup-config
- D. copy running-config startup-config
- E. copy running-config checkpoint boot-config

Answer: AD

NEW QUESTION 33

Core# configure terminal Core(config)# vrf Green Core(config-vrf)# exit Core(config)#
 Core(config)# interface vlan 50 Core(config-if-vlan)# ?

Given the configuration on the CORE switch shown above, what command would follow to assign the switched virtual interface (SVI) vlan 50 to the VRF created?

- A. Core(config-if-vlan)# vrf attach Green
- B. Core(config-if-vlan)# ip vpn-instance Green
- C. Core(config-if-vlan)# ip vrf forwarding Green
- D. Core(config-if-vlan)# routing-context Green vrf

Answer: A

NEW QUESTION 34

Which network category applies to a SOHO internal network?

- A. SD-WAN
- B. LAN
- C. WAN
- D. Internet

Answer: D

NEW QUESTION 39

Refer to the exhibit.

```
T11-Access-2# show lldp configuration

LLDP Global Configuration
=====
LLDP Enabled                : Yes
LLDP Transmit Interval     : 30
LLDP Hold Time Multiplier  : 4
LLDP Transmit Delay Interval : 2
LLDP Reinit Time Interval  : 2

TLVs Advertised
=====

Management Address
Port Description
Port VLAN-ID
System Capabilities
System Description
System Name
OUI

LLDP Port Configuration
=====

PORT          TX-ENABLED    RX-ENABLED
-----
1/1/1         Yes          Yes
1/1/2         Yes          Yes
               <--- output omitted --->
1/1/27        Yes          Yes
1/1/28        Yes          Yes
```

What configuration is needed in order for "show LLDP configuration" to show this output?

- A. none; LLDP is enabled by default on Aruba switches
- B. configuring LLDP both globally and on the interfaces
- C. enabling LLDP on the interfaces only
- D. configuring LLDP globally only

Answer: A

NEW QUESTION 41

You have completed a successful VSF stack between two switches.
Without manually assigning a backup switch, what is the expected output when issuing a show vsf command?

- A. T1-6300-A# show vsf
<omitted>
Mbr Mac Address type Status ID

1 88:3a:30:a3:e5:40 JL660A Commander
2 88:3a:30:a6:d9:80 JL660A Secondary
- B. T1-6300-A# show vsf
<omitted>
Mbr Mac Address type Status ID

1 88:3a:30:a3:e5:40 JL660A Primary
2 88:3a:30:a6:d9:80 JL660A Secondary
- C. T1-6300-A# show vsf
<omitted>
Mbr Mac Address type Status ID

1 88:3a:30:a3:e5:40 JL660A Master
2 88:3a:30:a6:d9:80 JL660A Member
- D. T1-6300-A# show vsf
<omitted>
Mbr Mac Address type Status ID

1 88:3a:30:a3:e5:40 JL660A Master
2 88:3a:30:a6:d9:80 JL660A Standby

- A. Option A
B. Option B
C. Option C
D. Option D

Answer: D

NEW QUESTION 46

.....

Thank You for Trying Our Product

We offer two products:

1st - We have Practice Tests Software with Actual Exam Questions

2nd - Questions and Answers in PDF Format

HPE6-A72 Practice Exam Features:

- * HPE6-A72 Questions and Answers Updated Frequently
- * HPE6-A72 Practice Questions Verified by Expert Senior Certified Staff
- * HPE6-A72 Most Realistic Questions that Guarantee you a Pass on Your FirstTry
- * HPE6-A72 Practice Test Questions in Multiple Choice Formats and Updatesfor 1 Year

100% Actual & Verified — Instant Download, Please Click
[Order The HPE6-A72 Practice Test Here](#)