



# Microsoft

## Exam Questions mb-300

Microsoft Dynamics 365 Unified Operations Core

## About ExamBible

*[Your Partner of IT Exam](#)*

## Found in 1998

ExamBible is a company specialized on providing high quality IT exam practice study materials, especially Cisco CCNA, CCDA, CCNP, CCIE, Checkpoint CCSE, CompTIA A+, Network+ certification practice exams and so on. We guarantee that the candidates will not only pass any IT exam at the first attempt but also get profound understanding about the certificates they have got. There are so many alike companies in this industry, however, ExamBible has its unique advantages that other companies could not achieve.

## Our Advances

### \* 99.9% Uptime

All examinations will be up to date.

### \* 24/7 Quality Support

We will provide service round the clock.

### \* 100% Pass Rate

Our guarantee that you will pass the exam.

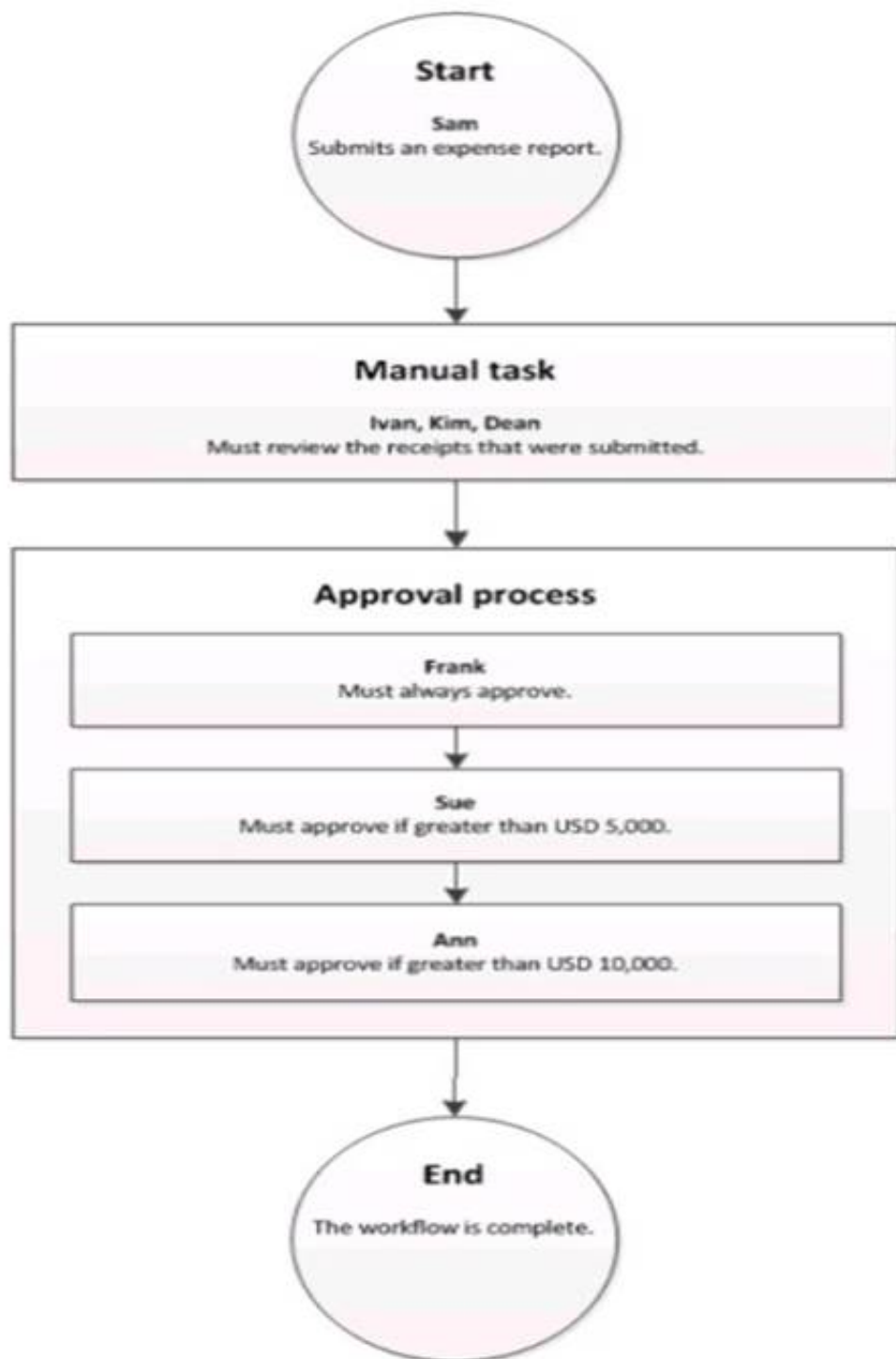
### \* Unique Gurantee

If you do not pass the exam at the first time, we will not only arrange FULL REFUND for you, but also provide you another exam of your claim, ABSOLUTELY FREE!

NEW QUESTION 1

HOTSPOT - (Topic 6)

A company sets up a workflow for expense reports. An employee named Sam submits an expense report totaling USD 7,000 to go through the workflow.



Use the drop-down menus to select the answer choice that answers each question based on the information presented in the graphic.

NOTE: Each correct selection is worth one point.

Answer Area

Questions	Answer choice
What statement about the workflow is correct?	<div>Ann can reject the expense report.</div> <div>Ivan, Kim, and Dean must all complete the manual task.</div> <div>The workflow ends after Sue approves the expense report.</div> <div>The expense report will go through Frank, Sue, and Ann for approval.</div>
What type of workflow is this?	<div>Workflow with roles</div> <div>Workflow with a manual decision</div> <div>Workflow with multiple users in a task</div> <div>Workflow with a line-item workflow element</div>

- A. Mastered
- B. Not Mastered

Answer: A

Explanation:

Answer Area

Questions	Answer choice
What statement about the workflow is correct?	<div>Ann can reject the expense report.</div> <div>Ivan, Kim, and Dean must all complete the manual task.</div> <div>The workflow ends after Sue approves the expense report.</div> <div>The expense report will go through Frank, Sue, and Ann for approval.</div>
What type of workflow is this?	<div>Workflow with roles</div> <div>Workflow with a manual decision</div> <div>Workflow with multiple users in a task</div> <div>Workflow with a line-item workflow element</div>

NEW QUESTION 2

- (Topic 6)

You are a Dynamics 365 for Finance and Operations system administrator for a new implementation.

You have a solution that needs to be tested using User Acceptance Testing (UAT). You have created a Business process modeler (BPM) library.

You need to validate and support the solution.

Which three actions should you perform? Each answer presents part of the solution.

- A. Upload the saved recording to BPM.
- B. Create a new Business process library
- C. Export the task recording to Microsoft Word and upload it to BPM.
- D. Record test cases and save them to BPM.
- E. Create and save a new task recording.

Answer: ABE

NEW QUESTION 3

HOTSPOT - (Topic 6)

Your company is upgrading to Dynamics 365 Finance. The company has 20 offices in 20 countries/regions. Each office currently uses their own Microsoft Dynamics AX 2012 R3 implementation. Transactions occurring in the systems are high volume. Viewing data from each office requires logging into 20 different AX implementations and takes hours to complete.

You must upgrade to a solution that provides near real-time data refreshes and views the data in a single Power BI dashboard.

You need to implement the solution.

Which technology should you use? To answer, select the appropriate options in the answer area.

NOTE: Each correct selection is worth one point.

Requirement	Technology
Refresh data	<div><div></div><div>▼</div><div>Batch framework</div><div>Dual-write</div><div>Azure Batch</div><div>AzureWebJobs</div></div>
Synchronized data for reporting	<div><div></div><div>▼</div><div>Entity store</div><div>Dual-write</div><div>JSON documents</div><div>Lifecycle Services (LCS)</div></div>

- A. Mastered
- B. Not Mastered

Answer: A

Explanation:

Requirement	Technology
Refresh data	<div><div></div><div>▼</div><div>Batch framework</div><div>Dual-write</div><div>Azure Batch</div><div>AzureWebJobs</div></div>
Synchronized data for reporting	<div><div></div><div>▼</div><div>Entity store</div><div>Dual-write</div><div>JSON documents</div><div>Lifecycle Services (LCS)</div></div>

NEW QUESTION 4

SIMULATION - (Topic 6)

You are a functional consultant for Contoso Entertainment System USA (USMF).

You need to create a new workspace named Contoso Invoice that will display a list of all the open customer invoices.

To complete this task, sign in to the Dynamics 365 portal.

- A. Mastered
- B. Not Mastered

Answer: A

**Explanation:**

- ? When you log in to Dynamics, you should see your workspaces page. Right-click in a blank area of the page and select Personalize TilePageContainer.
- ? Click Add a workspace
- ? Right-click on the new workspace and select Personalize < new workspace name>.
- ? Name the workspace to Contoso Invoice.
- ? Navigate to the Customer Invoices page.
- ? Filter the page to display only open invoices.
- ? Click on ... > Options.
- ? Click on Add to workspace and select the Contoso Invoice workspace from the drop-down list.
- ? In the Properties drop-down list, select List then click Configure.
- ? Give the list a name such as Open Customer Invoices then click OK.

**NEW QUESTION 5**

SIMULATION - (Topic 6)

You are a functional consultant for Contoso Entertainment System USA (USMF).

You need to ensure that when you purchase item number 1000 named Surface Pro 128GB, you can request a single unit or a box of eight units.

To complete this task, sign in to the Dynamics 365 portal.

- A. Mastered
- B. Not Mastered

**Answer:** A

**Explanation:**

You need to configure a Unit of Measure for the box of eight units and another Unit of Measure for the single unit if one doesn't already exist.

- ? Navigate to item number 1000.
- ? Select Item > Units of Measure.
- ? Click New.
- ? In the Code field, select an appropriate code such as Carton.
- ? In the QTY per unit of measure field, enter 8.
- ? There is likely to be a default Unit of Measure for purchasing a single unit. If there isn't, click New again.
- ? Select the PCS for the Code and enter 1 for the QTY per unit of measure.

**NEW QUESTION 6**

SIMULATION - (Topic 6)

You are a functional consultant for Contoso Entertainment System USA (USMF).

You need to create a new number sequence named Fabrikam that will be used to invoice a new customer. The sequence number must support the manual entry of invoice numbers.

To complete this task, sign in to the Dynamics 365 portal.

- A. Mastered
- B. Not Mastered

**Answer:** A

**Explanation:**

- ? Go to Navigation pane > Modules > Organization administration > Number sequences > Number sequences.
- ? Select Number sequence.
- ? In the Number sequence code field, type a value.
- ? In the Name field, type Fabrikam.
- ? In the Segments section, click Add.
- ? Select Alphanumeric and enter a value such as #### (for a four-digit number)
- ? In the General section, ensure that Manual is set to Yes.
- ? Under Number Allocation, enter 1 in the Smallest field.
- ? Click Save to save the number sequence.

**NEW QUESTION 7**

- (Topic 6)

A company implement Dynamics 365 Finance, the company uses business events to trigger sales order processes.

The cutoff for shipping customer orders ins 3:00 PM.

You need to notify the warehouse manager in a Microsoft Teams channel whenever business events occur after 3:00 PM.

Which tool should you use?

- A. Power BI
- B. Power Automate
- C. Workflow framework
- D. Power Virtual Agents

**Answer:** B

**NEW QUESTION 8**

SIMULATION - (Topic 6)

You are a functional consultant for Contoso Entertainment System USA (USMF).

You need to ensure that when a purchase of 10 units of a product named Surface Pro 128GB is initiated, the system can receive an overdelivery of an additional 10 units.

To complete this task, sign in to the Dynamics 365 portal.

- A. Mastered
- B. Not Mastered

Answer: A

Explanation:

- You need to allow an overdelivery percentage of 100% to allow overdelivery of 10 units on an order of 10 units. (100% of 10 units is 10 units)
- \* 1. Navigate to Product information management > Common > Released products. Select the product named Surface Pro 128GB.
  - \* 2. Click Edit in the Action Pane.
  - \* 3. Go to the Purchase tab.
  - \* 4. In the Overdelivery field, enter 100.
  - \* 5. Click Save to save the changes.

NEW QUESTION 9

- (Topic 6)

Note: This question is part of a series of questions that present the same scenario. Each question in the series contains a unique solution that might meet the stated goals. Some question sets might have more than one correct solution, while others might not have a correct solution.

After you answer a question in this section, you will NOT be able to return to it. As a result, these questions will not appear in the review screen.

You are a Dynamics 365 for Finance and Operations system administrator. You have a test environment that is used by several people at any given time. You create a new data entity in your development and migrate the code to the test environment. In the test environment, you are unable to find the data entity in the list. You need to locate the data entity.

Solution: In the Data management framework parameter screen, refresh the Entity list. Does the solution meet the goal?

- A. Yes
- B. No

Answer: A

NEW QUESTION 10

HOTSPOT - (Topic 6)

You are planning to import trade agreement journal lines into Dynamics 365 Supply Chain Management from a Microsoft Excel workbook. You configure the source and target mapping as shown in the table below.

Auto-Generated	Auto Default	Source field	Staging field
No	No	JournalNo	JournalNumber
No	No	ItemCode	ItemNumber
Yes	No	Auto	LineNumber
No	No	SalesPrice	Price
No	Yes	Default	CurrencyCode

You need to validate the Excel file and the mappings.

Which field or fields originate from which sources? To answer, select the appropriate options in the answer area.

NOTE: Each correct selection is worth one point.

Answer Area

Source

Fields in the Excel file

Field calculated by the system

Field calculated by the system

Field fixed to a single value

Field

JournalNo, ItemCode, SalesPrice  
JournalNumber, ItemNumber, Price  
JournalNo, ItemCode, A  
JournalNumber, ItemNumber, LineNumber, Price, CurrencyCode

LineNumber  
JournalNumber  
ItemNumber  
CurrencyCode

CurrencyCode  
JournalNumber  
ItemNumber  
LineNumber

- A. Mastered
- B. Not Mastered

Answer: A

Explanation:

Answer Area

Source

Fields in the Excel file

Field calculated by the system

Field calculated by the system

Field fixed to a single value

Field

JournalNo, ItemCode, SalesPrice  
JournalNumber, ItemNumber, Price  
JournalNo, ItemCode, A  
JournalNumber, ItemNumber, LineNumber, Price, CurrencyCode

LineNumber  
JournalNumber  
ItemNumber  
CurrencyCode

CurrencyCode  
JournalNumber  
ItemNumber  
LineNumber

NEW QUESTION 10

- (Topic 6)

A company acquirer an analytics company that performs research on customer online purchases.

You must import customer purchase data from a pre-existing canvas-driven app Into a two Dynamics 365 Finance instance. Data must be mapped to the out-of-the-box entities. The canvas-driven app uses Microsoft Excel as a data store.

You need to perform the migration. What should you use?

- A. Data Management Framework configuration data template
- B. Data entity change tracking
- C. Dual-write
- D. Microsoft Azure Data Lake

Answer: A



**Explanation:**

Reference:

<https://docs.microsoft.com/en-us/dynamics365/fin-ops-core/dev-itpro/data-entities/configuration-data-templates>

**NEW QUESTION 14**

- (Topic 6)

Note: This question is part of a series of questions that present the same scenario. Each question in the series contains a unique solution that might meet the stated goals. Some question sets might have more than one correct solution, while others might not have a correct solution.

After you answer a question in this section, you will NOT be able to return to it. As a result, these questions will not appear in the review screen.

You are a Dynamics 365 for Finance and Operations system administrator. You have a test environment that is used by several people at any given time.

You create a new data entity in your development and migrate the code to the test environment. In the test environment, you are unable to find the data entity in the list.

You need to locate the data entity.

Solution: Restart the Application Object Server (AOS) of the test environment. Does the solution meet the goal?

- A. Yes
- B. No

**Answer: B**

**NEW QUESTION 18**

- (Topic 6)

Note: This question is part of a series of questions that present the same scenario. Each question in the series contains a unique solution that might meet the stated goals. Some question sets might have more than one correct solution, while others might not have a correct solution.

After you answer a question in this section, you will NOT be able to return to it. As a result, these questions will not appear in the review screen.

You are configuring a Dynamics 365 for Finance and Operations environment. You must set up Microsoft Excel data exports.

You need to verify that the solution will result in a successful export of data to Excel. Solution: Use OAuth authentication.

Does the solution meet the goal?

- A. Yes
- B. No

**Answer: B**

**NEW QUESTION 20**

- (Topic 6)

You are implement Dynamics 365 Finance.

Data must be imported and exported by using the data management framework.

You need to identify which data management scenario is supported by using the data management framework.

Which scenario is supported?

- A. Data upgrade
- B. Package deployment
- C. Data expansion
- D. Data migration

**Answer: D**

**NEW QUESTION 24**

HOTSPOT - (Topic 6)

A company implements Dynamics 365 Commerce. The company email provider blocks sending and receiving of AXTR files. The company disables removable storage. A new finance employee attempts to generate deposit slips on the employee's computer but cannot. You need to do the following:

- Capture the user's attempt to generate deposit slips on the user's computer.
- Load the capture on your computer.
- Identify the missing duties for the user.

What should you do? To answer, select the appropriate options in the answer area. NOTE: Each correct selection is worth one point.

Requirement	Action
Capture the activity.	<div><div>Use the Task recorder.</div><div>Use the Security diagnostics for task recorder tool.</div><div>Use the Task recorder.</div><div>Use the Business process modeler.</div><div>Use the Regression suite automation tool.</div></div>
Load the capture.	<div><div>Open the capture from this PC.</div><div>Open the capture from Lifecycle Services.</div><div>Open the capture from this PC.</div></div>
Identify the missing duties of the user.	<div><div>Use the Security diagnostics for task recorder tool.</div><div>Use the Security diagnostics for task recorder tool.</div><div>Use the Task recorder.</div><div>Use the Business process modeler.</div><div>Use the Regression suite automation tool.</div></div>

- A. Mastered
- B. Not Mastered

**Answer: A**

Explanation:

Answer Area	
Requirement	Action
Capture the activity.	<div>Use the Task recorder.</div> <div>Use the Security diagnostics for task recorder tool.</div> <div>Use the Task recorder.</div> <div>Use the Business process modeler.</div> <div>Use the Regression suite automation tool.</div>
Load the capture.	<div>Open the capture from this PC.</div> <div>Open the capture from Lifecycle Services.</div> <div>Open the capture from this PC.</div>
Identify the missing duties of the user.	<div>Use the Security diagnostics for task recorder tool.</div> <div>Use the Security diagnostics for task recorder tool.</div> <div>Use the Task recorder.</div> <div>Use the Business process modeler.</div> <div>Use the Regression suite automation tool.</div>

NEW QUESTION 26

- (Topic 6)

You have the following Dynamics 365 Finance instances:

Instance	Comments
1	Contains configuration data for a company named CompanyA
2	Contains a blank setup for a company named CompanyB

You must copy the configuration data from CompanyA to CompanyB. Solution: Export from CompanyA. Import to CompanyB. Does the solution meet the goal?

- A. Yes
- B. No

Answer: A

Explanation:

Reference:

<https://docs.microsoft.com/en-us/dynamics365/fin-ops-core/dev-itpro/data-entities/copy-configuration>

NEW QUESTION 29

DRAG DROP - (Topic 6)

A company is implementing Dynamics 365 Finance.

The company is evaluating role-based security for an accounting manager who must issue refunds to customers.

You need to select a security component for each requirement.

Which security components should you assign? To answer, drag the appropriate security components to the correct requirements. Each security component may be used once, more than once, or not at all. You may need to drag the split bar between panes or scroll to view content.

NOTE: Each correct selection is worth one point.

Security components	Requirement	Security component
duty	accounting manager	
privilege	refund customer	
role		

- A. Mastered
- B. Not Mastered

Answer: A

Explanation:

<https://learn.microsoft.com/en-us/dynamicsax-2012/appuser-itpro/accounting-manager-security-role-ledgeraccountingmanager>  
Role and Duty

NEW QUESTION 34

DRAG DROP - (Topic 6)

A company needs to move data from multiple legacy databases and s separate Dynamic 365 instance into a Dynamic 365 Finance environment.

You need to plan the migration strategy.

Which tool should you use for each requirement? To answer, drag the appropriate components to the correct requirements. Each component may be used once, more than once, or not at all, You may need to drag the split bar between panes or scroll to view content.

NOTE: Each correct selection is worth one point.



Components		Answer Area	
Staging tables	Entities	<b>Requirement</b> Place the legacy database data in a location where you can manipulate and verify the data. Migrate sales configuration data from a test environment to a production environment.	<b>Component</b> Component
Configuration data projects	Configuration Manager		Component

- A. Mastered  
B. Not Mastered

Answer: A

Explanation:

Components		Answer Area	
Staging tables	Entities	<b>Requirement</b> Place the legacy database data in a location where you can manipulate and verify the data. Migrate sales configuration data from a test environment to a production environment.	<b>Component</b> Staging tables
Configuration data projects	Configuration Manager		Configuration data projects

#### NEW QUESTION 38

HOTSPOT - (Topic 6)

You are a Dynamics 365 Finance system administrator.

Account managers need to use workspaces to monitor key pieces of data for customers and to navigate to forms for further actions.

You need to include workspace elements to achieve these needs.

Which design element should you use? To answer, select the appropriate configuration in the answer area.

NOTE: Each correct selection is worth one point.

#### Task

#### Presentation

View the number of sales orders that took place within the past seven days for a specific group of customers.

▼
Tiles
Links
Favorites
FactBoxes

Provide direct access to forms commonly used by workspace users.

▼
Charts
Links
Favorites
FactBoxes

- A. Mastered  
B. Not Mastered

Answer: A

Explanation:

#### Task

#### Presentation

View the number of sales orders that took place within the past seven days for a specific group of customers.

▼
Tiles
Links
Favorites
FactBoxes

Provide direct access to forms commonly used by workspace users.

▼
Charts
Links
Favorites
FactBoxes

#### NEW QUESTION 40

HOTSPOT - (Topic 6)

You are a Dynamics 365 Finance system administrator.

Data must be filtered based on given criteria to help users quickly reduce the number of records.

You need to identify the appropriate syntax to solve user requirements.

Which query filter syntax should you use? To answer, select the appropriate options in the answer area.  
NOTE: Each correct selection is worth one point.

Filter requirements

Today's date in a date field

Customers with the names Tina and Tyna

Syntax

D

Day(1)

T

Today

T?na

T!na

T..na

- A. Mastered
- B. Not Mastered

Answer: A

Explanation:  
References:  
<https://docs.microsoft.com/en-us/dynamics365/fin-ops-core/fin-ops/get-started/advanced-filtering-query-options>

NEW QUESTION 43

DRAG DROP - (Topic 6)

You are the project owner in a Lifecycle Services (LCS) project to deploy a Dynamics 365 for Finance and Operations environment. The system must be configured to enable testers to record processes that become business processes and test plans. You need to configure the system to generate User Acceptance Testing (UAT) test plans. In which order should you perform the actions? To answer, move all actions from the list of actions to the answer area and arrange them in the correct order.

Actions

Create business process libraries in the LCS project.

Enable Azure DevOps sync.

Configure Azure DevOps for the LCS project.

Configure system administrator help parameters to the LCS project.

Enable Sync test cases.

Answer Area

- A. Mastered
- B. Not Mastered

Answer: A

Actions

Create business process libraries in the LCS project.

Enable Azure DevOps sync.

Configure Azure DevOps for the LCS project.

Configure system administrator help parameters to the LCS project.

Enable Sync test cases.

Answer Area

Create business process libraries in the LCS project.

Configure Azure DevOps for the LCS project.

Configure system administrator help parameters to the LCS project.

Enable Azure DevOps sync.

Enable Sync test cases.

NEW QUESTION 44

- (Topic 6)

You are a Dynamics 365 for Finance and Operations system administrator. You have production and testing environments. You move the workflow from the testing environment to the production environment. The workflow in the production environment is stuck in a wait state. You need to resolve the issue with the workflow in the production environment. What should you do?

- A. Set the workflow batch job to critical
- B. Set the workflow messaging batch job group
- C. Grant the user workflow permissions
- D. Set the workflow execution account in the workflow parameters

Answer: D

NEW QUESTION 45

HOTSPOT - (Topic 6)

You manage a Dynamics 365 for Finance and Operations environment.

In preparation for being migrated into a new environment, data packages are being numbered in alignment with the default numbering formats in Lifecycle Services. A package is named 03.01.002.

You need to identify what this package contains. To answer, select the appropriate option in the answer area.

NOTE: Each correct selection is worth one point.

Segment	Component
03	<div>The environment The module The data type The month</div>
01	<div>The module The month The sequence number The data type</div>
002	<div>The sequence number The data package version The data entity The data type reference</div>

- A. Mastered
- B. Not Mastered

Answer: A

Explanation:

Segment	Component
03	<div>The environment The module The data type The month</div>
01	<div>The module The month The sequence number The data type</div>
002	<div>The sequence number The data package version The data entity The data type reference</div>

NEW QUESTION 50

HOTSPOT - (Topic 6)

You are tasked with enhancing usability in the Dynamics 365 for Finance and Operations deployment for your organization.

Your organization is evaluating different approaches, including using workspaces. You need to identify the goals of using workspaces.

Which goals should you identify? To answer, select the appropriate options in the answer area.

NOTE: Each correct selection is worth one point.

Answer Area

Requirement	Functional use
Visibility	<div>Understand the current state of the light task activity to support informed decisions Display deep information supporting complex task execution</div>
Workspace definition	<div>An initial overview for a specific role to increase productivity A view of complex activities requiring interaction across different roles</div>

- A. Mastered
- B. Not Mastered

Answer: A

Explanation:

Answer Area

Requirement	Functional use
Visibility	<div>Understand the current state of the light task activity to support informed decisions Display deep information supporting complex task execution</div>
Workspace definition	<div>An initial overview for a specific role to increase productivity A view of complex activities requiring interaction across different roles</div>

NEW QUESTION 55



#### HOTSPOT - (Topic 6)

You are tasked with setting up Case management in the Dynamics 365 for Finance and Operations deployment for your organization.

Your organization must use cases to track defect and enhancement reports for products, so that engineers can improve products over time. Only appropriate employees within the organization should have access to cases and related information.

\* Call center employees create thousands of service cases and ensure that the proper resources are allocated for each service.

\* Service department employees fix cases created by the call center and create cases for defects and enhancement suggestions when they identify them.

\* Engineers review the cases from the service department while planning and designing the next version.

You need to configure the tool to enable tracking of service cases and product defects and enhancements.

Which Case management settings should you choose for each category or categories? To answer, select the appropriate options in the answer area.

NOTE: Each correct selection is worth one point.

Option	Value
Category to use.	<div>General and Production</div> <div>Service and Product change</div> <div></div>
Service department in which employees create cases.	<div>General</div> <div>Production</div> <div>Service</div> <div>Product change</div>
Call center in which employees create cases.	<div>General</div> <div>Production</div> <div>Service</div> <div>Product change</div>

- A. Mastered  
B. Not Mastered

**Answer:** A

**Explanation:**

Option	Value
Category to use.	<div>General and Production</div> <div>Service and Product change</div> <div></div>
Service department in which employees create cases.	<div>General</div> <div>Production</div> <div>Service</div> <div>Product change</div>
Call center in which employees create cases.	<div>General</div> <div>Production</div> <div>Service</div> <div>Product change</div>

#### NEW QUESTION 57

##### HOTSPOT - (Topic 6)

You are a project manager using Dynamics 365 for Finance and Operations Lifecycle Services (LCS).

You must be able to identify and publish gaps within your normal delivery schedule.

You need to determine whether your organization has the minimum requirements in place to use Business Process Modeler (BPM).

Which prerequisites are required to use Business Process Modeler? To answer, select the appropriate options in the answer area.

NOTE: Each correct selection is worth one point.

Applications	Prerequisite
Choose the BPM prerequisites	<div></div> <div>Microsoft Azure DevOps</div> <div>Dynamics 365 Voice of the Customer</div> <div>Dynamics 365 Project Service Automation</div>
Use the BPM-compatible application to generate documentation for business processes	<div></div> <div>Microsoft Word</div> <div>Microsoft Excel</div> <div>Microsoft Visio</div> <div>Microsoft Azure DevOps</div>
Open business process diagrams with this BPM-compatible application	<div></div> <div>Microsoft Word</div> <div>Microsoft Excel</div> <div>Microsoft Visio</div> <div>Microsoft Azure DevOps</div>

- A. Mastered  
B. Not Mastered

**Answer:** A

**Explanation:**

References:

<https://docs.microsoft.com/en-us/dynamics365/unified-operations/dev-itpro/lifecycle-services/bpm-overview>

#### NEW QUESTION 60

- (Topic 6)

A company plans to implement Dynamics 365 Supply Chain Management in the next twelve months.

The IT manager is planning user testing. The manager needs to ensure that only the core configurations exist. Transactions will be added with a subsequent upload of master data for additional testing.

You need to identify how to ensure only the core configurations exist in the testing environment.

What should you do?

- A. Delete transactions in the production environment.
- B. Copy configurations from Azure Data Lake.
- C. Copy configurations from Lifecycle Services.
- D. Copy configurations from the golden configuration environment.

**Answer:** D

#### NEW QUESTION 61

- (Topic 6)

A company implements Dynamics 365 Finance.

New system users need to import journals. Journal data must be validated before it is imported into Dynamics 365 Finance.

You need to import the journal data. What should you use?

- A. Microsoft Dataverse
- B. Excel add-in
- C. Periodic journal
- D. General processing workspace

**Answer:** D

#### NEW QUESTION 66

SIMULATION - (Topic 6)

You are a functional consultant for Contoso Entertainment System USA (USMF).

You need to modify which default webpage is displayed when you access the system so that the Employee Self Service Portal is displayed by default.

To complete this task, sign in to the Dynamics 365 portal.

- A. Mastered
- B. Not Mastered

**Answer:** A

#### Explanation:

? Click the Settings icon in the upper right corner, then click Personalization Settings to open the Set Personal Options page.

? On the General tab, under Select your home page and setting for Get Started

paned, configure the Default Pane to be the Employee Self Service Portal.

#### NEW QUESTION 67

DRAG DROP - (Topic 6)

You design flow control for a complex expense workflow.

The workflow must run the approval process for expense reports simultaneously.

If an expense report is for an amount more than \$1,000, a supervisor must approve the expense report.

You need to design the workflow.

Which flow control elements should you use? To answer, drag the appropriate flow control shapes to the correct requirements. Each flow control shape may be used once, more than once, or not at all. You may need to drag the split bar between panes or scroll to view content.

NOTE: Each correct selection is worth one point.

Flow control shapes	Answer Area						
<div>Conditional decision</div> <div>Manual decision</div> <div>Parallel activity</div> <div>Subworkflow</div>	<table border="1"><thead><tr><th>Requirement</th><th>Flow control shape</th></tr></thead><tbody><tr><td>Run several processes simultaneously.</td><td><div>Flow control shape</div></td></tr><tr><td>Evaluate total amount for expense report.</td><td><div>Flow control shape</div></td></tr></tbody></table>	Requirement	Flow control shape	Run several processes simultaneously.	<div>Flow control shape</div>	Evaluate total amount for expense report.	<div>Flow control shape</div>
Requirement	Flow control shape						
Run several processes simultaneously.	<div>Flow control shape</div>						
Evaluate total amount for expense report.	<div>Flow control shape</div>						

- A. Mastered
- B. Not Mastered

**Answer:** A

#### Explanation:

Flow control shapes	Answer Area						
<div>Conditional decision</div> <div>Manual decision</div> <div>Parallel activity</div> <div>Subworkflow</div>	<table border="1"><thead><tr><th>Requirement</th><th>Flow control shape</th></tr></thead><tbody><tr><td>Run several processes simultaneously.</td><td><div>Parallel activity</div></td></tr><tr><td>Evaluate total amount for expense report.</td><td><div>Manual decision</div></td></tr></tbody></table>	Requirement	Flow control shape	Run several processes simultaneously.	<div>Parallel activity</div>	Evaluate total amount for expense report.	<div>Manual decision</div>
Requirement	Flow control shape						
Run several processes simultaneously.	<div>Parallel activity</div>						
Evaluate total amount for expense report.	<div>Manual decision</div>						

#### NEW QUESTION 68



HOTSPOT - (Topic 6)

You implement Dynamic 365 Finance. All financial records are stored in QuickBooks 2003 Pro. You need to import the financial records into Dynamics 365 Finance by using the data management framework. Which file format should you use? To answer, select the appropriate options in the answer area.  
NOTE: Each correct selection is worth one point.

Answer Area

Data type	File format
Entity	<div>Tab-delimited Excel file</div> <div>JSON file</div> <div>SACPAS file</div>
Data package	<div>ZIP file</div> <div>GZ file</div> <div>RAR file</div> <div>TAR file</div>

- A. Mastered
- B. Not Mastered

Answer: A

Explanation:

Box 1: Tab-delimited Excel file  
If you want to migrate data from other finance solutions, you must either check if an extension is available for that solution or import from Excel.  
Box 2: ZIP file  
Supported import file formats include .csv, .zip, .txt, .xml, and .xlsx.

NEW QUESTION 69

- (Topic 6)  
A system administrator has limited security rights in a Dynamics 365 for Finance and Operations environment that has multiple legal entities. You have a service-level agreement (SLA) of 30 minutes for support requests. The organizational administrator set up the printers for the organization. A printer fails. The system administrator deletes the printer instance. Sensitive print jobs remain in the printer queue and must be purged. Existing permissions do not allow the system administrator to purge the print queue because the printer is attached to multiple legal entities. You need to purge the documents from the print queue. What should you do?

- A. Wait for the organizational administrator to return to purge the documents.\_
- B. Use the system administration utility to purge the documents.
- C. Use an account with administrative permissions on the network printer to purge the queue.
- D. Contact Microsoft technical support-

Answer: C

NEW QUESTION 72

DRAG DROP - (Topic 6)  
You are implementing Dynamics 365 Finance. You need to perform testing. What tools should you use? To answer, drag the appropriate test tools to the correct requirements. Each test tool may be used once, more than once, or not at all. You may need to drag the split bar between panes or scroll to view content.  
NOTE: Each correct selection is worth one point.

Test tools	Requirement	Test tool
Build Machine	Author unit tests.	
RSAT	Author component tests.	
SysTest Framework	Run load testing.	
PerfSDK	Perform regression tools.	

- A. Mastered
- B. Not Mastered

Answer: A

Explanation:

Test tools	Requirement	Test tool
Build Machine	Author unit tests.	SysTest Framework
RSAT	Author component tests.	SysTest Framework
SysTest Framework	Run load testing.	PerfSDK
PerfSDK	Perform regression tools.	RSAT

#### NEW QUESTION 77

SIMULATION - (Topic 6)

A user named Karl recently moved to France and will begin working at Contoso Consulting FR (FRSI).

You need to ensure that the default legal entity for Karl is set to FRSI. The solution must ensure that the default date, time, and number format for Karl is set to French.

To complete this task, sign in to the Dynamics 365 portal.

- A. Mastered
- B. Not Mastered

**Answer:** A

#### Explanation:

- ? Navigate to System Administration > Users > Users.
- ? Select Karl's user account.
- ? Click User Options.
- ? Go to the Preferences tab.
- ? In the Company field, select Contoso Consulting FR (FRSI).
- ? In the Date, time and number format field, select French.
- ? Click Save to save the changes.

#### NEW QUESTION 81

- (Topic 6)

A company implements Dynamics 365 Finance

The company plans to implement the Regression Suite Automation Tool (RSAT) to assist with their automated testing. The company creates test scripts and must store the scripts in a location that is accessible by RSAT.

You need to configure RSAT.

Where should you upload the test scripts?

- A. Microsoft SharePoint
- B. Microsoft Azure DevOps
- C. Document Management
- D. Common Data Service

**Answer:** B

#### Explanation:

Reference:

<https://docs.microsoft.com/en-us/dynamics365/fin-ops-core/dev-itpro/perf-test/rsat/rsat-overview#rsat-user-interface-overview>

#### NEW QUESTION 86

- (Topic 6)

A company plans to create a global address book and additional address books for each line of business. You need to help add parties to the address books.

What party types can you use for both the global address book and the additional address books? NOTE: Each correct selection is worth one point.

- A. Customer
- B. Vendor
- C. Person
- D. Competitor
- E. Organization

**Answer:** CE

#### Explanation:

<https://docs.microsoft.com/en-sg/dynamics365/unified-operations/fin-and-ops/organization-administration/overview-global-address-book?toc=%2Fdynamics365%2Funified-operations%2Ftalent%2Ftoc.json>

#### NEW QUESTION 90

DRAG DROP - (Topic 6)

An organization implements Dynamics 365 for Finance and Operations. You need to determine where work items originate. From which module do the following work items originate? To answer, drag the appropriate modules to the correct work items. Each module may be used once, more than once, or not at all. You may need to drag the split bar between panes or scroll to view content.

NOTE: Each correct selection is worth one point.

Modules

Accounts payable

Accounts receivable

Inventory management

Credit and collections

Answer Area

Work item

Purchase order

Invoice

Vendor invoice

Transfer order

Module

Module

Module

Module

- A. Mastered
- B. Not Mastered

Answer: A

Explanation:

Modules

Accounts payable

Accounts receivable

Inventory management

Credit and collections

Answer Area

Work item

Purchase order

Invoice

Vendor invoice

Transfer order

Module

Accounts payable

Accounts receivable

Accounts payable

Inventory management

NEW QUESTION 95

HOTSPOT - (Topic 6)

You are implementing Dynamites 365 Supply Chain Management. You use the Regression Suite Automation Tool (RSAT) to test the solution. You are planning to create the following test cases:

- Create a new purchase order
- Receipt the purchase order.

You need to complete the configuration to chain the test cases together. How should you compete the configuration? To answer, select the appropriate configuration in the answer area.

NOTE: Each correct selection is worth one point.

Requirement

Create a variable for the purchase order number when creating the first task recording.

Action

Use the Copy option.

Use the Validate option.

Add a developer placeholder.

Add an info step.

Requirement

Configure the second task recording to use the variable.

Action

Replace the hardcoded value with the variable name.

Create a derived test case.

Add a message validation using the variable name.

Enable Use operators for validation.

- A. Mastered
- B. Not Mastered

Answer: A

Explanation:

Box 1: Use the Copy option

Copy variables to chain test cases

One of the key features of the Regression Suite Automation Tool is the chaining of test cases, that is, the ability of a test to pass values to other tests. Test cases are executed according to their defined order in the Azure DevOps test plan, which can also be updated in the test tool itself. It is important to correctly order the tests if you want to pass variables from one test case to the other.

To save the value of a variable while recording the test in Task Recorder, right-click the field and select Task recorder > Copy, as shown in the following image. Copying will save the variable in the recording file. This variable can be used in subsequent tests.

Cave Wholesales	Returned order	Open order	Admin
Contoso Retail Los Angeles	Returned order	Open order	Admin
Contoso Retail San Diego	Returned order	Open order	Admin
Contoso Retail San Diego	Sales order	Delivered	CHARLIE
Forest Wholesales	Sales order	Open order	ToddM

Form information

Personalize: Order type

Export all rows

Export marked rows

View shortcuts

Task recorder

Copy

Copy

Paste

Validate

Add info step

name	Source code	Pr...	Quantity	unit	N
o Retail San Diego			3.00	1.00	

Box 2: Create a derived test case Derived test cases

The Regression suite automation tool (RSAT) lets you use the same task recording with multiple test cases, so that you can run a task with different data configurations. Select a test case in the Regression suite automation tool and then select New > Create Derived Test Case. This creates a child test case in Azure DevOps. The resulting derived test case is linked to its parent test case in Azure DevOps. It has an Excel parameters file attached but no recording file. The derived test case will appear in the Regression suite automation tool grid under the same test suite with the Derived column selected. By default, derived test cases are named after their parent test case with a numeric suffix.

NEW QUESTION 98

- (Topic 6)

A company implements Dynamics 365 Finance.

The implementation team must build acceptance scripts to make sure that common business use cases can be performed in the new system. They must test use cases by stepping through required tasks, organized by functional hierarchy.

You need to create User Acceptance Testing (UAT) tests in Lifecycle Services (LCS) that can be easily repeatable.

What should you use?

- A. Data management tool
- B. APQC Unified Library
- C. Business process modeler (BPM) synced with Microsoft Azure DevOps
- D. Configuration data manager

Answer: C

Explanation:

Reference:

<https://docs.microsoft.com/en-us/dynamics365/fin-ops-core/dev-itpro/lifecycle-services/using-task-guides-and-bpm-to-create-user-acceptance-tests>

NEW QUESTION 100

- (Topic 6)

Note: This question is part of a series of questions that present the same scenario. Each question in the series contains a unique solution. Determine whether the solution meets the stated goals. Some question sets might have more than one correct solution, while others might not have a correct solution.

After you answer a question in this section, you will NOT be able to return to it. As a result, these questions will not appear in the review screen.

You are a Dynamics 365 Finance sales manager. You use a Power BI dashboard that shows near-real-time sales data from reports and tiles.

It is impractical to keep switching between multiple applications.

You need to configure a way to access the Power BI reports within the Dynamics 365 Finance client.

Solution: Import the Power BI reports through Lifecycle Services and pin it to your workspace.

Does the solution meet the goal?

- A. Yes
- B. No

Answer: B

Explanation:

Reference:

<https://docs.microsoft.com/en-us/dynamics365/fin-ops-core/dev-itpro/analytics/pin-power-bi-reports>

NEW QUESTION 104

HOTSPOT - (Topic 6)

A company plans to use Dynamics 365 Finance. You need to implement the security architecture.

Which component should you use for each requirement? To answer, select the appropriate security component in the answer area.

NOTE: Each correct selection is worth one point.



Answer Area

Requirement	Security component
Group the security configuration for employees with the same job function.	Security roles Duties Privileges Permissions
Assign check-depositing tasks to a group of people as part of the accounts receivable process.	Security roles Duties Privileges Permissions
Restrict access to a specific table or chart.	Security roles Duties Privileges Permissions

- A. Mastered  
B. Not Mastered

Answer: A

Explanation:

Answer Area

Requirement	Security component
Group the security configuration for employees with the same job function.	Security roles Duties Privileges Permissions
Assign check-depositing tasks to a group of people as part of the accounts receivable process.	Security roles Duties Privileges Permissions
Restrict access to a specific table or chart.	Security roles Duties Privileges Permissions

NEW QUESTION 105

DRAG DROP - (Topic 6)

A company named Company A is implementing Dynamics 365 Finance. The company is migrating organizational structure data from an older system. CompanyA has a wholly-owned subsidiary named CompanyB that reports its own financials. CompanyA and CompanyB transact with each other. The companies have three regional offices that are individual cost centers. You need to configure the organization. What should you use? To answer, drag the appropriate functionalities to the correct requirements. Each functionality may be used once, more than once, or not at all. You may need to drag the split bar between panes or scroll to view content. NOTE: Each correct selection is worth one point.

Functionalities	Requirement	Functionality
Legal entity	Set up financials for CompanyB.	
Financial dimension	Set up for regional offices.	
Financial dimension set		
Consolidation legal entity		

Answer:

Functionalities	Requirement	Functionality
Legal entity	Set up financials for CompanyB.	Legal entity
Financial dimension	Set up for regional offices.	Financial dimension set
Financial dimension set		
Consolidation legal entity		

- A. Mastered  
B. Not Mastered

Answer: A

NEW QUESTION 110

- (Topic 6)

Note: This question is part of a series of questions that present the same scenario. Each question in the series contains a unique solution that might meet the stated goals. Some question sets might have more than one correct solution, while others might not have a correct solution. After you answer a question in this section, you will NOT be able to return to it. As a result, these questions will not appear in the review screen. You are a Dynamics 365 Finance system administrator. Users report that purchase order numbers are being generated in a non-continuous configuration during bulk purchase order creation. You need to determine how to improve performance. Solution: Change the number sequence to a continuous number sequence. Does the solution meet the goal?

- A. Yes  
B. No

Answer: B



**Explanation:**

Reference:

<https://dynamics-tips.com/number-sequences-explained-d365-finance-and-operations/>

**NEW QUESTION 114**

DRAG DROP - (Topic 6)

A company is migrating to Dynamics 365 for Finance and Operations from a legacy system. The company is creating new questionnaires for customers.

When the survey responses come in, the company wants to provide ratings as a foundation for a further discussion.

You set up questionnaire types, question types, and questionnaire parameters. You need to design the questionnaire.

In which order should you perform the actions? To answer, move all actions to the answer area and arrange them in the correct order.

Actions	Answer Area
Attach questions to the questionnaire	
Set up the questionnaire	
Set up questions and their association	
Set up answer groups and answers	

Navigation arrows: Left arrow (←) and Right arrow (→)

A. Mastered

B. Not Mastered

**Answer:** A

**Explanation:**

References:

<https://docs.microsoft.com/en-us/dynamics365/unified-operations/talent/design- questionnaires>

**NEW QUESTION 116**

SIMULATION - (Topic 6)

A company named Fabrikam, Inc. plans to open an office in the United Kingdom.

You need to create a new legal entity named Fabrikam that uses a company code of FABR.

To complete this task, sign in to the Dynamics 365 portal.

A. Mastered

B. Not Mastered

**Answer:** A

**Explanation:**

? Go to Navigation pane > Modules > Organization administration > Organizations > Legal entities.

? Click New.

? In the Name field, type Fabrikam.

? In the Company field, type FABR.

? In the Country/region field, enter or select a value.

? Click OK.

**NEW QUESTION 121**

- (Topic 6)

Note: This question is part of a series of questions that present the same scenario. Each question in the series contains a unique solution that might meet the stated goals. Some question sets might have more than one correct solution, while others might not have a correct solution.

After you answer a question in this section, you will NOT be able to return to it. As a result, these questions will not appear in the review screen.

You are a functional consultant who is deploying Dynamics 365 for Finance and Operations.

The implementation must:

? Use an iterative approach

? Integrate with real-world data

? Enforce standards and governance

? Implement multiple rounds of feedback

You need to deploy and validate the implementation.

Solution: Deploy the out-of-the-box solution. Enable users to customize the solution based on individual user scenarios.

Does the solution meet the goal?

A. Yes

B. No

**Answer:** B

**NEW QUESTION 125**

SIMULATION - (Topic 6)

You are a functional consultant for Contoso Entertainment System USA (USMF).

You need to assign the Purchasing agent security role to Wayne Samuel Jorden for USMF only.

To complete this task, sign in to the Dynamics 365 portal.

- A. Mastered
- B. Not Mastered

Answer: A

Explanation:

- ? Navigate to System administration > Security > Assign users to roles
- ? Select the Purchasing Agent role.
- ? Click the Manually assign / exclude users button
- ? Select the Wayne Samuel Jordan user account and click the Assign to role button.
- ? Click the Assign organizations button
- ? Select the Grant access to specific organizations option
- ? Select the USMF legal entity and click the Grant button.

NEW QUESTION 128

DRAG DROP - (Topic 6)

A company needs to set up its printers to work with Dynamics 365 for Finance and Operations. You need to set up the printers for network printing from the Dynamics 365 client browser. Which three actions should be performed in order? To answer, move all actions from the

list of actions to the answer area and arrange them in the correct order.

Actions

Activate the network printers

Install and configure a document routing agent

Set up the network printer and assign a static IP

Register network printers in Finance and Operations

Answer Area

⏪

⏩

- A. Mastered
- B. Not Mastered

Answer: A

Explanation:

References:  
<https://docs.microsoft.com/en-us/dynamics365/unified-operations/dev-itpro/analytics/install-document-routing-agent>

NEW QUESTION 133

HOTSPOT - (Topic 6)

An existing Dynamics 365 Finance and Dynamics 365 Supply Chain Management implementation accepts invoices from parts suppliers. A custom workflow runs when parts are received. The workflow updates inventory for all production lines. Suppliers request access to failure rate data for the parts they supply in real time. The data requested must include the part number and the date the parts were received. Part failure rate data must be uploaded to a OneDrive for Business folder for each parts supplier. You need to implement a solution. Which technology should you use? To answer, select the appropriate options in the answer area. NOTE: Each correct selection is worth one point.

Requirement

Initiate a process in real time

Gather failure rate data

Post data to supplier’s OneDrive

Technology

Workflow business events

Dynamics 365 Finance batch jobs

Azure Batch

Azure WebJob

Dynamics 365 Finance Microsoft Power Platform

Dynamics 365 SDK

Azure SDK

Power Automate flow

Dynamics 365 Finance workflow

Business process flow

Azure Service Bus

- A. Mastered
- B. Not Mastered

**Answer:** A

**Explanation:**

Requirement	Technology
Initiate a process in real time	<div>▼</div> <div>Workflow business events</div> <div>Dynamics 365 Finance batch jobs</div> <div>Azure Batch</div> <div>Azure WebJob</div>
Gather failure rate data	<div>▼</div> <div>Dynamics 365 Finance Microsoft Power Platform</div> <div>Dynamics 365 SDK</div> <div>Azure SDK</div>
Post data to supplier's OneDrive	<div>▼</div> <div>Power Automate flow</div> <div>Dynamics 365 Finance workflow</div> <div>Business process flow</div> <div>Azure Service Bus</div>

#### NEW QUESTION 135

- (Topic 6)

A company is implementing Dynamics 365 Finance and Dynamics 365 Supply Chain Management. A proprietary reporting solution is used across multiple enterprise resource planning (ERP) applications and is the primary reporting engine for the company.

Several key entities must be synchronized to a reporting database and aggregated with other ERP systems. The reporting database must be accessed by using Microsoft Transact-SQL (T-SQL).

You need to implement the Dynamics 365 Finance and Dynamics 365 Supply Chain Management feature.

Which feature should you use?

- A. Dual-write
- B. Finance and Operations Connector
- C. Bring your own database (BYOD)
- D. Data task automation

**Answer:** C

#### NEW QUESTION 138

- (Topic 6)

Note: This question is part of a series of questions that present the same scenario. Each question in the series contains a unique solution that might meet the stated goals. Some question sets might have more than one correct solution, while others might not have a correct solution.

After you answer a question in this section, you will NOT be able to return to it. As a result, these questions will not appear in the review screen.

You are developing a file-based integration to Dynamics 365 for Finance and Operations.

Microsoft Excel files with 15,000 or more records need to be imported into the system periodically by individual users. The records need to be imported in full within a 5-minute approved window.

You need to determine how to accomplish the import into the system. Solution: Import the data by using the recurring data integrations API. Does the solution meet the goal?

- A. Yes
- B. No

**Answer:** A

**Explanation:**

References:

<https://docs.microsoft.com/en-us/dynamics365/fin-ops-core/dev-itpro/data-entities/integration-overview>

<https://docs.microsoft.com/en-us/dynamics365/fin-ops-core/dev-itpro/data-entities/data-management-api>

#### NEW QUESTION 140

HOTSPOT - (Topic 6)

You finalize customizations to a deployment by using Dynamics 365 Commerce.

The deployment is global and requires support of multiple languages. You engage with Microsoft FastTrack. The Microsoft FastTrack engineer requires you to share the languages for the deployment.

You need to provide the language data to the engineer by using asset libraries.

How should you configure the asset libraries? To answer, select the appropriate options in the answer area.

NOTE: Each correct selection is worth one point.



## Answer Area

### Asset library option

Asset library type

Configuration
<div><div></div><div></div></div>
Shared
Project level

Asset type

<div><div></div><div></div></div>
Software deployable package
GER configuration
Dynamics 365 Retail SDK
Database backup

Asset scope

<div><div></div><div></div></div>
Me
Project
Organization

- A. Mastered  
B. Not Mastered

**Answer:** A

### Explanation:

<https://learn.microsoft.com/en-us/dynamics365/fin-ops-core/dev-itpro/lifecycle-services/asset-library>

## NEW QUESTION 145

HOTSPOT - (Topic 6)

A company has complex security requirements. You are asked to set up security access for users.

You need to identify the main attributes for security role, duty, privilege, and permissions. Which of the following attributes does each of the security components have? To answer,

select the appropriate options in the answer area.

NOTE: Each correct selection is worth one point.

### Security component

### Attributes

Security role

<div><div></div><div></div></div>
Can be automatically assigned to users through batch jobs
Is assessed through entry points
Corresponds to parts of a business process and can be segregated
Specifies the level of access to perform a job or solve a problem

Duty

<div><div></div><div></div></div>
Can be automatically assigned to users through batch jobs
Is assessed through entry points
Corresponds to parts of a business process and can be segregated
Specifies the level of access to perform a job or solve a problem

Privilege

<div><div></div><div></div></div>
Can be automatically assigned to users through batch jobs
Is assessed through entry points
Corresponds to parts of a business process and can be segregated
Specifies the level of access to perform a job or solve a problem

Permissions

<div><div></div><div></div></div>
Can be automatically assigned to users through batch jobs
Is assessed through entry points
Corresponds to parts of a business process and can be segregated
Specifies the level of access to perform a job or solve a problem

- A. Mastered  
B. Not Mastered

**Answer:** A

**Explanation:**

References:

<https://docs.microsoft.com/en-us/dynamics365/unified-operations/dev-itpro/sysadmin/role-based-security>

**NEW QUESTION 146**

- (Topic 6)

You implement Dynamic 365 Finance.

You must post a message to a Microsoft teams channel each time a write-off amount is over \$1,000 USD.

You need to determine which tools to use.

Which two tools should you use? Each correct answer presents part of the solution. NOTE: Each correct selection is worth one point.

- A. Power Apps
- B. Business Events
- C. Dynamics 365 Finance workflow
- D. Power Automate

**Answer:** AD

**NEW QUESTION 149**

HOTSPOT - (Topic 6)

You are a system administrator of an Azure-based Dynamics 365 for Finance and Operations instance.

Your company is using a single master configuration environment to refresh a test environment during implementation. You need to perform refreshes several times and make sure they are done successfully.

You need to automate the data migration and leverage the data task automation tool. Which objects should you use for each scenario? To answer, select the appropriate options

in the answer area.

NOTE: Each correct selection is worth one point.

Scenario	Object
Data packages need to be used in automated testing. Where are they stored?	<div><div></div><div><div>File imports</div><div>Data tasks</div><div>Data projects</div><div>Data entities</div></div></div>
You need to add a new task in the automation steps. Where do you add it?	<div><div></div><div><div>XML manifests</div><div>Lifecycle Services projects</div><div>Data task automation manager</div><div>Data projects</div></div></div>
There were errors that need to be viewed. Where can you view them?	<div><div></div><div><div>Data task automation manager</div><div>Data validation project page</div><div>Data validation checklist workspace</div><div>Lifecycle Services project</div></div></div>

- A. Mastered
- B. Not Mastered

**Answer:** A

**Explanation:**



### Scenario

Data packages need to be used in automated testing. Where are they stored?

You need to add a new task in the automation steps. Where do you add it?

There were errors that need to be viewed. Where can you view them?

### Object

▼

File imports

Data tasks

Data projects

Data entities

▼

XML manifests

Lifecycle Services projects

Data task automation manager

Data projects

▼

Data task automation manager

Data validation project page

Data validation checklist workspace

Lifecycle Services project

#### NEW QUESTION 150

FILL IN THE BLANK - (Topic 6)

Note: This question is part of a series of questions that present the same scenario. Each question in the series contains a unique solution. Determine whether the solution meets the stated goals. Some question sets might have more than one correct solution, while others might not have a correct solution.

After you answer a question in this section, you will NOT be able to return to it. As a result, these questions will not appear in the review screen.

A company is implementing Dynamics 365 Finance. The company has two legal entities in two different regions requiring separate tenants. CompanyA and CompanyB are both implementing Dynamics 365 Finance as separate implementation teams in a staggered approach.

CompanyA and CompanyB want to ensure that assets are accessible across the companies and to Microsoft but will not be publicly accessible to other companies.

You need to determine how to set up and configure assets to the Lifecycle Services (LCS) Asset library.

Solution: Upload assets with a global scope. Does the solution meet the goal?

- A. YES
- B. No

**Answer: B**

#### NEW QUESTION 154

- (Topic 5)

You need to configure the customer service representative's screen to meet the requirements.

Which three features must be configured? Each correct answer presents part of the solution.

NOTE: Each correct selection is worth one point.

- A. Funnel
- B. Favorites
- C. Charts
- D. Workspaces
- E. Security

**Answer: ACE**

#### NEW QUESTION 159

DRAG DROP - (Topic 6)

You are importing from a third-party e-commerce system into Dynamics 365 Finance. The Sales Tax Code Groups data package is configured as follows:

Entity	Execution unit	Level in execution unit	Sequence in level
Sales tax code names	1	1	1
Sales tax code values	1	1	2
Sales tax code limits	1	1	4
Sales tax exempt numbers	2	1	2
Sales tax reporting codes	3	1	1

You start the import process.

You need to determine when each entity will start to import.

What will the system do? To answer, drag the start imports to the appropriate entity. Each start import may be used once, more than once, or not at all. You may need to drag the split bar between panes or scroll to view content.

NOTE: Each correct selection is worth one point.

Start imports	Entity	Start import
Immediately	Sales tax code names	
After Sales tax code names	Sales tax code values	
After Sales tax code values	Sales tax code limits	
After Sales tax limits	Sales tax exempt numbers	
After Sales tax exempt numbers	Sales tax reporting codes	

- A. Mastered  
B. Not Mastered

Answer: A

Explanation:

Start imports	Entity	Start import
Immediately	Sales tax code names	Immediately
After Sales tax code names	Sales tax code values	After Sales tax code names
After Sales tax code values	Sales tax code limits	After Sales tax code values
After Sales tax limits	Sales tax exempt numbers	After Sales tax limits
After Sales tax exempt numbers	Sales tax reporting codes	After Sales tax exempt numbers

**NEW QUESTION 164**

SIMULATION - (Topic 6)

You are a functional consultant for Contoso Entertainment System USA (USMF).

You need to create a new number sequence named seq that meets the following requirements:

- ? Begins with the number 1
- ? Uses continuous numbers
- ? Uses a format of seq#####

To complete this task, sign in to the Dynamics 365 portal.

- A. Mastered  
B. Not Mastered

Answer: A

Explanation:

- ? Go to Navigation pane > Modules > Organization administration > Number sequences > Number sequences.
- ? Select Number sequence.
- ? In the Number sequence code field, type seq.
- ? In the Name field, type a value.
- ? In the Segments section, click Add.
- ? Select Constant and enter a value of seq
- ? Click Add again.
- ? Select Alphanumeric and enter a value of #####
- ? In the General section, ensure that Continuous is set to Yes.
- ? Under Number Allocation, enter 1 in the Smallest field.
- ? Click Save to save the number sequence.

**NEW QUESTION 169**

- (Topic 6)

A parts suppliers provides several terabytes of data that must be imported into Dynamics 365 Finance in bulk.

Data operations must provide for insert operations and be asynchronous. You need to implement a data access technology.

Which data access technology should you use?

- A. AJAX  
B. Data management framework  
C. Dual-write  
D. OData APIs

Answer: B

**NEW QUESTION 172**

- (Topic 6)  
Your company attends a conference where many part suppliers will be in attendance. Your supplier relations executives meet with suppliers to discuss contracts with your company at the conference.  
You are building a mobile app to support the discussions. The mobile app must access multiple data entities within Dynamics 365 Finance. Data operations must be synchronous and provide minor updates to existing information.  
You need to implement a data access technology. Which data access technology should you use?

- A. Business events
- B. ODataAPIs
- C. ADO.NET
- D. Data management framework

Answer: B

Explanation:  
Reference: <https://docs.microsoft.com/en-us/dynamics365/fin-ops-core/dev-itpro/data-entities/data-entities>

NEW QUESTION 175

DRAG DROP - (Topic 6)  
Your company is using a highly customized version of Dynamics 365 for Finance and Operations.  
You have identified a new hotfix that will correct several important issues that have caused many user complaints.  
You need to determine whether the hotfix will break any customizations.  
Which four actions should you perform in sequence? To answer, move the appropriate actions from the list of actions to the answer area and arrange them in the correct order.

Actions

Upload the hotfix to Lifecycle Services

Download the hotfix from Lifecycle Services

Check in the entire hotfix as pending change and schedule and deploy it to the production environment

Build the hotfix in the development environment and accept changes

Install the hotfix in your Microsoft Azure DevOps application development environment in an Active state

Install the hotfix in your Microsoft Azure DevOps application development environment in a Pending state

Answer Area

⏪

⏩

- A. Mastered
- B. Not Mastered

Answer: A

Explanation:  
References:  
<https://docs.microsoft.com/en-us/dynamics365/unified-operations/dev-itpro/migration-upgrade/install-metadata-hotfix-package>

NEW QUESTION 179

DRAG DROP - (Topic 6)  
DRAG DROP  
You are configuring a sales order workflow in Dynamics 365 Supply Chain Management. An application stores the priority status value. The application is not integrated with Dynamics 365 Supply Chain Management.  
You need to select the element type to use in the workflow.  
Which element type should you use? To answer, drag the appropriate element type to the correct element. Each element type may be used once, more than once, or not at all. You may need to drag the split bar between panes or scroll to view content.  
NOTE: Each correct selection is worth one point.

Element types	Element	Element Type
Manual Task	A user confirms if priority status is awarded, which will result in additional checks being skipped.	
Manual Decision	A credit check must be performed by the system.	
Automated Task	If the customer does not have a primary phone number, additional tasks must be performed.	
Conditional Decision		

- A. Mastered
- B. Not Mastered

Answer: A

Explanation:



Element types	Element	Element Type
Manual Task	A user confirms if priority status is awarded, which will result in additional checks being skipped.	Manual Decision
Manual Decision		
Automated Task	A credit check must be performed by the system.	Automated Task
Conditional Decision	If the customer does not have a primary phone number, additional tasks must be performed.	Conditional Decision

NEW QUESTION 183

- (Topic 6)

Note: This question is part of a series of questions that present the same scenario. Each question in the series contains a unique solution that might meet the stated goals. Some question sets might have more than one correct solution, while others might not have a correct solution.

After you answer a question in this section, you will NOT be able to return to it. As a result, these questions will not appear in the review screen.

You are a Dynamics 365 for Finance and Operations security administrator.

When testing security setups, users report that certain roles are gaining access to sensitive information via a form in the system.

You must investigate which user roles have what visibility and access level to system objects, and then send a report to the implementation team to address security compliance concerns.

You need to report the information from the system. Solution: Generate the User role assignments report. Does the solution meet the goal?

- A. Yes
- B. No

Answer: B

Explanation:

Reference:

<https://docs.microsoft.com/en-us/dynamics365/fin-ops-core/dev-itpro/sysadmin/security- reports>

NEW QUESTION 188

- (Topic 6)

You are a Dynamics 365 for Finance and Operations system administrator.

A user is reporting an issue with the Sales Order form. The UI for the form is not loading properly, and there are some performance issues. The object was working fine until the most recent update release. The who personalized this form is using Microsoft Edge. No other users are reporting issues.

You need to resolve the issue.

- A. Delete the sales from project in the usage data form.
- B. Export, delete, then reimport the usage data for the sales form object.
- C. Disable and then re-enable the user.
- D. Switch to Microsoft Edge instead of internet Explorer 11.

Answer: D

NEW QUESTION 191

HOTSPOT - (Topic 6)

You support custom functionality in Dynamics 365 Finance.

Your company requires that all solution be fully tested before they are deployed to production.

You need to use different testing types prior to deployment.

Which testing type should you use? To answer, select the appropriate options in the answer area

NOTE: Each correct selection is worm one point.

Answer Area

Requirement	Testing type
Isolate and test new features individually.	<div>Unit Regression Functional End to end</div>
Test whether new features break existing capabilities.	
Validate that multiple new features meet requirements.	
Test whether new features break existing capabilities.	<div>Unit Regression Functional End to end</div>
Validate that multiple new features meet requirements.	
Test all components of the solution together.	
Validate that multiple new features meet requirements.	<div>Unit Regression Functional End to end</div>
Test all components of the solution together.	
Validate that multiple new features meet requirements.	
Test all components of the solution together.	<div>Unit Regression Functional End to end</div>
Validate that multiple new features meet requirements.	
Test all components of the solution together.	

- A. Mastered
- B. Not Mastered

Answer: A

Explanation:

Answer Area

Requirement	Testing type
Isolate and test new features individually.	Unit
Test whether new features break existing capabilities.	Regression
Validate that multiple new features meet requirements.	Functional
Test whether new features break existing capabilities.	End to end
Validate that multiple new features meet requirements.	Unit
Test all components of the solution together.	Regression
Validate that multiple new features meet requirements.	Functional
Test all components of the solution together.	End to end
Validate that multiple new features meet requirements.	Unit
Test all components of the solution together.	Regression
	Functional
	End to end

### NEW QUESTION 193

- (Topic 6)

You set up Dynamics 365 for Finance and Operations. Your organization will use email with the application.

You need to ensure that email will be sent using typical secure settings. What setting must be set up as specified?

- A. Specify if SSL is required is selected.
- B. Information rights management is enabled.
- C. In-place hold and Litigation hold are enabled.
- D. In-place eDiscovery is enabled.

**Answer:** A

#### Explanation:

SMTP settings tab.

On the Email parameters page, note the following settings on the SMTP settings tab.

Server information

SSL required - Determines whether secure transport is used. Typically, this is Yes, except for internal or troubleshooting scenarios.

Etc.

Reference: <https://docs.microsoft.com/en-us/dynamics365/fin-ops-core/fin-ops/organization-administration/configure-email>

### NEW QUESTION 196

DRAG DROP - (Topic 6)

A company implements Dynamics 365 Finance. The company wants to automate some standard business practices and processes into the system.

A sales representative calls on a new customer and obtains an order. As part of the process, the representative must follow the standard procedure for onboarding a new customer by uploading the customer's credit application to the company OneDrive for processing, create the new customer record, set a default minimum credit limit, and enter the new order using the company's streamlined new-customer form.

After the credit application is approved by the finance manager, and the customer's credit limit is updated in the system, the order will be released for fulfilment.

You need to determine which tool or functionality best fits the scenario.

Which feature or functionality should you use? To answer, drag the appropriate setting to the correct drop targets. Each source may be used once, more than once, or not at all. You may need to drag the split bar between panes or scroll to view content.

NOTE: Each correct selection is worth one point.

Answer Area		
Features or functionalities	Scenario	Feature or functionality
Business process flow	Guide the salesperson through creating the new customer record and order.	
Workflow	Notify the finance manager of a new credit application by using email.	
Microsoft Flow	Automatically update the order status when the credit limit is updated.	
Task Guide		

- A. Mastered
- B. Not Mastered

**Answer:** A

#### Explanation:



Answer Area	
Features or functionalities	
Business process flow	
Workflow	
Microsoft Flow	
Task Guide	
	Scenario
	Guide the salesperson through creating the new customer record and order.
	Notify the finance manager of a new credit application by using email.
	Automatically update the order status when the credit limit is updated.
	Feature or functionality
	Task Guide
	Microsoft Flow
	Workflow

#### NEW QUESTION 201

- (Topic 6)

You are a Dynamics 365 Finance system administrator.

Use's report that purchase order numbers are being generated in a non-continuous configuration Outing bulk purchase order creation.

You need :o determine how to improve performance.

Solution: Run the automatic cleanup of number sequences job Does the solution meet the goal?

- A. Yes
- B. No

**Answer:** B

#### NEW QUESTION 202

- (Topic 6)

You implement Dynamics 36S Finance.

You must view the number of purchase order that were received and not invoiced. The view must automatically update.

You need to implement the view. What should you use?

- A. workspace tiles
- B. workspace lists
- C. reports
- D. alerts

**Answer:** A

#### Explanation:

Reference:

<https://dynamics-tips.com/workspaces-d365-finance-and-operations/>

#### NEW QUESTION 203

SIMULATION - (Topic 6)

You are a functional consultant for Contoso Entertainment System USA (USMF).

You need to modify the default print management setup for customer invoices to use the PDF format.

To complete this task, sign in to the Dynamics 365 portal.

- A. Mastered
- B. Not Mastered

**Answer:** A

#### Explanation:

? Go to Navigation pane > Modules > Accounts Receivable Setup > Forms > Form setup

? On the General tab, click the Print management button.

? In the documents list, expand Customer invoice and select Original <Default>.

? In the Destination field, select Printer setup.

? In the Print destination settings windows, select File.

? Select PDF for the File type.

? Click OK to save the changes.

#### NEW QUESTION 208

- (Topic 6)

You are implementing Dynamics 365 Supply Chain Management.

You must import data from a third-party system into Supply Chain Management. You need to import files by using the Data Management framework.

Which three files formats can you use? Each correct answer presents a complete solution. NOTE: Each correct selection is worth one point.

- A. .Zip
- B. .Clat
- C. .xml
- D. Microsoft Excel
- E. Pipe delimited

**Answer:** ACD

#### NEW QUESTION 213

- (Topic 6)

A company uses Dynamics 365 Finance.

User1 is an approver of expense reports. User1 will be on vacation next week.

You need to configure the system to assign a user named User2 temporary permissions to review and approve expense report submissions while User1 is on vacation.

What should you do?

- A. Assign User2 as the approver for expense reports using the workflow designer.
- B. Assign User2 the same user security roles as User1.
- C. Create a delegation rule for User1 for the duration of the vacation period.
- D. Create a delegation rule for User2 for the duration of the vacation period.

**Answer: C**

#### Explanation:

Reference:

<https://docs.microsoft.com/en-us/dynamics365/fin-ops-core/fin-ops/organization-administration/tasks/delegate-work-items-workflow>

#### NEW QUESTION 218

- (Topic 6)

You are implementing Dynamics 365 Supply Chain Management. You have a CSV file that contains two million records. You need to import the file into Dynamics 365 Supply Chain Management without manual manipulation of the data. What should you use?

- A. Microsoft Excel Add-In
- B. Microsoft SQL Server Integration Services
- C. Classic data integration
- D. Data management import job

**Answer: D**

#### NEW QUESTION 222

- (Topic 6)

You set up security roles for the users in a company. You must use standard security roles when possible. You need to identify the standard security roles.

Which of the following can you assign to a user as a standard security role?

- A. Leasing manager
- B. System engineer
- C. Business development manager
- D. Waterspider

**Answer: D**

#### NEW QUESTION 223

HOTSPOT - (Topic 6)

A company uses Dynamics 365 Finance.

You review business processes and their associated requirements. These work items include bugs, tasks backlog items, tests, and documents

You need to perform the following tasks:

- Track the progress of your implementation project and associate various work items with requirements and business processes
- Identify and publish bug fixes within your normal delivery schedule.

Which tools should you use? To answer, select the appropriate options in the answer aiea. NOTE Each correct selection is worth one point.

Requirements	Tools
Connect your business process maps to the recommended work management system.	<div><div></div><div>Business process modeler connected to Microsoft Azure DevOps</div><div>Microsoft Visio connected to Microsoft Project Server</div><div>Microsoft Visual Studio connected to Microsoft Github</div></div>
Create business process maps.	<div><div></div><div>Business process modeler</div><div>Microsoft Visual Studio</div><div>Microsoft Visio</div></div>
Manage progress and work items.	<div><div></div><div>Microsoft GitHub</div><div>Microsoft Project Online</div><div>Microsoft Azure DevOps</div></div>

- A. Mastered
- B. Not Mastered

**Answer: A**

#### Explanation:

Requirements	Tools
Connect your business process maps to the recommended work management system.	<div>Business process modeler connected to Microsoft Azure DevOps</div> <div>Microsoft Visio connected to Microsoft Project Server</div> <div>Microsoft Visual Studio connected to Microsoft Github</div>
Create business process maps.	<div>Business process modeler</div> <div>Microsoft Visual Studio</div> <div>Microsoft Visio</div>
Manage progress and work items.	<div>Microsoft Github</div> <div>Microsoft Project Online</div> <div>Microsoft Azure DevOps</div>

#### NEW QUESTION 227

- (Topic 6)

A client uses Dynamics 365 Finance.

You need to configure a workflow to allow users to approve or deny workflow tasks from outside the system.

What should you configure?

- A. a business event and a Microsoft PowerApps workflow
- B. a standard notification in workflows
- C. a standard date-based alert
- D. a business event a Microsoft Flow workflow
- E. a standard changed-based alert

**Answer:** D

#### NEW QUESTION 231

- (Topic 6)

You are implement Dynamic 365 Finance.

You must initiate a custom process when a new invoice journal is posted. The custom must complete actions in external systems.

You need to select a business event to trigger the custom process. What should you use?

- A. Microsoft Dataverse
- B. Dynamics 365 Customer Engagement
- C. Azure DevOps
- D. Power Automate

**Answer:** D

#### NEW QUESTION 233

HOTSPOT - (Topic 6)

Your company acquires another company that has a default installation of Dynamics 365 Finance.

A separate environment is configured for each lifecycle phase. The user acceptance testing (UAT) environment has been configured for the maximum amount of compute and database capacity.

You need to identify the environment tier aligned with each lifecycle phase.

Which environment tier should you select? To answer, select the appropriate options in the answer area.

NOTE: Each correct selection is worth one point.

Answer Area

Lifecycle phase	Environment tier
Evaluation and analysis	<div><div></div><div>Tier 1 Tier 2 Tier 3 Tier 4 Tier 5</div></div>
Customize	<div><div></div><div>Tier 1 Tier 2 Tier 3 Tier 4 Tier 5</div></div>
Golden configuration	<div><div></div><div>Tier 1 Tier 2 Tier 3 Tier 4 Tier 5</div></div>
User acceptance testing (UAT)	<div><div></div><div>Tier 1 Tier 2 Tier 3 Tier 4 Tier 5</div></div>

- A. Mastered
- B. Not Mastered

Answer: A

Explanation:

Box 1: Tier 1

Evaluation and analysis at Tier 1

Here's how the lifecycle maps to the available environments. If you already have environments deployed in your Lifecycle Services project, you can find the Environment Type and Environment Sub type on each environment's details page.

Lifecycle phase	Environment tier	Subscription	Environment types	Environment sub-type
Evaluation and analysis	Tier 1 sandbox	Cloud hosted	Customer-managed	Demo
Customize	Tier 1 sandbox	Cloud hosted or VHD	Customer-managed	Develop
Golden configuration	Tier 1 sandbox	Cloud hosted	Customer-managed	Develop
User acceptance testing (UAT)	Tiers 2-5 sandbox	Microsoft	Microsoft-managed or self-service	Not applicable
Go live	Production	Microsoft	Microsoft-managed or self-service	Not applicable

Table Description automatically generated

Box 2: Tier 1 Customization at Tier 1.

Box 3: Tier 1

Golden config at Tier 1

Box 4: Tier 5

User acceptance testing at Tiers 2-5.

Tiers 2-5 can be purchased to increase performance of the environment. The higher the tier, the more compute and database capacity is reserved for your use.



### NEW QUESTION 234

HOTSPOT - (Topic 6)

A company implements Dynamics 365 Supply Chain Management and Dynamics 365 Finance. The company adds new vendors to the system. A purchasing agent is responsible for populating all company-mandated fields on new vendor records.

Once the vendor is created, the purchasing manager must approve the vendor record

before the vendor record can be used in any purchase requisitions. Every Friday, the purchasing director must receive an email with the list of new vendors added to the system in the prior week.

You need to configure the system.

Which tools should you use? To answer, select the appropriate options in the answer area. NOTE: Each correct selection is worth one point.

Requirement	Tool
Assist a new purchasing agent with vendor creation.	<div>Task guide</div> <div>task guide</div> <div>Power Automate</div> <div>Workflow</div> <div>Business Process Modeler</div>
Send information about a new vendor to a purchasing manager for approval.	<div>Workflow</div> <div>Workflow</div> <div>Business Process Modeler</div> <div>Data task automation</div> <div>Regression suite automation tool</div>
Send the purchasing manager an email every Friday with new vendor information.	<div>Power Automate</div> <div>Power Automate</div> <div>Workflow</div> <div>Data task automation</div>

- A. Mastered  
B. Not Mastered

Answer: A

Explanation:

Requirement	Tool
Assist a new purchasing agent with vendor creation.	<div>Task guide</div> <div>Task guide</div> <div>Power Automate</div> <div>Workflow</div> <div>Business Process Modeler</div>
Send information about a new vendor to a purchasing manager for approval.	<div>Workflow</div> <div>Workflow</div> <div>Business Process Modeler</div> <div>Data task automation</div> <div>Regression suite automation tool</div>
Send the purchasing manager an email every Friday with new vendor information.	<div>Power Automate</div> <div>Power Automate</div> <div>Workflow</div> <div>Data task automation</div>

### NEW QUESTION 238

- (Topic 6)

You manage Dynamics 365 Supply Chain Management for a company.

A user is unable to perform a critical business process. The user's permissions must be updated.

You need to identify and resolve the user's missing permissions. Which feature should you use?

- A. Business process modeler  
B. Separation of duties  
C. Data security policies  
D. Security diagnostics for task recordings

Answer: D

### NEW QUESTION 239

DRAG DROP - (Topic 6)

A company is implementing Dynamics 365 Finance and preparing for go-live. You need to thoroughly test the system.

Which tools should you use? To answer, drag the appropriate tools to the correct scenarios. Each tool may be used once, more than once, or not at all. You may need to drag the split bar between panes or scroll to view content.

NOTE: Each correct selection is worth one point.

Tools	Scenario	Tool
Business process modeler	A developer needs to test code.	
Data task automation	A procurement analyst needs to test the purchase order entry process.	
RSAT	A system engineer needs to test integration with a third-party warehouse solution.	
SysTest		

- A. Mastered  
 B. Not Mastered

**Answer:** A

**Explanation:**

Tools	Scenario	Tool
Business process modeler	A developer needs to test code.	SysTest
Data task automation	A procurement analyst needs to test the purchase order entry process.	RSAT
RSAT	A system engineer needs to test integration with a third-party warehouse solution.	Data task automation
SysTest		

#### NEW QUESTION 244

- (Topic 6)

A company implements cymes 365 Finance on-premises. The company uses Microsoft Offer 2007.

The country/region address verifies a document originates must be included in the tower of Documents. Users must be able to edit the address for a document by using Microsoft Word Online.

You need to implement Busmen Document Management (BDM).

Which Two actions should you perform? Each correct answer present part of the solution

- A. Create a Power Automate cloud flow for each BDM template.  
 B. Upgrade Office 2007 to Microsoft office 2019.  
 C. Migrate the on-premises deployment to the cloud.  
 D. Upgrade Office 2007 to Microsoft Office 365.  
 E. Create a business process flow for each BDM template

**Answer:** AE

#### NEW QUESTION 245

- (Topic 6)

A company uses Dynamics 365 Finance. The company uses a number sequence named GenJml\_01 for general journal vouchers. The number sequence is configured as follows:

Configuration option	Value
Format	GNJL####
Smallest number allocation	1
Largest number allocation	9999
Next number allocation	10000
Allow user changes to a lower number	No
Allow user changes to a higher number	No

A user receives the following error message when creating a new general journal: Number sequence GenJrn\_01 has been exceeded.

You need to update the configuration of the number sequence to resolve the error.

Which two actions should you perform? Each correct answer presents pan of the solution.

NOTE: Each correct selection it worth one point.

- A. Update Allow user changes to a higher number to Yes.  
 B. Update the number format to GNJL#####.  
 C. Update the Next number allocation to 1.  
 D. Update the Largest number allocation to 99999.  
 E. Update the Smallest number allocation to 1000.

**Answer:** BD

**Explanation:**

When the number sequence in Dynamics AX has reached the highest number, an error message will occur, "number sequence has been exceeded." This can occur with any process done in Dynamics AX that uses a number sequence. The example below occurred when a sales order was trying to be confirmed. Due to the number sequence reaching the highest number, the system will not allow the sales order conformation to be completed.

To fix the issue, you will first need to look up the number sequence that will need to be changed.

- \* 1. Go to Accounts receivables> Accounts Receivables Parameters
- \* 2. Look for Conformation
- \* 3. Right-click view details on number sequence code (Sales\_31)
- \* 4. Click edit
- \* 5. Add another # in an alphanumeric segment that will extend the value field
- \* 6. Add another 9 in the largest field
- \* 7. Click edit again to save

Reference: <https://stoneridgesoftware.com/how-to-resolve-number-sequence-exceeded-error-in-dynamics-ax/>

#### NEW QUESTION 249

HOTSPOT - (Topic 6)

A company uses May 1 as the start of its fiscal year.

The company's management needs to define fiscal calendars and date intervals for financial activities and financial reporting.

You need to set up fiscal calendars and date intervals and understand how they are used in financial accounting.

Which of the following attributes or purposes does each of the data configurations have? To answer, select the appropriate configuration in the answer area.

NOTE: Each correct selection is worth one point.

Date configurations

Attributes

Fiscal calendar

Is an optional setup

Is a mandatory setup

Is company specific

Contains only one fiscal year

Date interval

Is an optional setup

Is a mandatory setup

Used by one legal entity only

Can cross different fiscal calendars

Date configurations

Purposes

Fiscal calendar

Sales calendar

Fixed asset calendar

Warehouse calendar

Procurement calendar

Date interval

Easy date range selection

Mark a date range for journal adjustments

Mark a date for financial auditing

Limit posting date range

- A. Mastered
- B. Not Mastered

Answer: A

Explanation:

References:  
<https://docs.microsoft.com/en-us/dynamics365/unified-operations/financials/budgeting/fiscal-calendars-fiscal-years-periods>

NEW QUESTION 252

HOTSPOT - (Topic 6)

A company sets up a data package to import data by using the data management framework. You have the following data entity sequence.

Entity	Execution unit ↑	Level in execution unit	Sequence in level	Fail level on error	Fail execution u...
Sales tax codes	1	1	1	<input type="checkbox"/>	<input type="checkbox"/>
Sales tax code values	1	1	2	<input type="checkbox"/>	<input type="checkbox"/>
Sales tax code limits	1	1	3	<input type="checkbox"/>	<input type="checkbox"/>
Sales tax groups	1	1	4	<input type="checkbox"/>	<input type="checkbox"/>
Sales tax group details	1	1	5	<input type="checkbox"/>	<input type="checkbox"/>
Sales tax item groups	1	1	6	<input type="checkbox"/>	<input type="checkbox"/>
Sales tax exempt numbers	2	1	1	<input type="checkbox"/>	<input type="checkbox"/>
Sales tax exempt code	3	1	1	<input type="checkbox"/>	<input type="checkbox"/>
Sales tax reporting codes	4	1	1	<input type="checkbox"/>	<input type="checkbox"/>

Use the drop-down menus to select the answer choice that answers each question based on the information presented in the graphic. NOTE: Each selection is worth one point.



Which data entity will be imported first?

▼

Sales tax item groups
Sales tax code values
Sales tax reporting codes
Sales tax groups

What data entities will start the importing process immediately after the data package is submitted for execution?

▼

All entities in the list
Sales tax codes, sales tax groups, and sales tax item groups only
Sales tax codes, sales tax exempt number, sales tax exempt code, and sales tax reporting codes only
Sales tax codes, sales tax code values, sales tax code limits, sales tax groups, sales tax group details, and sales tax item groups

- A. Mastered
- B. Not Mastered

Answer: A

Explanation:

References:

<https://docs.microsoft.com/en-us/dynamics365/unified-operations/dev-itpro/data-entities/data-entities-data-packages?toc=/fin-and-ops/toc.json#import>

NEW QUESTION 256

DRAG DROP - (Topic 6)

A multinational company has many legal entities and a complex organizational structure.

The management of the company wants to set up an organizational hierarchy to help improve efficiency.

You need to help create the organizational hierarchy.

In which order should you recommend that actions be performed to create an organizational hierarchy? To answer, move all actions from the list of actions to the answer area and arrange them in the correct order.

• • • • •

Answer Area

Actions

Add organizations to the hierarchy

Assign a hierarchy purpose

Create organizations

Create a hierarchy

Plan the organizational model

>

<

^

v

- A. Mastered
- B. Not Mastered

Answer: A

Explanation:

References:

<https://docs.microsoft.com/en-us/dynamics365/unified-operations/fin-and-ops/organization-administration/tasks/create-organization-hierarchy>

NEW QUESTION 258

- (Topic 6)

You are a Dynamics 365 for Finance and Operations security administrator. Users are reporting that they cannot access a given form in the system.

You need to quickly identify what roles, duties, and privileges grant access to this form to determine the best course of action for granting access.

What should you do?

- A. Security duty assignments report
- B. Security role access report
- C. Security development tool
- D. Security diagnostics
- E. Maintenance mode

Answer: D

NEW QUESTION 261

SIMULATION - (Topic 6)

You are a functional consultant for Contoso Entertainment System USA (USMF).

You need to prevent a user named Arnie from adding receivable records to the customer payment journal. The solution must use only the default security roles.

To complete this task, sign in to the Dynamics 365 portal.

- A. Mastered
- B. Not Mastered



**Answer:** A

**Explanation:**

The Accounts receivable payments clerk role contains the maintain customer payments duty. One of the privileges in the maintain customer payments duty is the Post customer payment journal transactions privilege.

You need to duplicate the Accounts receivable payments clerk role and duplicate the maintain customer payments duty. Remove the Post customer payment journal privilege from the new duty. Remove the original maintain customer payments duty from the new role and add the new duty to the role. Remove the Accounts receivable payments clerk role from Arnie and assign the new role to Arnie.

This solution will ensure that Arnie can do everything he could do before with the exception of adding receivable records to the customer payment journal. It will also ensure that anyone else assigned to the Accounts receivable payments clerk role can do everything they'd expect to be able to do with that role.

An alternative solution would be to deny the Post customer payment journal transactions privilege in the maintain customer payments duty. However, this solution would affect all users assigned to the Accounts receivable payments clerk role.

**NEW QUESTION 263**

DRAG DROP - (Topic 6)

You are using Dynamics 365 Finance and preparing for a service update. You must test the following solution components:

? Sales order entry process

? Dynamics 365 Finance custom development

You need to determine which type of testing is required for the solution components.

Which testing types should you use? To answer, drag the appropriate testing types to the correct solution components. Each type may be used once, more than once, or not at all. You may need to drag the split bar between panes or scroll to view content.

NOTE: Each correct selection is worth one point.

**Answer Area**

Testing types	Solution component	Testing type
Performance	Sales order entry process	
Regression	Dynamics 365 Finance custom development	
Unit		

- A. Mastered
- B. Not Mastered

**Answer:** A

**Explanation:**

**Answer Area**

Testing types	Solution component	Testing type
Performance	Sales order entry process	Regression
Regression	Dynamics 365 Finance custom development	Unit
Unit		

**NEW QUESTION 264**

- (Topic 6)

You are a Dynamics 365 for Finance and Operations systems administrator.

Your company needs to document and test all possible scenarios for a given implementation. Implementation gaps need to be documented using the tool available for tracking and linking to delivered extensions.

You need to identify the correct tool to accomplish this. What should you use?

- A. APQC Unified Libraries
- B. Shared asset library
- C. Business process modeler (BPM)
- D. Microsoft Azure DevOps

**Answer:** C

**NEW QUESTION 266**

- (Topic 6)

A company uses Dynamics 365 Finance. You configure a standard workflow for travel requisitions approvals. You configure the workflow which requires a single approver. You configure a pool of five managers to approve all travel requisitions. Managers must submit their own travel requisitions. A separate manager must approve the travel requisition. You need to ensure the system prevents managers from approving their own travel requisitions. What should you do?

- A. Create an escalation path for the Approve travel requisition step of the travel requisition workflow.
- B. Configure an activation condition on the travel requisition workflow to prevent activation for managers.
- C. Set the value of the Disallow approval by submitter option to Yes.
- D. Configure a condition to prevent the approval step from running when the originator is a manager.

**Answer: C**

**Explanation:**

Specify a final approver

You can designate a final approver for scenarios where the approver is the person who submitted the document for approval and the "disallow approval by submitter" is being used. Follow these steps to specify a final approver.

? In the workflow editor, right-click the approval element, and then select Properties to open the Properties form.

? In the left pane, click Advanced settings.

? Select the Use final approver check box.

? In the list, select a user to be the final approver.

Reference: <https://learn.microsoft.com/en-us/dynamics365/fin-ops-core/fin-ops/organization-administration/configure-approval-process-workflow>

<https://learn.microsoft.com/en-us/dynamics365/fin-ops-core/fin-ops/organization-administration/configure-approval-step-workflow>

**NEW QUESTION 267**

DRAG DROP - (Topic 6)

A user attempts to view of vendors in Dynamics 365 Finance.

You collaborate with the user to access Dynamics 365 Finance. The user logs their device and credentials to show you the vendor list menu is missing. You log in an create a task recording on the user's device. The recording shows you accessing the menu. You then upload the recording.

You need to use the security diagnostics tool on your device to gran the user permissions. Which four actin should you perform in sequence? To answer, move the approve actions

from the list of actions to the answer area and arrange them in the correct order.



- A. Mastered
- B. Not Mastered

**Answer: A**

**Explanation:**

- Select Open from LCS;
- Enter the user's ID;
- View the objects where the Missing permissions field displays the value Yes;
- Add a reference to a role, duty, or privilege.

<https://learn.microsoft.com/en-us/dynamics365/fin-ops-core/dev- itpro/sysadmin/tasks/security-diagnostics-task-recordings>

**NEW QUESTION 270**

- (Topic 6)

You manage a Dynamic 365 Finance environment. Users report slow queries, deadlocks, and crashes. You need identify which tool to use to troubleshoot. What should you use?

- A. System diagnostics
- B. DirectQuery
- C. Microsoft Azure Active Directory Connect Health Agent
- D. Environment monitoring

**Answer: D**

**NEW QUESTION 274**

DRAG DROP - (Topic 6)

You are integrating Dynamic 365 Supply chain Management with data from external system.

You need to select component for various integration scenarios.

Which component should you use? To answer, drag the appropriate components to the correct scenario. Each component may be used once, more than once, or not at all. You need to drag the split bar between panes or scroll to view content.

Components	Answer Area										
<div><div>Data entities only</div><div>Composite data entities only</div><div>Data entities and composite data entities</div></div>	<table><thead><tr><th>Scenario</th><th>Component</th></tr></thead><tbody><tr><td>Implement synchronous OData integration.</td><td>Component</td></tr><tr><td>Implement batched data integration.</td><td>Component</td></tr><tr><td>Include header and line data in a single XML document.</td><td>Component</td></tr><tr><td>Implement the Microsoft Excel Data Connector add-in.</td><td>Component</td></tr></tbody></table>	Scenario	Component	Implement synchronous OData integration.	Component	Implement batched data integration.	Component	Include header and line data in a single XML document.	Component	Implement the Microsoft Excel Data Connector add-in.	Component
Scenario	Component										
Implement synchronous OData integration.	Component										
Implement batched data integration.	Component										
Include header and line data in a single XML document.	Component										
Implement the Microsoft Excel Data Connector add-in.	Component										

- A. Mastered  
B. Not Mastered

Answer: A

Explanation:

Components	Answer Area										
<div><div>Data entities only</div><div>Composite data entities only</div><div>Data entities and composite data entities</div></div>	<table><thead><tr><th>Scenario</th><th>Component</th></tr></thead><tbody><tr><td>Implement synchronous OData integration.</td><td>Data entities only</td></tr><tr><td>Implement batched data integration.</td><td>Data entities only</td></tr><tr><td>Include header and line data in a single XML document.</td><td>Composite data entities only</td></tr><tr><td>Implement the Microsoft Excel Data Connector add-in.</td><td>Data entities only</td></tr></tbody></table>	Scenario	Component	Implement synchronous OData integration.	Data entities only	Implement batched data integration.	Data entities only	Include header and line data in a single XML document.	Composite data entities only	Implement the Microsoft Excel Data Connector add-in.	Data entities only
Scenario	Component										
Implement synchronous OData integration.	Data entities only										
Implement batched data integration.	Data entities only										
Include header and line data in a single XML document.	Composite data entities only										
Implement the Microsoft Excel Data Connector add-in.	Data entities only										

NEW QUESTION 277

DRAG DROP - (Topic 6)

A company implements finance and operations apps.

The company needs to implement master planning and budgeting. You need to recommend which apps the company should implement.

Which apps should you recommend? To answer, drag the appropriate apps to the correct capabilities. Each app may be used once, more than once, or not at all.

You may need to drag the split bar between panes or scroll to view content.

NOTE: Each correct selection is worth one point.

Apps	Answer Area						
<div><div>Dynamics 365 Supply Chain Management</div><div>Dynamics 365 Finance</div><div>Dynamics 365 Human Resources</div></div>	<table><thead><tr><th>Capability</th><th>App</th></tr></thead><tbody><tr><td>Master planning</td><td></td></tr><tr><td>Budgeting</td><td></td></tr></tbody></table>	Capability	App	Master planning		Budgeting	
Capability	App						
Master planning							
Budgeting							

- A. Mastered  
B. Not Mastered

Answer: A

Explanation:

Box 1: Dynamics 365 Supply Chain Management

Master planning in is in Dynamics 365 Supply Chain Management.

Master planning uses information from many different areas of the system to determine how much of each item you must purchase and by what date you must purchase the inventory (based on lead times in Dynamics 365 for Supply Chain Management) to fulfill the item requirements on time.

Box 2: Dynamics 365 Finance Budgeting is in Dynamics 365 Finance.

NEW QUESTION 281

- (Topic 6)

You are a Dynamics 365 Finance system administrator.

Users report that purchase order numbers are being generated in a non-continuous configuration during bulk purchase order creation.

You need to determine how to improve performance.

Solution: Enable Preallocation for the purchase order number sequence. Does the solution meet the goal?

- A. Yes  
B. No

Answer: A

Explanation:

Reference:

<https://www.dynamics-tips.com/organization-administration/number-sequences-explained>

NEW QUESTION 286

SIMULATION - (Topic 6)

You are a functional consultant for Contoso Entertainment System USA (USMF).

You need to ensure that when automated emails are sent by the Finance and Operations system, the emails are sent in bulk every five minutes.

To complete this task, sign in to the Dynamics 365 portal.

- A. Mastered  
B. Not Mastered

Answer: A



**Explanation:**

- ? Go to System administration > Periodic tasks > Email processing > Email distributor batch.
- ? Enable the Batch processing option.
- ? Ensure No end date is selected.
- ? Configure the frequency to 5 minutes.
- ? Save the changes.

**NEW QUESTION 287**

DRAG DROP - (Topic 6)  
DRAG DROP

A company uses Dynamics 365 Finance.  
Your company provides you with a workbook that lists individuals, companies, and legal entities. The workbook also includes descriptions about each individual, company, and legal entity.  
You need to configure party roles for the Global Address Book.  
Which party roles should you use? To answer, drag the appropriate party roles to the correct descriptions. Each party role may be used once, more than once, or not at all. You may need to drag the split bat between panes or scroll to view content.  
NOTE: Each correct selection is worth one point.

Party roles	Description	Party role
Customer		
Prospect	Purchases goods and services produced by individuals	
Vendor	Purchases goods and services produced by companies	
Competitor	Potentially provides legal entities with a service or benefit	
Worker	Supplies legal entities with products in exchange for payment	
User	Provides goods or services similar to what your company provides	
Contact		

- A. Mastered
- B. Not Mastered

**Answer:** A

**Explanation:**

Party roles	Description	Party role
Customer		
Prospect	Purchases goods and services produced by individuals	Customer
Vendor	Purchases goods and services produced by companies	Customer
Competitor	Potentially provides legal entities with a service or benefit	Prospect
Worker	Supplies legal entities with products in exchange for payment	Vendor
User	Provides goods or services similar to what your company provides	Competitor
Contact		

**NEW QUESTION 291**

- (Topic 6)  
A company is implementing Dynamic 365 Finance.  
You must load configuration data from a previous version of Dynamic 365 Finance. You extract data from the previous system into a Microsoft Excel workbook. Each worksheet contains setup and configuration data that correlates to a specific data entity.  
You load sites and warehouses from the worksheets into the data entities: Another user makes changes to the workbook.  
You need to load the updated version of the workbook into the current data project.

- A. Select the Resequence button
- B. Use the existing entities.
- C. Run the Run project option.
- D. Replace the existing entities.

**Answer:** A

**NEW QUESTION 294**



#### SIMULATION - (Topic 6)

You are a functional consultant for Contoso Entertainment System USA (USMF).

USMF plans to create reports for executives. The reports will compare the sales from a month this year to the sales from the same month last year.

You need to prepare the date intervals for the planned reports. To complete this task, sign in to the Dynamics 365 portal.

- A. Mastered
- B. Not Mastered

**Answer:** A

#### Explanation:

? Navigate to General ledger > Ledger setup > Date intervals.

? Click New.

? In the Date Interval Code field, type a code such as CurrMth PY.

? In the Description field, type a description such as Current Month Previous Year.

? In the Interval Start section, select Month in the From date period type field.

? In the From date start/end, select Start.

? In the From date +/- field, type -1 for -1 year (previous year).

? In the From date adjustment unit field, select Year.

? In the Interval End section, select Month in the From date period type field.

? In the From date start/end, select End.

? Click Save to save the date interval.

#### NEW QUESTION 297

- (Topic 6)

You have the following Dynamics 365 Finance instances:

Instance	Comments
1	Contains configuration data for a company named CompanyA
2	Contains a blank setup for a company named CompanyB

You must copy the configuration data from CompanyA to CompanyB. Solution: Use dual-write to copy the configuration data.

Does the solution meet the goal?

- A. Yes
- B. No

**Answer:** B

#### Explanation:

Reference:

<https://docs.microsoft.com/en-us/dynamics365/fin-ops-core/dev-itpro/data-entities/copy-configuration>

#### NEW QUESTION 302

- (Topic 6)

A company is preparing for go-live with Dynamics 365 Finance. The company plans to test the sales order process.

You need to ensure that a delivery note is generated for each sales order created. What should you use?

- A. Chain test case
- B. Derived test case
- C. SysTest
- D. Data task automation

**Answer:** B

#### NEW QUESTION 305

- (Topic 6)

You plan the migration from Dynamics AX 2012 R3 to a Dynamics 365 for Finance and Operations environment. You will be using Lifecycle Services (LCS) and the tools provided with it.

You need to clean up data, review and configure SQL optimizations, and identify deprecated features in your code. What tool should you use?

- A. Microsoft Azure DevOps
- B. Upgrade analyzer
- C. Data Import/Export Framework (DIXF)
- D. Code upgrade estimation tools

**Answer:** B

#### NEW QUESTION 309

- (Topic 6)

You develop a new purchasing solution for a Dynamics 365 for Finance and Operations environment.

You must provide functional test passes for the purchasing solution.

You need to plan a production environment test flow for the purchasing solution.

What three steps should you verify in the functional passes of the purchasing solution?

- A. Purchase orders are generated
- B. Item requirements are present
- C. Production order processing occurs
- D. Production orders are generated

E. The item master is designed and released to a legal entity

**Answer:** ABE

#### NEW QUESTION 313

- (Topic 6)

You are a Dynamics 365 for Finance and Operations systems administrator.

Microsoft recently released a new feature for public preview that would add significant value to your organization without licensing adjustments.

You need to enable the feature.

Where can you enable the preview feature?

- A. Solution management
- B. Lifecycle Services
- C. Organizational administration module
- D. experience.dynamics.com
- E. System administration module

**Answer:** B

#### Explanation:

References:

<https://docs.microsoft.com/en-us/dynamics365/fin-ops-core/fin-ops/get-started/public-preview-releases>

#### NEW QUESTION 318

- (Topic 6)

You are a Dynamics 365 for Finance and Operations systems administrator.

An issue has been reported that appears to be a base Dynamics 365 bug. The system was last updated three weeks ago. Searching for the issue by description in Lifecycle Services is not working. You need to determine other ways to search for similar issues to help narrow down the search before opening a Microsoft ticket.

What are two ways to search for a released hotfix? Each correct answer presents a complete solution.

NOTE: Each correct selection is worth one point.

- A. By industry
- B. By Microsoft support ticket number
- C. By AOT object name
- D. Date range for release

**Answer:** BC

#### Explanation:

References:

<https://docs.microsoft.com/en-us/dynamics365/unified-operations/dev-itpro/lifecycle-services/issue-search-lcs>

#### NEW QUESTION 320

- (Topic 6)

A company is implementing Dynamic 365 Finance.

You apply an update. After you test the update, you find that the delivery dates on some sales orders occur in the past. You identify data conflicts on the test results.

You need to ensure that the delivery date value is equal to or greater than the current data in future automated testing .

Which two options could you configure? Each answer present a complete solution. NOTE: Each correct selection is worth one point.

- A. Task Recorder sub-task
- B. Task Recorder developer placeholder
- C. Operators for validation
- D. Current value

**Answer:** CD

#### Explanation:

Reference:

<https://docs.microsoft.com/en-us/dynamics365/fin-ops-core/dev-itpro/perf-test/rsat/rsat- validate-expected>

#### NEW QUESTION 325

- (Topic 6)

You are a Dynamics 365 for Finance and Operations system administrator.

A user is reporting an issue with the Sales Order form. The UI for the form is not loading properly, and there

are some performance issues. The object was working fine until the most recent update release. The user has personalized this form, is using Microsoft Internet Explorer 11, and no other users are reporting issues.

You need to resolve the issue. What should you do?

- A. Export, delete, then reimport the usage data for the sales form object.
- B. Disable and then re-enable the user.
- C. Reset all the usage data for the user.
- D. Reimport and compile the AOT object causing issues.

**Answer:** C

#### NEW QUESTION 326

- (Topic 6)

A company implements Dynamics 365 for Finance and Operations and sets up and configures the system to support its reporting requirements using Microsoft Power BI. A user creates a chart in her Power BI instance to display customer order patterns for the top 10 customers daily. You need to configure the Power BI integration to pin the chart to the user's workspace in Dynamics 365 for Finance and Operations. Which three actions should you perform? Each correct answer presents part of the solution.  
NOTE: Each correct selection is worth one point.

- A. In the Dynamics 365 for Finance and Operations client, authorize sign-in to Power BI.
- B. In Azure Active Directory, grant the customer services manager administrative permissions to the company's Azure Active Directory account to run the report.
- C. In Microsoft Azure Active Directory, add the PowerBI service to the app registration and grant the necessary delegated permissions.
- D. In the Entity store, configure the Application ID and Application key for PowerBI.
- E. In the Dynamics 365 for Finance and Operations System administration setup screen in PowerBI.com, configure the application ID and application key.

**Answer:** ACE

**Explanation:**

References:

<https://docs.microsoft.com/en-us/dynamics365/unified-operations/dev-itpro/analytics/configure-power-bi-integration>

### NEW QUESTION 330

- (Topic 6)

Note: This question is part of a series of questions that present the same scenario. Each question in the series contains a unique solution. Determine whether the solution meets the stated goals. Some question sets might have more than one correct solution, while others might not have a correct solution. After you answer a question in this section, you will NOT be able to return to it. As a result, these questions will not appear in the review screen. You are a Dynamics 365 Finance sales manager. You use a Power BI dashboard that shows near-real-time sales data from reports and tiles. It is impractical to keep switching between multiple applications. You need to configure a way to access the Power BI reports within the Dynamics 365 Finance client. Solution: Embed the Power BI reports on your application homepage. Does the solution meet the goal?

- A. Yes
- B. No

**Answer:** B

**Explanation:**

Reference:

<https://docs.microsoft.com/en-us/dynamics365/fin-ops-core/dev-itpro/analytics/pin-power-bi-reports>

### NEW QUESTION 334

- (Topic 6)

Note: This question is part of a series of questions that present the same scenario. Each question in the series contains a unique solution that might meet the stated goals. Some question sets might have more than one correct solution, while others might not have a correct solution. After you answer a question in this section, you will NOT be able to return to it. As a result, these questions will not appear in the review screen. You are developing a file-based integration to Dynamics 365 Finance. Microsoft Excel files with 15,000 or more records need to be imported into the system periodically by individual users. The records need to be imported in full within a 5-minute approved window. You need to determine how to accomplish the import into the system. Solution: Import the data by using the Application Integration Framework. Does the solution meet the goal?

- A. Yes
- B. No

**Answer:** B

### NEW QUESTION 339

DRAG DROP - (Topic 6)

A company is implementing Dynamics 365 Finance. The company hires a new accounting team member. The team member will be responsible for generating deposit slips and cancelling payments. The team member must be able to view the Positive Pay report. You need to configure security for the new team member. Which security components should you use? To answer, drag the appropriate components to the correct requirements. Each component may be used once, more than once, or not at all. You may need to drag the split bar between panes or scroll to view content.  
NOTE: Each correct selection is worth one point.

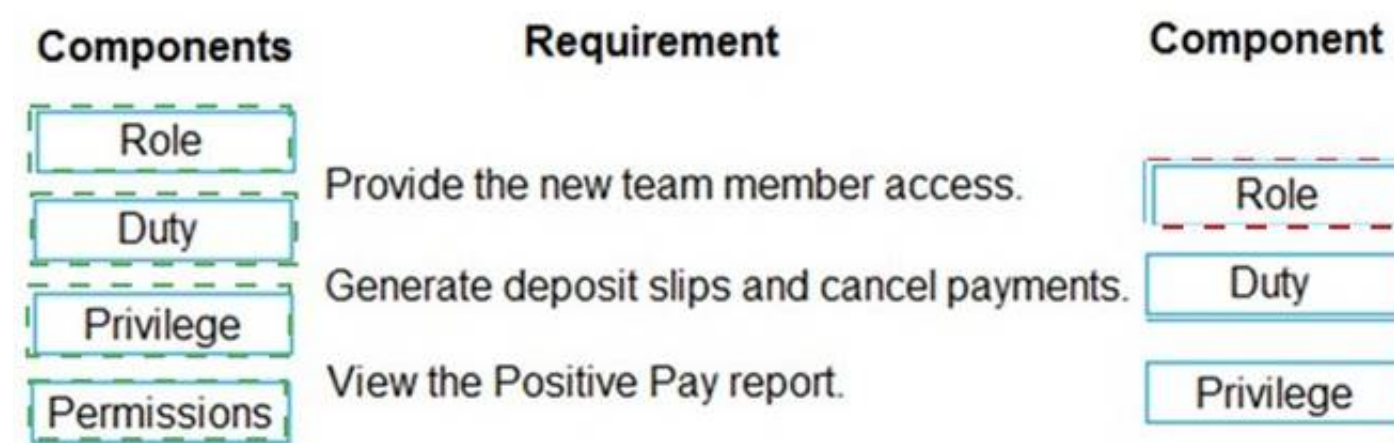
Components	Requirement	Component
<div>Role</div>	Provide the new team member access.	<div></div>
<div>Duty</div>	Generate deposit slips and cancel payments.	<div></div>
<div>Privilege</div>	View the Positive Pay report.	<div></div>
<div>Permissions</div>		

A. Mastered

B. Not Mastered

**Answer:** A

**Explanation:**



#### NEW QUESTION 343

- (Topic 6)

You manage a Dynamics 365 for Finance and Operations environment. Users report slow queries, deadlocks, and crashes. You need identify which tool to use to troubleshoot. What should you use?

- A. System diagnostics
- B. Environment monitoring
- C. DirectQuery
- D. Microsoft Azure Active Directory Connect Health Agent

**Answer:** B

**Explanation:**

Reference:

<https://blogs.msdn.microsoft.com/axsa/2018/06/05/how-to-use-environment-monitoring-view-raw-logs/>

#### NEW QUESTION 347

SIMULATION - (Topic 6)

You are a functional consultant for Contoso Entertainment System USA (USMF).

You discover that the currency exchange rates in the system are outdated.

You need to ensure that the system uses the latest currency exchange rates from the Central Bank of Europe.

To complete this task, sign in to the Dynamics 365 portal.

- A. Mastered
- B. Not Mastered

**Answer:** A

**Explanation:**

You need to import the latest currency exchange rates. You can also configure a schedule to automatically import the latest currency exchange rates.

? Navigate to General Ledger > Currencies > Import currency exchange rates

? Select the Default Exchange Rate Type.

? Select Central Bank of Europe for the Exchange Rate Provider.

? In the Import as of field, select Today's date.

? Enable the Override existing exchange rates option.

? To schedule automatic updates, expand the Run the background section.

? Enable Batch Processing.

? Click on the Recurrence link.

? Configure a schedule for exchange rates import.

? Click OK to save the changes.

#### NEW QUESTION 351

- (Topic 6)

A company wants to display a warehouse's performance metrics on a Power BI dashboard on a display in the warehouse.

You need to connect the Power BI instance to the Dynamics 365 Supply Chain Management instance that the warehouse uses.

Which three actions should you perform? Each correct answer presents part of the solution.

NOTE: Each correct selection is worth one point.

- A. Link Azure to Dynamics 365 Finance by entering the Application ID in Dynamics 365 Finance.
- B. Register the preconfigured Dynamics 365 service account within Azure.
- C. Obtain Azure Active Directory (Azure AD) administrative access.
- D. Configure the Dynamics 365 Entity Store.
- E. Register the Dynamics 365 application URL within Azure.

**Answer:** ACE

**Explanation:**



Reference:

<https://docs.microsoft.com/en-us/dynamics365/fin-ops-core/dev-itpro/analytics/configure-power-bi-integration>

#### NEW QUESTION 354

HOTSPOT - (Topic 6)

You set up a new instance of Dynamics 365 for Finance and Operations. Your company sells widgets in cases of 12 units and pallets of 144 cases. You need to establish the units of measure.

Which parameter is used to detail the units of measure? To answer, select the detail to match the parameter in the answer area.

NOTE: Each correct selection is worth one point.

Parameter	Detail
Unit class	<div>Quantity</div> <div>Mass</div> <div>Area</div>
From unit in widgets-per-case conversion	<div>Unit</div> <div>Case</div> <div>Pallet</div> <div>Widgets</div>
To unit in cases-per-pallet conversion	<div>Unit</div> <div>Case</div> <div>Pallet</div> <div>Widgets</div>

- A. Mastered
- B. Not Mastered

**Answer:** A

#### Explanation:

References:

<https://docs.microsoft.com/en-us/dynamicsax-2012/unit-conversions-form?redirectedfrom=MSDN>

#### NEW QUESTION 355

- (Topic 4)

You need to identify a mechanism to enable products for the sales street team application that meet the requirements.

Which tool should you use?

- A. Application connector
- B. Common Data Service
- C. Batch data APIs
- D. Dual-write
- E. ODataAPIs

**Answer:** D

#### Explanation:

Reference: <https://cloudblogs.microsoft.com/dynamics365/it/2020/03/27/dual-write-automates-data-flow-between-dynamics-365-applications-and-common-data-service/>

#### NEW QUESTION 358

- (Topic 5)

Which two features should you use to meet the customer exchange requirements? Each correct answer presents part of the solution.

NOTE: Each correct selection is worth one point.

- A. Case management
- B. Customer credit
- C. Document handling
- D. Quality order
- E. Quarantine order

**Answer:** AC

#### Explanation:

<https://docs.microsoft.com/en-us/learn/modules/managing-cases-with-dynamics-365/1-case-management-overview>

<https://docs.microsoft.com/en-us/dynamicsax-2012/appuser-itpro/configure-document-management>

#### NEW QUESTION 360

- (Topic 5)

You must meet the call center phone system requirements for new customers. What should you use?

- A. Workflow B Guides
- B. Remote assist
- C. Power Automate

**Answer:** C

#### NEW QUESTION 363

HOTSPOT - (Topic 4)

You need to design the street team mobile application for creating sales orders in the mobile application. Which technologies should you use? To answer, select the appropriate options in the answer area.  
NOTE: Each correct selection is worth one point.

Requirement	Technology
Store product information for use in the mobile application.	<div><div></div><div><div>Common Data Service</div><div>Dynamics 365 Supply Chain Management</div><div>Mobile App SQL lite database</div><div>Power Apps</div></div></div>
Integrate sales orders from the mobile app to Dynamics 365.	<div><div></div><div><div>Common Data Service</div><div>Dual-write</div><div>Virtual Entities</div><div>Data Integration APIs</div></div></div>

- A. Mastered  
B. Not Mastered

**Answer:** A

**Explanation:**

Requirement	Technology
Store product information for use in the mobile application.	<div><div></div><div><div>Common Data Service</div><div>Dynamics 365 Supply Chain Management</div><div>Mobile App SQL lite database</div><div>Power Apps</div></div></div>
Integrate sales orders from the mobile app to Dynamics 365.	<div><div></div><div><div>Common Data Service</div><div>Dual-write</div><div>Virtual Entities</div><div>Data Integration APIs</div></div></div>

#### NEW QUESTION 368

- (Topic 4)

You need to extend the warranty and SLAs to meet the requirements. What should you do?

- A. Integrate the solution with a Dynamics 365 Data Entity.  
B. Configure a Power Automate flow for the solution.  
C. Configure the solution for a Power Virtual Agents channel.  
D. Integrate the solution into a Power Apps integrated social media platform.

**Answer:** C

**Explanation:**

Reference:

<https://docs.microsoft.com/en-us/dynamics365/customer-service/configure-bot-virtual-agent>

#### NEW QUESTION 371

- (Topic 3)

You need to troubleshoot the source of and reason for the errors reported by the sales representatives. Which tool should you use?

- A. Alert Service  
B. System diagnostics  
C. Environment History  
D. Microsoft Azure Virtual Machine  
E. Azure Monitor

**Answer:** C

### NEW QUESTION 372

HOTSPOT - (Topic 3)

You need to implement a solution for the sales associates business process navigation training.

Which technologies should you use? To answer, select the appropriate options in the answer area.

NOTE: Each correct selection is worth one point.

Requirement	Technology
Document the business process that the sales associate needs to complete.	<div><div></div><div>Microsoft Excel</div><div>Task Recorder</div><div>Business Process Modeler</div><div>Microsoft Teams</div></div>
Upload the business process for the user guide.	<div><div></div><div>Help Documentation</div><div>Dynamics 365 Workflow</div><div>Lifecycle Services</div><div>Task Management</div></div>

- A. Mastered  
B. Not Mastered

**Answer:** A

**Explanation:**

Requirement	Technology
Document the business process that the sales associate needs to complete.	<div><div></div><div>Microsoft Excel</div><div>Task Recorder</div><div>Business Process Modeler</div><div>Microsoft Teams</div></div>
Upload the business process for the user guide.	<div><div></div><div>Help Documentation</div><div>Dynamics 365 Workflow</div><div>Lifecycle Services</div><div>Task Management</div></div>

### NEW QUESTION 375

- (Topic 3)

You need to implement a solution for importing core system data.

Which two tools should you use? Each correct answer presents part of the solution. NOTE: Each correct selection is worth one point.

- A. Data Validation checklist workspace  
B. Record templates  
C. Multiple data templates for each entity  
D. Lifecycle Services Work items  
E. Data Task Automation

**Answer:** AE

**Explanation:**

Reference:

<https://docs.microsoft.com/en-us/dynamics365/fin-ops-core/dev-itpro/user-interface/data-validation-workspace>

<https://docs.microsoft.com/en-us/dynamics365/fin-ops-core/dev-itpro/data-entities/data-task-automation>

### NEW QUESTION 377

HOTSPOT - (Topic 3)

You need to implement a solution for the project task management.

Which tool or tools support the solution? To answer, select the appropriate options in the answer area.

NOTE: Each correct selection is worth one point.

Requirement	Tool
Manage workstreams and project tasks.	<div><div></div><div>Microsoft Tasks</div><div>Visual Studio</div><div>Microsoft Project</div><div>Azure DevOps</div></div>
Recommend the task solution for future One Version initiatives.	<div><div></div><div>Azure Active Directory Integration</div><div>Lifecycle Services Integration</div><div>Dual-Write Integration</div><div>Dynamics 365 Finance Integration</div></div>

- A. Mastered  
B. Not Mastered

**Answer:** A

**Explanation:**

Requirement	Tool
Manage workstreams and project tasks.	<div><div></div><div>Microsoft Tasks</div><div>Visual Studio</div><div>Microsoft Project</div><div>Azure DevOps</div></div>
Recommend the task solution for future One Version initiatives.	<div><div></div><div>Azure Active Directory Integration</div><div>Lifecycle Services Integration</div><div>Dual-Write Integration</div><div>Dynamics 365 Finance Integration</div></div>

#### NEW QUESTION 378

- (Topic 3)

You need to resolve the form personalization issues. What should you do?

- A. Clear the sales associate users' browser cache and site settings for the Dynamics 365 instance.  
B. Disable and then re-enable the sales associate users.  
C. Clear the personalization for each form.  
D. Reset all usage data.  
E. Redeploy the form.

**Answer:** C

#### NEW QUESTION 380

- (Topic 2)

You need to ensure that Liberty's can use the business processes from Contoso. Ltd. What should you do?

- A. Download a clean business process library template and create the Contoso, Ltd s business processes by using Task Recorder.  
B. import a business process library Excel file from Contos  
C. It  
D. s business process Liberty.  
E. Create a new business process library and use Task Recorder to document business processes.  
F. Use Task Recorder to create Contos  
G. Li  
H. business processes for the current implementation.

**Answer:** B

**Explanation:**

Reference:

<https://docs.microsoft.com/en-us/dynamics365/fin-ops-core/dev-itpro/lifecycle-services/creating-editing-browsing>

#### NEW QUESTION 382

HOTSPOT - (Topic 2)

You need to resolve issues with the default Excel templates.

What should you do? To answer, select the appropriate options in the answer area. NOTE Each correct selection is worth one point.



Answer Area

Requirement	Option
Configure a usable Excel template from the sales order form.	<div>Update the existing Customer form document template.</div> <div>Upload a modified document template.</div> <div>Delete and replace the existing base document template.</div> <div>Create a new Customer entity for the form.</div> <div>These are the options for a usable Excel template.</div>
Assign the document template.	<div>Customer Entity for the form</div> <div>Customer Form</div> <div>Customer template for the form</div>

- A. Mastered  
B. Not Mastered

Answer: A

Explanation:

Answer Area

Requirement	Option
Configure a usable Excel template from the sales order form.	<div>Update the existing Customer form document template.</div> <div>Upload a modified document template.</div> <div>Delete and replace the existing base document template.</div> <div>Create a new Customer entity for the form.</div> <div>These are the options for a usable Excel template.</div>
Assign the document template.	<div>Customer Entity for the form</div> <div>Customer Form</div> <div>Customer template for the form</div>

#### NEW QUESTION 384

- (Topic 2)

You need to determine the root cause for the regional manager's issue. What is the root cause?

- A. The sales order was not created.  
B. The user does not have the proper permissions.  
C. There is a filter on the grid.  
D. The user is in the wrong environment.

Answer: D

#### NEW QUESTION 387

HOTSPOT - (Topic 2)

You need to configure the workflows.

What should you do? To answer, select the appropriate options in the answer area. NOTE: Each correct selection is worth one point.

Direct Delivery Sales Order is delivered.	<div></div> <div>Create an alert that is triggered to send externally.</div> <div>Create a Dynamics 365 workflow that is triggered to send external notifications.</div> <div>Trigger a Power App embedded within Dynamics 365 to send a survey.</div>
Reach out to the customer for feedback.	<div></div> <div>Use an automatic email from the manager.</div> <div>Use Forms Pro connection.</div> <div>Use an SMS text message.</div>

- A. Mastered  
B. Not Mastered

Answer: A

Explanation:

Direct Delivery Sales Order is delivered.	<div></div> <div>Create an alert that is triggered to send externally.</div> <div>Create a Dynamics 365 workflow that is triggered to send external notifications.</div> <div>Trigger a Power App embedded within Dynamics 365 to send a survey.</div>
Reach out to the customer for feedback.	<div></div> <div>Use an automatic email from the manager.</div> <div>Use Forms Pro connection.</div> <div>Use an SMS text message.</div>

#### NEW QUESTION 390

HOTSPOT - (Topic 2)

You need to configure integration with Excel.

How should you complete the configuration? To answer, select the appropriate options in the answer area.

NOT: Each correct selection is worth one point.

Requirement	Location
Link the Excel add-in to the Dynamics 365 instance.	<div>https://LibertysAos.cloudax.dynamics.com https://Libertys-my.sharepoint.com https://Libertys.visualstudio.com https://Libertys.sharepoint.com</div>
Centrally store the finished templates.	<div>Dynamics 365 Visual Studio OneDrive for Business</div>

- A. Mastered
- B. Not Mastered

Answer: A

Explanation:

Requirement	Location
Link the Excel add-in to the Dynamics 365 instance.	<div>https://LibertysAos.cloudax.dynamics.com https://Libertys-my.sharepoint.com https://Libertys.visualstudio.com https://Libertys.sharepoint.com</div>
Centrally store the finished templates.	<div>Dynamics 365 Visual Studio OneDrive for Business</div>

NEW QUESTION 394

HOTSPOT - (Topic 2)

You need to identify the risk points that ate present one week poor to go live.

Which risk points should you discuss? To answer, select the appropriate options in the answer area.

NOTE Each correct selection is worth one point.

Action	Risk
Receive Production environment instance from Microsoft.	<div>Passing the FastTrack Go Live checklist Data conversion processing time will exceed the planned time window Installing the Dynamics client on the end users computers</div>
Migrate release-configuration database to production.	<div>Receive the production environment instance Properly sizing the application server Cutover activities for migrating data into the new database</div>

- A. Mastered
- B. Not Mastered

Answer: A

Explanation:

Action	Risk
Receive Production environment instance from Microsoft.	<div>Passing the FastTrack Go Live checklist Data conversion processing time will exceed the planned time window Installing the Dynamics client on the end users computers</div>
Migrate release-configuration database to production.	<div>Receive the production environment instance Properly sizing the application server Cutover activities for migrating data into the new database</div>

NEW QUESTION 397

HOTSPOT - (Topic 2)

You need to identify the platform version that Liberty's live instance uses as well as the update version they must use if they continue to delay updates due to reported issues.

Which answers should you give? To answer, select the appropriate options in the answer area.

NOTE: Each correct selection is worth one point.

### Request

### Answer

Platform version for Liberty's live instance

	▼
Update 23	
10.0.5	
Dynamics 365	
Dynamics AX	

Application version that can no longer be delayed

	▼
10.0.8	
Update 34	
10.0.10	
Update 32	

- A. Mastered
- B. Not Mastered

**Answer:** A

**Explanation:**

### Request

### Answer

Platform version for Liberty's live instance

	▼
Update 23	
10.0.5	
Dynamics 365	
Dynamics AX	

Application version that can no longer be delayed

	▼
10.0.8	
Update 34	
10.0.10	
Update 32	

#### NEW QUESTION 398

- (Topic 1)

You need to resolve the contact reassignment issue. What should you search by?

- A. name in the customer master
- B. contact address in the global address book
- C. email address in the person search report
- D. user ID in the global address book
- E. email in the customer and vendor master

**Answer:** A

#### NEW QUESTION 403

DRAG DROP - (Topic 1)

You need to design a business process for the account manager's customer list requirements.

Which three actions you perform in sequence? To answer, move the appropriate actions to the answer area and arrange them in the correct order.

NOTE: Each correct selection is worth one point.



### Answer Area

#### Actions

On the workspace list, hide/remove fields by using **Personalize this form**.

Use the **Export to Excel** functionality on the data in the grid.

Use the **Open in Excel** functionality on the data in the grid.

Add the form to a workspace as a list.

Add the form to a workspace as a **Tile**.

On the workspace list, apply filters for **Advanced filter or sort**.

On the All Customers grid, hide/remove fields via **Personalize this form**.

On the All Customers grid, apply filters for **Advanced filter or sort**.

- A. Mastered
- B. Not Mastered

**Answer:** A

**Explanation:**

### Answer Area

#### Actions

On the workspace list, hide/remove fields by using **Personalize this form**.

Use the **Export to Excel** functionality on the data in the grid.

Use the **Open in Excel** functionality on the data in the grid.

Add the form to a workspace as a list.

Add the form to a workspace as a **Tile**.

On the workspace list, apply filters for **Advanced filter or sort**.

On the All Customers grid, hide/remove fields via **Personalize this form**.

On the All Customers grid, apply filters for **Advanced filter or sort**.

On the All Customers grid, hide/remove fields via **Personalize this form**.

On the All Customers grid, apply filters for **Advanced filter or sort**.

Add the form to a workspace as a list.

#### NEW QUESTION 407

- (Topic 1)

You need to trigger a Flow when a technical service order request is created.

Which three objects can you use? Each correct answer presents a complete solution. NOTE: Each correct selection is worth one point.

- A. Work items
- B. Change-based alerts
- C. Business Events
- D. External feeds
- E. Workflow

**Answer:** BCD

#### NEW QUESTION 410

HOTSPOT - (Topic 1)



You need to address the client's technical support requirements.

Which solutions should you use? To answer, select the appropriate options in the answer area

NOTE: Each correct selection is worth one point.

### Action

### Solution

Look for Microsoft submitted support requests that might match the issue in question.

	▼
Issue Search	
Open work items	
Release Notes	
Support Issues	

Search criteria for the open Microsoft tickets.

	▼
alert notification	
"alert notification"	
alert+notification	
'alert notification'	

Issue status update method.

	▼
Notifications	
Alert Service	
Manage Incidents	
Announcements	

- A. Mastered
- B. Not Mastered

**Answer:** A

**Explanation:**

### Action

### Solution

Look for Microsoft submitted support requests that might match the issue in question.

	▼
Issue Search	
Open work items	
Release Notes	
Support Issues	

Search criteria for the open Microsoft tickets.

	▼
alert notification	
"alert notification"	
alert+notification	
'alert notification'	

Issue status update method.

	▼
Notifications	
Alert Service	
Manage Incidents	
Announcements	

#### NEW QUESTION 411

- (Topic 1)

You need to determine why the sales associate is not able to see Munson's in the search results.

What is the cause of the issue?

- A. The search criteria is searching for only names that are exactly 'pickles'.
- B. The search criteria is only able to search by the shortened search name of the customer.
- C. The search criteria is searching for all customer names that start with 'pickles'.
- D. The search criteria is case sensitive.

**Answer:** C

**Explanation:**

Reference:

<https://docs.microsoft.com/en-us/dynamics365/customer-engagement/basics/search-records>

#### NEW QUESTION 413

- (Topic 1)

You need to configure the system for account representatives.

Which two actions should you perform? Each correct answer presents a partial solution. NOTE: Each correct selection is worth one point.

- A. Recreate the job alert as a change-based alert.
- B. Enable change-based alerts.
- C. Increase the batch job running frequency.
- D. Specify the batch server for the alert notifications job.

**Answer:** AC

#### NEW QUESTION 417

.....

## Relate Links

**100% Pass Your mb-300 Exam with Examible Prep Materials**

<https://www.examible.com/mb-300-exam/>

## Contact us

We are proud of our high-quality customer service, which serves you around the clock 24/7.

Viste - <https://www.examible.com/>