

PL-400 Dumps

Microsoft Power Platform Developer

<https://www.certleader.com/PL-400-dumps.html>



NEW QUESTION 1

DRAG DROP - (Topic 2)

You need to recommend solutions to meet the e-commerce automation requirements.

Which platform tools should you recommend? To answer, drag the appropriate tools to the correct requirements. Each tool may be used once, more than once, or not at all. You may need to drag the split bar between panes or scroll to view content.

NOTE: Each correct selection is worth one point.

Tools	Requirement	Tool
Power Apps		
Logic Apps	Online sales orders	
Power Automate	Customer survey	
Workflow		

- A. Mastered
- B. Not Mastered

Answer: A

Explanation:

Box 1: Logic Apps

Scenario: Ecommerce sales orders must be integrated into Dynamics 365 Finance and then exported to Azure every night.

For integration with Dynamics 365 Logic Apps can be used. It also supports scheduled actions.

For integration with Azure use Logic Apps, instead of Power Automate.

NEW QUESTION 2

- (Topic 2)

You need to ensure that Adventure Works Cycle can track information from visitors to bike fairs.

What should you create?

- A. A workflow in Dynamics 365 Sales Engagement for capabilities leads
- B. A flow to capture customer data from the bike fair Power Apps in SharePoint and create a lead in Microsoft Teams.
- C. A flow that connects with the bike fair Power Apps to create a lead in Dynamic 365 Sales
- D. A Microsoft flow that generates a new customer record in SharePoint

Answer: C

Explanation:

By using a Dynamics 365 connector, you can create flows that initiate when an event occurs in Dynamics 365, or some other service, which then performs an action in Dynamics 365, or some other service.

Reference:

<https://docs.microsoft.com/en-us/power-automate/connection-dynamics365>

NEW QUESTION 3

- (Topic 2)

You need to resolve CustomerB's issues with the check-in application.

Which two options can you use? Each correct answer presents a complete solution.

NOTE: Each correct selection is worth one point.

- A. LookUp to Filter
- B. Filter to LookUp
- C. Search to LookUp
- D. LookUp to Search

Answer: AD

Explanation:

CustomerB reports that the check-in app returned only one search result for their last name, which is not the correct name.

The Filter function finds records in a table that satisfy a formula. Use Filter to find a set of records that match one or more criteria and to discard those that don't.

The LookUp function finds the first record in a table that satisfies a formula. Use LookUp to find a single record that matches one or more criteria.

The Search function finds records in a table that contain a string in one of their columns. Reference:

<https://docs.microsoft.com/en-us/powerapps/maker/canvas-apps/functions/function-filter-lookup>

NEW QUESTION 4

HOTSPOT - (Topic 1)

You need to correct the portal query issues.

Which code should you use? To answer, select the appropriate options in the answer area.

NOTE: Each correct selection is worth one point.

Portal issue	Code change
New registrations	<div>▼</div> <div>GET [Organization URI]/api/data/v9.1/accounts?\$select=name, sport</div> <div>GET [Organization URI]/api/data/v9.1/accounts?\$apply=name, sport</div> <div>GET [Organization URI]/api/data/v9.1/accounts?\$filter=name, sport</div>
All registered users	<div>▼</div> <div>\$apply=groupby(sport ne null)</div> <div>\$filter = name, sport</div> <div>\$orderby = name, sport</div>

- A. Mastered
B. Not Mastered

Answer: A

Explanation:

Scenario: The query for all registered users must return the data categorized by division. Queries must return only the Name and Sport fields. Queries return all fields. The query is as follows:

```
GET [Organization URI]/api/data/v9.1/accounts?
&$orderby=Name, sport
&$filter=sport ne null
```

Box 1: GET ..\$select=name, sport

Use select to return only the Name and Sport fields.

Box 2: \$apply(groupby(sport ne null)) Categorize by division, that is to sports.

NEW QUESTION 5

- (Topic 2)

You need to ensure that Adventure Works Cycles can track information from visitors to bike fairs.

What should you create?

- A. a Power Automate flow that connects with the bike fair Power Apps app to create a lead in Dynamics 365 Sales
B. a Power Automate flow that generates a new customer record in SharePoint.
C. a Power Automate flow to capture customer data from the bike fair Power Apps app in SharePoint and create a lead in Microsoft Teams.
D. a business process flow in Dynamics 365 Sales for capturing leads.

Answer: A

Explanation:

Scenario:

Qualified leads must be collected from local bike fairs.

Adventure Works Cycles uses a Power Apps app for local bike fairs to attract new customers.

By using a Dynamics 365 connector, you can create flows that initiate when an event occurs in Dynamics 365, or some other service, which then performs an action in Dynamics 365, or some other service.

In Power Automate, you can set up automated workflows between your favorite apps and services to synchronize files, get notifications, collect data, and more. Reference:

<https://docs.microsoft.com/en-us/power-automate/connection-dynamics365>

NEW QUESTION 6

- (Topic 1)

You need to add the script for the registration form event handling. Which code segment should you use?

- A. formContext.data.entity.addOnSave(myFunction)
B. formContext.data.addOnLoad(myFunction)
C. formContext.data.removeOnLoad(myFunction)
D. addOnPreProcessStatusChange
E. formContext.data.isValid()

Answer: B

Explanation:

Scenario: Information about upcoming tournaments must be pre-located into the registration form when the registration form loads.

addOnLoad adds event handlers to the Subgrid OnLoad event event. Reference:

<https://docs.microsoft.com/en-us/powerapps/developer/model-driven-apps/clientapi/reference/grids/gridcontrol/addonload>

NEW QUESTION 7

HOTSPOT - (Topic 2)

You need to select the visualization component.

What should you use? To answer, select the appropriate options in the answer area. NOTE: Each correct selection is worth one point.

Requirement	Component
Mailing list opt-in/opt-out	<div><div></div><div>Flip switch</div><div>Linear gauge</div><div>Radial knob</div><div>Linear slider</div></div>
Number of store visits	<div><div></div><div>Linear gauge</div><div>Flip switch</div><div>Pen control</div><div>Input mask</div></div>
Purpose of visit	<div><div></div><div>Linear gauge</div><div>Flip switch</div><div>Radial knob</div><div>Option set</div></div>

- A. Mastered
- B. Not Mastered

Answer: A

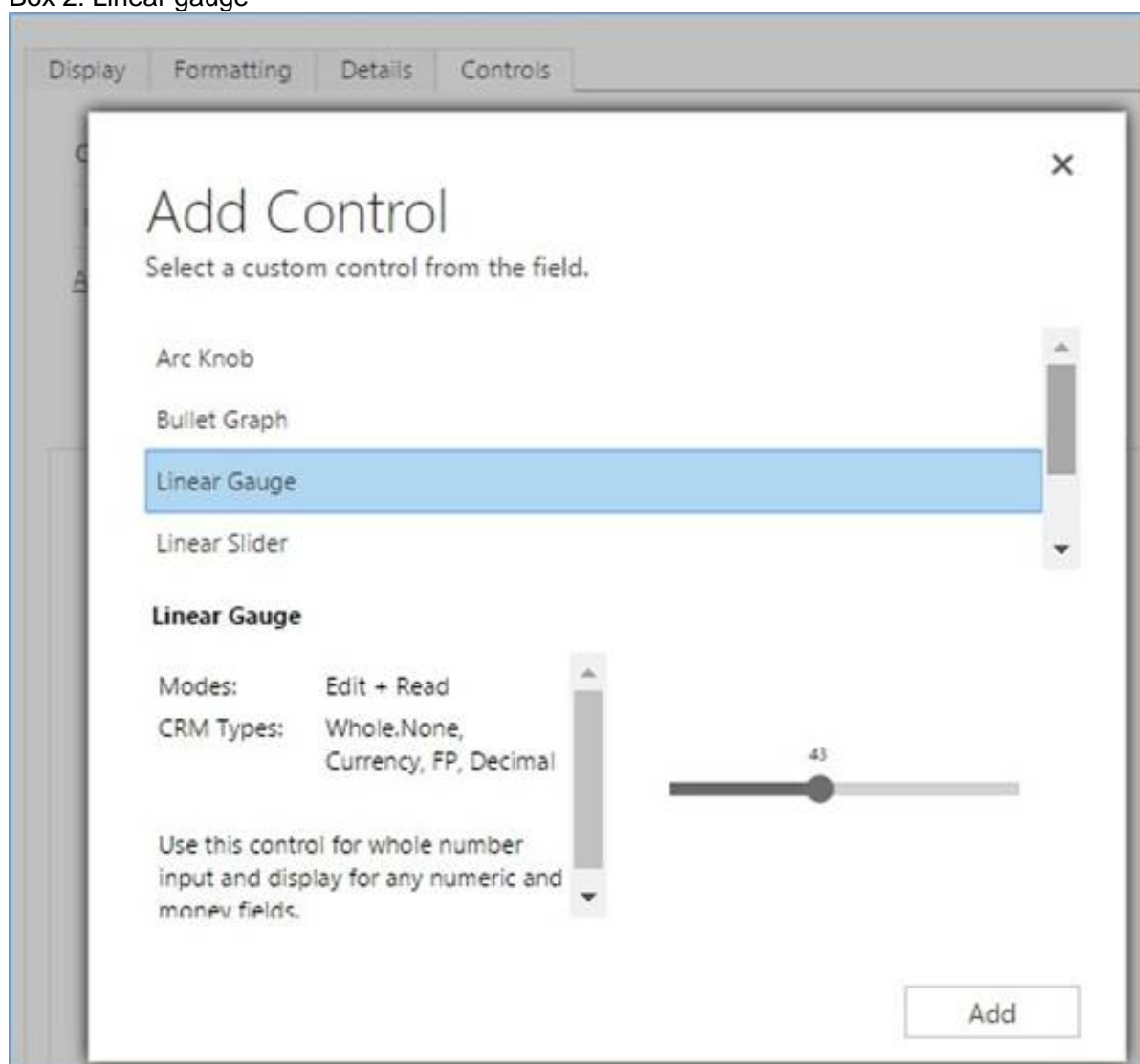
Explanation:

Box 1: Flip switch

The Field Type to use Flip Switch would be ‘Two options’.

If you go by UI perspective, Flip switch control- Yes/No (Boolean) options would give the nice field look in the web, mobile app and Tablet. Instead of using check boxes and radio buttons, this control adds a visual effect like the On/Off switch way.

Box 2: Linear gauge



Box 3: Option Set

Option sets are the ideal choice for offering users a list of defined options for a field selection.

NEW QUESTION 8

- (Topic 3)

You need to configure the trigger for the priority field in the Account entity. Which expression should you use?

- A. DIFFINWEEKS(now,1)
- B. SUBTRACTDAYS(10, Now())
- C. ADDWEEKS(1, CreatedOn)
- D. DIFFINDAYS(Createdon, now())
- E. ADDDDAYS(10, CreatedOn)

Answer: C

Explanation:

A trigger must be created that changes the Priority field to 1 in the Account record 10 days after an Account record is created.

Note:

Date.AddWeeks returns the date, datetime, or datetimezone result from adding numberOfWeeks weeks to the datetime value dateTime.

CreatedOn gets the value to store in the history table indicating when this entry was created.

Reference:

<https://docs.microsoft.com/en-us/powerquery-m/date-addweeks> <https://docs.microsoft.com/en-us/dotnet/api/system.data.entity.migrations.model.inserthistoryoperation.createdon?view=entity-framework-4.3.1>

<https://docs.microsoft.com/en-us/dotnet/api/system.data.entity.migrations.model.inserthistoryoperation.createdon?view=entity-framework-4.3.1>

<https://docs.microsoft.com/en-us/dotnet/api/system.data.entity.migrations.model.inserthistoryoperation.createdon?view=entity-framework-4.3.1>

NEW QUESTION 9

- (Topic 3)

You need to create the model-driven app for referral. Which function should you add?

- A. Flow
- B. Workflow
- C. Business rule
- D. Chart
- E. Subgrid

Answer: C

Explanation:

Scenario: When the account is entered into the system, extra fields must appear if the referral customer box is selected. If the box is not selected, the extra fields must not appear.

NEW QUESTION 10

HOTSPOT - (Topic 3)

You need to synchronize pharmacy names and ensure that Dynamics 365 Sales data propagates correctly to the Cerner system.

What should you do? To answer, select the appropriate options in the answer area.

NOTE: Each correct selection is worth one point.

Requirement	Action
Synchronize pharmacy names.	<div> <div></div> <div> Use a Data integration template in Power Apps. Create a workflow in Dynamics 365 Sales. Export data from Dynamics 365 Sales to Microsoft Excel. Create a data policy in Dynamics 365 Sales. </div> </div>
Propagate data to the Cerner system.	<div> <div></div> <div> Manually enter data. Create a workflow in Dynamics 365 Sales. Export data from Dynamics 365 Sales to Microsoft Excel. Create a custom connector in Power Apps. </div> </div>

- A. Mastered
- B. Not Mastered

Answer: A

Explanation:

Box 1: Use a Data Integration template in Power Apps.

Ensure that the names of the pharmacies are synced between the accounting and the customer management systems.

Note: The Data Integrator (for Admins) is a point-to-point integration service used to integrate data into Dataverse. It supports integrating data between Finance and Operations apps and Dataverse. It also supports integrating data into Finance and Operations apps and Dynamics 365 Sales.

The Data Integrator (for Admins) consists of the Data Integration platform, out-of-the-box templates provided by our application teams (for example, Finance and Operations apps and Dynamics 365 Sales) and custom templates created by our customers and partners.

Box 2: Create a workflow in Dynamics 365 Sales.

Account numbers should be entered automatically into the pharmaceutical system that is in a Cerner database and kept in sync.

Note: Start When: Use the options in this section to specify when a workflow should start automatically. You can configure a real-time workflow to be run before certain events. This is a very powerful capability because the workflow can stop the action before it occurs. The options are:

- ? Record is created
- ? Record status changes
- ? Record is assigned
- ? Record fields change
- ? Record is deleted

NEW QUESTION 10

- (Topic 3)

You need to create the model driven app for accounts designated as referrals. What should you add to the app?

- A. Workflow
- B. Subgrid
- C. Business rule
- D. Flow
- E. Chart

Answer: E

Explanation:

When the account is entered into the system, extra fields must appear if the referral customer box is selected. If the box is not selected, the extra fields must not appear.

Note: By combining conditions and actions, you can do any of the following with business rules:

- ? Set column values
- ? Clear column values
- ? Set column requirement levels
- ? Show or hide columns
- ? Enable or disable columns
- ? Validate data and show error messages
- ? Create business recommendations based on business intelligence.

Reference:

<https://docs.microsoft.com/en-us/powerapps/maker/data-platform/data-platform-create-business-rule>

NEW QUESTION 12

HOTSPOT - (Topic 4)

You need to implement ribbon display rules to control availability for the scoring command button. Which rule types should you use? To answer, select the appropriate options in the answer area. NOTE: Each correct selection is worth one point.

Answer Area

Condition	Rule type
Configure button visibility for recruiters.	<div>CustomRule ▼</div> <div>CustomRule</div> <div>EntityPrivilegeRule</div> <div>EntityPropertyRule</div>
Configure visibility for the button based on the mode for the form.	<div>FormStateRule ▼</div> <div>FormTypeRule</div> <div>FormStateRule</div> <div>FormEntityContextRule</div>

- A. Mastered
- B. Not Mastered

Answer: A

Explanation:

Answer Area

Condition	Rule type
Configure button visibility for recruiters.	<div>CustomRule ▼</div> <div>CustomRule</div> <div>EntityPrivilegeRule</div> <div>EntityPropertyRule</div>
Configure visibility for the button based on the mode for the form.	<div>FormStateRule ▼</div> <div>FormTypeRule</div> <div>FormStateRule</div> <div>FormEntityContextRule</div>

NEW QUESTION 13

- (Topic 4)

You need to determine the cause for the issue reported by the interviewers. What is the root cause of the issue?

- A. The plug-in used to synchronize the Person of Interest field from Contact to Interview was not triggered.
- B. There was an error in the event pipeline and the entire transaction was rolled back.
- C. There is no plug-in registered to run when an interview record is created.

Answer: C

NEW QUESTION 18

- (Topic 5)

You need to determine which component to add to the solution to resolve the account records import error. Which component should you add?

- A. connection
- B. service endpoint
- C. custom connector
- D. Account table

Answer: B

NEW QUESTION 20

- (Topic 6)

A manufacturing company uses a Common Data Service (CDS) environment to manage their parts inventory across two warehouses modeled as business units and named WH1 and WH2.

Data from the two warehouses is processed separately for each part that has its inventory quantities updates.

The company must automate this process, pushing inventory updates from orders submitted to the warehouses.

You need to build the automation using Power Automate flows against the CDS database. You must achieve this goal by using the least amount of administrative effort.

Which flow or flows should you recommend?

- A. Two automated flows with scope Business Unit, with triggers on Create/Update/Delete on orders.
- B. Two automated flows with scope Business Unit, with triggers on Create/Update/Delete and each flow filtering updates from each business unit.
- C. Two scheduled flows, each querying and updating the parts included in orders from each business unit.
- D. One scheduled flow, querying the parts included in orders in both business units.
- E. One automated flow, querying the orders in both business units.
- F. Two scheduled flows, each querying the orders from each business unit.
- G. Two automated flows with scope Organization, with triggers on Create/Update/Delete and filters on WH1 and WH2.
- H. Two automated flow with scope Business Unit, with triggers on Create/Update/Delete on orders and filters on WH1 and WH2.

Answer: H

Explanation:

With the Common Data Service connector, you can create Power Automate flows that are initiated by create and update events within Dataverse. Additionally, you can perform create, update, retrieve, and delete actions on records within Dataverse.

You can use scopes to determine if your flow runs if you create a new record, if a new record is created by a user within your business unit, or if a new record is created by any user in your organization.

Reference:

<https://docs.microsoft.com/en-us/power-automate/connection-cds>

NEW QUESTION 21


DRAG DROP - (Topic 6)

The engineering team in a company uses a SharePoint list to manage critical technical issues that are raised by clients. Other departments do not have access to this list. Departments use their own apps for their own processes.

All departments must be able to see the total number of client issues at any point in time. You need to design a component that can be used in all the departmental apps to display

the total number of client issues in bold colors.

Which four actions should you perform in sequence? To answer, move the appropriate actions from the list of actions to the answer area and arrange them in the correct order.

Actions	Answer area
Create a connection to the engineering issues list and retrieve the total number of critical issues.	
Create an output parameter and set the value of the parameter to the total number of critical issues.	
Create and format a label to display the total number of critical issues.	
Import the counter component in the other apps from the first department app.	
Display the counter output parameter in the department app.	
Create a new component in the department app.	

- A. Mastered
- B. Not Mastered

Answer: A

Explanation:

To design a component that can be used in all the departmental apps to display the total number of client issues in bold colors, you should perform the following four actions in sequence:

- ? Create a connection to the engineering issues list and retrieve the total number of critical issues.
- ? Create an output parameter and set the value of the parameter to the total number of critical issues.
- ? Create a new component in the first department app.
- ? Create and format a label to display the total number of critical issues, and display the counter output parameter in the department app.

NEW QUESTION 22

DRAG DROP - (Topic 6)

You are creating a Power Apps connector between Dynamics 365 Sales and Stack

You must generate a Slack notification whenever a new product is added to Dynamics 365 Sales. You must not be required to sign in directly into Dynamics 365 Sales to generate notifications. You created a Power Apps connector between Dynamics 365 Sales in Slack to enable this to happen.

You need to configure the appropriate security for each scenario? Which security components should you configure?

NOTE: Each correct selection is worth one point.

Components		Requirement	Component
OAuth		Ensure Dynamics 365 security is in place.	
Security roles		Capture application usage from public site.	
API key		Configure a website login that does not need encryption.	
Basic authentication			

- A. Mastered
- B. Not Mastered

Answer: A

Explanation:

Components		Requirement	Component
OAuth		Ensure Dynamics 365 security is in place.	Security roles
Security roles		Capture application usage from public site.	OAuth
API key		Configure a website login that does not need encryption.	Basic authentication
Basic authentication			

NEW QUESTION 25

- (Topic 6)

You create a cloud flow to process a list of records using a loop.

You need to determine when to initialize a variable that is used to process the records. When should you initialize the variable?

- A. after the first use of the variable inside the loop
- B. after the loop
- C. before the loop
- D. before the first use of the variable inside the loop

Answer: C

NEW QUESTION 26

- (Topic 6)

A financial institution that has a Dynamics 365 Customer Engagement environment requires that the account balance field from the account entity be visible to specific users only.

You need to set up the field security for the account balance field.

Which three actions should you perform? Each correct answer presents part of the solution.

NOTE: Each correct selection is worth one point.

- A. Create a field security profile.
- B. Set the field to Read-Only and then publish the entity.
- C. Create a security role and add the specific users to the role.
- D. Enable field security and then publish the entity.
- E. Set the field permission Allow Read to Yes and add the users to the members section.

Answer: ADE

Explanation:

To implement field-level security, a system administrator performs the following tasks.

? Enable field security on one or more fields for a given entity.

? Associate one more existing security profiles, or create one or more new security profiles to grant the appropriate access to specific users or teams.

A security profile determines the following:

? Permissions to the secure fields

? Users and Teams

A security profile can be configured to grant user or team members the following permissions at the field level:

? Read. Read-only access to the field's data.

? Create. Users or teams in this profile can add data to this field when creating a record.

? Update. Users or teams in this profile can update the field's data after it has been created.

Reference:

<https://docs.microsoft.com/en-us/power-platform/admin/field-level-security>

NEW QUESTION 31

DRAG DROP - (Topic 6)

You are developing a new Power Apps Component Framework (PCF) control.

The control must be deployed to a development environment by using the Power Apps CLI and a new solution.
You need to deploy the PCF control.
Which four actions should you perform in sequence? To answer, move all actions from the list of actions to the answer area and arrange them in the correct order.

Actions

Add a solution reference to the project.

Build the project and solution.

Create a solution.

Deploy the solution.

Answer area

⬅

➡

⬆

⬆

- A. Mastered
- B. Not Mastered

Answer: A

Explanation:

Step 1: Create a solution
Create a new solutions project using the following command. The solution project is used for bundling the code component into a solution zip file that is used for importing into Dataverse.
pac solution init --publisher-name developer --publisher-prefix dev
Step 2: Add a solution reference to the project
Once the new solution project is created, refer the Solutions folder to the location where the created sample component is located. You can add the reference using the command shown below. This reference informs the solution project about which code components should be added during the build. You can add references to multiple components in a single solution project.
pac solution add-reference --path c:\downloads\mysamplecomponent
Step 3: Build the project and solution
To generate a zip file from the solution project, go into your solution project directory and build the project using the following command.
msbuild /t:build /restore
Step 4: Deploy the solution

NEW QUESTION 33

HOTSPOT - (Topic 6)
A company delivers packages to businesses and consumers. A custom entity named Package captures the package details.
You need to add the following sets of fields to the entity and leverage the built-in operations of the platform:
? A set of fields to represent the package length, width, depth, and weight. The maximum value for any dimension is 100 centimeters.
? A set of fields for time-sensitive attributes to calculate the efficiency of a delivery based on when the delivery is entered in the system and the existing custom fields: Pickup time and Delivery time.
Which constructs should you use? To answer, select the appropriate options in the answer area.
NOTE: Each correct selection is worth one point.

Requirement

Calculate the efficiency of the delivery.

Construct

DIFFINMINUTES(Created On, Modified On)

DIFFINMINUTES(Created On, Delivery Time)

DIFFINHOURS(Created On, Modified On)

DIFFINHOURS(Created On, Delivery Time)

Autonumber

Phone number

Customer

Currency

Duration

- A. Mastered
- B. Not Mastered

Answer: A

Explanation:

Box 1: DIFFINMINUTES(Created on, Delivery Time)
DIFFINMINUTES (date and time, date and time) returns the difference in minutes between two Date and Time columns.
Box 2: Duration

NEW QUESTION 36

- (Topic 6)
A multinational company requires that all phone numbers be standardized as country code + area code + phone number.

The application design team decides that a custom PowerApps component framework (PCF) control should be used to prompt users for an area code and correctly format the phone number.
You need to get the list of valid area codes when a contact record is opened and before the user enters a new phone number.
In which function should you call `webAPI.retrieveMultipleRecords`?

- A. `notifyOutputChanged`
- B. `init`
- C. `getOutputs`
- D. `updateView`

Answer: D

Explanation:

The `updateView` method will be called when any value in the property bag has changed. This includes field values, data-sets, global values such as container height and width, offline status, component metadata values such as label, visible, etc.
Set the value of the field component to the raw value from the configured field. Note: `webAPI.retrieveMultipleRecords` retrieves a collection of entity records.
Reference:
<https://docs.microsoft.com/en-us/powerapps/developer/component-framework/reference/control/updateview>

NEW QUESTION 38

DRAG DROP - (Topic 6)

You are creating a flow using the Common Data Service (CDS) connector. You need to select the appropriate triggers.
Which triggers should you use? To answer, drag the appropriate triggers to the correct scenarios. Each trigger may be used once, more than once, or not at all.
You may need to drag the split bar between panes or scroll to view content.
NOTE: Each correct selection is worth one point.

Triggers	Answer Area	
	Scenario	Trigger
Record creation	Choose accounts that are in the USA and send those account contacts an email.	Trigger
Record selection	Contacts that have not been modified in 60 days should no longer be in the system.	Trigger
Record deletion	An area code has been mistyped in all records.	Trigger
Record update		

- A. Mastered
- B. Not Mastered

Answer: A

Explanation:

Triggers	Answer Area	
	Scenario	Trigger
Record creation	Choose accounts that are in the USA and send those account contacts an email.	Record selection
Record selection	Contacts that have not been modified in 60 days should no longer be in the system.	Record deletion
Record deletion	An area code has been mistyped in all records.	Record update
Record update		

NEW QUESTION 43

- (Topic 6)

You are creating a new page for a Power Apps portal.
You need to display data from Microsoft Dataverse on the page. What should you use?

- A. Liquid
- B. CSS
- C. iFrame
- D. Bootstrap

Answer: A

Explanation:

Liquid is an open-source template language that is integrated natively into Microsoft Power Apps portals. It acts as a bridge between Dataverse and the HTML or text output that is sent to the browser. Liquid can be used to add dynamic content to pages and to create a variety of custom templates. Additionally, Liquid provides access only to the data and operations that are explicitly allowed by the portals.
Reference:
<https://docs.microsoft.com/en-us/learn/modules/liquid-template-language/>

NEW QUESTION 48

HOTSPOT - (Topic 6)

An organization has a custom Assignments entity that guides agent actions. Team leaders for each assignment group must be able to review any changes made to assignment data by their agents.

You have the following JSON segment:

```
{
  "@odata.context": "https://orgxyz.api.crm3.dynamics.com/api/data/v9.1/$metadata#xyz_assignments(xyz_assignmentname,xyz_secretcode)",
  "@odata.deltaLink": "https://orgxyz.api.crm3.dynamics.com/api/data/v9.1/xyz_assignments?$select=xyz_assignmentname,xyz_secretcode&$deltatoken=652832%2107%2f20%2f2020%2017%3a21%3013",
  "value": [
    {
      "@odata.etag": "W/\"652815\"",
      "xyz_assignmentname": "spy007",
      "xyz_secretcode": "abc",
      "xyz_assignmentid": "a278f39e-a7ca-ea11-a812-000d3af45c52"
    },
    {
      "@odata.etag": "W/\"652816\"",
      "xyz_assignmentname": "agent007",
      "xyz_secretcode": "123",
      "xyz_assignmentid": "1e110eac-a7ca-ea11-a812-000d3af45c52"
    }
  ]
}
```

For each of the following statements, select Yes if the statement is true. Otherwise, select No.

NOTE: Each correct selection is worth one point.

	Yes	No
You can use the JSON segment to retrieve a list of changes to the assignment records referenced in the segment.	<input type="radio"/>	<input type="radio"/>
You can use the data link to query the assignment changes from the last 30 days.	<input type="radio"/>	<input type="radio"/>
You can use the data link with a \$filter option to retrieve assignment changes from the last 30 days.	<input type="radio"/>	<input type="radio"/>
Is the delta link token valid?	<input type="radio"/>	<input type="radio"/>

- A. Mastered
B. Not Mastered

Answer: A

Explanation:

Box 1: Yes

Delta query lets you query for additions, deletions, or updates to users, by way of a series of delta function calls. Delta query enables you discover changes to users without having to fetch the entire set of users from Microsoft Graph and compare changes.

Box 2: No

Tracking user changes

Tracking user changes is a round of one or more GET requests with the delta function. You make a GET request much like the way you list users, except that you include the following:

The delta function.

A state token (deltaToken or skipToken) from the previous GET delta function call.

Delta tokens are only valid for a specific period before the client application needs to run a full synchronization again. For directory objects (application, administrativeUnit,

directoryObject, directoryRole, group, orgContact, oauth2permissiongrant, servicePrincipal, and user), the limit is 7 days.

Box 3: No

There is limited support for \$filter:

The only supported \$filter expression is for tracking changes on a specific object:

\$filter=id+eq+{value}. Box 4: Yes

NEW QUESTION 53

DRAG DROP - (Topic 6)

An organization has a Dynamics 365 Sales environment. In the development environment, you create a business rule named BusinessRule1 on the Account entity. You deploy BusinessRule1 to production as part of a managed solution.

You need to remove BusinessRule1 from the production environment.

Which three actions should you perform in sequence? To answer, move the appropriate actions from the list of actions to the answer area and arrange them in the correct order.

Actions

In the development environment, navigate to Solutions.

Create a new managed solution in the production environment.

Export the solution as managed and import it in the production environment.

In the production environment, add a new business rule.

Select the solution that has BusinessRule1 and deactivate the rule.

Select the solution that has BusinessRule1, navigate to the appropriate entity, and delete the rule.

Answer Area

⏪

⏩

⏮

⏭

- A. Mastered
- B. Not Mastered

Answer: A

Explanation:

Step 1: In the development environment, navigate to Solutions.
The only supported way of transferring customizations from one CRM organization to another has been through Solutions. With Solution Management came the concept of Managed and Unmanaged Solutions.
Step 2: Export the solution as managed and import it in the production environment. Managed is a way to protect your IP (Intellectual Property) with an easy concept of install and uninstall.
Step 3: Select the solution that has BusinessRule1, navigate to the appropriate entity, and delete the rule.

NEW QUESTION 58

HOTSPOT - (Topic 6)
You create a Power Platform solution to track purchasing requirements for bills of material (BOMs) and their subcomponents. The solution must meet the following requirements:
? Ensure that the BOMs are enabled to include the necessary subcomponents.
? Report changes to the BOMs or their sub-components that are made by engineers.
You need to configure the solution.
What should you do to meet each requirement? To answer, select the appropriate options in the answer area.
NOTE: Each correct selection is worth one point.

Requirement

Action

Ensure the BOMs can include necessary subcomponents.

Configure entity relationships.

Configure Quick View.

Configure environment variables.

Report who changed the BOM records and when the changes were made.

Configure entity change tracking.

Configure entity auditing.

Configure environment variables.

- A. Mastered
- B. Not Mastered

Answer: A

Explanation:

Box 1: Configure entity relationship Box 2: Configure entity change tracking
The change tracking feature in Microsoft Dataverse provides a way to keep the data synchronized in an efficient manner by detecting what data has changed since the data was initially extracted or last synchronized. Previously, without this new feature, it was difficult to build a reliable and efficient mechanism to determine what records had changed in Dataverse.

NEW QUESTION 60

HOTSPOT - (Topic 6)
The following code updates the customer size code choice column on the Account table if the number of employees column value is greater than 100. Line numbering is provided for information only.


```
01 static void UpdateAccount(CrmServiceClient svc, string accountId)
02 {
03     using (svc)
04     {
05         var account = svc.Retrieve("account", accountId, new ColumnSet(true));
06
07         var numberOfemployees = account.GetAttributeValue<int>("numberOfemployees");
08         if (numberOfemployees > 100)
09         {
10             account["customersizecode"] = new OptionSetValue(2);
11             svc.Update(account);
12         }
13     }
14 }
```

For each of the following statements, select Yes if the statement is true. Otherwise, select No.

Statement	Yes	No
Does the Retrieve method use the correct parameters?	<input type="radio"/>	<input type="radio"/>
Will a plug-in triggered on the update of the numberOfemployees column execute after the Update method is executed?	<input type="radio"/>	<input type="radio"/>
Will an exception be thrown if the value for numberOfemployees is null?	<input type="radio"/>	<input type="radio"/>

- A. Mastered
- B. Not Mastered

Answer: A

Explanation:

Statement	Yes	No
Does the Retrieve method use the correct parameters?	<input checked="" type="radio"/>	<input type="radio"/>
Will a plug-in triggered on the update of the numberOfemployees column execute after the Update method is executed?	<input type="radio"/>	<input checked="" type="radio"/>
Will an exception be thrown if the value for numberOfemployees is null?	<input type="radio"/>	<input checked="" type="radio"/>

NEW QUESTION 62

- (Topic 6)
You are creating a Power Automate flow.
You create an Azure Service Bus listener app that receives requests from a third-party application.
When the flow calls the message queue, it must delete the message as soon as it is read. You need to ensure that the queue is cleared properly.
Which method or class should you use?

- A. ReceiveMode
- B. BrokeredMessage
- C. EventHubReceiver
- D. EventHubSender

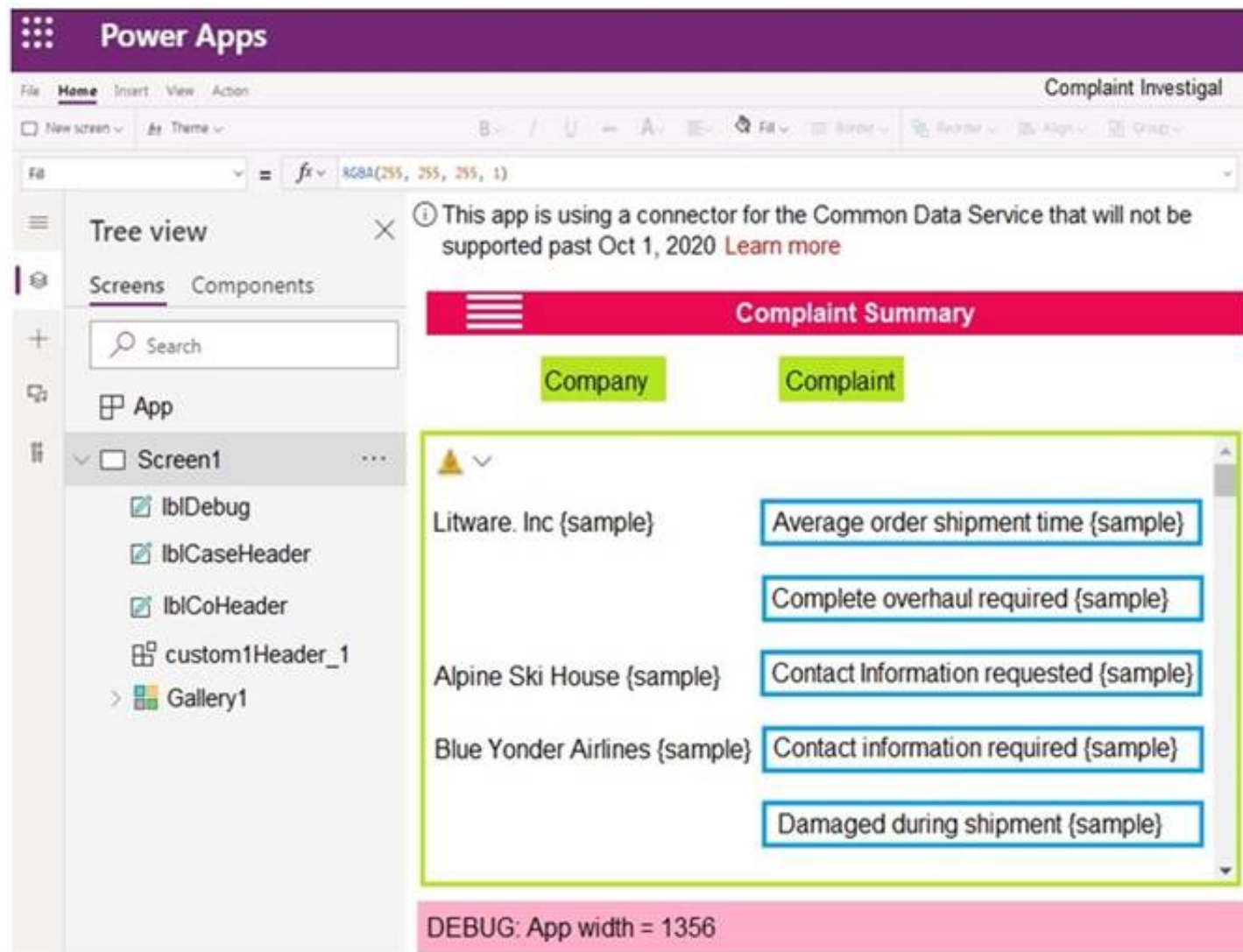
Answer: A

Explanation:

ReceiveMode enumerates the values for the receive mode. The default is PeekLock. Fields:
PeekLock: Specifies the PeekLock receive mode. This is the default value for ReceiveMode.
ReceiveAndDelete: Specifies the ReceiveAndDelete receive mode.
Note: You can specify two different modes in which Service Bus receives messages. Receive and delete. In this mode, when Service Bus receives the request from the consumer, it marks the message as being consumed and returns it to the consumer application.
Peek lock.
Reference:
<https://docs.microsoft.com/en-us/azure/service-bus-messaging/service-bus-queues-topics-subscriptions>
<https://docs.microsoft.com/en-us/dotnet/api/microsoft.servicebus.messaging.receivemode>

NEW QUESTION 65

HOTSPOT - (Topic 6)
You open a canvas app in edit mode. A warning message displays as shown in the graphic.



Use the drop-down menus to select the answer choice that answers each question based on the information presented in the graphic.
NOTE: Each correct selection is worth one point.

You need to troubleshoot the warning. What should you do?

▼

Navigate to Solution checker and view results.
Navigate to App checker and expand the Formulas section.
Navigate to Advanced Tools and open the Monitor.
Navigate to Connections and add a new connection.

Which component should you troubleshoot?

▼

App
Screen1
customHeader_1
Gallery1

- A. Mastered
- B. Not Mastered

Answer: A

Explanation:

Box 1: Navigate to Connections and add a new connection

Error message: This app is using a connector for the Common Data Service will not be supported past Oct 1, 2020.

To convert your app that uses the Common Data Service 365 connector, you'll need to remove and add the connections to your data sources.

Box 2: Gallery1

NEW QUESTION 68

HOTSPOT - (Topic 6)

A training company implements a Common Data Service (CDS) environment. The company has created and stores information about courses in a custom entity.

A Power Automate flow must be created whether a course has been created that starts within the next seven days and must be accurate to the minute.

You need to define an expression that meets the requirements.

Which functions should you use for the expression? To answer, select the appropriate options in the answer area.

NOTE: Each correct selection is worth one point.

Answer Area

▼

(

less

ticks

triggerBody

getFutureTime

▼

(formatDateTime (

less

ticks

triggerBody

getFutureTime

▼

() ? ['new coursedate'],

'yyyy-MM-ddTHH:MM:ssZ')) ,

▼

(

less

ticks

triggerBody

getFutureTime

▼

(7, 'Day'))

)

- A. Mastered
B. Not Mastered

Answer: A

Explanation:

Box 1: less

less checks whether the first value is less than the second value. Return true when the first value is less, or return false when the first value is more.

Box 2 : ticks

ticks(timestamp: string) - Returns the number of ticks (100 nanoseconds interval) since 1 Jan 1601 00:00:00 UT

Syntax: ticks('<timestamp>')

Box 3: triggerBody

triggerBody returns a trigger's body output at runtime. Box 4: ticks

Box 5: getFutureTime

getFutureTime return the current timestamp plus the specified time units. Syntax: getFutureTime(<interval>, <timeUnit>, <format>?)

NEW QUESTION 70

- (Topic 6)

A company needs to illustrate the relationships of the entities in Dynamics 365 Sales. You need to select the appropriate tool to show this graphic.

Which tool should you select?

- A. Metadata diagram
B. Sales Insights
C. Power Automate
D. Security model

Answer: A

Explanation:

Visual representation of metadata can be useful, especially when you are trying to describe the relationship between entities in the system. You can use the Metadata Diagram sample code provided for Dynamics 365 Customer Engagement (on-premises) to generate the entity relationship diagrams.

You can create a diagram that shows a relationship for just one entity, or a complex diagram that includes dozens of related entities, including custom and system entities.

Reference:

<https://docs.microsoft.com/en-us/dynamics365/customerengagement/on-premises/developer/use-metadata-generate-entity-diagrams>

NEW QUESTION 75

HOTSPOT - (Topic 6)

A company has a canvas app that has a screen with a gallery of contacts.

Users must be able to search the gallery by last name, email address, and country/region. They must also be able to sort by last name, followed by country/region.

You need to define the expression that meets the requirements.

How should you complete the expression? To answer, select the appropriate options from the answer area.

NOTE: Each correct selection is worth one point.

Answer Area

Sort
Filter
StartsWith
SortByColumns

Search
Filter
LookUp
SortByColumns

```
Contacts,
TextSearchBox1.Text,
"lastname",
"emailaddress1",
"address1_country"
),
"lastname",
Ascending,
"address1_country",
Ascending
)
```

- A. Mastered
B. Not Mastered

Answer: A

Explanation:

Box 1: SortByColumns

The SortByColumns function can be used to sort a table based on one or more columns.

The parameter list for SortByColumns provides the names of the columns to sort by and the sort direction per column. Sorting is performed in the order of the parameters (sorted first by the first column, then the second, and so on).

Box 2: Filter

The Filter function finds records in a table that satisfy a formula. Use Filter to find a set of records that match one or more criteria and to discard those that don't.

NEW QUESTION 79

DRAG DROP - (Topic 6)

A company uses Dynamics 365 Sales.

Sales commission must be calculated when an order is placed. You create an Azure Function to perform the calculation. The Azure Function has an HTTP trigger. You need to configure the Plug-in Registration tool to send data to the Azure Function when an order is placed. You open the Plug-in Registration tool and connect to Dynamics 365 Sales.

Which three actions should you perform in sequence? To answer, move the appropriate actions from the list of actions to the answer area and arrange them in the correct order.

Actions

Select Register New Web Hook.

Select Register New Service Endpoint.

Set authentication to HttpHeader.

Register a New Step for Create of SalesOrder.

Enter a connection string.

Enter the endpoint URL.

Answer Area



- A. Mastered
B. Not Mastered

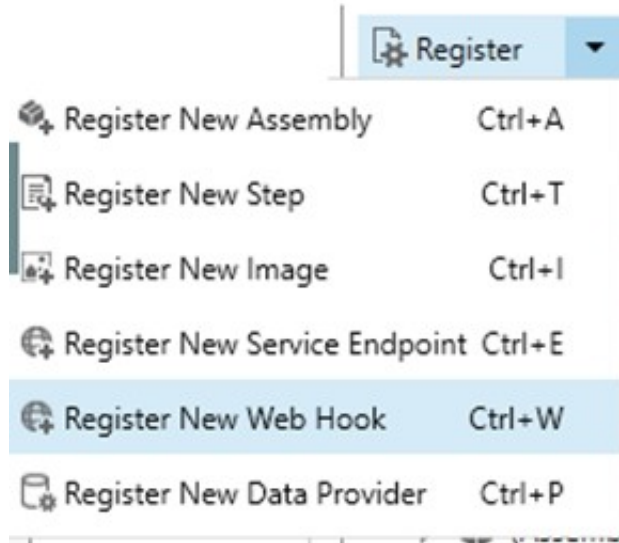
Answer: A

Explanation:

Step 1:SelectRegister New Web Hook.

Configure Dynamics 365 Sales to Call Your Webhook in Azure Functions

- * 1. Open the Plug-in Registration Tool and connect to your organization.
- * 2. Select Register->Register New Web Hook



Step 2: Enter the endpoint URL

Step 3: Register a New Step for Create of SalesOrder.

Register a new webhook, and then tie that webhook to an event in Dynamics 365 Sales. Select your newly registered webhook, right-click it, and then choose "Register New Step."

Note that the webhook here is set to execute whenever a change to an account record is detected within Dynamics 365 Sales.

NEW QUESTION 81

HOTSPOT - (Topic 6)

You need to use the Dynamics 365 Sales Web API to retrieve metadata information.

How should you complete the Web API queries? To answer, select the appropriate options in the answer area.

NOTE: Each correct selection is worth one point.

Answer Area

Metadata item	Web API query
Entity	<div>GET /api/data/v9.0/EntityDefinitions(<div><div></div><div>▼</div></div> = 'account') <div><div>Name</div><div>EntityName</div><div>LogicalName</div><div>SchemaName</div></div></div>
Attribute	<div>GET /api/data/v9.0/EntityDefinitions(<div><div></div><div>▼</div></div> = 'account')/Attributes(LogicalName=telephone1) <div><div>Name</div><div>LogicalName</div><div>SchemaName</div><div>AttributeName</div></div></div>
Relationship	<div>GET /api/data/v9.0/RelationshipDefinitions(<div><div></div><div>▼</div></div> = 'Account_Tasks') <div><div>Name</div><div>LogicalName</div><div>SchemaName</div><div>RelationshipName</div></div></div>
Global Option Set	<div>GET /api/data/v9.0/GlobalOptionSetDefinitions(<div><div></div><div>▼</div></div> = 'metric_goaltype') <div><div>Name</div><div>LogicalName</div><div>SchemaName</div><div>AttributeName</div></div></div>

- A. Mastered
- B. Not Mastered

Answer: A

Explanation:

Entity: LogicalName
Querying the EntityMetadata entity type:
GET [Organization URI]/api/data/v9.0/EntityDefinitions(LogicalName='account')
Attribute: LogicalName Retrieving attributes:
GET [Organization URI]/api/data/v9.0/EntityDefinitions(LogicalName='account')/Attributes(
Relationship: SchemaName Querying relationship metadata:
Entity relationships can also be queried using the RelationshipDefinitions entity set. You can use a query like the following to get the SchemaName property for every relationship.
GET [Organization URI]/api/data/v9.0/RelationshipDefinitions?\$select=SchemaName
Global Option Set: Name Querying Global OptionSets:
GET /api/data/v9.0/GlobalOptionSetDefinitions(Name='metric_goaltype')
Note: Retrieving items by name is generally easier because you probably already have some reference to the metadata item name in your code. The following table lists the alternate key properties for retrieving metadata items by name.

Metadata item	Alternate Key	Example
Entity	LogicalName	GET /api/data/v9.0/EntityDefinitions(LogicalName='account')
Attribute	LogicalName	GET /api/data/v9.0/EntityDefinitions(LogicalName='account')/Attributes(LogicalName='emailaddress1')
Relationship	SchemaName	GET /api/data/v9.0/RelationshipDefinitions(SchemaName='Account_Tasks')
Global Option Set	Name	GET /api/data/v9.0/GlobalOptionSetDefinitions(Name='metric_goaltype')

NEW QUESTION 84

DRAG DROP - (Topic 6)
You are creating a model-driven app.
Users need to see only the entities in the app navigation that are relevant to their role and their method of accessing the app.
You need to restrict entities on the sub-areas in the SiteMap.
Which properties should you use? To answer, drag the appropriate properties to the correct requirements. Each property may be used once, more than once, or not at all. You may need to drag the split bar between panes or scroll to view content.
NOTE: Each correct selection is worth one point.

Answer Area

Properties	Requirement	Property
Client	Ensure that the entity is visible only if the user can create records.	
Offline Availability	Ensure that the entity is not visible if the user is using an on-premises deployment.	
Privileges	Ensure that the entity is visible only if the user is accessing the app with a web browser.	
SKUs		

- A. Mastered
B. Not Mastered

Answer: A

Explanation:

Box 1: Privileges

Privileges: This defines whether a subarea is displayed based on privileges available in any security roles that are assigned to the user.

Box 2: SKU

SKUs: Select the versions of Dynamics 365 that display this subarea.

Box 3: Client

Client: Select the type of client that displays this subarea.

NEW QUESTION 89

HOTSPOT - (Topic 6)

You are developing an app for a sales team to record contact details in their Common Data Service (CDS) database.

The app must handle loss of network and save the data to CDS when reconnected.

The main screen of the app has a form to collect contact data and a button. The OnSelect property for the button has the following expression:

```
1. If (  
2. Connection.Connected,  
3. Path(  
4. Contacts,  
5. Defaults(Contacts),  
6. {  
7. 'First Name': DataCardValue_FirstName.Text, 'Last Name': DataCardValue_LastName.Text  
8. }  
9. );  
10. Navigate(ConfirmationScreen,ScreenTransition.Fade)  
11. ,  
12. ClearCollect(  
13. LocalRecord,  
14. {  
15. 'First Name': DataCardValue_FirstName.Text, 'Last Name': DataCardValue_LastName.Text  
16. }  
17. );  
18. SaveData(LocalRecord, "LocalRecord");  
19. Navigate(PendingScreen,ScreenTransition.Fade)  
20. )
```

For each of the following statements, select Yes if the statement is true. Otherwise, select No.

NOTE: Each correct selection is worth one point.

Statements	Yes	No
The expression saves the data to CDS when reconnecting after losing network connection.	<input type="radio"/>	<input type="radio"/>
The collection contains all contacts not saved to CDS.	<input type="radio"/>	<input type="radio"/>
The expression updates existing contacts in CDS.	<input type="radio"/>	<input type="radio"/>
The expression handles loss of connection to CDS.	<input type="radio"/>	<input type="radio"/>

- A. Mastered
B. Not Mastered

Answer: A

Explanation:

Box 1: Yes

LoadData and SaveData combine to form a simple mechanism to store small amounts of data on a local device. By using these functions, you can add simple offline capabilities to your app.

Box 2: No

Box 3: No

Box 4: Yes

NEW QUESTION 90

- (Topic 6)

Note: This question is part of a series of questions that present the same scenario. Each question in the series contains a unique solution that might meet the stated goals. Some question sets might have more than one correct solution, while others might not have a correct solution.

After you answer a question in this section, you will NOT be able to return to it. As a result, these questions will not appear in the review screen.

You are designing a one-way integration from the Common Data Service to another system.

You must use an Azure Function to update the other system. The integration must send only newly created records to the other system. The solution must support scenarios where a component of the integration is unavailable for more than a few seconds to avoid data loss.

You need to design the integration solution.

Solution: Register a service endpoint in the Common Data Service that connects to an Azure Service Bus queue.

Register a step at the endpoint which runs asynchronously on the record's Create message and in the portoperation stage.

Configure the Azure Function to process records as they are added to the queue. Does the solution meet the goal?

A. Yes

B. No

Answer: A

Explanation:

Microsoft Dataverse supports integration with Azure.

For the Dataverse and Azure connection to work, there must be at least one solution in an Azure Service Bus solution account, where the solution contains one or more service endpoints.

For a queue endpoint contract, a listener doesn't have to be actively listening. Reference:

<https://docs.microsoft.com/en-us/powerapps/developer/common-data-service/azure-integration>

NEW QUESTION 95

HOTSPOT - (Topic 6)

You are troubleshooting Power Apps solutions.

You need to determine the cause for the identified issues.

What is the root cause for each issue? To answer, select the appropriate options in the answer area.

NOTE: Each correct selection is worth one point.

Issue	Reason
Solution checker does not complete a run for one solution but works for a different solution.	<div> <div></div> <div> A canvas app in the first solution has errors. The Power Apps checker application user is disabled. </div> </div>
You encounter an error on line three of a web resource as shown below:	<div> <div></div> <div> The code uses the following rule: web-avoid-eval The code uses the following rule: web-remove-debug-script The code uses the following rule: web-avoid-modals The code uses the following rule: web-use-strict-mode. </div> </div>

```
var acctnumber = formContext.getAttribute
("accountnumber").getValue();
if (acctnumber == 'abc')
```

A. Mastered

B. Not Mastered

Answer: A

Explanation:

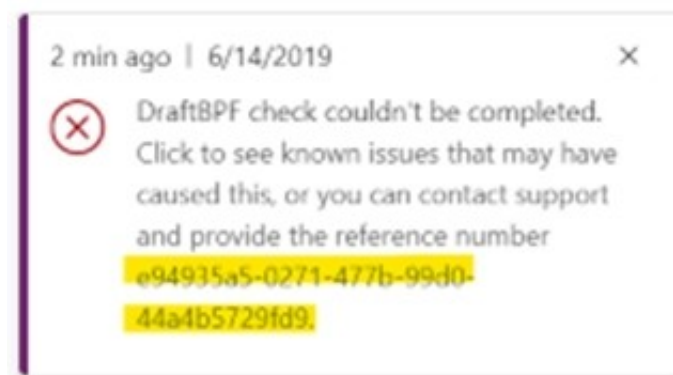
Box 1: A canvas app in the first solution has errors.

Failures that occur during background processing of the analysis will fail with 'Couldn't be completed' status and return an error message in the Power Apps portal as well as send email notification to the requestor.

Solutions

Display name	Created ↓	Version	Managed externally?	Solution check
Draft BPF	6/14/2019	1.0.0.0		Couldn't be completed

Selecting the portal notification will link to this page of common issues for further troubleshooting. If one of the provided common issues does not resolve the problem, a reference number is also returned. Provide this reference number to Microsoft Support for further investigation.



Box 2: The code uses the following rule: web-use-strict-mode
web-use-strict-mode is able to throw a SyntaxError before the script is executing.

Example:

The reason is JavaScript lets you compare different variable types but this can have unexpected results, so by using the strict === it compares the same type and won't have unexpected results

this gets a warning entity.field == "Line1"

NEW QUESTION 100

- (Topic 6)

A company implements Dynamics 365 Sales.

An email notification must be sent automatically to the sales manager when a business process completes.

You need to ensure that emails are sent.

What should you create on the process completed trigger?

- A. a workflow
- B. an action step
- C. a data step
- D. a Power Automate flow step

Answer: A

Explanation:

When you include a workflow that you want to trigger on Stage Exit of a stage in your business process flow, and that stage is the last stage in the flow, the designer gives the impression that the workflow will be triggered when that stage is completed. Reference:

<https://docs.microsoft.com/en-us/dynamics365/customerengagement/on-premises/customize/businessprocess-flows-overview>

NEW QUESTION 101

- (Topic 6)

You have the following code:

```
Xrm.WebApi.createRecord("account", data).then(
    function success(result) {
        console.log("Success");
    },
    function (error) {
        console.log(error.message);
    }
);
```

You have a contact record that uses the GUID 2CFB1599-DEAD-425F-AB4A-76E6CAB51B09.

You need to assign the contact record as the primary contact for an account when you create the account.

Which two code segments can you use? Each correct answer presents a complete solution.

NOTE: Each correct selection is worth one point.

- A.

```
var data =
{
    "name": "Contoso account",
    "primarycontactid@odata.context": "/contacts(2CFB1599-DEAD-425F-AB4A-76E6CAB51B09)"
};
```
- B.

```
var data =
{
    "name": "Contoso account",
    "primarycontactid":
    {
        "logicalname": "contact",
        "id": "2CFB1599-DEAD-425F-AB4A-76E6CAB51B09"
    }
};
```
- C.

```
var data =
{
    "name": "Contoso account",
    "primarycontactid@odata.bind": "/contacts(2CFB1599-DEAD-425F-AB4A-76E6CAB51B09)"
};
```
- D.

```
var data =
{
    "name": "Contoso account",
    "primarycontactid": "/contacts(2CFB1599-DEAD-425F-AB4A-76E6CAB51B09)"
};
```

- A. Option A
- B. Option B
- C. Option C
- D. Option D

Answer: BC

NEW QUESTION 102

HOTSPOT - (Topic 6)

A company has a model-driven app that captures applications from prospective students. You are asked to create a new re-usable custom component using the Power Apps component framework (PCF). The custom component must allow entry of a date of birth and validate that the applicant is not a minor. You create the class AuditDatePicker in the TypeScript file Index.ts and the style sheet DatePicker.css. You need to define the component to be available only for relevant fields and its properties when used in a form. How should you complete the manifest? To answer, select the appropriate options in the answer area. NOTE: Each correct selection is worth one point.

```
<?xml version= "1.0" encoding= "utf-8"?>
<manifest>
  <control namespace= "delegate" constructor=
    version= "1.0.0" display-name-key= "Date Picker" description-key= "Date of Birth
    Date Picker that validates if a minor" control-type= "standard">
    <property name= "value" display-name-key= "Value" description-key= "Value" of-
    type=
    usage=
    required= "true" />
    <resources>
      <code path= "Index.ts" order= "1"/>
      <css path= "css/DatePicker.css" order= "1" />
    </resources>
    </control>
  </manifest>
```

- A. Mastered
- B. Not Mastered

Answer: A

Explanation:

Box 1: AuditDatePicker
Constructor: Constructor of the code component. Box 2:DateandTime.DateOnly
Box 3: bound
usage: Has two properties, bound and input. Bound properties are bound only to the value of the field. Input properties are either bound to a field or allow a static value.

NEW QUESTION 106

HOTSPOT - (Topic 6)

You are developing a model-driven app by using Microsoft Power Platform. The app must perform the following functions:

- Automatically receive updates from a purchase order system.
- Only add new purchase orders. You need to implement the app.

Which components should you use? To answer, select the appropriate options in the answer area. NOTE: Each correct selection is worth one point

Requirement	Component
Automatically receive purchase order updates.	<div>Connector with polling trigger</div> <div>Connector with webhook trigger</div> <div>Triggers for scheduled flows</div>
Add new purchase orders.	<div>Creation date</div> <div>Account name</div> <div>Creation date</div> <div>Account number</div> <div>Purchase order amount</div>

- A. Mastered
- B. Not Mastered

Answer: A

Explanation:

Answer Area

Requirement

Automatically receive purchase order updates.

Add new purchase orders.

Component

Connector with polling trigger	▼
Connector with polling trigger	
Connector with webhook trigger	
Triggers for scheduled flows	
Creation date	▼
Account name	
Creation date	
Account number	
Purchase order amount	

NEW QUESTION 111

HOTSPOT - (Topic 6)

You develop the following JavaScript code for a web resource that will be used in a model- driven app.

```
function CheckAccountRating(executionContext) {
    var formContext = executionContext.getFormContext();
    var baseUrl = Xrm.Utility.getGlobalContext();
    var id = formContext.data.entity.getId();
    var url = baseUrl + "/api/data/v9.1/accounts(" + id + ")?$select=accountratingcode"

    var req = new XMLHttpRequest();
    req.open("GET", url, false);
    req.setRequestHeader("OData-MaxVersion", "4.0");
    req.setRequestHeader("OData-Version", "4.0");
    req.setRequestHeader("Accept", "application/json");
    req.setRequestHeader("Content-Type", "application/json; charset=utf-8");
    req.onreadystatechange = function () {
        if (this.readyState === 4) {
            req.onreadystatechange = null;
            if (this.status === 200) {
                var result = JSON.parse(this.response);
                if (result["accountratingcode"] == 4) {
                    alert("Test");
                }
            }
        }
    };
    req.send();
}
```

For each of the following statements, select Yes if the statement is true. Otherwise, select No.

NOTE: Each correct selection is worth one point.

	Yes	No
The code raises the following exception: Interact with HTTP and HTTPS resources asynchronously (web-use-async).	<input type="radio"/>	<input type="radio"/>
The code raises the following exception: Use strict equality operators (web-use-strict-equality-operators).	<input type="radio"/>	<input type="radio"/>
The code raises the following exception: Avoid including debug script in non-development environments (web-remove-debug-script).	<input type="radio"/>	<input type="radio"/>

- A. Mastered
B. Not Mastered

Answer: A

Explanation:

Box 1: Yes

Problem patterns: Web-use-async

There are multiple ways to interact with the server or request resources. Common approaches that allow for synchronous communications include the following (These scenarios should be avoided.):

? Usage of the XMLHttpRequest object passing in false for the value of the async parameter for the open function call var requestXhr = new XMLHttpRequest();

// Explicitly setting the async parameter to false or supplying a variable with a value of false will force this as a synchronous call. requestXhr.open('GET', '/test/test.txt', false);

Box 2: No

=== - Strict Equality Comparison is already used in the code.

Box 3: No

No debugger statement in the code, so web-remove-debug-script (avoid including debug script in non-development environments) does not apply.

NEW QUESTION 113

- (Topic 6)

A company implements Dynamics 365 Customer Service. The company deploys synchronous plug-ins for the PreOperation and PostOperation stages on create and for the PostOperation stage on update for processing different case type.

Users experience errors when updating cases. The plug-in trace log files show that the PostOperation plug-in update of case times out after two minutes.

You perform basic testing and discover that this plug-in is triggered on every update of a case. You examine the code and discover that the plug-in retrieves all columns for the updated case record performing its work.

You need to reduce the number of errors. You need to achieve this goal with the test amount of changes.

Solution:

* In the Plug-in Registration tool, add a post Image to the plug-in step and include the Fields that the plug-in needs.

* Remove the retrieves statement from the plug-in code and reference the post image. Does the solution meet the goal?

A. Yes

B. No

Answer: A

NEW QUESTION 117

HOTSPOT - (Topic 6)

You need to correct the JavaScript code that communicates with the address verification API.

For each of the following statements, select Yes if the statement is true. Otherwise, select No.

NOTE: Each correct selection is worth one point.

Answer Area

Statements	Yes	No
You must replace ACTIONNAME in line AV22 with northwind_ValidateAddress	<input type="radio"/>	<input type="radio"/>
You can add code at line AV28 to display an error message returned by the address validation API.	<input type="radio"/>	<input type="radio"/>
Calling the address validation API from the custom action eliminates the error reported by users.	<input type="radio"/>	<input type="radio"/>

A. Mastered

B. Not Mastered

Answer: A

Explanation:

YES, YES, NO

NEW QUESTION 119

- (Topic 6)

You are designing a one-way integration from Microsoft Dataverse to another system.

You must use an Azure Function to update the other system. The integration must send only newly created records to the other system. The solution must support scenarios where a component of the integration is unavailable for more than a few seconds to avoid data loss.

You need to design the integration solution.

Solution: Register a service endpoint in the Dataverse instance that connects to an Azure Service Bus queue.

Register a step at the endpoint which runs asynchronously on the record's Create message and in the post-operation stage.

Configure the Azure Function to process records as they are added to the queue. Does the solution meet the goal?

A. Yes

B. No

Answer: B

NEW QUESTION 122

HOTSPOT - (Topic 6)

You are developing a Web API for a company.

You need to implement the appropriate operations to meet the company's requirements. What should you implement? To answer, select the appropriate options in the answer area. NOTE: Each correct selection is worth one point.

Requirement	Operation
Implement operations that do not have side effects and may support further composition	<div><div></div><div>Functions</div><div>Actions</div><div>Entities</div></div>
Implement operations that allow side effects, such as data modification	<div><div></div><div>Functions</div><div>Actions</div><div>Entities</div></div>
Implement keyless named structured types that consist of a set of properties	<div><div></div><div>Complex types</div><div>Entity types</div><div>Enumeration types</div></div>

- A. Mastered
B. Not Mastered

Answer: A

Explanation:

Box 1: Functions

Box 2: Actions

Box 3: Complex types

Complex types are keyless named structured types consisting of a set of properties. Complex types are commonly used as property values in model entities, or as parameters or return values for operations.

NEW QUESTION 124

- (Topic 6)

Note: This question is part of a series of questions that present the same scenario. Each question in the series contains a unique solution that might meet the stated goals. Some question sets might have more than one correct solution, while others might not have a correct solution.

After you answer a question in this section, you will NOT be able to return to it. As a result, these questions will not appear in the review screen.

You are developing a model-driven app for a company.

When you create a new Account record, you must automatically display a form to collect data that is needed to create a Contact record. The form must switch to the appropriate form layout based on the contact type.

You open the Contact form by using JavaScript. You pass the contact type information to the form by using the `Xrm.Navigation.openForm` function. An `OnLoad` event handler in the Contact form processes the data and shows only the appropriate sections of the form for the given contact type.

You need to configure the receiving form to accept the data parameter. Solution: In the form editor, add an event handler for the data parameter. Does the solution meet the goal?

- A. Yes
B. No

Answer: B

Explanation:

By default, model-driven apps allows a specified set of query string parameters to be passed to a form. You use these parameters to set default values when you create a new record in the application. Each parameter must use a standard naming convention that includes a reference to the column logical name.

There are two ways to specify which query string parameters will be accepted by the form:

? Edit form properties

? Edit form XML

Reference:

<https://docs.microsoft.com/en-us/powerapps/developer/model-driven-apps/configure-form-accept-custom-querystring-parameters>

NEW QUESTION 129

- (Topic 6)

A company manages capital equipment for an electric utility company. The company has a SQL Server database that contains maintenance records for the equipment.

Technicians who service the equipment use the Dynamics 365 Field Service mobile app on tablet devices to view scheduled assignments. Technicians use a canvas app to display the maintenance history for each piece of equipment and update the history.

Managers use a Power BI dashboard that displays Dynamics 365 Field Service and real- time maintenance data.

Due to increasing demand, managers must be able to work in the field as technicians. You need to design a solution that allows the managers to work from one single screen. What should you do?

- A. Add the maintenance history app to the Field Service Mobile app.
- B. Add the manager Power BI dashboard to the Field Service mobile app.
- C. Create a new maintenance canvas app from within the Power BI management dashboard.
- D. Add the maintenance history app to the Power BI dashboard.

Answer: D

Explanation:

Power BI enables data insights and better decision-making, while Power Apps enables everyone to build and use apps that connect to business data. Using the Power Apps visual, you can pass context-aware data to a canvas app, which updates in real time as you make changes to your report. Now, your app users can derive business insights and take actions from right within their Power BI reports and dashboards.

Reference:

<https://docs.microsoft.com/en-us/powerapps/maker/canvas-apps/powerapps-custom-visual>

NEW QUESTION 130

- (Topic 6)

You are implementing custom business logic in a Power Apps portal. You need to use Liquid templates to display dynamic content.

To which three entities can you include Liquid code? Each correct answer presents a complete solution.

NOTE: Each correct selection is worth one point.

- A. Content snippet
- B. Web page
- C. Web template
- D. Page template
- E. Portal settings

Answer: BCD

Explanation:

Liquid is an open-source template language integrated into portals. It can be used to add dynamic content to pages, and to create a wide variety of custom templates. Using Liquid, you can:

? Add dynamic content directly to the Copy field of a webpage or the content of a content snippet.

? Store source content by using web templates, entirely through configuration within Power Apps, for use throughout the Power Apps portals content management system.

? Render a website header and primary navigation bar, entirely through configuration within Power Apps.

Note: page is one of the available liquid objects. Reference:

<https://docs.microsoft.com/en-us/powerapps/maker/portals/liquid/liquid-overview>

<https://docs.microsoft.com/en-us/powerapps/maker/portals/liquid/liquid-objects#page>

NEW QUESTION 135

- (Topic 6)

A company is creating a Power Apps portal to collaborate with vendors.

You need to implement custom functionality in the portal by using JavaScript code.

Which two portal entities can you use? Each correct answer presents a complete solution.

NOTE: Each correct selection is worth one point.

- A. Web pages
- B. Web resources
- C. Webforms
- D. Entity lists

Answer: CD

Explanation:

C: The Web Form Step record contains a field named Custom JavaScript that can be used to store JavaScript code to allow you to extend or modify the form's visual display or function.

D: You can add custom Javascripts to Entity lists. Reference:

<https://docs.microsoft.com/en-us/powerapps/maker/portals/configure/add-custom-javascript> <https://docs.microsoft.com/en-us/powerapps/maker/portals/configure/entity-lists#add-custom-javascript>

NEW QUESTION 136

HOTSPOT - (Topic 6)

A school district wants to standardize student information and student performance records. Students in the district are assigned to a specific school. Students are evaluated using class records.

When students move between schools in the middle of a school year, the student's current class history must be available to the administrators at the new school.

You need to configure Microsoft Dataverse tables to connect the class history records to their respective class records.

How should you configure the table? To answer, select the appropriate options in the answer area.

NOTE: Each correct selection is worth one point.

Configuration setting	Value
Table ownership for the class record table.	<div><div></div><div>Organization</div><div>User</div><div>User or Team</div><div>Team</div></div>
Relationship of the class history table to the student table.	<div><div></div><div>Many-to-one</div><div>One-to-many</div><div>Many-to-many</div></div>
Behavior of the relationship between the class history table and the student table.	<div><div></div><div>Parental</div><div>Referential</div><div>Custom</div></div>

- A. Mastered
B. Not Mastered

Answer: A

Explanation:

Box 1: Team

'the student's current class history must be available to the administrators at the new school.'

Box 2: Many-to-one

Box 3: Parental

The N:1 (many-to-one) relationship type exists in the user interface because the designer shows you a view grouped by tables. 1:N relationships actually exist between tables and refer to each table as either a Primary/Current table or Related table. The related table, sometimes called the child table, has a lookup column that allows storing a reference to a row from the primary table, sometimes called the parent table. A N:1 relationship is just a 1:N relationship viewed from the related table.

NEW QUESTION 141

HOTSPOT - (Topic 6)

You develop the following code as part of an OnSave event handler in a form.

```
01  executionContext.getEventArgs().preventDefault();
02
03  var isOnHold = false;
04  Xrm.WebApi.retrieveRecord("account", id, "?$select=credithold").then(
05      function (result) {
06          isOnHold = result["credithold"];
07      }
08  );
09
10  if (isOnHold) {
11      Xrm.Navigation.openConfirmDialog({ text: 'Credit Hold - Save OK?' }).then(
12          function (success) {
13              if (success.confirmed) {
14                  formContext.data.save();
15              }
16          });
17  }
```

For each of the following statements, select Yes if the statement is true. Otherwise, select No.

NOTE: Each correct selection is worth one point.

Statement	Yes	No
The code cancels the normal save operation of the form.	<input type="radio"/>	<input type="radio"/>
A confirmation dialog box is displayed if the credithold value is true.	<input type="radio"/>	<input type="radio"/>
The record will save if the credithold value is false.	<input type="radio"/>	<input type="radio"/>

- A. Mastered
B. Not Mastered

Answer: A

Explanation:
Answer Area

Statement	Yes	No
The code cancels the normal save operation of the form.	<input checked="" type="radio"/>	<input type="radio"/>
A confirmation dialog box is displayed if the creditonhold value is true.	<input checked="" type="radio"/>	<input type="radio"/>
The record will save if the creditonhold value is false.	<input type="radio"/>	<input checked="" type="radio"/>

NEW QUESTION 144

- (Topic 6)

A company develops a new Microsoft Dataverse plug-in that manages the Update message of an entity. The plug-in logic requires access to the record columns before the operation starts and must compare the columns to post-update values. You need to modify the design of the solution to access the information. What should you do?

- A. Add the code to the plug-in to read the record from the InputParameters collection.
- B. Register a pre-image by using the Plug-in Registration Too
- C. Add the code to the plug-in to read the image from the PreEntityImages collection.
- D. Register a post-image by using the Plug-in Registration Too
- E. Add the code to the plug- in to read the image from the PostEntityImages collection.
- F. Add the code to the plug-in to query the data from Dataverse by using the API call based on the record ID.

Answer: B

NEW QUESTION 148

HOTSPOT - (Topic 6)

You are creating a package for a Power Platform solution. The package will include custom code and sample data. The package must include all files that need to be installed. You need to configure the package. Which setting should you use? To answer, select the appropriate options in the answer area.
NOTE: Each correct selection is worth one point.

Configuration option

Value

File that you must edit to include custom code.

PackageTemplate.cs

ImportConfig.xml

CRMSDKTemplates.vsix

ComplexImportDetail.log

File to edit to include sample data.

CRMSDKTemplates.vsix

<Solutionpackagefilename>.zip

ImportConfig.xml

PackageTemplate.cs

Value for the Copy to Output Directory setting.

Copy Always

Do Not Copy

Copy If Newer

Empty

- A. Mastered
- B. Not Mastered

Answer: A

Explanation:

Box 1: PackageTemplate.cs

Define custom code for your package in the PackageTemplate.cs file. Box 2: ImportConfig.xml

The sample data and some flat files for solutions specified in the ImportConfig.xml file are imported before the solution import completes.

Box 3: Copy Always

Set the Copy to Output Directory value to Copy Always. This ensures that your file is available in the generated package.

NEW QUESTION 152

DRAG DROP - (Topic 6)

You have several model-driven apps.

You must ensure that app creators and system administrators can customize the apps. You must follow the principle of least privilege.

You need to assign the permissions that are needed for app creators and system administrators.

Which security roles should you assign? To answer, drag the appropriate roles to the correct requirements. Each role may be used once, more than once, or not at all. You may need to drag the split bar between panes or scroll to view content.

NOTE: Each correct selection is worth one point

Roles	Requirement	Role
System Administrator only	Create customizations in the system	
System Customizer only	View all system data entities	
	View all data stored in system entities	

- A. Mastered
B. Not Mastered

Answer: A

Explanation:

Customizer, customizer, admin
System Administrator has Organization level access to all system (Out Of Box) entities while System Customizer has only User level access to all system entities. While both System Administrator and System Customizer have Organization level access to all custom entities.

NEW QUESTION 153

DRAG DROP - (Topic 6)

A company has Common Data Service (CDS) environments for development, test, and production. You have a model-driven app that consists of two solutions. The solutions include settings and reference data. You plan to move the solutions, app settings, and reference data from a development environment to a production environment. You export each solution from the development environment as a zip file. You run the Configuration Manager to export the settings and reference data as zip files. You need to prepare the app and its settings for deployment. Which four actions should you perform in sequence? To answer, move the appropriate actions from the list of actions to the answer area and arrange them in the correct order.
NOTE: More than one order of answer choices is correct. You will receive credit for any of the correct orders you select.

Actions

Add solution and data files to the PkgFolder in the project

Build the package

Run the Package Deployer tool

Define the solution and data files in ImportConfig.xml

Run the Solution Packager tool

Create a Dynamics 365 Package project in Visual Studio

Answer Area

>

<

↑

↓

- A. Mastered
B. Not Mastered

Answer: A

Explanation:

Step 1: Add your files to the project
In the Solutions Explorer pane, add your solutions and files under the PkgFolder folder. For each file that you add under the PkgFolder folder, in the Properties pane, set the Copy to Output Directory value to Copy Always. This ensures that your file is available in the generated package.
Step 2: Define the solution and data files in ImportConfig.xml
Define the package configuration by adding information about your package in the ImportConfig.xml file available in the PkgFolder.
Step 3: Build the package
Step: Run the Package Deployer tool
After you create a package, you can deploy it on the Dataverse instance by using either the Package Deployer tool or Windows PowerShell.

NEW QUESTION 156

DRAG DROP - (Topic 6)

You are developing a Power Platform solution. You must add a custom control slider to a specific step in a business process flow. You need to add the custom control. Which four actions should you perform in sequence? To answer, move the appropriate actions from the list of actions to the answer area and arrange them in the correct order.

Action	Answer area
Import customizations into the Microsoft Dataverse environment.	
Modify columns in the default solution.	
Create a Power Automate flow to activate the custom controls.	
Generate and export the business process flow form.	
Configure custom controls on a related entity form.	
Copy custom control configurations to the FormXML for the business process flow.	

- A. Mastered
- B. Not Mastered

Answer: A

Explanation:

Here are the steps you must follow to add custom controls to a business process flow: Step 1: Configure custom controls on a related entity. Step 2: Generate and exporting the business process flow form. Step 3: Copy custom control configurations to the FormXML for the business process flow. Step 4: Import customizations into the Microsoft Dataverse environment.

Note:

- ? Configure custom controls on a related table form.
- ? Generate and exporting the business process flow form.
- ? Copy custom control configurations to the business process flow form from the related table form.
- ? Import the customizations back into Microsoft Dataverse.

NEW QUESTION 159

HOTSPOT - (Topic 6)

You are a Power Apps app maker with administrative rights to Microsoft 365. You create a canvas app that will be used by employees at your company. You plan to allow users to embed the app in Microsoft Teams. During testing, the following issues are reported:

- ? The app runs slowly when it runs in Microsoft Teams.
- ? Test users cannot add the personal app within Microsoft Teams.

You need to resolve the issues.

What should you do? To answer, select the appropriate options in the answer area.

NOTE: Each correct selection is worth one point.

Issue	Resolution
The app runs slowly when it runs in Microsoft Teams.	<div>▼</div> <div>Change settings in app to preload app Use a Teams integration object</div>
Test users cannot add the personal app within Microsoft Teams.	<div>▼</div> <div>Download the custom app Change permission for the custom app in Teams Publish the customer app Change custom app setup policy in Tems</div>

- A. Mastered
- B. Not Mastered

Answer: A

Explanation:

Box 1: Change settings in app to preload app
You can optionally preload your app within Teams to increase performance.

Box 2: Change the permission for the custom app in Teams
As an admin, you can use app permission policies to control what apps are available to Microsoft Teams users in your organization. You can allow or block all apps or specific apps published by Microsoft, third-parties, and your organization. When you block an app, users who have the policy are unable to install it from the Teams app store.

You manage app permission policies in the Microsoft Teams admin center. You can use the global (Org-wide default) policy or create and assign custom policies. Users in your organization will automatically get the global policy unless you create and assign a custom policy. After you edit or assign a policy, it can take a few hours for changes to take effect.

Global

Description

Microsoft apps

Choose which Teams apps published by Microsoft or its partners can be installed by your users.

✔ Allow all apps

Third-party apps

Choose which Teams apps published by a third-party that can be installed by your users.

✔ Allow all apps

Custom apps

Choose which custom apps can be installed by your users.

✔ Allow all apps

Save

Cancel

NEW QUESTION 160

HOTSPOT - (Topic 6)

An online store has a custom web page that allows customers to place their orders against a Microsoft Dataverse database that uses custom products. The custom web page uses Web API patterns to create and update records.

Customers report that orders can be placed for out-of-stock items.

You need to update the page code to ensure that inventory is available before confirming an order.

Which pattern should you use for each step? To answer, select the appropriate options in the answer area.

NOTE: Each correct selection is worth one point.

Step	Pattern
Check the inventory table before retrieving the inventory record.	<div>▼</div> <div>ChangeTrackingEnabled</div> <div>DaysSinceRecordLastModified</div> <div>IsOptimisticConcurrencyEnabled</div>
Update the quantity on the inventory record using PATCH.	<div>▼</div> <div>If-Match: *</div> <div>If-Match: Etag</div> <div>If-None-Match: *</div> <div>If-None-Match: Etag</div>

- A. Mastered
B. Not Mastered

Answer: A

Explanation:

Box 1: IsOptimisticConcurrencyEnabled

On a multi-threaded and multi-user system like Power Apps, operations and data changes often happen in parallel. A problem arises when two or more update or delete operations on the same piece of data happen at the same time. This situation could potentially result in data loss. The optimistic concurrency feature provides the ability for your applications to detect whether a table record has changed on the server in the time between when your application retrieved the record and when it tries to update or delete that record.

Box 2: If-Match: Etag

Use If-Match and If-None-Match headers with ETag values to check whether the current version of a resource matches the one last retrieved, matches any previous version or matches no version. These comparisons form the basis of conditional operation support. Dataverse provides ETags to support conditional retrievals, optimistic concurrency, and limited upsert operations.

NEW QUESTION 164

- (Topic 6)

You are creating a custom connector in Power Apps to connect to a third-party application. The definition in the connector must be set so that it is not visible to the end user.

You need to select the appropriate visibility parameter. Which parameter should you use?

- A. important

- B. none
- C. internal
- D. advanced

Answer: C

Explanation:

Leave the Visibility property set to none. This property for operations and parameters in a logic app or flow has the following options:

? none: displayed normally in the logic app or flow

? advanced: hidden under an additional menu

? internal: hidden from the user

? important: always shown to the user first

Reference:

<https://docs.microsoft.com/en-us/connectors/custom-connectors/define-blank>

NEW QUESTION 165

DRAG DROP - (Topic 6)

You are creating a model-driven app for users to submit and manage budgets for projects.

You must create a business process flow to ensure any lead with a budget over \$10,000 requires approval by a manager. You must add a custom control that allows users to select the estimated budget cost for a project.

You need to add the control to the business process flow.

in which order should you perform the actions? To answer, move all actions from the list of actions to the answer area and arrange them in the correct order.

Actions	Answer area
Paste control description FormXML into the correct stage of the business process flow in the exported solution.	
Export the business process flow and the Lead form as two separate solutions.	
Copy all control description FormXML from the Lead form of the exported solution.	
Add a control to the Lead form by using the form designer.	
Import the solution into the system and publish.	

- A. Mastered
- B. Not Mastered

Answer: A

Explanation:

Actions	Answer area
Paste control description FormXML into the correct stage of the business process flow in the exported solution.	
Export the business process flow and the Lead form as two separate solutions.	
Copy all control description FormXML from the Lead form of the exported solution.	
Add a control to the Lead form by using the form designer.	
Import the solution into the system and publish.	

NEW QUESTION 168

.....

Thank You for Trying Our Product

* 100% Pass or Money Back

All our products come with a 90-day Money Back Guarantee.

* One year free update

You can enjoy free update one year. 24x7 online support.

* Trusted by Millions

We currently serve more than 30,000,000 customers.

* Shop Securely

All transactions are protected by VeriSign!

100% Pass Your PL-400 Exam with Our Prep Materials Via below:

<https://www.certleader.com/PL-400-dumps.html>