

Fortinet

Exam Questions NSE7_EFW-7.0

Fortinet NSE 7 - Enterprise Firewall 7.0



NEW QUESTION 1

A FortiGate is configured as an explicit web proxy. Clients using this web proxy are reposting DNS errors when accessing any website. The administrator executes the following debug commands and observes that the n-dns-timeout counter is increasing:

```
#diagnose test application wad 2200
#diagnose test application wad 104
DNS Stats:
n_dns_reqs=878  n_dns_fails= 2  n_dns_timeout=875
n_dns_success=0

n_snd_retries=0  n_snd_fails=0 n_snd_success=0 n_dns_overflow=0
n_build_fails=0
```

What should the administrator check to fix the problem?

- A. The connectivity between the FortiGate unit and the DNS server.
- B. The connectivity between the client workstations and the DNS server.
- C. That DNS traffic from client workstations is allowed by the explicit web proxy policies.
- D. That DNS service is enabled in the explicit web proxy interface.

Answer: A

NEW QUESTION 2

View the exhibit, which contains the output of diagnose sys session stat, and then answer the question below.

```
NGFW-1 # diagnose sys session stat
misc info:      session_count=591  setup_rate=0  exp_count=0
clash=162  memory_tension_drop=0  ephemeral=0/65536
removeable=0
delete=0, flush=0, dev_down=0/0
TCP sessions:
    166 in NONE state
    1 in ESTABLISHED state
    3 in SYN_SENT state
    2 in TIME_WAIT state
firewall error stat:
error1=00000000
error2=00000000
error3=00000000
error4=00000000
tt=00000000
cont=00000000
ids_recv=00000000
url_recv=00000000
av_recv=00000000
fqdn_count=00000006
global: ses_limit=0  ses6_limit=0  rt_limit=0  rt6_limit=0
```

Which statements are correct regarding the output shown? (Choose two.)

- A. There are 0 ephemeral sessions.
- B. All the sessions in the session table are TCP sessions.
- C. No sessions have been deleted because of memory pages exhaustion.
- D. There are 166 TCP sessions waiting to complete the three-way handshake.

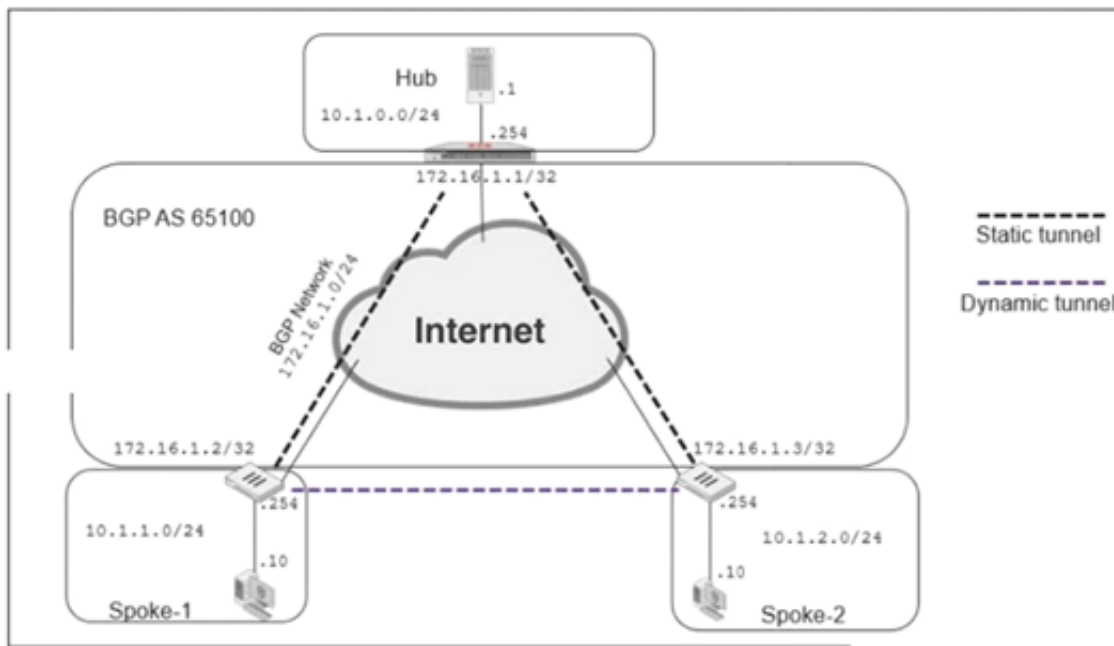
Answer: AC

Explanation:

<https://kb.fortinet.com/kb/documentLink.do?externalID=FD40578>

NEW QUESTION 3

Exhibits:



```

now router bgp
router bgp
  as 65100
  router-id 172.16.1.1
  fig neighbor-group
    edit "advpn"
      set remote-as 65100

      set route-reflector-client disable
    next
  fig neighbor-range
    edit 1
      set prefix 172.16.1.0 255.255.255.0
      set neighbor-group "advpn"
    next

```

Refer to the exhibits, which contain the network topology and BGP configuration for a hub.

An administrator is trying to configure ADVPN with a hub-spoke VPN setup using iBGP. All the VPNs are up and connected to the hub. The hub is receiving route information from both spokes over iBGP; however, the spokes are not receiving route information from each other.

What change must the administrator make to the hub BGP configuration so that the routes learned by one spoke are forwarded to the other spokes?

- A. Configure an individual neighbor and remove neighbor-range configuration.
- B. Configure the hub as a route reflector client.
- C. Change the router id to 10.1.0.254.
- D. Make the configuration of remote-as different from the configuration of local-as.

Answer: B

NEW QUESTION 4

Refer to the exhibit, which contains the partial output of a diagnose command.

```

Spoke-2 # dia vpn tunnel list
list all ipsec tunnel in vd 0

-----

name=VPN ver=1 serial=1 10.200.5.1:0->10.200.4.1:0
bound_if=3 lgwy=static/1 tun=intf/0 mode=auto/1 encap=none/0
proxyid_num=1 child_num=0 refcnt=15 ilast=10 olast=792 auto-discovery=0
stat: rxp=0 txp=0 rxb=0 txb=0
dpd: mode=on-demand on=1 idle=20000ms retry=3 count=0 seqno=0
natt: mode=none draft=0 interval=0 remote_port=0
proxyid=VPN proto=0 sa=1 ref=2 serial=1
  src: 0:10.1.2.0/255.255.255.0:0
  dst: 0:10.1.1.0/255.255.255.0:0
  SA: ref=3 options=2e type=00 soft=0 mtu=1438 expire=42403/0B replaywin=2048 seqno=1 esn=0
replaywin_lastseq=00000000
life: type=01 bytes=0/0 timeout=43177/43200
dec: spi=cccl1f66d esp=aes key=16 280a5cd6f9bacc65ac771556c464ffbd
  ah=sha1 key=20 c68091d68753578785de6a7a6b276b506c527efe
enc: spi=df14200b esp=aes key=16 b02a7e9f5542b69aff6aa391738ee393
  ah=sha1 key=20 889f7529887c215c25950be2ba83e6fela5367be
dec: pkts/bytes=0/0, enc:pkts/bytes=0/0

```

Based on the output, which two statements are correct? (Choose two.)

- A. Anti-replay is enabled
- B. The remote gateway IP is 10.200.4.1.
- C. DPD is disabled.
- D. Quick mode selectors are disabled.

Answer: AB

NEW QUESTION 5

An administrator has enabled HA session synchronization in a HA cluster with two members. Which flag is added to a primary unit's session to indicate that it has been synchronized to the secondary unit?

- A. redir.
- B. dirty.
- C. synced
- D. nds.

Answer: C

Explanation:

The synced sessions have the 'synced' flag. The command 'diag sys session list' can be used to see the sessions on the member, with the associated flags.

NEW QUESTION 6

Examine the following partial output from a sniffer command; then answer the question below.

```
# diagnose sniff packet any 'icmp' 4
interfaces= [any]
filters = [icmp]
2.101199 wan2 in 192.168.1.110-> 4.2.2.2: icmp: echo request
2.101400 wan1 out 172.17.87.16-> 4.2.2.2: icmp: echo request
.....
2.123500 wan2 out 4.2.2.2-> 192.168.1.110: icmp: echo reply
244 packets received by filter
5 packets dropped by kernel
```

What is the meaning of the packets dropped counter at the end of the sniffer?

- A. Number of packets that didn't match the sniffer filter.
- B. Number of total packets dropped by the FortiGate.
- C. Number of packets that matched the sniffer filter and were dropped by the FortiGate.
- D. Number of packets that matched the sniffer filter but could not be captured by the sniffer.

Answer: D

Explanation:

<https://kb.fortinet.com/kb/documentLink.do?externalID=11655>

NEW QUESTION 7

View the exhibit, which contains the partial output of an IKE real-time debug, and then answer the question below.

```
ike 0:c49e59846861b0f6/0000000000000000:278: responder: main mode get 1st message...
ike 0:c49e59846861b0f6/0000000000000000:278: incoming proposal:
ike 0:c49e59846861b0f6/0000000000000000:278: proposal id = 0:
ike 0:c49e59846861b0f6/0000000000000000:278:   protocol id = ISAKMP:
ike 0:c49e59846861b0f6/0000000000000000:278:   trans_id = KEY_IKE.
ike 0:c49e59846861b0f6/0000000000000000:278:   encapsulation = IKE/none
ike 0:c49e59846861b0f6/0000000000000000:278:   type=OAKLEY_ENCRYPT_ALG, val=3DES_CBC.
ike 0:c49e59846861b0f6/0000000000000000:278:   type=OAKLEY_HASH_ALG, val=SHA2_256.
ike 0:c49e59846861b0f6/0000000000000000:278:   type=AUTH_METHOD, val=PRESHARED_KEY.
ike 0:c49e59846861b0f6/0000000000000000:278:   type=OAKLEY_GROUP, val=MODP2048.
ike 0:c49e59846861b0f6/0000000000000000:278: ISAKMP SA lifetime=86400
...
ike 0:c49e59846861b0f6/0000000000000000:278: my proposal, gw VPN:
ike 0:c49e59846861b0f6/0000000000000000:278: proposal id = 1:
ike 0:c49e59846861b0f6/0000000000000000:278:   protocol id = ISAKMP:
ike 0:c49e59846861b0f6/0000000000000000:278:   trans_id = KEY_IKE.
ike 0:c49e59846861b0f6/0000000000000000:278:   encapsulation = IKE/none
ike 0:c49e59846861b0f6/0000000000000000:278:   type=OAKLEY_ENCRYPT_ALG, val=AES_CBC,
key-len=256
ike 0:c49e59846861b0f6/0000000000000000:278:   type=OAKLEY_HASH_ALG, val=SHA2_256.
ike 0:c49e59846861b0f6/0000000000000000:278:   type=AUTH_METHOD, val=PRESHARED_KEY.
ike 0:c49e59846861b0f6/0000000000000000:278:   type=OAKLEY_GROUP, val=MODP2048.
ike 0:c49e59846861b0f6/0000000000000000:278: ISAKMP SA lifetime=86400
...
ike 0:c49e59846861b0f6/0000000000000000:278: negotiation failure
ike Negotiate ISAKMP SA Error: ike 0:c49e59846861b0f6/0000000000000000:278:
proposal chosen
...
```

Why didn't the tunnel come up?

- A. The pre-shared keys do not match.
- B. The remote gateway's phase 2 configuration does not match the local gateway's phase 2 configuration.
- C. The remote gateway's phase 1 configuration does not match the local gateway's phase 1 configuration.
- D. The remote gateway is using aggressive mode and the local gateway is configured to use man mode.

Answer: C

NEW QUESTION 8

A FortiGate's port1 is connected to a private network. Its port2 is connected to the Internet. Explicit web proxy is enabled in port1 and only explicit web proxy users can access the Internet. Web cache is NOT enabled. An internal web proxy user is downloading a file from the Internet via HTTP. Which statements are true

regarding the two entries in the FortiGate session table related with this traffic? (Choose two.)

- A. Both session have the local flag on.
- B. The destination IP addresses of both sessions are IP addresses assigned to FortiGate's interfaces.
- C. One session has the proxy flag on, the other one does not.
- D. One of the sessions has the IP address of port2 as the source IP address.

Answer: AD

NEW QUESTION 9

Refer to the exhibit, which contains the debug output of diagnose dvm device list.

```
FMG-VM64# diagnose dvm device list
There are currently 1 devices/vdoms managed:
TYPE      OID      SN      HA      IP      NAME      ADOM      IPS  FIRMWARE
fmg/      217      FGVM01... -      10.200.1.1 Local-FortiGate My_ADOM 15.0.0831 6.0 MR4 (1579)
faz enabled
|- STATUS: db: modified; conf: in sync; cond: pending; dm: retrieved; conn: up

|- vdom: [3] root flags:0 adom:My_ADOM pkg: [imported] Local-FortiGate_root
```

Which two statements about the output shown in the exhibit are correct? (Choose two.)

- A. ADOMs are disabled on the FortiManager
- B. The FortiGate configuration is in sync with latest running revision history.
- C. There are pending device-level changes yet to be installed on Local-FortiGate.
- D. The policy package has been modified for Local-FortiGate.

Answer: BC

NEW QUESTION 10

What global configuration setting changes the behavior for content-inspected traffic while FortiGate is in system conserve mode?

- A. av-failopen
- B. mem-failopen
- C. utm-failopen
- D. ips-failopen

Answer: A

Explanation:

https://help.fortinet.com/fos50hlp/54/Content/FortiOS/fortigate-security-profiles-54/Other_Profile_Consideratio

NEW QUESTION 10

Examine the following partial output from two system debug commands; then answer the question below.

```
# diagnose hardware sysinfo memory
MemTotal: 3092728 kB
MemFree: 1954204 kB
MemShared: 0 kB
Buffers: 284 kB
Cached: 143004 kB
SwapCached: 0 kB
Active: 34092 kB
Inactive: 109256 kB
HighTotal 1179648 kB
HighFree: 853516 kB
LowTotal: 1913080 kB
LowFree: 1100688 kB
SwapTotal: 0 kB
SwapFree: 0 kB
# diagnose hardware sysinfo shm
SHM counter: 285
SHM allocated: 6823936
SHM total: 623452160
concernemode: 0
shm last entered: n/a
system last entered: n/a
SHM FS total: 639725568
SHM FS free: 632614912

SHM FS alloc: 7110656
```

Which of the following statements are true regarding the above outputs? (Choose two.)

- A. The unit is running a 32-bit FortiOS
- B. The unit is in kernel conserve mode
- C. The Cached value is always the Active value plus the Inactive value
- D. Kernel indirectly accesses the low memory (LowTotal) through memory paging

Answer: AC

NEW QUESTION 13

View the IPS exit log, and then answer the question below.

diagnose test application ipsmonitor 3 ipsengine exit log"

pid = 93 (cfg), duration = 5605322 (s) at Wed Apr 19 09:57:26 2017 code = 11, reason: manual

What is the status of IPS on this FortiGate?

- A. IPS engine memory consumption has exceeded the model-specific predefined value.
- B. IPS daemon experienced a crash.
- C. There are communication problems between the IPS engine and the management database.
- D. All IPS-related features have been disabled in FortiGate's configuration.

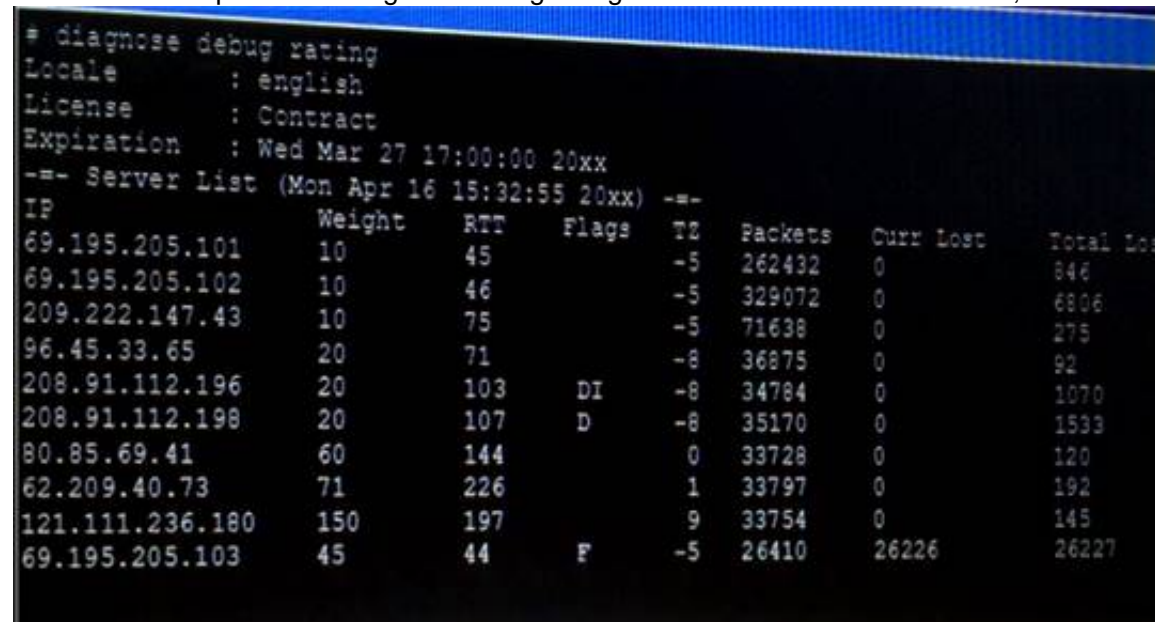
Answer: D

Explanation:

The command diagnose test application ipsmonitor includes many options that are useful for troubleshooting purposes. Option 3 displays the log entries generated every time an IPS engine process stopped. There are various reasons why these logs are generated: Manual: Because of the configuration, IPS no longer needs to run (that is, all IPS-related features have been disabled)

NEW QUESTION 17

Examine the output of the 'diagnose debug rating' command shown in the exhibit; then answer the question below.



```
# diagnose debug rating
Locale      : english
License     : Contract
Expiration  : Wed Mar 27 17:00:00 20xx
-- Server List (Mon Apr 16 15:32:55 20xx) --
IP          Weight  RTT   Flags  TZ   Packets  Curr Lost  Total Lost
69.195.205.101 10      45    -5     -5   262432   0          846
69.195.205.102 10      46    -5     -5   329072   0          6806
209.222.147.43 10      75    -5     -5   71638    0          275
96.45.33.65    20      71    -8     -8   36875    0          92
208.91.112.196 20      103   DI     -8   34784    0          1070
208.91.112.198 20      107   D      -8   35170    0          1533
80.85.69.41    60      144    0      0    33728    0          120
62.209.40.73   71      226    1      1    33797    0          192
121.111.236.180 150     197    9      9    33754    0          145
69.195.205.103 45      44     F     -5   26410    26226     26227
```

Which statement are true regarding the output in the exhibit? (Choose two.)

- A. There are three FortiGuard servers that are not responding to the queries sent by the FortiGate.
- B. The TZ value represents the delta between each FortiGuard server's time zone and the FortiGate's time zone.
- C. FortiGate will send the FortiGuard queries to the server with highest weight.
- D. A server's round trip delay (RTT) is not used to calculate its weight.

Answer: BC

NEW QUESTION 20

Examine the partial output from two web filter debug commands; then answer the question below:

```
# diagnose test application urlfilter 3
Domain | IP      DB Ver  T URL
34000000| 34000000  16.40224 P Bhttp://www.fgt99.com/
# get webfilter categories
g07 General Interest - Business:
 34 Finance and Banking
 37 Search Engines and Portals
 43 General Organizations
 49 Business
 50 Information and Computer Security
 51 Government and Legal Organizations
 52 Information Technology
```

Based on the above outputs, which is the FortiGuard web filter category for the web site www.fgt99.com?

- A. Finance and banking
- B. General organization.
- C. Business.
- D. Information technology.

Answer: C

NEW QUESTION 25

Refer to the exhibit, which contains a TCL script configuration on FortiManager.

An administrator has configured the TCL script on FortiManager, but the TCL script failed to apply any changes to the managed device after being run.

| Type | TCL Script |
|----------------|---|
| Run script on | Remote FortiGate ... |
| Script details | <pre>#! proc do_cmd {cmd} { puts [exec "\$cmd\n" "# " 10] } run_cmd "config system interface " run_cmd "edit port1" run_cmd "set ip 10.0.1.10 255.255.255.0" run_cmd "next" run_cmd "end"</pre> |

Why did the TCL script fail to make any changes to the managed device?

- A. The TCL command run_cmd has not been created.
- B. The TCL script must start with tinclude <>.
- C. Incomplete commands are ignored in TCL scripts.
- D. Changes to an interface configuration can be made only by a CLI script.

Answer: A

NEW QUESTION 26

Examine the output of the 'diagnose ips anomaly list' command shown in the exhibit; then answer the question below.

```
# diagnose ips anomaly list

list nids meter:
id=ip_dst_session      ip=192.168.1.10    dos_id=2  exp=3646  pps=0  freq=0
id=udp_dst_session     ip=192.168.1.10    dos_id=2  exp=3646  pps=0  freq=0
id=udp_scan            ip=192.168.1.110   dos_id=1  exp=649   pps=0  freq=0
id=udp_flood           ip=192.168.1.110   dos_id=2  exp=653   pps=0  freq=0
id=tcp_src_session     ip=192.168.1.110   dos_id=1  exp=5175  pps=0  freq=8
id=tcp_port_scan       ip=192.168.1.110   dos_id=1  exp=175   pps=0  freq=0
id=ip_src_session      ip=192.168.1.110   dos_id=1  exp=5649  pps=0  freq=30
id=udp_src_session     ip=192.168.1.110   dos_id=1  exp=5649  pps=0  freq=22
```

Which IP addresses are included in the output of this command?

- A. Those whose traffic matches a DoS policy.
- B. Those whose traffic matches an IPS sensor.
- C. Those whose traffic exceeded a threshold of a matching DoS policy.
- D. Those whose traffic was detected as an anomaly by an IPS sensor.

Answer: A

NEW QUESTION 31

View the exhibit, which contains the partial output of an IKE real-time debug, and then answer the question below.

```
ike 0: comes 10.0.0.2:500-> 10.0.0.1:500, ifindex-7...
ike 0: IKEV1 exchange-Aggressive id-baf47d0988e9237f/2f405ef3952f6fda len 430
ike 0: in
BAF47D0988E9237F2F405EF3952F6FDA0110040000000000000001AE0400003C000000010000000300101000
ike 0: RemoteSite:4: initiator: aggressive mode get 1st response
ike 0: RemoteSite:4: VID RPC 3947 4A131C81070358455C5728F20E95452F
ike 0: RemoteSite:4: VID DPD APCAD71368A1Plc96B8696FC77570100
ike 0: RemoteSite:4: VID PORTIGATE 8299031757A36082C6A621DE000502D7
ike 0: RemoteSite:4: peer is FortiGate/PortIOS (v6 b932)
ike 0: RemoteSite:4: VID FRAGMENTATION 4048B7D56EBCE88525E7DE7F00D6C2D3
ike 0: RemoteSite:4: VID FRAGMENTATION 4048B7D56EBCE88525E7DE7F00D6C2D3C0000000
ike 0: RemoteSite:4: received peer identifier PQON 'remote'
ike 0: RemoteSite:4: negotiation result
ike 0: RemoteSite:4: proposal id = 1:
ike 0: RemoteSite:4:   protocol id - ISAKMP:
ike 0: RemoteSite:4:   trans_id - KEY_IKE.
ike 0: RemoteSite:4:   encapsulation - IKE/none
ike 0: RemoteSite:4:   type=OAKLEY_ENCRYPT_ALG, val=AES_CBC, key-len=128
ike 0: RemoteSite:4:   type=OAKLEY_HASH_ALG, val=SHA
ike 0: RemoteSite:4:   type=AUTH_METHOD, val=PRESHARED_KEY.
ike 0: RemoteSite:4:   type=OAKLEY_GROUP, val=MODP1024.
ike 0: RemoteSite:4: ISAKMP SA lifetime=86400
ike 0: RemoteSite:4: ISAKMP SA baf47d0988e9237f/2f405ef3952f6fda key
16:B25B6C9384D8BD824E3DA3DC90CF5E73
ike 0: RemoteSite:4: PSK authentication succeeded
ike 0: RemoteSite:4: authentication OK
ike 0: RemoteSite:4: add INITIAL-CONTACT
ike 0: RemoteSite:4: enc
BAF47D0988E9237F2F405EF3952F6FDA081004010000000000000080140000181F2E48BFD8E9D603F
ike 0: RemoteSite:4: out
BAF47D0988E9237F2F405EF3952F6FDA08100401000000000000008c2E3FC9BA061816A396F009A12
ike 0: RemoteSite:4: sent IKE msg (agg_12send) : 10.0.0.1:500 ->10.0.0.2:500, len=140, id-
baf47d0988e9237f/2
ike 0: RemoteSite:4: established IKE SA baf47d0988e9237f/2f405ef3952f6fda
```

Which statements about this debug output are correct? (Choose two.)

- A. The remote gateway IP address is 10.0.0.1.
- B. It shows a phase 1 negotiation.
- C. The negotiation is using AES128 encryption with CBC hash.
- D. The initiator has provided remote as its IPsec peer ID.

Answer: BD

NEW QUESTION 36

View the exhibit, which contains the output of a web diagnose command, and then answer the question below.

| # diagnose webfilter fortiguard statistics list | | # diagnose webfilter fortiguard statistics list | |
|---|--------|---|------|
| Raring Statistics: | | Cache Statistics: | |
| DNS filtres | : 273 | Maximum memory | : 0 |
| DNS lookups | : 280 | Memory usage | : 0 |
| Data send failures | : 0 | | |
| Data read failures | : 0 | Nodes | : 0 |
| Wrong package type | : 0 | Leaves | : 0 |
| Hash table miss | : 0 | Prefix nodes | : 0 |
| Unknown server | : 0 | Exact nodes | : 0 |
| Incorrect CRC | : 0 | | |
| Proxy requests failures | : 0 | Requests | : 0 |
| Request timeout | : 1 | Misses | : 0 |
| Total requests | : 2409 | Hits | : 0 |
| Requests to FortiGuard servers | : 1182 | Prefix hits | : 0 |
| Server errored responses | : 0 | Exact hits | : 0 |
| Relayed rating | : 0 | | |
| Invalid profile | : 0 | No cache directives | : 0 |
| | | Add after prefix | : 0 |
| Allowed | : 1021 | Invalid DB put | : 0 |
| Blocked | : 3909 | DB updates | : 0 |
| Logged | : 3927 | | |
| Blocked Errors | : 565 | Percent full | : 0% |
| Allowed Errors | : 0 | Branches | : 0% |
| Monitors | : 0 | Leaves | : 0% |
| Authenticates | : 0 | Prefix nodes | : 0% |
| Warnings | : 18 | Exact nodes | : 0% |
| Ovrd request timeout | : 0 | | |
| Ovrd send failures | : 0 | Miss rate | : 0% |
| Ovrd read failures | : 0 | Hit rate | : 0% |
| Ovrd errored responses | : 0 | Prefix hits | : 0% |
| ... | | Exact hits | : 0% |

Which one of the following statements explains why the cache statistics are all zeros?

- A. The administrator has reallocated the cache memory to a separate process.
- B. There are no users making web requests.
- C. The FortiGuard web filter cache is disabled in the FortiGate's configuration.
- D. FortiGate is using a flow-based web filter and the cache applies only to proxy-based inspection.

Answer: C

NEW QUESTION 37

View these partial outputs from two routing debug commands:

```
# get router info kernel
tab=254 vf=0 scope=0 type=1 proto=11 prio=0 0.0.0.0/0.0.0.0/0->0.0.0.0/0 pref=0.0.0.0 gwy=10.200.1.254
dev=2(port1)
tab=254 vf=0 scope=0 type=1 proto=11 prio=0 0.0.0.0/0.0.0.0/0->0.0.0.0/0 pref=0.0.0.0 gwy=10.200.2.254
dev=3(port2)
tab=254 vf=0 scope=253 type=1 proto=2 prio=0 0.0.0.0/0.0.0.0/0->10.0.1.0/24 pref=10.0.1.254 gwy=0.0.0.0
dev=4(port3)
# get router info routing-table all
S* 0.0.0.0/0 [10/0] via 10.200.1.254, port1
    [10/0] via 10.200.2.254, port2, [10/0]
C 10.0.1.0/24 is directly connected, port3
C 10.200.1.0/24 is directly connected, port1
C 10.200.2.0/24 is directly connected, port2
```

Which outbound interface will FortiGate use to route web traffic from internal users to the Internet?

- A. Both port1 and port2
- B. port3
- C. port1
- D. port2

Answer: C

NEW QUESTION 40

Which two statements about FortiManager is true when it is deployed as a local FDS? (Choose two.)

- A. It caches available firmware updates for unmanaged devices.
- B. It can be configured as an update server, or a rating server, but not both.
- C. It supports rating requests from both managed and unmanaged devices.
- D. It provides VM license validation services.

Answer: CD

NEW QUESTION 45

Examine the output of the 'get router info bgp summary' command shown in the exhibit; then answer the question below.

```
# get router info bgp summary
BGP router identifier 0.0.0.117, local AS number 65117
BGP table version is 104
3 BGP AS-PATH entries
0 BGP community entries

Neighbor    V    AS  MsgRcvd  MsgSent  TblVer  InQ  OutQ  Up/Down  State/PfxRcd
10.125.0.60  4   65060   1698      1756     103   0    0  03:02:49        1
10.127.0.75  4   65075   2206      2250     102   0    0  02:45:55        1
10.200.3.1   4   65501    101       115        0   0    0    never        Active

Total number of neighbors 3
```

Which statements are true regarding the output in the exhibit? (Choose two.)

- A. BGP state of the peer 10.125.0.60 is Established.
- B. BGP peer 10.200.3.1 has never been down since the BGP counters were cleared.
- C. Local BGP peer has not received an OpenConfirm from 10.200.3.1.
- D. The local BGP peer has received a total of 3 BGP prefixes.

Answer: AC

NEW QUESTION 48

Which two statements about bulk configuration changes made using FortiManager CLI scripts are correct? (Choose two.)

- A. When run on the Device Database, you must use the installation wizard to apply the changes to the managed FortiGate device.
- B. When run on the Remote FortiGate directly, administrators do not have the option to review the changes prior to installation.
- C. When run on the All FortiGate in ADOM, changes are automatically installed without the creation of a new revision history.
- D. When run on the Policy Package, ADOM database, changes are applied directly to the managed FortiGate device.

Answer: AB

NEW QUESTION 52

Four FortiGate devices configured for OSPF connected to the same broadcast domain. The first unit is elected as the designated router The second unit is elected as the backup designated router Under normal operation, how many OSPF full adjacencies are formed to each of the other two units?

- A. 1
- B. 2
- C. 3
- D. 4

Answer: B

NEW QUESTION 56

A corporate network allows Internet Access to FSSO users only. The FSSO user student does not have Internet access after successfully logged into the Windows AD network. The output of the 'diagnose debug authd fssolist' command does not show student as an active FSSO user. Other FSSO users can access the Internet without problems. What should the administrator check? (Choose two.)

- A. The user student must not be listed in the CA's ignore user list.
- B. The user student must belong to one or more of the monitored user groups.
- C. The student workstation's IP subnet must be listed in the CA's trusted list.
- D. At least one of the student's user groups must be allowed by a FortiGate firewall policy.

Answer: AD

Explanation:

<https://kb.fortinet.com/kb/documentLink.do?externalID=FD38828>

NEW QUESTION 58

Which two configuration settings change the behavior for content-inspected traffic while FortiGate is in conserve mode? (Choose two.)

- A. IPS failopen
- B. mem failopen
- C. AV failopen
- D. UTM failopen

Answer: AC

NEW QUESTION 63

.....

Thank You for Trying Our Product

We offer two products:

1st - We have Practice Tests Software with Actual Exam Questions

2nd - Questions and Answers in PDF Format

NSE7_EFW-7.0 Practice Exam Features:

- * NSE7_EFW-7.0 Questions and Answers Updated Frequently
- * NSE7_EFW-7.0 Practice Questions Verified by Expert Senior Certified Staff
- * NSE7_EFW-7.0 Most Realistic Questions that Guarantee you a Pass on Your FirstTry
- * NSE7_EFW-7.0 Practice Test Questions in Multiple Choice Formats and Updatesfor 1 Year

100% Actual & Verified — Instant Download, Please Click
[Order The NSE7_EFW-7.0 Practice Test Here](#)