

Microsoft

Exam Questions mb-300

Microsoft Dynamics 365 Unified Operations Core



NEW QUESTION 1

- (Exam Topic 1)
You need to configure the system for account representatives.
Which two actions should you perform? Each correct answer presents a partial solution.
NOTE: Each correct selection is worth one point.

- A. Recreate the job alert as a change-based alert.
- B. Enable change-based alerts.
- C. Increase the batch job running frequency.
- D. Specify the batch server for the alert notifications job.

Answer: AB

NEW QUESTION 2

- (Exam Topic 1)
You need to detail a business process for streaming the customer editing process for account representatives. Which two actions should you perform? Each correct answer presents a partial solution.
NOTE: Each correct selection is worth one point.

- A. Navigate to the All Customer form for the Accounts receivable module and select the appropriate customer account.
- B. Navigate to the account representative's workspace and select the appropriate customer account.
- C. Select the form and then select Hide.
- D. Hide Invoice account from the view.

Answer: AD

NEW QUESTION 3

- (Exam Topic 2)
You plan the migration from Dynamics AX 2012 R3 to a Dynamics 365 for Finance and Operations environment. You will be using Lifecycle Services (LCS) and the tools provided with it.
You need to clean up data, review and configure SQL optimizations, and identify deprecated features in your code. What tool should you use?

- A. Microsoft Azure DevOps
- B. Upgrade analyzer
- C. Data Import/Export Framework (DIXF)
- D. Code upgrade estimation tools

Answer: B

NEW QUESTION 4

- (Exam Topic 2)
You are a Dynamics 365 for Finance and Operations system administrator.
Users have been creating advanced queries for filter data on forms. They want to be able to save the filter data for later use and access those views when they log in.
You need to instruct them in how to do this.
Which four actions should end users perform in sequence? To answer, move the appropriate actions from the list of actions to the answer area and arrange them in the correct order.

Actions

Select the saved query.

Click Save as filter.

Click Configure.

Filter the data in the grid via the advanced filter.

Right-click and select Personalize this form.

Click Options, and then select Add to workspace.

Select the workspace and presentation.

Add the All Customers form to favorites.

Answer Area

- A. Mastered
- B. Not Mastered

Answer: A

Explanation:

Actions

Select the saved query.

Click Save as filter.

Click Configure.

Filter the data in the grid via the advanced filter.

Right-click and select Personalize this form.

Click Options, and then select Add to workspace.

Select the workspace and presentation.

Add the All Customers form to favorites.

Answer Area

Add the All Customers form to favorites.

Click Configure.

Select the saved query.

Click Options, and then select Add to workspace.

NEW QUESTION 5

- (Exam Topic 2)

You are the project owner in a Lifecycle Services (LCS) project to deploy a Dynamics 365 for Finance and Operations environment.

The system must be configured to enable testers to record processes that become business processes and test plans.

You need to configure the system to generate User Acceptance Testing (UAT) test plans.

In which order should you perform the actions? To answer, move all actions from the list of actions to the answer area and arrange them in the correct order.

Actions

Create business process libraries in the LCS project.

Enable Azure DevOps sync.

Configure Azure DevOps for the LCS project.

Configure system administrator help parameters to the LCS project.

Enable Sync test cases.

Answer Area

- A. Mastered
- B. Not Mastered

Answer: A

Explanation:

Actions

Create business process libraries in the LCS project.

Enable Azure DevOps sync.

Configure Azure DevOps for the LCS project.

Configure system administrator help parameters to the LCS project.

Enable Sync test cases.

Answer Area

Create business process libraries in the LCS project.

Configure Azure DevOps for the LCS project.

Configure system administrator help parameters to the LCS project.

Enable Azure DevOps sync.

Enable Sync test cases.

⬆

⬇

NEW QUESTION 6

- (Exam Topic 2)

A multinational company has many legal entities and a complex organizational structure. The management of the company wants to set up an organizational hierarchy to help improve efficiency. You need to help create the organizational hierarchy. In which order should you recommend that actions be performed to create an organizational hierarchy? To answer, move all actions from the list of actions to the answer area and arrange them in the correct order.

Actions

Add organizations to the hierarchy

Assign a hierarchy purpose

Create organizations

Create a hierarchy

Plan the organizational model

⬆

⬇

Answer Area

⬆

⬇

- A. Mastered
- B. Not Mastered

Answer: A

Explanation:

References:
<https://docs.microsoft.com/en-us/dynamics365/unified-operations/fin-and-ops/organization-administration/tasks>

NEW QUESTION 7

- (Exam Topic 2)

You are tasked with enhancing usability in the Dynamics 365 for Finance and Operations deployment for your organization. Your organization is evaluating different approaches, including using workspaces. You need to identify the goals of using workspaces. Which goals should you identify? To answer, select the appropriate options in the answer area. NOTE: Each correct selection is worth one point.

Requirement

Visibility

Workspace definition

Functional use

Understand the current state of the light task activity to support informed decisions

Display deep information supporting complex task execution

An initial overview for a specific role to increase productivity

A view of complex activities requiring interaction across different roles

- A. Mastered
- B. Not Mastered

Answer: A

Explanation:

Answer Area

Requirement	Functional use
Visibility	Understand the current state of the light task activity to support informed decisions Display deep information supporting complex task execution
Workspace definition	An initial overview for a specific role to increase productivity A view of complex activities requiring interaction across different roles

NEW QUESTION 8

- (Exam Topic 2)

Note: This question is part of a series of questions that present the same scenario. Each question in the series contains a unique solution that might meet the stated goals. Some question sets might have more than one correct solution, while others might not have a correct solution.

After you answer a question in this section, you will NOT be able to return to it. As a result, these questions will not appear in the review screen.

You are a Dynamics 365 for Finance and Operations security administrator.

When testing security setups, users report that certain roles are gaining access to sensitive information via a form in the system.

You must investigate which user roles have what visibility and access level to system objects, and then send a report to the implementation team to address security compliance concerns.

You need to report the information from the system. Solution: Generate the Security role access report. Does the solution meet the goal?

A. Yes

B. No

Answer: A

NEW QUESTION 9

- (Exam Topic 2)

You plan the migration from Dynamics AX 2009 to a Dynamics 365 for Finance and Operations environment. You will be moving data.

You need to create a data package from a group of entities in Dynamics AX 2009. What should you use?

A. Upgrade analyzer

B. Code upgrade estimation tools

C. Dynamics AX 2009 Data migration tool (DMT)

D. Data Import/Export Framework (DIXF)

Answer: D

Explanation:

References:

<https://docs.microsoft.com/en-us/dynamics365/unified-operations/dev-itpro/migration-upgrade/ax2009-upgrade-export-package>

NEW QUESTION 10

- (Exam Topic 2)

A company implements Dynamics 365 for Finance and Operations.

They need additional information and want a subledger to record information for additional reporting rather than customizing all reports.

You need to set up the posting to accommodate the need for a subledger. Which three actions should you take? Each answer presents part of the solution.

A. Update existing reports to prevent data in the identified area from reporting

B. Create posting profiles to post to the identified area as needed for the request

C. Create posting definitions to post to the identified area as needed for the request

D. Update existing reports to add data in the identified area

E. Identify an area of the chart of accounts to record to as the subledger

Answer: BDE

NEW QUESTION 10

- (Exam Topic 2)

Note: This question is part of a series of questions that present the same scenario. Each question in the series contains a unique solution that might meet the stated goals. Some question sets might have more than one correct solution, while others might not have a correct solution.

After you answer a question in this section, you will NOT be able to return to it. As a result, these questions will not appear in the review screen.

You are a Dynamics 365 for Finance and Operations system administrator. You have a test environment that is used by several people at any given time.

You create a new data entity in your development and migrate the code to the test environment. In the test environment, you are unable to find the data entity in the list.

You need to locate the data entity.

Solution: Restart the Application Object Server (AOS) of the test environment. Does the solution meet the goal?

A. Yes

B. No

Answer: B

NEW QUESTION 13

- (Exam Topic 2)

You develop a new purchasing solution for a Dynamics 365 for Finance and Operations environment. You must provide functional test passes for the purchasing solution.

You need to plan a production environment test flow for the purchasing solution. What three steps should you verify in the functional passes of the purchasing solution?

- A. Purchase orders are generated
- B. Item requirements are present
- C. Production order processing occurs
- D. Production orders are generated
- E. The item master is designed and released to a legal entity

Answer: ABE

NEW QUESTION 16

- (Exam Topic 2)

You are responsible for regulatory compliance for a Dynamics 365 for Finance and Operations environment. You need to be able to search for the regulatory features of Dynamics 365 for Finance and Operations.

What should you use?

- A. Intelligent Data Management Framework (IDMF)
- B. System diagnostics
- C. Application Object Tree (AOT)
- D. Issue search

Answer: D

Explanation:

References:

<https://docs.microsoft.com/en-us/dynamics365/unified-operations/dev-itpro/lifecycle-services/issue-search-lcs>

NEW QUESTION 18

- (Exam Topic 2)

A company implements Dynamics 365 for Finance and Operations. It sets up and configures the system to support reporting requirements using Microsoft Power BI.

The customer service manager wants to create reports in Power BI for analyzing customer order patterns, order fulfillment metrics, customer satisfaction KPIs, and customer service representative goal metrics. These reports compare aggregated information across multiple demographic regions and business lines for current trends against historic information.

The manager would like to use the reports to make individual team performance more visible to the managerial and executive teams. Since reports will be used by those teams as well as mobile users, the manager would like the report response to reflect the latest data without requiring the user to wait.

You need to determine which tool or functionality best fits the scenario.

Which feature or functionality should you use? To answer, select the appropriate feature or functionality in the dialog box in the answer area.

NOTE: Each correct selection is worth one point

Answer Area

Scenario	Feature or functionality
Stage the aggregate data for use by the reports.	<div>Dynamics 365 system administration settings</div> <div>Power BI desktop client</div> <div>Lifecycle Services</div>
Set the data source to use DirectQuery.	<div>Dynamics 365 system administration settings</div> <div>Power BI desktop client</div> <div>Lifecycle Services</div>
Publish the new reports to the production environment.	<div>Dynamics 365 system administration settings</div> <div>Power BI desktop client</div> <div>Lifecycle Services</div>
Configure the data refresh rate for periodic updating.	<div>Dynamics 365 system administration settings</div> <div>Power BI desktop client</div> <div>Lifecycle Services</div>

- A. Mastered
- B. Not Mastered

Answer: A

Explanation:

Answer Area

Scenario	Feature or functionality
Stage the aggregate data for use by the reports.	Dynamics 365 system administration settings Power BI desktop client Lifecycle Services
Set the data source to use DirectQuery.	Dynamics 365 system administration settings Power BI desktop client Lifecycle Services
Publish the new reports to the production environment.	Dynamics 365 system administration settings Power BI desktop client Lifecycle Services
Configure the data refresh rate for periodic updating.	Dynamics 365 system administration settings Power BI desktop client Lifecycle Services

NEW QUESTION 20

- (Exam Topic 2)

During the implementation planning process, a company decides to migrate various functional data from its legacy systems. These include accounting data, sales data, and purchasing data.

Some functional data elements reference data stored in other tables.

You need to ensure that data types and data elements are imported in the correct order.

In what order should you perform the data migration? To answer, select the appropriate configuration in the answer area.

NOTE: Each correct selection is worth one point.

Answer Area

Sequential order	Order options
Data category	Master, reference, transaction Reference, master, transaction Transaction, reference, master Transaction, master, reference
Data entity	Ledger journals, chart of accounts, account structures Chart of accounts, account structures, ledger journals Account structures, chart of accounts, ledger journals Ledger journals, account structures, chart of accounts

- A. Mastered
- B. Not Mastered

Answer: A

Explanation:

Answer Area

Sequential order	Order options
Data category	Master, reference, transaction Reference, master, transaction Transaction, reference, master Transaction, master, reference
Data entity	Ledger journals, chart of accounts, account structures Chart of accounts, account structures, ledger journals Account structures, chart of accounts, ledger journals Ledger journals, account structures, chart of accounts

NEW QUESTION 25

- (Exam Topic 2)

You receive an error when importing data into the pilot instance. You need to troubleshoot the error. What should you do first?

Answer Area

You receive an error when importing data into the pilot instance. You need to troubleshoot the error. What should you do first?

Set the entity order to Customer parameters, Customer groups, Customers V3, Customer invoicing journal.
Set Default refresh type to Full push only.
Set Skip staging to Yes.
Set Generate data package to No.

Only a subset of customers is imported into the pilot instance. You make a correction to ensure that all customer data is imported. What should you do next?

Set the entity order to Customer parameters, Customer groups, Customers V3, Customer invoicing journal.
Set Default refresh type to Full push only.
Set Skip staging to Yes.
Set Generate data package to No.

- A. Mastered
- B. Not Mastered

Answer: A

Explanation:

Answer Area

You receive an error when importing data into the pilot instance. You need to troubleshoot the error. What should you do first?

Set the entity order to Customer parameters, Customer groups, Customers V3, Customer invoicing journal.
Set Default refresh type to Full push only.
Set Skip staging to Yes. ☒
Set Generate data package to No.

Only a subset of customers is imported into the pilot instance. You make a correction to ensure that all customer data is imported. What should you do next?

Set the entity order to Customer parameters, Customer groups, Customers V3, Customer invoicing journal. ☒
Set Default refresh type to Full push only.
Set Skip staging to Yes.
Set Generate data package to No.

NEW QUESTION 27

- (Exam Topic 2)

A company implements Dynamics 365 for Finance and Operations. It must set up the system to be ready for entering inventory items. You need to select which unit of conversion fits the scenario.

Which conversion types should you use? To answer, select the appropriate options in the answer area. NOTE: Each correct selection is worth one point.

Answer Area

Scenario	Conversion type
Car paint colors and their ingredients are purchased in barrels, stocked in ounces, and sold in gallons.	<input type="checkbox"/> Standard <input type="checkbox"/> Intra-class <input type="checkbox"/> Inter-class
Steel is purchased in tons, stocked in pounds, and sold in linear feet.	<input type="checkbox"/> Standard <input type="checkbox"/> Intra-class <input type="checkbox"/> Inter-class
Bolts and nuts are purchased in pounds, stocked as individual units, and sold in boxes.	<input type="checkbox"/> Standard <input type="checkbox"/> Intra-class <input type="checkbox"/> Inter-class

- A. Mastered
- B. Not Mastered

Answer: A

Explanation:

Answer Area	Scenario	Conversion type
Car paint colors and their ingredients are purchased in barrels, stocked in ounces, and sold in gallons.		Standard intra-class inter-class
Steel is purchased in tons, stocked in pounds, and sold in linear feet.		Standard intra-class inter-class
Bolts and nuts are purchased in pounds, stocked as individual units, and sold in boxes.		Standard intra-class inter-class

NEW QUESTION 29
- (Exam Topic 2)
You are configuring the address books for a company's accounts receivable, accounts payable, and retail operations. You need to configure the appropriate address books to meet various requirements. Which address book should you use for each scenario? To answer, drag the appropriate address book objects to the correct scenarios. Each address book object may be used once, more than once, or not at all. You may need to drag the spit bar between panes or scroll to view content. NOTE: Each correct selection is worth one point.

Address Book Object	Answer Area	Address Book Object
employee	Scenario Restrict account visibility for a given retail channel transaction. Create an address for a vendor. Link workers to retail locations. Create an address for a prospect.	Address Book Object
global		Address Book Object
customer		Address Book Object
contact		Address Book Object

- A. Mastered
- B. Not Mastered

Answer: A

Explanation:

Address Book Object	Answer Area	Address Book Object
employee	Scenario Restrict account visibility for a given retail channel transaction. Create an address for a vendor. Link workers to retail locations. Create an address for a prospect.	customer
global		global
customer		employee
contact		contact

NEW QUESTION 33
- (Exam Topic 2)
You are a Dynamics 365 for Finance and Operations implementation consultant. You plan to use automated regression testing in a company's environment, as the system will be updated frequently until automatic updates can be applied. You need to identify when and what key business object should be used during the implementation. Which business objects should you use? To answer, drag the appropriate objects to the correct component

actions. Each object may be used once, more than once, or not at all. You may need to drag the split bar between panes or scroll to view content.
NOTE: Each correct selection is worth one point.

1234

Objects

Test scripts

Business requirements

Answer Area

Component actions

Generate from the analysis meetings

Use for regression testing

Generate use cases

Use in a gap analysis process

Object

Object

Object

Object

Object

- A. Mastered
- B. Not Mastered

Answer: A

Explanation:

1234

Objects

Test scripts

Business requirements

Answer Area

Component actions

Generate from the analysis meetings

Use for regression testing

Generate use cases

Use in a gap analysis process

Object

Test scripts

Test scripts

Business requirements

Business requirements

NEW QUESTION 38

- (Exam Topic 2)

Note: This question is part of a series of questions that present the same scenario. Each question in the series contains a unique solution that might meet the stated goals. Some question sets might have more than one correct solution, while others might not have a correct solution. After you answer a question in this section, you will NOT be able to return to it. As a result, these questions will not appear in the review screen.

You are a functional consultant who is deploying Dynamics 365 for Finance and Operations. The implementation must:

- ☒ Use an iterative approach
- ☒ Integrate with real-world data
- ☒ Enforce standards and governance
- ☒ Implement multiple rounds of feedback

You need to deploy and validate the implementation.

Solution: Perform a fit-gap analysis. Configure Dynamics 365 for Finance and Operations to address the functional gap. Deploy the configuration.

Does the solution meet the goal?

- A. Yes
- B. No

Answer: A

NEW QUESTION 41

- (Exam Topic 2)

You are tasked with setting up Case management in the Dynamics 365 for Finance and Operations deployment for your organization.

Your organization must use cases to track defect and enhancement reports for products, so that engineers can improve products over time. Only appropriate employees within the organization should have access to cases and related information.

- * Call center employees create thousands of service cases and ensure that the proper resources are allocated for each service.
- * Service department employees fix cases created by the call center and create cases for defects and enhancement suggestions when they identify them.
- * Engineers review the cases from the service department while planning and designing the next version. You need to configure the tool to enable tracking of service cases and product defects and enhancements.

Which Case management settings should you choose for each category or categories? To answer, select the appropriate options in the answer area.

NOTE: Each correct selection is worth one point.

Passing Certification Exams Made Easy

visit - <https://www.surepassexam.com>

Option	Value
Category to use.	<div>General and Production</div> <div>Service and Product change</div>
Service department in which employees create cases.	<div>General</div> <div>Production</div> <div>Service</div> <div>Product change</div>
Call center in which employees create cases.	<div>General</div> <div>Production</div> <div>Service</div> <div>Product change</div>

- A. Mastered
- B. Not Mastered

Answer: A

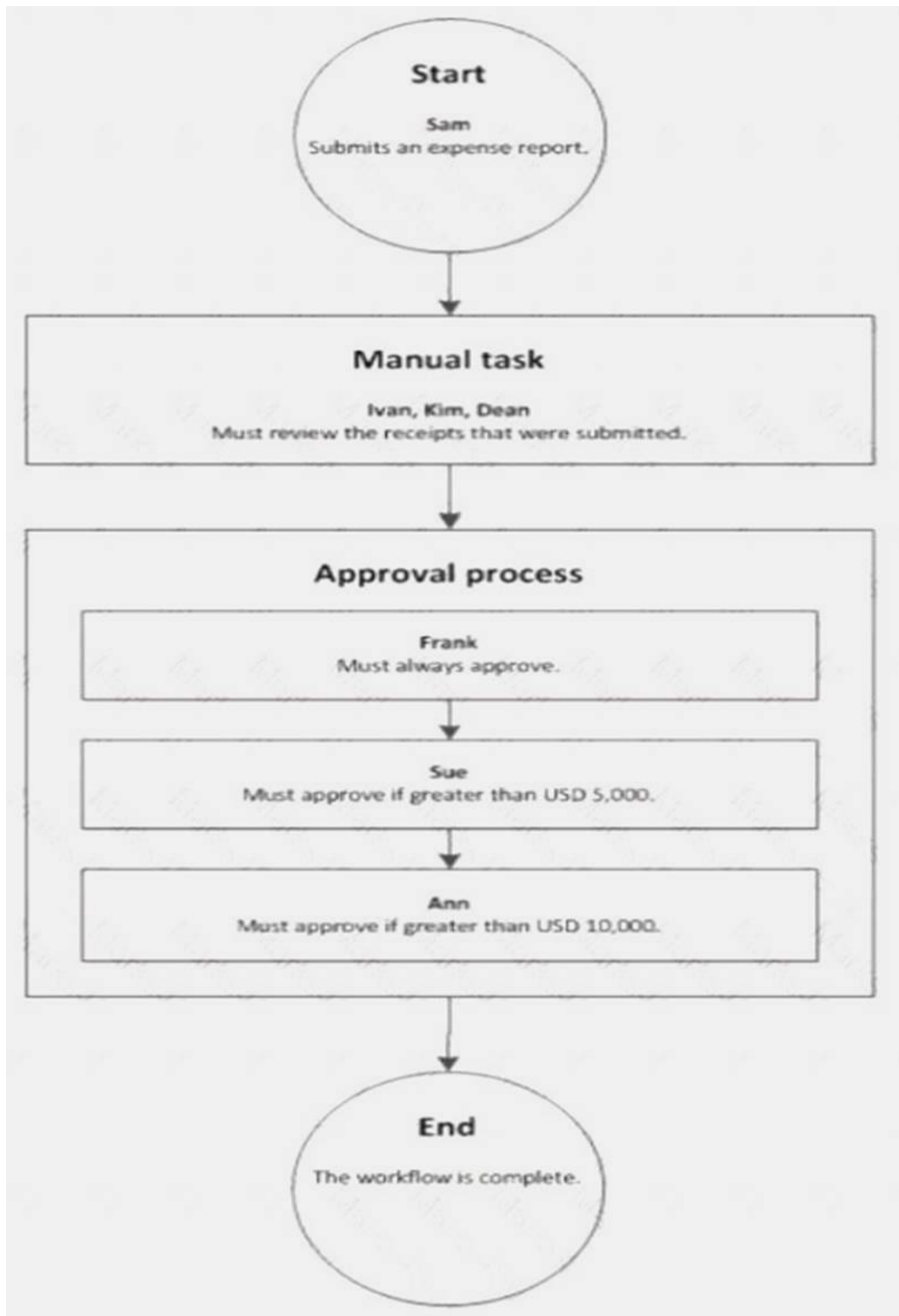
Explanation:

Option	Value
Category to use.	<div>General and Production</div> <div>Service and Product change</div>
Service department in which employees create cases.	<div>General</div> <div>Production</div> <div>Service</div> <div>Product change</div>
Call center in which employees create cases.	<div>General</div> <div>Production</div> <div>Service</div> <div>Product change</div>

NEW QUESTION 44

- (Exam Topic 2)

A company sets up a workflow for expense reports. An employee named Sam submits an expense report totaling USD 7,000 to go through the workflow.



Use the drop-down menus to select the answer choice that answers each question based on the information presented in the graphic.

NOTE: Each correct selection is worth one point.

Questions	Answer choice
What statement about the workflow is correct?	<div>Ann can reject the expense report.</div> <div>Ivan, Kim, and Dean must all complete the manual task.</div> <div>The workflow ends after Sue approves the expense report.</div> <div>The expense report will go through Frank, Sue, and Ann for approval.</div>
What type of workflow is this?	<div>Workflow with roles</div> <div>Workflow with a manual decision</div> <div>Workflow with multiple users in a task</div> <div>Workflow with a line-item workflow element</div>

- A. Mastered
- B. Not Mastered

Answer: A

Explanation:

Reference:
<https://docs.microsoft.com/en-us/dynamicsax-2012/appuser-itpro/workflow-with-multiple-users-in-a-task>

NEW QUESTION 49

- (Exam Topic 2)

Note: This question is part of a series of questions that present the same scenario. Each question in the series contains a unique solution that might meet the stated goals. Some question sets might have more than one correct solution, while others might not have a correct solution.

After you answer a question in this section, you will NOT be able to return to it. As a result, these questions will not appear in the review screen.

You are a Dynamics 365 for Finance and Operations system administrator. You have a test environment that is used by several people at any given time.

You create a new data entity in your development and migrate the code to the test environment. In the test environment, you are unable to find the data entity in the list.

You need to locate the data entity.

Solution: Enable the Public API check box in the data entity. Does the solution meet the goal?

- A. Yes
- B. No

Answer: B

NEW QUESTION 54

- (Exam Topic 2)

You are a system administrator using Dynamics 365 for Finance and Operations. You work in a project-based organization.

Each project has an approval process that will be assigned to different users of the system. Approvals are processed based on documents. Within those documents are different line items. Each line item may have a different approver.

You need to validate if the proposed action will satisfy the requirements.

For each of the following solutions, select Yes if the action meets the requirements. Otherwise, select No. NOTE: Each correct selection is worth one point.

Action	Yes	No
Configure document types. Configure document management parameters.	<input type="radio"/>	<input type="radio"/>
Create a document workflow. Configure line-item workflow elements for the document workflow.	<input type="radio"/>	<input type="radio"/>
Create workflow actions for when the document is assigned to the approver.	<input type="radio"/>	<input type="radio"/>
Set up reason codes for electronic signatures.	<input type="radio"/>	<input type="radio"/>

- A. Mastered
- B. Not Mastered

Answer: A

Explanation:

Answer Area

Action	Yes	No
Configure document types. Configure document management parameters.	<input checked="" type="radio"/>	<input type="radio"/>
Create a document workflow. Configure line-item workflow elements for the document workflow.	<input type="radio"/>	<input checked="" type="radio"/>
Create workflow actions for when the document is assigned to the approver.	<input checked="" type="radio"/>	<input type="radio"/>
Set up reason codes for electronic signatures.	<input checked="" type="radio"/>	<input type="radio"/>

NEW QUESTION 57

- (Exam Topic 2)

You plan a data migration from Dynamics AX 2009 to a Dynamics 365 for Finance and Operations environment. You need to ensure that you can perform the data migration. What should you do first?

- A. Upgrade the existing on-premises environment to Dynamics 365 for Finance and Operations online
- B. Migrate content to Dynamics POS (Point-of-Sale) 2009
- C. Upgrade the existing on-premises environment to Dynamics AX 2012 R2
- D. Migrate content to Dynamics 365 Business Central

Answer: C

NEW QUESTION 58

- (Exam Topic 2)

A company plans to create a global address book and additional address books for each line of business. You need to help add parties to the address books. What party types can you use for both the global address book and the additional address books? NOTE: Each correct selection is worth one point.

- A. Customer
- B. Vendor
- C. Person
- D. Competitor
- E. Organization

Answer: ABD

Explanation:

<https://docs.microsoft.com/en-sg/dynamics365/unified-operations/fin-and-ops/organization-administration/overv>

NEW QUESTION 59

- (Exam Topic 2)

You are a Dynamics 365 for Finance and Operations system administrator.

You have 50 identified purchase order numbers that are not used in the system and are not being recycled. Why they are missing is unknown. Purchasing operations is currently operating around the clock and no downtime can occur. You need to use the missing numbers in the system. What should you do?

- A. Run the Number sequence wizard for the purchase order number sequence.
- B. Change the number sequence to manual, then manually assign the number sequences to the new purchase orders.
- C. Change the number sequence to continuous and create the new purchase orders.
- D. Run Automatic cleanup of number sequence and create the new purchase orders.
- E. Change the number sequence to non-continuous and create the new purchase orders.

Answer: D

NEW QUESTION 63

- (Exam Topic 2)

You set up Dynamics 365 for Finance and Operations. Your organization will use email with the application.

You need to ensure that email will be sent using typical secure settings. What setting must be set as specified?

- A. In-place hold and Litigation hold are enabled.
- B. In-place eDiscovery is enabled,
- C. The SMTP port field is set to 587.
- D. Retention policies are enabled.

Answer: C

NEW QUESTION 67

- (Exam Topic 2)

A company plans to implement the case management feature of Dynamics 365 for Finance and Operations. You need to describe the scenarios in which you should use the case management tool. Which three scenarios should be used? Each correct answer presents a complete solution. NOTE: Each correct selection

is worth one point.

- A. Since case activities can be assigned to different people, a case can use workflow.
- B. Although the sales module already has return-order functionality, case management is still used for customer returns and claims.
- C. Knowledge articles used by case management are associated with specific functional modules.
- D. A human resources generalist can use the case management tool to track employee interactions, even though the department stores confidential information about employees.
- E. A case can be used to track both external and internal issues.

Answer: CDE

Explanation:

References:

<https://docs.microsoft.com/en-us/dynamics365/unified-operations/fin-and-ops/organization-administration/cases>

NEW QUESTION 70

- (Exam Topic 2)

Note: This question is part of a series of questions that present the same scenario. Each question in the series contains a unique solution that might meet the stated goals. Some question sets might have more than one correct solution, while others might not have a correct solution.

After you answer a question in this section, you will NOT be able to return to it. As a result, these questions will not appear in the review screen.

You are developing a file-based integration to Dynamics 365 for Finance and Operations.

Microsoft Excel files with 15,000 or more records need to be imported into the system periodically by individual users. The records need to be imported in full within a 5-minute approved window.

You need to determine how to accomplish the import into the system.

Solution: Import the data by using the Data Management Framework's package API. Does the solution meet the goal?

- A. Yes
- B. No

Answer: B

NEW QUESTION 71

- (Exam Topic 2)

You are a Dynamics 365 for Finance and Operations system administrator for a United States-based corporation that is expanding to other regions.

You set up a new legal entity for Brazil.

You need to enable localization for Brazil in the new legal entity. What should you do?

- A. Create a new Lifecycle Services project.
- B. Create a new entity with your corporate address in the system, and then update the address to the Brazil office address.
- C. Create a new legal entity with the Brazil office address in the system, and then set preferences according to the user.
- D. Create a new configuration key and associate it with the Brazil localization.
- E. Create a new entity in the system with your corporate address and set the user language preferences for Brazil.

Answer: D

NEW QUESTION 74

- (Exam Topic 2)

You are a Dynamics 365 for Finance and Operations systems analyst.

A user configures an alert for purchase orders that have a delivery date of two weeks away. However, batch alerts are not being sent.

You need to troubleshoot why alerts are not processing.

What two actions may be the cause for alerts not being sent? Each correct answer presents a complete solution. NOTE: Each correct selection is worth one point.

- A. The date format in the Dynamics 365 tenant does not match the format in the client device-CD
- B. A batch processing window may be set up for that batch job.
- C. The change-based alert has expired.
- D. There may not be a batch server assigned to the batch job.

Answer: CD

Explanation:

Reference:

<https://community.dynamics.com/ax/b/shafeealabadiaxtutorials/posts/ax-2012-alert-management-part-ii-due-dat>

NEW QUESTION 76

- (Exam Topic 2)

Note: This question is part of a series of questions that present the same scenario. Each question in the series contains a unique solution that might meet the stated goals. Some question sets might have more than one correct solution, while others might not have a correct solution.

After you answer a question in this section, you will NOT be able to return to it. As a result, these questions will not appear in the review screen.

You are configuring a Dynamics 365 for Finance and Operations environment. You must set up Microsoft Excel data exports.

You need to verify that the solution will result in a successful export of data to Excel. Solution: Use OAuth authentication.

Does the solution meet the goal?

- A. Yes
- B. No

Answer: B

NEW QUESTION 80

- (Exam Topic 2)

You are a systems administrator at a company that has implemented Dynamics 365 for Finance and Operations.

New employees are starting at the company.

You need to extend the electronic signatures functionality to them.

Which two actions should you perform? Each answer presents part of the solution.

NOTE: Each correct selection is worth one point.

A. On the Email parameters page, specify that SSL is required

B. Specify the user's email address

C. In License configuration, enable Maintenance mode

D. Select the Electronic signature check box

Answer: CD

Explanation:

Reference:

<https://docs.microsoft.com/en-us/dynamics365/unified-operations/fin-and-ops/organization-administration/tasks>

NEW QUESTION 83

- (Exam Topic 2)

A company needs to set up its printers to work with Dynamics 365 for Finance and Operations. You need to set up the printers for network printing from the Dynamics 365 client browser.

Which three actions should be performed in order? To answer, move all actions from the list of actions to the answer area and arrange them in the correct order.

Actions

Activate the network printers

Install and configure a document routing agent

Set up the network printer and assign a static IP

Register network printers in Finance and Operations



Answer Area

A. Mastered

B. Not Mastered

Answer: A

Explanation:

References:

<https://docs.microsoft.com/en-us/dynamics365/unified-operations/dev-itpro/analytics/install-document-routing-a>

NEW QUESTION 85

- (Exam Topic 2)

Note: This question is part of a series of questions that present the same scenario. Each question in the series contains a unique solution that might meet the stated goals. Some question sets might have more than one correct solution, while others might not have a correct solution.

After you answer a question in this section, you will NOT be able to return to it. As a result, these questions will not appear in the review screen.

You are a Dynamics 365 for Finance and Operations system administrator. You have a test environment that is used by several people at any given time.

You create a new data entity in your development and migrate the code to the test environment. In the test environment, you are unable to find the data entity in the list.

You need to locate the data entity. Solution: Reopen the client browser. Does the solution meet the goal?

A. Yes

B. No

Answer: B

NEW QUESTION 89

- (Exam Topic 2)

A company implements Dynamics 365 for Finance and Operations.

You are the primary approver for purchase requisitions that are greater than \$500,000. You are going on vacation for two weeks.

You need to assign another user as the approver only for purchase requisitions greater than \$500,000. What should you do?

A. Under User Options, add a user and assign the scope of Module

B. Under User Options, add a user and assign the scope of All

C. Under User Options, add a user and assign the scope of Workflow

Answer: C

NEW QUESTION 93

- (Exam Topic 2)

You are a Dynamics 365 for Finance and Operations systems administrator. Microsoft recently released a new feature for public preview that would add significant value to your organization without licensing adjustments. You need to enable the feature. Where can you enable the preview feature?

- A. Solution management
- B. Lifecycle Services
- C. Organizational administration module
- D. experience.dynamics.com
- E. System administration module

Answer: E

NEW QUESTION 96

- (Exam Topic 2)

You are a Dynamics 365 for Finance and Operations system administrator. You create different workflows for Canada and the Unites States. You must create a workflow that sends a notification to the North American workflow administrator with workflow comments in the notification. You need to configure the workflows. What option should you select for each scenario? To answer, select the appropriate options in the answer area. NOTE: Each correct selection is worth one point.

Scenario	Option
Include a notification with workflow-specific data.	Notification texts Work item instructions Placeholders Line-item workflows
Run a different workflow for each region.	Condition Automatic action Parallel activity Automated task
Send an email to a group of users by role when a workflow task is rejected.	Workflow user Participant Queue

- A. Mastered
- B. Not Mastered

Answer: A

Explanation:

Scenario	Option
Include a notification with workflow-specific data.	Notification texts Work item instructions Placeholders Line-item workflows
Run a different workflow for each region.	Condition Automatic action Parallel activity Automated task
Send an email to a group of users by role when a workflow task is rejected.	Workflow user Participant Queue

NEW QUESTION 98

- (Exam Topic 2)

You set up a new installation of Dynamics 365 for Finance and Operations for a Fortune 500 company. The company is organized into divisions. You need to design the structure in the application. What application features should you use? To answer, drag the appropriate setting to the correct drop targets. Each source may be used once, more than once, or not at all. You may need to drag the split bar between panes or scroll to view content. NOTE: Each correct selection is worth one point.

Application features

Legal entity

Business unit

Department

Value stream

Answer Area

Organizational structure

The fortune 500 company

A semi-autonomous operating entity

Human resources

Production flow activity control

Application feature

Application feature

Application feature

Application feature

- A. Mastered
- B. Not Mastered

Answer: A

Explanation:

References:
<https://docs.microsoft.com/en-us/dynamics365/unified-operations/fin-and-ops/organization-administration/organ>

NEW QUESTION 100

- (Exam Topic 2)

You set up a new instance of Dynamics 365 for Finance and Operations. Your company sells widgets in cases of 12 units and pallets of 144 cases. You need to establish the units of measure.

Which parameter is used to detail the units of measure? To answer, select the detail to match the parameter in the answer area.

NOTE: Each correct selection is worth one point.

Parameter	Detail
Unit class	<div>Quantity</div> <div>Mass</div> <div>Area</div>
From unit in widgets-per-case conversion	<div>Unit</div> <div>Case</div> <div>Pallet</div> <div>Widgets</div>
To unit in cases-per-pallet conversion	<div>Unit</div> <div>Case</div> <div>Pallet</div> <div>Widgets</div>

- A. Mastered
- B. Not Mastered

Answer: A

Explanation:

Parameter	Detail
Unit class	<div>Quantity</div> <div>Mass</div> <div>Area</div>
From unit in widgets-per-case conversion	<div>Unit</div> <div>Case</div> <div>Pallet</div> <div>Widgets</div>
To unit in cases-per-pallet conversion	<div>Unit</div> <div>Case</div> <div>Pallet</div> <div>Widgets</div>

NEW QUESTION 103

- (Exam Topic 2)

You are a Dynamics 365 for Finance and Operations system administrator.

A user is reporting an issue with the Sales Order form. The UI for the form is not loading properly, and there are some performance issues. The object was working fine until the most recent update release. The user has personalized this form, is using Microsoft Internet Explorer 11, and no other users are reporting issues.

You need to resolve the issue. What should you do?

- A. Export, delete, then reimport the usage data for the sales form object.
- B. Disable and then re-enable the user.
- C. Reset all the usage data for the user.
- D. Reimport and compile the AOT object causing issues.

Answer: C

NEW QUESTION 105

- (Exam Topic 2)

A company implements Dynamics 365 for Finance and Operations.

The company wants to utilize Case management to track project issues and risks and associate them to the projects. Project managers will be responsible for managing the new cases.

You need to configure the system. What should you do?

- A. Create case subcategories named Issue and Risk.
- B. Create parent case categories named Issue and Risk.
- C. Create case activities for Issue and Risk.
- D. Create case category security roles named Issue and Risk and assign them to the Project managers duty.

Answer: A

NEW QUESTION 108

- (Exam Topic 2)

A company plans to set up an organizational hierarchy to manage organizational relationships. You need to identify which organizational purpose to use. What purpose can you assign to an organizational hierarchy?

- A. Centralized payments
- B. Financial reason code
- C. Cost center

D. Price models

Answer: A

Explanation:

Reference:

<https://docs.microsoft.com/en-us/dynamics365/unified-operations/financials/cash-bank-management/set-up-cent>

NEW QUESTION 110

.....

Thank You for Trying Our Product

We offer two products:

1st - We have Practice Tests Software with Actual Exam Questions

2nd - Questions and Answers in PDF Format

mb-300 Practice Exam Features:

- * mb-300 Questions and Answers Updated Frequently
- * mb-300 Practice Questions Verified by Expert Senior Certified Staff
- * mb-300 Most Realistic Questions that Guarantee you a Pass on Your FirstTry
- * mb-300 Practice Test Questions in Multiple Choice Formats and Updatesfor 1 Year

100% Actual & Verified — Instant Download, Please Click
[Order The mb-300 Practice Test Here](#)