



HP

Exam Questions HPE6-A72

Aruba Certified Switching Associate Exam

About ExamBible

[Your Partner of IT Exam](#)

Found in 1998

ExamBible is a company specialized on providing high quality IT exam practice study materials, especially Cisco CCNA, CCDA, CCNP, CCIE, Checkpoint CCSE, CompTIA A+, Network+ certification practice exams and so on. We guarantee that the candidates will not only pass any IT exam at the first attempt but also get profound understanding about the certificates they have got. There are so many alike companies in this industry, however, ExamBible has its unique advantages that other companies could not achieve.

Our Advances

* 99.9% Uptime

All examinations will be up to date.

* 24/7 Quality Support

We will provide service round the clock.

* 100% Pass Rate

Our guarantee that you will pass the exam.

* Unique Gurantee

If you do not pass the exam at the first time, we will not only arrange FULL REFUND for you, but also provide you another exam of your claim, ABSOLUTELY FREE!

NEW QUESTION 1

```
Core# configure terminal
Core(config)# vrf Green
Core(config-vrf)# exit
Core(config)#
Core(config)# interface vlan 50
Core(config-if-vlan)#
?
```

Given the configuration on the CORE switch shown above, what command would follow to assign the switched virtual interface (SVI) vlan 50 to the VRF created?

- A. Core(config-if-vlan)# vrf attach Green
- B. Core(config-if-vlan)# ip vpn-instance Green
- C. Core(config-if-vlan)# ip vrf forwarding Green
- D. Core(config-if-vlan)# routing-context Green vrf

Answer: A

NEW QUESTION 2

What is the correct description of a Multi- Layer Switch?

- A. a switch with Layer 3 routing capabilities but lacks any Layer 1 features as a consequence
- B. any switch that supports PoE, LLDP-MED and Flow Control
- C. has all the functionality of a Layer 2 switch and most of the functionality of a Layer 3 router
- D. multi-Layer refers specifically to using chassis switches with several line cards over stack port switches

Answer: C

NEW QUESTION 3

The section in blue can be ignored.

```
SW1(config)# interface 1/1/1-1/1/2
SW1(config-if-<1/1/1-1/1/2)# vlan access 2
SW1(config-if-<1/1/1-1/1/2)# exit
SW1(config)# interface 1/1/11-1/1/17
SW1(config-if-<1/1/11-1/1/17)# vlan access 17
SW1(config-if-<1/1/11- 1/1/17)# exit
```

After completing the above commands, what is the expected output of show vlan with no other vlan commanded having been added?

A. **SW1# show vlan**

VLAN	Name	Status	Reason	Type	Interfaces
1	DEFAULT_VLAN_1	up	ok	default	1/1/2
2		up	ok	static	1/1/2
11		up	ok	static	1/1/17
12		up	ok	static	1/1/17
13		up	ok	static	1/1/17
14		up	ok	static	1/1/17
15		up	ok	static	1/1/17
16		up	ok	static	1/1/17
17		up	ok	static	1/1/17

B. **SW1# show vlan**

VLAN	Name	Status	Reason	Type	Interfaces
1	DEFAULT_VLAN_1	up	ok	default	1/1/1-1/1/24
2		up	ok	static	1/1/1-1/1/2
17		up	ok	static	1/1/11-1/1/17

C. **SW1# show vlan**

VLAN	Name	Status	Reason	Type	Interfaces
2	DEFAULT_VLAN_2	up	ok	static	1/1/1-1/1/2
17		up	ok	static	1/1/11-1/1/17

D. **SW1# show vlan**

VLAN	Name	Status	Reason	Type	Interfaces
1	DEFAULT_VLAN_1	up	ok	default	<output omitted>
2		up	ok	static	1/1/1-1/1/2
17		up	ok	static	1/1/11-1/1/17

Answer: D

NEW QUESTION 4

What are two OSPF attributes within the hello messages that must match to successfully establish neighbor relationships? (Choose two.)

- A. Router ID
- B. Priority
- C. Hello and Dead intervals
- D. Area ID
- E. Process ID

Answer: CD

NEW QUESTION 5

Which two options are the Layer 3 Routing protocols? (Choose two.)

- A. BGP
- B. LLDP
- C. OSPF
- D. MPLS
- E. 802.3ad

Answer: AC

NEW QUESTION 6

What command will save your configuration on an Aruba AOS-CX switch so that your changes automatically load on next reboot?

- A. copy running-config checkpoint startup-config
- B. copy startup-config running-config
- C. copy running-config initial-checkpoint
- D. copy running-config default

Answer: A

NEW QUESTION 7

Which statement is correct regarding powering an Aruba Access Point?

- A. PoE or PoE+ is only used with Ethernet that is carried over multi-mode fiber cabling.
- B. Using switchports for this reason is unnecessary, because Aruba Access Points typically use an AC to DC power adapter to draw power.
- C. PoE or PoE+ enabled switchports are rarely used given concerns about causing electrical interference, with the data also carried over Ethernet cabling.
- D. Most administrators use PoE or PoE+ enabled switchports to provide both Ethernet connectivity and power to the AP.

Answer: D

NEW QUESTION 8

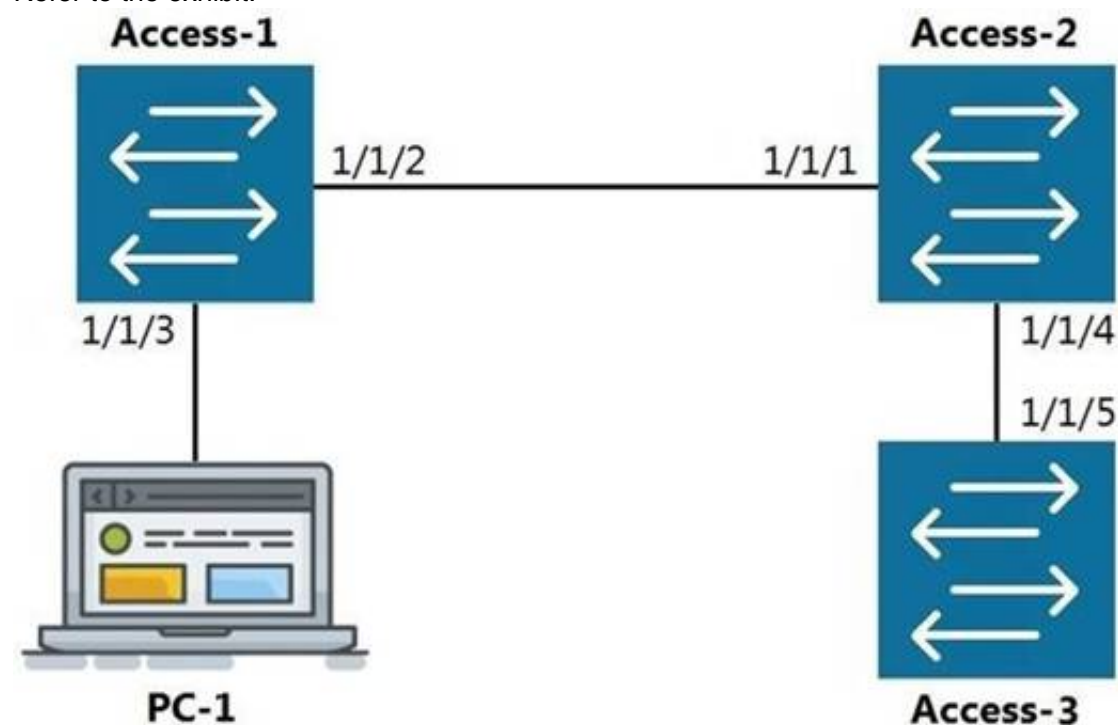
What is a benefit of choosing a 3-Tier design with routing at the Aggregation layer?

- A. Better Core router performance by offloading processing
- B. Shifting endpoint access to the Aggregation layer from the Access layer
- C. Using access control lists (ACLs) at the Core to improve performance
- D. Connecting WAN/MPLS and Data center access to the Aggregation layer

Answer: A

NEW QUESTION 9

Refer to the exhibit.



LLDP

The command show LLDP neighbor-info gets typed into Access-1. All switches are Aruba OS-CX switches. What is the output of this command?

A.

LOCAL-PORT	CHASSIS-ID	PORT-ID	PORT-DESC	TTL	SYS-NAME
1/1/1	90:20:c2:bc:ed:00	1/1/2	1/1/2	120	Access-2
1/1/5	90:20:c2:bc:ef:00	1/1/2	1/1/2	120	Access-3

B.

LOCAL-PORT	CHASSIS-ID	PORT-ID	PORT-DESC	TTL	SYS-NAME
1/1/1	90:20:c2:bc:ed:00	1/1/2	1/1/2	120	Access-2

C.

LOCAL-PORT	CHASSIS-ID	PORT-ID	PORT-DESC	TTL	SYS-NAME
1/1/2	90:20:c2:bc:ed:00	1/1/1	1/1/1	120	Access-2
1/1/2	90:20:c2:bc:ef:00	1/1/5	1/1/5	120	Access-3

D.

LOCAL-PORT	CHASSIS-ID	PORT-ID	PORT-DESC	TTL	SYS-NAME
1/1/2	90:20:c2:bc:ed:00	1/1/1	1/1/1	120	Access-2

Answer: D

NEW QUESTION 10

What is the process where a compute device converts logical data bits into the correct physical representation depending on the media?

- A. Demodulation
- B. Modulation
- C. Propagation
- D. Encapsulation

Answer: D

NEW QUESTION 10

Which two statements are true regarding Checkpoints on Aruba switches? (Choose two.)

- A. Rolling back to a prior checkpoint triggers a reboot of the switch.
- B. Stacking switches using VSF or VSX will disable the Checkpoint feature.
- C. A checkpoint is a snapshot of the running-configuration and relevant metadata at the time the checkpoint was created.
- D. System-generated checkpoints are created after a configuration change and 5 minutes of inactivity.
- E. Checkpoints are available on AOS 5400R switches, as well as on all AOS-CX switches.

Answer: CE

NEW QUESTION 12

The customer has 778 developers testing computer games on the network.

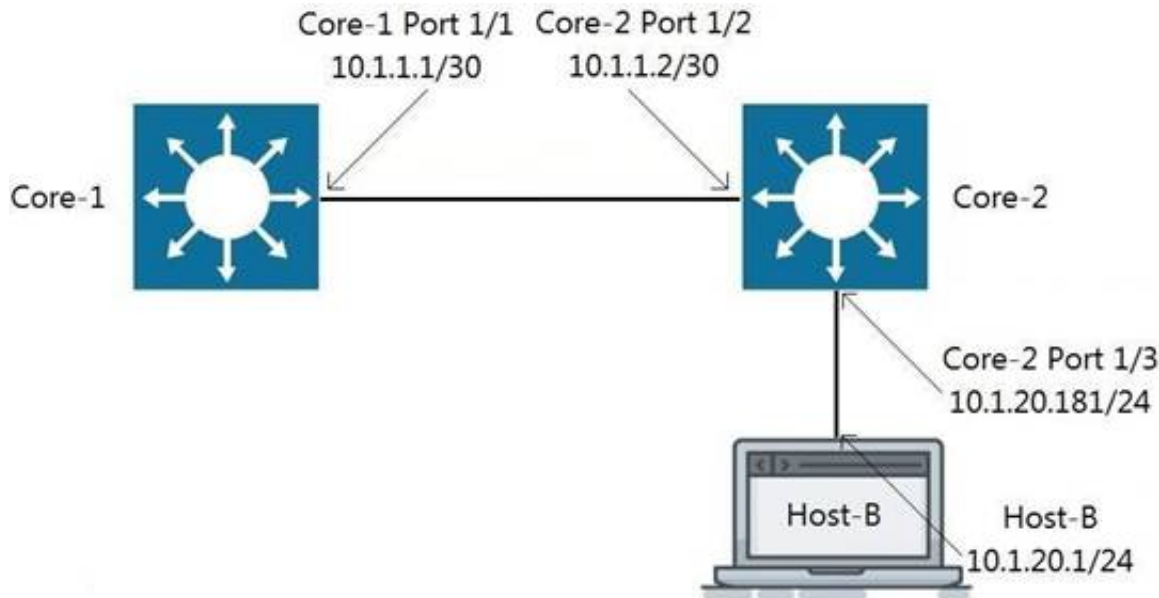
Which two actions resolve Broadcast storms? (Choose two.)

- A. Manually disable the redundant link to immediately resolve the impacted portion of the network.
- B. Utilize Spanning Tree to dynamically disable all redundant links in a segment.
- C. Setting switch ports to half-duplex will resolve Broadcast storms using Carrier Sense Multiple-Access Collision Detection (CSMA/CD).
- D. Enable single Area Open Shortest Path First (OSPF) on all Layer 2 switches, but do not enable routing.
- E. Utilize Spanning Tree to dynamically block Designated ports in addition to Alternate ports.

Answer: AB

NEW QUESTION 16

Refer to the exhibit.



Traffic is failing between Core-1 and Host-B. IP addressing has correctly been applied, and all interfaces are attached to the vrf GREEN. Which configuration will correct the issue?

- A. Core-2(config)# ip route 0.0.0.0/0 10.1.1.1 vrf GREEN Host-B: assign the default-gateway address 10.1.20.181
- B. Core-1(config)# ip route 10.1.20.0/24 10.1.1.2 vrf GREEN Host-B: assign the default-gateway address 10.1.20.181
- C. Core-1(config)# ip route 10.1.20.0/24 10.1.1.2 vrf GREEN Host-B: assign the default-gateway address 10.1.20.1
- D. Host-B: assign the default-gateway address 10.1.20.181

Answer: B

NEW QUESTION 21

What is an available command on an Aruba AOS-CX switch that would back up the secondary image to a secure remote repository?

- A. backup secondary sftp://admin@10.1.1.21/GL.10.04.0003.swi
- B. copy secondary sftp://admin@10.1.1.21/GL.10.04.0003.swi
- C. copy sftp://admin@10.1.1.21/GL.10.04.0003.swi secondary
- D. copy secondary tftp://admin@10.1.1.21/GL.10.04.0003.swi

Answer: B

NEW QUESTION 26

Refer to the exhibit

Access-1(config)# show vlan					
VLAN	Name	Status	Reason	Type	Interfaces
1	DEFAULT_VLAN_1	up	ok	default	1/1/1-1/1/28
50	Engineering	down	no_member_port	static	

What is true regarding VLAN 50 according to the diagram above?

- A. VLAN 50 is part of a switched virtual interface (SVI) that was never routed causing it to be down.
- B. Since VLAN 50 has not been assigned to any enabled physical port, the status is down.
- C. VLAN 50 is assigned only to Trunk ports which is why no ports are listed under interfaces.
- D. VLAN 50 was never added to the vlan-database and therefore is in a down state.

Answer: B

NEW QUESTION 27

DRAG DROP

Match the term to the correct description.

Term	Description
BGP	used for creating backup routes by implementing a higher administrative distance
Floating Static Routes	a distance vector protocol
OSPFv2	an ipv4 link-state routing protocol that runs within an Autonomous System
OSPFv3	used to route traffic between Autonomous Systems
RIPv2	a routing protocol capable of routing IPv6 packets

- A. Mastered
- B. Not Mastered

Answer: A

Explanation:

Term	Description	
BGP	Floating Static Routes	used for creating backup routes by implementing a higher administrative distance
Floating Static Routes	RIPv2	a distance vector protocol
OSPFv2	OSPFv2	an ipv4 link-state routing protocol that runs within an Autonomous System
OSPFv3	BGP	used to route traffic between Autonomous Systems
RIPv2	OSPFv3	a routing protocol capable of routing IPv6 packets

NEW QUESTION 29

Which two statements accurately describe the features of NetEdit? (Choose two.)

- A. NetEdit can be used to configure and validate any third-party device that supports SSH and REST access.
- B. NetEdit includes trial licensing for up to 10 nodes.
- C. NetEdit can perform configuration and compliance validation.
- D. NetEdit supports viewing and editing multiple devices using a single deployment plan.
- E. NetEdit can run on a mobile device using Android or Apple IOS.

Answer: CD

NEW QUESTION 34

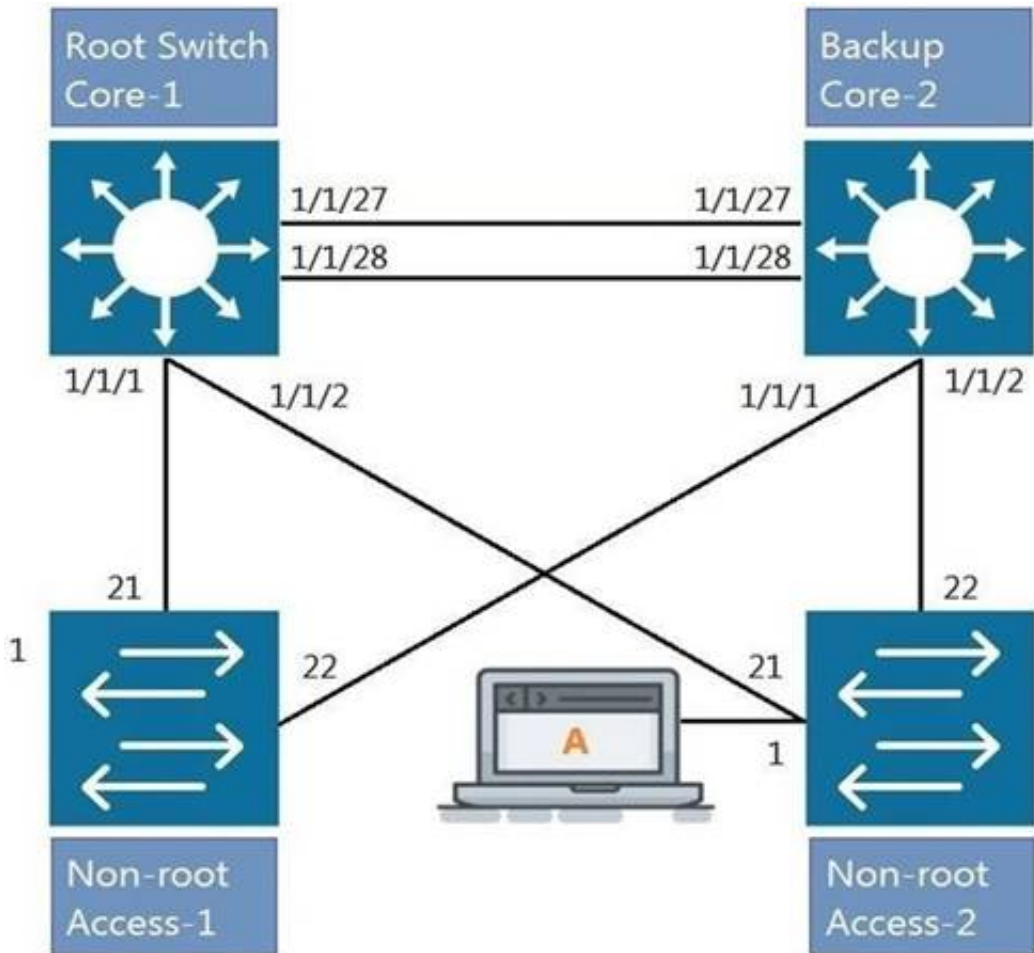
What are two mechanisms supported on AOS-CX 6300 switches used in Multi-active Detection to determine the status of the Primary member? (Choose two.)

- A. Management interface split detection
- B. Peer switch-based detection
- C. Loopback keepalives
- D. ARP-based
- E. BFD

Answer: AD

NEW QUESTION 37

Refer to the exhibit.



All four switches in the diagram have been configured with the region name "Aruba1".

What two other MSTP configurations must match for switches within the same MST region? (Choose two.)

- A. MST region type
- B. MST Bridge ID
- C. MST version number
- D. MST revision number
- E. MST VLAN to instance mapping

Answer: DE

NEW QUESTION 40

Which two types of routes can be found in the IP routing table of an Aruba AOS-CX switch? (Choose two.)

- A. Local
- B. EIGRP
- C. BGP
- D. ISIS
- E. RIPng

Answer: AC

NEW QUESTION 41

What are two methods for remotely managing an Aruba AOS-CX switch? (Choose two.)

- A. SNMPv2c
- B. HTTPS
- C. USB-C console
- D. Telnet
- E. SSHCorrect

Answer: BE

NEW QUESTION 45

Refer to the exhibit.

```
SW1# show vlan
```

VLAN	Name	Status	Reason	Type	Interfaces
1	DEFAULT_VLAN_1	up	ok	default	<output omitted>
10	Engineering	up	ok	static	1/1/1-1/1/7
20	Guest	up	ok	static	1/1/11-1/1/14

The above command was applied to an Aruba AOS-CX 6300M 24-port switch with 4-port SFP56 uplinks. All ports are set as access switchports. Which ports carry VLAN 1 traffic?

- A. 1/1/8, 1/1/10, 1/1/5-1/1/24
- B. 1/1/1-1/1/28
- C. 1/1/1-1/1/24
- D. 1/1/8-1/1/10, 1/1/5-1/1/28

Answer: D

NEW QUESTION 50

```
Core(config)# user admin password
```

```
Core(config)# interface mgmt
```

```
Core(config-if-mgmt)# ip static 10.254.16.89/22
```

```
Core(config-if-mgmt)# default-gateway 10.254.19.129
```

```
Core(config)# ssh server vrf mgmt
```

```
Core(config)# https-server vrf mgmt
```

You are tasked with configuring the Core switch to be managed by NetEdit. Currently, the Core switch is at factory-default settings. Which two steps are missing? (Choose two.)

- A. Core(config)# https-server rest access-mode read-write
- B. Core(config-if-mgmt)# no shutdown
- C. Core(config-if-mgmt)# no tftp-server
- D. Core(config-if-mgmt)# enable
- E. Core(config)# https-server rest access-mode read-only

Answer: AB

NEW QUESTION 55

Which two options are correct regarding the IEEE 802.11ax standard? (Choose two.)

- A. allows transmissions of up to 4.8Gbps
- B. is an emerging satellite connection standard to allow wireless access anywhere in the world
- C. operates only in the 5GHz similar to 802.11ac
- D. operates in both the 2.4GHz and 5GHz radios bands
- E. is the first WLAN standard to no longer use electromagnetic signals to transmit data

Answer: AD

NEW QUESTION 57

.....

Relate Links

100% Pass Your HPE6-A72 Exam with ExamBible Prep Materials

<https://www.exambible.com/HPE6-A72-exam/>

Contact us

We are proud of our high-quality customer service, which serves you around the clock 24/7.

Viste - <https://www.exambible.com/>