

Microsoft

Exam Questions PL-900

Microsoft Power Platform Fundamentals



NEW QUESTION 1

- (Exam Topic 1)

You are building Power Apps apps that use both Dynamics 365 Sales and Microsoft 365.

For each of the following statements, select Yes if the statement is true. Otherwise, select No. NOTE: Each correct selection is worth one point.

Statement	Yes	No
Dynamics 365 Sales and Microsoft 365 must be in the same tenant to allow Single Sign-On (SSO).	<input type="radio"/>	<input type="radio"/>
You must download a product from AppSource to ensure that SSO works with Dynamics 365 Sales and Microsoft 365.	<input type="radio"/>	<input type="radio"/>

- A. Mastered
- B. Not Mastered

Answer: A

Explanation:

Box 1: No

When you offer your application for use by other companies through a purchase or subscription, you make your application available to customers within their own Azure tenants. This is known as creating a multi-tenant application.

Box 2: No Reference:

<https://docs.microsoft.com/en-us/azure/active-directory/manage-apps/isv-sso-content>

NEW QUESTION 2

- (Exam Topic 1)

A rapidly growing company wants to empower users to build apps, automate business processes, and analyze data without requiring I expertise or development skills and without increasing IT expenses and dependencies.

You need to recommend tools so that users can accomplish specific tasks.

Which tools should you recommend? To answer, select the appropriate options in the answer area. NOTE: Each correct selection is worth one point.

Scenario	Application
Build automatic workflows that access multiple data sources.	<div><div></div><div>AI Builder</div><div>Power Apps</div><div>Microsoft Flow</div><div>Azure Functions</div><div>Power BI</div></div>
Create custom apps that address specific business needs.	<div><div></div><div>AI Builder</div><div>Power Apps</div><div>Microsoft Flow</div><div>Azure Functions</div><div>Power BI</div></div>
Design insightful data visualizations.	<div><div></div><div>AI Builder</div><div>Power Apps</div><div>Microsoft Flow</div><div>Azure Functions</div><div>Power BI</div></div>

- A. Mastered
- B. Not Mastered

Answer: A

Explanation:

Box 1: Microsoft Flow

Microsoft Flow, now called Power Automate, is cloud-based software that allows employees to create and automate workflows and tasks across multiple applications and services without help from developers.

Box 2: Power Apps

PowerApps is a suite of apps, services, connectors and data platform that provides a rapid application development environment to build custom apps for your business needs.

Box 3: Power BI

Power BI is a business analytics solution that lets you visualize your data and share insights across your organization, or embed them in your app or website.

Connect to hundreds of data sources and bring your data to life with live dashboards and reports.

Reference:

<https://docs.microsoft.com/en-us/powerapps/powerapps-overview>

NEW QUESTION 3

- (Exam Topic 1)

You create a user-owned custom entity by using Common Data Service.

For each of the following statements, select Yes if the statement is true. Otherwise, select No. NOTE: Each correct selection is worth one point.

Statement	Yes	No
You can change the entity ownership from User to Organization-owned.	<input type="radio"/>	<input type="radio"/>
You can create a business rule for a custom entity that can be used in a Flow.	<input type="radio"/>	<input type="radio"/>

- A. Mastered
B. Not Mastered

Answer: A

Explanation:

Box 1: No

Common Data Service supports two types of record ownership. Organization owned, and User or Team owned. This is a choice that happens at the time the entity is created and can't be changed.

Box 2: Yes

By combining conditions and actions, you can do any of the following with business rules: Set field values

Clear field values

Set field requirement levels Show or hide fields

Enable or disable fields

Validate data and show error messages

Create business recommendations based on business intelligence. Reference:

<https://docs.microsoft.com/en-us/power-platform/admin/wp-security-cds>

NEW QUESTION 4

- (Exam Topic 1)

A company uses Power Apps.

You need to perform administrative tasks for the company.

Which admin centers should you use? To answer, drag the appropriate admin centers to the correct requirements. Each admin center may be used once, more than once, or not at all. You may need to drag the split bar between panes or scroll to view content.

NOTE: Each correct selection is worth one point.

Admin centers	Requirement	Admin center
Azure Active Directory	Create user accounts for Power Apps.	Admin center
Dynamics 365 Admin center	Assign the Environment Maker role to a user.	Admin center
Power Apps Admin center		
Power BI Admin portal		

- A. Mastered
B. Not Mastered

Answer: A

Explanation:

Box 1: Azure Active Directory

Create the company users in the Azure Active Directory. Box 2: Power Apps admin center

In the Power Apps Admin center, manage environments that you've created and those for which you have been added to the Environment Admin or System Administrator role. From the admin center, you can perform these administrative actions:

Create environments. Rename environments.

Add or remove a user or group from either the Environment Admin or Environment Maker role. Etc.

Reference:

<https://docs.microsoft.com/en-us/power-platform/admin/environments-administration> <https://docs.microsoft.com/en-us/dynamics365/marketing/dynamics-365-admin-center> <https://powerapps.microsoft.com/sv-se/blog/introducing-admin-center-for-powerapps/>

NEW QUESTION 5

- (Exam Topic 1)

A company plans to implement Power Platform apps. The company does not plan to use any development tools or plug-ins.

Which actions can you perform?

For each of the following statements, select Yes if the statement is true. Otherwise, select No. NOTE: Each correct selection is worth one point.

Statement	Yes	No
You can synchronize account names with a third-party proprietary database.	<input type="radio"/>	<input type="radio"/>
You can create invoices from orders and then send the invoices to the customer.	<input type="radio"/>	<input type="radio"/>

- A. Mastered
B. Not Mastered

Answer: A

Explanation:

The Power Platform uses PowerApps, Power BI, and Power Automate (previously named Flow) to customize, extend, and build all the apps you need for your business and unlock the potential of Office 365 and Dynamics 365.

Reference:

<https://docs.microsoft.com/en-us/learn/powerplatform/>

NEW QUESTION 6

- (Exam Topic 1)

A company uses Dynamics 365 Sales. The company uses a browser-based app named Sales Hub. You need ensure that users can access data from mobile devices.

Which app should users install?

- A. Dynamics 365 Remote Assist
B. Dynamics 365 Finance
C. Dynamics 365 Business Central
D. Dynamics 365 for Phones

Answer: D

Explanation:

Use the Dynamics 365 for phones and Dynamics 365 for tablets apps for your sales, customer service, field service, and other tasks when you're on the go. With one download from your app store, you'll automatically have access to all the apps you need for your role. You will see apps with the new Unified Interface on your mobile device.

Reference:

<https://docs.microsoft.com/en-us/dynamics365/mobile-app/dynamics-365-phones-tablets-users-guide>

NEW QUESTION 7

- (Exam Topic 1)

You have version 1.0.0.0 of a published Power Apps app. You create and publish version 2.0.0.0 of the app. A customer goes through the process of restoring the previous version of the app.

How many versions of the app are displayed in the Version tab for the app? To answer, select the appropriate option in the answer area.

You will see versions of the app.

0
1
2

- A. Mastered
B. Not Mastered

Answer: A

Explanation:

Reference:

<https://docs.microsoft.com/en-us/powerapps/maker/canvas-apps/restore-an-app>

NEW QUESTION 8

- (Exam Topic 1)

This question requires that you evaluate the BOLD text to determine if it is correct.

You have a Power Apps app. You create a new version of the app and then publish the new version. A customer goes through the process of restoring the previous version of the app. In the Version tab for the app, you will see two versions of the app.

Review the underlined text. If it makes the statement correct, select "No change is needed." If the statement is incorrect, select the answer choice that makes the statement correct.

- A. No change is needed.
B. one
C. three

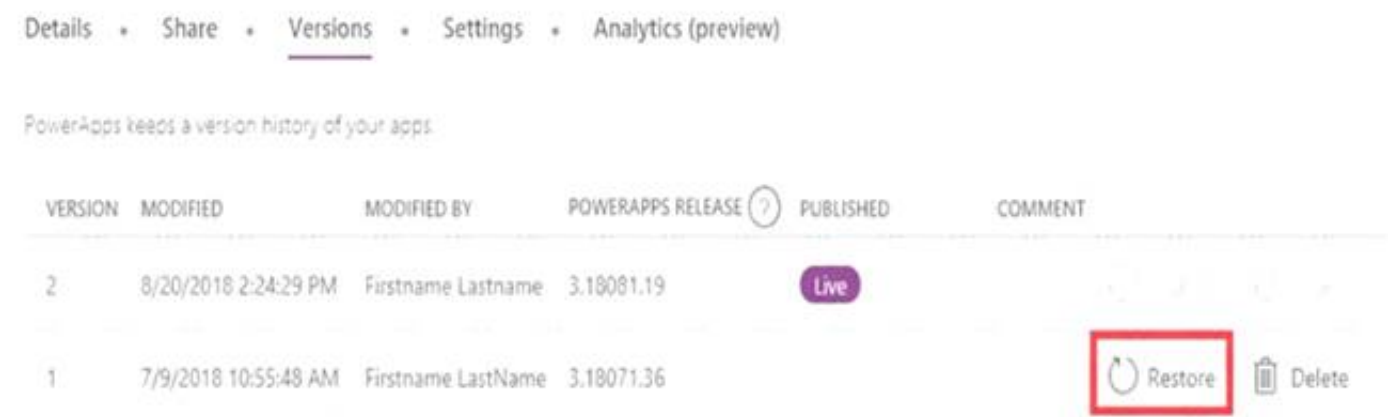
D. four

Answer: C

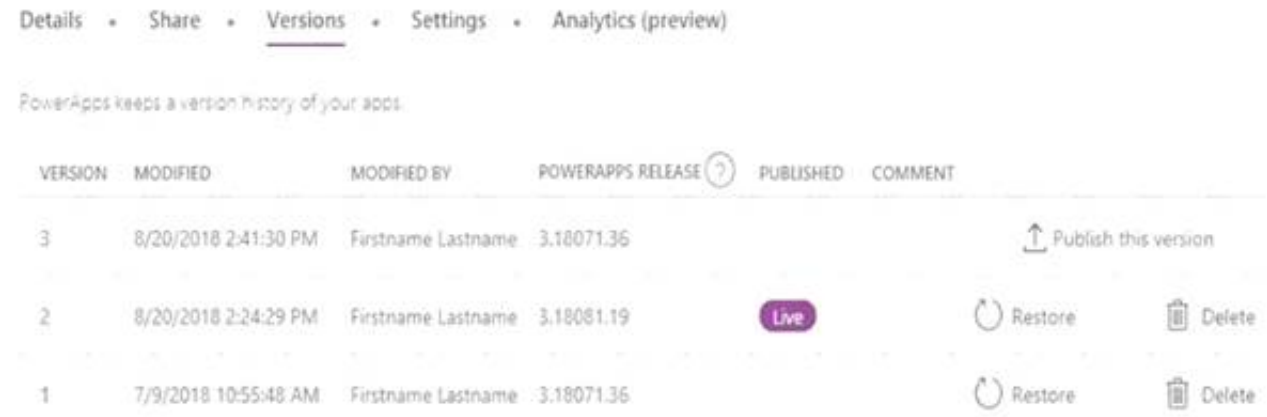
Explanation:

Restore a canvas app to a previous version in PowerApps.

- * 1. Open powerapps.com, and then click or tap Apps in the left navigation bar.
- * 2. Near the right edge, click or tap the info icon for the app that you want to restore.
- * 3. Click or tap the Versions tab, and then click or tap Restore for the version that you want to restore.



- * 4. In the confirmation dialog box, click or tap Restore. A new version is added to your list.



Reference:

<https://docs.microsoft.com/en-us/powerapps/maker/canvas-apps/restore-an-app>

NEW QUESTION 9

- (Exam Topic 1)

A distribution company has multiple warehouses.

Tax rates charged on sales orders need to be calculated based on locality and region. You need to recommend a cost-effective solution that can be implemented quickly. What should you recommend?

- A. Check AppSource for a tax add-on.
- B. Create alerts in Dynamics 365 Finance for tax table changes.
- C. Implement the Common Data Model.
- D. Run a Power BI report.
- E. Write scripts and code tax updates.

Answer: B

Explanation:

Reference:

<https://docs.microsoft.com/en-us/dynamics365/finance/general-ledger/indirect-taxes-overview>

NEW QUESTION 10

- (Exam Topic 1)

A company has locations in multiple regions. The company develops solutions based on Power Apps and Power Automate.

You need to recommend features to support the implementation.

Which Power Platform features should you recommend? To answer, drag the appropriate features to the correct requirements. Each feature may be used once, more than once, or not at all. You may need to drag the split bar between panes or scroll to view content.

NOTE: Each correct selection is worth one point.



- A. Mastered
- B. Not Mastered

Answer: A

Explanation:

Reference:
<https://docs.microsoft.com/en-us/power-platform/admin/environments-overview> <https://docs.microsoft.com/en-us/power-platform/admin/control-user-access>

NEW QUESTION 10

- (Exam Topic 1)

You need to explain the major components of the Common Data Model (CDM) and their functions. Match each term to its definition.
Instructions: To answer, drag the appropriate term from the column on the left to its definition on the right. Each term may be used once, more than once, or not at all. Each correct match is worth one point.
NOTE: Each correct selection is worth one point.

Tools		Answer Area
Entities	Purpose	Tool
Data connectors	Helps jumpstart application development by leveraging business logic, security, and integrations.	Tool
Common Data Service	A set of records used to store data.	Tool
Common Data Model		
Microsoft Power Platform		
Workflows		

- A. Mastered
- B. Not Mastered

Answer: A

Explanation:

Box 1: Microsoft Power Platform
Power Platform combines the robust power of PowerApps, PowerBI, and Microsoft Flow into one powerful business application platform – providing quick and easy app building and data insights. Each component of the Microsoft Power Platform is built on the Common Data Service for Apps. Each component is dynamic by itself, but brilliant and masterful when combined.
The Microsoft Power platform brings all your data together into a common data model. Box 2: Entities
An entity is a set of records used to store data, similar to how a table stores data within a database. Reference:
<https://community.dynamics.com/365/b/encloud9dynamicss365crm/posts/an-introduction-to-the-microsoft-pow> <https://docs.microsoft.com/en-us/powerapps/maker/common-data-service/data-platform-intro>

NEW QUESTION 12

- (Exam Topic 2)

A company plans to create a Common Data Service environment.
For each of the following statements, select Yes if the statement is true. Otherwise, select No. NOTE: Each correct selection is worth one point.

Statement	Yes	No
You can create a Common Data Service environment in the Power Platform Admin center.	<input type="radio"/>	<input type="radio"/>
You must enable data encryption after you create a Common Data Service environment.	<input type="radio"/>	<input type="radio"/>
You can control security roles and privileges in a Common Data Service Environment from the Power Apps Admin center.	<input type="radio"/>	<input type="radio"/>

- A. Mastered
- B. Not Mastered

Answer: A

Explanation:

Reference:
<https://docs.microsoft.com/en-us/power-platform/admin/create-database> <https://docs.microsoft.com/en-us/power-platform/admin/database-security>

NEW QUESTION 13

- (Exam Topic 2)

A manufacturing company is evaluating AI Builder.
You need to select AI Builder models to address specified requirements.
Which model types should you use? To answer, drag the appropriate model types to the correct requirements. Each model type may be used once, more than once, or not at all. You may need to drag the split bar between panes or scroll to view content.
NOTE: Each correct selection is worth one point.

Model types

prediction

form processing

object detection

Answer Area

Requirement

Identify products without labels or serial numbers.

Identify customers who might not pay their invoices on time.

Model type

model type

model type

- A. Mastered
- B. Not Mastered

Answer: A

Explanation:
Reference:
<https://docs.microsoft.com/en-us/ai-builder/object-detection-model-in-flow> <https://docs.microsoft.com/en-us/ai-builder/prediction-overview>

NEW QUESTION 18

- (Exam Topic 2)
You are creating a model-driven Power Apps app. You want to ensure that the app can be used by individuals who have vision impairments. For each of the following statements, select Yes if the statement is true. Otherwise, select No. NOTE: Each correct selection is worth one point.

Statement	Yes	No
Power Apps apps can be built with hot key support and designed so they do not require a touch screen or mouse.	<input type="radio"/>	<input type="radio"/>
Only model-driven Power Apps have support for using a screen reader without the need for a connector.	<input type="radio"/>	<input type="radio"/>
The accessibility checker can be run for your Power Apps app to provide notifications of accessibility violations as well as tips for making it even more user friendly.	<input type="radio"/>	<input type="radio"/>

- A. Mastered
- B. Not Mastered

Answer: A

Explanation:
Box 1: Yes
You can use keyboard shortcuts in PowerApps. Keyboard shortcuts give you an alternate way to do common tasks instead of using your mouse or tapping with your finger. They help in seamless navigation of the interface.
Box 2: No
The following software combinations are the supported recommendations for consuming PowerApps with a screen reader:
Windows: Microsoft Edge / Narrator macOS: Safari / VoiceOver Android: PowerApps app / Talkback iOS: PowerApps app / VoiceOver
Box 3: Yes
Users who have vision, hearing, or other impairments can use your canvas app more easily and successfully if you consider accessibility as you design how the app looks and behaves. If you're not sure how to make your app more accessible, you can run the Accessibility checker in PowerApps Studio. This tool not only finds potential accessibility issues but also explains why each might be a potential problem for users who have a specific disability and offers suggestions on how to resolve each issue. The Accessibility checker detects screen-reader and keyboard issues for you, and you can find information about how to fix color-contrast issues by using accessible colors.
Reference:
<https://docs.microsoft.com/en-us/powerapps/user/keyboard-shortcuts> <https://docs.microsoft.com/en-us/powerapps/user/screen-reader>
<https://docs.microsoft.com/en-us/powerapps/maker/canvas-apps/accessibility-checker>

NEW QUESTION 21

- (Exam Topic 2)
You create a business rule on contact entity to enforce the requirement that users must enter either a telephone number, fax number, or an email when creating a new record. The company decides to remove fax number from the condition. You need to update the business rule. What are two ways of achieving the goal? Each correct answer presents a complete solution. NOTE: Each correct selection is worth one point.

- A. Save a copy of the rule and change the condition.
- B. Deactivate and delete the original rule.
- C. Deactivate the business rule and change the condition.
- D. Take a snapshot of the business rule and change the condition.
- E. Change the condition and activate the change.

Answer: AD

Explanation:
Reference:
<https://docs.microsoft.com/en-us/powerapps/maker/canvas-apps/working-with-rules>

NEW QUESTION 25

- (Exam Topic 2)

A company plans to use Power BI to visualize data from business systems.

For each of the following statements, select Yes if the statement is true. Otherwise, select No. NOTE: Each correct selection is worth one point.

Statement	Yes	No
You can display data aggregates and raw data in a Power BI report.	<input type="radio"/>	<input type="radio"/>
You can display related data from Dynamics 365 Customer Engagement and Excel in the same Power BI report.	<input type="radio"/>	<input type="radio"/>
You create a Power App to supply data for a Power BI report. You can modify the data directly in the report.	<input type="radio"/>	<input type="radio"/>

- A. Mastered
B. Not Mastered

Answer: A

Explanation:

Box 1: Yes

The following list provides advantages to using aggregations:

Query performance over big data - as users interact with visuals on Power BI reports, DAX queries are submitted to the dataset. Boost query speeds by caching data at the aggregated level, using a fraction of the resources required at the detail level. Unlock big data in a way that would otherwise be impossible.

Box 2: No

You can connect to model-driven apps in Dynamics 365 with Power BI Desktop to create custom reports and dashboards for use with the Power BI service.

You can use similar steps to connect to model-driven apps in Dynamics 365 using Office Excel Power Query by selecting From Other Sources on the Power Query tab in Excel.

Box 3: Yes

Using the PowerApps custom visual, you will be able to pass context aware data to a PowerApps app which updates in real time as you make changes to your report.

Reference:

<https://docs.microsoft.com/en-us/power-bi/desktop-aggregations> <https://docs.microsoft.com/en-us/power-platform/admin/use-power-bi>

<https://powerapps.microsoft.com/sv-se/blog/powerbi-powerapps-visual/>

NEW QUESTION 28

- (Exam Topic 2)

You manage the support team at a rapidly growing company.

Support technicians need a better experience when logging and responding to support requests. You need to recommend tools to help the company's needs.

Which tools should you recommend? To answer, drag the appropriate tools to the correct requirements. Each tool may be used once, more than once, or not at all.

You may need to drag the split bar between panes or scroll to view content.

NOTE: Each correct selection is worth one point.

Tools	Requirement	Tool
Power Apps	Support technicians must be able to submit support requests by using an app.	<input type="text"/>
Power Automate	Customer data must be stored and synchronized with Dynamics 365 Finance.	<input type="text"/>
Power BI	Support technicians must be notified when a new support request is entered.	<input type="text"/>
Common Data Service		

- A. Mastered
B. Not Mastered

Answer: A

Explanation:

Reference:

<https://docs.microsoft.com/en-us/powerapps/maker/canvas-apps/help-desk-install> <https://docs.microsoft.com/en-us/power-platform/admin/data-integrator>

<https://docs.microsoft.com/en-us/power-automate/getting-started>

NEW QUESTION 29

- (Exam Topic 2)

A coworker is creating an app in Power Apps and needs to automatically synchronize data from an external source. The coworker is unable to locate a suitable Microsoft approved connector template in AppSource.

You need to recommend a solution for the coworker. What should you recommend?

- A. Create a custom connector.
B. Ask the outside source to send you the data once a week.
C. Use Microsoft Flow to connect to the database.

- D. Open a ticket with Microsoft and request a new connector.
- E. Use Microsoft Azure Service Bus.

Answer: A

Explanation:

There are 250 + predefined connectors that you can use in your PowerApps and in your Microsoft Flows. If you do not find any that suits your needs you have the possibility to create a Custom Connector.

Note: A Custom Connector is a wrapper around a REST API (Logic Apps also supports SOAP APIs) that allows Logic Apps, Microsoft Flow, or PowerApps to communicate with that REST or SOAP API.

Reference:

<https://carinaclaesson.com/2019/09/06/setting-up-a-custom-connector-from-an-openapi-file-and-utilizing-it-in-p>

NEW QUESTION 31

- (Exam Topic 2)

A company is evaluating ways that they can implement AI Builder.

For which two scenarios can you use AI Builder? Each correct selection presents a complete solution. NOTE: Each correct selection is worth one point.

- A. Send emails to all ai users who subscribe to a service.
- B. Synchronize data from an external database.
- C. Collect data from several data sources and display a dashboard that shows trending data.
- D. Interpret images and perform an action on the image.

Answer: BD

Explanation:

Reference:

<https://powerapps.microsoft.com/en-us/blog/introducing-ai-builder-for-powerplatform/>

NEW QUESTION 35

- (Exam Topic 2)

A company plans to implement solutions that use Common Data Service as a data storage. You need to recommend features to meet the company's needs.

Which features should you recommend? To answer, drag the appropriate features to the correct requirements. Each feature may be used once, more than once, or not at all. You may need to drag the split bar between panes or scroll to view content.

NOTE: Each correct selection is worth one point.

Features	Requirement	Feature
business rules		
business process flows	Validate data across multiple fields and entities regardless of the app used to create data.	Feature
Common Data Model	Create visual guides to ensure that users enter data and perform tasks in a consistent manner.	Feature
	Accelerate development by using a standard set of entities for the most common scenarios.	Feature

- A. Mastered
- B. Not Mastered

Answer: A

Explanation:

Box 1: business rules

You can create business rules and recommendations to apply logic and validations without writing code or creating plug-ins. Business rules provide a simple interface to implement and maintain fast-changing and commonly used rules.

Box 2: business process flows

Flows Power Automate includes several types of processes, each designed for a different purpose:

- Automated flows. Create a flow that performs one or more tasks automatically after it's triggered by an event.
- Button flows. Perform repetitive tasks simply by tapping a button on your mobile device.
- Scheduled flows. Create a flow that performs one or more tasks on a schedule such as once a day, on a specific date, or after a certain time.
- Business process flows. Ensure that people enter data consistently and follow the same steps every time they work in an app by creating a business process flow.
- Workflows and actions. Dynamics 365 customizers may be familiar with the classic Common Data Service processes, which are workflows and actions.

Box 3: Common Data Model

Model-driven app design is a component-focused approach to app development. Model-driven app design doesn't require code and the apps you make can be simple or very complex. Unlike canvas app development where the designer has complete control over app layout, with model-driven apps much of the layout is determined for you and largely designated by the components you add to the app.

Reference:

<https://docs.microsoft.com/en-us/powerapps/maker/model-driven-apps/guide-staff-through-common-tasks-proce> <https://docs.microsoft.com/en-us/powerapps/maker/model-driven-apps/model-driven-app-overview>

NEW QUESTION 40

- (Exam Topic 2)

A business is evaluating AI Builder. Which actions can you perform?

For each of the following statements, select Yes if the statement is true. Otherwise, select No. NOTE: Each correct selection is worth one point.

Statement	Yes	No
You can use a text classification model in AI Builder to retrieve text and perform sentiment analysis for ServiceNow incidents.	<input type="radio"/>	<input type="radio"/>
You can tag Instagram posts that mention your new product.	<input type="radio"/>	<input type="radio"/>
You can send results about the number of mentions of your new product in Instagram to Power BI for inclusion on a dashboard.	<input type="radio"/>	<input type="radio"/>

- A. Mastered
- B. Not Mastered

Answer: A

Explanation:

Reference:
<https://docs.microsoft.com/en-us/ai-builder/create-text-classification-model> <https://radacad.com/object-detector-app-with-ai-builder-and-power-apps>

NEW QUESTION 45

- (Exam Topic 3)
You create a Power BI dashboard.
Match each option to its function. To answer, drag the appropriate option from the column on the left to its function on the right. Each option may be used once, more than once, or not at all.
NOTE: Each correct match is worth one point.

Products

Share

Embed

Get Data

Pin

Import

Answer Area

Requirement	Product
Ensure that coworkers can see the dashboard.	<div></div>
Display data from Microsoft Excel in the dashboard.	<div></div>
Add a report tile to the dashboard.	<div></div>

- A. Mastered
- B. Not Mastered

Answer: A

Explanation:

Reference:
<https://docs.microsoft.com/en-us/power-bi/service-set-data-alerts> <https://docs.microsoft.com/en-us/power-bi/service-analyze-in-excel> <https://docs.microsoft.com/en-us/power-bi/service-dashboard-pin-tile-from-report>

NEW QUESTION 49

- (Exam Topic 3)
You are a sales representative. You create a Power BI report to visualize data from a Microsoft Excel workbook.
Users need to be able to view and share the report.
Which two actions should you perform? Each correct answer presents part of the solution. NOTE: Each correct selection is worth one point.

- A. Pin the report to a dashboard.
- B. Export the data.
- C. Publish the dashboard.
- D. Share the dashboard.

Answer: AD

Explanation:

Reference:
<https://docs.microsoft.com/en-us/power-bi/create-reports/service-dashboard-pin-live-tile-from-report> <https://docs.microsoft.com/en-us/power-bi/collaborate-share/service-share-dashboards#limitations-andconsidera>

NEW QUESTION 54

- (Exam Topic 3)
A company is using Power BI to build visualizations.
The company's IT support team needs to know when to install Power BI Desktop on users' computers and where the Power BI Service will suffice to perform tasks.
You need to recommend solutions for the company.
What should you recommend? To answer, drag the appropriate components to the correct requirements. Each component may be used once, more than once, or not at all. You may need to drag the split bar between panes or scroll to view content.

NOTE: Each correct selection is worth one point.

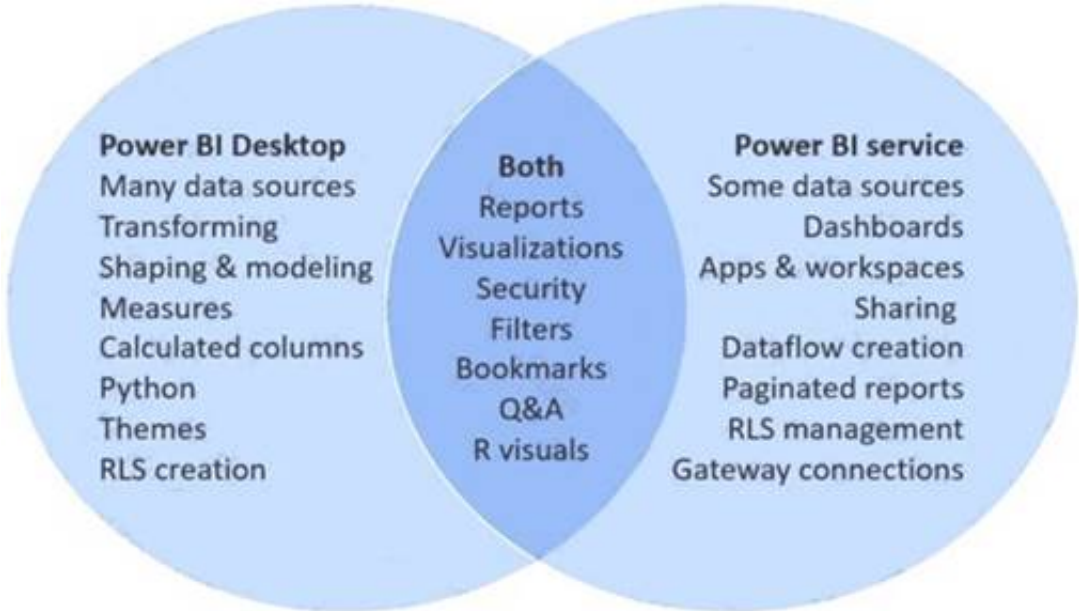
Tools	Answer Area	
	Requirement	Component
Power BI Service only	Create dashboards.	Tool
Power BI Desktop only	Create reports.	Tool
Power BI Desktop or Power BI Service	Create calculated columns.	Tool
	Configure security.	Tool
	Configure sharing.	Tool

- A. Mastered
- B. Not Mastered

Answer: A

Explanation:

In a Venn diagram comparing Power BI Desktop and the Power BI service, the area in the middle shows how the two overlap. Some tasks you can do in either Power BI Desktop or the service. The two sides of the Venn diagram show the features that are unique to the application and the service.



Reference:
<https://docs.microsoft.com/en-us/power-bi/designer/service-service-vs-desktop>

NEW QUESTION 59

- (Exam Topic 3)

A manufacturing company uses Internet of Things (IoT) devices to monitor the temperature in different parts of their warehouse. The current IoT monitoring software is extremely outdated and is not user friendly. You need to view near-real time information from the IoT devices in Power BI Service dashboards. Which tool should you use?

- A. Scheduled refresh dataset
- B. Streaming dataset
- C. Content Pack dataset
- D. Power BI dataflows
- E. Quick Insights

Answer: B

Explanation:

<https://docs.microsoft.com/en-us/power-bi/service-real-time-streaming>
<https://powerbi.microsoft.com/en-us/blog/using-power-bi-real-time-dashboards-to-display-iot-sensor-data-astep-by-step-tutorial/>

NEW QUESTION 61

- (Exam Topic 3)

A company needs to create a series of mobile applications to empower their field engineers to accomplish several tasks with varying degrees of complexity. Match each option to its answer.

Instructions: To answer, drag the appropriate app type from the column on the left to its definition on the right. Each app type may be used once, more than once, or not at all.

NOTE: Each correct match is worth one point.

App types	Answer Area	
	Definition	App type
model-driven	Quickly create apps for very complex business processes with very little or no code.	App type
dashboard		
dataset	Create simple apps with a highly customizable user interface layouts.	App type
canvas		

- A. Mastered
- B. Not Mastered

Answer: A

Explanation:

Box 1: canvas
Both model-driven and canvas apps allow you to easily build business apps. They both share access to the Common Data Service providing standard and custom entities. Canvas apps start with your user experience, crafting a highly tailored interface with the power of a blank canvas and connecting it to 200 data sources. Canvas apps can be built for web, mobile, and tablet applications. Model-driven apps start with your data model – building up from the shape of your core business data and processes in the Common Data Service to model forms, views, and other components. Model-driven apps automatically generate great UI that is responsive across devices.
Box 2: model-driven Reference:
<https://powerapps.microsoft.com/sv-se/blog/introducing-model-driven-apps/>

NEW QUESTION 65

- (Exam Topic 3)
You create reports within Power BI to report on the status of a project. A manager asks you to share the reports with other team members. You decide to create a published app and set permissions to allow other team members to view the reports.
For each of the following statements, select Yes if the statement is true. Otherwise, select No. NOTE: Each correct selection is worth one point.

Statement	Yes	No
The Power BI published app is stored within the Team site so that others can install it.	<input type="radio"/>	<input type="radio"/>
One of the other project managers installs and modifies a dashboard within the Power BI published app. The changes are automatically made into the original published app.	<input type="radio"/>	<input type="radio"/>

- A. Mastered
- B. Not Mastered

Answer: A

Explanation:

Reference:
<https://docs.microsoft.com/en-us/power-bi/collaborate-share/service-create-distribute-apps>

NEW QUESTION 70

- (Exam Topic 3)
You need to display sales orders greater than a specific threshold in a Power BI report. What should you use?

- A. Common Data Service
- B. connector
- C. Power Query
- D. filter

Answer: D

NEW QUESTION 74

- (Exam Topic 3)
You have a Power BI report.
For each of the following statements, select Yes if the statement is true. Otherwise, select No. NOTE: Each correct selection is worth one point.

Statement	Yes	No
You can export data from a visualization in a Power BI report.	<input type="radio"/>	<input type="radio"/>
You can show the data behind a visual report on your screen without exporting the data.	<input type="radio"/>	<input type="radio"/>
You must export data to view supporting data for a KPI.	<input type="radio"/>	<input type="radio"/>

- A. Mastered
B. Not Mastered

Answer: A

Explanation:

Box 1: Yes

If you'd like to see the data that Power BI uses to create a visualization, you can display that data in Power BI. You can also export that data to Excel as an .xlsx or .csv file. The option to export the data requires a Pro or Premium license and edit permissions to the dataset and report.

Note: Export data from a Power BI dashboard

- > Choose the Export data icon.
- > Power BI exports the data to a .csv file. If you've filtered the visualization, then the app will filter the downloaded data.
- > Your browser will prompt you to save the file. Once saved, open the .csv file in Excel.

Box 2: No

Underlying data: Select this option if you want to see the data in the visual and additional data from the model (see chart below for details). If your visualization has an aggregate, selecting Underlying data removes the aggregate. When you select Export, Power BI exports the data to an .xlsx file and your browser prompts you to save the file. Once saved, open the file in Excel.

Box 3: Yes

A KPI dataset needs to contain goal values for a KPI. If your dataset doesn't contain goal values, you can create them by adding an Excel sheet with goals to your data model or PBIX file.

Note: A Key Performance Indicator (KPI) is a visual cue that communicates the amount of progress made toward a measurable goal.

Reference:

<https://docs.microsoft.com/en-us/power-bi/visuals/power-bi-visualization-export-data>

<https://docs.microsoft.com/en-us/power-bi/visuals/power-bi-visualization-kpi>

NEW QUESTION 79

- (Exam Topic 3)

A company runs a call center to handle customer support inquiries.

The company tracks metrics including the number of incoming calls, call resolution rates, and escalations. The company wants to display the metrics on a shared screen that is visible to all call center staff.

You need to recommend a solution for the company. Which Power Platform feature should you recommend?

- A. AI Builder
B. Power Automate
C. Power Apps
D. Power BI

Answer: D

NEW QUESTION 83

- (Exam Topic 3)

A company manages a chain of retail stores. The company stores a list of retail store names and numbers in one Power BI table. The company stores sales transaction data including a transaction ID in another table.

The transaction ID includes the store number.

You need to show the store name for all retail transactions in all Power BI reports. Which tool should you use?

- A. Query Editor
B. Power BI Service
C. Microsoft Excel
D. Data Connector

Answer: A

Explanation:

Power BI Desktop comes with Query Editor, where you can connect to one or many data sources, shape and transform the data to meet your needs, then load that model into Power BI Desktop.

Reference:

<https://docs.microsoft.com/en-us/power-bi/desktop-query-overview>

NEW QUESTION 86

- (Exam Topic 3)

Your company has an on premises Microsoft SQL Server database that contains legacy sales data. You must display information from the database in a new Power Apps app.

You need to establish a secure connection between the database and the app. What should you use?

- A. Data source
- B. App
- C. Gateway
- D. Flow

Answer: C

Explanation:

For an on-premises database, identify a data gateway that was shared with you (or create one).

Specify Connect using on-premises data gateway, type or paste the server name, the database name, the user name, and the password for the database that you want to use, and specify the authentication type and the gateway.

Reference:

<https://docs.microsoft.com/en-us/powerapps/maker/canvas-apps/connections/connection-azure-sqldatabase>

NEW QUESTION 89

- (Exam Topic 4)

A company publishes e-books for independent authors.

The company wants to implement a Power Apps portal solution to make announcements about upcoming books to the general public.

You need to recommend features for the company.

Which features should you use? To answer, select the appropriate options in the answer area. NOTE: Each correct selection is worth one point.

Requirement	
Ensure that book authors can securely access their data.	<input type="checkbox"/> <div>Authenticate external users. Access data in Common Data Service. Use page templates. Browse content anonymously.</div>
Ensure consistent page design across the website.	<input type="checkbox"/> <div>Authenticate external users. Access data in Common Data Service. Use page templates. Browse content anonymously.</div>
Ensure that the public can access announcements about upcoming	<input type="checkbox"/> <div>Authenticate external users. Use page templates. Browse content anonymously.</div>

- A. Mastered
- B. Not Mastered

Answer: A

Explanation:

Reference:

<https://www.onactuate.com/upgrades/what-is-the-new-powerapps-portal/> <https://docs.microsoft.com/en-us/powerapps/maker/portals/configure/page-templates>

NEW QUESTION 92

- (Exam Topic 4)

A company is creating a canvas app to display data from a legacy system that is located on the company's internal network.

You need to connect to the data. What should you use?

- A. custom connector
- B. content pack
- C. data gateway
- D. Power Automate

Answer: C

Explanation:

<https://docs.microsoft.com/en-us/powerapps/maker/canvas-apps/gateway-management>

NEW QUESTION 94

- (Exam Topic 4)

You are creating a model-driven app to track requests for quotes. The app must use the following navigation structure:

- Sales
- > Sales Log
 - > Request for Quotes
 - > Projects
 - > Settings
 - > Customers
 - > Product Lines
 - > Sales Territories
- Administration
- > User Admin
 - > Users
 - > Roles

You need to create the app navigation.

Which sitemap component types should you use? To answer, drag the appropriate component types to the correct navigation elements. Each component type may be used once, more than once, or not at all. You may need to drag the split bar between panes or scroll to view content.

NOTE: Each correct selection is worth one point.

Component types	Answer Area	
<div>Area</div>	<div>Navigation element</div>	<div>Component type</div>
<div>Group</div>	<div>Administration</div>	<div>Component type</div>
<div>Subarea</div>	<div>Sales log</div>	<div>Component type</div>
	<div>Customers</div>	<div>Component type</div>

- A. Mastered
- B. Not Mastered

Answer: A

Explanation:

Reference:
<https://docs.microsoft.com/en-us/dynamics365/customerengagement/on-premises/developer/customize-dev/chan>

NEW QUESTION 99

- (Exam Topic 4)
A company plans to implement Power Apps in a Power Platform environment. You need to implement other required components. Match each option to its function. To answer, drag the appropriate option from the column on the left to its function on the right. Each option may be used once, more than once, or not at all.
NOTE: Each correct match is worth one point.

Products	Answer Area	
	Function	Product
<div>Microsoft Azure</div>	<div>Implement user authentication.</div>	<div></div>
<div>custom connector</div>	<div>Send data to a Microsoft OneNote notebook in the same tenant.</div>	<div></div>
<div>Microsoft Flow</div>		
<div>model-driven app</div>		
<div>canvas app</div>		

- A. Mastered
- B. Not Mastered

Answer: A

Explanation:

Reference:
<https://powerapps.microsoft.com/en-us/blog/implementing-role-based-permission/> <https://www.encorebusiness.com/blog/powerapps-flow-can/>

NEW QUESTION 102

- (Exam Topic 4)
A company has a Power Apps app that is used by most employees. The company is expanding to other countries/regions. You need to recommend a solution to translate text generated within the Power Apps in near real-time. What should you recommend?

- A. Microsoft Azure Synapse Analytics
- B. Microsoft Azure Cognitive Services
- C. Common Data Service connector
- D. Power BI

Answer: B

Explanation:

Reference:
https://docs.microsoft.com/en-gb/azure/cognitive-services/welcome?_id=AID2339762_TWITTER_oo_spl100000827964250
<https://powerapps.microsoft.com/en-us/blog/cognitive-services-with-powerapps-using-custom-connectors/>

NEW QUESTION 107

- (Exam Topic 4)
A company is building a Power Apps Portals. You need to select page components. Which components should you use? To answer, drag the appropriate components to the correct requirements. Each component may be used once, more than once, or not at all. You may need to drag the split bar between panes or scroll to view content. NOTE: Each correct selection is worth one point.

Components	Answer Area								
<div>list</div> <div>form</div> <div>Iframe</div> <div>connector</div>	<table border="1"><thead><tr><th>Requirement</th><th>Component</th></tr></thead><tbody><tr><td>Display a single record from Common Data Service.</td><td><div>Component</div></td></tr><tr><td>Display a list of records from a Microsoft SharePoint list.</td><td><div>Component</div></td></tr><tr><td>Display a list of records from Common Data Service.</td><td><div>Component</div></td></tr></tbody></table>	Requirement	Component	Display a single record from Common Data Service.	<div>Component</div>	Display a list of records from a Microsoft SharePoint list.	<div>Component</div>	Display a list of records from Common Data Service.	<div>Component</div>
Requirement	Component								
Display a single record from Common Data Service.	<div>Component</div>								
Display a list of records from a Microsoft SharePoint list.	<div>Component</div>								
Display a list of records from Common Data Service.	<div>Component</div>								

- A. Mastered
B. Not Mastered

Answer: A

Explanation:

Reference:

<https://docs.microsoft.com/en-us/powerapps/maker/portals/compose-page>

<https://docs.microsoft.com/en-us/powerapps/maker/portals/compose-page#add-iframe>

NEW QUESTION 111

- (Exam Topic 4)

A company plans to create canvas apps.

What is the minimum number of connectors required? To answer, drag the appropriate number of connectors to the correct drop scenarios. Each number of connectors may be used once, more than once, or not at all. You may need to drag the split bar between panes or scroll to view content.

NOTE: Each correct selection is worth one point.

Number of connectors	Answer Area								
<div>0</div> <div>1</div> <div>2</div> <div>3</div>	<table border="1"><thead><tr><th>Scenario</th><th>Number of connectors</th></tr></thead><tbody><tr><td>Synchronize data with three data sources that use different proprietary database formats.</td><td><div></div></td></tr><tr><td>Create three Power Apps apps that each display data from a Microsoft SharePoint list.</td><td><div></div></td></tr><tr><td>Create three Flows that each copy data to Microsoft Azure Data Lake on different schedules.</td><td><div></div></td></tr></tbody></table>	Scenario	Number of connectors	Synchronize data with three data sources that use different proprietary database formats.	<div></div>	Create three Power Apps apps that each display data from a Microsoft SharePoint list.	<div></div>	Create three Flows that each copy data to Microsoft Azure Data Lake on different schedules.	<div></div>
Scenario	Number of connectors								
Synchronize data with three data sources that use different proprietary database formats.	<div></div>								
Create three Power Apps apps that each display data from a Microsoft SharePoint list.	<div></div>								
Create three Flows that each copy data to Microsoft Azure Data Lake on different schedules.	<div></div>								

- A. Mastered
B. Not Mastered

Answer: A

Explanation:

Reference:

<https://docs.microsoft.com/en-us/powerapps/maker/canvas-apps/connections-list> <https://docs.microsoft.com/en-us/connectors/connectors>

NEW QUESTION 112

- (Exam Topic 5)

You are new to working with Microsoft Flow. You create a flow that extracts birth dates for users and then sends a birthday greeting email to users on their birthday.

The flow does not properly extract birth dates. Where should you make changes?

- A. Connectors
B. Expression
C. Templates

Answer: A

Explanation:

Select the new Date Time connector. There you will see all of the actions, which help you to convert time zones to format them for local time in an email, add or subtract times, or just get the current time.

Reference:

<https://flow.microsoft.com/en-us/blog/nested-apply-to-each/>

NEW QUESTION 116

- (Exam Topic 5)

You are building a Power Virtual Agents chatbot for a company.

You are working with an existing topic and would like to call an action.

Which technology is available to perform the action?

- A. Power Virtual Agent Entity
B. Power Apps
C. Power Automate

D. Power BI

Answer: B

NEW QUESTION 118

- (Exam Topic 5)

You are building a Power Automate flow to manage sales.

The sales team saves quotes as PDF files to a Microsoft OneDrive folder. You create a Microsoft SharePoint list to help the sales team manage follow ups to quotes. You need to copy the customer name, phone number, and the amount of the potential sale from the sales quote and insert the data into the SharePoint list. Which AI Builder model should you use?

- A. key phrase extraction
- B. sentiment analysis OC.
- C. text recognition
- D. language detection

Answer: C

Explanation:

Reference:

<https://docs.microsoft.com/en-us/ai-builder/prebuilt-text-recognition>

NEW QUESTION 123

- (Exam Topic 5)

A company plans to implement Power Apps.

For each of the following statements, select Yes if the statement is true. Otherwise, select No. NOTE: Each correct selection is worth one point.

Answer Area		
Statement	Yes	No
Building Power Apps apps requires proficiency in JavaScript programming.	<input type="radio"/>	<input type="radio"/>
You must select one of the app templates to create an app.	<input type="radio"/>	<input type="radio"/>

- A. Mastered
- B. Not Mastered

Answer: A

Explanation:

Reference:

<https://docs.microsoft.com/en-us/powerapps/maker/>

NEW QUESTION 127

- (Exam Topic 5)

You are creating a canvas app that uses one connector.

Which two objects are provided to Power Apps by the connector? Each correct answer presents a complete solution.

NOTE: Each correct selection is worth one point.

- A. tables
- B. customizations
- C. triggers
- D. actions

Answer: AD

NEW QUESTION 131

- (Exam Topic 5)

You need to use Microsoft Flow to perform data-management tasks when users interact with the sales opportunities in Dynamics 365.

Which three types of triggers can you use? Each correct answer presents a complete solution. NOTE: Each correct selection is worth one point.

- A. record requested
- B. record deletion
- C. record creation
- D. record updated
- E. record selected

Answer: BCD

Explanation:

Triggers like When a record is created, When a record is updated, and When a record is deleted initiate your flow within a few minutes of the event occurring. In rare cases, your flow can take up to 2 hours to trigger.

Reference:

<https://docs.microsoft.com/en-us/power-automate/connection-dynamics365>

NEW QUESTION 135

- (Exam Topic 5)

You are learning about Power Apps and how to use triggers.

Which objects should you use? To answer, select the appropriate options in the answer area. NOTE: Each correct selection is worth one point.

Answer Area

Statement	Component
A Power Apps app can trigger this when a condition is met.	<div>connector</div> <div>Power Automate flow</div> <div>gateway</div> <div>solution</div>
Actions and triggers are properties of a	<div>connector</div> <div>gateway</div> <div>solution</div>

- A. Mastered
- B. Not Mastered

Answer: A

Explanation:

Answer Area

Statement	Component
A Power Apps app can trigger this when a condition is met.	<div>Power Automate flow</div>
Actions and triggers are properties of a	<div>connector</div>

NEW QUESTION 139

- (Exam Topic 5)

You build a flow using a template. You want to add support for additional business scenarios. You need to ensure that the new workflow does not break existing functionality.

Which flow editing utilities should you use? To answer, drag the appropriate tools to the correct requirements. Each tool may be used once, more than once, or not at all You may need to drag the split bar between panes or scroll to view content.

NOTE: Each correct selection is worth one point.

Tools	Requirement	Tool
<div>Test</div>	Check the new flow for any errors or warnings.	<div>Tool</div>
<div>Flow Checker</div>	Run the flow using previously processed data.	<div>Tool</div>
	Monitor the flow as it is running.	<div>Tool</div>

- A. Mastered
- B. Not Mastered

Answer: A

Explanation:

Box 1: Flow Checker

The Flow checker feature will promote higher quality flows by ensuring you follow best practices. By running the checker, you will be able to get answers to questions like: which areas of my flow implementation pose a performance or reliability risk?

For each issue identified, the Flow checker points to specific occurrences within the flow where improvements may be required. And more importantly, you learn how to implement these improvements by following detailed guidance.

Box 2: Test

Box 3: Test Reference:

<https://flow.microsoft.com/en-us/blog/flow-checker-four-connectors/> <https://docs.microsoft.com/en-us/power-automate/modern-approvals>

NEW QUESTION 140

- (Exam Topic 5)

A company uses Dynamics 365 Supply Chain Management.

When a sales order is created for one of the customers that a specific user manages, a Microsoft Outlook task must be created to remind the user to perform any follow up activities that are required.

You need to implement the functionality to create Outlook tasks.

Which two features should you use? Each correct answer presents part of the solution. NOTE: Each correct selection is worth one point.

- A. AI Builder
- B. Power Apps
- C. Business Events
- D. Microsoft Flow
- E. Common Data Service

Answer: CD

Explanation:

Business events in Microsoft Power Automate

Business events can be consumed in Microsoft Power Automate via the application connector. The connector has a trigger that is named when a business event occurs. This trigger can be used to subscribe to any of the business events that are available in the target instance of the application.

Reference:

<https://docs.microsoft.com/en-us/dynamics365/fin-ops-core/dev-itpro/business-events/business-events-flow>

NEW QUESTION 143

- (Exam Topic 5)

A company uses Dynamics 365 Supply Chain Management and Dynamics 365 Finance. User account data must be synchronized between the two system. You need to ensure that the synchronized data is stored in one place. What should you use?

- A. SQLServer
- B. Common Data Service
- C. Azure Active Directory
- D. Azure IoT Central

Answer: B

Explanation:

Reference:

<https://docs.microsoft.com/en-us/power-platform/admin/data-integrator>

NEW QUESTION 148

- (Exam Topic 5)

A company uses Dynamics 365 Customer Service. The company uses a manual process to manage call escalations. You must use Power Automate to automate the process for routing escalated calls. You need to create the flow. Which type of connector should you use?

- A. Microsoft Excel
- B. Common Data Service
- C. Office 365 Users

Answer: B

NEW QUESTION 149

- (Exam Topic 5)

You plan to use Power Automate to perform data-management tasks when users interact with sales opportunities in Dynamics 365.

You need to identify the three types of events that can generate a trigger for the tasks.

Which three types of events should you identify? Each correct answer presents a complete solution. NOTE: Each correct selection is worth one point.

- A. when a record is displayed in a view
- B. when a record is deleted
- C. when a record is created
- D. when a record is updated
- E. when a record is read

Answer: BCD

Explanation:

Triggers like When a record is created, When a record is updated, and When a record is deleted initiate your flow within a few minutes of the event occurring. In rare cases, your flow can take up to 2 hours to trigger.

Reference:

<https://docs.microsoft.com/en-us/power-automate/connection-dynamics365>

NEW QUESTION 150

- (Exam Topic 5)

This question requires that you evaluate the BOLD text to determine if it is correct.

A company requires that service representatives schedule customer visits every six months. Each service representative is required to enter a scheduled task for the next checkup as they are leaving a client site. A service representative wants to automate task entry by creating a business process flow that can be initiated from the service call screen on a phone.

Review the underlined text. If it makes the statement correct, select "No change is needed." If the statement is incorrect, select the answer choice that makes the statement correct.

- A. No change is needed.
- B. a scheduled
- C. an instant
- D. an action

Answer: D

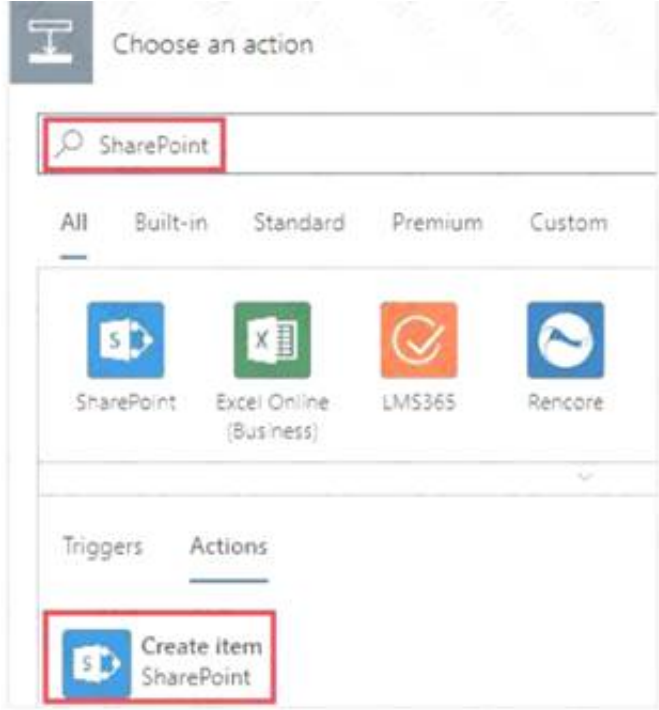
Explanation:

Note: Create a flow (see step 6 below)

- * 1. Sign in to PowerApps.
- * 2. In the left navigation bar, select Business logic, and then select Flows.
- * 3. In the upper-left corner of the My Flows page, select New, and then select Create from blank.
- * 4. Option to create a flow without using a template

Near the bottom of the page that appears, select Search hundreds of connections and triggers.

- * 5. In the search box, type PowerApps, and then select the PowerApps icon.
- * 6. Create a PowerApps trigger
- * 7. On the next page, select the PowerApps icon again, and then select New step.
- * 8. In the box that says Search connectors and actions, specify an action for your flow, as in this example:



Reference:

<https://docs.microsoft.com/en-us/powerapps/maker/canvas-apps/using-logic-flows>

NEW QUESTION 151

- (Exam Topic 5)

For which scenarios can you use Power Automate?

For each of the following statements, select Yes if the statement is true. Otherwise, select No. NOTE: Each correct selection is worth one point.

Statement	Yes	No
Notify team members when a response is recorded in a form in Microsoft Forms.	<input type="radio"/>	<input type="radio"/>
When email is received, save email attachments to OneDrive for Business.	<input type="radio"/>	<input type="radio"/>
Receive notifications when negative comments about the company are posted on Twitter.	<input type="radio"/>	<input type="radio"/>

- A. Mastered
- B. Not Mastered

Answer: A

Explanation:

Reference:

<https://flow.microsoft.com/en-us/galleries/public/templates/b923bbd04bda11e78896d10a96d3fac3/notify-the-tea> <https://flow.microsoft.com/en-us/galleries/public/templates/65ceb79430ef4956a0855fbe09249cdf/save-office-36> <https://flow.microsoft.com/en-us/blog/get-notified-of-negative-posts/>

NEW QUESTION 152

- (Exam Topic 5)

A company plans to use Microsoft Flow to automate tasks.

Match each flow type to its function. To answer, drag the appropriate flow type from the column on the left to its description on the right. Each option may be used once, more than once, or not at all.

NOTE: Each correct match is worth one point.

Flow types	Answer Area	
	Description	Flow type
automated		Flow type
business process	a flow that runs after it is triggered by an event	Flow type
scheduled	a flow that guides a user through a set of tasks	Flow type
instant	a flow that runs after a specified number of days	Flow type
	a flow that allows you to start tasks on-demand	Flow type

- A. Mastered
B. Not Mastered

Answer: A

Explanation:

Box 1: automated

Automated flows start with an event or trigger, such as an email being received. These also support a multitude of actions in the 200+ Flow connectors.

Box 2: business process

The business process flow that creates stages or screens that enforce a certain sequence of steps. It collects data from users for each step in the stage and can kick off automated workflows.

Box 3: scheduled

Scheduled flows run regular reports that are sent out to a team and summarize everything that's happened in the past week. This includes everything from simple daily scheduling to more complex scheduling like "every 3rd Monday."

Box 4: instant

An instant flow is triggered when you click a button inside of the Flow mobile app, SharePoint, Dynamics, PowerApps, or Excel that passes context directly into your flow.

Note: There are four different Flow types that you can choose from when starting out. You can create a scheduled flow, automated flow, instant flow, or a business process flow.

Reference:

<https://www.avepoint.com/blog/office-365/office-365-automation/>

NEW QUESTION 154

- (Exam Topic 5)

A company performs on-site inspections and services for air industrial equipment.

Field technicians must perform a series of maintenance checks every time they visit a customer site. Every technician performs maintenance tasks in a different order. Some technicians miss steps.

You need to ensure that all technicians perform the same steps in the same order. What should you use?

- A. Business process flow
B. AI Builder
C. Business rule
D. Virtual Agent

Answer: A

Explanation:

You can help ensure that people enter data consistently and follow the same steps every time they work with a customer by creating a business process flow. For example, you might want to create a business process flow to have everyone handle customer service requests the same way, or to require that people get approval for an invoice before submitting an order. Business process flows use the same underlying technology as other processes, but the capabilities that they provide are very different from other features that use processes.

Reference:

<https://docs.microsoft.com/en-us/power-automate/business-process-flows-overview>

NEW QUESTION 156

- (Exam Topic 5)

A company has a website. The website includes a form that allows the company to collect information about leads.

You need to set up an automated workflow to create leads in Dynamics 365 Sales when leads are created on the company's custom website.

What should you create?

- A. Task Flow
B. Power Automate flow
C. Dynamics 365 workflow
D. Business Process Flow

Answer: B

Explanation:

Reference:

<https://trellispoint.com/create-crm-leads-using-microsoft-flow/>

NEW QUESTION 157

- (Exam Topic 5)

You use Microsoft Flow to create a flow that automatically sends email to a project manager when project team members mark a task as complete.

Project team members are prematurely marking tasks as complete. You must add quality control into the process by sending an email to a project lead for confirmation that the task is in fact complete before sending the email to the project manager.

You need to modify the flow. Which component should you use?

- A. a process argument
- B. a condition
- C. an expression
- D. a trigger
- E. an action

Answer: B

Explanation:

Use a condition and set the action to send an email. Reference:
<https://docs.microsoft.com/en-us/power-automate/add-condition>

NEW QUESTION 161

- (Exam Topic 6)

You need to create a mobile application which will allow sales associates to enter customer sales leads. Which four actions should you perform in sequence? To answer, move the appropriate actions from the list of actions to the answer area and arrange them in the correct order.

Actions

Save the app.

Add components to the app.

Publish the app.

Add flows to the app.

Go to the Office 365 admin center.

Create a new Power Apps app.

>

<

Answer area

^

v

- A. Mastered
- B. Not Mastered

Answer: A

Explanation:

Reference:
<https://docs.microsoft.com/en-us/powerapps/maker/model-driven-apps/build-first-model-driven-app>

NEW QUESTION 166

- (Exam Topic 6)

You are planning to allow members of your team to test your chatbot. You must ensure this is done in a secure way. A team member named User1 must test the chatbot. You need to ensure that User1 can complete testing. What should you do?

- A. Sign in to the authoring environment as the chatbot author.
- B. Sign in to Microsoft Azure DevOps as the chatbot author.
- C. Sign in to Microsoft Azure DevOps as User1.
- D. Sign in to the authoring environment as User1.

Answer: A

NEW QUESTION 168

- (Exam Topic 6)

You are creating a model-driven app. For each of the following statements, select Yes if the statement is true. Otherwise, select No. NOTE: Each correct selection is worth one point.

Statements	Yes	No
To add entities to an app, entities are dragged onto the app canvas from the components area.	<input type="radio"/>	<input type="radio"/>
View definition is created in the component area of the app designer.	<input type="radio"/>	<input type="radio"/>
You must save, validate, and publish your app for others to see the changes.	<input type="radio"/>	<input type="radio"/>

- A. Mastered
- B. Not Mastered

Answer: A

Explanation:

Reference:
<https://docs.microsoft.com/en-us/powerapps/maker/model-driven-apps/build-first-model-driven-app> <https://docs.microsoft.com/en-us/powerapps/maker/model-driven-apps/validate-app>

NEW QUESTION 170

- (Exam Topic 6)
A company uses Dynamics 365 Supply Chain Management.
When a sales order is created for one of the customers that a specific user manages, a Microsoft Outlook task must be created to remind the user to perform any follow up activities that are required.
You need to implement the functionality to create Outlook tasks. Which feature should you use?

- A. Power Automate
- B. AI Builder
- C. Power BI
- D. Business Events
- E. Common Data Service

Answer: A

NEW QUESTION 172

- (Exam Topic 6)
You need to implement Microsoft Business Applications along with the Microsoft Power Platform.
Which three Microsoft products are pan of the Power Platform? Each correct answer presents a complete solution.
NOTE: Each correct selection is worth one point.

- A. Power Apps
- B. Azure Active Directory
- C. Power Automate
- D. Azure Machine learning
- E. Power BI

Answer: ACE

NEW QUESTION 177

- (Exam Topic 6)
You want to create a Power Apps app that allows you to define a custom Sitemap. What should you do? To answer, select the appropriate options in the answer area.

Navigate to the Power Apps portal and create

a canvas app.

a model-driven app.

a portal app.

an app by using a template.

- A. Mastered
- B. Not Mastered

Answer: A

Explanation:

Reference:
<https://docs.microsoft.com/en-us/powerapps/powerapps-overview>

NEW QUESTION 180

- (Exam Topic 6)
You are creating a model-driven app. You need to add forms to the app.
Which form types should you use> To answer, select the appropriate options in the answer area.
NOTE: Each correct selection is worth one point.

Requirement	Form type
a compact form for mobile devices	<div><div></div><div>Card Quick Create Quick View</div></div>
a basic form for data entry	<div><div></div><div>Main Quick Create Quick View</div></div>
a compact form for use in web clients to edit records	<div><div></div><div>Advanced Find Views Associated Views Lookup Views Public Views</div></div>

- A. Mastered
- B. Not Mastered

Answer: A

Explanation:

Requirement	Form type
a compact form for mobile devices	<div>Card</div> <div>Quick Create</div> <div>Quick View</div>
a basic form for data entry	<div>Main</div> <div>Quick Create</div> <div>Quick View</div>
a compact form for use in web clients to edit records	<div>Advanced Find Views</div> <div>Associated Views</div> <div>Lookup Views</div> <div>Public Views</div>

NEW QUESTION 181

- (Exam Topic 6)

A company plans to build solutions by using Power Platform technologies.

For each of the following statements, select Yes if the statement Is true. Otherwise, select No. NOTE: Each correct selection is worth one point.

Statement	Yes	No
Power Virtual Agents chat data is saved unless it is deleted by the customer after a chat session.	<input type="radio"/>	<input type="radio"/>
Power Automate flows operate with administrative privileges at all times.	<input type="radio"/>	<input type="radio"/>

- A. Mastered
- B. Not Mastered

Answer: A

Explanation:

Statement	Yes	No
Power Virtual Agents chat data is saved unless it is deleted by the customer after a chat session.	<input checked="" type="radio"/>	<input type="radio"/>
Power Automate flows operate with administrative privileges at all times.	<input type="radio"/>	<input checked="" type="radio"/>

NEW QUESTION 186

- (Exam Topic 6)

You create a Power BI dashboard.

Match each option to its requirement. To answer, drag the appropriate option from the column on the left to the correct requirement on the right. Each option may be used once, more than once, or not at all.

NOTE: Each correct match is worth one point.

Options	Requirement	Option
Share	Ensure that coworkers can see the dashboard.	Option
Embed	Display data from Microsoft Excel in the dashboard.	Option
Get Data	Add a report tile to the dashboard.	Option
Pin		

- A. Mastered
- B. Not Mastered

Answer: A

Explanation:

Options

Share

Embed

Get Data

Pin

Answer Area

Requirement

Option

Ensure that coworkers can see the dashboard.

Share

Display data from Microsoft Excel in the dashboard.

Get Data

Add a report tile to the dashboard.

Pin

NEW QUESTION 189

- (Exam Topic 6)
You are building Power BI visualizations for a team.
For each of the following statements, select Yes if the statement is true. Otherwise, select No.
NOTE: Each correct selection is worth one point.

Statements	Yes	No
Power BI can only retrieve data from up to two different sources for each dashboard.	<input type="radio"/>	<input type="radio"/>
Power BI visualizations can be used in canvas apps and model driven apps.	<input type="radio"/>	<input type="radio"/>
Power BI can display charts and list boxes on dashboards.	<input type="radio"/>	<input type="radio"/>

- A. Mastered
- B. Not Mastered

Answer: A

Explanation:
Reference:
<https://docs.microsoft.com/en-us/power-bi/visuals/power-bi-visualization-types-for-reports-and-q-and-a>
<https://docs.microsoft.com/en-us/power-bi/visuals/power-bi-visualization-slicers>

NEW QUESTION 190

- (Exam Topic 6)
A company plans to use Power Platform to build apps that address specific business challenges. You need to recommend the appropriate types of Power Apps to use. What should you recommend? To answer, select the appropriate options in the answer area.
NOTE: Each correct selection is worth one point

Answer Area

Scenario

Tool

Field technicians need a mobile app to capture the location and the image of defective products.
Sales representatives need to see different views and dashboards in the sales app.

Canvas app
Power Apps Portals
Common Data Service

Canvas app
Model-driven app
Power Apps Portals

- A. Mastered
- B. Not Mastered

Answer: A

Explanation:

Answer Area

Scenario

Tool

Field technicians need a mobile app to capture the location and the image of defective products.
Sales representatives need to see different views and dashboards in the sales app.

Canvas app
Power Apps Portals
Common Data Service

Canvas app
Model-driven app
Power Apps Portals

NEW QUESTION 191

- (Exam Topic 6)
You need to explain the major components of the Common Data Model (CDM) and their functions. Match each term to its definition.
Instructions: To answer, drag the appropriate term from the column on the left to its definition on the right. Each term may be used once, more than once, or not at

Passing Certification Exams Made Easy

visit - <https://www.surepassexam.com>

all. Each correct match is worth one point.
NOTE: Each correct selection is worth one point.

Tools

Entities

Common Data Service

Workflows

Data connectors

Common Data Model

Answer Area

Purpose

Helps jumpstart application development by leveraging business logic, security, and integrations

A set of records used to store data

Tool

- A. Mastered
- B. Not Mastered

Answer: A

Explanation:

Tools

Entities

Common Data Service

Workflows

Data connectors

Common Data Model

Answer Area

Purpose

Helps jumpstart application development by leveraging business logic, security, and integrations

A set of records used to store data

Tool

Common Data Service

Entities

NEW QUESTION 196

- (Exam Topic 6)
You are a retail director for a large clothing company. Each week you use the corporate YouTube channel to create a video that highlights new initiatives, and goals for retail operations.
You need to design a Power Apps app that streams the videos to internal users.
Which objects should you use? To answer, select the appropriate options in the answer area.
NOTE: Each correct selection is worth one point.

Action

Implement the Power Apps app.

Option

Canvas

Model-driven

Portal

Action

Use drag and drop to add a video to the app.

Option

View

Connector

Control

Action

Apply consistent company colors to the app.

Option

Unified Interface

Control

Theme

Template

- A. Mastered
- B. Not Mastered

Answer: A

Explanation:

Reference:
<https://powerapps.microsoft.com/en-us/blog/microsoft-stream-videos-and-channels-in-canvas-apps/> <https://docs.microsoft.com/en-us/powerapps/maker/model-driven-apps/create-themes-organization-branding> <https://docs.microsoft.com/en-us/powerapps/maker/canvas-apps/controls/control-stream-video>

NEW QUESTION 197

- (Exam Topic 6)
You are creating a Power Automate approval flow.
Instructions: For each of the following statements, select Yes if the statement is true. Otherwise, select No.
NOTE: Each correct selection is worth one point.

Statements	Yes	No
The addition of an expense report to a Microsoft OneDrive folder can initiate an approval flow.	<input type="radio"/>	<input type="radio"/>
Approvals must follow a sequential order of approval.	<input type="radio"/>	<input type="radio"/>

- A. Mastered
B. Not Mastered

Answer: A

Explanation:

Box 1: Yes

Box 2: No

Parallel approvals, integrated approvals, and unanimous approvals are also allowed. Reference:

<https://docs.microsoft.com/en-us/power-automate/modern-approvals> <https://docs.microsoft.com/en-us/power-automate/create-approval-response-options>

NEW QUESTION 201

- (Exam Topic 6)

A company is evaluating ways that they can implement AI Builder.

For which two scenarios can you use AI Builder? Each correct selection presents a complete solution. NOTE: Each correct selection is worth one point.

- A. Send emails to all ai users who subscribe to a service.
B. Synchronize data from an external database.
C. Collect data from several data sources and display a dashboard that shows trending data.
D. Interpret images and perform an action on the image.
E. Detect patterns in data and predict outcomes

Answer: BD

NEW QUESTION 202

- (Exam Topic 6)

A company uses Power Apps canvas apps.

When a user opens Power Apps Studio in a browser and selects Apps I can edit, they do not see an app that they need to modify.

You need to determine why the user cannot see the app.

What are three possible reasons? Each correct answer presents a complete solution. NOTE: Each correct selection is worth one point.

- A. The user selected an incorrect Power Apps environment.
B. The user has not been granted the System Customizer role.
C. The user has not been set as the app co-owner.
D. The app has not been shared with the user.
E. The environment does not have a Common Data Service database.

Answer: ACD

Explanation:

Reference:

<https://docs.microsoft.com/en-us/powerapps/maker/canvas-apps/edit-app>

NEW QUESTION 205

- (Exam Topic 6)

You are building Power BI visualizations for a team.

For each of the following statements, select Yes if the statement is true. Otherwise, select No. NOTE: Each correct selection is worth one point.

Answer Area		
Statement	Yes	No
Power BI can only retrieve data from up to two different sources for each dashboard.	<input type="radio"/>	<input type="radio"/>
Power BI visualizations can be used in canvas apps and model driven apps.	<input type="radio"/>	<input type="radio"/>
Power BI can display charts and list boxes on dashboards.	<input type="radio"/>	<input type="radio"/>

- A. Mastered
B. Not Mastered

Answer: A

Explanation:

Yes

Yes Yes

NEW QUESTION 206

- (Exam Topic 6) You create a model-driven app. The app is ready to be shared. You need to complete the process required to set the app up to be shared. How should you complete the process for setting up the app to be shared? To answer, drag the appropriate setting to the correct drop targets. Each source may be used once, more than once, or not at all. You may need to drag the split bar between panes or scroll to view content. NOTE: Each correct selection is worth one point.

Processes

Select an app from the Power Apps

Select the app and select a security

Select a user and choose a security

Select Share.

Answer Area

Step	Process
1	Process
2	Process
3	Process
4	Process

- A. Mastered
- B. Not Mastered

Answer: A

Explanation:
 Reference:
<https://docs.microsoft.com/en-us/powerapps/maker/model-driven-apps/share-model-driven-app>

NEW QUESTION 210

- (Exam Topic 6) Match each tool to its task. To answer, drag the appropriate tool from the column on the left to its task on the right. Each tool may be used once, more than once, or not at all. NOTE: Each correct match is worth one point.

Tools

Power BI

Power Automate

Power Apps

Answer Area

Task	Tool
Automate workflows.	Tool
Trigger an action from an event.	Tool
Create a custom mobile data entry screen.	Tool

- A. Mastered
- B. Not Mastered

Answer: A

Explanation:
 Reference:
<https://docs.microsoft.com/en-us/power-automate/getting-started> <https://docs.microsoft.com/en-us/powerapps/maker/portals/compose-page#add-form>

NEW QUESTION 215

- (Exam Topic 6) A company is building an interactive chatbot to answer questions about products and product warranties You need to create conversation paths re questions about product warranties. Which tool should you use?

- A. Azure Bot Framework
- B. Power Platform admin center
- C. Conversation node
- D. Authoring canvas
- E. Power Virtual Agents portal

Answer: E

NEW QUESTION 216

- (Exam Topic 6) A company is building apps to support their business operations. The apps will use connectors to access data from several data sources and respond to a number of events generated by components. Which two operations can you use for connectors? Each correct answer presents part of the solution. NOTE: Each correct selection is worth one point.

- A. Triggers
- B. Plug-ins
- C. Actions
- D. Gateways

Answer: CD

NEW QUESTION 221

- (Exam Topic 6)
Match each tool to its task. To answer, drag the appropriate tool from the column on the left to its task on the right. Each tool may be used once, more than once, or not at all.
NOTE: Each correct match is worth one point.

Tools

Power BI

Power Automate

Power Apps

Answer Area

Task

Automate workflows.

Trigger an action from an event.

Create a custom mobile data entry screen.

Tool

- A. Mastered
B. Not Mastered

Answer: A

Explanation:

Tools

Power BI

Power Automate

Power Apps

Answer Area

Task

Automate workflows.

Trigger an action from an event.

Create a custom mobile data entry screen.

Tool

Power Automate

Power BI

Power Apps

NEW QUESTION 226

- (Exam Topic 6)
You have a Power BI report with a page named RevReceived. The page shows gross revenue received by your company. You want to create an almost identical page that shows net revenue instead of gross revenue.
What should you do? To answer, select the appropriate option in the answer area.

Answer Area

You should

copy the visuals from RevReceived to a new page.

duplicate the RecReceived page and update the duplicate copy.

import the RevReceived page.

modify the RevReceived page.

- A. Mastered
B. Not Mastered

Answer: A

Explanation:

Answer Area

You should

copy the visuals from RevReceived to a new page.

duplicate the RecReceived page and update the duplicate copy.

import the RevReceived page.

modify the RevReceived page.

NEW QUESTION 227

- (Exam Topic 6)
User1 creates several Power BI dashboards for a company. User1 shares a dashboard with User2 who works for another company. User2 reports that she is able to view the dashboard User2 forwards the email containing the dashboard sharing link that she received to User3.
User3 reports that he receives an error message when he selects the link to view the dashboard. User3 can view a dashboard that he has created.
You need to determine why User 3 receives an error. What is the issue?

- A. Forwarding the email does not share the dashboard with User3.
B. User3 is running an out-of-date version of Power BI and must upgrade to a newer version.
C. User1 is signed in using the wrong organizational account for Power BID- User2 is signed in to the dashboard and must sign out before User3 can sign in

Answer: A

NEW QUESTION 229

.....

Thank You for Trying Our Product

We offer two products:

1st - We have Practice Tests Software with Actual Exam Questions

2nd - Questions and Answers in PDF Format

PL-900 Practice Exam Features:

- * PL-900 Questions and Answers Updated Frequently
- * PL-900 Practice Questions Verified by Expert Senior Certified Staff
- * PL-900 Most Realistic Questions that Guarantee you a Pass on Your First Try
- * PL-900 Practice Test Questions in Multiple Choice Formats and Updates for 1 Year

100% Actual & Verified — Instant Download, Please Click
[Order The PL-900 Practice Test Here](#)