

HP

Exam Questions HPE6-A72

Aruba Certified Switching Associate Exam



NEW QUESTION 1
Refer to the exhibit.

```
Access-1# debug l2mac event
Access-1# debug destination buffer
Access-1# page
```

```
show debug buffer
-----
2020-05-06:22:32:52. 601427|12mac-mgrd|LOG_DEBUG|AMM|-|L2MAC|L2MAC_EVENT|macmgr_m
ac_manager_handle_mac_event(1311), MAC=00:50:79:66:68:01, VLAN=1, Port=1/1/1 is
trying to be inserted
2020-05-06:22:32:52. 602027|12mac-mgrd|LOG_DEBUG|AMM|-|L2MAC|L2MAC_EVENT|macmgr_m
ac_manager_handle_mac_event(1328), MAC=00:50:79:66:68:01 was successfully inserted
```

What command will display the debug l2mac events?

- A. show module L2MAC
- B. show debug terminal
- C. show debug buffer module L2MAC
- D. show debug all

Answer: C

NEW QUESTION 2
Refer to the exhibit.

```
Access-1(config-if)# show run int 1/1/1
interface 1/1/1
    no shutdown
    no routing
    vlan trunk native 1
    vlan trunk allowed all
    exit
Access-1(config-if)# vlan 100
Access-1(config-vlan-100)# exit
Access-1(config)#
```

What commands will successfully enable the SVI for vlan 100 on interface 1/1/1 to produce the results displayed in the command show ip interface brief in the exhibit below?

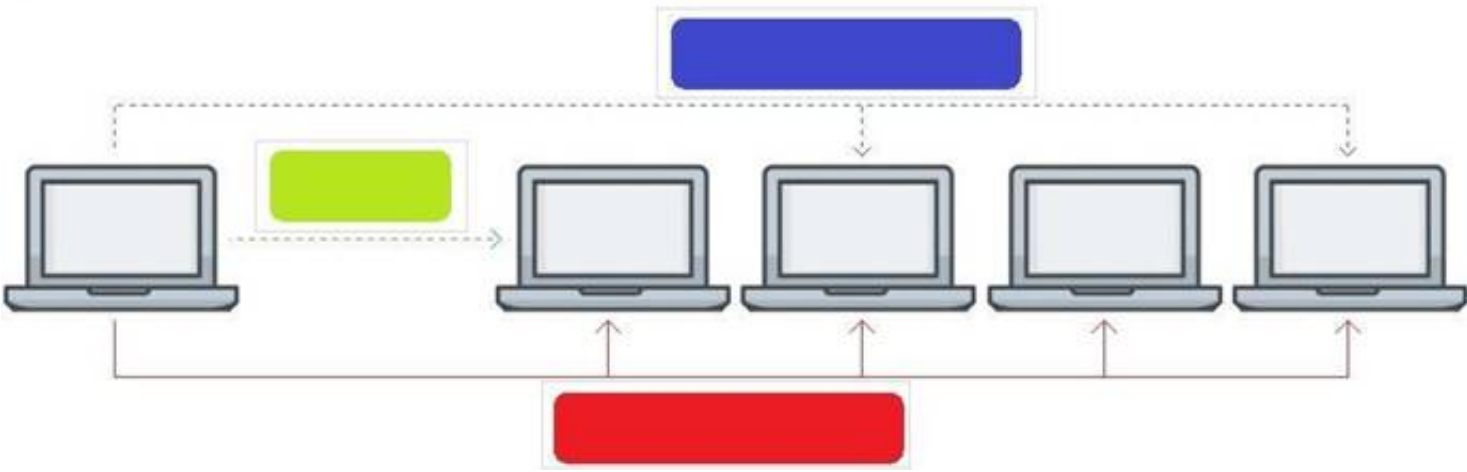
```
Access-1(config)# show ip interface brief
Interface                IP Address                Interface Status
1/1/2                    No Address                down/down
1/1/3                    No Address                down/down
1/1/4                    No Address                down/down
1/1/5                    No Address                down/down
vlan100                  10.1.1.1/24              up/up
```

- A. Access-1(config)# interface 1/1/1 Access-1(config-if)# routingAccess-1(config-if)# interface vlan 100Access-1(config-if-vlan)# ip address 10.1.1.1/24
- B. Access-1(config)# interface 1/1/1Access-1(config-if)# vlan trunk permit vlan 100 Access-1(config-if)# interface vlan 100Access-1(config-if-vlan)# ip address static 10.1.1.1/24
- C. Access-1(config)# interface vlan 100Access-1(config-if-vlan)# ip address 10.1.1.1/24
- D. Access-1(config-if)# vlan 100Access-1(config-vlan)# ip address 10.1.1.1/24

Answer: C

NEW QUESTION 3
Click on the colored box that corresponds with the line that best represents Multicast traffic flow.

Answer Area



- A. Mastered
- B. Not Mastered

Answer: A

Explanation:
Diagram Description automatically generated
Blue Box

NEW QUESTION 4

What is an available command on an Aruba AOS-CX switch that would back up the secondary image to a secure remote repository?

- A. backup secondary sftp://admin@10.1.1.21/GL.10.04.0003.swi
- B. copy secondary sftp://admin@10.1.1.21/GL.10.04.0003.swi
- C. copy sftp://admin@10.1.1.21/GL.10.04.0003.swi secondary
- D. copy secondary tftp://admin@10.1.1.21/GL.10.04.0003.swi

Answer: B

NEW QUESTION 5

Match each network protocol to the correct default listening port and transport protocol. Not all answers will be used.

Default Port and Transport protocol		Network protocol
TCP 20, TCP 21	<input type="text"/>	<input type="text" value="DNS"/>
TCP 23	<input type="text"/>	<input type="text" value="FTP"/>
TCP 53	<input type="text"/>	<input type="text" value="HTTPS"/>
TCP 443	<input type="text"/>	<input type="text" value="Telnet"/>
UDP 20, UDP 21	<input type="text"/>	<input type="text" value="DHCP"/>
UDP 23	<input type="text"/>	
UDP 53	<input type="text"/>	
UDP 67	<input type="text"/>	

- A. Mastered
- B. Not Mastered

Answer: A

Explanation:

Default Port and Transport protocol		Network protocol
TCP 20, TCP 21	FTP	DNS
TCP 23	Telnet	FTP
TCP 53		HTTPS
TCP 443	HTTPS	Telnet
UDP 20, UDP 21		DHCP
UDP 23		
UDP 53	DNS	
UDP 67	DHCP	

NEW QUESTION 6

What is the process where a compute device converts logical data bits into the correct physical representation depending on the media?

- A. Demodulation
- B. Modulation
- C. Propagation
- D. Encapsulation

Answer: D

NEW QUESTION 7

Which two statements are true regarding Checkpoints on Aruba switches? (Choose two.)

- A. Rolling back to a prior checkpoint triggers a reboot of the switch.
- B. Stacking switches using VSF or VSX will disable the Checkpoint feature.
- C. A checkpoint is a snapshot of the running-configuration and relevant metadata at the time the checkpoint was created.
- D. System-generated checkpoints are created after a configuration change and 5 minutes of inactivity.
- E. Checkpoints are available on AOS 5400R switches, as well as on all AOS-CX switches.

Answer: CE

NEW QUESTION 8

Place the OSI Layers in the correct order. Arrange them from least to greatest, starting with Layer 1 on the top, and progressing to Layer 7 on the bottom.

OSI Layer

Application Layer

Data Link Layer

Network Layer

Physical Layer

Presentation Layer

Session Layer

Transport Layer

Order

>

<

↑

↓

- A. Mastered
- B. Not Mastered

Answer: A

Explanation:

Graphical user interface, application Description automatically generated

NEW QUESTION 9

Match the available stacking feature to the correct AOS-CX switch model. Stacking features may be used more than once.

Stacking Feature

VSF

VSX

Answer Area

Stacking Feature	AOS-CX Switch Model
	6300M
	6300F
	8320
	8400
	6400

- A. Mastered
- B. Not Mastered

Answer: A

Explanation:

Stacking Feature

VSF

VSX

Answer Area

Stacking Feature	AOS-CX Switch Model
VSF	6300M
VSF	6300F
VSX	8320
VSX	8400
VSX	6400

NEW QUESTION 10

Which two statements accurately describe the features of NetEdit? (Choose two.)

- A. NetEdit can be used to configure and validate any third-party device that supports SSH and REST access.
- B. NetEdit includes trial licensing for up to 10 nodes.
- C. NetEdit can perform configuration and compliance validation.
- D. NetEdit supports viewing and editing multiple devices using a single deployment plan.
- E. NetEdit can run on a mobile device using Android or Apple IOS.

Answer: CD

NEW QUESTION 10

What are two methods for remotely managing an Aruba AOS-CX switch? (Choose two.)

- A. SNMPv2c
- B. HTTPS
- C. USB-C console
- D. Telnet
- E. SSH

Answer: BE

NEW QUESTION 15

Which two types of routes can be found in the IP routing table of an Aruba AOS-CX switch? (Choose two.)

- A. Local
- B. EIGRP
- C. BGP
- D. ISIS
- E. RIPng

Answer: AC

NEW QUESTION 19

Match each description to the correct term.

Term		Description
ASIC		receives and sends frames by using
Control Plane		Application-Specific Integrated Circuits (ASICs)
Data Plane		switches packets faster than using software
Management Plane		determines packet forwarding using routing, switching, security, and flow optimization
		handles switch monitoring

- A. Mastered
- B. Not Mastered

Answer: A

Explanation:

Term		Description
ASIC	Data Plane	receives and sends frames by using
Control Plane		Application-Specific Integrated Circuits (ASICs)
Data Plane	ASIC	switches packets faster than using software
Management Plane	Control Plane	determines packet forwarding using routing, switching, security, and flow optimization
	Management Plane	handles switch monitoring

NEW QUESTION 24

Refer to the exhibit.

```
Ethernet adapter Ethernet 3:

Connection-specific DNS Suffix . : 
Description . . . . . : Killer E2200 Gigabit Ethernet Controller #2 #2 #2
Physical Address. . . . . : D8-CB-8A-17-8D-ED
DHCP Enabled. . . . . : No
Autoconfiguration Enabled . . . . : Yes
Link-local IPv6 Address . . . . . : fe80::d1ea:377f:5154:9f53%3(Preferred)
IPv4 Address. . . . . : 192.168.1.10(Preferred)
Subnet Mask . . . . . : 255.255.255.0
Default Gateway . . . . . : 192.168.1.1
```

What is the correct binary conversion of the last two hexadecimal characters of the physical address?

- A. 1101 1000
- B. 1110 1101
- C. 1001 1111 0101 0011
- D. 1000 1101 1110 1101

Answer: B

NEW QUESTION 27

Refer to the exhibit.

```
SW1# show vlan
```

VLAN	Name	Status	Reason	Type	Interfaces
1	DEFAULT_VLAN_1	up	ok	default	<output omitted>
10	Engineering	up	ok	static	1/1/1-1/1/7
20	Guest	up	ok	static	1/1/11-1/1/14

The above command was applied to an Aruba AOS-CX 6300M 24-port switch with 4-port SFP56 uplinks. All ports are set as access switchports. Which ports carry VLAN 1 traffic?

- A. 1/1/8, 1/1/10, 1/1/5-1/1/24
- B. 1/1/1-1/1/28
- C. 1/1/1-1/1/24
- D. 1/1/8-1/1/10, 1/1/5-1/1/28

Answer: D

NEW QUESTION 31

Refer to the exhibit.

Port	Type	Product Number	Serial Number	Part Number
1/1/1	SFP+DAC1	J9281D	CN95KBZ00X	8121-1300
1/1/2	SFP+DAC1	J9281D	CN95KBZ086	8121-1300
1/1/5	SFP-BT	J8177D	CN96KK232S	1990-4640
1/1/7	SFP-BT	J8177D	CN96KK20R2	1990-4640
1/1/8	SFP-BT	J8177D	CN96KK232F	1990-4640
1/1/25	SFP28DAC3	JL488A	CN97KBG0BJ	8121-1743
1/1/26	SFP28DAC3	JL488A	CN97KBG057	8121-1743
1/1/45	SFP28DAC3	JL488A	CN97KBG0CW	8121-1743
1/1/46	SFP28DAC3	JL488A	CN97KBG0CX	8121-1743
1/1/47	SFP28DAC3	JL488A	CN97KBG0D6	8121-1743
1/1/48	SFP28DAC3	JL488A	CN97KBG038	8121-1743
Core - 1#				

What command (output shown above) gives the optics serial number and part number information?

- A. show interface physical
- B. show interface transceiver
- C. show inventory
- D. show interface optics

Answer: B

NEW QUESTION 36

Which field in the IPv4 header indicates whether the IP packet carries TCP or UDP traffic?

- A. Protocol
- B. IHL
- C. TTL
- D. Identification

Answer: A

NEW QUESTION 38

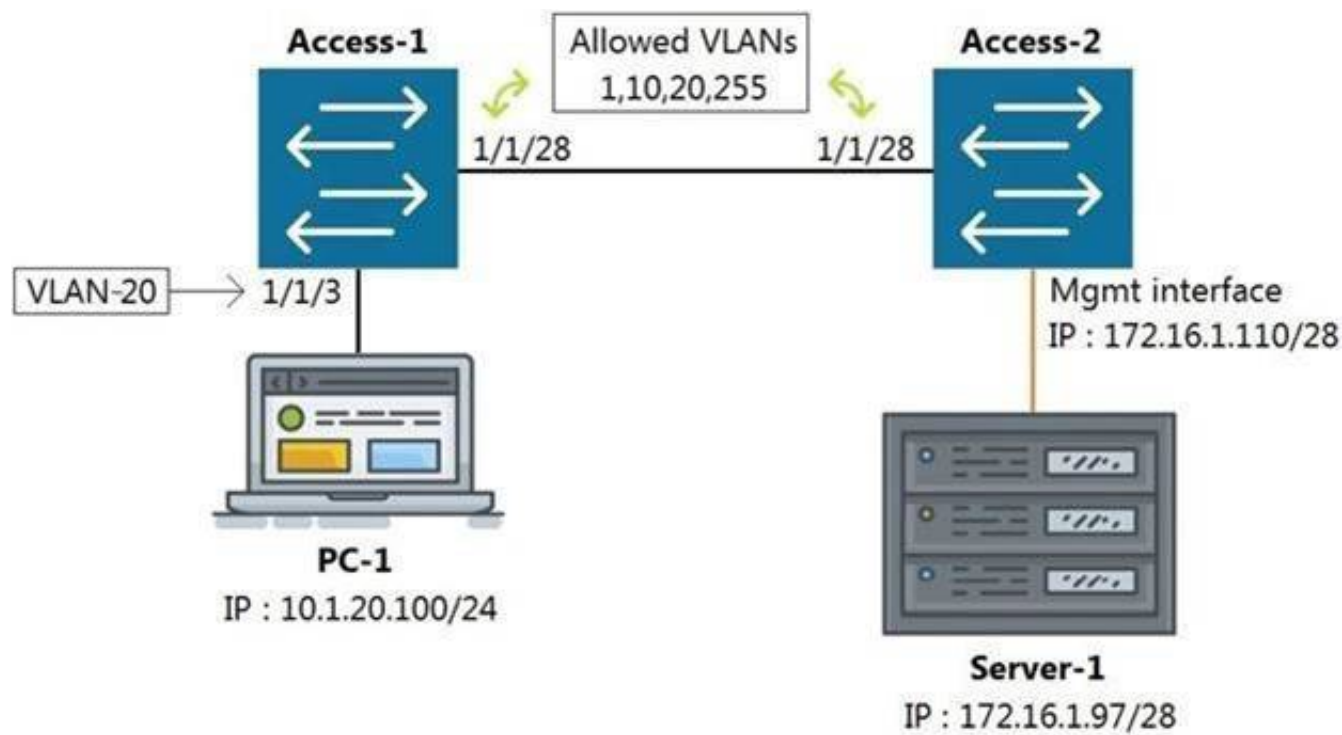
Which switches support Aruba Virtual Switching Extension (VSX)? (Choose two.)

- A. Aruba 6405
- B. Aruba 2930F
- C. Aruba 8400
- D. Aruba 5406R
- E. Aruba 8350

Answer: AC

NEW QUESTION 39

Refer to the exhibit.



All switches are running Aruba OS-CX. While working in the terminal of Access-2, you are unable to reach Server-1 using SSH. What is the correct command to ping Server-1 from Access-2 to test reachability?

- A. Access-2# ping6 172.16.1.97 vrf mgm
- B. Access-2# ping 172.16.1.97
- C. Access-2# ping 172.16.1.97 vrf default
- D. Access-2# ping 172.16.1.97 vrf mgmt

Answer: D

NEW QUESTION 40

What are two primary concerns regarding layer two loops in a redundant topology? (Choose two.)

- A. routing loops
- B. costs associated with upgrading from copper to fiber
- C. multiple frame copies leading to instability of the MAC address table
- D. security issues with a redundant loop indicating to hackers that a back-door exists
- E. broadcast storms

Answer: CD

NEW QUESTION 45

Which switch supports a maximum of 8 line-cards, 3 fabric modules, and 2 management cards?

- A. Aruba 8400
- B. Aruba 8408
- C. Aruba 6410
- D. Aruba 5412r

Answer: A

NEW QUESTION 46

Refer to the exhibit.

```
Core-1# show interface mgmt
Address Mode           : static
Admin State            : up
Mac Address            : 90:20:c2:bc:8e:01
IPv4 address/subnet-mask : 10.1.1.1/24
Default gateway IPv4    : 10.1.1.254
IPv6 address/prefix     :
IPv6 link local address/prefix:
Default gateway IPv6    :
Primary Nameserver      : 10.254.1.21
Secondary Nameserver    :
Core-1# ping 10.1.1.254
connect: Network is unreachable
Core-1#
```

What change on Core-1 will result in a successful ping to 10.1.1.254 from the management interface?

- A. Use the command ping 10.1.1.254 vrf mgmt
- B. Use the command ping 10.1.1.254/24
- C. Change the Core-1 management address to 10.1.1.1/25 first
- D. The destination 10.1.1.254 requires configuring a static route

Answer: A

NEW QUESTION 51

With what other technology does Half Duplex communication closely match?

- A. a pair of fiber optic strands allowing transmit on one and receive on the other at the same time
- B. a mobile phone call
- C. point-to-point connections between two switches allowing concurrent transmit and receive
- D. CB radio using push-to-talk

Answer: D

NEW QUESTION 56

What are two features of the three-tier designs? (Choose two.)

- A. removes the distribution layer in favor of a spine-leaf design used in modern data center deployments
- B. adds a distribution layer to free up resources from the Core for improved performance and routing throughput
- C. a more scalable design over by leveraging a distribution layer to handle Layer 3 routing and access control in large deployments
- D. uses only Layer 2 access on the Access and the Core with Layer 3 routing and access control provided at the distribution layer
- E. is considered legacy by requiring a large flat layer-two broadcast domain from Core to Access and should be avoided

Answer: BC

NEW QUESTION 59

Which command will suppress LLDP messages from egressing on a given port while still allowing LLDP to be enabled on the switch?

- A. switch(config-if)# no lldp interface (port) transmit
- B. switch(config-if)# no lldp transmit
- C. switch(config-if)# no lldp receive
- D. switch(config)# no lldp

Answer: B

NEW QUESTION 64

Your customer has 349 users in a two-story building. What are two benefits of a 2-Tier design? (Choose two.)

- A. Layer 2 and Layer 3 protocols run close to the endpoints to better implement ACL and QoS policy at the edge.
- B. Improved performance by offloading processing from the Access layer to the Core.
- C. Use of layer 2 switches at the access layer can process and route traffic from attached APs.
- D. Support for WAN/MPLS, Internet, and Data Center directly on the Collapsed core.
- E. Provides a more cost effective solution given that no additional switches are required for a third tier.

Answer: AE

NEW QUESTION 66

Match each description to the correct management tool for Aruba AOS-CX.

Management Tools	Answer Area	
	Management Tool	Description
NetEdit		can run as an OVA
Aruba CX Mobile App		requires AOS-CX switches to support HTTPS, SSH, and REST access
		connects to switches via Bluetooth or Wi-Fi
		includes a feature for stacking automation
		supports SNMPv2c to discover third-party devices

- A. Mastered
- B. Not Mastered

Answer: A

Explanation:

Management Tools	Answer Area	
	Management Tool	Description
NetEdit	NetEdit	can run as an OVA
Aruba CX Mobile App	NetEdit	requires AOS-CX switches to support HTTPS, SSH, and REST access
	Aruba CX Mobile App	connects to switches via Bluetooth or Wi-Fi
	Aruba CX Mobile App	includes a feature for stacking automation
	NetEdit	supports SNMPv2c to discover third-party devices

NEW QUESTION 67

Refer to the exhibit.



You are in the process of configuring VSF between Access-1 and Access-2. Access-1 has been configured as the VSF Master. What is a valid configuration for Access-2 to join the VSF stack?

- A. Access-2# configureAccess-2(config)# vsf member 1 Access-2(config)# vsf renumber-to 2 Access-2(vsf-member-1)# link 2 2/1/28 Access-2(vsf-member-1)# exitThis will save the VSF configuration and reboot the switc
- B. Do you want to continue (y/n)? y
- C. Access-2# configureAccess-2(config)# vsf member 2 Access-2(vsf-member-1)# link 2 1/1/28 Access-2(vsf-member-1)# exit This will save the VSF configuration and reboot the switc
- D. Do you want to continue (y/n)? y
- E. Access-2# configureAccess-2(config)# vsf member 2 Access-2(vsf-member-1)# link 1 1/1/28 Access-2(vsf-member-1)# exit This will save the VSF configuration and reboot the switc
- F. Do you want to continue (y/n)? y
- G. Access-2# configureAccess-2(config)# vsf member 1 Access-2(vsf-member-1)# link 1 1/1/28 Access-2(vsf-member-1)# exit Access-2(config)# vsf renumber-to 2This will save the VSF configuration and reboot the switc
- H. Do you want to continue (y/n)? y

Answer: C

NEW QUESTION 69

What command displays information regarding the secondary image installed on an AOS-CX switch?

- A. show secondary
- B. show version detail
- C. show version
- D. show images

Answer: D

NEW QUESTION 73

What are two features in a 2-Tier design that are implemented at the Access layer? (Choose two.)

- A. VPN access
- B. WAN/MPLS connectivity
- C. Endpoint Access
- D. Deep packet inspection
- E. Power over Ethernet

Answer: CE

NEW QUESTION 75

The following command is issued: Switch# checkpoint rollback start What is the result?

- A. The command will fail because rollback commands must be issued from global-config mode.
- B. The switch will revert the running-configuration to the checkpoint called 'start1 without a reboot.
- C. The command will fail because it is incomplete.
- D. The switch will use the checkpoint 'rollback1 as the starting configuration on next reboot.

Answer: B

NEW QUESTION 79

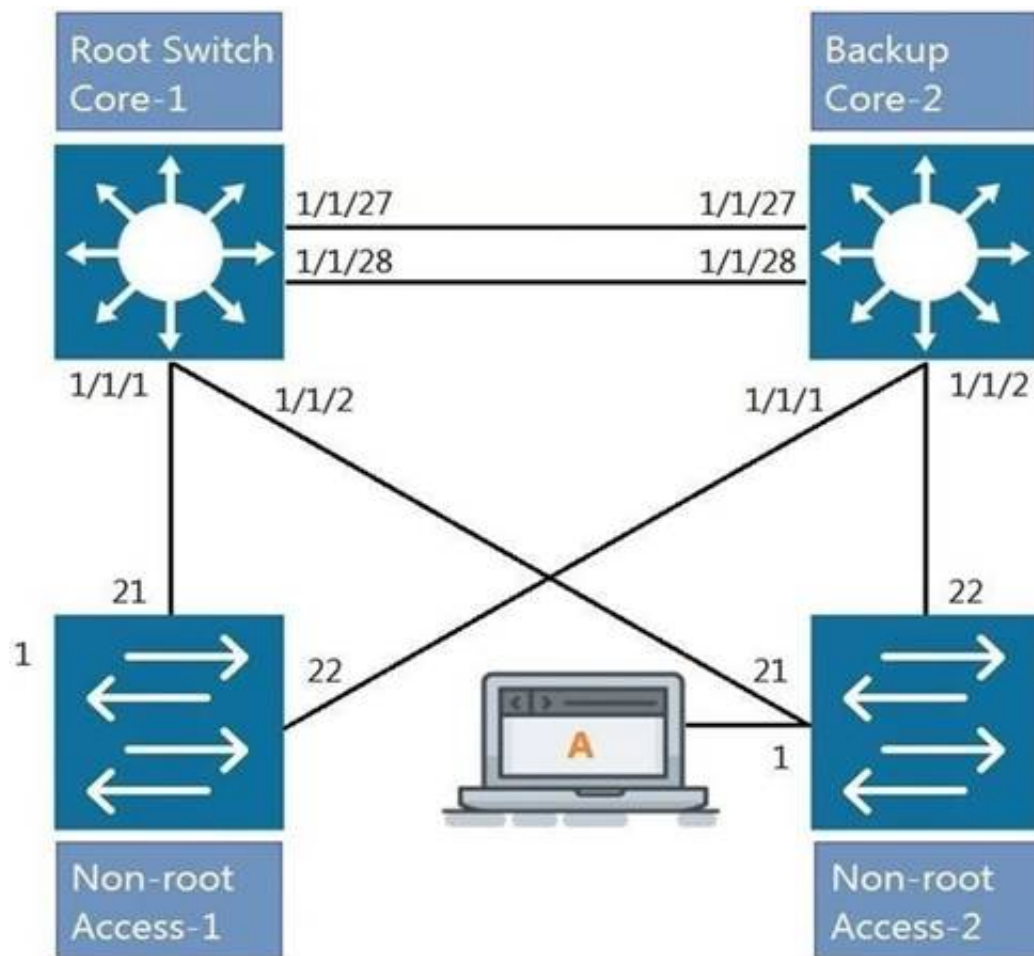
What are two mechanisms supported on AOS-CX 6300 switches used in Multi-active Detection to determine the status of the Primary member? (Choose two.)

- A. Management interface split detection
- B. Peer switch-based detection
- C. Loopback keepalives
- D. ARP-based
- E. BFD

Answer: AD

NEW QUESTION 81

Refer to the exhibit.



All four switches in the diagram have been configured with the region name "Aruba1".
 What two other MSTP configurations must match for switches within the same MST region? (Choose two.)

- A. MST region type
- B. MST Bridge ID
- C. MST version number
- D. MST revision number
- E. MST VLAN to instance mapping

Answer: DE

NEW QUESTION 82

Which two commands will save the running-config so that changes will be loaded automatically on the next reboot? (Choose two.)

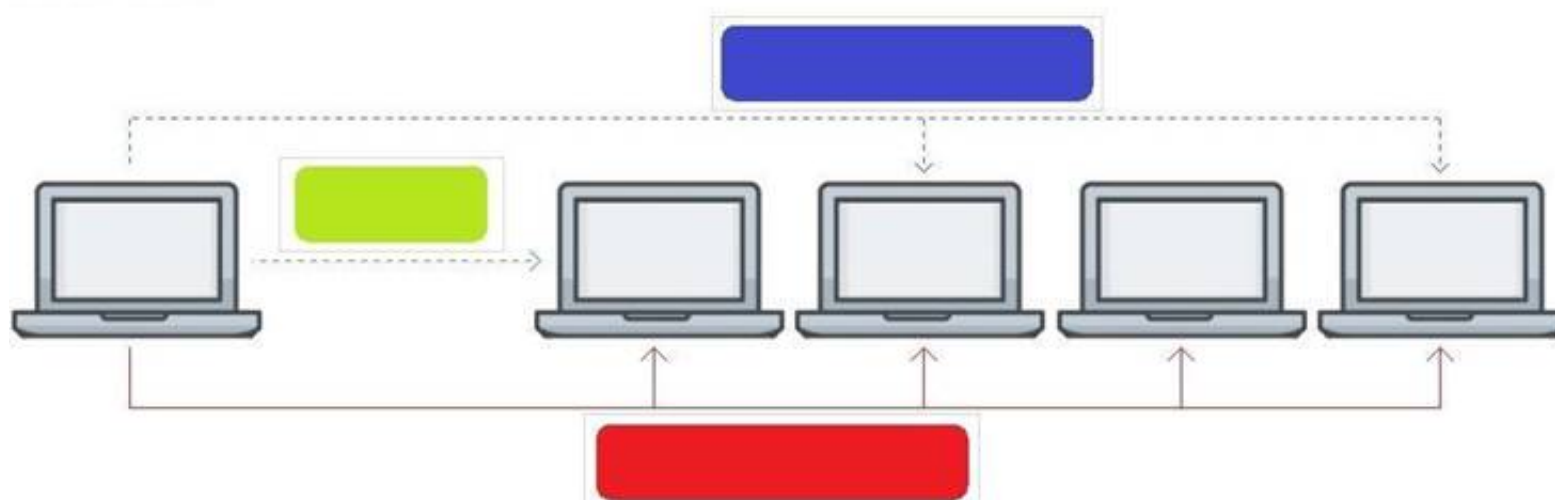
- A. write memory
- B. save
- C. copy config config1 config startup-config
- D. copy running-config startup-config
- E. copy running-config checkpoint boot-config

Answer: AD

NEW QUESTION 84

Click on the colored box that corresponds with the line that best represents Unicast traffic flow.

Answer Area

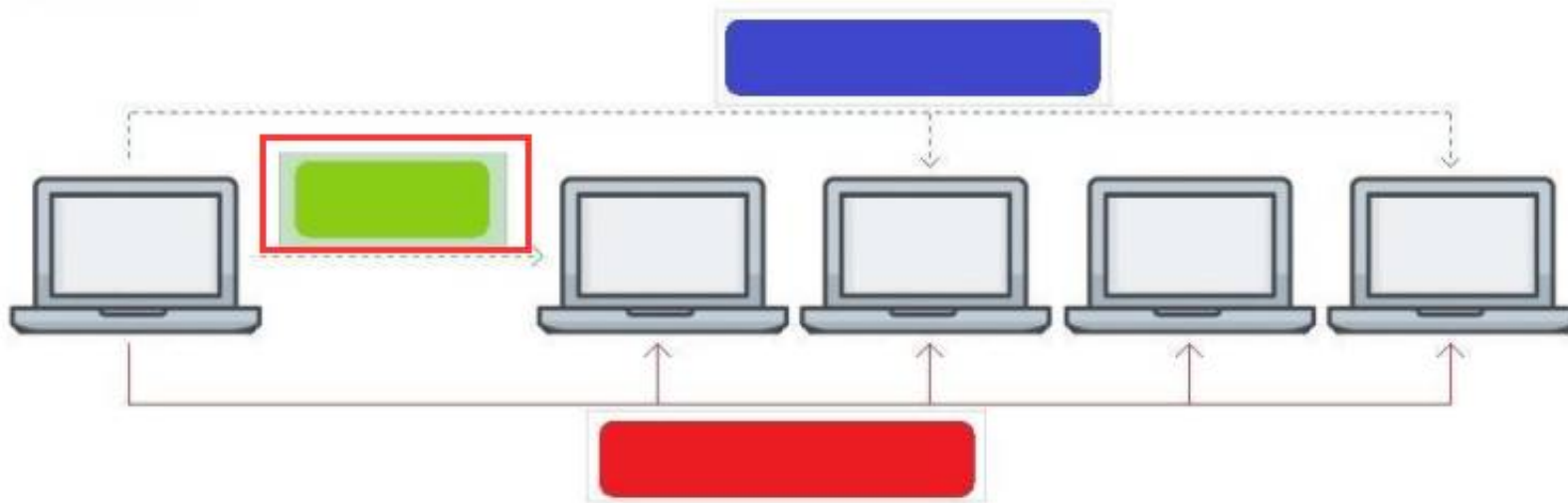


- A. Mastered
- B. Not Mastered

Answer: A

Explanation:

Answer Area



NEW QUESTION 87

Which security benefit does SNMPv3 offer that SNMPv2 does not offer?

- A. SSL encryption
- B. Scopes
- C. Data confidentiality
- D. RADIUS groups

Answer: C

NEW QUESTION 90

What connectivity commands are available on AOS-CX switches? (Choose two.)

- A. netstatus
- B. traceroute
- C. ping
- D. pathping
- E. tracet

Answer: BC

NEW QUESTION 95

ServiceOS login: admin SVOS> password

Enter password: ***** Confirm password: *****

The login password to access an Aruba AOS-CX was lost. After connecting to the switch console port, a reboot is performed and the Service OS console is accessed as shown above.

What is the default password that is required for the admin account while under the Service OS console?

- A. No password is set for this account.
- B. "password"
- C. "forgetme!"
- D. The same login password that has lost originally.

Answer: C

NEW QUESTION 96

Which two options are the Layer 2 protocols? (Choose two.)

- A. 802.1Q
- B. IPSec
- C. STP
- D. RIP
- E. 802.11af

Answer: AC

NEW QUESTION 99

Refer to the exhibit.


```
T11-Access-2# show lldp configuration
```

```
LLDP Global Configuration
```

```
=====
```

```
LLDP Enabled           : Yes
LLDP Transmit Interval : 30
LLDP Hold Time Multiplier : 4
LLDP Transmit Delay Interval : 2
LLDP Reinit Time Interval : 2
```

```
TLVs Advertised
```

```
=====
```

```
Management Address
Port Description
Port VLAN-ID
System Capabilities
System Description
System Name
OUI
```

```
LLDP Port Configuration
```

```
=====
```

PORT	TX-ENABLED	RX-ENABLED
1/1/1	Yes	Yes
1/1/2	Yes	Yes
1/1/27	Yes	Yes
1/1/28	Yes	Yes

<--- output omitted --->

What configuration is needed in order for "show LLDP configuration" to show this output?

- A. none; LLDP is enabled by default on Aruba switches
- B. configuring LLDP both globally and on the interfaces
- C. enabling LLDP on the interfaces only
- D. configuring LLDP globally only

Answer: A

NEW QUESTION 100

Which two statements accurately describe stacking with Aruba switches? (Choose two.)

- A. A VSF stack is allowed between an AOS-CX 6300M and 6300F switches.
- B. VSF is a core or aggregation layer stacking technology due to the high resiliency of sharing a single control plane.
- C. The VSF feature is not compatible between AOS-CX and AOS platforms.
- D. A VSF stack is allowed between an AOS 5400R and an AOS-CX 6400.
- E. VSF and VSX are stacking option with the AOS-CX 8320. 8325. 8400. and 6400 models.

Answer: BE

NEW QUESTION 102

Match each network protocol to the correct server listening port. Not all answers will be used.

Server Listening Port		Protocol	
20,21	<input type="text"/>		DHCP
22	<input type="text"/>		SSH
23	<input type="text"/>		FTP
67	<input type="text"/>		Telnet
68	<input type="text"/>		HTTP
80	<input type="text"/>		
443	<input type="text"/>		

- A. Mastered
- B. Not Mastered

Answer: A

Explanation:
Diagram Description automatically generated

NEW QUESTION 106
.....

Thank You for Trying Our Product

We offer two products:

1st - We have Practice Tests Software with Actual Exam Questions

2nd - Questions and Answers in PDF Format

HPE6-A72 Practice Exam Features:

- * HPE6-A72 Questions and Answers Updated Frequently
- * HPE6-A72 Practice Questions Verified by Expert Senior Certified Staff
- * HPE6-A72 Most Realistic Questions that Guarantee you a Pass on Your FirstTry
- * HPE6-A72 Practice Test Questions in Multiple Choice Formats and Updatesfor 1 Year

100% Actual & Verified — Instant Download, Please Click
[Order The HPE6-A72 Practice Test Here](#)