

Microsoft

Exam Questions PL-600

Microsoft Power Platform Solution Architect



NEW QUESTION 1

- (Topic 1)

You need to investigate the canvas app functionality issues.

Which two tools can you use? Each correct answer presents a complete solution.

NOTE: Each correct selection is worth one point.

- A. App checker
- B. Errors function
- C. Solution checker
- D. Power Platform admin center

Answer: AC

Explanation:

Scenario: The testing team reports that one of the canvas apps is not working as expected. An error message displays as specific pages load.

A: The App checker is now available to help provide a clear list of formula issues in your app, and to provide items to fix to make your app accessible. The App checker is an area that the PowerApps team will continue to invest in, and build on in order help to make debugging, performance and best practice decisions an easier and more guided experience.

C: With the solution checker feature, you can perform a rich static analysis check on your solutions against a set of best practice rules and quickly identify these problematic patterns. After the check completes, you receive a detailed report that lists the issues identified, the components and code affected, and links to documentation that describes how to resolve each issue.

Reference:

<https://powerapps.microsoft.com/en-us/blog/new-app-checker-helps-you-fix-errors-and-make-accessible-apps/>

NEW QUESTION 2

HOTSPOT - (Topic 1)

You need to recommend methods to resolve the organization's issues.

What should you recommend? To answer, select the appropriate options in the answer area.

NOTE: Each correct selection is worth one point.

Issue	Resolution method
Users cannot see Power BI reports.	<div><div></div><div>Add users to Microsoft 365. Assign Power BI licenses to users. Configure an on-premises data gateway.</div></div>
Historical data does not appear in reports.	<div><div></div><div>Configure Azure Data Lake. Configure a custom connector. Configure an on-premises data gateway.</div></div>

Answer:

Issue	Resolution method
Users cannot see Power BI reports.	<div><div></div><div>Add users to Microsoft 365. Assign Power BI licenses to users. Configure an on-premises data gateway.</div></div>
Historical data does not appear in reports.	<div><div></div><div>Configure Azure Data Lake. Configure a custom connector. Configure an on-premises data gateway.</div></div>

- A. Mastered
- B. Not Mastered

Answer: A

Explanation:

Box 1: Add users to Microsoft 365.
Scenario: Users cannot view Power BI reports within the Power Platform apps.
Issue: The people you share with may see a locked tile in a dashboard, or a "Permission required" message when they try to view a report.
Solution: You need to grant them permission to the underlying dataset.
? Go to the All or the Datasets + dataflows tab in your content list.
? Select More options (...) next to a dataset, then select Manage permissions.
? Select Add user.
? Enter the full email addresses for individuals, distribution groups, or security groups.
? Select Grant access.

Box 2: Configure an on-premises data gateway.
Scenario: The company plans to reference historical data in the [on-premises] existing system. The records held in these systems will not be migrated to the new solution except for medication information.
The on-premises data gateway acts as a bridge to provide quick and secure data transfer between on-premises data (data that isn't in the cloud) and several Microsoft cloud services. These cloud services include Power BI, PowerApps, Power Automate, Azure Analysis Services, and Azure Logic Apps. By using a gateway, organizations can keep databases and other data sources on their on-premises networks, yet securely use that on- premises data in cloud services.

NEW QUESTION 3

DRAG DROP - (Topic 1)
You need to recommend methods for assigning security to each group of users.
What should you recommend? To answer, drag the appropriate methods to the correct groups of users. Each method may be used once, more than once, or not at all. You may need to drag the split bar between panes or scroll to view content.
NOTE: Each correct selection is worth one point.

Methods	Answer Area	
	Group of users	Method
Dataverse Application User	Full-time employees	Method
Power Platform Local Business Owner Team	Automation	Method
Azure Active Directory B2B Guest Access	Corporate governance auditing team	Method
Azure Active Directory Security Group Team		

- A. Mastered
- B. Not Mastered

Answer: A

Explanation:

Box 1: Power Platform Local Business Owner Team
Owner team: An owner team owns records and has security roles assigned to the team. A user's privileges can come from their individual security roles, those of the teams that they're part of or the ones they inherit. A team has full access rights on the records that the team owns. Team members are added manually to the owner team.
Scenario: Employee authentication with the existing system is provided by an on-premises Active Directory instance that is linked to Azure Active Directory.
Box 2: Azure Active Directory Security Group Team
An Azure Active Directory (Azure AD) group team. Similar to owner team, an Azure AD group team can own records and can have security roles assigned to the team.
Note: The administration of app and data access for Microsoft Dataverse has been extended to allow administrators to use their organization's Azure Active Directory (Azure AD) groups to manage access rights for licensed Dataverse users.
Box 3: Azure Active Directory B2B Guest Access
An Azure AD B2B collaboration user is an external user, typically from a partner organization, that you invite to sign into your Azure AD organization using their own credentials. This B2B collaboration user (also generally referred to as a guest user) can then access the apps and resources you want to share with them. A user object is created for the B2B collaboration user in the same directory as your employees. B2B collaboration user objects have limited privileges in your directory by default, and they can be managed like employees, added to groups, and so on.

Scenario: Before First Up signs a contract to place workers at a client company, a member of the audit team visits the company and interviews company management. Audit members use different types of devices including Android and iOS devices. First Up has no plans to require the use of a single type of device.

NEW QUESTION 4

DRAG DROP - (Topic 2)
You need to propose a solution for form requirements.
What should you recommend? To answer, drag the appropriate solutions to the correct requirements. Each solution may be used once, more than once, or not at all. You may need to drag the split bar between panes or scroll to view content.
NOTE: Each correct selection is worth one point.

Solutions	Requirement	Solution
Field controls	Phone number format	
Workflow	Sections of Agents case form	
Custom development		

- A. Mastered
- B. Not Mastered

Answer: A

Explanation:

Box 1: Field controls

You must standardize the format used by agents to enter customer phone numbers.

Box 2: Workflow

Log issues as cases. The case form must show variable sections based on the case type.

NEW QUESTION 5

HOTSPOT - (Topic 2)

You need to recommend tools for agents and management.

Which tools should you recommend? To answer, select the appropriate option in the answer area.

NOTE: Each correct selection is worth one point.

User type	Tool
Agent	<div><div></div><div><div>Power BI</div><div>Dashboard</div><div>Microsoft Power Automate</div><div>Microsoft Power Apps</div></div></div>
Management	<div><div></div><div><div>Power BI</div><div>Microsoft Power Apps</div><div>Microsoft AppSource</div><div>Microsoft Power Automate</div></div></div>

Answer:

User type	Tool
Agent	<div><div></div><div>Power BI</div><div>Dashboard</div><div>Microsoft Power Automate</div><div>Microsoft Power Apps</div></div>
Management	<div><div></div><div>Power BI</div><div>Microsoft Power Apps</div><div>Microsoft AppSource</div><div>Microsoft Power Automate</div></div>

- A. Mastered
- B. Not Mastered

Answer: A

Explanation:

Box 1: Dashboard
Agents need dashboards to show a current count of all reservations on the entity.
Box 2: Power BI
Management requires paginated reports for stakeholders.

NEW QUESTION 6

- (Topic 2)
You need to recommend an authentication solution for the planned implementation of Dynamics 365.
What should you include in the recommendation?

- A. Use synchronized identities.
- B. Use the Office 365 tenant for Dynamics 365 Customer Service.
- C. Create a new tenant for Dynamics 365 Customer Service.
- D. Use federated identities

Answer: A

Explanation:

Scenario: Ensure that employees can sign in to all Microsoft apps by using one set of credentials per employee.
Synchronized identity. Synchronize on-premises directory objects with Microsoft 365 and manage your users on-premises. You can also synchronize passwords so that the users have the same password on-premises and in the cloud, but they will have to sign in again to use Microsoft 365.
Reference:
<https://docs.microsoft.com/en-us/power-platform/admin/manage-user-account-synchronization>

NEW QUESTION 7

- (Topic 2)

You need to create an Agent security role.

Which three actions should you recommend? Each correct answer presents part of the solution.

NOTE: Each correct selection is worth one point.

- A. Add security to the seat entity and assign users to the Agents role.
- B. Add security to the Core Records and assign users to the Customer Service Representative role.
- C. Copy the Microsoft Dataverse Basic User role.
- D. Rename the Customer Service Representative role to Agents.
- E. Copy the Customer Service Representative role.
- F. Name the new role Agents.

Answer: BEF

Explanation:

Scenario: The security rule for agents must contain the privileges in the default Customer Service Representative security role.

Create a security role by Copy Role:

Step 1 (E): Copy the Customer Service Representative role. Step 2 (F): Select the New Role Name.

Step 3: (B): When Copying Role is complete, navigate to each tab, ie Core Records, Business Management, Customization, etc.

Set the privileges on each tab. Reference:

<https://docs.microsoft.com/en-us/power-platform/admin/create-edit-security-role>

NEW QUESTION 8

DRAG DROP - (Topic 2)

You need to recommend a solution for integrating luggage information.

What should you recommend? To answer, drag the appropriate types to the correct tables. Each type may be used once, more than once, or not at all. You may need to drag the split bar between panes or scroll to view content.

NOTE: Each correct selection is worth one point.

Types	Table	Type
Custom table	Luggage	
Virtual table		
Activity table	Passenger	
Custom activity table		

- A. Mastered
- B. Not Mastered

Answer: A

Explanation:

Luggage: Custom activity table

An activity can be thought of as any action for which an entry can be made on a calendar. An activity has time dimensions (start time, stop time, due date, and duration) that help determine when the action occurred or will occur. Activities also contain data that helps determine what action the activity represents, for example, subject and description.

Passenger: Customer table

The account and contact tables in Microsoft Dataverse are essential for identifying and managing customers, selling products and services, and providing superior service to the customers. A customer address table is used to store address and shipping information for a customer.

Scenario: The company has a custom app for managing and tracking passenger luggage. The app uses Microsoft Dataverse. Agents need to view which pieces of luggage match to each passenger, and then need to add the total on the passenger record.

NEW QUESTION 9

- (Topic 2)

You need to provide the IT specialists with design diagrams. What should you provide?

- A. Business process modeler (BPM) B AI Builder
- B. Entity relationship diagram (ERD)
- C. Dynamics 365 Product Visualize

Answer: A

Explanation:

Scenario: IT specialists want to design Power BI reports. They need to understand the underlying table relationships of the system.

Business process modeler (BPM) in Microsoft Dynamics Lifecycle Services (LCS) is a tool that you can use to create, view, and modify repeatable implementations that are based on business process libraries. BPM helps you align your business processes with industry- standard processes that are described by the American Productivity & Quality Center

(APQC)

Reference:
<https://docs.microsoft.com/en-us/dynamics365/fin-ops-core/dev-itpro/lifecycle- services/bpm-overview>

NEW QUESTION 10

- (Topic 3)
You need to recommend a method for transferring machine information to Dynamics 365 Field Service.
What should you recommend?

- A. Microsoft Dataverse connector
- B. Dual-write
- C. Lifecycle Services

Answer: A

Explanation:
Scenario: Information about each machine produced must be transferred to Dynamics 365 Field Service.
Use the Microsoft Dataverse connector when connecting to the Microsoft Dataverse used for Microsoft Dynamics 365 Sales, Microsoft Dynamics 365 Customer Service, Microsoft Dynamics 365 Field Service, Microsoft Dynamics 365 Marketing, and Microsoft Dynamics 365 Project Service Automation.
Reference:
<https://docs.microsoft.com/en-us/powerapps/maker/canvas-apps/connections/connection-dynamics-crmonline>

NEW QUESTION 10

HOTSPOT - (Topic 3)
You need to design the quality inspection order data model.
What should you recommend? To answer, select the appropriate options in the answer area.
NOTE: Each correct selection is worth one point.

Requirement	Action
Obtain the serial number and other machine attributes for use in the inspection order.	<div><div></div><div>Use a virtual table.</div><div>Import to a custom table.</div><div>Create a lookup to Dynamics 365 Field Service.</div></div>
Configure the relationship between inspection orders and inspection ratings.	<div><div></div><div>Create a one-to-many relationship and set the behavior to Parental.</div><div>Create a many-to-many relationship and set the behavior to Parental.</div><div>Create a one-to-many relationship and set the behavior to Cascade None.</div><div>Create a many-to-many relationship and set the behavior to Cascade None.</div></div>

- A. Mastered
- B. Not Mastered

Answer: A

Explanation:
Box 1: Create a lookup to Dynamics 365 Field Service
Scenario: Machines are assigned serial numbers and placed in stock until they are shipped to customers.
Entity lookup: Allows technicians to choose a Dynamics 365 record. In the inspection designer interface, admins must select an entity and a field to display. For a chosen entity, the Name field and mandatory fields are the entity attributes that can be displayed in the lookup.
Box 2: Create a one-to-many relationship and set the behavior to Parental Scenario: Inspection orders must:
? Allow entry of quality ratings of passed or failed for each quality metric identified for the machine being rated.
? Be automatically marked as failed if one inspection step rating is marked as failed.

Each inspection order can have one or many inspection steps, and each inspection step has a rating.
Note: Each pair of tables that are eligible to have a 1:N relationship can have multiple 1:N relationships between them. Yet usually only one of those relationships can be considered a parental table relationship.

NEW QUESTION 15
HOTSPOT - (Topic 3)

You need to recommend a solution to meet user interface requirements.
What should you recommend? To answer, select the appropriate options in the answer area.
NOTE: Each correct selection is worth one point.

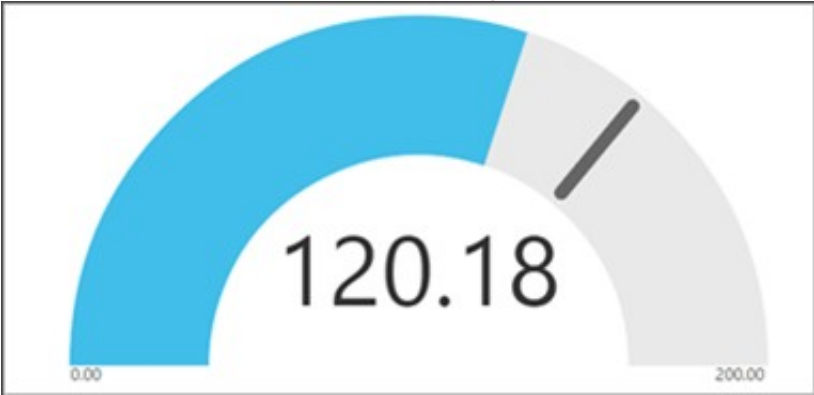
Requirement	Solution
Visual representation of gauge readings with minimum and maximum tolerances.	<div><div></div><div>Create and embed a Power BI radial gauge. Create and embed a custom visualization component. Create and embed a standard Power Apps donut chart.</div></div>
Add visibility to the manufacturing inspection records for onsite technicians.	<div><div></div><div>Configure mobile offline synchronization. Add an inspection order to the work order form Modify the sitemap for Dynamics 365 Field Service.</div></div>

- A. Mastered
- B. Not Mastered

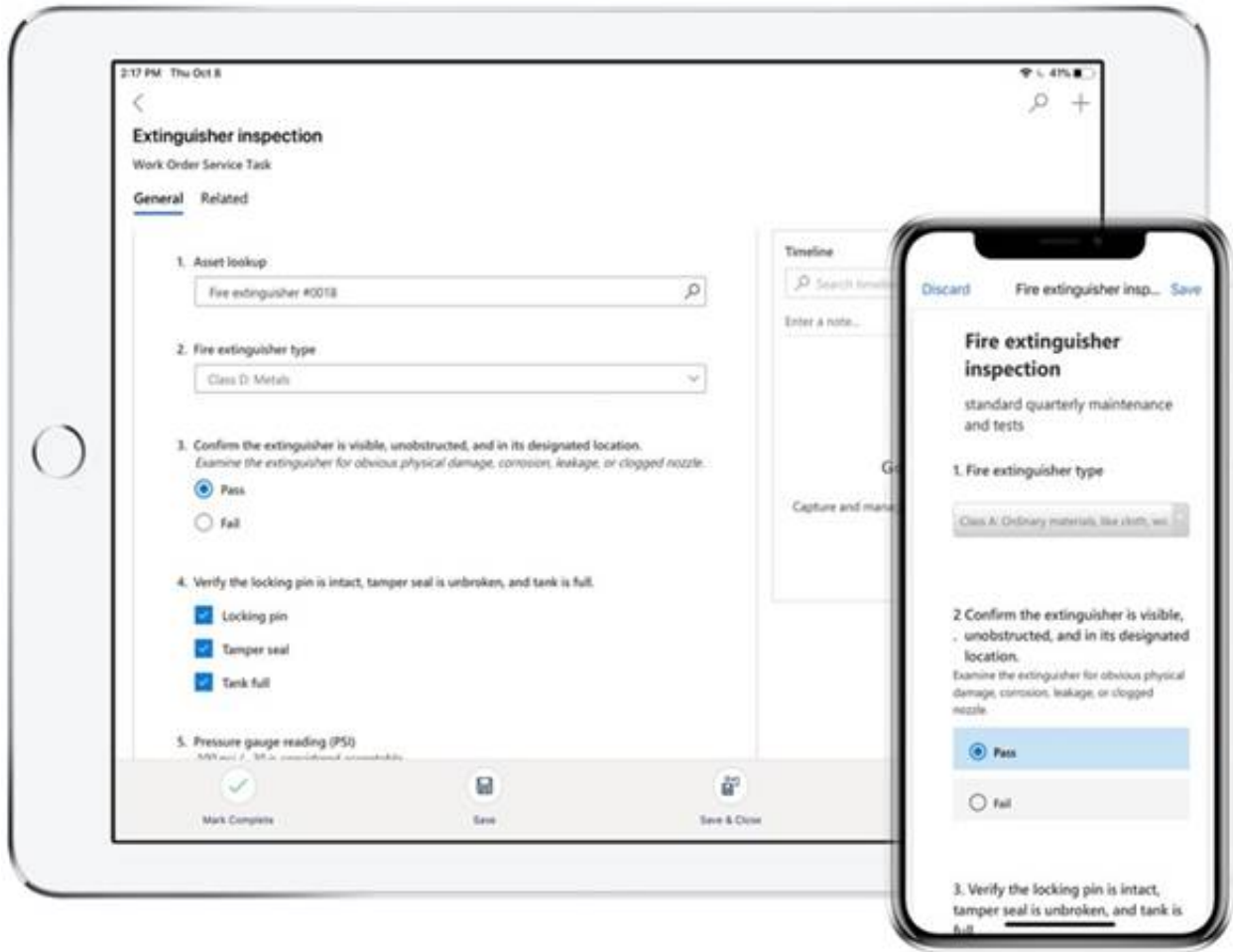
Answer: A

Explanation:

Box 1: Create and embed a Power Bi radial gauge
A radial gauge chart has a circular arc and shows a single value that measures progress toward a goal or a Key Performance Indicator (KPI). The line (or needle) represents the goal or target value. The shading represents the progress toward that goal. The value inside the arc represents the progress value. Power BI spreads all possible values evenly along the arc, from the minimum (left-most value) to the maximum (right-most value).



In this example, you're a car retailer tracking the sales team's average sales per month. The needle represents a 140 cars sales goal. The minimum possible average sales is 0 and the maximum is 200. The blue shading shows that the team is averaging approximately 120 sales this month.
Box 2: Add an inspection order to the work order form
You can add inspections to work orders in Dynamics 365 Field Service.
Field Service inspections are digital forms that technicians use to quickly and easily answer a list of questions as part of a work order. The list of questions can include safety protocols, pass-and-fail tests for a customer asset, an interview with a customer, or other audits and assessments performed before, during, or after a work order.
Example:



NEW QUESTION 18

- (Topic 3)

You need to resolve the issue reported during testing. What should you do?

- A. Create an image data type within the Inspection Order table.
- B. Create a relationship within the Inspection Order table to the originating inspection order.
- C. Create a Quick View form for the inspection order.

Answer: B

Explanation:

Need to store the image in the table.

Scenario: The company uses photos of employees to generate employee badges. Photos are uploaded into Microsoft 365 user profiles.

NEW QUESTION 19

- (Topic 3)

You need to manage user access to the app.

Which two connection types should you recommend? Each correct answer presents part of the solution.

NOTE: Each correct selection is worth one point.

- A. Virtual table with a customer connector
- B. Microsoft Dataverse connector
- C. Office 365 Outlook connector
- D. Office 365 Users connector

Answer: CD

Explanation:

Office 365 Users lets you access user profiles in your organization using your Office 365 account. You can use the Use the connection in your Power Platform app. Dataverse is part of the Microsoft 365 collaboration and productivity tools. Using federation, applications can connect to Dataverse using the same system user identities and credentials available in an Azure Active Directory based network.

Scenario:

? Users must be active employees of Fabrikam.

? Quality inspection app: Fabrikam is evaluating Microsoft Power Platform to determine whether it can meet the company's requirements for a manufacturing defect and quality inspection solution. Each machine produced must be subjected to a quality inspection at various points during production. Each machine must undergo a more extensive quality inspection before the machine can be shipped to the customer.

Reference:

<https://docs.microsoft.com/en-us/powerapps/maker/canvas-apps/connections/connection-office365-users>

NEW QUESTION 24

- (Topic 3)

You need to recommend an environment for the inspection solution. Where should you recommend installing the solution?

- A. within the Dynamics 365 Field Service environment
- B. in a separate Microsoft Dataverse environment in the same instance as the Dynamics 365 Field Service environment
- C. in a separate Dataverse environment with Dynamics 365 apps enabled
- D. within the default Dynamics 365 Field Service environment

Answer: A

NEW QUESTION 25

- (Topic 4)

A large company experiences high staff turnover rates. As a result, the company must add or remove multiple system user accounts daily.

You need to recommend a security concept which will facilitate complex security profiles to entities for large groups of users across the Power Apps and Dynamics 365 applications.

What should you recommend?

- A. Hierarchy security
- B. Field-level security
- C. User access management
- D. Team privileges

Answer: D

Explanation:

User and team management is the area of Microsoft Dataverse where you can create and maintain user accounts and profiles.

A user is any person who works for a business unit who uses Dataverse. Each user has a user account.

A team is a group of users. Teams let users across an organization collaborate and share information.

Note: Why use Dataverse?

Easy to secure – Data is securely stored so that users can see it only if you grant them access. Role-based security allows you to control access to tables for different users within your organization.

Data from your Dynamics 365 applications is also stored within Dataverse, allowing you to quickly build apps

that use your Dynamics 365 data and extend your apps with Power Apps. Reference:

<https://docs.microsoft.com/en-us/powerapps/developer/data-platform/user-team-entities> <https://docs.microsoft.com/en-us/powerapps/maker/data-platform/data-platform-intro>

NEW QUESTION 28

DRAG DROP - (Topic 4)

You are designing a solution to automate the following processes:

- Import data into Microsoft Dataverse from systems that have an API available.
- Import data into Microsoft Dataverse from systems that do not have an API available.
- Validate that contacts in a Microsoft Excel file Dataverse forms in a specified order. You need to implement automation methods.

Which components should you use? To answer, drag the appropriate components to the correct requirements. Each component may be used once, more than once, or not at all. You may need to drag the split bar between panes or scroll to view content.

NOTE: Each correct selection is worth one point.

Components	Answer Area	Requirement	Component
Cloud flow		Interact with applications that do not have an API.	
Business process flow		Guide users through business steps in a specific order.	
Robotic process automation		Interact with applications that have an API.	

- A. Mastered
B. Not Mastered

Answer: A

Explanation:

Components	Answer Area	Requirement	Component
Cloud flow		Interact with applications that do not have an API.	Robotic process automation
Business process flow		Guide users through business steps in a specific order.	Business process flow
Robotic process automation		Interact with applications that have an API.	Cloud flow

NEW QUESTION 32

HOTSPOT - (Topic 4)

A company uses Dynamics 365 Sales and Power BI.

Sales managers must be able to keep track of changes to their pipeline in the following ways:

- ? Notify the sales managers when an Opportunity changes sales stage.
- ? Notify the sales managers when the pipeline drops below 2.5M USD.
- ? When reviewing the pipeline in Power BI, a sales executive must be able to add a Playbook to an Opportunity.

You need to recommend a solution that meets the company requirements.

Which combination of solutions should you recommend? To answer, select the appropriate option in the answer area.

NOTE: Each correct selection is worth one point.

Notify the sales manager when an Opportunity changes sales stage.	<div>Microsoft Power Automate, Microsoft Dataverse connector, and Microsoft Office 365 Outlook connector</div> <div>Microsoft Power Automate, Microsoft Dataverse connector, and Microsoft Office 365 users</div> <div>Microsoft Power Automate, data alerts, and Microsoft Office 365 connector</div>
Notify the sales managers when the pipeline drops below 2.5 USD.	<div>Microsoft Power Automate, Microsoft Dataverse connector, and Microsoft Office 365 Outlook connector</div> <div>Microsoft Power Automate, Power BI data alerts, and Microsoft Office 365 connector</div> <div>Microsoft Power Automate, Power BI, Power Apps, and Microsoft Dataverse connector</div>
When reviewing the pipeline in Power BI, a sales executive must be able to add a Playbook to an Opportunity.	<div>Power BI, Power Apps, Microsoft Dataverse connector, and Microsoft Office 365 Outlook connector</div> <div>Microsoft Power Automate, Data alerts, Microsoft Dataverse connector, and Microsoft Office 365 users</div> <div>Microsoft Power Automate, Data alerts, and Microsoft Office 365 connector</div> <div>Microsoft Power Automate, Power BI, Power Apps, and Microsoft Dataverse connector</div>

- A. Mastered
B. Not Mastered

Answer: A

Explanation:

Box 1: Microsoft Power Automate, Microsoft Dataverse connector, and Microsoft 365 Outlook connector

Use Microsoft Dataverse as the data source.

While Power Automate is a robust tool with ever-expanding capabilities, it also handles simple tasks with grace. A universal business need for many organizations is the ability to automate email notifications based on certain criteria: an opportunity is won, send an email to the sales manager; a case is closed, send an email to the customer; a work order is completed, send an email to the customer.

Power Automate can easily accommodate this using the Microsoft 365 Outlook connector.

Box 2: Microsoft Power Automate, Power Bi data alerts, and Microsoft 365 connector Data alerts in the Power BI service: Set alerts to notify you when data in your dashboards changes beyond limits you set.

Box 3: Microsoft Power Automate, Power BI, Power Apps, and Microsoft Dataverse connector

NEW QUESTION 35

- (Topic 4)

A company wants to create a Power Automate flow that posts marketing events to social media.

The company must ensure that the postings adhere to regulatory requirements for handling of personally identifiable information (PII) data. The company will not post events to unauthorized social media platforms.

You need to ensure that the requirement is met.

Which two actions should you perform? Each correct answer presents part of the solution.

NOTE: Each correct selection is worth one point.

- A. Configure the relevant connector so that is part of the Non-Business data group category.

- B. Create a security role to prevent data export.
- C. Configure an Azure Active Directory (AAD) security role for the maker to the environment.
- D. Create a Data Loss Protection (DLP) policy.
- E. Configure the relevant connector so that it is part of the Blocked data group category.

Answer: DE

Explanation:

DLP policies enforce rules for which connectors can be used together by classifying connectors as either Business or Non-Business. If you put a connector in the Business group, it can only be used with other connectors from that group in any given app or flow. Sometimes you might want to block the usage of certain connectors altogether by classifying them as Blocked.

Reference:

<https://docs.microsoft.com/en-us/power-platform/admin/wp-data-loss-prevention>

NEW QUESTION 40

HOTSPOT - (Topic 4)

A company reports the following issues with an existing data management system.

? Users cannot search for specific records by using a user-friendly ID or record identifier.

? Users occasionally enter data into fields that is not required.

? The record form displays all fields. Many of the fields are not used.

You need to ensure that the Power Platform solution will ensure data quality can be properly maintained.

Which component should you use? To answer, select the appropriate options in the answer area.

NOTE: Each correct selection is worth one point.

Requirement	Solution
Ensure that users can search for specific records by using a unique identifier.	<div><div></div><div>Business rule</div><div>Autonumber column</div><div>Business process flow</div><div>Duplicate detection rule</div></div>
You must prevent data entry into columns that do not require entry.	<div><div></div><div>Business rule</div><div>Real time workflow</div><div>Business process flow</div><div>Duplicate detection rule</div></div>

Answer:

Requirement	Solution
Ensure that users can search for specific records by using a unique identifier.	<div><div></div><div>Business rule</div><div>Autonumber column</div><div>Business process flow</div><div>Duplicate detection rule</div></div>
You must prevent data entry into columns that do not require entry.	<div><div></div><div>Business rule</div><div>Real time workflow</div><div>Business process flow</div><div>Duplicate detection rule</div></div>

- A. Mastered
- B. Not Mastered

Answer: A

Explanation:

Box 1: Autonumber column

Autonumber columns are columns that automatically generate alphanumeric strings whenever they are created.

Box 2: Business rule

By combining conditions and actions, you can do any of the following with business rules:

? Enable or disable columns

? Set column values

? Clear column values

? Set column requirement levels

? Show or hide columns

- ? Validate data and show error messages
- ? Create business recommendations based on business intelligence.

NEW QUESTION 41

- (Topic 4)

An organization plans to implement a solution to deliver the complete sales process for its sales teams. The organization does NOT have any physical barcode scanners.

To meet the organization business requirements, the proposed solution must include the following capabilities:

- ? Create and qualify leads to contacts
- ? Generate quotes and convert quotes to orders
- ? Scan product barcodes as part of the order generation process

You need to recommend a solution to help the organization achieve its business requirements.

What should you recommend?

- A. Dynamics 365 mobile app and a Power Apps canvas app
- B. Dynamics 365 for Phones only
- C. Dynamics 365 Customer Service and Dynamics 365 Sales
- D. Unified Service Desk

Answer: A

Explanation:

There is barcode scanner control in Power Apps. The control opens a native scanner on an Android or iOS device. The scanner automatically detects a barcode, a QR code, or a data- matrix code when in view.

Use the Dynamics 365 for phones or Dynamics 365 for tablets app to run customer engagement apps (such as Dynamics 365 Sales, Dynamics 365 Customer

Service, and Dynamics 365 Marketing), built on Microsoft Dataverse on your mobile device.

Reference:
<https://docs.microsoft.com/en-us/dynamics365/field-service/mobile-power-app-system- barcode-scanning>

<https://docs.microsoft.com/en-us/dynamics365/mobile-app/overview>

NEW QUESTION 46

HOTSPOT - (Topic 4)

You are implementing a Microsoft Power Platform solution for a customer to include data migration from multiple legacy systems. The data includes lead and contact data. The environment includes an assigned security group.

The following issues have occurred during a go-live deployment attempt:

- Lookup values are not populated when data migration is complete.
- Data is being added to the contacts table that is not part of the data migration.
- Various users do not appear in the list of users available for record assignment. You need to resolve the go-live deployment issues.

How should you resolve the issue? To answer, select the appropriate options in the answer area.

NOTE: Each correct selection is worth one point.

Answer Area

Issue	Solution
Lookup values are not populated when data migration is complete.	<div>Split the import data into smaller import batches.</div> <div>Import the data by using an application user.</div> <div>Split the import data into smaller import batches.</div> <div>Disable all Power Automate flows, plug-ins, and workflows.</div> <div>Run data migration in a specific order.</div>
Data is being added to the contacts table that is not part of the data migration.	<div>Disable all Power Automate flows, plug-ins, and workflows.</div> <div>Disable auditing.</div> <div>Import the data by using an application user.</div> <div>Disable all Power Automate flows, plug-ins, and workflows.</div> <div>Split the import data into smaller import batches.</div>
Various users do not appear in the list of users available for record assignment.	<div>Add to a security group.</div> <div>Add to a security group.</div> <div>Add a security role.</div> <div>Add a Microsoft 365 role.</div> <div>Add a field security profile.</div>

- A. Mastered
- B. Not Mastered

Answer: A

Explanation:

NEW QUESTION 48

- (Topic 4)

You are designing a Microsoft Power Platform solution for an automobile parts manufacturer. You create the following tables:

Table	Comments
Assemblies	For each assembly record, there will be one or more rows in the Parts table. When the ownership for an assembly record changes, the related parts records must be updated.
Parts	Rows in the Parts table must not be deleted when an assembly is deleted.

You need to recommend a relationship behavior. Which relationship behavior should you recommend?

- A. Referential, Restrict Delete
- B. Custom
- C. Parental
- D. Referential, Remove Link

Answer: A

Explanation:

Restrict Delete: Prevent the Referenced table record from being deleted when referencing tables exist.

Reference:

<https://docs.microsoft.com/en-us/powerapps/developer/data-platform/configure-entity-relationship-cascading-behavior>

NEW QUESTION 51

- (Topic 4)

You are designing a self-service portal for a company. The portal must meet the following requirements:

? Customers must be able to submit and review cases.

? Customers must be able to chat with service representatives in near real time.

? Allow service representatives to select cases from queues and use knowledge articles to resolve customer concerns.

You need to recommend solutions for the company that do not require custom development.

Which three apps or services should you recommend? Each correct answer presents part of the solution.

NOTE: Each correct selection is worth one point.

- A. Dynamics 365 Field Service
- B. Dynamics 365 Customer Service
- C. Omnichannel for Customer Service
- D. Customer Insights
- E. Customer self-service portal

Answer: BCE

Explanation:

Reference:

<https://docs.microsoft.com/en-us/powerapps/maker/portals/portal-templates>

<https://docs.microsoft.com/en-us/dynamics365/customer-service/embed-chat-widget-portal>

NEW QUESTION 56

HOTSPOT - (Topic 4)

You design a Power Platform solution for a customer. The solution uses Microsoft Dataverse as the data store. You are managing the go-live process for the solution.

The customer reports the following performance issues:

? Form load time is much slower than it was during testing.

? Overall system performance has been significantly slower that it was during testing.

You need to recommend how to troubleshoot system performance.

Which actions should you recommend? To answer, select the appropriate options in the answer area.

NOTE: Each correct selection is worth one point.

Performance issue	Action
Slow form load times	<div><div>▼</div><div>Review workflows associated with the form events. Review QuickFind properties for the fields on the form. Review the fields that are on the form.</div></div>
Overall slow system performance	<div><div>▼</div><div>Change all security roles from global read permissions to business unit permissions. Review one to many relationships to verify whether cascade settings are necessary. Change security roles from global read access to business unit to provide better performance.</div></div>

- A. Mastered
- B. Not Mastered

Answer: A

Explanation:

Box 1: Review the fields that are on the form

Keep the number of table columns (fields) to a minimum.

The more table columns (formerly referred to as fields) you have in a form, the more data that needs to be downloaded to view each record.

Box 2: Review one to many relationships to verify whether cascade settings are necessary.

NEW QUESTION 61

- (Topic 4)

A company provides mobile diagnostic imaging services. You are designing a Power Apps solution to manage patient appointments and procedures.

Patient records are stored within the company s cloud patient billing system. The patient ID must be the only information stored within the app. The patient name and date of birth must be visible to the technician to verify the patient's identity.

You need to recommend a solution to display the patient information. What should you recommend?

- A. Virtual table
- B. Business rule
- C. Privacy preference
- D. Data gateway
- E. Custom dataflow

Answer: A

Explanation:

A virtual table is a custom table in Microsoft Dataverse that has columns containing data from an external data source. Virtual tables appear in your app to users as regular table rows, but contain data that is sourced from an external database, such as an Azure SQL Database. Rows based on virtual tables are available in all clients including custom clients developed using the Dataverse web services.

Reference:

<https://docs.microsoft.com/en-us/powerapps/maker/data-platform/create-edit-virtual-entities>

NEW QUESTION 62

- (Topic 4)

A company uses manual processes to track interactions with customers. The company wants to use Power Platform to improve productivity.

The company has the following requirements:

? Provide customers with an online portal where they can submit and review cases.

? Ensure that customers can chat online with a customer service representative at any time.

? Route chats to customer service representatives based on skill and availability.

You need to recommend a solution to the company.

Which three components should you recommend? Each correct answer presents part of the solution.

NOTE: Each correct selection is worth one point.

A. Dynamics 365 Virtual Agents chatbots

B. Customer self-service portal

C. Dynamics 365 Field Service

D. Business process flows

E. Omnichannel for Customer Service

Answer: BDE

Explanation:

B: Customer self-service portal: A customer self-service portal enables customers to access self-service knowledge, support resources, view the progress of their cases, and provide feedback.

Note: Based on the selected environment in Power Apps, you can create a Dataverse starter portal or a portal in an environment containing customer engagement apps (Dynamics 365 Sales, Dynamics 365 Customer Service, Dynamics 365 Field Service, Dynamics 365 Marketing, and Dynamics 365 Project Service Automation).

E: Omnichannel for Customer Service offers a suite of capabilities that extend the power of Dynamics 365 Customer Service Enterprise to enable organizations to instantly connect and engage with their customers across digital messaging channels.

Reference:

<https://docs.microsoft.com/en-us/powerapps/maker/portals/portal-templates> <https://docs.microsoft.com/en-us/dynamics365/customer-service/embed-chat-widget-portal>

NEW QUESTION 66

- (Topic 4)

Note: This question is part of a series of questions that present the same scenario. Each question in the series contains a unique solution that might meet the stated goals. Some question sets might have more than one correct solution, while others might not have a correct solution.

After you answer a question in this section, you will NOT be able to return to it. As a result, these questions will not appear in the review screen.

A company plans to automate the expense approval process.

Users currently enter data into an on-premises SQL Server database. You need to allow users to submit expenses from mobile devices.

Solution: Create a canvas app for expense data entry. Create a custom connector. Create a cloud flow for approval and use the custom connector to add data to the SQL Server database.

Does the solution meet the goal?

A. Yes

B. No

Answer: B

Explanation:

NEW QUESTION 70

HOTSPOT - (Topic 4)

An organization is optimizing its Microsoft Power Platform solution architecture. The optimization needs to address the following:

? Label names for option sets and multiselect option sets should be added as separate fields for reporting.

? Users complain that when a case is assigned to another user, all the activities are also assigned.

? Some Power BI reports based on Microsoft Dataverse data need near-real-time updating.

You need to recommend a design solution to meet these requirements.

What should you recommend? To answer, select the appropriate option in the answer area.

NOTE: Each correct selection is worth one point.

Requirement	Design
Users report that when a case is assigned to another user, all activities are also assigned.	<div>▼</div> <div>For each activity entity relationship, set Cascading rules to Configurable Cascading and Assign to Cascade None</div> <div>Do not implement, but train users on best practices for assigning cases.</div> <div>Create a 1:N relationship between the user entity/table and the Activities table.</div>
Some Power BI reports based on Microsoft Dataverse data require near-real-time updates.	<div>▼</div> <div>Create Power BI reports using the Microsoft Dataverse connector.</div> <div>Implement the Data Export Service; create Power BI reports that point to Microsoft Azure SQL Database.</div> <div>Create Power BI dataflows based on the Microsoft Dataverse connector; point the Power BI report to the dataflows.</div>

- A. Mastered
- B. Not Mastered

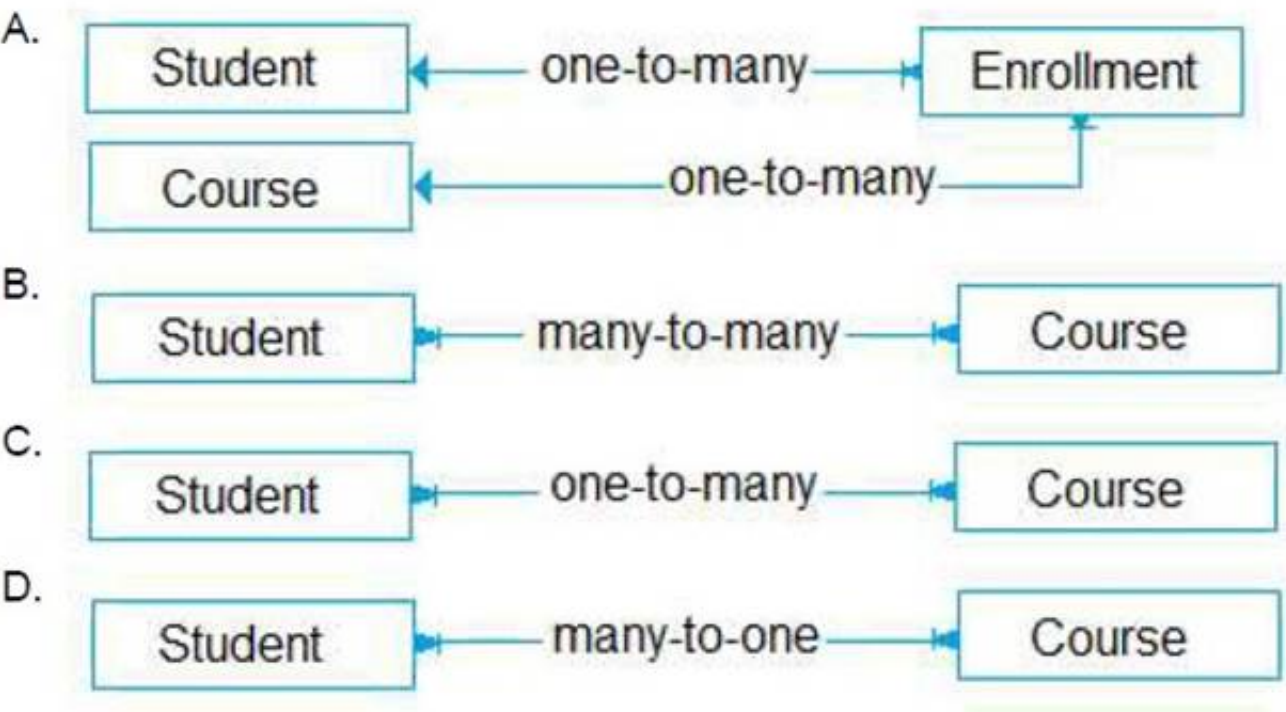
Answer: A

Explanation:

Requirement	Design
Users report that when a case is assigned to another user, all activities are also assigned.	<div>▼</div> <div>For each activity entity relationship, set Cascading rules to Configurable Cascading and Assign to Cascade None</div> <div>Do not implement, but train users on best practices for assigning cases.</div> <div>Create a 1:N relationship between the user entity/table and the Activities table.</div>
Some Power BI reports based on Microsoft Dataverse data require near-real-time updates.	<div>▼</div> <div>Create Power BI reports using the Microsoft Dataverse connector.</div> <div>Implement the Data Export Service; create Power BI reports that point to Microsoft Azure SQL Database.</div> <div>Create Power BI dataflows based on the Microsoft Dataverse connector; point the Power BI report to the dataflows.</div>

NEW QUESTION 72

- (Topic 4)
You are designing the data model for a school. The school wants to track students' enrollments in courses. The system must meet the following requirements: Track the courses in which each student is enrolled. Track the students that are enrolled in each course. Track dates when each student enrolled in each course and the person who approved the enrollment. Allow users to create a report that details which students are enrolled in which courses. You need to recommend a data model that will fit the school's requirements.
Which logical model should you recommend?



- A. Option A
- B. Option B
- C. Option C

D. Option D

Answer: A

Explanation:

Need a relationship table.

N:N (Many-to-Many): A table relationship that depends on a special Relationship table, sometimes called an Intersect table, so that many rows of one table can be related to many rows of another table.

When viewing rows of either table in a N:N relationship you can see a list of any rows of the other table that are related to it. Reference:

<https://docs.microsoft.com/en-us/powerapps/maker/data-platform/create-edit-entity-relationships>

NEW QUESTION 75

DRAG DROP - (Topic 4)

A company has a call center that manages customer-related issues.

The company has the following customer experience improvement requirements:

- Simulate a human conversation with a customer by providing a chat interface.
- Ensure the initial conversation is passed to a live agent upon escalation. You need to recommend a solution for each requirement.

Which solutions should you recommend? To answer, drag the appropriate solutions to the correct requirements. Each solution may be used once, more than once, or not at all. You may need to drag the split bar between panes or scroll to view content.

NOTE: Each correct selection is worth one point.

Solutions

- Power Virtual Agents
- Dynamics 365 Remote Assist
- Dynamics 365 Customer Service
- Omnichannel for Customer Service

Requirement

- Provide an automated chat interface.
- Pass conversation to a live agent upon escalation.

Solution

Answer:

Solutions

- Power Virtual Agents
- Dynamics 365 Remote Assist
- Dynamics 365 Customer Service
- Omnichannel for Customer Service

Requirement

- Provide an automated chat interface.
- Pass conversation to a live agent upon escalation.

Solution

- Power Virtual Agents
- Omnichannel for Customer Service

A. Mastered

B. Not Mastered

Answer: A

NEW QUESTION 78

- (Topic 4)

A company is implementing Dynamics 365 Sales.

The company has turned off out-of-the-box quote calculations in order to implement its own custom calculations.

When users update a line item on a quote, they expect to see an updated total for the quote in real time. Users are reporting inconsistent behavior, with some aggregations taking up to two hours.

You review the system design and notice many asynchronous workflows. You need to recommend a solution to enable the calculation in real time.

Which two options should you recommend? Each answer presents a complete solution. NOTE: Each correct selection is worth one point.

- A. Consolidate asynchronous workflow into a single real-time workflow.
- B. Consolidate multiple asynchronous workflows into a single asynchronous workflow.
- C. Implement a business process flow to replace the existing workflows.
- D. Convert the asynchronous workflows to a synchronous plug-in.

Answer: AB

Explanation:

NEW QUESTION 83

- (Topic 4)

A company has a Power Platform solution that integrates with a third-party system. The client reports that unexpected updates are being made to the Accounts table. You need to determine the root cause of the issue.

In which three locations should you investigate? Each correct answer presents a complete solution.

NOTE: Each correct selection is worth one point.

- A. Audit summary view
- B. Solution history
- C. SDK Message Processing Steps
- D. Plug-in trace log
- E. System job run history

Answer: ABD

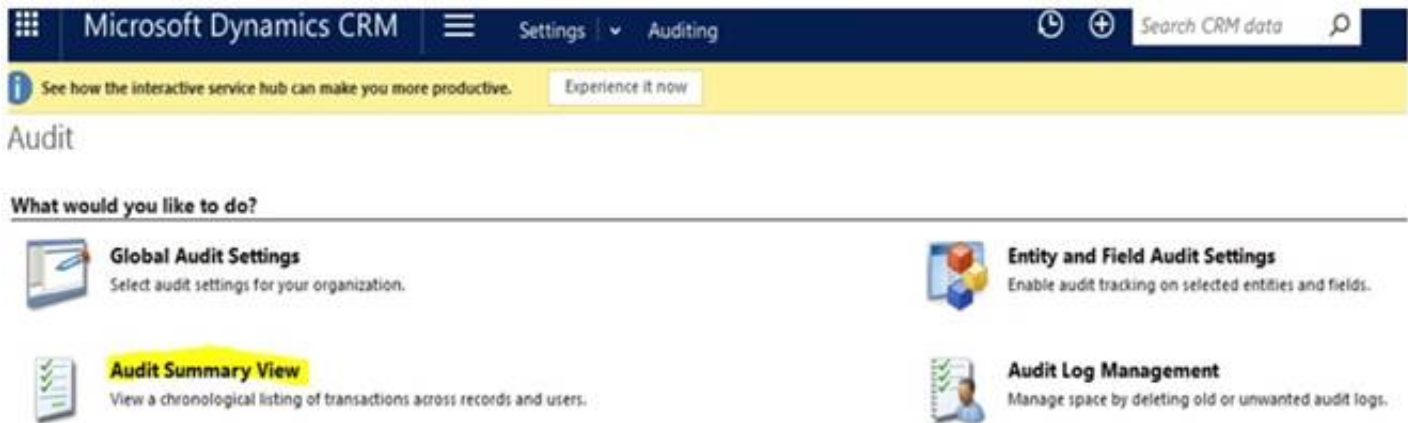
Explanation:

A: How to View Auditing Log Details?

System administrators can see activities for the entities that are enabled for audit logging. To view the audit logs:

? Go to Settings > System > Auditing.

? Choose Audit Summary View.
 ? Under Audit Summary View, you will see the list of audit entries



B: You can view details about solution operations from the Solutions area of Power Apps. An operation can be a solution import, export, or uninstall. The solution history displays information such as solution version, solution publisher, type of operation, operation start and end time, and operation status.

D: Trace log records are written to the PluginTraceLog Table. Writing of these records is controlled by the trace settings mentioned in Enable trace logging.

This data can be found in model-driven applications by navigating to Settings and choosing the Plug-in Trace Log tile.

Reference:

<https://www.sherweb.com/blog/dynamics-365/audits-dynamics-365/> <https://docs.microsoft.com/en-us/powerapps/developer/data-platform/logging-tracing>

NEW QUESTION 86

HOTSPOT - (Topic 4)

You are supporting a recent go-live for a model-driven app that includes mobile offline functionality.

Users report the following issues:

? The process of downloading initial metadata for the app takes hours to complete.

? Some account views are unavailable when the app is offline.

? Changes to users' security privileges are not reflected in the mobile app.

? Contact data is not available when the app is offline.

You need to resolve the mobile app performance issues.

What should you review? To answer, select the appropriate options in the answer area.

NOTE: Each correct selection is worth one point.

Issue	Resolution
The process of downloading initial metadata for the app takes hours to complete.	<div> <div></div> <div> Synchronize the mobile app. Remove organization data filters. Reduce records included in the profile filter. </div> </div>
Changes to users' security privileges are not reflected in the mobile app.	<div> <div></div> <div> Synchronize the mobile app. Reduce records included in the profile filter. Remove reference to tables not included in mobile profile. </div> </div>
Some account views are unavailable when the app is offline.	<div> <div></div> <div> Synchronize the mobile app. Reduce records included in the profile filter. Remove reference to tables not included in mobile profile. </div> </div>
Contact data is not available when the app is offline.	<div> <div></div> <div> Reduce records included in the profile filter. Update mobile profile to include contact information. Remove reference to tables not included in mobile profile. </div> </div>

Answer:

Issue	Resolution
The process of downloading initial metadata for the app takes hours to complete.	<div> <div></div> <div> Synchronize the mobile app. Remove organization data filters. Reduce records included in the profile filter. </div> </div>
Changes to users' security privileges are not reflected in the mobile app.	<div> <div></div> <div> Synchronize the mobile app. Reduce records included in the profile filter. Remove reference to tables not included in mobile profile. </div> </div>
Some account views are unavailable when the app is offline.	<div> <div></div> <div> Synchronize the mobile app. Reduce records included in the profile filter. Remove reference to tables not included in mobile profile. </div> </div>
Contact data is not available when the app is offline.	<div> <div></div> <div> Reduce records included in the profile filter. Update mobile profile to include contact information. Remove reference to tables not included in mobile profile. </div> </div>

- A. Mastered
- B. Not Mastered

Answer: A

NEW QUESTION 91

DRAG DROP - (Topic 4)

You are overseeing the data migration for a Microsoft Power Platform solution. The migration team is performing a test migration with a subset of data. The migration team reports the following findings:

- ? Users who own account rows are receiving system generated emails.
- ? Data that is not part of the migration is being added to the Contact and Appointment tables.
- ? The size of the log listed on the Power Platform admin center Capacity page has increased significantly.

You need to recommend strategies to resolve the reported issues. What should you recommend? To answer, drag the appropriate resolution to the correct migration problem. Each resolution may be used once, more than once, or not at all. You may need to drag the split bar between panes or scroll to view content. NOTE: Each correct selection is worth one point.

Resolution strategies	Migration issue	Resolution strategy
Disable auditing.	Users who own account rows are receiving system generated emails.	
Disable duplicate detection.	Data that is not part of the migration is being added to the Contact and Appointment tables.	
Disable all custom JavaScript functions.	The size of the log listed on the Power Platform admin center Capacity page has increased significantly.	
Disable all workflows, plug-ins, and Power Platform admin center		

Answer:

Resolution strategies	Migration issue	Resolution strategy
Disable auditing.	Users who own account rows are receiving system generated emails.	Disable duplicate detection.
Disable duplicate detection.	Data that is not part of the migration is being added to the Contact and Appointment tables.	Disable all workflows, plug-ins, and Power Platform admin center
Disable all custom JavaScript functions.	The size of the log listed on the Power Platform admin center Capacity page has increased significantly.	Disable auditing.
Disable all workflows, plug-ins, and Power Platform admin center		

- A. Mastered
- B. Not Mastered

Answer: A

Explanation:

Box 1: Disable duplicate detection
Duplicate detection has rules for sending emails.
Box 2: Disable all workflows, plug-ins, and Power Platform admin center
Box 3: Disable auditing
Auditing affects the size of the log file.

NEW QUESTION 96

HOTSPOT - (Topic 4)

You are performing a fit gap requirements analysis. You need to select Microsoft Power Platform components to satisfy the requirements. Which components should you use? To answer, select the appropriate options in the answer area. NOTE: Each correct selection is worth one point.

Answer Area

Requirement	Component
Coordinate long-term end-to-end delivery of financial counseling services to farmers.	<div>Model-driven app</div> <div>Model-driven app</div> <div>Power Virtual Agents</div> <div>Dynamics 365 Customer Voice</div>
Manage project accounting and recognize revenue compliant with international financial reporting standards.	<div>Dynamics 365 Finance</div> <div>Dynamics 365 Project Operations</div> <div>Dynamics 365 Field Service</div> <div>Dynamics 365 Finance</div>
Notify users of their overdue tasks on a daily basis.	<div>Power Automate</div> <div>Power Automate</div> <div>Power Virtual Agents</div> <div>AppSource</div>
Notify users of their overdue tasks on a daily basis.	

- A. Mastered

B. Not Mastered

Answer: A

Explanation:

Answer Area

Requirement

Coordinate long-term end-to-end delivery of financial counseling services to farmers.

Manage project accounting and recognize revenue compliant with international financial reporting standards.

Notify users of their overdue tasks on a daily basis.

Notify users of their overdue tasks on a daily basis.

Component

Model-driven app

Model-driven app

Power Virtual Agents

Dynamics 365 Customer Voice

Dynamics 365 Finance

Dynamics 365 Project Operations

Dynamics 365 Field Service

Dynamics 365 Finance

Power Automate

Power Automate

Power Virtual Agents

AppSource

NEW QUESTION 101

- (Topic 4)

A company is struggling to gather insights from won and lost opportunities.

Users must be able to access the company's solution from mobile and desktop devices. The solution must meet the following requirements:

- Track opportunities and reasons for the win or loss of opportunities in the context of other related data.
- Display data to users as charts and tables and provide drill-through capabilities.

You need to recommend a Microsoft Power Platform tool to help the client visualize the data. Which two technologies should you recommend? Each correct answer presents a complete solution. NOTE: Each correct selection is worth one point.

- A. Power BI
- B. Power Virtual Agents
- C. Power Apps
- D. Power Automate

Answer: AC

NEW QUESTION 103

- (Topic 4)

A company plans to automate business processes by using Power Automate. You identify a subprocess that must be implemented across multiple flows. You need to implement the subprocess so that it is maintainable and easy to navigate. What should you do?

- A. Save a copy of the subprocess and then add any additional actions into the flow.
- B. Initiate the subprocess with an automated trigger.
- C. Copy the actions of the subprocess into the flow by using the clipboard.
- D. Initiate the subprocess with an instant trigger.

Answer: B

NEW QUESTION 105

HOTSPOT - (Topic 4)

An animal welfare organization wants to track the movement of wolf packs in a region. Cameras at specific locations capture images when motion is detected within the camera sensor range. Staff upload the images manually to a shared drive and then analyze the images.

The organization wants to automate image capture and analysis. The organization has the following requirements:

- ? Save captured images in an appropriate location.
- ? Analyze saved images by using an image recognition process.
- ? Display data in real-time dashboards.

You need to recommend the correct technology for the requirements.

What should you recommend? To answer, select the appropriate options in the answer area.

NOTE: Each correct selection is worth one point.

Requirement	Technology option
Save captured images in an appropriate location.	<div>▼</div> <div>Business process flow</div> <div>Desktop flow</div> <div>Instant cloud flow</div> <div>Automated cloud flow</div>
Analyze saved images by using an image recognition process.	<div>▼</div> <div>Instant cloud flow and AI Builder</div> <div>Automated cloud flow and AI Builder</div> <div>Desktop flow and AI Builder</div>
Display data in real-time dashboards.	<div>▼</div> <div>Dynamics 365 interactive experience dashboard</div> <div>Model-driven app dashboard with native graphs</div> <div>Model-driven app dashboard with Power BI</div>

- A. Mastered
 B. Not Mastered

Answer: A

Explanation:

Box 1: Automated cloud flow.

Create a cloud flow when you want your automation to be triggered either automatically, instantly, or via a schedule.

Automated flows: Create an automation that is triggered by an event such as arrival of an email from a specific person, or a mention of your company in social media.

Box 2: Desktop flow and AI Builder

Desktop flows are used to automate tasks on the Web or the desktop. Using Power Automate Desktop you can automate tasks on the desktop as well as the Web.

Box 3: Model-driven app dashboard with Power BI

The Power BI cloud service works with Microsoft Dataverse apps to provide a self-service analytics solution. Power BI automatically refreshes the app's data displayed.

NEW QUESTION 107

- (Topic 4)

A company sells antique books. The company stores data about book locations in an existing system by using the following database fields: Room, Shelf.

The company must import the data from the existing system into a Power Platform solution. Existing data into must be modified to match the design of the new solution.

You need to recommend a solution to combine the room and shelf fields into a single column during the import process.

Which tool should you recommend?

- A. Power Platform dataflows
 B. Data Import Wizard
 C. import from CSV
 D. Microsoft Excel Online

Answer: B

Explanation:

Dataverse includes a web application tool called Import Data Wizard. You use this tool to import data records from one or more comma-separated values (.csv), XML Spreadsheet 2003 (.xml), or text files.

Use transformation mapping to modify data before importing it. For example, split a full name that is contained in the source file into a first name and a last name to match the target columns for a table.

Note:

? To implement data import, you typically do the following:

? Create a comma-separated values (CSV), XML Spreadsheet 2003 (XMLSS), or text source file.

? Create a data map or use an existing data map.

? Create a comma-separated values (CSV), XML Spreadsheet 2003 (XMLSS), or text source file.

? Create a data map or use an existing data map.

? Associate an import file with a data map.

? Upload the content from a source file to the associated import file.

? Parse the import file.

? Transform the parsed data.

? Upload the transformed data into the target Dataverse server.

Reference:

<https://docs.microsoft.com/en-us/powerapps/developer/data-platform/import-data>

<https://docs.microsoft.com/en-us/powerapps/developer/data-platform/add-transformation-mappings-import>

NEW QUESTION 109

HOTSPOT - (Topic 4)

A company has a Power Platform environment that connects to a third-party marketing application. The company reports that the data in the Power Platform lead table does not match data from the marketing application. Issues include:

- The owner data in the lead table and the third-party application do not match.
- The Topic column has more information than the related record from the marketing application.
- There are differences in how telephone numbers are formatted. You need to determine which processes are causing the issues.

Which three processes may be causing the differences observed? Each correct answer presents a complete solution.

NOTE: Each correct selection is worth one point.

Issue

Solution

Migration processes fail due to operation timeouts.

	▼
Increase multithreading and/or batch size settings.	
Decrease multithreading and/or batch size settings.	
Ensure you are loading data into all tables at the same time.	
Ensure you are loading data into tables in a particular order.	

Records that include lookup columns often fail to load.

	▼
Increase multithreading and/or batch size settings.	
Decrease multithreading and/or batch size settings.	
Ensure you are loading data into all tables at the same time.	
Ensure you are loading data into tables in a specific order.	

Answer:

Issue

Solution

Migration processes fail due to operation timeouts.

	▼
Increase multithreading and/or batch size settings.	
Decrease multithreading and/or batch size settings.	
Ensure you are loading data into all tables at the same time.	
Ensure you are loading data into tables in a particular order.	

Records that include lookup columns often fail to load.

	▼
Increase multithreading and/or batch size settings.	
Decrease multithreading and/or batch size settings.	
Ensure you are loading data into all tables at the same time.	
Ensure you are loading data into tables in a specific order.	

- A. Mastered
B. Not Mastered

Answer: A

Explanation:

Box 1: Increase multithreading and/or batch size settings
Box 2: Ensure you are loading data in a specific order.
Load the base tables in the hierarchies first.

NEW QUESTION 111

- (Topic 4)

You are designing a Microsoft Power Platform solution that uses Microsoft Dataverse.

You need to recommend a way to update currency exchange rates within Microsoft Dataverse.

What are two possible ways to achieve this goal? Each correct answer presents a complete solution.

NOTE: Each correct selection is worth one point.

- A. Review AppSource for prebuilt solutions.
B. Create a Power Automate flow that uses a custom connection or HTTP request to an outside source for exchange rates.
C. Embed an iframe that points to a currency exchange service into a model-driven app.
D. Use the Power BI connector to establish a link that updates Microsoft Dataverse with the current exchange rate.

Answer: AB

Explanation:

B: We need a source for exchange rates. There are some published connectors, but you also use a free service called Exchange Rates API, which are based on the European Central Bank, and create a custom connection.

Now that we have our custom connector defined and have a way to request the latest exchange rates, the next step is to create a Power Automate flow that will update all of currencies setup in our Dataverse environment.

Dataverse is a multicurrency system, in which each record can be associated with its own currency. This currency is called the transaction currency. The multicurrency features enable users to perform financial transactions like opportunities, quotes, orders, and invoices in multiple currencies. This feature also provides a currency choice to the end user when a financial transaction occurs.

Reference:

<https://readyxrm.blog/2021/03/10/updating-currency-exchange-rates-in-dataverse/>

NEW QUESTION 114

- (Topic 4)

A company has a list of contacts in a Microsoft Excel file. The company wants to load the contact information into a Microsoft Power Platform solution. You need to recommend a data-loading solution. What should you recommend?

- A. Add the contacts to a static worksheet
- B. Use the Excel Template feature
- C. Use the import from Excel feature.

Answer: B

NEW QUESTION 115

HOTSPOT - (Topic 4)

A company plans to create a Microsoft Power Platform solution that integrates with Dynamics 365 Sales. The solution must meet the following requirements:

- Connect directly with a Microsoft Azure SQL database as an external data source at run time where specific data is available in the Dynamics 365 Sales solution without the need for data replication.
- An external system needs to send data to the company's Dynamics 365 Sales solution. You need to recommend the most suitable solution to integrate Dynamics 365 Sales with both systems.

What should you recommend? To answer, select the appropriate option in the answer area.

Answer Area

Integration requirement	Solutions
Have read-only visibility of data from an external Azure SQL database.	<div>Use virtual tables.</div> <div>Use a custom plug-in.</div> <div>Use Dynamics 365 Web API.</div> <div>Use a web resource to display data.</div>
External system sends data to Dynamics 365 Sales.	<div>Use a custom plug-in.</div> <div>Use Dynamics 365 Web API.</div> <div>Use a web resource to display data.</div>

- A. Mastered
- B. Not Mastered

Answer: A

Explanation:

Answer Area

Integration requirement	Solutions
Have read-only visibility of data from an external Azure SQL database.	<div>Use virtual tables.</div> <div>Use a custom plug-in.</div> <div>Use Dynamics 365 Web API.</div> <div>Use a web resource to display data.</div>
External system sends data to Dynamics 365 Sales.	<div>Use a custom plug-in.</div> <div>Use Dynamics 365 Web API.</div> <div>Use a web resource to display data.</div>

NEW QUESTION 119

HOTSPOT - (Topic 4)

A company uses Microsoft Dataverse to store patient Information-Patient information is managed using Dataverse forms. The company must enforce the following rules to manage data quality:

- Show or hide tabs in the main form based on the column value selected.
- Add a discount code automatically when a new patient row is added. You need to recommend a solution.

What should you recommend? To answer, select the appropriate options in the answer area.

NOTE: Each correct selection is worth one point.

Answer Area

Requirement	Solution
Show or hide tabs in the main form based on the column value selected.	<div>Business process flow</div> <div>Plug-in</div> <div>Client script</div> <div>Business rule</div> <div>Business process flow</div>
Add a discount code automatically when a new patient row is added.	<div>Business rule</div> <div>Client script</div> <div>Business rule</div> <div>Classic workflow</div> <div>Business process flow</div>

- A. Mastered

B. Not Mastered

Answer: A

Explanation:
Answer Area

Requirement	Solution
Show or hide tabs in the main form based on the column value selected.	<div>Business process flow</div> <div>Plug-in</div> <div>Client script</div> <div>Business rule</div> <div>Business process flow</div>
Add a discount code automatically when a new patient row is added.	<div>Business rule</div> <div>Client script</div> <div>Business rule</div> <div>Classic workflow</div> <div>Business process flow</div>

NEW QUESTION 124

DRAG DROP - (Topic 4)

A company plans to integrate Microsoft Power Platform with existing systems, including Microsoft Dynamics 365 Omni channel for Customer Service.

You need to recommend a solution for each requirement.

Which components should you recommend for the requirements?

To answer, drag the appropriate solutions to the correct requirements. Each solution may be used once, more than once, or not at all. You may need to drag the split bar between panes or scroll to view content.

Solutions	Answer Area	Requirement	Solution
Custom API		Display information about the contact in the Omnichannel app.	
Custom pages		Ensure only tables needed are exposed for integration purposes.	
Microsoft Power Virtual Agent		Display data hierarchy from other systems within Dynamics 365 without saving the data within Microsoft Dataverse.	

A. Mastered

B. Not Mastered

Answer: A

Explanation:

Solutions	Answer Area	Requirement	Solution
Custom API		Display information about the contact in the Omnichannel app.	Microsoft Power Virtual Agent
Custom pages		Ensure only tables needed are exposed for integration purposes.	Custom API
Microsoft Power Virtual Agent		Display data hierarchy from other systems within Dynamics 365 without saving the data within Microsoft Dataverse.	Custom pages

NEW QUESTION 126

- (Topic 4)

A company is struggling to gather insights from won and lost opportunities.

Users must be able to access the company's solution from mobile and desktop devices. The solution must meet the following requirements:

? context of other related data.

? Display data to users as charts and tables and provide drill-through capabilities.

You need to recommend a Power Platform tool to help the client visualize the data.

Which two technologies should you recommend? Each correct answer presents a complete solution.

NOTE: Each correct selection is worth one point.

A. Power BI

B. Power Automate

C. Power Virtual Agents

D. Power Apps

Answer: AD

Explanation:

A: Power BI is a business analytics service by Microsoft. It aims to provide interactive visualizations and business intelligence capabilities with an interface simple enough for end users to create their own reports and dashboards. It is part of the Microsoft Power Platform.

D: Power BI Apps are an easy way for designers to share different types of content at one time. App designers create the dashboards and reports and bundle them together into an app. The designers then share or publish the app to a location where you, the business user, can access it. Because related dashboards and reports are bundled together, it's easier for you to find and install in both the Power BI service (<https://powerbi.com>) and on your mobile device. After you install an app, you don't have to remember the names of a lot of different dashboards or reports because they're all together in one app, in your browser or on your mobile device.

Reference:

<https://docs.microsoft.com/en-us/power-bi/consumer/end-user-apps>

NEW QUESTION 128

- (Topic 4)

A company has a list of contacts in a Microsoft Excel file. The company wants to load the contact information

into a Power Platform solution.
You need to recommend a data-loading solution. What should you recommend?

- A. Use the Excel Template feature.
- B. Add to an existing list of contacts in a static worksheet.
- C. Use the import from Excel feature.

Answer: A

Explanation:

Import data that's stored somewhere else into your model-drvien app using the import feature in Power Apps. Every table has required columns that must exist in your input file. It's recommended that you download an Excel template, add your data, and then import the file to your app. The template saves time and effort. Don't add or modify columns in the template to avoid issues during the import. Note:
Step 1: Download an Excel template
To avoid mapping issue, it's recommended that you use an Excel template that you can download from your app. Once the template is downloaded add your data and then import the file back to your app. Remember don't add or modify columns in the template to avoid issues during the import process. Step 2: Import your data
Use the template that you downloaded in the previous step (modified with your data) and import the file to your app.
Reference:
<https://docs.microsoft.com/en-us/powerapps/user/import-data>

NEW QUESTION 130

HOTSPOT - (Topic 4)
You are designing a model-driven app that provides marketing, sales, and service operations to a company. The app must integrate with the following systems and data sources:
• A third-party marketing system for lead generation and website submissions.
• A Microsoft Excel Online file that contains manufacturing data on relevant products.
• A separate Microsoft Dataverse environment.
You need to recommend Power Automate connectors for the app.
Which connections should you recommend? To answer, select the appropriate options in the answer area.
NOTE: Each correct selection is worth one point.

Answer Area

Data source	Connector type
Third-party marketing system	<div>Power BI connector</div> <div>SharePoint connector</div> <div>Custom connector</div> <div>Microsoft Forms connector</div>
Microsoft Dataverse environment	<div>SharePoint</div> <div>Azure Data Factory</div> <div>Microsoft Dataverse</div>

- A. Mastered
- B. Not Mastered

Answer: A

Explanation:

Box 1: Custom connector
While Azure Logic Apps, Microsoft Power Automate, and Microsoft Power Apps offer over 325+ connectors to connect to Microsoft and non-Microsoft services, you may want to communicate with services that aren't available as prebuilt connectors.
Box 2: Microsoft Dataverse
The Microsoft Dataverse connector provides several triggers to start your flows and many actions that you can use to create or update data in Dataverse while your flows run. You can use Dataverse actions even if your flows don't use a trigger from the Dataverse connector.
Use the Microsoft Dataverse connector to create cloud flows that start when data changes in Dataverse tables and custom messages.

NEW QUESTION 133

HOTSPOT - (Topic 4)
You are designing a solution to continually import data from several data sources into Microsoft Dataverse. The solution must meet the following requirements:
• Include integrated error handling for records that fail to import successfully into Dataverse.
Augment data with AI and machine learning models. You need to select a component for each requirement
Which components should you use? To answer, select the appropriate options in the answer area
NOTE: Each correct selection is worth one point.

Answer Area

Requirement	Component
Augment data with AI and machine learning models.	<div>Analytical dataflow</div> <div>Power Apps dataflow</div> <div>Logic Apps</div> <div>Analytical dataflow</div> <div>Azure Data Factory</div>
Include integrated error handling in place for records that fail to import.	<div>Power Apps dataflow</div> <div>Power Apps dataflow</div> <div>Logic Apps</div> <div>Analytical dataflow</div>

- A. Mastered
- B. Not Mastered

Answer: A

Explanation:

Answer Area

Requirement

Augment data with AI and machine learning models.

Include integrated error handling in place for records that fail to import.

Component

Analytical dataflow

Power Apps dataflow

Logic Apps

Analytical dataflow

Azure Data Factory

Power Apps dataflow

Power Apps dataflow

Logic Apps

Analytical dataflow

NEW QUESTION 137

DRAG DROP - (Topic 4)

A company plans to integrate a model-driven app with external data sources. The company has the following requirements:

- Consume data in its data warehouse from Microsoft Dataverse.
- Use a plug-in to retrieve information from an external service.

You need to recommend a Microsoft Azure component for each requirement.

Which Azure components should you recommend? To answer, drag the appropriate Azure components to the correct requirements. Each Azure component may be used once, more than once, or not at all. You may need to drag the split bar between panes or scroll to view content.

NOTE: Each correct selection is worth one point.

Azure Event Hub

Azure Service Bus

Azure Data Factory

Azure Synapse Link

Answer Area

Requirement

Consume data in a data warehouse.

Consume data from an external source.

Azure component

- A. Mastered
- B. Not Mastered

Answer: A

Explanation:

Azure Event Hub

Azure Service Bus

Azure Data Factory

Azure Synapse Link

Answer Area

Requirement

Consume data in a data warehouse.

Consume data from an external source.

Azure component

Azure Data Factory

Azure Service Bus

NEW QUESTION 142

HOTSPOT - (Topic 4)

You are working with a customer to plan a go-live deployment to their production environment. The solution includes several apps and environment variables. The superuser team manages the production environment that is secured by using a specific environment Azure AD security group.

The following issues have been identified:

- The super user team cannot access make.powerapps.com to open and set the environment variables.
- Users are added to the environment Azure AD security group and are not able to access the model-driven app.
- Users are added to the environment Azure AD security group and are not able to access the canvas app.

You need to resolve the issues.

What should you do? To answer, select the appropriate options in the answer area. NOTE: Each correct selection is worth one point.

Answer Area

Issue

The superuser team cannot set the environment variables.

Users cannot access the model-driven app.

Users cannot access the canvas app.

Resolution

Assign the System Customizer role.

Assign the System Customizer role.

Assign the Basic User role.

Assign the Service Reader role.

Assign the Office Collaborator role.

Assign the Basic User role.

Assign the Basic User role.

Assign the Service Reader role.

Assign the Office Collaborator role.

Add the Azure AD Security Group.

Add users to an Azure AD Security Group.

Assign the System Customizer role.

Assign the Service Reader role.

Add users to the superuser team.

Add users to an Azure AD Security Group.

- A. Mastered
- B. Not Mastered

Answer: A

Explanation:

Answer Area

Issue

The superuser team cannot set the environment variables.

Users cannot access the model-driven app.

Users cannot access the canvas app.

Resolution

Assign the System Customizer role.

Assign the System Customizer role.

Assign the Basic User role.

Assign the Service Reader role.

Assign the Office Collaborator role.

Assign the Basic User role.

Assign the Basic User role.

Assign the Service Reader role.

Assign the Office Collaborator role.

Add the Azure AD Security Group.

Add users to an Azure AD Security Group.

Assign the System Customizer role.

Assign the Service Reader role.

Add users to the superuser team.

Add users to an Azure AD Security Group.

NEW QUESTION 147

HOTSPOT - (Topic 4)

You are a evaluating a solution design. You need to test the following scenarios: Mimic a user using an app.

- Obtain formal approval that an app meets customer-provided criteria.
- Confirmation that an app can manage expected peak loads.

Which test types should you use? To answer, select the appropriate options in the answer area.

NOTE: Each correct selection is worth one point.

Answer Area

Scenario

Mimic a user using an app.

Obtain formal approval that an app meets customer-provided criteria.

Confirmation that an app can manage expected peak loads.

Test type

Acceptance testing

UI testing

Acceptance testing

Performance testing

Load testing

Acceptance testing

Migration testing

Acceptance testing

Performance testing

UI testing

Performance testing

Unit testing

Acceptance testing

Performance testing

Integration testing

Answer:

Answer Area

Scenario

Mimic a user using an app.

Obtain formal approval that an app meets customer-provided criteria.

Confirmation that an app can manage expected peak loads.

Test type

Acceptance testing

UI testing

Acceptance testing

Performance testing

Load testing

Acceptance testing

Migration testing

Acceptance testing

Performance testing

UI testing

Performance testing

Unit testing

Acceptance testing

Performance testing

Integration testing

- A. Mastered
- B. Not Mastered

Answer: A

NEW QUESTION 152

- (Topic 4)

You are designing a Power Platform solution for a company.

Users must be granted access only to data that is relevant to them.

You need to recommend actions to meet the requirements.

Which two recommendations should you make? Each correct answer presents part of the solution.
NOTE: Each correct selection is worth one point.

- A. Add column security profiles to applicable teams.
- B. Define and configure security roles.
- C. Create teams and assign security roles and users to the teams.
- D. Create business units and assign security roles to the business units.

Answer: BD

Explanation:

To control data access, you must set up an organizational structure that both protects sensitive data and enables collaboration. You do this by setting up business units, security roles, and field security profiles.
Reference:
<https://docs.microsoft.com/en-us/power-platform/admin/security-roles-privileges>

NEW QUESTION 157

- (Topic 4)
A company wants to add an interactive checklist to a Power Platform solution to ensure that salespeople are following the same steps when qualifying leads. You need to recommend a solution that will incorporate this checklist. What should you recommend?

- A. Mastered
- B. Not Mastered

Answer: A

NEW QUESTION 159

HOTSPOT - (Topic 4)
A company offers continuing education courses for medical professionals. Each time a course is offered, the company tracks that the session has taken place in an Excel workbook.
The company maintains a list of required qualifications for an educator to teach a course. Educator qualifications range from languages spoken to advanced degrees.
The company needs the following custom table relationships defined:
? Associate educators with a list of their professional qualifications.
? Assign a primary educator to each course that is held.
? Collect information about every course that is held.
You need to determine the type of relationship that best fits the requirement.
Which type of table relationship should you use? To answer, select the appropriate options in the answer area.
NOTE: Each correct selection is worth one point.

Requirement	Relationship
Educators must be associated with their qualifications.	<div><div></div><div>Many-to-many relationship that uses a system generated table</div><div>Many-to-many relationship that uses a custom table</div><div>One-to-many relationship</div></div>
When a course is held there must be a primary educator assigned.	<div><div></div><div>Many-to-many relationship that uses a system generated table</div><div>Many-to-many relationship that uses a custom table</div><div>One-to-many relationship</div></div>
When a course is held, the company needs to collect information on that session.	<div><div></div><div>Many-to-many relationship that uses a system generated table</div><div>Many-to-many relationship that uses a custom table</div><div>One-to-many relationship</div></div>

- A. Mastered
- B. Not Mastered

Answer: A

Explanation:

Requirement	Relationship
Educators must be associated with their qualifications.	<div><div></div><div>Many-to-many relationship that uses a system generated table</div><div>Many-to-many relationship that uses a custom table</div><div>One-to-many relationship</div></div>
When a course is held there must be a primary educator assigned.	<div><div></div><div>Many-to-many relationship that uses a system generated table</div><div>Many-to-many relationship that uses a custom table</div><div>One-to-many relationship</div></div>
When a course is held, the company needs to collect information on that session.	<div><div></div><div>Many-to-many relationship that uses a system generated table</div><div>Many-to-many relationship that uses a custom table</div><div>One-to-many relationship</div></div>

NEW QUESTION 160

HOTSPOT - (Topic 4)

You are supporting the go-live process for a company. The company is responsible for migrating data to the Microsoft Power Platform by using a custom solution. The company reports the following issues:

- Migration processes fail due to operation timeouts.
- Records that include lookup columns often fail to load. You need to recommend a solution.

What should you recommend? To answer, select the appropriate options in the answer area.

NOTE: Each correct selection is worth one point.

Issue	Solution
Migration processes fail due to operation timeouts.	<div><div>Increase multithreading and/or batch size settings.</div><div>Increase multithreading and/or batch size settings.</div><div>Decrease multithreading and/or batch size settings.</div><div>Ensure you are loading data into all tables at the same time.</div><div>Ensure you are loading data into tables in a particular order.</div></div>
Records that include lookup columns often fail to load.	<div><div>Ensure you are loading data into tables in a specific order.</div><div>Increase multithreading and/or batch size settings.</div><div>Decrease multithreading and/or batch size settings.</div><div>Ensure you are loading data into all tables at the same time.</div><div>Ensure you are loading data into tables in a specific order.</div></div>

- A. Mastered
B. Not Mastered

Answer: A

Explanation:

Issue	Solution
Migration processes fail due to operation timeouts.	<div><div>Increase multithreading and/or batch size settings.</div><div>Increase multithreading and/or batch size settings.</div><div>Decrease multithreading and/or batch size settings.</div><div>Ensure you are loading data into all tables at the same time.</div><div>Ensure you are loading data into tables in a particular order.</div></div>
Records that include lookup columns often fail to load.	<div><div>Ensure you are loading data into tables in a specific order.</div><div>Increase multithreading and/or batch size settings.</div><div>Decrease multithreading and/or batch size settings.</div><div>Ensure you are loading data into all tables at the same time.</div><div>Ensure you are loading data into tables in a specific order.</div></div>

NEW QUESTION 164

HOTSPOT - (Topic 4)

You are designing a Microsoft Power Platform solution for a company.

Which components should you recommend? To answer, select the appropriate options in the answer area.

NOTE: Each correct selection is worth one point.

Requirement

Component

Allow users to change the status of a record only if a custom column named Reason is populated.

	▼
Business rule	
Power Automate flow	
Asynchronous plug-in	
Background workflow	

Prompt users to update each opportunity product record when an opportunity is won or lost.

	▼
JavaScript code	
Real-time workflow	
Power Automate flow	
Asynchronous plug-in	

- A. Mastered
- B. Not Mastered

Answer: A

Explanation:

Box 1: Business rule

You can create business rules and recommendations to apply logic and validations without writing code or creating plug-ins. Business rules provide a simple interface to implement and maintain fast-changing and commonly used rules.

Box 2: Power Automate flow

Trigger the Power Automate flow with “When a record is updated”, then add a Condition in the flow and configure it with Status Label equals to Won.

NEW QUESTION 168

- (Topic 4)

A company has a model-driven app. The app has forms with both Business Rules and JavaScript added to handle the business logic on the form. The form contains logic that is enforced by using business rules. The company wants to apply the business rules to all forms in the app. You need to recommend a simplified form setup so the form can be maintained moving forward. What should you recommend?

- A. Manage the business logic with a Power Apps Component Framework (PCF) control.
- B. Evaluate whether complex parts of the logic can be solved by using Power Apps Component Framework (PCF) controls.
- C. Use Business Rules for the remaining functionality.
- D. Remove the Business Rules and use only JavaScript.
- E. Update logic to ensure Business Rules are optimized.
- F. Use JavaScript for the remaining functionality.

Answer: B

Explanation:

PCF controls are reusable. Reference:

<https://docs.microsoft.com/en-us/powerapps/developer/component-framework/overview>

NEW QUESTION 173

- (Topic 4)

A local bank uses Microsoft Power Platform apps to store customer data.

The bank IT director discovers that all employees can see the social security numbers of their customers. The IT team does not understand how field-level security works and needs help with the design.

You need to recommend a solution to the bank that meets the following requirements:

- The system must restrict access to customer social security numbers to the vice president of finance only.

The vice president of finance must be able to read and update customer social security numbers.

Which two actions should you recommend? Each correct answer presents part of the solution.

NOT: Each correct selection is worth one point

- A. Set the values for the read permission and for the update permission for social security number to yet
- B. Enable field-level security for the member table.
- C. Create a held-level security profile.
- D. Enable field-level security for the social security number column.

Answer: CD

Explanation:

Field-level security is managed by the security profiles. To implement field-level security, a system administrator performs the following tasks.

? Enable field security on one or more fields for a given entity.

? Associate one or more existing security profiles, or create one or more new security profiles to grant the appropriate access to specific users or teams.

Reference:

<https://docs.microsoft.com/en-us/power-platform/admin/field-level-security>

NEW QUESTION 176

- (Topic 4)

You are evaluating a solution design for a model-driven app that will have a large number of complex forms.

Many of the forms take up to 10 seconds to load.

You need to recommend solution to speed up loading times for the forms.

Which two solutions should you recommend? Each correct answer presents a complete solution.

NOTE: Each correct selection is worth one point.

- A. Consolidate and reduce scripts.
- B. Use synchronous JavaScript requests.
- C. Move scripts into the OnLoad event.
- D. Remove unnecessary fields.

Answer: AD

Explanation:

Controls that require extra data beyond the primary record produce the most strain on form responsiveness and loading speed. These controls fetch data over the network and often involve a waiting period (seen as progress indicators) because it can take time to transmit the data.

Keep only the most frequently used of these controls on the default tab.

Reference:

<https://docs.microsoft.com/en-us/powerapps/maker/model-driven-apps/design-performant-forms>

NEW QUESTION 179

- (Topic 4)

You are assessing the capabilities of a project for a customer in the education sector. The solution must meet the following requirements

- include curriculum and student management capabilities.
- Conform to on-going Microsoft platform upgrades.
- Minimize custom coding and configuration

You need to recommend a solution. What should you recommend?

- A. Power Apps portal
- B. Microsoft Power Platform admin center
- C. AppSource
- D. Microsoft 365 admin center

Answer: A

NEW QUESTION 181

- (Topic 4)

Note: This question is part of a series of questions that present the same scenario. Each question in the series contains a unique solution that might meet the stated goals. Some question sets might have more than one correct solution, while others might not have a correct solution.

After you answer a question in this section, you will NOT be able to return to it. As a result these questions will not appear in the review screen.

A company uses a Microsoft Excel sheet to manage its loan application process. The company wants to optimize the process.

You need to discover inefficiencies in the process.

Solution: Record the actions required to complete the loan application process in the process advisor feature. Use task mining to discover inefficiencies in the process.

Does the solution meet the goal?

- A. Yes
- B. No

Answer: B

NEW QUESTION 185

- (Topic 4)

You are designing a model-driven app that allows a company to manage sales opportunities.

The company has a complex security model that includes the following requirements:

- ? The vice president of sales must be able to see opportunities for sales managers and sales representatives.
- ? Sales managers must be able to see opportunities for all sales representatives.
- ? Sales representatives must only see opportunities that they own.

You need to recommend security tools for controlling user access.

Which two tools should you recommend? Each correct answer presents part of the solution.

NOTE: Each correct selection is worth one point.

- A. Account hierarchy
- B. Field security profile
- C. Position hierarchy
- D. Security roles

Answer: CD

Explanation:

With the position hierarchy security, a user at a higher position has access to the records owned by a lower position user or by the team that a user is a member of, and to the records that are directly shared to the user or the team that a user is a member of.

The hierarchy security model is an extension to the earlier security models that use business units, security roles, sharing, and teams. It can be used in conjunction with all other existing security models.

Reference:

<https://docs.microsoft.com/en-us/dynamics365/customerengagement/on-premises/developer/security-dev/hierarchical-security-control-access-entities>

NEW QUESTION 189

HOTSPOT - (Topic 4)

You need to design a Power Platform solution that meets the following requirements:

? Capture data from a row during deletion to be used in an automated process.

? Use AI to process forms and automate data entry from paper-based forms.

Which requirements can be met by using out-of-the box Power Platform components?

Instructions: For each of the following statements, select Yes if the statement is true. Otherwise, select No.

NOTE: Each correct selection is worth one point.

	Yes	No
Capture data from a row during deletion to be used in an automated process.	<input type="radio"/>	<input type="radio"/>
Use AI to process forms and automate data entry from paper-based forms.	<input type="radio"/>	<input type="radio"/>

- A. Mastered
- B. Not Mastered

Answer: A

Explanation:

Box 1: Yes

This can be done with Dataverse flows: The When a row is added, modified or deleted trigger runs a flow whenever a row of a selected table and scope changes or is created.

Box 2: Yes

AI Builder is a Microsoft Power Platform capability that provides AI models that are designed to optimize your business processes. AI Builder enables your business to use AI to automate processes and glean insights from your data in Power Apps and Power Automate.

NEW QUESTION 194

- (Topic 4)

Note: This question is part of a series of questions that present the same scenario. Each question in the series contains a unique solution that might meet the stated goals. Some question sets might have more than one correct solution, while others might not have a correct solution.

After you answer a question in this section, you will NOT be able to return to it. As a result, these questions will not appear in the review screen.

A company plans to automate the expense approval process.

Users currently enter data into an on-premises SQL Server database. You need to allow users to submit expenses from mobile devices.

Solution: Create a canvas app for expense data entry. Install an on-premises gateway. Create a cloud flow for approval and to add data to the SQL Server database.

Does the solution meet the goal?

- A. Yes
- B. No

Answer: A

NEW QUESTION 198

HOTSPOT - (Topic 4)

A multinational organization uses a single Microsoft Power Platform environment. The instance hosts multiple customizations for different users m different regions.

Users in some regions complain about slow toad time of the customizations. You need to architect a solution based on the main requirement.

What should you recommend? To answer, select the appropriate option in the answer area.

NOTE: Each correct selection is worth one point.

Goal	Suggested solution
Divisions actively collaborate on customers.	Single instance; use Microsoft Azure Traffic Manager where needed Multi-tenant with one Power Platform environment in each region Multiple instances in different regions; Power BI for reporting Single multi-geo instance
Regions have separate customers but use the same functionality and need global reporting.	Multiple instances in different regions with data replication Multi-tenant with one Power Platform environment in each region Multiple instances in different regions; Power BI for reporting Single multi-geo instance
Regions have separate functionality and customers but need global reporting on data.	Single instance; use Microsoft Azure Traffic Manager Multi-tenant with one Power Platform environment in each region Multiple instances in different regions; Power BI for reporting Single multi-geo instance

- A. Mastered
- B. Not Mastered

Answer: A

Explanation:

Answer Area

Goal	Suggested solution
Divisions actively collaborate on customers.	Single instance; use Microsoft Azure Traffic Manager where needed Multi-tenant with one Power Platform environment in each region Multiple instances in different regions; Power BI for reporting Single multi-geo instance
Regions have separate customers but use the same functionality and need global reporting.	Multiple instances in different regions with data replication Multi-tenant with one Power Platform environment in each region Multiple instances in different regions; Power BI for reporting Single multi-geo instance
Regions have separate functionality and customers but need global reporting on data.	Single instance; use Microsoft Azure Traffic Manager Multi-tenant with one Power Platform environment in each region Multiple instances in different regions; Power BI for reporting Single multi-geo instance

NEW QUESTION 199

- (Topic 4)

You are creating a scope of work document for a solution. You have the following requirements:

- Track support cases, first response time, and resolution time.
- Include a chat-like interface that allows managers to check the status of cases with minimal manual searching.
- Allow cases to have multiple different priority levels.

You need to include the required Dynamics 365 and Microsoft Power Platform components. Which two components should you include? Each correct answer presents part of the solution.

NOT: Each correct selection is worth one point.

- A. Dynamics 365 Customer Service
- B. Power virtual Agents
- C. PowerBI
- D. Dynamics 365 Customer Voice

Answer: AB

Explanation:

Power Virtual Agents lets you create powerful chatbots that can answer questions posed by your customers, other employees, or visitors to your website or service.

Use Dynamics 365 Customer Service to:

- ? Track customer issues through cases
- ? Record all interactions related to a case
- ? Share information in the knowledge base
- ? Create queues and route cases to the right channels
- ? Create and track service levels through service-level agreements (SLAs)
- ? Define service terms through entitlements
- ? Manage performance and productivity through reports and dashboards
- ? Create and schedule services
- ? Participate in chats
- ? Manage conversations across channels

Reference:

<https://docs.microsoft.com/en-us/power-virtual-agents/fundamentals-what-is-power-virtual-agents>

<https://docs.microsoft.com/en-us/dynamics365/customer-service/overview>

NEW QUESTION 204

HOTSPOT - (Topic 4)

You are designing a Power Platform solution for a company that provides in-home appliance maintenance. When a customer schedules a service appointment, a dispatcher assigns one technician for a specific time and location.

The solution must capture information about the technician assigned to each appointment and the list of tools that the technician must bring to the appointment.

You need to recommend the data type for the captured information.

Which data type should you use? To answer, select the appropriate options in the answer area.

NOTE: Each correct selection is worth one point.

Requirement

Data type

Capture information about the technician assigned to each service appointment.

	▼
Choice	
Choices	
Customer	
Lookup	

Select the tools that the technician must bring to an appointment.

	▼
Choices	
Customer	
Lookup	
Text	

- A. Mastered
- B. Not Mastered

Answer: A

Explanation:

Box 1: Choice

Like Choices below, but can only select one of the option.

Box 2: Choices

You can customize forms (main, quick create, and quick view) and email templates by adding multi-select columns that are called Choices. When you add a choices column, you can specify multiple values that will be available for users to select. When users fill out the form they can select one, multiple, or all the values displayed in a drop-down list.

NEW QUESTION 205

- (Topic 4)

Note: This question is part of a series of questions that present the same scenario. Each question in the series contains a unique solution that might meet the stated goals. Some question sets might have more than one correct solution, while others might not have a correct solution.

After you answer a question in this section, you will NOT be able to return to it. As a result, these questions will not appear in the review screen.

A company uses a Microsoft Excel sheet to manage its loan application process. The company wants to optimize the process.

You need to discover inefficiencies in the process.

Solution: Upload the activity data stored in the Excel sheet to the process advisor feature. Use task mining to discover inefficiencies in the process.

Does the solution meet the goal?

- A. Mastered
- B. Not Mastered

Answer: A

NEW QUESTION 210

- (Topic 4)

You are designing a Power Platform solution.

During quality assurance testing the API limits are reached. You need to identify and resolve the issue.

Which two actions should you recommend? Each correct answer presents part of the solution.

NOTE: Each correct selection is worth one point.

- A. Allocate Microsoft Dataverse capacity add-on subscriptions.
- B. Use the out-of-the-box User Summary report from the Reports section of the solution's model-driven app.
- C. In the Power Platform admin center Review the Home tab Dataverse analytics dashboard.
- D. In the Power Platform admin center, review the Usage section of the Power Apps analytics dashboard.
- E. In the Power Platform admin center, review the Runs section of the Power Automate analytics dashboard.

Answer: AC

Explanation:

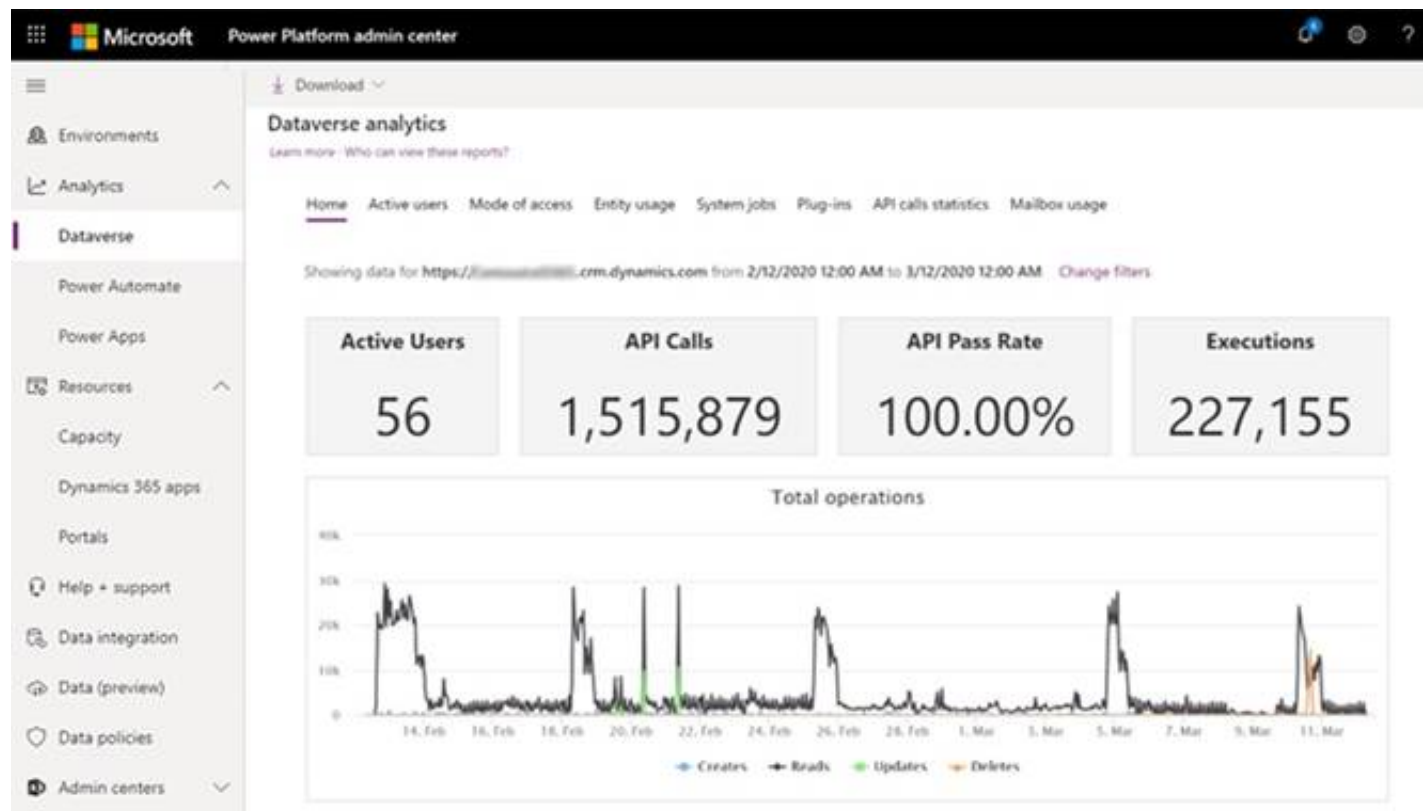
A: When users exceed their limits, administrators can see this in the admin center (see below). You can do either one of the following:

? Adjust the app or flow to use fewer API requests

? Purchase the Power Apps and Power Automate capacity add-on for your organization.

C: Home (default) Dashboard.

This is the default dashboard that provides information on the number of active Dataverse users, storage usage, the most active workflows, and more.



API Calls: API Calls Number of API calls that were made by the Dataverse environment for the selected time period.

Reference:

<https://docs.microsoft.com/en-us/power-platform/admin/api-request-limits-allocations> <https://docs.microsoft.com/en-us/power-platform/admin/analytics-common-data-service>

NEW QUESTION 214

- (Topic 4)

You are designing an integration between an Azure SQL database and a model-driven app-You have the following requirements:

- Audit updates to the data.
- Assign security role access to tables at the user level.
- Assign security role access to tables at the organization level.
- Enable change tracking.
- Add and update data.

You need to implement virtual tables.

Which two requirements can you meet by using virtual tables? Each correct answer presents a complete solution.

NOTE Each correct selection is worth one point.

- A. Enable change tracking.
- B. Assign security role access to tables at the user level.
- C. Add and update data.
- D. Assign security role access to tables at the organization level.
- E. Audit updates to the data.

Answer: BD

NEW QUESTION 217

HOTSPOT - (Topic 4)

A company plans to create a Power Platform solution that integrates with Dynamics 365 Sales.

The solution must meet the following requirements:

? Connect directly with a Microsoft Azure SQL database as an external data source at run time where specific data is available in the Dynamics 365 Sales solution without the need for data replication.

? An external system needs to send data to the company's Dynamics 365 Sales solution.

You need to recommend the most suitable solution to integrate Dynamics 365 Sales with both systems.

What should you recommend? To answer, select the appropriate option in the answer area.

NOTE: Each correct selection is worth one point.

Integration requirement	Solutions
Have read-only visibility of data from an external Azure SQL database.	<div> <input type="text"/> <ul style="list-style-type: none"> Use virtual tables. Use a custom plug-in. Use Dynamics 365 Web API. Use a web resource to display data. </div>
External system sends data to Dynamics 365 Sales.	<div> <input type="text"/> <ul style="list-style-type: none"> Use a custom plug-in. Use Dynamics 365 Web API. Use a web resource to display data. </div>


Answer:

Integration requirement

Solutions

Have read-only visibility of data from an external Azure SQL database.

▼

Use virtual tables. 

Use a custom plug-in.


Use Dynamics 365 Web API.

Use a web resource to display data.

External system sends data to Dynamics 365 Sales.

▼

Use a custom plug-in.

Use Dynamics 365 Web API. 

Use a web resource to display data.

- A. Mastered
 B. Not Mastered

Answer: A

Explanation:

Box 1: Use Virtual tables

A virtual entity is a custom entity in Dynamics 365 Customer Engagement (on-premises) that has fields containing data from an external data source. Virtual entities appear in your app to users as regular entity records, but contain data that is sourced from an external database, such as an Azure SQL Database. Records based on virtual entities are available in all clients including custom clients developed using the Dynamics 365 Customer Engagement Web Services. Box 2: Use Dynamics 365 Web API.

Dynamics 365 Web Services API: Many times, straight database-to-database integrations aren't a possibility. In these cases, the development of a solution may depend on utilization of the Dynamics 365 Customer Engagement web services API (Application Programming Interface).

NEW QUESTION 219

HOTSPOT - (Topic 4)

A company is creating a Power Platform solution to manage employees.

The company has the following requirements:

? Allow only the human resource manager to change an employee's employment status when an employee is dismissed.

? Allow only approved device types to access the solution and company data.

You need to recommend a solution that meets the requirements.

What should you recommend? To answer, select the appropriate options in the answer area.

NOTE: Each correct selection is worth one point.

Requirement


Configuration

Allow only the human resource manager to change an employee's employment status when an employee is dismissed.

▼

Team access

Privacy preference


Field security profile 

Hierarchy security profile

Allow only approved device types to access the solution and company data.

▼

Endpoint security

Compliance policy 

Conditional access

Mobile threat integration

- A. Mastered
 B. Not Mastered

Answer: A

Explanation:

Box 1: Field security profile

Record-level permissions are granted at the entity level, but you may have certain fields associated with an entity that contain data that is more sensitive than the other fields. For these situations, you use field-level security to control access to specific fields.

Field-level security is available for the default fields on most out-of-box entities, custom fields, and custom fields on custom entities. Field-level security is managed by the security profiles.

Box 2: Compliance policy

Compliance policy settings – Tenant-wide settings that are like a built-in compliance policy that every device receives. Compliance policy settings set a baseline for how compliance policy works in your Intune environment, including whether devices that haven't received any device compliance policies are compliant or noncompliant.

Note: Mobile device management (MDM) solutions like Intune can help protect organizational data by requiring users and devices to meet some requirements. In Intune, this feature is called compliance policies.

Compliance policies in Intune:

Define the rules and settings that users and devices must meet to be compliant.

Include actions that apply to devices that are noncompliant. Actions for noncompliance can alert users to the conditions of noncompliance and safeguard data on noncompliant devices.

Can be combined with Conditional Access, which can then block users and devices that don't meet the rules.

NEW QUESTION 224

HOTSPOT - (Topic 4)

A company plans to transition from an existing proprietary solution to a Power Platform solution. The company is consolidating data from several sources. The company reports the following data quality issues with the existing solution:

- ? Users often encounter a character limit when entering data.
- ? The database includes multiple instances of duplicate records.

You need to recommend solutions to ensure that the data quality issues are not present in the Power Platform solution. What should you recommend? To answer, select the appropriate options in the answer area.

NOTE: Each correct selection is worth one point.

Issue	Solution
Users often encounter a character limit when entering data.	<div><div></div><div>Define a data mask.</div><div>Define and implement duplicate detection rules.</div><div>Define the data type and format for each column.</div></div>
The database includes multiple instances of some records.	<div><div></div><div>Define requirements for data entry.</div><div>Define and implement duplicate detection rules.</div><div>Define the data type and format for each column.</div></div>

- A. Mastered
- B. Not Mastered

Answer: A

Explanation:

Box 1: Define the data type and format for each column Increase the data type size of the column.

Box 2: Define and implement duplicate detection rules

NEW QUESTION 229

.....

Thank You for Trying Our Product

We offer two products:

1st - We have Practice Tests Software with Actual Exam Questions

2nd - Questions and Answers in PDF Format

PL-600 Practice Exam Features:

- * PL-600 Questions and Answers Updated Frequently
- * PL-600 Practice Questions Verified by Expert Senior Certified Staff
- * PL-600 Most Realistic Questions that Guarantee you a Pass on Your First Try
- * PL-600 Practice Test Questions in Multiple Choice Formats and Updates for 1 Year

100% Actual & Verified — Instant Download, Please Click
[Order The PL-600 Practice Test Here](#)