

## Exam Questions 200-901

Developing Applications and Automating Workflows using Cisco Core Platforms (DEVASC)

<https://www.2passeasy.com/dumps/200-901/>



### NEW QUESTION 1

- (Exam Topic 2)

A developer needs a list of clients connected to a specific device in a Meraki network. After making a REST API call, the developer receives an unfamiliar response code. Which Cisco DevNet resource should be used to identify the meaning of the response code?

- A. API documentation
- B. Sandbox
- C. Learning Labs
- D. Code Exchange

**Answer:** A

### NEW QUESTION 2

- (Exam Topic 2)

Refer to the exhibit.

```
import requests
from requests.auth import HTTPBasicAuth
headers = {'Content-Type': 'application/json'}
base_url = 'https://10.1.2.3'
auth_url = '/dna/system/api/v1/auth/token'
devices_url = '/dna/intent/api/v1/network-device'

token = requests.post(
    base_url + auth_url, headers=headers,
    auth=HTTPBasicAuth(username="admin", password="DevNet123"))
data = token.json()

query_string_params = {'platformId': 'C9500-40X'}
response = requests.get(
    base_url + devices_url, headers=headers,
    params=query_string_params)
print(f'{response.code}')
```

A network engineer must manage the network devices. The engineer prepares a Python scripts to authenticate to the Cisco to DNA Center API and request a device list. The device request fails and returns errors code 401. Which action solves the problem?

- A. Update the API UR
- B. which matched the API endpoint for device list.
- C. Send the request to another network in case there are reachability Issues.
- D. Send the Authentication header In the request with a valid configuration.
- E. Update the credentials that are already supplied and retry the request

**Answer:** D

### NEW QUESTION 3

- (Exam Topic 2)

Which application should be used to externally access all applications deployed in the same host machine with a single public IP address and port, when each application listens on different local ports?

- A. reverse proxy
- B. load balancer
- C. DNS
- D. firewall

**Answer:** D

### NEW QUESTION 4

- (Exam Topic 2)

Which protocol runs over TCP port 22?

- A. SSH
- B. HTTP
- C. Telnet
- D. NETCONF

**Answer:** A

### NEW QUESTION 5

- (Exam Topic 2)

Refer to the exhibit.

### Generating Client ID and API Key:

- Log in to your AMP for Endpoints Console.
- Go to Accounts > Business Settings.
- Click Configure API Credentials under Features to generate the Client ID and secure API Key.

Once you have the API client ID and API key, you can make the API calls as follows:

```
https://<your_client_id>:<your_api_key>@<api_endpoint>
```

Alternatively you can use Basic HTTP Authentication. Base 64 encode the string ":", and send that prefixed with the string "Basic" as the authorization header. For instance, if your client\_id was 1234, and your api\_key was "atest", then it would be base64 encoded to "MTIzNDphdGVzdA==", and your header would be:

```
Authorization: Basic MTIzNDphdGVzdA==
```

The documentation outlines how to use credentials for the AMP API Which script successfully performs an API call using basic authentication?  
A)

```
import requests
amp_client_id = 'alb2c3d4e5f6g7h8i9j0'
amp_login_password = 'l0g1n_p@ssw0rd'
url = 'https://api.amp.cisco.com/v1/version'
request = requests.get(url,
    auth=(amp_client_id, amp_login_password))
print(request.json())
```

B)

```
import requests
amp_client_id = 'alb2c3d4e5f6g7h8i9j0'
amp_api_key = 'alb2c3d4-e5f6-g7h8-i9j0-k1l2m3n4o5p6'
url = 'https://api.amp.cisco.com/v1/version'
request = requests.get(url)
print(request.json())
```

C)

```
import requests
amp_auth_token = 'alb2c3d4e5f6g7h8i9j0 k1l2m3n4o5p6'
url = 'https://api.amp.cisco.com/v1/version'
request = requests.get(url,
    auth=(amp_auth_token))
print(request.json())
```

D)

```
import requests
amp_client_id = 'alb2c3d4e5f6g7h8i9j0'
amp_api_key = 'alb2c3d4-e5f6-g7h8-i9j0-k1l2m3n4o5p6'
url = 'https://api.amp.cisco.com/v1/version'
request = requests.get(url,
    auth=(amp_client_id, amp_api_key))
print(request.json())
```

A. Option

- B. Option
- C. Option
- D. Option

Answer: D

#### NEW QUESTION 6

- (Exam Topic 2)

Refer to the exhibit.

**API v1 documentation:**  
 Authentication and authorization: Bearer Token  
 Inventory endpoint: /api/v1/inventory  
 Method: GET  
 Response formats: text/html, application/json, application/html

**Token:**  
 dXNlcm5hbWU6cGFzc3dvcmQ=

**Api call:**  
 GET /api/v1/inventory HTTP/1.1  
 Host: example.com

**Response:**  
 HTTP/1.1 401 Unauthorized

An API call is constructed to retrieve the inventory in XML format by using the API. The response to the call is 401 Unauthorized. Which two headers must be added to the API call? (Choose two.)

- ☐ Accept: application/xml
- ☐ Content-Type: application/xml
- ☐ Authentication: Bearer dXNlcm5hbWU6cGFzc3dvcmQ=
- ☐ Bearer-Token: dXNlcm5hbWU6cGFzc3dvcmQ=
- ☐ Authorization: Bearer dXNlcm5hbWU6cGFzc3dvcmQ=

- A. Option A
- B. Option B
- C. Option C
- D. Option D
- E. Option E

Answer: BE

#### NEW QUESTION 7

- (Exam Topic 2)

Before which process is code review performed when version control is used?

- A. Branching code
- B. Merge of code
- C. Checkout of code
- D. Committing code

Answer: D

#### NEW QUESTION 8

- (Exam Topic 2)

How do XML and JSON compare regarding functionality?

- A. JSON natively supports arrays and XML does not natively support arrays.
- B. XML provides support for mapping data structures into host languages than JSON.
- C. XML provides more human readability than JSON.



D. JSON provides support for data types than XML.

**Answer:** A

#### NEW QUESTION 9

- (Exam Topic 2)

Refer to the exhibit.

```
SDK Documentation:

Class: Devices

Device List: get_device_list()
Get device: get_device_by_id(id)
Delete device: delete_device_by_id(id)
Device status: inventoryStatusDetail
Device Parameters:
    id
    upTime
    type
```

A Python script must delete all Cisco Catalyst 9300 Series switches that have an uptime that is greater than 90 days. The script must also query for the status of all the other devices. Drag and drop the code from the bottom onto the bottom box; the code is missing to complete the script. Not all options are used.

**Answer Area**

```
from dnacentersdk import DNACenterAPI

device_type = "Cisco Catalyst 9300 Switch"
api_session = DNACenterAPI(
    base_url="https://sandboxdnac.cisco.com",
    username="user", password="password"
)

devices = 

for device in devices:
    if int(device.upTime.split()[0]) > 90:
        if device.type == device_type:
            output = 
            print(output)

        else:
            selected_device = 
            output = 
            print(output)
```

- A. Mastered
- B. Not Mastered

**Answer:** A

#### Explanation:

Table Description automatically generated

#### NEW QUESTION 10

- (Exam Topic 2)

A developer creates a web application that receives a username and password and uses them to sync the credentials to other services through HTTPS. API keys to services are part of the configuration files of the application, but the credentials to the database that stores the synchronization logs are obtained through an external vault service. What is the security issue in this scenario?

- A. Communication between the application and the services is not encrypted.
- B. The database credentials should be stored in the configuration files so that they are secured on the same server.
- C. The API keys are stored in the configuration files but should be stored in the vault service.
- D. The synchronization logs should be encrypted and not stored in a relational database.

Answer: A

#### NEW QUESTION 10

- (Exam Topic 2)

A developer is creating a script to interact with a REST API service which requires basic authentication. The credentials are "devnet:391665405" and the Base64 encoding of the credentials is "GV2bmV0dXNlcjpDaXNj=". Which payload and header combination must be used for authentication?

- A.
- ```
payload = {
    'Authorization' : 'Basic GV2bmV0dXNlcjpDaXNj=',
    'Content-Type' : 'application/json'
}
headers= {}
```
- B.
- ```
payload = {}
headers= {
    'Authorization' : 'Basic GV2bmV0dXNlcjpDaXNj=',
    'Content-Type' : 'application/json'
}
```
- C.
- ```
payload = {
    'Authorization' : 'Bearer GV2bmV0dXNlcjpDaXNj=',
    'Content-Type' : 'application/json'
}
headers= {}
```
- D.
- ```
payload = {}
headers= {
    'Authorization' : 'Bearer GV2bmV0dXNlcjpDaXNj=',
    'Content-Type' : 'application/json'
}
```

- A. Option A  
B. Option B  
C. Option C  
D. Option D

Answer: B

#### Explanation:

<https://developer.cisco.com/docs/epnm/#!how-to-authenticate/authorization>

#### NEW QUESTION 15

- (Exam Topic 2)

What is the function of IP address in networking?

- A. specifies the type of traffic that is allowed to roam on a network  
B. represents the unique ID that is assigned to one host on a network  
C. specifies resource's location and the mechanism to retrieve it  
D. represents a network connection on specific devices

Answer: B

#### NEW QUESTION 18

- (Exam Topic 2)

Which tool is used to block all traffic to the domain by using a single API call?

- A. Cisco ISE  
B. Cisco Firepower  
C. Cisco AMP  
D. Cisco Umbrella

Answer: B

#### NEW QUESTION 19

- (Exam Topic 2)

Drag and drop the code snippets from the bottom to the blanks in the code to complete the HTTP response. Not all options are used.

Request URL: http://www.example.com/

: GET

: 200 OK

Remote Address: [2606:2800:220:1:248:1893:25c8:1946]:80

Referrer Policy: strict-origin-when-cross-origin

Response Headersview source

Accept-Ranges: bytes

Age: 396561

Cache-Control: max-age=604800

: gzip

Content-Length: 648

: text/html; charset=UTF-8

Date: Sat, 20 Nov 2020 20:49:34 GMT

Etag: "3147526947+ident"

Expires: Sat, 21 Nov 2020 20:49:34 GMT

Last-Modified: Thu, 17 Oct 2019 07:18:26 GMT

Server: ECS (dna/63AA)

Vary: Accept-Encoding

X-Cache: HIT

Request Headersview source

Accept: text/html,application/xhtml+xml,application/xml;q=0.9, image/avif,image/webp,image/apng,\*/\*;q=0.8,application/signed-exchange;v=b3;q=0.9

Accept-Encoding: gzip, deflate

Accept-Language: en-US,en;q=0.9

Request Type	Request Control
Status Code	Content-Type
Request Method	Content Code
Content-Encoding	

- A. Mastered
- B. Not Mastered

Answer: A

#### Explanation:

Graphical user interface, text, application Description automatically generated

#### NEW QUESTION 22

- (Exam Topic 2)

Where is an IP packet routed if the packet does not match any routes in the routing table?

- A. firewall
- B. load balancer
- C. central switch
- D. default gateway

Answer: D

#### NEW QUESTION 27

- (Exam Topic 2)

Refer to the exhibit.

Local File Attachments

To send local file attachments, simply post a message by including your access token in the Authorization header and the path to your local file with the files parameter. Optionally, you can also include a plain-text message with the attachment by using the text parameter. When uploading files directly from your local filesystem, your request will need to be a multipart/form-data request rather than JSON

```
curl --request POST \
  --form "files=@/home/desktop/example.png;type=image/png" \
  --form "roomId=Y21zY2....." \
  --form "text=example attached" \
  https://webexapis.com/v1/messages
```

A developer needs to upload a local file by using the REST API. The developer gathers information according to the documentation and sends the request by using the cURL command in the exhibit but gets an error code. Which action should be followed to get valid response?

- A. change content type as JSON



- B. add the authorization header with the access token
- C. add a username-password combination to request command
- D. change request method as GET

**Answer:** B

**Explanation:**

Reference: <https://developer.webex.com/docs/api/basics>

### NEW QUESTION 32

- (Exam Topic 2)

What is a requirement when authenticating a RESTCONF API session with a router that runs Cisco IOS XE Software?

- A. No authentication is required.
- B. OAuth must be used.
- C. Basic authentication must be used.
- D. A token must be retrieved and the associated string must be embedded in the X-Auth-Token header.

**Answer:** C

**Explanation:**

<https://www.cisco.com/c/en/us/td/docs/routers/csr1000/software/restapi/restapi/RESTAPIclient.html>

### NEW QUESTION 36

- (Exam Topic 2)

What is a difference between a synchronous API and an asynchronous API?

- A. An asynchronous API can make offline calls while synchronous APIs do not have this capability.
- B. Synchronous API calls are returned immediately while asynchronous calls do not guarantee an immediate response.
- C. Synchronous API calls require an authentication header to be sent while asynchronous calls do not require authentication.
- D. An asynchronous API can make a larger number of calls in a specified time period than a synchronous API.

**Answer:** B

**Explanation:**

Reference:

<https://stackoverflow.com/questions/36213948/what-is-the-difference-between-asynchronous-calls-and-callback>

### NEW QUESTION 37

- (Exam Topic 2)

What is used in JSON to represent a Python Tuple?

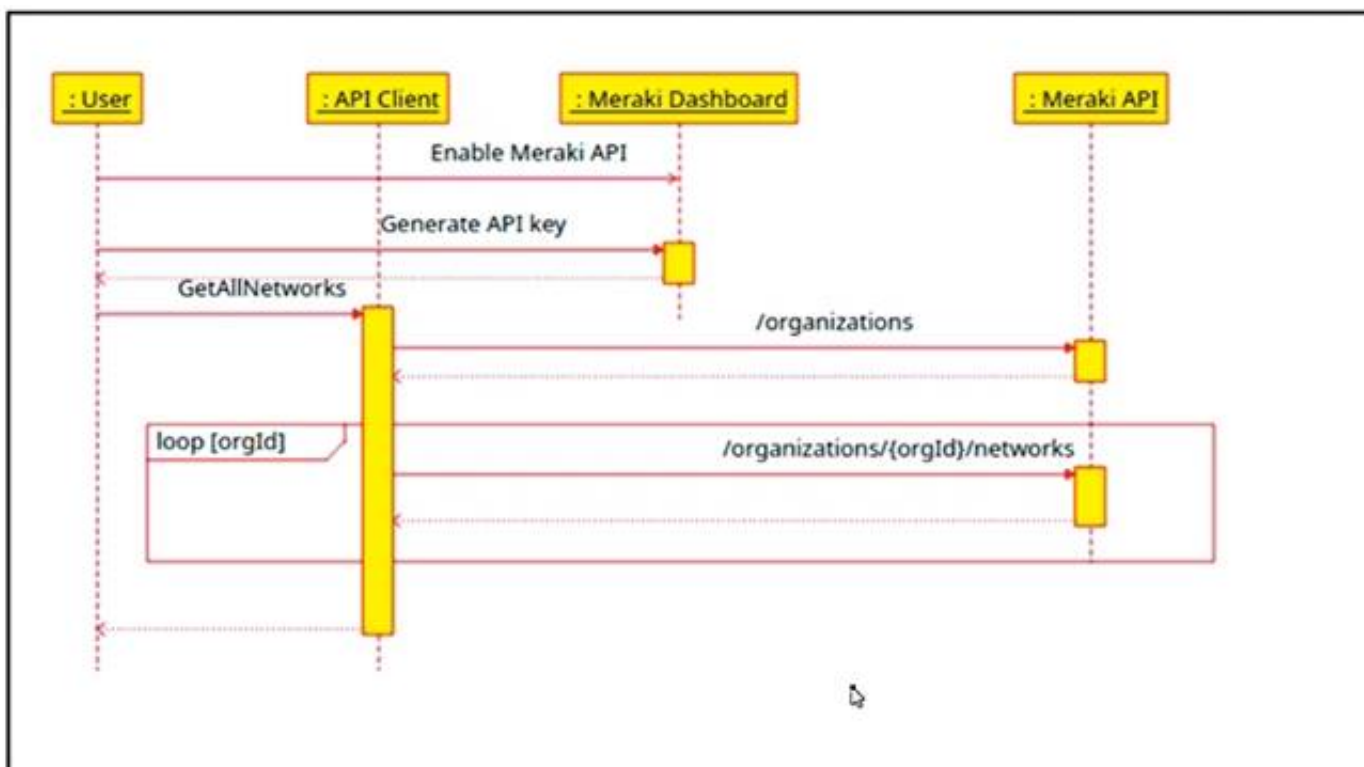
- A. Object
- B. Array
- C. Dict
- D. Collection

**Answer:** B

### NEW QUESTION 42

- (Exam Topic 2)

Refer to the exhibit.



The Cisco Meraki API manages two organizations. In each organization, two independent networks are defined. How many calls to the /organizations/{orgId}/networks endpoint will be run parallel by the GetAllNetwork function of the API client?

A. 1



- B. 2
- C. 4

Answer: C

#### NEW QUESTION 46

- (Exam Topic 2)

Refer to the exhibit.

```
>>> response_data = requests.get(base_url + request_url, cookies=cookies)
Traceback (most recent call last):
  File "<stdin>", line 1, in <module>
NameError: name 'requests' is not defined
>>>
```

A Python code has been written to query a device. The executed code results in the error shown. Which action resolves the problem?

- A. import json
- B. requests("GET", base\_url + request\_url, cookies=cookies)
- C. pip install requests
- D. import requests

Answer: D

#### NEW QUESTION 51

- (Exam Topic 2)

Which implementation creates a group of devices on one or more LANs that are configured to communicate as if they were attached to the same wire?

- A. WLAN
- B. VLAN
- C. IPsec
- D. HSRP

Answer: B

#### NEW QUESTION 54

- (Exam Topic 2)

```
1  import requests
2
3  headers = {"X-Cisco-Meraki-API-Key": "KEY1234"}
4  BASE_URL = "https://api-mp.meraki.com/api/v1"
5  FIRST_URL = "/organizations"
6  SECOND_URL = "/networks"
7  THIRD_URL = "clients"
8
9  def first_loop(info):
10     for item in info:
11         if item["name"] == "ACME":
12             URL = BASE_URL + FIRST_URL + "/" + item["id"] + "/" + SECOND_URL
13             response = requests.request("GET", URL, headers=headers)
14             return second_loop(response.json())
15
16  def second_loop(info):
17     for item in info:
18         if item["name"] == "BLDG21":
19             URL = BASE_URL + SECOND_URL + "/" + item["id"] + "/" + THIRD_URL
20             response = requests.request("GET", URL, headers=headers)
21             return third_loop(response.json())
22
23  def third_loop(info):
24     for item in info:
25         return item
26
27  response = requests.request("GET", BASE_URL + FIRST_URL, headers=headers)
28  info = first_loop(response.json())
29  for item in info:
30     print (item["id"])
```

Refer to the exhibit. A network engineer must collect information from the network. The engineer prepares a script to automate workflow by using Cisco Meraki API. The script must run over nested loops to collect organization and network information and uses the collected data for final collection. Which process is being automated by using the Python script?

- A. Gather the IDs of the ACME organization, the BLDG21 network, and the dents on the network
- B. Provide the BLDG21 network information if it is part of the ACME organization
- C. Collect the IDs of the clients on the BLDG21 network
- D. List the IDs from the ACME organization

Answer: A

#### NEW QUESTION 55

- (Exam Topic 2)

Which tool allows changes to the configuration management toolset to be tested?

- A. Cisco VIRL
- B. NAPALM
- C. Ansible
- D. pyATS

**Answer:** D

#### NEW QUESTION 57

- (Exam Topic 2)

What does a load balancer distribute in a network environment?

- A. outgoing connections to the network
- B. incoming traffic across multiple servers
- C. different TCP connections to the routers
- D. traffic in the network by leveraging the switch architecture

**Answer:** B

#### NEW QUESTION 58

- (Exam Topic 2)

What is a benefit of organizing into modules?

- A. improves collaboration of the development team
- B. makes it easier to deal with large and complex systems
- C. enables the code to be broken down into layers
- D. enables the inclusion of more programming languages in the code

**Answer:** B

#### Explanation:

From Wikipedia ([https://en.wikipedia.org/wiki/Modular\\_programming](https://en.wikipedia.org/wiki/Modular_programming)) "Modular programming is closely related to structured programming and object-oriented programming, all having the same goal of facilitating the construction of large software programs and systems by decomposition into smaller pieces."

#### NEW QUESTION 61

- (Exam Topic 2)

Refer to the exhibit.

```
diff --git a/ciscoaxl/axl.py b/ciscoaxl/axl.py
index bc7727e..d66ef4d 100644
--- a/ciscoaxl/axl.py
+++ b/ciscoaxl/axl.py
@@ -99,7 +99,7 @@ class axl(object):
     :return: result dictionary
     """
     try:
-        return self.client.executeSQLUpdate(query)
+        return self.client.executeSQLUpdate(query) ['return']
     except Fault as e:
         return e

diff --git a/setup.py b/setup.py
index df79ef4..1470b05 100644
--- a/setup.py
+++ b/setup.py
@@ -5,7 +5,7 @@ with open("README.md", "r") as fh:

    setup(
        name="ciscoaxl",
-        version="0.14",
+        version="0.141",
        author="User 1",
        author_email="user1@example.com",
        description="Cisco CUCM AXL Library. Simple to use.",
```

Which two files are being edited in the unified diff? (Choose two.)

- A. README.md
- B. setup.py

- C. axl.py
- D. ciscoaxl.py
- E. index.py

**Answer:** BC

#### NEW QUESTION 66

- (Exam Topic 2)

A file that already exists in a local repository is updated. Which command must be executed to ensure that the changes in the file are included in the next Git commit?

- A. git update
- B. git merge
- C. git add
- D. git rebase

**Answer:** A

#### NEW QUESTION 67

- (Exam Topic 1)

What should a CI/CD pipeline aim to achieve?

- A. to allow manual testing before deployment
- B. to require minimal manual interaction
- C. to support new deployments on a fixed monthly schedule
- D. to provide a documented process for feedback

**Answer:** A

#### NEW QUESTION 69

- (Exam Topic 1)

Fill in the blanks to complete the statement.

Given a username of “devnet” And a password “Cisco123”, applications must create a base64 encoding of the string “\_\_\_\_\_” when sanding HTTP requests to an API that uses \_\_\_\_\_ authentication.

Given a username of "devnet" and a password of "cisco123", applications must create a base64 encoding of the string "\_\_\_\_\_ " when sending HTTP requests to an API that uses \_\_\_\_\_ authentication.

- A. Mastered
- B. Not Mastered

**Answer:** A

**Explanation:**

Solution as below

Given a username of "devnet" and a password of "cisco123", applications must create a base64 encoding of the string "devnet:cisco123 " when sending HTTP requests to an API that uses Basic \_\_\_\_\_ authentication.

#### NEW QUESTION 73

- (Exam Topic 1)

What are two advantages of version control software? (Choose two.)

- A. It supports tracking and comparison of changes in binary formate files.
- B. It allows old versions of packaged applications to be hosted on the Internet
- C. It provides wiki collaboration software for documentation.
- D. It supports comparisons between revisions of source code files.
- E. It allows new team members to access the current code and history.

**Answer:** DE

#### NEW QUESTION 76

- (Exam Topic 1)

Which API is used to obtain data voicemail ports?

- A. Finesse gadgets
- B. Cisco Unified Communications manager
- C. Webex devices
- D. Webex teams

**Answer:** B

**Explanation:**

Cisco Unified Communications Manager (CUCM) provides API access to data management, call management, and voicemail integration. Source: Cisco DevNet Fundamental Course: <https://developer.cisco.com/certification/fundamentals/>

#### NEW QUESTION 80

- (Exam Topic 1)

What is a function of the default gateway in a network?

- A. to drop traffic that is destined to the default gateway
- B. to drop traffic that is not destined to the default gateway
- C. to forward traffic to the same subnet
- D. to forward traffic to different subnets

**Answer: D**

#### NEW QUESTION 84

- (Exam Topic 1)

Which device is a system that monitors and controls incoming and outgoing network traffic based on predetermined security rules?

- A. Switch
- B. Router
- C. Firewall
- D. Load balancer

**Answer: C**

#### NEW QUESTION 86

- (Exam Topic 1)

Refer to the exhibit.

```
1  ---
2  - hosts: [{ router }]
3    gather_facts: true
4    connection: local
5
6  tasks:
7    - ios_command
8      commands:
9        - show run
10       provider: "{{ router_credentials }}"
11       register: config
12
13   - copy:
14     content: "{{ config.stdout[0] }}"
15     dest: "etc/ansible/configs/command_{{ router_hostname }}.txt
16   ...
```

What is the effect of this Ansible playbook on an IOS router?

- A. A new running configuration is pushed to the IOS router.
- B. The current running configuration of the IOS router is backed up.
- C. The start-up configuration of the IOS router is copied to a local folder.
- D. A new start-up configuration is copied to the IOS router.

**Answer: B**

#### NEW QUESTION 91

- (Exam Topic 1)

Refer to the exhibit.



```

module ex-ethernet {
  namespace "http://example.com/Ethernet";
  prefix "eth";
  import ietf-interfaces {
    prefix if;
  }
  augment "/if:interfaces/if:interface" {
    when "if:type = 'ethernetCsmacd'";
    container ethernet {
      must "../if:location" {
        description
          "An Ethernet interface must specify the physical location of the ethernet hardware.";
      }
      choice transmission-params {
        case auto {
          leaf auto-negotiate {
            type empty;
          }
        }
        case manual {
          leaf duplex {
            type enumeration {
              enum "half";
              enum "full";
            }
          }
          leaf speed {
            type enumeration {
              enum "10Mb";
              enum "100Mb";
              enum "1Gb";
              enum "10Gb";
            }
          }
        }
      }
    }
  }
} // other ethernet specific params...
}

```

What is represented in this YANG module?

- A. interface management
- B. topology
- C. BGP
- D. OpenFlow

**Answer:** A

#### NEW QUESTION 95

- (Exam Topic 1)

In which situation would an edge computing solution be used?

- A. where low latency is needed
- B. where high CPU throughput is needed
- C. where fast memory is needed
- D. where high disk space is needed

**Answer:** A

#### NEW QUESTION 100

- (Exam Topic 1)

Drag and drop the element of the Finesse API on the left onto the description of its functionality on the right.

User	Represents a skill group in Unified CCE.
Dialog	Represents the current state of the system.
Media	Represents an agent, supervisor or administrator.
Queue	Represents a group of users.
Team	Represents a call and the participants if the media type is voice.
SystemInfo	Sends client-side logging to the Finesse Server.
ClientLogs	Represents a user’s state in a non-voice Media Routing Domain.

- A. Mastered  
B. Not Mastered

Answer: A

Explanation:  
1 – D, 2 – F, 3 – A, 4 – E, 5 – B, 6 – G, 7 - C

NEW QUESTION 102

- (Exam Topic 1)  
Refer to Exhibit.

```
<books>
  <science>
    <biology>10.00</biology>
    <geology>9.00</geology>
    <chemistry>8.00</chemistry>
  </science>
  <math>
    <calculus>20.00</calculus>
    <algebra>12.00</algebra>
  </math>
</books>
```

Which JSON is equivalent to the XML-encoded data.

```
A)
{
  "books": {
    "science": {
      "biology": "10.00",
      "geology": "9.00",
      "chemistry": "8.00"
    },
    "math": {
      "calculus": "20.00",
      "algebra": "12.00"
    }
  }
}
```

B)

```
[ {
  "books": {
    "science": {
      "biology": "10.00",
      "geology": "9.00",
      "chemistry": "8.00"
    },
    "math": {
      "calculus": "20.00",
      "algebra": "12.00"
    }
  }
} ]
```

C)

```
{
  "books": [
    "science", {
      "biology": "10.00",
      "geology": "9.00",
      "chemistry": "8.00"
    },
    "math", {
      "calculus": "20.00",
      "algebra": "12.00"
    }
  ]
}
```

D)

```
{
  "books": [
    "science": {
      "biology": "10.00",
      "geology": "9.00",
      "chemistry": "8.00"
    },
    "math": {
      "calculus": "20.00",
      "algebra": "12.00"
    }
  ]
}
```

- A. Option A
- B. Option B
- C. Option C
- D. Option D

**Answer:** A

#### NEW QUESTION 106

- (Exam Topic 1)

Which response status code is used by a RESTful interface to indicate successful execution of a request?

- A. 200
- B. 404
- C. 405
- D. 500

**Answer:** A

#### NEW QUESTION 110

- (Exam Topic 1)

Users cannot access a webserver and after the traffic is captured, the capture too\* shows an ICMP packet that reports "communication administratively prohibited"  
 What Is the cause of this webserver access Issue?

- A. An access list along the path is blocking the traffic
- B. The traffic is not allowed to be translated with NAT and dropped.
- C. Users must authenticate on the webserver to access It
- D. A router along the path is overloaded and thus dropping traffic

**Answer:** A

#### NEW QUESTION 114

- (Exam Topic 1)

Drag and Drop the GIT commands from the left onto the right that add modified local files to a remote repository. Not all options are used

git push	Git command one
git add .	Git command two
git checkout -b "new branch"	Git command three
git commit -m "this is my edit"	
git pull	

- A. Mastered
- B. Not Mastered

**Answer:** A

#### Explanation:

git add .  
 git commit -m "this is my edit" git push

#### NEW QUESTION 117

- (Exam Topic 1)

Which principle is a value from the manifesto for Agile software development?

- A. adhering to a plan over responding to requirements
- B. detailed documentation over working software
- C. processes and tools over teams and inter actions
- D. customer collaboration over contract negotiation

**Answer:** D

#### Explanation:

Reference: [https://www.cisco.com/c/dam/global/en\\_hk/solutions/collaboration/files/agile\\_product\\_development.pdf](https://www.cisco.com/c/dam/global/en_hk/solutions/collaboration/files/agile_product_development.pdf)

#### NEW QUESTION 118

- (Exam Topic 1)

Refer to the exhibit.

```
#!/bin/bash
read ndir
while [ -d "$ndir" ]
do
cd $ndir
done
mkdir $ndir
```

What is the action of the Bash script that is shown?

- A. The script waits until input is entered
- B. If the directory exists, the script goes into it until there is no directory with the same name, then it creates a new directory.
- C. The script goes into the directory called "\$ndir" and makes a new directory called "\$ndir"
- D. The script waits until input is entered, then it goes into the directory entered and creates a new directory with the same name.
- E. For all directories in the current folder
- F. The script goes into directory and makes a new directory.

**Answer:** A



#### NEW QUESTION 123

- (Exam Topic 1)

Which type of HTTP method is used by the Meraki nad webex teams APIs to send webhook notifications?

- A. HTTP GET
- B. HTTP PUT
- C. HTTP HEAD
- D. HTTP POST

**Answer:** D

#### Explanation:

Reference: <https://meraki.cisco.com/blog/tag/alerts/>

#### NEW QUESTION 128

- (Exam Topic 1)

Which device is used to transport traffic from one broadcast domain to another broadcast domain?

- A. load balancer
- B. layer 2 switch
- C. router
- D. proxy server

**Answer:** C

#### NEW QUESTION 133

- (Exam Topic 1)

Which two statement describe the role of an artifact repository in a CI/CD pipeline? (Choose two.)

- A. An artifact repository allows to compare and merge changes in the source code of files involved in a build process.
- B. An artifact repository is needed only for CI/CD pipeline executed on a public cloud infrastructure.
- C. An artifact repository provides traceability, search, and management of binary files.
- D. An artifact repository is needed only for managing open source software.
- E. An artifact repository stores files needed and generated during the build process.

**Answer:** CE

#### NEW QUESTION 138

- (Exam Topic 1)

The project is migrated to a new codebase, the “old\_project” directory must be deleted. The directory has multiple read-only files, and it must be deleted recursively without prompting for confirmation. Which bash command must be used?

- A. `rm -rf old_project`
- B. `rm -r old_project`
- C. `rmdir -p old_project`
- D. `rmdir old_project`

**Answer:** A

#### NEW QUESTION 142

- (Exam Topic 1)

In DNS, which record specifies an alias that refers to another name that ultimately resolves to an IP address?

- A. AAA
- B. SOA
- C. NS
- D. CNAME

**Answer:** D

#### Explanation:

Reference: <https://ns1.com/resources/dns-types-records-servers-and-queries>

#### NEW QUESTION 146

- (Exam Topic 1)

What is a tenet of test-driven development?

- A. write documentation for tests
- B. write tests after adding new blocks of code
- C. write and run tests before writing new code
- D. run tests after writing new code

**Answer:** C

#### NEW QUESTION 151

- (Exam Topic 1)

Which Cisco DevNet resource allows access to products in a development lab to explore, learn, and build application that use Cisco APLs?

- A. DevNet communities
- B. DevNet code Exchange
- C. DevNet Automation Exchange
- D. DevNet sandbox

**Answer:** D

**Explanation:**

Reference: <https://developer.cisco.com/site/sandbox/>

#### NEW QUESTION 155

- (Exam Topic 1)

When a Cisco IOS XE networking device is configured using RESTCONF, what is the default data-encoding method?

- A. XML
- B. x-form-encoding
- C. YANG
- D. YAML

**Answer:** A

#### NEW QUESTION 158

- (Exam Topic 1)

Which two statements describe the advantages of using a version control system? (Choose two.)

- A. It allows for branching and merging so that different tasks are worked on in isolation before they are merged into a feature or master branch.
- B. It allows multiple engineers to work against the same code and configuration files and manage differences and conflicts.
- C. It provides tooling to automate application builds and infrastructure provisioning.
- D. It allows developers to write effective unit tests.
- E. It provides a system to track User Stories and allocate to backlogs.

**Answer:** AB

#### NEW QUESTION 163

- (Exam Topic 1)

What is the purpose of a firewall in application deployment?

- A. adds TLS support to an application that does not support it natively
- B. forwards traffic to a pool of instances of the application
- C. provides translation for an application's hostname to its IP address
- D. limits traffic to only ports required by the application

**Answer:** D

#### NEW QUESTION 167

- (Exam Topic 1)

Drag and drop the Python code from the left onto the correct step on the right to call a REST API.

<pre>response = requests.post(url, data=json.dumps(payload), \ headers=header, verify=False)</pre>	Step 1 – Import the correct libraries.
<pre>ticket = r_json["Token"] print (ticket)</pre>	Step 2 – Declare the necessary variable.
<pre>(_json = response.json() print(r_json)</pre>	Step 3 – Send the HTTP Request.
<pre>import requests import json</pre>	Step 4 – Format and display the response in JSON readable format.
<pre>controller = 'devnetapi.cisco.com/sandbox/dnacenter' url = 'https://' + controller + '/dna/system/api/v1/auth/token' payload = { 'username': 'devnetuser', 'password': 'pa55word' } header = { 'Content-type': 'application/json' }</pre>	Step 5 – Parse the response to display the Service Ticket.

A. Mastered

B. Not Mastered

Answer: A

Explanation:

<pre>response = requests.post(url, data=json.dumps(payload), \ headers=header, verify=False)</pre>	<pre>import requests import json</pre>
<pre>ticket = r_json["Token"] print (ticket)</pre>	<pre>controller = 'devnetapi.cisco.com/sandbox/dnacenter' url = 'https://' + controller + '/dna/system/api/v1/auth/token' payload = { 'username': 'devnetuser', 'password': 'pa55word' } header = { 'Content-type': 'application/json' }</pre>
<pre>_json = response.json() print(r_json)</pre>	<pre>response = requests.post(url, data=json.dumps(payload), \ headers=header, verify=False)</pre>
<pre>import requests import json</pre>	<pre>_json = response.json() print(r_json)</pre>
<pre>controller = 'devnetapi.cisco.com/sandbox/dnacenter' url = 'https://' + controller + '/dna/system/api/v1/auth/token' payload = { 'username': 'devnetuser', 'password': 'pa55word' } header = { 'Content-type': 'application/json' }</pre>	<pre>ticket = r_json["Token"] print (ticket)</pre>

NEW QUESTION 171

- (Exam Topic 1)

Fill in the blanks to complete the cURL command that invokes a RESTful API to retrieve a resource in JSON format using OAuth.

```
curl -X [ ] -H "[ ]: application/json" \
-H "[ ]: Bearer AbCdEf123456" https://localhost/api/myresource
```

- A. Mastered
- B. Not Mastered

Answer: A

Explanation:

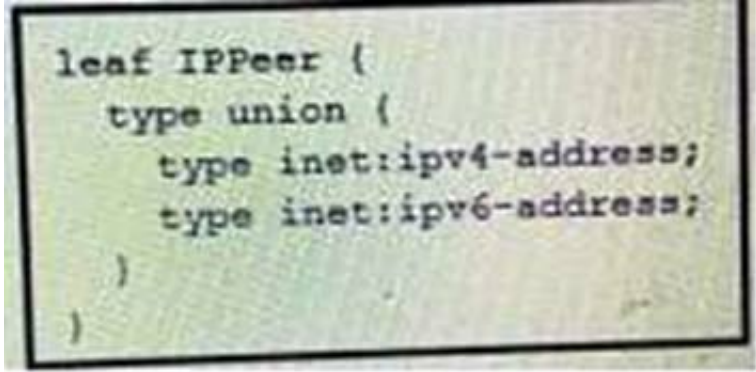
```
curl -X GET [ ] -H "[ ]: application/json" \
-H "[ ]: Bearer AbCdEf123456" https://localhost/api/myresource
```

Reference: <https://webcache.googleusercontent.com/search?q=cache:Se6d2trvMsEJ:https://blogs.cisco.com/developer/secu>

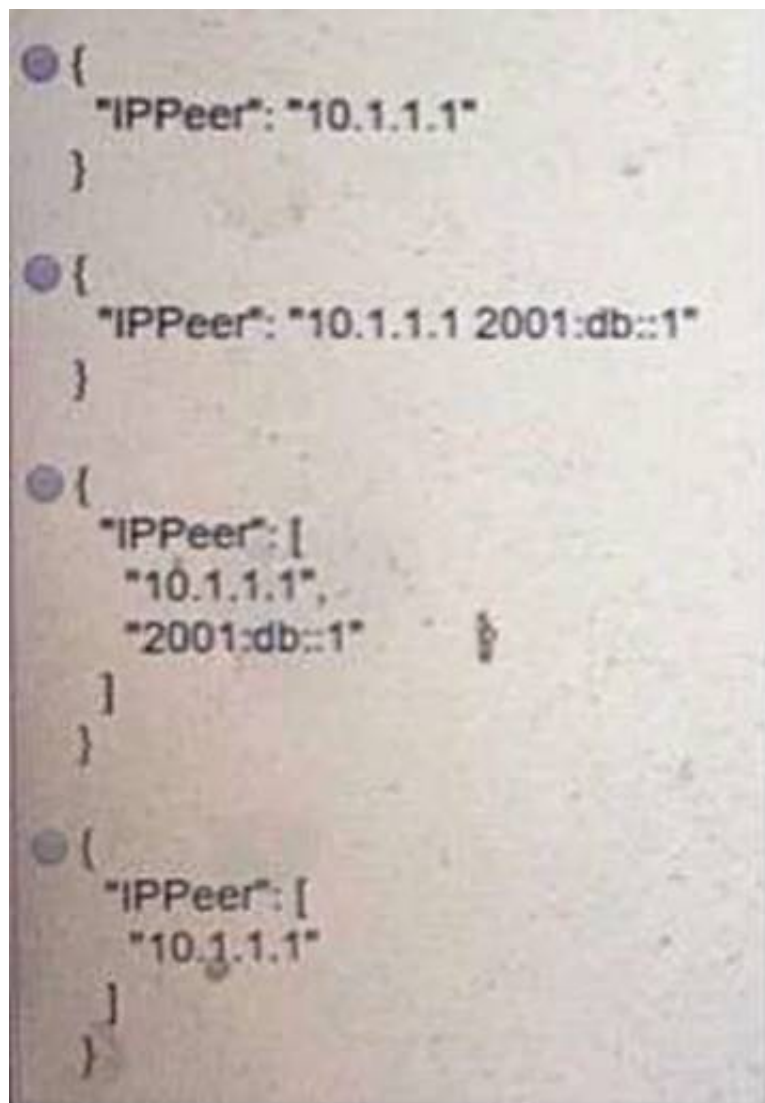
NEW QUESTION 175

- (Exam Topic 1)

Refer to the exhibit.



What is the value of the node defined by this YANG structure?



- A. Option A
- B. Option B
- C. Option C
- D. Option D

**Answer:** D

**Explanation:**

<https://tools.ietf.org/html/rfc7950#section-9.12>

**NEW QUESTION 177**

- (Exam Topic 1)

Which REST architectural constraint indicates that no client context should be stored on the server between requests?

- A. stateless
- B. uniform interface
- C. cacheable
- D. client-server

**Answer:** A

**Explanation:**

Reference: <https://developer.cisco.com/docs/nx-os/#!representational-state-transfer-rest>

**NEW QUESTION 179**

- (Exam Topic 1)

Which line is an example of the start of a chunk from a unified diff?

- A. @@ -90,88 +20191008T1349@@
- B. @@ -20191007T1200 +88,90 @@
- C. @@ -20191007T1200 +20191008T1349@@
- D. @@ -88,10 +88,6 @@

**Answer:** D

**Explanation:**

Reference:

<https://unix.stackexchange.com/questions/252927/what-do-the-numbers-in-the-line-mean-in-output-of-diff>

**NEW QUESTION 183**

- (Exam Topic 1)

Users cannot access a webserver and after the traffic is captured. the capture tool shows an ICMP packet that reports "time exceeded in-transit". What is the cause of this webserver access issue?

- A. A router along the path is misrouting the packets in a wrong direction.
- B. A router along the path has the wrong time.



- C. The server is too far away and the packets require too much time to reach it
- D. The server is too loaded and the connection could not be handled in time

**Answer:** A

#### NEW QUESTION 184

- (Exam Topic 3)

When a Cisco IOS XE networking device is configured by using RESTCONF, what is the default data encoding method?

- A. application/yaml-data+json
- B. application/yang-data+json
- C. application/xml-data+json
- D. application/json-data+xml

**Answer:** D

#### NEW QUESTION 187

- (Exam Topic 3)

What is a characteristic of RPC APIs compared to REST APIs?

- A. Authentication is done over provisions for the service caller and vice versa for RPC API, and REST API uses HTTP headers for authentication.
- B. All communications between the client and server must be stateless for RPC API, and REST API is stateful.
- C. The architecture model for RPC API is resource-focused, and REST API is procedure-focused.
- D. The data payload must be in JSON format for RPC API, and REST API allows JSON and XML formats.

**Answer:** A

#### NEW QUESTION 188

- (Exam Topic 3)

```
user@host1:~/tmp$ cat Dockerfile
# Dockerfile to install traceroute
FROM ubuntu
MAINTAINER User One (userone@cisco.com)
RUN apt-get update && apt-get install traceroute
```

Refer to the exhibit. Drag and drop the Dockerfile contents from the left onto the functions on the right that create a container image to run traceroute to track network path to specific targets. Not all options are used.

document author

FROM ubuntu

command to execute

MAINTAINER User One (userone@cisco.com)

initializes a new build stage

RUN apt-get update && apt-get install traceroute

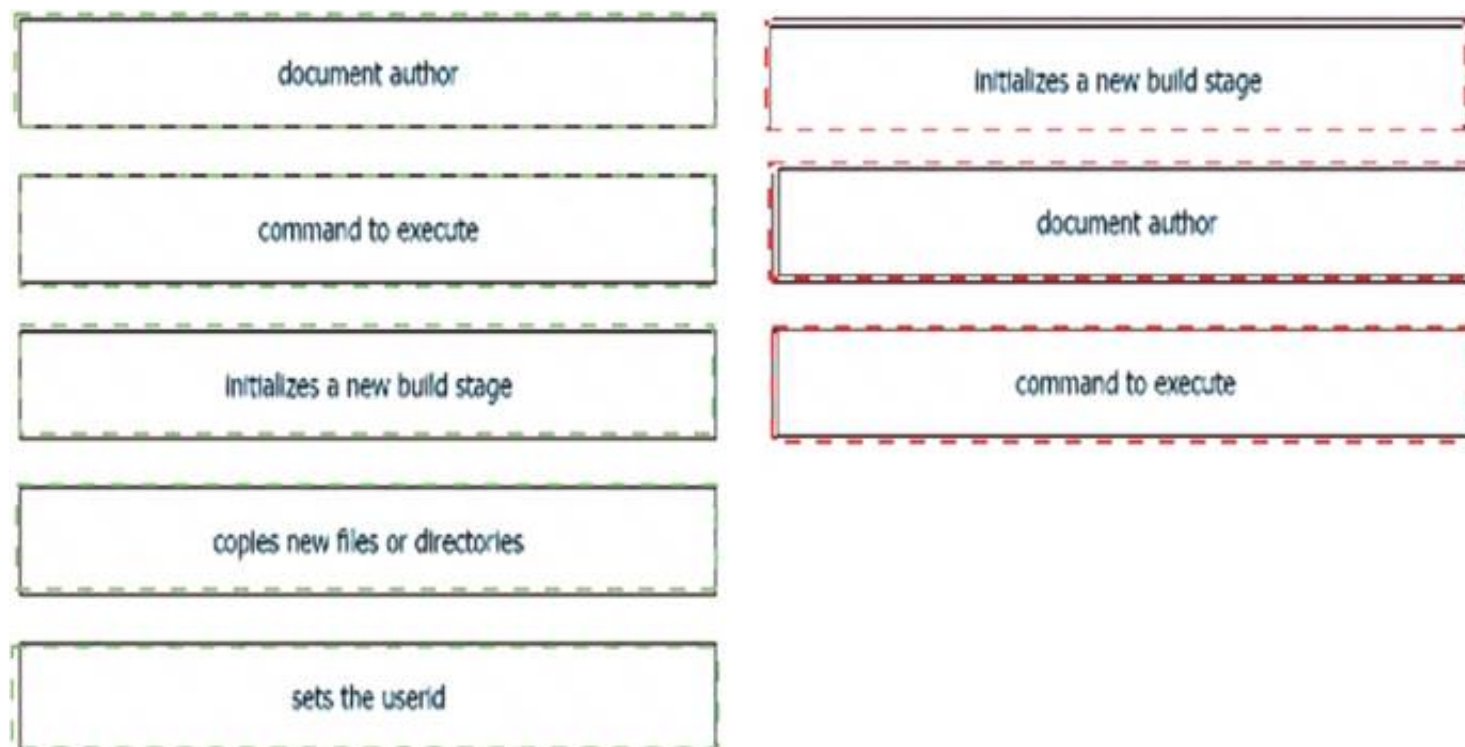
copies new files or directories

sets the userid

- A. Mastered
- B. Not Mastered

**Answer:** A

**Explanation:**



#### NEW QUESTION 193

- (Exam Topic 3)

Refer to the exhibit.

```

1  import requests
2
3  url = "https://api.meraki.com/api/v0/organizations/{{organizationId}}/insight/
*  monitoredMediaServers"
4
5  payload = {
6      "name": "Sample VoIP Provider",
7      "address": "123.123.123.1"
8  }
9  headers = {
10     'Accept': '*/*',
11     'Content-Type': 'application/json'
12 }
13
14 response = requests.request("POST", url, headers=headers, data=payload)
15
16 print(response.text.encode('utf8'))

```

Which workflow does the script automate?

- A. retrieves a media server that is being monitored
- B. updates a media server that is being monitored
- C. adds a media server to be monitored
- D. deletes a media server that is being monitored

**Answer: C**

#### NEW QUESTION 195

- (Exam Topic 3)

Which technology is responsible for resolving a host name to an IP address?

- A. DNS
- B. SNMP
- C. DHCP
- D. NTP

**Answer: A**

#### NEW QUESTION 196

- (Exam Topic 3)

During which step of the CI/CD pipeline for infrastructure automation is code from multiple developers combined to compile and test different components?

- A. integration
- B. deployment
- C. development
- D. testing

**Answer: A**

#### NEW QUESTION 198

- (Exam Topic 3)

Which command reverses the last commit without changing the index file or the working tree position?

- A. git revert HEAD
- B. git reset --hard HEAD~3
- C. git reset --soft HEAD^
- D. git revert

**Answer:** C

#### NEW QUESTION 201

- (Exam Topic 3)

A developer creates a program in which an object maintains a list of classes based on the observer pattern. The classes are dependent on the object. Whenever the state of the object changes, it notifies the dependent classes directly through callbacks. Which advantage of the observer pattern offers minimum dependencies and maximum flexibility between dependent objects or classes?

- A. tight coupling
- B. cohesion
- C. mediation
- D. loose coupling

**Answer:** D

#### NEW QUESTION 203

- (Exam Topic 3)

Which OWASP threat takes advantage of a web application that the user has already authenticated to execute an attack?

- A. phishing
- B. DoS
- C. brute force attack
- D. CSRF

**Answer:** D

#### Explanation:

Cross-Site Request Forgery (CSRF) is an attack that forces an end user to execute unwanted actions on a web application in which they're currently authenticated.

<https://owasp.org/www-community/attacks/csrf>

#### NEW QUESTION 204

- (Exam Topic 3)

##### SDK Documentation:

##### OrganizationController:

```
get_organizations()  
get_network_device(dict)
```

##### DevicesController:

```
get_network_devices(id)
```

##### NetworksController:

```
get_organization_networks(dict)
```

Refer to the exhibit. A script must output details of all the Cisco Meraki MS220-BP switches across all organizations and networks. Drag and drop the code snippets from the bottom onto the boxes in the code to complete the script. Not all options are used.

```
from meraki_sdk.meraki_sdk_client import MerakiSdkClient
from meraki_sdk.exceptions.api_exception import APIException

api_key = "API_KEY"
client = MerakiSdkClient(api_key)

for org in [redacted]:
    try:
        options = {"organization id": org["id"]}
        networks = [redacted]
        for network in networks:
            devices = [redacted]
            for device in devices:
                if device["model"] == "MS220-8P":
                    options = {"network id": network["id"], "serial": device["serial"]}
                    output = [redacted]
                    print(output)
            except APIException as e:
                pass
```

client.organizations.get\_organizations():

client.networks.get\_organization\_networks(api\_key)

client.networks.get\_organization\_networks(options)

client.devices.get\_network\_devices(network ["id"])

client.devices.get\_network\_device(options=options)

client\_devices.get\_network\_device(device ["model"])

- A. Mastered  
 B. Not Mastered

Answer: A

Explanation:

```
from meraki_sdk.meraki_sdk_client import MerakiSdkClient
from meraki_sdk.exceptions.api_exception import APIException

api_key = "API_KEY"
client = MerakiSdkClient(api_key)

for org in [redacted]:
    try:
        options = {"organization id": org["id"]}
        networks = [redacted]
        for network in networks:
            devices = [redacted]
            for device in devices:
                if device["model"] == "MS220-8P":
                    options = {"network id": network["id"], "serial": device["serial"]}
                    output = [redacted]
                    print(output)
            except APIException as e:
                pass
```

client.organizations.get\_organizations():

client.networks.get\_organization\_networks(api\_key)

client.networks.get\_organization\_networks(options)

client.devices.get\_network\_devices(network ["id"])

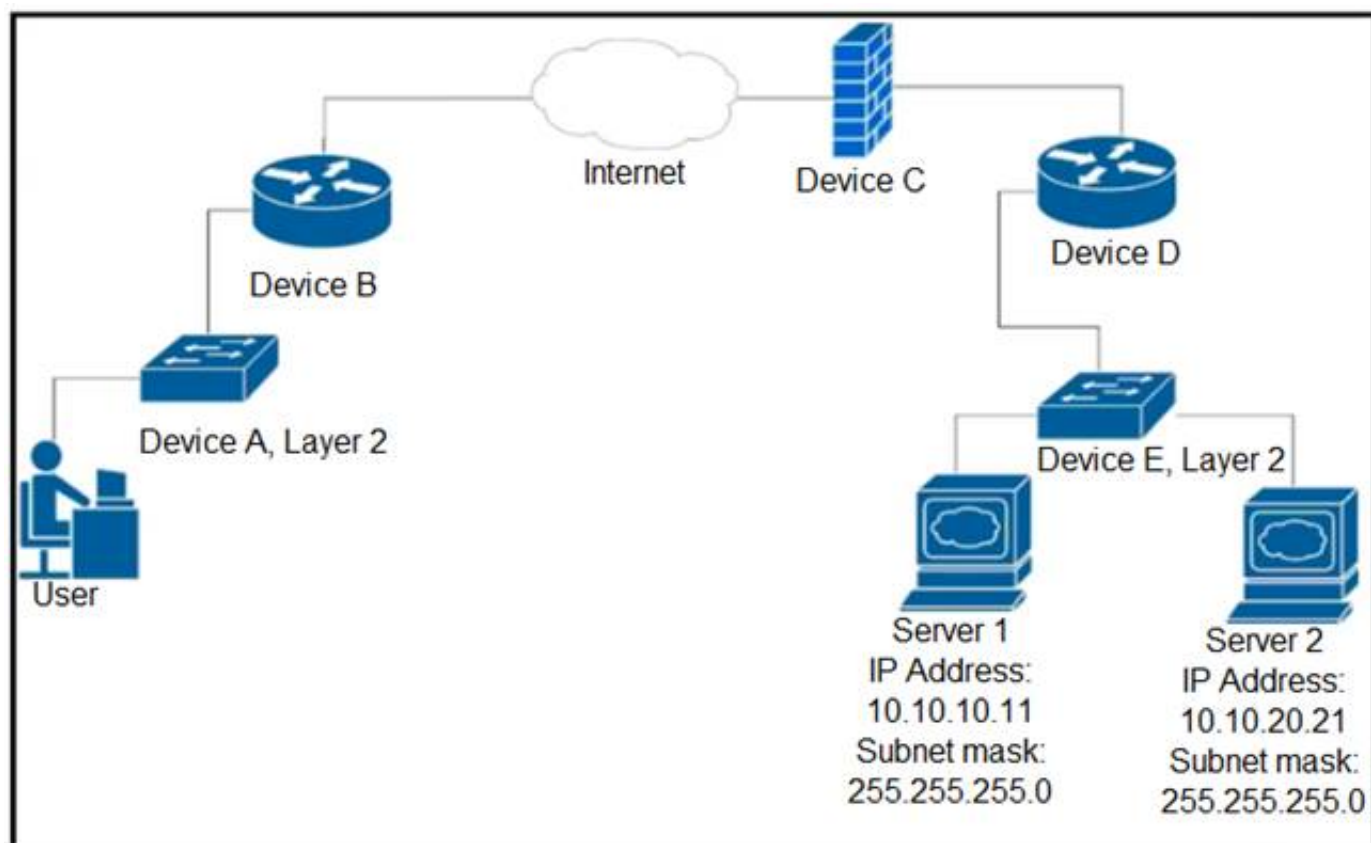
client.devices.get\_network\_device(options=options)

client\_devices.get\_network\_device(device ["model"])

#### NEW QUESTION 208

- (Exam Topic 3)  
 Refer to the exhibit.





Up to which device does the communication server 1 and server 2 go?

- A. device B
- B. device C
- C. device D
- D. device E

**Answer: C**

#### NEW QUESTION 209

- (Exam Topic 3)

A development team is creating an application used for contactless payments. The application must: Be web-based Capture and process the credit card information for a purchase.

Which security action must the web application use to gather and process the private customer data?

- A. Enable RATs to monitor the web application remotely.
- B. Disable botnets to eliminate risks.
- C. Disable TLS to increase the connection speed.
- D. Enable the encryption of network traffic.

**Answer: D**

#### NEW QUESTION 212

- (Exam Topic 3)

Which port does HTTPS use by default?

- A. 433
- B. 443
- C. 803
- D. 883

**Answer: B**

#### NEW QUESTION 217

- (Exam Topic 3)

Refer to the exhibit.

```
module ietf-interface {
  namespace "urn:ietf:params:xml:ns:yang:ietf-interfaces";
  prefix if;
  import ietf-yang-types {
    prefix yang;
  }
  container interfaces-state {
    list interface {
      key "name";
      leaf name {
        type string;
      }
      leaf admin-status {
        type enumeration {
          enum up {
            value 1;
          }
          enum down {
            value 2;
          }
          enum testing {
            value 3;
          }
        }
      }
      leaf if-index {
        type int32 {
          range "1..2147483647"
        }
      }
      container statistics {
        leaf in-octets {
          type yang:counter64;
        }
        leaf in-unicast-pkts {
          type yang:counter64;
        }
      }
    }
  }
}
```

Which XML snippet has interface information that conforms to the YANG model?

A. Text Description automatically generatedB.

```
<interfaces-state
xmlns="urn:ietf:params:xml:ns:yang:ietf-interfaces"
xmlns:if="urn:ietf:params:xml:ns:yang:ietf-interfaces">
  <interface name="GigabitEthernet1">
    <admin-status>1</admin-status>
    <if-index>1</if-index>
    <statistics>
      <in-octets>408164820</in-octets>
      <in-unicast-pkts>728061</in-unicast-pkts>
    </statistics>
  </interface>
</interfaces-state>
```

Text

Description automatically generated

```
<interfaces-state
xmlns="urn:ietf:params:xml:ns:yang:ietf-interfaces"
xmlns:if="urn:ietf:params:xml:ns:yang:ietf-interfaces">
  <interface>
    <name>GigabitEthernet1</name>
    <admin-status>up</admin-status>
    <if-index>1</if-index>
    <in-octets>408164820</in-octets>
    <in-unicast-pkts>728061</in-unicast-pkts>
  </interface>
</interfaces-state>
```

B. Text Description automatically generated

```
<interfaces-state
xmlns="urn:ietf:params:xml:ns:yang:ietf-interfaces"
xmlns:if="urn:ietf:params:xml:ns:yang:ietf-interfaces">
  <interface>
    <name>GigabitEthernet1</name>
    <admin-status>up</admin-status>
    <if-index>1</if-index>
    <statistics>
      <in-octets>408164820</in-octets>
      <in-unicast-pkts>728061</in-unicast-pkts>
    </statistics>
  </interface>
</interfaces-state>
```

C. Text Description automatically generated

```
<interfaces-state
xmlns="urn:ietf:params:xml:ns:yang:ietf-interfaces"
xmlns:if="urn:ietf:params:xml:ns:yang:ietf-interfaces">
  <interface>
    <name>GigabitEthernet1</name>
    <admin-status>1</admin-status>
    <if-index>1</if-index>
    <statistics>
      <in-octets>408164820</in-octets>
      <in-unicast-pkts>728061</in-unicast-pkts>
    </statistics>
  </interface>
</interfaces-state>
```

Answer: C

**Explanation:**

<https://datatracker.ietf.org/doc/id/draft-ietf-netmod-interfaces-cfg-01.txt> <admin-status>up</admin-status>

**NEW QUESTION 219**

- (Exam Topic 3)

What are two benefits of using classes over functions when writing applications? (Choose two.)

- A. improved readability
- B. increased compatibility
- C. variable reusability
- D. increased performance
- E. code organization

Answer: AC

**NEW QUESTION 222**

- (Exam Topic 3)

```
api_endpoint = f"https://veryusefulapi/v2/authenticate"

headers = {
    "Authorization": "Basic YWRtaW46c3VwZXJzZWNyZXQ="
    "Accept": "application/json"
}

req = requests.get(api_endpoint, headers=headers)
```

Refer to the exhibit. A developer is part of a team that is working on an open-source project in which source code is hosted in a public GitHub repository. While the application was built, security concerns were addressed by encrypting the credentials on the server. After a few months, the developer realized that a hacker managed to gain access to the account. The exhibit contains part of the source code for the login process. Why was the attacker able to access the developer's account?

- A. The encoded credentials were available in the source code.
- B. The application was not encrypting the communication with the server.
- C. The credentials were encrypted in the source code.
- D. An SSL certificate was used instead of the TLS protocol to authenticate.



Answer: A

#### NEW QUESTION 227

- (Exam Topic 2)

Which Cisco product provides malware and content filtering through DNS?

- A. Cisco ASA Firepower module
- B. Cisco AMP
- C. Cisco ISE
- D. Cisco Umbrella

Answer: D

#### NEW QUESTION 229

- (Exam Topic 2)

What is a benefit of using functions in the code for the development process?

- A. better user experience in the end product
- B. improves code performance
- C. easier to compile the code
- D. fester code development

Answer: D

#### Explanation:

<https://www.techwalla.com/articles/the-advantages-disadvantages-of-using-functions-procedures-in-computer-p>

#### NEW QUESTION 234

- (Exam Topic 2)

Drag and drop the code snippets from the bottom to the blanks in the code to test the API response through the Python unittest library. Not all options are used.

```
import unittest
import json
from apidogs import app

class TestsAPIDogs(unittest.TestCase):

    def setUp(self):
        self.app = app.test_client()

    # Check status response of API
    def test_status(self):
        resp =self.app.get('/dogs/all')
        status_code = response.
        self.assertEqual(status_code, )

    # Check for content type is in application/json
    def test_content_type(self):
        resp =self.app.get('/dogs/all')
        self.assertEqual(resp. , 'application/json')

    def test_item_not_exist(self):
        resp =self.app.get('/dogs?id= ')
        self.assertEqual(response.status code,404)
```

none	content	
status_code	200	content_type
403	status	

- A. Mastered
- B. Not Mastered

Answer: A

#### Explanation:

Graphical user interface, text Description automatically generated

#### NEW QUESTION 236

- (Exam Topic 2)

What is a capability of an agentless configuration management system?

- A. It requires managed hosts to have an interpreter for a high-level language such as Python or Ruby.



- B. It requires managed hosts to connect to a centralized host to receive updated configurations.
- C. It uses compiled languages as the basis of the domain-specific language to interface with managed hosts.
- D. It uses existing protocols to interface with the managed host.

**Answer:** D

#### NEW QUESTION 239

- (Exam Topic 3)

Developer is working on a new feature and made changes on a branch named 'branch-413667549a-new'. When merging the branch to production, conflicts occurred. Which Git command must the developer use to recreate the pre-merge state?

- A. git merge -no-edit
- B. git merge -commit
- C. git merge -revert
- D. git merge -abort

**Answer:** D

#### Explanation:

<https://www.git-tower.com/learn/git/ebook/en/command-line/advanced-topics/merge-conflicts>

#### NEW QUESTION 242

- (Exam Topic 3)

Which IP service is used to monitor the performance of network devices?

- A. SNMP
- B. DHCP
- C. DNS
- D. NTP

**Answer:** A

#### NEW QUESTION 246

- (Exam Topic 3)

What is a comparison of YAML and JSON?

- A. YAML has a more consistent approach to representing data compared to JSON.
- B. JSON does not support comments and YAML does.
- C. YAML is a more verbose data structure compared to JSON.
- D. JSON has more common usage in configuration management tools compared to YAML.

**Answer:** B

#### Explanation:

Reference: <https://stackoverflow.com/questions/244777/can-comments-be-used-in-json>

Can I use comments in JSON? No, JSON is a data-only format. Comments in the form `//`, `#`, or `/* */`, which are used in popular programming languages, are not allowed in JSON. You can add comments to JSON as custom JSON elements that will hold your comments, but these elements will still be data.

#### NEW QUESTION 248

- (Exam Topic 3)

A developer has addressed a bug that was found in the production code of an application. A separate file named 'bug427896191v\_fix' has been created with the changes to the code. Which Git command must be used to incorporate the bug fix into the production code?

- A. git rebase
- B. git cat-file
- C. git merge-file
- D. git bisert

**Answer:** C

#### NEW QUESTION 253

- (Exam Topic 3)

Which function does a router provide to a network?

- A. broadcast domain segmentation
- B. unique host on a Layer 3 network
- C. unique hardware address for every node on a LAN
- D. broadcast domain extension

**Answer:** B

#### NEW QUESTION 254

- (Exam Topic 3)

A customer's cloud services must:

Migrate services to another data center on demand. Save the operational state of the machine on demand. Support Windows and Linux GUIs.

Maximize hardware utilization.  
 Which type of deployment meets these requirements?

- A. bare metal
- B. container
- C. virtual machine
- D. Kubernetes

**Answer: C**

#### NEW QUESTION 256

- (Exam Topic 3)

What is a benefit of version control?

- A. prevents two users from working on the same file
- B. keeps track of all changes to the files
- C. prevents the sharing of files
- D. keeps the list of data types used in the files

**Answer: B**

#### NEW QUESTION 259

- (Exam Topic 3)

```

- name: Configure Interfaces
  with_items: "{{ interfaces }}"
  netconf_config:
    <<: *host_info
    xml: |
      <config>
        <interfaces xmlns="urn:ietf:params:xml:ns:yang:ietf-interfaces">
          <interface>
            <name>{{ item.interface_type }}{{ item.interface_id }}</name>
            <description>{{ item.description }}</description>
            <type xmlns:ianaft="urn:ietf:params:xml:ns:yang:iana-if-type">ianaft:ethernetCsmacd</type>
            <enabled>true</enabled>
            <ipv4 xmlns="urn:ietf:params:xml:ns:yang:ietf-ip">
              <address>
                <ip>{{ item.ip_address }}</ip>
                <netmask>{{ item.subnet_mask }}</netmask>
              </address>
            </ipv4>
          </interface>
        </interfaces>
      </config>
    
```

Refer to the exhibit. A network engineer must configure new interfaces on a set of devices and is planning to use an Ansible playbook for the task. All devices support SSH and NETCONF protocol, and the interface variables are unique per device. In which directory are the YAML files including variables hosted to automate the task with the netconf\_config module?

- A. current working directory
- B. host\_vars directory
- C. group\_vars directory
- D. home directory

**Answer: A**

#### NEW QUESTION 262

- (Exam Topic 3)

What is a benefit of using a code review process in application development?

- A. accelerates the deployment of new features in an existing application
- B. provides version control during code development
- C. enables the quick deployment of new code
- D. eliminates common mistakes during development

**Answer: D**

#### NEW QUESTION 267

- (Exam Topic 3)

Which Python function is used to parse a string that contains JSON data into a Python dictionary?

- A. json.dumps()
- B. json.to\_json()
- C. json.parse()
- D. json.loads()

**Answer: D**

#### Explanation:

loads() function is present in python built-in 'json' module. This function is used to parse the JSON string.

#### NEW QUESTION 269

- (Exam Topic 3)

Drag and drop the steps from the left into order on the right to create a common CI/CD pipeline process. Not all options are used.

Build	step 1
Commit	step 2
Deploy	step 3
Evaluate	step 4
Test	
Regress	

- A. Mastered  
B. Not Mastered

**Answer:** A

**Explanation:**

Build	Commit
Commit	Build
Deploy	Test
Evaluate	Deploy
Test	
Regress	

#### NEW QUESTION 274

- (Exam Topic 3)

How does edge computing analyze sensitive data in the context of privacy control?

- A. locally instead of sending the data to the cloud for analysis  
B. locally or on the cloud depending on the configuration  
C. all at once by sending the data to the cloud  
D. locally on each node, and then sends the data to the cloud

**Answer:** A

#### NEW QUESTION 278

- (Exam Topic 3)

A company wants to automate the orders processed on its website using API. The network device that supports the solution must:

- > support XML encoding
- > support distributed transactions
- > support YANG data models
- > be support software redundancy

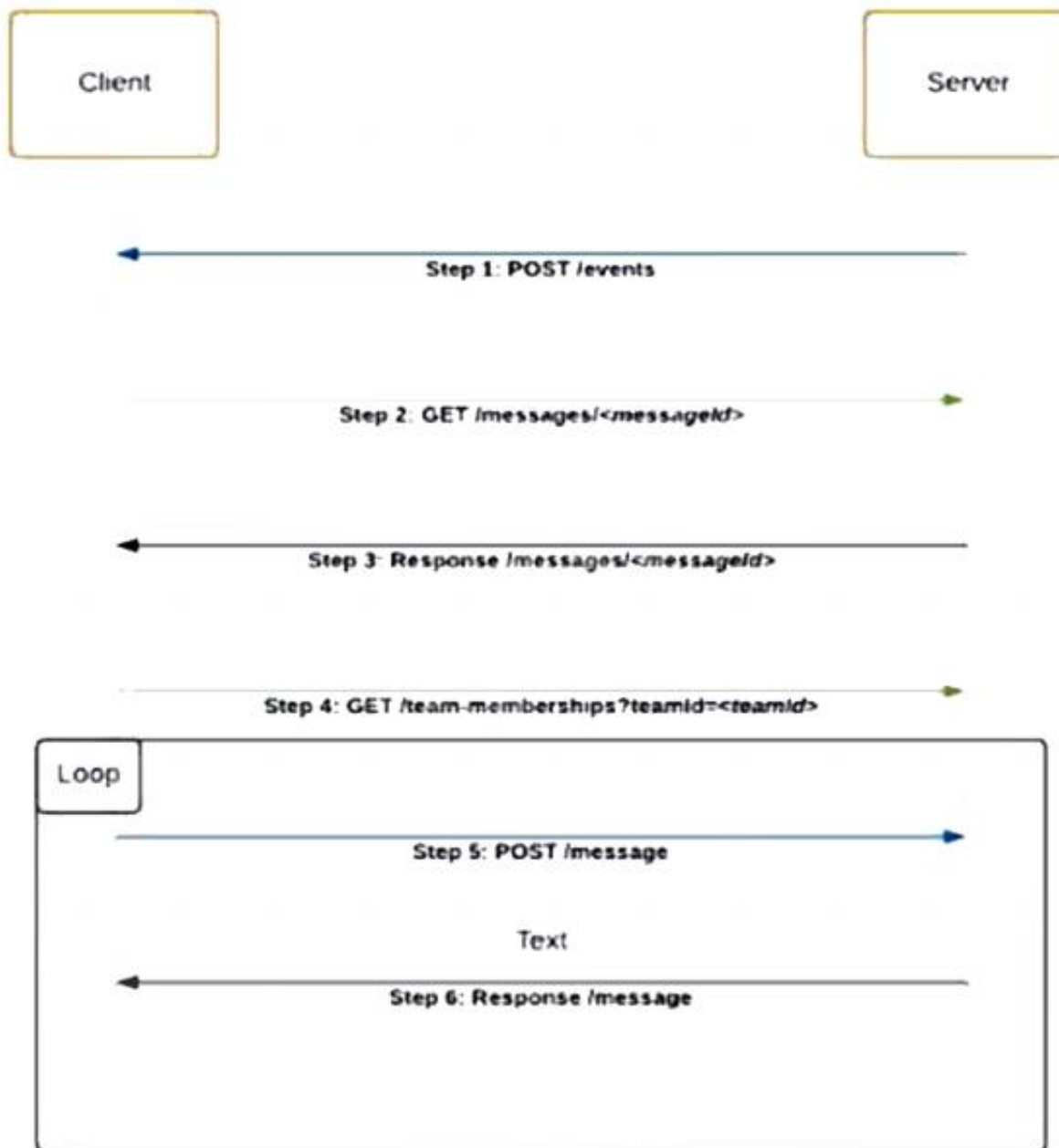
Which requirement prevents the use of RESTCONF for the solution?

- A. software redundancy  
B. YANG data models  
C. distributed transactions  
D. XML encoding

**Answer:** C

#### NEW QUESTION 279

- (Exam Topic 3)



Refer to the exhibit. Which code snippet represents the sequence.

- A. 

```
@flask_app.route('/events', methods=['POST'])
def webex_teams_webhook_events():
    json_data = request.json['data']
    response = requests.get(MESSAGE_URL +
    json_data['id'], headers=headers)
    if response.json()['text'] == 'Alert':
        response = requests.get(Team_MEMBERSHIPS_URL,
        headers=headers, params=params)
        for info in response.json()['items']:
            data = {'personId': info['personId'], 'text':
            'Alert'}
            response = requests.post(MESSAGES_URL,
            headers=headers, params=params)
```
- B. 

```
@flask_app.route('/events', methods=['POST'])
def webex_teams_webhook_events():
    json_data = request.json['data']
    if response.json()['text'] == 'Alert':
        response = requests.get(MESSAGE_URL +
        json_data['id'], headers=headers)
        response = requests.get(Team_MEMBERSHIPS_URL,
        headers=headers, params=params)
        for info in response.json()['items']:
            data = {'personId': info['personId'],
            'text': 'Alert'}
            response = requests.post(MESSAGES_URL,
            headers=headers, params=params)
```

C.



```
@flask_app.route('/events', methods=['POST'])
def webex_teams_webhook_events():
    json_data = request.json['data']
    response = requests.post(MESSAGE_URL +
                             json_data['id'], headers=headers)
    if response.json()['text'] == 'Alert':
        for info in response.json()['items']:
            response = requests.get(Team_MEMBERSHIPS_URL,
                                     headers=headers, params=params)
            data = {'personId': info['personId'], 'text':
                    'Alert'}
            response = requests.get(MESSAGES_URL,
                                     headers=headers, params=params)
```

D.

```
@flask_app.route('/events', methods=['POST'])
def webex_teams_webhook_events():
    json_data = request.json['data']
    response = requests.get(Team_MEMBERSHIPS_URL,
                             headers=headers, params=params)
    if response.json()['text'] == 'Alert':
        response = requests.get(MESSAGE_URL +
                                 json_data['id'], headers=headers)
        for info in response.json()['items']:
            data = {'personId': info['personId'], 'text':
                    'Alert'}
            response = requests.post(MESSAGES_URL,
                                     headers=headers, params=params)
```

Answer: C

#### NEW QUESTION 282

- (Exam Topic 3)

What is a feature of XML compared to other data formats?

- A. It uses tags to define the structure.
- B. It uses parenthesis for key-value pairs.
- C. It uses indentation to define the structure.
- D. It uses namespaces for list representation.

Answer: A

#### NEW QUESTION 285

- (Exam Topic 3)

What is a benefit of using model-driven programmability for infrastructure automation?

- A. connected user tracking
- B. infrastructure resource optimization
- C. multiple device control protocols
- D. device performance monitoring

Answer: C

#### NEW QUESTION 287

- (Exam Topic 3)

Which OWASP threat occurs when untrusted data is supplied as input to an interpreter as part of a command or query?

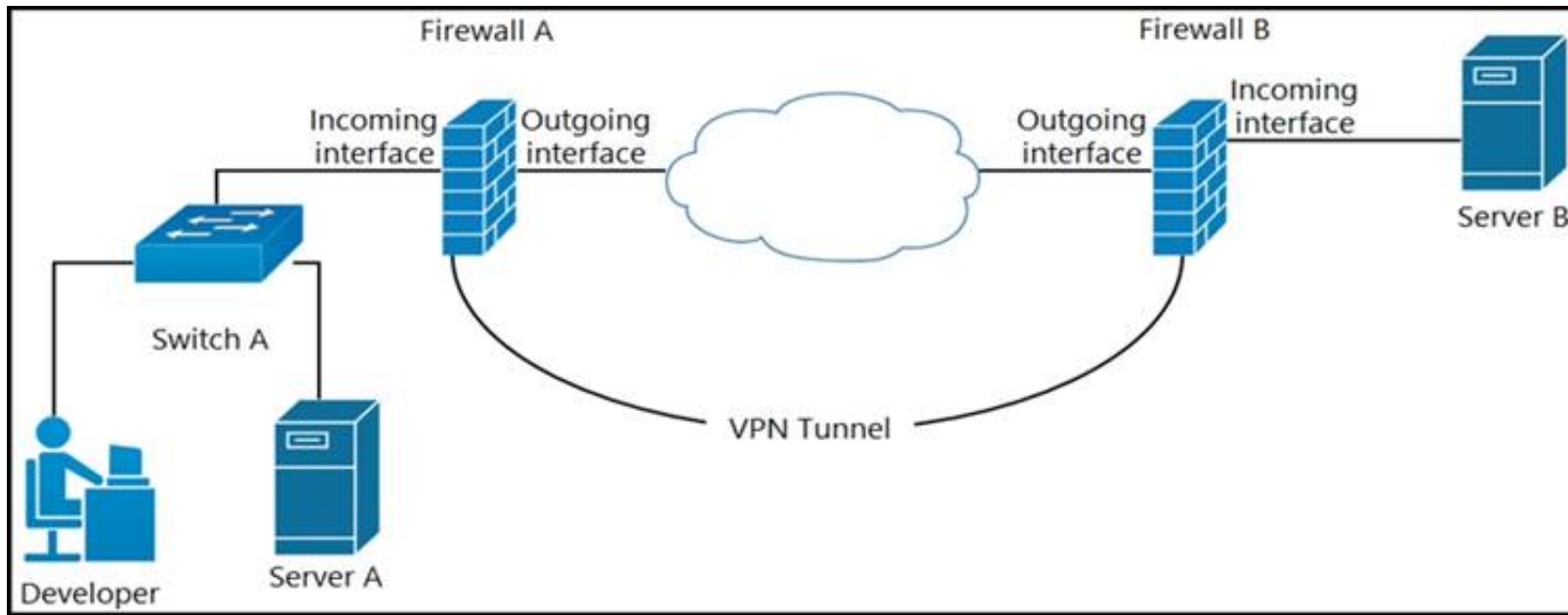
- A. broken authentication
- B. data exposure
- C. injection
- D. cross-site scripting

Answer: C

#### NEW QUESTION 292

- (Exam Topic 3)

Refer to the exhibit.



A developer can access the TLS REST API on server A, but cannot access the API on server B. The developer can ping server B. When the developer performs a packet capture on the TLS REST API port on server B, the capture shows that the packet arrived and the server responded. What causes the issue?

- A. Port 80 is blocked on the outgoing interface of firewall B.
- B. Port 443 is blocked on the outgoing interface of firewall A.
- C. Port 443 is blocked on the incoming interface of firewall B.
- D. Port 80 is blocked on the incoming interface of firewall A.

**Answer: C**

#### NEW QUESTION 295

- (Exam Topic 3)

A developer writes an application that refines data in temporary secure file storage hosted on the public cloud. Data will be deleted after processing and does not contain any private information. What is the advantage that a public cloud deployment provides to the developer?

- A. high security with encryption
- B. ease in infrastructure management
- C. flexible development
- D. bespoke services

**Answer: B**

#### NEW QUESTION 297

- (Exam Topic 3)

What are two benefits of implementing common data structures when working with APIs in remote systems? (Choose two.)

- A. ensures that developers are limited to using one data schema type
- B. prevents multivendor interoperability
- C. improves security in RESTful web services
- D. enforces standardized data structures
- E. leverages code that is easily managed and reused

**Answer: BE**

#### NEW QUESTION 302

- (Exam Topic 3)

What is the purpose of grouping devices in a VLAN?

- A. Devices communicate as if they are connected on the same wire.
- B. Multicast network traffic is limited to the VLAN connected devices.
- C. Unicast messages are limited to the clients connected on the same VLAN.
- D. Network traffic is load balanced between the devices connected to the VLAN.

**Answer: B**

#### NEW QUESTION 306

- (Exam Topic 3)

Refer to the exhibit. Drag and drop the code snippets from the bottom onto the blanks in the Python script to retrieve a list of network devices from Cisco DNA Center. Not all options are used.

```
import requests
import json
from urllib3.exceptions import InsecureRequestWarning

requests.packages.urllib3.disable_warnings()

dna_center_url = "My_DNA_Center_URL"
authentication = ("dnacenteruser", "dnacenter_password")

def get_token():
    url = "https:// " + dna_center_url + "/dna/system/api/v1/auth/token"
    response = requests.post(url, auth=authentication, verify=False)
    token = response.json()['Token']
    return token

def get_device_list():
    token = 
    url = "https:// " + dna_center_url + "dna/intent/api/v1/" + 
    header = {  : token, 'content-type' : 'application/json' }
    response = requests.get(url, headers=header)
    device_list = 
    print(json.dumps(device_list, indent=4))

if __name__ == "__main__":
    get_device_list()
```







- A. Mastered  
 B. Not Mastered

Answer: A

Explanation:

```
import requests
import json
from urllib3.exceptions import InsecureRequestWarning

requests.packages.urllib3.disable_warnings()

dna_center_url = "My_DNA_Center_URL"
authentication = ("dnacenteruser", "dnacenter_password")

def get_token():
    url = "https:// " + dna_center_url + "/dna/system/api/v1/auth/token"
    response = requests.post(url, auth=authentication, verify=False)
    token = response.json()['Token']
    return token

def get_device_list():
    token = 
    url = "https:// " + dna_center_url + "dna/intent/api/v1/" + 
    header = {  : token, 'content-type' : 'application/json' }
    response = requests.get(url, headers=header)
    device_list = 
    print(json.dumps(device_list, indent=4))

if __name__ == "__main__":
    get_device_list()
```







NEW QUESTION 308

.....

## THANKS FOR TRYING THE DEMO OF OUR PRODUCT

Visit Our Site to Purchase the Full Set of Actual 200-901 Exam Questions With Answers.

We Also Provide Practice Exam Software That Simulates Real Exam Environment And Has Many Self-Assessment Features. Order the 200-901 Product From:

<https://www.2passeasy.com/dumps/200-901/>

## Money Back Guarantee

### 200-901 Practice Exam Features:

- \* 200-901 Questions and Answers Updated Frequently
- \* 200-901 Practice Questions Verified by Expert Senior Certified Staff
- \* 200-901 Most Realistic Questions that Guarantee you a Pass on Your FirstTry
- \* 200-901 Practice Test Questions in Multiple Choice Formats and Updatesfor 1 Year