

az-500 Dumps

Microsoft Azure Security Technologies

<https://www.certleader.com/az-500-dumps.html>



NEW QUESTION 1

You need to meet the identity and access requirements for Group1.
What should you do?

- A. Add a membership rule to Group1.
- B. Delete Group1. Create a new group named Group1 that has a membership type of Office 365. Add users and devices to the group.
- C. Modify the membership rule of Group1.
- D. Change the membership type of Group1 to Assign
- E. Create two groups that have dynamic membership
- F. Add the new groups to Group1.

Answer: B

Explanation:

Incorrect Answers:

A, C: You can create a dynamic group for devices or for users, but you can't create a rule that contains both users and devices.

D: For assigned group you can only add individual members. Scenario:

Litware identifies the following identity and access requirements: All San Francisco users and their devices must be members of Group1. The tenant currently contain this group:

Name	Type	Description
Group1	Security group	A group that has the Dynamic User membership type, contains all the San Francisco users, and provides access to many Azure AD applications and Azure resources.

References:

<https://docs.microsoft.com/en-us/azure/active-directory/users-groups-roles/groups-dynamic-membership>

<https://docs.microsoft.com/en-us/azure/active-directory/fundamentals/active-directory-groups-create-azure-portal>

Testlet 2

This is a case study. Case studies are not timed separately. You can use as much exam time as you would like to complete each case. However, there may be additional case studies and sections on this exam. You must manage your time to ensure that you are able to complete all questions included on this exam in the time provided.

To answer the questions included in a case study, you will need to reference information that is provided in the case study. Case studies might contain exhibits and other resources that provide more information about the scenario that is described in the case study. Each question is independent of the other question on this case study.

At the end of this case study, a review screen will appear. This screen allows you to review your answers and to make changes before you move to the next sections of the exam. After you begin a new section, you cannot return to this section.

To start the case study

To display the first question on this case study, click the Next button. Use the buttons in the left pane to explore the content of the case study before you answer the questions. Clicking these buttons displays information such as business requirements, existing environment, and problem statements. If the case study has an All Information tab, note that the information displayed is identical to the information displayed on the subsequent tabs. When you are ready to answer a question, click the Question button to return to the question.

Overview

Contoso, Ltd. is a consulting company that has a main office in Montreal and two branch offices in Seattle and New York. The company hosts its entire server infrastructure in Azure.

Contoso has two Azure subscriptions named Sub1 and Sub2. Both subscriptions are associated to an Azure Active Directory (Azure AD) tenant named contoso.com.

Technical requirements

Contoso identifies the following technical requirements:

Deploy Azure Firewall to VNetWork1 in Sub2.

Register an application named App2 in contoso.com.

Whenever possible, use the principle of least privilege.

Enable Azure AD Privileged Identity Management (PIM) for contoso.com

Contoso.com contains the users shown in the following table.

Name	City	Role
User1	Montreal	Global administrator
User2	MONTREAL	Security administrator
User3	London	Privileged role administrator
User4	Ontario	Application administrator
User5	Seattle	Cloud application administrator
User6	Seattle	User administrator
User7	Sydney	Reports reader
User8	Sydney	None

Contoso.com contains the security groups shown in the following table.

Name	Membership type	Dynamic membership rule
Group1	Dynamic user	<code>user.city -contains "ON"</code>
Group2	Dynamic user	<code>user.city -match "*on"</code>

Sub1

Sub1 contains six resource groups named RG1, RG2, RG3, RG4, RG5, and RG6.

User2 creates the virtual networks shown in the following table.

Name	Resource group
VNET1	RG1
VNET2	RG2
VNET3	RG3
VNET4	RG4

Sub1 contains the locks shown in the following table.

Name	Set on	Lock type
Lock1	RG1	Delete
Lock2	RG2	Read-only
Lock3	RG3	Delete
Lock4	RG3	Read-only

Sub1 contains the Azure policies shown in the following table.

Policy definition	Resource type	Scope
Allowed resource types	networkSecurityGroups	RG4
Not allowed resource types	virtualNetworks/subnets	RG5
Not allowed resource types	networksSecurityGroups	RG5
Not allowed resource types	virtualNetworks/virtualNetworkPeerings	RG6

Sub2

Name	Subnet
VNetwork1	Subnet1.1, Subnet1.2 and Subnet1.3
VNetwork2	Subnet2.1

Sub2 contains the virtual machines shown in the following table.

Name	Network interface	Application security group	Connected to
VM1	NIC1	ASG1	Subnet1.1
VM2	NIC2	ASG2	Subnet1.1
VM3	NIC3	None	Subnet1.2
VM4	NIC4	ASG1	Subnet1.3
VM5	NIC5	None	Subnet2.1

All virtual machines have the public IP addresses and the Web Server (IIS) role installed. The firewalls for each virtual machine allow ping requests and web requests.

Sub2 contains the network security groups (NSGs) shown in the following table.

Name	Associated to
NSG1	NIC2
NSG2	Subnet1.1
NSG3	Subnet1.3
NSG4	Subnet2.1

NSG1 has the inbound security rules shown in the following table.

Priority	Port	Protocol	Source	Destination	Action
65000	Any	Any	VirtualNetwork	VirtualNetwork	Allow
65001	Any	Any	AzureLoadBalancer	Any	Allow
65500	Any	Any	Any	Any	Deny

NSG2 has the inbound security rules shown in the following table.

Priority	Port	Protocol	Source	Destination	Action
100	80	TCP	Internet	VirtualNetwork	Allow
65000	Any	Any	VirtualNetwork	VirtualNetwork	Allow
65001	Any	Any	AzureLoadBalancer	Any	Allow
65500	Any	Any	Any	Any	Deny

NSG3 has the inbound security rules shown in the following table.

Priority	Port	Protocol	Source	Destination	Action
100	Any	TCP	ASG1	ASG1	Allow
150	Any	Any	ASG2	VirtualNetwork	Allow
200	Any	Any	Any	Any	Deny
65000	Any	Any	VirtualNetwork	VirtualNetwork	Allow
65001	Any	Any	AzureLoadBalancer	Any	Allow
65500	Any	Any	Any	Any	Deny

NSG4 has the inbound security rules shown in the following table.

Priority	Port	Protocol	Source	Destination	Action
100	Any	Any	Any	Any	Allow
65000	Any	Any	VirtualNetwork	VirtualNetwork	Allow
65001	Any	Any	AzureLoadBalancer	Any	Allow
65500	Any	Any	Any	Any	Deny

NSG1, NSG2, NSG3, and NSG4 have the outbound security rules shown in the following table.

Priority	Port	Protocol	Source	Destination	Action
65000	Any	Any	VirtualNetwork	VirtualNetwork	Allow
65001	Any	Any	Any	Internet	Allow
65500	Any	Any	Any	Any	Deny

Contoso identifies the following technical requirements:

- * Deploy Azure Firewall to VNetwork1 in Sub2.
- * Register an application named App2 in contoso.com.
- * Whenever possible, use the principle of least privilege.
- * Enable Azure AD Privileged Identity Management (PIM) for contoso.com.m.

NEW QUESTION 2

You need to ensure that User2 can implement PIM.
What should you do first?

- A. Assign User2 the Global administrator role.
- B. Configure authentication methods for contoso.com.
- C. Configure the identity secure score for contoso.com.
- D. Enable multi-factor authentication (MFA) for User2.

Answer: A

Explanation:

To start using PIM in your directory, you must first enable PIM.

1. Sign in to the Azure portal as a Global Administrator of your directory.

You must be a Global Administrator with an organizational account (for example, @yourdomain.com), not a Microsoft account (for example, @outlook.com), to enable PIM for a directory.

Scenario: Technical requirements include: Enable Azure AD Privileged Identity Management (PIM) for contoso.com References:

<https://docs.microsoft.com/bs-latn-ba/azure/active-directory/privileged-identity-management/pim-getting-started>

NEW QUESTION 3

Note: This question is part of a series of questions that present the same scenario. Each question in the series contains a unique solution that might meet the stated goals. Some question sets might have more than one correct solution, while others might not have a correct solution.

After you answer a question in this section, you will NOT be able to return to it. As a result, these questions will not appear in the review screen.

You have an Azure Subscription named Sub1.

You have an Azure Storage account named Sa1 in a resource group named RG1.

Users and applications access the blob service and the file service in Sa1 by using several shared access signatures (SASs) and stored access policies. You discover that unauthorized users accessed both the file service and the blob service.

You need to revoke all access to Sa1. Solution: You generate new SASs. Does this meet the goal?

- A. Yes
- B. No

Answer: B

Explanation:

Instead you should create a new stored access policy.

To revoke a stored access policy, you can either delete it, or rename it by changing the signed identifier. Changing the signed identifier breaks the associations between any existing signatures and the stored access policy. Deleting or renaming the stored access policy immediately affects all of the shared access signatures associated with it.

References:

<https://docs.microsoft.com/en-us/rest/api/storageservices/Establishing-a-Stored-Access-Policy>

NEW QUESTION 4

Note: This question is part of a series of questions that present the same scenario. Each question in the series contains a unique solution that might meet the stated goals. Some question sets might have more than one correct solution, while others might not have a correct solution.

After you answer a question in this section, you will NOT be able to return to it. As a result, these questions will not appear in the review screen.

You have a hybrid configuration of Azure Active Directory (AzureAD). You have an Azure HDInsight cluster on a virtual network.

You plan to allow users to authenticate to the cluster by using their on-premises Active Directory credentials. You need to configure the environment to support the planned authentication.

Solution: You deploy the On-premises data gateway to the on-premises network. Does this meet the goal?

- A. Yes
- B. No

Answer: B

Explanation:

Instead, you connect HDInsight to your on-premises network by using Azure Virtual Networks and a VPN gateway.

- Note: To allow HDInsight and resources in the joined network to communicate by name, you must perform the following actions: Create Azure Virtual Network.
- Create a custom DNS server in the Azure Virtual Network.
- Configure the virtual network to use the custom DNS server instead of the default Azure Recursive Resolver. Configure forwarding between the custom DNS server and your on-premises DNS server.

References:

<https://docs.microsoft.com/en-us/azure/hdinsight/connect-on-premises-network>

NEW QUESTION 5

Your network contains an Active Directory forest named contoso.com. The forest contains a single domain.

You have an Azure subscription named Sub1 that is associated to an Azure Active Directory (Azure AD) tenant named contoso.com. You plan to deploy Azure AD Connect and to integrate Active Directory and the Azure AD tenant.

You need to recommend an integration solution that meets the following requirements:

- Ensures that password policies and user logon restrictions apply to user accounts that are synced to the tenant
- Minimizes the number of servers required for the solution.

Which authentication method should you include in the recommendation?

- A. federated identity with Active Directory Federation Services (AD FS)
- B. password hash synchronization with seamless single sign-on (SSO)
- C. pass-through authentication with seamless single sign-on (SSO)

Answer: B

Explanation:

Password hash synchronization requires the least effort regarding deployment, maintenance, and infrastructure. This level of effort typically applies to organizations that only need their users to sign in to Office 365, SaaS apps, and other Azure AD-based resources. When turned on, password hash synchronization is part of the Azure AD Connect sync process and runs every two minutes.

Incorrect Answers:

A: A federated authentication system relies on an external trusted system to authenticate users. Some companies want to reuse their existing federated system investment with their Azure AD hybrid identity solution. The maintenance and management of the federated system falls outside the control of Azure AD. It's up to the organization by using the federated system to make sure it's deployed securely and can handle the authentication load.

C: For pass-through authentication, you need one or more (we recommend three) lightweight agents installed on existing servers. These agents must have access to your on-premises Active Directory Domain Services, including your on-premises AD domain controllers. They need outbound access to the Internet and access to your domain controllers. For this reason, it's not supported to deploy the agents in a perimeter network.

Pass-through Authentication requires unconstrained network access to domain controllers. All network traffic is encrypted and limited to authentication requests.

References:

<https://docs.microsoft.com/en-us/azure/active-directory/hybrid/how-to-connect-pta>

NEW QUESTION 6

HOTSPOT

You have an Azure Active Directory (Azure AD) tenant named contoso.com. The tenant contains the users shown in the following table.

Name	Role	Sign in frequency
User1	Password administrator	Sign in every work day
User2	Password administrator	Sign in bi-weekly
User3	Global administrator, Password administrator	Signs in every month

You configure an access review named Review1 as shown in the following exhibit.

Create an access review

Access reviews enable reviewers to attest to users access.

* Review name

Review1

Description

* Start date

2019-03-01

Frequency

One time

Duration (in days)

1

End

Never

End by

Occurrences

* Number of times

0

* End date

2019-03-20

Users

Scope

Everyone

* Review role membership

Password administrator

Reviewers

Reviewers

Members(self)

Upon completion settings

Auto apply results to resource

Enable

Disable

Should reviewer not respond

Take recommendations

Advanced settings

Use the drop-down menus to select the answer choice that completes each statement based on the information presented in the graphic.

NOTE: Each correct selection is worth one point.

Hot Area:

Answer Area

User3 can perform Review1 for

User3 only

User1 and User2 only

User1, User2, and User3

If User2 fails to complete Review1 by March 20, 2019

The Password administrator role will be revoked from User2

User2 will retain the Password administrator role

User3 will receive a confirmation request

- A. Mastered
- B. Not Mastered

Answer: A

Explanation:

Box 1: User3 only

Use the Members (self) option to have the users review their own role assignments.

Box 2: User3 will receive a confirmation request

Use the Should reviewer not respond list to specify what happens for users that are not reviewed by the reviewer within the review period. This setting does not impact users who have been reviewed by the reviewers manually. If the final reviewer's decision is Deny, then the user's access will be removed.

No change - Leave user's access unchanged Remove access - Remove user's access Approve access - Approve user's access

Take recommendations - Take the system's recommendation on denying or approving the user's continued access

References:

<https://docs.microsoft.com/bs-latn-ba/azure/active-directory/privileged-identity-management/pim-how-to-start-security-review>

NEW QUESTION 7

You need to ensure that users can access VM0. The solution must meet the platform protection requirements.

What should you do?

- A. Move VM0 to Subnet1.
- B. On Firewall, configure a network traffic filtering rule.
- C. Assign RT1 to AzureFirewallSubnet.
- D. On Firewall, configure a DNAT rule.

Answer: A

Explanation:

Azure Firewall has the following known issue:

Conflict with Azure Security Center (ASC) Just-in-Time (JIT) feature.

If a virtual machine is accessed using JIT, and is in a subnet with a user-defined route that points to Azure Firewall as a default gateway, ASC JIT doesn't work. This is a result of asymmetric routing – a packet comes in via the virtual machine public IP (JIT opened the access), but the return path is via the firewall, which drops the packet because there is no established session on the firewall.

Solution: To work around this issue, place the JIT virtual machines on a separate subnet that doesn't have a user-defined route to the firewall. Scenario:

VM0	Virtual machine	VM0 is an Azure virtual machine that runs Windows Server 2016, connects to Subnet0, and has just in time (JIT) VM access configured.
-----	-----------------	--

Following the implementation of the planned changes, the IT team must be able to connect to VM0 by using JIT VM access.

Name	Type	Description
Firewall1	Azure Firewall	An Azure firewall on VNet1.
RT1	Route table	A route table that will contain a route pointing to Firewall1 as the default gateway and will be assigned to Subnet0.

References:

<https://docs.microsoft.com/en-us/azure/firewall/overview>

Testlet 2

This is a case study. Case studies are not timed separately. You can use as much exam time as you would like to complete each case. However, there may be additional case studies and sections on this exam. You must manage your time to ensure that you are able to complete all questions included on this exam in the time provided.

To answer the questions included in a case study, you will need to reference information that is provided in the case study. Case studies might contain exhibits and other resources that provide more information about the scenario that is described in the case study. Each question is independent of the other question on this case study.

At the end of this case study, a review screen will appear. This screen allows you to review your answers and to make changes before you move to the next sections of the exam. After you begin a new section, you cannot return to this section.

To start the case study

To display the first question on this case study, click the Next button. Use the buttons in the left pane to explore the content of the case study before you answer the questions. Clicking these buttons displays information such as business requirements, existing environment, and problem statements. If the case study has an All Information tab, note that the information displayed is identical to the information displayed on the subsequent tabs. When you are ready to answer a question, click the Question button to return to the question.

Overview

Contoso, Ltd. is a consulting company that has a main office in Montreal and two branch offices in Seattle and New York. The company hosts its entire server infrastructure in Azure.

Contoso has two Azure subscriptions named Sub1 and Sub2. Both subscriptions are associated to an Azure Active Directory (Azure AD) tenant named contoso.com.

Technical requirements

Contoso identifies the following technical requirements:

- _ Deploy Azure Firewall to VNetWork1 in Sub2. Register an application named App2 in contoso.com.
- _ Whenever possible, use the principle of least privilege.
- _ Enable Azure AD Privileged Identity Management (PIM) for contoso.com

Existing Environment Azure AD

Contoso.com contains the users shown in the following table.

Name	City	Role
User1	Montreal	Global administrator
User2	MONTREAL	Security administrator
User3	London	Privileged role administrator
User4	Ontario	Application administrator
User5	Seattle	Cloud application administrator
User6	Seattle	User administrator
User7	Sydney	Reports reader
User8	Sydney	None

Contoso.com contains the security groups shown in the following table.

Name	Membership type	Dynamic membership rule
Group1	Dynamic user	user.city -contains "ON"
Group2	Dynamic user	user.city -match "*on"

Sub1

Sub1 contains six resource groups named RG1, RG2, RG3, RG4, RG5, and RG6. User2 creates the virtual networks shown in the following table.

Name	Resource group
VNET1	RG1
VNET2	RG2
VNET3	RG3
VNET4	RG4

Sub1 contains the locks shown in the following table.

Name	Set on	Lock type
Lock1	RG1	Delete
Lock2	RG2	Read-only
Lock3	RG3	Delete
Lock4	RG3	Read-only

Sub1 contains the Azure policies shown in the following table.

Policy definition	Resource type	Scope
Allowed resource types	networkSecurityGroups	RG4
Not allowed resource types	virtualNetworks/subnets	RG5
Not allowed resource types	networksSecurityGroups	RG5
Not allowed resource types	virtualNetworks/virtualNetworkPeerings	RG6

Sub2

Sub2 contains the network security groups (NSGs) shown in the following table.

Name	Associated to
NSG1	NIC2
NSG2	Subnet1.1
NSG3	Subnet1.3
NSG4	Subnet2.1

NSG1 has the inbound security rules shown in the following table.

Priority	Port	Protocol	Source	Destination	Action
65000	Any	Any	VirtualNetwork	VirtualNetwork	Allow
65001	Any	Any	AzureLoadBalancer	Any	Allow
65500	Any	Any	Any	Any	Deny

NSG2 has the inbound security rules shown in the following table.

Priority	Port	Protocol	Source	Destination	Action
100	80	TCP	Internet	VirtualNetwork	Allow
65000	Any	Any	VirtualNetwork	VirtualNetwork	Allow
65001	Any	Any	AzureLoadBalancer	Any	Allow
65500	Any	Any	Any	Any	Deny

NSG3 has the inbound security rules shown in the following table.

Priority	Port	Protocol	Source	Destination	Action
100	Any	TCP	ASG1	ASG1	Allow
150	Any	Any	ASG2	VirtualNetwork	Allow
200	Any	Any	Any	Any	Deny
65000	Any	Any	VirtualNetwork	VirtualNetwork	Allow
65001	Any	Any	AzureLoadBalancer	Any	Allow
65500	Any	Any	Any	Any	Deny

NSG4 has the inbound security rules shown in the following table.

Priority	Port	Protocol	Source	Destination	Action
100	Any	Any	Any	Any	Allow
65000	Any	Any	VirtualNetwork	VirtualNetwork	Allow
65001	Any	Any	AzureLoadBalancer	Any	Allow
65500	Any	Any	Any	Any	Deny

NSG1, NSG2, NSG3, and NSG4 have the outbound security rules shown in the following table.

Priority	Port	Protocol	Source	Destination	Action
65000	Any	Any	VirtualNetwork	VirtualNetwork	Allow
65001	Any	Any	Any	Internet	Allow
65500	Any	Any	Any	Any	Deny

Contoso identifies the following technical requirements:

- Deploy Azure Firewall to VNetwork1 in Sub2. Register an application named App2 in contoso.com.
- Whenever possible, use the principle of least privilege.
- Enable Azure AD Privileged Identity Management (PIM) for contoso.com.

NEW QUESTION 8
HOTSPOT

What is the membership of Group1 and Group2? To answer, select the appropriate options in the answer area.

NOTE: Each correct selection is worth one point.

Hot Area:

Answer Area

Group1:

	▼
No members	
Only User2	
Only User2 and User4	
User1, User2, User3, and User4	

Group2:

	▼
No members	
Only User3	
Only User1 and User3	
User1, User2, User3, and User4	

- A. Mastered
- B. Not Mastered

Answer: A

Explanation:

Box 1: User1, User2, User3, User4

Contains "ON" is true for Montreal (User1), MONTREAL (User2), London (User 3), and Ontario (User4) as string and regex operations are not case sensitive.

Box 2: Only User3

Match "*on" is only true for London (User3).

Scenario:

Contoso.com contains the users shown in the following table.

Name	City	Role
User1	Montreal	Global administrator
User2	MONTREAL	Security administrator
User3	London	Privileged role administrator
User4	Ontario	Application administrator
User5	Seattle	Cloud application administrator
User6	Seattle	User administrator
User7	Sydney	Reports reader
User8	Sydney	None

Contoso.com contains the security groups shown in the following table.

Name	Membership type	Dynamic membership rule
Group1	Dynamic user	user.city -contains "ON"
Group2	Dynamic user	user.city -match "*on"

References:

<https://docs.microsoft.com/en-us/azure/active-directory/users-groups-roles/groups-dynamic-membership>

NEW QUESTION 9

You have an Azure subscription named Sub1. Sub1 contains a virtual network named VNet1 that contains one subnet named Subnet1.

You create a service endpoint for Subnet1.

Subnet1 contains an Azure virtual machine named VM1 that runs Ubuntu Server 18.04.

You need to deploy Docker containers to VM1. The containers must be able to access Azure Storage resources and Azure SQL databases by using the service endpoint.

- A. Create an application security group and a network security group (NSG).
- B. Edit the docker-compose.yml file.
- C. Install the container network interface (CNI) plug-in.

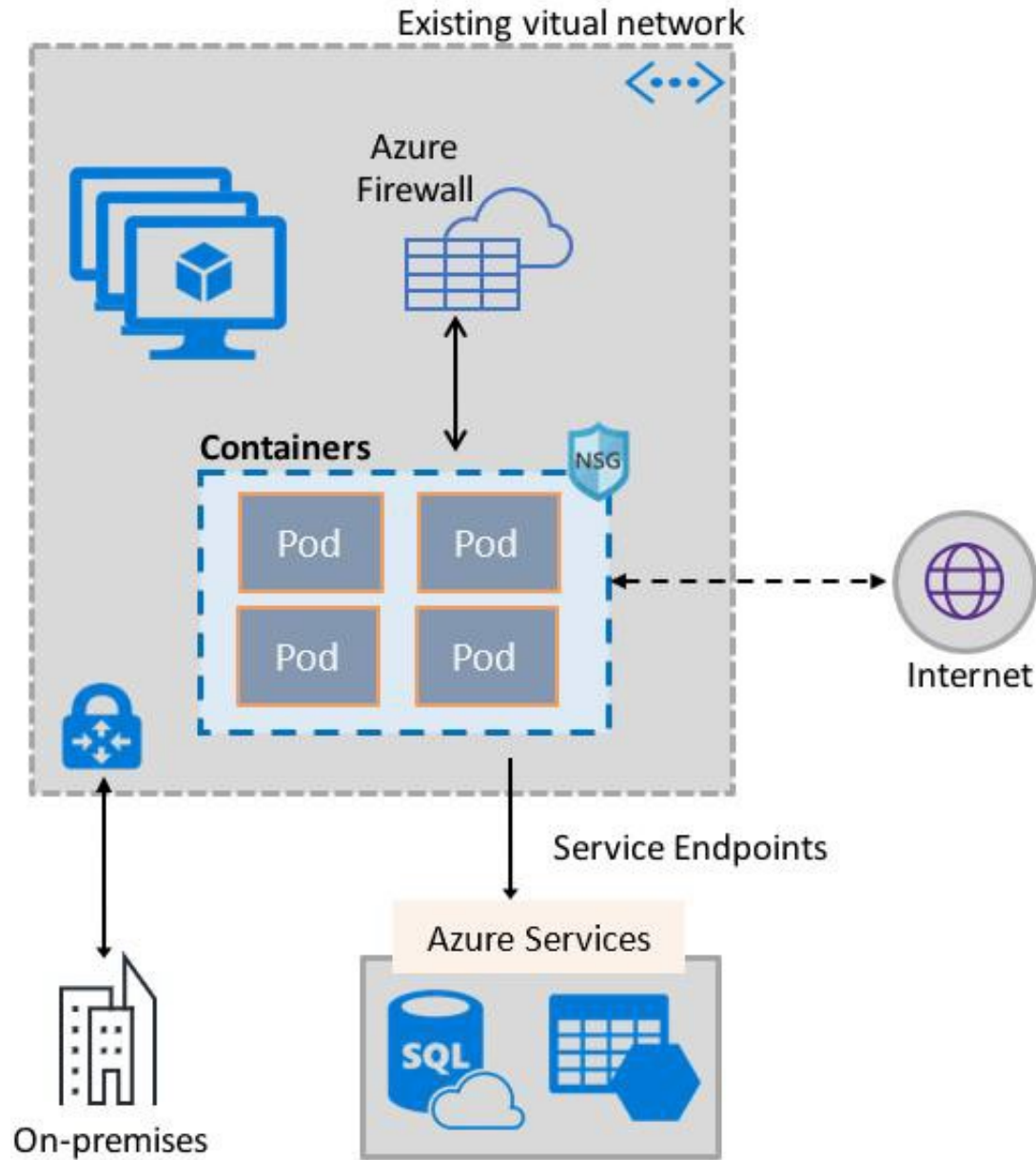
Answer: C

Explanation:

The Azure Virtual Network container network interface (CNI) plug-in installs in an Azure Virtual Machine. The plug-in supports both Linux and Windows platform.

The plug-in assigns IP addresses from a virtual network to containers brought up in the virtual machine, attaching them to the virtual network, and connecting them directly to other containers and virtual network resources. The plug-in doesn't rely on overlay networks, or routes, for connectivity, and provides the same performance as virtual machines.

The following picture shows how the plug-in provides Azure Virtual Network capabilities to Pods:



References:

<https://docs.microsoft.com/en-us/azure/virtual-network/container-networking-overview>

NEW QUESTION 10

HOTSPOT

You have an Azure subscription. The subscription contains Azure virtual machines that run Windows Server 2016.

You need to implement a policy to ensure that each virtual machine has a custom antimalware virtual machine extension installed. How should you complete the policy? To answer, select the appropriate options in the answer area.

NOTE: Each correct selection is worth one point.

Hot Area:

Answer Area

```

{
  "if": {
    "allOf": [
      {
        "field": "type",
        "equals": "Microsoft.Compute/virtualMachines"
      },
      {
        "field": "Microsoft.Compute/imageSKU",
        "equals": "2016-Datacenter",
      }
    ]
  },
  "then": {
    "effect": "Append",
    "details": {
      "type": "Microsoft.GuestConfiguration/guestConfigurationAssignments",
      "roleDefinitionsIds": [
        "/providers/microsoft.authorization/roleDefinitions/12345678-1234-5678-abcd-012345678910"
      ],
      "name": "customExtension",
      "deployment": {
        "properties": {
          "mode": "incremental",
          "parameters": {
            "existenceCondition": {
              "resources": {
                "template": {

```

- A. Mastered
- B. Not Mastered

Answer: A

Explanation:

Box 1: DeployIfNotExists

DeployIfNotExists executes a template deployment when the condition is met.

Box 2: Template

The details property of the DeployIfNotExists effects has all the subproperties that define the related resources to match and the template deployment to execute.

Deployment [required]

This property should include the full template deployment as it would be passed to the Microsoft.Resources/deployment References:

<https://docs.microsoft.com/en-us/azure/governance/policy/concepts/effects>

NEW QUESTION 10

HOTSPOT

You have Azure virtual machines that have Update Management enabled. The virtual machines are configured as shown in the following table.

Name	Operating system	Region	Resource group
VM1	Windows Server 2012	East US	RG1
VM2	Windows Server 2012 R2	West US	RG1
VM3	Windows Server 2016	West US	RG2
VM4	Ubuntu Server 18.04 LTS	West US	RG2
VM5	Red Hat Enterprise Linux 7.4	East US	RG1
VM6	CentOS 7.5	East US	RG1

You schedule two update deployments named Update1 and Update2. Update1 updates VM3. Update2 updates VM6.

Which additional virtual machines can be updated by using Update1 and Update2? To answer, select the appropriate options in the answer area.

NOTE: Each correct selection is worth one point.

Hot Area:

Answer Area

Update1:

	▼
VM2 only	
VM4 only	
VM1 and VM2 only	
VM1, VM2, VM4, VM5, and VM6	

Update2:

	▼
VM5 only	
VM1 and VM5 only	
VM4 and VM5 only	
VM1, VM2, and VM5 only	
VM1, VM2, VM3, VM4, and VM5	

- A. Mastered
- B. Not Mastered

Answer: A

Explanation:

Update1: VM1 and VM2 only

VM3: Windows Server 2016 West US RG2

Update2: VM4 and VM5 only VM6: CentOS 7.5 East US RG1

For Linux, the machine must have access to an update repository. The update repository can be private or public. References:

<https://docs.microsoft.com/en-us/azure/automation/automation-update-management>

NEW QUESTION 14

HOTSPOT

You have an Azure key vault.

You need to delegate administrative access to the key vault to meet the following requirements:

_ Provide a user named User1 with the ability to set advanced access policies for the key vault. Provide a user named User2 with the ability to add and delete certificates in the key vault. Use the principle of least privilege.

What should you use to assign access to each user? To answer, select the appropriate options in the answer area.

NOTE: Each correct selection is worth one point.

Hot Area:

Answer Area

User1:

	▼
A key vault access policy	
Azure Information Protection	
Azure Policy	
Managed identities for Azure resources	
RBAC	

User2:

	▼
A key vault access policy	
Azure Information Protection	
Azure Policy	
Managed identities for Azure resources	
RBAC	

- A. Mastered
- B. Not Mastered

Answer: A

Explanation:

User1: RBAC

_ RBAC is used as the Key Vault access control mechanism for the management plane. It would allow a user with the proper identity to: set Key Vault access policies

_ create, read, update, and delete key vaults set Key Vault tags

Note: Role-based access control (RBAC) is a system that provides fine-grained access management of Azure resources. Using RBAC, you can segregate duties within your team and grant only the amount of access to users that they need to perform their jobs.

User2: A key vault access policy

A key vault access policy is the access control mechanism to get access to the key vault data plane. Key Vault access policies grant permissions separately to keys, secrets, and certificates.

References:

<https://docs.microsoft.com/en-us/azure/key-vault/key-vault-secure-your-key-vault>

NEW QUESTION 17

HOTSPOT

You have two Azure virtual machines in the East US2 region as shown in the following table.

Name	Operating system	Type	Tier
VM1	Windows Server 2008 R2	A3	Basic
VM2	Ubuntu 16.04-DAILY-LTS	L4s	Standard

You deploy and configure an Azure Key vault.

You need to ensure that you can enable Azure Disk Encryption on VM1 and VM2.

What should you modify on each virtual machine? To answer, select the appropriate options in the answer area.

NOTE: Each correct selection is worth one point.

Hot Area:

Answer Area

VM1: ▼

The operating system version
The tier
The type

VM2: ▼

The operating system version
The tier
The type

- A. Mastered
- B. Not Mastered

Answer: A

Explanation:

VM1: The Tier

The Tier needs to be upgraded to standard.

Disk Encryption for Windows and Linux IaaS VMs is in General Availability in all Azure public regions and Azure Government regions for Standard VMs and VMs with Azure Premium Storage.

VM2: The type

Need to change the VMtype to any of A, D, DS, G, GS, F, and so on, series IaaS VMs.

Not the operating system version: Ubuntu 16.04 is supported. References:

<https://docs.microsoft.com/en-us/azure/security/azure-security-disk-encryption-overview>

https://docs.microsoft.com/en-us/azure/security/azure-security-disk-encryption-faq#bkmk_LinuxOSSupport

NEW QUESTION 18

You have an Azure virtual machines shown in the following table.

Name	Operating system	Region	Resource group
VM1	Windows Server 2012	East US	RG1
VM2	Windows Server 2012 R2	West Europe	RG1
VM3	Windows Server 2016	West Europe	RG2
VM4	Red Hat Enterprise Linux 7.4	East US	RG2

You create an Azure Log Analytics workspace named Analytics1 in RG1 in the East US region. Which virtual machines can be enrolled in Analytics1?

- A. VM1 only
- B. VM1, VM2, and VM3 only
- C. VM1, VM2, VM3, and VM4
- D. VM1 and VM4 only

Answer: A

Explanation:

Note: Create a workspace

_ In the Azure portal, click All services. In the list of resources, type Log Analytics. As you begin typing, the list filters based on your input. Select Log Analytics.

Click Create, and then select choices for the following items:

Provide a name for the new Log Analytics workspace, such as DefaultLAWorkspace. OMS workspaces are now referred to as Log Analytics workspaces. Select a Subscription to link to by selecting from the drop-down list if the default selected is not appropriate.

For Resource Group, select an existing resource group that contains one or more Azure virtual machines.

Select the Location your VMs are deployed to. For additional information, see which regions Log Analytics is available in. Incorrect Answers:

B, C: A Log Analytics workspace provides a geographic location for data storage. VM2 and VM3 are at a different location.

D: VM4 is a different resource group. References:

<https://docs.microsoft.com/en-us/azure/azure-monitor/platform/manage-access>

NEW QUESTION 23

HOTSPOT

Which virtual networks in Sub1 can User2 modify and delete in their current state? To answer, select the appropriate options in the answer area.

NOTE: Each correct selection is worth one point.

Hot Area:

Answer Area

Virtual networks that User2 can modify:

▼
VNET4 only
VNET4 and VNET1 only
VNET4, VNET3, and VNET1 only
VNET4, VNET3, VNET2, and VNET1

Virtual networks that User2 can delete:

▼
VNET4 only
VNET4 and VNET1 only
VNET4, VNET3, and VNET1 only
VNET4, VNET3, VNET2, and VNET1

- A. Mastered
- B. Not Mastered

Answer: A

Explanation:

Box 1: VNET4 and VNET1 only

RG1 has only Delete lock, while there are no locks on RG4. RG2 and RG3 both have Read-only locks.

Box 2: VNET4 only

There are no locks on RG4, while the other resource groups have either Delete or Read-only locks.

Note: As an administrator, you may need to lock a subscription, resource group, or resource to prevent other users in your organization from accidentally deleting or modifying critical resources. You can set the lock level to CanNotDelete or ReadOnly. In the portal, the locks are called Delete and Read-only respectively.

_ CanNotDelete means authorized users can still read and modify a resource, but they can't delete the resource.

_ ReadOnly means authorized users can read a resource, but they can't delete or update the resource. Applying this lock is similar to restricting all authorized users to the permissions granted by the Reader role.

Scenario:

User2 is a Security administrator.

Sub1 contains six resource groups named RG1, RG2, RG3, RG4, RG5, and RG6.

User2 creates the virtual networks shown in the following table.

Name	Resource group
VNET1	RG1
VNET2	RG2
VNET3	RG3
VNET4	RG4

Sub1 contains the locks shown in the following table.

Name	Set on	Lock type
Lock1	RG1	Delete
Lock2	RG2	Read-only
Lock3	RG3	Delete
Lock4	RG3	Read-only

References:

<https://docs.microsoft.com/en-us/azure/azure-resource-manager/resource-group-lock-resources>

Testlet 2

This is a case study. Case studies are not timed separately. You can use as much exam time as you would like to complete each case. However, there may be additional case studies and sections on this exam. You must manage your time to ensure that you are able to complete all questions included on this exam in the time provided.

To answer the questions included in a case study, you will need to reference information that is provided in the case study. Case studies might contain exhibits and other resources that provide more information about the scenario that is described in the case study. Each question is independent of the other question on this case study.

At the end of this case study, a review screen will appear. This screen allows you to review your answers and to make changes before you move to the next sections of the exam. After you begin a new section, you cannot return to this section.

To start the case study

To display the first question on this case study, click the Next button. Use the buttons in the left pane to explore the content of the case study before you answer the questions. Clicking these buttons displays information such as business requirements, existing environment, and problem statements. If the case study has an All Information tab, note that the information displayed is identical to the information displayed on the subsequent tabs. When you are ready to answer a question, click the Question button to return to the question.

Overview

Litware, Inc. is a digital media company that has 500 employees in the Chicago area and 20 employees in the San Francisco area.

Existing Environment

Litware has an Azure subscription named Sub1 that has a subscription ID of 43894a43-17c2-4a39-8cfc-3540c2653ef4.

Sub1 is associated to an Azure Active Directory (Azure AD) tenant named litwareinc.com. The tenant contains the user objects and the device objects of all the Litware employees and their devices. Each user is assigned an Azure AD Premium P2 license. Azure AD Privileged Identity Management (PIM) is activated.

The tenant contains the groups shown in the following table.

Name	Type	Description
Group1	Security group	A group that has the Dynamic User membership type, contains all the San Francisco users, and provides access to many Azure AD applications and Azure resources.
Group2	Security group	A group that has the Dynamic User membership type and contains the Chicago IT team

The Azure subscription contains the objects shown in the following table.

Name	Type	Description
VNet1	Virtual network	VNet1 is a virtual network that contains security-sensitive IT resources. VNet1 contains three subnets named Subnet0, Subnet1, and AzureFirewallSubnet.
VM0	Virtual machine	VM0 is an Azure virtual machine that runs Windows Server 2016, connects to Subnet0, and has just in time (JIT) VM access configured.
VM1	Virtual machine	VM1 is an Azure virtual machine that runs Windows Server 2016 and connects to Subnet0.
SQLDB1	Azure SQL Database	SQLDB1 is an Azure SQL database on a SQL Database server named LitwareSQLServer1.
WebApp1	Web app	WebApp1 is an Azure web app that is accessible by using https://litwareinc.com and http://www.litwareinc.com .
Resource Group1	Resource group	Resource Group1 is a resource group that contains VNet1, VM0, and VM1.
Resource Group2	Resource group	Resource Group2 is a resource group that contains shared IT resources.

Azure Security Center is set to the Free tier.

Planned changes

Litware plans to deploy the Azure resources shown in the following table.

Name	Type	Description
Firewall1	Azure Firewall	An Azure firewall on VNet1.
RT1	Route table	A route table that will contain a route pointing to Firewall1 as the default gateway and will be assigned to Subnet0.
AKS1	Azure Kubernetes Service (AKS)	A managed AKS cluster

Litware identifies the following identity and access requirements:

- _ All San Francisco users and their devices must be members of Group1.
- _ The members of Group2 must be assigned the Contributor role to Resource Group2 by using a permanent eligible assignment.
- _ Users must be prevented from registering applications in Azure AD and from consenting to applications that access company information on the users' behalf.

Platform Protection Requirements

Litware identifies the following platform protection requirements:

- _ Microsoft Antimalware must be installed on the virtual machines in Resource Group1.
- _ The members of Group2 must be assigned the Azure Kubernetes Service Cluster Admin Role. Azure AD users must be to authenticate to AKS1 by using their Azure AD credentials.
- _ Following the implementation of the planned changes, the IT team must be able to connect to VM0 by using JIT VM access.
- _ A new custom RBAC role named Role1 must be used to delegate the administration of the managed disks in Resource Group1. Role1 must be available only for Resource Group1.

Security Operations Requirements

Litware must be able to customize the operating system security configurations in Azure Security Center.

NEW QUESTION 25

You have an Azure subscription named Sub1 that is associated to an Azure Active Directory (Azure AD) tenant named contoso.com.

You are assigned the Global administrator role for the tenant. You are responsible for managing Azure Security Center settings. You need to create a custom sensitivity label.

What should you do first?

- Create a custom sensitive information type.
- Elevate access for global administrators in Azure AD.
- Upgrade the pricing tier of the Security Center to Standard.
- Enable integration with Microsoft Cloud App Security.

Answer: A

Explanation:

First, you need to create a new sensitive information type because you can't directly modify the default rules.

References:

<https://docs.microsoft.com/en-us/office365/securitycompliance/customize-a-built-in-sensitive-information-type>

NEW QUESTION 28

HOTSPOT

You suspect that users are attempting to sign in to resources to which they have no access.

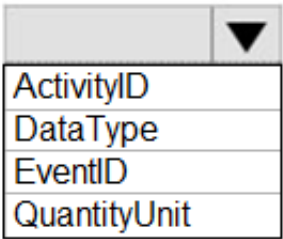
You need to create an Azure Log Analytics query to identify failed user sign-in attempts from the last three days. The results must only show users who had more than five failed sign-in attempts.

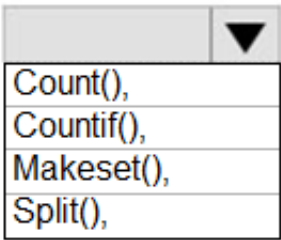
How should you configure the query? To answer, select the appropriate options in the answer area.

NOTE: Each correct selection is worth one point.

Hot Area:

Answer Area

```
let timeframe = 3d;
SecurityEvent
| where TimeGenerated > ago(3d)
| where AccountType == 'User' and  ==4625

| Summarize failed_login_attempts= 

latest_failed_login=arg_max(TimeGenerated by Account
| where failed_login_attempts > 5
```

A. Mastered

B. Not Mastered

Answer: A

Explanation:

The following example identifies user accounts that failed to log in more than five times in the last day, and when they last attempted to log in. let timeframe = 1d;

SecurityEvent

| where TimeGenerated > ago(1d)

| where AccountType == 'User' and EventID == 4625 // 4625 - failed log in

| summarize failed_login_attempts=count(), latest_failed_login=arg_max(TimeGenerated, Account) by Account

| where failed_login_attempts > 5

| project-away Account1

References:

<https://docs.microsoft.com/en-us/azure/azure-monitor/log-query/examples>

NEW QUESTION 33

You have an Azure subscription named Sub1.

In Azure Security Center, you have a security playbook named Play1. Play1 is configured to send an email message to a user named User1. You need to modify Play1 to send email messages to a distribution group named Alerts.

What should you use to modify Play1?

A. Azure DevOps

B. Azure Application Insights

C. Azure Monitor

D. Azure Logic Apps Designer

Answer: D

Explanation:

You can change an existing playbook in Security Center to add an action, or conditions. To do that you just need to click on the name of the playbook that you want to change, in the Playbooks tab, and Logic App Designer opens up.

References:

<https://docs.microsoft.com/en-us/azure/security-center/security-center-playbooks>

NEW QUESTION 36

You create a new Azure subscription.

You need to ensure that you can create custom alert rules in Azure Security Center. Which two actions should you perform? Each correct answer presents part of the solution. NOTE: Each correct selection is worth one point.

- A. Onboard Azure Active Directory (Azure AD) Identity Protection.
- B. Create an Azure Storage account.
- C. Implement Azure Advisor recommendations.
- D. Create an Azure Log Analytics workspace.
- E. Upgrade the pricing tier of Security Center to Standard.

Answer: BD

Explanation:

D: You need write permission in the workspace that you select to store your custom alert.

References:

<https://docs.microsoft.com/en-us/azure/security-center/security-center-custom-alert>

NEW QUESTION 41

You have an Azure subscription named Sub1 that contains an Azure Log Analytics workspace named LAW1.

You have 100 on-premises servers that run Windows Server 2012 R2 and Windows Server 2016. The servers connect to LAW1. LAW1 is configured to collect security-related performance counters from the connected servers.

You need to configure alerts based on the data collected by LAW1. The solution must meet the following requirements:

- _ Alert rules must support dimensions.
- _ The time it takes to generate an alert must be minimized.
- _ Alert notifications must be generated only once when the alert is generated and once when the alert is resolved.

Which signal type should you use when you create the alert rules?

- A. Log
- B. Log (Saved Query)
- C. Metric
- D. Activity Log

Answer: C

Explanation:

Metric alerts in Azure Monitor provide a way to get notified when one of your metrics cross a threshold. Metric alerts work on a range of multi-dimensional platform metrics, custom metrics, Application Insights standard and custom metrics.

Note: Signals are emitted by the target resource and can be of several types. Metric, Activity log, Application Insights, and Log. References:

<https://docs.microsoft.com/en-us/azure/azure-monitor/platform/alerts-metric>

NEW QUESTION 46

Your company has an Azure subscription named Sub1 that is associated to an Azure Active Directory (Azure AD) tenant named contoso.com.

The company develops an application named App1. App1 is registered in Azure AD.

You need to ensure that App1 can access secrets in Azure Key Vault on behalf of the application users. What should you configure?

- A. an application permission without admin consent
- B. a delegated permission without admin consent
- C. a delegated permission that requires admin consent
- D. an application permission that requires admin consent

Answer: B

Explanation:

Delegated permissions - Your client application needs to access the web API as the signed-in user, but with access limited by the selected permission. This type of permission can be granted by a user unless the permission requires administrator consent.

Incorrect Answers:

A, D: Application permissions - Your client application needs to access the web API directly as itself (no user context). This type of permission requires administrator consent and is also not available for public (desktop and mobile) client applications.

References:

<https://docs.microsoft.com/en-us/azure/active-directory/develop/quickstart-configure-app-access-web-apis>

NEW QUESTION 47

Your company has an Azure subscription named Sub1 that is associated to an Azure Active Directory Azure (Azure AD) tenant named contoso.com.

The company develops a mobile application named App1. App1 uses the OAuth 2 implicit grant type to acquire Azure AD access tokens. You need to register App1 in Azure AD.

What information should you obtain from the developer to register the application?

- A. a redirect URI
- B. a reply URL
- C. a key
- D. an application ID

Answer: A

Explanation:

For Native Applications you need to provide a Redirect URI, which Azure AD will use to return token responses.

References:

<https://docs.microsoft.com/en-us/azure/active-directory/develop/v1-protocols-oauth-code>

NEW QUESTION 49

You have an Azure subscription that contains an Azure key vault named Vault1.

In Vault1, you create a secret named Secret1.

An application developer registers an application in Azure Active Directory (Azure AD). You need to ensure that the application can use Secret1.

What should you do?

- A. In Azure AD, create a role.
- B. In Azure Key Vault, create a key.
- C. In Azure Key Vault, create an access policy.
- D. In Azure AD, enable Azure AD Application Proxy.

Answer: A

Explanation:

Azure Key Vault provides a way to securely store credentials and other keys and secrets, but your code needs to authenticate to Key Vault to retrieve them. Managed identities for Azure resources overview makes solving this problem simpler, by giving Azure services an automatically managed identity in Azure Active Directory (Azure AD). You can use this identity to authenticate to any service that supports Azure AD authentication, including Key Vault, without having any credentials in your code.

Example: How a system-assigned managed identity works with an Azure VM

After the VM has an identity, use the service principal information to grant the VM access to Azure resources. To call Azure Resource Manager, use role-based access control (RBAC) in Azure AD to assign the appropriate role to the VM service principal. To call Key Vault, grant your code access to the specific secret or key in Key Vault.

References:

<https://docs.microsoft.com/en-us/azure/key-vault/quick-create-net>

<https://docs.microsoft.com/en-us/azure/active-directory/managed-identities-azure-resources/overview>

NEW QUESTION 51

You have an Azure SQL Database server named SQL1.

You plan to turn on Advanced Threat Protection for SQL1 to detect all threat detection types. Which action will Advanced Threat Protection detect as a threat?

- A. A user updates more than 50 percent of the records in a table.
- B. A user attempts to sign as select * from table1.
- C. A user is added to the db_owner database role.
- D. A user deletes more than 100 records from the same table.

Answer: B

Explanation:

Advanced Threat Protection can detect potential SQL injections: This alert is triggered when an active exploit happens against an identified application vulnerability to SQL injection. This means the attacker is trying to inject malicious SQL statements using the vulnerable application code or stored procedures.

References:

<https://docs.microsoft.com/en-us/azure/sql-database/sql-database-threat-detection-overview>

NEW QUESTION 53

HOTSPOT

You have the Azure Information Protection conditions shown in the following table.

Name	Pattern	Case sensitivity
Condition1	White	On
Condition2	Black	Off

You have the Azure Information Protection labels shown in the following table.

Name	Applies to	Use label	Set the default label
Global	<i>Not applicable</i>	<i>None</i>	<i>None</i>
Policy1	User1	Label1	None
Policy2	User1	Label2	None

You need to identify how Azure Information Protection will label files.

What should you identify? To answer, select the appropriate options in the answer area.

NOTE: Each correct selection is worth one point.

Hot Area:

Answer Area

If User1 creates a Microsoft Word file that includes the text "Black and White", the file will be assigned:

▼

No label
Label1 only
Label2 only
Label1 and Label2

If User1 creates a Microsoft Notepad file that includes the text "Black or white", the file will be assigned:

▼

No label
Label1 only
Label2 only
Label1 and Label2

- A. Mastered
- B. Not Mastered

Answer: A

Explanation:

Box 1: Label 2 only

How multiple conditions are evaluated when they apply to more than one label

1. The labels are ordered for evaluation, according to their position that you specify in the policy: The label positioned first has the lowest position (least sensitive) and the label positioned last has the highest position (most sensitive).

2. The most sensitive label is applied.

3. The last sublabel is applied.

Box 2: No Label

Automatic classification applies to Word, Excel, and PowerPoint when documents are saved, and apply to Outlook when emails are sent. Automatic classification does not apply to Microsoft Notepad.

References:

<https://docs.microsoft.com/en-us/azure/information-protection/configure-policy-classification>

NEW QUESTION 56

Your company uses Azure DevOps.

You need to recommend a method to validate whether the code meets the company's quality standards and code review standards. What should you recommend implementing in Azure DevOps?

A. branch folders

B. branch permissions

C. branch policies

D. branch locking

Answer: C

Explanation:

Branch policies help teams protect their important branches of development. Policies enforce your team's code quality and change management standards.

References:

<https://docs.microsoft.com/en-us/azure/devops/repos/git/branch-policies?view=azure-devops&viewFallbackFrom=vsts>

NEW QUESTION 58

.....

Thank You for Trying Our Product

* 100% Pass or Money Back

All our products come with a 90-day Money Back Guarantee.

* One year free update

You can enjoy free update one year. 24x7 online support.

* Trusted by Millions

We currently serve more than 30,000,000 customers.

* Shop Securely

All transactions are protected by VeriSign!

100% Pass Your az-500 Exam with Our Prep Materials Via below:

<https://www.certleader.com/az-500-dumps.html>