

## Exam Questions AZ-800

Administering Windows Server Hybrid Core Infrastructure

<https://www.2passeasy.com/dumps/AZ-800/>



#### NEW QUESTION 1

- (Exam Topic 3)

You have an on-premises server named Server1 that runs Windows Server. You have an Azure virtual network that contains an Azure virtual network gateway. You need to connect only Server1 to the Azure virtual network. What should you use?

- A. Azure Network Adapter
- B. a Site-to-SiteVPN
- C. an ExpressRoute circuit
- D. Azure Extended Network

**Answer:** D

#### Explanation:

Reference:

<https://docs.microsoft.com/en-us/windows-server/manage/windows-admin-center/azure/use-azure-network-adap>

#### NEW QUESTION 2

- (Exam Topic 3)

You have five file servers that run Windows Server.

You need to block users from uploading video files that have the .mov extension to shared folders on the file servers. All other types of files must be allowed. The solution must minimize administrative effort.

What should you create?

- A. a Dynamic Access Control central access policy
- B. a file screen
- C. a Dynamic Access Control central access rule
- D. a data loss prevention (DLP) policy

**Answer:** B

#### Explanation:

Reference:

<https://docs.microsoft.com/en-us/windows-server/storage/fsrm/file-screening-management>

#### NEW QUESTION 3

- (Exam Topic 3)

Your network contains a single-domain Active Directory Domain Services (AD DS) forest named conto.com. The forest contains the servers shown in the following exhibit table.

| Name    | Description       |
|---------|-------------------|
| DC1     | Domain controller |
| Server1 | Member server     |

You plan to install a line-of-business (LOB) application on Server1. The application will install a custom windows services.

A new corporate security policy states that all custom Windows services must run under the context of a group managed service account (gMSA). You deploy a root key.

You need to create, configure, and install the gMSA that will be used by the new application.

Which two actions should you perform? Each correct answer presents part of the solution. NOTE: Each correct selection is worth one point.

- A. On Server1, run the install-ADServiceAccount cmdlet.
- B. On DC1, run the New-ADServiceAccount cmdlet.
- C. On DC1, run the Set\_ADComputer cmdlet.
- D. ON DC1, run the Install-ADServiceAccount cmdlet.
- E. On Server1, run the Get-ADServiceAccount cmdlet.

**Answer:** AB

#### NEW QUESTION 4

- (Exam Topic 3)

You have a server named Server1 that hosts Windows containers. You plan to deploy an application that will have multiple containers. Each container will be You need to create a Docker network that supports the deployment of the application. Which type of network should you create?

- A. transparent
- B. I2bridge
- C. NAT
- D. I2tunnel

**Answer:** A

#### Explanation:

Reference:

<https://docs.microsoft.com/en-us/virtualization/windowscontainers/container-networking/network-drivers-topolo>

#### NEW QUESTION 5

- (Exam Topic 3)

Your network contains an Active Directory Domain Services (AD DS) forest named contoso.com. The forest contains a child domain named east.contoso.com. in the contoso.com domain, you create two users named Admin1 and Admin2. You need to ensure that the users can perform the following tasks:

- Admin1 can create and manage Active Directory sites.
  - Admin2 can deploy domain controller to the easl.conloso.com domain. The solution must use the principle of least privilege.
- To which group should you add each user? To answer, select the appropriate options in the answer area. NOTE Each correct selection is worth one point.

Answer Area

Admin1:

Contoso\Administrators

Contoso\Domain Admins

Contoso\Enterprise Admins

East\Administrators

East\Domain Admins

Admin2:

Contoso\Administrators

Contoso\Domain Admins

Contoso\Enterprise Admins

East\Administrators

East\Domain Admins

- A. Mastered  
B. Not Mastered

Answer: A

Explanation:

Reference:

<https://docs.microsoft.com/en-us/windows-server/remote/remote-access/ras/multisite/configure/step-2-configure>

NEW QUESTION 6

- (Exam Topic 3)

Note: This question is part of a series of questions that present the same scenario. Each question in the series contains a unique solution that might meet the stated goals. Some question sets might have more than one correct solution, while others might not have a correct solution.

After you answer a question in this section, you will NOT be able to return to it. As a result, these questions will not appear in the review screen.

Your network contains an Active Directory Domain Services (AD DS) domain named contoso.com. You need to identify which server is the PDC emulator for the domain.

Solution: From Active Directory Domains and Trusts, you right-click Active Directory Domains and Trusts in the console tree, and then select Operations Master. Does this meet the goal?

- A. Yes  
B. No

Answer: B

NEW QUESTION 7

- (Exam Topic 3)

You have two on-premises servers named Server1 and Servet2 that run Windows Server.

You have an Azure Storage account named storage1 that contains a file share named share'. Server1 syncs with share1 by using Azure File Sync

You need to configure Server2 to sync with share1.

Which three actions should you perform in sequence? To answer, move the appropriate actions from the list of actions to the answer area and arrange them in the correct order.

Actions

Register Server2 with the Storage Sync Service.

Add a Storage Sync Service to the Azure subscription.

On Server2, install the Azure File Sync agent.

Add a cloud endpoint to the sync group.

Add a server endpoint to the sync group.

Answer Area

- A. Mastered  
B. Not Mastered

Answer: A

Explanation:

Graphical user interface, text, application, chat or text message Description automatically generated

NEW QUESTION 8

- (Exam Topic 3)

You plan to deploy an Azure virtual machine that will run Windows Server.

You need to ensure that an Azure Active Directory (Azure AD) user nameduserl@contoso.com can connect 10 the virtual machine by using the Azure Serial Console.

What should you do? To answer, select the appropriate options in the answer area. NOTE: Each correct selection is worth one point.

Answer Area

Configure on the Azure virtual machine:

Boot diagnostics with a custom storage account  
 Operating system guest diagnostics  
 A system-assigned managed identity

Assign the following role to User1:

Virtual Machine Contributor  
 Virtual Machine Administrator Login  
 Virtual Machine User Login

- A. Mastered  
 B. Not Mastered

Answer: A

Explanation:

Reference:

<https://docs.microsoft.com/en-us/troubleshoot/azure/virtual-machines/serial-console-overview>

NEW QUESTION 9

- (Exam Topic 3)

Your network contains an Active Directory Domain Services (AD DS) forest. The forest contains three Active Directory sites named Site1, Site2, and Site3. Each site contains two domain controllers. The sites are connected by using DEFAULTIPSITELINK.

You open a new branch office that contains only client computers.

You need to ensure that the client computers in the new office are primarily authenticated by the domain controllers in Site1.

Solution: You configure the Try Next Closest Site Group Policy Object (GPO) setting in a GPO that is linked to Site1.

Does this meet the goal?

- A. Yes  
 B. No

Answer: B

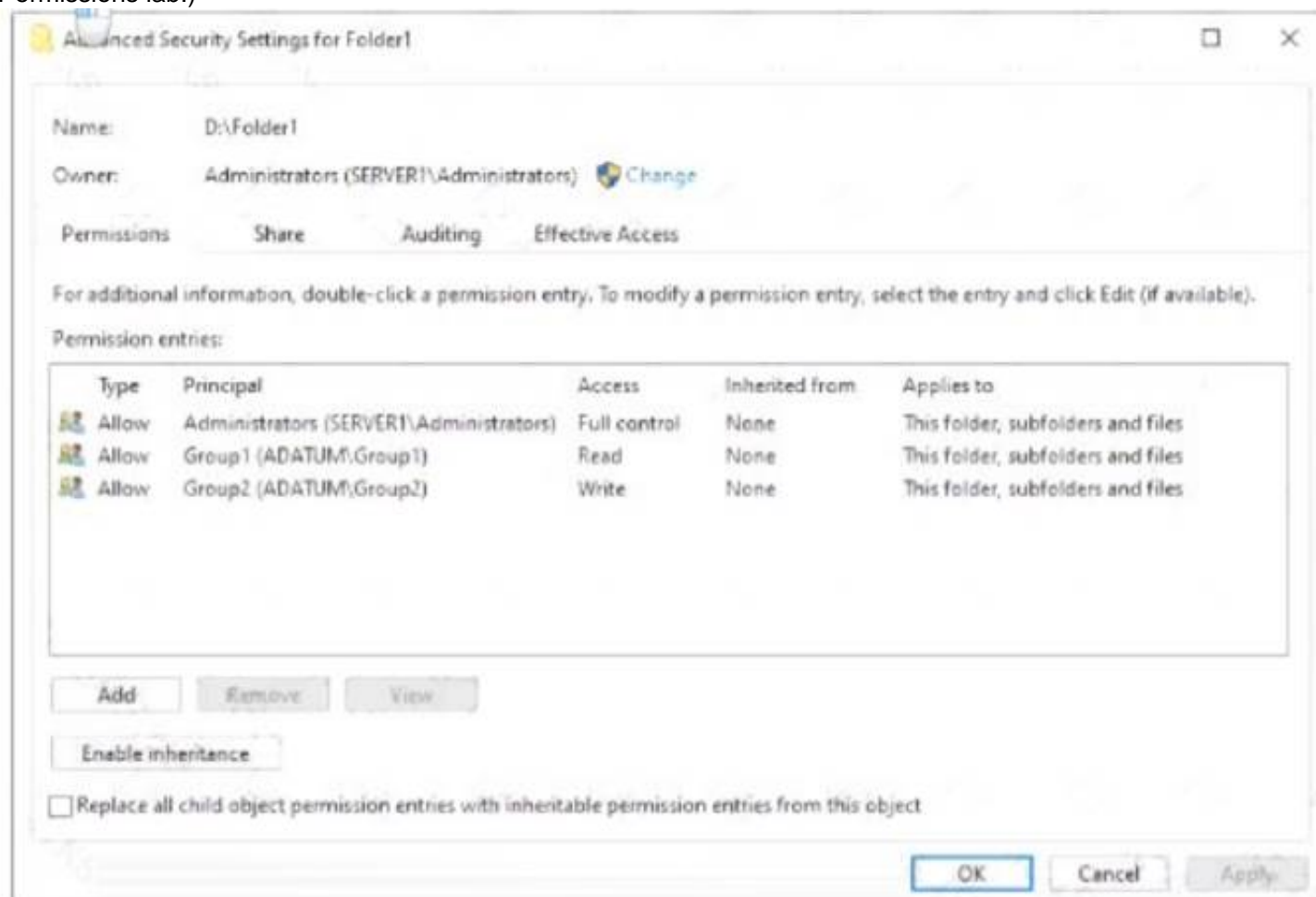
NEW QUESTION 10

- (Exam Topic 3)

Your network contains an Active Directory Domain Services (AD DS) domain named adatum.com. The domain contains a server named Server1 and the users shown in the following table.

| Name  | Member of |
|-------|-----------|
| User1 | Group1    |
| User2 | Group2    |
| User3 | Group3    |

Server1 contains a folder named D:\Folder1. The advanced security settings for Folder 1 are configured as shown in the Permissions exhibit. (Click the Permissions tab.)



Folder1 is shared by using the following configurations

| Group  | Permission           |
|--------|----------------------|
| Group1 | Allow - Change       |
| Group3 | Allow - Full Control |

Path : D:\Folder1  
Name : Share1  
ShareType : FileSystemDirectory  
FolderEnumerationMode : Unrestricted

Answer Area

| Statements  | Yes                   | No                    |
|---|-----------------------|-----------------------|
| User1 can read the files in Share1.                           | <input type="radio"/> | <input type="radio"/> |
| User3 can delete files in Share1.                             | <input type="radio"/> | <input type="radio"/> |
| If User2 connects to \\Server1.adatum.com from File Explorer, | <input type="radio"/> | <input type="radio"/> |

- A. Mastered
- B. Not Mastered

Answer: A

Explanation:

Answer Area

| Statements  | Yes                              | No                               |
|---|----------------------------------|----------------------------------|
| User1 can read the files in Share1.                           | <input checked="" type="radio"/> | <input type="radio"/>            |
| User3 can delete files in Share1.                             | <input checked="" type="radio"/> | <input type="radio"/>            |
| If User2 connects to \\Server1.adatum.com from File Explorer, | <input type="radio"/>            | <input checked="" type="radio"/> |

NEW QUESTION 10

- (Exam Topic 3)  
You deploy a single-domain Active Directory Domain Services (AD DS) forest named contoso.com. You deploy five servers to the domain. You add the servers to a group named iTFarmHosts.  
You plan to configure a Network Load Balancing (NLB) cluster named NLBCluster.contoso.com that will contain the five servers.  
You need to ensure that the NLB service on the nodes of the cluster can use a group managed service account (gMSA) to authenticate.  
Which three PowerShell cmdlets should you run in sequence? To answer, move the appropriate cmdlets from the list of cmdlets to the answer area and arrange them in the correct order.

Cmdlets

Answer Area

Add-KdsRootKey

Set-KdsConfiguration

Install-ADServiceAccount

Add-ADGroupMember

New-ADServiceAccount

Add-ADComputerServiceAccount

>

<

- A. Mastered
- B. Not Mastered

Answer: A

Explanation:

Text Description automatically generated  
Reference:  
https://docs.microsoft.com/en-us/windows-server/security/group-managed-service-accounts/create-the-key-distr https://docs.microsoft.com/en-us/windows-server/security/group-managed-service-accounts/getting-started-with

NEW QUESTION 11

- (Exam Topic 3)  
You have an Azure Active Directory Domain Services (Azure AD DS) domain named contoso.com.  
You need to provide an administrator with the ability to manage Group Policy Objects (GPOs). The solution must use the principle of least privilege.  
To which group should you add the administrator?

- A. AAD DC Administrators
- B. Domain Admins
- C. Schema Admins
- D. Enterprise Admins
- E. Group Policy Creator Owners



**Answer:** B

**Explanation:**

Only the Domain Admins group and the Enterprise Admins group can fully manage GPOs. Members of the Group Policy Creator Owners group can create new GPOs but they can't link the GPOs to sites, the domain or OUs and they cannot manage existing GPOs.

**NEW QUESTION 16**

- (Exam Topic 3)

You have an on premises Active Directory Domain Services (AD DS) domain that syncs with an Azure Active Directory (Azure AD) tenant. The domain contains two servers named Server1 and Server2.

A user named Admin1 is a member of the local Administrators group on Server1 and Server2.

You plan to manage Server1 and Server2 by using Azure Arc. Azure Arc objects will be added to a resource group named RG1.

You need to ensure that Admin1 can configure Server1 and Server2 to be managed by using Azure Arc. What should you do first?

- A. From the Azure portal, generate a new onboarding script.
- B. Assign Admin1 the Azure Connected Machine Onboarding role for RG1.
- C. Hybrid Azure AD join Server1 and Server2.
- D. Create an Azure cloud-only account for Admin1.

**Answer:** B

**Explanation:**

Reference:

<https://docs.microsoft.com/en-us/azure/azure-arc/servers/onboard-service-principal>

**NEW QUESTION 20**

- (Exam Topic 3)

You have a Windows Server container host named Server1 that has a single disk. On Server1, you plan to start the containers shown in the following table.

| Name       | Description   |
|------------|---|
| Container1 | Container1 is a Windows container that contains a web app in development. The container must <b>NOT</b> share a kernel with other containers. |
| Container2 | Container2 is a Linux container that runs a web app. The container requires two static IP addresses.  |
| Container3 | Container3 is a Windows container that runs a database. The container requires a static IP address.   |

Which isolation mode can you use for each container? To answer, select the appropriate options in the answer area.

NOTE: Each correct selection is worth one point.

Container1:

|  |
|--|
|  |
| Hyper-V isolation only                 |
| Process isolation only                 |
| Hyper-V isolation or process isolation |

Container2:

|  |
|--|
|  |
| Hyper-V isolation only                 |
| Process isolation only                 |
| Hyper-V isolation or process isolation |

Container3:

|  |
|--|
|  |
| Hyper-V isolation only                 |
| Process isolation only                 |
| Hyper-V isolation or process isolation |

- A. Mastered
- B. Not Mastered

**Answer:** A

**Explanation:**

Graphical user interface, text, application, email Description automatically generated

Reference:

<https://docs.microsoft.com/en-us/virtualization/windowscontainers/manage-containers/hyperv-container>

### NEW QUESTION 25

- (Exam Topic 3)

Note: This question is part of a series of questions that present the same scenario. Each question in the series contains a unique solution that might meet the stated goals. Some question sets might have more than one correct solution, while others might not have a correct solution.

After you answer a question in this section, you will NOT be able to return to it. As a result, these questions will not appear in the review screen.

Your network contains an Active Directory Domain Services (AD DS) forest. The forest contains three Active Directory sites named Site1, Site2, and Site3. Each site contains two domain controllers. The sites are connected by using DEFAULTIPSITELINK.

You open a new branch office that contains only client computers.

You need to ensure that the client computers in the new office are primarily authenticated by the domain controllers in Site1.

Solution: You create an organization unit (OU) that contains the client computers in the branch office. You configure the Try Next Closest Site Group Policy Object (GPO) setting in a GPO that is linked to the new OU.

Does this meet the goal?

- A. Yes
- B. No

**Answer: B**

### NEW QUESTION 27

- (Exam Topic 3)

You have servers that have the DNS Server role installed. The servers are configured as shown in the following table.

| Name    | Office   | Local DNS zone | IP address |
|---------|----------|----------------|------------|
| Server1 | Paris    | contoso.com    | 10.1.1.1   |
| Server2 | New York | None           | 10.2.2.2   |

All the client computers in the New York office use Server2 as the DNS server.

You need to configure name resolution in the New York office to meet the following requirements:

- Ensure that the client computers in New York can resolve names from contoso.com.
- Ensure that Server2 forwards all DNS queries for internet hosts to 131. 107.100.200. The solution must NOT require modifications to Server1.

Each correct answer presents part of the solution. NOTE: Each correct selection is worth one point.

- A. a forwarder
- B. a conditional forwarder
- C. a delegation
- D. a secondary zone
- E. a reverse lookup zone

**Answer: AB**

#### Explanation:

A conditional forwarder is required for contoso.com. A forwarder is required for all other domains.

When you have a conditional forwarder and a forwarder configured, the conditional forwarder will be used for the specified domain.

You could use a secondary zone for contoso.com but that would require a configuration change on Server1.

### NEW QUESTION 32

- (Exam Topic 3)

Your network contains an Active Directory Domain Services (AD DS) forest. The forest contains three Active Directory sites named Site1, Site2, and Site3. Each site contains two domain controllers. The sites are connected by using DEFAULTIPSITELINK.

You open a new branch office that contains only client computers.

You need to ensure that the client computers in the new office are primarily authenticated by the domain controllers in Site1.

Solution: You create a new subnet object that is associated to Site1. Does this meet the goal?

- A. Yes
- B. No

**Answer: B**

### NEW QUESTION 35

- (Exam Topic 3)

You have an Azure virtual machine named VM1 that runs Windows Server

You need to configure the management of VM1 to meet the following requirements:

- Require administrators to request access to VM1 before establishing a Remote Desktop connection.
- Limit access to VM1 from specific source IP addresses.
- Limit access to VM1 to a specific management port What should you configure?

- A. a network security group (NSG)
- B. Azure Active Directory (Azure AD) Privileged identity Management (PIM)
- C. Azure Front Door
- D. Microsoft Defender for Cloud

**Answer: D**

#### Explanation:

Reference:  
<https://docs.microsoft.com/en-us/azure/defender-for-endpoint>

**NEW QUESTION 37**

- (Exam Topic 3)

You have an on-premises server named Server1 that runs Windows Server and has internet connectivity. You have an Azure subscription. You need to monitor Server1 by using Azure Monitor.

Which resources should you create in the subscription, and what should you install on Server1? To answer, select the appropriate options in the answer area. NOTE: Each correct selection is worth one point.

In the subscription, create:

| An Azure Files storage account                           |
|--|
| A Log Analytics workspace                                |
| An Azure SQL database and a data collection rule         |
| An Azure Blob Storage account and a data collection rule |

On Server1, install:

| The Azure Monitor agent                   |
|---|
| The Analytics gateway                     |
| The Device Health Attestation server role |

- A. Mastered
- B. Not Mastered

**Answer:** A

**Explanation:**

Graphical user interface, text, application, email Description automatically generated

Reference:  
<https://docs.microsoft.com/en-us/windows-server/manage/windows-admin-center/azure/azure-monitor>

**NEW QUESTION 42**

- (Exam Topic 3)

You have an Azure subscription named sub1 and 500 on-premises virtual machines that run Windows Server. You plan to onboard the on-premises virtual machines to Azure Arc by running the Azure Arc deployment script

You need to create an identity that mil be used by the script to authenticate access to sub1. The solution must use the principle of least privilege.

How should you complete the command? To answer, select the appropriate options in the answer area. NOTE: Each correct selection is worth one point.

Answer Area

|   |                                      |   |
|---|--------------------------------------|---|
| <div> <div></div> <div> New-AzADAppCredential<br/> New-AzADServicePrincipal<br/> New-AzUserAssignedIdentity </div> </div> | -DisplayName 'Arc-for-servers' -Role | <div> <div></div> <div> 'Azure Connected Machine Onboarding'<br/> 'Virtual Machine Contributor'<br/> 'Virtual Machine User Login' </div> </div> |
|---|--------------------------------------|---|

- A. Mastered
- B. Not Mastered

**Answer:** A

**Explanation:**

Text Description automatically generated

Reference:  
<https://docs.microsoft.com/en-us/azure/azure-arc/servers/onboard-service-principal>

**NEW QUESTION 47**

- (Exam Topic 3)

You have on-premises file servers that run Windows Server as shown in the following table.

| Name    | Relevant folder        |
|---------|------------------------|
| Server1 | D:\Folder1, E:\Folder2 |
| Server2 | D:\Data                |

You have the Azure file shares shown in the following table.



| Name   | Location |
|--------|----------|
| share1 | East US  |
| share2 | East US  |

You add a Storage Sync Service named Sync1 and an Azure File Sync sync group named Group1. Group1 uses share1 as a cloud endpoint. You register Server1 and Server2 with Sync1. You add D:\Folder1 from Server1 as a server endpoint in Group1. For each of the following statements, select Yes if the statement is true. Otherwise, select No. NOTE: Each correct selection is worth one point.

| Statements  | Yes                   | No                    |
|---|-----------------------|-----------------------|
| You can add share2 as a cloud endpoint in Group1.                   | <input type="radio"/> | <input type="radio"/> |
| You can add E:\Folder2 from Server1 as a server endpoint in Group1. | <input type="radio"/> | <input type="radio"/> |
| You can add D:\Data from Server2 as a server endpoint in Group1.    | <input type="radio"/> | <input type="radio"/> |

- A. Mastered  
B. Not Mastered

Answer: A

**Explanation:**

Graphical user interface, text, application, email Description automatically generated

Reference:

<https://docs.microsoft.com/en-us/azure/storage/file-sync/file-sync-planning>

**NEW QUESTION 51**

- (Exam Topic 3)

You have an on-premises Active Directory Domain Services (AD DS) domain that syncs with an Azure Active Directory (Azure AD) tenant. You plan deploy 100 new Azure virtual machines that will run Windows Server. You need to ensure that each new virtual machine is joined to the AD DS domain. What should you use?

- A. Azure AD Connect  
B. a Group Policy Object (GPO)  
C. an Azure Resource Manager (ARM) template  
D. an Azure management group

Answer: C

**Explanation:**

Reference:

<https://www.ludovicmedard.com/create-an-arm-template-of-a-virtual-machine-automatically-joined-to-a-domain>

**NEW QUESTION 54**

- (Exam Topic 3)

Your network contains two Active Directory Domain Services (AD DS) forests named contoso.com and fabrikam.com. A two-way forest trust exists between the forests. Each forest contains a single domain. The domains contain the servers shown in the following table.

| Name    | Domain       | Description  |
|---------|--------------|--|
| Server1 | contoso.com  | Hosts a Windows Admin Center gateway   |
| Server2 | fabrikam.com | Hosts resources that will be managed remotely by using Windows Admin Center on Server1 |

You need to configure resources based constrained delegation so that the users in contoso.com can use Windows Admin Center on Server1 to connect to Server2. How should you complete the command? To answer, select the appropriate options in the answer area. NOTE: Each correct selection is worth one point.

Answer Area



- A. Mastered  
B. Not Mastered

Answer: A

**Explanation:**

Text Description automatically generated

Reference:

<https://docs.microsoft.com/en-us/windows-server/security/kerberos/kerberos-constrained-delegation-overview> <https://docs.microsoft.com/en-us/windows-server/security/kerberos/kerberos-constrained-delegation-overview>

us/powershell/module/activedirectory/set-adcomputer?view=windowsserver2022

NEW QUESTION 56

- (Exam Topic 3)

You have on-premises servers that run Windows Server as shown in the following table.

| Name    | Local content         |
|---------|-----------------------|
| Server1 | D:\Folder1\File1.docx |
| Server2 | D:\Data1\File3.docx   |

You have an Azure file share named share1 that stores two files named File2.docx and File3.docx. You create an Azure File Sync sync group that includes the following endpoints:

- > share
- > D:\Folder1 on Server1
- > D:\Data1 on Server2

For each of the following statements, select Yes if the statement is true. Otherwise, select No. NOTE: Each correct selection is worth one point.

| Statements   | Yes                   | No                    |
|--|-----------------------|-----------------------|
| You can create a file named File2.docx in D:\Folder1 on Server1. | <input type="radio"/> | <input type="radio"/> |
| You can create a file named File1.docx in D:\Data1 on Server2.   | <input type="radio"/> | <input type="radio"/> |
| File3.docx will sync to Server1.                                 | <input type="radio"/> | <input type="radio"/> |

- A. Mastered  
B. Not Mastered

Answer: A

Explanation:

Graphical user interface, text, application, email Description automatically generated

Reference:

<https://docs.microsoft.com/en-us/azure/storage/file-sync/file-sync-introduction>

NEW QUESTION 57

- (Exam Topic 3)

You have a file server named Server1 that runs Windows Server and contains the volumes shown in the following table.

| Name | File system |
|------|-------------|
| C    | NTFS        |
| D    | NTFS        |
| E    | REFS        |

On which volumes can you use BitLocker Drive Encryption (BitLocker) and disk quotas? To answer select the appropriate options in the answer area. NOTE Each correct selection is worth one point.

Answer Area

|              |   |
|--------------|---|
| BitLocker:   | <div><div>C only</div><div>D only</div><div>C and D only</div><div>D and E only</div><div>C, D, and E</div></div> |
| Disk quotas: | <div><div>C only</div><div>D only</div><div>C and D only</div><div>D and E only</div><div>C, D, and E</div></div> |

- A. Mastered  
B. Not Mastered

Answer: A

Explanation:

Table Description automatically generated

Reference:  
<https://docs.microsoft.com/en-us/windows-server/storage/refs/refs-overview>

#### NEW QUESTION 58

- (Exam Topic 3)

You have an Azure Active Directory Domain Services (Azure AD DS) domain. You create a new user named Admin1. You need Admin1 to deploy custom Group Policy settings to all the computers in the domain. The solution must use the principle of least privilege. What should you include in the solution? To answer, select the appropriate options in the answer area. NOTE: Each correct selection is worth one point

Add Admin1 to the following group:

|                             |
|-----------------------------|
|                             |
| AAD DC Administrators       |
| Domain Admins               |
| Group Policy Creator Owners |

Instruct Admin1 to apply the custom Group Policy settings by:

|  |
|--|
|  |
| Creating a new Group Policy Object (GPO) and linking the GPO to the domain |
| Modifying AADDC Computers GPO  |
| Modifying the default domain GPO   |

- A. Mastered
- B. Not Mastered

**Answer:** A

#### Explanation:

Graphical user interface, text, application Description automatically generated

Reference:  
<https://docs.microsoft.com/en-us/azure/active-directory-domain-services/manage-group-policy>

#### NEW QUESTION 61

- (Exam Topic 2)

You are planning the implementation Azure Arc to support the planned changes. You need to configure the environment to support configuration management policies. What should you do?

- A. Hybrid Azure AD join all the servers.
- B. Create a hybrid runbook worker in Azure Automation.
- C. Deploy the Azure Connected Machine agent to all the servers.
- D. Deploy the Azure Monitor agent to all the servers.

**Answer:** C

#### Explanation:

Reference:  
<https://docs.microsoft.com/en-us/azure/azure-arc/servers/plan-at-scale-deployment>

#### NEW QUESTION 62

- (Exam Topic 1)

You need to meet the technical requirements for VM3 On which volumes can you enable Data Deduplication?

- A. D and E only
- B. C, D, E, and F
- C. D only
- D. C and D only
- E. D, E, and F only

**Answer:** A

#### Explanation:

Reference:  
<https://docs.microsoft.com/en-us/windows-server/storage/data-deduplication/interop>

#### NEW QUESTION 67

- (Exam Topic 1)

You need to meet the technical requirements for VM2. What should you do?

- A. Implement shielded virtual machines.
- B. Enable the Guest services integration service.
- C. Implement Credential Guard.
- D. Enable enhanced session mode.

**Answer:** B

#### NEW QUESTION 70

- (Exam Topic 1)

You need to meet the technical requirements for User1. The solution must use the principle of least privilege. What should you do?

- A. Add Users1 to the Server Operators group in contoso.com.
- B. Create a delegation on contoso.com.
- C. Add Users1 to the Account Operators group in contoso.com.
- D. Create a delegation on OU3.

**Answer:** D

#### **Explanation:**

Reference:

<https://docs.microsoft.com/en-us/windows-server/identity/ad-ds/plan/delegating-administration-of-account-ous-a>

#### NEW QUESTION 72

.....

## THANKS FOR TRYING THE DEMO OF OUR PRODUCT

Visit Our Site to Purchase the Full Set of Actual AZ-800 Exam Questions With Answers.

We Also Provide Practice Exam Software That Simulates Real Exam Environment And Has Many Self-Assessment Features. Order the AZ-800 Product From:

<https://www.2passeasy.com/dumps/AZ-800/>

## Money Back Guarantee

### **AZ-800 Practice Exam Features:**

- \* AZ-800 Questions and Answers Updated Frequently
- \* AZ-800 Practice Questions Verified by Expert Senior Certified Staff
- \* AZ-800 Most Realistic Questions that Guarantee you a Pass on Your FirstTry
- \* AZ-800 Practice Test Questions in Multiple Choice Formats and Updatesfor 1 Year