

## 350-601 Dumps

# Implementing and Operating Cisco Data Center Core Technologies

<https://www.certleader.com/350-601-dumps.html>



**NEW QUESTION 1**

A customer needs a tool to take advantage of the CI/CD model to streamline its operation and optimize cost. The customer wants to integrate the solution with the cisco products it currently it currently uses, Including Cisco ACI networking and Cisco UCS servers. The solution should also provide on-premises Kubernetes and AppDynamics performance monitoring. Because of the security requirements, the solution not install a local client on products under management. which orchestration solution meets these requirements?

- A. Cisco APIC
- B. CISCO UCS director
- C. Cisco DCNM
- D. Cisco CloudCenter

**Answer:** D

**NEW QUESTION 2**

Which product includes prebuilt templates that can be used to customize fabric deployments?

- A. Cisco ACI
- B. Cisco UCS Manger
- C. Cisco data Center Network Manger
- D. Cisco Tetratation

**Answer:** C

**Explanation:**

<https://www.cisco.com/c/en/us/products/collateral/cloud-systems-management/prime-data-center-networkmanag>

[https://www.cisco.com/c/en/us/td/docs/switches/datacenter/sw/11\\_2\\_1/config\\_guide/lanfabric/b\\_dcnm\\_fabric\\_lan/template\\_usage.html](https://www.cisco.com/c/en/us/td/docs/switches/datacenter/sw/11_2_1/config_guide/lanfabric/b_dcnm_fabric_lan/template_usage.html)

**NEW QUESTION 3**

A company plans to migrate some of its services to the cloud. The company does not want to manage or control the underlying cloud infrastructure. It also wants to maintain control over the deployment of its applications and configuration settings of the application-hosting environment. Which cloud service model meets these requirements?

- A. Infrastructure as a Service
- B. Function as a Service
- C. Platform as a Service
- D. Software as a Service

**Answer:** C

**NEW QUESTION 4**

An engineer must configure a Cisco UCS domain for monitoring and management by the Cisco Intersight SaaS platform. After the setup is complete, administrators must have full control to configure the device through Cisco UCS Manager and Intersight. Which set of actions accomplishes this task?

- A. Configure Devce Connector Access Mode as Allow Control in Device Console Claim the device on Intersight as UCSM Managed Mode.
- B. Configure Device Connector Access Mode as Allow Control in Cisco UCS Manager Claim the device on intersightc as Intersight Managed Mode
- C. Configure Device Connector Access Moao as Allow Control in Device Consol
- D. Claim the device on intersight as Intersight Managed Mode
- E. Configure Device Connector Access Mode as Allow Control in Cisco UCS Manager Claim the device on intersight as UCSM Managed Mode
- F. Option A
- G. Option B
- H. Option C
- I. Option D

**Answer:** C

**NEW QUESTION 5**

Which feature must be enabled to support the use of JSON and XML encoding when a Cisco Nexus 7000 series switch is deployed?

- A. NX-API
- B. LLDP
- C. Open Agent Container
- D. Bash shell

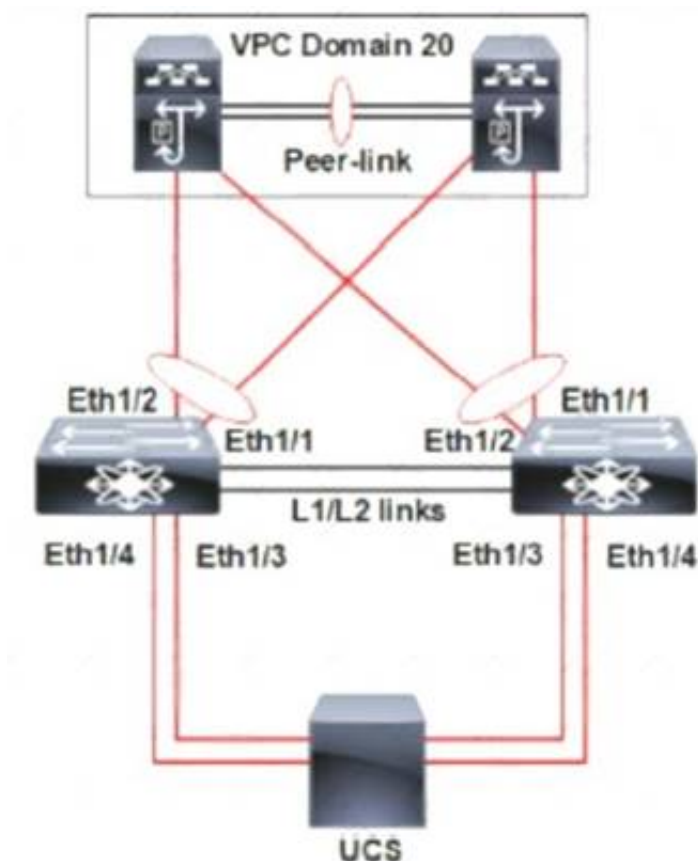
**Answer:** A

**Explanation:**

[https://www.cisco.com/c/en/us/td/docs/switches/datacenter/nexus7000/sw/programmability/guide/cisco\\_nexus7000\\_programmability\\_guide\\_8x/b-cisco-nexus7000-programmability-guide-8x\\_chapter\\_011.html](https://www.cisco.com/c/en/us/td/docs/switches/datacenter/nexus7000/sw/programmability/guide/cisco_nexus7000_programmability_guide_8x/b-cisco-nexus7000-programmability-guide-8x_chapter_011.html)

**NEW QUESTION 6**

Refer to the exhibit.



A pair of Cisco Nexus switches form a vPC. A new chassis is added to the pre-existing Cisco UCS domain. A new chassis must be discovered, and all links from the chassis to the LAN network must be established. Which set of actions accomplishes these requirements?

- ☐ Set the chassis discovery policy action to four links.  
Configure Eth1/3 and Eth1/4 as server ports.  
Acknowledge the chassis.
- ☒ Set the chassis discovery policy action to four links.  
Configure Eth1/1 and Eth1/2 as uplink Fibre Channel ports.  
Set the link group preference to None.
- ☐ Set the chassis discovery policy action to one link.  
Configure Eth1/1 and Eth1/2 as uplink Ethernet ports.  
Set the link group preference to Port Channel.
- ☐ Set the chassis discovery policy action to one link.  
Configure Eth1/3 and Eth1/4 as server ports.  
Acknowledge the chassis.

- A. Option A
- B. Option B
- C. Option C
- D. Option D

**Answer: C**

#### NEW QUESTION 7

What is a recommended design choice in a topology for multipathing iSCSI traffic?

- A. single initiator to dual targets
- B. initiators and targets in separate subnets
- C. dual initiators to a single target with bonded interfaces
- D. two NICs bonded together on the initiator

**Answer: A**

#### Explanation:

[https://www.cisco.com/c/en/us/td/docs/switches/datacenter/nexus1000/sw/4\\_2\\_1\\_s\\_v\\_1\\_5\\_1/system\\_management/configuration/guide/n1000v\\_system/n1000v\\_system\\_13iscsi.html#wp1052813](https://www.cisco.com/c/en/us/td/docs/switches/datacenter/nexus1000/sw/4_2_1_s_v_1_5_1/system_management/configuration/guide/n1000v_system/n1000v_system_13iscsi.html#wp1052813)

#### NEW QUESTION 8

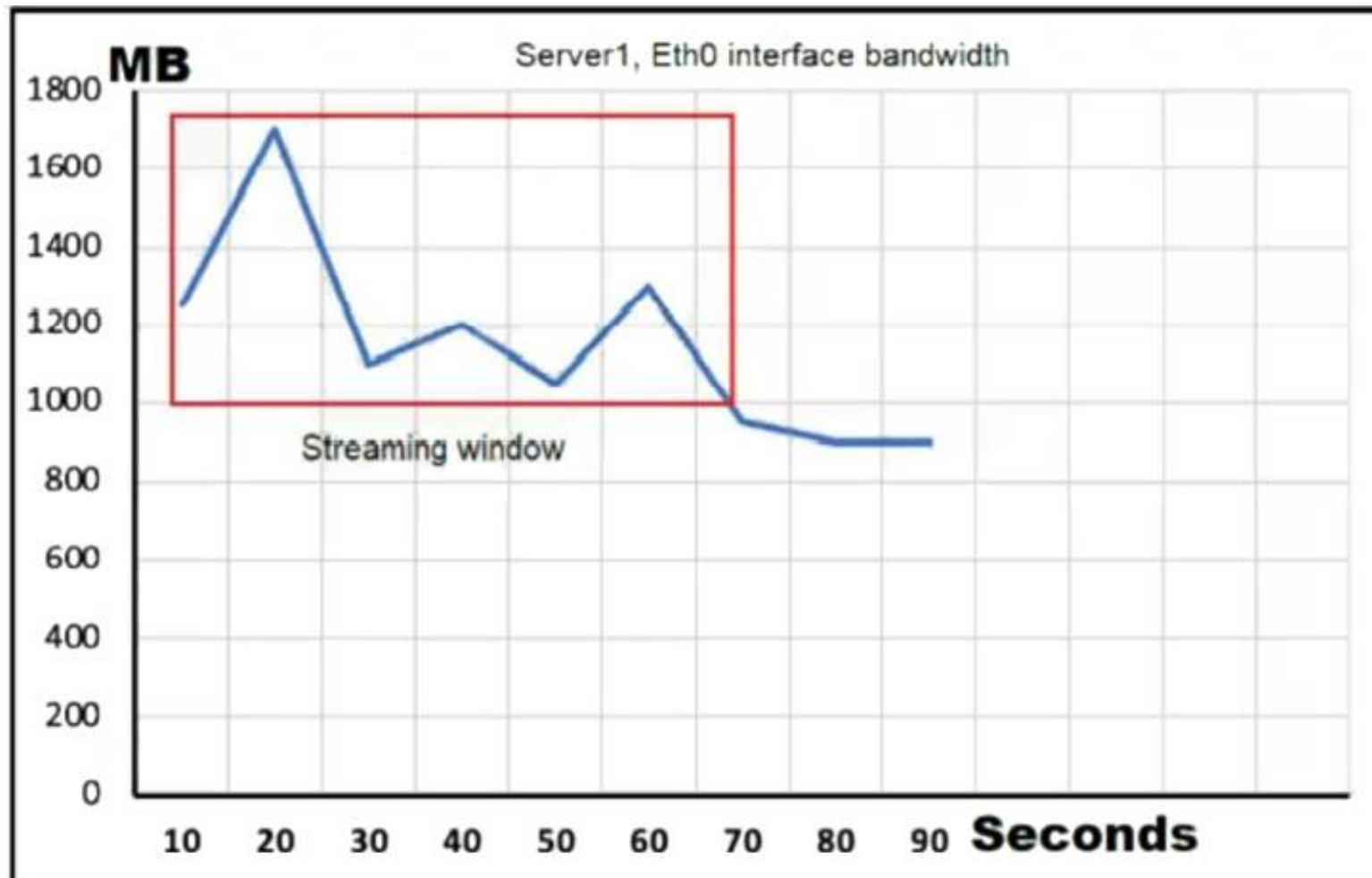
Which solution provides remote and direct file-level access to users and systems?

- A. direct-attached storage
- B. Fibre Channel over Ethernet
- C. storage area network
- D. network-attached storage

**Answer: D**

#### NEW QUESTION 9

Refer to the exhibit.



Server1 is connected to a Cisco Nexus 9000 Series Switch via a 1-Gb port channel. The storm control is applied to the Eth0 device with a zero percent value. What does the switch do to traffic that traverses the switch interfaces during the streaming window that exceeds the bandwidth of the interfaces?

- A. forwards all traffic
- B. forwards half of the traffic
- C. suppresses all traffic
- D. drops all of the excess traffic

**Answer: B**

#### NEW QUESTION 10

An engineer is implementing an import operation in Cisco UCS Manager. What is the impact of performing this operation?

- A. A configuration can be imported from a higher release to a lower release.
- B. Information can be modified on the management plane only.
- C. Only a configuration file that was exported from the same Cisco UCS Manager can be imported.
- D. An import operation can be scheduled.

**Answer: B**

#### Explanation:

The import function is available for all configuration, system configuration, and logical configuration files. You can perform an import while the system is up and running. An import operation modifies information on the management plane only. Some modifications caused by an import operation, such as a change to a vNIC assigned to a server, can cause a server reboot or other operations that disrupt traffic.

[https://www.cisco.com/en/US/docs/unified\\_computing/ucs/sw/gui/config/guide/141/UCSM\\_GUI\\_Configuration](https://www.cisco.com/en/US/docs/unified_computing/ucs/sw/gui/config/guide/141/UCSM_GUI_Configuration)

#### NEW QUESTION 10

A network administrator is creating a custom Django self-service portal that runs on a Linux server to automate the creation of new VLANs on Cisco UCS Manager. Which feature must be installed and configured on the server?

- A. Cisco ucs Powertool Suite
- B. Cisco DNA Center API
- C. Cisco AppDynamics
- D. Cisco UCS Python SDK

**Answer: C**

#### NEW QUESTION 14

A new employee must be granted access to add VLANs into an existing Cisco UCS Manager and configure NTP synchronization with date and time zone settings. Which two privileges must be granted to the employee to complete the task? (Choose two.)

- A. Service Profile Compute (ls-compute)
- B. Ext LAN Config (ext-lan-security)
- C. Service Profile Network Policy (ls-network-policy)
- D. Service Profile Config (ls-config)
- E. Ext LAN Policy (ext-lan-policy)

**Answer: BE**

#### Explanation:

[https://www.cisco.com/c/en/us/td/docs/unified\\_computing/ucs/ucs-manager/Reference-Docs/Privileges/4-1/b-U](https://www.cisco.com/c/en/us/td/docs/unified_computing/ucs/ucs-manager/Reference-Docs/Privileges/4-1/b-U)

NTP can be configured only with EXT LAN Security. VLAN can be added using the following privileges:

- Ext Lan Config (ext-lan-config)
- Ext Lan Policy (ext-lan-policy)

service profiles will add VLANs to vNICs only if they are configured to UCS manager. So service profile is not valid solution.

#### NEW QUESTION 19

What is a feature of NFS?

- A. role-based access control
- B. Kerberos-based security model
- C. block-based file access
- D. zone-based access control

**Answer: B**

#### Explanation:

<https://www.cisco.com/c/en/us/support/docs/security-vpn/kerberos/16087-1.html#modifiednfs>

#### Kerberos Security Implications of the Modified NFS

This implementation is not completely secure. For starters, user data is still sent across the network in an unencrypted, and therefore interceptable, form. The low-level, per-transaction authentication is based on a <CLIENT-IP-ADDRESS, CLIENT-UID> pair provided unencrypted in the request packet. This information could be forged and thus security compromised. However, it should be noted that only while a user is actively using her/his files (that is, while logged in) are valid mappings in place and therefore this form of attack is limited to when the user in question is logged in. When a user is not logged in, no amount of IP address forgery will permit unauthorized access to her/his files.

#### NEW QUESTION 22

Which two methods are available to Manage an ACI REST API session authentication when a user is unauthenticated?

- A. POST to aaaLogin
- B. POST to aaaUserLogin
- C. GET aaaRefresh
- D. GET to aaaListDomains
- E. DELETE to aaaLogout

**Answer: AC**

#### Explanation:

These API methods enable you to manage session authentication:

aaaLogin —Sent as a POST message, this method logs in a user and opens a session. The message body contains an aaa:User object with the name and password attributes, and the response contains a session token and cookie. If multiple AAA login domains are configured, you must prepend the user's name with apic: domain\\ .

aaaRefresh —Sent as a GET message with no message body or as a POST message with the aaaLogin message body, this method resets the session timer. The response contains a new session token and cookie.

aaaLogout —Sent as a POST message, this method logs out the user and closes the session. The message body contains an aaa:User object with the name attribute. The response contains an empty data structure.

aaaListDomains —Sent as a GET message, this method returns a list of valid AAA login domains. You can send this message without logging in.

[https://www.cisco.com/c/en/us/td/docs/switches/datacenter/aci/apic/sw/2-x/rest\\_cfg/2\\_1\\_x/b\\_Cisco\\_APIC\\_REST\\_API\\_Configuration\\_Guide/b\\_Cisco\\_APIC\\_REST\\_API\\_Configuration\\_Guide\\_chapter\\_01.html](https://www.cisco.com/c/en/us/td/docs/switches/datacenter/aci/apic/sw/2-x/rest_cfg/2_1_x/b_Cisco_APIC_REST_API_Configuration_Guide/b_Cisco_APIC_REST_API_Configuration_Guide_chapter_01.html)

#### NEW QUESTION 25

Where does the witness VM reside in a Cisco Hyperflex Edge deployment?

- A. Windows application
- B. Hyper Rex Data Platform
- C. Cisco Intersight
- D. local HyperFlex datastore

**Answer: C**

#### NEW QUESTION 30

A storage administrator notices an increasing number of storage targets that unexpectedly reach capacity, causing periodic service interruptions. The administrator must now create and submit a daily report of the environment that shows the status of the storage targets with the highest capacities. Which solution provides this information?

- A. Nagios Core with OpManager
- B. Cisco DCNM with SAN Insight
- C. SolarWinds with Slow Drain Analysis
- D. Cisco Intersight with Slow Drain Analysis

**Answer: D**

#### NEW QUESTION 33

What is required for using puppet in a Cisco NX-OS environment?



- A. Open Agent Container
- B. XML management interface
- C. NX-API
- D. OpenNP

**Answer:** A

#### NEW QUESTION 35

A network administrator attempts to automate the provisioning of several new Cisco Nexus switches. The administrator prepares a bootstrap configuration script for the task. Due to the number of switches a zero-touch provisioning solution is preferred. Additionally, some switches arrive with outdated software and should be automatically upgraded as part of the provisioning workflow. Which solution meets the requirements?

- A. DHCP
- B. Ansible
- C. NX-API
- D. POAP

**Answer:** C

#### NEW QUESTION 38

An engineer must configure a Cisco UCS blade system that is managed by Cisco UCS Manager. All four connected interfaces between the blade system and the fabric interconnects must be used. Additionally, the connectivity must tolerate any link failure between the I/O module and the fabric interconnects. Which action accomplishes these requirements?

- A. Configure port aggregation with LACP policy set to default
- B. Configure Firmware Auto Sync Server policy to Auto Acknowledge
- C. Configure Link Group Preference to Port Channel.
- D. Configure chassis/FEX discovery pokey action to four links

**Answer:** D

#### NEW QUESTION 43

The engineer must configure SPAN on a Cisco Nexus 5000 Series switch to get a capture of the traffic from these applications for an in-depth packet analysis. Which two characteristics must be considered? (Choose two.)

- A. The Ethernet, FC, vFC, port channel, SAN port channel can be used as SPAN source ports.
- B. The rx/tx option is available for VLAN or VSAN SPAN sessions.
- C. SPAN source port can be monitored in multiple SPAN sessions.
- D. Only Ethernet, FC, vFC, port channel port types can be a destination SPAN port.
- E. A SPAN source port cannot be a destination SPAN port.

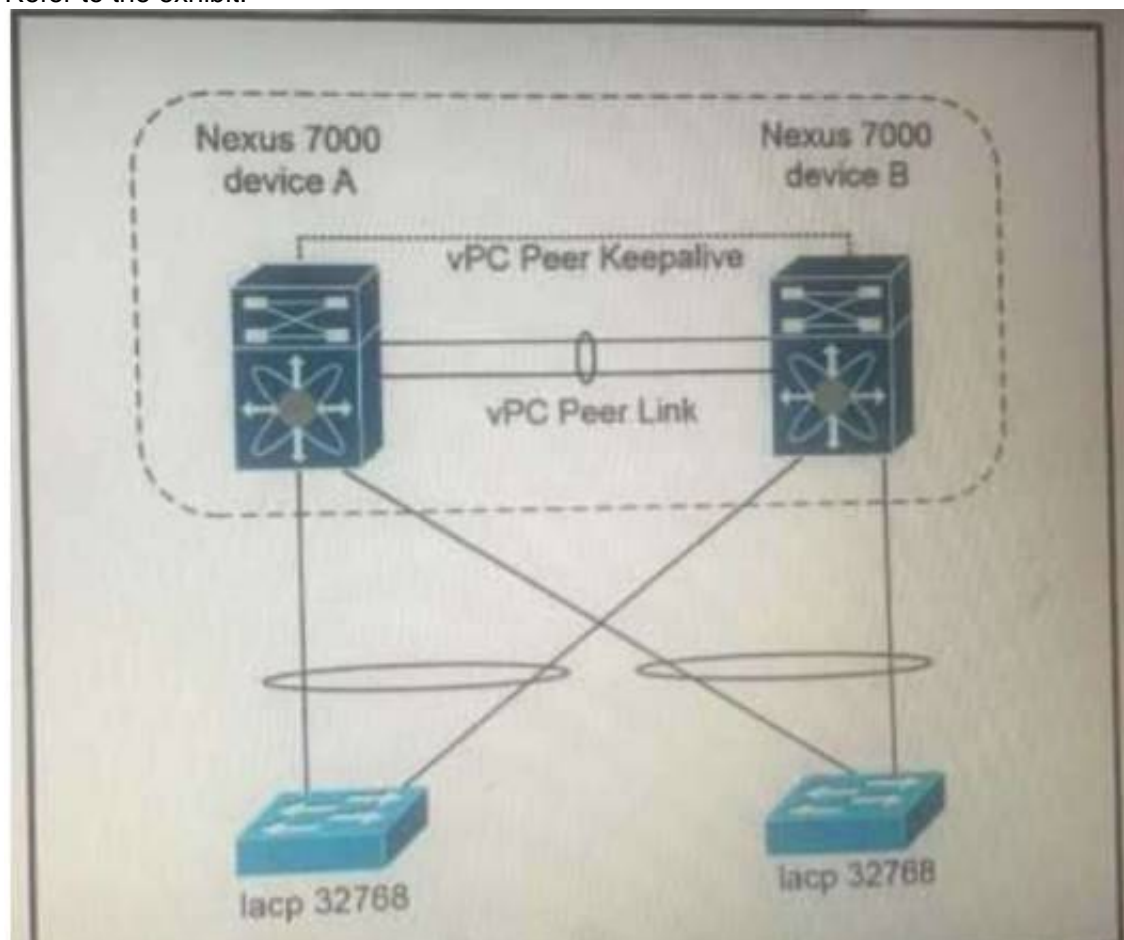
**Answer:** AE

#### Explanation:

[https://www.cisco.com/en/US/docs/switches/datacenter/nexus5000/sw/configuration/guide/cli\\_rel\\_4\\_1/Cisco\\_N](https://www.cisco.com/en/US/docs/switches/datacenter/nexus5000/sw/configuration/guide/cli_rel_4_1/Cisco_N)

#### NEW QUESTION 48

Refer to the exhibit.



Which configuration ensure that the cisco Nexus 7000 series switches are the primary devices for LACP?

- A. `N7K_A(config-vpc-domain)# system-priority 4000`  
`N7K_B(config-vpc-domain)# system-priority 4000`
- B. `N7K_A(config-vpc-domain)# system-priority 100`  
`N7K_B(config-vpc-domain)# system-priority 200`
- C. `N7K_A(config-vpc-domain)# system-priority 32768`  
`N7K_B(config-vpc-domain)# system-priority 32768`
- D. `N7K_A(config-vpc-domain)# role priority 1`  
`N7K_B(config-vpc-domain)# role priority 2`

- A. Option A  
B. Option B  
C. Option C  
D. Option D

**Answer:** C

#### NEW QUESTION 49

A customer data center is configured for distribution of user roles, call home, and NTP. The data center was split into two geographically separate locations called DC1 and DC2. The requirement is for the user role configurations to be distributed in DC1 and for NTP and call home features to be constrained to DC2. Which two configuration sets must be used to meet these requirements? (Choose two.)

- A. `! On Data Center 1`  
`configure terminal`  
`cfs 1`  
`roles`  
`aaa`
- B. `! On Data Center 1`  
`configure terminal`  
`cfs region 1`  
`ntp`  
`callhome`
- C. `! On Data Center 1`  
`configure terminal`  
`cfs 1`  
`ntp`  
`callhome`
- D. `! On Data Center 2`  
`configure terminal`  
`cfs region 2`  
`roles`
- E. `! On Data Center 2`  
`configure terminal`  
`cfs 2`  
`roles`  
`aaa`

- A. Option A  
B. Option B  
C. Option C  
D. Option D  
E. Option E

**Answer:** CD

#### Explanation:

This example shows how to move the Call Home application to CFS region 2:

```
switch# config t

switch(config)# cfs region 2

switch(config-cfs-region)# callhome

switch(config-cfs-region)# show cfs region name callhome
```

[https://www.cisco.com/c/en/us/td/docs/switches/datacenter/sw/4\\_2/nx-os/system\\_management/configuration/guide/sm\\_nx\\_os\\_cli/sm\\_2cfs.html](https://www.cisco.com/c/en/us/td/docs/switches/datacenter/sw/4_2/nx-os/system_management/configuration/guide/sm_nx_os_cli/sm_2cfs.html)

**NEW QUESTION 53**

Which method must a network engineer use to upgrade the BIOS firmware of a Cisco UCS standalone C-Series rack-mount server?

- A. Use the Cisco host upgrade utility.
- B. Use the Cisco hardware upgrade utility.
- C. Use the Cisco host firmware policy.
- D. Use the U-ACPI Interface.

**Answer:** A

**NEW QUESTION 55**

Which two actions must be taken to directly connect a Fibre Channel storage array to a Cisco UCS domain? (Choose two.)

- A. Configure a new VSAN
- B. Create a new vHBA dedicated to the storage array
- C. Configure a Fibre Channel port channel
- D. Create a Storage Connection Policy
- E. Configure the Fibre Channel port as a Fibre Channel storage port

**Answer:** AE

**NEW QUESTION 58**

Due to a newly announced security advisory, a company has been informed that they must update the configuration of 500 network devices that are deployed in their network. The engineering team must assist the operations team to prepare for this update. The operations team does not have direct access to the network devices and must log in via a Linux server. This is the first time that the team is making a network-wide configuration and must change all devices without first installing additional software on the network devices. The operations team is unfamiliar with automation and scripting technologies. Which automation tool must be used to accomplish this goal?

- A. Chef
- B. Ansible
- C. Puppet
- D. Saltstack

**Answer:** B

**NEW QUESTION 59**

An engineer is configuring AAA authentication on an MDS 9000 switch. The LDAP server is located under the IP 10.10.2.2. The data sent to the LDAP server should be encrypted. Which command should be used to meet these requirements?

- A. ldap-server host 10.10.2.2 enable-ssl
- B. ldap-server 10.10.2.2 port 443
- C. ldap server host 10.10.2.2 key SSL\_KEY
- D. ldap-server 10.10.2.2 key SSL\_KEY

**Answer:** A

**NEW QUESTION 63**

Port security is statically configured on a Cisco Nexus 7700 Series switch and F3 line card. The switch is configured with an Advanced Services license. Which two actions delete secured MAC addresses from the interface? (Choose Two)

- A. The address must be removed from the configuration.
- B. The address must reach the age limit that is configured for the interface.
- C. The interface must be converted to a routed port.
- D. The device must be restarted manually.
- E. Shutdown and then no shutdown must be run on the interface.

**Answer:** AC

**Explanation:**

[https://www.cisco.com/c/en/us/td/docs/switches/datacenter/sw/6\\_x/nx-os/security/configuration/guide/b\\_Cisco\\_Static\\_Method](https://www.cisco.com/c/en/us/td/docs/switches/datacenter/sw/6_x/nx-os/security/configuration/guide/b_Cisco_Static_Method)

The static learning method allows you to manually add or remove secure MAC addresses to the running configuration of an interface. If you copy the running configuration to the startup configuration, static secure MAC addresses are unaffected if the device restarts.

A static secure MAC address entry remains in the configuration of an interface until one of the following events occurs:

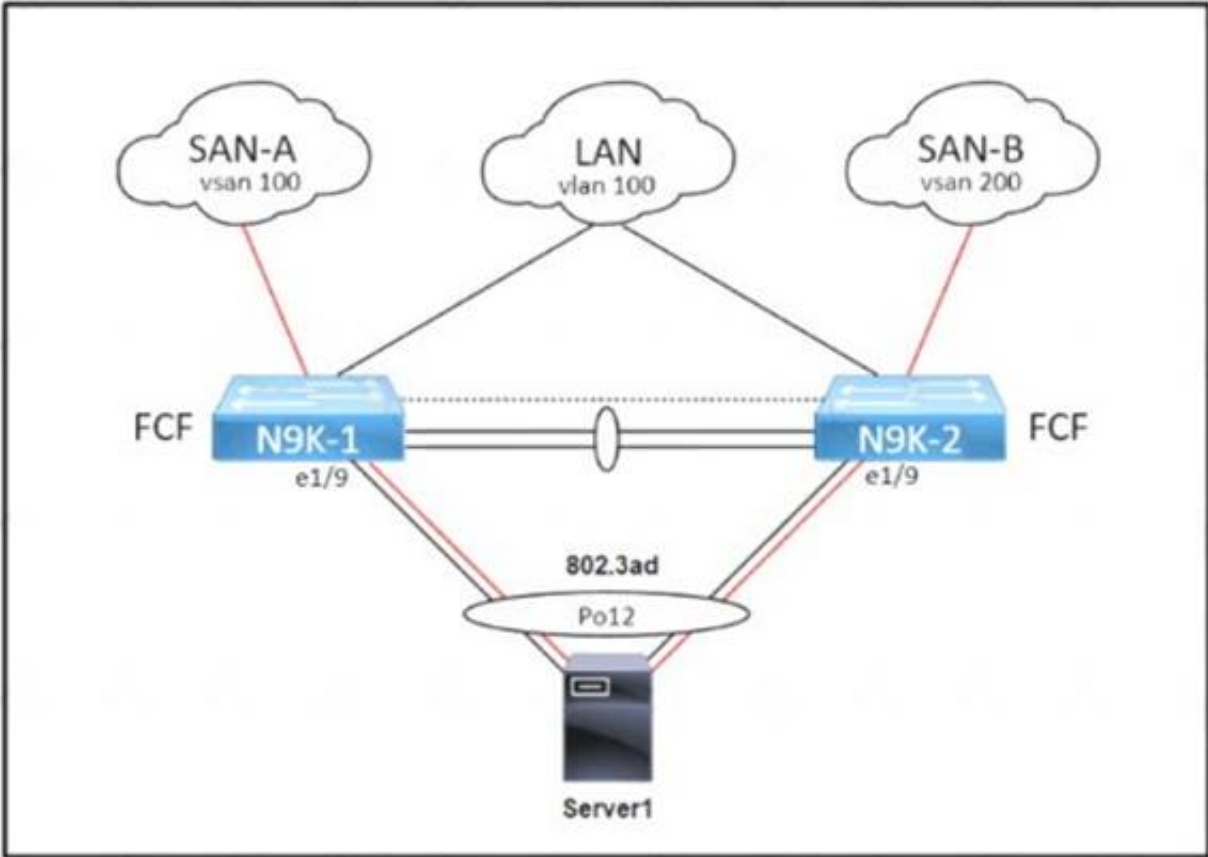
- You explicitly remove the address from the configuration.
- You configure the interface to act as a Layer 3 interface.

Adding secure addresses by the static method is not affected by whether dynamic or sticky address learning is enabled.

**NEW QUESTION 68**

Refer to the exhibit.





An administrator must complete the unified fabric configuration between Server1 and a pair of Cisco Nexus 9000 Series Switches Drag and drop the code snippets from the right onto the blanks in the code on the left to complete the N9K-1 configuration Snippets are used more than once.

```
service-policy type qos input default-fcoe-in-policy
int [ ]
switchport trunk allowed [ ] 1, 100
int [ ]
bind interface [ ]
no shut
```

vlan

vfc 1

po12

- A. Mastered
- B. Not Mastered

Answer: A

Explanation:

Po12  
Vlan Vfc1 Po12

NEW QUESTION 70

An engineer mus! send JSON encoded telemetry data to an external collector. The transport mechanism must prevent tampennng or forgery of the data. Which protocol accomplishes this goal?

- A. GPB
- B. HTTP
- C. gRPC
- D. DTLS

Answer: B

NEW QUESTION 74

An engineer must shut down the Ethernet 1/2 interface when the Ethernet 4/5 interface state is down. Drag and drop the CLI commands from the bottom onto the blanks in the exhibit to implement this EEM. Not all commands are used.

```
switch# configure terminal
switch(config)# track 1 
switch(config-track)# end

switch(config)# event manager applet track_4_5_down
switch(config-applet)# event track 1 state down
switch(config-applet)# action 1 syslog msg EEM applet
track_4_5_down shutting down port eth1/2 due to eth4/5
being down
switch(config-applet)# action 2 cli conf term
switch(config-applet)# action 3 cli 
switch(config-applet)# action 4 cli 
switch(config-applet)# end
```

- A. Mastered
- B. Not Mastered

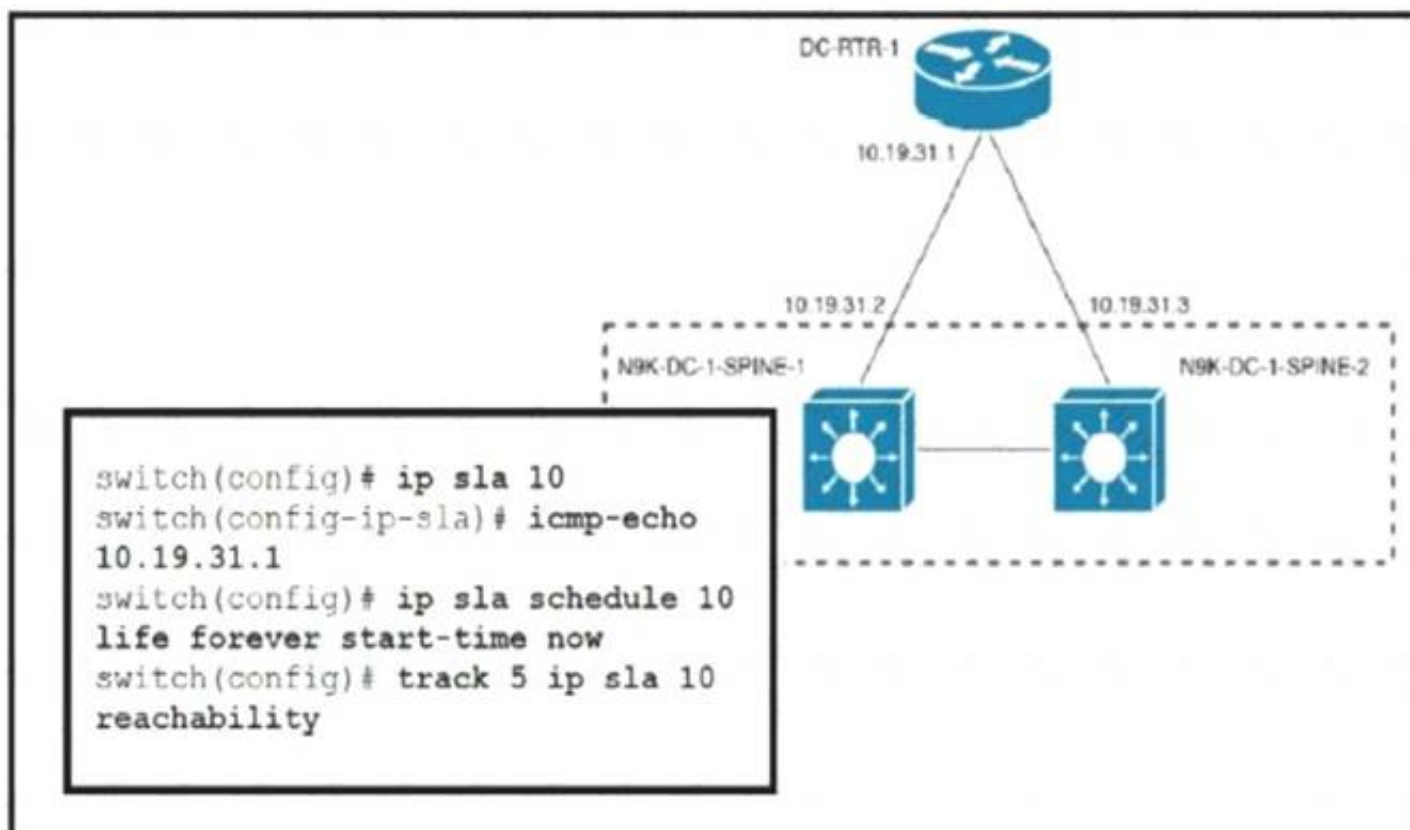
**Answer:** A

**Explanation:**

Text Description automatically generated

**NEW QUESTION 75**

Refer to the exhibit.



An engineer must invoke a Python script that alerts the operations team when the router DC-RTR-1 becomes unreachable. Which configuration set accomplishes this task?

```
track 3 ip sla 10 reachability
event name GATEWAY-DOWN
event state down
action cli command routerdown.py

scheduler job name ROUTER-DOWN
job track 9 state down
action 1.0 cli source routerdown.py
schedule 10

event scheduler name DOWN-ROUTER
event track 2 state 1 not up
event action 1.0 command source routerdown.py
event start 0:00 repeat 0:05

event manager applet ROUTER-DOWN-SLA
event track 5 state down
action 1.0 event-default
action 2.0 cli command source routerdown.py
```

- A. Option A
- B. Option B
- C. Option C
- D. Option D

**Answer:** D

#### NEW QUESTION 76

An engineer must configure a VXLAN routing on a cisco Nexus 9000 series Switch. The engineer requires a solution where all the leaf switches have the same gateway MAC and IP address. Which configuration set accomplishes this task?

A)

```
NX9K(config)# fabric forwarding anycast-gateway-mac AA:BB:AA:BB:AA:BB
NX9K(config)# interface VLAN-interface-name
NX9K(config-if)# fabric forwarding mode anycast-gateway
```

B)

```
NX9K(config)# fabric forwarding anycast-gateway-mac AA:BB:AA:BB:AA:BB
NX9K(config)# interface VLAN-interface-name
NX9K(config-if)# vrf member vrf-name
NX9K(config-if)# fabric forwarding mode anycast-gateway
```

C)

```
NX9K(config)# install feature-set fabric
NX9K(config)# feature-set fabric
NX9K(config)# fabric forwarding anycast-gateway-mac AA:BB:AA:BB:AA:BB
NX9K(config)# interface VLAN-interface-name
NX9K(config-if)# vrf member vrf-name
NX9K(config-if)# fabric forwarding mode anycast-gateway
```

D)

```
NX9K(config)# install feature-set fabric
NX9K(config)# feature-set fabric
NX9K(config)# fabric forwarding anycast-gateway-mac AA:BB:AA:BB:AA:BB
NX9K(config)# interface VLAN-interface-name
NX9K(config-if)# fabric forwarding mode anycast-gateway
```

- A. Option A
- B. Option B
- C. Option C
- D. Option D

**Answer:** C

#### NEW QUESTION 77

Where is the witness deployed in a two-node Cisco HyperFlex Edge deployment?

- A. to the HyperFlex Edge two-node cluster
- B. to an additional server with network access to HyperFlex Edge
- C. to a third-party cloud provider
- D. to Cisco Intersight

**Answer:** D

**Explanation:**



The Cisco HyperFlex Edge invisible cloud witness is only required for 2-node HX Edge deployments. correct, it has to connect to Intersight as it is a CLOUD invisible witness as per the document shared: The Cisco HyperFlexEdge invisiblecloud witnessis only requiredfor 2-nodeHX Edge deployments. The witness does not require any additional infrastructure, setup, configuration, backup, patching ,or management of any kind. This feature is automatically configured as part of a 2-node Hyper Flex Edge installation. Outbound access at the remote site must be present for connectivity to Intersight (eitherIntersight.com or to the Intersight Virtual Appliance). HyperFlexEdge 2-nodeclusters cannot operate without this connectivity in place  
[https://www.cisco.com/c/en/us/td/docs/hyperconverged\\_systems/HyperFlex\\_HX\\_DataPlatformSoftware/Edge\\_Deployment\\_Guide/b\\_HyperFlex\\_Edge\\_Deployment\\_Guide\\_4\\_0.pdf](https://www.cisco.com/c/en/us/td/docs/hyperconverged_systems/HyperFlex_HX_DataPlatformSoftware/Edge_Deployment_Guide/b_HyperFlex_Edge_Deployment_Guide_4_0.pdf)

#### NEW QUESTION 82

When deploying a Cisco HyperFlex edge with a pair of switches, what is the minimum number of interfaces in trunk mode required on each HX node?

- A. 1
- B. 2
- C. 4
- D. 6

**Answer: B**

#### NEW QUESTION 87

Drag and drop the NAS and NFS concepts from the left onto the definitions on the right.

Data storage and file sharing requests are sent and received.	NFS
The protocol is regularly used on Linux and UNIX systems.	
Software is deployed on a lightweight OS that is embedded in the hardware.	NAS
The vendor-agnostic protocol is supported on any hardware and OS.	

- A. Mastered
- B. Not Mastered

**Answer: A**

#### Explanation:

NFS

Data storage and file sharing requests are sent and received The protocol is regularly used on Linux segment

NAS

Software is deployed on a lightweight OS that is embedded in the hardware The vendor-agnostic protocol is supported on any hardware and OS

#### NEW QUESTION 89

Refer to the exhibit.

```
CISCO-UCS-A# scope org /
CISCO-UCS-A /org* # create service-profile Cisc01 instance
CISCO-UCS-A /org/service-profile* # set bios-policy bios1
CISCO-UCS-A /org/service-profile* # set boot-policy boot1
CISCO-UCS-A /org/service-profile* # set ext-mgmt-ip-state none
CISCO-UCS-A /org/service-profile* # set host-fw-policy ipmi-user987
CISCO-UCS-A /org/service-profile* # set identity dynamic-uuid derived
CISCO-UCS-A /org/service-profile* # set ipmi-access-profile ipmi1
CISCO-UCS-A /org/service-profile* # set local-disk-policy local1
CISCO-UCS-A /org/service-profile* # set maint-policy maint1
CISCO-UCS-A /org/service-profile* # set mgmt-fw-policy mgmt1
CISCO-UCS-A /org/service-profile* # set power-control-policy power1
CISCO-UCS-A /org/service-profile* # set scrub-policy scrub1
CISCO-UCS-A /org/service-profile* # set sol-policy sol1
CISCO-UCS-A /org/service-profile* # set stats-policy stats1
CISCO-UCS-A /org/service-profile* # set user-label Cisco
CISCO-UCS-A /org/service-profile* # vcon-policy vconnpolicy
CISCO-UCS-A /org/service-profile* # commit-buffer
CISCO-UCS-A /org/service-profile #
```

What is a characteristic presented in the service profile of the UUID?

- A. based on the hardware
- B. vendor assigned



- C. unique system generated
- D. allocated from a UUID pool

**Answer:** A

**Explanation:**

there is no parameter for 'set identity dynamic-uuid' to specify a pool name - you can only state "derived" or a 32 hex character string (128-bits, therefore full UUID).

```
ucspe /org/service-profile # set identity dynamic-uuid derived Derived
```

```
FFFFFFFF-FFFF-FFFF-FFFF-FFFFFFFFFFFFFF Dynamic UUID
```

The documentation, as usual for Cisco, is poor. Shagua references old v1.4.1 documentation but it's the same in 4.1. It's inaccurate as uuid-pool should now read uuid-suffix-pool. You can use UCSPE to check the CLI with contextual help.

```
ucspe /org/service-profile # set identity dynamic-uuid Dynamic UUID dynamic-wwnn Dynamic WWNN uuid-suffix-pool UUID Suffix Pool wwnn-pool WWNN Pool
```

If set identity dynamic-uuid only gives us the option of a static UUID or the parameter "derived", and set identity uuid-suffix-pool is the option to assign a pool... I would suggest that the most logical answer here is

- derived from the hardware. [https://www.cisco.com/en/US/docs/unified\\_computing/ucs/sw/cli/config/guide/1.4.1/CLI\\_Config\\_Guide\\_1\\_4\\_1](https://www.cisco.com/en/US/docs/unified_computing/ucs/sw/cli/config/guide/1.4.1/CLI_Config_Guide_1_4_1)

**NEW QUESTION 93**

A network engineer must enable port security on all cisco MDS series switches in the fabric. The requirement is to avoid the extensive manual configuration of the switch ports. Which action must be taken to meet these requirements?

- A. Activate CFS distribution and the auto-learning port security feature.
- B. Activate CFS distribution and file auto-learning port security feature on a per-VSAN basis.
- C. Enable the auto-learning port security feature on a per-VSAN basis.
- D. Enable the auto-learning port security feature.

**Answer:** B

**Explanation:**

You can instruct the switch to automatically learn (auto-learn) the port security configurations over a specified period. This feature allows any switch in the Cisco MDS 9000 Family to automatically learn about devices and switches that connect to it. Use this feature when you activate the port security feature for the first time as it saves tedious manual configuration for each port. You must configure auto-learning on a per-VSAN basis.

[https://www.cisco.com/en/US/docs/storage/san\\_switches/mds9000/sw/rel\\_3\\_x/configuration/guides/fm\\_3\\_3\\_1/p](https://www.cisco.com/en/US/docs/storage/san_switches/mds9000/sw/rel_3_x/configuration/guides/fm_3_3_1/p)

**NEW QUESTION 94**

Multiple roles are applied to a user on the Cisco MDS 9000 Series Switch. Which statement is true?

- A. Any commands that have conflicting settings between roles are denied.
- B. Access to a command takes priority over being denied access to a command.
- C. The first role assigned takes precedence over subsequent roles.
- D. The last role assigned takes precedence over previous roles.

**Answer:** B

**Explanation:**

Graphical user interface, text, application Description automatically generated



**Note** If you belong to **multiple roles**, you can execute a union of all the commands permitted by these roles. Access to a command takes priority over being **denied access** to a command. For example, suppose you belong to a TechDocs group and you were denied access to configuration commands. However, you also belong to the engineering group and have access to configuration commands. In this case, you will have access to configuration commands.

[https://www.cisco.com/c/en/us/td/docs/switches/datacenter/mds9000/sw/5\\_0/configuration/guides/sec/nxos/sec/clcfigur.html](https://www.cisco.com/c/en/us/td/docs/switches/datacenter/mds9000/sw/5_0/configuration/guides/sec/nxos/sec/clcfigur.html)

[https://www.cisco.com/c/en/us/td/docs/switches/datacenter/mds9000/sw/8\\_x/config/security/cisco\\_mds9000\\_security\\_config\\_guide\\_8x/configuring\\_users\\_and\\_common\\_roles.html](https://www.cisco.com/c/en/us/td/docs/switches/datacenter/mds9000/sw/8_x/config/security/cisco_mds9000_security_config_guide_8x/configuring_users_and_common_roles.html)

**NEW QUESTION 96**

Drag and drop the network assurance concepts from the left onto the corresponding benefits on the right.

Cisco Tetration	allows close to real-time data monitoring
Data Management Engine	confirms that the network operates consistently with business requirements
Cisco Network Assurance Engine	offers overall protection and enables analysis of the network in real time to identify security incidents faster
Streaming Telemetry	allows the characteristics to be presented as object properties

- A. Mastered  
B. Not Mastered

**Answer:** A

**Explanation:**

Diagram Description automatically generated

**NEW QUESTION 98**

An engineer is duplicating an existing Cisco UCS setup at a new site. What are two characteristics of a logical configuration backup of a Cisco UCS Manager database? (Choose two.)

- A. contains the AAA and RBAC configurations  
B. contains a file with an extension.tgz that stores all of the configurations  
C. contains the configuration organizations and locales  
D. contains all of the configurations  
E. contains the VLAN and VSAN configurations

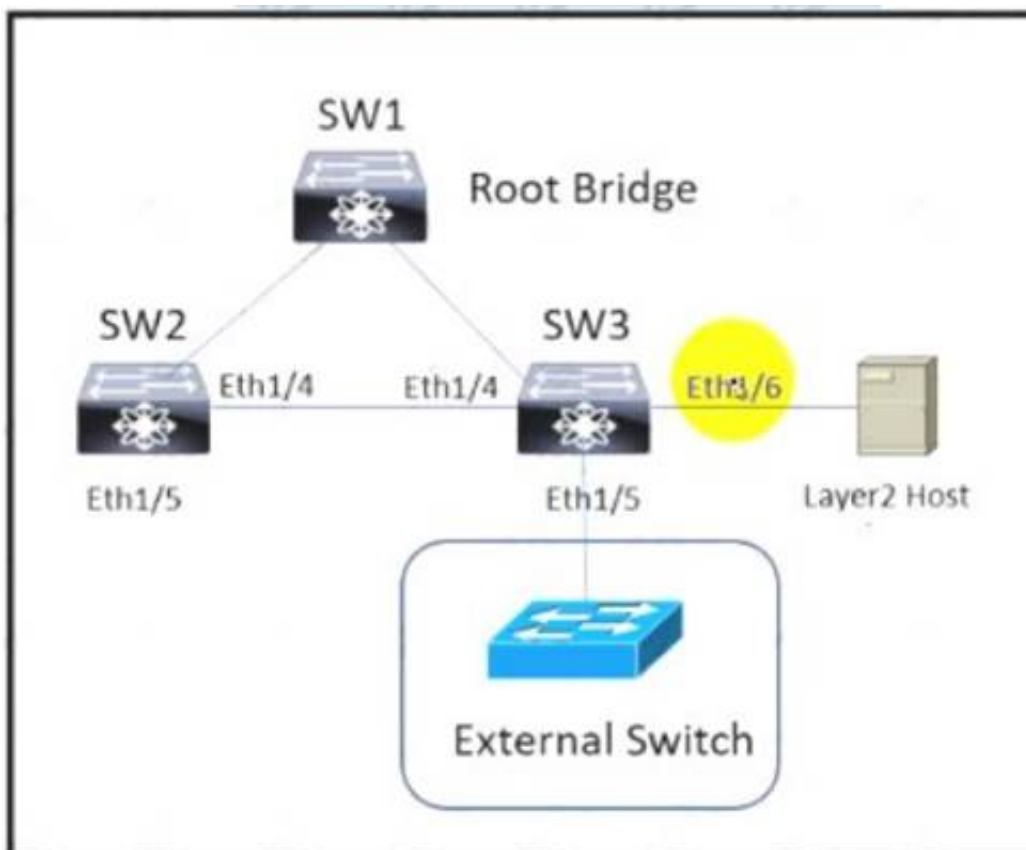
**Answer:** CE

**Explanation:**

Logical configuration—An XML file that includes all logical configuration settings such as service profiles, VLANs, VSANs, pools, and policies. You can use the file generated from this backup to import these configuration settings to the original fabric interconnect or to a different fabric interconnect. You cannot use this file for a system restore.

**NEW QUESTION 102**

Refer to the exhibit.



The Cisco Nexus Series Switches SW1, SW2, and SW3 are connected via Layer 2 copper interfaces. An engineer implements loop prevention standard IEEE 802.1w on each VLAN to provide faster recovery from network changes or failures. The Implementation has these requirements

- Interfaces that are connected to Layer 2 hosts must not receive STP BPDUs.
- The implementation must detect unidirectional links due to one-way traffic twisted-pair links
- Bridge assurance must be enabled between SW2 and SW3
- The Layer 2 domain must be protected from superior BPDUs that arrive from external switches.

Drag and drop the code snippets from the right onto the blanks in the code on the left to complete the configuration for SW3. Not all code snippets are used.

```

1 SW3 configuration
interface ethernet 1/4
 spanning-tree port type
 udid
interface ethernet 1/5
 spanning-tree guard
interface ethernet 1/6
 spanning-tree port type

```

edge

aggressive

normal

network

root

bpdn

- A. Mastered
- B. Not Mastered

**Answer: A**

**Explanation:**

Network Aggressive Bpdu  
edge

#### NEW QUESTION 104

Refer to the exhibit.

```

1  . /etc/init.d/functions
2  exec="/usr/bin/chef-client"
3  prog="chef-client"
4  [ -e /etc/sysconfig/$prog ] && . /etc/sysconfig/$prog
5  config=${CONFIG:-/etc/chef/client.rb}
6  pidfile=${PIDFILE:-/var/run/chef/client.pid}
7  reload() {
8  echo -n $"Reloading $prog: "
9
10     retval=$?
11     echo
12     return $retval
13 }
14 case "$1" in
15     reload)
16         rh_status_q || exit 7
17         ;;
18     exit 2
19     esac
20     exit $?

```

A developer must create a Bash script that performs a Chef Client reload in the event of a system reset. Which command completes the script?

- ☒ `killproc -n $pidfile $exec -SIGHUP`
- ☐ `killproc -pi $pidfile $exec -HUP`
- ☐ `killproc -n $pidfile $exec -HUP`
- ☐ `killproc -p $pidfile $exec -HUP`

- A. Option A
- B. Option B
- C. Option C
- D. Option D

**Answer: D**

#### NEW QUESTION 108

A cisco Nexus 9000 series switch experiences a startup configuration corruption. The engineer must implement a procedure to recover configuration file from the switch. Which command set must be used?

- A. \* 1. Copy the running-configuration to the startup configuration.\* 2. Clear the current configuration of the switch.\* 3. Restart the device.\* 4. Copy a previously saved configuration file to the running configuration.
- B. \* 1. Clear the current configuration of the switch\* 2. Restart the device.\* 3. Copy the running configuration to the startup configuration\* 4. Copy a previously saved configuration file to the running configuration
- C. \* 1. Clear the current configuration of the switch\* 2. Restart the device.\* 3. Copy a previously saved configuration file to the running-configuration\* 4. Copy the running-configuration to the startup configuration.
- D. \* 1.Restarting device.\* 2. Copy the running-configuration file to a remote server.\* 3. Clear the current configuration of the switch.\* 4. Copy the running configuration to the startup configuration

**Answer: C**

**Explanation:**

Problems, such as memory corruption, can occur that make it necessary for you to recover your configuration from a backed-up version. Each time that you enter a copy running-config startup-config command, a binary file is created and the ASCII file is updated. A valid binary configuration file reduces the overall boot time significantly. A binary file cannot be uploaded, but its contents can be used to overwrite the existing startup configuration. The write erase command clears the binary file.

SUMMARY STEPS

- \* 1. write erase

- \* 2. reload
- \* 3. copy configuration-file running-configuration
- \* 4. copy running-config startup-config <https://www.cisco.com/c/en/us/td/docs/switches/datacenter/nexus9000/sw/93x/fundamentals/configuration/guide>

#### NEW QUESTION 110

An engineer must perform a backup operation of the Cisco UCS system. The backup must be transferred to a secure location using UDP and must contain information about VLANs, VSANs, and other policies. Also, the operations team requires the backup file to be in a human-readable format. Which configuration set meets these requirements?

- A. Type: System configuration Protocol: SCP
- B. Type: Logical configuration Protocol: TFTP
- C. Type: All configuration Protocol: FTP
- D. Type: Full state Protocol: SFTP

**Answer: B**

#### NEW QUESTION 111

A network engineer must prevent data corruption due to cross fabric communication in an FCoE environment. Which configuration must be applied to the Cisco Nexus Unified Switches to achieve this objective?

- A. Switch(config)#fcoe fcmmap 0e,fc,2a
- B. Switch(config-if)# no fcoe fcf-priority 0
- C. Switch(config-if) # shutdown lan
- D. Switch(config) # no fcoe fcf-priority

**Answer: A**

#### Explanation:

2. switch(config)# **fcoe fcmmap** fabric-map

3. (Optional) switch(config)# **no fcoe fcmmap** fabric-map

**DETAILED STEPS**

	Command or Action	Purpose
<b>Step 1</b>	switch# <b>configure terminal</b>	Enters configuration mode.
<b>Step 2</b>	switch(config)# <b>fcoe fcmmap</b> fabric-map	Configures the global FC-Map. The default value is 0E.FC.00. The range is from 0E.FC.00 to 0E.FC.FF.
<b>Step 3</b>	switch(config)# <b>no fcoe fcmmap</b> fabric-map	(Optional) Resets the global FC-Map to the default value of 0E.FC.00.

This example shows how to configure the global FC-Map:

```
switch# configure terminal
switch(config)# fcoe fcmmap 0e.fc.2a
```

[https://www.cisco.com/c/en/us/td/docs/switches/datacenter/nexus5000/sw/fcoe/b\\_Cisco\\_Nexus\\_5000\\_Series\\_NX-OS\\_Fibre\\_Channel\\_over\\_Ethernet\\_Configuration\\_Guide/Cisco\\_Nexus\\_5000\\_Series\\_NX-OS\\_Fibre\\_Channel\\_over\\_Ethernet\\_Configuration\\_Guide\\_chapter3.html](https://www.cisco.com/c/en/us/td/docs/switches/datacenter/nexus5000/sw/fcoe/b_Cisco_Nexus_5000_Series_NX-OS_Fibre_Channel_over_Ethernet_Configuration_Guide/Cisco_Nexus_5000_Series_NX-OS_Fibre_Channel_over_Ethernet_Configuration_Guide_chapter3.html)  
You can prevent data corruption due to cross-fabric talk by configuring an FC-Map that identifies the Fibre Channel fabric for this Cisco Nexus device. When the FC-Map is configured, the switch discards the MAC addresses that are not part of the current fabric.  
switch(config)# fcoe fcmmap fabric-map Configures the global FC-Map. The default value is 0E.FC.00. The range is from 0E.FC.00 to 0E.FC.FF.  
[https://www.cisco.com/c/en/us/td/docs/switches/datacenter/nexus5000/sw/fcoe/513\\_n1\\_1/b\\_Cisco\\_n5k\\_fcoe\\_co](https://www.cisco.com/c/en/us/td/docs/switches/datacenter/nexus5000/sw/fcoe/513_n1_1/b_Cisco_n5k_fcoe_co)

#### NEW QUESTION 113

A network engineer must deploy a configuration backup policy to the Cisco UCS Manager. The file generated from this backup must have a snapshot of the entire system that should be used to restore the system during disaster recovery. The backup file must be transferred insecurely by using the TCP protocol. Which configuration backup settings meet these requirements?

- A. Type: All Configuration Protocol: SCP
- B. Type: Logical Configuration Protocol: SFTP
- C. Type: Full State Protocol: FTP
- D. Type: System Configuration Protocol: TFTP

**Answer: C**

#### NEW QUESTION 117

A customer has a requirement for an automation solution that supports periodically acquiring configuration from a centralized server and aligning UCS servers to their desired state. Which open-source tool meets these requirements?

- A. SaltStack
- B. Terraform
- C. Puppet
- D. Kubemetes



Answer: C

**Explanation:**

"Overview of Puppet architecture: [...] After it receives a catalog, the Puppet agent applies the catalog by checking each resource that the catalog describes. If it finds any resources that are not in their desired state, it makes any changes necessary to correct them."

[https://www.cisco.com/c/dam/en/us/products/collateral/servers-unified-computing/ucs-c-series-rackservers/whitepaper\\_c11-740103.pdf](https://www.cisco.com/c/dam/en/us/products/collateral/servers-unified-computing/ucs-c-series-rackservers/whitepaper_c11-740103.pdf)

<https://www.cisco.com/c/dam/en/us/products/collateral/servers-unified-computing/ucs-devops-integration-sol-br>

from DCCOR book under Puppet section The operation of the Puppet agent involves periodically connecting to the Puppet master, which in turn compiles and sends a configuration manifest to the agent. The agent reconciles this manifest with the current state of the node and updates state that is based on differences.

**NEW QUESTION 120**

An engineer is implementing Cisco Intersight in a secure environment. The environment must use LDAP directory service and ensure information integrity and confidentiality. Which two steps must be taken to implement the solution? (Choose two.)

- A. Enable Encryption for LDAP
- B. Add a self-signed LDAP certificate to Cisco Intersight.
- C. Enable Certificate Signing Request in Cisco Intersight.
- D. Add a trusted root LDAP certificate to Cisco Intersight
- E. Add a trusted OAuth token to Cisco Intersight

Answer: AD

**Explanation:**

**Step 3** On the **Configure LDAP** page, add the corresponding details in the fields that are listed below, and click **Save**.

- **Name**—Enter a name to easily identify the LDAP domain that you are configuring.
- **Base DN**—Enter a Base Distinguished Name (DN) for the server. For example, DC=Intersight, DC=com.
- **Bind DN**—Enter a DN used to authenticate against LDAP server and the password for the user.
- **Group Attribute**—Enter the Group member attribute to which an LDAP entry belongs. Cisco Intersight Virtual Appliance uses this Group attribute to map/assign Intersight roles to the user. The default value is **member** and you can change it from **Edit LDAP** settings.
- **Password**—Enter a DN password for the user.
- **Enable Encryption**—You must **enable Encryption to secure the communication over the LDAP server**. If encryption is enabled, **a trusted root certificate has to be added**. For more information, see *Adding Certificates*.
- **In Server**—Add an LDAP Server IP address or hostname. **Cisco Intersight Virtual Appliance supports only one LDAP provider and port.**

**Attention**

- LDAPS is supported on Port 636 and Port 3269. All other ports support LDAP on TLS.
- **Cisco Intersight Virtual Appliance uses the email ID or username to log in an LDAP user.** If you want to use email ID to log in to the appliance, configure the mail attribute in the LDAP server. If you want to use the username, use the sAMAccountName configured for that user in the LDAP server.
- **After you add the required details to configure LDAP settings, wait for the DeployApplianceLDAP workflow to complete before you add User or Group to assign appropriate roles to LDAP users.** You can

[https://www.cisco.com/c/en/us/td/docs/unified\\_computing/Intersight/b\\_Cisco\\_Intersight\\_Appliance\\_Getting\\_Started\\_Guide/b\\_Cisco\\_Intersight\\_Appliance\\_Install\\_and\\_Upgrade\\_Guide\\_chapter\\_0110.html](https://www.cisco.com/c/en/us/td/docs/unified_computing/Intersight/b_Cisco_Intersight_Appliance_Getting_Started_Guide/b_Cisco_Intersight_Appliance_Install_and_Upgrade_Guide_chapter_0110.html)

**NEW QUESTION 124**

An engineer must create a scheduler configuration to create two backup jobs per day. The backup file must be copied to a server in the operations VRF. Which configuration accomplishes this task?

A)

```
scheduler schedule name CNFGBACKUP
  job name BACKUP-JOB
  copy running-config tftp://10.19.11.12/${SWITCHNAME}-${TIMESTAMP}.cfg vrf operations
  time start now repeat 12:00
```

B)

```
scheduler schedule name CNFGBACKUP
  job name BACKUP-JOB
  show tech-support | redirect vrf operations tftp://10.19.11.12/${SWITCHNAME}-${TIMESTAMP}.cfg
  time start daily 12:30 0:30
```

C)

```
scheduler schedule name CNFGBACKUP
  job name BACKUP-JOB
  copy startup-config tftp://10.19.11.12/${SWITCHNAME}-${TIMESTAMP}.cfg
  time daily 12:30 0:30
```

D)

```
scheduler schedule name CNFGBACKUP
  job name BACKUP-JOB
  copy vrf operations config tftp://10.19.11.12/$(SWITCHNAME)-$(TIMESTAMP).cfg
  time start 12:30 repeat 12
```

- A. Option A
- B. Option B
- C. Option C
- D. Option D

**Answer:** A

#### NEW QUESTION 127

An engineer must configure a Nexus 7000 series switch for HSRP on VLAN 100. When fully functional, the router must be the active master. Which set of commands must be used to implement the scenario?

- ☒ feature hsrp  
interface vlan100  
ip address 10.1.1.2 255.255.255.0  
priority 120  
hsrp version 2  
hsrp 1000  
ip 10.1.1.1
- ☐ feature hsrp  
interface vlan100  
ip address 10.1.1.2 255.255.255.0  
priority 100  
hsrp version 2  
hsrp 1000  
ip 10.1.1.1
- ☐ feature-set hsrp  
interface vlan100  
ip address 10.1.1.2 255.255.255.0  
priority 110  
hsrp version 2  
hsrp 1000  
ip 10.1.1.1
- ☐ feature-set hsrp  
interface vlan100  
ip address 10.1.1.2 255.255.255.0  
priority 80  
hsrp version 2  
hsrp 1000  
ip 10.1.1.1

- A. Option A
- B. Option B
- C. Option C
- D. Option D

**Answer:** A

#### NEW QUESTION 132

Refer to the exhibit.

```
ACI-Leaf1# show ip route vrf DATACENTER:DC
10.20.1.0/24, ubest/mbest: 1/0, attached, direct, pervasive
  *via 10.0.8.65%overlay-1, [1/0], 4w3d, static
172.16.100.0/24, ubest/mbest: 1/0
  *via 10.1.168.95%overlay-1, [200/5], 3wod, bgp-132, internal, tag 132 (mpls-vpn)
172.16.99.0/24, ubest/mbest: 1/0
  *via 10.0.1.14, [20/0], 3wod, bgp-132, external, tag 200
```

Which two statements about the routing table of the leaf switch are true? (Choose two.)

- A. The next hop 10.0.1.14 for route 172.16.99.0/24 is the TEP address of a border leaf in ACI.
- B. 172.16.100.0/24 is a BD subnet in ACI.
- C. The next hop 10.0.8.65 for route 10.20.1.0/24 is the TEP address of a border leaf in ACI.
- D. The next hop 10.1.168.95 for route 172.16.100.0/24 is the TEP address of a border leaf in ACI.

E. 10.20.1.0/24 is a BD subnet in ACI.

**Answer:** DE

#### NEW QUESTION 135

An engineer performs a Firmware Auto Install upgrade through the Cisco UCS Manager. Which two Cisco UCS components are upgraded in the Install Server Firmware stage? (Choose two)

- A. Cisco UCS C-Series Rack-Mount Server
- B. I/O Modules
- C. Cisco UCS Manager
- D. Cisco UCS B-Series Blade Server
- E. Fabric Interconnects

**Answer:** BE

#### NEW QUESTION 137

Which command reduces the amount of time it takes to complete the ISSU on a Cisco Nexus 7000 series switch that has dual supervisor modules and two I/O modules?

- A. install all kickstart <image>system<image>parallel
- B. install all epld bootflash:<image>
- C. install all epld bootflash:<image>
- D. install all kickstart<image>system<image>

**Answer:** A

#### Explanation:

Graphical user interface, text, application Description automatically generated

##### Parallel Upgrade

##### Parallel Upgrade with I/O Modules

Starting with Cisco NX-OS Release 5.2(1), multiple linecards can be simultaneously upgraded, and the infrastructure support is available. This decreases the ISSU time when compared with an ISSU upgrade that is done serially (one card at a time).

To start a parallel upgrade, use the following command: **install all kickstart image system image parallel**

Up to three linecards can be upgraded in parallel with this command. During the upgrade process, the upgrade of the linecards is displayed in the output as follows:

```
Non-disruptive upgrading.
[#          ] 0%
Module 5 upgrade completed successfully.
.
.
.
Module 3 upgrade completed successfully.
```

[https://www.cisco.com/c/en/us/td/docs/switches/datacenter/nexus7000/sw/upgrade/guide/cisco\\_nexus7000\\_software\\_upgrade\\_and\\_downgrade\\_guide\\_8x.html](https://www.cisco.com/c/en/us/td/docs/switches/datacenter/nexus7000/sw/upgrade/guide/cisco_nexus7000_software_upgrade_and_downgrade_guide_8x.html)  
[https://www.cisco.com/c/en/us/td/docs/switches/datacenter/sw/7\\_x/nx-os/upgrade/guide/b\\_Cisco\\_Nexus\\_7000\\_Series\\_NX-OS\\_Software\\_Upgrade\\_and\\_Downgrade\\_Guide\\_Release\\_7-x.html#d54e307a1635](https://www.cisco.com/c/en/us/td/docs/switches/datacenter/sw/7_x/nx-os/upgrade/guide/b_Cisco_Nexus_7000_Series_NX-OS_Software_Upgrade_and_Downgrade_Guide_Release_7-x.html#d54e307a1635)

#### NEW QUESTION 140

What is required for using Ansible with HTTP/HTTPS protocol in a Cisco NX-OS environment?

- A. SSH
- B. Open Agent Container
- C. XML management interface
- D. NX-API

**Answer:** D

#### Explanation:

[https://docs.ansible.com/ansible/2.5/modules/nxos\\_nxapi\\_module.html](https://docs.ansible.com/ansible/2.5/modules/nxos_nxapi_module.html) [https://docs.ansible.com/ansible/latest/network/user\\_guide/platform\\_nxos.html](https://docs.ansible.com/ansible/latest/network/user_guide/platform_nxos.html)

#### NEW QUESTION 145

The Cisco Nexus switch Generic Online Diagnostics policy for a PortLoopback test requires 10 consecutive failures to error disable the port. The customer wants to change it to 5 consecutive failures. Which configuration applies the changes for module 1 only?



- ❖ Nexus(config)# event manager applet custom-PortLoopback override \_\_PortLoopback  
Nexus(config-applet)# event gold mod all test PortLoopback testing-type bootup consecutive-failure 5  
Nexus(config-applet)# action 1 publish-event
- ❖ Nexus(config)# event manager applet custom-PortLoopback override \_\_PortLoopback  
Nexus(config-applet)# event gold mod 1test PortLoopback testing-type bootup consecutive-failure 5  
Nexus(config-applet)# action 1 publish-event
- ❖ Nexus(config)# event manager applet custom-PortLoopback override \_\_PortLoopback  
Nexus(config-applet)# event gold mod all test PortLoopback testing-type monitoring consecutive-failure 5  
Nexus(config-applet)# action 1 policy-default
- ❖ Nexus(config)# event manager applet custom-PortLoopback override \_\_PortLoopback  
Nexus(config-applet)# event gold mod 1 test PortLoopback testing-type monitoring consecutive-failure 5  
Nexus(config-applet)# action 1 policy-default

- A. Option A
- B. Option B
- C. Option C
- D. Option D

**Answer: D**

**Explanation:**

“mod all” is incorrect. “mod 1test” is incorrect. “publish event” is incorrect. “mod 1 test” is correct. It is with “policy-default”.

[https://www.cisco.com/c/en/us/td/docs/switches/datacenter/nexus7000/sw/system-management/guide/b\\_Cisco\\_Nexus\\_7000\\_Series\\_NX-OS\\_System\\_Management\\_Configuration\\_Guide-RI/configuring\\_online\\_diagnostics.html](https://www.cisco.com/c/en/us/td/docs/switches/datacenter/nexus7000/sw/system-management/guide/b_Cisco_Nexus_7000_Series_NX-OS_System_Management_Configuration_Guide-RI/configuring_online_diagnostics.html)

[https://www.cisco.com/c/en/us/td/docs/switches/datacenter/nexus9000/sw/93x/system-management/bcisco-nexus-9000-series-nx-os-system-management-configuration-guide-93x/b-cisco-nexus-9000-seriesnxos-system-management-configuration-guide-93x\\_chapter\\_011010.html](https://www.cisco.com/c/en/us/td/docs/switches/datacenter/nexus9000/sw/93x/system-management/bcisco-nexus-9000-series-nx-os-system-management-configuration-guide-93x/b-cisco-nexus-9000-seriesnxos-system-management-configuration-guide-93x_chapter_011010.html)

<https://www.ciscolive.com/c/dam/r/ciscolive/us/docs/2017/pdf/BRKDCN-3234.pdf>

**NEW QUESTION 149**

A company must security harden its Cisco UCS C-Series servers. The security policy requires all out-of-band management to meet these requirements

- It must encrypt all traffic
- It must use nondefault ports
- It must provide private administrative sessions Which Cisco IMC corrrflguraton meets the requirements?

- ❖ data1# scope sol  
data1 /sol # set enabled yes  
data1 /sol # set encrypted tls1.2  
data1 /sol # set port 3389  
data1 /sol # set session max 2  
data1 /sol # set deny-local yes
- ❖ data1# scope cimc  
data1 /cimc # set enabled yes  
data1 /cimc # set encrypted tis  
data1 /cimc # set kvm-port 1972  
data1 /cimc # set max-sessions 1  
data1 /cimc # set local-session deny
- ❖ data1# scope oob  
data1 /oob # set enabled no  
data1 /oob # set encrypted yes  
data1 /oob # set kvm-port 2068  
data1 /oob # set max-sessions 1  
data1 /oob # set local-access no
- ❖ data1# scope kvm  
data1 /kvm # set enabled yes  
data1 /kvm # set encrypted yes  
data1 /kvm # set kvm-port 3168  
data1 /kvm # set max-sessions 1  
data1 /kvm # set local-video no

- A. Option A
- B. Option B
- C. Option C
- D. Option D

**Answer: D**

**NEW QUESTION 152**

A network engineer repeatedly saves a configuration on Catalyst switches to NVRAM using the write memory command. What action should be taken to implement the same action on Nexus switches?

- A. Use the write memory command to save the configuration.
- B. Use the alias command to use the write memory command.
- C. Use the exit command to leave the configuration mode and save the configuration automatically.
- D. Use the wri command to use the copy running-config startup-config command.

**Answer: B**



**NEW QUESTION 157**

An engineer must implement a Cisco UCS system at a customer site. One of the requirements is to implement SAN boot. The storage system maps the source WWPN to a unique LUN. Which method does Cisco recommend to configure the SAN boot?

- A. Create a SAN boot policy in which every initiator is mapped to the same target LUN.
- B. Define the vHBAs as bootable and leave the default values on the target definition.
- C. Define the vHBAs as bootable and leave the boot target definition empty.
- D. Create a SAN boot policy in which every initiator is mapped to a different target LUN.

**Answer:** A

**Explanation:**

While you have multiple zones consisting of FC vHBAs and storage target wwpsns for SAN Fabrics A and B, you are ultimately booting off of the same boot LUN. Multiple paths to get to the same boot device which correspond with the same LUN ID.  
[https://www.cisco.com/c/en/us/td/docs/unified\\_computing/ucs/ts/guide/UCSTroubleshooting/UCSTroubleshooting\\_chapter\\_0110.html#r\\_sanarrayconfigurationchecklist](https://www.cisco.com/c/en/us/td/docs/unified_computing/ucs/ts/guide/UCSTroubleshooting/UCSTroubleshooting_chapter_0110.html#r_sanarrayconfigurationchecklist)

**NEW QUESTION 158**

An engineer configures the properties of a cisco UCS cisco integrated Management controller network adapter for a standalone cisco C-Series server. The Fallback Timeout in the vNIC was set to 600. When the failure occurs. The secondary must be used and then fallback when the primary interface becomes available again. Which action be taken to meet these requirements?

- A. Set default VLAN on the adapters.
- B. Increase Cos to 6.
- C. Disable VNTAG mode.
- D. Enable Uplink failover.

**Answer:** D

**Explanation:**

Enable Uplink Failover check box - Check this box if traffic on this vNIC should fail over to the secondary interface if there are communication problems. VNTAG mode is required for this option.  
Fallback timeout field - After a vNIC has started using its secondary interface, this setting controls how long the primary interface must be available before the system resumes using the primary interface for the vNIC. Enter a number of seconds between 0 and 600. VNTAG mode is required for this option.  
[https://www.cisco.com/en/US/docs/unified\\_computing/ucs/c/sw/gui/config/guide/1.5/b\\_Cisco\\_UCS\\_C-series\\_G](https://www.cisco.com/en/US/docs/unified_computing/ucs/c/sw/gui/config/guide/1.5/b_Cisco_UCS_C-series_G)

**NEW QUESTION 160**

What is a benefit of using Cisco Tetration?

- A. It collects telemetry data from servers and then uses software sensors to analyze flow information.
- B. It collects near-real time data from servers and inventories the software packages that exist on servers.
- C. It collects policy compliance data and process details.
- D. It collects enforcement data from servers and collects interpacket variation.

**Answer:** A

**NEW QUESTION 162**

Refer to the exhibit.

```
N7K-1
spanning-tree vlan 1-10 priority 8192

vpc domain 100
  role priority 100
  peer-keepalive destination 10.1.1.2 source 10.1.1.1
vrf default
  delay restore 60
  peer-switch
  auto-recovery
  ip arp synchronize

N7K-2
spanning-tree vlan 1-10 priority 8192

vpc domain 100
  role priority 200
  peer-keepalive destination 10.1.1.1 source 10.1.1.2
vrf default
  delay restore 60
  peer-switch
  auto-recovery
  ip arp synchronize
```

The STP priority of N7K-1 and N7K-2 are the lowest in the network. Which statement describes STP on the vPC?

- A. N7K-1 appears as the STP root.
- B. N7K-2 appears as the STP root.
- C. N7K-1 and N7K-2 appear as a single STP root.
- D. N7K-1 preempts N7K-2 as the STP root.

**Answer: C**

#### NEW QUESTION 167

An engineer must migrate a Cisco UCS C-Series server from Cisco SingleConnect to direct integration mode. The Cisco UCS Manager Rack Server Discovery Policy and Rack Management Connection Policy are set to immediate and Auto-Acknowledge. Which set of steps accomplishes this task?

- ☒ Disconnect the cables from the FEX.  
Connect the cables to appliance ports on the fabric interconnect.  
Reset the Cisco IMC of the server.
- ☐ Disconnect the cables from the FEX.  
Connect the cables to server ports on the fabric interconnect.  
Reset the Cisco IMC of the server.
- ☐ Disconnect the cables from the FEX.  
Connect the cables to appliance ports on the fabric interconnect.  
Reacknowledge the server.
- ☐ Disconnect the cables from the FEX.  
Connect the cables to server ports on the fabric interconnect.  
Reacknowledge the server.

- A. Option A
- B. Option B
- C. Option C
- D. Option D

**Answer: D**

#### NEW QUESTION 169

An engineer is implementing a Cisco ACI fabric and must use static VLAN range as part of a VMM deployment. The static VLAN must be incorporated into the dynamic VLAN pool. The existing VLAN pool is set for dynamic allocation. Which action accomplishes this goal?

- A. Add the VLAN to the pool configured with Inherit Allocation Mode from parent.
- B. Change the existing VLAN pool to static allocation mode.
- C. Add a static VLAN allocation range to the VLAN pool.
- D. Create a static reservation within the dynamic VLAN pool.

**Answer: C**

#### NEW QUESTION 172

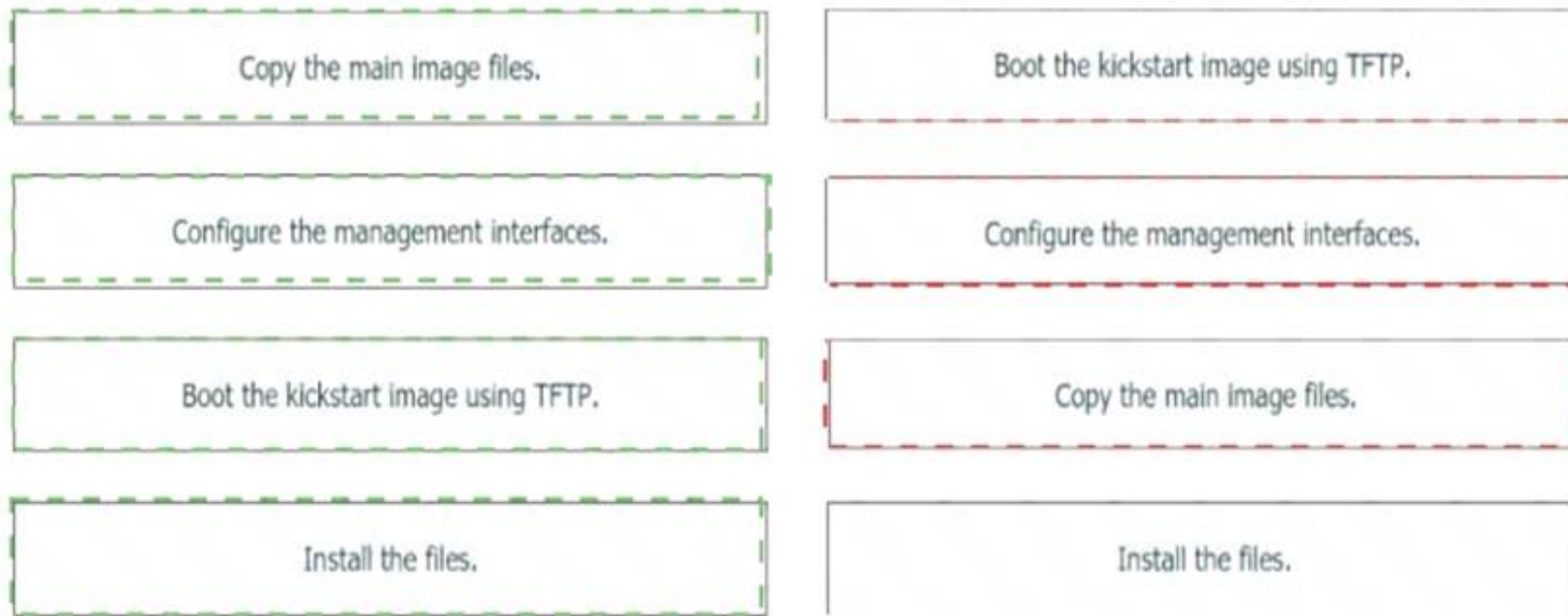
Drag and drop the steps on the left onto the order that they must be implemented on the right to recover a fabric interconnect when there is no working image on the bootflash.

Copy the main image files.	step 1
Configure the management interfaces.	step 2
Boot the kickstart image using TFTP.	step 3
Install the files.	step 4

- A. Mastered
- B. Not Mastered

**Answer: A**

**Explanation:**



#### NEW QUESTION 174

Which statement about the impact of a rolling EPLD upgrade on a Cisco MDS 9000 Series Switch is true?

- A. All modules on the switch are disrupted.
- B. An EPLD upgrade is nondisruptive.
- C. Only the modules that are being upgraded are disrupted.
- D. The upgrade can be performed from the standby supervisor module.

**Answer:** C

#### Explanation:

[https://www.cisco.com/c/en/us/td/docs/switches/datacenter/mds9000/sw/6\\_2/release/notes/epld/epld\\_rn.html#pgfId-241919](https://www.cisco.com/c/en/us/td/docs/switches/datacenter/mds9000/sw/6_2/release/notes/epld/epld_rn.html#pgfId-241919)

#### NEW QUESTION 178

Refer to the exhibit.

```
; Router 1 configuration
interface loopback1
 ip address 10.10.32.121/30
 ip ospf network point-to-point
 ip router ospf 1 area 0.0.0.0
 ip pim sparse-mode

ip pim rp-address 10.10.32.122 group-list 225.0.0.0/8 bi-dir
```

In a bidirectional PIM network using Phantom RP as an RP redundancy mechanism, two Cisco NX-OS routers have these requirements:

- R1 must be the active RP.
- R2 must be the backup RP that is used only if R1 is not reachable

Drag and drop the configuration steps to complete the configuration for Router 2. Not all configuration steps are used.

```
; Router 2 configuration
interface loopback1
 ip address 
 ip ospf network 
 ip router ospf 1 area 0.0.0.0
 ip pim 

ip pim rp-address  group-list 225.0.0.0/8 bi-dir
```

- |                 |              |                |            |
|-----------------|--------------|----------------|------------|
| 10.10.32.121/32 | 10.10.32.121 | point-to-point | broadcast  |
| 10.10.32.121/29 | 10.10.32.122 | sparse-mode    | dense-mode |

- A. Mastered
- B. Not Mastered

**Answer:** A

**Explanation:**

Graphical user interface, text, application Description automatically generated

Answer :

ip address 10.10.32.121/29

ip ospf network point-to-point

router ospf 1 area 0.0.0.0

ip pim sparse-mode

ip pim rp-address 10.10.32.122 group-list 255.0.0.0/8 bi-dir

**NEW QUESTION 179**

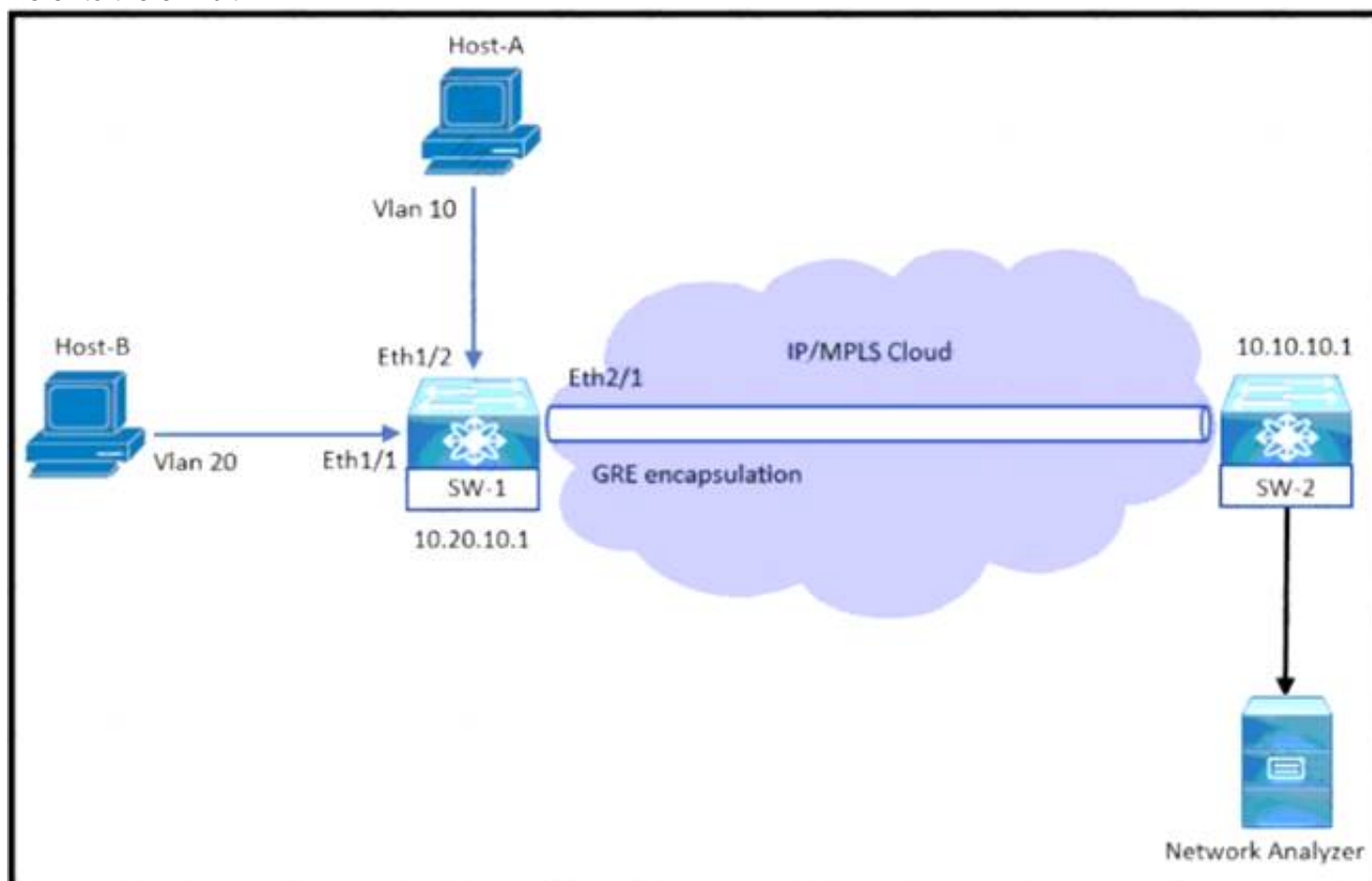
A network engineer must migrate a Cisco WSA virtual appliance from one physical host to another physical host by using VMware vMotion. What is a requirement for both physical hosts?

- A. The hosts must run Cisco AsyncOS 10.0 or greater.
- B. The hosts must have access to the same defined network.
- C. The hosts must run different versions of Cisco AsyncOS.
- D. The hosts must use a different datastore than the virtual appliance

**Answer:** B

**NEW QUESTION 184**

Refer to the exhibit.



An engineer monitors ingress traffic from Host-A and all traffic for VLAN 20 from Host-B. Which configuration must be implemented to monitor and export traffic to Network Analyzer?



- ☐ SW-1(config)# monitor session 5  
SW-1(config-monitor)# source interface ethernet 1/2 rx  
SW-1(config-monitor)# source interface ethernet 1/1 tx  
SW-1(config-monitor)# source vlan 20 both  
SW-1(config-monitor)# destination ip 10.10.10.1  
SW-1(config-monitor)# no shut
- ☐ SW-1(config)# monitor session 5 type erspan-source  
SW-1(config-erspan-src)# source interface ethernet 1/2 rx  
SW-1(config-erspan-src)# source vlan 20 both  
SW-1(config-erspan-src)# destination ip 10.10.10.1  
SW-1(config-erspan-src)# erspan-id 111  
SW-1(config-erspan-src)# no shut
- ☐ SW-1(config)# monitor session 5 type erspan  
SW-1(config-erspan-src)# source interface ethernet 1/2 rx  
SW-1(config-erspan-src)# source interface ethernet 1/1 both  
SW-1(config-erspan-src)# destination ip 10.10.10.1  
SW-1(config-erspan-src)# mtu 1000  
SW-1(config-erspan-src)# no shut
- ☐ SW-1(config)# monitor session 5  
SW-1(config-monitor)# source interface ethernet 1/2 rx  
SW-1(config-monitor)# source interface ethernet 1/1 both  
SW-1(config-monitor)# source vlan 20 both  
SW-1(config-monitor)# destination interface ethernet 2/1  
SW-1(config-monitor)# no shut

- A. Option A
- B. Option B
- C. Option C
- D. Option D

**Answer:** B

#### NEW QUESTION 185

An engineer is implementing the Cisco ACI fabric and must create two different vPCs from leaf switches A and B. The vPCs are deployed as follows:

- vPC 1 encompasses ports Eth 1 /1 on leaf A and B and connects to server 1.
- vPC 2 encompasses port Eth1/2 on leaf A and B and connects to server 2.

A leaf switch profile listing leaves A and B is already configured Which ACI object must be created to meet these requirements?

- A. two vPC interface policy groups
- B. one access port interface policy group
- C. two PortChannel interface policy groups
- D. one vPC interface policy group

**Answer:** A

#### NEW QUESTION 186

Refer to the exhibit.

```
NEXUS (config)# feature tacacs+
NEXUS (config)# tacacs-server timeout 5
NEXUS (config)# tacacs-server directed-request
NEXUS (config)# tacacs-server deadtime 0
NEXUS (config)# tacacs server host 10.1.50.20 port 49
NEXUS (config)# tacacs-server host 10.1.50.20 key 7 "Flwhg123" timeout 1
NEXUS (config)# aaa group server tacacs+ ISE
NEXUS (config-tacacs+)# server 10.1.50.20
NEXUS (config-tacacs+)# deadtime 10
NEXUS (config-tacacs+)# use-vrf management
NEXUS (config-tacacs+)# source-interface mgmt 0
NEXUS (config)# aaa authentication login default group ISE
```

What is the result of implementing this configuration?

- A. The TACACS+ server uses the type-6 encrypted format.
- B. The switch queries the TACACS+ server by using a clear text PAP login.
- C. The timeout value on the TACACS+ server is 10 seconds.
- D. The switch queries the TACACS+ server by using an encrypted text PAP login.

**Answer:** D

#### Explanation:

tacacs-server key

To configure a global TACACS+ shared secret key, use the tacacs-server key command. To remove a configured shared secret, use the no form of this command.

tacacs-server key [0 | 7] shared-secret Syntax Description

7 (Optional) Configures a preshared key specified in encrypted text to authenticate communication between the TACACS+ client and server.

By default, the Cisco NX-OS device uses Password Authentication Protocol (PAP) authentication between the Cisco NX-OS device and the remote server. If you enable CHAP, you need to configure your RADIUS or TACACS+ server to recognize the CHAP vendor-specific attributes (VSAs).

**NEW QUESTION 190**

An engineer must perform backup and restore of the Cisco UCS Manager configuration. The configuration must be stored on a remote server via XML encoding. The backup must store the configurations of the chassis, FEX, rack servers, IOMs, and blade server. Which set of actions accomplishes these goals?

- A. Perform a logical configuration backup and run the replace import method.
- B. Perform a full state configuration backup and run the restore procedure.
- C. Perform a system configuration backup and run the merge import method.
- D. Perform an all configuration backup and run the system restore procedure.

**Answer:** A

**NEW QUESTION 195**

A Cisco ACI engineer must configure an access port on a Cisco ACI leaf switch. The access policy should be configured so that it supports L3out connectivity concurrently with several EPGs that are mapped to this interface with the static port method. How should the access policy be configured?

- A. by linking the interface policy group to multiple Attachable Access Entity Profiles
- B. with a single Attachable Access Entity Profile that is linked to the corresponding routed domain and physical domain
- C. with two interface policy groups that are linked to the same interface profile port selector
- D. by mapping a single physical domain, mapped to the L3out and EPG interfaces

**Answer:** D

**NEW QUESTION 199**

An engineer must start a software upgrade on a Cisco Nexus 5000 Series Switch during a zone merge. What is the result of this action?

- A. The zone merge stops.
- B. The zone merge pauses until the upgrade completes.
- C. The upgrade stops.
- D. The zone merge executes and then the upgrade completes.

**Answer:** C

**Explanation:**

[https://www.cisco.com/c/en/us/td/docs/switches/datacenter/nexus5500/sw/upgrade/602\\_N2\\_2/n5500\\_upgrade\\_d](https://www.cisco.com/c/en/us/td/docs/switches/datacenter/nexus5500/sw/upgrade/602_N2_2/n5500_upgrade_d)

The specific requirements for a nondisruptive upgrade (ISSU) are as follows:

- Topology requirements—A Cisco Nexus device on which an ISSU is being initiated should not be in one of the unsupported topologies listed in the previous figure. No interface should be in a spanning-tree designated forwarding state. Also, do not configure Bridge Assurance on any interface of the Cisco Nexus device. vPC peer-link is an exception to these requirements.
- Layer 2 requirement—The ISSU process aborts if the system has any Link Aggregation Control Protocol (LACP) fast timers configured.
- FC/FCoE requirements—Check that the topology is stable for an ISSU to work correctly. You must check the following:
  - Domain Manager—As part of the installation process, domain manager checks if the fabric is in a stable state. If the fabric is not stable, the installation aborts.
  - CFS—As part of the installation process, Cisco Fabric Services (CFS) checks if any application (ntp, fsm, rcsn, fctime) is locked. If any application is holding a CFS lock, the installation aborts.
  - Zone Server—The installation process aborts if a zone merge or zone change request is in progress.
  - FSPF—As part of the upgrade process, Fabric Shortest Path First (FSPF) verifies if the configured interface dead interval is more than 80 seconds; otherwise, the installation aborts.

**NEW QUESTION 204**

The VMM domain is integrated between Cisco APICs and vCenter using a distributed vSwitch. The traffic must be blocked between a subset of endpoints in an EPG based on specific VM attributes and the rest of the VMs in that EPG. Which set of actions blocks this traffic?

- ☒ 1. Set Allow Microsegmentation under the EPG VMM Domain Association to "True"  
2. Set Intra-EPG Isolation to "Enforced" for the EPG  
3. Set Intra-EPG Isolation to "Enforced" for the uSeg EPG
- ☐ 1. Set Allow Microsegmentation under the EPG VMM Domain Association to "True"  
2. Set Intra-EPG Isolation to "Unenforced" for the EPG  
3. Set Intra-EPG Isolation to "Unenforced" for the uSeg EPG
- ☐ 1. Set Allow Microsegmentation under the EPG VMM Domain Association to "False"  
2. Set Intra-EPG Isolation to "Unenforced" for the EPG  
3. Set Intra-EPG Isolation to "Enforced" for the uSeg EPG
- ☐ 1. Set Allow Microsegmentation under the EPG VMM Domain Association to "True"  
2. Set Intra-EPG Isolation to "Enforced" for the EPG  
3. Set Intra-EPG Isolation to "Unenforced" for the uSeg EPG

- A. Option A
- B. Option B
- C. Option C
- D. Option D

Answer: A

#### NEW QUESTION 205

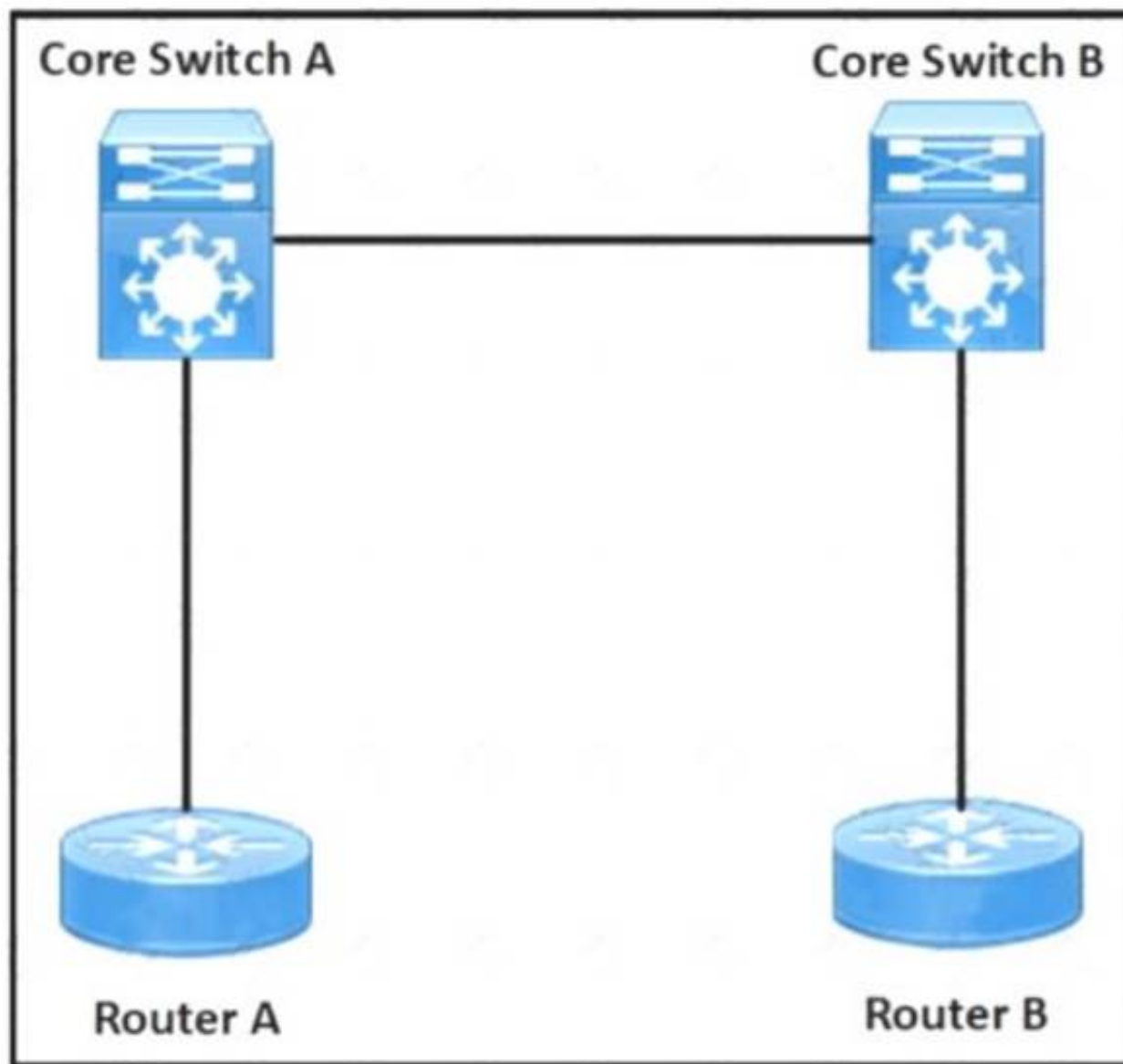
An engineer evaluates a UI-based infrastructure management system capable of monitoring and deploying standardize VXLAN BGP EVPN deployments. The storage administrator else need the solution to manage the cisco MDS 9090 series Switches. Which solution meets these requirements?

- A. Intersight
- B. UCSD
- C. Tetration
- D. DCNM

Answer: D

#### NEW QUESTION 206

Refer to the exhibit.



```
feature vn-segment-vlan-based
feature nv overlay

vlan 10
  vn-segment 10010

Interface Loopback0
  ip address 10.10.0.1/32
  ip pim sparse mode
```

A network engineer configures the VXLAN between the routers in a data center. The VLAN 10 must be extended between routers A and B. The initial VXLAN configuration is completed on Router A. Which configuration finishes the VXLAN configuration on Router A?

- A.
 

```
vrf context tenant1
vni 10010

Interface nve1
source-interface lo0
no shutdown
member vni 10010 interface 10.10.0.1
```

B.



system bridge-domain 10

member vni 10010

interface nve1

no shutdown

source-interface lo0

C.

Interface nve1

no shutdown

source-interface lo0

vni 10100 l2

rd auto

D.

Interface nve1

no shutdown

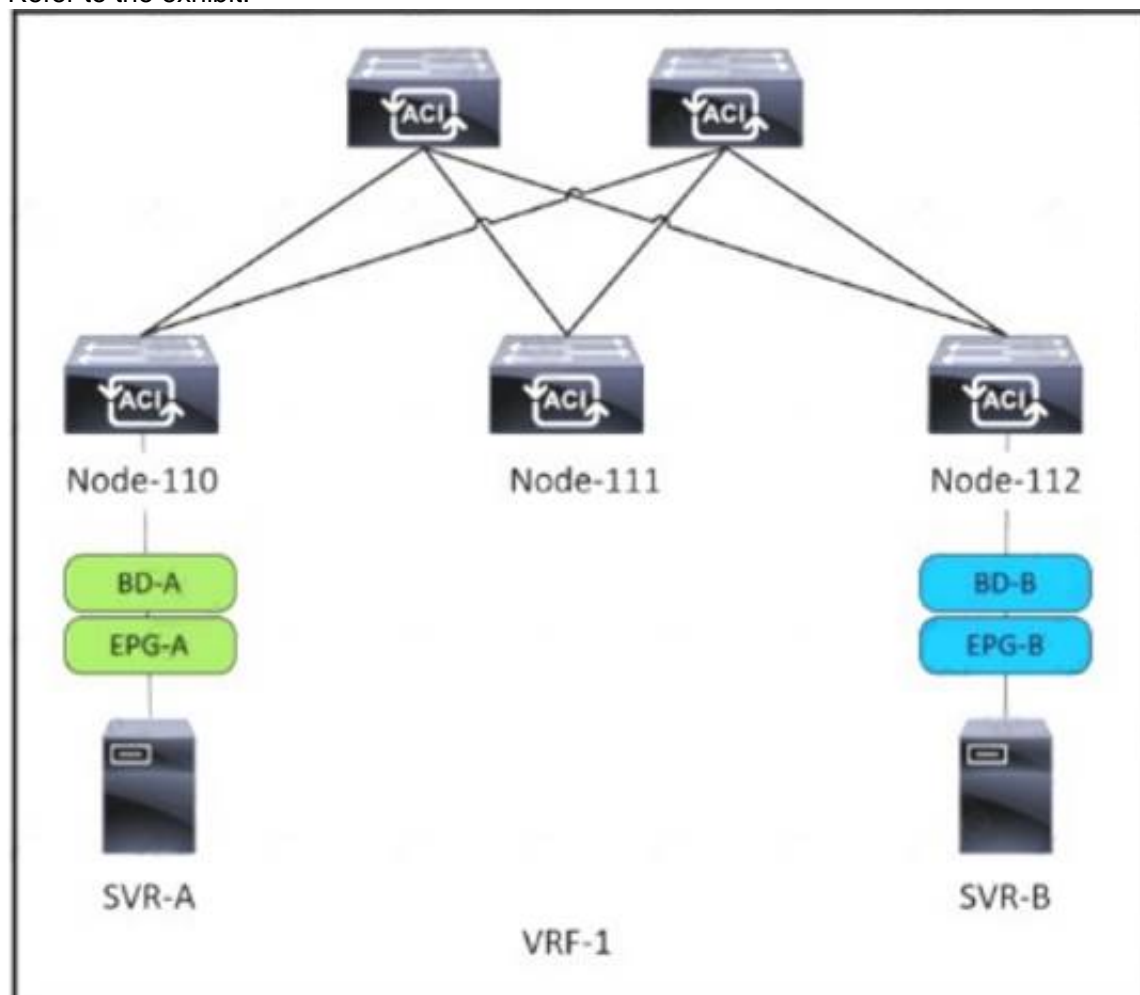
source-interface lo0

member vni 10010 mcast-group 231.1.1.1

Answer: C

#### NEW QUESTION 210

Refer to the exhibit.



SVR-A in EPG-A/BD-A fails to reach SVR-B in EPG-B/BD-B. Which two conditions should be verified to analyze the traffic between the two EPGs? (Choose two.)

- A. A contract exists between EPG-A and EPG-B and allows the traffic.
- B. Limit Endpoint Learning is disabled on the bridge domain for EPG-B.
- C. SVR-B is learned as an endpoint in EPG-B from Node-112.
- D. EPG-A and EPG-B are excluded from the preferred group.
- E. The bridge domain for EPG-B floods ARP packets.

Answer: AC

#### NEW QUESTION 212

An engineer must configure multiple EPGs on a single access port in a large Cisco ACI fabric without using VMM integration. The relevant access policies and tenant policies have been created. A single AAEP is used to configure the access port in the fabric. Which two additional steps must be taken to complete the configuration? (Choose two.)

- A. A contract must be defined between the EPGs
- B. The EPGs must be linked to the correct physical domain
- C. The EPGs must link directly to the corresponding AAEP
- D. The corresponding bridge domains must be configured in legacy mode
- E. The EPGs must be configured as static ports

Answer: BE



**Explanation:**

Attach EPG to Physical Domain (to AAEP through it) and add static ports to EPG  
Contract is needed to allow communication between two EPGs, or EPG and L3out or between two L3out

**NEW QUESTION 215**

What is a characteristic of the install all command on the cisco Nexus series switch?

- A. Upgrades only certain modules
- B. Automatically checks the image integrity
- C. Impact data plan traffic
- D. Continues the upgrade process if any step in the sequence fails

**Answer: B**

**Explanation:**

[https://www.cisco.com/c/en/us/td/docs/switches/datacenter/nexus9000/sw/7-x/upgrade/guide/](https://www.cisco.com/c/en/us/td/docs/switches/datacenter/nexus9000/sw/7-x/upgrade/guide/b_Cisco_Nexus_9000_Series_NX-OS_Software_Upgrade_and_Downgrade_Guide_Release_7x/b_Cisco_Nexus_9000_Series_NXOS_Software_Upgrade_and_Downgrade_Guide_Release_7x_chapter_010.html) b\_Cisco\_Nexus\_9000\_Series\_NX-OS\_Software\_Upgrade\_and\_Downgrade\_Guide\_Release\_7x/ b\_Cisco\_Nexus\_9000\_Series\_NXOS\_Software\_Upgrade\_and\_Downgrade\_Guide\_Release\_7x\_chapter\_010.html

install all command automatically checks the image integrity, which includes the NXOS software image. The command performs a platform validity check to verify that a wrong image is not used. [https://www.cisco.com/c/en/us/td/docs/switches/datacenter/nexus3000/sw/upgrade/7\\_x/b\\_Cisco\\_Nexus\\_3000\\_S](https://www.cisco.com/c/en/us/td/docs/switches/datacenter/nexus3000/sw/upgrade/7_x/b_Cisco_Nexus_3000_S)

**NEW QUESTION 218**

Refer to the exhibit.

```
rollback running-config checkpoint system-fm-vpc output-omitted
```

A network engineer is implementing a configuration checkpoint on a Cisco Nexus 9000 Series Switch. The configuration must skip any existing vPC configuration errors and must complete if there are any configuration errors. The engineer finished the vPC domain configuration part. Which command completes the checkpoint implementation?

- A. stop-at-first-failure
- B. atomic
- C. best-effort
- D. verbose

**Answer: C**

**NEW QUESTION 219**

A network engineer must configure FCoE on an interface of a Cisco MDS 9000 Series Switch. It should be used for mapping between VLAN 600 and VSAN 6. Drag and drop the commands from the bottom into their implementation order in the FCoE configuration. Not all commands are used.

```
switch(config)# vlan 600
switch(config-vlan)# 
switch(config)# interface ethernet 1/2
switch(config-if)# switchport mode trunk
switch(config-if)# switchport trunk 
switch(config-if)# spanning-tree port type edge trunk
switch(config)# interface vfc 6
switch(config-if)# bind interface ethernet 1/2
switch(config)# vsan database
switch(config-vsan)# 
```

bind vsan 6

vsan 6 interface vfc 6

allowed vlan 1

allowed vlan 1,600

fcoe vsan 6

vsan 6 bind interface vfc 6

- A. Mastered
- B. Not Mastered

**Answer: A**

**Explanation:**

Graphical user interface, text Description automatically generated

**NEW QUESTION 223**

An engineer must recover the Cisco UCS system The full backup is available on a backup SCP server Which set of actions recovers the configuration of the Cisco UCS Manager?

- ☒ Copy the backup file to a USB drive.  
Copy the running-config.
- ☐ Create a scheduled restore job.  
Reboot the UCS Manager.
- ☒ Create an import-config task.  
Set the action to Replace.
- ☐ Factory reset the fabric interconnect.  
Select the Restore feature.

- A. Option A  
B. Option B  
C. Option C  
D. Option D

**Answer: C**

#### NEW QUESTION 228

An engineer must configure remote authentication on a Cisco UCS system. The user password must be encrypted before it is sent to the authentication server. The company security policy requires the server to be based on an open standard. Drag and drop the UCS CLI AAA configuration commands from the left into the order in which they must be implemented on the right. Not all commands are used.

commit buffer	step 1
create server <ip address>	step 2
set key	step 3
scope radius	step 4
scope tacacs+	step 5
scope security	

- A. Mastered  
B. Not Mastered

**Answer: A**

#### Explanation:

UCS-A# scope security  
UCS-A /security # scope radius  
UCS-A /security/radius # create server radiusserv7  
UCS-A /security/radius/server\* # set key  
UCS-A /security/radius/server\* # commit-buffer

#### NEW QUESTION 229

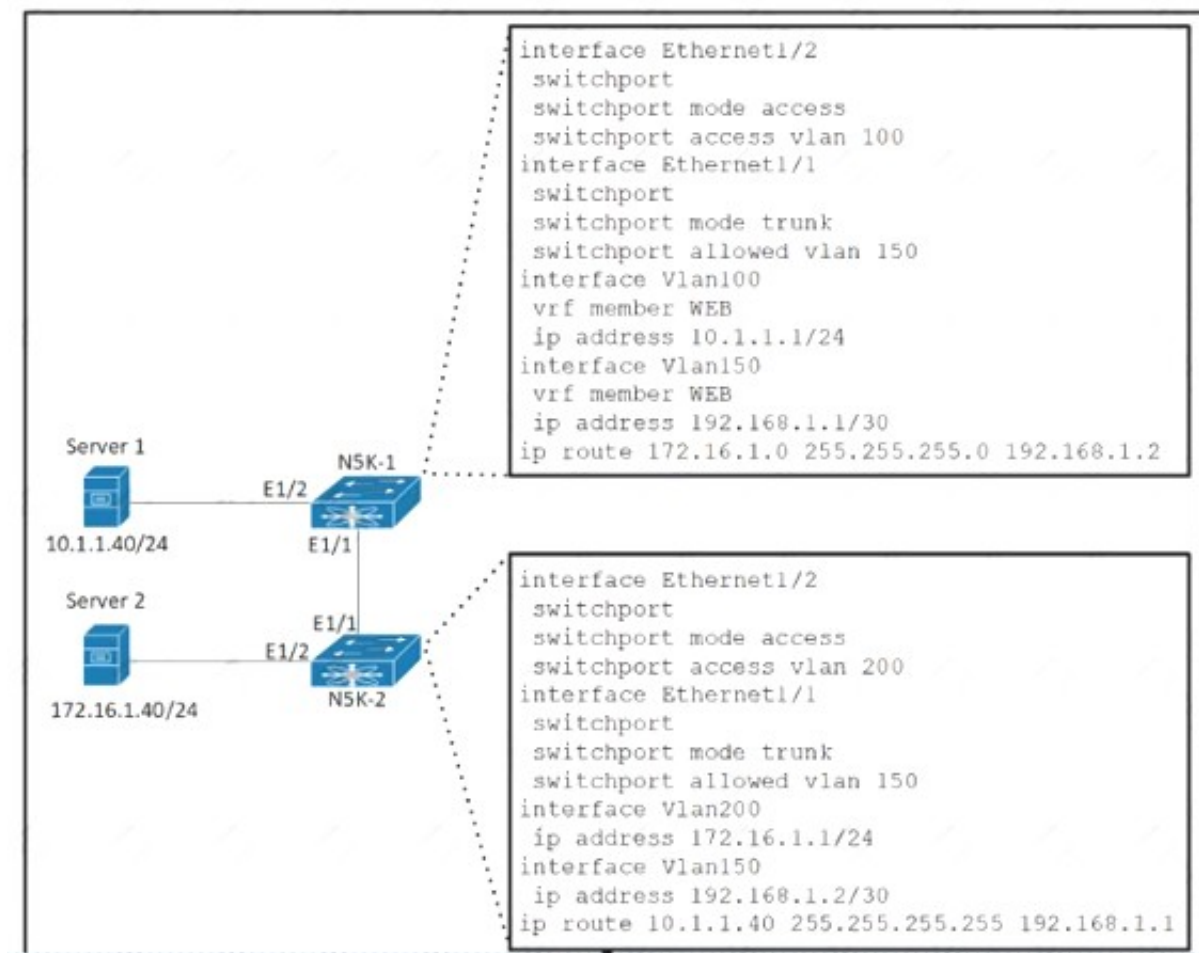
An engineer must configure OSPF routing on Cisco Nexus 9000 Series Switches. The IP subnet of the Eth 1/2 interface for both switches must be advertised via OSPF. However, these interfaces must not establish OSPF adjacency or send routing updates. The current OSPF adjacency over the interface Eth1/1 on SW1 and Eth1/1 on SW2 must remain unaffected. Which configuration must be applied to both Nexus switches to meet these requirements?

- A. interface ethernet 1/2passive-interface default  
B. Interface ethernet 1/2ip ospf network point-to-point  
C. interface ethernet 1/2ip ospf passive-interface  
D. interface ethernet 1/2no ip ospf passive-Interface

**Answer: C**

#### NEW QUESTION 234

Refer to the exhibit.



The gateway of Server 1 is in the VLAN 100 SVI on N5K-1 and the gateway of Server 2 is in the VLAN 200 SVI on N5K-2. Server 1 must connect to Server 2 using unidirectional traffic. Which action accomplishes this requirement?

- A. Add VLAN 100 and 200 to the allowed VLANs list on the Ethernet 1/1 interface on N5K-1.
- B. Assign VRF WEB membership to interfaces VLAN 150 and 200 on N5K-2.
- C. Configure access VLAN 100 on interface Ethernet 1/2 on N5K-2.
- D. Create a static route in VRF WEB for the subnet of Server 2 on N5K-1.

**Answer:** B

#### NEW QUESTION 237

A network architect wants to propose a scalable network monitoring solution in which data is repeatedly acquired from network devices. The solution must use a push model and provide close to realtime access to operational data. Which technology must be used to meet these requirements?

- A. streaming telemetry
- B. logging
- C. SNMPv3
- D. CLI-based scripting

**Answer:** A

#### Explanation:

<https://blogs.cisco.com/developer/its-time-to-move-away-from-snmp-and-cli-and-use-model-driven-telemetry>

Why Model-Driven Telemetry?

Model-Driven Telemetry is a new approach for network monitoring in which data is streamed from network devices continuously using a push model and provides near real-time access to operational statistics. You can precisely define what data you want to subscribe to using standard YANG models (YANG is a data modeling language used to model configuration and state data manipulated by the NETCONF protocol) with no CLI required. It allows network devices to continuously stream real time configuration and operating state information to subscribers. Structured data is published at a defined cadence, or on-change, based upon the subscription criteria and data type.

#### NEW QUESTION 240

A network engineer must download a firmware image from a remote location to a Cisco UCS Fabric Interconnect. The software bundle is over 232 MB in size. The file transfer must use encryption and authentication. Which protocol must be used to accomplish this goal?

- A. RDP
- B. HTTPS
- C. SCP
- D. TFTP

**Answer:** C

#### NEW QUESTION 244

An engineer must configure the remote SSH management connectivity for Cisco Nexus 9000 Series Switches to meet these requirements:

- The connectivity must be permitted from a jump host with an IP address of 10.10.10.10/24
- All switches must be permitted to connect via SSH to other devices from the subnet of 10.20.20.0/24. Which configuration set accomplishes these

requirements?

- ☒ line vty  
ip access-class acl-1 out  
ip access-class acl-2 in  
  
ip access-list acl-1  
permit ip 10.10.10.10/32 any  
ip access-list acl-2  
permit tcp 10.20.20.0/32 any
- ☐ line vty  
ip access-class acl-1 in  
ip access-class acl-2 out  
  
ip access-list acl-1  
permit tcp 10.10.10.10/32 any eq 22  
ip access-list acl-2  
permit tcp 10.20.20.0/24 any
- ☐ line vty  
ip access-class acl-1 in  
ip access-class acl-2 in  
  
ip access-list acl-1  
permit ip 10.10.10.10/32 any  
ip access-list acl-2  
permit tcp 10.20.20.0/32 any
- ☐ line vty  
ip access-class acl-1 in  
ip access-class acl-2 in  
  
ip access-list acl-1  
permit tcp 10.10.10.10/32 any eq 22  
ip access-list acl-2  
permit tcp 10.20.20.0/24 any

- A. Option A  
B. Option B  
C. Option C  
D. Option D

**Answer:** B

#### NEW QUESTION 245

An engineer must perform an initial configuration of VXLAN Tunnel End-Point functionality on the Cisco Nexus 9000 Series platform. All the necessary features are already enabled on the switch. Which configuration set must be used to accomplish this goal?



- ☐ NX9K(config)# interface loopback0  
NX9K(config-if)# ip address 10.10.10.11/32
- NX9K(config)# interface overlay0  
NX9K(config-if-overlay)# source-interface loopback0
- NX9K(config)# interface VLAN10  
NX9K(config-if-nve)# source-interface loopback0
- ☐ NX9K(config)# interface loopback0  
NX9K(config-if)# ip address 10.10.10.11/32
- NX9K(config)# interface tunnel1  
NX9K(config-if)# tunnel source loopback0
- NX9K(config)# interface ethernet1/1  
NX9K(config-if)# ip unnumbered loopback0
- ☐ NX9K(config)# interface loopback0  
NX9K(config-if)# ip address 10.10.10.11/32
- NX9K(config)# interface nve1  
NX9K(config-if-nve)# source-interface loopback0
- NX9K(config)# interface ethernet1/1  
NX9K(config-if)# ip unnumbered loopback0
- ☐ NX9K(config)# interface loopback0  
NX9K(config-if)# ip address 10.10.10.11/32
- NX9K(config)# interface VLAN10  
NX9K(config-if)# ip unnumbered loopback0
- NX9K(config)# interface nve1  
NX9K(config-if-nve)# source-interface loopback0

- A. Option A  
B. Option B  
C. Option C  
D. Option D

**Answer:** D

#### NEW QUESTION 247

Which communication method does NFS use for requests between servers and clients?

- A. XDR  
B. SSC  
C. PRC  
D. SMB

**Answer:** C

#### Explanation:

<https://www-uxsup.csx.cam.ac.uk/pub/doc/redhat/WS2.1/rhl-rg-en-7.2/ch-nfs.html>

#### NEW QUESTION 252

A network architect must redesign a data center on OSPFv2. The network must perform fast reconvergence between directly connected switches. Which two actions must be taken to meet the requirement? (Choose two)

- A. Configure all links on AREA 0.  
B. Implement a virtual link between the switches.  
C. Use OSPF point-to-point links only.  
D. Set low OSPF hello and DEAD timers.  
E. Enable BFD for failure detection.

**Answer:** CD

#### NEW QUESTION 254

Refer to the exhibit.

```
vlan 10
 fcoe vsan 10

interface ethernet 1/3
 spanning-tree port type edge trunk
 switchport mode trunk
 switchport trunk allowed vlan 1, 10
```

An engineer must configure FCoE on a Cisco Nexus switch. Which two command sets complete this configuration? (Choose two.)

- ☒ **interface vfc 10**  
bind interface fcoe-vfc 1/3  
no shut
- ☐ **vsan database**  
vsan 10 interface ethernet 1/3
- ☒ **interface fcoe 10**  
bind interface ethernet 1/3  
no shut
- ☐ **interface vfc 10**  
bind interface ethernet 1/3  
no shut
- ☐ **vsan database**  
vsan 10 interface vfc 10

- A. Option A
- B. Option B
- C. Option C
- D. Option D
- E. Option E

**Answer:** DE

**Explanation:**

```
switch# configure terminal
```

```
switch(config)# vsan database
```

```
switch(config-vsan)# vsan 2 interface vfc 4
```

This example shows how to bind a virtual Fibre Channel interface to an Ethernet interface:

```
switch# configure terminal
```

```
switch(config)# interface vfc 4
```

```
switch(config-if)# bind interface ethernet 1/4
```

[https://www.cisco.com/c/en/us/td/docs/switches/datacenter/nexus5000/sw/fcoe/421\\_n1\\_1/b\\_Cisco\\_n5k\\_fcoe\\_config\\_gd\\_re\\_421\\_n1\\_1/Cisco\\_n5k\\_fcoe\\_config\\_gd\\_re\\_421\\_n1\\_1\\_chapter4.html](https://www.cisco.com/c/en/us/td/docs/switches/datacenter/nexus5000/sw/fcoe/421_n1_1/b_Cisco_n5k_fcoe_config_gd_re_421_n1_1/Cisco_n5k_fcoe_config_gd_re_421_n1_1_chapter4.html)

#### NEW QUESTION 257

A customer undergoes an IT security review assessment. The auditor must have read-only access to the Cisco Nexus 9000 Series Switch to perform the configuration review. The customer implements this security role for the auditor:

role name audit

rule 1 permit command \* rule 2 - Output omitted username auditor password C4SAFF0B96EB0045\$c0 role audit Which configuration snippet must complete the configuration?

- A. deny command write\*
- B. permit command enable
- C. permit command show \*
- D. deny command configure terminal

**Answer:** D

#### NEW QUESTION 259

An engineer must use the Embedded Event Manager to monitor events that occur on a cisco Nexus 9000 series switch. An environment variable needs to be created so that several policies use the monitored events in their actions. The external email server is represented by IP address 10.10.10.10. which command sets the environment variable?

- A. N9k2(config)# event manager policy environment mallserver "10.10.10.10"
- B. N9k2# event manager environment mallserver "10.10.10.10"
- C. N9k2 (config-apple1)# environment mallserver "10.10.10.10"
- D. N9k2 (config)# event manager environment mallserver "10.10.10.10"

**Answer:** D

#### Explanation:

To set an Embedded Event Manager (EEM) environment variable, use the event manager environment command in global configuration mode. To disable an EEM environment variable, use the no form of this command. <https://www.cisco.com/c/en/us/td/docs/ios-xml/ios/eem/command/eem-cr-book/eem-cr-e1.html>

#### NEW QUESTION 264

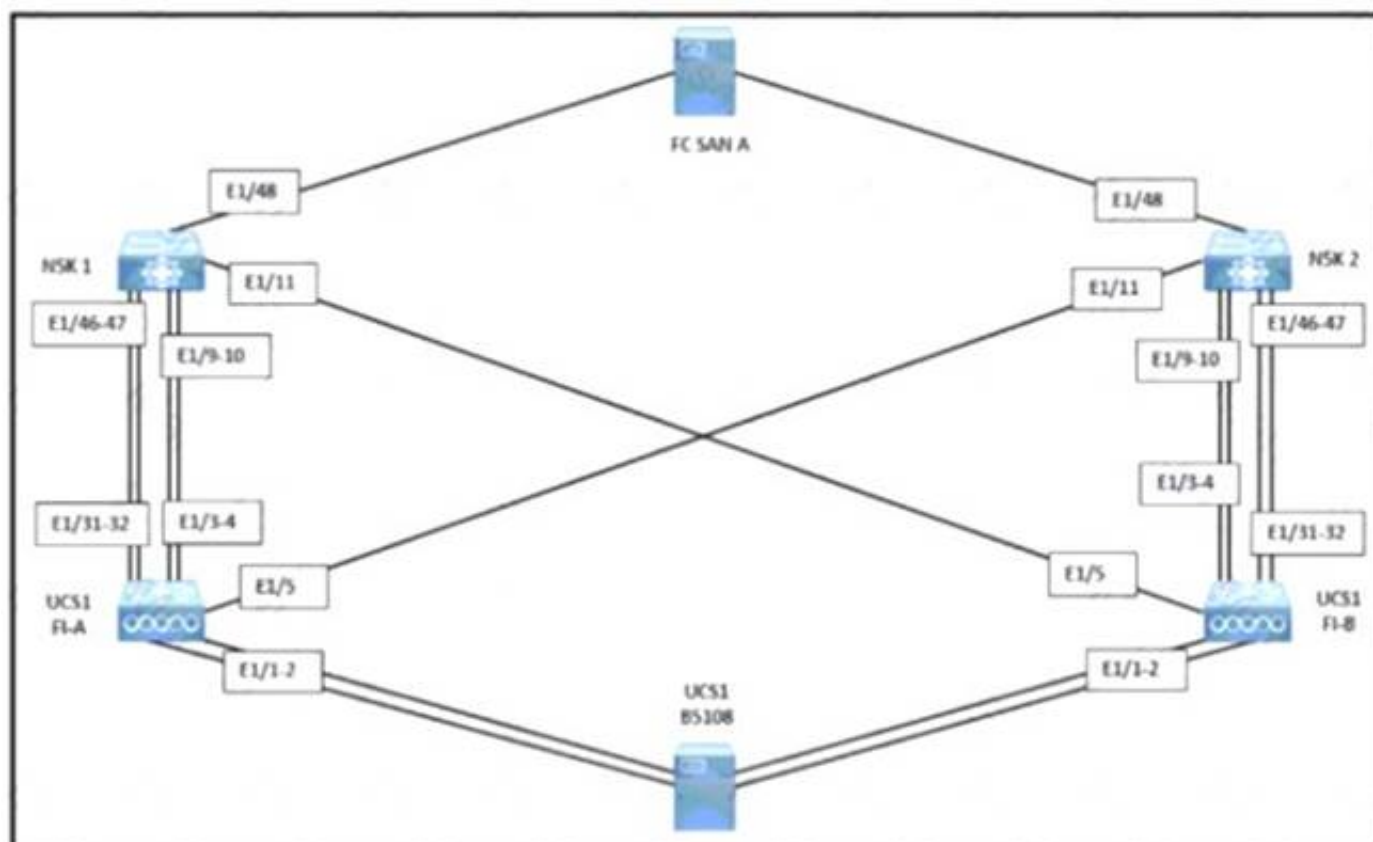
An engineer is seeking the most optimal on demand CPU performance while configuring the BIOS settings of a UCS C-series rack mount server. What setting will accomplish this goal?

- A. C0/C1 state
- B. C6 Retention
- C. C2 state
- D. C6 non-Retention

**Answer:** B

#### NEW QUESTION 265

Refer to the exhibit.



A network engineer must configure port E1/31- 32 to forward only storage server traffic of VLAN 200 on Cisco fabric interconnects A and B. Port E1/31- 32 is not reserved for any other traffic. Which port type must be configured to accomplish this goal?

- A. unified uplink
- B. uplink
- C. FCoE uplink
- D. FCoE storage

**Answer:** C

#### NEW QUESTION 269

An engineer is asked to use SaaS to manage Cisco computing. Which two items are needed to accomplish the task? (Choose two.)

- A. UCS Manager
- B. Node name/Serial Number
- C. Device/Claim ID
- D. UCS Central
- E. Intersight

**Answer:** AE

#### Explanation:

<https://www.cisco.com/c/en/us/products/collateral/cloud-systems-management/intersight/intersight-ds.html>

**NEW QUESTION 271**

An engineer is configuring a vHBA template in Cisco UCS Manager. The engineer needs to specify the logical addresses used by the vHBA and the path through which the SAU Traffic flows. Which two resources must be specified in the vHBA template? (Choose two)

- A. WWIN
- B. VLAN ID
- C. Fabric ID
- D. MAC addresses
- E. WWVPN Pool

**Answer:** AE

**NEW QUESTION 275**

Which adjacency server configuration makes two OTV edge devices located in the same site bring up the dual-site adjacency?

A)

Nexus-1:

```
interface Ethernet1/2
ip address 20.1.1.1/24
```

```
interface Overlay200
otv use-adjacency-server 20.1.1.2 unicast-only
otv join-interface Ethernet1/2
```

Nexus-2:

```
interface Ethernet1/2
ip address 20.1.1.2/24
```

```
interface Overlay200
otv use-adjacency-server 20.1.1.1 unicast-only
otv join-interface Ethernet1/2
```

B)

Nexus-1:

```
interface Ethernet1/2
ip address 20.1.1.1/24
```

```
interface Overlay200
otv adjacency-server unicast-only
otv join-interface Ethernet1/2
```

Nexus-2:

```
interface Ethernet1/2
ip address 20.1.1.2/24
```

```
interface Overlay200
otv join-interface Ethernet1/2
otv adjacency-server unicast-only
otv use-adjacency-server 20.1.1.1 unicast-only
```

C)



Nexus-1:

```
interface Ethernet1/2
 ip address 20.1.1.1/24
```

```
interface Overlay200
 otv adjacency-server unicast-only
 otv join-interface Ethernet1/2
```

Nexus-2:

```
interface Ethernet1/2
 ip address 20.1.1.2/24
```

```
intevrface Overlay200
 otv adjacency-server unicast-only
 otv join-interface Ethernet1/2
```

D)

Nexus-1:

```
interface Ethernet1/2
 ip address 20.1.1.1/24
```

```
interface Overlay200
 otv adjacency-server unicast-only
 otv join-interface Ethernet1/2
```

Nexus-2:

```
interface Ethernet1/2
 ip address 20.1.1.2/24
```

```
intevrface Overlay200
 otv adjacency-server unicast-only
 otv join-interface Ethernet1/2
```

- A. Option A
- B. Option B
- C. Option C
- D. Option D

**Answer:** B

#### NEW QUESTION 279

An engineer is automating a Cisco Nexus 9000 Series Switch using the NX-OS API. Which code snippet creates a local user called "tacuser" with an expiration date of 22 November?

A)

☐ POST http://10.91.12.14/api/mo/sys/userext.json

```
{
  "aaaUserEp": {
    "children": [
      {
        "aaaUser": {
          "attributes": {
            "allowExpired": "no",
            "expiration": "2021-11-22T00:00:00.000+00:00",
            "expires": "yes",
            "name": "tacuser",
            "pwd": "AKw47PS3:g4M410:Fs01",
            "pwdEncryptType": "clear"
          }
        }
      }
    ]
  }
}
```

B)

☐ GET http://10.12.14.91/api/mo/sys/userext/user-tacuser.json

```
{
  {
    "aaaUserEp": {
      "attributes": {
        "childAction": "add",
        "dn": "sys/userext",
        "lcOwn": "local",
        "modTs": "2021-11-22T00:00:00.000+00:00",
        "pwdSecureMode": "yes",
        "pwdStrengthCheck": "no",
        "status": "",
        "uid": "0"
      }
    }
  }
}
```

C)

☐ HEAD http://10.14.91.12/api/policymgr/mo/uni/userext.json

```
{
  "aaaUser": {
    "name": "tacuser",
    "phone": "",
    "pwd": "H97NW894SDASgQL",
    "expire": "yes",
    "aaaUserDomain": {
      "description": "",
      "name": "all",
      "rn": "userdomain-all"
    }
  }
}
```

☐ PUT http://10.91.14.12/api/policymgr/mo/uni/

```
{
  "aaaUser": {
    "email": "tacuser@cisco.com",
    "name": "tacuser",
    "createdAt": "2020-09-11T00:00:00.090210Z",
    "authorizations": {
      "authorizedZone": "VDC1",
      "expiresAt": "2021-11-22T00:00:00.000+00:00",
      "authorizedByName": "OPS",
      "authorizedByEmail": "ops@company.com"
    }
  }
}
```

- A. Option A
- B. Option B
- C. Option C

**Answer:** A

#### NEW QUESTION 282

What is the benefit of adding Cisco HyperFlex Hardware Acceleration Cards to a HyperFlex deployment?

- A. offline encryption acceleration
- B. increased network throughput
- C. GPU acceleration
- D. Increased compression efficiency

**Answer:** D

#### Explanation:

- Additional Information on HyperFlex Hardware Acceleration Cards

### Overview of HyperFlex Hardware Acceleration Cards

This chapter provides details for installation, post-installation, and troubleshooting of HyperFlex Hardware Acceleration Cards (PID: HX-PCIE-OFFLOAD-1) on HyperFlex nodes and for configuring your initial cluster. **These cards provide improved performance and compression efficiency for most storage workloads.**



#### Note

An HXDP-P Enterprise license is required for installing and configuring HyperFlex Hardware Acceleration Cards.

[https://www.cisco.com/c/en/us/td/docs/hyperconverged\\_systems/HyperFlex\\_HX\\_DataPlatformSoftware/Installation\\_VMWare\\_ESXi/3\\_5/b\\_HyperFlexSystems\\_Installation\\_Guide\\_for\\_VMware\\_ESXi\\_3\\_5/b\\_HyperFlexSystems\\_Installation\\_Guide\\_for\\_VMware\\_ESXi\\_3\\_5\\_chapter\\_01100.html#:~:text=Overview%20of%20HyperFlex%20Hardware%20Acceleration%20Cards,-This%20chapter%20provides&text=These%20cards%20provide%20improved%20performance%20and%20compression%20efficiency%20for%20most%20storage%20workloads.](https://www.cisco.com/c/en/us/td/docs/hyperconverged_systems/HyperFlex_HX_DataPlatformSoftware/Installation_VMWare_ESXi/3_5/b_HyperFlexSystems_Installation_Guide_for_VMware_ESXi_3_5/b_HyperFlexSystems_Installation_Guide_for_VMware_ESXi_3_5_chapter_01100.html#:~:text=Overview%20of%20HyperFlex%20Hardware%20Acceleration%20Cards,-This%20chapter%20provides&text=These%20cards%20provide%20improved%20performance%20and%20compression%20efficiency%20for%20most%20storage%20workloads.)

#### NEW QUESTION 283

An engineer must configure a monitoring solution for a Cisco Nexus 9000 Series Switch based data center. The solution must provide real-time insight into the network health with subscription-based monitoring. The monitoring must be initiated from the client side, and the data must be sent via encryption. Which configuration steps complete the configuration?

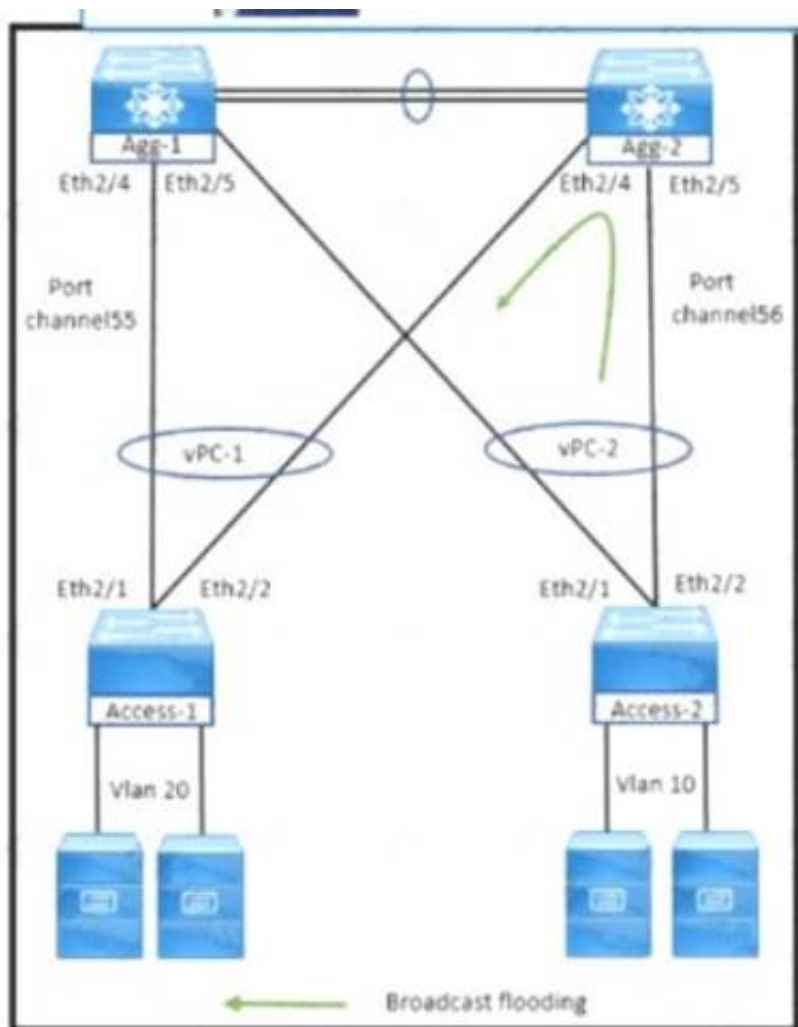
- ☐ Set the telemetry feature on the Nexus switch.  
Specify a certificate for telemetry transport.  
Configure a sensor group and destination.
- ☒ Enable GRPC on the Nexus switch.  
Generate a certificate.  
Configure gNMI inputs in Telegraf and output to InfluxDB.
- ☐ Configure Grafana on the Nexus switch.  
Specify the logging certificate.  
Enable syslog level 7 export to Grafana.
- ☐ Activate SNMPv3 on the Nexus switch.  
Set the globalEnforcePriv parameter.  
Configure an SNMP agent to poll information.

- A. Option A
- B. Option B
- C. Option C
- D. Option D

**Answer:** A

#### NEW QUESTION 285

Refer to the exhibit.



What happens to the broadcast traffic when it reaches aggregation switches?

- A. Only Agg-1 switch receives broadcast packets and does not forward to the peer link on Agg-2 switch.
- B. Agg-1 switch prevents broadcast packets received on the vPC peer link from exiting the switch on ports Eth2M and Eth2/5
- C. Agg-2 switch receives broadcast packets and stops forwarding to the peer link on Agg-1 switch.
- D. Agg1 and Agg2 switches receive broadcast packets and does not forward them to me peer link or the port channel

**Answer: D**

#### NEW QUESTION 290

A network engineer must create a script to quickly verify IP reachability for multiple hosts using ping from the Cisco NX-OS switches. The script should use the management VRF and exit the shell after execution Which script should be used to achieve this objective?

- ☐ `tclsh`  
foreach address {  
192.168.254.1  
192.168.254.2  
192.168.254.3  
192.168.254.4  
}  
{ping \$address source 192.168.254.254  
}  
tclquit
- ☐ `tclsh`  
foreach address {  
192.168.254.1  
192.168.254.2  
192.168.254.3  
192.168.254.4  
}  
{ping \$address source 192.168.254.254  
}
- ☐ `tclsh`  
foreach address {  
192.168.254.1  
192.168.254.2  
192.168.254.3  
192.168.254.4  
}  
{ping \$address vrf management source 192.168.254.254  
}
- ☐ `tclsh`  
foreach address {  
192.168.254.1  
192.168.254.2  
192.168.254.3  
192.168.254.4  
}  
{cli ping \$address vrf management source 192.168.254.254  
}  
tclquit

- A. Option A
- B. Option B
- C. Option C
- D. Option D

**Answer: D**

#### NEW QUESTION 295

An engineer must allow communication between the APIC controller and an OpenStack OpFlex agent. The agent is running on a compute node directly plugged to a Cisco ACI leaf switch. The engineer must enable and extend Infra VLAN on the port facing the compute and extend the Infra VLAN to the host. Which action must be taken to meet these requirements?



- A. Enable the Infra VLAN on the Interface Profile policy
- B. Enable the Infra VLAN on the Attachable Access Entity Profile.
- C. Add the infra VLAN via the physical domain.
- D. Add the infra VLAN via the VMM domain.

**Answer:** C

#### NEW QUESTION 297

Refer to the exhibit.

An engineer must configure a Fibre Channel device alias named TEST for a device attached to port fc1/9 of a Cisco Nexus Series Switch. Which command set completes the configuration?

A)

```
SITE-A-MDS-Fabric-A# configure terminal
SITE-A-MDS-Fabric-A (config)# device-alias database
SITE-A-MDS-Fabric-A (config-device-alias-db)# device-alias name TEST pwwn 50:00:14:42:d0:0c:f5:20
SITE-A-MDS-Fabric-A (config-device-alias-db)# device-alias commit
```

B)

```
SITE-A-MDS-Fabric-A# configure terminal
SITE-A-MDS-Fabric-A (config)# device-alias database
SITE-A-MDS-Fabric-A (config-device-alias-db)# device-alias name TEST pwwn 50:00:14:42:d0:0c:f5:20
SITE-A-MDS-Fabric-A (config-device-alias-db)# exit
```

C)

```
SITE-A-MDS-Fabric-A# configure terminal
SITE-A-MDS-Fabric-A (config)# device-alias database
SITE-A-MDS-Fabric-A (config-device-alias-db)# device-alias name TEST pwwn 50:00:14:40:47:b0:0c:f5
SITE-A-MDS-Fabric-A (config-device-alias-db)# exit
```

D)

```
SITE-A-MDS-Fabric-A# device-alias database
SITE-A-MDS-Fabric-A (device-alias-db)# device-alias name TEST pwwn 50:00:14:40:47:b0:0c:f5
SITE-A-MDS-Fabric-A (config-device-alias-db)# device-alias commit
```

- A. Option A
- B. Option B
- C. Option C
- D. Option D

**Answer:** B

#### NEW QUESTION 301

An engineer is converting a Cisco MDS switch to support NPIV mode. What should be considered when implementing the solution?

- A. It must be enabled on VSAN 1 only.
- B. It must be enabled globally on all VSANs.
- C. It requires mapping of external interface traffic.
- D. It requires the FLOGI database to be disabled.

**Answer:** B

#### Explanation:

[https://www.cisco.com/c/en/us/td/docs/switches/datacenter/mds9000/sw/5\\_0/configuration/guides/int/nxos/cli\\_i](https://www.cisco.com/c/en/us/td/docs/switches/datacenter/mds9000/sw/5_0/configuration/guides/int/nxos/cli_i)

#### NEW QUESTION 302

A customer has a requirement to deploy a cloud service and needs to have full control over the underlying OS, data and application. Which cloud model meets this requirement?

- A. PaaS
- B. MaaS
- C. IaaS
- D. SaaS

**Answer:** C

#### Explanation:

Traditional IT is responsible for Application, Data, Runtime, Middleware, OS, Virtualization, Servers, Storage, Networking. IaaS = Infrastructure as a Service - is responsible for OS, Virtualization, Servers, Storage, Networking. SaaS = Software as a Service - Software deployed by the cloud provider - is responsible for nothing. PaaS = Platform as a Service - Software can be deployed by the customer building their own application | is responsible for Data and Application.

#### NEW QUESTION 306

A network engineer must configure a Fibre Channel interface on the Cisco MDS 9000 Series Switch The configuration must meet these requirements

- The interface must be disabled when the bit errors threshold is exceeded
  - Buffer-to-buffer credits must be set to the maximum value
  - The interface must have full bandwidth allocated for its port group
- Which command set configures a Fibre Channel interface that meets these requirements?

- A.
- ```
interface fc1/1
switchport bit-errors
switchport fcrxbcredit 220 mode Fx
switchport rate-mode dedicated
```
- B.
- ```
interface fc1/1
switchport ignore bit-errors
switchport fcrxbcredit 255 mode Fx
no switchport rate-mode
```
- C.
- ```
interface fc1/1
no switchport ignore bit-errors
switchport fcrxbcredit 255 mode Fx
switchport rate-mode dedicated
```
- D.
- ```
interface fc1/1
no switchport bit-errors
switchport fcrxbcredit 220 mode Fx
no switchport rate-mode
```

**Answer:** A

#### NEW QUESTION 308

Drag and drop the characteristics from the left onto the NAS protocols on the right. Some characteristics are used more than once

used to boot VHDX files	<b>NFS</b> <div></div> <div></div> <div></div>
used to boot VMDK files	
uses lease-based model for file locking	
used to provide shared storage for hypervisors	
	<b>SMB/CIFS</b> <div></div> <div></div>

- A. Mastered  
B. Not Mastered

**Answer:** A

#### Explanation:

Diagram Description automatically generated

NFS:

- Used to boot VMDK files
  - Uses lease-based model for file locking
  - Used to provide shared storage for hypervisors
- SMB/CIFS:
- Used to boot VHDX files
  - Used to provide shared storage for hypervisors

#### NEW QUESTION 311

A network administrator must create a Linux container on a Cisco Nexus Series Switch. The container requires 10 percent of the CPU of the switch and 1024 MB of RAM to run successfully. Which task provides the necessary resources?

- A. Edit the container properties with the guestshell run command.  
B. Increase the compute resources with the guestshell resize command.  
C. Enable the Bash shell of the switch with the feature bash command  
D. Modify resource allocation with the virtual-service resize command.

**Answer:** B



### NEW QUESTION 313

An administrator is implementing DCNM so that events are triggered when monitored traffic exceeds the configured present utilization threshold. The requirement is to configure a maximum limit of 39860437 bytes that applies directly to the statistics collected as a ratio of the total link capacity. Which DCNM performance monitoring configuration parameter must be implemented to achieve this result?

- A. Absolution Values
- B. Baseline
- C. Util%
- D. Per port Monitoring

**Answer:** A

### NEW QUESTION 315

An engineer is implementing security on the Cisco MDS 9000 switch. Drag drop the descriptions from the left onto the correct security features on the right.

can be distributed via fabric services	<b>Fabric Binding</b>
uses the Exchange Fabric Membership Data protocol	Target 1
allows a preconfigured set of Fibre Channel devices to logically connect to SAN ports	Target 2
prevent unauthorized switches from joining the fabric or disrupting current fabric operations	<b>Port Security</b>
	Target 3
	Target 4

- A. Mastered
- B. Not Mastered

**Answer:** A

### Explanation:

can be distributed via fabric services	<b>Fabric Binding</b>
uses the Exchange Fabric Membership Data protocol	prevent unauthorized switches from joining the fabric or disrupting current fabric operations
allows a preconfigured set of Fibre Channel devices to logically connect to SAN ports	uses the Exchange Fabric Membership Data protocol
prevent unauthorized switches from joining the fabric or disrupting current fabric operations	<b>Port Security</b>
	can be distributed via fabric services
	allows a preconfigured set of Fibre Channel devices to logically connect to SAN ports

### NEW QUESTION 317

Refer to the exhibit.

```
import time
import os

date= time.strftime('%Y%m%d')
file= ('fusion-config_') + date
cli.execute ('copy running-config ftp://10.183.249.182/fusionSW/' + file)
exit()
```

What is the result of executing this python code?

- A. It backs up Cisco switches to Cisco Prime infrastructure.
- B. It sends the switch configuration to Cisco TAC.
- C. It sends a Cisco device backup to a remote destination.
- D. It schedules a backup on a Cisco switch using EEM.

**Answer:** C

### NEW QUESTION 319

An engineer has a primary fabric that is named UCS-A and a secondary fabric that is named UCS-B. A certificate request that has a subject name of sjc2016 for a keyring that is named kr2016 needs to be created. The cluster IP address is 10.68.68.68. Which command set creates this certificate request?

- A. UCS-A # scope keyring kr2016UCS-A /keyring # create certreq 10.68.68.68 sjc2016UCS-A /keyring\* # commit-buffer
- B. UCS-B # scope keyring kr2016UCS-B /keyring # create certreq ip 10.68.68.68 subject-name sjc2016UCS-B /keyring\* # commit-both
- C. UCS-B# scope securityUCS-B /security # scope keyring kr2016UCS-B /security/keyring # set certreq 10.68.68.68 sjc2016UCS-B /security/keyring\* # commit-both
- D. UCS-A# scope securityUCS-A /security # scope keyring kr2016UCS-A /security/keyring # create certreq ip 10.68.68.68 subject-name sjc2016UCS-A /security/keyring\* # commit-buffer

**Answer: D**

**Explanation:**

[https://www.cisco.com/c/en/us/td/docs/unified\\_computing/ucs/ucs-manager/CLI-User-Guides/Admin-Management/4-0/b\\_Cisco\\_UCS\\_Manager\\_CLI\\_Administration\\_Mgmt\\_Guide\\_4-0/b\\_Cisco\\_UCS\\_Manager\\_CLI\\_Administration\\_Mgmt\\_Guide\\_4-0\\_chapter\\_0110.html](https://www.cisco.com/c/en/us/td/docs/unified_computing/ucs/ucs-manager/CLI-User-Guides/Admin-Management/4-0/b_Cisco_UCS_Manager_CLI_Administration_Mgmt_Guide_4-0/b_Cisco_UCS_Manager_CLI_Administration_Mgmt_Guide_4-0_chapter_0110.html)

**NEW QUESTION 323**

What is a characteristic of the NFS protocol?

- A. It is used for booting Cisco UCS B-Series servers.
- B. It is used to access a storage array at a block level.
- C. It uses UDP and HTTP as its transport.
- D. It uses remote procedure calls with TCP/IP for transport.

**Answer: D**

**NEW QUESTION 325**

An engineer is performing an ISSU upgrade on the Cisco MDS 9000 Series Switch. What is the impact on the control plane of the switch?

- A. It remains down until the next reboot.
- B. It remains up throughout the update.
- C. It remains down for more than 80 seconds but less than 140 seconds.
- D. It is down for less than 80 seconds.

**Answer: D**

**NEW QUESTION 330**

Refer to the exhibit.

```
MDSSWITCH# config terminal
MDSSWITCH(config)# fcip profile 1
MDSSWITCH(config-profile)# ip address 192.0.1.10
MDSSWITCH(config-profile)# port 5000
MDSSWITCH(config-profile)# tcp max-bandwidth-mbps 5000
min-available-bandwidth-mbps 4000 round-trip-time-ms 1
MDSSWITCH(config-profile)# exit
MDSSWITCH(config)# interface fcip 1
MDSSWITCH(config-if)# use-profile 1
MDSSWITCH(config-if)# peer-info ipaddr 192.0.1.11
MDSSWITCH(config-if)# tcp-connections 1
MDSSWITCH(config-if)# ip-compression mode2
MDSSWITCH(config-if)# no shutdown
MDSSWITCH(config-if)# exit
MDSSWITCH(config)# interface ipStorage 1/1
MDSSWITCH(config-if)# ip address 192.0.1.10 255.255.255.0
MDSSWITCH(config-if)# switchport mtu 2500
MDSSWITCH(config-if)# no shutdown
MDSSWITCH(config-if)# end
```

An engineer configures FCIP on a Cisco MDS 9000 Series switch. What is the result of implementing the configuration?

- A. The switch attempts to make two TCP connections
- B. Compression is performed by using hardware
- C. Mode2 is enabled by default.
- D. Compression is performed by using software.

**Answer: B**

**Explanation:**

[https://www.cisco.com/c/en/us/td/docs/switches/datacenter/mds9000/sw/8\\_x/config/ip\\_services/ipsvc/cfcip.html](https://www.cisco.com/c/en/us/td/docs/switches/datacenter/mds9000/sw/8_x/config/ip_services/ipsvc/cfcip.html)

**NEW QUESTION 333**

A SAN administrator must Implement Infrastructure monitoring for the Fibre Channel storage environment. The storage environment consists of a standalone Cisco Nexus 9000 Series Switch and Cisco MDS 9000 Series Switches. The goal is to be able to visualize the SAN support VXLAN overlays and identify storage slow drain issues. Which monitoring solution accomplishes this task?

- A. Cisco Prime Infrastructure



- B. Cisco DCNM
- C. Cisco APIC
- D. Cisco Intersight

**Answer:** B

#### NEW QUESTION 334

An engineer must perform a POAP deployment of a Cisco Nexus 9000 Series Switch. The switch must automatically receive its software image and configuration file upon power-on. Also, only UDP is permitted between the Nexus 9000 switch and the server that hosts the Cisco NX-OS system images. Which set of actions completes the configuration?

- A. Enable option 67. Define TFTP transfer protocol.
- B. Enable option 43. Define HTTP transfer protocol.
- C. Enable option 46. Define TFTP transfer protocol.
- D. Enable option 35. Define HTTP transfer protocol.

**Answer:** A

#### NEW QUESTION 336

A UCS B-Series server located in B5108 chassis 1 slot 1 is currently unavailable. The server needs to be associated with a specific service profile when it becomes available. Which associate service profile option should be selected to accomplish this goal?

- A. server pool
- B. server
- C. custom server
- D. restrict migration

**Answer:** C

#### Explanation:

[https://www.cisco.com/en/US/docs/unified\\_computing/ucs/sw/gui/config/guide/141/UCSM\\_GUI\\_Configuration\\_Guide\\_141\\_chapter28.html](https://www.cisco.com/en/US/docs/unified_computing/ucs/sw/gui/config/guide/141/UCSM_GUI_Configuration_Guide_141_chapter28.html)

Text, application Description automatically generated with medium confidence

Associating a Service Profile with a Server or Server Pool

Follow this procedure if you did not associate the service profile with a blade server or server pool when you created it, or to change the blade server or server pool with which a service profile is associated.

#### Procedure

- Step 1** In the Navigation pane, click the Servers tab.
- Step 2** On the Servers tab, expand Servers > Service Profiles.
- Step 3** Expand the node for the organization that contains the service profile that you want to associate with a new server or server pool.

If the system does not include multi-tenancy, expand the root node.

- Step 4** Right-click the service profile you want to associate with a server and select Change Service Profile Association.
- Step 5** In the Associate Service Profile dialog box, select one of the following options:

Option	Description
Server Pool	Select a server pool from the drop-down list. Cisco UCS Manager assigns a server from this pool to the service profile. Continue with Step 7.
Server	Navigate to the desired available server in the navigation tree and select the server which will be assigned to the service profile. Continue with Step 7.
Custom Server	Specifies the chassis and slot that contains the server that will be assigned to the service profile. If the server is not in the slot or is otherwise unavailable, the service profile will be associated with the server when it becomes available. Continue with Step 6.

- Step 6** If you chose Custom Server, do the following:
  - a. In the Chassis Id field, enter the number of the chassis where the selected server is located.
  - b. In the Server Id field, enter the number of the slot where the selected server is located.

#### NEW QUESTION 337

Refer to the exhibit.

```

ACI-Leaf1# show ip route vrf DATACENTER:DC

10.20.1.0/24, ubest/mbest: 1/o, attached, direct, pervasive

    *via 10.0.8.65%overlay-1, [1/o], 4w3d, static

172.16.100.0/24, ubest/mbest: 1/o

    *via 10.1.168.95%overlay-1, [200/5], 3w0d, bgp-132, internal, tag 132 (mpls-vpn)

172.16.99.0/24, ubest/mbest: 1/o

    *via 10.0.1.14, [20/0], 3w0d, bgp-132, external, tag 200
  
```

Which two statements describe the routing table of the leaf switch? (Choose two.)

- A. The next hop 10.0.8.65 for route 10.20.1.0/24 is the TEP address of a border leaf in ACI.
- B. The next hop 10.0.1.14 for route 172.16.99.0/24 is the TEP address of a border leaf in ACI.
- C. The next hop 10.1.168.95 for route 172.16.100.0/24 is the TEP address of a border leaf in ACI.
- D. 172.16.100.0/24 is a BD subnet in ACI.
- E. 10.20.1.0/24 is a BD subnet in ACI.

**Answer:** CE

#### NEW QUESTION 338

An engineer must configure an LACP port channel on two Cisco Nexus 7000 Series Switches. The interface e1/2 must be a hot-standby link that initiates negotiation with other ports. Drag and drop the commands from the right onto the blanks in the configuration on the left. Not all commands are used.

<pre> configure terminal feature interface Ethernet 1/2 switchport channel-group 2 interface Ethernet 1/3 switchport channel-group 2 mode active lacp port   </pre>	<div>mode active</div> <div>lacp</div> <div>priority 1</div> <div>mode passive</div> <div>priority 65534</div> <div>mode on</div>
---	---

- A. Mastered
- B. Not Mastered

**Answer:** A

**Explanation:**

<pre> configure terminal feature lacp interface Ethernet 1/2 switchport channel-group 2 mode active interface Ethernet 1/3 switchport channel-group 2 mode active lacp port priority 1   </pre>	<div>mode active</div> <div>lacp</div> <div>priority 1</div> <div>mode passive</div> <div>priority 65534</div> <div>mode on</div>
---	---

#### NEW QUESTION 341

What is a benefit of using the Cisco UCS Lightweight upgrade feature?

- A. Security updates are scheduled with the next reboot of the fabric interconnects.
- B. All servers are rebooted to push the latest updates.
- C. The firmware version of a component is updated only when it has been modified.
- D. A soft reboot is available for the fabric interconnects.

**Answer:** C

#### NEW QUESTION 342

Refer to the exhibit.

```
switch(config)# feature dhcp
switch(config)# ip dhcp snooping
switch(config)# service dhcp
switch(config)# ip dhcp snooping vlan 100,200,250-252
switch(config)# ip dhcp relay information option
```

Which action is taken to ensure that the relay agent forwards the DHCP BOOTREQUEST packet to a DHCP server?

- A. Configure the interface of the DHCP server as untrusted.
- B. Configure the IP address of the DHCP server.
- C. Enable the DHCP relay agent.
- D. Verify the DHCP snooping bindings.

**Answer:** B

**Explanation:**

[https://www.cisco.com/c/en/us/td/docs/switches/datacenter/sw/4\\_0/dcnm/security/configuration/guide/sec\\_dcnm](https://www.cisco.com/c/en/us/td/docs/switches/datacenter/sw/4_0/dcnm/security/configuration/guide/sec_dcnm) Text Description automatically generated

## Configuring a DHCP Server Address on a VLAN Interface

You can configure a DHCP server IP address on a VLAN interface (sometimes referred to as a switched virtual interface or SVI). When an inbound DHCP BOOTREQUEST packet arrives on the VLAN interface, the relay agent forwards the packet to the IP address specified.

### NEW QUESTION 347

An engineer must apply AAA configuration on a Cisco MDS 9000 Series Switch. The solution must meet these conditions:

- It must use a challenge-response authentication protocol that uses MD5 hashing with an incrementally changing identifier
- The RADIUS configuration must t>e automatically shared with other MDS switches in the environment.

The RADIUS server is already defined. Which command set completes the configuration?

- ☐ aaa authentication login pap enable  
distribute radius  
radius-server host 10.8.8.0 auth-port 1821
- ☒ aaa authentication login mschapv2 enable  
radius propagate  
radius authentication port 1821
- ☐ aaa authentication login chap enable  
radius distribute  
radius commit
- ☐ aaa authentication login mschap enable  
radius commit  
radius-server host 10.8.8.0

- A. Option A
- B. Option B
- C. Option C
- D. Option D

**Answer:** C

### NEW QUESTION 351

An engineer must integrate Cisco ACI with a VMware vSphere environment. The requirement is to use a VMware Distributed Virtual Switch and to assign the encapsulation VLAN of the EPG from the VLAN pool. Which configuration set accomplishes this goa?

- A. Create a VMM domain association under the EPGs Create a VLAN pool with static allocated VLANs.
- B. Create a physical domain association under the EPGs Create a VLAN pool with static allocated VLANs.
- C. Create a physical domain association under the EPG
- D. Create a VLAN pool with oVnarmc allocated VLANs
- E. Create a VMM domain association under the EPGs Create a VLAN pool with dynamic allocated VLANs.

**Answer:** D

### NEW QUESTION 353

An engineer is implementing FCoE. Which aspect of DCBXP on a Cisco Nexus switch affects this implementation?

- A. It uses the Cisco Fabric Services protocol to exchange parameters between two peer links.
- B. It always is enabled on 10/100-Mbps native Ethernet ports.
- C. It provides the authentication of peers on the Cisco Nexus switch.
- D. It requires that LLDP transmit and LLDP receive are enabled on the FCoE interface.

**Answer:** D



**Explanation:**

The Data Center Bridging Exchange Protocol (DCBXP) is an extension of LLDP. It is used to announce, exchange, and negotiate node parameters between peers. DCBXP parameters are packaged into a specific DCBXP TLV. This TLV is designed to provide an acknowledgement to the received LLDP packet. DCBXP is enabled by default, provided LLDP is enabled. DCBXP is disabled on ports where LLDP transmit or receive is disabled.  
[https://www.cisco.com/c/en/us/td/docs/switches/datacenter/nexus5000/sw/layer2/503\\_n2\\_1/b\\_Cisco\\_n5k\\_layer2](https://www.cisco.com/c/en/us/td/docs/switches/datacenter/nexus5000/sw/layer2/503_n2_1/b_Cisco_n5k_layer2)

**NEW QUESTION 355**

Refer to the exhibit.

```
Step 20 Enter no (no is the default) if you are satisfied with the configuration.

The following configuration will be applied:

switchname CiscoMDS
interface mgmt0
  ip address 192.168.10.10
  subnetmask 255.255.255.0
  no shutdown
ip default-gateway 192.168.10.1
telnet server enable
no ssh server enable
no system default switchport shutdown
system default switchport trunk mode on
no zone default-zone permit vsan 1-4093
zoneset distribute full vsan 1-4093
Would you like to edit the configuration? (yes/no) [n]: no

Step 21 Enter yes (yes is default) to use and save this configuration.

Use this configuration and save it? (yes/no) [y]: yes
```

An engineer is configuring a Cisco MDS 9000 Series Switch for the first time. After the initial setup process, the name server at IP 192.168.10.11 is missing from the configuration. Which set of actions completes the configuration?

- A. Enter no at step 21 and reinitialize the install
- B. Press the Esc key to access ROMMON mode.
- C. Enter no at step 21 and reload the switch
- D. Configure the advanced IP options.
- E. Enter yes at step 21 to edit the configuration
- F. Add the line `dns-server 192.168.10.11`.
- G. Enter yes at step 21 and log in
- H. Modify the startup configuration DNS

**Answer: B**

**NEW QUESTION 357**

An engineer is configuring a vHBA template in UCS Manager. The engineer needs to specify the logical addresses used by the vHBA and the path through which the SAN traffic flows. Which two resources must be specified in the vHBA template? (Choose two.)

- A. MAC addresses
- B. WWPNPool
- C. WWNN
- D. VLAN ID
- E. Fabric ID

**Answer: BE**

**Explanation:****vNIC and vHBA Templates**

vNIC and vHBA resources are always associated with specific FIs (A-side or B-side fabric interconnect). A typical Service Profile has at least two vNICs and two vHBAs; one bound to each side. vNIC (or vHBA) templates can be used to encapsulate both the MAC address pool (or WWPN pool) association as well as the fabric ID.

**Best Practice: vNIC and vHBA Templates**

Create reusable vNIC and vHBA templates in which termination is either reflected in the name (e.g., "fc0-A") or through well-accepted conventions (e.g., even interface to A side, and odd interface to B side).

vNIC templates should be thought of as application-specific network profiles that include important security definitions, such as VLAN mappings, as shown in Figure 6.

[https://www.cisco.com/c/en/us/products/collateral/servers-unified-computing/ucs-manager/whitepaper\\_c11-697](https://www.cisco.com/c/en/us/products/collateral/servers-unified-computing/ucs-manager/whitepaper_c11-697)

**NEW QUESTION 361**

An engineer must remove the running configuration of a Cisco Nexus 9000 Series Switch and replace it with a backup file without restarting the switch. The backup file is stored on an SFTP server that is reachable via the An engineer must remove the running configuration mgmt0 interface Which set of commands accomplishes this task?



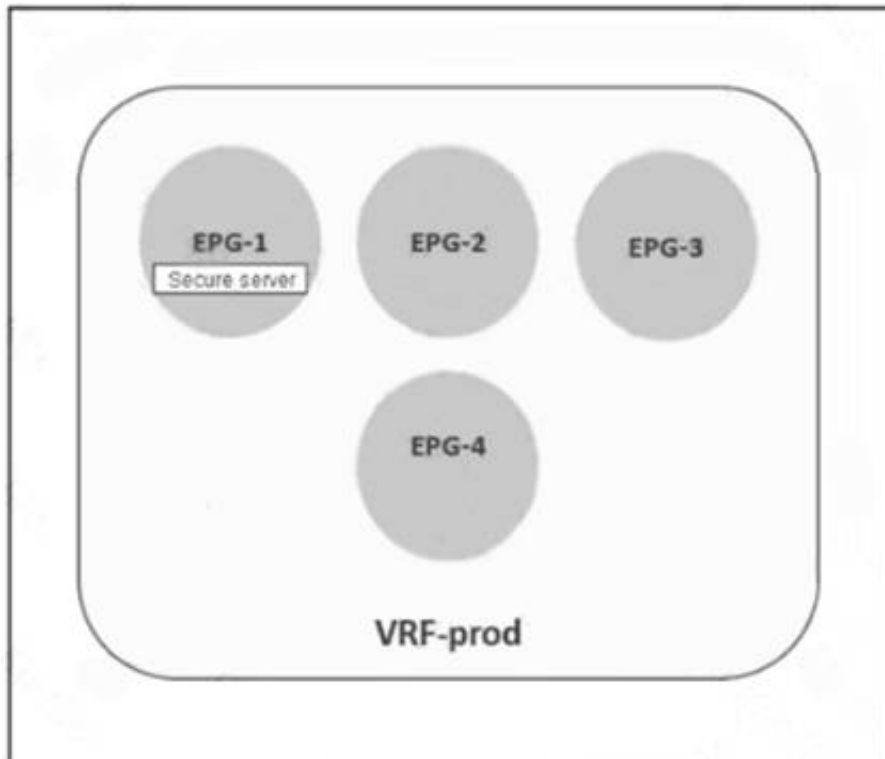
- ☐ copy sftp://admin@192.168.10.100/backup.cfg startup-config vrf mgmt0  
copy startup-config running-config
- ☐ configure replace sftp://admin@192.168.10.100/backup.cfg vrf mgmt0  
copy running-config bootflash://startup-config
- ☐ copy sftp://admin@192.168.10.100/backup.cfg bootflash:///backup.cfg vrf management  
configure replace bootflash:///backup.cfg
- ☐ copy sftp://admin@192.168.10.100/backup.cfg startup-config vrf management  
reload in 10

- A. Option A
- B. Option B
- C. Option C
- D. Option D

**Answer: C**

#### NEW QUESTION 363

Refer to the exhibit.



A secure server that provides services to EPG-2 must be placed in EPG-1. The remaining EPGs—EPG-2, EPG-3, and EPG-4—must communicate without any contracts. Which set of actions accomplishes this goal?

- ☒ Exclude EPG-2, EPG-3, and EPG-4 from the preferred group.  
Configure a contract between EPG-2 and EPG-3.
- ☐ Include EPG-2, EPG-3, and EPG-4 in the preferred group.  
Configure a contract between EPG-1 and EPG-2.
- ☐ Include EPG-1 and EPG-2 in the preferred group.  
Configure a contract between EPG-2 and EPG-3.
- ☐ Exclude EPG-2, EPG-3, and EPG-4 from the preferred group.  
Configure a contract between EPG-1 and EPG-3.

- A. Option A
- B. Option B
- C. Option C
- D. Option D

**Answer: B**

#### NEW QUESTION 365

Refer to the exhibit.

```
N9K-1# show running-config interface Ethernet1/1
switchport access vlan 10
spanning-tree port type edge
switchport port-security aging time 33
switchport port-security maximum 3
switchport port-security mac-address sticky
switchport port-security

N9K-1# show mac address-table interface ethernet 1/1
Legend:
* - primary entry, G - Gateway MAC, (R) - Routed MAC, O - Overlay MAC
age - seconds since last seen, + - primary entry using vPC Peer-Link,
(T) - True, (F) - False, C - ControlPlane MAC, ~ - vsan
VLAN    MAC Address    Type    age    Secure NTFY Ports
-----+-----+-----+-----+-----+-----+-----
* 10     0050.7966.6801  secure  -      T      F      Eth1/1
* 10     0050.7966.6802  secure  -      T      F      Eth1/1
* 10     0050.7966.6803  secure  -      T      F      Eth1/1
```

An engineer configures port security on a Cisco Nexus 9000 Series Switch. The requirement is to prevent any newly learned MAC addresses from forwarding traffic on the interface. Also, the already learned MAC addresses must not be affected by the changes. Which configuration meets these requirements?

- A. switchport port-security violation shutdown
- B. switchport port-security violation isolate
- C. switchport port-security violation protect
- D. switchport port-security violation restrict

**Answer:** C

#### NEW QUESTION 366

A network engineer needs a tool to automate the provisioning of Cisco UCS Service Profiles. The administrator has limited programming knowledge but is skilled with scripting tools. The tool must include existing support for Cisco UCS configuration. Additionally, the administrator will eventually use the solution to manage Cisco UCS C-Series Rack Servers. Which tool meets these requirements?

- A. Cisco DCNM
- B. Python scripts
- C. PowerShell
- D. Bash scripts

**Answer:** C

#### NEW QUESTION 371

Which two components should be checked when a Cisco Nexus 9000 Series Switch fails to boot using POAP? (Choose two.)

- A. image noted in the script file against switch bootflash
- B. DHCP server to bootstrap IP information
- C. script signed with security key
- D. TFTP server that contains the configuration script
- E. POAP feature license

**Answer:** BD

#### Explanation:

[https://www.cisco.com/c/en/us/td/docs/switches/datacenter/nexus9000/sw/7-x/troubleshooting/guide/b\\_Cisco\\_Nexus\\_9000\\_Series\\_NX-OS\\_Troubleshooting\\_Guide\\_7x/b\\_Cisco\\_Nexus\\_9000\\_Series\\_NXOS\\_Troubleshooting\\_Guide\\_7x\\_chapter\\_01100.html](https://www.cisco.com/c/en/us/td/docs/switches/datacenter/nexus9000/sw/7-x/troubleshooting/guide/b_Cisco_Nexus_9000_Series_NX-OS_Troubleshooting_Guide_7x/b_Cisco_Nexus_9000_Series_NXOS_Troubleshooting_Guide_7x_chapter_01100.html)

[https://www.cisco.com/c/en/us/td/docs/switches/datacenter/nexus9000/sw/7-x/fundamentals/configuration/guide/b\\_Cisco\\_Nexus\\_9000\\_Series\\_NX-OS\\_Fundamentals\\_Configuration\\_Guide\\_7x/b\\_Cisco\\_Nexus\\_9000\\_Series\\_NX-OS\\_Fundamentals\\_Configuration\\_Guide\\_7x\\_chapter\\_0100.html](https://www.cisco.com/c/en/us/td/docs/switches/datacenter/nexus9000/sw/7-x/fundamentals/configuration/guide/b_Cisco_Nexus_9000_Series_NX-OS_Fundamentals_Configuration_Guide_7x/b_Cisco_Nexus_9000_Series_NX-OS_Fundamentals_Configuration_Guide_7x_chapter_0100.html)

#### NEW QUESTION 375

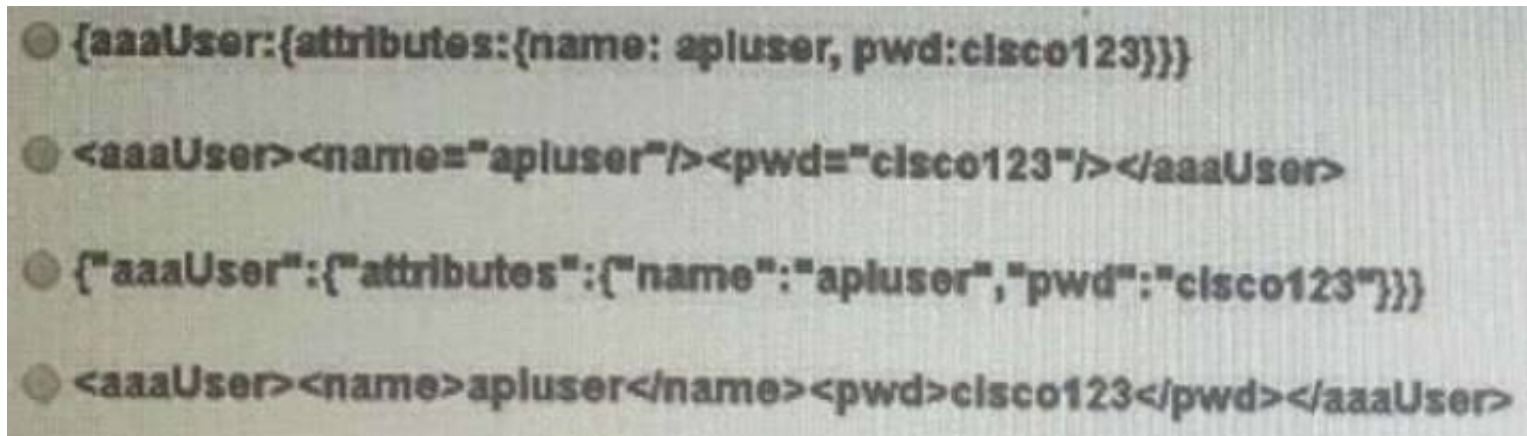
A small remote office is set to connect to the regional hub site via NSSA ASBR. Which type of LSA is sent to the remote office OSPF area?

- A. type 7 LSA
- B. type 3 LSA
- C. type 1 LSA
- D. type 5 LSA

**Answer:** A

#### NEW QUESTION 377

An engineer is using REST API calls to configure the cisco APIC. Which data structure must be used within a post message to receive a login token?



- A. Option A
- B. Option B
- C. Option C
- D. Option D

**Answer: C**

**Explanation:**

- **aaaListDomains** –Sent as a GET message, this method returns a list of valid AAA login domains. You can send this message without logging in.

You can call the authentication methods using this syntax, specifying either JSON or XML data structures:

```
{ http | https } :// host [:port] /api/ methodName . { json | xml }
```

This example shows a user login message that uses a JSON data structure:

```
POST https://apic-ip-address/api/aaaLogin.json
```

```
{
  "aaaUser" : {
    "attributes" : {
      "name" : "georgewa",
      "pwd" : "paSSword1"
    }
  }
}
```

[https://www.cisco.com/c/en/us/td/docs/switches/datacenter/aci/apic/sw/2-x/rest\\_cfg/2\\_1\\_x/b\\_Cisco\\_APIC\\_REST\\_API\\_Configuration\\_Guide/b\\_Cisco\\_APIC\\_REST\\_API\\_Configuration\\_Guide\\_chapter\\_0](https://www.cisco.com/c/en/us/td/docs/switches/datacenter/aci/apic/sw/2-x/rest_cfg/2_1_x/b_Cisco_APIC_REST_API_Configuration_Guide/b_Cisco_APIC_REST_API_Configuration_Guide_chapter_0)

#### NEW QUESTION 381

A bridge domain is being extended out of a Cisco ACI fabric. Between which of these components are policies used to identify the connectivity between Endpoint Groups and the external connection?

- A. an external bridge domain and an external routed domain
- B. internal contracts and external contracts
- C. internal EPGs and external EPGs
- D. L2Out and L3Out

**Answer: D**

#### NEW QUESTION 386

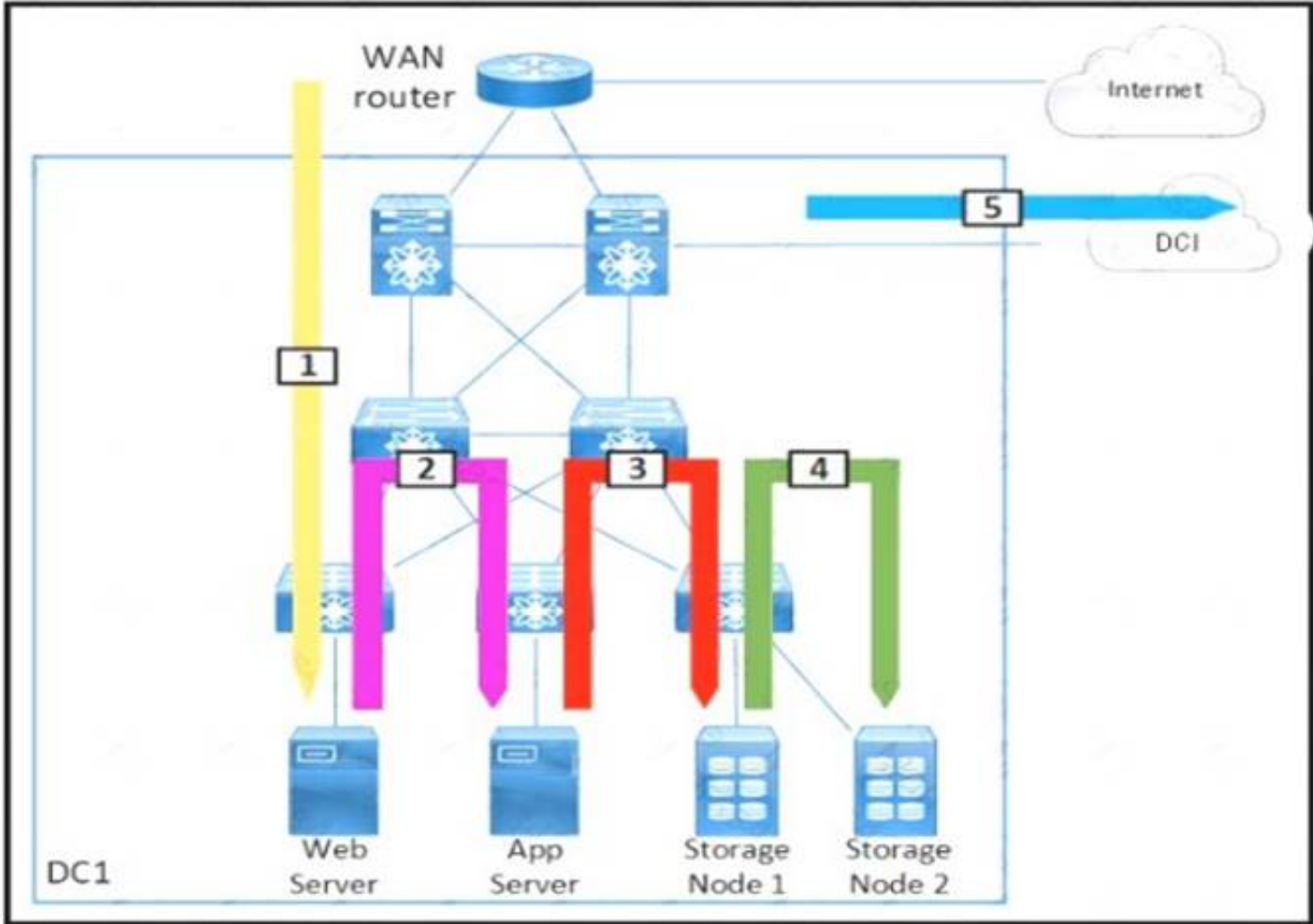
An engineer is deploying a VXLAN EVPN environment for a customer. The customers environment suffers from a large amount of flooding related to hosts attempting to resolve the MAC to IP mapping on the network segment. Which feature prevents this issue from happening in the future?

- A. anycast rendezvous point
- B. anycast gateway
- C. IP ARP SYNC
- D. IP ARP suppression

**Answer: D**

#### NEW QUESTION 389

Refer to the exhibit.



Drag and drop each traffic flow type from the left onto the corresponding number on the right Not all traffic flow types are used

Inter-Data Center	1
East-West	2
North-West	3
North-South	4
South-West	5
Storage Traffic	
Storage Replication	

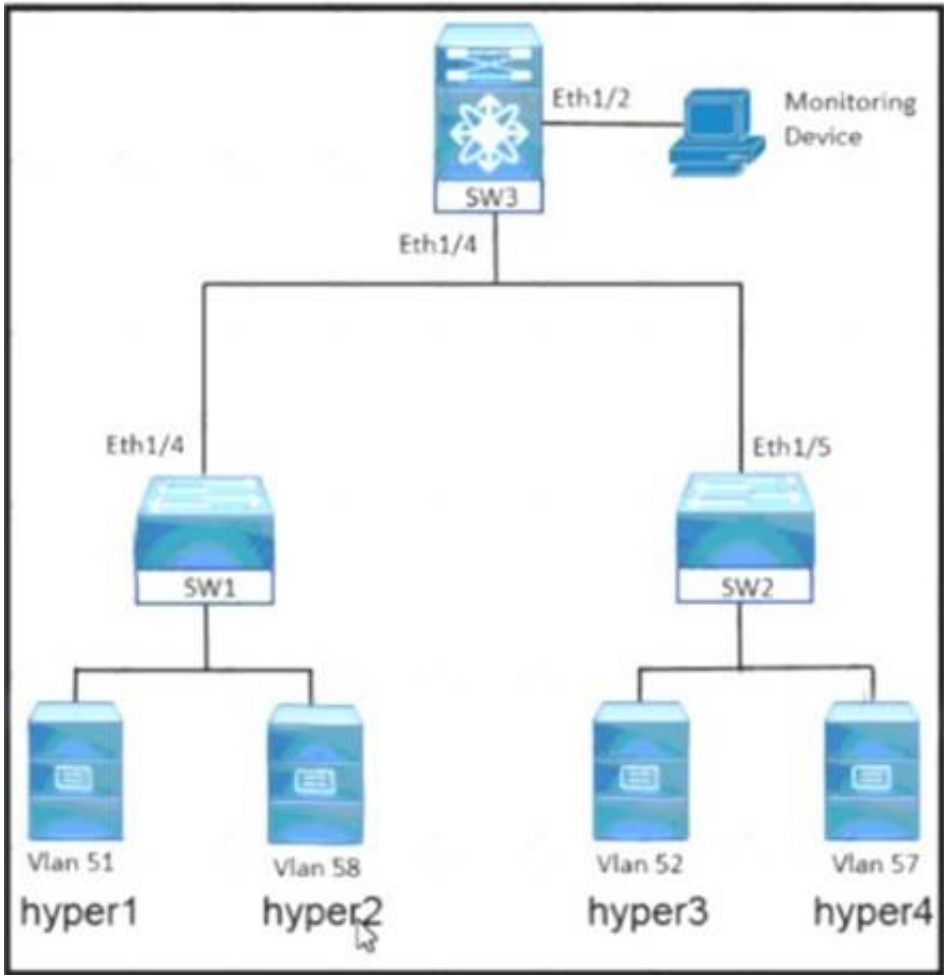
- A. Mastered
- B. Not Mastered

Answer: A

Explanation:  
Table Description automatically generated

NEW QUESTION 393  
Refer to the exhibit.





An engineer must monitor the Ethernet port and the corresponding VLAN traffic for the hyper4 device The SW3 device is a Cisco Nexus 7000 Series Switch Drag and drop the code snippets from the right into the boxes in the configuration to meet these requirements.

```
!SW3 configuration

interface ethernet 1/2
  switchport

monitor session 2
  source interface
  destination interface
  source
```

- vlan 57
- ethernet 1/2
- ethernet 1/4
- monitor
- interface vlan 57

- A. Mastered
- B. Not Mastered

Answer: A

Explanation:  
Graphical user interface Description automatically generated

NEW QUESTION 398  
Port security is enabled on a Cisco MDS 9000 series Switch. Which statement is true?

- A. Cisco Fabric Services must be disabled before enabling port security.
- B. Port security can be enabled only globally and affects all VSANs.
- C. Auto-learning is always enabled automatically when port security is enabled.
- D. Any devices currently logged in must be added manually to the device databased.

Answer: C

Explanation:  
[https://www.cisco.com/c/en/us/td/docs/switches/datacenter/mds9000/sw/8\\_x/config/security/cisco\\_mds9000\\_security\\_config\\_guide\\_8x/configuring\\_port\\_security.html](https://www.cisco.com/c/en/us/td/docs/switches/datacenter/mds9000/sw/8_x/config/security/cisco_mds9000_security_config_guide_8x/configuring_port_security.html)

- **Active database:** The database currently enforced by the device. The port security feature requires all devices connecting to a switch to be part of the port security active database. The software uses this active database to enforce authorization.

## About Auto-Learning

You can instruct the switch to automatically learn (auto-learn) the port security configurations over a specified period. This feature allows any switch in the Cisco MDS 9000 Family to automatically learn about devices and switches that connect to it. Use this feature when you activate the port security feature for the first time as it saves tedious manual configuration for each port. You must configure auto-learning on a per-VSAN basis. If enabled, devices and switches that are allowed to connect to the switch are automatically learned, even if you have not configured any port access.

**When auto-learning is enabled,** learning happens for the devices or interfaces that were already logged into the switch and the new devices or interfaces that need to be logged in. Learned entries on a port are cleaned up after you shut down that port if auto-learning is still enabled.

Learning does not override the existing configured port security policies. So, for example, if an interface is configured to allow a specific pWWN, then auto-learning will not add a new entry to allow any other pWWN on that interface. All other pWWNs will be blocked even in auto-learning mode.

No entries are learned for a port in the shutdown state.

When you activate the port security feature, auto-learning is also automatically enabled.



**Note** If you activate port security feature, auto-learning gets enabled by default. You cannot re-activate port security until auto-learning is disabled or deactivate and activate again.

## Port Security Activation

By default, the port security feature is not activated in any switch in the Cisco MDS 9000 Family.

By activating the port security feature, the following apply:

- Auto-learning is also automatically enabled, which means:
  - From this point, auto-learning happens for the devices or interfaces that were already logged into the switch and also for the new devices will login in future.
  - You cannot activate the database until you disable auto-learning.
- All the devices that are already logged in are learned and are added to the active database.
- All entries in the configured database are copied to the active database.

After the database is activated, subsequent device login is subject to the activated port bound WWN pairs, excluding the auto-learned entries. You must disable auto-learning before the auto-learned entries become activated.

**When you activate the port security feature, auto-learning is also automatically enabled.** You can choose to activate the port security feature and disable auto-learning.

### NEW QUESTION 399

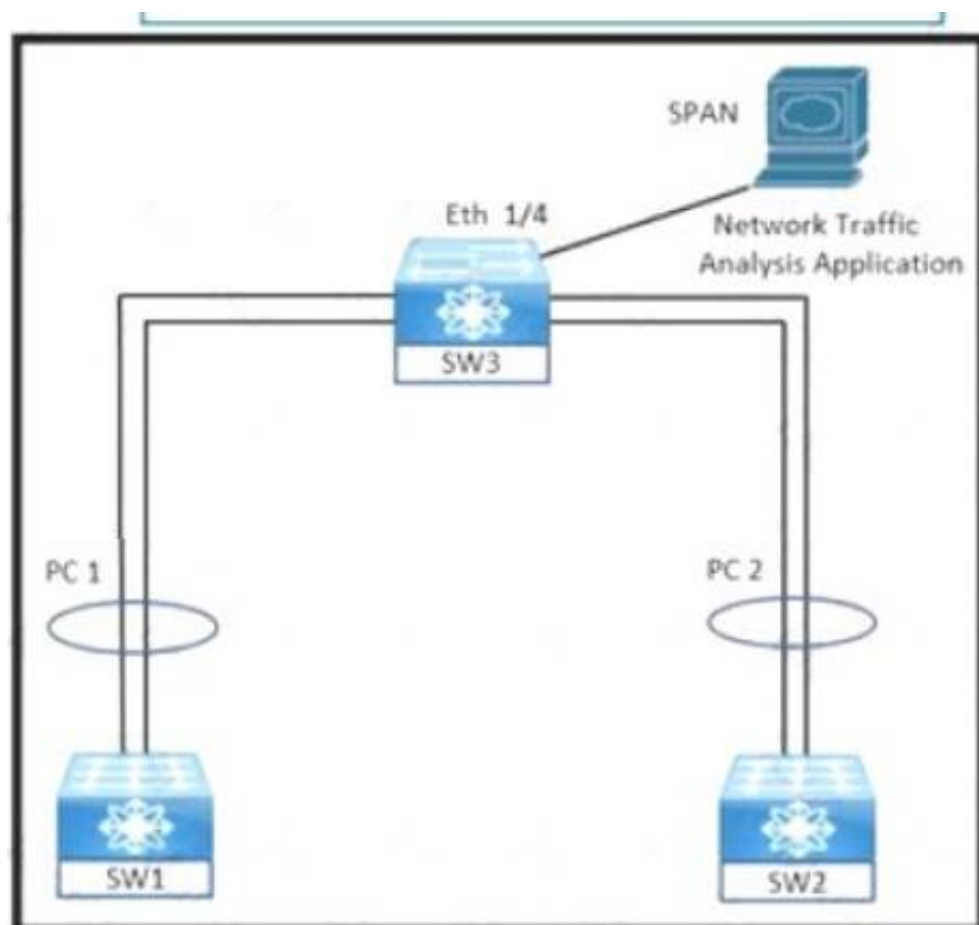
An infrastructure architect is analyzing the deployment type for an application. Several companies must be able to operate the application environment and integrate it with a third-party protocol. The development team also must have maximum control over their development environment, including the operating system used, Python interpreter, and corresponding libraries. Which cloud deployment solution meets these requirements?

- A. public cloud Storage as a Service
- B. private cloud Platform as a Service
- C. hybrid cloud Software as a Service
- D. community cloud Infrastructure as a Service

**Answer: D**

### NEW QUESTION 402

Refer to the exhibit.



An engineer must monitor ingress traffic from SW1 and SW2 port-channel interfaces from SW3. Which configuration must be implemented to accomplish this goal?

A)

```

SW3# configure terminal
SW3(config)# source interface port-channel 1 rx
SW3(config)# source interface port-channel 2 tx

SW3(config)# interface ethernet 1/4
SW3(config-if)# destination interface ethernet 1/4
SW3(config-if)# exit

SW3(config)# interface Port-channel 1-2
SW3(config-if)# switchport monitor
SW3(config-if)# exit

```

B)

```

SW3# configure terminal
SW3(config)# monitor session 2
SW3(config-monitor)# source interface port-channel 1 tx
SW3(config-monitor)# source interface port-channel 2 tx

SW3(config)# interface Port-channel 1
SW3(config-if)# switchport monitor
SW3(config-if)# exit

SW3(config)# interface Port-channel 2
SW3(config-if)# switchport monitor
SW3(config-if)# exit

```

C)

```

SW3# configure terminal
SW3(config)# monitor session 2
SW3(config-monitor)# source interface port-channel 1 tx
SW3(config-monitor)# source interface port-channel 2 rx

SW3(config)# interface port-channel 1
SW3(config-if)# switchport monitor
SW3(config-if)# exit

SW3(config)# interface port-channel 2
SW3(config-if)# switchport monitor
SW3(config-if)# exit

```

D)

```

SW3# configure terminal
SW3(config)# monitor session 2
SW3(config-monitor)# source interface port-channel 1 rx
SW3(config-monitor)# source interface port-channel 2 rx

SW3(config)# interface ethernet 1/4
SW3(config-if)# switchport monitor
SW3(config-if)# exit

SW3(config)# monitor session 2
SW3(config-monitor)# destination interface ethernet 1/4

```

- A. Option A
- B. Option B
- C. Option C
- D. Option D

**Answer: D**

#### NEW QUESTION 403

An engineer must configure a VDS port group using APIC policy. The requirements are for the frames to be mapped to a particular Layer 2 network and for the virtual machine assigned to the port group to receive all frames passed on the virtual switch. Which two settings must be used to meet these requirements? (Choose two.)

- A. forged transmits
- B. VMDirectPath
- C. port binding
- D. promiscuous mode
- E. VLAN

**Answer:** CD

**NEW QUESTION 405**

.....



## Thank You for Trying Our Product

\* 100% Pass or Money Back

All our products come with a 90-day Money Back Guarantee.

\* One year free update

You can enjoy free update one year. 24x7 online support.

\* Trusted by Millions

We currently serve more than 30,000,000 customers.

\* Shop Securely

All transactions are protected by VeriSign!

**100% Pass Your 350-601 Exam with Our Prep Materials Via below:**

<https://www.certleader.com/350-601-dumps.html>