



Cisco

Exam Questions 400-007

Cisco Certified Design Expert (CCDE v3.0) Written Exam

About ExamBible

[Your Partner of IT Exam](#)

Found in 1998

ExamBible is a company specialized on providing high quality IT exam practice study materials, especially Cisco CCNA, CCDA, CCNP, CCIE, Checkpoint CCSE, CompTIA A+, Network+ certification practice exams and so on. We guarantee that the candidates will not only pass any IT exam at the first attempt but also get profound understanding about the certificates they have got. There are so many alike companies in this industry, however, ExamBible has its unique advantages that other companies could not achieve.

Our Advances

* 99.9% Uptime

All examinations will be up to date.

* 24/7 Quality Support

We will provide service round the clock.

* 100% Pass Rate

Our guarantee that you will pass the exam.

* Unique Gurantee

If you do not pass the exam at the first time, we will not only arrange FULL REFUND for you, but also provide you another exam of your claim, ABSOLUTELY FREE!

NEW QUESTION 1

Which two mechanisms avoid suboptimal routing in a network with dynamic mutual redistribution between multiple OSPFv2 and EIGRP boundaries? (Choose two.)

- A. AD manipulation
- B. matching OSPF external routes
- C. route tagging
- D. route tagging
- E. route filtering
- F. matching EIGRP process ID

Answer: DE

Explanation:

<https://www.cisco.com/c/en/us/support/docs/ip/enhanced-interior-gateway-routing-protocol-eigrp/8606-redist.ht>

NEW QUESTION 2

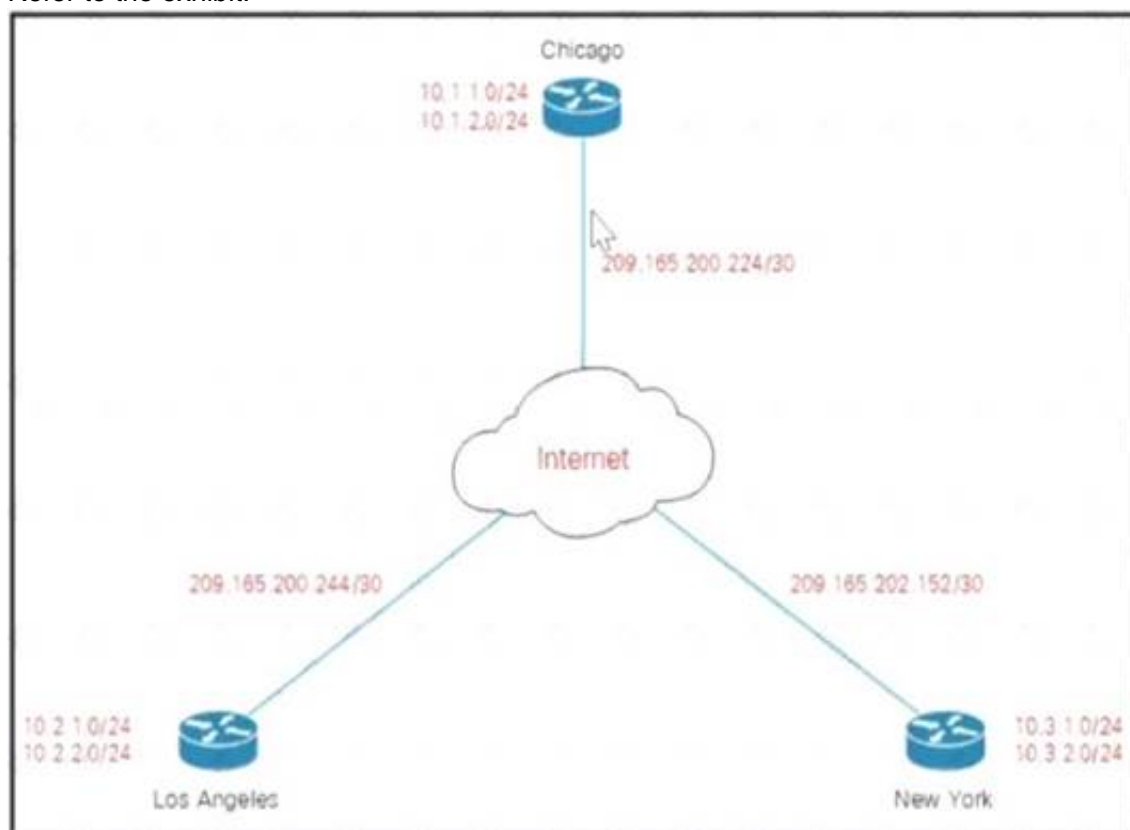
When consumers that leverage IaaS reach 100% resource capacity, what can be used to redirect the overflow of traffic to the public cloud so there is no disruption to service?

- A. cloud policing
- B. cloud spill
- C. cloud bursting
- D. cloud shaping

Answer: C

NEW QUESTION 3

Refer to the exhibit.



Company XYZ must design a DMVPN tunnel between the three sites. Chicago is going to act as the NHS and the company wants DMVPN to detect peer endpoint failures. Which technology should be used in the design?

- A. VPLS
- B. IP SLA
- C. GRE
- D. L2TPv3

Answer: B

NEW QUESTION 4

Enterprise XYZ wants to implement fast convergence on their network and optimize timers for OSPF. However, they also want to prevent excess flooding of LSAs if there is a constantly flapping link on the network. Which timers can help prevent excess flooding of LSAs for OSPF?

- A. OSPF propagation timers
- B. OSPF throttling timers
- C. OSPF delay timers
- D. OSPF flooding timers

Answer: B

NEW QUESTION 5

A healthcare customer requested that SNMP traps must be sent over the MPLS Layer 3 VPN service. Which protocol must be enabled?

- A. SNMPv3
- B. Syslog
- C. Syslog TLS
- D. SNMPv2
- E. SSH

Answer: A

NEW QUESTION 6

What statement describes the application layer as defined in the software-defined networking architecture?

- A. This layer is responsible for collecting the network status such as network usage and topology.
- B. This layer contains programs that communicate their desired network behavior to controllers.
- C. This layer is responsible for handling packets based on the rules provided by the controller.
- D. This layer processes the instructions and requirements sent by networking components.

Answer: B

NEW QUESTION 7

Which design consideration is valid when you contrast fabricPath and trill?

- A. FabricPath uses IS-IS, but TRILL uses VxLAN
- B. FabricPath permits active-active FHRP and TRILL support anycast gateway.
- C. FabricPath Permits ECMP, but TRILL does not
- D. FabricPath permits active-active mode, but TRILL supports only active-standby mode.

Answer: B

NEW QUESTION 8

You have been asked to design a remote access VPN solution to support up to 2000 devices. You must ensure that only corporate assets are allowed to connect to the VPN, and users must authenticate to gain access of their based on their user role. Users must use a password that they are already using to access existing applications . A user may not always use the same device to access the VPN. Which two options combined meet the requirements? (Choose two)

- A. Use local usernames and passwords on the VPN device
- B. Deploy a central authentication directory that users can be authenticated and authorized against
- C. Deploy certificates that are unique to each user
- D. Deploy an IPsec VPN solution
- E. Deploy certificates that are unique to each device
- F. Deploy a SSL VPN solution

Answer: BF

NEW QUESTION 9

Refer to the exhibit.



Company XYZ BGP topology is as shown in the diagram. The interface on the LA router connected toward the 10.1.5.0/24 network is faulty and is going up and down, which affects the entire routing domain. Which routing technique can be used in the routing policy design so that the rest of the network is not affected by the flapping issue?

- A. Use route dampening on LA router for the 10 1 5 0/24 network so that it does not get propagated when it flaps up and down
- B. Use route filtering on Chicago router to block the 10.1.5.0/24 network from coming in from the LA router
- C. Use route filtering on LA router to block the 10.15.0/24 network from getting propagated toward Chicago and New York
- D. Use route aggregation on LA router to summarize the 10.1.4.0V24, 10.1.5.0724, 10.1.6.0/24. and 10.1.7.0/24 networks toward Chicago

Answer: D

NEW QUESTION 10

A network architect must redesign a service provider edge, where multiservice and multitenant PEs are currently present. Which design feature should be minimized in the new design to achieve reliability?

- A. bridging
- B. fate sharing
- C. redundancy
- D. unicast overlay routing

Answer: B

NEW QUESTION 10

A Service Provider is designing a solution for a managed CE service to a number of local customers using a single CE platform and wants to have logical separation on the CE platform using Virtual Routing and Forwarding (VRF) based on IP address ranges or packet length. Which is the most scalable solution to provide this type of VRF Selection process on the CE edge device?

- A. Static Routes for Route Leaking
- B. Policy Based Routing
- C. OSPF per VRF Instance
- D. Multi-Protocol BGP

Answer: B

NEW QUESTION 12

Which two benefits can software-defined networks provide to businesses? (Choose two.)

- A. provides additional redundancy
- B. reduction of OpEx/CapEx
- C. reduced latency
- D. decentralized management
- E. enables innovation
- F. meets high traffic demands

Answer: BE

NEW QUESTION 14

Company ABC wants to minimize the risk of users plugging unauthorized switches and hubs into the network Which two features can be used on the LAN access ports to support this design requirement? (Choose two.)

- A. Loop Guard
- B. PortFast
- C. DTF
- D. Root Guard
- E. BPDU Guard

Answer: BE

NEW QUESTION 18

You are designing the routing design for two merging companies that have overlapping IP address space. Which of these must you consider when developing the routing and NAT design?

- A. Local to global NAT translation is done after routing
- B. Global to local NAT translation is done before routing.
- C. Local to global NAT translation is done before policy-based routing
- D. Global to local NAT translation is done after policy-based routing.

Answer: B

NEW QUESTION 23

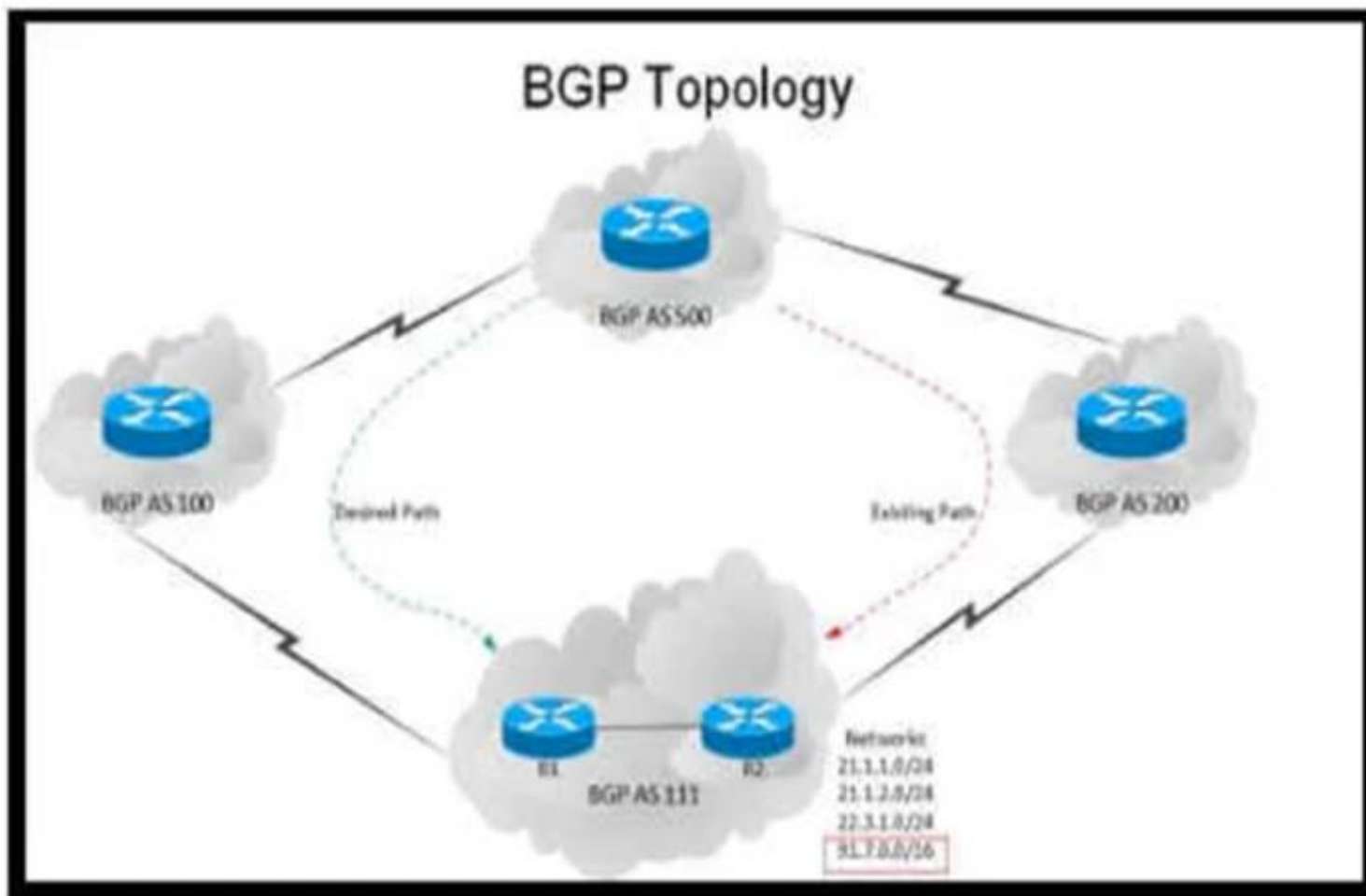
Which two control plane policer designs must be considered to achieve high availability? (Choose two.)

- A. Control plane policers are enforced in hardware to protect the software path, but they are hardware platform dependent in terms of classification ability.
- B. Control plane policers are really needed only on externally facing devices.
- C. Control plane policers can cause the network management systems to create false alarms.
- D. Control plane policers must be processed before a forwarding decision is made.
- E. Control plane policers require that adequate protocols overhead are factored in to allow protocol convergence.

Answer: AD

NEW QUESTION 27

Refer to the exhibit.



An engineer has been asked to redesign the traffic flow toward AS 111 coming from AS 500. Traffic destined to AS 111 network 91.7.0.0/16 should come in via AS 100, while traffic destined to all other networks in AS 111 should continue to use the existing path. Which BGP attributes are best suited to control this inbound traffic coming from BGP AS 500 into the 91.7.0.0/16 network?

- A. Prepend AS path for the 91.7.0.0/16 network and set it for neighbor in AS 200.
- B. Use extended community for the 91.7.0.0/16 network, not advertising it to the bi-lateral peer.
- C. Use local preference on R1 for the networks that AS 500 advertises to AS 111.
- D. Set higher MED for neighbor in AS 100 to influence incoming traffic for the 91.7.0.0/16 network.

Answer: A

NEW QUESTION 32

A customer asks you to perform a high level review of their upcoming WAN refresh for remote sites. The review is specially focused on their retail store operations consisting of 500+ locations connected via multipoint IPsec VPN solution. Which routing protocol would be valid but would also be the most restrictive for the expansion of this deployment model?

- A. EIGRP
- B. IS-IS
- C. OSPF
- D. BGP

Answer: B

NEW QUESTION 35

A financial company requires that a custom TCP-based stock-trading application be prioritized over all other traffic for the business due to the associated revenue. The company also requires that VoIP be prioritized for manual trades. Which directive should be followed when a QoS strategy is developed for the business?

- A. Allow VoIP and the custom application to share the same priority queue.
- B. The custom application and VoIP must be assigned their own separate priority queue.
- C. Interleave the custom application with other TCP applications in the same CBWFQ.
- D. Avoid placing the custom application in a CBWFQ queue that contains other

Answer: C

NEW QUESTION 40

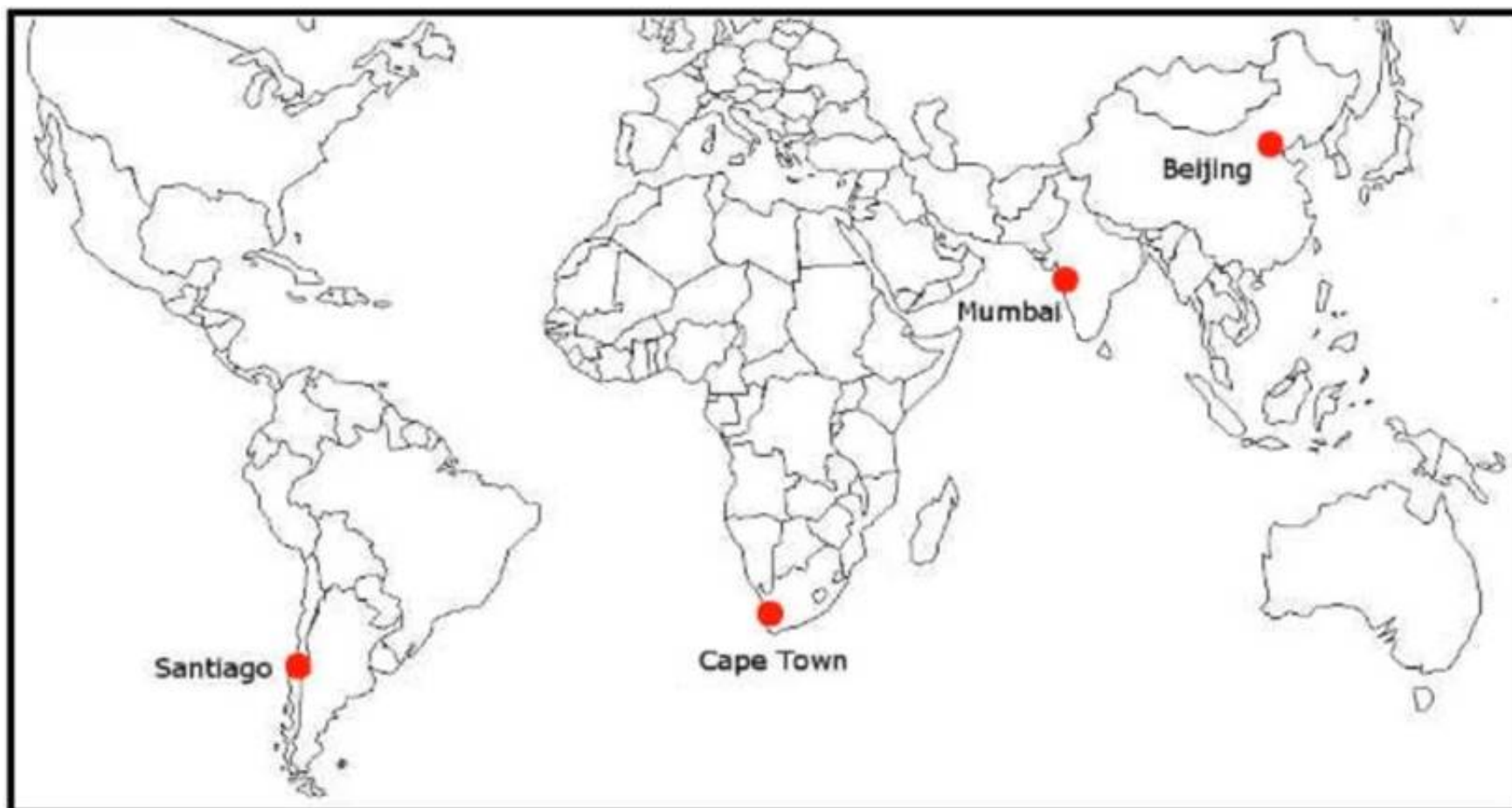
A business wants to centralize services via VDI technology and to replace remote WAN desktop PCs with thin client-type machines to reduce operating costs. Which consideration supports the new business requirement?

- A. VDI servers should be contained centrally within a DMZ.
- B. The thin client traffic should be placed in a WAN QoS priority queue.
- C. VDI servers should be contained within dedicated VLANs in each branch location.
- D. The WAN should offer low latency and be resized.

Answer: D

NEW QUESTION 42

Refer to the exhibit.



ACME Mining has four data centers in Santiago. Cape Town. Mumbai, and Beijing, full-mesh connected via a 400 Mb/s EVP-LAN They want to deploy a new mission-critical application with these requirements:

- > cluster heartbeat 2 Mb/s continuous (250 KB/s)
- > cluster heartbeat one-way maximum latency 100 ms

These are the current ping tests results between the four data centers:

	Santiago	Cape Town	Mumbai	Beijing
Santiago	-	280 ms	378 ms	409 ms
Cape Town	280 ms	-	185 ms	445 ms
Mumbai	383 ms	176 ms	-	443 ms
Beijing	430 ms	448 ms	442 ms	-

Which hosting data center pair can host the new application?

- A. Mumbai and Beijing
- B. Santiago and Cape Town
- C. Santiago and Mumbai
- D. Cape Town and Mumbai
- E. Cape Town and Beijing
- F. Santiago and Beijing

Answer: D

NEW QUESTION 44

Company XYZ wants to redesign the Layer 2 part of their network and wants to use all available uplinks for increased performance. They also want to have end host reachability supporting conversational learning. However, due to design constraints, they cannot implement port-channel on the uplinks. Which other technique can be used to make sure the uplinks are in active/active state?

- A. TRILL
- B. LISP
- C. MSTP
- D. switch stack

Answer: B

NEW QUESTION 47

Company XYZ wants to deploy OSPF. The design plan requires that two OSPF networks be mutually redistributed at multiple locations and ensure end-to-end connectivity to all of the company's networks Which technology can be used to fulfill the requirements while avoiding the creation of routing loops?

- A. Create a virtual link between ASBRs.
- B. Change the router ID for both ASBRs.
- C. Redistribute routes as external type 2 routes.
- D. Use route maps on ASBRs to filter routes with tags so they are not redistributed.

Answer: D

Explanation:

<https://www.cisco.com/c/en/us/support/docs/ip/open-shortest-path-first-ospf/4170-ospfprocesses.html>

NEW QUESTION 50

Which three items do you recommend for control plane hardening of an infrastructure device? (Choose three.)

- A. redundant AAA servers
- B. Control Plane Policing
- C. warning banners
- D. to enable unused .services
- E. SNMPv3
- F. routing protocol authentication

Answer: BEF

NEW QUESTION 53

Which two technologies enable multilayer segmentation? (Choose two.)

- A. policy-based routing
- B. segment routing
- C. data plane markings
- D. firewalls
- E. filter lists

Answer: AD

NEW QUESTION 55

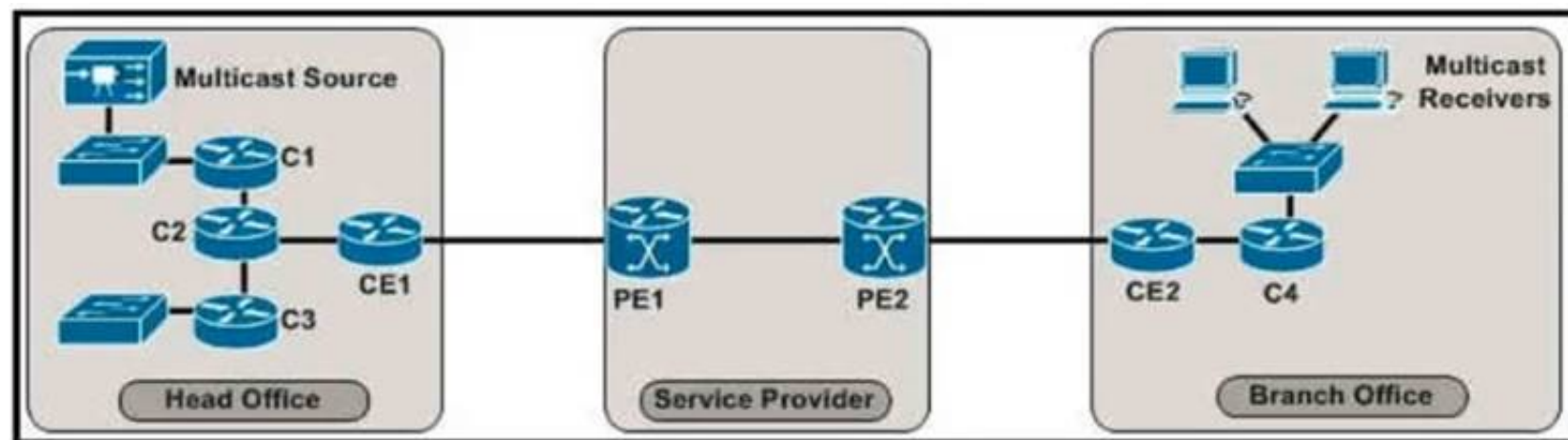
A network design includes a long signaling delay in notifying the Layer 3 control plane that an interface has failed Which two of these actions would reduce that delay? (Choose two.)

- A. Increase network stability.
- B. Reduce the time for the network to reconverge.
- C. Increase the notification of interface flaps.
- D. Enable lower data link layer recovery systems to have an opportunity to restore the interface

Answer: BD

NEW QUESTION 60

Refer to the exhibit.



The enterprise customer wants to stream one-way video from their head office to eight branch offices using multicast. Their current service provider provides a Layer3 VPN solution and manages the CE routers, but they do not currently support multicast. Which solution quickly allows this multicast traffic to go through while allowing for future scalability?

- A. Enable a GRE tunnel between nodes CE1 and CE2
- B. Enable a GRE tunnel between nodes C2 and C4
- C. Enable a GRE tunnel between nodes C1 and C4
- D. Implement hub and spoke MPLS VPN over DMVPN (also known as 2547o DMVPN) between CE1 and CE2
- E. The service provider must provide a Draft Rosen solution to enable a GRE tunnel between nodes PE1 and PE2

Answer: B

NEW QUESTION 64

Refer to the exhibit.

	Equipment Cost	ISP Cost	Licenses Cost
SD-WAN over L3VPN	\$\$	\$\$	\$\$\$
SD-WAN over L2VPN	\$\$	\$	\$\$\$
Managed SD-WAN	\$	\$\$\$	-
DMVPN over L3VPN	\$\$	\$\$	\$

The WAN network of the General Bank of Greece has experienced several outages It takes too long to activate a new branch site The networking department of the bank plans to upgrade the legacy end-of-life WAN network with a new flexible manageable, and scalable in-house solution The number of branches will increase exponentially in the next fiscal year The CTO states that the bank's mam goal is OPEX reduction The network engineering team prepares a table to evaluate the available options Which WAN technology can be used for the solution?

- A. DMVPN over L3VPN
- B. Managed SD-WAN

- C. SD-WAN over L3VPN
- D. SD-WAN over L2VPN

Answer: B

NEW QUESTION 67

An engineer must design a network for a company that uses OSPF LFA to reduce loops. Which type of loop would be reduced by using this design?

- A. DTP
- B. micro loops
- C. STP
- D. REP

Answer: B

NEW QUESTION 71

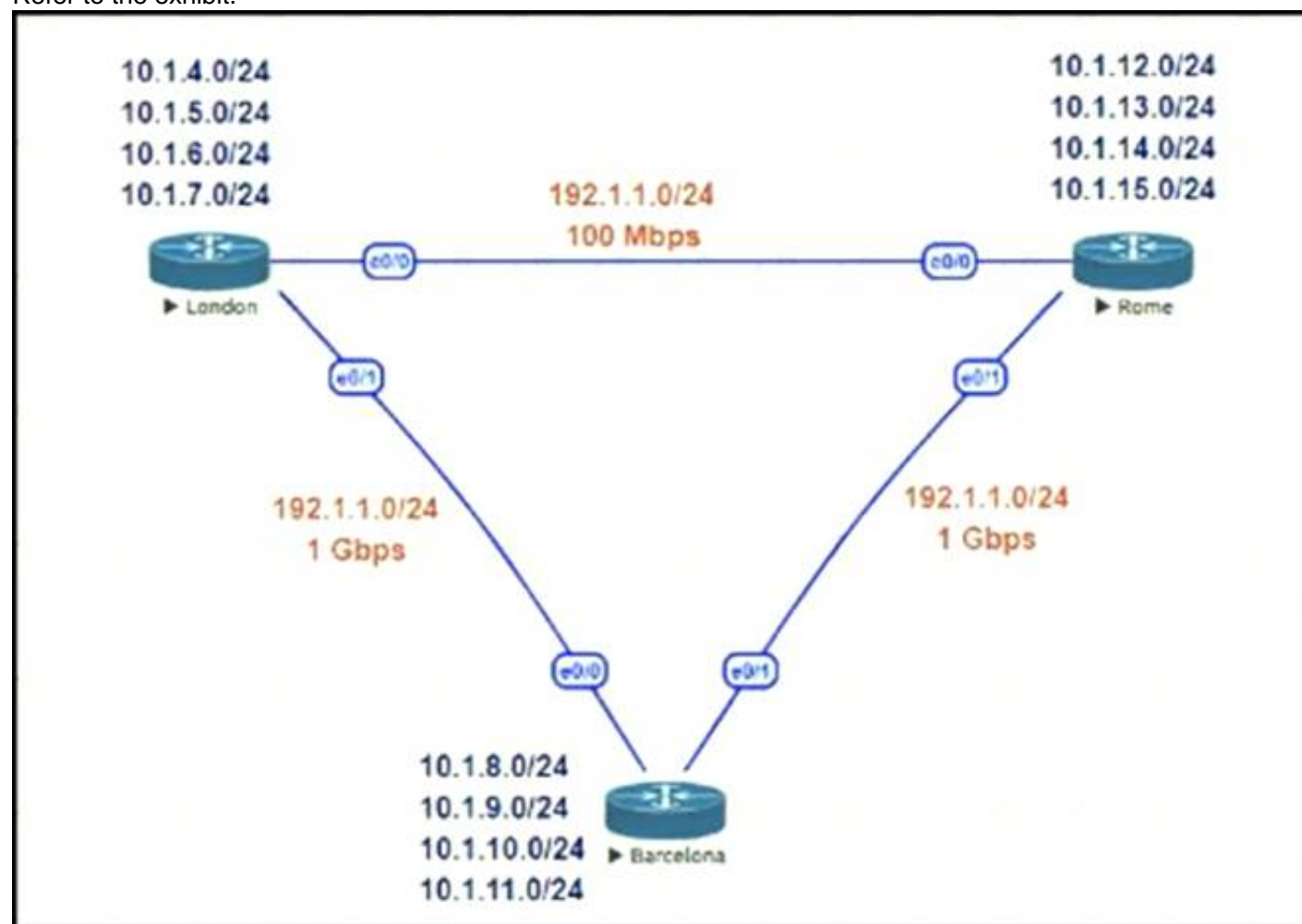
Which two data plane hardening techniques are true? (Choose two)

- A. warning banners
- B. redundant AAA servers
- C. Control Plane Policing
- D. SNMPv3
- E. infrastructure ACLs
- F. disable unused services
- G. routing protocol authentication

Answer: EF

NEW QUESTION 74

Refer to the exhibit.



This network is running EIGRP as the routing protocol and the internal networks are being advertised in EIGRP. Based on the link speeds, all traffic between London and Rome is getting propagated via Barcelona and the direct link between London and Rome is not being utilized under normal working circumstances. The EIGRP design should allow for efficiency in the routing table by minimizing the routes being exchanged. The link between London and Rome should be utilized for specific routes. Which two steps accomplish this task? (Choose two.)

- A. Configure EIGRP route summarization on all the interfaces to summarize the internal LAN routes
- B. Filter the routes on the link between London and Barcelona
- C. Filter the routes on the link between London and Rome
- D. Configure route leaking of summary routes on the link between London and Rome

Answer: AD

NEW QUESTION 76

A network architect in an enterprise is designing a network policy for certain database applications. The goal of the policy is to allow these applications to access the internet directly, whereas other user and network applications that communicate with systems or users outside their own network must be routed through the data center. The focus is on achieving higher availability and a better user experience for the database applications, but switching between different network paths based on performance characteristics must be supported. Which solution meets these requirements?

- A. MPLS L3VPN with QoS

- B. Cloud onRamp for IaaS
- C. Cloud onRamp for SaaS
- D. MPLS direct connect

Answer: C

Explanation:

<https://www.cisco.com/c/en/us/solutions/collateral/enterprise-networks/sd-wan/nb-06-cloud-onramp-saas-faq-ct>

NEW QUESTION 77

Refer to the table.

CONNECTIVITY	CAPEX	OPEX ANNUAL	INSTALLATION FEE	TERM
DWDM over dark fiber	\$250,000	\$100,000	\$30,000	12 months
CWDM over dark fiber	\$150,000	\$100,000	\$25,000	18 months
MPLS wires only	\$50,000	\$80,000	\$5,000	24 months
Metro Ethernet	\$45,000	\$100,000	\$5,000	36 months

A customer investigates connectivity options for a DCI between two production data centers to aid a large-scale migration project. The solution must provide a single 10G connection between locations and be able to run its own varying QoS profiles without service provider interaction based on the migration stages. All connectivity methods are at 10 Gbps. Which transport technology costs the least if the connectivity is required for just one year?

- A. MPLS wires only
- B. CWDM over dark fiber
- C. DWDM over dark fiber
- D. Metro Ethernet

Answer: A

NEW QUESTION 79

Company XYZ has a hub-and-spoke topology over an SP-managed infrastructure. To measure traffic performance metrics, they implemented IP SLA senders on all spoke CE routers and an IP SLA responder on the hub CE router. What must they monitor to have visibility on the potential performance impact due to the constantly increasing number of spoke sites?

- A. CPU and memory usage on the spoke routers
- B. memory usage on the hub router
- C. CPU usage on the hub router
- D. interface buffers on the hub and spoke routers

Answer: C

NEW QUESTION 82

Which actions are performed at the distribution layer of the three-layer hierarchical network design model? (Choose two)

- A. Fast transport
- B. Reliability
- C. QoS classification and marking boundary
- D. Fault isolation
- E. Redundancy and load balancing

Answer: DE

NEW QUESTION 83

An IT service provider is upgrading network infrastructure to comply with PCI security standards. The network team finds that 802.1X and VPN authentication based on locally-significant certificates are not available on some legacy phones. Which workaround solution meets the requirement?

- A. Replace legacy phones with new phones because the legacy phones will lose trust if the certificate is renewed.
- B. Enable phone VPN authentication based on end-user username and password.
- C. Temporarily allow fallback to TLS 1.0 when using certificates and then upgrade the software on legacy phones.
- D. Use authentication-based clear text password with no EAP-MD5 on the legacy phones.

Answer: B

NEW QUESTION 88

Which design benefit of bridge assurance is true?

- A. It suppresses a spanning-tree topology change upon connecting and disconnecting a station on a port
- B. It prevents switched traffic from traversing suboptimal paths on the network.
- C. It allows small, unmanaged switches to be plugged into ports of access switches without the risk of switch loops.
- D. It prevents switch loops caused by unidirectional point-to-point link condition on Rapid PVST+ and MST

Answer: D

NEW QUESTION 92

You are designing a network for a branch office. In order to improve convergence time, you are required to use the BFD feature Which four routing protocols can you use to facilitate this? (Choose four.)

- A. IS-IS
- B. static
- C. RIP
- D. EIGRP
- E. BGP

Answer: ABDE

NEW QUESTION 93

A multicast network is using Bidirectional PIM. Which two combined actions achieve high availability so that two RPs within the same network can act in a redundant manner? (Choose two)

- A. Use two phantom RP addresses
- B. Manipulate the administration distance of the unicast routes to the two RPs
- C. Manipulate the multicast routing table by creating static mroutes to the two RPs
- D. Advertise the two RP addresses in the routing protocol
- E. Use anycast RP based on MSDP peering between the two RPs
- F. Control routing to the two RPs through a longest match prefix

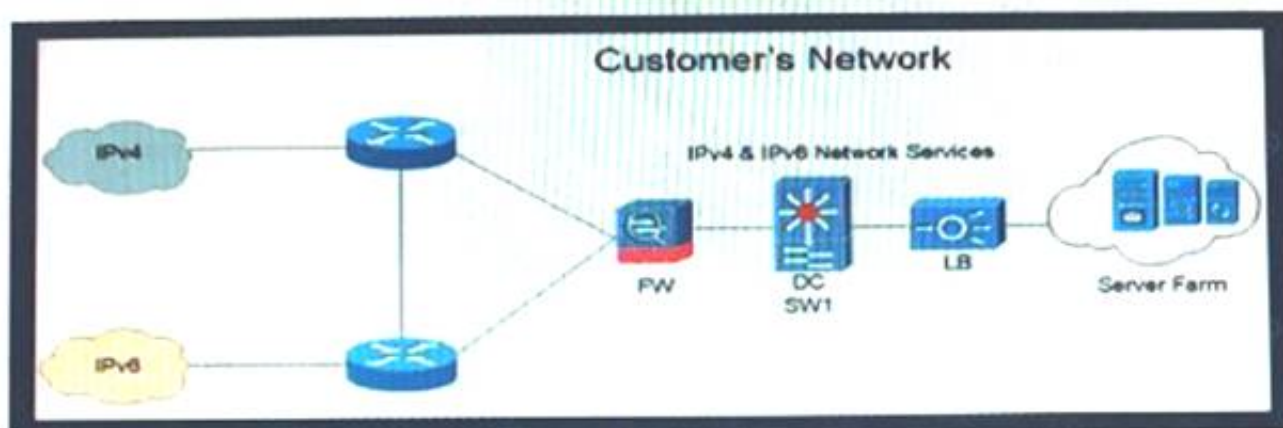
Answer: AF

Explanation:

<https://community.cisco.com/t5/networking-knowledge-base/rp-redundancy-with-pim-bidir-phantom-rp/ta-p/31>

NEW QUESTION 96

Refer to the exhibit.



Company XYZ is currently running IPv4 but has decided to start the transition into IPv6. The initial objective is to allow communication based on IPv6 wherever possible, and there should still be support in place for devices that only support IPv4. These devices must be able to communicate to IPv6 devices as well. Which solution must be part of the design?

- A. address family translation
- B. dual stack
- C. host-to-host tunneling
- D. 6rd tunneling

Answer: B

NEW QUESTION 101

A European national bank considers migrating its on-premises systems to a private cloud offering in a non-European location to significantly reduce IT costs. What is a primary factor prior to migration?

- A. data governance
- B. additional latency
- C. security
- D. cloud connectivity

Answer: C

NEW QUESTION 104

Which two statements explain the operation of BFD asynchronous mode? (Choose two)

- A. BFD asynchronous mode with echo packets combines the control packets and echo packets into a single packet.
- B. BFD asynchronous mode without echo packets uses control packets, and BFD asynchronous mode with echo packets does not.
- C. BFD asynchronous mode with and without echo packets use control packets.
- D. BFD asynchronous without echo packets has control packets sent back to the originating router, which echoes the control packet to detect failures.
- E. BFD asynchronous mode with echo packets uses separate control packets and echo packets.

Answer: CE

NEW QUESTION 109

You are designing a large-scale DMVPN network with more than 500 spokes using EIGRP as the IGP protocol. Which design option eliminates potential tunnel down events on the spoke routers due to the holding time expiration?

- A. Increase the hold queue on the physical interface of the hub router.
- B. Increase the hold queue on the tunnel interface of the spoke routers
- C. Increase the hold queue on the tunnel interface of the hub router
- D. Apply QoS for pak_priority class
- E. Increase the hold queue on the physical interface of the spoke routers.

Answer: C

NEW QUESTION 110

Your network operations team is deploying Access Control Lists (ACLs) across your Internet gateways. They wish to place an ACL inbound on the Internet gateway interface facing the core network (the "trusted" interface). Which IP address would the ACL need for traffic sourced from the inside interface, to match the source address of the traffic?

- A. inside global
- B. outside global
- C. inside local
- D. outside local

Answer: C

NEW QUESTION 112

While designing a switched topology, in which two options is UplinkFast recommended? (Choose two.)

- A. when switches of different spanning-tree types are connected (for example, 802.1d connecting to 802.1w)
- B. 802.1d connecting to 802.1w)
- C. on distribution layer switches
- D. when hello timers are changed to more aggressive values
- E. on access layer switches
- F. on the core switches

Answer: AD

NEW QUESTION 113

Company XYZ has designed their network to run GRE over IPsec on their Internet-based VPN to connect two sites. Which IPsec tunneling feature can they enable to optimize the data flow while ensuring that the headers contain no duplicate IP addresses?

- A. Transport Mode in IPsec Phase I
- B. Transport Mode in IPsec Phase II
- C. Tunnel Mode in IPsec Phase II
- D. Tunnel Mode in IPsec Phase I

Answer: B

NEW QUESTION 114

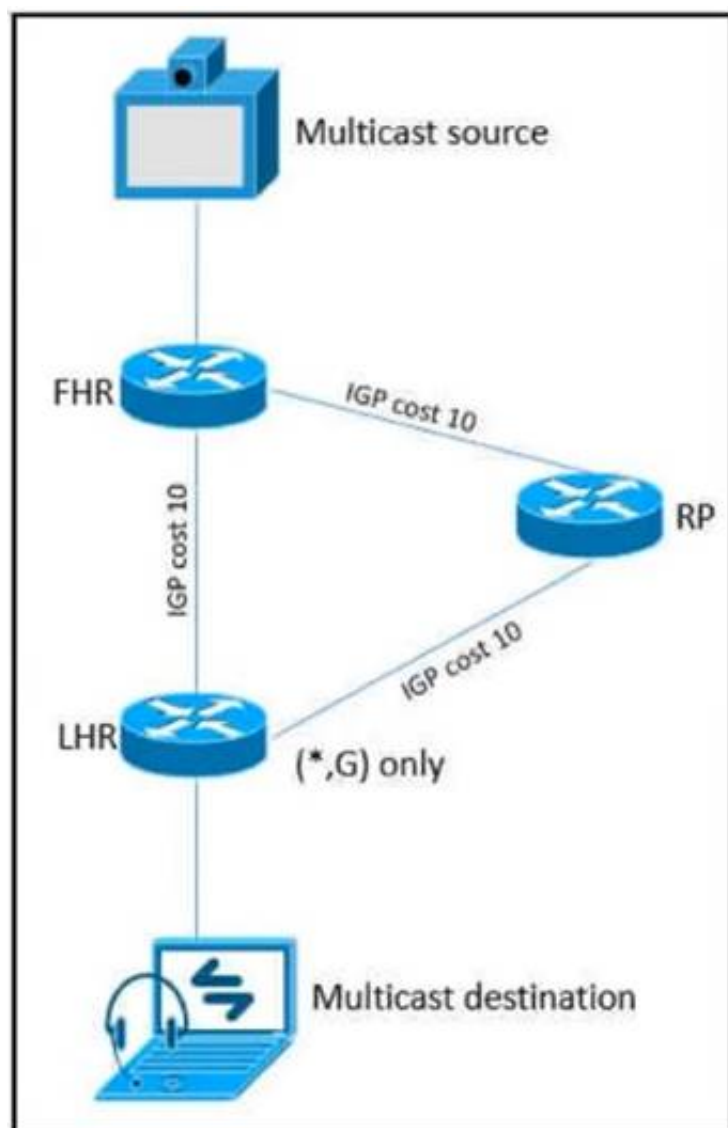
You have been tasked with designing a data center interconnect as part of business continuity. You want to use FCoE over this DCI to support synchronous replication. Which two technologies allow for FCoE via lossless Ethernet or data center bridging? (Choose two.)

- A. DWDM
- B. EoMPLS
- C. SONET/SDH
- D. Multichassis EtherChannel over Pseudowire
- E. VPLS

Answer: AC

NEW QUESTION 119

Refer to the exhibit.



As part of a redesign project, you must predict multicast behavior. What happens to the multicast traffic received on the shared tree (*,G), if it is received on the LHR interface indicated*?

- A. It is dropped due to an unsuccessful RPF check against the multicast source
- B. It is switched given that no RPF check is performed
- C. It is switched due to a successful RPF check against the routing table
- D. It is dropped due to an unsuccessful RPF check against the multicast receiver.

Answer: A

Explanation:

<https://www.cisco.com/c/en/us/support/docs/ip/ip-multicast/16450-mcastguide0.html>

When a multicast packet arrives on an interface, the RPF process checks to ensure that this incoming interface is the outgoing interface used by unicast routing in order to reach the source of the multicast packet. This RPF check process prevents loops. Multicast routing does not forward a packet unless the source of the packet passes a RPF check. Once a packet passes this RPF check, multicast routing forwards the packet based only upon the destination address.

NEW QUESTION 122

What are two examples of components that are part of an SDN architecture? (Choose two.)

- A. software plane
- B. control plane
- C. application plane
- D. management plane
- E. network plane

Answer: BD

NEW QUESTION 125

Which two characteristics apply to firewall transparent mode operations in a firewall solution design? (Choose two.)

- A. Changes in the existing IP addressing and subnets are required
- B. The firewall can participate actively on spanning tree.
- C. Multicast traffic can traverse the firewall.
- D. OSPF adjacencies can be established through the firewall
- E. The firewall acts like a router hop in the network.

Answer: CD

NEW QUESTION 130

What are two advantages of controller-based networks versus traditional networks? (Choose two.)

- A. the ability to have forwarding tables at each device
- B. more flexible configuration per device
- C. more consistent device configuration
- D. programmatic APIs that are available per device
- E. the ability to configure the features for the network rather than per device

Answer: CE

NEW QUESTION 133

The Agile Manifesto is a document that defines the key values and principles behind the Agile philosophy and helps development teams work more efficiently and sustainably Each of the four key values is split into two sections a left-hand side and a right-hand side In other words, though there is value in the items on the right we value the items on the left more What is one of the key values of the Agile Manifesto?

- A. comprehensive documentation over working software
- B. contract negotiation over customer collaboration
- C. individuals and interactions over processes and tools
- D. following a plan over responding to change

Answer: C

NEW QUESTION 135

Drag and drop the design use cases from the left onto the correct uRPF techniques used to prevent spoofing attacks Not all options are used.

to check whether a route to a given IP address exists without regard to its incoming interface	strict mode
to filter Bogon IP addresses	feasible mode
to ensure the incoming interface is the best reverse path to a given IP address	loose mode
when there are alternate routes to a given IP address	

- A. Mastered
- B. Not Mastered

Answer: A

Explanation:

to check whether a route to a given IP address exists without regard to its incoming interface	to ensure the incoming interface is the best reverse path to a given IP address
to filter Bogon IP addresses	when there are alternate routes to a given IP address
to ensure the incoming interface is the best reverse path to a given IP address	to filter Bogon IP addresses
when there are alternate routes to a given IP address	

NEW QUESTION 137

What is a characteristic of a secure cloud architecture model?

- A. limited access to job function
- B. dedicated and restricted workstations
- C. multi-factor authentication
- D. software-defined network segmentation

Answer: C

NEW QUESTION 142

The SD-WAN architecture is composed of separate orchestration management, control, and data planes Which activity happens at the orchestration plane?

- A. automatic onboarding of the SD-WAN routers into the SD-WAN overlay
- B. decision-making process on where traffic flows
- C. packet forwarding
- D. central configuration and monitoring

Answer: D

NEW QUESTION 145

Which methodology is the leading lifecycle approach to network design and implementation?

- A. PPDIOO
- B. Waterfall model
- C. Spiral model
- D. V model

Answer: A

NEW QUESTION 149

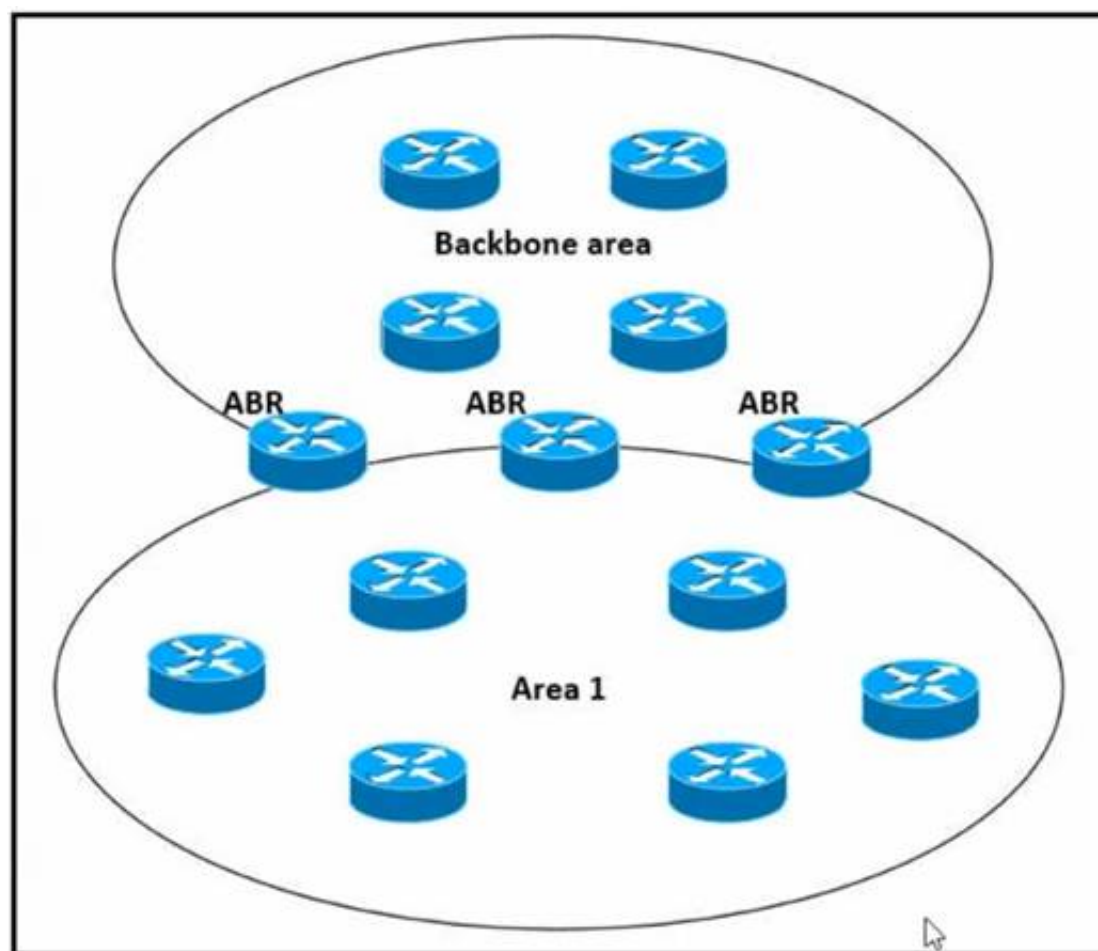
The major business applications of an enterprise are largely monolithic and hard-coded. As part of a major modernization and overhaul of the applications, the goal is to move to a modular and containerized application architecture mode. At the same time, decoupling from the hardware is desired to move to an on-demand provisioning. However, the CyberOps team mandated that the final architecture must provide the same security levels as an air-gapped data center. Which cloud architecture meets these requirements?

- A. IaaS
- B. private cloud
- C. PaaS
- D. hybrid cloud
- E. public cloud

Answer: B

NEW QUESTION 154

Refer to the exhibit.



Which impact of using three or more ABRs between the backbone area and area 1 is true?

- A. In a large-scale network, LSA replication by all ABRs can cause serious scalability issues.
- B. Multiple ABRs reduce the CPU processing on each ABR due to splitting prefix advertisement.
- C. In a large-scale network, multiple ABRs can create microloops.
- D. Prefixes from the non-backbone area are advertised by one ABR to the backbone.

Answer: A

NEW QUESTION 159

A business requirement stating that failure of WAN access for dual circuits into an MPLS provider for a Data Centre cannot happen due to related service credits that would need to be paid has led to diversely routed circuits to different points of presence on the providers network. What should a network designer also consider as part of the requirement?

- A. Provision of an additional MPLS provider
- B. Out of band access to the MPLS routers
- C. Ensuring all related remote branches are dual homed to the MPLS network
- D. Dual PSUs & Supervisors on each MPLS router

Answer: A

NEW QUESTION 161

A consultant needs to evaluate project management methodologies for a new service deployment on the existing network of a customer. The customer wants to be involved in the end-to-end project progress and be provided with frequent updates. The customer also wants the ability to change the requirements if needed, as the project progresses. Which project management methodology should be used?

- A. three principles
- B. phased
- C. Agile
- D. Waterfall

Answer: C

NEW QUESTION 165

Company XYZ has two routing domains in their network, EIGRP and OSPF. The company wants to provide full reachability between the two domains by implementing redistribution on a router running both protocols. They need to design the redistribution in a way that the OSPF routers will see link costs added to external routes. How must the redistribution strategy be designed for this network?

- A. Redistribute using metric type 2 into OSPF.
- B. Redistribute using metric type 1 into OSPF.
- C. Redistribute using metric type 1 into EIGRP.
- D. Redistribute using metric type 2 into EIGRP.

Answer: B

Explanation:

[https://www.ciscopress.com/articles/article.asp?p=27573&seqNum=4#:~:text=Routes%20are%20redistributed%](https://www.ciscopress.com/articles/article.asp?p=27573&seqNum=4#:~:text=Routes%20are%20redistributed%20to%20OSPF%20routers,which%20will%20be%20able%20to%20reach%20the%20external%20networks.)

NEW QUESTION 170

Which function is performed at the access layer of the three-layer hierarchical network design model?

- A. fault isolation
- B. QoS classification and marking boundary
- C. reliability
- D. fast transport
- E. redundancy and load balancing

Answer: B

NEW QUESTION 173

In the case of outsourced IT services, the RTO is defined within the SLA. Which two support terms are often included in the SLA by IT and other service providers? (Choose two.)

- A. network size and cost
- B. support availability
- C. network sustainability
- D. network reliability
- E. resolution time

Answer: BE

NEW QUESTION 177

Which mechanism provides Layer 2 fault isolation between data centers?

- A. fabric path
- B. OTL
- C. advanced VPLS
- D. LISP
- E. TRILL

Answer: D

NEW QUESTION 182

An engineer is designing the QoS strategy for Company XYZ. Based on initial analysis, a lot of scavenger type of traffic is traversing the network's 20Mb Internet link toward the service provider. The new design must use a QoS technique that limits scavenger traffic to 2 Mbps, which helps avoid oversubscription of the link during times of congestion. Which QoS technique can be used to facilitate this requirement?

- A. class-based traffic policing
- B. LLQ
- C. CBWFQ
- D. class-based traffic shaping

Answer: D

NEW QUESTION 185

What are two common approaches to analyzing and designing networks? (Choose two.)

- A. bottom-up approach
- B. high-low security approach
- C. top-down approach
- D. left-right approach
- E. three-tier approach

Answer: AC

NEW QUESTION 186

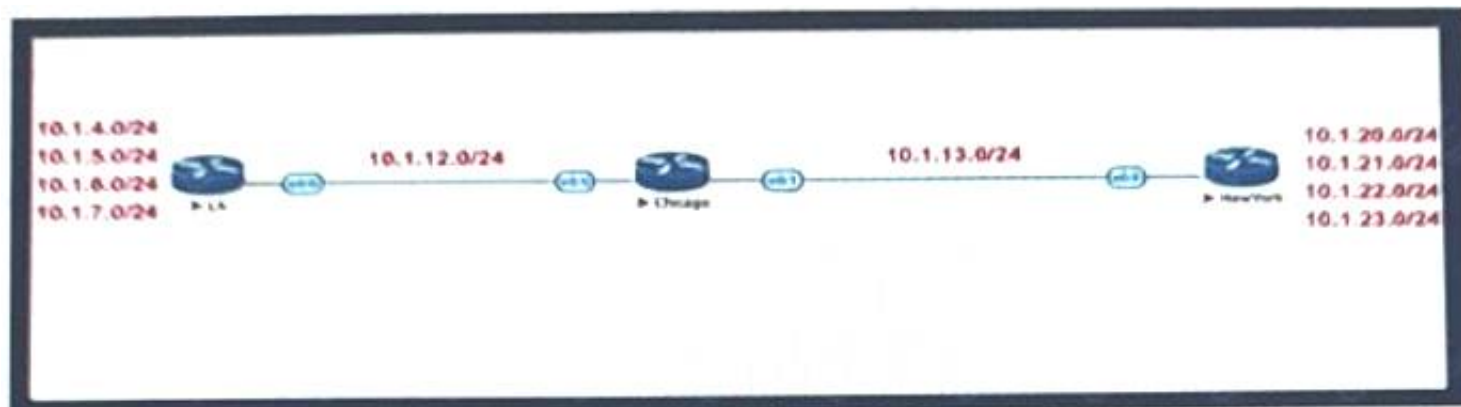
A BGP route reflector in the network is taking longer than expected to coverage during large network changes. Troubleshooting shows that the router cannot handle all the TCP acknowledgements during route updates. Which action can be performed to tune the device performance?

- A. Increase the size of the hold queue.
- B. Increase the size of the large buffers.
- C. Decrease the size of the small buffers.
- D. Increase the keepalive timers for each BGP neighbor.

Answer: A

NEW QUESTION 187

Refer to the exhibit.



Company XYZ BGP topology is as shown in the diagram. The interface on the LA router connected toward the 10.1.5.0/24 network is faulty and is going up and down, which affects the entire routing domain. Which routing technique can the network administrator use so that the rest of the network is not affected by the flapping issue?

- A. The LA administrator should use route aggregation to summarize the 10.1.4.0/24, 10.1.5.0/24, 10.1.6.0/24, and 10.1.7.0/24 networks toward Chicago
- B. The LA administrator should use route dampening for the 10.1.5.0/24 network so that it does not get propagated when it flaps up and down.
- C. The LA administrator should use route filtering to block the 10.1.5.0/24 network from getting propagated toward Chicago and New York.
- D. The Chicago administrator should use route filtering to block the 10.1.5.0/24 network from coming in from the LA router.

Answer: B

NEW QUESTION 192

Company XYZ asks for design recommendations for Layer 2 redundancy. The company wants to prioritize fast convergence and resiliency elements. In the design. Which two technologies are recommended? (Choose two.)

- A. Design MLAG/MC-LAG into the network wherever possible.
- B. Configure DHCP snooping on the switches.
- C. Use root guard.
- D. Use BPDU guard.
- E. Use UniDirectional Link Detection.

Answer: AE

NEW QUESTION 197

An architect designs a multi-controller network architecture with these requirements:

- Achieve fast failover to control traffic when controllers fail.
- Reduce connectivity loss and enable smart recovery to improve the SDN survivability.
- Improve connectivity by adding path diversity and capacity awareness for controllers.

Which control plane component of the multi-controller must be built to meet the requirements?

- A. control node reliability
- B. controller state consistency
- C. control path reliability
- D. controller clustering

Answer: B

NEW QUESTION 200

Company XYZ is designing their network using the three-layer hierarchical model. At which layer must the QoS design classify or mark the traffic?

- A. access
- B. core
- C. collapsed core
- D. distribution

Answer: A

NEW QUESTION 203

Which action must be taken before new VoIP systems are implemented on a network to ensure that the network is ready to handle the traffic?

- A. Evaluate bandwidth utilization and connection quality
- B. Enable special requirements such as direct DID lines on pickup
- C. Make recommendations to limit the size of the half-open session table on routers
- D. Check if anomaly detection is enabled for SIP and H.323 on Layer 3 devices

Answer: B

NEW QUESTION 208

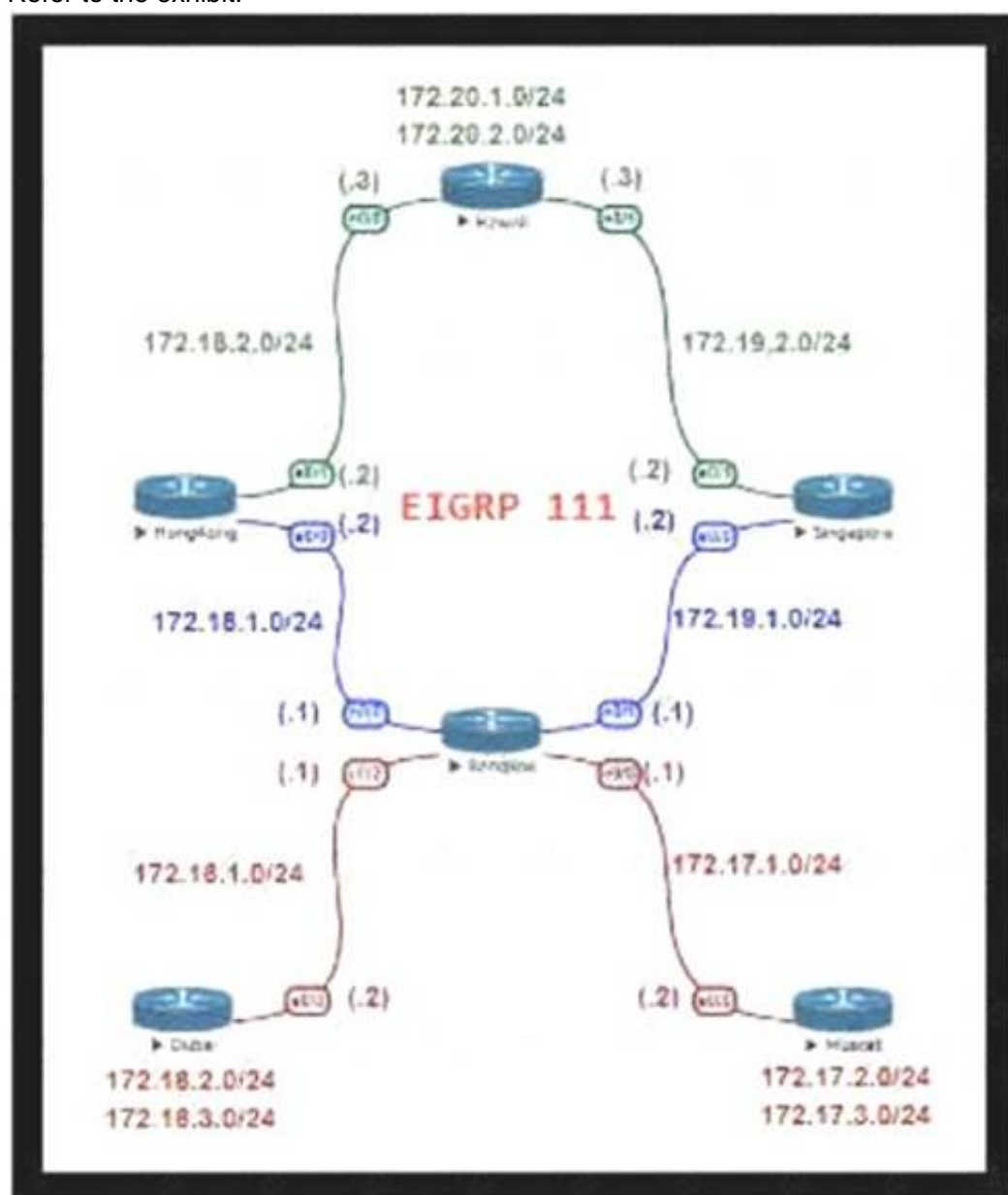
Which three components are part of the foundational information security principles of the CIA triad? (Choose three.)

- A. cryptography
- B. confidentiality
- C. authorization
- D. identification
- E. integrity
- F. availability

Answer: BEF

NEW QUESTION 212

Refer to the exhibit.



For Company XYZ Bangkok is using ECMP to reach the 172.20.2.0/24 network. The company wants a design that would allow them to forward traffic from 172.16.2.0/24 toward 172.20.2.0/24 via the Singapore router as the preferred route. The rest of the traffic should continue to use ECMP. Which technology fulfills this design requirement?

- A. policy-based routing
- B. route summarization
- C. unequal-cost load balancing using variance
- D. LFA

Answer: A

NEW QUESTION 215

Two routers R1 and R2 are directly connected through an Ethernet link. Both routers are running OSPF over the Ethernet link and OSPF has been registered with BFD. R1 has been set up to transmit BFD at a 50 ms interval, but R2 can receive only at a 100 ms rate due to platform limitations. What does this mean?

- A. After the initial timer exchange
- B. R2 sets its transmission rate to the R1 Desired Min TX interval
- C. After the initial timer exchange
- D. R1 sets its transmission rate to the R2 Required Min RX interval
- E. Timers renegotiate indefinitely, so the timer exchange phase never converges
- F. R2 sets the P-bit on all BFD control packets until R2 sends a packet with the F-bit set

Answer: B

NEW QUESTION 220

Company XYZ is running BGP as their routing protocol. An external design consultant recommends that TCP path MTU discovery be enabled. Which effect will this have on the network?

- A. It will enhance the performance of TCP-based applications.
- B. It will increase the convergence time.
- C. It will improve the convergence time.
- D. It will create a loop free path.

Answer: A

NEW QUESTION 225

An existing wireless network was designed to support data traffic only. You must now install context Aware services for location tracking changes must be applied to the existing wireless network to increase the location accuracy? (Chose two)

- A. Add access points along the perimeter of the coverage area.
- B. Increase the access point density to create an average inter-access point distance of less than 40 feet or 12.2 meters
- C. Use directional antennas to provide more cell overlapping
- D. Install additional access points in monitor mode where the co-channel interference would otherwise be affected
- E. Fine tune the radio configuration of the access point to have a higher average transmission power to achieve better coverage

Answer: BE

NEW QUESTION 230

How many fully established neighbour relationships exist on an Ethernet with five routers running OSPF as network type broadcast?

- A. 5
- B. 6
- C. 7
- D. 10
- E. 20

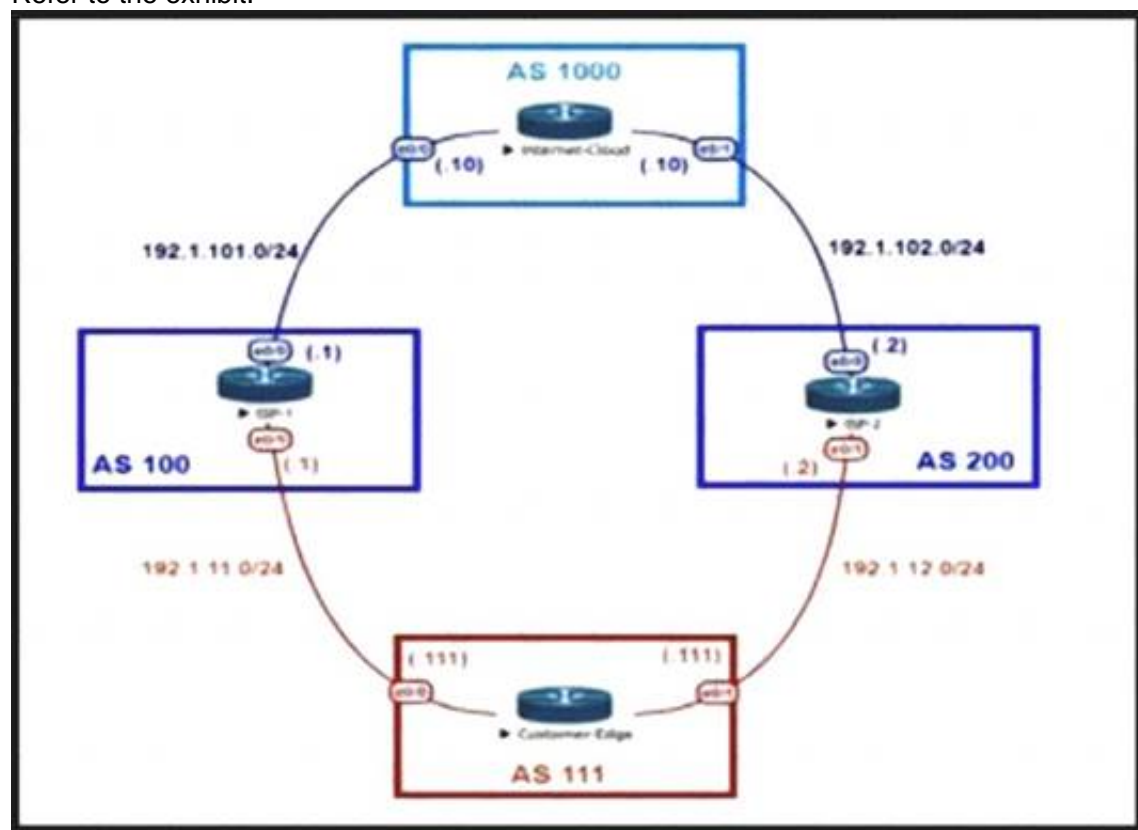
Answer: C

Explanation:

Assuming routers R1-R5, R1 is elected DR, R2 BDR. Fully established neighborships only occur to DR and BDR, all other neighbors are in 2Way DR other state.
 DR|BDRFull relationships:
 R2-R1 R3-R1 R3-R2 R4-R1 R4-R2 R5-R1 R5-R2

NEW QUESTION 234

Refer to the exhibit.



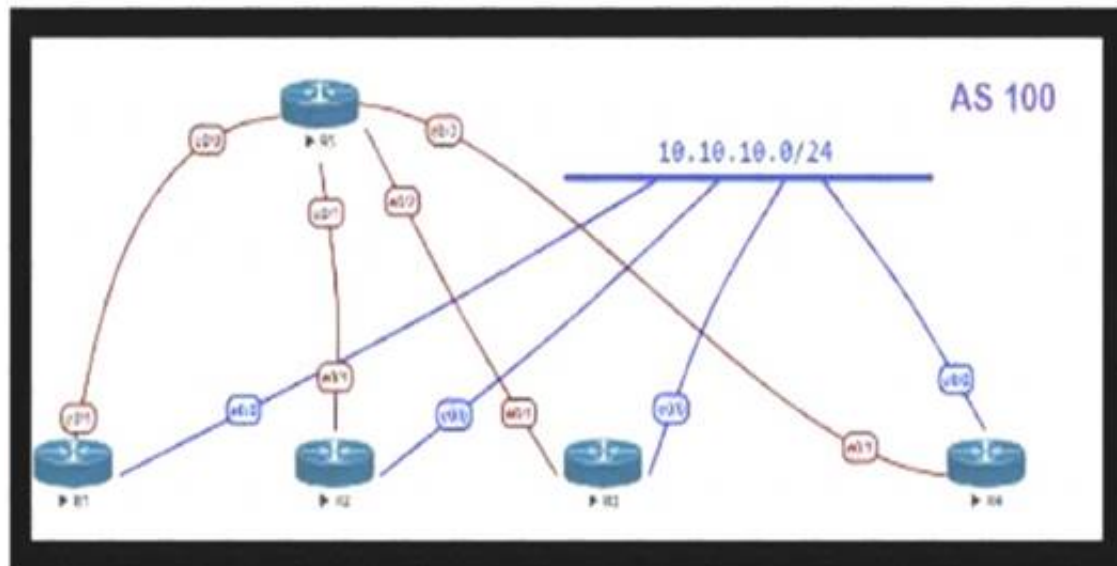
An engineer is designing the traffic flow for AS 111. Traffic from AS 111 should be preferred via AS 100 for all external routes. A method must be used that only affects AS 111. Which BGP attributes are best suited to control outbound traffic?

- A. community
- B. MED
- C. local preference
- D. As path

Answer: C

NEW QUESTION 239

Refer to the exhibit.



OSPF is running as the IGP to provide reachability to all AS100 networks R3 and R4 are the current ABRs at the boundary of OSPF Area0 and Areal Now BGP must be deployed within AS 100 because it will be receiving Internet routes from its eBGP peers (the service provider) connected to R1 and R2 What is an optimal solution for this deployment to configure BGP relationships and redistribute BGP learned routes into OSPF?

- A. R5 should be configured as a route reflector for R1, R2, R3 and R4. BGP routes must be redistributed at R1 and R2 into OSPF.
- B. Configuration should be set up with R1 and R2, and R3 in one sub AS, with and R4 in another, and redistribution at R1 and R2.
- C. A full mesh should be deployed between all the routers with mutual redistribution to take place at R1 and R2.
- D. R1, R2, R3 and R4 must be set up with a neighbor relationship with R5 only must not be a route reflector.

Answer: C

NEW QUESTION 242

What best describes the difference between Automation and Orchestration?

- A. Automation refers to an automatic process for completing a single task and Orchestration refers to assembling and coordinating a set of tasks and conditions.
- B. Automation describes a hands-off configuration process while Orchestration refers to sets of automation tasks that require the network administrator to coordinate
- C. Automation refers to an automatic process for completing multiple tasks with conditions and Orchestration refers to executing tasks in parallel.
- D. Automation refers to scripting languages (Pytho
- E. Ansible etc.) and Orchestration refers to commercial products that control configuration deployment

Answer: A

NEW QUESTION 247

The controller has a global view of the network, and it can easily ensure that the network is in a consistent and optimal configuration. Which two statements describe a centralized SDN control path? (Choose two.)

- A. Scaling of the centralized controller cluster is challenging for services like DHCP and load-balancing.
- B. It is highly-available by design with no single-point-of-failure risks present.
- C. Integrating smart NIC capabilities on the local host level is made easier through rest APIs.
- D. It significantly improves the latency when performing reactive handling of PACKET_IN events.
- E. It centralized controller can support all southbound APIs, which allows for easy integration with legacy equipment.

Answer: AE

NEW QUESTION 251

The Company XYZ network requires OSPF dead neighbor detection in a subsecond manner However the company network does not support BFD Which other feature can be used to fulfill the design requirement?

- A. STP
- B. fast hello
- C. LFA
- D. DPD

Answer: B

NEW QUESTION 253

Various teams in different organizations within an enterprise are preparing low-level design documents to capture network parameters using a Waterfall project model:

- hardware sizing and power consumption
- Layer 2 and layer 3 services parameters
- configuration of all control plane protocols

Input from relevant stakeholders was captured at the start of the project, and the project scope has been defined based on the parameters above. What impact will it have on documentation and project deliverables if the stakeholders ask to have changes carried out in the network before the information has been captured?

- A. This provides more opportunity to think outside the box.
- B. Rework is expected before the delivery.
- C. Significant effort and time are required.
- D. This provides a flexible approach to incorporate changes.

Answer: B

NEW QUESTION 258

Company XYZ has 30 sites running a legacy private WAN architecture that connects to the Internet via multiple high-speed connections. The company is now redesigning their network and must comply with these design requirements:

- Use a private WAN strategy that allows the sites to connect to each other directly and caters for future expansion.
- Use the Internet as the underlay for the private WAN.
- Securely transfer the corporate data over the private WAN.

Which two technologies should be incorporated into the design of this network? (Choose two.)

- A. S-VTI
- B. IPsec
- C. DMVPN
- D. GET VPN
- E. PPTP

Answer: BC

NEW QUESTION 259

A small organization of 20 employees is looking to deliver a network design service for modernizing customer networks to support advanced solutions.

- Project scope and weekly progress should be visualized by the management.
- Always consider feedback and make changes accordingly during the project.
- Should consider flexibility to change scope at the point of time.

Which project methodology meets the requirements and have the least impact on the outcome?

- A. Scrum
- B. LEAN
- C. Kanban
- D. Six-Sigma

Answer: A

Explanation:

<https://firebrand.training/uk/blog/scrum-vs-six-sigma-which-one-is-right-for-you>

NEW QUESTION 261

SDN is still maturing. Throughout the evolution of SDN, which two things will play a key role in enabling a successful deployment and avoiding performance visibility gaps in the infrastructure? (Choose two.)

- A. rapid on-demand growth
- B. dynamic real-time change
- C. falling back to old behaviors
- D. peer-to-peer controller infrastructure
- E. integration of device context

Answer: BE

NEW QUESTION 265

Which two types of planning approaches are used to develop business-driven network designs and to facilitate the design decisions? (Choose two)

- A. cost optimization approach
- B. strategic planning approach
- C. modular approach
- D. tactical planning approach
- E. business optimization approach

Answer: BD

NEW QUESTION 268

A network security team uses a purpose-built tool to actively monitor the campus network, applications, and user activity. The team also analyzes enterprise telemetry data from IPFIX data records that are received from devices in the campus network. Which action can be taken based on the augmented data?

- A. reduction in time to detect and respond to threats
- B. integration with an incident response plan
- C. adoption and improvement of threat-detection response
- D. asset identification and grouping decisions

Answer: A

NEW QUESTION 273

.....

Relate Links

100% Pass Your 400-007 Exam with ExamBible Prep Materials

<https://www.exambible.com/400-007-exam/>

Contact us

We are proud of our high-quality customer service, which serves you around the clock 24/7.

Viste - <https://www.exambible.com/>