

Exam Questions HPE6-A72

Aruba Certified Switching Associate Exam

<https://www.2passeasy.com/dumps/HPE6-A72/>



NEW QUESTION 1

Refer to the exhibit.

```
Access-1# debug l2mac event
Access-1# debug destination buffer
Access-1# page
```

```
show debug buffer
-----
2020-05-06:22:32:52. 601427|12mac-mgrd|LOG_DEBUG|AMM|-|L2MAC|L2MAC_EVENT|macmgr_m
ac_manager_handle_mac_event(1311), MAC=00:50:79:66:68:01, VLAN=1, Port=1/1/1 is
trying to be inserted
2020-05-06:22:32:52. 602027|12mac-mgrd|LOG_DEBUG|AMM|-|L2MAC|L2MAC_EVENT|macmgr_m
ac_manager_handle_mac_event(1328), MAC=00:50:79:66:68:01 was successfully inserted
```

What command will display the debug l2mac events?

- A. show module L2MAC
- B. show debug terminal
- C. show debug buffer module L2MAC
- D. show debug all

Answer: C

NEW QUESTION 2

Refer to the exhibit.

```
Access-1(config-if)# show run int 1/1/1
interface 1/1/1
  no shutdown
  no routing
  vlan trunk native 1
  vlan trunk allowed all
  exit
Access-1(config-if)# vlan 100
Access-1(config-vlan-100)# exit
Access-1(config)#
```

What commands will successfully enable the SVI for vlan 100 on interface 1/1/1 to produce the results displayed in the command show ip interface brief in the exhibit below?

```
Access-1(config)# show ip interface brief
Interface                IP Address                Interface Status
                          link/admin
1/1/2                    No Address                down/down
1/1/3                    No Address                down/down
1/1/4                    No Address                down/down
1/1/5                    No Address                down/down
vlan100                  10.1.1.1/24              up/up
```

- A. Access-1(config)# interface 1/1/1 Access-1(config-if)# routingAccess-1(config-if)# interface vlan 100Access-1(config-if-vlan)# ip address 10.1.1.1/24
- B. Access-1(config)# interface 1/1/1Access-1(config-if)# vlan trunk permit vlan 100 Access-1(config-if)# interface vlan 100Access-1(config-if-vlan)# ip address static 10.1.1.1/24
- C. Access-1(config)# interface vlan 100Access-1(config-if-vlan)# ip address 10.1.1.1/24
- D. Access-1(config-if)# vlan 100Access-1(config-vlan)# ip address 10.1.1.1/24

Answer: C

NEW QUESTION 3

Refer to the exhibit.

Internet Protocol Version 4 (TCP/IPv4) Properties

General

You can get IP settings assigned automatically if your network supports this capability. Otherwise, you need to ask your network administrator for the appropriate IP settings.

☐ Obtain an IP address automatically

☒ Use the following IP address:

IP address: 10 . 177 . 213 . 75

Subnet mask: 255 . 255 . 248 . 0

Default gateway: 10 . 177 . 208 . 1

☐ Obtain DNS server address automatically

☒ Use the following DNS server addresses:

Preferred DNS server: . . .

Alternate DNS server: . . .

☐ Validate settings upon exit

Advanced...

OK Cancel

Using the static IP address configured above, what is the converted binary value of the third octet assigned to the local interface?

- A. 11010101
- B. 10110001
- C. 01001011
- D. 11111000

Answer: A

NEW QUESTION 4

Match each network protocol to the correct default listening port and transport protocol. Not all answers will be used.

Default Port and Transport protocol		Network protocol
TCP 20, TCP 21	<input type="text"/>	<input type="text" value="DNS"/>
TCP 23	<input type="text"/>	<input type="text" value="FTP"/>
TCP 53	<input type="text"/>	<input type="text" value="HTTPS"/>
TCP 443	<input type="text"/>	<input type="text" value="Telnet"/>
UDP 20, UDP 21	<input type="text"/>	<input type="text" value="DHCP"/>
UDP 23	<input type="text"/>	
UDP 53	<input type="text"/>	
UDP 67	<input type="text"/>	

- A. Mastered
- B. Not Mastered

Answer: A

Explanation:

Default Port and Transport protocol		Network protocol
TCP 20, TCP 21	FTP	DNS
TCP 23	Telnet	FTP
TCP 53		HTTPS
TCP 443	HTTPS	Telnet
UDP 20, UDP 21		DHCP
UDP 23		
UDP 53	DNS	
UDP 67	DHCP	

NEW QUESTION 5

What is true about VSX? (Choose two.)

- A. VSX is ideal for Campus access layer deployments where ease of deployment is needed.
- B. VSX allows upgrading members with near zero downtime or loss of packets.
- C. VSX is available on all Aruba OS-CX switches except the 6300F model.
- D. VSX is implemented on static port switch
- E. VSX-plus needed to stack chassis together.
- F. VSX run separate control planes to reduce latency and improve performance.

Answer: BE

NEW QUESTION 6

What is the process where a compute device converts logical data bits into the correct physical representation depending on the media?

- A. Demodulation
- B. Modulation
- C. Propagation
- D. Encapsulation

Answer: D

NEW QUESTION 7

The customer has 778 developers testing computer games on the network. Which two actions resolve Broadcast storms? (Choose two.)

- A. Manually disable the redundant link to immediately resolve the impacted portion of the network.
- B. Utilize Spanning Tree to dynamically disable all redundant links in a segment.
- C. Setting switch ports to half-duplex will resolve Broadcast storms using Carrier Sense Multiple-Access Collision Detection (CSMA/CD).
- D. Enable single Area Open Shortest Path First (OSPF) on all Layer 2 switches, but do not enable routing.
- E. Utilize Spanning Tree to dynamically block Designated ports in addition to Alternate ports.

Answer: AB

NEW QUESTION 8

Which two statements are true regarding Checkpoints on Aruba switches? (Choose two.)

- A. Rolling back to a prior checkpoint triggers a reboot of the switch.
- B. Stacking switches using VSF or VSX will disable the Checkpoint feature.
- C. A checkpoint is a snapshot of the running-configuration and relevant metadata at the time the checkpoint was created.
- D. System-generated checkpoints are created after a configuration change and 5 minutes of inactivity.
- E. Checkpoints are available on AOS 5400R switches, as well as on all AOS-CX switches.

Answer: CE

NEW QUESTION 9

What is the login and password combination is used when first configuring an Aruba OS-CX switch from factory defaults?

- A. Login admin and password field empty.
- B. Login admin and password forgetme!
- C. Login admin and password password.

Answer: B

NEW QUESTION 10

What is the binary conversion of the hexadecimal value 0x2001?

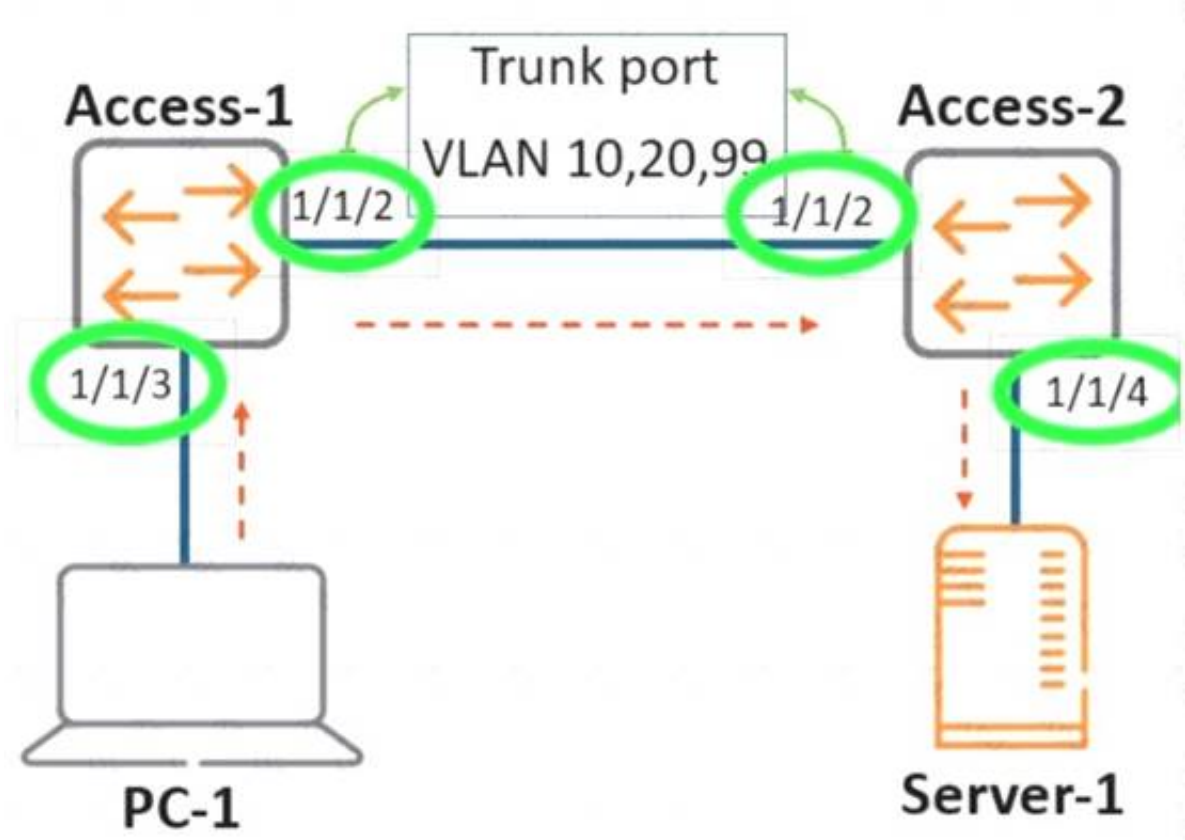
- A. 0010 0001
- B. 0002 0000 0000 0001
- C. 0011 0000 0000 0001
- D. 0010 0000 0000 0001

Answer: D

NEW QUESTION 10

Review the exhibit.

As the frame traverses from **PC-1** to **Server-1**, the VLAN tag will be removed. Click on the interface (circled in green) where the VLAN tag will be removed.



- A. Mastered
- B. Not Mastered

Answer: A

Explanation:

Diagram Description automatically generated
Port 1/1/4 on Access-2.

NEW QUESTION 11

Place the OSI Layers in the correct order. Arrange them from least to greatest, starting with Layer 1 on the top, and progressing to Layer 7 on the bottom.

OSI Layer	Order
Application Layer	
Data Link Layer	
Network Layer	
Physical Layer	
Presentation Layer	
Session Layer	
Transport Layer	

Navigation buttons: Right arrow, Left arrow, Up arrow, Down arrow.

- A. Mastered
- B. Not Mastered

Answer: A

Explanation:

Graphical user interface, application Description automatically generated

NEW QUESTION 12

What are two methods for remotely managing an Aruba AOS-CX switch? (Choose two.)

- A. SNMPv2c
- B. HTTPS
- C. USB-C console
- D. Telnet
- E. SSH

Answer: BE

NEW QUESTION 14

Which two types of routes can be found in the IP routing table of an Aruba AOS-CX switch? (Choose two.)

- A. Local
- B. EIGRP
- C. BGP
- D. ISIS
- E. RIPng

Answer: AC

NEW QUESTION 17

Match each description to the correct term.

Term	Description
ASIC	receives and sends frames by using Application-Specific Integrated Circuits (ASICs)
Control Plane	switches packets faster than using software
Data Plane	determines packet forwarding using routing, switching, security, and flow optimization
Management Plane	handles switch monitoring

- A. Mastered
- B. Not Mastered

Answer: A

Explanation:

Term	Description
ASIC	receives and sends frames by using Application-Specific Integrated Circuits (ASICs)
Control Plane	switches packets faster than using software
Data Plane	determines packet forwarding using routing, switching, security, and flow optimization
Management Plane	handles switch monitoring

NEW QUESTION 19

You need to remote into an AOS-CX switch using SSH in order to update the management IP address for future connections. Unfortunately, you mis-configured the IP address and are now locked out of the switch.

What command could you have issued before making changes that would have recovered the original switch configuration after ten minutes?

- A. checkpoint rollback 10
- B. checkpoint auto 10
- C. checkpoint auto confirm 10
- D. boot system secondary 10

Answer: B

NEW QUESTION 21

Which command can be used to find the serial number of an Aruba OS-CX switch?

- A. The command inventory
- B. The command version
- C. The command show running-configuration
- D. The command show system

Answer: D

NEW QUESTION 26

The section in blue can be ignored.

SW1(config)# interface 1/1/1-1/1/2

SW1(config-if-<1/1/1-1/1/2)# vlan access 2

SW1(config-if-<1/1/1-1/1/2)# exit

SW1(config)# interface 1/1/11-1/1/17

SW1(config-if-<1/1/11-1/1/17)# vlan access 17

SW1(config-if-<1/1/11-1/1/17)# exit

After completing the above commands, what is the expected output of show vlan with no other vlan commanded having been added?

A.

```
SW1# show vlan
```

VLAN	Name	Status	Reason	Type	Interfaces
1	DEFAULT_VLAN_1	up	ok	default	1/1/2
2		up	ok	static	1/1/2
11		up	ok	static	1/1/17
12		up	ok	static	1/1/17
13		up	ok	static	1/1/17
14		up	ok	static	1/1/17
15		up	ok	static	1/1/17
16		up	ok	static	1/1/17
17		up	ok	static	1/1/17

B.

```
SW1# show vlan
```

VLAN	Name	Status	Reason	Type	Interfaces
1	DEFAULT_VLAN_1	up	ok	default	1/1/1-1/1/24
2		up	ok	static	1/1/1-1/1/2
17		up	ok	static	1/1/11-1/1/17

C.

```
SW1# show vlan
```

VLAN	Name	Status	Reason	Type	Interfaces
2	DEFAULT_VLAN_2	up	ok	static	1/1/1-1/1/2
17		up	ok	static	1/1/11-1/1/17

D.

```
SW1# show vlan
```

VLAN	Name	Status	Reason	Type	Interfaces
1	DEFAULT_VLAN_1	up	ok	default	<output omitted>
2		up	ok	static	1/1/1-1/1/2
17		up	ok	static	1/1/11-1/1/17

- A. Option A
- B. Option B
- C. Option C
- D. Option D

Answer: D

NEW QUESTION 31

Match the terms to the correct layer of the OSI model.

Layer		Term
Transport Layer		Frames
Network Layer		Packets
Physical Layer		RF Signals
Data Link Layer		Segments

- A. Mastered
B. Not Mastered

Answer: A

Explanation:

Layer		Term
Transport Layer	Data Link Layer	Frames
Network Layer	Network Layer	Packets
Physical Layer	Physical Layer	RF Signals
Data Link Layer	Transport Layer	Segments

NEW QUESTION 36

Refer to the exhibit.

Port	Type	Product Number	Serial Number	Part Number
1/1/1	SFP+DAC1	J9281D	CN95KBZ00X	8121-1300
1/1/2	SFP+DAC1	J9281D	CN95KBZ086	8121-1300
1/1/5	SFP-BT	J8177D	CN96KK232S	1990-4640
1/1/7	SFP-BT	J8177D	CN96KK20R2	1990-4640
1/1/8	SFP-BT	J8177D	CN96KK232F	1990-4640
1/1/25	SFP28DAC3	JL488A	CN97KBG0BJ	8121-1743
1/1/26	SFP28DAC3	JL488A	CN97KBG057	8121-1743
1/1/45	SFP28DAC3	JL488A	CN97KBG0CW	8121-1743
1/1/46	SFP28DAC3	JL488A	CN97KBG0CX	8121-1743
1/1/47	SFP28DAC3	JL488A	CN97KBG0D6	8121-1743
1/1/48	SFP28DAC3	JL488A	CN97KBG038	8121-1743
Core - 1#				

What command (output shown above) gives the optics serial number and part number information?

- A. show interface physical
B. show interface transceiver
C. show inventory
D. show interface optics

Answer: B

NEW QUESTION 37

Which field in the IPv4 header indicates whether the IP packet carries TCP or UDP traffic?

- A. Protocol
B. IHL
C. TTL
D. Identification

Answer: A

NEW QUESTION 41

What are two primary concerns regarding layer two loops in a redundant topology? (Choose two.)

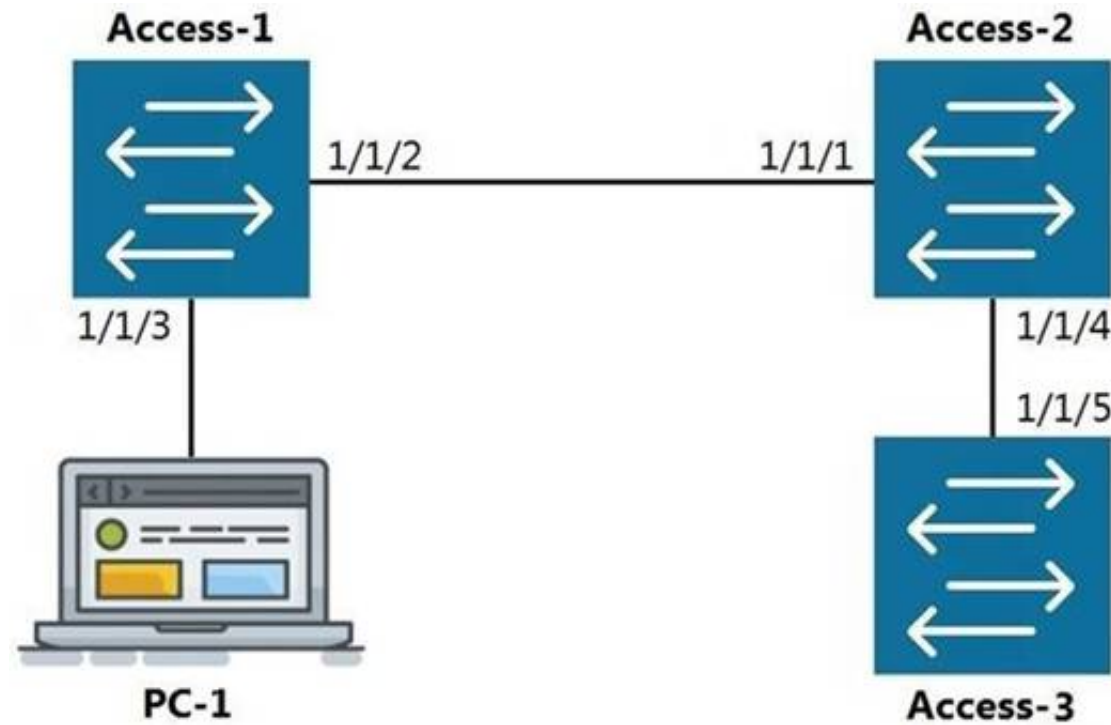
- A. routing loops
B. costs associated with upgrading from copper to fiber

- C. multiple frame copies leading to instability of the MAC address table
- D. security issues with a redundant loop indicating to hackers that a back-door exists
- E. broadcast storms

Answer: CD

NEW QUESTION 45

Refer to the exhibit.



The command show LLDP neighbor-info gets typed into Access-1. All switches are Aruba OS-CX switches. What is the output of this command?

- A.
- | LOCAL-PORT | CHASSIS-ID | PORT-ID | PORT-DESC | TTL | SYS-NAME |
|------------|-------------------|---------|-----------|-----|----------|
| 1/1/1 | 90:20:c2:bc:ed:00 | 1/1/2 | 1/1/2 | 120 | Access-2 |
| 1/1/5 | 90:20:c2:bc:ef:00 | 1/1/2 | 1/1/2 | 120 | Access-3 |
- B.
- | LOCAL-PORT | CHASSIS-ID | PORT-ID | PORT-DESC | TTL | SYS-NAME |
|------------|-------------------|---------|-----------|-----|----------|
| 1/1/1 | 90:20:c2:bc:ed:00 | 1/1/2 | 1/1/2 | 120 | Access-2 |
- C.
- | LOCAL-PORT | CHASSIS-ID | PORT-ID | PORT-DESC | TTL | SYS-NAME |
|------------|-------------------|---------|-----------|-----|----------|
| 1/1/2 | 90:20:c2:bc:ed:00 | 1/1/1 | 1/1/1 | 120 | Access-2 |
| 1/1/2 | 90:20:c2:bc:ef:00 | 1/1/5 | 1/1/5 | 120 | Access-3 |
- D.
- | LOCAL-PORT | CHASSIS-ID | PORT-ID | PORT-DESC | TTL | SYS-NAME |
|------------|-------------------|---------|-----------|-----|----------|
| 1/1/2 | 90:20:c2:bc:ed:00 | 1/1/1 | 1/1/1 | 120 | Access-2 |

- A. Option A
- B. Option B
- C. Option C
- D. Option D

Answer: D

NEW QUESTION 47

Refer to the exhibit.

```
Core-1# show interface mgmt
Address Mode           : static
Admin State            : up
Mac Address            : 90:20:c2:bc:8e:01
IPv4 address/subnet-mask : 10.1.1.1/24
Default gateway IPv4    : 10.1.1.254
IPv6 address/prefix     :
IPv6 link local address/prefix:
Default gateway IPv6    :
Primary Nameserver      : 10.254.1.21
Secondary Nameserver    :
Core-1# ping 10.1.1.254
connect: Network is unreachable
Core-1#
```

What change on Core-1 will result in a successful ping to 10.1.1.254 from the management interface?

- A. Use the command ping 10.1.1.254 vrf mgmt
- B. Use the command ping 10.1.1.254/24
- C. Change the Core-1 management address to 10.1.1.1/25 first
- D. The destination 10.1.1.254 requires configuring a static route

Answer: A

NEW QUESTION 48

With what other technology does Half Duplex communication closely match?

- A. a pair of fiber optic strands allowing transmit on one and receive on the other at the same time
- B. a mobile phone call
- C. point-to-point connections between two switches allowing concurrent transmit and receive
- D. CB radio using push-to-talk

Answer: D

NEW QUESTION 53

What are two features of the three-tier designs? (Choose two.)

- A. removes the distribution layer in favor of a spine-leaf design used in modern data center deployments
- B. adds a distribution layer to free up resources from the Core for improved performance and routing throughput
- C. a more scalable design over by leveraging a distribution layer to handle Layer 3 routing and access control in large deployments
- D. uses only Layer 2 access on the Access and the Core with Layer 3 routing and access control provided at the distribution layer
- E. is considered legacy by requiring a large flat layer-two broadcast domain from Core to Access and should be avoided

Answer: BC

NEW QUESTION 58

```
Core(config)# user admin password
```

```
Core(config)# interface mgmt
```

```
Core(config-if-mgmt)# ip static 10.254.16.89/22
```

```
Core(config-if-mgmt)# default-gateway 10.254.19.129
```

```
Core(config)# ssh server vrf mgmt
```

```
Core(config)# https-server vrf mgmt
```

You are tasked with configuring the Core switch to be managed by NetEdit. Currently, the Core switch is at factory-default settings.

Which two steps are missing? (Choose two.)

- A. Core(config)# https-server rest access-mode read-write
- B. Core(config-if-mgmt)# no shutdown
- C. Core(config-if-mgmt)# no tftp-server
- D. Core(config-if-mgmt)# enable
- E. Core(config)# https-server rest access-mode read-only

Answer: AB

NEW QUESTION 61

Which command will suppress LLDP messages from egressing on a given port while still allowing LLDP to be enabled on the switch?

- A. switch(config-if)# no lldp interface (port) transmit
- B. switch(config-if)# no lldp transmit
- C. switch(config-if)# no lldp receive
- D. switch(config)# no lldp

Answer: B

NEW QUESTION 63

Your customer has 349 users in a two-story building. What are two benefits of a 2-Tier design? (Choose two.)

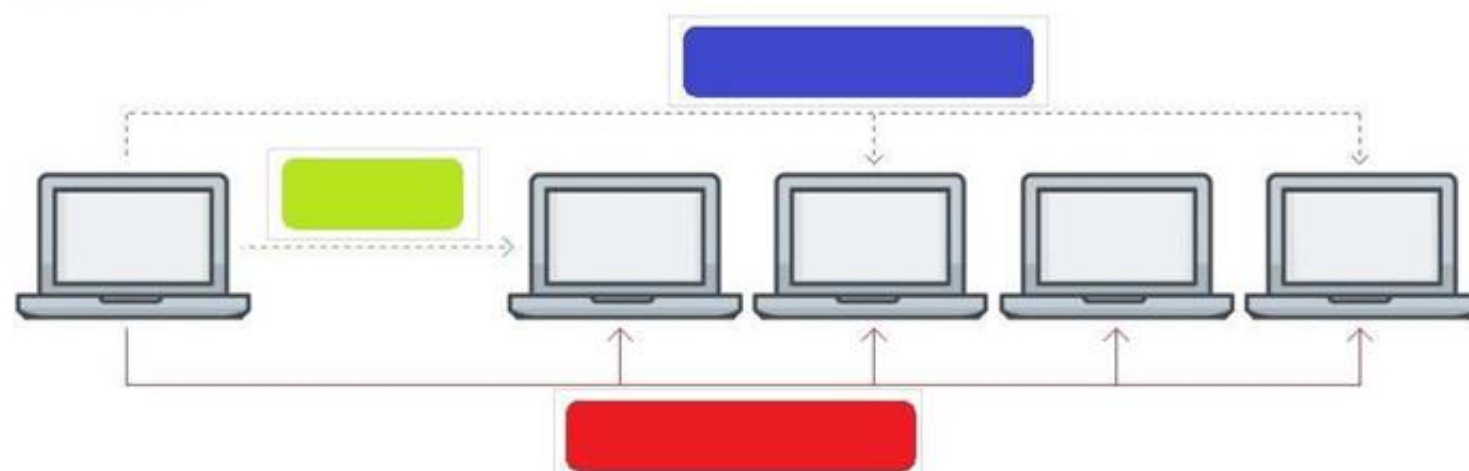
- A. Layer 2 and Layer 3 protocols run close to the endpoints to better implement ACL and QoS policy at the edge.
- B. Improved performance by offloading processing from the Access layer to the Core.
- C. Use of layer 2 switches at the access layer can process and route traffic from attached APs.
- D. Support for WAN/MPLS, Internet, and Data Center directly on the Collapsed core.
- E. Provides a more cost effective solution given that no additional switches are required for a third tier.

Answer: AE

NEW QUESTION 65

Click on the colored box that corresponds with the line that best represents Broadcast traffic flow.

Answer Area

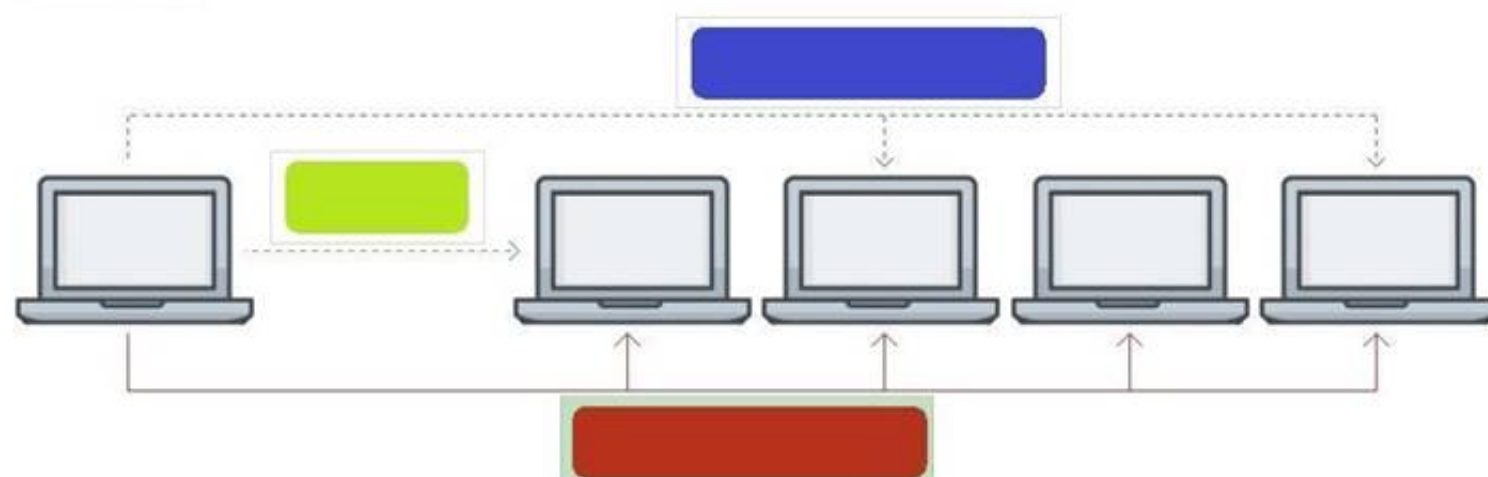


- A. Mastered
- B. Not Mastered

Answer: A

Explanation:

Answer Area



NEW QUESTION 66

Which two port characteristics must match between LAG interfaces? (Choose two.)

- A. Port number
- B. Duplex
- C. Member ID
- D. Media type
- E. Chassis number

Answer: BD

NEW QUESTION 68

What are two mechanisms supported on AOS-CX 6300 switches used in Multi-active Detection to determine the status of the Primary member? (Choose two.)

- A. Management interface split detection
- B. Peer switch-based detection
- C. Loopback keepalives
- D. ARP-based
- E. BFD

Answer: AD

NEW QUESTION 73

Refer to the exhibit.

Switch-1(config)# show spanning-tree exclude Disabled					
←---- output omitted ----→					
Port	Role	State	Cost	Priority	Type
1/1/1	Designated	Forwarding	4000	128	point_to_point
Lag1		Forwarding	2000	64	point_to_point
1/1/2	Designated	Forwarding	10000	128	point_to_point
1/1/3	Designated	Forwarding	20000	128	point_to_point

Switch-1 is not the root bridge. The ports shown are all the connected pointtopoint interfaces. What Role

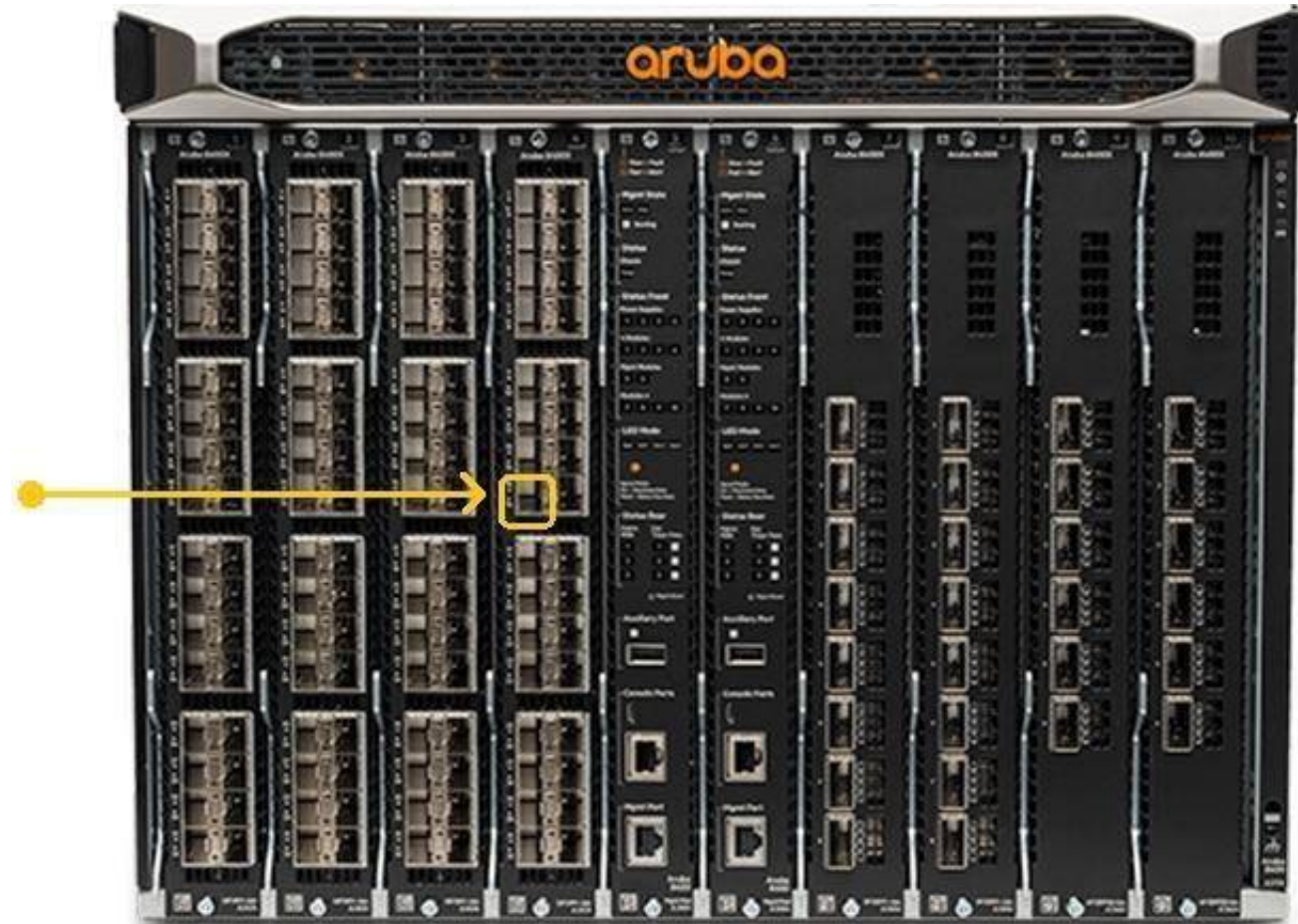
(hidden by the blue rectangle) will be assigned to the Lag 1 interface?

- A. Alternate
- B. Backup
- C. Root
- D. Designated

Answer: C

NEW QUESTION 78

Refer to the exhibit.



The Aruba 8400 in the exhibit is member 2 of a VSX stack.

Which command will enter the interface sub configuration mode for the port, indicated by the orange square?

- A. 8400(config)# interface 2/4/15
- B. 8400(config)# interface 1/7/16
- C. 8400(config)# interface 1/4/15
- D. 8400(config)# interface 2/3/17

Answer: A

NEW QUESTION 80

Which two commands will save the running-config so that changes will be loaded automatically on the next reboot? (Choose two.)

- A. write memory
- B. save
- C. copy config config1 config startup-config
- D. copy running-config startup-config
- E. copy running-config checkpoint boot-config

Answer: AD

NEW QUESTION 85

What is the correct description of a Multi-Layer Switch?

- A. a switch with Layer 3 routing capabilities but lacks any Layer 1 features as a consequence
- B. any switch that supports PoE, LLDP-MED and Flow Control
- C. has all the functionality of a Layer 2 switch and most of the functionality of a Layer 3 router
- D. multi-Layer refers specifically to using chassis switches with several line cards over stack port switches

Answer: C

NEW QUESTION 86

What command will save your configuration on an Aruba AOS-CX switch so that your changes automatically load on next reboot?

- A. copy running-config checkpoint startup-config
- B. copy startup-config running-config
- C. copy running-config initial-checkpoint
- D. copy running-config default

Answer: A

NEW QUESTION 90

Which Ethernet port combination does the Aruba 5400R ZL2 switch series support?

- A. 10/100 Megabit Ethernet, Gigabit Ethernet, and 100 Gigabit Ethernet
- B. Gigabit Ethernet, 25 Gigabit Ethernet, and 40 Gigabit Ethernet
- C. 10/100 Megabit Ethernet, Gigabit Ethernet, 25 Gigabit Ethernet, and 100 Gigabit Ethernet
- D. 10/100 Megabit Ethernet, Gigabit Ethernet, and 40 Gigabit Ethernet

Answer: D

NEW QUESTION 93

Refer to the exhibit.

```
T11-Access-2# show lldp configuration
```

```
LLDP Global Configuration
```

```
=====
```

```
LLDP Enabled           : Yes
LLDP Transmit Interval : 30
LLDP Hold Time Multiplier : 4
LLDP Transmit Delay Interval : 2
LLDP Reinit Time Interval : 2
```

```
TLVs Advertised
```

```
=====
```

```
Management Address
```

```
Port Description
```

```
Port VLAN-ID
```

```
System Capabilities
```

```
System Description
```

```
System Name
```

```
OUI
```

```
LLDP Port Configuration
```

```
=====
```

```
PORT          TX-ENABLED      RX-ENABLED
```

```
-----
```

```
1/1/1         Yes          Yes
```

```
1/1/2         Yes          Yes
```

```
<--- output omitted --->
```

```
1/1/27        Yes          Yes
```

```
1/1/28        Yes          Yes
```

What configuration is needed in order for "show LLDP configuration" to show this output?

- A. none; LLDP is enabled by default on Aruba switches
- B. configuring LLDP both globally and on the interfaces
- C. enabling LLDP on the interfaces only
- D. configuring LLDP globally only

Answer: A

NEW QUESTION 95

Which two options are the Layer 3 Routing protocols? (Choose two.)

- A. BGP
- B. LLDP
- C. OSPF
- D. MPLS
- E. 802.3ad

Answer: AC

NEW QUESTION 99

What are the benefits of a 3-Tier design over a 2-Tier? (Choose two.)

- A. Offloading processing from the Core without routing at the Access layer.
- B. Can use lower speed links between Core to Aggregation and Aggregation to Access given the use of an Aggregation layer.
- C. Lowering the cost of a deployment due to needing less switches overall.

- D. Better scalability in a campus with a large number of buildings.
- E. Gaining the flexibility to connect the Data-Center to any Access layer switch.

Answer: AD

NEW QUESTION 101

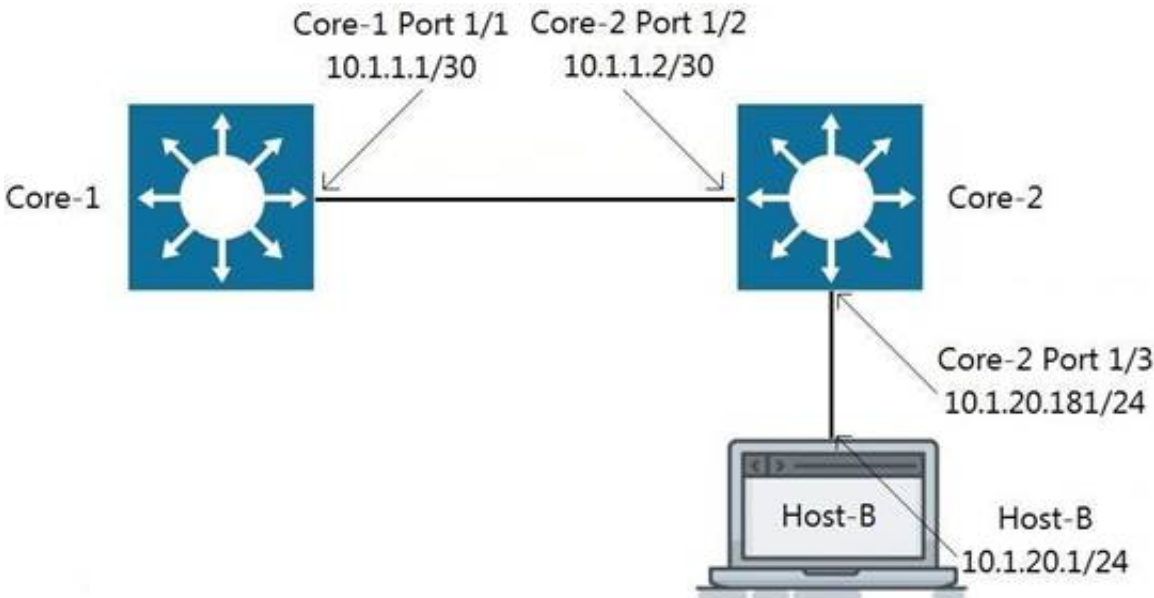
Which statement is true regarding modern switching requirements?

- A. Most older legacy switches had high port bandwidth utilization and were future proof designed to meet today's power-over-Ethernet needs.
- B. Requirements for PoE are normally addressed using AC to DC power adapter
- C. Concerns for port security for IoT devices are usually addressed using default wired encryption that all 802.3 Ethernet switches provide.
- D. While APs are common, most clients are still docked and only require traditional wired connections with only the occasional dedicated PoE switch to provide power for the low number of devices needed.
- E. Clients tend to prefer wireless connections, raising the need for PoE port acces
- F. There is also a growing amount of IoT devices that require security and port authentication options.

Answer: D

NEW QUESTION 102

Refer to the exhibit.



Traffic is failing between Core-1 and Host-B. IP addressing has correctly been applied, and all interfaces are attached to the vrf GREEN. Which configuration will correct the issue?

- A. Core-2(config)# ip route 0.0.0.0/0 10.1.1.1 vrf GREEN Host-B: assign the default-gateway address 10.1.20.181
- B. Core-1(config)# ip route 10.1.20.0/24 10.1.1.2 vrf GREEN Host-B: assign the default-gateway address 10.1.20.181
- C. Core-1(config)# ip route 10.1.20.0/24 10.1.1.2 vrf GREEN Host-B: assign the default-gateway address 10.1.20.1
- D. Host-B: assign the default-gateway address 10.1.20.181

Answer: B

NEW QUESTION 103

Match each network protocol to the correct server listening port. Not all answers will be used.

Server Listening Port		Protocol	
20,21	<input type="text"/>	<input type="text" value="DHCP"/>	
22	<input type="text"/>	<input type="text" value="SSH"/>	
23	<input type="text"/>	<input type="text" value="FTP"/>	
67	<input type="text"/>	<input type="text" value="Telnet"/>	
68	<input type="text"/>	<input type="text" value="HTTP"/>	
80	<input type="text"/>		
443	<input type="text"/>		

- A. Mastered
- B. Not Mastered

Answer: A

Explanation:

Diagram Description automatically generated

NEW QUESTION 105

.....

THANKS FOR TRYING THE DEMO OF OUR PRODUCT

Visit Our Site to Purchase the Full Set of Actual HPE6-A72 Exam Questions With Answers.

We Also Provide Practice Exam Software That Simulates Real Exam Environment And Has Many Self-Assessment Features. Order the HPE6-A72 Product From:

<https://www.2passeasy.com/dumps/HPE6-A72/>

Money Back Guarantee

HPE6-A72 Practice Exam Features:

- * HPE6-A72 Questions and Answers Updated Frequently
- * HPE6-A72 Practice Questions Verified by Expert Senior Certified Staff
- * HPE6-A72 Most Realistic Questions that Guarantee you a Pass on Your FirstTry
- * HPE6-A72 Practice Test Questions in Multiple Choice Formats and Updatesfor 1 Year