



Microsoft

Exam Questions AZ-800

Administering Windows Server Hybrid Core Infrastructure

About ExamBible

[Your Partner of IT Exam](#)

Found in 1998

ExamBible is a company specialized on providing high quality IT exam practice study materials, especially Cisco CCNA, CCDA, CCNP, CCIE, Checkpoint CCSE, CompTIA A+, Network+ certification practice exams and so on. We guarantee that the candidates will not only pass any IT exam at the first attempt but also get profound understanding about the certificates they have got. There are so many alike companies in this industry, however, ExamBible has its unique advantages that other companies could not achieve.

Our Advances

* 99.9% Uptime

All examinations will be up to date.

* 24/7 Quality Support

We will provide service round the clock.

* 100% Pass Rate

Our guarantee that you will pass the exam.

* Unique Gurantee

If you do not pass the exam at the first time, we will not only arrange FULL REFUND for you, but also provide you another exam of your claim, ABSOLUTELY FREE!

NEW QUESTION 1

SIMULATION - (Topic 4)

Task2

You need to ensure that the Azure file share named share1 can sync to on-premises servers.

The required source files are located in a folder named \\dc1.contoso.com\install. You do NOT need to specify the on-premises servers at this time.

- A. Mastered
- B. Not Mastered

Answer: A

Explanation:

One possible solution to ensure that the Azure file share named share1 can sync to on-premises servers is to use Azure File Sync. Azure File Sync allows you to centralize your file shares in Azure Files without giving up the flexibility, performance, and compatibility of an on-premises file server. It does this by transforming your Windows Servers into a quick cache of your Azure file share. You can use any protocol available on Windows Server to access your data locally (including SMB, NFS, and FTPS) and you can have as many caches as you need across the world1.

Here are the steps to configure Azure File Sync for the Azure file share named share1 and the source files located in a folder named \\dc1.contoso.com\install:

? On the Azure portal, create a Storage Sync Service in the same region as your storage account that contains the Azure file share named share1. For more information on how to create a Storage Sync Service, see [How to deploy Azure File Sync](#).

? On the on-premises server that hosts the folder named \\dc1.contoso.com\install, install the Azure File Sync agent. For more information on how to install the Azure File Sync agent, see [Install the Azure File Sync agent](#).

? On the on-premises server, register the server with the Storage Sync Service that you created in the first step. For more information on how to register a server with a Storage Sync Service, see [Register/unregister a server with Storage Sync Service](#).

? On the Azure portal, create a sync group that defines the sync topology for a set of files. In the sync group, select the Azure file share named share1 as the cloud endpoint and the folder named \\dc1.contoso.com\install as the server endpoint.

For more information on how to create a sync group, see [Create a sync group and wait for the initial sync to complete](#). You can monitor the sync progress on the Azure portal or on the on-premises server. For more information on how to monitor sync progress, see [\[Monitor sync progress\]](#).

Once the initial sync is complete, you can add more on-premises servers to the same sync group to sync and cache the content locally. You can also enable cloud tiering to optimize the storage space on the on-premises servers by tiering infrequently accessed or older files to Azure Files.

NEW QUESTION 2

SIMULATION - (Topic 4)

Task 12

You need to create a Group Policy Object (GPO) named GPO1 that only applies to a group named MemberServers.

- A. Mastered
- B. Not Mastered

Answer: A

Explanation:

To create a GPO named GPO1 that only applies to a group named MemberServers, you can follow these steps:

? On a domain controller or a computer that has the Remote Server Administration Tools (RSAT) installed, open Group Policy Management from the Administrative Tools menu or by typing gpmmc.msc in the Run box.

? In the left pane, expand your domain and right-click on Group Policy Objects.

Select New to create a new GPO.

? In the New GPO dialog box, enter GPO1 as the Name of the new GPO and click OK. You can also optionally select a source GPO to copy the settings from.

? Right-click on the new GPO and select Edit to open the Group Policy Management Editor. Here, you can configure the settings that you want to apply to the group

under the Computer Configuration and User Configuration nodes. For more information on how to edit a GPO, see [Edit a Group Policy Object](#).

? Close the Group Policy Management Editor and return to the Group Policy Management console. Right-click on the new GPO and select Scope. Here, you can specify the scope of management for the GPO, such as the links, security filtering, and WMI filtering.

? Under the Security Filtering section, click on Authenticated Users and then click on Remove. This will remove the default permission granted to all authenticated users and computers to apply the GPO.

? Click on Add and then type the name of the group that you want to apply the GPO to, such as MemberServers. Click OK to add the group to the security filter. You can also click on Advanced to browse the list of groups available in the domain.

? Optionally, you can also configure the WMI Filtering section to further filter the GPO based on the Windows Management Instrumentation (WMI) queries. For more information on how to use WMI filtering, see [Filter the scope of a GPO by using WMI filters](#).

? To link the GPO to an organizational unit (OU) or a domain, right-click on the OU or the domain in the left pane and select Link an Existing GPO. Select the GPO that you created, such as GPO1, and click OK. You can also change the order of preference by using the Move Up and Move Down buttons.

? Wait for the changes to replicate to other domain controllers. You can also force the update of the GPO by using the gpupdate /force command on the domain controller or the client computers. For more information on how to update a GPO, see [Update a Group Policy Object](#).

Now, you have created a GPO named GPO1 that only applies to a group named MemberServers. You can verify the GPO application by using the gpresult /r command on a member server and checking the Applied Group Policy Objects entry. You can also use the Group Policy Results wizard in the Group Policy Management console to generate a report of the GPO application for a specific computer or user. For more information on how to use the Group Policy Results wizard, see [Use the Group Policy Results Wizard](#).

NEW QUESTION 3

SIMULATION - (Topic 4)

Task 10

You need to configure Hyper-V to ensure that running virtual machines can be moved between SRV1 and SRV2 without downtime.

You do NOT need to move any virtual machines at this time.

- A. Mastered
- B. Not Mastered

Answer: A

Explanation:

One possible solution to configure Hyper-V to ensure that running virtual machines can be moved between SRV1 and SRV2 without downtime is to use Live Migration. Live Migration is a feature of Hyper-V that allows you to move a running virtual machine from one host to another without any noticeable interruption of service. To set up Live Migration between SRV1 and SRV2, you need to perform the following steps:

? On both SRV1 and SRV2, open Hyper-V Manager from the Administrative

Tools menu or by typing virtmgmt.msc in the Run box.

? In the left pane, right-click on the name of the server and select Hyper-V Settings.

? In the Hyper-V Settings dialog box, select Live Migrations in the navigation pane.

? Check the box Enable incoming and outgoing live migrations.

? Under Authentication protocol, select the method that you want to use to authenticate the live migration traffic between the servers. You can choose either Kerberos or CredSSP. Kerberos does not require you to sign in to the source server before starting a live migration, but it requires you to configure constrained delegation on the domain controller. CredSSP does not require you to configure constrained delegation, but it requires you to sign in to the source server through a local console session, a Remote Desktop session, or a remote Windows PowerShell session. For more information on how to configure constrained delegation, see [Configure constrained delegation](#).

? Under Performance options, select the option that best suits your network configuration and performance requirements. You can choose either TCP/IP or Compression or SMB. TCP/IP uses a single TCP connection for the live migration traffic. Compression uses multiple TCP connections and compresses the live migration traffic to reduce the migration time and network bandwidth usage. SMB uses the Server Message Block (SMB) 3.0 protocol and can leverage SMB features such as SMB Multichannel and SMB Direct. For more information on how to choose the best performance option, see [Choose a live migration performance option](#).

? Under Advanced Features, you can optionally enable the Use any available network for live migration option, which allows Hyper-V to use any available network adapter on the source and destination servers for live migration. If you do not enable this option, you need to specify one or more network adapters to be used for live migration by clicking on the Add button and selecting the network adapter from the list. You can also change the order of preference by using the Move Up and Move Down buttons.

? Click OK to apply the settings.

Now, you have configured Hyper-V to enable live migration between SRV1 and SRV2. You can use Hyper-V Manager or Windows PowerShell to initiate a live migration of a running virtual machine from one server to another.

NEW QUESTION 4

SIMULATION - (Topic 4)

Task 11

You need to ensure that all DHCP clients that get an IP address from SRV1 will be configured to use DC1 as a DNS server.

A. Mastered

B. Not Mastered

Answer: A

Explanation:

One possible solution to ensure that all DHCP clients that get an IP address from SRV1 will be configured to use DC1 as a DNS server is to use the DHCP scope options. DHCP scope options are settings that apply to all DHCP clients that obtain an IP address from a specific scope. You can use the DHCP scope options to specify the DNS server IP address, as well as other parameters such as the default gateway, the domain name, and the DNS suffix. Here are the steps to configure the DHCP scope options on SRV1:

? On SRV1, open DNS Manager from the Administrative Tools menu or by typing dnsmgmt.msc in the Run box.

? In the left pane, expand your DHCP server and click on IPv4.

? In the right pane, right-click on the scope that you want to configure and select Properties.

? In the Scope Properties dialog box, click on the DNS tab.

? Check the box Enable DNS dynamic updates according to the settings below. This option allows the DHCP server to register and update the DNS records for the DHCP clients.

? Select the option Always dynamically update DNS records. This option ensures that the DHCP server updates both the A and PTR records for the DHCP clients, regardless of whether they request or support dynamic updates.

? Check the box Discard A and PTR records when lease is deleted. This option allows the DHCP server to delete the DNS records for the DHCP clients when their leases expire or are released.

? Check the box Dynamically update DNS records for DHCP clients that do not request updates. This option allows the DHCP server to update the DNS records for the DHCP clients that do not support dynamic updates, such as legacy or non-Windows clients.

? In the DNS servers section, click on the Add button to add a new DNS server IP address.

? In the Add Server dialog box, enter the IP address of DC1, which is the DNS server that you want to use for the DHCP clients, and click Add.

? Click OK to close the Add Server dialog box and return to the Scope Properties dialog box.

? Click OK to apply the changes and close the Scope Properties dialog box.

Now, all DHCP clients that get an IP address from SRV1 will be configured to use DC1 as a DNS server. You can verify the DNS configuration by using the ipconfig /all command on a DHCP client computer and checking the DNS Servers entry. You can also check the DNS records for the DHCP clients by using the DNS Manager console on DC1.

NEW QUESTION 5

SIMULATION - (Topic 4)

Task 3

You need to configure SRV1 as a DNS server. SRV1 must be able resolve names from the contoso.com domain by using DC1. All other names must be resolved by using the root hint servers.

A. Mastered

B. Not Mastered

Answer: A

Explanation:

One possible solution to configure SRV1 as a DNS server that can resolve names from the contoso.com domain by using DC1 and all other names by using the root hint servers is to use conditional forwarding. Conditional forwarding allows a DNS server to forward queries for a specific domain name to another DNS server, while using the normal forwarding or root hint servers for other queries. Here are the steps to configure conditional forwarding on SRV1:

? On SRV1, open DNS Manager from the Administrative Tools menu or by typing dnsmgmt.msc in the Run box.

? In the left pane, right-click on Conditional Forwarders and select New Conditional Forwarder.

? In the New Conditional Forwarder dialog box, enter contoso.com as the DNS Domain name.

? In the IP addresses of the master servers box, enter the IP address of DC1, which is the DNS server for the contoso.com domain. You can also click on Resolve to verify the name resolution of DC1.

? Optionally, you can check the box Store this conditional forwarder in Active Directory, and replicate it as follows if you want to store and replicate the conditional forwarder in AD DS. You can also select the replication scope from the drop-down list.

? Click OK to create the conditional forwarder.

Now, SRV1 will forward any queries for the contoso.com domain to DC1, and use the root hint servers for any other queries. You can test the name resolution by using

the nslookup command on SRV1 or another computer that uses SRV1 as its DNS server. For example, you can run the following commands:

nslookup www.contoso.com nslookup www.microsoft.com

The first command should return the IP address of www.contoso.com from DC1, and the second command should return the IP address of www.microsoft.com from a root hint server.

NEW QUESTION 6

SIMULATION - (Topic 4)

Task 4

You need to register SRV1 to sync Azure file shares. The registration must use the 34646045 Storage Sync Service.

The required source files are located in a folder named \\dc1.contoso.com\install.

You do NOT need to configure file share synchronization at this time and you do NOT need to update the agent.

A. Mastered

B. Not Mastered

Answer: A

Explanation:

One possible solution to register SRV1 to sync Azure file shares using the 34646045 Storage Sync Service is to use the Register-AzStorageSyncServer cmdlet from the Az.StorageSync module. This cmdlet establishes a trust relationship between the server

and the Storage Sync Service, which is required for creating server endpoints and syncing files. Here are the steps to register SRV1

using the cmdlet:

? On SRV1, open PowerShell as an administrator and run the following command to

install the Az.StorageSync module if it is not already installed: Install-Module -Name Az.StorageSync

? Run the following command to import the Az.StorageSync module:

Import-Module -Name Az.StorageSync

? Run the following command to sign in to your Azure account and select the subscription that contains the 34646045 Storage Sync Service:

Connect-AzAccount

Select-AzSubscription -SubscriptionId <your-subscription-id>

? Run the following command to register SRV1 with the 34646045 Storage Sync Service. You need to specify the resource group name and the Storage Sync Service name as parameters:

Register-AzStorageSyncServer -ResourceGroupName <your-resource-group-name> -StorageSyncServiceName 34646045

? Wait for the registration to complete. You can verify the registration status by

checking the Registered servers tab on the Azure portal or by running the following command:

Get-AzStorageSyncServer -ResourceGroupName <your-resource-group-name> -StorageSyncServiceName 34646045

Now, SRV1 is registered with the 34646045 Storage Sync Service and ready to sync Azure file shares. You can create server endpoints on SRV1 and cloud endpoints on the Azure file shares to define the sync topology.

NEW QUESTION 7

- (Topic 3)

Note: This question is part of a series of questions that present the same scenario. Each question in the series contains a unique solution that might meet the stated goals. Some question sets might have more than one correct solution, while others might not have a correct solution.

After you answer a question in this section, you will NOT be able to return to it. As a result, these questions will not appear in the review screen.

Your network contains an Active Directory Domain Services (AD DS) domain named contoso.com.

You need to identify which server is the PDC emulator for the domain.

Solution: From Active Directory Domains and Trusts, you right-click Active Directory Domains and Trusts in the console tree, and then select Operations Master.

Does this meet the goal?

A. Yes

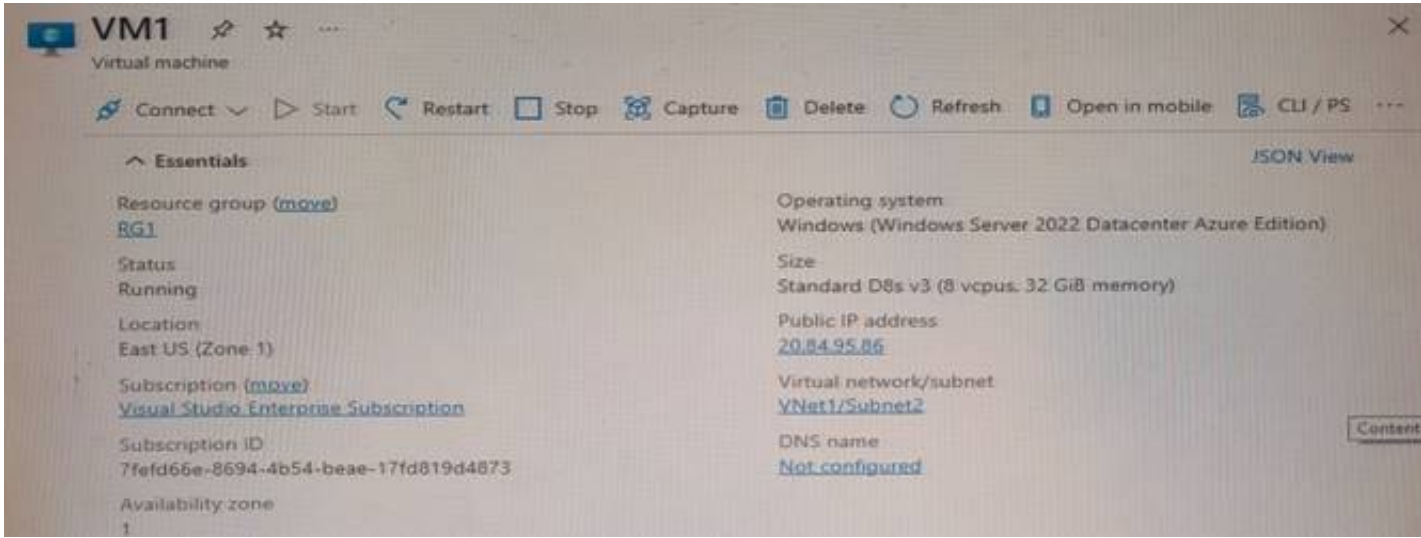
B. No

Answer: B

NEW QUESTION 8

- (Topic 3)

You have an Azure subscription that contains a virtual machine named VM1 as shown in the following exhibit.



The subscription has the disks shown in the following table.

Name	Resource group	Location	Availability zone
Disk1	RG1	East US	None
Disk2	RG2	East US	1
Disk3	RG1	Central US	None
Disk4	RG1	Central US	1

Which disks can you attach as data disks to VM1?

- A. Disk2 only
- B. Disk4 only
- C. Disk1 and Disk2 only
- D. Disk2 and Disk4 only
- E. Disk1, Disk3, and Disk4 only
- F. Disk1, Disk2, Disk3. and Disk4

Answer: C

NEW QUESTION 9

HOTSPOT - (Topic 3)

You have a Windows Server container host named Server1.

You start the containers on Server1 as shown in the following table.

Name	Image	Uses Hyper-V isolation	Process running on container
Container1	microsoft/iis	No	ProcessA
Container2	microsoft/iis	No	ProcessB
Container3	microsoft/iis	Yes	ProcessC
Container4	microsoft/iis	Yes	ProcessD

You need to validate the status of ProcessA and ProcessC.

Where can you verify that ProcessA and ProcessC are in a running state? To answer, select the appropriate options in the answer area.

NOTE: Each correct selection is worth one point.

Answer Area

ProcessA:

ProcessC:

- A. Mastered
- B. Not Mastered

Answer: A

Explanation:

Answer Area

ProcessA:

ProcessC:

NEW QUESTION 10

- (Topic 3)

Note: This question is part of a series of questions that present the same scenario. Each question in the series contains a unique solution that might meet the stated goals. Some question sets might have more than one correct solution, while others might not have a correct solution.

After you answer a question in this section, you will NOT be able to return to it. As a result, these questions will not appear in the review screen.

Your network contains an Active Directory Domain Services (AD DS) forest. The forest contains three Active Directory sites named Site1, Site2, and Site3. Each site contains two domain controllers. The sites are connected by using DEFAULTIPSITELINK.

You open a new branch office that contains only client computers.

You need to ensure that the client computers in the new office are primarily authenticated by the domain controllers in Site1.

Solution: You create an organization unit (OU) that contains the client computers in the branch office. You configure the Try Next Closest Site Group Policy Object (GPO) setting in a GPO that is linked to the new OU.

Does this meet the goal?

- A. Yes
- B. No

Answer: B

NEW QUESTION 10

- (Topic 3)

You have a server that runs Windows Server and contains a shared folder named UserData.

You need to limit the amount of storage space that each user can consume in UserData. What should you use?

- A. Storage Spaces
- B. Work Folders
- C. Distributed File System (DFS) Namespaces
- D. File Server Resource Manager (FSRM)

Answer: D

Explanation:

Reference:

<https://docs.microsoft.com/en-us/windows-server/storage/fsrm/fsrm-overview>

NEW QUESTION 12

- (Topic 3)

You have an Active Directory Domain Services (AD DS) domain. The domain contains three servers named Server 1, Server2, and Server3 that run Windows Server.

You sign in to Server1 by using a domain account and start a remote PowerShell session to Server2. From the remote PowerShell session, you attempt to access a resource on Server3. but access to the resource is denied.

You need to ensure that your credentials are passed from Server1 to Server3. The solution must minimize administrative effort. What should you do?

- A. Configure Kerberos constrained delegation.
- B. Configure Just Enough Administration (JEA).
- C. Configure selective authentication for the domain.
- D. Disable the Enforce user logon restrictions policy setting for the domain.

Answer: A

NEW QUESTION 15

HOTSPOT - (Topic 3)

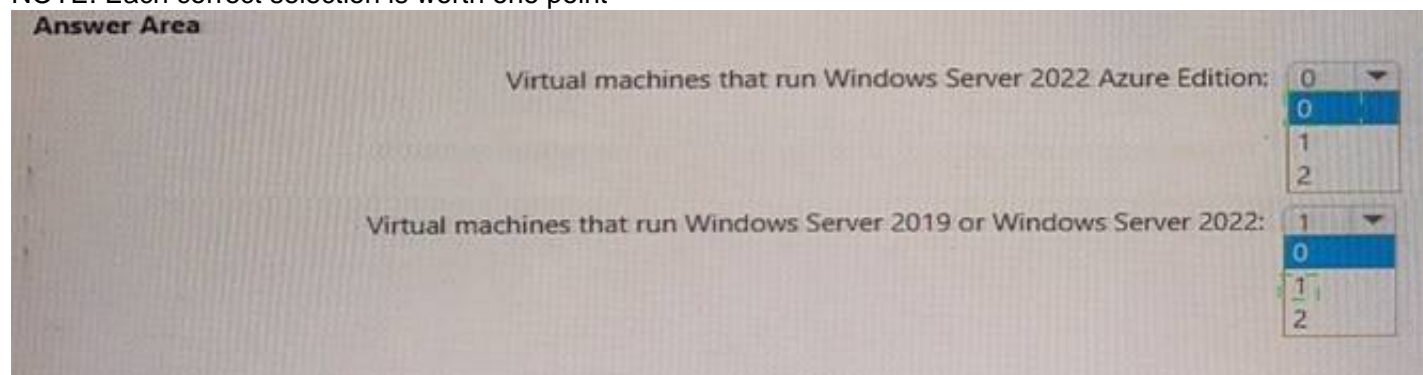
Your on-premises network contains a server named Server1 and uses an IP address space of 192.168.10.0/24.

You have an Azure virtual network that contains a subnet named Subnet1. Subnet1 uses an IP address space of 192.168.10.0/24.

You need to migrate Server1 to Subnet1. You must use Azure Extended Network to maintain the existing IP address of Server1.

What is the minimum number of virtual machines that you should deploy? To answer, select the appropriate options in the answer area.

NOTE: Each correct selection is worth one point



- A. Mastered
- B. Not Mastered

Answer: A

Explanation:

Answer Area

Virtual machines that run Windows Server 2022 Azure Edition: 0

Virtual machines that run Windows Server 2019 or Windows Server 2022: 1

NEW QUESTION 18

- (Topic 3)

You have an Azure virtual machine named VM1 that runs Windows Server and has the following configurations:

? Size: D2s_v4

? Operating system disk: 127-GiB standard SSD

? Data disk 128-GiB standard SSD

? Virtual machine generation: Gen 2

You plan to perform the following changes to VM1:

? Change the virtual machine size to D4s_v4.

? Detach the data disk.

? Add a new standard SSD.

Which changes require downtime for VM1?

- A. Detaching the data disk only and adding a new standard SSD.
- B. Detaching the data disk only.
- C. Changing the virtual machine size only.
- D. Adding a new standard SSD only.

Answer: C

Explanation:

Data disks can be added and detached without requiring downtime. Changing the VM size requires the VM to be restarted.

NEW QUESTION 23

HOTSPOT - (Topic 3)

You have an Azure subscription that contains a virtual network named VNet1. Vnet1 contains three subnets named Subnet1, Subnet2, and Subnet3. You deploy a virtual machine that has the following settings:

- Name: VM1
- Subnet: Subnet2
- Network interface name: NIC1
- Operating system: Windows Server 2022

You need to ensure that VM1 can route traffic between Subnet1 and Subnet3. The solution must minimize administrative effort.

What should you do? To answer, select the appropriate options in the answer area. NOTE: Each correct selection is worth one point.

Answer Area

From the Azure portal: Associate a routing table with Subnet2.

On VM1: Install and configure a network controller.

- A. Mastered
- B. Not Mastered

Answer: A

Explanation:

Answer Area

From the Azure portal: Associate a routing table with Subnet2.

On VM1: Install and configure a network controller.

NEW QUESTION 26

- (Topic 3)

You have a Windows Server container host named Server 1 and a container image named Image1.

You need to start a container from image1. The solution must run the container on a Hyper- V virtual machine. Which parameter should you specify when you run the docker run command?

- A. --expose
- B. --privileged
- C. --runtime
- D. --entrypoint
- E. --isolation

Answer: D

Explanation:

Reference:

<https://docs.microsoft.com/en-us/virtualization/windowscontainers/manage-containers/hyperv-container>

NEW QUESTION 29

DRAG DROP - (Topic 3)

Your network contains a single domain Active Directory Domain Services (AD DS) forest named contoso.com. The forest contains a single Active Directory site. You plan to deploy a read only domain controller (RODC) to a new datacenter on a server named Server1. A user named User1 is a member of the local Administrators group on Server1.

You need to recommend a deployment plan that meets the following requirements:

- ? Ensures that a user named User1 can perform the RODC installation on Server1
- ? Ensures that you can control the AD DS replication schedule to the Server1
- ? Ensures that Server1 is in a new site named RemoteSite1
- ? Uses the principle of least privilege

Which three actions should you recommend performing in sequence? To answer, move the appropriate actions from the list of actions to the answer area and arrange them in the correct order.

Actions	Answer Area
Instruct User1 to run the Active Directory Domain Services installation Wizard on Server1.	
Create a site and a subnet.	
Create a site link.	
Pre-create an RODC account.	
Add User1 to the Contoso\Administrators group.	

- A. Mastered
- B. Not Mastered

Answer: A

Explanation:

Box 1.

We need to create a site and subnet for the remote site. The new site will be added to the Default IP Site Link so we don't need to create a new site link. You configure the replication schedule on the site link.

Box 2.

When we pre-create an RODC account, we can specify who is allowed to attach the server to the prestaged account. This means that the User1 does not need to be added to the Domain Admins group.

Box3.

User1 can connect the RODC to the prestaged account by running the AD DS installation wizard.

NEW QUESTION 31

- (Topic 3)

Your network contains a DHCP server.

You plan to add a new subnet and deploy Windows Server to the subnet. You need to use the server as a DHCP relay agent.

Which role should you install on the server?

- A. Network Policy and Access Services
- B. Remote Access
- C. Network Controller
- D. DHCP Server

Answer: B

NEW QUESTION 33

- (Topic 3)

You have an Azure virtual machine named VM1 that runs Windows Server. You have an Azure subscription that has Microsoft Defender for Cloud enabled.

You need to ensure that you can use the Azure Policy guest configuration feature to manage VM1.

What should you do?

- A. Add the PowerShell Desired State Configuration (DSC) extension to VM1.
- B. Configure VM1 to use a user-assigned managed identity.
- C. Configure VM1 to use a system-assigned managed identity.
- D. Add the Custom Script Extension to VM1.

Answer: C

Explanation:

Reference:

<https://docs.microsoft.com/en-us/azure/virtual-machines/extensions/guest-configuration>

NEW QUESTION 38

- (Topic 3)

Your network contains a single-domain Active Directory Domain Services (AD DS) forest named conto.com. The forest contains the servers shown in the following exhibit table.

Name	Description
DC1	Domain controller
Server1	Member server

You plan to install a line-of-business (LOB) application on Server1. The application will install a custom windows services.

A new corporate security policy states that all custom Windows services must run under the context of a group managed service account (gMSA). You deploy a root key.

You need to create, configure, and install the gMSA that will be used by the new application.

Which two actions should you perform? Each correct answer presents part of the solution. NOTE: Each correct selection is worth one point.

- A. On Server1, run the install-ADServiceAccount cmdlet.
- B. On DC1, run the New-ADServiceAccount cmdlet.
- C. On DC1, run the Set_ADComputer cmdlet.
- D. ON DC1, run the Install-ADServiceAccount cmdlet.
- E. On Server1, run the Get-ADServiceAccount cmdlet.

Answer: AB

NEW QUESTION 43

- (Topic 3)

You have an on-premises Active Directory Domain Services (AD DS) domain that syncs with an Azure Active Directory (Azure AD) tenant Group writeback is enabled in Azure AD Connect.

The AD DS domain contains a server named Server1 Server 1 contains a shared folder named share1.

You have an Azure Storage account named storage2 that uses Azure AD-based access control. The storage2 account contains a share named shared

You need to create a security group that meets the following requirements:

- Can contain users from the AD DS domain
- Can be used to authorize user access to share 1 and share2 What should you do?

- A. in the AD DS domain, create a universal security group
- B. in the Azure AD tenant create a security group that has assigned membership
- C. in the Azure AD Tenant create a security group that has dynamic membership.
- D. in the Azure AD tenant create a Microsoft 365 group

Answer: B

NEW QUESTION 47

- (Topic 3)

Your network contains an Active Directory Domain Services (AD DS) forest. The forest contains three domains. Each domain contains 10 domain controllers.

You plan to store a DNS zone in a custom Active Directory partition.

You need to create the Active Directory partition for the zone. The partition must replicate to only four of the domain controllers.

What should you use?

- A. DNS Manager
- B. New-ADObject
- C. dnscnd.exe
- D. Windows Admin Center

Answer: D

NEW QUESTION 52

- (Topic 3)

You have an Azure subscription. The subscription contains a virtual machine named VM1 that runs Windows Server.

You build an app named App1.

You need to configure continuous integration and continuous deployment (CI/CD) of App1 to VM1.

What should you create first?

- A. a managed identity
- B. an App Service Environment
- C. an Azure Automation account
- D. an Azure DevOps organization

Answer: D

NEW QUESTION 53

DRAG DROP - (Topic 3)

Your network contains two Active Directory Domain Services (AD DS) forests named contoso.com and fabrikam.com. Contoso.com contains three child domains named amer.contoso.com, apac.contoso.com, and emea.contoso.com. Fabrikam.com contains a child domain named apac.fabrikam.com. A bidirectional forest trust exists between contoso.com and fabrikam.com.

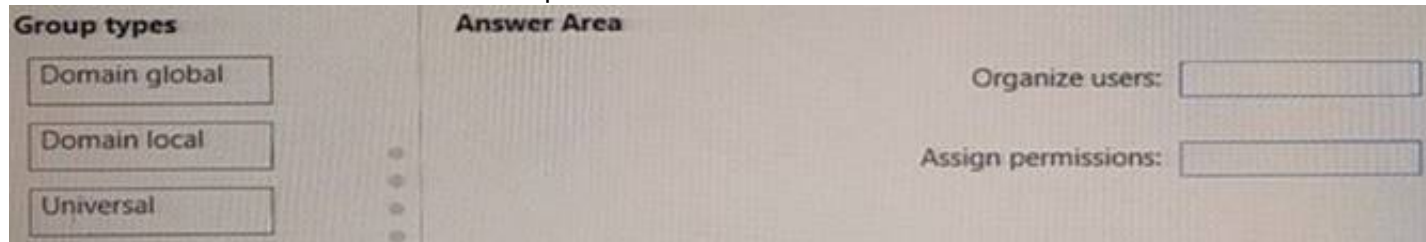
You need to provide users in the contoso.com forest with access to the resources in the fabrikam.com forest. The solution must meet the following requirements:

- Users in contoso.com must only be added directly to groups in the contoso.com forest.
- Permissions to access the resources in fabrikam.com must only be granted directly to groups in the fabrikam.com forest.
- The number of groups must be minimized.

Which type of groups should you use to organize the users and to assign permissions? To answer, drag the appropriate group types to the correct requirements.

Each group type may be used once, more than once, or not at all. You may need to drag the split bar between panes or scroll to view content.

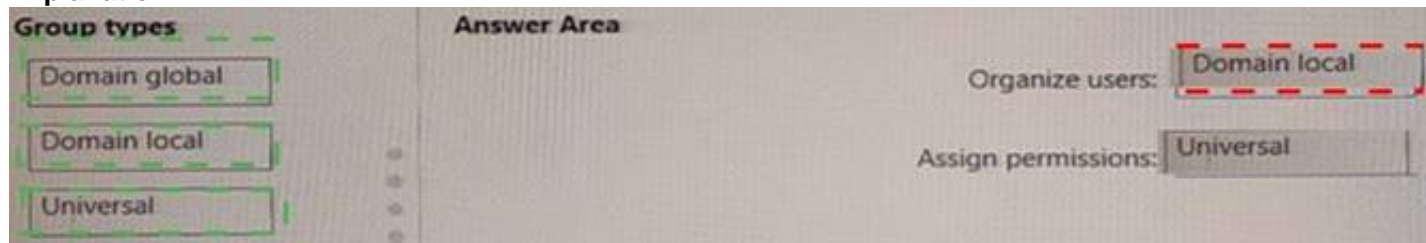
NOTE: Each correct selection is worth one point.



- A. Mastered
- B. Not Mastered

Answer: A

Explanation:



NEW QUESTION 55

- (Topic 3)

You have a server named Host1 that has the Hyper-V server role installed. Host1 hosts a virtual machine named VM1.

You have a management server named Server1 that runs Windows Server. You remotely manage Host1 from Server1 by using Hyper-V Manager.

You need to ensure that you can access a USB hard drive connected to Server1 when you connect to VM1 by using Virtual Machine Connection.

Which two actions should you perform? Each correct answer presents part of the solution. NOTE: Each correct selection is worth one point.

- A. From the Hyper-V Settings of Host1, select Allow enhanced session mode
- B. From Disk Management on Host1, attach a virtual hard disk.
- C. From Virtual Machine Connection, switch to a basic session.
- D. From Virtual Machine Connection select Show Options and then select the USB hard drive.
- E. From Disk Management on Host1, select Rescan Disks

Answer: AD

Explanation:

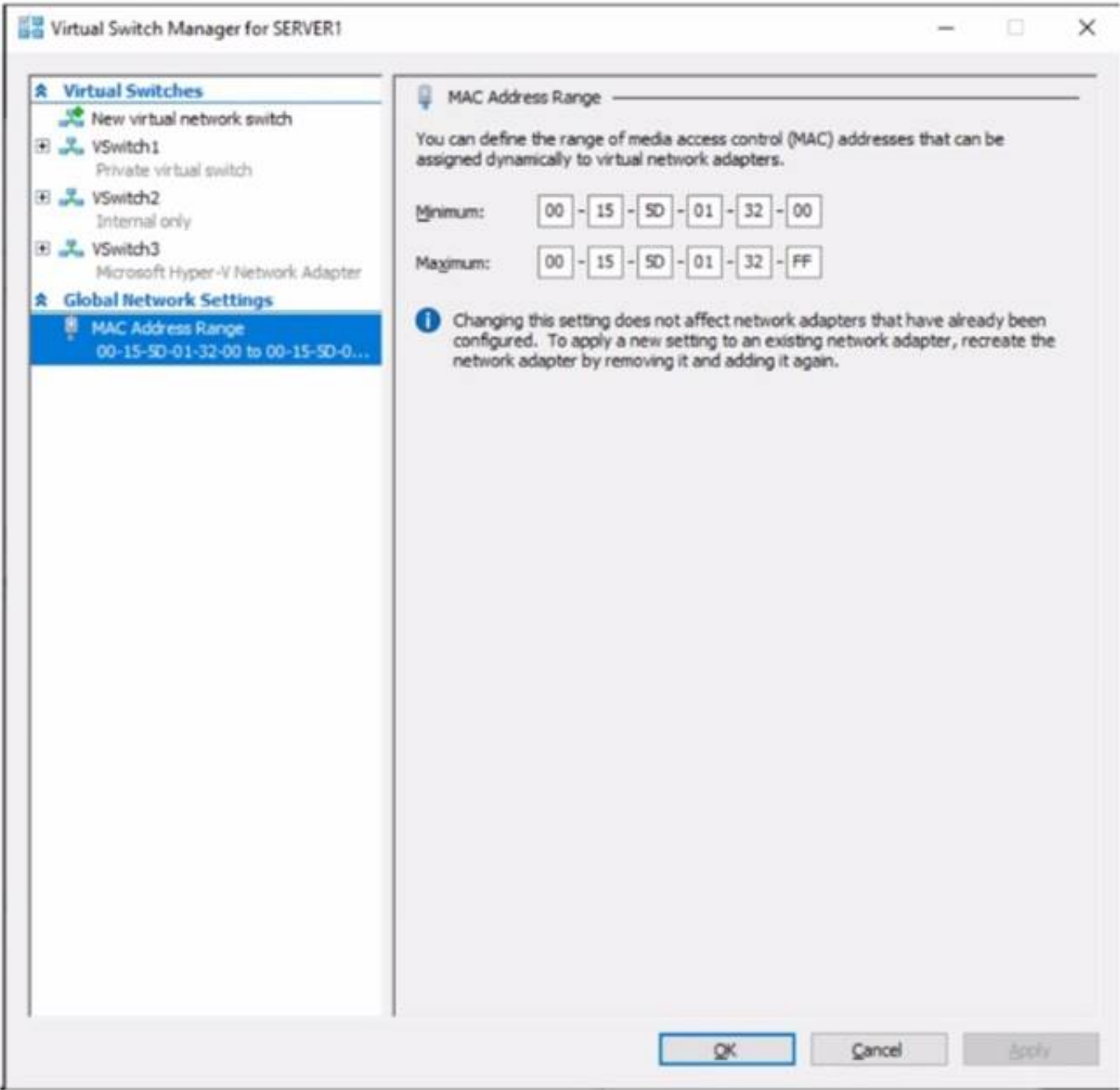
Reference:

<https://docs.microsoft.com/en-us/windows-server/virtualization/hyper-v/learn-more/use-local-resources-on-hyper-v-virtual-machine-with-vmconnect>

NEW QUESTION 56

HOTSPOT - (Topic 3)

You have a server named Server1 that runs Windows Server. Server1 has a single network interface and the Hyper-V virtual switches shown in the following exhibit.



Use the drop-down menus to select the answer choice that completes each statement based on the information presented in the graphic.
NOTE: Each correct selection is worth one point.

Answer Area

On Server1, you can create additional [answer choice].

private and internal virtual switches only

internal virtual switches only

private virtual switches only

private and internal virtual switches only

private, internal, and external virtual switches

Server1 can access network shares on virtual machines that are connected to [answer choice].

VSwitch1, VSwitch2, or VSwitch3

VSwitch2 only

VSwitch3 only

VSwitch1 or VSwitch2 only

VSwitch2 or VSwitch3 only

VSwitch1, VSwitch2, or VSwitch3

- A. Mastered
- B. Not Mastered

Answer: A

Explanation:

Answer Area

On Server1, you can create additional [answer choice].

private and internal virtual switches only

internal virtual switches only

private virtual switches only

private and internal virtual switches only

private, internal, and external virtual switches

Server1 can access network shares on virtual machines that are connected to [answer choice].

VSwitch1, VSwitch2, or VSwitch3

VSwitch2 only

VSwitch3 only

VSwitch1 or VSwitch2 only

VSwitch2 or VSwitch3 only

VSwitch1, VSwitch2, or VSwitch3

NEW QUESTION 57
HOTSPOT - (Topic 3)

Your network contains an Active Directory Domain Services (AD DS) domain. The domain contains the domain controllers shown in the following table.

Name	Description
DC1	Has the schema master, infrastructure master, and domain naming master roles
DC2	Has the PDC emulator and RID master roles and is a global catalog server
DC3	None

You need to configure DC3 to be the authoritative time server for the domain.
Which operations master role should you transfer to DC3, and which console should you use? To answer, select the appropriate options in the answer area.
NOTE: Each correct selection is worth one point.

Answer Area

Role:

PDC emulator

Domain naming master

Infrastructure master

PDC emulator

RID master

Schema master

Console:

Active Directory Users and Computers

Active Directory Admin

Active Directory Doma

Active Directory Sites and Services

Active Directory Users and Computers

- A. Mastered
- B. Not Mastered

Answer: A

Explanation:

Answer Area

Role:

PDC emulator

Domain naming master

Infrastructure master

PDC emulator

RID master

Schema master

Console:

Active Directory Users and Computers

Active Directory Admin

Active Directory Doma

Active Directory Sites and Services

Active Directory Users and Computers

NEW QUESTION 61

DRAG DROP - (Topic 3)

Your network contains an Active Directory domain named contoso.com. The domain contains group managed service accounts (gMSAs). You have a server named Server1 that runs Windows Server and is in a workgroup. Server1 hosts Windows containers.

You need to ensure that the Windows containers can authenticate to contoso.com. Which three actions should you perform in sequence? To answer, move the appropriate actions from the list of actions to the answer area and arrange them in the correct order.

Actions

- On Server1, install and run ccg.exe.
- On Server1, run New-CredentialSpec.
- In contoso.com, generate a Key Distribution Service (KDS) root key.
- In contoso.com, create a gMSA and a standard user account.
- From a domain-joined computer, create a credential spec file and copy the file to Server1.



Answer Area



- A. Mastered
- B. Not Mastered

Answer: A

Explanation:

Actions

On Server1, install and run ccg.exe.

On Server1, run New-CredentialSpec.

In contoso.com, generate a Key Distribution Service (KDS) root key.

In contoso.com, create a gMSA and a standard user account.

From a domain-joined computer, create a credential spec file and copy the file to Server1.

Answer Area

In contoso.com, generate a Key Distribution Service (KDS) root key.

In contoso.com, create a gMSA and a standard user account.

From a domain-joined computer, create a credential spec file and copy the file to Server1.

NEW QUESTION 64

HOTSPOT - (Topic 3)

You have a Windows Server container host named Server1 and an Azure subscription. You deploy an Azure container registry named Registry1 to the subscription.

On Server1, you create a container image named image1. You need to store imager in Registry1.

Which command should you run on Server1 ? To answer, select the appropriate options in the answer area.

NOTE: Each correct selection is worth one point.

Answer Area

docker

azcopy

xcopy

git

export

import

pull

push

Registry1.azurecr.io /image1

- A. Mastered
- B. Not Mastered

Answer: A

Explanation:

Answer Area

docker

azcopy

xcopy

git

export

import

pull

push

Registry1.azurecr.io /image1

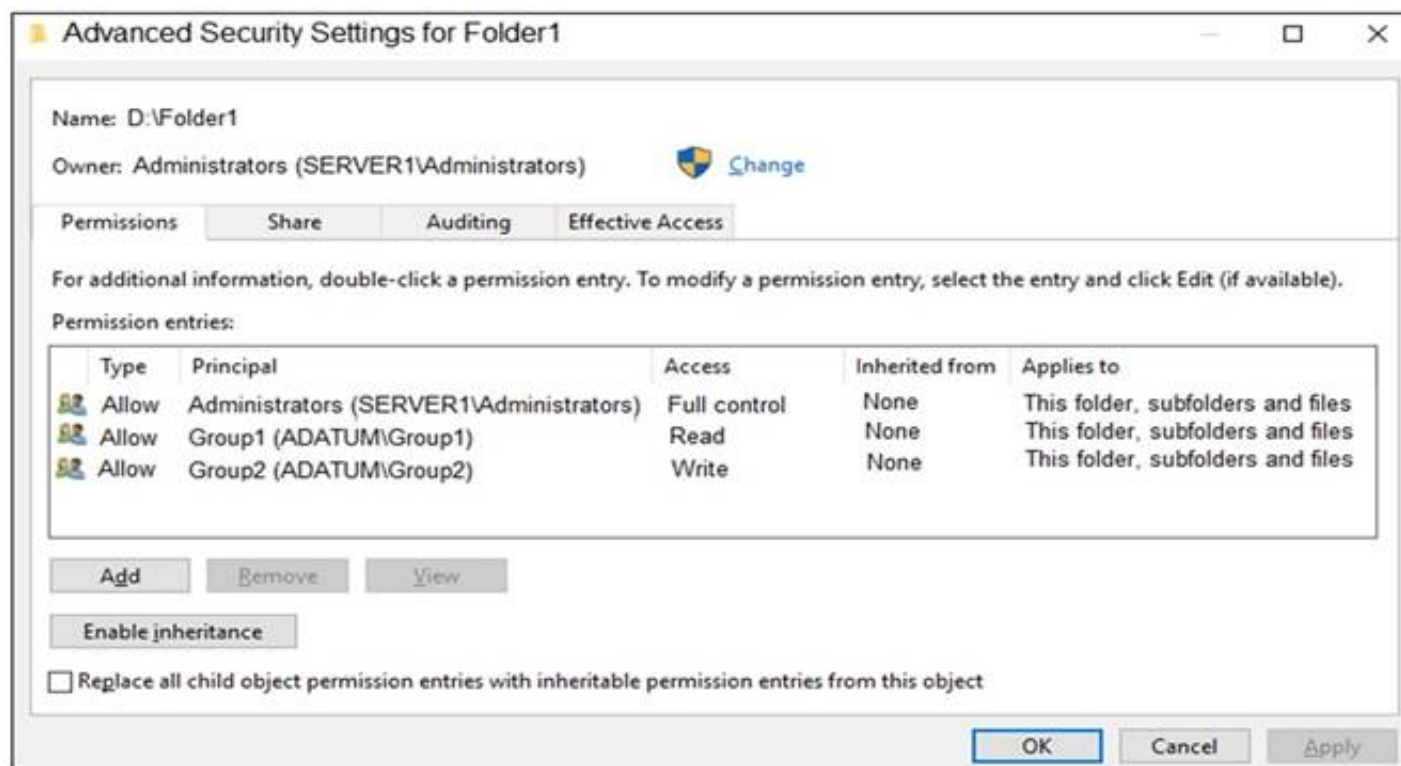
NEW QUESTION 67

HOTSPOT - (Topic 3)

Your network contains an Active Directory Domain Services (AD DS) domain named adatum.com. The domain contains a server named Server1 and the users shown in the following table.

Name	Member of
User1	Group1
User2	Group2
User3	Group3

Server1 contains a folder named D:\Folder1. The advanced security settings for Folder1 are configured as shown in the Permissions exhibit. (Click the Permissions tab.)



Folder1 is shared by using the following configurations:

```
Path           : D:\Folder1
Name           : Share1
ShareType      : FileSystemDirectory
FolderEnumerationMode : Unrestricted
```

The share permissions for Share1 are shown in the following table.

Group	Permission
Group1	Allow – Change
Group3	Allow – Full Control

For each of the following statements, select Yes if the statement is true. Otherwise, select No.

NOTE: Each correct selection is worth one point.

Statements	Yes	No
User1 can read the files in Share1.	<input type="radio"/>	<input type="radio"/>
User3 can delete files in Share1.	<input type="radio"/>	<input type="radio"/>
If User2 connects to \\Server1.adatum.com from File Explorer, Share1 will be listed.	<input type="radio"/>	<input type="radio"/>

- A. Mastered
- B. Not Mastered

Answer: A

Explanation:

To access files in a shared folder, you need to be granted permissions on the folder (NTFS permissions) AND permissions on the share. The most restrictive permission of the folder permissions and share permissions apply.

Box 1: Yes

Group1 has Read access to Folder1 and Change access to Share1. Therefore, User1 can read the files in Share1.

Box 2: No

Group3 has Full Control access to Share1. However, Group3 has no permissions configured Folder1. Therefore, User3 cannot access the files in Share1.

Box 3: Yes

Group2 has write permission to Folder1. However, Group2 has no permission on Share1. Therefore, users in Group2 cannot access files in the shared folder.

Access Based Enumeration when enabled hides files and folders that users do not have permission to access. However, Access Based Enumeration is not enabled on Share1.

This is indicated by the FolderEnumerationMode – Unrestricted setting. Therefore, the share will be visible to User2 even though User2 cannot access the shared folder.

NEW QUESTION 71

HOTSPOT - (Topic 3)

You have 10 on-premises servers that run Windows Server.

You plan to use Azure Network Adapter to connect the servers to the resources in Azure.
Which prerequisites do you require on-premises and in Azure? To answer, select the appropriate options in the answer area.
NOTE: Each correct selection is worth one point.

To configure the on-premises servers, use:

Azure CLI
Routing and Remote Access
Server Manager
Windows Admin Center

To connect the Azure resources and Azure Network Server Manager Adapter, use:

Azure Bastion
Azure Firewall
An Azure virtual network gateway
A private endpoint
A public Azure Load Balancer

- A. Mastered
B. Not Mastered

Answer: A

Explanation:

To configure the on-premises servers, use:

Azure CLI
Routing and Remote Access
Server Manager
Windows Admin Center

To connect the Azure resources and Azure Network Server Manager Adapter, use:

Azure Bastion
Azure Firewall
An Azure virtual network gateway
A private endpoint
A public Azure Load Balancer

NEW QUESTION 73

- (Topic 3)

You have an Azure subscription that contains the following resources:

- An Azure Log Analytics workspace
- An Azure Automation account
- Azure Arc.

You have an on-premises server named Server1 that is onboarded to Azure Arc. You need to manage Microsoft updates on Server1 by using Azure Arc. Which two actions should you perform? Each correct answer presents part of the solution. NOTE: Each correct selection is worth one point.

- A. Add Microsoft Sentinel to the Log Analytics workspace
B. On Server1, install the Azure Monitor agent
C. From the Automation account, enable Update Management for Server1.
D. From the Virtual machines data source of the Log Analytics workspace, connect Server1.

Answer: BC

Explanation:

Reference:

<https://docs.microsoft.com/en-us/azure/cloud-adoption-framework/manage/hybrid/server/best-practices/arc-update-management>

NEW QUESTION 75

DRAG DROP - (Topic 3)

You create a new Azure subscription.

You plan to deploy Azure Active Directory Domain Services (Azure AD DS) and Azure virtual machines. The virtual machines will be joined to Azure AD DS.

You need to deploy Active Directory Domain Services (AD DS) to ensure that the virtual machines can be deployed and joined to Azure AD DS.

Which three actions should you perform in sequence? To answer, move the appropriate actions from the list of actions to the answer area and arrange them in the correct order.

Actions

Modify the settings of the Azure virtual network.

Install the Active Directory Domain Services role.

Install Azure AD Connect.

Create an Azure virtual network.

Create an Azure AD DS instance.

Run the Active Directory Domain Service installation Wizard.

Answer Area

>

<

- A. Mastered
- B. Not Mastered

Answer: A

Explanation:

Actions

Modify the settings of the Azure virtual network.

Install the Active Directory Domain Services role.

Install Azure AD Connect.

Create an Azure virtual network.

Create an Azure AD DS instance.

Run the Active Directory Domain Service installation Wizard.

Answer Area

Create an Azure virtual network.

Create an Azure AD DS instance.

> Modify the settings of the Azure virtual network.

<

NEW QUESTION 77

- (Topic 3)
You have a server named Server1 that runs Windows Server.
You plan to host applications in Windows containers.
You need to configure Server1 to run containers. What should you install?

- A. Windows Admin Center
- B. the Windows Subsystem for Linux
- C. Docker
- D. Hyper-V

Answer: C

NEW QUESTION 78

HOTSPOT - (Topic 3)
Your network contains an Active Directory Domain Services (AD DS) domain named contoso.com.
The network contains the servers shown in the following table.

Name	Role	Domain/workgroup	Operating system
DC1	Active Directory Domain Services, DNS Server	contoso.com	Windows Server
Server1	DHCP Server	contoso.com	Windows Server
Server2	None	contoso.com	Windows Server Core
Server3	None	Workgroup1	Windows Server Core

You plan to implement IP Address Management (IPAM).
You need to use the Group Policy based provisioning method for managed servers. The solution must support server discovery.
What should you do? To answer, select the appropriate options in the answer area. NOTE: Each correct selection is worth one point.

Answer Area

Server on which to deploy the IPAM server role:

Server2

DC1

Server1

Server2

Server3

Servers that must be provisioned for IPAM:

DC1 and Server1

DC1 and Server1

DC1 and Server3

Server1 and Server2

Server2 and Server3

- A. Mastered
- B. Not Mastered

Answer: A

Explanation:

Answer Area

Server on which to deploy the IPAM server role:

Server2

Servers that must be provisioned for IPAM:

DC1 and Server1

NEW QUESTION 80

- (Topic 3)

You have an on-premises server named Server1 that runs Windows Server. You have an Azure virtual network that contains an Azure virtual network gateway. You need to connect only Server1 to the Azure virtual network. What should you use?

- A. Azure Network Adapter
- B. a Site-to-Site VPN
- C. an ExpressRoute circuit
- D. Azure Extended Network

Answer: B

Explanation:

Reference:
<https://docs.microsoft.com/en-us/windows-server/manage/windows-admin-center/azure/use-azure-network-adapter>

NEW QUESTION 83

HOTSPOT - (Topic 3)

Your company has a main office and 10 branch offices that are connected by using WAN links. The network contains an Active Directory domain.

All users have laptops and regularly travel between offices. You plan to implement BranchCache in the branch offices.


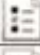
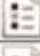
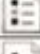
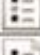


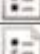
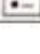
In each branch office, you install a server that runs Windows Server and the BranchCache feature. You register the servers in Active Directory.

You need to configure the laptops to use the local BranchCache server automatically. The solution must minimize administrative effort.

Which two Group Policy settings should you configure? To answer, select the settings in the answer area.

NOTE: Each correct selection is worth one point.

Answer Area

Setting	State
 Turn on BranchCache	Not configured
 Set BranchCache Distributed Cache mode	Not configured
 Set BranchCache Hosted Cache mode	Not configured
 Enable Automatic Hosted Cache Discovery by Service Connection...	Not configured
 Configure Hosted Cache Servers	Not configured
 Configure BranchCache for network files	Not configured
 Set percentage of disk space used for client computer cache	Not configured
 Set age for segments in the data cache	Not configured
 Configure Client BranchCache Version Support	Not configured

- A. Mastered
- B. Not Mastered

Answer: A

Explanation:

--> Turn on BranchCache

--> Enable Automatic Hosted Cache Discovery by Service Connection ...

NEW QUESTION 88

HOTSPOT - (Topic 3)

Your on-premises network contains a single-domain Active Directory Domain Services (AD DS) forest. You have an Azure AD tenant named contoso.com. The AD DS forest syncs with the Azure AD tenant by using Azure AD Connect.

You need to ensure that users in the forest that have a custom attribute of NoSync are excluded from synchronization.

How should you configure the Azure AD Connect cloudFiltered attribute, and which tool should you use? To answer, select the appropriate options in the answer area.

NOTE: Each correct selection is worth one point.

Answer Area

Attribute:

Tool:

Answer:

Answer Area

Attribute:

Tool:

- A. Mastered
- B. Not Mastered

Answer: A

NEW QUESTION 89

- (Topic 3)

You have an on-premises network that is connected to an Azure virtual network by using a Site-to-Site VPN. Each network contains a subnet that has the same IP address space. The on-premises subnet contains a virtual machine.

You plan to migrate the virtual machine to the Azure subnet.

You need to migrate the on premises virtual machine to Azure without modifying the IP address. The solution must minim administrative effort.

What should you implement before you perform the migration?

- A. Azure Extended Network
- B. Azure Virtual Network NAT
- C. Azure Application Gateway
- D. Azure virtual network peering

Answer: A

Explanation:

Reference:

<https://docs.microsoft.com/en-us/windows-server/manage/windows-admin-center/azure/azure-extended-network>

NEW QUESTION 94

HOTSPOT - (Topic 3)

You have an Active Directory Domain Services (AD DS) domain that contains the member servers shown in the following table.

Name	Operating system	Data Deduplication role service
Server1	Windows Server 2019	Installed
Server2	Windows Server 2022	Not installed
Server3	Windows Server 2022	Installed

Server3 contains a data disk named Disk1 that has Data Deduplication installed. Disk1 contains the files shown in the following table.

Name	Size
File1.txt	5 KB
File2.docx	800 KB
File3.sys	2 MB
File4.bmp	5 GB

Server3 fails.

You need to recover the files on Disk1.

Which files can you recover if you attach Disk1 to Server 1, and which files can you recover if you attach Disk1 to Server2? To answer, select the appropriate options in the answer area.

NOTE: Each correct selection is worth one point.
Answer Area

Server1:

File1.txt only
File1.txt only
File1.txt and File2.docx only
File1.txt and File3.sys only
File1.txt, File2.docx, File3.sys, and File4.bmp
No files can be recovered.

Server2:

File1.txt and File2.docx only
File1.txt only
File1.txt and File2.docx only
File1.txt and File3.sys only
File1.txt, File2.docx, File3.sys, and File4.bmp
No files can be recovered.

- A. Mastered
- B. Not Mastered

Answer: A

Explanation:
Answer Area

Server1:

File1.txt only
File1.txt only
File1.txt and File2.docx only
File1.txt and File3.sys only
File1.txt, File2.docx, File3.sys, and File4.bmp
No files can be recovered.

Server2:

File1.txt and File2.docx only
File1.txt only
File1.txt and File2.docx only
File1.txt and File3.sys only
File1.txt, File2.docx, File3.sys, and File4.bmp
No files can be recovered.

NEW QUESTION 96

HOTSPOT - (Topic 3)

Your network contains two VLANs for client computers and one VLAN for a datacenter. Each VLAN is assigned an IPv4 subnet. Currently, all the client computers use static IP addresses.

You plan to deploy a DHCP server to the VLAN in the datacenter.

You need to use the DHCP server to provide IP configurations to all the client computers. What is the minimum number of scopes and DHCP relays you should create? To answer, select the appropriate options in the answer area. NOTE: Each correct selection is worth one point.

Answer Area

DHCP scopes:

1
2
3
4

DHCP relays:

1
2
3
4

One selection for DHCP relays.

- A. Mastered
- B. Not Mastered

Answer: A

Explanation:

Box 1: 3

You need a DHCP scope for each of the three subnets.

Box 2: 2

The two client VLANs need a DHCP Relay Agent to forward DHCP requests to the DHCP server. The datacenter VLAN that contains the DHCP server does not require a DHCP Relay Agent.

NEW QUESTION 99

- (Topic 3)

Your network contains a multi-site Active Directory Domain Services (AD DS) forest. Each Active Directory site is connected by using manually configured site links and automatically generated connections.

You need to minimize the convergence time for changes to Active Directory. What should you do?

- A. For each site link, modify the options attribute.
- B. For each site link, modify the site link costs.
- C. For each site link, modify the replication schedule.
- D. Create a site link bridge that contains all the site links.

Answer: C

Explanation:

Reference:
<https://docs.microsoft.com/en-us/windows-server/identity/ad-ds/plan/determining-the-interval>

NEW QUESTION 103

DRAG DROP - (Topic 3)

You have an Azure subscription. The subscription contains a virtual machine named VM1 that runs Windows Server. VM1 contains a 128-GB operating system disk.

You need to increase the size of volume C on VM1 to 250 GB.

Which four actions should you perform in sequence? To answer, move the appropriate actions from the list of actions to the answer area and arrange them in the correct order.

Actions

Resize VM1.

Redeploy VM1.

Stop VM1.

Resize the operating system disk.

Start VM1.

Resize volume C.

>

<

Answer Area

↑

↓

- A. Mastered
- B. Not Mastered

Answer: A

Explanation:

Actions

Resize VM1.

Redeploy VM1.

Stop VM1.

Resize the operating system disk.

Start VM1.

Resize volume C.

>

<

Answer Area

Stop VM1.

Resize the operating system disk.

Start VM1.

Resize volume C.

↑

↓

NEW QUESTION 105

- (Topic 3)

You have an on-premises Active Directory Domain Services (AD DS) domain that syncs with an Azure Active Directory (Azure AD) tenant

You have several Windows 10 devices that are Azure AD hybrid-joined.

You need to ensure that when users sign in to the devices, they can use Windows Hello for Business.

Which optional feature should you select in Azure AD Connect?

- A. Device writeback
- B. Group writeback
- C. Password writeback
- D. Directory extension attribute sync
- E. Azure AD app and attribute filtering

Answer: C

Explanation:

Reference:
<https://docs.microsoft.com/en-us/windows/security/identity-protection/hello-for-business/hello-hybrid-cert-trust-prereqs>

NEW QUESTION 108

- (Topic 3)

Your on-premises network contains an Active Directory domain named contoso.com. You have an Azure AD tenant. You plan to sync contoso.com with the Azure AD tenant by using Azure AD Connect cloud sync. You need to create an account that will be used by Azure AD Connect cloud sync. Which type of account should you create?

- A. system-assigned managed identity
- B. group managed service account (gMSA)
- C. user
- D. InetOrgPerson

Answer: C

NEW QUESTION 109

HOTSPOT - (Topic 3)

Your network contains a two-domain on-premises Active Directory Domain Services (AD DS) forest named Contoso.com. The forest contains the domain controllers shown in the following table.

Name	Description	Domain	Active Directory site
DC1	Forest-wide and domain-wide FSMO role holder	contoso.com	Hub
DC2	Domain-wide FSMO role holder	child.contoso.com	Site1
RODC3	Read-only domain controller (RODC)	contoso.com	Site2

You create an Active Directory site named Site3. Site1, Site2 and Site3 each has a dedicated site link to the Hub site.

In Site3, you install a new server named Server1.

You need to promote Server1 to an ROOC in child.contoso.com by using the install from Media (IFM) option. The solution must minimize network traffic.

What should you do? To answer select the appropriate options in the answer area. NOTE: Each correct selection is worth one point.

Answer Area

Server to use to create the IFM source:

Tool to use to create the IFM source:

- A. Mastered
- B. Not Mastered

Answer: A

Explanation:

Answer Area

Server to use to create the IFM source:

Tool to use to create the IFM source:

NEW QUESTION 110

- (Topic 3)

Your network contains an on -premises Active Directory Domain Services (AD DS) domain named contoso.com The domain contains the objects shown in the following table.

Name	Type
User1	User
Group1	Universal security group
Group2	Domain local security group
Computer1	Computer

You plan to sync contoso.com with an Azure Active Directory (Azure AD) tenant by using Azure AD Connect You need to ensure that all the objects can be used in Conditional Access policies What should you do?

- A. Change the scope of Group2 to Universal
- B. Clear the Configure device writeback option.
- C. Change the scope o' Group1 and Group2 to Global
- D. Select the Configure Hybrid Azure AD join option.

Answer: D

Explanation:

Hybrid Azure AD join needs to be configured to enable Computer1 to be used in Conditional Access Policies. Synchronized users, universal groups and domain local groups can be used in Conditional Access Policies.

NEW QUESTION 112

HOTSPOT - (Topic 3)

You have a server named Server1 that runs Windows Server and has the Hyper-V server role installed.

You need 10 limit which Hyper-V module cmdlets helpdesk users can use when administering Server 1 remotely. You configure Just Enough Administration (JEA) and successfully build the role capabilities and session configuration files. How should you complete the PowerShell command? To answer, select the appropriate options in the answer area.
 NOTE: Each correct selection is worth one point.

Answer Area



- A. Mastered
- B. Not Mastered

Answer: A

Explanation:

Answer Area



NEW QUESTION 117

- (Topic 3)

Your network contains an on-premises Active Directory Domain Services (AD DS) domain named contoso.com. The domain contains three servers that run Windows Server and have the Hyper-V server role installed. Each server has a Switch Embedded Teaming (SET) team. You need to verify that Remote Direct Memory Access (RDMA) and all the required Windows Server settings are configured properly on each server. What should you use?

- A. Server Manager
- B. the validate-DCB cmdlet
- C. the Get-NetAdaptor cmdlet
- D. Failover Cluster Manager

Answer: B

Explanation:

Reference: <https://github.com/Microsoft/Validate-DCB>

NEW QUESTION 119

- (Topic 3)

Your network contains an Active Directory Domain Services (AD DS) domain.

You plan to use Active Directory Administrative Center to create a new user named User1. Which two attributes are required to create User1? Each correct answer presents part of the solution.

NOTE: Each correct selection is worth one point.

- A. Password
- B. Profile path
- C. User SamAccountName logon
- D. Full name
- E. First name
- F. User UPN logon

Answer: AC

NEW QUESTION 123

- (Topic 3)

You have five file servers that run Windows Server.

You need to block users from uploading video files that have the .mov extension to shared folders on the file servers. All other types of files must be allowed. The solution must minimize administrative effort.

What should you create?

- A. a Dynamic Access Control central access policy
- B. a file screen
- C. a Dynamic Access Control central access rule
- D. a data loss prevention (DLP) policy

Answer: B

Explanation:

Reference:

<https://docs.microsoft.com/en-us/windows-server/storage/fsrm/file-screening-management>

NEW QUESTION 126
HOTSPOT - (Topic 3)

You have on-premises servers that run Windows Server as shown in the following table.

Name	Local content
Server1	D:\Folder1\File1.docx
Server2	D:\Data1\File3.docx

You have an Azure file share named share1 that stores two files named File2.docx and File3.docx.
You create an Azure File Sync sync group that includes the following endpoints:

- ? share
- ? D:\Folder1 on Server1
- ? D:\Data1 on Server2

For each of the following statements, select Yes if the statement is true. Otherwise, select No.
NOTE: Each correct selection is worth one point.

Statements	Yes	No
You can create a file named File2.docx in D:\Folder1 on Server1.	<input type="checkbox"/>	<input type="checkbox"/>
You can create a file named File1.docx in D:\Data1 on Server2.	<input type="checkbox"/>	<input type="checkbox"/>
File3.docx will sync to Server1.	<input type="checkbox"/>	<input type="checkbox"/>

- A. Mastered
- B. Not Mastered

Answer: A

Explanation:

Statements	Yes	No
You can create a file named File2.docx in D:\Folder1 on Server1.	<input checked="" type="checkbox"/>	<input type="checkbox"/>
You can create a file named File1.docx in D:\Data1 on Server2.	<input checked="" type="checkbox"/>	<input type="checkbox"/>
File3.docx will sync to Server1.	<input type="checkbox"/>	<input checked="" type="checkbox"/>

NEW QUESTION 129
- (Topic 3)

You have a server named Server1 that runs Windows Server. Server1 has the storage pools shown in the following table.

Name	Number of 7,200-RPM HDDs	Number of 10,000-RPM HDDs	Number of SSDs
Pool1	4	4	None
Pool2	None	2	2
Pool3	8	None	4

You plan to create a virtual disk named VDisk1 that will use storage tiers. Which pools can you use to create VDisk1?

- A. Pool2 and Pool3 only
- B. Pool 2only
- C. Pool only
- D. Pool, Pool2, and Pool3
- E. Pool1 and Pool2 only
- F. Pool1 and Pool3 only
- G. Pool3 only

Answer: A

Explanation:

Storage tiering requires both standard HDDs and SSDs. We cannot use Pool1 because it does not have any SSDs.

NEW QUESTION 133

- (Topic 3)

You have a server named Server1 that runs Windows Server and contains a file share named Share1.

You need to prevent users from stoning MP4 files in Share1. The solution must ensure that the users can store other types of files in the share.

What should you configure on Server1?

- A. File Management Tasks
- B. NTFS Quotas
- C. NTFS permissions
- D. file screens

Answer: D

NEW QUESTION 138

HOTSPOT - (Topic 3)

You have an Azure subscription that contains the virtual machines shown in the following table.

Name	Operating system
VM1	Windows Server 2022 Datacenter: Azure Edition
VM2	Windows Server 2022 Datacenter: Azure Edition Core
VM3	Windows Server 2022 Datacenter
VM4	Windows Server 2019 Datacenter

You plan to implement Azure Automanage for Windows Server. You need to identify the operating system prerequisites.

Which virtual machines support Hotpatch, and which virtual machines support SMB over QUIC? To answer select the appropriate options in the answer area.

NOTE: Each correct selection is worth one point.

Answer Area

Hotpatch:

- VM1 only
- VM2 only
- VM1 and VM2 only**
- VM1, VM2, and VM3 only
- VM1, VM2, VM3, and VM4

SMB over QUIC:

- VM1 only**
- VM2 only
- VM1 and VM2 only
- VM1, VM2, and VM3 only
- VM1, VM2, VM3, and VM4

- A. Mastered
- B. Not Mastered

Answer: A

Explanation:

Answer Area

Hotpatch:

- VM1 only
- VM2 only
- VM1 and VM2 only**
- VM1, VM2, and VM3 only
- VM1, VM2, VM3, and VM4

SMB over QUIC:

- VM1 only**
- VM2 only
- VM1 and VM2 only
- VM1, VM2, and VM3 only
- VM1, VM2, VM3, and VM4

NEW QUESTION 140

HOTSPOT - (Topic 3)

You have a server named Server1 that runs Windows Server. Server1 has a just-a-bunch-of-disks (JBOD) enclosure attached.

You plan to create a storage pool on Server1 and a virtual disk that will use a mirror layout. You are considering whether to use a two-way or a three-way mirror layout.

What is the minimum number of disks required for each type of mirror layout? To answer, select the appropriate options in the answer area.
NOTE: Each correct selection is worth one point.

Answer Area

Two-way mirror:

1

2

3

4

5

6

Three-way mirror:

1

2

3

4

5

6

- A. Mastered
- B. Not Mastered

Answer: A

Explanation:

Answer Area

Two-way mirror:

1

2

3

4

5

6

Three-way mirror:

1

2

3

4

5

6

NEW QUESTION 145

- (Topic 3)

You have an on-premises Active Directory Domain Services (AD DS) domain that syncs with an Azure Active Directory (Azure AD) tenant. The on-premises network is connected to Azure by using a Site-to-Site VPN. You have the DNS zones shown in the following table.

Name	Location	Description
contoso.com	A domain controller named DC1 on the on-premises network	Provides name resolution on-premises
fabrikam.com	An Azure private DNS zone	Provides name resolution for all Azure virtual networks

You need to ensure that names from fabrikam.com can be resolved from the on-premises network. Which two actions should you perform? Each correct answer presents part of the solution. NOTE: Each correct selection is worth one point.

- A. Create a conditional forwarder for fabrikam.com on DC1.
- B. Create a stub zone for fabrikam.com on DC1.
- C. Create a secondary zone for fabrikam.com on DC1.
- D. Deploy an Azure virtual machine that runs Windows Server.
- E. Modify the DNS Servers settings for the virtual network.
- F. Deploy an Azure virtual machine that runs Windows Server.
- G. Configure the virtual machine as a DNS forwarder.

Answer: AE

Explanation:

Reference:

<https://docs.microsoft.com/en-us/azure/private-link/private-endpoint-dns#on-premises-workloads-using-a-dns-forwarder>

NEW QUESTION 146

- (Topic 3)

You have an on-premises server named Server1 that runs Windows Server. You have an Azure subscription that contains a virtual network named VNet1. You need to connect Server1 to VNet1 by using Azure Network Adapter. What should you use?

- A. Azure AD Connect
- B. Device Manager
- C. the Azure portal

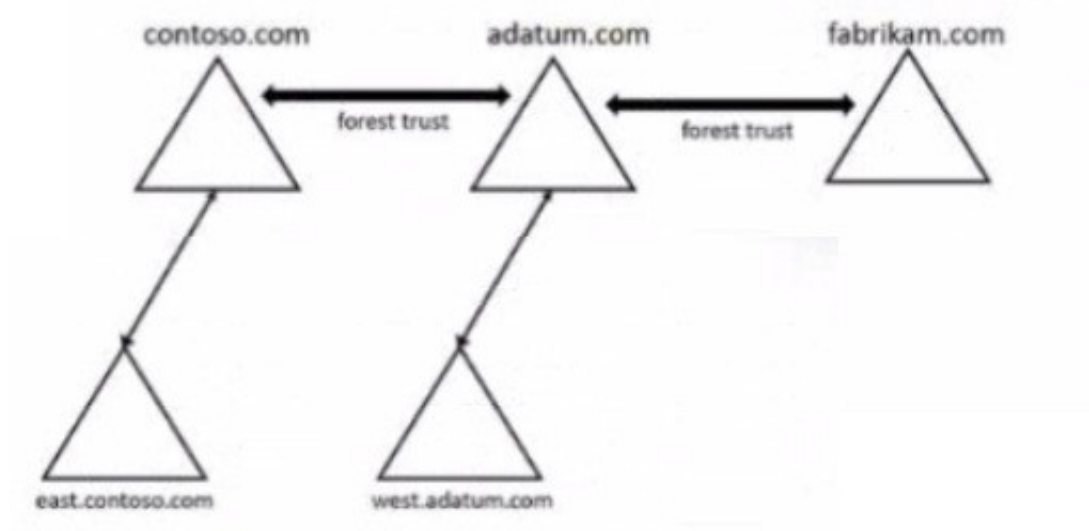
D. Windows Admin Center

Answer: D

NEW QUESTION 150

HOTSPOT - (Topic 3)

Your network contains three Active Directory Domain Services (AD DS) forest as shown in the following exhibit.



The network contains the users shown in the following table.

Name	Domain
User1	east.contoso.com
User2	fabrikam.com

The network contains the security groups shown in the following table.

Name	Type	Domain
Group1	Domain local	west.adatum.com
Group2	Universal	contoso.com
Group3	Universal	east.contoso.com

For each of the following statements, select Yes if the statement is true, Otherwise, select No.

NOTE: Each correct selection is worth one point.

Answer Area		
Statements	Yes	No
You can add User1 to Group1.	<input type="radio"/>	<input type="radio"/>
You can add User2 to Group3.	<input type="radio"/>	<input type="radio"/>
You can grant Group2 permissions to the resources in the fabrikam.com domain.	<input type="radio"/>	<input type="radio"/>

- A. Mastered
B. Not Mastered

Answer: A

Explanation:

NEW QUESTION 155

- (Topic 3)

You have a server named Server1 that hosts Windows containers. You plan to deploy an application that will have multiple containers. Each container will be You need to create a Docker network that supports the deployment of the application. Which type of network should you create?

- A. transparent
- B. I2bridge
- C. NAT
- D. I2tunnel

Answer: A

Explanation:

Reference:

<https://docs.microsoft.com/en-us/virtualization/windowscontainers/container-networking/network-drivers-topologies>

NEW QUESTION 160

HOTSPOT - (Topic 3)

You have an Azure subscription that contains the storage accounts shown in the following table.

Name	Location	Kind	Container	File share
storage1	East US	StorageV2	cont1	share1
storage2	East US	BlockBlobStorage	cont2	<i>Not applicable</i>
storage3	East US	FileStorage	<i>Not applicable</i>	share3
storage4	Central US	StorageV2	cont4	share4

In the East US Azure region, you create a storage sync service named Synd. You need to create a sync group in Synd.

Which storage accounts can you use, and what can you specify as the cloud endpoints? To

answer, select the appropriate options in the answer area. NOTE: Each correct selection is worth one point.

Answer Area

Storage accounts:

Cloud endpoints:

- A. Mastered
- B. Not Mastered

Answer: A

Explanation:
Answer Area

Storage accounts:

Cloud endpoints:

NEW QUESTION 162

- (Topic 3)

You have a server named Server1 that runs Windows Server and contains two drives named C and D. Server1 hosts multiple file shares. You enable Data Deduplication on drive D and select the General purpose file server workload. You need to minimize the space consumed by files that were recently modified or deleted. What should you do?

- A. Run the set-dedupvolume cmdlet and configure the scrubbing job.
- B. Run the Set-DedupSchedule Cmdlet and configure a GarbageCollection job.
- C. Run the set-Dedupvolume cmdlet and configure the InputOutputScale settings.
- D. Run the Set-DedupSchedule cmdlet and configure the optimization job.

Answer: B

NEW QUESTION 164

HOTSPOT - (Topic 3)

You have an on-premises server named Server1 that runs Windows Server and has internet connectivity.

You have an Azure subscription.

You need to monitor Server1 by using Azure Monitor.

Which resources should you create in the subscription, and what should you install on Server1? To answer, select the appropriate options in the answer area.

NOTE: Each correct selection is worth one point.

In the subscription, create:

- | |
|---|
| <input type="checkbox"/> An Azure Files storage account |
| <input type="checkbox"/> A Log Analytics workspace |
| <input type="checkbox"/> An Azure SQL database and a data collection rule |
| <input type="checkbox"/> An Azure Blob Storage account and a data collection rule |

On Server1, install:

- | |
|--|
| <input type="checkbox"/> The Azure Monitor agent |
| <input type="checkbox"/> The Analytics gateway |
| <input type="checkbox"/> The Device Health Attestation server role |

- A. Mastered
- B. Not Mastered

Answer: A

Explanation:

NEW QUESTION 169

HOTSPOT - (Topic 3)

Your network contains two Active Directory Domain Services (AD DS) forests named contoso.com and fabrikam.com. A two-way forest trust exists between the forests. Each forest contains a single domain. The domains contain the servers shown in the following table.

Name	Domain	Description
Server1	contoso.com	Hosts a Windows Admin Center gateway
Server2	fabrikam.com	Hosts resources that will be managed remotely by using Windows Admin Center on Server1

You need to configure resources based constrained delegation so that the users in contoso.com can use Windows Admin Center on Server2 to connect to Server1. How should you complete the command? To answer, select the appropriate options in the answer area.

NOTE: Each correct selection is worth one point.

Answer Area

Set-ADComputer -Identity

(Get-ADComputer server1.contoso.com)

(Get-ADComputer server2.fabrikam.com)

(Get-ADGroup 'Contoso\Domain Users')

(Get-ADGroup 'Fabrikam\Domain Users')

-PrincipalsAllowedToDelegateToAccount

(Get-ADComputer server1.contoso.com)

(Get-ADComputer server2.fabrikam.com)

(Get-ADGroup 'Contoso\Domain Users')

(Get-ADGroup 'Fabrikam\Domain Users')

- A. Mastered
B. Not Mastered

Answer: A

Explanation:

Answer Area

Set-ADComputer -Identity

(Get-ADComputer server1.contoso.com)

(Get-ADComputer server2.fabrikam.com)

(Get-ADGroup 'Contoso\Domain Users')

(Get-ADGroup 'Fabrikam\Domain Users')

-PrincipalsAllowedToDelegateToAccount

(Get-ADComputer server1.contoso.com)

(Get-ADComputer server2.fabrikam.com)

(Get-ADGroup 'Contoso\Domain Users')

(Get-ADGroup 'Fabrikam\Domain Users')

NEW QUESTION 172

- (Topic 3)

You have servers that have the DNS Server role installed. The servers are configured as shown in the following table.

Name	Office	Local DNS zone	IP address
Server1	Paris	contoso.com	10.1.1.1
Server2	New York	None	10.2.2.2

All the client computers in the New York office use Server2 as the DNS server. You need to configure name resolution in the New York office to meet the following requirements:

- ? Ensure that the client computers in New York can resolve names from contoso.com.
- ? Ensure that Server2 forwards all DNS queries for internet hosts to 131.107.100.200.

The solution must NOT require modifications to Server1. Each correct answer presents part of the solution. NOTE: Each correct selection is worth one point.

- A. a forwarder
B. a conditional forwarder
C. a delegation

- D. a secondary zone
- E. a reverse lookup zone

Answer: AB

Explanation:

A conditional forwarder is required for contoso.com. A forwarder is required for all other domains.
When you have a conditional forwarder and a forwarder configured, the conditional forwarder will be used for the specified domain.
You could use a secondary zone for contoso.com but that would require a configuration change on Server1.

NEW QUESTION 174

HOTSPOT - (Topic 2)

You need to configure Azure File Sync to meet the file sharing requirements. What should you do? To answer, select the appropriate options in the answer area.

NOTE Each correct selection is worth one point.

Answer Area

Minimum number of sync groups to create:

1

2

3

4

Minimum number of Storage Sync Services to create:

1

2

3

4

- A. Mastered
- B. Not Mastered

Answer: A

Explanation:

Answer Area

Minimum number of sync groups to create:

1

2

3

4

Minimum number of Storage Sync Services to create:

1

2

3

4

NEW QUESTION 179

DRAG DROP - (Topic 2)

Which three actions should you perform in sequence to meet the security requirements for Webapp1? To answer, move the appropriate actions from the list of actions to the answer area and arrange them in the correct order.

Actions

Create a standalone managed service account (sMSA) in AD DS.

Configure the IIS application pool to run as Network Service.

Configure the IIS application pool to run as a specified user account.

Create a group managed service account (gMSA) in Active Directory.

Create a system-assigned managed identity in Azure AD.

Create a user-assigned managed identity in Azure AD.

Create the Key Distribution Services (KDS) root key in AD DS.

Answer Area

>

<

- A. Mastered
- B. Not Mastered

Answer: A

Explanation:

Actions	Answer Area
Create a standalone managed service account (sMSA) in AD DS.	Configure the IIS application pool to run as Network Service.
Configure the IIS application pool to run as Network Service.	
Configure the IIS application pool to run as a specified user account.	Create a group managed service account (gMSA) in Active Directory.
Create a group managed service account (gMSA) in Active Directory.	<input checked="" type="radio"/> Create the Key Distribution Services (KDS) root key in AD DS.
Create a system-assigned managed identity in Azure AD.	
Create a user-assigned managed identity in Azure AD.	
Create the Key Distribution Services (KDS) root key in AD DS.	

NEW QUESTION 180

- (Topic 2)

You need to configure the Group Policy settings to ensure that the Azure Virtual Desktop session hosts meet the security requirements. What should you configure?

- A. security filtering for the link of GP04
- B. security filtering for the link of GPO1
- C. loopback processing in GPO4
- D. the Enforced property for the link of GP01
- E. loopback processing in GPO1
- F. the Enforced property for the link of GP04

Answer: C

NEW QUESTION 184

HOTSPOT - (Topic 2)

You need to configure network communication between the Seattle and New York offices. The solution must meet the networking requirements. What should you configure? To answer, select the appropriate options in the answer area. NOTE: Each correct selection is worth one point.

On a Virtual WAN hub:

An ExpressRoute gateway
A virtual network gateway
An ExpressRoute circuit connection

In the offices:

An ExpressRoute circuit connection
A Site-to-Site VPN
An Azure application gateway
An on premises data gateway

- A. Mastered
- B. Not Mastered

Answer: A

Explanation:

On a Virtual WAN hub:

An ExpressRoute gateway
A virtual network gateway
An ExpressRoute circuit connection

In the offices:

An ExpressRoute circuit connection
A Site-to-Site VPN
An Azure application gateway
An on premises data gateway

NEW QUESTION 186

DRAG DROP - (Topic 2)

You need to meet the security requirements for passwords.

Where should you configure the components for Azure AD Password Protection? To answer, drag the appropriate components to the correct locations. Each component may be used once, more than once, or not at all. You may need to drag the split bar between panes or scroll to view content.

NOTE Each correct selection is worth one point.

Locations

DC1 only

All the domain controllers

VM1 and VM2

The Azure AD tenant

Answer Area

The Azure AD Password Protection DC agent: Location

The Azure AD Password Protection proxy service: Location

A custom banned password list: Location

- A. Mastered
- B. Not Mastered

Answer: A

Explanation:

Locations

DC1 only

All the domain controllers

VM1 and VM2

The Azure AD tenant

Answer Area

The Azure AD Password Protection DC agent: All the domain controllers

The Azure AD Password Protection proxy service: VM1 and VM2

A custom banned password list: The Azure AD tenant

NEW QUESTION 190

- (Topic 2)

What should you implement for the deployment of DC3?

- A. Azure Active Directory Domain Services (Azure AD DS)
- B. Azure AD Application Proxy
- C. an Azure virtual machine
- D. an Azure AD administrative unit

Answer: C

Explanation:

Create a domain controller named dc3.corp.fabrikam.com in Vnet1.

In a hybrid network, you can configure Azure virtual machines as domain controllers. The domain controllers in Azure communicate with the on-premises domain controllers in the same way that on-premises domain controllers communicate with each other.

NEW QUESTION 193

- (Topic 2)

You need to configure remote administration to meet the security requirements. What should you use?

- A. just in time (JIT) VM access
- B. Azure AD Privileged Identity Management (PIM)
- C. the Remote Desktop extension for Azure Cloud Services
- D. an Azure Bastion host

Answer: A

Explanation:

Reference:

<https://docs.microsoft.com/en-us/azure/defender-for-cloud/just-in-time-access-usage?tabs=jit-config-asc%2Cjit-request-asc>

NEW QUESTION 194

- (Topic 1)

You need to meet the technical requirements for VM2. What should you do?

- A. Implement shielded virtual machines.
- B. Enable the Guest services integration service.
- C. Implement Credential Guard.
- D. Enable enhanced session mode.

Answer: D

NEW QUESTION 196

- (Topic 1)

You need to meet the technical requirements for Server1. Which users can currently perform the required tasks?

- A. Admin1 only
- B. Admin3 only
- C. Admin1 and Admin3 only
- D. Admin1 Admin2. and Admm3

Answer: C

NEW QUESTION 200

- (Topic 2)

You need to implement an availability solution for DHCP that meets the networking requirements.

Which two actions should you perform? Each correct answer presents part of the solution. NOTE: Each correct selection is worth one point.

- A. On DHCP1. create a scope that contains 25 percent of the IP addresses from Scope2.
- B. On the router in each office, configure a DHCP relay.
- C. DHCP2. configure a scope that contains 25 percent of the IP addresses from Scope 1 .
- D. On each DHCP server, install the Failover Clustering feature and add the DHCP clusterrole.
- E. On each DHCP scope, configure DHCP failover.

Answer: BE

Explanation:

Reference:

[https://docs.microsoft.com/en-us/previous-versions/windows/it-pro/windows-server-2012-r2-and-2012/hh831385\(v=ws.11\)](https://docs.microsoft.com/en-us/previous-versions/windows/it-pro/windows-server-2012-r2-and-2012/hh831385(v=ws.11))

NEW QUESTION 201

HOTSPOT - (Topic 1)

You need to meet the technical requirements for Server4.

Which cmdlets should you run on Server1 and Server4? To answer, select the appropriate options in the answer area.

NOTE: Each correct selection is worth one point.

Server1:

Enable-PSRemoting
Enable-ServerManagerStandardUserRemoting
Set-Item
Start-Service

Server4:

Enable-PSRemoting
Enable-ServerManagerStandardUserRemoting
Set-Item
Start-Service

- A. Mastered
- B. Not Mastered

Answer: A

Explanation:

Server1:

Enable-PSRemoting
Enable-ServerManagerStandardUserRemoting
Set-Item
Start-Service

Server4:

Enable-PSRemoting
Enable-ServerManagerStandardUserRemoting
Set-Item
Start-Service

NEW QUESTION 205
HOTSPOT - (Topic 1)
You need to meet the technical requirements for VM1.
Which cmdlet should you run first? To answer, select the appropriate options in the answer area.
NOTE: Each correct selection is worth one point.

Answer Area

Set-VM
Set-VMBios
Set-VMHost
Set-VMFirmware
Set-VMProcessor

VM1

-NewVMName
-GuestControlledCacheTypes
-EnableHostResourceProtection
-ExposeVirtualizationExtensions

\$true

- A. Mastered
- B. Not Mastered

Answer: A

Explanation:
Graphical user interface, text, application Description automatically generated

NEW QUESTION 210
- (Topic 1)
You need to meet the technical requirements for VM3 On which volumes can you enable Data Deduplication?

- A. D and E only
- B. C, D, E, and F
- C. D only
- D. C and D only
- E. D, E, and F only

Answer: A

Explanation:
Reference:
<https://docs.microsoft.com/en-us/windows-server/storage/data-deduplication/interop>

NEW QUESTION 214
- (Topic 1)
You need to meet the technical requirements for the site links. Which users can perform the required tasks?

- A. Admin1 only
- B. Admin1 and Admin3 only
- C. Admin1 and Admin2 only
- D. Admin3 only
- E. Admin1, Adrrun2. and Admin3

Answer: C

Explanation:
Membership in the Enterprise Admins group or the Domain Admins group in the forest root domain is required.

NEW QUESTION 217
.....

Relate Links

100% Pass Your AZ-800 Exam with ExamBible Prep Materials

<https://www.exambible.com/AZ-800-exam/>

Contact us

We are proud of our high-quality customer service, which serves you around the clock 24/7.

Viste - <https://www.exambible.com/>