

## Exam Questions HPE6-A73

Aruba Certified Switching Professional Exam

<https://www.2passeasy.com/dumps/HPE6-A73/>



### NEW QUESTION 1

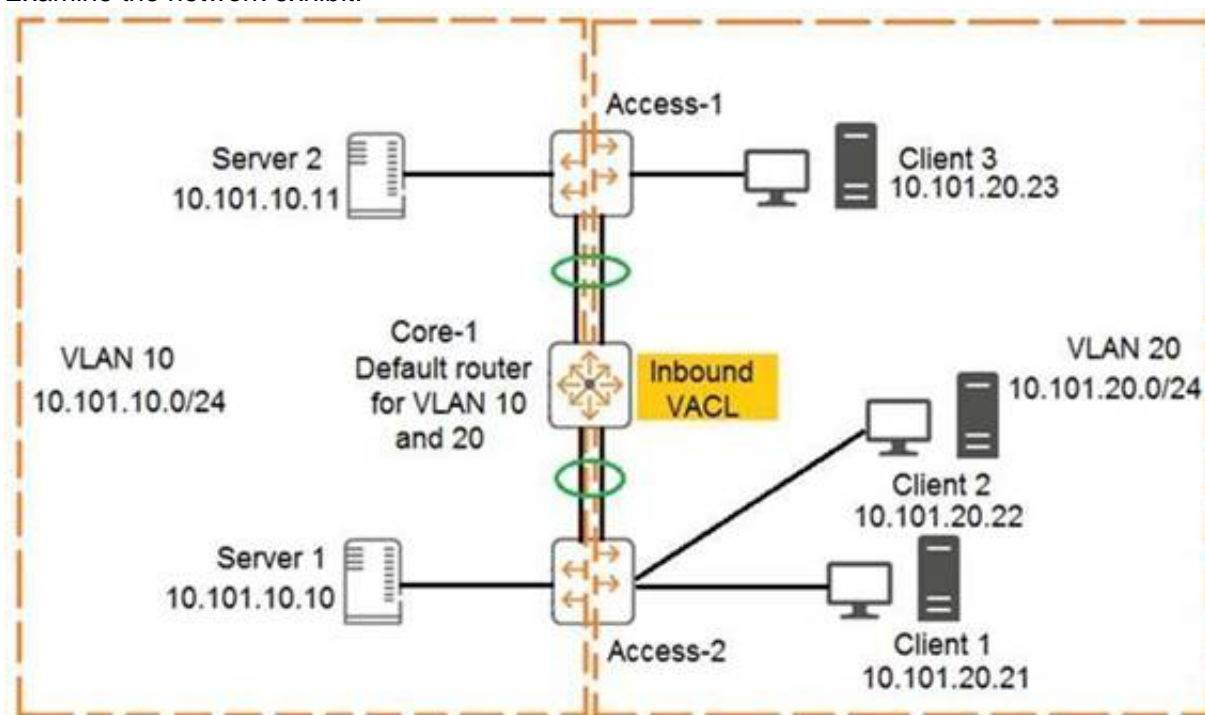
An administrator is defining a VSX LAG on a pair of AOS-CX switches that are defined as primary and secondary. The VSX LAG fails to establish successfully with a remote switch; however, after verification, the remote switch is configured correctly. The administrator narrows down the problem to the configuration on the AOS-CX switches. What would cause this problem?

- A. Local optimization was not enabled on the VSX LAG
- B. The VSX LAG hash does not match the remote peer
- C. The VSX LAG interfaces are in layer-3 mode
- D. LACP was enabled in active mode on the VSX LAG

**Answer: B**

### NEW QUESTION 2

Examine the network exhibit:



The ACL configuration defined on Core-1 is as follows:

```
Core-1(config)# access-list ip example
Core-1(config-acl-ip)# permit ip 10.101.20.21/32 any eq 23
Core-1(config-acl-ip)# permit ip 10.101.20.21/32 eq 23 any
Core-1(config-acl-ip)# exit
Core-1(config)# vlan 20
Core-1(config-if)# apply access-list example in
```

The ACL configuration defined on Core-1 is as follows:

If telnet was being used, which device connection would be permitted and functional in both directions? (Choose two.)

- A. Client 3 to Client 2
- B. Client 1 to Client 2
- C. Server 2 to Client 2
- D. Server 1 to Client 1
- E. Client 1 to Client 3

**Answer: BD**

#### Explanation:

CL3 - CL2 - drop on forward path by core1 cause match VLAN 20 and CL3 not CL1 as SRC IP CL1 - CL2 - pass - no ACL cause forwarded by Access2  
 SR2 - CL2 - pass on forward path by core1 cause match VLAN 10  
 Drop on return path by core1 cause match VLAN 20 and no CL1 as SRC IP SR1 - CL1 - pass on forward path by core1 cause match VLAN 10  
 pass on return path by core1 cause match VLAN 20 and CL1 as SRC IP  
 CL1 - CL3 - pass on forward path by core1 cause match VLAN 20 and CL1 as SRC IP drop on return path by core1 cause match VLAN 20 and not CL1 but CL3 as SRC IP

### NEW QUESTION 3

An administrator wants to leverage always-on PoE on AOS-CX switches. Which statement is correct regarding this feature?

- A. Provides up to 60W of power per port
- B. Supports all AOS-CX switches
- C. Provides surge protection for PoE and non-PoE ports
- D. Requires NetEdit to implement

**Answer: A**

### NEW QUESTION 4

What is correct regarding rate limiting and egress queue shaping on AOS-CX switches?

- A. Only a traffic rate and burst size can be defined for a queue

- B. Limits can be defined only for broadcast and multicast traffic
- C. Rate limiting and egress queue shaping can be used to restrict inbound traffic
- D. Rate limiting and egress queue shaping can be applied globally

**Answer:** A

**Explanation:**

you could apply egress queue shaping to the high priority queues to prevent starvation of low priority queues. Egress queue shaping allows you to apply a maximum bandwidth to a priority queue, as well as a burst size. The port buffers excess traffic up to the burst size and sends the buffered traffic at the max rate, smoothing out bursts while also preventing the high priority queue from exceeding its maximum rate and starving out lower priority queues.

**NEW QUESTION 5**

A company requires access by all users, guests, and employees to be authenticated. Employees will be authenticated using 802.1X, whereas guests will be authenticated using captive portal. Which type of authentication must be configured on an AOS-CX switch ports where both guests and employees connect?

- A. Both 802.1X and captive portal
- B. 802.1X only
- C. Both 802.1X and MAC-Auth
- D. 802.1X, captive portal, and MAC-Auth

**Answer:** C

**Explanation:**

Employees use 802.1x  
The Aruba guest solution uses MAC-auth.  
The Portal is not configured on the switch port.

**NEW QUESTION 6**

Which option correctly defines how to identify a VLAN as a voice VLAN on an AOS-CX switch?

- A. Switch(config)# port-access lldp-group <LLDP-group-name> Switch(config-lldp-group)# vlan <VLAN-ID>
- B. Switch(config)# port-access role <role-name> Switch(config-pa-role)# vlan access <VLAN-ID>
- C. Switch(config)# vlan <VLAN-ID> Switch(config-vlan-<VLAN-ID>)# voice
- D. Switch(config)# vlan <VLAN-ID> voice

**Answer:** C

**NEW QUESTION 7**

An administrator is looking for a data center switching solution that will greatly reduce the likelihood of dropped frames when uplink congestion is experienced. Which AOS-CX switch queuing feature meets the administrator's needs?

- A. FIFO
- B. VOQ
- C. WFQ
- D. DWWR

**Answer:** B

**NEW QUESTION 8**

What is a concept associated with PIM sparse mode (SM)?

- A. Reverts to forwarding when the pruning state times out.
- B. Requires periodic joins to maintain the shortest path tree (SPT).
- C. Recommended for use when high bandwidth connections exist.
- D. Implements a push content to forward traffic from the multicast source.

**Answer:** B

**Explanation:**

<https://www.youtube.com/watch?v=PhzMtUcS6UA>

**NEW QUESTION 9**

An administrator is implementing a downloadable user role solution involving AOS-CX switches. The AAA solution and the AOS-CX switches can successfully authenticate users; however, the role information fails to download to the switches. What policy should be added to an intermediate firewall to allow the downloadable role function to succeed?

- A. Allow TCP 443
- B. Allow UDP 1811
- C. Allow UDP 8211
- D. Allow TCP 22

**Answer:** A

**Explanation:**

pg 681 from the Aruba guide - "When using DUR, the ClearPass HPE-CPPM-Role VSA is used in combination with HTTPS to transfer the role to the switch." UDP

8211 (PAPI) is related to dynamic segmentation and the communication to the MC not DUR.

#### NEW QUESTION 10

An administrator is managing a pair of core AOS-CX switches configured for VSX. Connected to this core are pairs of aggregation layer AOS-CX switches configured for VSX. OSPF is running between the aggregation and core layers. To speed up OSPF convergence, the administrator has configured BFD between the core and aggregation switches.

What is a best practice the administrator should implement to reduce CPU processing on the switches if a BFD neighbor fails?

- A. Disable ICMP redirects
- B. Implement graceful restart
- C. Increase the BFD echo timers
- D. Increase the VSX keepalive timer

**Answer:** A

#### NEW QUESTION 10

An administrator wants to implement a virtual switching technology that implements a single control-plane solution. Which S-CX switches would meet these criteria?

- A. All AOS-CX switching platforms
- B. AOS-CX 6300 and 6400 switches
- C. AOS-CX 6300, 6400, and 83xx switches
- D. AOS-CX 6300 switches

**Answer:** C

#### NEW QUESTION 15

MAC authentication is enabled on port 1/1/27 of an AOS-CX switch. The following MAC addresses are defined on the AAA server:

\* 88:3a:30:97:b6:00

\* 00:50:56:b1:fc:9b

Examine the AOS-CX switch output:

```
Switch# show mac-address-table detail
MAC age-time           : 300 seconds
Number of MAC addresses : 10
```

MAC Address	VLAN	Type	Port	Age	Denied	never_ageout
20:4c:03:5f:98:02	1	dynamic	lag256	300	false	false
88:3a:30:97:b6:00	11	port-access-security	1/1/27	300	false	false
00:50:56:b1:fc:9b	11	port-access-security	1/1/27	300	true	false
02:02:00:00:12:00	11	dynamic	lag256	300	false	false
90:20:c2:bc:17:00	11	dynamic	lag256	300	false	false

Based on this information, what is true concerning port 1/1/27?

- A. Device-mode is enabled with a client limit of 1.
- B. Device-mode is enabled with a client limit of 2.
- C. Client-mode is enabled with a client limit of 1.
- D. Client-mode is enabled with a client limit of 2.

**Answer:** C

#### Explanation:

[https://www.arubanetworks.com/techdocs/AOS-CX/AOSCX-CLI-Bank/cli\\_6300-6400/Content/Chp\\_Port\\_acc/P](https://www.arubanetworks.com/techdocs/AOS-CX/AOSCX-CLI-Bank/cli_6300-6400/Content/Chp_Port_acc/P) client-mode = Selects client mode. In this mode, all clients connecting to the port are sent for authentication. device-mode = Selects device mode. In this mode, only the first client connecting to the port is sent for authentication. Once this client is authenticated, the port is considered as open and all subsequent clients trying to connect on that port are not sent for authentication.

#### NEW QUESTION 16

An administrator will be implementing tunneling between AOS-CX switches and Aruba gateways. Which list of protocols must minimally be allowed by an intermediate firewall between two sets of devices?

- A. IP protocol 50 and UDP 8209
- B. UDP 4500 and IP protocol 47
- C. UDP 8211 and IP protocol 47
- D. UDP 4500 and UDP 8209

**Answer:** C

#### Explanation:

ACSP Study Guide Page 788 - Allow the following protocols/ports

- PAPI: UDP 8211

- GRE: Protocol 47

#### NEW QUESTION 18

When cutting and pasting configurations into NetEdit, which character is used to enter commands within the context of the previous command?

- A. <ESC>
- B. ">"
- C. Space
- D. Tab

**Answer:** D

#### NEW QUESTION 21

The AOS-CX mobile app allows a network engineer or technician to perform which tasks? (Choose two.)

- A. Use NetEdit to manage switch configuration.
- B. Create a stack of AOS-CX switches.
- C. Transfer files between the switch and your mobile device.
- D. Securely access the switch using SSH.
- E. Schedule an operating system upgrade.

**Answer:** BC

#### Explanation:

ACSP Study Guide Page 66 - Key Features (Transfer files between the switch and your mobile device)

#### NEW QUESTION 24

An administrator is managing a network comprised of AOS-CX switches deployed at the aggregation layer. The switches are paired in a VSX stack and run the OSPF routing protocol. The administrator is concerned about how long it takes for OSPF to converge when one of the VSX switches has to reboot. What should the administrator do to speed up the OSPF convergence of the switch that is rebooting?

- A. Change the VSXISL link from an OSPF broadcast link point-to-point.
- B. Implement graceful restart on the VSX switches and their neighboring OSPF switches.
- C. Decrease the VSX initial synchronization timer on the two VSX switches.
- D. Define non-backbone areas on the VSX switches as totally stubby areas.

**Answer:** B

#### NEW QUESTION 27

Which protocol should be configured to allow NetEdit to discover third-party devices?

- A. SNMP
- B. SSH
- C. HTTPS
- D. HTTP

**Answer:** A

#### NEW QUESTION 32

When comparing PIM-DM and PIM-SM, which multicast components are only found with PIM-SM in multicast routing? (Choose two.)

- A. IGMP querier
- B. Rendezvous point
- C. Bootstrap router
- D. Shortest path tree
- E. Designated router

**Answer:** BD

#### NEW QUESTION 36

An administrator is configuring BGP and has two connections to a service provider to two different local routers.

Which BGP metric should the administrator configure to influence which local router the service provider will use to reach certain routes?

- A. Weight
- B. Multiple exit discriminator
- C. Local preference
- D. Origin

**Answer:** C

#### NEW QUESTION 39

An AOS-CX switch is configured to implement downloadable user roles. Examine the AOS-CX switch output:



```
Access1(config)# show aaa authentication port-access interface all client-status
```

Port Access Client Status Details

```
Client 00:50:56:b1:7a:37
```

```
=====
```

Session Details

```
-----
```

```
Port : 1/1/3
```

```
Session Time : 1887s
```

Authentication Details

```
-----
```

```
Status : mac-auth Authenticated
```

```
Auth Precedence : dot1x - Not attempted, mac-auth - Authenticated
```

Authorization Details

```
-----
```

```
Role :
```

```
Status : Not ready
```

Based on this output, what is the state of the user's access?

- A. No downloadable user role exists
- B. MAC authentication has passed, but 802.1X authentication is in progress
- C. The RADIUS request timed out to the AAA server
- D. The port should be configured for 802.1X

**Answer:** A

**Explanation:**

User role "Authenticated" was passed down but does not exist

#### NEW QUESTION 43

How is voice traffic prioritized correctly on AOS-CX switches?

- A. By defining device profiles with QOS settings
- B. By placing it in the strict priority queue
- C. By implementing voice VLANs
- D. By implementing weighted fair queueing (WFQ)

**Answer:** B

#### NEW QUESTION 48

A switch will apply a device profile to a port based on which pieces of information? (Select two.)

- A. IP header
- B. MAC address
- C. LLDP
- D. User role
- E. 802.1Q

**Answer:** AB

#### NEW QUESTION 53

A customer has twenty AOS-CX switches that will be managed by NetEdit and would like support for NetEdit these switches will exist in the network for at least five years.

Which type of licensing should be used by this customer?

- A. 20 Aruba NetEdit permanent licenses
- B. 20 Aruba NetEdit single node subscription licenses
- C. 25 Aruba NetEdit permanent licenses
- D. 1 Aruba NetEdit SMB License

**Answer:** B

#### NEW QUESTION 54

An administrator is concerned about the security of the control plane connection between an AOS-CX switch and an Aruba Mobility Controller (MC) when implementing user-based tunneling. How should the administrator protect this traffic?

- A. IPSec with a digital certificate
- B. GRE with a pre-shared key
- C. PAPI with an MD5 pre-shared key
- D. IPSec with a pre-shared key

**Answer:** C

#### NEW QUESTION 55

What would prevent two OSPF routers from forming an adjacency? (Select two.)

- A. Different priorities
- B. Different area types
- C. Different MTU sizes
- D. Different IP addresses
- E. Different router IDs

**Answer:** BC

#### NEW QUESTION 57

Examine the AOS-CX configuration:

```
interface mgmt
  no shutdown
  ip static 10.1.1.1/24
  default-gateway 10.1.1.254
  exit
ssh server vrf mgmt
https-server vrf mgmt
https-server rest access-mode read-write
```

The switches have a default factory password setting NetEdit fails to access the configuration of the AOS-CX switches. What should the administrator do to solve this problem?

- A. Set a password for the default admin user account.
- B. Disable telnet globally.
- C. Use the default VRF instead of the mgmt VRF
- D. Enable IP routing globally

**Answer:** D

#### NEW QUESTION 58

A network administrator is implementing NAE on AOS-CX switches. When attempting to create an agent on a particular switch, the agent appears in the NAE Agents panel with a red triangle error symbol and a status of “Unknown”. What is the cause of this issue?

- A. The administrator does not have the appropriate credentials to interact with NAE
- B. The number of scripts or agents has exceeded the hardware’s capabilities
- C. A connectivity issue exists between NAE and the AOS-CX switch
- D. The RESTful API has not been enabled on the AOS-CX switch

**Answer:** B

#### Explanation:

[https://www.arubanetworks.com/techdocs/AOS-CX/10.06/HTML/5200-7717/Content/Chp\\_TS/err-nae-age-not](https://www.arubanetworks.com/techdocs/AOS-CX/10.06/HTML/5200-7717/Content/Chp_TS/err-nae-age-not)

#### NEW QUESTION 60

A company has a third-party AAA server solution. The campus access layer was just upgraded to AOS-CX switches that perform access control with MAC-Auth and 802.1X. The company has an Aruba Mobility Controller (MC) solution for wireless, and they want to leverage the firewall policies on the controllers for the wired traffic.

What is correct about how the company should implement a security solution where the wired traffic is processed by the gateways?

- A. Implement downloadable user roles with a gateway role defined on the AOS-CX switches
- B. Implement local user roles with a gateway role defined on the AOS-CX switches
- C. Implement standards-based RADIUS VSAs to pass policy information directly to the AOS-CX switches and MCs
- D. Implement downloadable user roles with a device role defined on the AOS-CX switches and MCs

**Answer:** B

#### NEW QUESTION 63

An administrator will be replacing a campus switching infrastructure with AOS-CX switches that support VSX capabilities. The campus involves a core, as well as multiple access layers. Which feature should the administrator implement to allow both VSX-capable core switches to process traffic sent to the default gateway in the campus VLANs?

- A. VRF
- B. VRRP
- C. IP helper
- D. Active gateway

**Answer:** D

#### Explanation:

Active gateway = both devices route/forward traffic VRRP = Active-standby, only active member routes/forwards traffic

Understand the Active Gateway principle In a VSX system, active gateway provides redundant default gateway functionality for the end-hosts. The default gateway of the end-host is automatically handled by both the VSX systems.

#### NEW QUESTION 68

In AOS-CX switching, what determines when a frame is forwarded by the switch between the ingress and the egress port?

- A. Egress port
- B. Ingress port
- C. VSX switch tables
- D. Fabric Load Balancer

**Answer:** B

#### NEW QUESTION 71

What is correct regarding the tunneling of user traffic between AOS-CX switches and Aruba Mobility Controllers (MCs)?

- A. Uses IPSec to protect the management and data traffic
- B. Uses IPSec to protect the management traffic
- C. Supports only port-based tunneling
- D. Uses the same management protocol as Aruba APs

**Answer:** D

#### Explanation:

because both AP and Switch use PAPI . Moreover in AOS-CX switch currently not support port based tunnel. AOS-CX switch only support User Based Tunnel (UBT)

#### NEW QUESTION 76

An administrator in a company of 349 users has a pair of AOS-CX switches with connections to external networks. Both switches are configured for OSPF. The administrator wants to import external routes on both switches, but assigns different seed metrics to the routes, as well as imports them as external type-1 routes. What is the best way for the administrator to accomplish this?

- A. Create a route map with the correct route type and metrics
- B. Define the route type and metrics in the OSPF process
- C. Create a classifier policy with the correct route type and metrics
- D. Define a class and policy map with the correct route type and metrics

**Answer:** A

#### NEW QUESTION 77

A network administrator is attempting to troubleshoot a connectivity issue between a group of users and a particular server. The administrator needs to examine the packets over a period of time from their desktop; however, the administrator is not directly connected to the AOS-CX switch involved with the traffic flow. What is correct regarding the ERSPAN session that needs to be established on an AOS-CX switch? (Choose two.)

- A. On the source AOS-CX switch, the destination specified is the switch to which the administrator's desktop is connected
- B. On the source AOS-CX switch, the destination specified is the administrator's desktop
- C. The encapsulation protocol used is GRE
- D. The encapsulation protocol used is VXLAN
- E. The encapsulation protocol is UDP

**Answer:** AC

#### Explanation:

In AOS CX the remote mirroring is done using a tunnel interface, so the Mirror source and destination must be configured on each Switch. On the source Switch, the source interface (from where the traffic is mirrored) and destination interface (the tunnel interface to where the traffic is sent to). In the destination Switch, the source interface (which would be the tunnel interface (receiving the traffic from the source switch tunnel)) and the destination would be the client where Wireshark enabled client is connected.

#### NEW QUESTION 82

When implementing deficit weighted round robin queuing, what importance does the weight value have?

- A. Prioritizing latency-sensitive traffic
- B. Queue priority in processing traffic
- C. Strict priority queue
- D. Percentage of interface bandwidth

**Answer:** B

#### NEW QUESTION 86

Examine the partial output of the BGP routing table of an AOS-CX switch:



Switch# show bgp

<-output omitted->

Network	Nexthop	Metric	LocPrf	Weight	Path
* e 1.0.0.0/8	192.168.1.5	0	100	0	100 ?
* e 1.0.0.0/8	192.168.2.5	0	100	0	200 100 i
* e 1.0.0.0/8	192.168.3.5	0	200	20	300 400 100 ?
* e 1.0.0.0/8	192.168.4.5	0	50	0	400 200 100 i

The switch is learning about four possible path to reach the 1.0.0.0/8 network. Based on this output, which next-hop route will the AOS-CX select to be placed in the IP routing table?

- A. 192.168.1.5
- B. 192.168.2.5
- C. 192.168.3.5
- D. 192 1684 5

**Answer:** C

#### NEW QUESTION 91

An administrator wants to use an existing Aruba gateway's firewall policies to filter both wireless and wired traffic. Which AOS-CX switch feature should a customer implement to ensure the gateway applies the same or similar firewall policies to users' wired and wireless traffic?

- A. GRE tunneling
- B. User-based tunneling
- C. Port-based tunneling
- D. IPSec tunneling

**Answer:** A

#### NEW QUESTION 96

An administrator wants to track what configuration changes were made on a switch. What should the administrator implement to see the configuration changes on an AOS-CX switch?

- A. AAA authorization
- B. Network Analysis Engine (NAE)
- C. AAA authentication
- D. VSX synchronization logging

**Answer:** B

#### NEW QUESTION 97

A network administrator is tasked to set up BGP in the company's network. The administrator is defining an eBGP peering between an AOS-CX switch and a directly-connected service provider. The administrator has configured the following on the AOS-CX switch:

```
switch(config)# interface loopback 0
switch(config-loopback-if)# ip address 10.1.1.1/32
switch(config-loopback-if)# exit
switch(config)# interface 1/1/1
switch(config-if)# no shutdown
switch(config-if)# routing
switch(config-if)# ip address 192.168.1.2/30
switch(config-if)# exit
switch(config)# router bgp 64500
switch(config-bgp)# neighbor 192.168.1.1 remote-as 64511
switch(config-bgp)# bgp router-id 192.168.1.2
switch(config-bgp)# address-family ipv4 unicast
switch(config-bgp-ipv4-uc)# exit
```

However, when using the "show bgp all summary" command, the state does not display "Established" for the eBGP peer. What must the administrator configure to fix this issue?

- A. router bgp 64500 neighbor 192.168.1.1 ebgp-multihop
- B. router bgp 64500 enable
- C. router bgp 64500 address-family ipv4 unicast neighbor 192.168.1.1 activate
- D. router bgp 64500 neighbor 192.168.1.1 update-source loopback0

**Answer:** C

#### NEW QUESTION 102

An administrator is designing an access layer solution in a data center. A key requirement is to dual-home mission-critical server connections to two different switches, ensuring that the servers always have network access, even during switch software upgrades. This feature should support strictly-controlled provisioning. What would best meet the administrator's needs when deploying AOS-CX switches?

- A. VSF
- B. Dynamic segmentation
- C. VSX
- D. NAE

**Answer:** C

#### NEW QUESTION 107

A company is implementing a new wireless design and needs it to support high availability, even during times of switch system upgrades. The solution will involve Aruba Mobility Controller (MC) and Aruba AP connections requiring POE. Which campus AOS-CX switch solution and virtual switching should the company implement at the campus access layer?

- A. AOS-CX 6400 and VSX
- B. AOS-CX 6300 and VSF
- C. AOS-CX 8325 and VSF
- D. AOS-CX 8400 and VSX

**Answer:** A

#### Explanation:

only 6400 support highly available during upgrades

#### NEW QUESTION 108

A network has an ABR that connects area 0 and 1. A network engineer configures a summarized route for area 1. The ABR is a designated router (DR) for the segment it uses to connect to area 1.

Which LSA type is assigned to this route when the summarized route is advertised into area 1 by the ABR?

- A. LSA1
- B. LSA4
- C. LSA3
- D. LSA2

**Answer:** B

#### NEW QUESTION 109

The company has just upgraded their access layer switches with AOS-CX switches and implemented an AAA solution with ClearPass. The company has become concerned about what actually connects to the user ports on the access layer switch. Therefore, the company is implementing 802.1X authentication on the AOS-CX switches. An administrator has globally enabled 802.1X, and has enabled it on all the access ports connected to user devices, including VoIP phones, security cameras, and wireless Aruba IAPs. Wireless users are complaining that they successfully authenticate to the IAPs; however, they do not have access to network resources. Previously, this worked before 802.1X was implemented on the AOS-CX switches.

What should the company do to solve this problem?

- A. Implement device-based mode on the IAP-connected AOS-CX switch ports.
- B. Implement local user roles and local forwarding on the AOS-CX switches.
- C. Implement downloadable user roles and user-based tunneling (UBT) on the AOS-CX switches.
- D. Implement AAA RADIUS change of authorization on the AOS-CX switches.

**Answer:** C

#### NEW QUESTION 114

What is true regarding VSX and keepalives on AOS-CX switches?

- A. A separate VLAN on the ISL link is used.
- B. A VSX LAG for the keepalives is a best practice.
- C. The OOBM port must be used.
- D. A 1GbE or faster port is used.

**Answer:** D

#### NEW QUESTION 116

A network administrator is implementing OSPF, where there are two exit points. Each exit point has a stateful, application inspection firewall to implement company policies.

What would the best practice be to ensure that one firewall will see both directions of the traffic, preventing asynchronous connections in the network?

- A. Both ASBRs should define External Type 1 routes for the
- B. Both ASBRs should define External Type 1 routes for the
- C. Both ASBRs should define External Type 2 routes for the
- D. Both ASBRs should define External Type 2 routes for the

**Answer:** A

#### NEW QUESTION 117

A network administrator is installing NetEdit. In order for NetEdit to manage the AOS-CX switches in the network, what must be defined on the AOS-CX switches? (Choose two.)

- A. Enabling telnet
- B. Defining an admin user password
- C. Defining the https user-group
- D. Enabling the RESTful API for read and write access
- E. Enabling SFTP

**Answer:** BD

#### NEW QUESTION 121

An administrator is implementing a multicast solution in a multi-VLAN network. Which statement is true about the configuration of the switches in the network?

- A. IGMP snooping must be enabled on all interfaces on a switch to intelligently forward traffic
- B. IGMP requires join and leave messages to graft and prune multicast streams between switches
- C. IGMP must be enabled on all routed interfaces where multicast traffic will traverse
- D. IGMP must be enabled on all interfaces where multicast sources and receivers are connected

**Answer:** C

#### NEW QUESTION 126

An administrator wants to leverage the Network Analysis Engine (NAE) feature on AOS-CX switches to perform root cause analysis and to assist in quickly identifying problems. Which two AOS-CX databases does the administrator have access to when implementing scripts? (Select two.)

- A. Time-series
- B. API
- C. VSX
- D. Configuration
- E. Audit

**Answer:** AC

#### NEW QUESTION 131

How is NetEdit installed at a customer location?

- A. Via an Aruba NetEdit hardware appliance
- B. Via a DVD using a virtualized platform like Microsoft's Hyper-V
- C. Via the Aruba Central cloud solution
- D. Via an OVA file and a virtualized platform like VMware's ESXi

**Answer:** D

#### NEW QUESTION 135

An administrator of a company has concerns about upgrading the access layer switches. The users rely heavily on wireless and VoIP telephony. Which is the best recommendation to ensure a short downtime for the users during upgrading the access layer switches?

- A. Install the in-service software upgrade (ISSU) feature with clustering enabled
- B. Install AOS-CX 6300 or 6400 switches with always-on POE
- C. Implement VSF on the AOS-CX access switches
- D. Implement VSX on the AOS-CX access switches

**Answer:** B

#### Explanation:

The key is to reduce the impact. VSF or not will have same impact when the switch reboots. But if the switch support always on poe then at least the POE clients will be ready before the switch finish booting up. If you dont have always on POE, then the poe clients will reboot AFTER the switch boots up.

#### NEW QUESTION 136

The network is configured for OSPF with the following attributes: Core1 and Core2 and ABRs

Area 1 has 20 networks in the 10.1.0.0/16 range Area 0 has 10 networks in the 10.0.0.0/16 range Area 2 has 50 networks in the 10.2.0.0/16 range The ASBR is importing a static route into Area 1

Core2 has a summary for Area 2: area 0.0.0.2 range 10.2.0.0/16 type inter-area Here is the OSPF configuration performed on Core1:

```
Core1(config)# router ospf 1
Core1(config-router)# router-id 10.0.0.1
Core1(config-router)# passive-interface default
Core1(config-router)# area 0.0.0.0
Core1(config-router)# area 0.0.0.1 stub
Core1(config-router)# area 0.0.0.1 range 10.1.0.0/16 type inter-area
Core1(config-router)# area 0.0.0.2
Core1(config-router)# area 0.0.0.0 range 10.0.0.0/16 type inter-area
Core1(config-router)# exit
Core1(config)# interface vlan 10
Core1(config-if)# ip address 10.0.1.1/24
Core1(config-if)# ip ospf 1 area 0
Core1(config-if)# exit
Core1(config)# interface vlan 100
Core1(config-if)# ip address 10.1.1.1/24
Core1(config-if)# ip ospf 1 area 1
Core1(config-if)# exit
```

Based on the above information, what is correct?

- A. Area 0 has 13 routes
- B. Core1 has no OSPF routes
- C. Core1 has received one LSA Type 5 from the ASBR
- D. Area 1 has 23 routes

**Answer:** D

#### NEW QUESTION 138

An administrator has configured the following on an AOS-CX switch:

```
object-group ip address web-servers
 10.1.12.2
 10.1.12.3
exit
object-group port web-ports
eq 80
eq 443
```

What is the correct ACL rule configuration that would allow traffic from anywhere to reach the web ports on the two specified servers?

- A. access-list ip server 10 permit tcp any web-servers group web-ports
- B. access-list ip server 10 permit tcp any object-group web-servers object-group web-ports
- C. access-list ip server 10 permit tcp any group web-servers group web-ports
- D. access-list ip server 10 permit tcp any web-servers web-ports

**Answer:** A

#### Explanation:

```
Switch1(config-acl-ip)# show run cur access-list ip server
10 permit tcp any web-servers group web-ports
```

#### NEW QUESTION 140

When implementing user-based tunneling on an AOS-CX switch, which component defines the primary and backup Aruba gateways?

- A. Transit VLAN
- B. Gateway role
- C. Server group
- D. Zone

**Answer:** D

#### NEW QUESTION 141

Which AOS-CX feature is used to prevent head-on-line (HOL) blocking?

- A. VSF
- B. WFQ
- C. VOQ
- D. VSX



**Answer:** C

#### NEW QUESTION 144

A company uses NetEdit to manage a network of 700 AOS-CX switches and approximately 1,000 other SNMP-capable devices.

Which management solution should the company use to monitor all the devices, as well as see a topology picture of how all the devices are connected together?

- A. NetEdit
- B. Aruba AirWave
- C. Aruba Activate
- D. Network Analysis Engine (NAE)

**Answer:** A

#### NEW QUESTION 145

Which protocols are used by NetEdit to interact with third-party devices? (Choose two.)

- A. telnet
- B. SNMP
- C. SSH
- D. Restful API
- E. CDP

**Answer:** BC

#### NEW QUESTION 147

A company has just purchased AOS-CX switches. The company has a free and open-source AAA solution. The company wants to implement access control on the Ethernet ports of the AOS-CX switches.

Which security features can the company implement given the equipment that they are using?

- A. Port-based tunneling
- B. Device fingerprinting
- C. Local user roles
- D. Downloadable user roles

**Answer:** C

#### NEW QUESTION 148

What is correct regarding rate limiting and egress queue shaping on AOS-CX switches?

- A. Rate limiting and egress queue shaping can be used to restrict inbound traffic
- B. Limits can be defined only for broadcast and multicast traffic
- C. Rate limiting and egress queue shaping can be applied globally
- D. Traffic rate limit is configured on queue level

**Answer:** D

#### NEW QUESTION 152

Examine the following ACL rule policies:

Permit traffic from 10.2.2.1 through 10.2.2.30 to anywhere Permit traffic from 10.2.2.40 through 10.2.2.55 to anywhere Deny all others

Based on this policy, place the following ACL rule statements in the correct order to accomplish the above filtering policy.

- A. deny ip 10.2.2.31 255.255.255.255 anypermit ip 10.2.2.40 255.255.255.248 anypermit ip 10.2.2.48 255.255.255.248 anydeny ip 10.2.2.32 255.255.255.224 anypermit ip 10.2.2.0 255.255.255.192 any
- B. permit ip 10.2.2.40 255.255.255.248 anypermit ip 10.2.2.48 255.255.255.248 anypermit ip 10.2.2.0 255.255.255.192 anydeny ip 10.2.2.31 255.255.255.255 anydeny ip 10.2.2.32 255.255.255.224 any
- C. deny ip 10.2.2.31 255.255.255.255 anydeny ip 10.2.2.32 255.255.255.224 anypermit ip 10.2.2.40 255.255.255.248 anypermit ip 10.2.2.48 255.255.255.248 anypermit ip 10.2.2.0 255.255.255.192 any
- D. deny ip 10.2.2.31 255.255.255.255 anypermit ip 10.2.2.40 255.255.255.248 anydeny ip 10.2.2.32 255.255.255.224 anypermit ip 10.2.2.48 255.255.255.248 anypermit ip 10.2.2.0 255.255.255.192 any

**Answer:** A

#### NEW QUESTION 154

What is the correct way of associating a VRF instance to either a VLAN or an interface?

- A. Switch(config)# interface <interface-ID>Switch(config-if)# vlan access <VLAN-ID> vrf attach <vrf-name>
- B. Switch(config)# vlan <VLAN-ID> vrf attach < vrf-name >
- C. Switch(config)# vlan <VLAN-ID>Switch(config-vlan-<VLAN-ID># vrf attach < vrf-name >
- D. Switch(config)# vlan <VLAN-ID> vrf < vrf-name >

**Answer:** C

#### NEW QUESTION 158

A network administrator wants to replace older access layer switches with AOS-CX 6300 switches. Which virtual switching technology can the administrator implement with this solution?

- A. Both VSF and VSX
- B. Only Backplane stacking
- C. Only VSF
- D. Only VSX

**Answer:** C

#### NEW QUESTION 162

.....

## THANKS FOR TRYING THE DEMO OF OUR PRODUCT

Visit Our Site to Purchase the Full Set of Actual HPE6-A73 Exam Questions With Answers.

We Also Provide Practice Exam Software That Simulates Real Exam Environment And Has Many Self-Assessment Features. Order the HPE6-A73 Product From:

<https://www.2passeasy.com/dumps/HPE6-A73/>

## Money Back Guarantee

### HPE6-A73 Practice Exam Features:

- \* HPE6-A73 Questions and Answers Updated Frequently
- \* HPE6-A73 Practice Questions Verified by Expert Senior Certified Staff
- \* HPE6-A73 Most Realistic Questions that Guarantee you a Pass on Your FirstTry
- \* HPE6-A73 Practice Test Questions in Multiple Choice Formats and Updatesfor 1 Year