

Microsoft

Exam Questions PL-600

Microsoft Power Platform Solution Architect



NEW QUESTION 1

A large company experiences high staff turnover rates. As a result, the company must add or remove multiple system user accounts daily. You need to recommend a security concept which will facilitate complex security profiles to entities for large groups of users across the Power Apps and Dynamics 365 applications. What should you recommend?

- A. Hierarchy security
- B. Field-level security
- C. User access management
- D. Team privileges

Answer: D

Explanation:

User and team management is the area of Microsoft Dataverse where you can create and maintain user accounts and profiles. A user is any person who works for a business unit who uses Dataverse. Each user has a user account.

A team is a group of users. Teams let users across an organization collaborate and share information.

Note: Why use Dataverse?

▪ Easy to secure – Data is securely stored so that users can see it only if you grant them access. Role-based security allows you to control access to tables for different users within your organization. Data from your Dynamics 365 applications is also stored within Dataverse, allowing you to quickly build apps that use your Dynamics 365 data and extend your apps with Power Apps.

Reference:

<https://docs.microsoft.com/en-us/powerapps/developer/data-platform/user-team-entities>

<https://docs.microsoft.com/en-us/powerapps/maker/data-platform/data-platform-intro>

NEW QUESTION 2

DRAG DROP

You need to recommend methods for assigning security to each group of users. The customer provides the following requirements:

Customers need the ability to submit a case through an online portal. Portal must handle 75 concurrent users submitting cases.

Service data must be retained for at least six years.

You need to determine which requirements are functional or non-functional.

Which requirements are functional or non-functional? To answer, drag the appropriate types to the correct requirements. Each type may be used once, more than once, or not at all. You may need to drag the split bar between panes or scroll to view content.

NOTE: Each correct selection is worth one point.

Select and Place:

Answer Area

Types	Requirement	Type
<div>Functional</div>	Customers need the ability to submit a case through an online portal.	<div></div>
<div>Non-functional</div>	Portal must handle 75 current users submitting cases.	<div></div>
	Service data must be retained for at least six years.	<div></div>

- A. Mastered
- B. Not Mastered

Answer: A

Explanation:

Box 1: Functional

Functional requirements describe what the solution needs to do or its behaviors.

Box 2: Non-functional

Non-functional requirements commonly describe non-behavior aspects of the solution such as performance requirements.

Box 3: Non-functional

Examples of common non-functional requirement types include: Availability

Compliance/regulatory Data retention/residency

Performance (response time, and so on) Privacy

Recovery time Security Scalability

Reference: <https://docs.microsoft.com/en-us/learn/modules/work-with-requirements/3-functional-requirements> <https://docs.microsoft.com/en-us/learn/modules/work-with-requirements/4-non-functional-requirements>

NEW QUESTION 3

You are a Power Platform consultant for an internet support company.

The company lacks a budget to buy third-party ISVs or add-ons. The company requires a new system that achieves the following:

All support issues must come in by email, need to be logged, and assigned to the support group.

Accounts must synchronize with the parent company Oracle database.

Reports must be sent to the executives on a weekly basis.

No custom code will be used in the system.

You need to recommend the components that should be configured.

Which two components should you recommend? Each correct answer presents part of the solution.

NOTE: Each correct selection is worth one point.

- A. Power Virtual Agents
- B. Microsoft Dataverse
- C. server-side synchronization
- D. Microsoft Customer Voice

Answer: BD

Explanation:

The Dynamics 365 Customer Voice data is stored in Microsoft Dataverse.

Dynamics 365 Customer Voice is an enterprise feedback management application you can use to easily keep track of the customer metrics that matter the most to your business. ... It provides a personalized experience, enabling you to collect customer feedback and get relevant insights quickly and easily, all in a few clicks.

Incorrect Answers:

A: Power Virtual Agents lets you create powerful chatbots that can answer questions posed by your customers, other employees, or visitors to your website or service.

Reference: <https://docs.microsoft.com/en-us/dynamics365/customer-voice/about> <https://docs.microsoft.com/en-us/dynamics365/customer-voice/data-flow>

NEW QUESTION 4

A company has a custom web-based solution that is hosted on Azure. You design a Power Platform solution to provide the company additional capabilities. You need to integrate the Power Platform solution with the web-based solution.

What should you recommend?

- A. Connection reference
- B. Custom connector
- C. Desktop flow
- D. Data gateway

Answer: B

Explanation:

A custom connector in Power Platform is a wrapper around a REST API that allows Power Automate or Power Apps to communicate with that REST API.

Connectors created in Power Automate are available in Power Apps. Likewise, connectors created in Power Apps are available in Power Automate.

Reference:

<https://docs.microsoft.com/en-us/learn/modules/create-custom-connector-power-platform/1-introduction>

NEW QUESTION 5

DRAG DROP

You need to recommend the appropriate messaging channel solutions for the organization.

What should you recommend? To answer, drag the appropriate messaging options to the correct user types. Each messaging option may be used once, more than once, or not at all. You may need to drag the split bar between panes or scroll to view content.

NOTE: Each correct selection is worth one point.

[MISSING]

- A. Mastered
- B. Not Mastered

Answer: A

Explanation:

Box 1: Omnichannel for Customer Service dashboard

Scenario: Workers must be able to communicate in near real-time with worker support agents.

The company has a team of worker support agents that respond to inquiries from current and prospective workers. Some of the worker support agents are multilingual.

If you choose to expand your customer service offering to provide chat and channels, the Customer Service workspace seamlessly adjusts to support managing conversations as well.

Note: As an agent with the Customer Service Representative security role, when you open Customer Service workspace, you start on the Customer Service Agent Dashboard unless your administrator has changed the default view. This dashboard shows you your active cases, cases you can work in queues you are assigned to, and your open activities. You can open existing cases and activities or begin working new cases from the queues you are assigned to and create activities.

Box 2: Dynamics 365 Customer Service

Scenario: First Up uses an on-premises system to manage current and historical patient data including medications and medical visits. Reference:

<https://docs.microsoft.com/en-us/dynamics365/customer-service/csw-overview>

NEW QUESTION 6

You need to recommend a reporting solution for the organization.

Which two options should you recommend? Each correct answer presents a complete solution.

NOTE: Each correct selection is worth one point.

- A. AI Builder
- B. SQL Server Reporting Services (SSRS)
- C. Dynamics 365
- D. Power BI

Answer: BC

Explanation:

The reporting and analytics team must be able to create reports that include data from all facilities and all workers.

Management reports must present an overview of the entire organization. Other reports may be limited to specific offices.

B: Power Apps apps can include reports that provide useful business information to the user. These reports are based on SQL Server Reporting Services and provide the same set of features that are available for typical SQL Server Reporting Services reports.

C: Microsoft Dynamics 365 online and Model-Driven PowerApps offers several advanced reporting options. Advanced reports are often necessary when business requirements demand complex calculations, returning multiple data sets, grouping large sets of data based on rules, and retrieving data from different data sources.

Incorrect Answers:

D: Scenario: Users cannot view Power BI reports within the Power Platform apps.

Note: Power BI enables data insights and better decision-making, while Power Apps enables everyone to build and use apps that connect to business data. Using the Power Apps visual, you can pass context-aware data to a canvas app, which updates in real time as you make changes to your report.

Reference: <https://docs.microsoft.com/en-us/powerapps/maker/model-driven-apps/add-reporting-to-app> <https://powerusers.microsoft.com/t5/Building-Power-Apps/Creating-SSRS-Report-for-Model-Driven-PowerApps/td-p/621866> <https://docs.microsoft.com/en-us/powerapps/maker/canvas-apps/powerapps-custom-visual>

NEW QUESTION 7

You need to recommend a solution for agents when working with customers to make reservations.

What should you recommend?

- A. task flows
- B. Business Process Flows
- C. workflows
- D. Power Automate

Answer: B

Explanation:

Business process flows provide a guide for people to get work done. They provide a streamlined user experience that leads people through the processes their organization has defined for interactions that need to be advanced to a conclusion of some kind.

Use business process flows to define a set of steps for people to follow to take them to a desired outcome.

With business processes flows available as an entity, you can now use advanced finds, views, charts, and dashboards sourced from business process flow data for a given entity, such as a lead or opportunity. Scenario:

Agents need a solution to replace paper reservation checklists.

Agents need dashboards to show a current count of all reservations on the entity. Agents need a way to track reservation issues.

Agents need a visual indicator in the interface to determine the reservation step to provide a seamless customer experience.

Testlet 4

Case study

This is a case study. Case studies are not timed separately. You can use as much exam time as you would like to complete each case. However, there may be additional case studies and sections on this exam. You must manage your time to ensure that you are able to complete all questions included on this exam in the time provided.

To answer the questions included in a case study, you will need to reference information that is provided in the case study. Case studies might contain exhibits and other resources that provide more information about the scenario that is described in the case study. Each question is independent of the other questions in this case study.

At the end of this case study, a review screen will appear. This screen allows you to review your answers and to make changes before you move to the next section of the exam. After you begin a new section, you cannot return to this section.

To start the case study

To display the first question in this case study, click the Next button. Use the buttons in the left pane to explore the content of the case study before you answer the questions. Clicking these buttons displays information such as business requirements, existing environment, and problem statements. If the case study has an All Information tab, note that the information displayed is identical to the information displayed on the subsequent tabs. When you are ready to answer a question, click the Question button to return to the question.

Background

Fabrikam, Inc. manufactures industrial metal cutting machines. The company installs and services the machines for customers.

Fabrikam has manufacturing plants in Canada, France, and China. The company also has regional service organizations that are responsible for installation and maintenance of the machines.

Current environment Overview

Operations for the company are managed very informally. Only a small number of long-term employees are aware of all manufacturing processes. The company has been experiencing quality issues associated with its manufacturing operations and installations.

The company wants to implement a way to capture quality inspection results for each machine produced. Current inspection checklists are stored in the Files section of a Teams channel for inspectors. Inspectors commonly print the incorrect inspection checklist.

The company has specific inspection stations for certain inspection steps. Each station has the gauges and equipment required for related inspection steps. There is often a backlog at specific inspection stations. This results in delays in shipping machines to customers.

Accounting system

The current system does not handle shop floor or manufacturing planning functionality. Machines are assigned serial numbers and placed in stock until they are shipped to customers.

Employee information is maintained only within the accounting system. Access to the information is strictly controlled due to privacy regulations and company policies.

Other systems

The company has an enterprise Microsoft 365 subscription. The company uses Microsoft 365 only for sending and receiving email. The company uses photos of employees to generate employee badges. Photos are uploaded into Microsoft 365 user profiles.

The company recently started using Dynamics 365 Field Service to manage and maintain the machines that it installs for its customers. The app has not been customized.

The company has added roles, skills, and certification proficiencies to Dynamics 365 Field Service resources to support both customer onsite inspections and final manufacturing inspections.

Requirements

Quality inspection app

Fabrikam is evaluating Microsoft Power Platform to determine whether it can meet the company's requirements for a manufacturing defect and quality inspection solution. Each machine produced must be subjected to a quality inspection at various points during production. Each machine must undergo a more extensive quality inspection before the machine can be shipped to the customer. Inspection orders

Inspection orders must:

- Allow entry of quality ratings of passed or failed for each quality metric identified for the machine being rated.

- Include information about the person who performed each inspection step and any comments made by the inspector.- Be automatically marked as failed if one inspection step rating is marked as failed.

- Be automatically marked for re-inspection should a machine fail inspection. The new inspection order must be created by using the originating inspection order as a template. Inspectors must fill in findings comments and upload at least one photo for any inspection step that is marked as failed.

Inspection standardization

Standardized checklists must be stored in the solution for use by inspectors. A copy must be created when a new inspection is initiated. The solution must: Prevent an inspector from proceeding to the next step of the checklist until required information for a step is entered. Support the addition of steps to inspections to support custom features added to a machine for a customer. Support the direct input of measurements from testing gauges to avoid incorrect readings being entered by inspectors. Provide a visual representation of the testing measurement limits for each step. Include an indication of how the measured value compares to measurement limits and whether the measurement is within tolerance. Users must be able to configure the visualizations to display the minimum value and maximum value, and whether the reading is within the tolerance of a single targeted value. It must also be able to be used for maintenance inspections once the machine has been installed. Support the ability to store photo references within each inspection step to document defects found during inspections. Security Users must be active employees of Fabrikam. When a user signs into the inspection solution, the solution must display a picture of the employee who has signed in. Supervisors must be able to modify standard checklists. Other employees must be prevented from modifying checklists. You must prevent users from changing inspection order data once an inspection is marked as final. Analytics and reporting The solution must: . Provide metrics including existing and upcoming demand by inspection station, average time spent per user at a station, and average time a machine spends at each inspection point. Provide metrics per inspector including number of inspections performed by month, and number of inspections per rating type (pass, fail). Provide a printed quality certificate to be included with each machine. Issues During initial testing of the solution, testers report that they cannot see the photos taken during a previously failed inspection.

NEW QUESTION 8

HOTSPOT

A company uses Dynamics 365 Sales and Power BI.

Sales managers must be able to keep track of changes to their pipeline in the following ways: Notify the sales managers when an Opportunity changes sales stage.

Notify the sales managers when the pipeline drops below 2.5M USD.

When reviewing the pipeline in Power BI, a sales executive must be able to add a Playbook to an Opportunity. You need to recommend a solution that meets the company requirements.

Which combination of solutions should you recommend? To answer, select the appropriate option in the answer area.

NOTE: Each correct selection is worth one point.

Hot Area:

Answer Area

Notify the sales manager when an Opportunity changes sales stage.	<div>▼</div> <div>Microsoft Power Automate, Microsoft Dataverse connector, and Microsoft Office 365 Outlook connector</div> <div>Microsoft Power Automate, Microsoft Dataverse connector, and Microsoft Office 365 users</div> <div>Microsoft Power Automate, data alerts, and Microsoft Office 365 connector</div>
Notify the sales managers when the pipeline drops below 2.5 USD.	<div>▼</div> <div>Microsoft Power Automate, Microsoft Dataverse connector, and Microsoft Office 365 Outlook connector</div> <div>Microsoft Power Automate, Power BI data alerts, and Microsoft Office 365 connector</div> <div>Microsoft Power Automate, Power BI, Power Apps, and Microsoft Dataverse connector</div>
When reviewing the pipeline in Power BI, a sales executive must be able to add a Playbook to an Opportunity.	<div>▼</div> <div>Power BI, Power Apps, Microsoft Dataverse connector, and Microsoft Office 365 Outlook connector</div> <div>Microsoft Power Automate, Data alerts, Microsoft Dataverse connector, and Microsoft Office 365 users</div> <div>Microsoft Power Automate, Data alerts, and Microsoft Office 365 connector</div> <div>Microsoft Power Automate, Power BI, Power Apps, and Microsoft Dataverse connector</div>

- A. Mastered
 B. Not Mastered

Answer: A

Explanation:

Box 1: Microsoft Power Automate, Microsoft Dataverse connector, and Microsoft 365 Outlook connector Use Microsoft Dataverse as the data source.

While Power Automate is a robust tool with ever-expanding capabilities, it also handles simple tasks with grace. A universal business need for many organizations is the ability to automate email notifications based on certain criteria: an opportunity is won, send an email to the sales manager; a case is closed, send an email to the customer; a work order is completed, send an email to the customer. Power Automate can easily accommodate this using the Microsoft 365 Outlook connector.

Box 2: Microsoft Power Automate, Power Bi data alerts, and Microsoft 365 connector

Data alerts in the Power BI service: Set alerts to notify you when data in your dashboards changes beyond limits you set.

Box 3: Microsoft Power Automate, Power BI, Power Apps, and Microsoft Dataverse connector

Reference:

<https://www.velosio.com/blog/2021/01/27/tracking-emails-the-right-way-with-power-automate/>

<https://docs.microsoft.com/en-us/power-bi/create-reports/service-set-data-alerts>

NEW QUESTION 9

A company sells antique books. The company stores data about book locations in an existing system by using the following database fields: Room, Shelf.

The company must import the data from the existing system into a Power Platform solution. Existing data into must be modified to match the design of the new solution. You need to recommend a solution to combine the room and shelf fields into a single column during the import process.

Which tool should you recommend?

- A. Power Platform dataflows
 B. Data Import Wizard
 C. import from CSV
 D. Microsoft Excel Online

Answer: B

Explanation:

Dataverse includes a web application tool called Import Data Wizard. You use this tool to import data records from one or more comma-separated values (.csv), XML Spreadsheet 2003 (.xml), or text files. Use transformation mapping to modify data before importing it. For example, split a full name that is contained in the source file into a first name and a last name to match the target columns for a table.

Note:

To implement data import, you typically do the following:

- Create a comma-separated values (CSV), XML Spreadsheet 2003 (XMLSS), or text source file. Create a data map or use an existing data map.
- Create a comma-separated values (CSV), XML Spreadsheet 2003 (XMLSS), or text source file.
- Create a data map or use an existing data map. Associate an import file with a data map.
- Upload the content from a source file to the associated import file. Parse the import file.
- Transform the parsed data.
- Upload the transformed data into the target Dataverse server.

Reference: <https://docs.microsoft.com/en-us/powerapps/developer/data-platform/import-data> <https://docs.microsoft.com/en-us/powerapps/developer/data-platform/add-transformation-mappings-import>

NEW QUESTION 10

A company has a Power Platform environment that connects to a third-party marketing application. The company reports that the data in the Power Platform lead table does not match data from the marketing application. Issues include:

- _ The owner data in the lead table and the third-party application do not match.
- _ The Topic column has more information than the related record from the marketing application. There are differences in how telephone numbers are formatted.

You need to determine which processes are causing the issues.

Which three processes may be causing the differences observed? Each correct answer presents a complete solution.

NOTE: Each correct selection is worth one point.

- A. Dataflow
- B. Business rule
- C. Classic workflow
- D. Power Automate cloud flow
- E. Duplicate detection rule

Answer: ABC

Explanation:

A: With advanced data preparation available in Power Apps, you can create a collection of data called a dataflow, which you can then use to connect with business data from various sources, clean the data, transform it, and then load it to Microsoft Dataverse or your organization’s Azure Data Lake Gen2 storage account.

_ B: By combining conditions and actions, you can do any of the following with business rules: Set column values
Clear column values
Set column requirement levels Show or hide columns
Enable or disable columns
Validate data and show error messages
Create business recommendations based on business intelligence.

C: Duplicate detection works by comparing generated match codes of existing records with each new record being created. These match codes are created as each new record is created. Therefore, there is potential for one or more duplicate records to be created if they are processed at the exact same moment. In addition to detecting duplicates as they are created, you should schedule duplicate detection jobs to check for other potential duplicate records.

Reference:
<https://docs.microsoft.com/en-us/powerapps/maker/data-platform/data-platform-create-business-rule>
<https://docs.microsoft.com/en-us/powerapps/maker/data-platform/create-and-use-dataflows>
<https://docs.microsoft.com/en-us/powerapps/developer/data-platform/duplicaterule-entities>

NEW QUESTION 10

HOTSPOT

You need to ensure that the solution meets the data security and compliance requirements. What should you recommend? To answer, select the appropriate options in the answer area. NOTE: Each correct selection is worth one point.

Hot Area:

Scenario

Relationship behavior

A worker transfers to a new client company.

Assign: Cascade All

Assign: Cascade None

Merge: Cascade All

Rollup View: Cascade All

A user deletes a worker’s job placement history.

Delete: Cascade All

Delete: Remove Link

Delete: Restrict

- A. Mastered
- B. Not Mastered

Answer: A

Explanation:

Box 1: Assign: Cascade None

Scenario: Worker still records must be archived after ten years and are then removed from the main system. Assign: The referenced table record owner is changed.

Cascade None: Do nothing.

Incorrect Answers:

Cascade All: Perform the action on all referencing table records associated with the referenced table record. Box 2: Delete: Restrict

Scenario: Worker information must not be deleted from the system while skill and job placement history records for the worker exist in the system.

Referential, Restrict Delete: In a referential, restrict delete relationship between two tables, you can navigate to any related rows. Actions taken on the parent row will not be applied to the child row, but the parent row cannot be deleted while the child row exists. This is useful if you do not want child rows to become orphaned. This forces the user to delete all of the children before deleting the parent.

Reference: <https://docs.microsoft.com/en-us/powerapps/maker/data-platform/data-platform-entity-lookup>

Testlet 3 Case study

This is a case study. Case studies are not timed separately. You can use as much exam time as you would like to complete each case. However, there may be additional case studies and sections on this exam. You must manage your time to ensure that you are able to complete all questions included on this exam in the time provided.

To answer the questions included in a case study, you will need to reference information that is provided in the case study. Case studies might contain exhibits and other resources that provide more information about the scenario that is described in the case study. Each question is independent of the other questions in this case study.

At the end of this case study, a review screen will appear. This screen allows you to review your answers and to make changes before you move to the next section of the exam. After you begin a new section, you cannot return to this section.

To start the case study

To display the first question in this case study, click the Next button. Use the buttons in the left pane to explore the content of the case study before you answer the questions. Clicking these buttons displays information such as business requirements, existing environment, and problem statements. If the case study has an All Information tab, note that the information displayed is identical to the information displayed on the subsequent tabs. When you are ready to answer a question, click the Question button to return to the question.

Background

Relecloud provides regional air service in North America. The company uses a variety of systems, apps, and services to manage the business. You are hired to design a new solution to manage passenger information, reservations, and maintenance.

Current environment

The company uses Microsoft Office 365.

The company has a custom app for managing and tracking passenger luggage. The app uses Microsoft Dataverse.

For flights longer than four hours, passengers receive a meal. Customers can select a meal when they make a reservation and can save the meal choices as a customer preference.

The company offers two types of meals: standard and vegetarian. Meal types can be temporarily unavailable. The airline is considering offering other meal types, such as gluten-free and low-sodium options. The company uses paper-based reservation checklists to help ensure that all the steps for a reservation are complete. The company uses vendors to service aircraft.

Environment

Ensure that employees can sign in to all Microsoft apps by using one set of credentials per employee. Minimize the use of third-party products and custom development.

Reduce customer support call volumes by having the system automatically resolve common issues.

The security rule for agents must contain the privileges in the default Customer Service Representative security role.

Log issues as cases. The case form must show variable sections based on the case type. Include a custom entity named Seats and grant agents access to the entity. Application use layout should be role specific.

Agents

You must standardize the format used by agents to enter customer phone numbers. Agents need a solution to replace paper reservation checklists.

Agents need dashboards to show a current count of all reservations on the entity. Agents need a way to track reservation issues.

Agents need a visual indicator in the interface to determine the reservation step to provide a seamless customer experience.

Agents need different versions of cancellation policies to send customers. One version must be controllable within the system. Agents need to view which pieces of luggage match to each passenger, and then need to add the total on the passenger record.

IT

IT staff needs a mobile solution to see IT cases at the top of the menu since this is their primary focus. IT staff needs a system that is easy to navigate to active cases.

IT specialists want to design Power BI reports. They need to understand the underlying table relationships of the system. IT specialists need a solution that is visual rather than text-based so they can quickly complete their tasks.

Management

Management requires paginated reports for stakeholders.

Management wants to provide frequent flyers with better service when the flyers call.

Managers need to see all customer dashboards at the top of their menu on their mobile device.

Maintenance

Maintenance supervisors must not have access to Dynamics 365 Customer Service. The supervisors must be able to communicate with the contracts team about contracts. Aircraft maintenance vendors must have only view and upload privileges to their invoices and receipts. Contracts with maintenance companies must be stored in Dynamics 365 Customer Service.

NEW QUESTION 13

You need to recommend the field type to use for configuring meal selections during reservation.

Which field type should you recommend?

- A. Global Option Set
- B. Lookup
- C. Option Set
- D. Two Options

Answer: C

Explanation:

Customers can select a meal when they make a reservation and can save the meal choices as a customer preference.

The company offers two types of meals: standard and vegetarian. Meal types can be temporarily unavailable. The airline is considering offering other meal types, such as gluten-free and low-sodium options.

In PowerApps Option set is one of the field types you can use in your Entity. The information type that Option Set stores is a list of text values. And here comes the

Option Set advantage – once you define its text values you can centrally managed it. Example:

Country Name
Poland
USA
England
India

Incorrect Answers:

A: Typically, you use global option sets to set fields so that different fields can share the same set of options, which are maintained in one location. Unlike local options sets which are defined only for a specific attribute, you can reuse global option sets. You will also see them used in request parameters in a manner similar to an enumeration.

Reference: <https://michalguzowski.pl/how-to-work-with-option-set-in-powerapps/>

NEW QUESTION 16

You need to recommend an authentication solution for the planned implementation of Dynamics 365. What should you include in the recommendation?

- A. Use synchronized identities.
- B. Use the Office 365 tenant for Dynamics 365 Customer Service.
- C. Create a new tenant for Dynamics 365 Customer Service.
- D. Use federated identities

Answer: A

Explanation:

Scenario: Ensure that employees can sign in to all Microsoft apps by using one set of credentials per employee.

Synchronized identity. Synchronize on-premises directory objects with Microsoft 365 and manage your users on-premises. You can also synchronize passwords so that the users have the same password on-premises and in the cloud, but they will have to sign in again to use Microsoft 365.

Incorrect Answers:

D: The benefit of federation is a single sign-on experience across Dynamics 365 Customer Engagement (on-premises) and Dynamics 365 Customer Engagement (on-premises) systems. This type of identity management is useful for large corporations that have hundreds or thousands of established users.

Reference: <https://docs.microsoft.com/en-us/power-platform/admin/manage-user-account-synchronization>

NEW QUESTION 21

HOTSPOT

You need to recommend a solution to meet user interface requirements.

What should you recommend? To answer, select the appropriate options in the answer area.

NOTE: Each correct selection is worth one point.

Hot Area:

Answer Area

Requirement	Solution
Visual representation of gauge readings with minimum and maximum tolerances.	<div><div></div><div>Create and embed a Power BI radial gauge. Create and embed a custom visualization component. Create and embed a standard Power Apps donut chart.</div></div>
Add visibility to the manufacturing inspection records for onsite technicians.	<div><div></div><div>Configure mobile offline synchronization. Add an inspection order to the work order form Modify the sitemap for Dynamics 365 Field Service.</div></div>

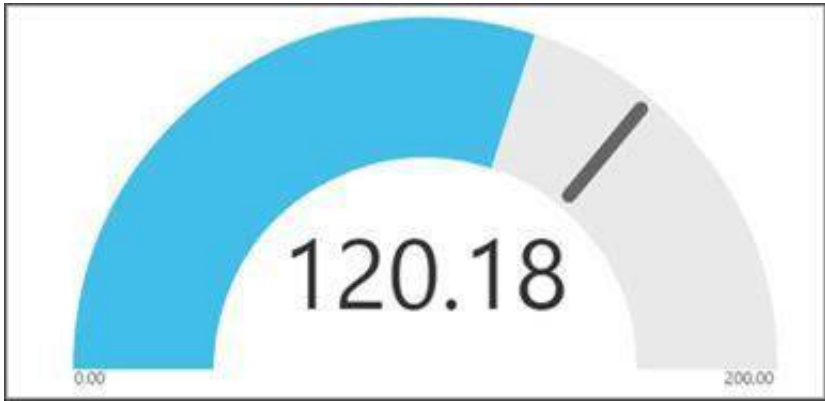
- A. Mastered
- B. Not Mastered

Answer: A

Explanation:

Box 1: Create and embed a Power Bi radial gauge

A radial gauge chart has a circular arc and shows a single value that measures progress toward a goal or a Key Performance Indicator (KPI). The line (or needle) represents the goal or target value. The shading represents the progress toward that goal. The value inside the arc represents the progress value. Power BI spreads all possible values evenly along the arc, from the minimum (left-most value) to the maximum (right-most value).

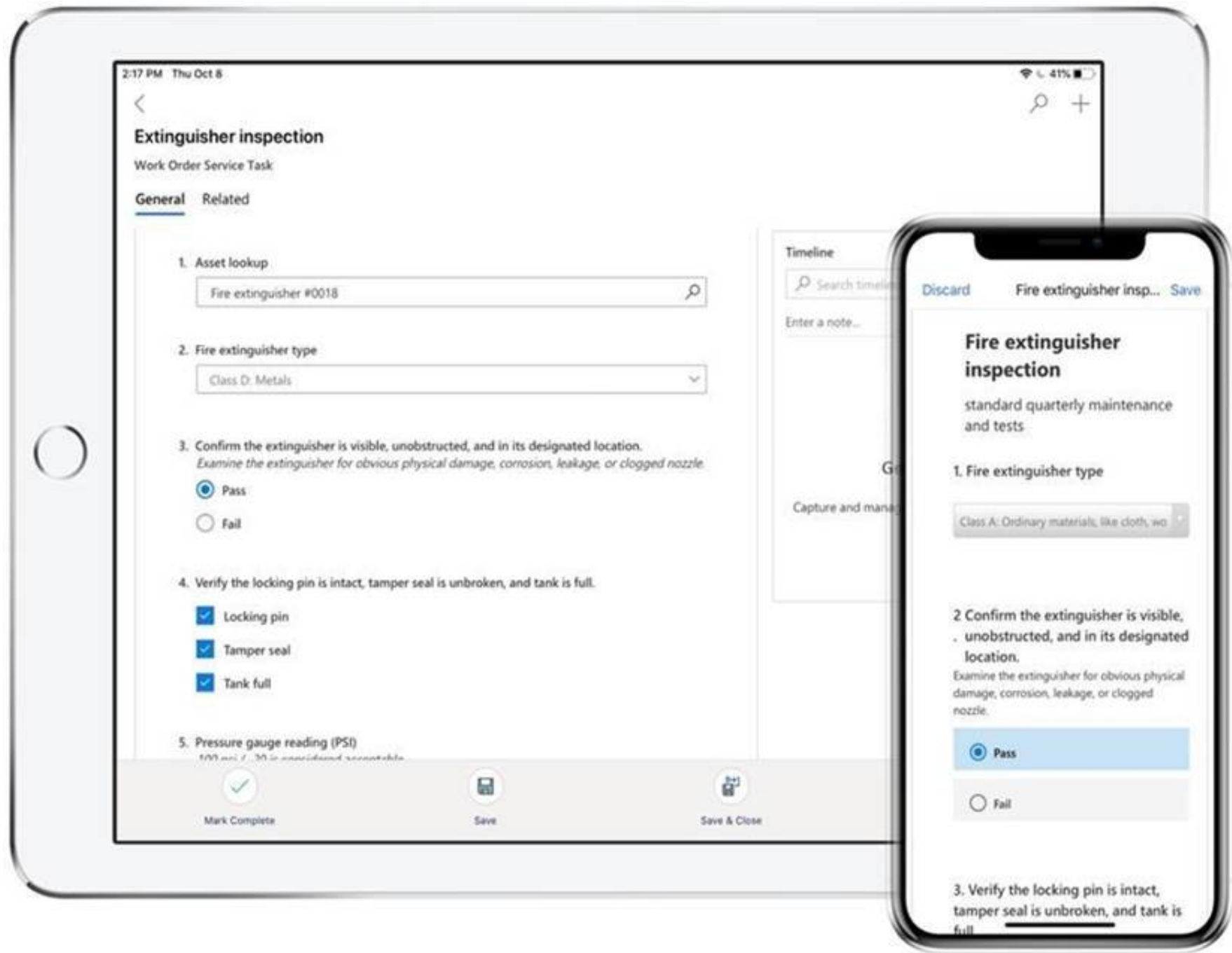


In this example, you're a car retailer tracking the sales team's average sales per month. The needle represents a 140 cars sales goal. The minimum possible average sales is 0 and the maximum is 200. The blue shading shows that the team is averaging approximately 120 sales this month.

Box 2: Add an inspection order to the work order form

You can add inspections to work orders in Dynamics 365 Field Service.

Field Service inspections are digital forms that technicians use to quickly and easily answer a list of questions as part of a work order. The list of questions can include safety protocols, pass-and-fail tests for a customer asset, an interview with a customer, or other audits and assessments performed before, during, or after a work order. Example:



Reference:
<https://docs.microsoft.com/en-us/power-bi/visuals/power-bi-visualization-radial-gauge-charts>
<https://docs.microsoft.com/en-us/dynamics365/field-service/inspections>

NEW QUESTION 23

HOTSPOT

You need to recommend solutions to meet the integration requirements.
 What should you recommend? To answer, select the appropriate options in the answer area.
 NOTE: Each correct selection is worth one point.

Hot Area:

Answer Area

Requirement	Solution
View, assign, and resolve inspection bottlenecks.	<div><div></div><div>Booking rules</div><div>Schedule board</div><div>Proficiency models</div></div>
Automatically input measurement readings from inspection gauges	<div><div></div><div>Custom connector</div><div>Azure IoT Hub connector</div><div>Azure IoT Central connector</div><div>Microsoft Dataverse connector</div></div>

- A. Mastered
B. Not Mastered

Answer: A

Explanation:

Box 1: Schedule board

Note: The Dynamics 365 Field Service schedule board provides an overview of resource availability and bookings you can make. When you're looking at the schedule board for the current day, you'll see a blue line that indicates the current time of day. You can also see a picture of all the resources listed on the schedule board. To quickly view contact information for a resource, hover over their name to view the contact card.



Box 2: Azure IoT Central connector

Azure IoT Central makes it easy to connect, monitor, and manage your IoT devices at scale. With the IoT Central V3 connector, you can trigger workflows when a rule has fired, and take actions by executing commands, updating properties, getting telemetry from devices, and more. Use this connector with your Azure IoT Central V3 application.

This connector is available in the following products and regions:

Service	Class	Regions
Logic Apps	Standard	All Logic Apps regions ↗ except the following: <ul style="list-style-type: none">- Azure Government regions- Azure China regions
Power Automate	Premium	All Power Automate regions except the following: <ul style="list-style-type: none">- US Government (GCC)- US Government (GCC High)- China Cloud operated by 21Vianet
Power Apps	Premium	All Power Apps regions except the following: <ul style="list-style-type: none">- US Government (GCC)- US Government (GCC High)- China Cloud operated by 21Vianet

Reference:
<https://docs.microsoft.com/en-us/dynamics365/field-service/configure-schedule-board>
<https://docs.microsoft.com/en-us/azure/iot-hub/about-iot-hub>

NEW QUESTION 27

HOTSPOT

You need to design the quality inspection order data model.
What should you recommend? To answer, select the appropriate options in the answer area.
NOTE: Each correct selection is worth one point.
Hot Area:

Answer Area

Requirement	Action
Obtain the serial number and other machine attributes for use in the inspection order.	<div><div></div><div>Use a virtual table. Import to a custom table. Create a lookup to Dynamics 365 Field Service.</div></div>
Configure the relationship between inspection orders and inspection ratings.	<div><div></div><div>Create a one-to-many relationship and set the behavior to Parental. Create a many-to-many relationship and set the behavior to Parental. Create a one-to-many relationship and set the behavior to Cascade None. Create a many-to-many relationship and set the behavior to Cascade None.</div></div>

- A. Mastered
- B. Not Mastered

Answer: A

Explanation:

Box 1: Create a lookup to Dynamics 365 Field Service
Scenario: Machines are assigned serial numbers and placed in stock until they are shipped to customers.
Entity lookup: Allows technicians to choose a Dynamics 365 record. In the inspection designer interface, admins must select an entity and a field to display. For a chosen entity, the Name field and mandatory fields are the entity attributes that can be displayed in the lookup.
Box 2: Create a one-to-many relationship and set the behavior to Parental
Scenario: Inspection orders must:
Allow entry of quality ratings of passed or failed for each quality metric identified for the machine being rated. Be automatically marked as failed if one inspection step rating is marked as failed.
Each inspection order can have one or many inspection steps, and each inspection step has a rating.
Note: Each pair of tables that are eligible to have a 1:N relationship can have multiple 1:N relationships between them. Yet usually only one of those relationships can be considered a parental table relationship.
Reference: <https://docs.microsoft.com/en-us/dynamics365/field-service/inspections> <https://docs.microsoft.com/en-us/powerapps/maker/data-platform/create-edit-entity-relationships>

NEW QUESTION 32

HOTSPOT
You design a Power Platform solution for a customer. The solution uses Microsoft Dataverse as the data store. You are managing the go-live process for the solution. The customer reports the following performance issues:
Form load time is much slower than it was during testing.
Overall system performance has been significantly slower that it was during testing. You need to recommend how to troubleshoot system performance.
Which actions should you recommend? To answer, select the appropriate options in the answer area.
NOTE: Each correct selection is worth one point.
Hot Area: Correct
[MISSING]

- A. Mastered
- B. Not Mastered

Answer: A

Explanation:

Box 1: Review the fields that are on the form
Keep the number of table columns (fields) to a minimum.
The more table columns (formerly referred to as fields) you have in a form, the more data that needs to be downloaded to view each record.
Box 2: Review one to many relationships to verify whether cascade settings are necessary.
Reference: <https://docs.microsoft.com/en-us/powerapps/maker/model-driven-apps/optimize-form-performance>

NEW QUESTION 37

.....

Thank You for Trying Our Product

We offer two products:

1st - We have Practice Tests Software with Actual Exam Questions

2nd - Questions and Answers in PDF Format

PL-600 Practice Exam Features:

- * PL-600 Questions and Answers Updated Frequently
- * PL-600 Practice Questions Verified by Expert Senior Certified Staff
- * PL-600 Most Realistic Questions that Guarantee you a Pass on Your First Try
- * PL-600 Practice Test Questions in Multiple Choice Formats and Updates for 1 Year

100% Actual & Verified — Instant Download, Please Click
[Order The PL-600 Practice Test Here](#)