

HPE0-J68 Dumps

HPE Storage Solutions

<https://www.certleader.com/HPE0-J68-dumps.html>



NEW QUESTION 1

- (Exam Topic 1)

You deployed and configured an all-flash Nimble array. The customer wants to attach their Windows-based server to the array. Which HPE tool can you use on the host server to make the integration easier?

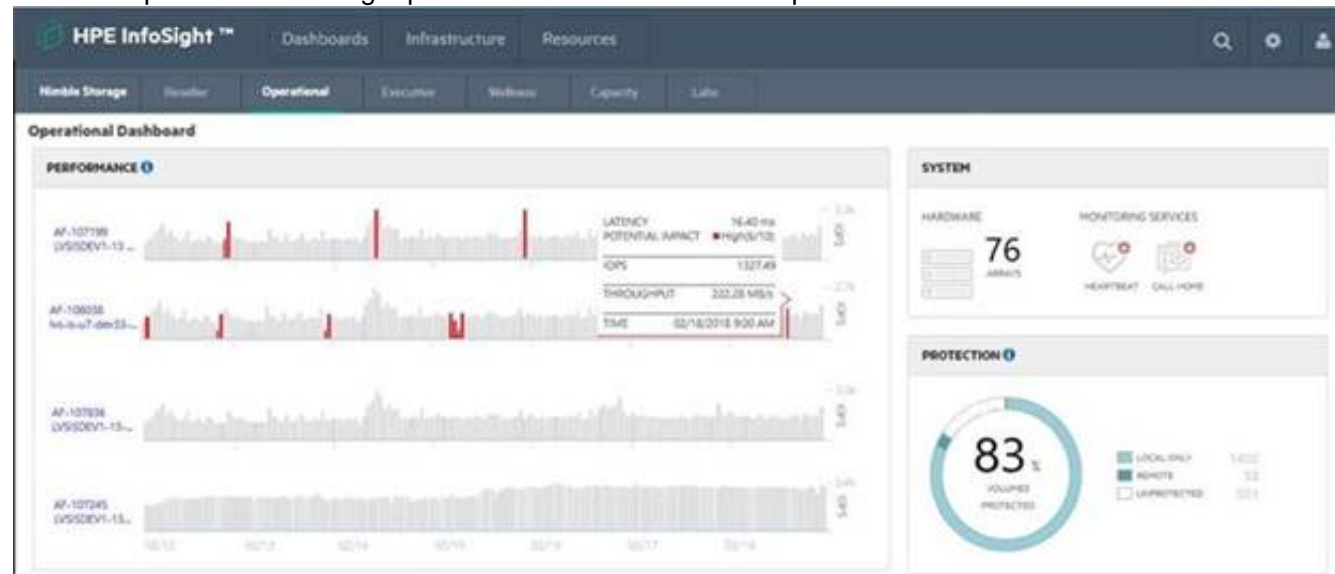
- A. StorServe Management Console
- B. Channel bonding
- C. Connection Manager
- D. Centralized Management Console

Answer: C

NEW QUESTION 2

- (Exam Topic 1)

A customer has a Nimble HF40 and needs to create a support ticket. Click the option in the InfoSight portal where the customer can perform this task.

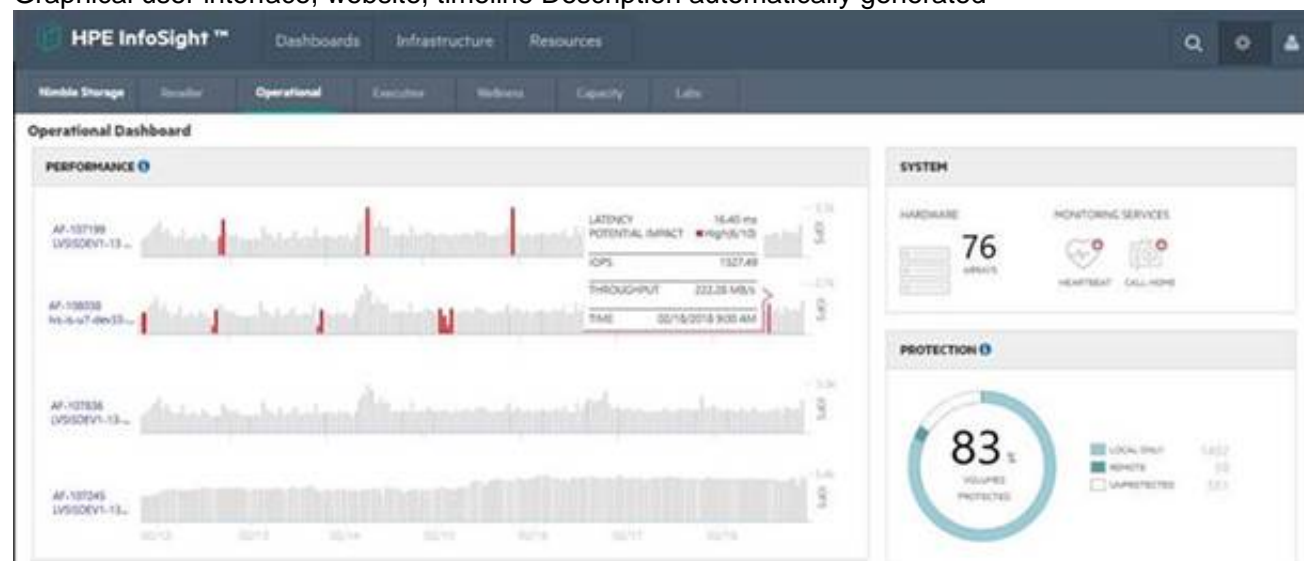


- A. Mastered
- B. Not Mastered

Answer: A

Explanation:

Graphical user interface, website, timeline Description automatically generated



NEW QUESTION 3

- (Exam Topic 1)

Match each address with the associated address type.

Type	Address Format
FC	<input type="text"/> 20:32:00:60:69:e2:19:82
IPv6	<input type="text"/> 00:1B:44:11:3A:B7
iSCSI	<input type="text"/> iqn.2000-05.com.3pardata:20210002ac00851c:15.372.28.0
MAC	<input type="text"/> fe80::85b0:5df6:1dfb:6793

- A. Mastered
- B. Not Mastered

Answer: A

Explanation:

Graphical user interface, text, application Description automatically generated

NEW QUESTION 4

- (Exam Topic 1)

You need to deploy a Recovery Manager Central appliance and integrate it with a customer's 3PAR system. Which information must be collected from the customer in order to proceed with the installer? (Choose two.)

- A. StoreOnce store name
- B. vCenter IP address or hostname
- C. HPE 3PAR used capacity
- D. IP address of the RMC
- E. NFS path

Answer: CD

NEW QUESTION 5

- (Exam Topic 1)

Refer to the exhibit.



A customer purchased a Primera C6S0 array to replace several older 3PAR arrays. They plan to upgrade the system as each 3PAP reaches the end of its lease. The initial sizing included 100TB effective capacity for an Oracle database environment. The first 3PAR to come off lease has 100TB of VDI boot images that support thousands of users. Which addition to the Primera should you recommend?

A)

DRIVES	QTY	RAID	HA	RAW	SPARE	SYSTEM	USABLE
1.92TB SSD SFF	36	Raid 6 (10+2)	<input checked="" type="checkbox"/>	69.08 TB	6.91 TB	1.2 TB	50.81 TB >
14TB NL LFF	12	Raid 6 (10+2)	<input checked="" type="checkbox"/>	164.57 TB	27.43 TB	-	114.28 TB >
WORKLOADS				ESTIMATED PERFORMANCE ¹			
Random	8K	70 %	No	8	1,041 IOPS, 28.9 ms		

B)

DRIVES	QTY	RAID	HA	RAW	SPARE	SYSTEM	USABLE
1.92TB SSD SFF	36	Raid 6 (10+2)	<input checked="" type="checkbox"/>	69.08 TB	6.91 TB	-	57.81 TB >
2.4TB 10K SFF	60	Raid 6 (10+2)	<input checked="" type="checkbox"/>	143.15 TB	7.16 TB	1.2 TB	112.33 TB >
WORKLOADS				ESTIMATED PERFORMANCE ¹			
Random	8K	70 %	No	8	8,154 IOPS, 29.3 ms		

C)

DRIVES	QTY	RAID	HA	RAW	SPARE	SYSTEM	USABLE
1.92TB SSD SFF	36	Raid 6 (10+2)	<input checked="" type="checkbox"/>	69.08 TB	6.91 TB	1.2 TB	50.81 TB >
2.4TB 10K SFF	36	Raid 6 (10+2)	<input checked="" type="checkbox"/>	85.89 TB	4.77 TB	-	68.6 TB >
WORKLOADS				ESTIMATED PERFORMANCE ¹			
Random	8K	70 %	No	8	4,815 IOPS, 29.3 ms		

D)

DRIVES	QTY	RAID	HA	RAW	SPARE	SYSTEM	USABLE
1.92TB SSD SFF	36	Raid 6 (10+2)	<input checked="" type="checkbox"/>	69.08 TB	11.05 TB	1.2 TB	47.36 TB >
15.36TB SSD SFF	8	Raid 6 (6+2)	<input checked="" type="checkbox"/>	122.84 TB	19.66 TB	-	77.39 TB >
WORKLOADS				ESTIMATED PERFORMANCE ¹			
Random	8K	70 %	Yes	8	78,423 IOPS, 0.4 ms		

- A. Option A
- B. Option B
- C. Option C

D. Option D

Answer: B

NEW QUESTION 6

- (Exam Topic 1)

A customer has the following requirements for a storage solution: VMware environment 20 of standard business data 400 TB of video archive files 10 GB iSCSI connectivity

They are most concerned with the cost of the solution.

Which HPE storage solution offers the lowest cost while meeting the customer requirements?

- A. HPE Nimble
- B. HPE SimpliVity
- C. HPE Primera
- D. HPE MSA

Answer: C

NEW QUESTION 7

- (Exam Topic 1)

A customer successfully implemented an HPE Primera solution.

Which tool can be used to verify achieved savings from deduplication and compression in the customer solution?

- A. NinjaSTARS
- B. 3PAR Service Processor
- C. NinjaCrawler
- D. StoreServ System Management Console

Answer: D

NEW QUESTION 8

- (Exam Topic 1)

You are designing a new storage environment for a customer. They need good performance, but need to keep costs to a minimum.

They have a very limited staff, and staff is concerned about learning new technologies. You plan to recommend a Nimble HF20 solution.

Which storage connectivity components should you recommend?

- A. FlexFabric switches, Nimble iSCSI car
- B. FC adapters for servers
- C. FC switches, Nimble FC card, FC adapters for servers
- D. Ethernet switches, Nimble iSCSI card, dedicated NICs for servers
- E. Ethernet switches, Nimble FC card, dedicated FC for servers

Answer: C

NEW QUESTION 9

- (Exam Topic 1)

A customer runs their core application on an aging HPE 3PAR StoreServ 20000 Storage array. The application requires 100% availability.

Which HPE storage solution should you recommend?

- A. Nimble
- B. Nimble dHCI
- C. Primera
- D. MSA

Answer: C

NEW QUESTION 10

- (Exam Topic 1)

A customer asks you for a recommendation on setting up their new StoreOnce appliance. They plan to use NetBackup and need the highest performance setup they can get. Their local hosts are connected

via FC and the rest are connected via a WAN. Which backup target type should you recommend?

- A. VTL
- B. S3
- C. CIFS
- D. Catalyst

Answer: A

NEW QUESTION 10

- (Exam Topic 1)

Which tool is used to provide centralized management of 3PAR and Primera arrays?

- A. SMU
- B. Primera UI
- C. WebUI

D. SSMC

Answer: D

NEW QUESTION 12

- (Exam Topic 1)

A customer is planning to upgrade their HF40 controllers to support additional I/O requirements. To which model can they upgrade to meet their new requirements?

- A. AF60
- B. AF40
- C. HF60
- D. HF40C

Answer: D

NEW QUESTION 14

- (Exam Topic 1)

Select the correct initiation option for each HPE Primera function.

Answer Area

User Initiated		Stripe data across drives
Autonomic		Create Virtual Volumes
		Create Common Provisioning Groups
		Create RAID-6 Virtual Volumes
		Optional Performance Management
		Export LUNs

- A. Mastered
- B. Not Mastered

Answer: A

Explanation:

Graphical user interface, application Description automatically generated

NEW QUESTION 15

- (Exam Topic 1)

A customer purchased a StoreOnce 3620 earlier in the year and has decided to add a 10GBase- adapter to it, which the customer sourced elsewhere and installed themselves. They complain that the new adapter is not configurable.

What is the most likely reason for this issue?

- A. The StoreOnce software requires updating
- B. Secure boot must be enabled in the BIOS to securely enable HBAs
- C. The customer failed to install a License to Use (LTU) for it
- D. The StoreOnce needs to connect to InfoSight to validate the adapter authenticity

Answer: A

NEW QUESTION 20

- (Exam Topic 2)

A customer want to implement a virtualized environment and want to provide independent storage access to individual virtual servers. Which feature need to enabled on the B-series FC switches to support this solution?

- A. FCIP
- B. NPIV
- C. ALPA
- D. RSCN

Answer: B

NEW QUESTION 24

- (Exam Topic 2)

Which feature enables a non-disruptive environment where host-based multi-pathing software is not affected in the event of a firmware upgrade?

- A. HPE 3PAR Access Guard

- B. HPE 3PAR Persistent Ports
- C. HPE 3PAR Persistent Cache
- D. HPE 3PAR MPIO

Answer: B

NEW QUESTION 26

- (Exam Topic 2)

A customer wants to implement a management and monitoring tool for an HPE B-series SAN switch environment. You plan to recommend the HPE SAN Network Advisor.

Which information about the customer's environment will help you to decide which edition to recommend?

- A. FCIP support
- B. Amount of used fabrics
- C. FCoE support
- D. Fabric OS version

Answer: B

Explanation:

– SAN Network Advisor is available in three types of bundles:• No-charge SAN Professional: Up to 300 switch ports, 2 fabrics, B-series Fabric OS only.• For-charge SAN Professional Plus: Up to 2560 switch ports and 36 fabrics.• For-charge SAN Enterprise: Up to 15000 switch ports and 100 fabrics. This bundle is required for B-series DC SANBackbone Director, SN8000B 8-Slot SAN Director and FICON management.

NEW QUESTION 27

- (Exam Topic 2)

A customer has deployed an HPE 3PAR StoreServ 8400 with two nodes and three additional disk enclosure .They want to expand the solution with two additional nodes and three additional disk enclosure ..What must you do to expand the customers solution?

- A. The new disks must be imported before the new nodes can be added
- B. The existing nodes need to be take Offline
- C. The system should be updated to the latest supported OS before the hardware expansion
- D. The new nodes and enclosure must be placed in an adjacent racks

Answer: C

NEW QUESTION 31

- (Exam Topic 2)

A customer's environment consists of two HPE Synergy frames running VMware vSphere, HPE FlexFabric 5700 switches, and one HPE Nimble HF-series array connected via 10GbE-T ports to the FlexFabric switches. The customer is concerned about performance management of the whole solution stack.

When using infosight with VMvision and analyzing end-to-end latency, which of the components within the stack are displayed? (Choose Three)

- A. ISCSI network(SAN)
- B. Ethernet network (LAN)
- C. storage
- D. application
- E. operating system
- F. host

Answer: ADF

NEW QUESTION 32

- (Exam Topic 2)

A customer has a large deployment of HPE Synergy compute modules. HPE 3PAR StoreServ arrays, and HPE StoreOnce system in a single data center. They are concerned about the risk of data loss due to site disaster and seeks cost-effective offsite Disaster Recovery protection without the need to deploy a secondary site.

Which HPE solution should you recommend?

- A. HPE StoreOnce VSA
- B. HPE StoreOnce CloudBank
- C. HPE StoreOnce RMC
- D. HPE StoreOnce Catalyst

Answer: D

NEW QUESTION 33

- (Exam Topic 2)

What are two advantages of HPE Recovery Manager Central? (Select two.)

- A. Enables automatic transparent failover
- B. Less expensive than traditional backup
- C. Includes Peer Copy asynchronous replication
- D. Manual data provisioning and policy-based copy protection
- E. Integration capabilities utilizing HTML

Answer: BC

NEW QUESTION 37

- (Exam Topic 2)

How does the HPE StoreVirtual VSA storage platform scale performance and capacity?

- A. eliminates the need for storage controllers
- B. enables access through multiple protocols
- C. aggregates all resources into a single storage pool
- D. recreates storage pools on multiple devices

Answer: D

NEW QUESTION 42

- (Exam Topic 2)

Which technology is used in a B-series SAN switch to prevent communicate between unauthorized device?

- A. Port isolation
- B. IVR
- C. Zoning
- D. VSAN

Answer: A

NEW QUESTION 47

- (Exam Topic 2)

Which type of networking switch handles both Ethernet and fibre channel traffic?

- A. Director
- B. Virtual
- C. Edge
- D. Converged

Answer: D

NEW QUESTION 48

- (Exam Topic 2)

During Technology workshop ,the customer asks about different between converged and fibre channel switches. What would be a benefits of using flex fabric switches in a fibre channel storage environment?

- A. Support for combining multiple physical switches in to one virtual switch with a single IP address
- B. Support for six Ethernet and two fibre channel ,or six Ethernet and two iSCSI or eight Ethernet adapters per server.
- C. Zones can be configured for QoS with high ,medium, and low priorities within a fabric on a zone by zone basic
- D. In-flight compression and encryption provides efficient link utilization and security

Answer: A

NEW QUESTION 52

- (Exam Topic 2)

A customer asks for a 50 TB disk-based backup solution with deduplication. They also need additional storage for test/dev purposes.

Which single HPE storage platform can you present to the customer that will meet both of their needs?

- A. HPE Nimble SF series
- B. HPE StoreEasy Gateway
- C. HPE StoreOnce
- D. HPE Nimble CS series

Answer: A

Explanation:

HPE quick specs, they also offer the flash-optimized performance needed to run development/test, QA, and analytics workloads on your backup data—plus production workloads when needed.

NEW QUESTION 57

- (Exam Topic 2)

After a performance analysis, a customer plan to reorganize his adaptive Flash cache (AFC)

configuration and want to raise it from 256 to 768GB. Which action is needed to take advantage of the new AFC configuration?

- A. Remove flash cache for all VVS then run create Flash cache
- B. Increase current AFC configuration to reflect the additional space
- C. Remove the old AO configuration and recreate a new one
- D. Run tunesys after raising the AFC to take advantage of the additional space

Answer: A

NEW QUESTION 61

- (Exam Topic 2)

A customer has a large deployment of HPE Synergy compute modules, HPE 3PAR StoreServ storage, and HPE StoreOnce systems in a single data center. They

are concerned about the risk of data loss due to site disaster.
What is the reason to propose HPE CloudBank?

- A. To easily move workloads to AWS or Azure in the event of site disaster.
- B. To improve RPO/RTO objectives by automating snapshot-based integrating between 3PAR and StoreOnce.
- C. To regularly send backups to the cloud for the purposes of DR protection.
- D. To leverage 3PAR snapshots and utilize StoreOnce recovery capabilities to minimize data loss and downtime.

Answer: C

NEW QUESTION 64

- (Exam Topic 2)

Exhibit:



The customer has upgraded the first of their two HPE StoreServ 8200 to the latest inform OS version to take the advantage of the compression feature .You have been asked to design the storage configuration to support oracle database volume to utilize HPE 3PAR compression . Based on the analysis of the array .what would be your suggestion to implement the requested change?

- A. Install the catalyst agent on the oracle server to enable inline compression on the selected VV
- B. Configure the source-side the compression to offload compression to the Host
- C. Balance the workloads between the arrays to have enough headroom for compression
- D. Consider adding another node pair for compression to work efficiently

Answer: A

NEW QUESTION 69

- (Exam Topic 2)

While demonstrating an HPE 3PAR StoreServ 9450 array, the customer asks you to demonstrate the File Persona features.
Which objects do you need to create to demonstrate these features? (Choose two.)

- A. File share
- B. Storage container
- C. Host
- D. Remote copy group
- E. Virtual file server

Answer: AE

NEW QUESTION 73

- (Exam Topic 2)

A customer asks for an integrated solution for their remote office with All-Flesh storage and ease of management. Application-aware replication to their main office is an important requirement. Which HPE solution component should you discuss with the customer first?

- A. HPE SimpliVity 380
- B. HPE MSA 2052 Storage
- C. HPE Nimble CS1000 system
- D. HPE 3PAR StoreServ 8200

Answer: A

NEW QUESTION 78

- (Exam Topic 2)

A customer has an existing configuration consisting of first class and nearline SAS drive in an 8000 SFF enclosure. They add two SFF 8000 enclosure that are fully populated with nearline drives to an existing HPE 3Par storeserv 8400 array. What should the customer do to optimize their storage configuration?

- A. Defrag the CPG and run align drive on their system
- B. Run tunesys and on the array (275)
- C. Enable space reclamation
- D. Create new CPG for the newly installed drivers

Answer: B

NEW QUESTION 80

- (Exam Topic 2)

What performance benefit is provided by using the HPE StoreVirtual DSM for Microsoft MPIO instead of the standard MPIO?

- A. The HPE DSM increases availability and reduces latency and throughput.
- B. The storage system, which holds a copy of the requested data, services the read I/Os.
- C. The iSCSI connections are blocked to non-critical nodes in the cluster by default.
- D. The storage system, which receives a copy of the data, does not service the write I/O.

Answer: B

NEW QUESTION 85

- (Exam Topic 2)

A customer wants to expand his cascaded B-series based SAN but is concerned about latencies within the SAN backend. You recommend changing the topology to a full mesh.

Which switch feature will ensure that the latencies in the backend are at the lowest possible level?

- A. LACP
- B. NPIV
- C. FSPF
- D. VSF

Answer: C

NEW QUESTION 89

- (Exam Topic 2)

A customer has a SAN infrastructure with the HPE C-class blade Enclosure ,and a mix of proliant G7,gen8 and Ge9 server .They require a new storage platform ...

How can you confirm the storage array will be supported in the existing environment?

- A. Check recommended firmware levels in the HP SAN design reference guide to ensure firmware compatibility
- B. Document existing server and SAN information ,and consult SPOCK to ensure firmware compatibility
- C. Design and array with the latest firmware ,and recommend that the customer engage HPE point Next to upgrade the existing hardware
- D. Design an array with older version of the firmware to ensure compatibility

Answer: B

NEW QUESTION 90

- (Exam Topic 2)

Which value does a Nimble solution provide in addition to other HPE storage solutions?

- A. Flat support pricing for all hardware components
- B. Future-proofed for newer technologies
- C. All-inclusive software licensing over 5 years and additional capacity upgrades
- D. Upfront option for free controller upgrade after 3 years

Answer: B

NEW QUESTION 91

- (Exam Topic 2)

Which function is built into the HPE 3par OS and enable users to move data and workloads between array without impacting applications, users, or services?

- A. Peer persistence
- B. Adaptive optimization
- C. Peer motion
- D. Remote copy

Answer: A

NEW QUESTION 92

- (Exam Topic 2)

Which statement is correct when comparing functionalities of the AF,CF, and SF series in the nimble storage portfolio?

- A. Zero copy clone are unique feature of all flash array within the nimble portfolio
- B. SF series supports storage snapshots and replication using veeeam backup & replication CS and AF series support storage snapshot only.
- C. Inline deduplication for complete array capacity in combination with compression is offered by the AF and SF series only (67) need to check
- D. 99.9999% availability measured and guaranteed for AF and CF series arrays, SF series array offer 99.999% availability.

Answer: C

NEW QUESTION 97

- (Exam Topic 2)

Due to industry regulation a customer is required to store backup at a separate data center from the company's main data center. The customer application require fast backup and quick restore increase of data lose. Which solution allow the customer to meet both industry and application requirement?

- A. HPE storeServe 3par in main and secondary data center with RCIP replication between arrays
- B. Nimble AF series in main data center and Nimble SF series in secondary data center
- C. HPE Storeserve 3Par in main data center HPE StoreOnce in secondary data center with RMC
- D. HPR StoreServ 3PAR in main data center and HPE StoreOnce in both main and secondary data center.

Answer: C

NEW QUESTION 99

- (Exam Topic 2)

Refer to the exhibit:

Port ID	Label	System	Port Type	Port State	
0:1:1	-	3PAR	Host	Ready	
0:1:2	-	3PAR	Free	Loss Sync	
0:2:1	-	3PAR	Host	Ready	
0:2:2	-	3PAR	Host	Offline	
0:0:1	DP-1	3PAR	Disk	Ready	
0:0:2	DP-2	3PAR	Disk	Ready	
0:3:1	RCIP0	3PAR	RC	Offline	

0:1:1 Overview ▾ ⌵	
General	
Port ID	0:1:1
System	3PAR
Label	-
Protocol	FC
Rate	8 Gbps
Adapter type	EMULEX LPe12002
CNA port	No
WWN	
Port type	Host
Mode	Target
Mode change	Allowed
Connected devices	3 hosts

Which type of data format do you expect in the red rectangle?

- A. 172.16.31.11/24
- B. 94:b4:0f:cd:34:8a
- C. iqn.2015-02.com.hpe:oneview-vcgeDav000
- D. 20110002AC00736E235.524

Answer: D

NEW QUESTION 100

- (Exam Topic 2)

A customer's growing environment has a mix of HPE 3PAR StoreServ 8200 with 10K HDD, HPE 3PAR StoreServ 9450, and HPE 3PAR StoreServ 2080D with 3 tiers of storage deployed in the same data center. The customer needs to optimize performance by being able to move workloads to the most appropriate array as needed.

Which solution enables the customer to achieve this goal?

- A. HPE OneView to automate cpg migration based on user defined policies.
- B. HPE 3PAR Remote Copy in a Synchronous Long Distance topology.
- C. HPE Smart SAN to provide autonomic federated management.
- D. HPE 3PAR Peer Motion with SSMC to manage storage federation.

Answer: D

NEW QUESTION 104

- (Exam Topic 2)

During a proof-of-concept you need to implement an inter-switch-link (ISL) between two HPE SN6000B switches. Which port mode must be set enable communication between the switches?

- A. N_PORT
- B. FL_PORT (WRONG)
- C. F_PORT
- D. E_PORT (Correct)

Answer: D

NEW QUESTION 107

- (Exam Topic 2)

A customer recently acquired another company and found that the existing infrastructure was outdated and costly to maintain. They need to put a complete infrastructure solution in place that minimizes the footprint in the data center as quickly and possible. Which solution you recommend?

- A. Simplicity 380
- B. Bladesystem 7000
- C. Converged systems
- D. Synergy 12000

Answer: A

NEW QUESTION 108

- (Exam Topic 2)

A customer is looking for a centralized file-sharing solution that can provide print services in addition to 15TB of storage.

Which solution component should you recommend?

- A. FC switch
- B. NAS
- C. FC-based array
- D. Disk enclosure with integrated SAS switch

Answer: B

NEW QUESTION 109

- (Exam Topic 2)

A customer run several HPE 3PAR storeserv system in their environment using data rest encryption .The customer needs to add an HPE 3PAR Storeserv 8000system to the storage pool and an external key manager for all systems.. What is the requirement for this solution?

- A. Boot server for the existing 3PAR storeserv array must be replaced with self-encrypting drive
- B. All drives of the new HPE 3PAR storeserv array must be self-encrypting
- C. HPE ESKM FIPS mode must be disabled by the administrator
- D. Data on the existing HPE 3PAR storeserv array must be decrypted and re-encrypted with new keys

Answer: B

NEW QUESTION 113

- (Exam Topic 2)

A customer need a new storage system for visual desktop infrastructure environment to reduce the time required to provision new desktop. Which HPE solution should you recommended to fulfill this customers requirements?

- A. Snapclones on HPE MSA 2040
- B. SmartClone on HPE store virtual VSA(54)
- C. Storage pool on HPE store Easy
- D. Virtual Copy on HPE 3Par storeServ

Answer: B

NEW QUESTION 114

- (Exam Topic 2)

Where does HPE 3PAR StoreServ Data-at-Rest Encryption occur?

- A. ASIC
- B. physical disk
- C. processor
- D. host

Answer: B

NEW QUESTION 119

- (Exam Topic 2)

An HPE 3PAR StoreServ 9000 All-Flash Array customer plans to deploy a secondary array 20 km away from their primary array to enable storage replication over a dark fibre. Their existing environment consists of one HPE Synergy Frame 12000, HPE SN6000B Fibre Channel Switches, HPE FlexFabric 5700 Switch Series, and HPE StoreOnce Systems.

Which HPE license is required to meet the customer's technical requirements?

- A. Intelligent Resilient Framework licenses
- B. HPE StoreOnce Replication
- C. Extended Fabric
- D. HPE 3PAR Remote Copy

Answer: D

NEW QUESTION 121

- (Exam Topic 2)

A customer migrate their infrastructure from a 3rd party storage to a Nimble environment. During an architecture workshop, you discuss VMvision with the customer and the system engineer. Which statement is correct when implementing performance monitoring using VMVision?

- A. Nibmle service processor collects relevant per VM performance data and send them using SSL port 443 to VMvision
- B. VMvision is an agentless integration into infosight and needs only the Vcenter server appliance credentials to connec
- C. (page 112)
- D. VMware vSphere storage API's array integration (VAAI)has to be configured to combine storage and VM performance metrics
- E. SNMP trap service has to be configured to send traps to infosight and integrate performance data using VMvision.

Answer: C

NEW QUESTION 122

.....

Thank You for Trying Our Product

* 100% Pass or Money Back

All our products come with a 90-day Money Back Guarantee.

* One year free update

You can enjoy free update one year. 24x7 online support.

* Trusted by Millions

We currently serve more than 30,000,000 customers.

* Shop Securely

All transactions are protected by VeriSign!

100% Pass Your HPE0-J68 Exam with Our Prep Materials Via below:

<https://www.certleader.com/HPE0-J68-dumps.html>