

Exam Questions SnowPro-Core

SnowPro Core Certification Exam

<https://www.2passeasy.com/dumps/SnowPro-Core/>



NEW QUESTION 1

- (Exam Topic 1)

Which of the following statements would be used to export/unload data from Snowflake?

- A. COPY INTO @stage
- B. EXPORT TO @stage
- C. INSERT INTO @stage
- D. EXPORT_TO_STAGE(stage => @Wage, select => 'select * from t1');

Answer: A

Explanation:

Reference: <https://docs.snowflake.com/en/user-guide/data-unload-considerations.html>

NEW QUESTION 2

- (Exam Topic 1)

True or False: When active, a pipe requires a dedicated Virtual Warehouse to execute.

- A. True
- B. False

Answer: B

NEW QUESTION 3

- (Exam Topic 1)

Which of the following accurately represents how a table fits into Snowflake's logical container hierarchy? Select one.

- A. Account -> Schema -> Database -> Table
- B. Account -> Database -> Schema -> Table
- C. Database -> Schema -> Table -> Account
- D. Database -> Table -> Schema -> Account

Answer: B

Explanation:

Reference: <https://docs.snowflake.com/en/sql-reference/ddl-database.html>

NEW QUESTION 4

- (Exam Topic 1)

The FLATEEN function is used to query which type of data in Snowflake?

- A. Structured data
- B. Semi-structured data
- C. Both of the above
- D. None of the above

Answer: B

Explanation:

Reference: <https://docs.snowflake.com/en/user-guide/querying-semistructured.html>

FLATTEN is used to unnest semi-structured data. Don't see an application for structured data as by definition it shouldn't be nested.

NEW QUESTION 5

- (Exam Topic 1)

Which of the following connectors allow Multi-Factor Authentication (MFA) authorization when connecting? (Choose all that apply.)

- A. JDBC
- B. SnowSQL
- C. Snowflake Web Interface (UI)
- D. ODBC
- E. PythonD18912E1457D5D1DDCBD40AB3BF70D5D

Answer: ABCDE

Explanation:

Reference: <https://docs.snowflake.com/en/user-guide/security-mfa.html>

NEW QUESTION 6

- (Exam Topic 1)

Which type of table corresponds to a single Snowflake session?

- A. Temporary
- B. Transient
- C. Provisional
- D. Permanent

Answer: A

Explanation:

Snowflake supports creating temporary tables for storing non-permanent, transitory data (e.g. ETL data, session-specific data). Temporary tables only exist within the session in which they were created and persist only for the remainder of the session.
<https://docs.snowflake.com/en/user-guide/tables-temp-transient.html#:~:text=Snowflake%20supports%20creatin>

NEW QUESTION 7

- (Exam Topic 1)

The Query History in the Snowflake Web Interface (UI) is kept for approximately:

- A. 60 minutes
- B. 24 hours
- C. 14 days
- D. 30 days
- E. 1 year

Answer: C

Explanation:

Reference: https://docs.snowflake.com/en/sql-reference/account-usage/query_history.html

NEW QUESTION 8

- (Exam Topic 1)

True or False: A customer using SnowSQL / native connectors will be unable to also use the Snowflake Web interface (UI) unless access to the UI is explicitly granted by supported.

- A. True
- B. False

Answer: B

Explanation:

Reference: <https://docs.snowflake.com/en/user-guide/connecting.html>

NEW QUESTION 9

- (Exam Topic 1)

True or False: A Snowflake account is charged for data stored in both Internal and External Stages.

- A. True
- B. False

Answer: A

Explanation:

Reference: <https://docs.snowflake.com/en/user-guide/tables-storage-considerations.html>

NEW QUESTION 10

- (Exam Topic 1)

Which of the following statements are true of VALIDATION_MODE in Snowflake? (Choose two.)

- A. The validation_mode option is used when creating an Internal Stage
- B. validation_mode=return_all_errors is a parameter of the copy command
- C. The validation_mode option will validate data to be loaded by the copy statement while completing the load and will return the rows that could not be loaded without error
- D. The validation_mode option will validate data to be loaded by the copy statement without completing the load and will return possible errors

Answer: BD

Explanation:

Reference: <https://docs.snowflake.com/en/user-guide/data-load-bulk-ts.html>

NEW QUESTION 10

- (Exam Topic 1)

True or False: Some queries can be answered through the metadata cache and do not require an active Virtual Warehouse.

- A. True
- B. False

Answer: A

Explanation:

Some aggregate queries are answered thru micro partitions metadata only not requiring any VW spin ups.

NEW QUESTION 13

- (Exam Topic 1)
How a Snowpipe charges calculated?

- A. Per-second/per Warehouse size
- B. Per-second/per-core granularity
- C. Number of Pipes in account
- D. Total storage bucket size

Answer: B

Explanation:

Reference: <https://docs.snowflake.com/en/user-guide/data-load-snowpipe-billing.html>

NEW QUESTION 17

- (Exam Topic 1)
True or False: Data in Fail-safe can be deleted by a user or the Snowflake team before it expires.

- A. True
- B. False

Answer: B

Explanation:

Reference: <https://blog.knoldus.com/ksnow-time-travel-and-fail-safe-in-snowflake/>

NEW QUESTION 22

- (Exam Topic 1)
Which of the following statements are true about Schemas in Snowflake? (Choose two.)

- A. A Schema may contain one or more Databases
- B. A Database may contain one or more Schemas
- C. A Schema is a logical grouping of Database Objects
- D. Each Schema is contained within a Warehouse

Answer: BC

Explanation:

Reference: <https://docs.snowflake.com/en/user-guide/data-sharing-multiple-db.html>

NEW QUESTION 24

- (Exam Topic 1)
A role is created and owns 2 tables. This role is then dropped. Who will now own the two tables?

- A. The tables are now orphaned
- B. The user that deleted the role
- C. SYSADMIN
- D. The assumed role that dropped the role

Answer: D

Explanation:

Reference: <https://docs.snowflake.com/en/sql-reference/sql/drop-role.html>

NEW QUESTION 28

- (Exam Topic 1)
Which of the following are valid Snowflake Virtual Warehouse Scaling Policies? (Choose two.)

- A. Custom
- B. Economy
- C. Optimized
- D. Standard

Answer: BD

Explanation:

Reference: <https://community.snowflake.com/s/article/Snowflake-Visualizing-Warehouse-Performance>

NEW QUESTION 31

- (Exam Topic 1)
Snowflake provides a mechanism for its customers to override its clustering algorithms. This method is:

- A. Micro-partitions
- B. Clustering keys
- C. Key partitions
- D. Clustered partitions

Answer: B

Explanation:

Reference: <https://community.snowflake.com/s/article/Snowflake-What-the-Cluster>

NEW QUESTION 35

- (Exam Topic 1)

Which of the following are common use cases for zero-copy cloning? Choose 3 answers

- A. Quick provisioning of Dev and Test/QA environments
- B. Data backups
- C. Point in time snapshots
- D. Performance optimization

Answer: ABC

Explanation:

Reference: <https://community.snowflake.com/s/question/0D50Z00009C3VIMSAV/zero-copy-cloning>

NEW QUESTION 37

- (Exam Topic 1)

True or False: When data share is established between a Data Provider and a data Consumer, the Data Consumer can extend that data share to other Data Consumers.

- A. True
- B. False

Answer: B

Explanation:

Reference: <https://docs.snowflake.com/en/user-guide/data-sharing-intro.html>

NEW QUESTION 40

- (Exam Topic 1)

For a multi-cluster Warehouse, the number of credits billed is calculated on: Select one.

- A. The number of queries that ran using the Warehouse.
- B. The size of the Warehouse and the number of clusters that ran within a given time period.
- C. The sue of the Warehouse and the maximum number of clusters configured for the Warehouse.
- D. The number of users who accessed the Warehouse.

Answer: B

NEW QUESTION 41

- (Exam Topic 1)

If a Small Warehouse is made up of 2 servers/cluster, how many servers/cluster make up a Medium Warehouse?

- A. 4
- B. 16
- C. 32
- D. 128

Answer: A

Explanation:

Reference: <https://docs.snowflake.com/en/user-guide/warehouses-overview.html>

NEW QUESTION 43

- (Exam Topic 1)

Which is true of Snowflake network policies? A Snowflake network policy: (Choose two.)

- A. Is available to all Snowflake Editions
- B. Is only available to customers with Business Critical Edition
- C. Restricts or enables access to specific IP addresses
- D. Is activated using an “ALTER DATABASE” command

Answer: AC

Explanation:

Reference: <https://docs.snowflake.com/en/sql-reference/sql/create-network-policy.html>

NEW QUESTION 45

- (Exam Topic 1)

The PUT command: (Choose two.)

- A. Automatically creates a File Format object
- B. Automatically uses the last Stage created
- C. Automatically compresses files using Gzip

D. Automatically encrypts files

Answer: CD

Explanation:

Reference: <https://docs.snowflake.com/en/sql-reference/sql/put.html>

NEW QUESTION 46

- (Exam Topic 1)

When scaling out by adding clusters to a multi-cluster warehouse, you are primarily scaling for improved:

- A. Concurrency
- B. Performance

Answer: A

Explanation:

Reference: <https://docs.snowflake.com/en/user-guide/warehouses-multicloud.html>

NEW QUESTION 50

- (Exam Topic 1)

When scaling up Virtual Warehouse by increasing Virtual Warehouse t-shirt size, you are primarily scaling for improved:
Select one.

- A. Concurrency
- B. Performance

Answer: B

Explanation:

Reference:

<https://docs.snowflake.com/en/user-guide/warehouses-considerations.html#warehouse-resizing-improves-performance>

NEW QUESTION 52

- (Exam Topic 1)

True or False: You can resize a Virtual Warehouse while queries are running.

- A. True
- B. False

Answer: A

Explanation:

Reference: <https://docs.snowflake.com/en/user-guide/warehouses-tasks.html>

NEW QUESTION 55

- (Exam Topic 1)

True or False: Bulk unloading of data from Snowflake supports the use of a SELECT statement.

- A. True
- B. False

Answer: A

Explanation:

Reference: <https://docs.snowflake.com/en/user-guide-data-unload.html>

NEW QUESTION 60

- (Exam Topic 1)

True or False: Reader Accounts incur no additional Compute costs to the Data Provider since they are simply reading the shared data without making changes.

- A. True
- B. False

Answer: B

Explanation:

Reference: <https://interworks.com/blog/bdu/2020/02/05/zero-to-snowflake-secure-data-sharing/>

NEW QUESTION 61

- (Exam Topic 1)

True or False: Snowflake supports federated authentication in all editions.

- A. True
- B. False

Answer: A

Explanation:

Reference:

<https://community.snowflake.com/s/news/federated-authentication-sso-now-available-in-all-snowflake-editions>

NEW QUESTION 62

- (Exam Topic 1)

Which of the following statements is true of Snowflake?

- A. It was built specifically for the cloud
- B. It was built as an on-premises solution and then ported to the cloud
- C. It was designed as a hybrid database to allow customers to store data either on premises or in the cloud
- D. It was built for Hadoop architecture
- E. It's based on an Oracle Architecture

Answer: A

Explanation:

Reference: <https://www.stitchdata.com/resources/snowflake/>

NEW QUESTION 63

- (Exam Topic 1)

True or False: Once created, a micro-partition will never be changed.

- A. True
- B. False

Answer: A

Explanation:

Reference: <https://interworks.com/blog/kbridges/2019/03/12/time-travel-with-snowflake/>

NEW QUESTION 64

- (Exam Topic 1)

When a Pipe is recreated using the CREATE OR REPLACE PIPE command:

- A. The Pipe load history is reset to empty
- B. The REFRESH parameter is set to TRUE
- C. Previously loaded files will be ignored
- D. All of the above

Answer: A

Explanation:

<https://docs.snowflake.com/en/user-guide/data-load-snowpipe-manage.html#load-history> "When a pipe is recreated, the load history is dropped."

NEW QUESTION 67

- (Exam Topic 1)

Which formats are supported for unloading data from Snowflake? Choose 2 answers

- A. Delimited (CSV, TSV, etc.)
- B. Avro
- C. JSON
- D. ORC

Answer: AC

Explanation:

Reference: <https://docs.snowflake.com/en/user-guide/data-unload-prepare.html>

NEW QUESTION 68

- (Exam Topic 1)

In which layer of its architecture does Snowflake store its metadata statistics? Select one.

- A. Storage Layer
- B. Compute Layer
- C. Database Layer
- D. Cloud Service Layer

Answer: D

Explanation:

Reference: <https://hevodata.com/blog/snowflake-architecture-cloud-data-warehouse/>

NEW QUESTION 69

- (Exam Topic 1)

Which of the following are options when creating a virtual Warehouse? Choose 2 answers

- A. Auto-drop
- B. Auto resize
- C. Auto-resume
- D. Auto-suspend

Answer: CD

Explanation:

Reference: https://help.pentaho.com/Documentation/9.1/Products/Create_Snowflake_warehouse Reference: <https://www.analytics.today/blog/what-is-a-snowflake-virtual-warehouse>

NEW QUESTION 70

- (Exam Topic 1)

Which of the following statements is true of data loading? Select one.

- A. Resizing the virtual warehouse from x-Small to Small will process a single file twice as fast
- B. The "deal file size for loading is 16MB to match micro-partition size
- C. Marry files in the 10-IOOMB range tend to land In the 'sweet spot" for load parallelism Once loaded, there is no option to force a reload of an already loaded file

Answer: C

NEW QUESTION 72

- (Exam Topic 1)

What is the minimum Snowflake edition that provides multi-cluster warehouses and up to 90 days of Time Travel?

- A. Standard
- B. Premier
- C. Enterprise
- D. Business Critical Edition

Answer: C

Explanation:

Reference: <https://docs.snowflake.com/en/user-guide/intro-editions.html>

NEW QUESTION 75

- (Exam Topic 1)

True or False: When you create a custom role, it is a practice to immediately grant that role to ACCOUNTADMIN.

- A. True
- B. False

Answer: B

NEW QUESTION 76

- (Exam Topic 1)

True or False: Snowpipe via RFST API can only reference External Stages as source.

- A. True
- B. False

Answer: B

Explanation:

Reference: <https://community.snowflake.com/s/article/Making-Transient-table-by-Default>

NEW QUESTION 77

- (Exam Topic 1)

True or False: You can define multiple columns within a clustering key on a table.

- A. True
- B. False

Answer: A

Explanation:

Reference: <https://docs.snowflake.com/en/user-guide/tables-clustering-keys.html>

NEW QUESTION 80

- (Exam Topic 1)

Which of the following connectors are available in the Downloads section of the Snowflake web Interface (UI)?
Choose 2 answers

- A. SnowSQL
- B. ODBC
- C. R
- D. HIVE

Answer: AB

Explanation:

Reference: <https://docs.snowflake.com/en/user-guide/connecting.html>

NEW QUESTION 81

- (Exam Topic 1)

Which of the following items does the Cloud services Layer manage? Choose 4 answers

- A. user authentication
- B. Metadata
- C. Query compilation and optimization
- D. external blob storage
- E. Data security

Answer: ABCE

NEW QUESTION 83

- (Exam Topic 1)

True or False: A table in Snowflake can only be queried using the Virtual Warehouse that was used to load the data.

- A. True
- B. False

Answer: B

NEW QUESTION 85

- (Exam Topic 1)

How would you execute a series of SQL statements using Task?

- A. include the SQL statements in the body of the task create task mytask.. as insert into target1 select., from stream_s1 where ..INSERT INTO target2 SELECT .. FROM stream .s1 where ..
- B. A stored procedure can have only one DML statement per stored procedure invocation and therefore you should sequence stored procedures calls in the task definition CREATE TASK mytask.... AS call stored_prc1(); call stored_proc2t);
- C. A stored procedure executing multiple SQL statements and invoke the stored procedure from the task.CREATE TASK mytask.... AS callstored_proc_multiple_statements_inside());
- D. Create a task for each SQL statement (e.
- E. resulting in task1. task2, etc) and string the series of SQL statements by having a control task calling task 1, task 2 sequentially.

Answer: C

NEW QUESTION 88

- (Exam Topic 1)

True or False: A Virtual Warehouse consumes Snowflake credits even when inactive.

- A. True
- B. False

Answer: B

Explanation:

Reference: <https://docs.snowflake.com/en/user-guide/warehouses-multicloud.html>

NEW QUESTION 91

- (Exam Topic 1)

True or false: it is best practice to define a clustering key on every table.

- A. True
- B. False

Answer: B

Explanation:

Reference: <https://dwgeek.com/how-to-create-snowflake-clustered-tables-examples.html/>

NEW QUESTION 95

- (Exam Topic 1)

Snowflake is designed for which type of workloads? (Choose two.)

- A. OLAP (Analytics) workloads
- B. OLTP (Transactional) workloads

- C. Concurrent workloads
- D. On-premise workloads

Answer: AC

Explanation:

Reference: <https://blog.couchbase.com/its-the-workload-stupid/>
<https://www.quora.com/Can-Snowflake-be-used-for-an-OLTP-system-or-is-it-only-best-suited-for-warehousing>

NEW QUESTION 100

- (Exam Topic 1)

True or False: Snowflake's data warehouse was built from the ground up for the cloud in lieu of using an existing database or a platform, like Hadoop, as a base.

- A. True
- B. False

Answer: B

Explanation:

Reference: <https://docs.snowflake.com/en/user-guide/intro-key-concepts.html>

NEW QUESTION 102

- (Exam Topic 1)

What is the maximum compressed row size in Snowflake?

- A. 8KB
- B. 16MB
- C. 50MB
- D. 4000GB

Answer: B

Explanation:

MAX size for compressed data for semi-structured data type is also 16 MB. That means if our table has a semi-structured data type column with 16MB data other columns will have NULL data.

NEW QUESTION 107

- (Exam Topic 1)

Which of the following statements about data sharing are true? choose 2 answers

- A. New objects created by a Data Provider are automatically shared with existing Data Consumers & Reader Accounts
- B. All database objects can be included In a shared database
- C. Reader Accounts are created and funded by Data Prowlers
- D. Shared databases are read-only

Answer: CD

NEW QUESTION 108

- (Exam Topic 2)

Which Snowflake technique can be used to improve the performance of a query?

- A. Clustering
- B. Indexing
- C. Fragmenting
- D. Using INDEX HINTS

Answer: A

Explanation:

<https://docs.snowflake.com/en/user-guide/tables-clustering-keys.html>

NEW QUESTION 113

- (Exam Topic 2)

True or False: Loading data into Snowflake requires that source data files be no larger than 16MB.

- A. True
- B. False

Answer: B

Explanation:

By default, COPY INTO location statements separate table data into a set of output files to take advantage of parallel operations. The maximum size for each file is set using the MAX_FILE_SIZE copy option. The default value is 16777216 (16 MB) but can be increased to accommodate larger files. The maximum file size supported is 5 GB for Amazon S3, Google Cloud Storage, or Microsoft Azure stages. To unload data to a single output file (at the potential cost of decreased performance), specify the SINGLE = true copy option in your statement. You can optionally specify a name for the file in the path.

NEW QUESTION 115

- (Exam Topic 2)

During periods of warehouse contention which parameter controls the maximum length of time a warehouse will hold a query for processing?

- A. STATEMENT_TIMEOUT__IN__SECONDS
- B. STATEMENT_QUEUED_TIMEOUT_IN_SECONDS
- C. MAX_CONCURRENCY LEVEL
- D. QUERY_TIMEOUT_IN_SECONDS

Answer: B

Explanation:

The parameter STATEMENT_QUEUED_TIMEOUT_IN_SECONDS

sets the limit for a query to wait in

the queue in order to get its chance of running on the warehouse. The query will quit after reaching this limit. By default, the value of this parameter is 0 which mean the queries will wait indefinitely in the waiting queue

<https://community.snowflake.com/s/article/Warehouse-Concurrency-and-Statement-Timeout-Parameters#:~:text=>

NEW QUESTION 116

- (Exam Topic 2)

Which statement about billing applies to Snowflake credits?

- A. Credits are billed per-minute with a 60-minute minimum
- B. Credits are used to pay for cloud data storage usage
- C. Credits are consumed based on the number of credits billed for each hour that a warehouse runs
- D. Credits are consumed based on the warehouse size and the time the warehouse is running

Answer: D

Explanation:

Snowflake credits are used to pay for the consumption of resources on Snowflake. A Snowflake credit is a unit of measure, and it is consumed only when a customer is using resources, such as when a virtual warehouse is running, the cloud services layer is performing work, or serverless features are used.

<https://docs.snowflake.com/en/user-guide/what-are-credits.html>

NEW QUESTION 119

- (Exam Topic 2)

What feature can be used to reorganize a very large table on one or more columns?

- A. Micro-partitions
- B. Clustering keys
- C. Key partitions
- D. Clustered partitions

Answer: B

Explanation:

<https://docs.snowflake.com/en/user-guide/tables-clustering-keys.html>

NEW QUESTION 120

- (Exam Topic 2)

A user has 10 files in a stage containing new customer data. The ingest operation completes with no errors, using the following command:

`COPY INTO my__table FROM @my__stage;`

The next day the user adds 10 files to the stage so that now the stage contains a mixture of new customer data and updates to the previous data. The user did not remove the 10 original files.

If the user runs the same copy into command what will happen?

- A. All data from all of the files on the stage will be appended to the table
- B. Only data about new customers from the new files will be appended to the table
- C. The operation will fail with the error uncertain files in stage.
- D. All data from only the newly-added files will be appended to the table.

Answer: A

NEW QUESTION 124

- (Exam Topic 2)

True or False: A Virtual Warehouse can be resized while suspended.

- A. True
- B. False

Answer: A

Explanation:

Reference:

<https://docs.snowflake.com/en/user-guide/warehouses-tasks.html#effects-of-resizing-a-suspended-warehouse>

NEW QUESTION 126

- (Exam Topic 2)

True or False: It is possible for a user to run a query against the query result cache without requiring an active Warehouse.

- A. True
- B. False

Answer: A

Explanation:

Query result cache is all about fetching the data from cloud services layer and saving the cost by not running the virtual warehouse.

NEW QUESTION 130

- (Exam Topic 2)

The fail-safe retention period is how many days?

- A. 1 day
- B. 7 days
- C. 45 days
- D. 90 days

Answer: B

Explanation:

Reference: <https://docs.snowflake.com/en/user-guide/data-failsafe.html>

NEW QUESTION 131

- (Exam Topic 2)

Which copy INTO command outputs the data into one file?

- A. SINGLE=TRUE
- B. MAX_FILE_NUMBER=1
- C. FILE_NUMBER=1
- D. MULTIPLE=FAISE

Answer: A

NEW QUESTION 132

- (Exam Topic 2)

A company's security audit requires generating a report listing all Snowflake logins (e.g.. date and user) within the last 90 days. Which of the following statements will return the required information?

- A. SELECT LAST_SUCCESS_LOGIN, LOGIN_NAME FROM ACCOUNT_USAGE.USERS;
- B. SELECT EVENT_TIMESTAMP, USER_NAME FROM table(information_schema.login_history_by_user())
- C. SELECT EVENT_TIMESTAMP, USER_NAME FROM ACCOUNT_USAGE.ACCESS_HISTORY;
- D. SELECT EVENT_TIMESTAMP, USER_NAME FROM ACCOUNT_USAGE.LOGIN_HISTORY;

Answer: D

NEW QUESTION 136

- (Exam Topic 2)

A sales table FCT_SALES has 100 million records. The following Query was executed

SELECT COUNT (1) FROM FCT___SALES;

How did Snowflake fulfill this query?

- A. Query against the result set cache
- B. Query against a virtual warehouse cache
- C. Query against the most-recently created micro-partition
- D. Query against the metadata excite

Answer: D

NEW QUESTION 140

- (Exam Topic 2)

Which of the following conditions must be met in order to return results from the results cache? (Select TWO).

- A. The user has the appropriate privileges on the objects associated with the query
- B. Micro-partitions have been reclustered since the query was last run
- C. The new query is run using the same virtual warehouse as the previous query
- D. The query includes a User Defined Function (UDF)
- E. The query has been run within 24 hours of the previously-run query

Answer: AE

NEW QUESTION 143

- (Exam Topic 2)

Which Snowflake objects track DML changes made to tables, like inserts, updates, and deletes?

- A. Pipes
- B. Streams
- C. Tasks
- D. Procedures

Answer: B

Explanation:

[https://dataterrain.com/how-to-change-tracking-using-table-streams-in-snowflake/#:~:text=A%20stream%20is%](https://dataterrain.com/how-to-change-tracking-using-table-streams-in-snowflake/#:~:text=A%20stream%20is%20)

NEW QUESTION 147

- (Exam Topic 2)

Which of the following describes external functions in Snowflake?

- A. They are a type of User-defined Function (UDF).
- B. They contain their own SQL code.
- C. They call code that is stored inside of Snowflake.
- D. They can return multiple rows for each row received

Answer: A

Explanation:

External functions are user-defined functions that are stored and executed outside of Snowflake.

External functions make it easier to access external API services such as geocoders, machine learning models, and other custom code running outside of Snowflake. This feature eliminates the need to export and reimport data when using third-party services, significantly simplifying your data pipelines.

<https://docs.snowflake.com/en/sql-reference/external-functions.html#:~:text=External%20functions%20are%20>

NEW QUESTION 149

- (Exam Topic 2)

What happens when a virtual warehouse is resized?

- A. When increasing the size of an active warehouse the compute resource for all running and queued queries on the warehouse are affected
- B. When reducing the size of a warehouse the compute resources are removed only when they are no longer being used to execute any current statements.
- C. The warehouse will be suspended while the new compute resource is provisioned and will resume automatically once provisioning is complete.
- D. Users who are trying to use the warehouse will receive an error message until the resizing is complete

Answer: B

NEW QUESTION 153

- (Exam Topic 2)

Which of the following objects can be shared through secure data sharing?

- A. Masking policy
- B. Stored procedure
- C. Task
- D. External table

Answer: D

Explanation:

Secure Data Sharing enables sharing selected objects in a database in your account with other Snowflake accounts. The following Snowflake database objects can be shared:

- > Tables
- > External tables
- > Secure views
- > Secure materialized views
- > Secure UDFs

Snowflake enables the sharing of databases through shares, which are created by data providers and “imported” by data consumers.

<https://docs.snowflake.com/en/user-guide/data-sharing-intro.html#:~:text=Secure%20Data%20Sharing%20enab>

NEW QUESTION 157

- (Exam Topic 2)

When reviewing a query profile, what is a symptom that a query is too large to fit into the memory?

- A. A single join node uses more than 50% of the query time
- B. Partitions scanned is equal to partitions total
- C. An AggregateOperator node is present
- D. The query is spilling to remote storage

Answer: D

NEW QUESTION 162

- (Exam Topic 2)

What data is stored in the Snowflake storage layer? (Select TWO).

- A. Snowflake parameters
- B. Micro-partitions

- C. Query history
- D. Persisted query results
- E. Standard and secure view results

Answer: BD

NEW QUESTION 165

- (Exam Topic 2)

Which of the following commands cannot be used within a reader account?

- A. CREATE SHARE
- B. ALTER WAREHOUSE
- C. DROP ROLE
- D. SHOW SCHEMAS
- E. DESCRIBE TABLE

Answer: B

Explanation:

A reader account is intended primarily for querying data shared by the provider of the account. Adding new data to the account and/or updating shared data in the account is not supported. Changing the configuration of virtual warehouses is also not permitted as those resources are owned and managed by the provider of the account which is sharing the data.

NEW QUESTION 166

- (Exam Topic 2)

What are the default Time Travel and Fail-safe retention periods for transient tables?

- A. Time Travel - 1 da
- B. Fail-safe - 1 day
- C. Time Travel - 0 day
- D. Fail-safe - 1 day
- E. Time Travel - 1 da
- F. Fail-safe - 0 days
- G. Transient tables are retained in neither Fail-safe nor Time Travel

Answer: C

Explanation:

<https://docs.snowflake.com/en/user-guide/data-cdp-storage-costs.html#:~:text=Temporary%20and%20Transient>

NEW QUESTION 170

- (Exam Topic 2)

Which command can be used to stage local files from which Snowflake interface?

- A. SnowSQL
- B. Snowflake classic web interface (UI)
- C. Snowsight
- D. .NET driver

Answer: A

Explanation:

<https://docs.snowflake.com/en/user-guide/snowsql-use.html>

NEW QUESTION 173

- (Exam Topic 2)

Query compilation occurs in which architecture layer of the Snowflake Cloud Data Platform?

- A. Compute layer
- B. Storage layer
- C. Cloud infrastructure layer
- D. Cloud services layer

Answer: A

Explanation:

For query execution, Snowflake uses the Virtual Warehouse. The query processing layer is separated from the disk storage layer in the Snowflake data architecture. You can use the data from the storage layer to run queries in this layer

<https://www.projectpro.io/article/snowflake-architecture-what-does-snowflake-do/556#:~:text=Query%20Proce>

NEW QUESTION 174

- (Exam Topic 2)

What Snowflake role must be granted for a user to create and manage accounts?

- A. ACCOUNTADMIN
- B. ORGADMIN
- C. SECURITYADMIN

D. SYSADMIN

Answer: A

Explanation:

<https://docs.snowflake.com/en/user-guide/security-access-control-considerations.html>

NEW QUESTION 175

- (Exam Topic 2)

What is the default character set used when loading CSV files into Snowflake?

- A. UTF-8
- B. UTF-16
- C. ISO S859-1
- D. ANSI_X3.A

Answer: A

Explanation:

[#### NEW QUESTION 179](https://docs.snowflake.com/en/user-guide/intro-summary-loading.html#:~:text=For%20delimited%20files%20(,text=For%20delimited%20files%20(For delimited files (CSV, TSV, etc.), the default character set is UTF-8. To use any other characters sets, you must explicitly specify the encoding to use for loading. For the list of supported character sets, see Supported Character Sets for Delimited Files (in this topic).</p></div><div data-bbox=)

- (Exam Topic 2)

Which of the following describes how clustering keys work in Snowflake?

- A. Clustering keys update the micro-partitions in place with a full sort, and impact the DML operations.
- B. Clustering keys sort the designated columns over time, without blocking DML operations
- C. Clustering keys create a distributed, parallel data structure of pointers to a table's rows and columns
- D. Clustering keys establish a hashed key on each node of a virtual warehouse to optimize joins at run-time

Answer: B

NEW QUESTION 182

- (Exam Topic 2)

Which is the MINIMUM required Snowflake edition that a user must have if they want to use AWS/Azure Privatelink or Google Cloud Private Service Connect?

- A. Standard
- B. Premium
- C. Enterprise
- D. Business Critical

Answer: D

Explanation:

<https://docs.snowflake.com/en/user-guide/privatelink-azure.html>

NEW QUESTION 186

- (Exam Topic 2)

How would you determine the size of the virtual warehouse used for a task?

- A. Root task may be executed concurrently (i.
- B. multiple instances), it is recommended to leave some margins in the execution window to avoid missing instances of execution
- C. Querying (select) the size of the stream content would help determine the warehouse siz
- D. For example, if querying large stream content, use a larger warehouse size
- E. If using the stored procedure to execute multiple SQL statements, it's best to test run the stored procedure separately to size the compute resource first
- F. Since task infrastructure is based on running the task body on schedule, it's recommended to configure the virtual warehouse for automatic concurrency handling using Multi-cluster warehouse (MCW) to match the task schedule

Answer: C

NEW QUESTION 189

- (Exam Topic 2)

A user is loading JSON documents composed of a huge array containing multiple records into Snowflake. The user enables the strip outer_array file format option. What does the STRIP_OUTER_ARRAY file format do?

- A. It removes the last element of the outer array.
- B. It removes the outer array structure and loads the records into separate table rows,
- C. It removes the trailing spaces in the last element of the outer array and loads the records into separate table columns
- D. It removes the NULL elements from the JSON object eliminating invalid data and enables the ability to load the records

Answer: B

Explanation:

Data Size Limitations

The VARIANT data type imposes a 16 MB size limit on individual rows.

For some semi-structured data formats (e.g. JSON), data sets are frequently a simple concatenation of multiple documents. The JSON output from some software is composed of a single huge array containing multiple records. There is no need to separate the documents with line breaks or commas, though both are supported.

If the data exceeds 16 MB, enable the STRIP_OUTER_ARRAY file format option for the COPY INTO

<table> command to remove the outer array structure and load the records into separate table rows:

copy into <table> from @~/<file>.json

file_format = (type = 'JSON' strip_outer_array = true); <https://docs.snowflake.com/en/user-guide/semistructured-considerations.html>

NEW QUESTION 191

- (Exam Topic 2)

Which Snowflake partner specializes in data catalog solutions?

- A. Alation
- B. DataRobot
- C. dbt
- D. Tableau

Answer: A

Explanation:

Alation provides Data Cataloging functionality. They state they are the 'One Place to Find, Understand, & Govern Data Across an Enterprise.

<https://docs.snowflake.com/en/user-guide/ecosystem-all.html>

NEW QUESTION 193

- (Exam Topic 2)

A company strongly encourages all Snowflake users to self-enroll in Snowflake's default Multi-Factor Authentication (MFA) service to provide increased login security for users connecting to Snowflake.

Which application will the Snowflake users need to install on their devices in order to connect with MFA?

- A. Okta Verify
- B. Duo Mobile
- C. Microsoft Authenticator
- D. Google Authenticator

Answer: B

Explanation:

<https://docs.snowflake.com/en/user-guide/security-mfa.html>

NEW QUESTION 196

- (Exam Topic 2)

What are value types that a VARIANT column can store? (Select TWO)

- A. STRUCT
- B. OBJECT
- C. BINARY
- D. ARRAY
- E. CLOB

Answer: BD

Explanation:

Characteristics of a VARIANT

A VARIANT can store a value of any other type, including OBJECT and ARRAY. The maximum length of a VARIANT is 16 MB.

<https://docs.snowflake.com/en/sql-reference/data-types-semistructured.html#:~:text=VARIANT-,Characteristics>

NEW QUESTION 200

- (Exam Topic 2)

Which data type can be used to store geospatial data in Snowflake?

- A. Variant
- B. Object
- C. Geometry
- D. Geography

Answer: D

Explanation:

<https://docs.snowflake.com/en/sql-reference/data-types-geospatial.html#:~:text=have%20SRID%3D4326.-,Geos>

NEW QUESTION 204

- (Exam Topic 2)

When is the result set cache no longer available? (Select TWO)

- A. When another warehouse is used to execute the query
- B. When another user executes the query
- C. When the underlying data has changed
- D. When the warehouse used to execute the query is suspended

E. When it has been 24 hours since the last query

Answer: CE

NEW QUESTION 207

- (Exam Topic 2)

What tasks can be completed using the copy command? (Select TWO)

- A. Columns can be aggregated
- B. Columns can be joined with an existing table
- C. Columns can be reordered
- D. Columns can be omitted
- E. Data can be loaded without the need to spin up a virtual warehouse

Answer: CD

NEW QUESTION 210

- (Exam Topic 3)

Which command should be used to load data from a file, located in an external stage, into a table in Snowflake?

- A. INSERT
- B. PUT
- C. GET
- D. COPY

Answer: D

NEW QUESTION 213

- (Exam Topic 3)

Which of the following is an example of an operation that can be completed without requiring compute, assuming no queries have been executed previously?

- A. SELECT SUM (ORDER_AMT) FROM SALES;
- B. SELECT AVG(ORDER_QTY) FROM SALES;
- C. SELECT MIN(ORDER_AMT) FROM SALES;
- D. SELECT ORDER_AMT * ORDER_QTY FROM SALES;

Answer: B

NEW QUESTION 215

- (Exam Topic 3)

Which of the following features, associated with Continuous Data Protection (CDP), require additional Snowflake-provided data storage? (Choose two.)

- A. Tri-Secret Secure
- B. Time Travel
- C. Fail-safe
- D. Data encryption
- E. External stages

Answer: BC

NEW QUESTION 216

- (Exam Topic 3)

What is the recommended compressed file size range for continuous data loads using Snowpipe?

- A. 8-16 MB
- B. 16-24 MB
- C. 10-99 MB
- D. 100-250 MB

Answer: B

NEW QUESTION 217

- (Exam Topic 3)

A single user of a virtual warehouse has set the warehouse to auto-resume and auto-suspend after 10 minutes. The warehouse is currently suspended and the user performs the following actions:

- * 1. Runs a query that takes 3 minutes to complete
- * 2. Leaves for 15 minutes
- * 3. Returns and runs a query that takes 10 seconds to complete
- * 4. Manually suspends the warehouse as soon as the last query was completed

When the user returns, how much billable compute time will have been consumed?

- A. 4 minutes
- B. 10 minutes
- C. 14 minutes
- D. 24 minutes

Answer: C

NEW QUESTION 219

- (Exam Topic 3)

What are the responsibilities of Snowflake's Cloud Service layer? (Choose three.)

- A. Authentication
- B. Resource management
- C. Virtual warehouse caching
- D. Query parsing and optimization
- E. Query execution
- F. Physical storage of micro-partitions

Answer: ADE

NEW QUESTION 223

- (Exam Topic 3)

What is the minimum Snowflake edition that has column-level security enabled?

- A. Standard
- B. Enterprise
- C. Business Critical
- D. Virtual Private Snowflake

Answer: B

NEW QUESTION 226

- (Exam Topic 3)

Snowflake supports the use of external stages with which cloud platforms? (Choose three.)

- A. Amazon Web Services
- B. Docker
- C. IBM Cloud
- D. Microsoft Azure Cloud
- E. Google Cloud Platform
- F. Oracle Cloud

Answer: BDE

NEW QUESTION 227

- (Exam Topic 3)

Which of the following activities consume virtual warehouse credits in the Snowflake environment? (Choose two.)

- A. Caching query results
- B. Running EXPLAIN and SHOW commands
- C. Cloning a database
- D. Running a custom query
- E. Running COPY commands

Answer: AD

NEW QUESTION 231

- (Exam Topic 3)

What effect does WAIT_FOR_COMPLETION = TRUE have when running an ALTER WAREHOUSE command and changing the warehouse size?

- A. The warehouse size does not change until all queries currently running in the warehouse have completed.
- B. The warehouse size does not change until all queries currently in the warehouse queue have completed.
- C. The warehouse size does not change until the warehouse is suspended and restarted.
- D. It does not return from the command until the warehouse has finished changing its size.

Answer: D

NEW QUESTION 235

- (Exam Topic 3)

The bulk data load history that is available upon completion of the COPY statement is stored where and for how long?

- A. In the metadata of the target table for 14 days
- B. In the metadata of the pipe for 14 days
- C. In the metadata of the target table for 64 days
- D. In the metadata of the pipe for 64 days

Answer: A

NEW QUESTION 237

- (Exam Topic 3)

How long is the Fail-safe period for temporary and transient tables?

- A. There is no Fail-safe period for these tables.

- B. 1 day
- C. 7 days
- D. 31 days
- E. 90 days

Answer: A

Explanation:

Reference: <https://docs.snowflake.com/en/user-guide/tables-temp-transient.html>

NEW QUESTION 241

- (Exam Topic 3)

Which query profile statistics help determine if efficient pruning is occurring? (Choose two.)

- A. Bytes sent over network
- B. Percentage scanned from cache
- C. Partitions total
- D. Bytes spilled to local storage
- E. Partitions scanned

Answer: BE

NEW QUESTION 242

- (Exam Topic 3)

The first user assigned to a new account, ACCOUNTADMIN, should create at least one additional user with which administrative privilege?

- A. USERADMIN
- B. PUBLIC
- C. ORGADMIN
- D. SYSADMIN

Answer: D

NEW QUESTION 246

- (Exam Topic 3)

If 3 size Small virtual warehouse is made up of two servers, how many servers make up a Large warehouse?

- A. 4
- B. 8
- C. 16
- D. 32

Answer: B

Explanation:

Size specifies the amount of compute resources available per cluster in a warehouse. Snowflake supports the following warehouse sizes:

Warehouse Size	Credits / Hour	Credits / Second	Notes
X-Small	1	0.0003	Default size for warehouses created using <code>CREATE WAREHOUSE</code> .
Small	2	0.0006	
Medium	4	0.0011	
Large	8	0.0022	
X-Large	16	0.0044	Default for warehouses created in the web interface.
2X-Large	32	0.0089	
3X-Large	64	0.0178	
4X-Large	128	0.0356	
5X-Large	256	0.0711	Preview feature.
6X-Large	512	0.1422	Preview feature.

<https://docs.snowflake.com/en/user-guide/warehouses-overview.html>

NEW QUESTION 250

- (Exam Topic 3)

How can a row access policy be applied to a table or a view? (Choose two.)

- A. Within the policy DDL
- B. Within the create table or create view DDL
- C. By future APPLY for all objects in a schema

- D. Within a control table
- E. Using the command ALTER <object> ADD ROW ACCESS POLICY <policy>;

Answer: BD

NEW QUESTION 252

- (Exam Topic 3)

Which Snowflake objects can be shared with other Snowflake accounts? (Choose three.)

- A. Schemas
- B. Roles
- C. Secure Views
- D. Stored Procedures
- E. Tables
- F. Secure User-Defined Functions (UDFs)

Answer: ABF

NEW QUESTION 253

- (Exam Topic 3)

When publishing a Snowflake Data Marketplace listing into a remote region what should be taken into consideration? (Choose two.)

- A. There is no need to have a Snowflake account in the target region, a share will be created for each user.
- B. The listing is replicated into all selected regions automatically, the data is not.
- C. The user must have the ORGADMIN role available in at least one account to link accounts for replication.
- D. Shares attached to listings in remote regions can be viewed from any account in an organization.
- E. For a standard listing the user can wait until the first customer requests the data before replicating it to the target region.

Answer: AC

NEW QUESTION 256

- (Exam Topic 3)

What actions will prevent leveraging of the ResultSet cache? (Choose two.)

- A. Removing a column from the query SELECT list
- B. Stopping the virtual warehouse that the query is running against
- C. Clustering of the data used by the query
- D. Executing the RESULTS_SCAN() table function
- E. Changing a column that is not in the cached query

Answer: AD

NEW QUESTION 257

- (Exam Topic 3)

What is cached during a query on a virtual warehouse?

- A. All columns in a micro-partition
- B. Any columns accessed during the query
- C. The columns in the result set of the query
- D. All rows accessed during the query

Answer: B

NEW QUESTION 259

- (Exam Topic 3)

Which of the following is a data tokenization integration partner?

- A. Protegrity
- B. Tableau
- C. DBeaver
- D. SAP

Answer: A

NEW QUESTION 263

- (Exam Topic 3)

A company needs to allow some users to see Personally Identifiable Information (PII) while limiting other users from seeing the full value of the PII. Which Snowflake feature will support this?

- A. Row access policies
- B. Data masking policies
- C. Data encryption
- D. Role based access control

Answer: B

NEW QUESTION 267

- (Exam Topic 3)

Which tasks are performed in the Snowflake Cloud Services layer? (Choose two.)

- A. Management of metadata
- B. Computing the data
- C. Maintaining Availability Zones
- D. Infrastructure security
- E. Parsing and optimizing queries

Answer: AE

NEW QUESTION 269

- (Exam Topic 3)

Which statement describes how Snowflake supports reader accounts?

- A. A reader account can consume data from the provider account that created it and combine it with its own data.
- B. A consumer needs to become a licensed Snowflake customer as data sharing is only supported between Snowflake accounts.
- C. The users in a reader account can query data that has been shared with the reader account and can perform DML tasks.
- D. The SHOW MANAGED ACCOUNTS command will view all the reader accounts that have been created for an account.

Answer: C

NEW QUESTION 270

- (Exam Topic 3)

Network policies can be applied to which of the following Snowflake objects? (Choose two.)

- A. Roles
- B. Databases
- C. Warehouses
- D. Users
- E. Accounts

Answer: AD

NEW QUESTION 274

- (Exam Topic 3)

A Snowflake user executed a query and received the results. Another user executed the same query 4 hours later. The data had not changed. What will occur?

- A. No virtual warehouse will be used, data will be read from the result cache.
- B. No virtual warehouse will be used, data will be read from the local disk cache.
- C. The default virtual warehouse will be used to read all data.
- D. The virtual warehouse that is defined at the session level will be used to read all data.

Answer: A

NEW QUESTION 278

- (Exam Topic 3)

Which of the following can be used when unloading data from Snowflake? (Choose two.)

- A. When unloading semi-structured data, it is recommended that the STRIP_OUTER_ARRAY option be used.
- B. Use the ENCODING file format option to change the encoding from the default UTF-8.
- C. The OBJECT_CONSTRUCT function can be used to convert relational data to semi-structured data.
- D. By using the SINGLE = TRUE parameter, a single file up to 5 GB in size can be exported to the storage layer.
- E. Use the PARSE_JSON function to ensure structured data will be unloaded into the VARIANT data type.

Answer: AD

NEW QUESTION 279

- (Exam Topic 3)

Which Snowflake SQL statement would be used to determine which users and roles have access to a role called MY_ROLE?

- A. SHOW GRANTS OF ROLE MY_ROLE
- B. SHOW GRANTS TO ROLE MY_ROLE
- C. SHOW GRANTS FOR ROLE MY_ROLE
- D. SHOW GRANTS ON ROLE MY_ROLE

Answer: B

NEW QUESTION 283

- (Exam Topic 3)

What is an advantage of using an explain plan instead of the query profiler to evaluate the performance of a query?

- A. The explain plan output is available graphically.
- B. An explain plan can be used to conduct performance analysis without executing a query.
- C. An explain plan will handle queries with temporary tables and the query profiler will not.

D. An explain plan's output will display automatic data skew optimization information.

Answer: B

NEW QUESTION 285

- (Exam Topic 3)

A user has a standard multi-cluster warehouse auto-scaling policy in place. Which condition will trigger a cluster to shut-down?

- A. When after 2-3 consecutive checks the system determines that the load on the most-loaded cluster could be redistributed.
- B. When after 5-6 consecutive checks the system determines that the load on the most-loaded cluster could be redistributed.
- C. When after 5-6 consecutive checks the system determines that the load on the least-loaded cluster could be redistributed.
- D. When after 2-3 consecutive checks the system determines that the load on the least-loaded cluster could be redistributed.

Answer: D

NEW QUESTION 289

- (Exam Topic 3)

Which statements reflect key functionalities of a Snowflake Data Exchange? (Choose two.)

- A. If an account is enrolled with a Data Exchange, it will lose its access to the Snowflake Marketplace.
- B. A Data Exchange allows groups of accounts to share data privately among the accounts.
- C. A Data Exchange allows accounts to share data with third, non-Snowflake parties.
- D. Data Exchange functionality is available by default in accounts using the Enterprise edition or higher.
- E. The sharing of data in a Data Exchange is bidirectional.
- F. An account can be a provider for some datasets and a consumer for others.

Answer: B

NEW QUESTION 290

- (Exam Topic 3)

A running virtual warehouse is suspended.

What is the MINIMUM amount of time that the warehouse will incur charges for when it is restarted?

- A. 1 second
- B. 60 seconds
- C. 5 minutes
- D. 60 minutes

Answer: B

NEW QUESTION 294

- (Exam Topic 3)

Which services does the Snowflake Cloud Services layer manage? (Choose two.)

- A. Compute resources
- B. Query execution
- C. Authentication
- D. Data storage
- E. Metadata

Answer: CE

NEW QUESTION 296

- (Exam Topic 3)

By default, which Snowflake role is required to create a share?

- A. ORGADMIN
- B. SECURITYADMIN
- C. SHAREADMIN
- D. ACCOUNTADMIN

Answer: C

NEW QUESTION 301

- (Exam Topic 3)

Which data types are supported by Snowflake when using semi-structured data? (Choose two.)

- A. VARIANT
- B. VARRAY
- C. STRUCT
- D. ARRAY
- E. QUEUE

Answer: AD

NEW QUESTION 304

- (Exam Topic 3)

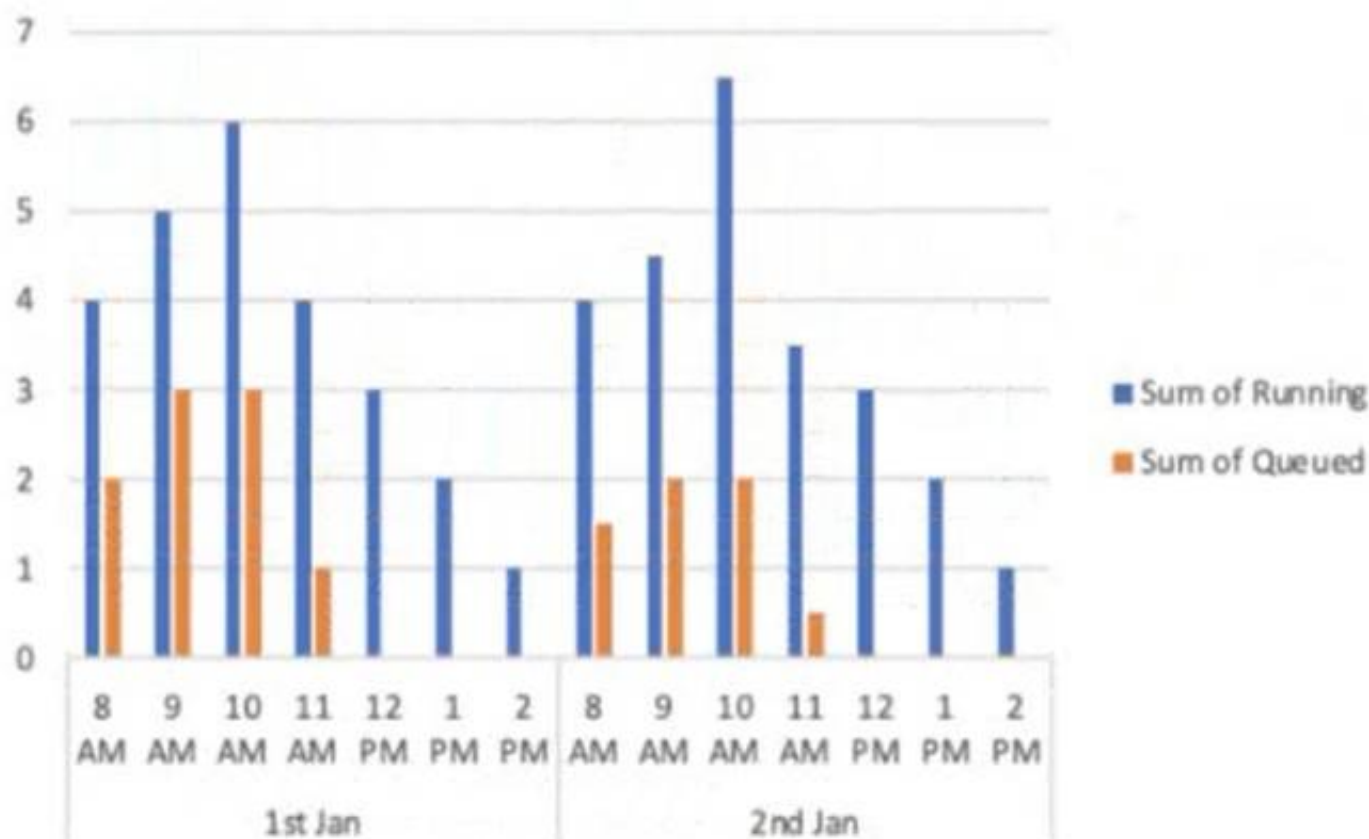
A virtual warehouse is created using the following command:

Create warehouse my_WH with warehouse_size = MEDIUM min_cluster_count = 1

max_cluster_count = 1

auto_suspend = 60 auto_resume = true;

The image below is a graphical representation of the warehouse utilization across two days.



What action should be taken to address this situation?

- A. Increase the warehouse size from Medium to 2XL.
- B. Increase the value for the parameter MAX_CONCURRENCY_LEVEL.
- C. Configure the warehouse to a multi-cluster warehouse.
- D. Lower the value of the parameter STATEMENT_QUEUED_TIMEOUT_IN_SECONDS.

Answer: B

NEW QUESTION 309

- (Exam Topic 3)

Which of the following significantly improves the performance of selective point lookup queries on a table?

- A. Clustering
- B. Materialized Views
- C. Zero-copy Cloning
- D. Search Optimization Service

Answer: A

NEW QUESTION 313

- (Exam Topic 3)

A Snowflake Administrator needs to ensure that sensitive corporate data in Snowflake tables is not visible to end users, but is partially visible to functional managers.

How can this requirement be met?

- A. Use data encryption.
- B. Use dynamic data masking.
- C. Use secure materialized views.
- D. Revoke all roles for functional managers and end users.

Answer: B

NEW QUESTION 314

- (Exam Topic 3)

What internal stages are available in Snowflake? (Choose three.)

- A. Schema stage
- B. Named stage
- C. User stage
- D. Stream stage
- E. Table stage
- F. Database stage

Answer: ABE

NEW QUESTION 319

- (Exam Topic 3)

True or False: Snowpipe via REST API can only reference External Stages as source.

- A. True
- B. False

Answer: B

Explanation:

Reference: <https://community.snowflake.com/s/article/Making-Transient-table-by-Default>

NEW QUESTION 322

- (Exam Topic 3)

What privilege should a user be granted to change permissions for new objects in a managed access schema?

- A. Grant the OWNERSHIP privilege on the schema.
- B. Grant the OWNERSHIP privilege on the database.
- C. Grant the MANAGE GRANTS global privilege.
- D. Grant ALL privileges on the schema.

Answer: C

NEW QUESTION 323

- (Exam Topic 3)

Which file formats are supported for unloading data from Snowflake? (Choose two.)

- A. Avro
- B. JSON
- C. ORC
- D. XML
- E. Delimited (CSV, TSV, etc.)

Answer: CE

Explanation:

Reference:

[https://docs.snowflake.com/en/user-guide/data-unload-prepare.html#:~:text=Supported%20File%20Formats,-Th%20comma%20\(i.e.%20CSV\).&text=File%20format%20options%20specify%20the,the%20format%20of%20th](https://docs.snowflake.com/en/user-guide/data-unload-prepare.html#:~:text=Supported%20File%20Formats,-Th%20comma%20(i.e.%20CSV).&text=File%20format%20options%20specify%20the,the%20format%20of%20th)

NEW QUESTION 324

- (Exam Topic 3)

What are advantages clones have over tables created with CREATE TABLE AS SELECT statement? (Choose two.)

- A. The clone always stays in sync with the original table.
- B. The clone has better query performance.
- C. The clone is created almost instantly.
- D. The clone will have time travel history from the original table.
- E. The clone saves space by not duplicating storage.

Answer: CE

NEW QUESTION 326

- (Exam Topic 3)

Which of the following are best practices for loading data into Snowflake? (Choose three.)

- A. Aim to produce data files that are between 100 MB and 250 MB in size, compressed.
- B. Load data from files in a cloud storage service in a different region or cloud platform from the service or region containing the Snowflake account, to save on cost.
- C. Enclose fields that contain delimiter characters in single or double quotes.
- D. Split large files into a greater number of smaller files to distribute the load among the compute resources in an active warehouse.
- E. When planning which warehouse(s) to use for data loading, start with the largest warehouse possible.
- F. Partition the staged data into large folders with random paths, allowing Snowflake to determine the bestway to load each file.

Answer: BCE

NEW QUESTION 327

- (Exam Topic 3)

Which Snowflake layer is always leveraged when accessing a query from the result cache?

- A. Metadata
- B. Data Storage
- C. Compute
- D. Cloud Services

Answer: D

NEW QUESTION 329

- (Exam Topic 3)

Which URL type allows users to access unstructured data without authenticating into Snowflake or passing an authorization token?

- A. Pre-signed URL
- B. Scoped URL
- C. Signed URL
- D. File URL

Answer: C

NEW QUESTION 332

- (Exam Topic 3)

What occurs when a pipe is recreated using the CREATE OR REPLACE PIPE command?

- A. The Pipe load history is reset to empty.
- B. The REFRESH command is executed.
- C. The stage will be purged.
- D. The destination table is truncated.

Answer: B

NEW QUESTION 335

- (Exam Topic 3)

Which commands should be used to grant the privilege allowing a role to select data from all current tables and any tables that will be created later in a schema? (Choose two.)

- A. grant USAGE on all tables in schema DB1.SCHEMA to role MYROLE;
- B. grant USAGE on future tables in schema DB1.SCHEMA to role MYROLE;
- C. grant SELECT on all tables in schema DB1.SCHEMA to role MYROLE;
- D. grant SELECT on future tables in schema DB1.SCHEMA to role MYROLE;
- E. grant SELECT on all tables in database DB1 to role MYROLE;
- F. grant SELECT on future tables in database DB1 to role MYROLE;

Answer: CD

NEW QUESTION 340

- (Exam Topic 3)

Which of the following objects are contained within a schema? (Choose two.)

- A. Role
- B. Stream
- C. Warehouse
- D. External table
- E. User
- F. Share

Answer: CD

NEW QUESTION 344

- (Exam Topic 3)

Which snowflake objects will incur both storage and cloud compute charges? (Select TWO)

- A. Materialized view
- B. Sequence
- C. Secure view
- D. Transient table
- E. Clustered table

Answer: DE

NEW QUESTION 347

- (Exam Topic 3)

What types of data listings are available in the Snowflake Data Marketplace? (Choose two.)

- A. Reader
- B. Consumer
- C. Vendor
- D. Standard
- E. Personalized

Answer: DE

NEW QUESTION 349

- (Exam Topic 3)

For non-materialized views, what column in Information Schema and Account Usage identifies whether a view is secure or not?

- A. CHECK_OPTION

- B. IS_SECURE
- C. IS_UPDATEABLE
- D. TABLE_NAME

Answer: B

NEW QUESTION 351

- (Exam Topic 3)

Data storage for individual tables can be monitored using which commands and/or objects? (Choose two.)

- A. SHOW STORAGE BY TABLE;
- B. SHOW TABLES;
- C. Information Schema -> TABLE_HISTORY
- D. Information Schema -> TABLE_FUNCTION
- E. Information Schema -> TABLE_STORAGE_METRICS

Answer: AE

NEW QUESTION 356

- (Exam Topic 3)

Using variables in Snowflake is denoted by using which SQL character?

- A. @
- B. &
- C. \$
- D. #

Answer: C

NEW QUESTION 358

.....

THANKS FOR TRYING THE DEMO OF OUR PRODUCT

Visit Our Site to Purchase the Full Set of Actual SnowPro-Core Exam Questions With Answers.

We Also Provide Practice Exam Software That Simulates Real Exam Environment And Has Many Self-Assessment Features. Order the SnowPro-Core Product From:

<https://www.2passeasy.com/dumps/SnowPro-Core/>

Money Back Guarantee

SnowPro-Core Practice Exam Features:

- * SnowPro-Core Questions and Answers Updated Frequently
- * SnowPro-Core Practice Questions Verified by Expert Senior Certified Staff
- * SnowPro-Core Most Realistic Questions that Guarantee you a Pass on Your FirstTry
- * SnowPro-Core Practice Test Questions in Multiple Choice Formats and Updatesfor 1 Year