

# Exam Questions SnowPro-Core

SnowPro Core Certification Exam

<https://www.2passeasy.com/dumps/SnowPro-Core/>



#### NEW QUESTION 1

- (Exam Topic 1)

Select the three types of tables that exist within Snowflake. Choose 3 answers

- A. Temporary
- B. Transient
- C. Provisioned
- D. Permanent

**Answer:** ABD

#### Explanation:

Reference: <https://community.snowflake.com/s/article/Making-Transient-table-by-Default>

#### NEW QUESTION 2

- (Exam Topic 1)

Which of the following are options when creating a Virtual Warehouse?

- A. Auto-suspend
- B. Auto-resume
- C. Local SSD size
- D. User count

**Answer:** AB

#### NEW QUESTION 3

- (Exam Topic 1)

True or False: Snowflake charges a premium for storing semi-structured data.

- A. True
- B. False

**Answer:** B

#### Explanation:

Reference:

<https://snowflakecommunity.force.com/s/question/0D50Z00008ckwNuSAI/does-snowflakecharges- premium-for-storing-semi-structured-data>

#### NEW QUESTION 4

- (Exam Topic 1)

What services does Snowflake automatically provide for customer that they may have been responsible for with their on premise system? Select all the below that apply.

- A. Installing and configuring hardware
- B. Patching software
- C. Physical security
- D. Maintaining metadata and statistics

**Answer:** ABD

#### NEW QUESTION 5

- (Exam Topic 1)

What is the most granular object that the Time Travel retention period can be defined on? Select one.

- A. Account
- B. Database
- C. Schema
- D. Table

**Answer:** D

#### Explanation:

Reference: <https://docs.snowflake.com/en/user-guide/data-time-travel.html#data-retention-period>

#### NEW QUESTION 6

- (Exam Topic 1)

True or False: When active, a pipe requires a dedicated Virtual Warehouse to execute.

- A. True
- B. False

**Answer:** B

#### NEW QUESTION 7

- (Exam Topic 1)

Which of the following are true of multi-cluster Warehouses? Select all that apply below.

- A. A multi-cluster Warehouse can add clusters automatically based on query activity
- B. A multi-cluster Warehouse can automatically turn itself off after a period of inactivity
- C. A multi-cluster Warehouse can scale down when query activity slows
- D. A multi-cluster Warehouse can automatically turn itself on when a query is executed against it

**Answer:** ABCD

#### NEW QUESTION 8

- (Exam Topic 1)

True or False: Micro-partition metadata enables some operations to be completed without requiring Compute.

- A. True
- B. False

**Answer:** A

#### Explanation:

Reference: <https://blog.ippon.tech/innovative-snowflake-features-caching/>

#### NEW QUESTION 9

- (Exam Topic 1)

Which of the following statement is true of Snowflake? Select one.

- A. It was built specifically for the cloud
- B. it was built as an on-premises solution and then potted to the cloud
- C. It was designed as a hybrid database to allow customers to store data either on premises or in the cloud
- D. It was built for Hadoop architecture
- E. It's based on an Oracle Architecture

**Answer:** A

#### NEW QUESTION 10

- (Exam Topic 1)

Credit Consumption by the Compute Layer (Virtual Warehouses) is based on: (Choose two.)

- A. Number of users
- B. Warehouse size
- C. Amount of data processed
- D. # of clusters for the Warehouse

**Answer:** BD

#### Explanation:

<https://docs.snowflake.com/en/user-guide/credits.html#virtual-warehouse-credit-usage> "Snowflake credits are charged based on the number of virtual warehouses you use, how long they run, and their size."

#### NEW QUESTION 10

- (Exam Topic 1)

True or False: All Snowflake table types include fail-safe storage.

- A. True
- B. False

**Answer:** B

#### NEW QUESTION 11

- (Exam Topic 1)

True or False: A customer using SnowSQL / native connectors will be unable be unable to able to also use the Snowflake Web interface (UI) unless access to the UI is explicitly granted by supported.

- A. True
- B. False

**Answer:** B

#### Explanation:

Reference: <https://docs.snowflake.com/en/user-guide/connecting.html>

#### NEW QUESTION 12

- (Exam Topic 1)

True or False: Some queries can be answered through the metadata cache and do not require an active Virtual Warehouse.

- A. True

B. False

**Answer:** A

**Explanation:**

Some aggregate queries are answered thru micro partitions metadata only not requiring any VW spin ups.

#### NEW QUESTION 15

- (Exam Topic 1)

How a Snowpipe charges calculated?

- A. Per-second/per Warehouse size
- B. Per-second/per-core granularity
- C. Number of Pipes in account
- D. Total storage bucket size

**Answer:** B

**Explanation:**

Reference: <https://docs.snowflake.com/en/user-guide/data-load-snowpipe-billing.html>

#### NEW QUESTION 17

- (Exam Topic 1)

True or False: Data in Fail-safe can be deleted by a user or the Snowflake team before it expires.

- A. True
- B. False

**Answer:** B

**Explanation:**

Reference: <https://blog.knoldus.com/ksnow-time-travel-and-fail-safe-in-snowflake/>

#### NEW QUESTION 20

- (Exam Topic 1)

Which of the following are examples of operations that require a Virtual Warehouse to complete, assuming no quires have been executed previously?  
Choose 3 answers

- A. MIN(< < column value>>)
- B. COPY
- C. SUM(<< column value >>)
- D. UPDATE

**Answer:** BCD

#### NEW QUESTION 24

- (Exam Topic 1)

Which of the following statements is true of zero-copy cloning?

- A. Zero-copy clones objects inherit
- B. All zero-copy clone objects inherit the privileges of their original objects
- C. Zero-copy coning is licensed as an additional Snowflake feature
- D. At the instance/instance a clone is created, all micro-partitions in the original table and the clone are fully shared.

**Answer:** D

**Explanation:**

Reference: <https://community.snowflake.com/s/question/0D50Z00009D8VOd/zero-copy-cloning-base-data>

#### NEW QUESTION 28

- (Exam Topic 1)

Which of the following are valid Snowflake Virtual Warehouse Scaling Policies? (Choose two.)

- A. Custom
- B. Economy
- C. Optimized
- D. Standard

**Answer:** BD

**Explanation:**

Reference: <https://community.snowflake.com/s/article/Snowflake-Visualizing-Warehouse-Performance>

#### NEW QUESTION 32

- (Exam Topic 1)

Which item in the Data Warehouse migration process does not apply in Snowflake? (Select two)

- A. Migrate Users
- B. Migrate Schemas
- C. Migrate Indexes
- D. Build the Data pipeline

**Answer:** CD

#### NEW QUESTION 33

- (Exam Topic 1)

True or False: Pipes can be suspended and resumed.

- A. True
- B. False

**Answer:** A

#### Explanation:

<https://docs.snowflake.com/en/user-guide/data-load-snowpipe-intro.html#pausing-or-resuming-pipes> Pausing or Resuming Pipes In addition to the pipe owner, a role that has the following minimum permissions can pause or resume the pipe:

#### NEW QUESTION 34

- (Exam Topic 1)

True or false: Snowflake enforces unique, primary key, and foreign key constraints during DML operations.

- A. True
- B. False

**Answer:** B

#### Explanation:

Reference: <https://docs.snowflake.com/en/sql-reference/constraints-overview.html>

#### NEW QUESTION 37

- (Exam Topic 1)

When can a Virtual Warehouse start running queries?

- A. 12am-5am
- B. Only during administrator defined time slots
- C. When its provisioning is complete
- D. After replication

**Answer:** C

#### Explanation:

<https://docs.snowflake.com/en/user-guide/warehouses-overview.html>

#### NEW QUESTION 38

- (Exam Topic 1)

True or False: Snowflake's Global Services Layer gathers and maintains statistics on all columns in all micro-partitions.

- A. True
- B. False

**Answer:** A

#### Explanation:

Snowflake is a single, integrated platform delivered as-a-service. It features storage, compute, and global services layers that are physically separated but logically integrated.

#### NEW QUESTION 41

- (Exam Topic 1)

True or False: When data share is established between a Data Provider and a data Consumer, the Data Consumer can extend that data share to other Data Consumers.

- A. True
- B. False

**Answer:** B

#### Explanation:

Reference: <https://docs.snowflake.com/en/user-guide/data-sharing-intro.html>

#### NEW QUESTION 43

- (Exam Topic 1)

As a best practice, clustering keys should only be defined on tables of which minimum size?

- A. Multi-Kilobyte (KB) Range
- B. Multi-Megabyte (MB) Range
- C. Multi-Gigabyte (GB) Range
- D. Multi-Terabyte (TB) Range

**Answer:** D

**Explanation:**

Reference: <https://docs.snowflake.com/en/user-guide/tables-clustering-keys.html>

#### NEW QUESTION 46

- (Exam Topic 1)

True or False: It is possible to load data into Snowflake without creating a named File Format object.

- A. True
- B. False

**Answer:** A

**Explanation:**

Reference: <https://docs.snowflake.com/en/user-guide/data-load-external-tutorial-create-file-format.html>

#### NEW QUESTION 50

- (Exam Topic 1)

When scaling out by adding clusters to a multi-cluster warehouse, you are primarily scaling for improved:

- A. Concurrency
- B. Performance

**Answer:** A

**Explanation:**

Reference: <https://docs.snowflake.com/en/user-guide/warehouses-multicloud.html>

#### NEW QUESTION 55

- (Exam Topic 1)

What is the recommended Snowflake data type to store semi-structured data like JSON?

- A. VARCHAR
- B. RAW
- C. LOB
- D. VARIANT

**Answer:** D

**Explanation:**

Reference: <https://docs.snowflake.com/en/sql-reference/data-types-semistructured.html>

#### NEW QUESTION 56

- (Exam Topic 1)

Which of the following commands sets the Virtual Warehouse for a session?

- A. COPT WAREHOUSE FROM <<Config file> ;
- B. SET warehouse = <<warehouse name>>;
- C. USE WAREHOUSE <<warehouse name>>;
- D. USE VIRTUAL\_WAREHOUSE <<warehouse name>>;

**Answer:** C

**Explanation:**

Reference: <https://docs.snowflake.com/en/user-guide/warehouses-tasks.html>

#### NEW QUESTION 60

- (Exam Topic 1)

True or False: It is possible to query data from an Internal or named External stage without loading the data into Snowflake.

- A. True
- B. False

**Answer:** A

#### NEW QUESTION 63

- (Exam Topic 1)

True or False: Bulk unloading of data from Snowflake supports the use of a SELECT statement.

- A. True

B. False

**Answer:** A

**Explanation:**

Reference: <https://docs.snowflake.com/en/user-guide-data-unload.html>

#### NEW QUESTION 64

- (Exam Topic 1)

True or False: Snowflake supports federated authentication in all editions.

A. True

B. False

**Answer:** A

**Explanation:**

Reference:

<https://community.snowflake.com/s/news/federated-authentication-sso-now-available-in-all-snowflake-editions>

#### NEW QUESTION 66

- (Exam Topic 1)

Which of the following statements is true of Snowflake?

A. It was built specifically for the cloud

B. It was built as an on-premises solution and then ported to the cloud

C. It was designed as a hybrid database to allow customers to store data either on premises or in the cloud

D. It was built for Hadoop architecture

E. It's based on an Oracle Architecture

**Answer:** A

**Explanation:**

Reference: <https://www.stitchdata.com/resources/snowflake/>

#### NEW QUESTION 70

- (Exam Topic 1)

When a Pipe is recreated using the CREATE OR REPLACE PIPE command:

A. The Pipe load history is reset to empty

B. The REFRESH parameter is set to TRUE

C. Previously loaded files will be ignored

D. All of the above

**Answer:** A

**Explanation:**

<https://docs.snowflake.com/en/user-guide/data-load-snowpipe-manage.html#load-history> "When a pipe is recreated, the load history is dropped."

#### NEW QUESTION 73

- (Exam Topic 1)

If auto-suspend is enable for a Virtual Warehouse, he Warehouse is automatically suspended when:

A. All Snowflake sessions using the warehouse are terminated.

B. The last query using the warehouse completes.

C. There are no users loaned into Snowflake.

D. The Warehouse is inactive for a specified period of time.

**Answer:** D

**Explanation:**

Reference: <https://docs.snowflake.com/en/user-guide/warehouses-overview.html>

#### NEW QUESTION 77

- (Exam Topic 1)

Increasing the maximum number of clusters in a Multi-Cluster Warehouse is an example of:

A. Scaling rhythmically

B. Scaling max

C. Scaling out

D. Scaling Up

**Answer:** C

**Explanation:**

<https://docs.snowflake.com/en/user-guide/warehouses-considerations.html#scaling-up-vs-scaling-out>

"Scale out by adding warehouses to a multi-cluster warehouse"



#### NEW QUESTION 82

- (Exam Topic 1)

What parameter controls if the Virtual warehouse starts immediately after the CREATE WAREHOUSE statement? Select one.

- A. INITIALLY\_SUSPENDED = TRUE/FALSE
- B. START\_AFTCR\_CREATE = TRUE/FALSE
- C. START\_TTIME = 60 // (seconds from now)
- D. START.TIME = CURRENT.DATE()

**Answer:** A

#### NEW QUESTION 83

- (Exam Topic 1)

To run a Multi-Cluster Warehouse in auto-scale mode, a user would:

- A. Configure the Maximum Clusters setting to “Auto-Scale”
- B. Set the Warehouse type to “Auto”
- C. Set the Minimum Clusters and Maximum Clusters settings to the same value
- D. Set the Minimum Clusters and Maximum Clusters settings to the different values

**Answer:** D

#### Explanation:

Reference: [https://help.pentaho.com/Documentation/9.1/Products/Modify\\_Snowflake\\_warehouse](https://help.pentaho.com/Documentation/9.1/Products/Modify_Snowflake_warehouse)

#### NEW QUESTION 84

- (Exam Topic 1)

which of the following are valid approaches to loading data into a snowflake table? select all the below that apply.

- A. Bulk copy from an External Stage
- B. Continuous load using Snowpipe REST API
- C. The Snowflake Web Interface (UI) data loading wizard
- D. Bulk copy from an Internal Stage

**Answer:** ABC

#### Explanation:

Reference: <https://docs.snowflake.com/en/user-guide/data-load-overview.html>

#### NEW QUESTION 88

- (Exam Topic 1)

Snowflake provides two mechanisms to reduce data storage costs for short-lived tables. These mechanisms are:  
Choose 2 answers

- A. Temporary Tables
- B. Transient Tables
- C. Provisional Tables
- D. Permanent Tables

**Answer:** AB

#### Explanation:

Reference: <https://docs.snowflake.com/en/user-guide/tables-storage-considerations.html>

#### NEW QUESTION 92

- (Exam Topic 1)

Which of the following are options when creating a virtual Warehouse? Choose 2 answers

- A. Auto-drop
- B. Auto resize
- C. Auto-resume
- D. Auto-suspend

**Answer:** CD

#### Explanation:

Reference: [https://help.pentaho.com/Documentation/9.1/Products/Create\\_Snowflake\\_warehouse](https://help.pentaho.com/Documentation/9.1/Products/Create_Snowflake_warehouse) Reference: <https://www.analytics.today/blog/what-is-a-snowflake-virtual-warehouse>

#### NEW QUESTION 93

- (Exam Topic 1)

When should you consider disabling auto-suspend for a Virtual Warehouse? Choose 2 answers

- A. When users will be using compute at different times throughout a 24/7 period
- B. When managing a steady workload
- C. When the compute must be available with no delay or lag time



D. When you don't want to have to manually turn on the Warehouse each time a user needs it

**Answer:** BC

**Explanation:**

Reference: <https://docs.snowflake.com/en/user-guide/warehouses-considerations.html>

#### NEW QUESTION 96

- (Exam Topic 1)

When creating a user it is advisable to:

Choose 2 answers

- A. Set the user to be initially disabled
- B. Force an immediate password change
- C. Set a default role for the user
- D. Set the number of minutes to unlock to 15 minutes
- E. Set the users access to expire within a specified timeframe

**Answer:** BC

#### NEW QUESTION 98

- (Exam Topic 1)

Which of the following objects can be cloned? (Choose four.)

- A. Tables
- B. Named File Formats
- C. Schemas
- D. Shares
- E. Databases
- F. Users

**Answer:** ABCE

**Explanation:**

Which Objects Can Be Cloned?

Data Containment Objects. Databases. Schemas. Tables. Streams.

Data Configuration and Transformation Objects. Stages. File Formats. Sequences. Tasks

#### NEW QUESTION 100

- (Exam Topic 1)

Which of the following statements is true of data loading? Select one.

- A. Resizing the virtual warehouse from x-Small to Small will process a single file twice as fast
- B. The "ideal file size for loading is 16MB to match micro-partition size
- C. Many files in the 10-100MB range tend to land in the 'sweet spot' for load parallelism Once loaded, there is no option to force a reload of an already loaded file

**Answer:** C

#### NEW QUESTION 102

- (Exam Topic 1)

Which of the following terms best describes Snowflake's database architecture?

- A. Columnar shared nothing
- B. Shared disk
- C. Multi-cluster, shared data
- D. Cloud-native shared memory

**Answer:** C

**Explanation:**

<https://www.snowflake.com/product/architecture/>

Built from the ground up for the cloud, Snowflake's unique multi-cluster shared data architecture delivers the performance, scale, elasticity, and concurrency today's organizations require.

#### NEW QUESTION 104

- (Exam Topic 1)

True or False: Snowpipe via RFST API can only reference External Stages as source.

- A. True
- B. False

**Answer:** B

**Explanation:**

Reference: <https://community.snowflake.com/s/article/Making-Transient-table-by-Default>

#### NEW QUESTION 106

- (Exam Topic 1)

Snowflake recommends, as a minimize, that all users with the following roles(s) should be enrolled in Multi-Factor Authentication (MFA):  
Select one:

- A. SECURITYADMIN, ACCOUNTADMIN, PUBLIC, SYSADMIN
- B. SECURITYADMIN ACCOUNTADMIN, SYSADMIN
- C. SECURITYADMIN, ACCOUNTADMIN
- D. ACCOUNTADMIN

**Answer:** D

#### Explanation:

Reference: <https://docs.snowflake.com/en/user-guide/security-mfa.html>

#### NEW QUESTION 108

- (Exam Topic 1)

Which of the following connectors are available in the Downloads section of the Snowflake web Interface (UI)?  
Choose 2 answers

- A. SnowSQL
- B. ODBC
- C. R
- D. HIVE

**Answer:** AB

#### Explanation:

Reference: <https://docs.snowflake.com/en/user-guide/connecting.html>

#### NEW QUESTION 109

- (Exam Topic 1)

What are the three things customers want most from their enterprise data warehouse solution? Choose 3 answers

- A. On-premise availability
- B. Simplicity
- C. Open source based
- D. Concurrency
- E. Performance

**Answer:** BDE

#### NEW QUESTION 110

- (Exam Topic 1)

Which of the following statements are true of Virtual Warehouses? (Choose all that apply.)

- A. Customers can change the size of the Warehouse after creation
- B. A Warehouse can be resized while running
- C. A Warehouse can be configured to suspend after a period of inactivity
- D. A Warehouse can be configured to auto-resume when new queries are submitted

**Answer:** ABCD

#### Explanation:

Reference: <https://docs.snowflake.com/en/user-guide/warehouses-multiclust.html>

#### NEW QUESTION 115

- (Exam Topic 1)

Snowflake is designed for which type of workloads? (Choose two.)

- A. OLAP (Analytics) workloads
- B. OLTP (Transactional) workloads
- C. Concurrent workloads
- D. On-premise workloads

**Answer:** AC

#### Explanation:

Reference: <https://blog.couchbase.com/its-the-workload-stupid/>  
<https://www.quora.com/Can-Snowflake-be-used-for-an-OLTP-system-or-is-it-only-best-suited-for-warehousing>

#### NEW QUESTION 120

- (Exam Topic 1)

What is the maximum compressed row size in Snowflake?

- A. 8KB
- B. 16MB

- C. 50MB
- D. 4000GB

**Answer:** B

**Explanation:**

MAX size for compressed data for semi-structured data type is also 16 MB. That means if our table has a semi-structured data type column with 16MB data other columns will have NULL data.

**NEW QUESTION 122**

- (Exam Topic 1)

True or False: The user has to specify which cluster a query will run on in multi-clustering Warehouse.

- A. True
- B. False

**Answer:** B

**Explanation:**

Reference: <https://docs.snowflake.com/en/user-guide/warehouses-multiclust.html>

**NEW QUESTION 123**

- (Exam Topic 1)

True or False: Snowflake charges additional fees to Data providers for each share they create.

- A. True
- B. False

**Answer:** B

**Explanation:**

"The costs for sharing data with Snowflake are minimal and straightforward. Data providers simply pay Snowflake for the data they store, and data consumers pay for the compute resources their queries consume."

**NEW QUESTION 126**

- (Exam Topic 2)

Which of the following Snowflake features provide continuous data protection automatically? (Select TWO).

- A. Internal stages
- B. Incremental backups
- C. Time Travel
- D. Zero-copy clones
- E. Fail-safe

**Answer:** CE

**Explanation:**

Time travel and fail safe are the two continuous data protection features support the recovery of data automatically.

Snowflake provides powerful CDP features for ensuring the maintenance and availability of your historical data (i.e. data that has been changed or deleted):

- Querying, cloning, and restoring historical data in tables, schemas, and databases for up to 90 days through Snowflake Time Travel.
- Disaster recovery of historical data (by Snowflake) through Snowflake Fail-safe. <https://docs.snowflake.com/en/user-guide/data-availability.html>

**NEW QUESTION 129**

- (Exam Topic 2)

Which of the following are benefits of micro-partitioning? (Select TWO)

- A. Micro-partitions cannot overlap in their range of values
- B. Micro-partitions are immutable objects that support the use of Time Travel.
- C. Micro-partitions can reduce the amount of I/O from object storage to virtual warehouses
- D. Rows are automatically stored in sorted order within micro-partitions
- E. Micro-partitions can be defined on a schema-by-schema basis

**Answer:** AD

**Explanation:**

<https://docs.snowflake.com/en/user-guide/tables-clustering-micropartitions.html>

**NEW QUESTION 133**

- (Exam Topic 2)

True or False: Loading data into Snowflake requires that source data files be no larger than 16MB.

- A. True
- B. False

**Answer:** B

**Explanation:**

By default, COPY INTO location statements separate table data into a set of output files to take advantage of parallel operations. The maximum size for each file is set using the MAX\_FILE\_SIZE copy option. The default value is 16777216 (16 MB) but can be increased to accommodate larger files. The maximum file size supported is 5 GB for Amazon S3, Google Cloud Storage, or Microsoft Azure stages. To unload data to a single output file (at the potential cost of decreased performance), specify the SINGLE = true copy option in your statement. You can optionally specify a name for the file in the path.

#### NEW QUESTION 137

- (Exam Topic 2)

During periods of warehouse contention which parameter controls the maximum length of time a warehouse will hold a query for processing?

- A. STATEMENT\_TIMEOUT\_\_IN\_\_SECONDS
- B. STATEMENT\_QUEUED\_TIMEOUT\_IN\_SECONDS
- C. MAX\_CONCURRENCY LEVEL
- D. QUERY\_TIMEOUT\_IN\_SECONDS

**Answer:** B

#### Explanation:

The parameter STATEMENT\_QUEUED\_TIMEOUT\_IN\_SECONDS

sets the limit for a query to wait in

the queue in order to get its chance of running on the warehouse. The query will quit after reaching this limit. By default, the value of this parameter is 0 which mean the queries will wait indefinitely in the waiting queue

<https://community.snowflake.com/s/article/Warehouse-Concurrency-and-Statement-Timeout-Parameters#:~:text=>

#### NEW QUESTION 140

- (Exam Topic 2)

A marketing co-worker has requested the ability to change a warehouse size on their medium virtual warehouse called mktg\_\_WH.

Which of the following statements will accommodate this request?

- A. ALLOW RESIZE ON WAREHOUSE MKTG\_\_WH TO USER MKTG\_\_LEAD;
- B. GRANT MODIFY ON WAREHOUSE MKTG WH TO ROLE MARKETING;
- C. GRANT MODIFY ON WAREHOUSE MKTG\_\_WH TO USER MKTG\_\_LEAD;
- D. GRANT OPERATE ON WAREHOUSE MKTG WH TO ROLE MARKETING;

**Answer:** B

#### NEW QUESTION 144

- (Exam Topic 2)

Which of the following are valid methods for authenticating users for access into Snowflake? (Select THREE)

- A. SCIM
- B. Federated authentication
- C. TLS 1.2
- D. Key-pair authentication
- E. OAuth
- F. OCSP authentication

**Answer:** BDE

#### NEW QUESTION 145

- (Exam Topic 2)

A developer is granted ownership of a table that has a masking policy. The developer's role is not able to see the masked data. Will the developer be able to modify the table to read the masked data?

- A. Yes, because a table owner has full control and can unset masking policies.
- B. Yes, because masking policies only apply to cloned tables.
- C. No, because masking policies must always reference specific access roles.
- D. No, because ownership of a table does not include the ability to change masking policies

**Answer:** A

#### NEW QUESTION 146

- (Exam Topic 2)

Which of the following Snowflake objects can be shared using a secure share? (Select TWO).

- A. Materialized views
- B. Sequences
- C. Procedures
- D. Tables
- E. Secure User Defined Functions (UDFs)

**Answer:** DE

#### Explanation:

Secure Data Sharing enables sharing selected objects in a database in your account with other Snowflake accounts. The following Snowflake database objects can be shared:

- > Tables
- > External tables

- > Secure views
- > Secure materialized views
- > Secure UDFs

<https://docs.snowflake.com/en/user-guide/data-sharing-intro.html>

#### NEW QUESTION 148

- (Exam Topic 2)

When reviewing the load for a warehouse using the load monitoring chart, the chart indicates that a high volume of Queries are always queuing in the warehouse. According to recommended best practice, what should be done to reduce the Queue volume? (Select TWO).

- A. Use multi-clustered warehousing to scale out warehouse capacity.
- B. Scale up the warehouse size to allow Queries to execute faster.
- C. Stop and start the warehouse to clear the queued queries
- D. Migrate some queries to a new warehouse to reduce load
- E. Limit user access to the warehouse so fewer queries are run against it.

**Answer:** AD

#### NEW QUESTION 150

- (Exam Topic 2)

The fail-safe retention period is how many days?

- A. 1 day
- B. 7 days
- C. 45 days
- D. 90 days

**Answer:** B

#### Explanation:

Reference: <https://docs.snowflake.com/en/user-guide/data-failsafe.html>

#### NEW QUESTION 155

- (Exam Topic 2)

What features does Snowflake Time Travel enable?

- A. Querying data-related objects that were created within the past 365 days
- B. Restoring data-related objects that have been deleted within the past 90 days
- C. Conducting point-in-time analysis for BI reporting
- D. Analyzing data usage/manipulation over all periods of time

**Answer:** B

#### Explanation:

Snowflake Time Travel enables accessing historical data (i.e. data that has been changed or deleted) at any point within a defined period. It serves as a powerful tool for performing the following tasks:

- > Restoring data-related objects (tables, schemas, and databases) that might have been accidentally or intentionally deleted.
- > Duplicating and backing up data from key points in the past.
- > Analyzing data usage/manipulation over specified periods of time.

<https://docs.snowflake.com/en/user-guide/data-time-travel.html>

#### NEW QUESTION 158

- (Exam Topic 2)

A sales table FCT\_SALES has 100 million records. The following Query was executed

```
SELECT COUNT (1) FROM FCT___SALES;
```

How did Snowflake fulfill this query?

- A. Query against the result set cache
- B. Query against a virtual warehouse cache
- C. Query against the most-recently created micro-partition
- D. Query against the metadata excite

**Answer:** D

#### NEW QUESTION 161

- (Exam Topic 2)

Which of the following can be executed/called with Snowpipe?

- A. A User Defined Function (UDF)
- B. A stored procedure
- C. A single copy\_into statement
- D. A single insert\_\_into statement

**Answer:** C

#### NEW QUESTION 165

- (Exam Topic 2)

Which semi-structured file formats are supported when unloading data from a table? (Select TWO).

- A. ORC
- B. XML
- C. Avro
- D. Parquet
- E. JSON

**Answer:** DE

**Explanation:**

Semi-structured JSON, Parquet

<https://docs.snowflake.com/en/user-guide/data-unload-prepare.html#:~:text=Supported%20File%20Formats,-Th>

**NEW QUESTION 170**

- (Exam Topic 2)

Which Snowflake object enables loading data from files as soon as they are available in a cloud storage location?

- A. Pipe
- B. External stage
- C. Task
- D. Stream

**Answer:** A

**Explanation:**

Snowpipe enables loading data from files as soon as they're available in a stage. This means you can load data from files in micro-batches, making it available to users within minutes, rather than manually executing COPY statements on a schedule to load larger batches.

<https://docs.snowflake.com/en/user-guide/data-load-snowpipe-intro.html>

**NEW QUESTION 171**

- (Exam Topic 2)

Which of the following objects can be shared through secure data sharing?

- A. Masking policy
- B. Stored procedure
- C. Task
- D. External table

**Answer:** D

**Explanation:**

Secure Data Sharing enables sharing selected objects in a database in your account with other Snowflake accounts. The following Snowflake database objects can be shared:

- > Tables
- > External tables
- > Secure views
- > Secure materialized views
- > Secure UDFs

Snowflake enables the sharing of databases through shares, which are created by data providers and "imported" by data consumers.

<https://docs.snowflake.com/en/user-guide/data-sharing-intro.html#:~:text=Secure%20Data%20Sharing%20enab>

**NEW QUESTION 174**

- (Exam Topic 2)

Which of the following commands cannot be used within a reader account?

- A. CREATE SHARE
- B. ALTER WAREHOUSE
- C. DROP ROLE
- D. SHOW SCHEMAS
- E. DESCRIBE TABLE

**Answer:** B

**Explanation:**

A reader account is intended primarily for querying data shared by the provider of the account. Adding new data to the account and/or updating shared data in the account is not supported. Changing the configuration of virtual warehouses is also not permitted as those resources are owned and managed by the provider of the account which is sharing the data.

**NEW QUESTION 178**

- (Exam Topic 2)

A user has an application that writes a new Tile to a cloud storage location every 5 minutes. What would be the MOST efficient way to get the files into Snowflake?

- A. Create a task that runs a copy into operation from an external stage every 5 minutes
- B. Create a task that puts the files in an internal stage and automate the data loading wizard
- C. Create a task that runs a GET operation to intermittently check for new files
- D. Set up cloud provider notifications on the Tile location and use Snowpipe with auto-ingest



**Answer:** D

**Explanation:**

<https://docs.snowflake.com/en/user-guide/data-load-snowpipe-intro.html>

#### NEW QUESTION 183

- (Exam Topic 2)

What Snowflake role must be granted for a user to create and manage accounts?

- A. ACCOUNTADMIN
- B. ORGADMIN
- C. SECURITYADMIN
- D. SYSADMIN

**Answer:** A

**Explanation:**

<https://docs.snowflake.com/en/user-guide/security-access-control-considerations.html>

#### NEW QUESTION 184

- (Exam Topic 2)

What is the default character set used when loading CSV files into Snowflake?

- A. UTF-8
- B. UTF-16
- C. ISO S859-1
- D. ANSI\_X3.A

**Answer:** A

**Explanation:**

[#### NEW QUESTION 188](https://docs.snowflake.com/en/user-guide/intro-summary-loading.html#:~:text=For%20delimited%20files%20(,text=For%20delimited%20files%20( For delimited files (CSV, TSV, etc.), the default character set is UTF-8. To use any other characters sets, you must explicitly specify the encoding to use for loading. For the list of supported character sets, see Supported Character Sets for Delimited Files (in this topic).</a></p></div><div data-bbox=)

- (Exam Topic 2)

What can be used to view warehouse usage over time? (Select Two).

- A. The load HISTORY view
- B. The Query history view
- C. The show warehouses command
- D. The WAREHOUSE\_METERING HISTORY View
- E. The billing and usage tab in the Snowflake web UI

**Answer:** DE

#### NEW QUESTION 193

- (Exam Topic 2)

How would you determine the size of the virtual warehouse used for a task?

- A. Root task may be executed concurrently (i.
- B. multiple instances), it is recommended to leave some margins in the execution window to avoid missing instances of execution
- C. Querying (select) the size of the stream content would help determine the warehouse siz
- D. For example, if querying large stream content, use a larger warehouse size
- E. If using the stored procedure to execute multiple SQL statements, it's best to test run the stored procedure separately to size the compute resource first
- F. Since task infrastructure is based on running the task body on schedule, it's recommended to configure the virtual warehouse for automatic concurrency handling using Multi-cluster warehouse (MCW) to match the task schedule

**Answer:** C

#### NEW QUESTION 195

- (Exam Topic 2)

What is a limitation of a Materialized View?

- A. A Materialized View cannot support any aggregate functions
- B. A Materialized View can only reference up to two tables
- C. A Materialized View cannot be joined with other tables
- D. A Materialized View cannot be defined with a JOIN

**Answer:** D

**Explanation:**

There are several limitations to using materialized views:

- A materialized view can query only a single table.
- Joins, including self-joins, are not supported.



#### NEW QUESTION 197

- (Exam Topic 2)

User-level network policies can be created by which of the following roles? (Select TWO).

- A. ROLEADMIN
- B. ACCOUNTADMIN
- C. SYSADMIN
- D. SECURITYADMIN
- E. USERADMIN

**Answer:** DE

#### Explanation:

By default, Snowflake allows users to connect to the service from any computer or device IP address. A security administrator (or higher) can create a network policy to allow or deny access to a single IP address or a list of addresses. Network policies currently support only Internet Protocol version 4 (i.e. IPv4) addresses. An administrator with sufficient permissions can create any number of network policies. [https://docs.snowflake.com/en/user-guide/network-policies.html#:~:text=A%20security%20administrator%20\(o](https://docs.snowflake.com/en/user-guide/network-policies.html#:~:text=A%20security%20administrator%20(o)

#### NEW QUESTION 200

- (Exam Topic 2)

Which data type can be used to store geospatial data in Snowflake?

- A. Variant
- B. Object
- C. Geometry
- D. Geography

**Answer:** D

#### Explanation:

<https://docs.snowflake.com/en/sql-reference/data-types-geospatial.html#:~:text=have%20SRID%3D4326.-,Geos>

#### NEW QUESTION 201

- (Exam Topic 2)

What is a key feature of Snowflake architecture?

- A. Zero-copy cloning creates a mirror copy of a database that updates with the original
- B. Software updates are automatically applied on a quarterly basis
- C. Snowflake eliminates resource contention with its virtual warehouse implementation
- D. Multi-cluster warehouses allow users to run a query that spans across multiple clusters
- E. Snowflake automatically sorts DATE columns during ingest for fast retrieval by date

**Answer:** D

#### NEW QUESTION 205

- (Exam Topic 2)

A virtual warehouse's auto-suspend and auto-resume settings apply to which of the following?

- A. The primary cluster in the virtual warehouse
- B. The entire virtual warehouse
- C. The database in which the virtual warehouse resides
- D. The Queries currently being run on the virtual warehouse

**Answer:** B

#### Explanation:

<https://docs.snowflake.com/en/user-guide/warehouses-overview.html#:~:text=Similarly%2C%20auto%2Dresum>

#### NEW QUESTION 206

- (Exam Topic 2)

Which of the following indicates that it may be appropriate to use a clustering key for a table? (Select TWO).

- A. The table contains a column that has very low cardinality
- B. DML statements that are being issued against the table are blocked
- C. The table has a small number of micro-partitions
- D. Queries on the table are running slower than expected
- E. The clustering depth for the table is large

**Answer:** AE

#### NEW QUESTION 208

- (Exam Topic 2)

What are two ways to create and manage Data Shares in Snowflake? (Choose two.)

- A. Via the Snowflake Web Interface (UI)
- B. Via the `data_share=true` parameter
- C. Via SQL commands

D. Via Virtual Warehouses

**Answer:** AC

**Explanation:**

Reference: <https://docs.snowflake.com/en/user-guide/data-sharing-provider.html>

#### NEW QUESTION 209

- (Exam Topic 2)

Which feature is only available in the Enterprise or higher editions of Snowflake?

- A. Column-level security
- B. SOC 2 type II certification
- C. Multi-factor Authentication (MFA)
- D. Object-level access control

**Answer:** A

**Explanation:**

<https://docs.snowflake.com/en/user-guide/intro-editions.html>

#### NEW QUESTION 212

- (Exam Topic 2)

What tasks can be completed using the copy command? (Select TWO)

- A. Columns can be aggregated
- B. Columns can be joined with an existing table
- C. Columns can be reordered
- D. Columns can be omitted
- E. Data can be loaded without the need to spin up a virtual warehouse

**Answer:** CD

#### NEW QUESTION 215

- (Exam Topic 2)

What transformations are supported in a CREATE PIPE ... AS COPY ... FROM (....) statement? (Select TWO.)

- A. Data can be filtered by an optional where clause
- B. Incoming data can be joined with other tables
- C. Columns can be reordered
- D. Columns can be omitted
- E. Row level access can be defined

**Answer:** CD

#### NEW QUESTION 217

- (Exam Topic 3)

Which methods can be used to delete staged files from a Snowflake stage? (Choose two.)

- A. Use the DROP <file> command after the load completes.
- B. Specify the TEMPORARY option when creating the file format.
- C. Specify the PURGE copy option in the COPY INTO <table> command.
- D. Use the REMOVE command after the load completes.
- E. Use the DELETE LOAD HISTORY command after the load completes.

**Answer:** CD

#### NEW QUESTION 222

- (Exam Topic 3)

Which command should be used to load data from a file, located in an external stage, into a table in Snowflake?

- A. INSERT
- B. PUT
- C. GET
- D. COPY

**Answer:** D

#### NEW QUESTION 225

- (Exam Topic 3)

Which of the following is an example of an operation that can be completed without requiring compute, assuming no queries have been executed previously?

- A. SELECT SUM (ORDER\_AMT) FROM SALES;
- B. SELECT AVG(ORDER\_QTY) FROM SALES;
- C. SELECT MIN(ORDER\_AMT) FROM SALES;
- D. SELECT ORDER\_AMT \* ORDER\_QTY FROM SALES;

**Answer:** B

**NEW QUESTION 228**

- (Exam Topic 3)

What are the responsibilities of Snowflake's Cloud Service layer? (Choose three.)

- A. Authentication
- B. Resource management
- C. Virtual warehouse caching
- D. Query parsing and optimization
- E. Query execution
- F. Physical storage of micro-partitions

**Answer:** ADE

**NEW QUESTION 233**

- (Exam Topic 3)

What is the minimum Snowflake edition that has column-level security enabled?

- A. Standard
- B. Enterprise
- C. Business Critical
- D. Virtual Private Snowflake

**Answer:** B

**NEW QUESTION 238**

- (Exam Topic 3)

What is the maximum Time Travel retention period for a temporary Snowflake table?

- A. 90 days
- B. 1 day
- C. 7 days
- D. 45 days

**Answer:** B

**NEW QUESTION 242**

- (Exam Topic 3)

How many days is load history for Snowpipe retained?

- A. 1 day
- B. 7 days
- C. 14 days
- D. 64 days

**Answer:** C

**NEW QUESTION 243**

- (Exam Topic 3)

A materialized view should be created when which of the following occurs? (Choose two.)

- A. There is minimal cost associated with running the query.
- B. The query consumes many compute resources every time it runs.
- C. The base table gets updated frequently.
- D. The query is highly optimized and does not consume many compute resources.
- E. The results of the query do not change often and are used frequently.

**Answer:** CE

**NEW QUESTION 246**

- (Exam Topic 3)

What is the MINIMUM Snowflake edition required to use the periodic rekeying of micro-partitions?

- A. Enterprise
- B. Business Critical
- C. Standard
- D. Virtual Private Snowflake

**Answer:** B

**Explanation:**

Reference: <https://docs.snowflake.com/en/user-guide/intro-editions.html#business-critical-edition>

**NEW QUESTION 248**

- (Exam Topic 3)

What type of query benefits the MOST from search optimization?

- A. A query that uses only disjunction (i.e., OR) predicates
- B. A query that includes analytical expressions
- C. A query that uses equality predicates or predicates that use IN
- D. A query that filters on semi-structured data types

**Answer:** C

**Explanation:**

Reference: <https://community.snowflake.com/s/article/Search-Optimization-When-How-To-Use>

#### NEW QUESTION 253

- (Exam Topic 3)

Which data type can store more than one type of data structure?

- A. JSON
- B. BINARY
- C. VARCHAR
- D. VARIANT

**Answer:** D

#### NEW QUESTION 255

- (Exam Topic 3)

Which of the following are considerations when using a directory table when working with unstructured data? (Choose two.)

- A. A directory table is a separate database object.
- B. Directory tables store data file metadata.
- C. A directory table will be automatically added to a stage.
- D. Directory tables do not have their own grantable privileges.
- E. Directory table data can not be refreshed manually.

**Answer:** BD

#### NEW QUESTION 260

- (Exam Topic 3)

The Snowflake Search Optimization Services supports improved performance of which kind of query?

- A. Queries against large tables where frequent DML occurs
- B. Queries against tables larger than 1 TB
- C. Selective point lookup queries
- D. Queries against a subset of columns in a table

**Answer:** C

**Explanation:**

Reference:

[https://docs.snowflake.com/en/user-guide/search-optimization-service.html#:~:text=The%20search%20optimiza%20point,OBJECT%2C%20and%20ARRAY%20columns\)](https://docs.snowflake.com/en/user-guide/search-optimization-service.html#:~:text=The%20search%20optimiza%20point,OBJECT%2C%20and%20ARRAY%20columns))

#### NEW QUESTION 264

- (Exam Topic 3)

Credit charges for Snowflake virtual warehouses are calculated based on which of the following considerations? (Choose two.)

- A. The number of queries executed
- B. The number of active users assigned to the warehouse
- C. The size of the virtual warehouse
- D. The length of time the warehouse is running
- E. The duration of the queries that are executed

**Answer:** AD

#### NEW QUESTION 268

- (Exam Topic 3)

A data provider wants to share data with a consumer who does not have a Snowflake account. The provider creates a reader account for the consumer following these steps:

- \* 1. Created a user called "CONSUMER"
  - \* 2. Created a database to hold the share and an extra-small warehouse to query the data
  - \* 3. Granted the role PUBLIC the following privileges: Usage on the warehouse, database, and schema, and SELECT on all the objects in the share
- Based on this configuration what is true of the reader account?

- A. The reader account will automatically use the Standard edition of Snowflake.
- B. The reader account compute will be billed to the provider account.
- C. The reader account can clone data the provider has shared, but cannot re-share it.
- D. The reader account can create a copy of the shared data using CREATE TABLE AS...

**Answer:** C

**NEW QUESTION 269**

- (Exam Topic 3)

How can a row access policy be applied to a table or a view? (Choose two.)

- A. Within the policy DDL
- B. Within the create table or create view DDL
- C. By future APPLY for all objects in a schema
- D. Within a control table
- E. Using the command ALTER <object> ADD ROW ACCESS POLICY <policy>;

**Answer:** BD

**NEW QUESTION 270**

- (Exam Topic 3)

Query parsing and compilation occurs in which architecture layer of the Snowflake Cloud Data Platform?

- A. Cloud services layer
- B. Compute layer
- C. Storage layer
- D. Cloud agnostic layer

**Answer:** B

**Explanation:**

Reference: <https://www.projectpro.io/article/snowflake-architecture-what-does-snowflake-do/556>

**NEW QUESTION 272**

- (Exam Topic 3)

Which of the following are characteristics of security in Snowflake?

- A. Account and user authentication is only available with the Snowflake Business Critical edition.
- B. Support for HIPAA and GDPR compliance is available for UI Snowflake editions.
- C. Periodic rekeying of encrypted data is available with the Snowflake Enterprise edition and higher
- D. Private communication to internal stages is allowed in the Snowflake Enterprise edition and higher.

**Answer:** C

**NEW QUESTION 273**

- (Exam Topic 3)

Which stages are used with the Snowflake PUT command to upload files from a local file system? (Choose three.)

- A. Schema Stage
- B. User Stage
- C. Database Stage
- D. Table Stage
- E. External Named Stage
- F. Internal Named Stage

**Answer:** AEF

**NEW QUESTION 278**

- (Exam Topic 3)

Which Snowflake objects can be shared with other Snowflake accounts? (Choose three.)

- A. Schemas
- B. Roles
- C. Secure Views
- D. Stored Procedures
- E. Tables
- F. Secure User-Defined Functions (UDFs)

**Answer:** ABF

**NEW QUESTION 282**

- (Exam Topic 3)

What actions will prevent leveraging of the ResultSet cache? (Choose two.)

- A. Removing a column from the query SELECT list
- B. Stopping the virtual warehouse that the query is running against
- C. Clustering of the data used by the query
- D. Executing the RESULTS\_SCAN() table function
- E. Changing a column that is not in the cached query

**Answer:** AD

#### NEW QUESTION 284

- (Exam Topic 3)

Which of the following is a data tokenization integration partner?

- A. Protegrity
- B. Tableau
- C. DBeaver
- D. SAP

**Answer:** A

#### NEW QUESTION 287

- (Exam Topic 3)

Which of the following are characteristics of Snowflake virtual warehouses? (Choose two.)

- A. Auto-resume applies only to the last warehouse that was started in a multi-cluster warehouse.
- B. The ability to auto-suspend a warehouse is only available in the Enterprise edition or above.
- C. SnowSQL supports both a configuration file and a command line option for specifying a default warehouse.
- D. A user cannot specify a default warehouse when using the ODBC driver.
- E. The default virtual warehouse size can be changed at any time.

**Answer:** A

#### NEW QUESTION 292

- (Exam Topic 3)

User INQUISITIVE\_PERSON has been granted the role DATA\_SCIENCE. The role DATA\_SCIENCE has privileges OWNERSHIP on the schema MARKETING of the database ANALYTICS\_DW.

Which command will show all privileges granted to that schema?

- A. SHOW GRANTS ON ROLE DATA\_SCIENCE
- B. SHOW GRANTS ON SCHEMA ANALYTICS\_DW.MARKETING
- C. SHOW GRANTS TO USER INQUISITIVE\_PERSON
- D. SHOW GRANTS OF ROLE DATA\_SCIENCE

**Answer:** B

#### NEW QUESTION 296

- (Exam Topic 3)

A Snowflake user executed a query and received the results. Another user executed the same query 4 hours later. The data had not changed. What will occur?

- A. No virtual warehouse will be used, data will be read from the result cache.
- B. No virtual warehouse will be used, data will be read from the local disk cache.
- C. The default virtual warehouse will be used to read all data.
- D. The virtual warehouse that is defined at the session level will be used to read all data.

**Answer:** A

#### NEW QUESTION 300

- (Exam Topic 3)

When loading data into Snowflake, how should the data be organized?

- A. Into single files with 100-250 MB of compressed data per file
- B. Into single files with 1-100 MB of compressed data per file
- C. Into files of maximum size of 1 GB of compressed data per file
- D. Into files of maximum size of 4 GB of compressed data per file

**Answer:** A

#### NEW QUESTION 303

- (Exam Topic 3)

Which Snowflake SQL statement would be used to determine which users and roles have access to a role called MY\_ROLE?

- A. SHOW GRANTS OF ROLE MY\_ROLE
- B. SHOW GRANTS TO ROLE MY\_ROLE
- C. SHOW GRANTS FOR ROLE MY\_ROLE
- D. SHOW GRANTS ON ROLE MY\_ROLE

**Answer:** B

#### NEW QUESTION 308

- (Exam Topic 3)

What is the default file size when unloading data from Snowflake using the COPY command?

- A. 5 MB
- B. 8 GB



- C. 16 MB
- D. 32 MB

**Answer:** C

#### NEW QUESTION 310

- (Exam Topic 3)

What is an advantage of using an explain plan instead of the query profiler to evaluate the performance of a query?

- A. The explain plan output is available graphically.
- B. An explain plan can be used to conduct performance analysis without executing a query.
- C. An explain plan will handle queries with temporary tables and the query profiler will not.
- D. An explain plan's output will display automatic data skew optimization information.

**Answer:** B

#### NEW QUESTION 314

- (Exam Topic 3)

What are common issues found by using the Query Profile? (Choose two.)

- A. Identifying queries that will likely run very slowly before executing them
- B. Locating queries that consume a high amount of credits
- C. Identifying logical issues with the queries
- D. Identifying inefficient micro-partition pruning
- E. Data spilling to a local or remote disk

**Answer:** AD

#### NEW QUESTION 318

- (Exam Topic 3)

A running virtual warehouse is suspended.

What is the MINIMUM amount of time that the warehouse will incur charges for when it is restarted?

- A. 1 second
- B. 60 seconds
- C. 5 minutes
- D. 60 minutes

**Answer:** B

#### NEW QUESTION 322

- (Exam Topic 3)

Which minimum Snowflake edition allows for a dedicated metadata store?

- A. Standard
- B. Enterprise
- C. Business Critical
- D. Virtual Private Snowflake

**Answer:** D

#### Explanation:

Reference: <https://docs.snowflake.com/en/user-guide/intro-editions.html>

#### NEW QUESTION 326

- (Exam Topic 3)

Which Snowflake feature allows a user to substitute a randomly generated identifier for sensitive data, in order to prevent unauthorized users access to the data, before loading it into Snowflake?

- A. External Tokenization
- B. External Tables
- C. Materialized Views
- D. User-Defined Table Functions (UDTF)

**Answer:** A

#### NEW QUESTION 328

- (Exam Topic 3)

How are serverless features billed?

- A. Per second multiplied by an automatic sizing for the job
- B. Per minute multiplied by an automatic sizing for the job, with a minimum of one minute
- C. Per second multiplied by the size, as determined by the SERVERLESS\_FEATURES\_SIZE account parameter
- D. Serverless features are not billed, unless the total cost for the month exceeds 10% of the warehouse credits, on the account

**Answer:** D



#### NEW QUESTION 329

- (Exam Topic 3)

Users are responsible for data storage costs until what occurs?

- A. Data expires from Time Travel
- B. Data expires from Fail-safe
- C. Data is deleted from a table
- D. Data is truncated from a table

**Answer:** B

#### NEW QUESTION 332

- (Exam Topic 3)

Which privilege is required for a role to be able to resume a suspended warehouse if auto-resume is not enabled?

- A. USAGE
- B. OPERATE
- C. MONITOR
- D. MODIFY

**Answer:** B

#### Explanation:

Reference:

<https://community.snowflake.com/s/question/0D50Z00008yHYdqSAG/auto-resume-operate-warehouse-privileg>

#### NEW QUESTION 335

- (Exam Topic 3)

By default, which Snowflake role is required to create a share?

- A. ORGADMIN
- B. SECURITYADMIN
- C. SHAREADMIN
- D. ACCOUNTADMIN

**Answer:** C

#### NEW QUESTION 338

- (Exam Topic 3)

What are best practice recommendations for using the ACCOUNTADMIN system-defined role in Snowflake? (Choose two.)

- A. Ensure all ACCOUNTADMIN roles use Multi-factor Authentication (MFA).
- B. All users granted ACCOUNTADMIN role must be owned by the ACCOUNTADMIN role.
- C. The ACCOUNTADMIN role must be granted to only one user.
- D. Assign the ACCOUNTADMIN role to at least two users, but as few as possible.
- E. All users granted ACCOUNTADMIN role must also be granted SECURITYADMIN role.

**Answer:** AD

#### NEW QUESTION 343

- (Exam Topic 3)

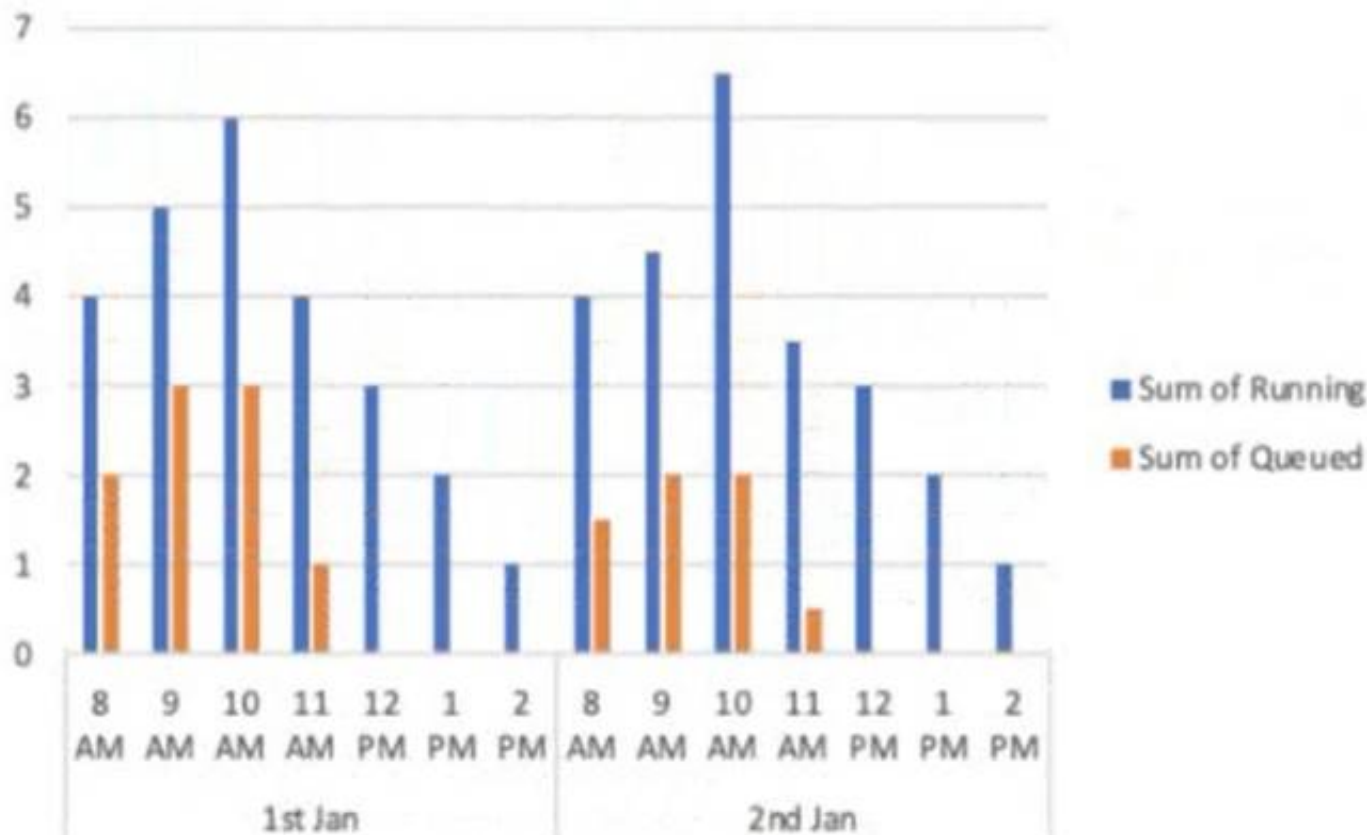
A virtual warehouse is created using the following command:

```
Create warehouse my_WH with warehouse_size = MEDIUM min_cluster_count = 1
```

```
max_cluster_count = 1
```

```
auto_suspend = 60 auto_resume = true;
```

The image below is a graphical representation of the warehouse utilization across two days.



What action should be taken to address this situation?

- A. Increase the warehouse size from Medium to 2XL.
- B. Increase the value for the parameter MAX\_CONCURRENCY\_LEVEL.
- C. Configure the warehouse to a multi-cluster warehouse.
- D. Lower the value of the parameter STATEMENT\_QUEUED\_TIMEOUT\_IN\_SECONDS.

**Answer: B**

#### NEW QUESTION 344

- (Exam Topic 3)

A user created a transient table and made several changes to it over the course of several days. Three days after the table was created, the user would like to go back to the first version of the table.

How can this be accomplished?

- A. Use Time Travel, as long as DATA\_RETENTION\_TIME\_IN\_DAYS was set to at least 3 days.
- B. The transient table version cannot be retrieved after 24 hours.
- C. Contact Snowflake Support to have the data retrieved from Fail-safe storage.
- D. Use the FAIL\_SAFE parameter for Time Travel to retrieve the data from Fail-safe storage.

**Answer: B**

#### NEW QUESTION 345

- (Exam Topic 3)

Which of the following significantly improves the performance of selective point lookup queries on a table?

- A. Clustering
- B. Materialized Views
- C. Zero-copy Cloning
- D. Search Optimization Service

**Answer: A**

#### NEW QUESTION 349

- (Exam Topic 3)

What is true about sharing data in Snowflake? (Choose two.)

- A. The Data Consumer pays for data storage as well as for data computing.
- B. The shared data is copied into the Data Consumer account, so the Consumer can modify it without impacting the base data of the Provider.
- C. A Snowflake account can both provide and consume shared data.
- D. The Provider is charged for compute resources used by the Data Consumer to query the shared data.
- E. The Data Consumer pays only for compute resources to query the shared data.

**Answer: BC**

#### NEW QUESTION 352

- (Exam Topic 3)

How would a user execute a series of SQL statements using a task?

- A. Include the SQL statements in the body of the task CREATE TASK mytask .. AS INSERT INTO target1 SELECT .. FROM stream\_s1 WHERE .. INSERT INTO target2 SELECT .. FROM stream\_s1 WHERE ..
- B. A stored procedure can have only one DML statement per stored procedure invocation and therefore the user should sequence stored procedure calls in the task definition CREATE TASK mytask .... AS call stored\_proc1(); call stored\_proc2();

- C. Use a stored procedure executing multiple SQL statements and invoke the stored procedure from the task.
- D. CREATE TASK mytask .... AS call stored\_proc\_multiple\_statements\_inside();
- E. Create a task for each SQL statement (e.
- F. resulting in task1, task2, etc.) and string the series of SQL statements by having a control task calling task1, task2, etc.
- G. sequentially.

**Answer:** D

#### NEW QUESTION 356

- (Exam Topic 3)

In the Snowflake access control model, which entity owns an object by default?

- A. The user who created the object
- B. The SYSADMIN role
- C. Ownership depends on the type of object
- D. The role used to create the object

**Answer:** D

#### NEW QUESTION 360

- (Exam Topic 3)

How should a virtual warehouse be configured if a user wants to ensure that additional multi-clusters are resumed with no delay?

- A. Configure the warehouse to a size larger than generally required
- B. Set the minimum and maximum clusters to autoscale
- C. Use the standard warehouse scaling policy
- D. Use the economy warehouse scaling policy

**Answer:** B

#### NEW QUESTION 365

- (Exam Topic 3)

Which SQL commands, when committed, will consume a stream and advance the stream offset? (Choose two.)

- A. UPDATE TABLE FROM STREAM
- B. SELECT FROM STREAM
- C. INSERT INTO TABLE SELECT FROM STREAM
- D. ALTER TABLE AS SELECT FROM STREAM
- E. BEGIN COMMIT

**Answer:** CD

#### NEW QUESTION 370

- (Exam Topic 3)

What are advantages clones have over tables created with CREATE TABLE AS SELECT statement? (Choose two.)

- A. The clone always stays in sync with the original table.
- B. The clone has better query performance.
- C. The clone is created almost instantly.
- D. The clone will have time travel history from the original table.
- E. The clone saves space by not duplicating storage.

**Answer:** CE

#### NEW QUESTION 373

- (Exam Topic 3)

What versions of Snowflake should be used to manage compliance with Personal Identifiable Information (PII) requirements? (Choose two.)

- A. Custom Edition
- B. Virtual Private Snowflake
- C. Business Critical Edition
- D. Standard Edition
- E. Enterprise Edition

**Answer:** BC

#### NEW QUESTION 378

- (Exam Topic 3)

Which Snowflake layer is always leveraged when accessing a query from the result cache?

- A. Metadata
- B. Data Storage
- C. Compute
- D. Cloud Services

**Answer:** D

#### NEW QUESTION 383

- (Exam Topic 3)

Which database objects can be shared with the Snowflake secure data sharing feature? (Choose two.)

- A. Files
- B. External tables
- C. Secure User-Defined Functions (UDFs)
- D. Sequences
- E. Streams

**Answer:** BC

#### NEW QUESTION 384

- (Exam Topic 3)

Which URL type allows users to access unstructured data without authenticating into Snowflake or passing an authorization token?

- A. Pre-signed URL
- B. Scoped URL
- C. Signed URL
- D. File URL

**Answer:** C

#### NEW QUESTION 388

- (Exam Topic 3)

The Snowflake Cloud Data Platform is described as having which of the following architectures?

- A. Shared-disk
- B. Shared-nothing
- C. Multi-cluster shared data
- D. Serverless query engine

**Answer:** C

#### NEW QUESTION 390

- (Exam Topic 3)

When loading data into Snowflake via Snowpipe what is the compressed file size recommendation?

- A. 10-50 MB
- B. 100-250 MB
- C. 300-500 MB
- D. 1000-1500 MB

**Answer:** B

#### NEW QUESTION 391

- (Exam Topic 3)

Which parameter can be used to instruct a COPY command to verify data files instead of loading them into a specified table?

- A. STRIP\_NULL\_VALUES
- B. SKIP\_BYTE\_ORDER\_MARK
- C. REPLACE\_INVALID\_CHARACTERS
- D. VALIDATION\_MODE

**Answer:** D

#### Explanation:

<https://docs.snowflake.com/en/sql-reference/sql/copy-into-table.html>

VALIDATION\_MODE = RETURN\_ROWS | RETURN\_ERRORS | RETURN\_ALL\_ERRORS

String (constant) that instructs the COPY command to validate the data files instead of loading them into the

specified table; i.e. the COPY command tests the files for errors but does not load them. The command validates the data to be loaded and returns results based on the validation option specified:

#### NEW QUESTION 392

- (Exam Topic 3)

Which Snowflake feature will allow small volumes of data to continuously load into Snowflake and will incrementally make the data available for analysis?

- A. COPY INTO
- B. CREATE PIPE
- C. INSERT INTO
- D. TABLE STREAM

**Answer:** B

#### NEW QUESTION 394

- (Exam Topic 3)

A table needs to be loaded. The input data is in JSON format and is a concatenation of multiple JSON documents. The file size is 3 GB. A warehouse size small is being used. The following COPY INTO

command was executed:

COPY INTO SAMPLE FROM @~/SAMPLE.JSON (TYPE=JSON)

The load failed with this error:

Max LOB size (16777216) exceeded, actual size of parsed column is 17894470. How can this issue be resolved?

- A. Compress the file and load the compressed file.
- B. Split the file into multiple files in the recommended size range (100 MB - 250 MB).
- C. Use a larger-sized warehouse.
- D. Set STRIP\_OUTER\_ARRAY=TRUE in the COPY INTO command.

**Answer:** A

#### NEW QUESTION 396

- (Exam Topic 3)

How does Snowflake Fail-safe protect data in a permanent table?

- A. Fail-safe makes data available up to 1 day, recoverable by user operations.
- B. Fail-safe makes data available for 7 days, recoverable by user operations.
- C. Fail-safe makes data available for 7 days, recoverable only by Snowflake Support.
- D. Fail-safe makes data available up to 1 day, recoverable only by Snowflake Support.

**Answer:** C

#### NEW QUESTION 400

- (Exam Topic 3)

In a Snowflake role hierarchy, what is the top-level role?

- A. SYSADMIN
- B. ORGADMIN
- C. ACCOUNTADMIN
- D. SECURITYADMIN

**Answer:** B

#### NEW QUESTION 402

- (Exam Topic 3)

Which commands should be used to grant the privilege allowing a role to select data from all current tables and any tables that will be created later in a schema? (Choose two.)

- A. grant USAGE on all tables in schema DB1.SCHEMA to role MYROLE;
- B. grant USAGE on future tables in schema DB1.SCHEMA to role MYROLE;
- C. grant SELECT on all tables in schema DB1.SCHEMA to role MYROLE;
- D. grant SELECT on future tables in schema DB1.SCHEMA to role MYROLE;
- E. grant SELECT on all tables in database DB1 to role MYROLE;
- F. grant SELECT on future tables in database DB1 to role MYROLE;

**Answer:** CD

#### NEW QUESTION 405

- (Exam Topic 3)

What are the correct parameters for time travel and fail-safe in the Snowflake Enterprise Edition?

- A. Default Time Travel Retention is set to 0 days.Maximum Time Travel Retention is 30 day
- B. Fail Safe retention time is 1 day.
- C. Default Time Travel Retention is set to 1 day.Maximum Time Travel Retention is 365 day
- D. Fail Safe retention time is 7 days.
- E. Default Time Travel Retention is set to 0 days.Maximum Time Travel Retention is 90 day
- F. Fail Safe retention time is 7 days.
- G. Default Time Travel Retention is set to 1 day.Maximum Time Travel Retention is 90 day
- H. Fail Safe retention time is 7 days.
- I. Default Time Travel Retention is set to 7 days.Maximum Time Travel Retention is 1 da
- J. Fail Safe retention time is 90 days.
- K. Default Time Travel Retention is set to 90 days.Maximum Time Travel Retention is 7 day
- L. Fail Safe retention time is 356 days.

**Answer:** D

#### NEW QUESTION 408

- (Exam Topic 3)

When should a multi-cluster warehouse be used in auto-scaling mode?

- A. When it is unknown how much compute power is needed
- B. If the select statement contains a large number of temporary tables or Common Table Expressions (CTEs)
- C. If the runtime of the executed query is very slow
- D. When a large number of concurrent queries are run on the same warehouse

**Answer:** D

**NEW QUESTION 410**

- (Exam Topic 3)

What impacts the credit consumption of maintaining a materialized view? (Choose two.)

- A. Whether or not it is also a secure view
- B. How often the underlying base table is queried
- C. How often the base table changes
- D. Whether the materialized view has a cluster key defined
- E. How often the materialized view is queried

**Answer:** DE

**NEW QUESTION 414**

- (Exam Topic 3)

Which snowflake objects will incur both storage and cloud compute charges? (Select TWO)

- A. Materialized view
- B. Sequence
- C. Secure view
- D. Transient table
- E. Clustered table

**Answer:** DE

**NEW QUESTION 416**

- (Exam Topic 3)

What is the SNOWFLAKE.ACCOUNT\_USAGE view that contains information about which objects were read by queries within the last 365 days (1 year)?

- A. VIEWS\_HISTORY
- B. OBJECT\_HISTORY
- C. ACCESS\_HISTORY
- D. LOGIN\_HISTORY

**Answer:** C

**NEW QUESTION 419**

- (Exam Topic 3)

Which of the following statements apply to Snowflake in terms of security? (Choose two.)

- A. Snowflake leverages a Role-Based Access Control (RBAC) model.
- B. Snowflake requires a user to configure an IAM user to connect to the database.
- C. All data in Snowflake is encrypted.
- D. Snowflake can run within a user's own Virtual Private Cloud (VPC).
- E. All data in Snowflake is compressed.

**Answer:** AD

**NEW QUESTION 421**

- (Exam Topic 3)

What types of data listings are available in the Snowflake Data Marketplace? (Choose two.)

- A. Reader
- B. Consumer
- C. Vendor
- D. Standard
- E. Personalized

**Answer:** DE

**NEW QUESTION 423**

- (Exam Topic 3)

Which of the following describes the Snowflake Cloud Services layer?

- A. Coordinates activities in the Snowflake account
- B. Executes queries submitted by the Snowflake account users
- C. Manages quotas on the Snowflake account storage
- D. Manages the virtual warehouse cache to speed up queries

**Answer:** A

**NEW QUESTION 425**

- (Exam Topic 3)

Which of the following statements describe features of Snowflake data caching? (Choose two.)



- A. When a virtual warehouse is suspended, the data cache is saved on the remote storage layer.
- B. When the data cache is full, the least-recently used data will be cleared to make room.
- C. A user can only access their own queries from the query result cache.
- D. A user must set USE\_METADATA\_CACHE to TRUE to use the metadata cache in queries.
- E. The RESULT\_SCAN table function can access and filter the contents of the query result cache.

**Answer:** BD

#### NEW QUESTION 427

- (Exam Topic 3)

For non-materialized views, what column in Information Schema and Account Usage identifies whether a view is secure or not?

- A. CHECK\_OPTION
- B. IS\_SECURE
- C. IS\_UPDATEABLE
- D. TABLE\_NAME

**Answer:** B

#### NEW QUESTION 432

- (Exam Topic 3)

Which of the following features are available with the Snowflake Enterprise edition? (Choose two.)

- A. Database replication and failover
- B. Automated index management
- C. Customer managed keys (Tri-secret secure)
- D. Extended time travel
- E. Native support for geospatial data

**Answer:** AD

#### NEW QUESTION 435

- (Exam Topic 3)

Using variables in Snowflake is denoted by using which SQL character?

- A. @
- B. &
- C. \$
- D. #

**Answer:** C

#### NEW QUESTION 439

.....



## THANKS FOR TRYING THE DEMO OF OUR PRODUCT

Visit Our Site to Purchase the Full Set of Actual SnowPro-Core Exam Questions With Answers.

We Also Provide Practice Exam Software That Simulates Real Exam Environment And Has Many Self-Assessment Features. Order the SnowPro-Core Product From:

<https://www.2passeasy.com/dumps/SnowPro-Core/>

## Money Back Guarantee

### **SnowPro-Core Practice Exam Features:**

- \* SnowPro-Core Questions and Answers Updated Frequently
- \* SnowPro-Core Practice Questions Verified by Expert Senior Certified Staff
- \* SnowPro-Core Most Realistic Questions that Guarantee you a Pass on Your FirstTry
- \* SnowPro-Core Practice Test Questions in Multiple Choice Formats and Updatesfor 1 Year