



The-Open-Group

Exam Questions OGEA-103

TOGAF Enterprise Architecture Combined Part 1 and Part 2 Exam

About ExamBible

[Your Partner of IT Exam](#)

Found in 1998

ExamBible is a company specialized on providing high quality IT exam practice study materials, especially Cisco CCNA, CCDA, CCNP, CCIE, Checkpoint CCSE, CompTIA A+, Network+ certification practice exams and so on. We guarantee that the candidates will not only pass any IT exam at the first attempt but also get profound understanding about the certificates they have got. There are so many alike companies in this industry, however, ExamBible has its unique advantages that other companies could not achieve.

Our Advances

* 99.9% Uptime

All examinations will be up to date.

* 24/7 Quality Support

We will provide service round the clock.

* 100% Pass Rate

Our guarantee that you will pass the exam.

* Unique Gurantee

If you do not pass the exam at the first time, we will not only arrange FULL REFUND for you, but also provide you another exam of your claim, ABSOLUTELY FREE!

NEW QUESTION 1

- (Topic 1)

What is an objective of the ADM Implementation Governance Phase?

- A. To provide continual monitoring of the governance framework
- B. To ensure conformance for the target architecture
- C. To finalize the Implementation and Migration Plan
- D. To establish the resources for architecture governance

Answer: B

Explanation:

The objective of the ADM Implementation Governance Phase is to provide an architectural oversight of the implementation and to ensure conformance for the target architecture. This phase involves establishing procedures and processes to monitor and control the implementation projects and to verify that they comply with the defined architecture. Reference: The TOGAF® Standard | The Open Group Website, Section 3.2.7 Phase G: Implementation Governance.

NEW QUESTION 2

- (Topic 1)

Consider the following ADM phases objectives.

	Objective
1	Ensure that the business value and cost of work packages and Transition Architectures is understood by key stakeholders
2	Ensure conformance with the Target Architecture by implementation projects
3	Ensure that the architecture development cycle is maintained
4	Ensure that the Architecture Governance Framework is executed

Which phase does each objective match?

- A. 1F-2G-3G-4H
- B. 1H-2F-3F-4G
- C. 1F-2G-3H-4H
- D. 1G-2H-3H-4F

Answer: B

Explanation:

? According to the TOGAF Standard, Version 9.2, the ADM phases and their objectives are as follows1:

? Based on the above definitions, we can match each objective with the corresponding phase as follows:

References:

? 1: The TOGAF Standard, Version 9.2, Chapter 5: Architecture Development Method (ADM)

? 2: The TOGAF Standard, Version 9.2, Chapter 21: Architecture Change Management

? 3: The TOGAF Standard, Version 9.2, Chapter 20: Migration Planning

? 4: The TOGAF Standard, Version 9.2, Chapter 19: Implementation Governance

NEW QUESTION 3

- (Topic 1)

Consider the following statement.

Projects may cycle between ADM phases, in planned cycles covering multiple phases. What does it illustrate?

- A. Requirements management
- B. Iteration
- C. Implementation governance
- D. Enterprise Architecture

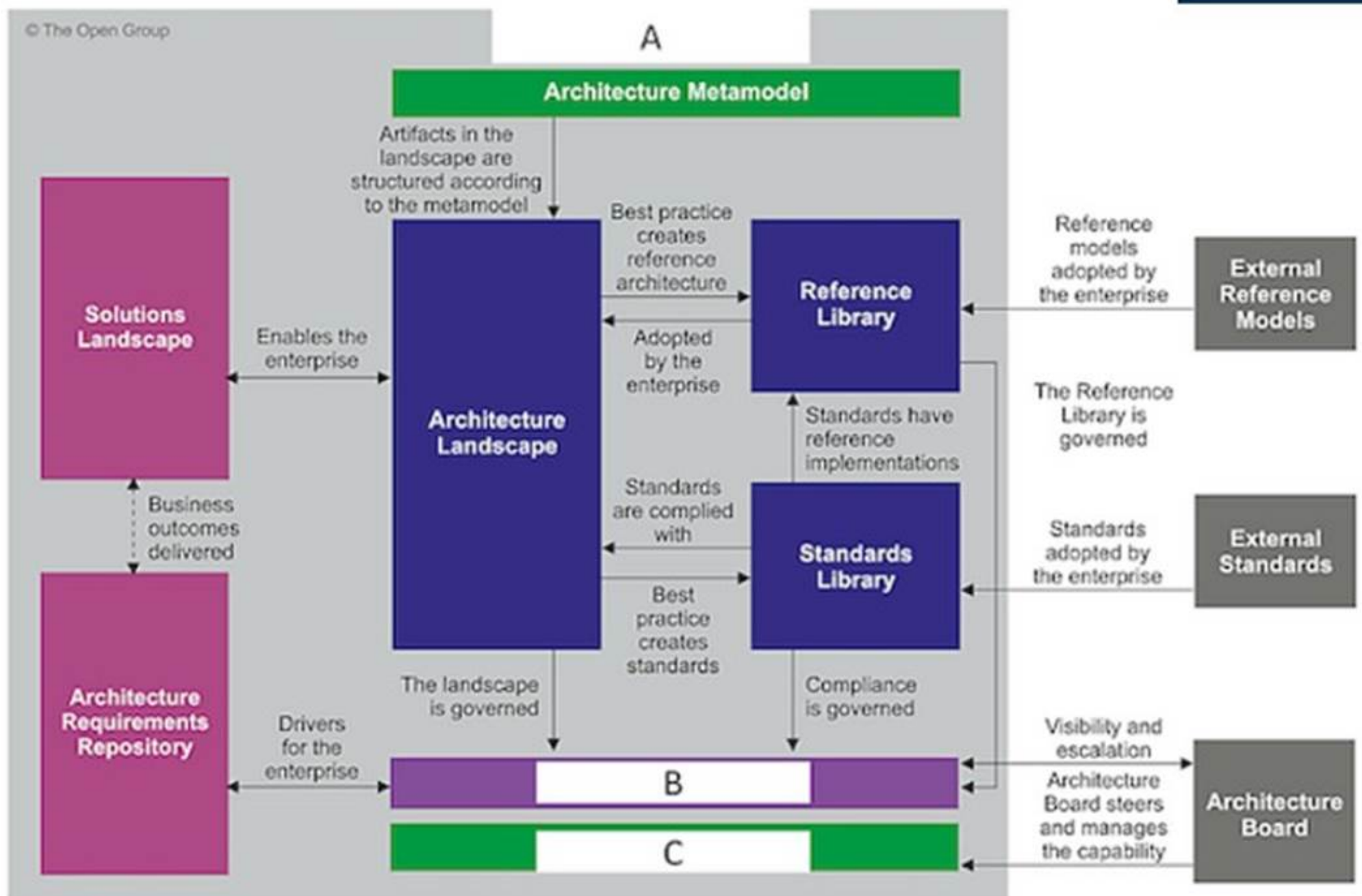
Answer: B

Explanation:

The statement "Projects may cycle between ADM phases, in planned cycles covering multiple phases" illustrates the concept of iteration, which is the process of repeating the ADM phases or steps within a phase to refine the architecture outputs and address the changing requirements and stakeholder concerns. Iteration can occur at different levels of granularity and scope, such as within a single phase, across multiple phases, or across the entire ADM cycle. Iteration can also be applied to different architecture domains, such as business, data, application, and technology. Iteration is a key feature of the ADM that enables the development of architectures that are fit for purpose, adaptable, and responsive to change. References: : The TOGAF Standard, Version 9.2, Part III: ADM Guidelines and Techniques, Chapter 24: Applying Iteration to the ADM

NEW QUESTION 4

- (Topic 1)
 Exhibit:



Consider the illustration. What are the items labelled A, B, and C?

- A. A-Enterprise Repository, B-Governance Repository, C-Board Repository
- B. A-Architecture Repository, B-Governance Repository, C-Architecture Capability
- C. A-Architecture Repository, B-Governing Board, C-Enterprise Capability
- D. A-Enterprise Repository, B-Board repository, C-Enterprise Capability

Answer: C

Explanation:

? A-Architecture Repository: This is a part of the Architecture Metamodel that contains artifacts structured according to the metamodel. It includes the Architecture Landscape which is adopted by the enterprise and governed by certain standards and practices.
 ? B-Governing Board: The Governing Board ensures visibility and escalation, meaning it oversees and manages the capability of the architecture landscape. It plays a crucial role in governance.
 ? C-Enterprise Capability: This refers to how well an enterprise can execute its mission, meet business objectives or satisfy its stakeholders?? needs and expectations. It??s influenced by both internal factors (like resources, processes) and external ones (like market trends).
 References: TOGAF Version 9.1, Chapter 34: 1

NEW QUESTION 5

- (Topic 1)

Which ADM phase focuses on defining the problem to be solved, identifying the stakeholders, their concerns, and requirements?

- A. Phase
- B. Preliminary Phase
- C. Phase
- D. Phase A

Answer: D

Explanation:

Phase A: Architecture Vision is the first phase of the Architecture Development Method (ADM) cycle, which is the core of the TOGAF standard. The main purpose of this phase is to define the scope and approach of the architecture development, and to create the Architecture Vision, which is a high-level description of the desired outcomes and benefits of the proposed architecture. To achieve this purpose, this phase focuses on defining the problem to be solved, identifying the stakeholders, their concerns, and requirements, and establishing the business goals and drivers that motivate the architecture work. This phase also involves obtaining the approval and commitment of the sponsors and other key stakeholders, and initiating the Architecture Governance process. References: : The TOGAF Standard, Version 9.2, Part II: Architecture Development Method (ADM), Chapter 5: Introduction to the ADM : The TOGAF Standard, Version 9.2, Part II: Architecture Development Method (ADM), Chapter 18: Phase A: Architecture Vision : The TOGAF Standard, Version 9.2, Part II: Architecture Development Method (ADM), Chapter 18.3: Inputs : The TOGAF Standard, Version 9.2, Part II: Architecture Development Method (ADM), Chapter 18.4: Steps

NEW QUESTION 6

- (Topic 1)

Complete the following sentence. In the ADM documents which are under development and have not undergone any formal review and approval process are _____.

- A. Called ???draft???
- B. Invalid
- C. In between phases
- D. Known as ???Version 0.1???

Answer: A

Explanation:

In the ADM documents which are under development and have not undergone any formal review and approval process are called ??draft??. This indicates that they are subject to change and refinement as the architecture development progresses.

Reference: The TOGAF® Standard | The Open Group Website, Section 4.2.5 Architecture Deliverables.

NEW QUESTION 7

- (Topic 1)

Consider the following statements.

- * 1. All processes, decision-making, and mechanisms used will be established so as to minimize or avoid potential conflicts of interest.
- * 2. More effective strategic decision-making will be made by C-Level executives and business leaders.
- * 3. All actions implemented and their decision support will be available for inspection by authorized organization and provider parties.
- * 4. Digital Transformation and operations will be more effective and efficient.

Which statements highlight the value and necessity for Architecture Governance to be adopted within organizations?

- A. 1 & 4
- B. 1 & 3
- C. 2 & 4
- D. 2 & 3

Answer: B

Explanation:

Statements 1 and 3 highlight the value and necessity for Architecture Governance to be adopted within organizations. Architecture Governance is the practice and orientation by which Enterprise Architectures and other architectures are managed and controlled at an enterprise-wide level¹². It ensures that architectural decisions are aligned with the organization??s strategy, objectives, and standards. Architecture Governance also involves establishing and maintaining processes, decision-making, and mechanisms to avoid or minimize potential conflicts of interest, such as between different stakeholders, business units, or projects³⁴.

Moreover, Architecture Governance requires transparency and accountability for all actions implemented and their decision support, so that they can be inspected and evaluated by authorized parties, such as auditors, regulators, or customers⁵. References:

- The TOGAF Standard, Version 9.2 - Architecture Governance - The Open Group
- Architecture Governance - The Open Group
- Tutorial: Governance in TOGAF??s Architecture Development Method (ADM)
- Architecture Governance in TOGAF: Ensuring Effective Management and Compliance
- The TOGAF Standard, Version 9.2 - Definitions - The Open Group
- [Architecture Governance in TOGAF: Ensuring Alignment and Control]

NEW QUESTION 8

- (Topic 1)

Which statement best describes iteration and the ADM?

- A. The ADM is iterative within the first cycle and then between phases
- B. The level of detail is defined once and applies to all iterations
- C. The ADM is sequential Iteration is applied within phases
- D. The ADM is iterative, over the whole process between phases and within phases

Answer: D

Explanation:

This statement best describes iteration and the ADM. The ADM is iterative over the whole process between phases and within phases because it allows for feedback loops and refinements at any point in the architecture development and transition process. Iteration enables architects to address changing requirements, assumptions, constraints, and environments; to validate and improve architectures; to manage risks and issues; and to ensure stakeholder satisfaction and value realization. Reference: The TOGAF® Standard | The Open Group Website, Section 3.1 Introduction to the ADM.

NEW QUESTION 9

- (Topic 1)

Which of the following best summarizes the purpose of Enterprise Architecture?

- A. Taking major improvement decisions.
- B. Guiding effective change.
- C. Controlling the bigger changes.
- D. Governing the Stakeholders.

Answer: B

Explanation:

EA applies architecture principles and practices to analyze, design, plan, and implement enterprise analysis that supports digital transformation, IT growth, and the modernization of IT². EA also helps organizations improve the efficiency, timeliness, and reliability of business information, as well as the alignment, agility, and adaptability of the architecture to the changing needs and requirements³. Therefore, the best summary of the purpose of EA is to guide effective change.

References: 1: Enterprise architecture - Wikipedia 2: What is enterprise architecture? A framework for transformation 3: 3 The Purpose of Enterprise Architecture - The Open Group

NEW QUESTION 10

- (Topic 1)

Consider the following ADM phases objectives.

	Objective
1	Develop the Target Data Architecture that enables the Business Architecture and the Architecture Vision
2	Develop the Target Business Architecture that describes how the enterprise needs to operate to achieve the business goals
3	Develop a high-level aspirational vision of the capabilities and business value to be delivered as a result of the proposed Enterprise Architecture
4	Develop the Target Application Architecture that enables the Business Architecture and the Architecture Vision, in a way that addresses the Statement of Architecture Work and stakeholder concerns

Which phase does each objective match?

- A. 1C-2B-3A-4C
- B. 1A-2B-3C-4D
- C. 1B-2D-3A-4C
- D. 1C-2D-3B-4A

Answer: A

Explanation:

? The objectives listed in the question correspond to the objectives of different phases of the TOGAF ADM (Architecture Development Method), which is a method for developing and managing an enterprise architecture¹.

? The ADM consists of nine phases, each with a specific purpose and output. The phases are¹:

? Based on the above definitions, we can match each objective with the corresponding phase as follows:

References:

? 1: The TOGAF Standard, Version 9.2, Chapter 5: Architecture Development Method (ADM)

? 2: The TOGAF Standard, Version 9.2, Chapter 9: Phase C: Information Systems Architectures

? 3: The TOGAF Standard, Version 9.2, Chapter 8: Phase B: Business Architecture

? 4: The TOGAF Standard, Version 9.2, Chapter 7: Phase A: Architecture Vision

NEW QUESTION 10

- (Topic 1)

What is present in all phases within the ADM and should be identified, classified and mitigated before starting a transformation effort?

- A. Budgetary constraints
- B. Risk
- C. Schedule constraints
- D. Information gaps

Answer: B

Explanation:

According to the TOGAF Standard, 10th Edition, risk is present in all phases within the Architecture Development Method (ADM), and it should be identified, classified, and mitigated before starting a transformation effort ¹. Risk is defined as ??the effect of uncertainty on objectives?? ², and it can have positive or negative impacts on the architecture project. Risk management is a technique that helps to assess and address the potential risks that may affect the achievement of the architecture objectives, and to balance the trade-offs between opportunities and threats. Risk management is applied throughout the ADM cycle, from the Preliminary Phase to the Requirements Management Phase, and it is integrated with other techniques, such as stakeholder management, business transformation readiness assessment, gap analysis, and migration planning ¹. The other options are not correct, as they are not present in all phases within the ADM, and they are not necessarily identified, classified, and mitigated before starting a transformation effort. Budgetary constraints are the limitations on the financial resources available for the architecture project, and they are usually considered in Phase E: Opportunities and Solutions, and Phase F: Migration Planning ³. Schedule constraints are the limitations on the time available for the architecture project, and they are also usually considered in Phase E and F ³. Information gaps are the missing or incomplete data or knowledge that may affect the architecture project, and they are usually identified in Phase B: Business Architecture, Phase C: Information Systems Architecture, and Phase D: Technology Architecture . References: 1: TOGAF Standard, 10th Edition, Part III: ADM Guidelines and Techniques, Chapter 32: Risk Management. 2: TOGAF Standard, 10th Edition, Part I: Introduction, Chapter 3: Definitions. 3: TOGAF Standard, 10th Edition, Part II: Architecture Development Method, Chapter 16: Phase E: Opportunities and Solutions, and Chapter 17: PhaseF: Migration Planning. : TOGAF Standard, 10th Edition, Part II: Architecture Development Method, Chapter 13: Phase B: Business Architecture, Chapter 14: Phase C: Information Systems Architecture, and Chapter 15: Phase D: Technology Architecture.

NEW QUESTION 15

- (Topic 1)

Which of the following best describes the purpose of the Architecture Requirements Specification?

- A. It contains an assessment of the current architecture requirements

- B. It provides a set of statements that outline what a project must do to comply with the architecture
- C. It is sent from the sponsor and triggers the start of an architecture development cycle
- D. It defines the scope and approach to complete an architecture project

Answer: B

Explanation:

The Architecture Requirements Specification is one of the TOGAF deliverables that provides a set of quantitative statements that outline what an implementation project must do in order to comply with the architecture¹². It is a companion to the Architecture Definition Document, which provides a qualitative view of the solution and aims to communicate the intent of the architect. The Architecture Requirements Specification provides a quantitative view of the solution, stating measurable criteria that must be met during the implementation of the architecture³. It typically forms a major component of an implementation contract or contract for more detailed Architecture Definition⁴. References:

- Deliverable: Architecture Requirements Specification - The Open Group
- Architecture Requirements Specification - Visual Paradigm Community Circle
- The TOGAF Standard, Version 9.2 - Definitions - The Open Group
- The TOGAF Standard, Version 9.2 - Architecture Requirements Specification - The Open Group

NEW QUESTION 16

- (Topic 1)

Which of the following statements about architecture partitioning are correct*? 1 Partitions are used to simplify the management of the Enterprise Architecture 2

Partitions are equivalent to architecture levels

3 Partitions enable different teams to work on different element of the architecture at the same time.

4 Partitions reflect the organization's structure

- A. 2 & 3
- B. 1 & 3
- C. 1 & 4
- D. 2 & 4

Answer: B

Explanation:

Statements 1 and 3 about architecture partitioning are correct. Architecture partitioning is the technique of dividing an architecture into smaller and more manageable parts that can be developed, maintained, and governed independently. Partitions are used to simplify the management of the Enterprise Architecture and to enable different teams to work on different elements of the architecture at the same time. Partitions are not equivalent to architecture levels, which are different degrees of abstraction or detail in an architecture. Partitions do not necessarily reflect the organization's structure, which may change over time or differ from the architecture's scope and boundaries. Reference: The TOGAF® Standard | The Open Group Website, Section 2.5 Architecture Partitioning.

NEW QUESTION 17

- (Topic 1)

In which phase of the ADM cycle do building blocks become implementation-specific?

- A. Phase B
- B. Phase C
- C. Phase D
- D. Phase E

Answer: D

Explanation:

Building blocks are reusable components of business, IT, or architectural capability that can be combined to deliver architectures and solutions. Building blocks can be defined at various levels of detail, depending on the stage of architecture development. In the earlier phases of the ADM cycle (A to D), building blocks are defined in generic terms, such as logical or physical, to provide a high-level view of the architecture. In Phase E: Opportunities and Solutions, building blocks become implementation-specific, meaning that they are linked to specific products, standards, technologies, and vendors that are available in the market. This phase also identifies the delivery vehicles, such as projects, programs, or portfolios, that will realize the building blocks¹² References: 1: The TOGAF Standard, Version 9.2, Part II: Architecture Development Method (ADM), Chapter 23: Phase E: Opportunities and Solutions 2: The TOGAF Standard, Version 9.2, Part IV: Architecture Content Framework, Chapter 36: Building Blocks

NEW QUESTION 18

- (Topic 1)

In which part of the ADM cycle do building block gaps become associated with work packages that will address the gaps?

- A. Phases G and H
- B. Phases F
- C. Phases B C and D
- D. Phase E

Answer: D

Explanation:

In Phase E of the ADM cycle, building block gaps become associated with work packages that will address the gaps. This phase involves creating an Implementation and Migration Plan that defines a set of work packages and Transition Architectures that will deliver the Target Architecture. Reference: The TOGAF® Standard | The Open Group Website, Section 3.2.5 Phase E: Opportunities & Solutions.

NEW QUESTION 23

- (Topic 1)

What is used to structure architectural information in an orderly way so that it can be processed to meet stakeholder needs?

- A. A Stakeholder Map

- B. An Architecture Framework
- C. Content Metamodel
- D. An EA Library

Answer: C

Explanation:

? A content metamodel is a formal structure that defines the types of entities and relationships that are used to capture, store, filter, query, and represent architectural information in a way that supports consistency, completeness, and traceability¹².

? A stakeholder map is a tool that identifies and analyzes the key stakeholders and their interests, influence, and expectations in relation to the architecture³. It is not used to structure architectural information, but rather to understand the stakeholder needs and concerns.

? An architecture framework is a set of principles, guidelines, standards, and tools that provide a common structure and methodology for developing architectures⁴. It is not used to structure architectural information, but rather to guide the architecture development process and ensure alignment with the business strategy and objectives.

? An EA library is a repository that stores and manages the architecture artifacts, deliverables, and other relevant information produced and consumed during the architecture development and governance. It is not used to structure architectural information, but rather to provide access, security, and version control for the architecture content.

References: 1: The TOGAF Standard, Version 9.2 - Content Metamodel 2: TOGAF 9.2 Content Metamodel Framework - A Quick Guide - KnowledgeHut 3: The TOGAF Standard, Version 9.2 - Stakeholder Management 4: The TOGAF Standard, Version 9.2 - Architecture Framework : The TOGAF Standard, Version 9.2 - Architecture Repository

NEW QUESTION 26

- (Topic 1)

Consider the following ADM phases objectives.

Objective

1- Determine whether an incremental approach is required, and if so identify Transition Architectures that will deliver continuous business value

2- Generate the initial complete version of the Architecture Roadmap, based upon the gap analysis and candidate Architecture Roadmap components from Phases B, C, and D

3- Finalize the Architecture Roadmap and the supporting Implementation and Migration Plan

4- Ensure that the business value and cost of work packages and Transition Architectures is understood by key stakeholders

Which phase does each objective match?

- A. 1E-2F-3E-4F
- B. 1G-2E-3F-4F
- C. 1E-2E-3F-4F
- D. 1F-2E-3F-4G

Answer: B

Explanation:

According to the TOGAF standard, the objectives of each ADM phase are as follows¹:

•Phase E: Opportunities and Solutions

oDetermine whether an incremental approach is required, and if so identify Transition Architectures that will deliver continuous business value

oIdentify and group major work packages within the Architecture Roadmap

oIdentify and group major implementation projects to realize the Architecture Roadmap oIdentify dependencies between increments and projects

oEstimate cost, benefit, and risk at a high level for each increment and project oConduct initial prioritization and sequencing of the Architecture Roadmap and projects

•Phase F: Migration Planning

oGenerate the initial complete version of the Architecture Roadmap, based upon the gap analysis and candidate Architecture Roadmap components from Phases B, C, and D oConfirm the Transition Architectures with relevant stakeholders

oCreate the Implementation and Migration Plan, including Transition Architectures, work packages, projects, and other activities

oConfirm and agree the Architecture Roadmap and Implementation and Migration Plan with relevant stakeholders

•Phase G: Implementation Governance

oFinalize the Architecture Roadmap and the supporting Implementation and Migration Plan oEnsure conformance with the Target Architecture by implementation projects

oPerform appropriate Architecture Governance functions for the solution and any implementation-driven architecture Change Requests

oEnsure that the architecture lifecycle is maintained

oEnsure that the Architecture Governance Framework is executed

•Phase H: Architecture Change Management

oEnsure that the business value and cost of work packages and Transition Architectures is understood by key stakeholders

oManage risks and issues related to the Architecture Roadmap and Implementation and Migration Plan

oMonitor the implementation projects and Transition Architectures oManage changes to the architecture baseline

oManage changes to the Architecture Capability

Therefore, the correct matching of the objectives and the phases is:

•1G: Determine whether an incremental approach is required, and if so identify Transition Architectures that will deliver continuous business value

•2E: Generate the initial complete version of the Architecture Roadmap, based upon the gap analysis and candidate Architecture Roadmap components from Phases B, C, and D

•3F: Finalize the Architecture Roadmap and the supporting Implementation and Migration Plan

•4F: Ensure that the business value and cost of work packages and Transition Architectures is understood by key stakeholders

References: 1: The TOGAF Architecture Development Method

NEW QUESTION 30

- (Topic 1)

Which of the following best describes the class of information known as the Reference Library within the Architecture Repository?

- A. Guidelines and templates used to create new architectures
- B. Specifications to which architectures must conform
- C. A record of the governance activity across the enterprise
- D. Processes to support governance of the Architecture Repository

Answer: A

Explanation:

The class of information known as the Reference Library within the Architecture Repository contains guidelines and templates used to create new architectures. The Reference Library provides a set of resources that can be leveraged or customized for specific architecture development purposes. It includes generic building blocks, patterns, models, standards, frameworks, methods, techniques, best practices, etc. Reference: The TOGAF® Standard | The Open Group Website, Section 2.4 Architecture Repository.

NEW QUESTION 32

- (Topic 1)

Complete the sentence The Architecture Landscape is divided into levels known as _____.

- A. Gaps Plateaus, and Target Architectures
- B. Baselin
- C. Transition and To Be Architectures
- D. Segment Strategic and Capability Architectures
- E. Transitional Complete and incremental Architectures

Answer: C

Explanation:

The Architecture Landscape is divided into levels known as Segment Strategic and Capability Architectures. These levels correspond to different scopes and purposes of architectures within an enterprise. Segment Architectures are architectures that address specific business units, functions, or processes within an enterprise. Strategic Architectures are architectures that provide a high-level view of the enterprise's vision, goals, and direction. Capability Architectures are architectures that address specific business capabilities or services that span multiple segments or domains. Reference: The TOGAF® Standard | The Open Group Website, Section 2.4 Architecture Repository.

NEW QUESTION 36

- (Topic 1)

Which one of the following classes of information within the Architecture Repository would typically contain a list of the applications in use within the enterprise?

- A. Reference Library
- B. Architecture Metamodel
- C. Architecture Landscape
- D. Governance Log

Answer: C

Explanation:

The Architecture Landscape is a class of information within the Architecture Repository that shows an architectural view of the building blocks that are in use within the organization today (the Baseline Architecture), as well as those that are planned for the future (the Target Architecture). The Architecture Landscape typically contains a list of the applications in use within the enterprise, along with their relationships and dependencies, as well as other relevant architectural information. The Architecture Landscape helps to identify opportunities for re-use, consolidation, or retirement of existing applications, as well as gaps or overlaps in the current or future architecture. References: : The TOGAF Standard, Version 9.2, Part IV: Architecture Content Framework, Chapter 34: Architecture Landscape : The TOGAF Standard, Version 9.2, Part VI: Architecture Capability Framework, Chapter 47: Architecture Repository

NEW QUESTION 38

- (Topic 1)

Consider the following statement:

Separate projects may operate their own ADM cycles concurrently, with relationships between the different projects

What does it illustrate?

- A. Implementation governance
- B. Enterprise Architecture
- C. Iteration
- D. Requirements management

Answer: C

Explanation:

The statement illustrates iteration and the ADM. Iteration is the technique of repeating a process or a phase with the aim of improving or refining the outcome. Iteration allows for feedback loops and adaptations at any point in the architecture development and transition process. Separate projects may operate their own ADM cycles concurrently, with relationships between the different projects, to address different aspects or levels of the architecture in an iterative manner. Reference: The TOGAF® Standard | The Open Group Website, Section 3.1 Introduction to the ADM.

NEW QUESTION 42

- (Topic 1)

Complete the sentence. The architecture domains that are considered by the TOGAF standard as subsets of an overall enterprise architecture are Business, Technology,

- A. Logical and Physical
- B. Information and Data
- C. Capability and Segment
- D. Application and Data

Answer: D

Explanation:

These domains provide a consistent way to describe and understand the architecture from different perspectives, such as business, information, and technology¹². Each domain has its own set of concepts, models, views, and artifacts that define the structure and behavior of the architecture within that domain¹².

The other options are incorrect because:

- Logical and Physical are not architecture domains, but rather levels of abstraction that can be applied to any domain. Logical architecture describes the functionality and behavior of the system, while physical architecture describes the implementation and deployment of the system³.
- Information and Data are not distinct architecture domains, but rather aspects of the same domain. Information architecture describes the meaning and context of the data, while data architecture describes the structure and format of the data⁴.
- Capability and Segment are not architecture domains, but rather levels of granularity that can be applied to any domain. Capability architecture describes the current and desired states of a specific business capability, while segment architecture describes a subdivision of the enterprise that has a clear business focus⁵.

References: 1: The TOGAF Standard, Version 9.2 - Definitions 2: TOGAF® Standard — Introduction - Definitions 3: [Logical vs Physical Architecture] 4: [Information Architecture vs Data Architecture] 5: [The TOGAF Standard, Version 9.2 - Applying the ADM Across the Architecture Landscape]

NEW QUESTION 46

- (Topic 1)

Complete the sentence The TOGAF standard covers the development of four architecture domains. Business. Data, Technology and _____.

- A. Segment
- B. Transition
- C. Capability
- D. Application

Answer: D

Explanation:

The TOGAF standard covers the development of four architecture domains: Business, Data, Technology and Application. These domains represent different aspects of an enterprise's architecture and provide a consistent way of describing, analyzing, and designing them. Reference: The TOGAF® Standard | The Open Group Website, Section 2.2 Architecture Development Method (ADM).

NEW QUESTION 50

- (Topic 1)

What component of the Architecture Repository represents architecture requirements agreed with the Architecture Board?

- A. Reference Library
- B. Architecture Capability
- C. Architecture Requirements Repository
- D. Governance Log

Answer: C

Explanation:

The Architecture Requirements Repository stores all the requirements that are output of the architecture development cycle, as well as the requirements that are input to the architecture development cycle¹. The Architecture Requirements Repository includes the following types of requirements¹:

- Stakeholder Requirements: These are the high-level requirements and expectations of the stakeholders, derived from the business drivers, goals, and objectives. They are captured and refined in the Architecture Vision phase and the Requirements Management phase.
- Architecture Requirements: These are the detailed requirements that specify what the architecture must do or deliver to meet the stakeholder requirements. They are derived and refined in the Business, Information Systems, and Technology Architecture phases.
- Implementation and Migration Requirements: These are the detailed requirements that specify what the implementation and migration projects must do or deliver to realize the architecture. They are derived and refined in the Opportunities and Solutions and Migration Planning phases.

The Architecture Requirements Repository is used to manage the architecture requirements throughout the architecture lifecycle, ensuring their traceability, consistency, and compliance¹. The Architecture Board is the authority that reviews and approves the architecture requirements, as well as the architecture deliverables and artifacts, as part of the architecture governance process².

References: 1: Architecture Requirements Repository 2: Architecture Board

NEW QUESTION 53

- (Topic 1)

Which of the following is included as part of Architecture Governance¹?

- A. Ensuring compliance with internal and external standards and regulatory obligations
- B. Creating and maintaining the Statement of Architecture Work through out the ADM cycle
- C. Managing Stakeholders and their requirements
- D. Interacting with the CxO level on Enterprise Architecture

Answer: A

Explanation:

Ensuring compliance with internal and external standards and regulatory obligations is one of the activities included as part of Architecture Governance. Architecture Governance is the practice and orientation by which enterprise architectures and other architectures are managed and controlled at an enterprise-wide level. It involves establishing processes, roles, responsibilities, policies, and standards to ensure that architectures are aligned with the enterprise's strategy and objectives, and meet the quality and performance requirements. Reference: The TOGAF® Standard | The Open Group Website, Section 3.3.6 Architecture Governance.

NEW QUESTION 54

- (Topic 1)

Which of the following statements about architecture partitioning is correct?

- A. Partitions are used to simplify the management of the Enterprise Architecture.
- B. Partitions are equivalent to architecture levels.
- C. Partitions reflect the organization's structure.
- D. Partitions are defined and assigned to agile Enterprise Architecture teams.

Answer: A

Explanation:

Based on the web search results, architecture partitioning is a technique that divides the Enterprise Architecture into smaller and manageable segments or groups, based on various classification criteria, such as subject matter, time, maturity, volatility, etc.¹² Architecture partitioning is used to simplify the development and management of the Enterprise Architecture, by reducing complexity, improving governance, enhancing reusability, and increasing alignment and agility¹². Therefore, the statement that partitions are used to simplify the management of the Enterprise Architecture is correct.

The other statements are incorrect because:

- Partitions are not equivalent to architecture levels. Architecture levels are different layers of abstraction that describe the Enterprise Architecture from different perspectives, such as strategic, segment, and capability³. Partitions are subsets of architectures that are defined within or across the levels, based on specific criteria¹.
- Partitions do not necessarily reflect the organization's structure. The organization's structure is one possible criterion for partitioning the architecture, but it is not the only one. Other criteria, such as business function, product, service, geography, etc., can also be used to partition the architecture¹².
- Partitions are not defined and assigned to agile Enterprise Architecture teams. Agile Enterprise Architecture is an approach that applies agile principles and practices to the architecture work, such as iterative development, frequent feedback, adaptive planning, and continuous delivery⁴. Partitions are not a specific feature of agile Enterprise

Architecture, but a general technique that can be applied to any architecture method or framework, including TOGAF¹².

References: 1: The TOGAF Standard, Version 9.2 - Architecture Partitioning 2: TOGAF® Standard — Introduction - Architecture Partitioning 3: [The TOGAF Standard, Version 9.2 - Applying the ADM Across the Architecture Landscape] 4: TOGAF® Standard — Introduction - Definitions - The Open Group

NEW QUESTION 59

- (Topic 1)

Which of the following is a responsibility of an Architecture Board?

- A. Determining the scope of an architecture compliance review
- B. Allocating resources for architecture projects
- C. Conducting assessments of the maturity level of architecture discipline within the organization
- D. Achieving consistency between sub-architectures

Answer: D

Explanation:

One of the key responsibilities of an Architecture Board within the context of TOGAF is to achieve consistency between sub-architectures. This board is typically responsible for overseeing the development and maintenance of the enterprise architecture, ensuring that it aligns with the organization's overall strategy and objectives. They play a critical role in ensuring that all sub-architectures (like Business Architecture, Data Architecture, Application Architecture, and Technology Architecture) work together cohesively and support the overall enterprise architecture vision and strategy.

NEW QUESTION 61

- (Topic 1)

Complete the sentence When considering agile development Architecture to Support Project will identify what products the Enterprise needs the boundary of the products and what constraints a product owner has. this defines the Enterprise's _____.

- A. operations
- B. backlog
- C. workflow management
- D. lifecycle economics

Answer: B

Explanation:

When considering agile development, Architecture to Support Project will identify what products the enterprise needs, the boundary of the products, and what constraints a product owner has. This defines the enterprise's backlog. A backlog is a list of features or tasks that need to be done to deliver a product or service. It is prioritized by the product owner based on the value and urgency of each item. Reference: The TOGAF® Standard | The Open Group Website, Section 3.3.5 Architecture to Support Project.

NEW QUESTION 65

- (Topic 1)

Which of the following are the four purposes that typically frame the planning horizon, depth and breadth of an Architecture Project, and the contents of the EA Repository-?

- A. General Foundational Subordinate and Superior Architecture
- B. Segment, Capabilit
- C. Enterprise and End-to-end Target Architecture
- D. Avant-Garde Big-Bang, Discreet and Cohesive
- E. Strategy Portfolio Project Solution Delivery

Answer: D

Explanation:

Strategy Portfolio Project Solution Delivery are the four purposes that typically frame the planning horizon, depth and breadth of an Architecture Project, and the contents of the EA Repository. They correspond to different levels of abstraction and granularity in the architecture development process. Reference: The TOGAF® Standard, Version 9.2 - The Open Group, Section 2.4 Architecture Repository.

NEW QUESTION 68

- (Topic 1)

Complete the sentence A business scenario describes _____

- A. shortfalls between the Baseline and Target Architectures
- B. business domain gaps such as cross-training requirements

- C. business and technology environment in which those problems occur
- D. general rules and guidelines for the architecture being developed

Answer: C

Explanation:

A business scenario describes business and technology environment in which those problems occur. It provides a realistic context for identifying and addressing business problems and opportunities, as well as their impact on the enterprise's architecture. Reference: The TOGAF® Standard | The Open Group Website, Section 3.3.1 Business Scenarios.

NEW QUESTION 69

- (Topic 1)

According to the TOGAF standard, what term describes an individual with an interest in a system?

- A. stakeholder
- B. consumer
- C. lead architect
- D. sponsor

Answer: A

Explanation:

According to the TOGAF Standard, 10th Edition, a stakeholder is ??an individual with an interest in a system?? 1. A stakeholder can be anyone who is affected by the system, or who can influence or be influenced by the system. Stakeholders can have different roles, perspectives, and concerns regarding the system, and they can be internal or external to the organization. Stakeholder management is a technique that helps to identify, analyze, and engage the stakeholders of an architecture project, and to address their needs and expectations 2. The other options are not correct, as they are not the term used by the TOGAF Standard to describe an individual with an interest in a system. A consumer is ??an individual or group that uses a product or service?? 1. A lead architect is ??an individual who is responsible for leading the development of an architecture?? 1. A sponsor is ??an individual who provides funding and support for an architecture project?? 1. References: 1: TOGAF Standard, 10th Edition, Part I: Introduction, Chapter 3: Definitions. 2: TOGAF Standard, 10th Edition, Part III: ADM Guidelines and Techniques, Chapter 24: Stakeholder Management.

NEW QUESTION 71

- (Topic 1)

Consider the following statements:

* 1. Groups of countries, governments, or governmental organizations (such as militaries) working together to create common or shareable deliverables or infrastructures

* 2. Partnerships and alliances of businesses working together, such as a consortium or supply chain

What are those examples of according to the TOGAF Standard?

- A. Enterprises
- B. Organizations
- C. Business Units
- D. Architectures Scopes

Answer: D

Explanation:

According to the TOGAF standard, the two statements provided refer to different scopes within which architecture can be developed:

? Groups of countries, governments, or governmental organizations working together typically align with broader, often international, scopes of architecture that transcend individual enterprise boundaries.

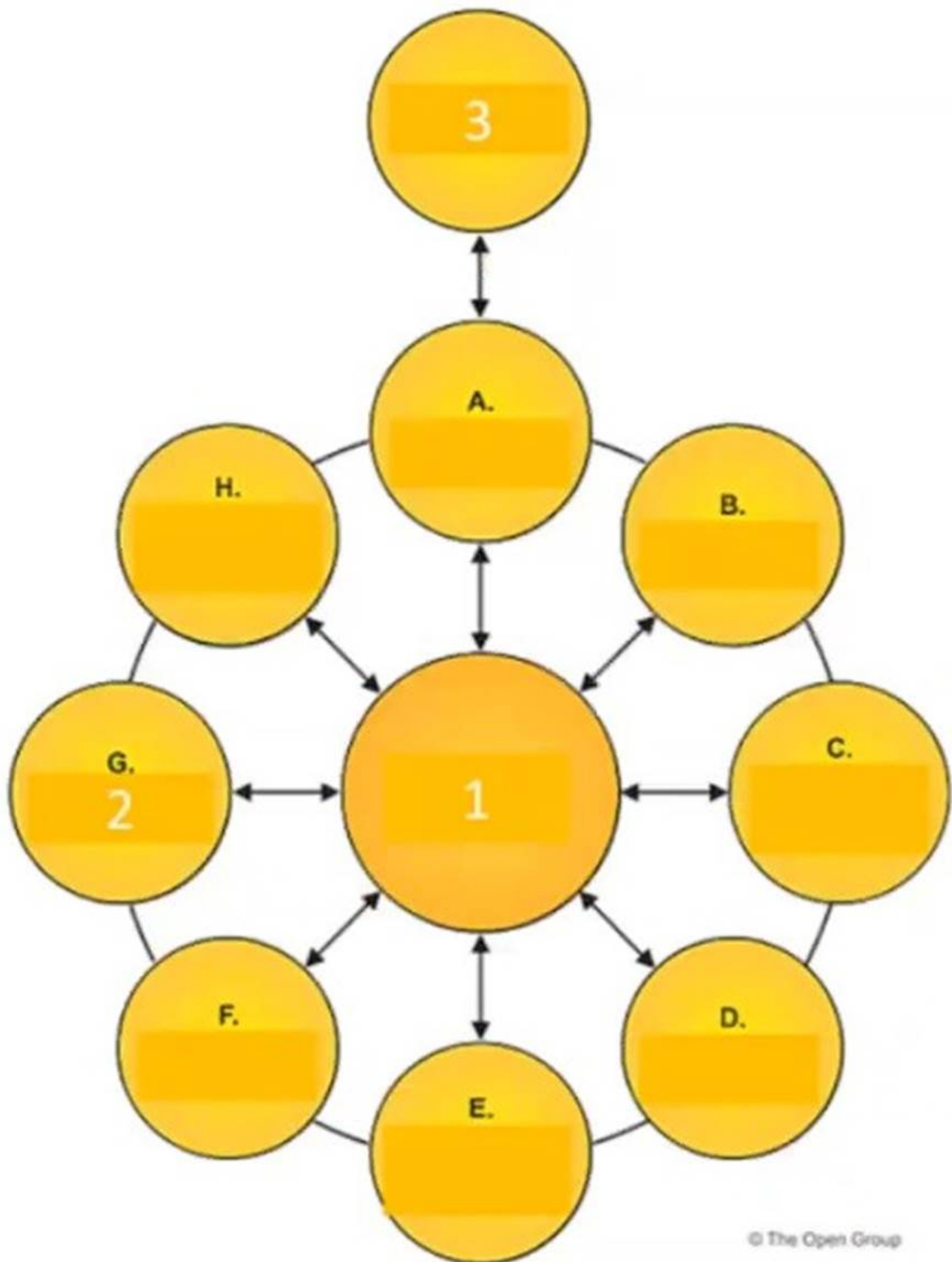
? Partnerships and alliances of businesses working together, such as a consortium or supply chain, refer to collaborative efforts that can define architecture at a scope involving multiple enterprises.

In both cases, the term "Architectures Scopes" is appropriate because it reflects the varying levels and contexts in which architectures can be defined, ranging from single business units to collaborative inter-organizational efforts.

NEW QUESTION 76

- (Topic 1)

Exhibit



Consider the illustration showing an architecture development cycle Which description matches the phase of the ADM labeled as item 1?

- A. Conducts implementation planning for the architecture defined in previous phases
- B. Provides architectural oversight for the implementation
- C. Operates the process of managing architecture requirements
- D. Establishes procedures for managing change to the new architecture

Answer: C

Explanation:

? The illustration shows an architecture development cycle based on the TOGAF ADM (Architecture Development Method), which is a method for developing and

managing an enterprise architecture1.

? The ADM consists of nine phases, each with a specific purpose and output. The phases are1:

? In addition to these phases, there is a central process called Requirements Management, which is labeled as item 1 in the illustration. This process operates throughout the ADM cycle, and its purpose is to manage the architecture requirements throughout the architecture development, ensuring that they are aligned with the business requirements and the stakeholder concerns2.

? Therefore, the description that matches the phase of the ADM labeled as item 1 is C. Operates the process of managing architecture requirements. References:

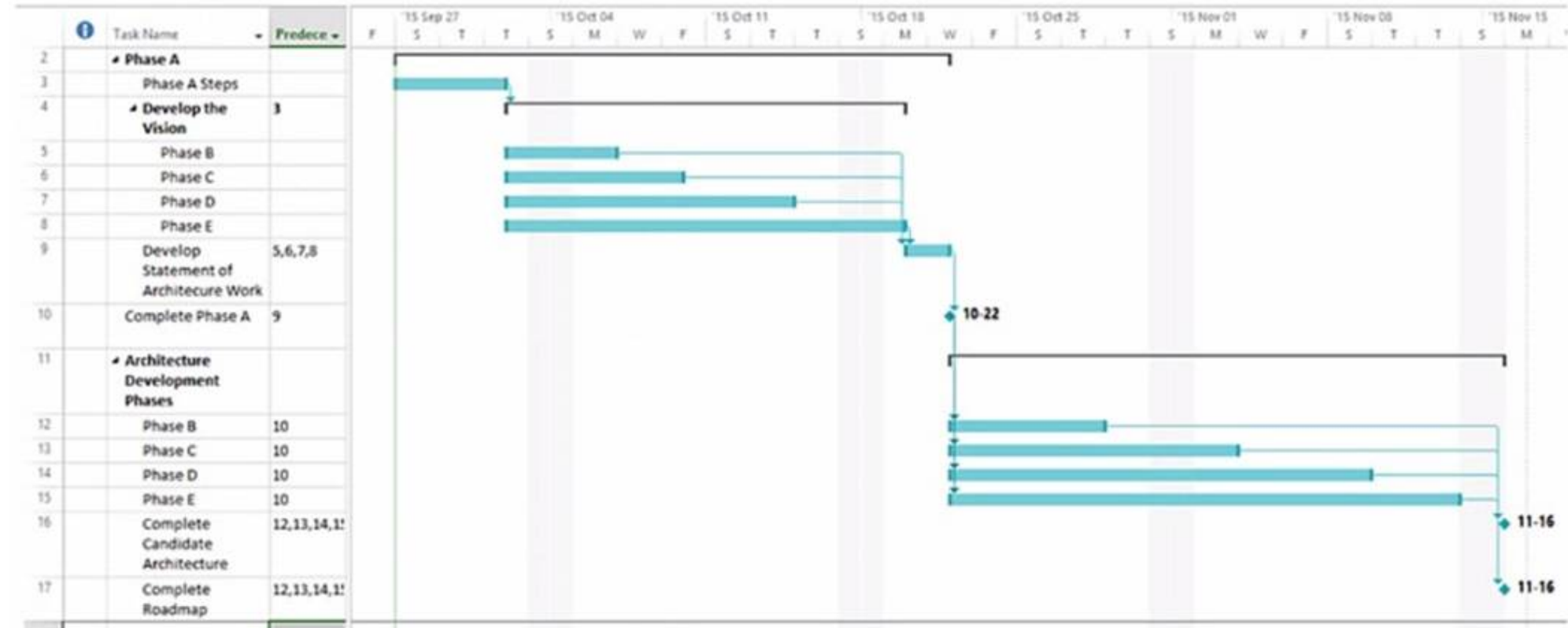
? 1: The TOGAF Standard, Version 9.2, Chapter 5: Architecture Development Method (ADM)

? 2: The TOGAF Standard, Version 9.2, Chapter 17: Requirements Management

NEW QUESTION 79

- (Topic 1)

Consider the following chart:



- Which important concept for Enterprise Architecture Practitioners does it illustrate?
- A. Enterprise Architects must use Gantt charts to communicate with Stakeholders.
 - B. An Enterprise Architecture must be developed in phases with a limited fixed duration.
 - C. ADM phases must be run in a sequenced approach to produce the Architecture.
 - D. ADM phases must be run simultaneously until the relevant information has been produced.

Answer: C

Explanation:

The chart shown is a Gantt chart, which is commonly used for project management to illustrate a project schedule. In the context of TOGAF (The Open Group ArchitectureFramework), which is a framework for enterprise architecture, this Gantt chart is demonstrating the sequenced approach to the Architecture Development Method (ADM). The ADM is the core process of TOGAF which provides a tested and repeatable process for developing architectures. The ADM is described as being iterative, over the whole process, between phases, and within phases. For each iteration of the ADM, a fresh decision must be taken about each of the parameters (scope, granularity, time period, and architecture assets).

The ADM consists of a number of phases that have to be followed in sequence:

- ? Preliminary Phase: Framework and principles
- ? Phase A: Architecture Vision
- ? Phase B: Business Architecture
- ? Phase C: Information Systems Architectures, including Data and Application Architectures
- ? Phase D: Technology Architecture
- ? Phase E: Opportunities and Solutions
- ? Phase F: Migration Planning
- ? Phase G: Implementation Governance
- ? Phase H: Architecture Change Management
- ? Requirements Management

Each phase is dependent on the outputs of the previous phase and the Requirements Management phase runs throughout. The Gantt chart clearly shows the dependency and sequence in which these phases occur, implying that a structured approach is followed to produce the enterprise architecture.

References:

- ? The TOGAF Standard, Version 9.2, a standard of The Open Group
- ? The TOGAF documentation available at <https://publications.opengroup.org/standards/architecture> and <https://publications.opengroup.org/guides/architecture>

NEW QUESTION 81

- (Topic 1)

What are the following activities part of?

- . Risk classification
- . Risk identification
- . Initial risk assessment

- A. Security Architecture
- B. Phase A
- C. Phase G
- D. Risk Management

Answer: D

Explanation:

Risk management is a generic technique that can be applied across all phases of the Architecture Development Method (ADM), as well as in the Preliminary Phase and the Requirements Management Phase². Risk management involves the following steps¹:

- Risk identification: This step involves identifying the potential risks that may affect the architecture project, such as technical, business, organizational, environmental, or legal risks. The risks can be identified through various sources, such as stakeholder interviews, workshops, surveys, checklists, historical data, or expert judgment.
- Risk classification: This step involves categorizing the risks based on their nature, source, impact, and priority. The risks can be classified according to different criteria, such as time, cost, scope, quality, security, or compliance. The classification helps in prioritizing the risks and allocating resources and efforts to address them effectively.
- Initial risk assessment: This step involves assessing the likelihood and impact of each risk, and determining the initial level of risk. The likelihood is the probability of the risk occurring, and the impact is the severity of the consequences if the risk occurs. The initial level of risk is the product of the likelihood and impact, and it indicates the urgency and importance of the risk. The initial risk assessment helps in identifying the most critical risks that need immediate attention and mitigation.

References: 1: The TOGAF Standard, Version 9.2 - Risk Management 2: TOGAF ADM: Top 10 techniques – Part 9: Risk Management

NEW QUESTION 84

- (Topic 1)

Complete the sentence. Actions arising from the Business Transformation Readiness Assessment technique should be incorporated in the

- A. Architecture Requirements Specification
- B. Architecture Roadmap
- C. Implementation Governance Model
- D. Implementation and Migration Plan

Answer: D

Explanation:

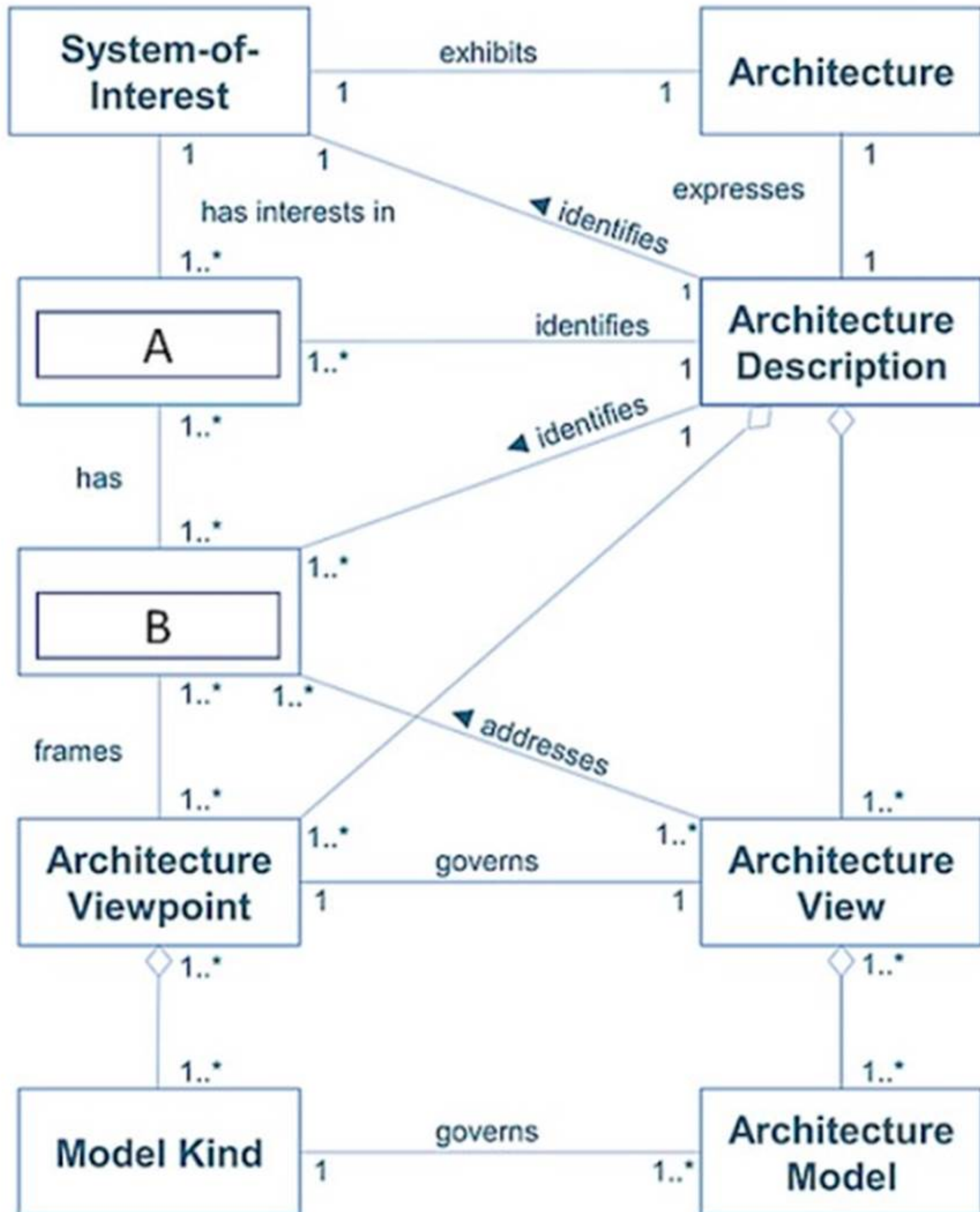
The Business Transformation Readiness Assessment technique is used to evaluate the readiness of the organization to undergo change and to identify the actions needed to increase the likelihood of a successful business transformation. These actions should be incorporated in the Implementation and Migration Plan, which is the detailed plan to transition from the Baseline Architecture to the Target Architecture. The Implementation and Migration Plan also includes the Transition Architectures, the Architecture Building Blocks, the Work Packages, the Implementation Governance Model, and the Architecture Contract¹²

References: 1: The TOGAF Standard, Version 9.2, Part III: ADM Guidelines and Techniques, Chapter 27: Business Transformation Readiness Assessment 2: The TOGAF Standard, Version 9.2, Part II: Architecture Development Method (ADM), Chapter 21: Phase F: Migration Planning

NEW QUESTION 87

- (Topic 1)

Exhibit:



Consider the image showing basic architectural concepts. What are items A and B?

- A. A-Candidate Architecture, B-Trade-off
- B. A-User, B-Requirement
- C. A-Stakeholder, B-Concern
- D. A-Base Architecture, B-Target Architecture

Answer: C

Explanation:

In the context of TOGAF, a stakeholder is any individual, team, or organization who has interests in, or concerns relative to, the outcome of the architecture. Concerns are those interests which pertain to any aspect of the system's functioning, development or operation, including considerations such as performance, reliability, and security¹. References:

- The TOGAF Standard, Version 9.2 - Definitions - The Open Group

NEW QUESTION 90

- (Topic 1)

Which of the following best describes the purpose of the Gap Analysis technique?

- A. To govern the architecture throughout its implementation process
- B. To develop a set of general rules and guidelines for the architecture
- C. To identify items omitted from the Target Architecture
- D. To allocate resources for architecture projects

Answer: C

Explanation:

The purpose of the Gap Analysis technique is similar to the previous question, but with a focus on the Target Architecture. The technique helps to identify the items that are not included or specified in the Target Architecture, such as capabilities, services, components, standards, or technologies. These items may be essential for achieving the vision and goals of the enterprise, or for addressing the stakeholder concerns and requirements. By identifying the items omitted from the Target Architecture, the technique helps to ensure that the architecture is comprehensive, feasible, and realistic.

NEW QUESTION 93

- (Topic 1)

Which section of the TOGAF template for Architecture Principles should describe the relationship to other principles?

- A. Name
- B. Rationale
- C. Statement
- D. Implications

Answer: B

Explanation:

According to the TOGAF template for Architecture Principles, the Rationale section should describe the relationship to other principles, as well as the business benefits and the intentions of adhering to the principle. The Rationale section should use business terminology and point to the similarity of information and technology principles to the principles governing business operations. The Rationale section should also explain how the principle supports the achievement of the business objectives and key architecture drivers. References:

? Architecture Principles Template

? The TOGAF Standard, Version 9.2 - Architecture Principles

? The Open Group Exam OGEA-103 Topic 1 Question 4 Discussion

NEW QUESTION 98

- (Topic 1)

Which of the following best describes purpose of the Business Scenarios?

- A. To identify risk when implementing an architecture project
- B. To identify and understand requirements
- C. To catch errors in a project architecture early
- D. To guide decision making throughout the enterprise

Answer: B

Explanation:

Business scenarios are a technique for capturing, clarifying, and communicating the functional and non-functional requirements of a system. Business scenarios describe the business environment, the actors involved, the desired outcomes, and the processes or rules that govern the behavior of the system. Business scenarios are useful for ensuring that the architecture addresses the real needs and concerns of the stakeholders, and for validating and testing the architecture against expected

situations. Business scenarios are developed in Phase A: Architecture Vision of the ADM cycle, and refined and updated throughout the other phases³

References: ³: The TOGAF Standard, Version 9.2, Part III: ADM Guidelines and Techniques, Chapter 26: Business Scenarios : The TOGAF Standard, Version 9.2, Part II: Architecture Development Method (ADM), Chapter 18: Phase A: Architecture Vision

NEW QUESTION 101

- (Topic 1)

Which of the following is a responsibility of an Architecture Board?

- A. Conducting assessments of the maturity level of architecture discipline within the organization
- B. Allocating resources for architecture projects
- C. Creating the Statement of Architecture Work
- D. Establishing targets for re-use of components

Answer: D

Explanation:

? An Architecture Board is an executive-level group responsible for the review and maintenance of the strategic architecture and all of its sub-architectures¹. It is a key element in a successful Architecture Governance strategy².

? An Architecture Board is typically made responsible, and accountable, for achieving some or all of the following goals²:

? Therefore, the correct answer is option D, which captures one of the goals of an Architecture Board as stated in the TOGAF Standard, Version 9.2².

? Option A is incorrect, because conducting assessments of the maturity level of architecture discipline within the organization is not a direct responsibility of an

Architecture Board, but rather a part of the Architecture Capability Framework³.

? Option B is incorrect, because allocating resources for architecture projects is not a direct responsibility of an Architecture Board, but rather a part of the Architecture Governance Framework⁴.

? Option C is incorrect, because creating the Statement of Architecture Work is not a direct responsibility of an Architecture Board, but rather a part of the Architecture Development Method⁵. References:

? 1: Architecture Board - The Open Group³

? 2: TOGAF Standard, Version 9.2 - Part VI: Architecture Governance Framework - Architecture Board

? 3: TOGAF Standard, Version 9.2 - Part VI: Architecture Governance Framework - Architecture Capability Framework

? 4: TOGAF Standard, Version 9.2 - Part VI: Architecture Governance Framework - Architecture Governance Framework

? 5: TOGAF Standard, Version 9.2 - Part II: Architecture Development Method - Phase A: Architecture Vision

NEW QUESTION 103

- (Topic 1)

Consider the following statements:

* 1. Each contracted party is required to act responsibly to the organization and its stakeholders.

* 2. All decisions taken, processes used, and their implementation will not be allowed to create unfair advantage to any one particular party.

* 3. Digital Transformation and operations will be more effective and efficient.

* 4. Strategic decision-making by C-Level executives and business leaders will be more effective.

Which statements highlight the value and necessity for Architecture Governance to be adopted within organizations?

A. 1 & 2

B. 2 & 3

C. 3 & 4

D. 1 & 4

Answer: A

Explanation:

Architecture governance is the practice of ensuring compliance with the enterprise architecture and its principles, standards, and goals. Architecture governance provides the means to establish, monitor, and control the architecture development and implementation processes, and to resolve any issues or conflicts that may arise. Architecture governance also ensures that all stakeholders are represented and involved in the decision-making process, and that their interests and concerns are balanced and aligned. Statements 1 and 2 highlight the value and necessity for architecture governance to be adopted within organizations, as they emphasize the importance of responsibility, accountability, fairness, and transparency in the architectural activities. Statements 3 and 4 are more related to the benefits and outcomes of having a good enterprise architecture, rather than the governance aspect. References: : The TOGAF Standard, Version 9.2, Part VI: Architecture Capability Framework, Chapter 50: Architecture Governance : The TOGAF Standard, Version 9.2, Part III: ADM Guidelines and Techniques, Chapter 29: Architecture Governance

NEW QUESTION 105

- (Topic 1)

What are the following activities part of?

• Initial risk assessment

• Risk mitigation and residual risk assessment

• Risk monitoring

A. Risk Management

B. Phase A

C. Security Architecture

D. Phase C

Answer: A

Explanation:

The following activities are part of Risk Management:

? Initial risk assessment

? Risk mitigation and residual risk assessment

? Risk monitoring

Risk Management is the process of identifying, assessing, and responding to risks that may affect the achievement of the enterprise's objectives. Risk Management involves balancing positive and negative outcomes resulting from the realization of either opportunities or threats. Reference: The TOGAF® Standard | The Open Group Website, Section 3.3.3 Risk Management.

NEW QUESTION 109

- (Topic 1)

Complete the sentence. The four purposes that typically frame the planning horizon, depth and breadth of an Architecture Project, and the contents of the EA Repository are Strategy, Portfolio,

A. Project, and Solution Delivery.

B. Subordinate, and Superior Architecture.

C. Discreet, and Cohesive.

D. Segment, and End-to-end Target Architecture.

Answer: D

Explanation:

The planning horizon, depth, and breadth of an Architecture Project, along with the contents of the EA Repository, are typically framed by Strategy, Portfolio, Segment, and End-to-end Target Architecture. The 'Segment' refers to a part of the organization, typically addressed in a Segment Architecture, while 'End-to-end Target Architecture' encompasses the complete view of the planned architecture across the entire organization.

NEW QUESTION 114

- (Topic 2)

Please read this scenario prior to answering the question

You have been appointed as senior architect working for an autonomous driving technology development company. The mission of the company is to build an industry leading unified technology and software platform to support connected cars and autonomous driving.

The company uses the TOGAF Standard as the basis for its Enterprise Architecture (EA) framework. Architecture development within the company follows the purpose-based EA Capability model as described in the TOGAF Series Guide: A Practitioners' Approach to Developing Enterprise Architecture Following the TOGAF® ADM.

An architecture to support strategy has been completed defining a long-range Target Architecture with a roadmap spanning five years. This has identified the need for a portfolio of projects over the next two years. The portfolio includes development of travel assistance systems using swarm data from vehicles on the road.

The current phase of architecture development is focused on the Business Architecture which needs to support the core travel assistance services that the company plans to provide. The core services will manage and process the swarm data generated by vehicles, paving the way for autonomous driving in the future.

The presentation and access to different variations of data that the company plans to offer through its platform poses an architecture challenge. The application portfolio needs to interact securely with various third-party cloud services, and V2X (Vehicle-to-Everything) service providers in many countries to be able to manage the data at scale. The security of V2X is a key concern for the stakeholders. Regulators have stated that the user's privacy be always protected, for example, so that the drivers' journey cannot be tracked or reconstructed by compiling data sent or received by the car.

Refer to the scenario

You have been asked to describe the risk and security considerations you would include in the current phase of the architecture development?

Based on the TOGAF standard which of the following is the best answer?

- A. You will focus on the relationship with the third parties required for the travel assistance systems and define a trust framework
- B. This will describe the relationship with each part
- C. Digital certificates are a key part of the framework and will be used to create trust between parties
- D. You will monitor legal and regulatory changes across all the countries to keep the trust framework in compliance.
- E. You will perform a qualitative risk assessment for the data assets exchanged with partner
- F. This will deliver a set of priorities, high to medium to low, based on identified threats, the likelihood of occurrence, and the impact if it did occur
- G. Using the priorities, you would then develop a Business Risk Model which will detail the risk strategy including classifications to determine what mitigation is enough.
- H. You will focus on data quality as it is a key factor in risk management
- I. You will identify the datasets that need to be safeguarded
- J. For each dataset, you will assign ownership and responsibility for the quality of data needed
- K. A security classification will be defined and applied to each dataset
- L. The dataset owner will then be able to authorize processes that are trusted for a certain activity on the dataset under certain circumstances.
- M. You will create a security domain model so that assets with the same level can be managed under one security policy
- N. Since data is being shared across partners, you will establish a security federation to include the
- O. This would include contractual arrangements, and a definition of the responsibility areas for the data exchanged, as well as security implications
- P. You would undertake a risk assessment determining risks relevant to specific data assets.

Answer: D

Explanation:

A security domain model is a technique that can be used to define the security requirements and policies for the architecture. A security domain is a grouping of assets that share a common level of security and trust. A security policy is a set of rules and procedures that govern the access and protection of the assets within a security domain. A security domain model can help to identify the security domains, the assets within each domain, the security policies for each domain, and the relationships and dependencies between the domains¹

Since the data is being shared across partners, a security federation is needed to establish a trust relationship and a common security framework among the different parties. A security federation is a collection of security domains that have agreed to interoperate under a set of shared security policies and standards. A security federation can enable secure data exchange and collaboration across organizational boundaries, while preserving the autonomy and privacy of each party. A security federation requires contractual arrangements, and a definition of the responsibility areas for the data exchanged, as well as security implications²

A risk assessment is a process that identifies, analyzes, and evaluates the risks that may affect the architecture. A risk assessment can help to determine the likelihood and impact of the threats and vulnerabilities that may compromise the security and privacy of the data assets. A risk assessment can also help to prioritize and mitigate the risks, and to monitor and review the risk situation³

Therefore, the best answer is D, because it describes the risk and security considerations that would be included in the current phase of the architecture development, which is focused on the Business Architecture. The answer covers the security domain model, the security federation, and the risk assessment techniques that are relevant to the scenario. References: 1: The TOGAF Standard, Version 9.2, Part III: ADM Guidelines and Techniques, Chapter 35: Security Architecture and the ADM 2: The TOGAF Standard, Version 9.2, Part IV: Architecture Content Framework, Chapter 38: Security Architecture 3: The TOGAF Standard, Version 9.2, Part III: ADM Guidelines and Techniques, Chapter 32: Risk Management

NEW QUESTION 115

- (Topic 2)

Please read this scenario prior to answering the question

You are the Lead Enterprise Architect at a major agribusiness company. The company's main annual harvest is lentils, a highly valued food grown worldwide. The lentil parasite, broomrape, has been an increasing concern for many years and is now becoming resistant to chemical controls. In addition, changes in climate favor the propagation and growth of the parasite.

As a result, the parasite cannot realistically be exterminated, and it has become pandemic, with lentil yields falling globally.

The CEO appreciates the seriousness of the situation and has set out a change in direction that is effectively a new business for the company. There are opportunities for new products, and new markets. The company will use the fields for another harvest and will cease to process third-party lentils. Thus, the target market will change, and the end-products will be different and more varied. This is a major decision and the CEO has stated a desire to repurpose rather than replace so as to manage the risks and limit the costs.

The company has a mature Enterprise Architecture practice based in its headquarters and uses the TOGAF standard as the method and guiding framework. The practice has an established Architecture Capability, and uses iteration for architecture development. The CIO is the sponsor of the activity.

The CIO has assigned the Enterprise Architecture team to this activity. At this stage there is no shared vision, or requirements. Refer to the scenario

You have been asked to propose the best approach for architecture development to realize the CEO's change in direction for the company.

Based on the TOGAF standard which of the following is the best answer?

- A. You propose that the team focus on architecture definition, with emphasis on defining the change parameters to support this new business strategy that the CEO has identified
- B. Once understood, the team will be in the best position to identify the requirements, drivers, issues, and constraints for the change

- C. You would ensure that the architecture development addresses non-functional requirements to assure that the target architecture is robust and secure.
- D. You propose that this engagement define the baseline Technology Architecture first in order to assess the current infrastructure capacity and capability for the company.
- E. Then the focus should be on transition planning and incremental architecture deployment. This will identify requirements to ensure that the projects are sequenced in an optimal fashion so as to realize the change.
- F. You propose that the priority is to understand and bring structure to the definition of the change.
- G. The team should focus iteration cycles on a baseline first approach to architecture development, and then transition planning.
- H. This will identify what needs to change in order to transition from the baseline to the target, and can be used to work out in detail what the shared vision is for the change.
- I. You propose that the team focus its iteration cycles on architecture development by going through the architecture definition phases (B-D) with a baseline first approach.
- J. This will support the change in direction as stated by the CEO.
- K. It will ensure that the change can be defined in a structured manner and address the requirements needed to realize the change.

Answer: C

Explanation:

Based on the TOGAF standard, this answer is the best approach for architecture development to realize the CEO's change in direction for the company. The reason is as follows:

? The scenario describes a major business transformation that requires a clear understanding of the current and future states of the enterprise, as well as the gaps and opportunities for change. Therefore, the priority is to understand and bring structure to the definition of the change, rather than focusing on the implementation details or the technology aspects.

? The team should use the TOGAF ADM as the method and guiding framework for architecture development, and adapt it to suit the specific needs and context of the enterprise. The team should also leverage the existing Architecture Capability and the Architecture Repository to reuse and integrate relevant architecture assets and resources.

? The team should focus iteration cycles on a baseline first approach to architecture development, which means starting with the definition of the Baseline Architecture in each domain (Business, Data, Application, and Technology), and then defining the Target Architecture in each domain. This will help to identify the current and desired states of the enterprise, and to perform a gap analysis to determine what needs to change in order to achieve the business goals and objectives.

? The team should then focus on transition planning, which involves identifying and prioritizing the work packages, projects, and activities that will deliver the change. The team should also create an Architecture Roadmap and an Implementation and Migration Plan that will guide the execution and governance of the change.

? The team should use the Architecture Vision phase and the Requirements Management phase to work out in detail what the shared vision is for the change, and to capture and validate the stakeholder requirements and expectations. The team should also use the Architecture Governance framework to ensure the quality, consistency, and compliance of the architecture work.

References: : The TOGAF Standard, Version 9.2 - Architecture Development Method : The TOGAF Standard, Version 9.2 - Architecture Vision : The TOGAF Standard, Version 9.2 - Requirements Management : [The TOGAF Standard, Version 9.2 - Architecture Governance]

NEW QUESTION 120

- (Topic 2)

Please read this scenario prior to answering the question

Your role is consultant to the Lead Architect within a multinational company that manufactures electronic components. The company has several manufacturing divisions located worldwide and a complex supply chain. After a recent study, senior management have stated a concern about business efficiency considering the company's multiple data centers and duplication of applications.

The company has a mature Enterprise Architecture (EA) practice and uses the TOGAF architecture development method in its EA practice. In addition to the EA program, the company has several management frameworks in use, including business planning, project/portfolio management, and operations management. The EA program is sponsored by the CIO.

A strategic architecture has been defined to improve the ability to meet customer demand and improve management of the supply chain. The strategic architecture includes the consolidation of multiple Enterprise Resource Planning (ERP) applications that have been operating independently in the divisions' production facilities.

Each division has completed the Architecture Definition documentation to meet its own specific manufacturing requirements. The enterprise architects have defined a set of work packages that address the gaps identified. They have identified the value produced, effort required, and dependencies between work packages to reach a target architecture that would integrate a new ERP environment into the company.

Because of the risks posed by change from the current environment, the architects have recommended that a phased approach occurs to implement the target architecture with several transition states. The overall implementation process is estimated to take several years.

Refer to the scenario

You have been asked what the next steps are for the migration planning. Based on the TOGAF standard which of the following is the best answer?

- A. You conduct a series of Compliance Assessments to ensure that the architecture is being implemented according to the contract.
- B. The Compliance Assessment should verify that the implementation team is using the proper development methodology.
- C. It should include deployment of monitoring tools and ensure that performance targets are being met.
- D. If they are not met, then you would identify changes to performance requirements and update those in the Implementation and Migration Plan.
- E. You place the Architecture Definition Document under configuration control.
- F. This will ensure that the architecture remains relevant and responsive to the needs of the enterprise.
- G. You would identify the development resources to undertake the project.
- H. You would then produce an Implementation Governance Model to manage the lessons learned prior to finalizing the plan.
- I. You recommend that lessons learned be applied as changes to the architecture without review.
- J. You estimate the business value for each project by applying the Business Value Assessment Technique to prioritize the implementation projects and project increment.
- K. The assessment should focus on return on investment and performance evaluation criteria that can be used to monitor the progress of the architecture transformation.
- L. You would confirm and plan a series of Transition Architecture phases using an Architecture Definition Increments Table that lists the projects.
- M. You assess how the Implementation and Migration plan impacts the other frameworks in use in the organization.
- N. Minimally, you ensure that the plan is coordinated with the business planning, project/portfolio management and operations management framework.
- O. You would then assign a business value to each work package, considering available resources and strategic fit.
- P. You then use the work packages to identify projects that will be in the Implementation and Migration Plan.

Answer: C

Explanation:

The Business Value Assessment Technique is a technique that can be used to estimate and compare the business value of the projects and project increments that implement the architecture work packages, which are the sets of actions or tasks that are required to implement a specific part of the architecture. The business value is the measure of the benefits or advantages that the project or project increment delivers to the business, such as increased revenue, reduced costs, improved quality, or enhanced customer satisfaction¹

The steps for applying the Business Value Assessment Technique are:

? Identify the criteria and factors that are relevant to the business value assessment, such as costs, benefits, risks, and opportunities. The criteria and factors should be aligned with the business goals and drivers that motivate the architecture work, and the stakeholder requirements and concerns that influence the architecture work.

? Assign weights and scores to the criteria and factors, using various methods, such as expert judgment, historical data, or analytical models. The weights and scores should reflect the importance and performance of the criteria and factors, and the trade-offs and preferences of the stakeholders.

? Calculate the business value for each project or project increment, using various techniques, such as net present value, return on investment, or balanced scorecard. The business value should indicate the expected or actual outcomes and impacts of the project or project increment on the business.

? Prioritize the implementation projects and project increments, based on the business value and other considerations, such as dependencies, resources, or risks. The prioritization should determine the order or sequence of the projects and project increments, and the allocation and utilization of the resources.

Therefore, the best answer is C, because it describes the next steps for the migration planning, which are the activities that support the transition from the Baseline Architecture to the Target Architecture. The answer covers the Business Value Assessment Technique, which is relevant to the scenario.

References: 1: The TOGAF Standard, Version 9.2, Part III: ADM Guidelines and Techniques, Chapter 28: Business Value Assessment Technique : The TOGAF Standard, Version 9.2, Part II: Architecture Development Method (ADM), Chapter 18: Phase A: Architecture Vision : The TOGAF Standard, Version 9.2, Part II: Architecture Development Method (ADM), Chapter 21: Phase F: Migration Planning : The TOGAF Standard, Version 9.2, Part IV: Architecture Content Framework, Chapter 36: Building Blocks

NEW QUESTION 123

.....

Relate Links

100% Pass Your OGEA-103 Exam with ExamBible Prep Materials

<https://www.exambible.com/OGEA-103-exam/>

Contact us

We are proud of our high-quality customer service, which serves you around the clock 24/7.

Viste - <https://www.exambible.com/>