

Microsoft

Exam Questions SC-300

Microsoft Identity and Access Administrator



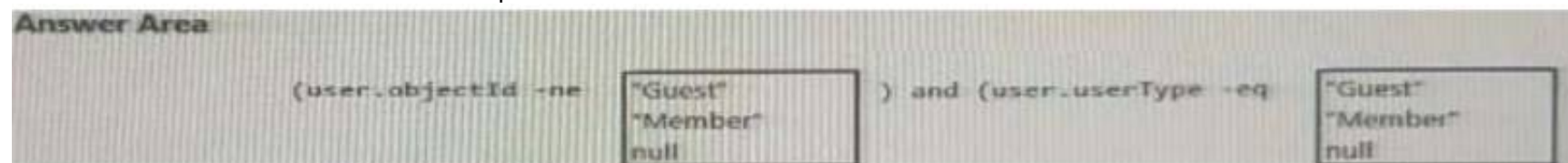
NEW QUESTION 1

- (Exam Topic 1)

You need to create the LWGroup1 group to meet the management requirements.

How should you complete the dynamic membership rule? To answer, drag the appropriate values to the correct targets. Each value may be used once, more than once, or not at all. You may need to drag the split bar between panes or scroll to view content.

NOTE: Each correct selection is worth one point.



- A. Mastered
- B. Not Mastered

Answer: A

Explanation:

Null "Member"

NEW QUESTION 2

- (Exam Topic 1)

You need to implement on-premises application and SharePoint Online restrictions to meet the authentication requirements and the access requirements.

What should you do? To answer, select the appropriate options in the answer area. NOTE: Each correct selection is worth one point.

For on-premises applications:

Configure Cloud App Security policies.

Modify the User consent settings for the enterprise applications.

Publish the applications by using Azure AD Application Proxy.

For SharePoint Online:

Configure Cloud App Security policies.

Modify the User consent settings for the enterprise applications.

Publish an application by using Azure AD Application Proxy.

- A. Mastered
- B. Not Mastered

Answer: A

Explanation:

For on-premises applications:

Configure Cloud App Security policies.

Modify the User consent settings for the enterprise applications.

Publish the applications by using Azure AD Application Proxy.

For SharePoint Online:

Configure Cloud App Security policies.

Modify the User consent settings for the enterprise applications.

Publish an application by using Azure AD Application Proxy.

NEW QUESTION 3

- (Exam Topic 2)

You need to allocate licenses to the new users from A. Datum. The solution must meet the technical requirements.

Which type of object should you create?

- A. a distribution group
- B. a Dynamic User security group
- C. an administrative unit
- D. an OU

Answer: C

NEW QUESTION 4

- (Exam Topic 2)

You need to implement the planned changes and technical requirements for the marketing department. What should you do? To answer, select the appropriate options in the answer area.

NOTE: Each correct selection is worth one point.

To configure user access:

<input type="checkbox"/>	An access package
<input type="checkbox"/>	An access review
<input type="checkbox"/>	A conditional access policy

To enable collaboration with fabrikam.com:

<input type="checkbox"/>	An accepted domain
<input type="checkbox"/>	A connected organization
<input type="checkbox"/>	A custom domain name

- A. Mastered
- B. Not Mastered

Answer: A

Explanation:

Reference:

<https://docs.microsoft.com/en-us/azure/active-directory/governance/entitlement-management-organization>

NEW QUESTION 5

- (Exam Topic 3)

You need to resolve the issue of I-Group1. What should you do first?

- A. Recreate the IT-Group 1 group.
- B. Change Membership type of IT-Group1 to Dynamic Device
- C. Add an owner to IT_Group1.
- D. Change Membership type of IT-Group1 to Dynamic User

Answer: A

NEW QUESTION 6

- (Exam Topic 4)

You have an Azure AD tenant named Contoso that contains a terms of use (ToU) named Terms1 and an access package. Contoso users collaborate with an external organization named Fabrikam. Fabrikam users must accept Terms1 before being allowed to use the access package. You need to identify which users accepted or declined Terms1. What should you use?

- A. provisioning logs
- B. the Usage and Insights report
- C. sign-in logs
- D. audit logs

Answer: D

NEW QUESTION 7

- (Exam Topic 4)

You have a Microsoft 365 tenant.

All users must use the Microsoft Authenticator app for multi-factor authentication (MFA) when accessing Microsoft 365 services.

Some users report that they received an MFA prompt on their Microsoft Authenticator app without initiating a sign-in request.

You need to block the users automatically when they report an MFA request that they did not Initiate. Solution: From the Azure portal, you configure the Block/unblock users settings for multi-factor authentication (MFA).

Does this meet the goal?

- A. Yes
- B. No

Answer: B

Explanation:

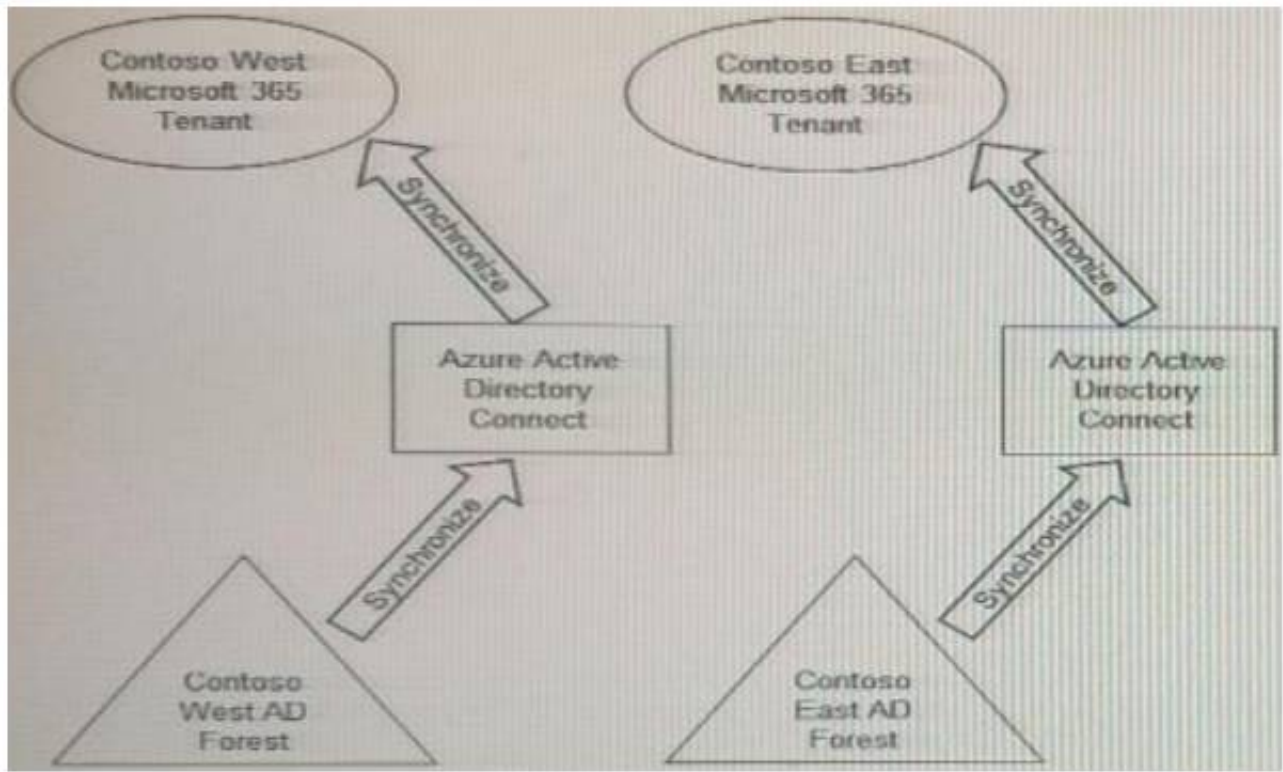
You need to configure the fraud alert settings. Reference:

<https://docs.microsoft.com/en-us/azure/active-directory/authentication/howto-mfa-mfasettings>

NEW QUESTION 8

- (Exam Topic 4)

Your company has two divisions named Contoso East and Contoso West. The Microsoft 365 identity architecture for both divisions is shown in the following exhibit.



You need to assign users from the Contoso East division access to Microsoft SharePoint Online sites in the Contoso West tenant. The solution must not require additional Microsoft 365 licenses. What should you do?

- A. Configure the exiting Azure AD Connect server in Contoso Cast to sync the Contoso East ActiveDirectory forest to the Contoso West tenant.
- B. Configure Azure AD Application Proxy in the Contoso West tenant.
- C. Deploy a second Azure AD Connect server to Contoso East and configure the server to sync the Contoso East Active Directory forest to the Contoso West tenant.
- D. Invite the Contoso East users as guests in the Contoso West tenant.

Answer: D

NEW QUESTION 9

- (Exam Topic 4)
 You have an Azure Active Directory (Azure AD) tenant that syncs to an Active Directory forest. The tenant-uses through authentication. A corporate security policy states the following:

- > Domain controllers must never communicate directly to the internet.
- > Only required software must be- installed on servers.

The Active Directory domain contains the on-premises servers shown in the following table.

Name	Description
Server1	Domain controller (PDC emulator)
Server2	Domain controller (infrastructure master)
Server3	Azure AD Connect server
Server4	Unassigned member server

You need to ensure that users can authenticate to Azure AD if a server fails. On which server should you install an additional pass-through authentication agent?

- A. Server2
- B. Server4
- C. Server1
- D. Server3

Answer: C

Explanation:

Reference:
<https://docs.microsoft.com/en-us/azure/active-directory/hybrid/how-to-connect-pta-quick-start>

NEW QUESTION 10

- (Exam Topic 4)
 Note: This question is part of a series of questions that present the same scenario. Each question in the series contains a unique solution that might meet the stated goals. Some question sets might have more than one correct solution, while others might not have a correct solution. After you answer a question in this section, you will NOT be able to return to it. As a result, these questions will not appear in the review screen. You have an Active Directory forest that syncs to an Azure Active Directory (Azure AD) tenant. You discover that when a user account is disabled in Active Directory, the disabled user can still authenticate to Azure AD for up to 30 minutes. You need to ensure that when a user account is disabled in Active Directory, the user account is immediately prevented from authenticating to Azure AD. Solution: You configure Azure AD Password Protection. Does this meet the goal?

- A. Yes
- B. No

Answer: B

NEW QUESTION 10

- (Exam Topic 4)
 You have a Microsoft 365 E5 subscription.
 You purchase the app governance add-on license. You need to enable app governance integration. Which portal should you use?

A. the Microsoft Defender for Cloud Apps portal
 B. the Microsoft 365 admin center
 C. Microsoft 365 Defender
 D. the Azure Active Directory admin center
 E. the Microsoft Purview compliance portal

Answer: A

NEW QUESTION 14

- (Exam Topic 4)
 You have an Azure Active Directory (Azure AD) tenant.
 You create an enterprise application collection named HR Apps that has the following settings:

- Applications: Appl. App?, App3
- Owners: Admin 1
- Users and groups: HRUsers

AH three apps have the following Properties settings:

- Enabled for users to sign in: Yes
- User assignment required: Yes
- Visible to users: Yes

Users report that when they go to the My Apps portal, they only see App1 and App2-You need to ensure that the users can also see App3. What should you do from App3?
 What should you do from App3?

- A. From Users and groups, add HRUsers.
- B. Prom Properties, change User assignment required to No.
- C. From Permissions, review the User consent permissions.
- D. From Single sign on, configure a sign-on method.

Answer: A

Explanation:

Reference:
<https://docs.microsoft.com/en-us/azure/active-directory/manage-apps/assign-user-or-group-access-portal> <https://docs.microsoft.com/en-us/azure/active-directory/user-help/my-applications-portal-workspaces>

NEW QUESTION 19

- (Exam Topic 4)
 You have an Azure AD tenant.
 You perform the tasks shown in the following table.

Date	Task
March 1	Register four enterprise applications named App1, App2, App3, and App4.
March 15	From the tenant, update the following settings for App1: App roles, Users and groups, Client secret, and Self-service.
March 20	From the tenant, update the following settings for App2: App roles, Users and groups, Client secret, and Self-service.
March 25	From the tenant, update the following settings for App3: App roles, Users and groups, Client secret, and Self-service.
March 30	From the tenant, update the following settings for App4: App roles, Users and groups, Client secret, and Self-service.

On April 5, an administrator deletes App1, App2, App3, and App4.
 You need to restore the apps and the settings.
 Which apps can you restore on April 16, and which settings can you restore for App4 on April 16? To answer, select the appropriate options in the answer area.
 NOTE: Each correct selection is worth one point.

Answer Area

Apps:

App3 and App4 only
 No apps
 App4 only
 App3 and App4 only
 App2, App3, and App4 only
 App1, App2, App3, and App4

App4 settings:

App roles, Users and groups, Client secret, and Self-service
 No settings
 Self-service only
 App roles and Client secret only
 Users and groups and Self-service only
 App roles, Users and groups, Client secret, and Self-service

- A. Mastered
B. Not Mastered

Answer: A

Explanation:

A screenshot of a phone Description automatically generated

NEW QUESTION 24

- (Exam Topic 4)

You have a Microsoft 365 ES subscription that user Microsoft Defender for Cloud Apps and Yammer. You need prevent users from signing in to Yammer from high-risk locations.

What should you do in the Microsoft Defender for Cloud Apps portal?

- A. Create an access Policy.
B. Create an activity policy.
C. Unsanction Yammer.
D. Create an anomaly detection policy.

Answer: A

NEW QUESTION 28

- (Exam Topic 4)

You have an Azure subscription that contains the resources shown in the following table. You need to configure access to Vault1. The solution must meet the following requirements:

- Ensure that User1 can manage and create keys in Vault1.
- Ensure that User2 can access a certificate stored in Vault1.
- Use the principle of least privilege.

Which role should you assign to each user? To answer select the appropriate options in the answer area. NOTE: Each correct selection is worth one point.

Answer Area



User1: Key Vault Certificates Officer
Key Vault Certificates Officer
Key Vault Crypto Officer
Key Vault Secrets Officer

User2: Key Vault Certificates Officer
Key Vault Certificates Officer
Key Vault Crypto Officer
Key Vault Secrets Officer

- A. Mastered
B. Not Mastered

Answer: A

Explanation:

A screenshot of a computer Description automatically generated

NEW QUESTION 33

- (Exam Topic 4)

You have an Azure Active Directory (Azure Azure) tenant that contains the objects shown in the following table.

- A device named Device1
- Users named User1, User2, User3, User4, and User5
- Five groups named Group1, Group2, Group3, Group4, and Group5 The groups are configured as shown in the following table.

Name	Type	Membership type	Members
Group1	Security	Assigned	User1, User3, Group2, Group4
Group2	Security	Dynamic User	User2
Group3	Security	Dynamic Device	Device1
Group4	Microsoft 365	Assigned	Group5
Group5	Microsoft 365	Assigned	User5

How many licenses are used if you assign the Microsoft Office 365 Enterprise E5 license to Group1?

- A. 2
B. 3
C. 4

Answer: B

Explanation:

Reference:

<https://docs.microsoft.com/en-us/azure/active-directory/enterprise-users/licensing-group-advanced>

NEW QUESTION 34

- (Exam Topic 4)

You have an Azure AD tenant and a .NET web app named App1. You need to register App1 for Azure AD authentication. What should you configure for App1?

- A. the executable name
- B. the bundle ID
- C. the package name
- D. the redirect URI

Answer: D

NEW QUESTION 37

- (Exam Topic 4)

Your company has a Microsoft 365 tenant.

The company has a call center that contains 300 users. In the call center, the users share desktop computers and might use a different computer every day. The call center computers are NOT configured for biometric identification.

The users are prohibited from having a mobile phone in the call center.

You need to require multi-factor authentication (MFA) for the call center users when they access Microsoft 365 services.

What should you include in the solution?

- A. a named network location
- B. the Microsoft Authenticator app
- C. Windows Hello for Business authentication
- D. FIDO2 tokens

Answer: D

Explanation:

<https://docs.microsoft.com/en-us/azure/active-directory/authentication/concept-authentication-passwordless>

NEW QUESTION 41

- (Exam Topic 4)

Your network contains an on-premises Active Directory domain that syncs to an Azure Active Directory (Azure AD) tenant.

The tenant contains the groups shown in the following table.

Name	Source	Member of
Group1	Cloud	Group3
Group2	Active Directory domain	None
Group3	Cloud	None

The tenant contains the users shown in the following table.

Name	Directory-synced	Member of
User1	No	Group1
User2	No	Group3
User3	Yes	Group2

You create an access review as shown in the following table.

Setting	Value
Review type	Teams + Groups
Review scope	All users
Group	Group2, Group3
Reviewers	Users review own access
If reviewers don't respond	Remove access

For each of the following statements, select Yes if the statement is true. Otherwise, select No. NOTE: Each correct selection is worth one point.

Answer Area		
Statements	Yes	No
User1 will be removed automatically from Group1 if the user does not respond to the review request.	<input type="radio"/>	<input type="radio"/>
User2 will be removed automatically from Group3 if the user does not respond to the review request.	<input type="radio"/>	<input type="radio"/>
User3 will be removed automatically from Group2 if the user does not respond to the review request.	<input type="radio"/>	<input type="radio"/>

- A. Mastered
- B. Not Mastered

Answer: A

Explanation:

Answer Area

Statements

User1 will be removed automatically from Group1 if the user does not respond to the review request.

User2 will be removed automatically from Group3 if the user does not respond to the review request.

User3 will be removed automatically from Group2 if the user does not respond to the review request.

Yes

☐☒☐

No

☒☐☒

NEW QUESTION 44

- (Exam Topic 4)

You have an Azure subscription that uses Azure AD Privileged Identity Management (PIM). You need to identify users that are eligible for the Cloud Application Administrator role. Which blade in the Privileged Identity Management settings should you use?

- A. Azure resources
- B. Privileged access groups
- C. Review access
- D. Azure AD roles

Answer: D

NEW QUESTION 45

- (Exam Topic 4)

You have a Microsoft 365 E5 subscription that contains a Microsoft SharePoint Online site named Site1. Site1 hosts PDF files

You need to prevent users from printing the files directly from Site1.

Which type of policy should you create in the Microsoft Defender for Cloud Apps portal?

- A. activity policy
- B. file policy
- C. access policy
- D. session policy

Answer: D

NEW QUESTION 48

- (Exam Topic 4)

You have an Azure AD tenant that uses Azure AD Identity Protection and contains the resources shown in the following table.

Name	Type	Configuration
Risk1	User risk policy	Users that have a high severity risk must reset their password upon next sign-in.
User1	User	Not applicable

Azure Multi-Factor Authentication (MFA) is enabled for all users.

User1 triggers a medium severity alert that requires additional investigation.

You need to force User1 to reset his password the next time he signs in. the solution must minimize administrative effort.

What should you do?

- A. Configure a sign-in risk policy.
- B. Mark User1 as compromised.
- C. Reconfigure the user risk policy to trigger on medium or low severity.
- D. Reset the Azure MFA registration for User1.

Answer: B

NEW QUESTION 50

- (Exam Topic 4)

You have an Azure AD tenant that has multi-factor authentication (MFA) enforced and self-service password reset (SSPR) enabled.

You enable combined registration in interrupt mode. You create a new user named User1.

Which two authentication methods can User1 use to complete the combined registration process? Each correct answer presents a complete solution.

NOTE: Each correct selection is worth one point.

- A. a FIDO2 security key
- B. a hardware token
- C. a one-time passcode email
- D. Windows Hello for Business
- E. the Microsoft Authenticator app

Answer: AE

NEW QUESTION 52

- (Exam Topic 4)

You have a Microsoft 365 E5 subscription that contains a Microsoft SharePoint Online site named Site1 and the users shown in the following table.

The users have the devices shown in the following table. You create the following two Conditional Access policies:

- Name: CAPolicy1

- Assignments
 - o Users or workload identities: Group 1
 - o Cloud apps or actions: Office 365 SharePoint Online o Conditions
- Filter for devices: Exclude filtered devices from the policy Rule syntax: device.displayName -starts With "Device*"
- o Access controls Grant: Block access
- Session: 0 controls selected o Enable policy: On
- Name: CAPolicy2
 - Assignments
 - o Users or workload identities: Group2
 - o Cloud apps or actions: Office 365 SharePoint Online o Conditions: 0 conditions selected
 - Access controls
 - o Grant: Grant access
- Require multifactor authentication o Session: 0 controls selected
- Enable policy: On

All users confirm that they can successfully authenticate using MFA.
For each of the following statements, select Yes if the statement is true. Otherwise, select No. NOTE: Each correct selection is worth one point.

Answer Area		
Statements	Yes	No
User1 can access Site1 from Device1.	<input type="radio"/>	<input type="radio"/>
User2 can access Site1 from Device2.	<input type="radio"/>	<input type="radio"/>
User3 can access Site1 from Device3.	<input type="radio"/>	<input type="radio"/>

- A. Mastered
- B. Not Mastered

Answer: A

Explanation:
A screenshot of a computer Description automatically generated

NEW QUESTION 57

- (Exam Topic 4)
You have a Microsoft 365 tenant.
All users have mobile phones and laptops.
The users frequently work from remote locations that do not have Wi-Fi access or mobile phone connectivity. While working from the remote locations, the users connect their laptop to a wired network that has internet access.
You plan to implement multi-factor authentication (MFA).
Which MFA authentication method can the users use from the remote location?

- A. a notification through the Microsoft Authenticator app
- B. security questions
- C. voice
- D. an app password

Answer: A

Explanation:
Reference:
<https://docs.microsoft.com/en-us/azure/active-directory/authentication/concept-authentication-authenticator-app>

NEW QUESTION 61

- (Exam Topic 4)
You have an Azure AD tenant that contains a user named User1 and a registered app named App1. User1 deletes the app registration of Appl.
You need to restore the app registration.
What is the maximum number of days you have to restore the app registration from when it was deleted?

- A. 14
- B. 30
- C. 60
- D. 180

Answer: B

NEW QUESTION 64

- (Exam Topic 4)
You have an Azure Active Directory (Azure AD) tenant that contains three users named User1, User1, and User3,
You create a group named Group1. You add User2 and User3 to Group1.
You configure a role in Azure AD Privileged identity Management (PIM) as shown in the application administrator exhibit. (Click the application Administrator tab.)

Role setting details - Application Administrator

Privileged Identity Management | Azure AD roles

Edit

Activation

Setting	State
Activation maximum duration (hours)	5 hour(s)
Require justification on activation	Yes
Require ticket information on activation	No
Require approval to activate	Yes
Approvers	0 Member(s), 1 Group(s)

Assignment

Setting	State
Allow permanent eligible assignment	No
Expire eligible assignments after	3 month(s)
Allow permanent active assignment	No
Expire active assignments after	1 month(s)
Require Azure Multi-Factor Authentication on activation	No
Require justification on active assignment	Yes

Group1 is configured as the approver for the application administrator role. You configure User2to be eligible for the application administrator role. For User1, you add an assignment to the Application administrator role as shown in the Assignment exhibit. (Click Assignment tab)

Add assignments

Privileged Identity Management | Azure AD roles

Membership

Setting

Assignment type ⓘ

Eligible

Active

Maximum allowed eligible duration is 3 month(s).

Assignment starts *

01/01/2021

12:00:00 AM

Assignment ends *

01/31/2021

11:59:00 PM

For each of the following statement, select Yes if the statement is true, Otherwise, select No. NOTE: Each correct selection is worth one point.

Answer Area

Statements	Yes	No
User1 is assigned the Application administrator role automatically.	<input type="radio"/>	<input type="radio"/>
When User2 requests to be assigned the Application administrator role, only User3 can approve the request.	<input type="radio"/>	<input type="radio"/>
If a request by User1 to be assigned the Application administrator role is approved on January 31, 2021, at 23:00, User1 can use the role until February 1, 2021, at 04:00.	<input type="radio"/>	<input type="radio"/>

- A. Mastered
- B. Not Mastered

Answer: A

Explanation:

Answer Area

Statements	Yes	No
User1 is assigned the Application administrator role automatically.	<input checked="" type="radio"/>	<input type="radio"/>
When User2 requests to be assigned the Application administrator role, only User3 can approve the request.	<input checked="" type="radio"/>	<input type="radio"/>
If a request by User1 to be assigned the Application administrator role is approved on January 31, 2021, at 23:00, User1 can use the role until February 1, 2021, at 04:00.	<input type="radio"/>	<input checked="" type="radio"/>

You have a Microsoft 365 E5 tenant. You purchase a cloud app named App1.
You need to enable real-time session-level monitoring of App1 by using Microsoft Cloud app Security.
Which four actions should you perform in sequence? To answer, move the appropriate actions from the list of actions to the answer area and arrange them in the correct order.

Actions

From Microsoft Cloud App Security, create a session policy.

Publish App1 in Azure Active Directory (Azure AD).

Create a conditional access policy that has session controls configured.

From Microsoft Cloud App Security, modify the Connected apps settings for App1.

Answer Area

⬅

➡

⬆

⬇

- A. Mastered
- B. Not Mastered

Answer: A

Explanation:
A picture containing application Description automatically generated
Reference:
<https://docs.microsoft.com/en-us/cloud-app-security/proxy-deployment-any-app> <https://docs.microsoft.com/en-us/cloud-app-security/session-policy-aad>

NEW QUESTION 72

- (Exam Topic 4)
You have a Microsoft 365 subscription that contains the following:

- An Azure Active Directory (Azure AD) tenant that has an Azure Active Directory Premium P2 license
- A Microsoft SharePoint Online site named Site1
- A Microsoft Teams team named Team1

You need to create an entitlement management workflow to manage Site1 and Team1. What should you do first?

- A. Create an access package.
- B. Create a catalog.
- C. Create an administrative unit.
- D. Configure an app registration.

Answer: A

NEW QUESTION 75

- (Exam Topic 4)
You have a Microsoft 365 tenant.
You need to ensure that you can view Azure Active Directory (Azure AD) audit log information by using Azure Monitor.
What should you do first?

- A. Run the Get-AzureADAuditDirectoryLogs cmdlet.
- B. Create an Azure AD workbook.
- C. Run the Set-AzureADTenantDetail cmdlet.
- D. Modify the Diagnostics settings for Azure AD.

Answer: D

NEW QUESTION 76

- (Exam Topic 4)
Your company has an Azure Active Directory (Azure AD) tenant named contosri.com. The company has the business partners shown in the following table.

Name	Description
Fabrikam, Inc.	An Azure AD tenant that has two verified domains named fabrikam.com and adatum.com
Litware, Inc.	A third-party identity provider that uses the domain names of litwareinc.com and contoso.com

users can request access by using package 1.
Users at Fabrikam and Litware use their respective domain names for email addresses.
You plan to create an access package named package1 that will be accessible only to the Fabrikam and Litware users.
You need to configure connected organizations for Fabrikam and Litware so that any of their users can request access by using package1.
What is the minimum number of connected organizations that you should create.

- A. 1

- B. 2
- C. 3
- D. 4

Answer: C

NEW QUESTION 79

- (Exam Topic 4)

You plan to deploy a new Azure AD tenant.

Which multifactor authentication (MFA) method will be enabled by default for the tenant?

- A. Microsoft Authenticator
- B. SMS
- C. voice call
- D. email OTP

Answer: B

NEW QUESTION 80

- (Exam Topic 4)

You have a Microsoft 365 E5 subscription that contains a web app named App1. Guest users are regularly granted access to App1.

You need to ensure that the guest users that have NOT accessed App1 during the past 30 days have their access removed the solution must minimize administrative effort.

What should you configure?

- A. a compliance policy
- B. an access review for application access
- C. a guest access review
- D. a Conditional Access policy

Answer: C

NEW QUESTION 83

- (Exam Topic 4)

Your company has an Azure AD tenant that contains the users shown in the following table.

Name	Role
User1	Application administrator
User2	None
User3	Exchange administrator
User4	Cloud application administrator

You have the app registrations shown in the following table.

App name	Used by	Microsoft Graph permission
App1	User1	Calendars.Read of type Delegated
App2	User2	Calendars.Read of type Delegated Calendars.ReadWrite of type Application
App3	User3, User4	Calendars.Read of type Application

A company policy prevents changes to user permissions.

Which user can create appointments in the calendar of each user at the company?

- A. User1
- B. User2
- C. User3
- D. User4

Answer: B

NEW QUESTION 84

- (Exam Topic 4)

You have an on-premises datacenter that contains the hosts shown in the following table.

Name	Description
Server1	Domain controller that runs Windows Server 2019
Server2	Server that runs Windows Server 2019 and has Azure AD Connect deployed
Server3	Server that runs Windows Server 2019 and has a Microsoft ASP.NET application named App1 installed
Server4	Unassigned server that runs Windows Server 2019
Firewall1	Hardware firewall connected to the internet that blocks all traffic unless explicitly allowed

You have an Azure Active Directory (Azure AD) tenant that syncs to the Active Directory forest. Multi-factor authentication (MFA) is enforced for Azure AD. You need to ensure that you can publish App1 to Azure AD users. What should you configure on Server and Firewall1? To answer, select the appropriate options in the answer area. NOTE: Each correct selection is worth one point.

Service to install on Server4:

Azure AD Application Proxy

The Azure AD Password Protection DC agent

The Azure AD Password Protection proxy service

Web Application Proxy in Windows Server

Rule to configure on Firewall1:

Allow incoming HTTPS connections from Azure AD to Server4.

Allow incoming IPsec connections from Azure AD to Server4.

Allow outbound HTTPS connections from Server4 to Azure AD.

Allow outbound IPsec connections from Server4 to Azure AD.

- A. Mastered
- B. Not Mastered

Answer: A

Explanation:
Reference:
<https://docs.microsoft.com/en-us/azure/active-directory/manage-apps/application-proxy>

NEW QUESTION 85

- (Exam Topic 4)
You have a Microsoft 365 tenant.
You create a named location named HighRiskCountries that contains a list of high-risk countries.
You need to limit the amount of time a user can stay authenticated when connecting from a high-risk country. What should you configure in a conditional access policy? To answer, select the appropriate options in the answer area.
NOTE: Each correct selection is worth one point.

Answer Area

Configure HighRiskCountries by using:

A cloud app or action

A condition

A grant control

A session control

Configure Sign-in frequency by using:

A cloud app or action

A condition

A grant control

A session control

- A. Mastered
- B. Not Mastered

Answer: A

Explanation:
Graphical user interface, text, application Description automatically generated
Reference:
<https://docs.microsoft.com/en-us/azure/active-directory/conditional-access/location-condition> <https://docs.microsoft.com/en-us/azure/active-directory/conditional-access/concept-conditional-access-session>

NEW QUESTION 87

- (Exam Topic 4)
Your network contains an on-premises Active Directory domain that sync to an Azure Active Directory (Azure AD) tenant. The tenant contains the shown in the following table.

Name	Type	Directory synced
User1	User	No
User2	User	Yes
User3	Guest	No

All the users work remotely.
Azure AD Connect is configured in Azure as shown in the following exhibit.

PROVISION FROM ACTIVE DIRECTORY



This feature allows you to manage provisioning from the cloud.

[Manage provisioning \(Preview\)](#)

Azure AD Connect sync

Sync Status	Enabled
Last Sync	Less than 1 hour ago
Password Hash Sync	Enabled

USER SIGN IN



Federation	Disabled	0 domains
Seamless single sign-on	Disabled	0 domains
Pass-through authentication	Enabled	2 agents

Connectivity from the on-premises domain to the internet is lost. Which user can sign in to Azure AD?

- A. User1 only
- B. User1 and User 3 only
- C. User1, and User2 only
- D. User1, User2, and User3

Answer: B

NEW QUESTION 90

- (Exam Topic 4)
You have an Azure Active Directory (Azure AD) tenant named contoso.com.
You plan to bulk invite Azure AD business-to-business (B2B) collaboration users.
Which two parameters must you include when you create the bulk invite? Each correct answer presents part of the solution
NOTE: Each correct selection is worth one point.

- A. email address
- B. redirection URL
- C. username
- D. shared key
- E. password

Answer: AB

Explanation:
Reference:
<https://docs.microsoft.com/en-us/azure/active-directory/external-identities/tutorial-bulk-invite>

NEW QUESTION 91

- (Exam Topic 4)
HOTSPOT
You have an Azure Active Directory (Azure AD) tenant that contains Azure AD Privileged Identity Management (PIM) role settings for the User administrator role as shown in the following exhibit.

... ContosoAzureAD > Identity Governance > Privileged Identity Management > ContosoAzureAD > User Administrator >

Role setting details - User Administrator

Privileged Identity Management | Azure AD roles

 Edit

Activation

SETTING	STATE
Activation maximum duration (hours)	8 hour(s)
Require justification on activation	Yes
Require ticket information on activation	No
On activation, require Azure MFA	Yes
Require approval to activate	Yes
Approvers	None

Assignment

SETTING	STATE
Allow permanent eligible assignment	No
Expire eligible assignments after	15 day(s)
Allow permanent active assignment	No
Expire active assignments after	1 month(s)
Require Azure Multi-Factor Authentication on active assignment	No
Require justification on active assignment	No

Use the drop-down menus to select the answer choice that completes each statement based on the information presented in the graphic.
NOTE: Each correct selection is worth one point.

A user who requires access to the User administration role must perform multi-factor authentication (MFA) every [answer choice].

8 hours

15 days

1 month

Before an eligible user can perform a task that requires the User administrator role, the activation must be approved by a [answer choice].

global administrator only

global administrator or privileged role administrator

permanently assigned user administrator

privileged role administrator only

- A. Mastered
B. Not Mastered

Answer: A

Explanation:

Reference:

<https://docs.microsoft.com/en-us/azure/active-directory/privileged-identity-management/pim-configure>

<https://docs.microsoft.com/en-us/azure/active-directory/privileged-identity-management/pim-deployment-plan>

NEW QUESTION 95

- (Exam Topic 4)

You have a Microsoft 365 tenant.

The Azure Active Directory (Azure AD) tenant syncs to an on-premises Active Directory domain.

Users connect to the internet by using a hardware firewall at your company. The users authenticate to the firewall by using their Active Directory credentials.

You plan to manage access to external applications by using Azure AD.
 You need to use the firewall logs to create a list of unmanaged external applications and the users who access them.
 What should you use to gather the information?

- A. Application Insights in Azure Monitor
- B. access reviews in Azure AD
- C. Cloud App Discovery in Microsoft Cloud App Security
- D. enterprise applications in Azure AD

Answer: C

Explanation:

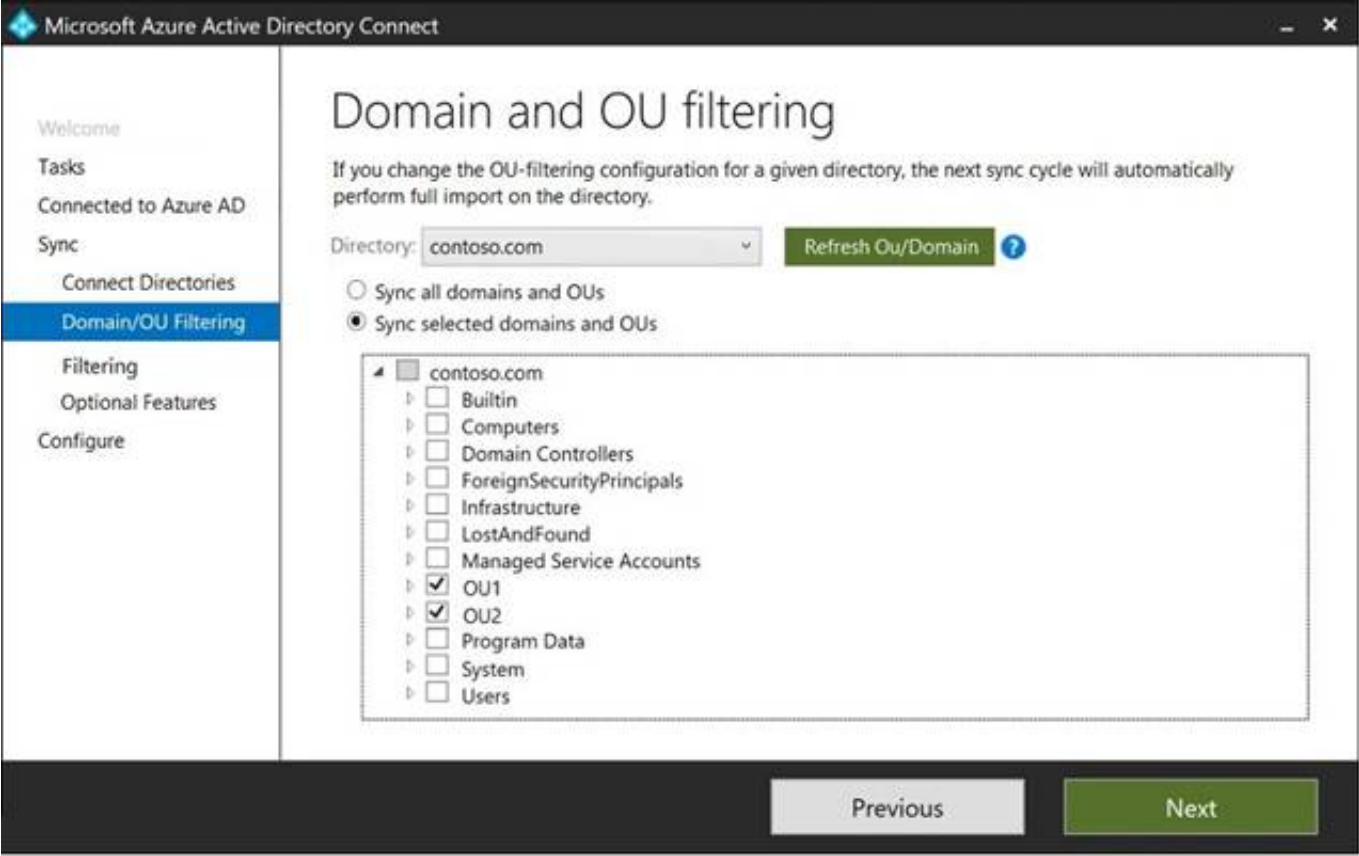
Reference:
<https://docs.microsoft.com/en-us/cloud-app-security/create-snapshot-cloud-discovery-reports#using-traffic-logs>

NEW QUESTION 98

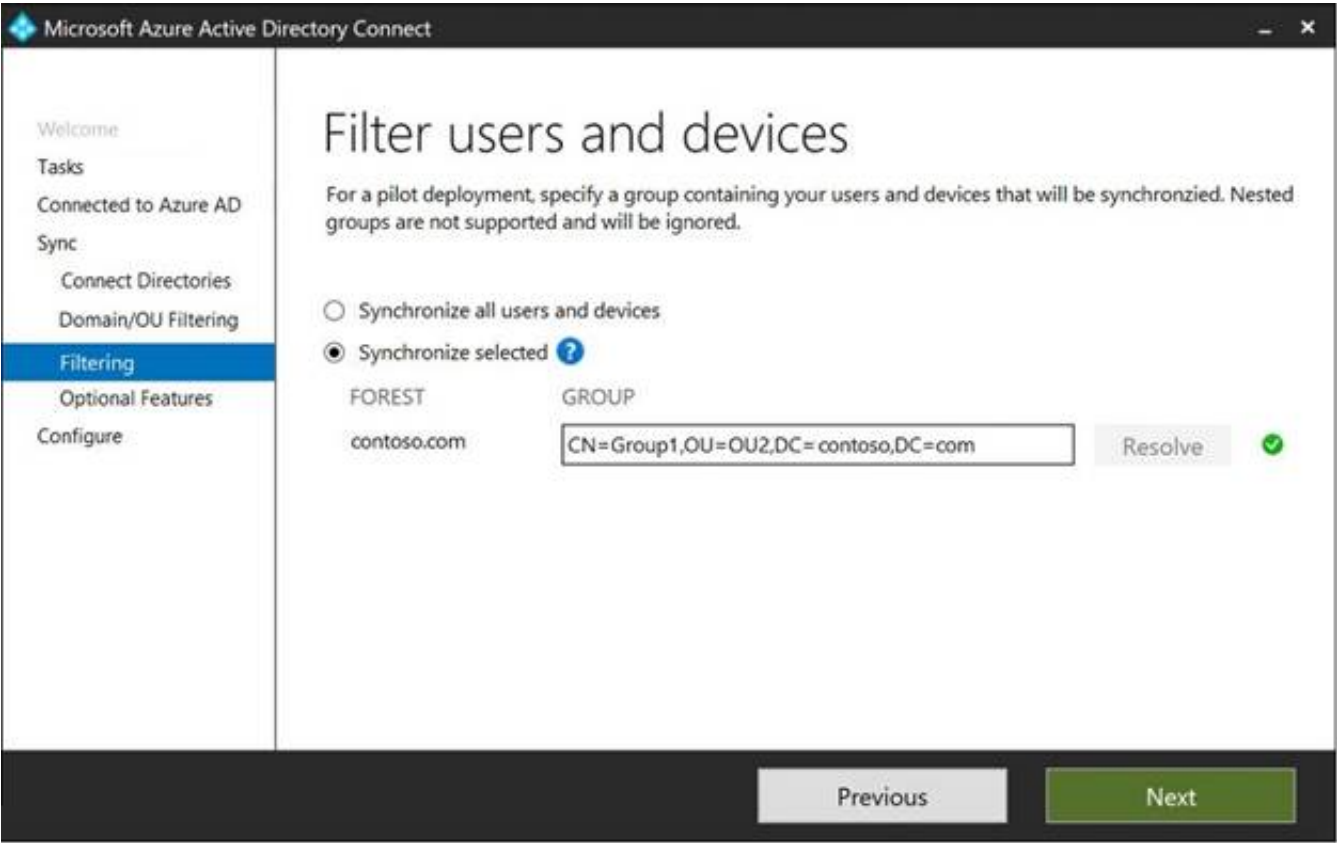
- (Exam Topic 4)
 Your network contains an on-premises Active Directory domain named contoso.com. The domain contains the objects shown in the following table.

Name	Type	In organizational unit (OU)	Description
User1	User	OU1	User1 is a member of Group1.
User2	User	OU1	User2 is not a member of any groups.
Group1	Security group	OU2	User1 and Group2 are members of Group1.
Group2	Security group	OU1	Group2 is a member of Group1.

You install Azure AD Connect. You configure the Domain and OU filtering settings as shown in the Domain and OU Filtering exhibit. (Click the Domain and OU Filtering tab.)



You configure the Filter users and devices settings as shown in the Filter Users and Devices exhibit. (Click the Filter Users and Devices tab.)



For each of the following statements, select Yes if the statement is true. Otherwise, select No.

Statements	Yes	No
User1 syncs to Azure AD.	<input type="radio"/>	<input type="radio"/>
User2 syncs to Azure AD.	<input type="radio"/>	<input type="radio"/>
Group2 syncs to Azure AD.	<input type="radio"/>	<input type="radio"/>

- A. Mastered
- B. Not Mastered

Answer: A

Explanation:

Graphical user interface, application Description automatically generated
Only direct members of Group1 are synced. Group2 will sync as it is a direct member of Group1 but the members of Group2 will not sync.
Reference:
<https://docs.microsoft.com/en-us/azure/active-directory/hybrid/how-to-connect-install-custom>

NEW QUESTION 103

- (Exam Topic 4)
You have a Microsoft 365 E5 subscription that contains a Microsoft SharePoint Online site named Site1. You need to be notified if a user downloads more than 50 files in one minute from Site1.
Which type of policy should you create in the Microsoft Defender for Cloud Apps portal?

- A. session policy
- B. anomaly detection policy
- C. activity policy
- D. file policy

Answer: C

NEW QUESTION 108

- (Exam Topic 4)
You have a Microsoft 365 tenant and an Active Directory domain named adatum.com. You deploy Azure AD Connect by using the Express Settings. You need to configure self-service password reset (SSPR) to meet the following requirements:
➤ When users reset their password, they must be prompted to respond to a mobile app notification or answer three predefined security questions.
➤ Passwords must be synced between the tenant and the domain regardless of where the password was reset.
What should you do? To answer, select the appropriate options in the answer area.
NOTE: Each correct selection is worth one point.

From the Password reset blade in the Azure Active Directory admin center, configure:

Authentication methods
Notifications
Properties
Registration

From Azure AD Connect, enable:

Federation with Active Directory Federation Services (AD FS)
Pass-through authentication
Password hash synchronization
Password writeback

- A. Mastered
- B. Not Mastered

Answer: A

Explanation:

Graphical user interface, text, application Description automatically generated

Reference:

<https://docs.microsoft.com/en-us/azure/active-directory/authentication/howto-sspr-deployment> <https://docs.microsoft.com/en-us/azure/active-directory/authentication/concept-authentication-security-questions>

NEW QUESTION 113

- (Exam Topic 4)

You have an Azure Active Directory (Azure AD) tenant that contains the groups shown in the following table.

Name	Type	Membership type
Group1	Security	Assigned
Group2	Security	Dynamic User
Group3	Security	Dynamic Device
Group4	Microsoft 365	Assigned
Group5	Microsoft 365	Dynamic User

For which groups can you create an access review?

- A. Group1 only
- B. Group1 and Group4 only
- C. Group1 and Group2 only
- D. Group1, Group2, Group4, and Group5 only
- E. Group1, Group2, Group3, Group4 and Group5

Answer: D

Explanation:

You cannot create access reviews for device groups. Reference:

<https://docs.microsoft.com/en-us/azure/active-directory/governance/create-access-review>

NEW QUESTION 114

- (Exam Topic 4)

Note: This question is part of a series of questions that present the same scenario. Each question in the series contains a unique solution that might meet the stated goals. Some question sets might have more than one correct solution, while others might not have a correct solution.

After you answer a question in this section, you will NOT be able to return to it. as a result, these questions will not appear in the review screen.

You have an Amazon Web Services (AWS) account a Google Workspace subscription, and a GitHub account You deploy an Azure subscription and enable Microsoft 365 Defender.

You need to ensure that you can monitor OAuth authentication requests by using Microsoft Defender for Cloud Apps.

Solution: From the Microsoft 365 Defender portal, you add the GitHub app connector Does this meet the goal?

- A. Yes
- B. No

Answer: B

NEW QUESTION 119

- (Exam Topic 4)

You have an on-premises Microsoft Exchange organization that uses an SMTP address space of contoso.com. You discover that users use their email address for self-service sign-up to Microsoft 365 services.

You need to gain global administrator privileges to the Azure Active Directory (Azure AD) tenant that contains the self-signed users.

Which four actions should you perform in sequence? To answer, move the appropriate actions from the list of actions to the answer area and arrange them in the correct order.

Actions

Sign in to the Microsoft 365 admin center.

Create a self-signed user account in the Azure AD tenant.

From the Microsoft 365 admin center, add the domain name.

Respond to the Become the admin message.

From the Microsoft 365 admin center, remove the domain name.

Create a TXT record in the contoso.com DNS zone.

Answer Area

⏮

⏭

⏪

⏩

- A. Mastered
- B. Not Mastered

Answer: A

Explanation:

Reference:
<https://docs.microsoft.com/en-us/azure/active-directory/enterprise-users/domains-admin-takeover>

NEW QUESTION 121

- (Exam Topic 4)
 You have an Azure AD tenant that contains the groups shown in the following table.

Name	Owner	Number of internal users	Number of guest users
Group1	User1	500	25
Group2	User2	295	100

You create an access review for Group1 as shown in the following table.

Setting	Value
Review type	Teams + Groups
Review scope	All users
Reviewers	Users review own access

You create an access review for Group2 as shown in the following table.

Setting	Value
Review type	Teams + Groups
Review scope	Guest users only
Reviewers	Group owner

What is the minimum number of Azure AD Premium P2 licenses required for each group? To answer, select the appropriate options in the answer area. NOTE: Each correct selection is worth one point.

Group1:

1

500

525

Group2:

1

100

295

395

- A. Mastered
- B. Not Mastered

Answer: A

Explanation:

Group1:

1

500

525

Group2:

1

100

295

395

NEW QUESTION 122

.....

Thank You for Trying Our Product

We offer two products:

1st - We have Practice Tests Software with Actual Exam Questions

2nd - Questions and Answers in PDF Format

SC-300 Practice Exam Features:

- * SC-300 Questions and Answers Updated Frequently
- * SC-300 Practice Questions Verified by Expert Senior Certified Staff
- * SC-300 Most Realistic Questions that Guarantee you a Pass on Your FirstTry
- * SC-300 Practice Test Questions in Multiple Choice Formats and Updatesfor 1 Year

100% Actual & Verified — Instant Download, Please Click
[Order The SC-300 Practice Test Here](#)