

Microsoft

Exam Questions PL-600

Microsoft Power Platform Solution Architect



NEW QUESTION 1

HOTSPOT - (Topic 1)

You need to ensure that the solution meets the data security and compliance requirements.
What should you recommend? To answer, select the appropriate options in the answer area.
NOTE: Each correct selection is worth one point.

Scenario	Relationship behavior
A worker transfers to a new client company.	<div><div></div><div>Assign: Cascade All</div><div>Assign: Cascade None</div><div>Merge: Cascade All</div><div>Rollup View: Cascade All</div></div>
A user deletes a worker's job placement history.	<div><div></div><div>Delete: Cascade All</div><div>Delete: Remove Link</div><div>Delete: Restrict</div></div>

Answer:

Scenario	Relationship behavior
A worker transfers to a new client company.	<div><div></div><div>Assign: Cascade All</div><div>Assign: Cascade None</div><div>Merge: Cascade All</div><div>Rollup View: Cascade All</div></div>
A user deletes a worker's job placement history.	<div><div></div><div>Delete: Cascade All</div><div>Delete: Remove Link</div><div>Delete: Restrict</div></div>

- A. Mastered
- B. Not Mastered

Answer: A

Explanation:

Box 1: Assign: Cascade None
Scenario: Worker still records must be archived after ten years and are then removed from the main system.
Assign: The referenced table record owner is changed. Cascade None: Do nothing.

NEW QUESTION 2

- (Topic 1)
You need to investigate the canvas app functionality issues.
Which two tools can you use? Each correct answer presents a complete solution.
NOTE: Each correct selection is worth one point.

- A. App checker
- B. Errors function
- C. Solution checker
- D. Power Platform admin center

Answer: AC

Explanation:
Scenario: The testing team reports that one of the canvas apps is not working as expected. An error message displays as specific pages load.
A: The App checker is now available to help provide a clear list of formula issues in your app, and to provide items to fix to make your app accessible. The App checker is an area that the PowerApps team will continue to invest in, and build on in order help to make debugging, performance and best practice decisions an easier and more guided experience.
C: With the solution checker feature, you can perform a rich static analysis check on your solutions against a set of best practice rules and quickly identify these problematic patterns. After the check completes, you receive a detailed report that lists the issues identified, the components and code affected, and links to documentation that describes how to resolve each issue.
Reference:
<https://powerapps.microsoft.com/en-us/blog/new-app-checker-helps-you-fix-errors-and-make-accessible-apps/>

NEW QUESTION 3

DRAG DROP - (Topic 1)
You need to recommend the appropriate messaging channel solutions for the organization.
What should you recommend? To answer, drag the appropriate messaging options to the correct user types. Each messaging option may be used once, more than once, or not at all. You may need to drag the split bar between panes or scroll to view content.
NOTE: Each correct selection is worth one point.

Messaging options	User type	Messaging option
Power Apps portals	Worker support agents	
Dynamics 365 Customer Service	Patients	
Omnichannel for Customer Service dashboard		

- A. Mastered
- B. Not Mastered

Answer: A

Explanation:
Box 1: Omnichannel for Customer Service dashboard
Scenario: Workers must be able to communicate in near real-time with worker support agents.
The company has a team or worker support agents that respond to inquiries from current and prospective workers. Some of the worker support agents are multilingual.

If you choose to expand your customer service offering to provide chat and channels, the Customer Service workspace seamlessly adjusts to support managing conversations as well.

Note: As an agent with the Customer Service Representative security role, when you open Customer Service workspace, you start on the Customer Service Agent Dashboard unless your administrator has changed the default view. This dashboard shows you your active cases, cases you can work in queues you are assigned to, and your open activities. You can open existing cases and activities or begin working new cases from the queues you are assigned to and create activities.

Box 2: Dynamics 365 Customer Service

Scenario: First Up uses an on-premises system to manage current and historical patient data including medications and medical visits.

NEW QUESTION 4

DRAG DROP - (Topic 2)

You need to propose a solution for form requirements.

What should you recommend? To answer, drag the appropriate solutions to the correct requirements. Each solution may be used once, more than once, or not at all. You may need to drag the split bar between panes or scroll to view content.

NOTE: Each correct selection is worth one point.

Solutions	Requirement	Solution
Field controls	Phone number format	
Workflow	Sections of Agents case form	
Custom development		

- A. Mastered
- B. Not Mastered

Answer: A

Explanation:

Box 1: Field controls

You must standardize the format used by agents to enter customer phone numbers.

Box 2: Workflow

Log issues as cases. The case form must show variable sections based on the case type.

NEW QUESTION 5

- (Topic 2)

You need to recommend a feature that erases agent workloads and resolves reported issues.

What should you recommend?

- A. Dynamics 365 Customer Service default functionality
- B. Microsoft AppSource
- C. Microsoft Store

Answer: A

Explanation:

Scenario: Agents need a way to track reservation issues. Use Dynamics 365 Customer Service to:

? Track customer issues through cases

Reference:

<https://docs.microsoft.com/en-us/dynamics365/customer-service/overview>

NEW QUESTION 6

- (Topic 2)

You need to recommend a solution for agents when working with customers to make reservations.
What should you recommend?

- A. task flows
- B. Business Process Flows
- C. workflows
- D. Power Automate

Answer: B

Explanation:

Business process flows provide a guide for people to get work done. They provide a streamlined user experience that leads people through the processes their organization has defined for interactions that need to be advanced to a conclusion of some kind.

Use business process flows to define a set of steps for people to follow to take them to a desired outcome.

With business processes flows available as an entity, you can now use advanced finds, views, charts, and dashboards sourced from business process flow data for a given entity, such as a lead or opportunity.

Scenario:

- ? Agents need a solution to replace paper reservation checklists.
- ? Agents need dashboards to show a current count of all reservations on the entity.
- ? Agents need a way to track reservation issues.
- ? Agents need a visual indicator in the interface to determine the reservation step to provide a seamless customer experience.

NEW QUESTION 7

HOTSPOT - (Topic 3)

You need to recommend a solution to meet user interface requirements.

What should you recommend? To answer, select the appropriate options in the answer area.

NOTE: Each correct selection is worth one point.

Requirement	Solution
Visual representation of gauge readings with minimum and maximum tolerances.	<div><div></div><div>Create and embed a Power BI radial gauge. Create and embed a custom visualization component. Create and embed a standard Power Apps donut chart.</div></div>
Add visibility to the manufacturing inspection records for onsite technicians.	<div><div></div><div>Configure mobile offline synchronization. Add an inspection order to the work order form Modify the sitemap for Dynamics 365 Field Service.</div></div>

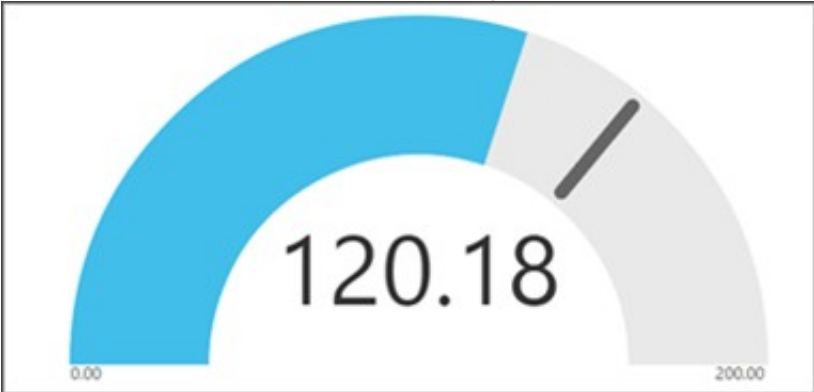
- A. Mastered
- B. Not Mastered

Answer: A

Explanation:

Box 1: Create and embed a Power Bi radial gauge

A radial gauge chart has a circular arc and shows a single value that measures progress toward a goal or a Key Performance Indicator (KPI). The line (or needle) represents the goal or target value. The shading represents the progress toward that goal. The value inside the arc represents the progress value. Power BI spreads all possible values evenly along the arc, from the minimum (left-most value) to the maximum (right-most value).



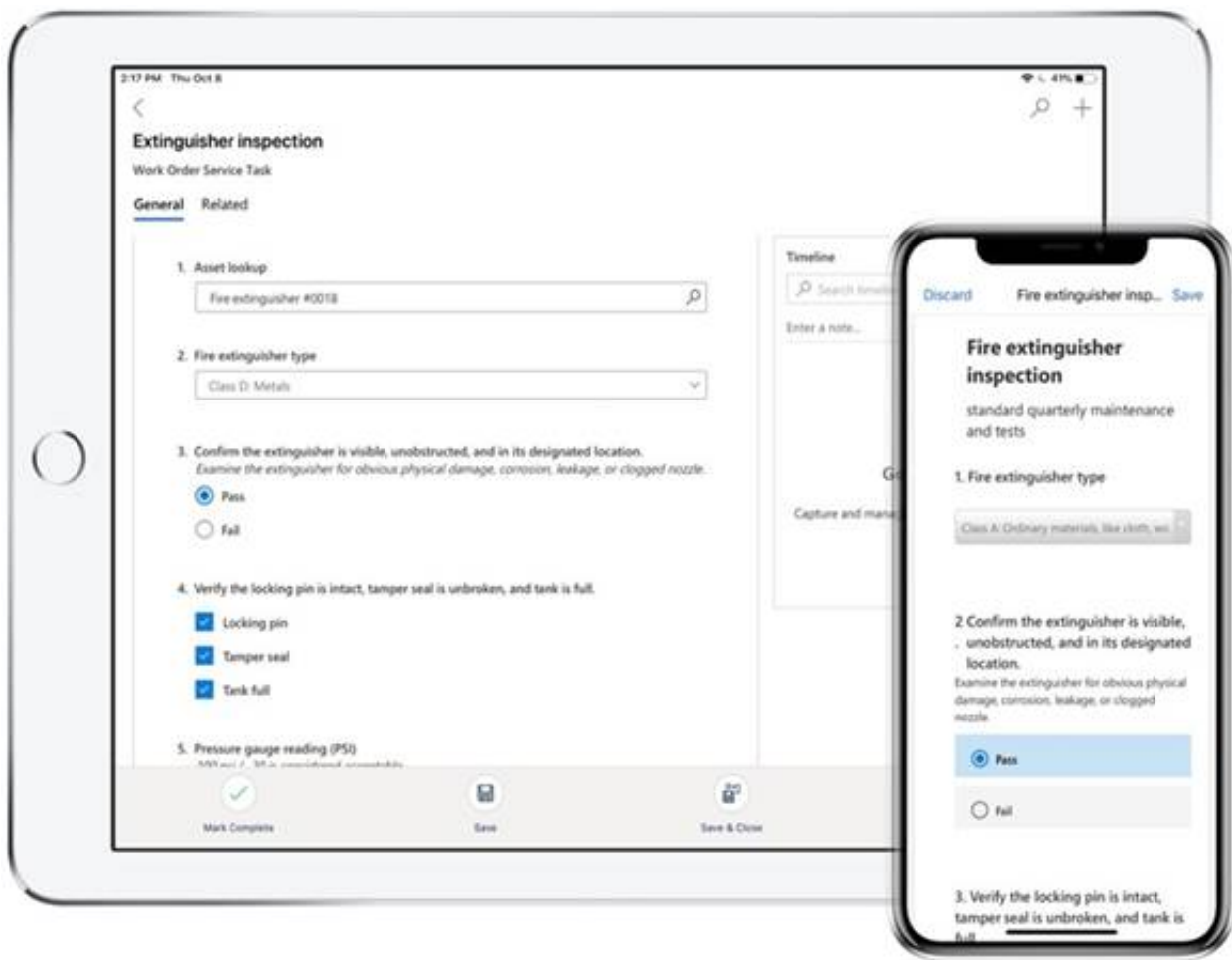
In this example, you're a car retailer tracking the sales team's average sales per month. The needle represents a 140 cars sales goal. The minimum possible average sales is 0 and the maximum is 200. The blue shading shows that the team is averaging approximately 120 sales this month.

Box 2: Add an inspection order to the work order form

You can add inspections to work orders in Dynamics 365 Field Service.

Field Service inspections are digital forms that technicians use to quickly and easily answer a list of questions as part of a work order. The list of questions can include safety protocols, pass-and-fail tests for a customer asset, an interview with a customer, or other audits and assessments performed before, during, or after a work order.

Example:



NEW QUESTION 8

- (Topic 3)

You need to manage user access to the app.

Which two connection types should you recommend? Each correct answer presents part of the solution.

NOTE: Each correct selection is worth one point.

- A. Virtual table with a customer connector

Office 365 Outlook connector

- B. Microsoft Dataverse connector
D. Office 365 Users connector

Answer: CD

Explanation:

Office 365 Users lets you access user profiles in your organization using your Office 365 account. You can use the Use the connection in your Power Platform app. Dataverse is part of the Microsoft 365 collaboration and productivity tools. Using federation, applications can connect to Dataverse using the same system user identities and credentials available in an Azure Active Directory based network.

Scenario:

? Users must be active employees of Fabrikam.

? Quality inspection app: Fabrikam is evaluating Microsoft Power Platform to determine whether it can meet the company's requirements for a manufacturing defect and quality inspection solution. Each machine produced must be subjected to a quality inspection at various points during production. Each machine must undergo a more extensive quality inspection before the machine can be shipped to the customer.

Reference:

<https://docs.microsoft.com/en-us/powerapps/maker/canvas-apps/connections/connection-office365-users>

NEW QUESTION 9

- (Topic 3)

You need to recommend an environment for the inspection solution. Where should you recommend installing the solution?

- A. within the Dynamics 365 Field Service environment
B. in a separate Microsoft Dataverse environment in the same instance as the Dynamics 365 Field Service environment
C. in a separate Dataverse environment with Dynamics 365 apps enabled
D. within the default Dynamics 365 Field Service environment

Answer: A

NEW QUESTION 10

HOTSPOT - (Topic 4)

A company reports the following issues with an existing data management system.

? Users cannot search for specific records by using a user-friendly ID or record identifier.

? Users occasionally enter data into fields that is not required.

? The record form displays all fields. Many of the fields are not used.

You need to ensure that the Power Platform solution will ensure data quality can be properly maintained.

Which component should you use? To answer, select the appropriate options in the answer area.

NOTE: Each correct selection is worth one point.

Requirement

Solution

Ensure that users can search for specific records by using a unique identifier.

Business rule
Autonumber column
Business process flow
Duplicate detection rule

You must prevent data entry into columns that do not require entry.

Business rule
Real time workflow
Business process flow
Duplicate detection rule

Answer:

Requirement

Solution

Ensure that users can search for specific records by using a unique identifier.

Business rule
Autonumber column
Business process flow
Duplicate detection rule

You must prevent data entry into columns that do not require entry.

Business rule
Real time workflow
Business process flow
Duplicate detection rule

- A. Mastered
- B. Not Mastered

Answer: A

Explanation:

Box 1: Autonumber column

Autonumber columns are columns that automatically generate alphanumeric strings whenever they are created.

Box 2: Business rule

By combining conditions and actions, you can do any of the following with business rules:

- ? Enable or disable columns
- ? Set column values
- ? Clear column values
- ? Set column requirement levels
- ? Show or hide columns
- ? Validate data and show error messages
- ? Create business recommendations based on business intelligence.

NEW QUESTION 10

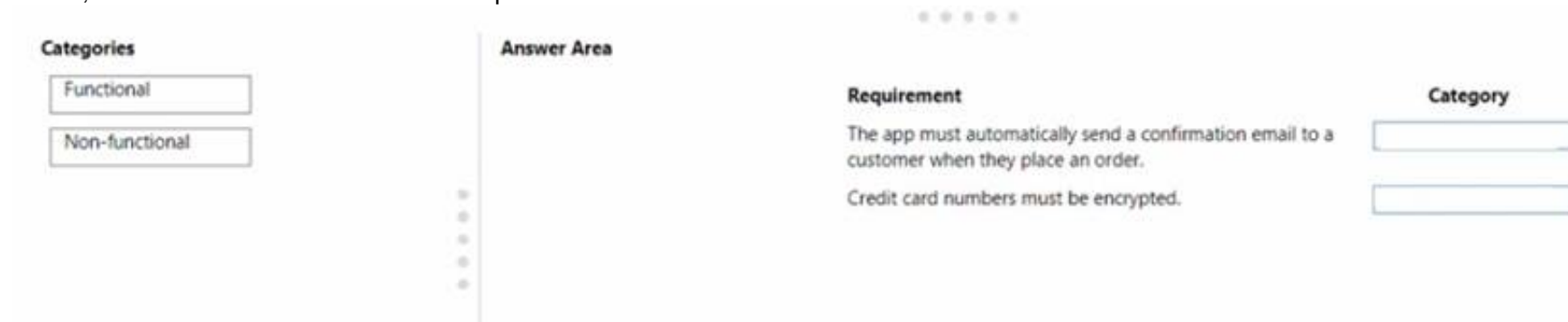
DRAG DROP - (Topic 4)

You are a Microsoft Power Platform architect reviewing requirements for an online shopping app.

You need to identify requirement types for the app.

How should you categorize the requirements? To answer, drag the appropriate categories to the correct requirements. Each category may be used once, more than once, or not at all. You may need to drag the split bar between panes or scroll to view content

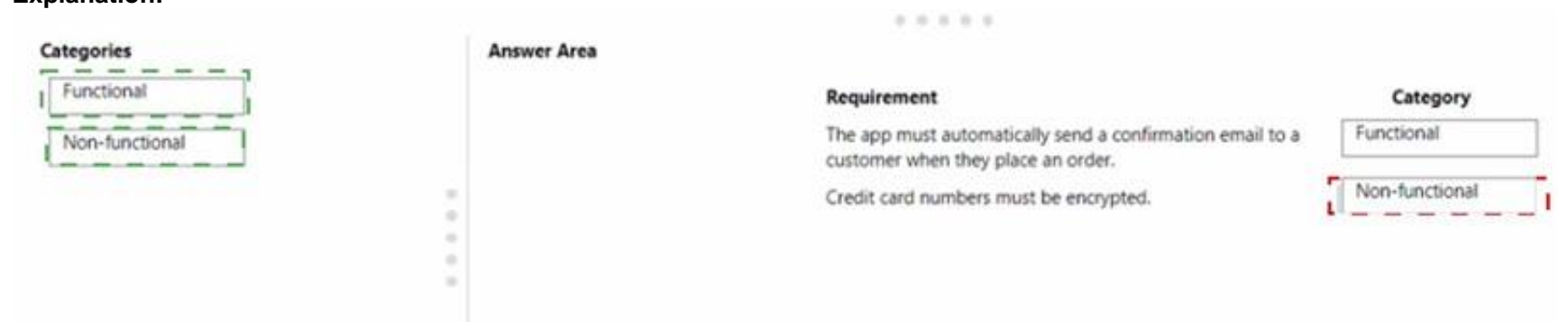
NOTE; Each correct selection is worth one point.



- A. Mastered
- B. Not Mastered

Answer: A

Explanation:



NEW QUESTION 14

- (Topic 4)

You are designing a self-service portal for a company. The portal must meet the following requirements:

- ? Customers must be able to submit and review cases.
 - ? Customers must be able to chat with service representatives in near real time.
 - ? Allow service representatives to select cases from queues and use knowledge articles to resolve customer concerns.
- You need to recommend solutions for the company that do not require custom development.

Which three apps or services should you recommend? Each correct answer presents part of the solution.

NOTE: Each correct selection is worth one point.

- A. Dynamics 365 Field Service
- B. Dynamics 365 Customer Service
- C. Omnichannel for Customer Service
- D. Customer Insights
- E. Customer self-service portal

Answer: BCE

Explanation:

Reference:

<https://docs.microsoft.com/en-us/powerapps/maker/portals/portal-templates>

<https://docs.microsoft.com/en-us/dynamics365/customer-service/embed-chat-widget-portal>

NEW QUESTION 19

- (Topic 4)

A company provides professional development certifications to technologies around the world. The company uses multiple call centers to support customers. The company plans to implement Dynamics 365 Customer Service.

The company must increase productivity for call center employees. The solution must meet the following requirements:

? Handle multiple customer interactions at once

? Ensure that users can access information from several business applications.

? Interact with customers by using the following channels: chat, phone calls, emails, and online reviews.

? Implement all functionality in a single interface.

You need to recommend a solution that meets the requirements of the company. What should you recommend?

A. Omnichannel for Customer Service

B. Live Assist for Microsoft Dynamics 365 Powered by CafeX

C. LinkedIn connector

D. Unified Service Desk

Answer: A

Explanation:

Omnichannel for Customer Service is a robust application that extends the power of Dynamics 365 Customer Service to enable organizations to instantly connect and engage with their customers via channels like Live Chat and SMS.

Omnichannel for Customer Service also provides a modern, customizable, high- productivity app that allows agents to engage with customers across different channels. The application offers contextual customer identification, real-time notification, integrated communication, and agent productivity tools like KB integration, search, and case creation

to ensure agents are effective.

Reference:

<https://docs.microsoft.com/en-us/dynamics365/customer-service/introduction-omnichannel>

NEW QUESTION 24

- (Topic 4)

A company uses manual processes to track interactions with customers. The company wants to use Power Platform to improve productivity.

The company has the following requirements:

? Provide customers with an online portal where they can submit and review cases.

? Ensure that customers can chat online with a customer service representative at any time.

? Route chats to customer service representatives based on skill and availability.

You need to recommend a solution to the company.

Which three components should you recommend? Each correct answer presents part of the solution.

NOTE: Each correct selection is worth one point.

A. Dynamics 365 Virtual Agents chatbots

B. Customer self-service portal

C. Dynamics 365 Field Service

D. Business process flows

E. Omnichannel for Customer Service

Answer: BDE

Explanation:

B: Customer self-service portal: A customer self-service portal enables customers to access self-service knowledge, support resources, view the progress of their cases, and provide feedback.

Note: Based on the selected environment in Power Apps, you can create a Dataverse starter portal or a portal in an environment containing customer engagement apps (Dynamics 365 Sales, Dynamics 365 Customer Service, Dynamics 365 Field Service, Dynamics 365 Marketing, and Dynamics 365 Project Service Automation).

E: Omnichannel for Customer Service offers a suite of capabilities that extend the power of Dynamics 365 Customer Service Enterprise to enable organizations to instantly connect and engage with their customers across digital messaging channels.

Reference:

<https://docs.microsoft.com/en-us/powerapps/maker/portals/portal-templates> <https://docs.microsoft.com/en-us/dynamics365/customer-service/embed-chat-widget-portal>

NEW QUESTION 27

- (Topic 4)

You are designing a database table for a client. You have the following requirements:

? Maintain a comprehensive list of colors and their corresponding RGB values and hexadecimal values.

? Prevent the addition of duplicate colors based on the hexadecimal value for the color.

You need to recommend a design for the table.

Which two actions should the client perform after the table is created? Each correct answer presents part of the solution.

NOTE: Each correct selection is worth one point.

A. Mark the hex value column as business required.

B. Configure and schedule a recurring bulk record deletion job.

C. Create alternate keys for the table.

D. Mark the RGB value column as business required.

Answer: CD

Explanation:

B: Setting a column to Business Required means that the default behavior of a model- driven or canvas app will enforce this requirement in the app.

C: With alternate keys you can now define a column in a Dataverse table to correspond to a unique identifier (or unique combination of columns) used by the external data store. This alternate key can be used to uniquely identify a record in Dataverse in place of the primary

key. You must be able to define which columns represent a unique identity for your records. Once you identify the columns that are unique to the table, you can declare them as alternate keys through the customization user interface (UI) or in the code.

Reference:

<https://docs.microsoft.com/en-us/powerapps/maker/data-platform/create-edit-field-portal>
<https://docs.microsoft.com/en-us/powerapps/developer/data-platform/define-alternate-keys- entity>

NEW QUESTION 29

DRAG DROP - (Topic 4)

You are overseeing the data migration for a Microsoft Power Platform solution. The migration team is performing a test migration with a subset of data. The migration team reports the following findings:
 ? Users who own account rows are receiving system generated emails.
 ? Data that is not part of the migration is being added to the Contact and Appointment tables.
 ? The size of the log listed on the Power Platform admin center Capacity page has increased significantly.
 You need to recommend strategies to resolve the reported issues.

What should you recommend? To answer, drag the appropriate resolution to the correct migration problem. Each resolution may be used once, more than once, or not at all. You may need to drag the split bar between panes or scroll to view content.
 NOTE: Each correct selection is worth one point.

Resolution strategies	Migration issue	Resolution strategy
Disable auditing.	Users who own account rows are receiving system generated emails.	
Disable duplicate detection.	Data that is not part of the migration is being added to the Contact and Appointment tables.	
Disable all custom JavaScript functions.	The size of the log listed on the Power Platform admin center Capacity page has increased significantly.	
Disable all workflows, plug-ins, and Power Platform admin center		

Answer:

Resolution strategies	Migration issue	Resolution strategy
Disable auditing.	Users who own account rows are receiving system generated emails.	Disable duplicate detection.
Disable duplicate detection.	Data that is not part of the migration is being added to the Contact and Appointment tables.	Disable all workflows, plug-ins, and Power Platform admin center
Disable all custom JavaScript functions.	The size of the log listed on the Power Platform admin center Capacity page has increased significantly.	Disable auditing.
Disable all workflows, plug-ins, and Power Platform admin center		

- A. Mastered
- B. Not Mastered

Answer: A

Explanation:

Box 1: Disable duplicate detection
 Duplicate detection has rules for sending emails.
 Box 2: Disable all workflows, plug-ins, and Power Platform admin center
 Box 3: Disable auditing
 Auditing affects the size of the log file.

NEW QUESTION 32

DRAG DROP - (Topic 4)

You are designing data loss policies for a Microsoft Power Platform implementation. You have the following requirements:
 • Solutions that use the HTTP connector must not include any other connectors.
 • Prevent the use of the Microsoft Forms connector.
 • Allow the use of the Azure DevOps connector.
 You need to determine in which data policy group to add each connector.

Data policy groups	Connector	Data policy group
Business	HTTP connector	
Non-business	Azure DevOps connector	
Blocked	Microsoft Forms connector	

- A. Mastered
- B. Not Mastered

Answer: A

Explanation:

Box 1: Business

If you put a connector in the Business group, it can only be used with other connectors from that group in any given app or flow.

Box 2: Non-business

DLP policies enforce rules for which connectors can be used together by classifying connectors as either Business or Non-Business.

Box 3: Blocked

Sometimes you might want to block the usage of certain connectors altogether by classifying them as Blocked.

Data policy group Business blocked

NEW QUESTION 35

- (Topic 4)

A company sells antique books. The company stores data about book locations in an existing system by using the following database fields: Room, Shelf.

The company must import the data from the existing system into a Power Platform solution. Existing data into must be modified to match the design of the new solution.

You need to recommend a solution to combine the room and shelf fields into a single column during the import process.

Which tool should you recommend?

- A. Power Platform dataflows
- B. Data Import Wizard
- C. import from CSV
- D. Microsoft Excel Online

Answer: B

Explanation:

Dataverse includes a web application tool called Import Data Wizard. You use this tool to import data records from one or more comma-separated values (.csv), XML Spreadsheet 2003 (.xml), or text files.

Use transformation mapping to modify data before importing it. For example, split a full name that is contained in the source file into a first name and a last name to match the target columns for a table.

Note:

? To implement data import, you typically do the following:

? Create a comma-separated values (CSV), XML Spreadsheet 2003 (XMLSS), or text source file.

? Create a data map or use an existing data map.

? Create a comma-separated values (CSV), XML Spreadsheet 2003 (XMLSS), or text source file.

? Create a data map or use an existing data map.

? Associate an import file with a data map.

? Upload the content from a source file to the associated import file.

? Parse the import file.

? Transform the parsed data.

? Upload the transformed data into the target Dataverse server.

Reference:

<https://docs.microsoft.com/en-us/powerapps/developer/data-platform/import-data>

<https://docs.microsoft.com/en-us/powerapps/developer/data-platform/add-transformation-mappings-import>

NEW QUESTION 37

HOTSPOT - (Topic 4)

An automobile parts manufacturer wants to replace an existing system with a Microsoft Power Platform solution. The company has been experiencing undesired data changes in their current system. The cause of the changes is due to the relationships that are set up between tables in the database that the system uses.

The new solution must meet the following requirements:

- Track vehicle manufacturers and models.
- Display a list of all models that a manufacturer produces.

Ensure that each vehicle model can be associated to only one manufacturer.

- Delete all associated models when a user deletes a manufacturer.

- Automatically populate information from the manufacturer when creating a new model from the model list on the manufacturer page.

You need to recommend table relationships to meet the business requirements. Which relationship settings should you recommend? To answer, select the appropriate

options in the answer area.

NOTE: Each correct selection is worth one point.

Answer Area

Business requirement	Relationship
The system must delete all associated models when a user deletes a manufacturer.	<div>Use a parental 1:N relationship between manufacturer and model.</div> <div>Use a parental 1:N relationship between manufacturer and model.</div> <div>Use a referential 1:N relationship between manufacturer and model.</div> <div>Use field mappings in 1:N relationship between manufacturer and model.</div> <div>Use an N:N relationship between manufacturer and model.</div>
The system must auto-populate information from the manufacturer when creating a new model from the model list on the manufacturer page.	<div>Use field mappings in 1:N relationship between manufacturer and model.</div> <div>Use a parental 1:N relationship between manufacturer and model.</div> <div>Use a referential 1:N relationship between manufacturer and model.</div> <div>Use field mappings in 1:N relationship between manufacturer and model.</div> <div>Use an N:N relationship between manufacturer and model.</div>

- A. Mastered
- B. Not Mastered

Answer: A

Explanation:

Answer Area

Business requirement	Relationship
The system must delete all associated models when a user deletes a manufacturer.	<div>Use a parental 1:N relationship between manufacturer and model.</div> <div>Use a parental 1:N relationship between manufacturer and model.</div> <div>Use a referential 1:N relationship between manufacturer and model.</div> <div>Use field mappings in 1:N relationship between manufacturer and model.</div> <div>Use an N:N relationship between manufacturer and model.</div>
The system must auto-populate information from the manufacturer when creating a new model from the model list on the manufacturer page.	<div>Use field mappings in 1:N relationship between manufacturer and model.</div> <div>Use a parental 1:N relationship between manufacturer and model.</div> <div>Use a referential 1:N relationship between manufacturer and model.</div> <div>Use field mappings in 1:N relationship between manufacturer and model.</div> <div>Use an N:N relationship between manufacturer and model.</div>

NEW QUESTION 38

- (Topic 4)

You are designing a Microsoft Power Platform solution to help a company manage sales leads.

The solution has the following requirements:

? Ensure that users follow a predefined sales process regardless of the device that employees use to access the app.

? Respond to sales events by using organization-defined best practices.

You need to recommend a component for the app. What should you recommend?

- A. Power Automate cloud flow
- B. Business process flow
- C. Power Automate desktop flow
- D. Playbook

Answer: B

Explanation:

You can help ensure that people enter data consistently and follow the same steps every time they work with a customer by creating a business process flow. For example, you might want to create a business process flow to have everyone handle customer service requests the same way, or to require that people get approval for an invoice before submitting an order. Business process flows use the same underlying technology as other processes, but the capabilities that they provide are very different from other features that use processes.

Reference:

<https://docs.microsoft.com/en-us/power-automate/business-process-flows-overview>

NEW QUESTION 39

HOTSPOT - (Topic 4)

A company plans to create a Microsoft Power Platform solution that integrates with Dynamics 365 Sales. The solution must meet the following requirements:

- Connect directly with a Microsoft Azure SQL database as an external data source at run time where specific data is available in the Dynamics 365 Sales solution without the need for data replication.

- An external system needs to send data to the company's Dynamics 365 Sales solution. You need to recommend the most suitable solution to integrate Dynamics 365 Sales with both systems.

What should you recommend? To answer, select the appropriate option in the answer area.

Answer Area

Integration requirement	Solutions
Have read-only visibility of data from an external Azure SQL database.	<div>Use virtual tables.</div> <div>Use a custom plug-in.</div> <div>Use Dynamics 365 Web API.</div> <div>Use a web resource to display data.</div>
External system sends data to Dynamics 365 Sales.	<div>Use a custom plug-in.</div> <div>Use Dynamics 365 Web API.</div> <div>Use a web resource to display data.</div>

- A. Mastered
- B. Not Mastered

Answer: A

Explanation:

Answer Area

Integration requirement	Solutions
Have read-only visibility of data from an external Azure SQL database.	<div>Use virtual tables.</div> <div>Use a custom plug-in.</div> <div>Use Dynamics 365 Web API.</div> <div>Use a web resource to display data.</div>
External system sends data to Dynamics 365 Sales.	<div>Use a custom plug-in.</div> <div>Use Dynamics 365 Web API.</div> <div>Use a web resource to display data.</div>

NEW QUESTION 41

DRAG DROP - (Topic 4)

You are a Microsoft Power Platform architect.

You need to design a process to transport configuration and test data from one environment to a separate environment

Which four actions should you recommend be performed in sequence? To answer, move the appropriate actions from the list of actions to the answer area and arrange them in the correct order.

Actions

Import the ZIP file data.

Import the CSV file data.

Define the schema of the source data to be exported.

Use the schema to export data.

Download the Configuration Migration tool from NuGet.

Create personal views to define the source data to be exported.

Download the schema of the source data to be exported.

Download the Configuration Migration tool from AppSource.

Answer area

1

2

3

4

- A. Mastered
B. Not Mastered

Answer: A

Explanation:

https://learn.microsoft.com/en-us/power-platform/admin/manage-configuration-data

NEW QUESTION 46

HOTSPOT - (Topic 4)

A company uses Microsoft Dataverse to store patient Information-Patient information is managed using Dataverse forms. The company must enforce the following rules to manage data quality:

- Show or hide tabs in the main form based on the column value selected.
- Add a discount code automatically when a new patient row is added. You need to recommend a solution.

What should you recommend? To answer, select the appropriate options in the answer area.

NOTE: Each correct selection is worth one point.

Requirement

Show or hide tabs in the main form based on the column value selected.

Add a discount code automatically when a new patient row is added.

Solution

Business process flow

Plug-in

Client script

Business rule

Business process flow

Business rule

Client script

Business rule

Classic workflow

Business process flow

- A. Mastered
B. Not Mastered

Answer: A

Explanation:

Requirement

Show or hide tabs in the main form based on the column value selected.

Add a discount code automatically when a new patient row is added.

Solution

Business process flow

Plug-in

Client script

Business rule

Business process flow

Business rule

Client script

Business rule

Classic workflow

Business process flow

NEW QUESTION 50

HOTSPOT - (Topic 4)

You are designing a solution to continually import data from several data sources into Microsoft Dataverse. The solution must meet the following requirements:

- Include integrated error handling for records that fail to import successfully into Dataverse.

Augment data with AI and machine learning models. You need to select a component for each requirement

Which components should you use? To answer, select the appropriate options in the answer area

NOTE: Each correct selection is worth one point.

Answer Area

Requirement	Component
Augment data with AI and machine learning models.	<div>Analytical dataflow Power Apps dataflow Logic Apps Analytical dataflow Azure Data Factory</div>
Include integrated error handling in place for records that fail to import.	<div>Power Apps dataflow Power Apps dataflow Logic Apps Analytical dataflow</div>

- A. Mastered
B. Not Mastered

Answer: A

Explanation:

Answer Area

Requirement	Component
Augment data with AI and machine learning models.	<div>Analytical dataflow Power Apps dataflow Logic Apps Analytical dataflow Azure Data Factory</div>
Include integrated error handling in place for records that fail to import.	<div>Power Apps dataflow Power Apps dataflow Logic Apps Analytical dataflow</div>

NEW QUESTION 54

DRAG DROP - (Topic 4)

A company uses Microsoft Power Platform solutions. The company plans to set up application lifecycle management (ALM) capabilities to store the solutions in source control, which will be used to automate the release process. You need to set up the initial ALM infrastructure to store the solutions in source control. Which four actions should you perform in sequence? To answer, move the appropriate actions from the list of actions to the answer area and arrange them in the correct order.

Actions	Steps
Run the pipeline.	1
Create an Export pipeline.	2
Create an Azure DevOps Project.	3
Install the Microsoft Power Platform Build Tools.	4
Create a Release pipeline.	
Add a task for Microsoft Power Platform Import Solution.	

- A. Mastered
B. Not Mastered

Answer: A

Explanation:

Actions	Steps
Run the pipeline.	1
Create an Export pipeline.	2
Create an Azure DevOps Project.	3
Install the Microsoft Power Platform Build Tools.	4
Create a Release pipeline.	
Add a task for Microsoft Power Platform Import Solution.	

NEW QUESTION 57

HOTSPOT - (Topic 4)

You are working with a customer to plan a go-live deployment to their production environment. The solution includes several apps and environment variables. The superuser team manages the production environment that is secured by using a specific environment Azure AD security group. The following issues have been identified:

- The super user team cannot access make.powerapps.com to open and set the environment variables.
- Users are added to the environment Azure AD security group and are not able to access the model-driven app.
- Users are added to the environment Azure AD security group and are not able to access the canvas app.

You need to resolve the issues. What should you do? To answer, select the appropriate options in the answer area. NOTE: Each correct selection is worth one point.

Answer Area

Issue

The superuser team cannot set the environment variables.

Resolution

Assign the System Customizer role.

Assign the System Customizer role.

Assign the Basic User role.

Assign the Service Reader role.

Assign the Office Collaborator role.

Users cannot access the model-driven app.

Assign the Basic User role.

Assign the Basic User role.

Assign the Service Reader role.

Assign the Office Collaborator role.

Add the Azure AD Security Group.

Users cannot access the canvas app.

Add users to an Azure AD Security Group.

Assign the System Customizer role.

Assign the Service Reader role.

Add users to the superuser team.

Add users to an Azure AD Security Group.

- A. Mastered
- B. Not Mastered

Answer: A

Explanation:

Answer Area

Issue

The superuser team cannot set the environment variables.

Resolution

Assign the System Customizer role.

Assign the System Customizer role.

Assign the Basic User role.

Assign the Service Reader role.

Assign the Office Collaborator role.

Users cannot access the model-driven app.

Assign the Basic User role.

Assign the Basic User role.

Assign the Service Reader role.

Assign the Office Collaborator role.

Add the Azure AD Security Group.

Users cannot access the canvas app.

Add users to an Azure AD Security Group.

Assign the System Customizer role.

Assign the Service Reader role.

Add users to the superuser team.

Add users to an Azure AD Security Group.

NEW QUESTION 61

HOTSPOT - (Topic 4)

You are a evaluating a solution design. You need to test the following scenarios: Mimic a user using an app.

- Obtain formal approval that an app meets customer-provided criteria.
- Confirmation that an app can manage expected peak loads.

Which test types should you use? To answer, select the appropriate options in the answer area.

NOTE: Each correct selection is worth one point.

Answer Area

Scenario

Mimic a user using an app.

Test type

Acceptance testing

UI testing

Acceptance testing

Performance testing

Load testing

Obtain formal approval that an app meets customer-provided criteria.

Acceptance testing

Migration testing

Acceptance testing

Performance testing

UI testing

Confirmation that an app can manage expected peak loads.

Performance testing

Unit testing

Acceptance testing

Performance testing

Integration testing

Answer:

Answer Area

Scenario

Mimic a user using an app.

Test type

Acceptance testing	▼
UI testing	
Acceptance testing	
Performance testing	
Load testing	

Acceptance testing	▼
Migration testing	
Acceptance testing	
Performance testing	
UI testing	

Performance testing	▼
Unit testing	
Acceptance testing	
Performance testing	
Integration testing	

- A. Mastered
- B. Not Mastered

Answer: A

NEW QUESTION 66

- (Topic 4)

A company wants to add an interactive checklist to a Power Platform solution to ensure that salespeople are following the same steps when qualifying leads. You need to recommend a solution that will incorporate this checklist. What should you recommend?

- A. Mastered
- B. Not Mastered

Answer: A

NEW QUESTION 70

HOTSPOT - (Topic 4)

You are designing a Microsoft Power Platform solution for a company. Which components should you recommend? To answer, select the appropriate options in the answer area.
NOTE: Each correct selection is worth one point.

Requirement

Component

Allow users to change the status of a record only if a custom column named Reason is populated.

	▼
Business rule	
Power Automate flow	
Asynchronous plug-in	
Background workflow	

Prompt users to update each opportunity product record when an opportunity is won or lost.

	▼
JavaScript code	
Real-time workflow	
Power Automate flow	
Asynchronous plug-in	

- A. Mastered
- B. Not Mastered

Answer: A

Explanation:

Box 1: Business rule

You can create business rules and recommendations to apply logic and validations without writing code or creating plug-ins. Business rules provide a simple interface to implement and maintain fast-changing and commonly used rules.

Box 2: Power Automate flow

Trigger the Power Automate flow with “When a record is updated”, then add a Condition in the flow and configure it with Status Label equals to Won.

NEW QUESTION 73

- (Topic 4)

A company has a model-driven app. The app has forms with both Business Rules and JavaScript added to handle the business logic on the form. The form

contains logic that is enforced by using business rules. The company wants to apply the business rules to all forms in the app. You need to recommend a simplified form setup so the form can be maintained moving forward. What should you recommend?

- A. Manage the business logic with a Power Apps Component Framework (PCF) control.
- B. Evaluate whether complex parts of the logic can be solved by using Power Apps Component Framework (PCF) controls.
- C. Use Business Rules for the remaining functionality.
- D. Remove the Business Rules and use only JavaScript.
- E. Update logic to ensure Business Rules are optimized.
- F. Use JavaScript for the remaining functionality.

Answer: B

Explanation:

PCF controls are reusable. Reference:

<https://docs.microsoft.com/en-us/powerapps/developer/component-framework/overview>

NEW QUESTION 74

- (Topic 4)

A local bank uses Microsoft Power Platform apps to store customer data.

The bank IT director discovers that all employees can see the social security numbers of their customers. The IT team does not understand how field-level security works and needs help with the design.

You need to recommend a solution to the bank that meets the following requirements:

- The system must restrict access to customer social security numbers to the vice president of finance only.
The vice president of finance must be able to read and update customer social security numbers.

Which two actions should you recommend? Each correct answer presents part of the solution.

NOT: Each correct selection is worth one point

- A. Set the values for the read permission and for the update permission for social security number to yet
- B. Enable field-level security for the member table.
- C. Create a held-level security profile.
- D. Enable field-level security for the social security number column.

Answer: CD

Explanation:

Field-level security is managed by the security profiles. To implement field-level security, a system administrator performs the following tasks.

? Enable field security on one or more fields for a given entity.

? Associate one or more existing security profiles, or create one or more new security profiles to grant the appropriate access to specific users or teams.

Reference:

<https://docs.microsoft.com/en-us/power-platform/admin/field-level-security>

NEW QUESTION 76

- (Topic 4)

You are assessing the capabilities of a project for a customer in the education sector. The solution must meet the following requirements

- include curriculum and student management capabilities.
- Conform to on-going Microsoft platform upgrades.
- Minimize custom coding and configuration

You need to recommend a solution. What should you recommend?

- A. Power Apps portal
- B. Microsoft Power Platform admin center
- C. Microsoft 365 admin center
- D. AppSource

Answer: A

NEW QUESTION 78

DRAG DROP - (Topic 4)

You are a Microsoft Power Platform solution architect capturing requirements for a national retail chain project. The project has the following requirements

- Retail employees must use the application on a company-provided tablet device.
- The app must store data offline.
- Environment capacity must be monitored to ensure usage stays within 80 percent of available capacity.
- Apps are shared with security group teams for users to access.

You need to identify the project's functional and non-functional requirements.

How should you categorize the requirements? To answer, drag the appropriate categories to the correct requirements. Each category may be used once, more than once, or not at all. You may need to drag the split bar between panes or scroll to view content.

Categories	Requirement	Category
Functional	Retail employees must use the application on a company-provided tablet device.	
Non-functional	The app must store data offline.	
	Environment capacity must be monitored to ensure usage stays within 80 percent of available capacity.	
	Apps are shared with security group teams for users to access.	

Answer:

Categories		Requirement	Category
Functional	<div></div> <div></div> <div></div> <div></div>	Retail employees must use the application on a company-provided tablet device.	Functional
Non-functional		The app must store data offline.	Functional
		Environment capacity must be monitored to ensure usage stays within 80 percent of available capacity.	Non-functional
		Apps are shared with security group teams for users to access.	Non-functional

- A. Mastered
- B. Not Mastered

Answer: A

NEW QUESTION 81

DRAG DROP - (Topic 4)

You are designing a Microsoft Power Platform solution that will be deployed to two separate companies in the same Microsoft Office 365 tenant: Contoso, Ltd. and Contoso Pharmaceuticals.

The solution must meet the following security requirements:

- Restrict Contoso, Ltd. users from seeing the Contoso Pharmaceuticals company.
- Restrict access to specific forms.
- Restrict access to specific tables.

What should you recommend? To answer, drag the appropriate security types to the correct restrictions. Each security type may be used once, more than once, or not at all. You may need to drag the split bar between panes or scroll to view content.

NOTE: Each correct selection is worth one point.

Security objects		Restriction	Security object
Security role	<div></div> <div></div> <div></div> <div></div>	Restrict Contoso, Ltd. users from seeing the Contoso Pharmaceuticals company.	
Team		Restrict access to specific forms.	
Security group		Restrict access to specific tables.	
User profile			

Answer:

Security objects		Restriction	Security object
Security role	<div></div> <div></div> <div></div> <div></div>	Restrict Contoso, Ltd. users from seeing the Contoso Pharmaceuticals company.	Team
Team		Restrict access to specific forms.	Security group
Security group		Restrict access to specific tables.	Security role
User profile			

- A. Mastered
- B. Not Mastered

Answer: A

NEW QUESTION 83

HOTSPOT - (Topic 4)

You need to design a Power Platform solution that meets the following requirements:

? Capture data from a row during deletion to be used in an automated process.

? Use AI to process forms and automate data entry from paper-based forms.

Which requirements can be met by using out-of-the box Power Platform components?

Instructions: For each of the following statements, select Yes if the statement is true. Otherwise, select No.

NOTE: Each correct selection is worth one point.

	Yes	No
Capture data from a row during deletion to be used in an automated process.	<input type="radio"/>	<input type="radio"/>
Use AI to process forms and automate data entry from paper-based forms.	<input type="radio"/>	<input type="radio"/>

- A. Mastered
- B. Not Mastered

Answer: A

Explanation:

Box 1: Yes

This can be done with Dataverse flows: The When a row is added, modified or deleted trigger runs a flow whenever a row of a selected table and scope changes or is created.

Box 2: Yes

AI Builder is a Microsoft Power Platform capability that provides AI models that are designed to optimize your business processes. AI Builder enables your business to use AI to automate processes and glean insights from your data in Power Apps and Power Automate.

NEW QUESTION 84

- (Topic 4)
Note: This question is part of a series of questions that present the same scenario. Each question in the series contains a unique solution that might meet the stated goals. Some question sets might have more than one correct solution, while others might not have a correct solution.
After you answer a question in this section, you will NOT be able to return to it. As a result, these questions will not appear in the review screen.
A company plans to automate the expense approval process.
Users currently enter data into an on-premises SQL Server database. You need to allow users to submit expenses from mobile devices.
Solution: Create a canvas app for expense data entry. Install an on-premises gateway. Create a cloud flow for approval and to add data to the SQL Server database.

Does the solution meet the goal?

- A. Yes
- B. No

Answer: A

NEW QUESTION 86

HOTSPOT - (Topic 4)
You are designing a Power Platform solution for a company that provides in-home appliance maintenance. When a customer schedules a service appointment, a dispatcher assigns one technician for a specific time and location.
The solution must capture information about the technician assigned to each appointment and the list of tools that the technician must bring to the appointment.
You need to recommend the data type for the captured information.
Which data type should you use? To answer, select the appropriate options in the answer area.
NOTE: Each correct selection is worth one point.

Requirement	Data type
Capture information about the technician assigned to each service appointment.	<div><div></div><div>▼</div><div>Choice</div><div>Choices</div><div>Customer</div><div>Lookup</div></div>
Select the tools that the technician must bring to an appointment.	<div><div></div><div>▼</div><div>Choices</div><div>Customer</div><div>Lookup</div><div>Text</div></div>

- A. Mastered
- B. Not Mastered

Answer: A

Explanation:
Box 1: Choice
Like Choices below, but can only select one of the option.
Box 2: Choices
You can customize forms (main, quick create, and quick view) and email templates by adding multi-select columns that are called Choices. When you add a choices column, you can specify multiple values that will be available for users to select. When users fill out the form they can select one, multiple, or all the values displayed in a drop-down list.

NEW QUESTION 89

- (Topic 4)
A company has a custom web-based solution that is hosted on Azure. You design a Power Platform solution to provide the company additional capabilities.
You need to integrate the Power Platform solution with the web-based solution.
What should you recommend?

- A. Connection reference
- B. Custom connector
- C. Desktop flow
- D. Data gateway

Answer: B

Explanation:
A custom connector in Power Platform is a wrapper around a REST API that allows Power Automate or Power Apps to communicate with that REST API. Connectors created in Power Automate are available in Power Apps. Likewise, connectors created in Power Apps are available in Power Automate.
Reference:

<https://docs.microsoft.com/en-us/learn/modules/create-custom-connector-power-platform/1-introduction>

NEW QUESTION 93

- (Topic 4)

You are designing an integration between an Azure SQL database and a model-driven app-You have the following requirements:

- Audit updates to the data.
- Assign security role access to tables at the user level.
- Assign security role access to tables at the organization level.
- Enable change tracking.
- Add and update data.

You need to implement virtual tables.

Which two requirements can you meet by using virtual tables? Each correct answer presents a complete solution.

NOTE Each correct selection is worth one point.

- A. Enable change tracking.
- B. Assign security role access to tables at the user level.
- C. Add and update data.
- D. Assign security role access to tables at the organization level.
- E. Audit updates to the data.

Answer: BD

NEW QUESTION 97

HOTSPOT - (Topic 4)

A company plans to create a Power Platform solution that integrates with Dynamics 365 Sales.

The solution must meet the following requirements:

? Connect directly with a Microsoft Azure SQL database as an external data source at run time where specific data is available in the Dynamics 365 Sales solution without the need for data replication.

? An external system needs to send data to the company's Dynamics 365 Sales solution.

You need to recommend the most suitable solution to integrate Dynamics 365 Sales with both systems.

What should you recommend? To answer, select the appropriate option in the answer area.

NOTE: Each correct selection is worth one point.

Integration requirement	Solutions
Have read-only visibility of data from an external Azure SQL database.	<div><div></div><div>Use virtual tables.</div><div>Use a custom plug-in.</div><div>Use Dynamics 365 Web API.</div><div>Use a web resource to display data.</div></div>
External system sends data to Dynamics 365 Sales.	<div><div></div><div>Use a custom plug-in.</div><div>Use Dynamics 365 Web API.</div><div>Use a web resource to display data.</div></div>

Answer:

Integration requirement	Solutions
Have read-only visibility of data from an external Azure SQL database.	<div><div></div><div>Use virtual tables.</div><div>Use a custom plug-in.</div><div>Use Dynamics 365 Web API.</div><div>Use a web resource to display data.</div></div>
External system sends data to Dynamics 365 Sales.	<div><div></div><div>Use a custom plug-in.</div><div>Use Dynamics 365 Web API.</div><div>Use a web resource to display data.</div></div>

- A. Mastered
- B. Not Mastered

Answer: A

Explanation:

Box 1: Use Virtual tables

A virtual entity is a custom entity in Dynamics 365 Customer Engagement (on-premises) that has fields containing data from an external data source. Virtual entities appear in your app to users as regular entity records, but contain data that is sourced from an external database, such as an Azure SQL Database. Records based on virtual entities are available in all clients including custom clients developed using the Dynamics 365 Customer Engagement Web Services.

Box 2: Use Dynamics 365 Web API.

Dynamics 365 Web Services API: Many times, straight database-to-database integrations aren't a possibility. In these cases, the development of a solution may depend on utilization of the Dynamics 365 Customer Engagement web services API (Application Programming Interface).

NEW QUESTION 101

DRAG DROP - (Topic 4)

A client plans to implement Microsoft Power Platform solutions.

The client identifies the following requirements for handling opportunities:

- Users must follow the same set of steps each time they process opportunities
- For opportunities with values greater than \$20,000, a follow-up date and second contact field must appear on the form.
- An error message must display if a follow-up date is not within seven days of the opportunity creation date.

You need to recommend tools to meet the client requirements.

What should you recommend? To answer, drag the appropriate tools to the correct requirement. Each tool may be used once, more than once, or not at all. You may need to drag the split bar between panes or scroll to view content.

NOTE: Each correct selection is worth one point.

Tools

Business Rule

Business process flow

Workflows

Answer Area

Requirement	Tool
Users must follow the same set of steps each time they process opportunities.	
For opportunities with values greater than \$20,000, a follow-up date and second contact field must appear on the form.	
An error message must display if a follow-up date is not within seven days of the opportunity creation date.	

- A. Mastered
B. Not Mastered

Answer: A

Explanation:

Tools

Business Rule

Business process flow

Workflows

Answer Area

Requirement	Tool
Users must follow the same set of steps each time they process opportunities.	Business process flow
For opportunities with values greater than \$20,000, a follow-up date and second contact field must appear on the form.	Business Rule
An error message must display if a follow-up date is not within seven days of the opportunity creation date.	Workflows

NEW QUESTION 106

.....

Thank You for Trying Our Product

We offer two products:

1st - We have Practice Tests Software with Actual Exam Questions

2nd - Questions and Answers in PDF Format

PL-600 Practice Exam Features:

- * PL-600 Questions and Answers Updated Frequently
- * PL-600 Practice Questions Verified by Expert Senior Certified Staff
- * PL-600 Most Realistic Questions that Guarantee you a Pass on Your First Try
- * PL-600 Practice Test Questions in Multiple Choice Formats and Updates for 1 Year

100% Actual & Verified — Instant Download, Please Click
[Order The PL-600 Practice Test Here](#)