

Exam Questions 70-740

Installation, Storage, and Compute with Windows Server 2016

<https://www.2passeasy.com/dumps/70-740/>



NEW QUESTION 1

You have a server that runs Windows Server 2016 Standard.

You create a new three-way mirror storage space. You format the storage space by using ReFS.

Which two features can you use on the new storage space? Each correct answer presents a complete solution.

- A. file and folder permissions
- B. disk quotas
- C. Encrypting File System (EFS)
- D. long file names
- E. Data Deduplication

Answer: AE

NEW QUESTION 2

Note: This question is part of a series of questions that present the same scenario. Each question in the series contains a unique solution that might meet the stated goals. Some question sets might have more than one correct solution, while others might not have a correct solution.

After you answer a question in this section, you will NOT be able to return to it. As a result, these questions will not appear in the review screen.

You have two servers that run Windows Server 2016.

You have a server named Server1 that runs Windows Server 2016. Server1 has the Hyper-V server role and Docker installed.

You pull the Microsoft/iis Docker image to Server1.

You need to view the available space in the Microsoft/iis Docker image. Solution: You run the following commands.

```
docker run --name container1 --isolation hyperv --d Microsoft/iis docker exec --i container1 cmd.exe dir
```

Does this meet the goal?

- A. Yes
- B. No

Answer: B

NEW QUESTION 3

Note: This question is part of a series of questions that present the same scenario. Each question in the series contains a unique solution that might meet the stated goals. Some question sets might have more than one correct solution, while others might not have a correct solution.

After you answer a question in this section, you will NOT be able to return to it. As a result, these questions will not appear in the review screen.

You have two servers that run Windows Server 2016.

You have a server named Server1 that runs Windows Server 2016. Server1 has the Hyper-V server role and Docker installed.

You pull the Microsoft/iis Docker image to Server1.

You need to view the available space in the Microsoft/iis Docker image. Solution: You run the following commands.

```
docker run --name container1 --d Microsoft/iis docker exec --i container1 cmd.exe
```

```
dir
```

Does this meet the goal?

- A. Yes
- B. No

Answer: A

Explanation:

References: https://docs.docker.com/engine/reference/commandline/container_exec/#options <https://www.windows-commandline.com/get-file-size-directory-size-command/>

NEW QUESTION 4

You have a Hyper-V host named Server1 that runs Windows Server 2016. Server1 hosts a virtual machine named VM1 that runs Windows Server 2016.

On VM1, Dynamic Memory is disabled, MAC spoofing is enabled for the virtual network adapter, and checkpoints are disabled. You need to ensure that you can install the Hyper-V server role on VM1. What should you do?

- A. Shut down VM1, enable Dynamic Memory on VM1 and then start VM1.
- B. Configure VM1 to use standard checkpoints.
- C. Disable Hyper-V integration services for VM1 and then restarts VM1.
- D. Shut down VM1, run the Set-VMProcessor cmdlet and then start VM1.

Answer: D

Explanation:

References:

<https://docs.microsoft.com/en-us/virtualization/hyper-v-on-windows/user-guide/nested-virtualization>

NEW QUESTION 5

You plan to deploy three servers that will run Windows Server 2016. The servers will be configured as shown in the following table.

Server name	Hard disk configuration
Server1	Disk1: 250-GB, NTFS-formatted Disk2: 4-TB, ReFS-formatted
Server2	Disk1: 1-TB, NTFS-formatted Disk2: 2-TB, NTFS-formatted Disk3: 500-GB, exFAT-formatted
Server3	Disk1: 8-TB, NTFS-formatted Disk2: 2-TB, ReFS-formatted Disk3: 1-TB, ReFS-formatted

You need to ensure that you can use all of the available space on each disk. What is one of the disks that you must initialize as a GPT disk?

- A. Disk2 on Server3
- B. Disk1 on Server2
- C. Disk3 on Server2
- D. Disk1 on Sever3

Answer: D

NEW QUESTION 6

You have a server named Server1 that runs Windows Server 2016. Windows Defender is enabled on Server1.

Server1 runs an application named App1 that stores various types of files in Microsoft OneDrive for Business, MicrosoftOneDrive, and Microsoft SharePoint Online. App1 also interacts with several local services.

You need to prevent Windows Defender from scanning any files opened by App1. What should you do on Server1?

- A. From the Windows Defender settings, configure a file exclusion.
- B. Run the New-CiPolicy cmdlet.
- C. Modify the real-time protection settings in Windows Defender.
- D. From the Windows Defender settings, configure a process exclusion.

Answer: A

NEW QUESTION 7

You have a Hyper-V server named Server1 that runs Windows Server 2012 R2.

Server1 hosts a virtual machine named VM1 that runs Windows Server 2016. VM1 connects to an external virtual switch named Switch1.

You can ping VM1 from Server1.

You upgrade Server1 to Windows Server 2016.

You need to ensure that you can connect to VM1 by using PowerShell Direct. What should you do?

- A. Configure the firewall rules on Server1.
- B. Enable the Hyper-V extensible switch extensions on Server1.
- C. Upgrade the configuration version of VM1.
- D. Configure the firewall rules on VM1.

Answer: C

NEW QUESTION 8

HOTSPOT

Your network contains an Active Directory forest The forest contains one domain named contoso.com. The domain contains two domain controllers named DC1 and DC2. DC1 holds all of the operations master roles.

During normal network operations, you run the following commands on DC2:

Move-ADDirectoryServerOperationMasterRole -Identity "DC2" -OperationMasterRole PDCEmulator Move-ADDirectoryServerOperationMasterRole -Identity "DC2" -OperationMasterRole RIDMaster DC1 fails.

You remove DC1 from the network, and then you run the following command:

Move-ADDirectoryServerOperationMasterRole -Identity "DC2" -OperationMasterRole SchemaMaster For each of the following statements, select Yes if the statement is true. Otherwise, select No

Statements	Yes	No
DC2 holds the schema master operations role.	<input type="radio"/>	<input type="radio"/>
DC2 holds the PDC emulator master operations role.	<input type="radio"/>	<input type="radio"/>
Currently, you can add additional domains to the forest.	<input type="radio"/>	<input type="radio"/>

- A. Mastered
- B. Not Mastered

Answer: A

Explanation:

Statements	Yes	No
DC2 holds the schema master operations role.	<input type="radio"/>	<input checked="" type="radio"/>
DC2 holds the PDC emulator master operations role.	<input checked="" type="radio"/>	<input type="radio"/>
Currently, you can add additional domains to the forest.	<input type="radio"/>	<input checked="" type="radio"/>

NEW QUESTION 9

DRAG DROP

You are deploying DirectAccess to a server named DA1. Da1 will be located behind a firewall and will have a single network adapter The intermediary network will be IPv4.

You need to configure firewall to support DirectAccess.

Which firewall rules should you create for each type of traffic? To answer, drag the appropriate ports and protocols to the correct traffic types. Each port and protocol may be used once, more than once, or not at all. You may need to drag the split bar between panes or scroll to view content

Ports and Protocols

IP protocol ID 1

TCP 443

IP Protocol ID 41

UDP 3544

Answer Area

Teredo traffic:

6to4 traffic:

IP-HTTPS:

- A. Mastered
- B. Not Mastered

Answer: A

Explanation:

Ports and Protocols

IP protocol ID 1

TCP 443

IP Protocol ID 41

UDP 3544

Answer Area

Teredo traffic:

6to4 traffic:

IP-HTTPS:

UDP 3544

IP Protocol ID 41

TCP 443

NEW QUESTION 10

You have a Hyper-V host named Served That runs Windows Server 2016

Server1 has a virtual machine named VM1 VM1 is configured to run the Docker daemon. On VM1 you have a container network that uses transparent mode

You need to ensure that containers that run on VM1 can obtain IP addresses from DHCP. What should you do?

- A. On VM1, rundocker network connect
- B. On Server1 runGet-VMNetworkAdapter-VMName VM1| Set-VMNetworkAdapter- MacAddressSpoofing On
- C. On Server1, rundocker network connect
- D. On VM1, runGet-VMNetworkAdapter-VMName VM1| Set-VMNetworkAdapter- MacAddressSpoofing On.

Answer: D

NEW QUESTION 10

You need to create highly available storage spaces that connect to directly attached storage on the hosts Which cmdlet should you use?

- A. Enable-ClusterStorageSpacesDiret
- B. Set-StoragePool
- C. Add-ClusterDisk
- D. Update-ClusterVirtualMachineConfiguration

Answer: A

NEW QUESTION 12

HOTSPOT

Your network contains an Active Directory domain named contoso.com The domain contains four servers named Server 1, Server2, Server3, and Server4 that run Windows Server 2016

Server 1 and Server2 are nodes in Hyper-V cluster named Cluster1 You have a highly available virtual machine named VM1

Server1 is the owner node of VM1 Server3and Server4 are nodes of a scale-out file server named Cluster2,

The storage on Server1 is configured as shown in the following table

Location	Type
C:\ClusterStorage\Volume1	iSCSI Cluster Shared Volumes (CSV)
D:\	A locally attached disk
E:\	An iSCSI LUN
\\Cluster2\Share1	A file share on Cluster2

You need to move the virtual disk of VM1 to a different location
What should you do? To answer, select the appropriate options in the answer area

Tool you should move the virtual disk of VM1:

▼

Disk Management
Failover Cluster Manager
Hyper-V Manager
Server Manager

Location to which you should move the virtual disk of VM1:

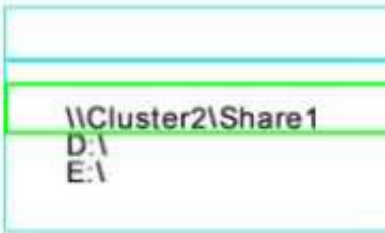
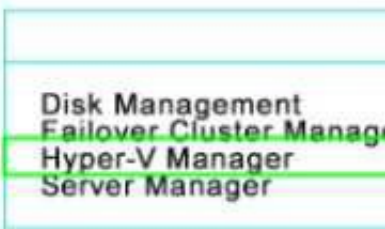
▼

\\Cluster2\Share1
D:\
E:\

- A. Mastered
- B. Not Mastered

Answer: A

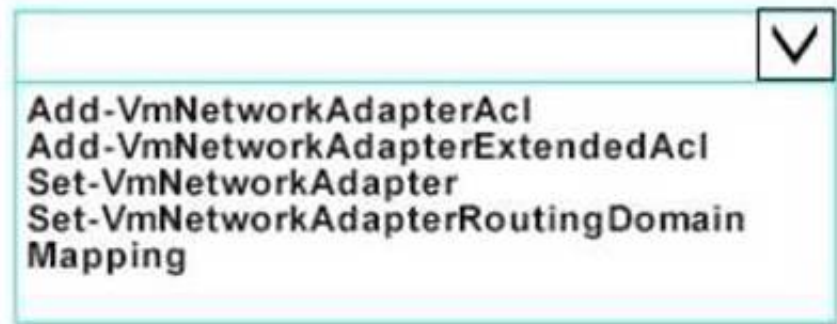
Explanation:



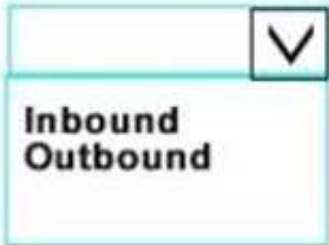
NEW QUESTION 13

HOTSPOT

You have a machine named VM1 that runs Windows Server 2016 VM1 is a Remote Desktop Services (RDS) server. You need to ensure that only TCP port 3389 can be used to connect to VM1 over the network. Which command should you run on the Hyper-V host? To answer, select the appropriate options in the answer area.



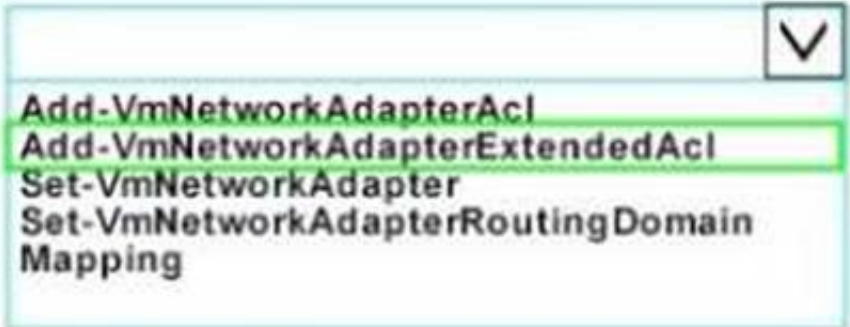
-VMName VM1 -Direction



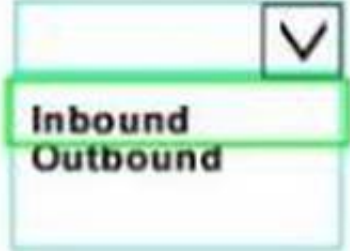
- A. Mastered
- B. Not Mastered

Answer: A

Explanation:



-VMName VM1 -Direction



-Action Allow -LocalPort 3389 -Protocol TCP -Weight 10

NEW QUESTION 17

You need to ensure that VM1 and VM2 can communicate with each other only. The solution must prevent VM1 and VM2 from communicating with Server1. Which cmdlet should you use?

- A. Set-NetNeighbor
- B. Remove-VMSwitchTeamMember
- C. Set-VMSwitch
- D. Enable-VMSwitchExtension

Answer: C

NEW QUESTION 18

Note: This question is part of a series of questions that use the same similar answer choices An answer choice may be correct for more than one question in the series Each question is independent of the other questions in this series. Information and details provided in a question apply only to that question You have a two-node Hyper-V cluster named Cluster1 at a primary location and a stand-alone Hyper- V host named Server1 at a secondary location A virtual machine named VM1 runs on Cluster1 You configure a Hyper-V Replica of VM1 to Server1 You need to perform a Test Fai lover of VM1. Which tool should you use?

- A. the clussvc.exe command
- B. the cluster.exe command
- C. the Computer Management console
- D. the configurehyperv.exe command
- E. the Disk Management console
- F. the Failover Cluster Manager console
- G. the Hyper-V Manager console
- H. the Server Manager Desktop app

Answer: G

NEW QUESTION 22

Note: This question is part of a series of questions that use the same similar answer choices. An answer choice may be correct for more than one question in the series. Each question is independent of the other questions in this series. Information and details provided in a question apply only to that question.

You have a Hyper-V host named Server1 that runs Windows Server 2016. Server1 contains a virtual machine named VM1.

You need to ensure that you can use nested virtualization on VM1. What should you run on Server1?

- A. the Mount-VHD cmdlet
- B. the Diskpart command
- C. the Set-VHD cmdlet
- D. the Set-VM cmdlet
- E. the Set-VMHost cmdlet
- F. the Set-VMProcessor cmdlet
- G. the Install-WindowsFeature cmdlet
- H. the Optimize-VHD cmdlet

Answer: F

NEW QUESTION 27

Note: This question is part of a series of questions that use the same similar answer choices. An answer choice may be correct for more than one question in the series. Each question is independent of the other questions in this series. Information and details provided in a question apply only to that question.

You have a Hyper-V host named Server1 that runs Windows Server 2016. Server1 has a dynamically expanding virtual hard disk (VHD) file that is 900 GB. The VHD contains 400 GB of free space.

You need to reduce the amount of disk space used by the VHD. What should you run?

- A. the Mount-VHD cmdlet
- B. the Diskpart command
- C. the Set-VHD cmdlet
- D. the Set-VM cmdlet
- E. the Set-VMHost cmdlet
- F. the Set-VMProcessor cmdlet
- G. the Install-WindowsFeature cmdlet
- H. the Optimize-VHD cmdlet

Answer: H

NEW QUESTION 31

Note: This question is part of a series of questions that use the same similar answer choices. An answer choice may be correct for more than one question in the series. Each question is independent of the other questions in this series. Information and details provided in a question apply only to that question.

You have a Hyper-V host named Server1 that runs Windows Server 2016. Server1 has a virtual machine named VM1 that uses a single VHDX file. VM1 is configured as shown in the following table.

Configuration	Details
Virtual machine generation	V2
Operating system	Windows 8
File system	NTFS
Number of partitions	1
Disk type	Basic
Unallocated disk space	100 GB

You plan to use VM1 as a virtual Machine Template to deploy shielded virtual machines. You need to ensure that VM1 can be used to deploy shielded virtual machines. What should you run?

- A. the Mount-VHD cmdlet
- B. the Diskpart command
- C. the Set-VHD cmdlet
- D. the Set-VM cmdlet
- E. the Set-VMHost cmdlet
- F. the Set-VMProcessor cmdlet
- G. the Install-WindowsFeature cmdlet
- H. the Optimize-VHD cmdlet

Answer: B

NEW QUESTION 33

In this section, you'll see one or more sets of questions with the same scenario and problem. Each

question presents a unique solution to the problem, and you must determine whether the solution meets the stated goals. Any of the solutions might solve the problem. It is also possible that none of the solutions solve the problem.
Once you answer a question in this section, you will NOT be able to return to it. As a result, these questions will not appear in the review screen
Note: This question is part of a series of questions that present the same scenario. Each question in the series contains a unique solution. Determine whether the solution meets the stated goals.
Your network contains an Active Directory domain named contoso.com. The domain contains a DNS server named Server1. All client computers run Windows 10. On Server1, you have the following zone configuration

ZoneName	ZoneType	IsAutoCreated	IsDsIntegrated	IsReverseLookupZone	IsSign
-----	-----	-----	-----	-----	-----
_msdcs.contoso.com	Primary	False	True	False	False
adatum.com	Forwarder	False	False	False	
contoso.com	Primary	False	True	False	False
fabrikam.com	Primary	False	False	False	True
TrustAnchors	Primary	False	True	False	False

You have the following subnets defined on Server1.

Name	IPv4Subnet	IPv6Subnet
----	-----	-----
Subnet1	{10.0.0.0/24}	
Subnet2	{10.0.1.0/24}	
Subnet3	{192.168.15.0/24}	
Subnet4	{172.16.1.0/24}	

You need to prevent Server1 from resolving queries from DNS clients located on Subnet4 Server1 must resolve queries from all other DNS clients Solution From a Group Policy object (GPO) in the domain, you modify the Network List Manager Policies Does this meet the goal?

- A. Yes
- B. No

Answer: B

NEW QUESTION 37

In this section, you'll see one or more sets of questions with the same scenario and problem Each question presents a unique solution to the problem, and you must determine whether the solution meets the stated goals. Any of the solutions might solve the problem. It is also possible that none of the solutions solve the problem.
Once you answer a question in this section, you will NOT be able to return to it. As a result, these questions will not appear in the review screen
Note: This question is part of a series of questions that present the same scenario. Each question in the series contains a unique solution. Determine whether the solution meets the stated goals.
Your network contains an Active Directory domain named contoso.com. The domain contains a DNS server named Server1. All client computers run Windows 10. On Server1, you have the following zone configuration

ZoneName	ZoneType	IsAutoCreated	IsDsIntegrated	IsReverseLookupZone	IsSign
-----	-----	-----	-----	-----	-----
_msdcs.contoso.com	Primary	False	True	False	False
adatum.com	Forwarder	False	False	False	
contoso.com	Primary	False	True	False	False
fabrikam.com	Primary	False	False	False	True
TrustAnchors	Primary	False	True	False	False

You have the following subnets defined on Server1.

Name	IPv4Subnet	IPv6Subnet
----	-----	-----
Subnet1	{10.0.0.0/24}	
Subnet2	{10.0.1.0/24}	
Subnet3	{192.168.15.0/24}	
Subnet4	{172.16.1.0/24}	

You need to prevent Server1 from resolving queries from DNS clients located on Subnet4 Server1 must resolve queries from all other DNS clients Solution From the Security setting of each zone on Server1, you modify the permissions Does this meet the goal?

- A. Yes
- B. No

Answer: B

NEW QUESTION 42

In this section, you'll see one or more sets of questions with the same scenario and problem Each question presents a unique solution to the problem, and you must determine whether the solution meets the stated goals. Any of the solutions might solve the problem. It is also possible that none of the solutions solve the problem.
Once you answer a question in this section, you will NOT be able to return to it. As a result, these questions will not appear in the review screen
Note: This question is part of a series of questions that present the same scenario. Each question in the series contains a unique solution. Determine whether the solution meets the stated goals.
Your network contains an Active Directory domain named contoso.com. The domain contains a DNS server named Server1. All client computers run Windows 10. On Server1, you have the following zone configuration

ZoneName	ZoneType	IsAutoCreated	IsDsIntegrated	IsReverseLookupZone	IsSign
-----	-----	-----	-----	-----	-----
_msdcs.contoso.com	Primary	False	True	False	False
adatum.com	Forwarder	False	False	False	
contoso.com	Primary	False	True	False	False
fabrikam.com	Primary	False	False	False	True
TrustAnchors	Primary	False	True	False	False

You have the following subnets defined on Server1.

Name	IPv4Subnet	IPv6Subnet
----	-----	-----
Subnet1	{10.0.0.0/24}	
Subnet2	{10.0.1.0/24}	
Subnet3	{192.168.15.0/24}	
Subnet4	{172.16.1.0/24}	

You need to prevent Server1 from resolving queries from DNS clients located on Subnet4 Server1 must resolve queries from all other DNS clients
Solution From a Group Policy object (GPO) in the domain, you modify the Network List Manager Policies
Does this meet the goal?

- A. Yes
- B. No

Answer: B

NEW QUESTION 46

In this section, you'll see one or more sets of questions with the same scenario and problem Each question presents a unique solution to the problem, and you must determine whether the solution meets the stated goals. Any of the solutions might solve the problem. It is also possible that none of the solutions solve the problem.
Once you answer a question in this section, you will NOT be able to return to it. As a result, these questions will not appear in the review screen
Note: This question is part of a series of questions that present the same scenario. Each question in the series contains a unique solution. Determine whether the solution meets the stated goals.
Your network contains an Active Directory domain named contoso.com. The domain contains a DNS server named Server1. All client computers run Windows 10. On Server1, you have the following zone configuration

ZoneName	ZoneType	IsAutoCreated	IsDsIntegrated	IsReverseLookupZone	IsSign
-----	-----	-----	-----	-----	-----
_msdcs.contoso.com	Primary	False	True	False	False
adatum.com	Forwarder	False	False	False	
contoso.com	Primary	False	True	False	False
fabrikam.com	Primary	False	False	False	True
TrustAnchors	Primary	False	True	False	False

You have the following subnets defined on Server1.

Name	IPv4Subnet	IPv6Subnet
----	-----	-----
Subnet1	{10.0.0.0/24}	
Subnet2	{10.0.1.0/24}	
Subnet3	{192.168.15.0/24}	
Subnet4	{172.16.1.0/24}	

You need to prevent Server1 from resolving queries from DNS clients located on Subnet4 Server1 must resolve queries from all other DNS clients
Solution From Windows PowerShell on Setver1, you run the Add-DnsServerTrustAnchor cmdtel Does this meet the goal?

- A. Yes
- B. No

Answer: A

NEW QUESTION 47

Note: This question is part of a series of questions that present the same scenario. Each question in the series contains a unique solution that might meet the stated goals. Some question sets might have more than one correct solution, while others might not have a correct solution.

After you answer a question in this section, you will NOT be able to return to it. As a result, these questions will not appear in the review screen.

You have two servers that run Windows Server 2016.

You plan to create a Network Load Balancing (NLB) cluster that will contain both servers. You need to configure the network cards on the servers for the planned NLB configuration.

Solution: You configure the network cards to be on the same subnet and to have static IP addresses. You configure the cluster to use multicast.

Does this meet the goal?

- A. Yes
- B. No

Answer: A

Explanation:

References:

<https://technet.microsoft.com/en-us/windows-server-docs/networking/technologies/network-load-balancing>

NEW QUESTION 48

Note: This question is part of a series of questions that present the same scenario. Each question in the series contains a unique solution that might meet the stated goals. Some question sets might have more than one correct solution, while others might not have a correct solution.

After you answer a question in this section, you will NOT be able to return to it. As a result, these questions will not appear in the review screen.

You have two servers that run Windows Server 2016.

You plan to create a Network load Balancing (NLB) cluster that will contain both servers. You need to configure the network cards on the servers for the planned NLB configuration.

Solution: You configure the network cards to be on the same subnet and to have dynamic IP addresses. You configure the cluster to use multicast.

Does this meet the goal?

- A. Yes
- B. No

Answer: B

Explanation:

References:

<https://technet.microsoft.com/en-us/windows-server-docs/networking/technologies/network-load-balancing>

NEW QUESTION 49

You have an Active Director domain named Contoso.com. The domain contains servers named Server 1, Server2 and Server3 that run Windows Server 2016

Server1 and Server2 are nodes in a Hyper V cluster named Cluster1. You add a Hyper V Replica Broker role named Broker 1 to Cluster 1

Server3 is a Hyper-V server. A virtual machine named VM1 runs on Server3.

Live Migration is enabled on all three servers and it is configured to use Kerberos authentication only. You need to ensure that you can perform the migration of VM1 to Server2

What should you do?

- A. Modify the Storage Migration settings on Server3
- B. Modify the Cluster Permissions for Cluster1.
- C. Add the Server3 computer account to the Replicator group on Server1 and Server2.
- D. Modify the Delegation settings for the Server3 computer account.

Answer: D

Explanation:

References:

[https://technet.microsoft.com/en-us/library/jj134199\(v=ws.11\).aspx#BKMK_Step1](https://technet.microsoft.com/en-us/library/jj134199(v=ws.11).aspx#BKMK_Step1)

NEW QUESTION 52

Note This question is part of a series of questions that use the same scenario. For your convenience, the scenario is repeated in each question. Each question presents a different goal and answer choices, but the text of the scenario is exactly the same in each question in this series.

Start of Repeated Scenario:

A company named Contoso, Ltd. has several servers that run Windows Server 2016 Contoso has a Hyper V environment that uses failover clustering and Windows Server Update Services (WSUS). The environment contains several Windows containers and several virtual machines.

The WSUS deployment contains one upstream server that is located on the company's perimeter network and several downstream servers located on the internal network, A firewall separates the upstream server from the downstream servers.

You plan to deploy a human resources application to a new server named HRServer5. HRServer5 contains a FAT32-formatted data volume.

The CIO of Contoso identifies the following requirements for the company's IT department:

- Deploy failover cluster to two new virtual machines.
 - Store all application databases by using Encrypted File System (EFS).
 - Ensure that each Windows container has a dedicated IP address assigned by a DHCP server
 - Produce a report that lists the processor time used by all of the processes on a server named Server 1 for five hour.
- Encrypt all communication between the internal network and the perimeter network, including all WSUS communications.
- Automatically load balance the virtual machines hosted in the Hyper-V cluster when processor utilization exceeds 70 percent.

End of Repeated Scenario.

You need to modify the Hyper V cluster to meet the load balancing requirement for the virtual machine. Which command should you run?

- A. (Get-ClusterParameter) AutoBalaneCrMode=2
- B. (Get-Cluster).AutoBalaneCrMode=2
- C. (Get-ClusterParameter).AutoBalancerLevel=2
- D. (Get-Cluster).AutoBalancerLevel=2

Answer: D

NEW QUESTION 57

DRAG DROP

You have a network that contains several servers that run Windows Server 2016.

You need to use Desired State Configuration (DSC) to configure the servers to meet the following requirements:

- Install the Web Server server role
- Start the World Wide Web Publishing service.

How should you configure the DSC resources? To answer, drag the appropriate values to the correct locations. Each value may be used once, more than once, or not at all. You may need to drag the split bar between panes or scroll to view content.

Values	Answer Area
Name	Value WebServerRole
Service	{
WindowsFeature	Ensure = " Value "
WindowsProcess	Name = "Web-Server"
Present	}
Source	Value WorldWideWebPublishing
Running	{
Stopped	Name = "W3SVC"
	StartupType = "Automatic"
	State = " Value "
	}

- A. Mastered
- B. Not Mastered

Answer: A

Explanation:

Values

Name

Service

WindowsFeature

WindowsProcess

Present

Source

Running

Stopped

Answer Area

WindowsFeature WebServerRole

```
{
    Ensure = "Present"
    Name = "Web-Server"
}
```

Service WorldWideWebPublishing

```
{
    Name = "W3SVC"
    StartupType = "Automatic"
    State = "Running"
}
```

NEW QUESTION 59

You have a server named Server 1 that runs Windows Server 2016.

Server 1 has Internet connectivity. You have a Nano Server image.

You need to download and save a Nano Server package in the Nano Server image. The package is NOT included in the Windows Server 2016 installation media.

Which two cmdlets should you run on Server1.

- A. Set-PackageSource
- B. Install-PackageProvider
- C. Add-AppxProvisionedPackage
- D. Save-NanoServerPackage
- E. Add-WindowsPackage

Answer: BD

NEW QUESTION 64

You have a Hyper-V host named Server1 that runs Windows Server 2016. Server1 contains four virtual machines that are configured as shown in the following table.

Virtual machine name	Configuration
VM1	A shielded virtual machine that runs Windows Server 2012 R2
VM2	A shielded virtual machine that runs Windows Server 2016
VM3	A virtual machine that runs Windows Server 2012 R2 and has Secure Boot enabled
VM4	A virtual machine that runs Windows Server 2016 and has all of its drivers protected by using BitLocker Drive Encryption (BitLocker)

To which machine or machines can you connect by using Virtual Machine Connection from Hyper-V Manager?

- A. VM1, VM2, VM3 and VM4
- B. VM4 only
- C. VM1 and VM2 only
- D. VM3 and VM4 only
- E. VM2 only

Answer: D

NEW QUESTION 65

After you answer a question in this section, you will NOT be able to return to it. As a result, these questions will not appear in the review screen.

You have a server named Server1 that runs Windows Server 2016.

You plan to use Windows Server Backup to back up all of the data on Server1. You create a new volume on Server1. You need to ensure that the new volume can be used as a backup target. The backup target must support incremental backups. Solution: You mount the volume to C:\Backup, and you format the volume by using NTFS. Does this meet the goal?

- A. Yes
- B. No

Answer: A

NEW QUESTION 68

Your network contains an Active Directory domain. The domain contains a new file server named Server1 that runs a Server Core installation of Windows Server 2016.

Server1 has an ReFS-formatted volume D: and NTFS-formatted volume E: The volumes do not contain any data.

You install the Data Deduplication role service on Server1.

You need to implement Data Deduplication for volumes on D: and E:.

Solution: From Windows PowerShell, you run Enable-DeDupVolume -Volume D:,E:.. Does this meet the goal?

- A. Yes
- B. No

Answer: B

NEW QUESTION 73

You have a server named Server1 that runs Windows Server 2016.

The disks on Server1 are configured as shown in the following table.

Volume	Type	File System	Capacity
C:	Attached locally	NTFS	150 GB
D:	Attached locally	exFAT	100 GB
E:	Attached locally	NTFS	20 GB
F:	Attached locally	ReFS	1 TB
G:	iSCSI LUN	NTFS	2 TB

Windows Server 2016 is installed in C:\Windows.

On which two volumes can you enable data deduplication? Each correct answer presents a complete solution.

- A. C:
- B. D:
- C. E:
- D. F:
- E. G:

Answer: CE

NEW QUESTION 78

You have a Hyper-V host named Server1 that runs Windows Server 2016. Server1 hosts a virtual machine.

You need to provide VM1 with direct access to a graphics processing unit (GPU) on Server1. What should you do first?

- A. On VM1, install the QUzlity Windows Audio Video Experience (qWave) feature.
- B. Dismount the display adapter on Server1.
- C. In the settings of VM1, add a RemoteFX 3D Video Adapter.
- D. Disable the display adapter device on Server1.

Answer: D

Explanation:

Before the physical device is allowed to be passed through to the VM, the device must be disabled on the host system. The physical device must be accessible/available exclusively to the VM only. References:

Introduction to Windows Server 2016 Hyper-V DiscreteDevice Assignment, page 5 <https://lenovopress.com/lp0088.pdf>

NEW QUESTION 83

DRAG DROP

You install a new Nano Server named Nano1. Nano1 is a member of a workgroup and has an IP address of 192.168.1.10.

You have a server named Server1 that runs Windows Server 2016.

From Server1, you need to establish a Windows PowerShell session to Nano1.

How should you complete the PowerShell script? To answer, drag the appropriate cmdlets to the correct targets. Each cmdlet may be used once, more than once, or not at all. You may need to drag the split bar between panes or scroll to view content.

Cmdlets	Answer Area
Enable-PSRemoting	\$ip = "192.168.1.10"
Enter-PSSession	\$user = "Administrator"
Set-Item	Cmdlet WSMAN:\localhost\Client\TrustedHosts "192.168.1.10"
Set-ItemProperty	Cmdlet -ComputerName \$ip -Credential \$user
Set-LocalUser	

- A. Mastered
 B. Not Mastered

Answer: A

Explanation:

How to access Nano Server

Because Nano Server does not support a local session, it must be accessed remotely. References: [https://msdn.microsoft.com/en-us/library/mt708805\(v=vs.85\).aspx](https://msdn.microsoft.com/en-us/library/mt708805(v=vs.85).aspx)

NEW QUESTION 85

DRAG DROP

You are preparing an image of Windows Server 2016.

The image is missing the driver for a network adapter that is required in your environment. You need to ensure that the image contains the network adapter driver.

Which three cmdlets should you use in sequence? To answer, move the appropriate cmdlets from the list of cmdlets to the answer area and arrange them in the correct order.

Cmdlets	Answer Area
Mount-WindowsImage	1
Add-WindowsDriver	2
Get-WindowsImage	3
Save-WindowsImage	
Add-WindowsFeature	
Dismount-WindowsImage	
Optimize-WindowsImage	

- A. Mastered
 B. Not Mastered

Answer: A

Explanation:

Cmdlets

Mount-WindowsImage

Get-WindowsImage

Save-WindowsImage

Add-WindowsFeature

Answer Area

1

Add-WindowsDriver

2

Optimize-WindowsImage

3

Dismount-WindowsImage

NEW QUESTION 87

Your network contains an Active Directory domain named contoso.com. The domain contains two servers, Server and Server2 that run Windows Server 2016. Each server has an operating system disk and four data disks. All of the disks are locally attached SATA disks. Data disk, is initialized as an MBR disk, and has a single NTFS volume.

You plan to implement Storage Spaces Direct by using the data disks on Server1 and Server2. You need to prepare the data disks for the Storage Spaces Direct implementation.

What should you do?

- A. Convert the data disks to dynamic disks.
- B. Format the volumes on the data disks as exFAT.
- C. Initialize the data disks as GPT disks and create an ReFS volume on each disk.
- D. Delete the volumes from the data disks.

Answer: D

NEW QUESTION 91

You have two Hyper-V hosts named Server1 and Server2 that run Windows Server 2016. Server1 and Server2 are connected to the same network. On Server1 and Server2, you create an external network switch named Switch1. You have the virtual machines shown in the following table.

Virtual machine name	IP address	Subnet mask	Hyper-V host
VM1	192.168.1.16	255.255.255.0	Server1
VM2	192.168.1.32	255.255.255.0	Server2
VM3	192.168.1.48	255.255.255.0	Server2

All three virtual machines are connected to Switch1.

You need to prevent applications in VM3 from being able to capture network traffic from VM1 or VM2. The solution must ensure that VM1 retains network connectivity.

What should you do?

- A. On Server2, configure the VLAN ID setting of Switch1.
- B. On Server2, create an external switch and connect VM3 to the switch.
- C. Modify the subnet mask of VM1 and VM2.
- D. Configure network virtualization for VM1 and VM2.

Answer: D

NEW QUESTION 92

HOTSPOT

Your company has a main office and a branch office. The two offices connect to each other by using a WAN link.

Your network contains an Active Directory forest named contoso.com. The forest contains a domain controller named DC1. All of the domain controllers are located in the main office.

You install a read-only domain controller (RODC) named RODC1 in the branch office.

You create a user account for a new user named User1. You add User1 to the Allowed RODC Password Replication Group. User1 starts work on Monday.

You are notified that the WAN link will be down for maintenance on Monday. You need to ensure that User1 can log on in the branch office site on Monday.

Which command should you run? To answer, select the appropriate options in the answer area.

Answer Area

clonepr
ldifde
repadmin
replmon

/prp
/replicate
/rodcpwdrepl
/syncall

rodcl.fabrikam.com dcl.fabrikam.com "cn=user1,ou=users,dc=fabrikam,DC=com"

- A. Mastered
- B. Not Mastered

Answer: A

Explanation:

References:
[https://technet.microsoft.com/en-us/library/cc742095\(v=ws.11\).aspx](https://technet.microsoft.com/en-us/library/cc742095(v=ws.11).aspx)

NEW QUESTION 94 HOTSPOT

Your network contains an Active Directory forest. The forest contains one domain named contoso.com. The domain contains two domain controllers named DC1 and DC2. DC1 holds all of the operations master roles. During normal network operations, you run the following commands on DC2:

```
Move-ADDirectoryServerOperationMasterRole -Identity "DC2" - OperationMasterRole PDCEmulator
```

```
Move-ADDirectoryServerOperationMasterRole -Identity "DC2" - OperationMasterRole RIDMaster
```

DC1 fails.
You remove DC1 from the network, and then you run the following command:

```
Move-ADDirectoryServerOperationMasterRole -Identity "DC2" - OperationMasterRole SchemaMaster
```

For each of the following statements, select Yes if the statement if true. Otherwise, select No.

Answer Area

Statements	Yes	No
DC2 holds the schema master operations role.	<input type="radio"/>	<input type="radio"/>
DC2 holds the PDC emulator master operations role.	<input type="radio"/>	<input type="radio"/>
Currently, you can add additional domains to the forest.	<input type="radio"/>	<input type="radio"/>

- A. Mastered
- B. Not Mastered

Answer: A

Explanation:

Answer Area

Statements	Yes	No
DC2 holds the schema master operations role.	<input type="radio"/>	<input checked="" type="radio"/>
DC2 holds the PDC emulator master operations role.	<input checked="" type="radio"/>	<input type="radio"/>
Currently, you can add additional domains to the forest.	<input type="radio"/>	<input checked="" type="radio"/>

NEW QUESTION 98

You have a Hyper-V host named Server1 that runs Windows Server 2016. The host has two virtual machines (VMs) named VM1 and VM2. On the Hyper-V host, you create two virtual disks named Disk1 and Disk2. You plan to create a test environment for Storage Spaces Direct. You need to configure the VMs to connect to the virtual disks. What should you use?

- A. An iSCSI target
- B. A virtual SCSI controller
- C. A virtual fibre channel adapter
- D. A virtual IDE controller

Answer: B

Explanation:

References:
<https://blogs.msdn.microsoft.com/clustering/2015/05/27/testing-storage-spaces-direct-using-windows-server-2016-virtual-machines/>

NEW QUESTION 103

DRAG DROP

You have a Hyper-V host named Server1 that runs Windows Server 2016. The installation source files for Windows Server 2016 are located in D:\Source. You need to create a Nano Server image. Which cmdlets should you run? To answer, drag the appropriate cmdlets to the correct targets. Each cmdlet may be used once, more than once, or not at all. You may need to drag the split bat between panes or scroll to view content.

Cmdlets

Add-WindowsImage

Import-Module

Install-Module

New-NanoServerImage

New-WindowsCustomImage

Answer Area

First cmdlet to run:

cmdlet

Second cmdlet to run:

cmdlet

- A. Mastered
- B. Not Mastered

Answer: A

Explanation:

Step 1: Import Module
Import-Module .\NanoServerImageGenerator.psm1 Step 2: New New-NanoServerImage
Create Nano Server Image VHDX
New-NanoServerImage -MediaPath .\Files -BasePath.\Base -TargetPath .\Images\NanoVMGA.vhdx References: <https://technet.microsoft.com/en-us/windows-server-docs/get-started/deploy-nano-server>

NEW QUESTION 104

You deploy two servers that run Windows Server 2016. You install the Failover Clustering feature on both servers. You need to create a workgroup cluster. What should you do?

- A. Configure both of the server to be in a workgroup named Workgrou
- B. Configure the Cluster Service to log on as Network Servic
- C. Run the New-Cluster cmdlet and specify an administrative access point of None.
- D. Create matching local administrative accounts on both of the server
- E. Assign the same primary DNS suffix to both of the server
- F. Run the New-Cluster cmdlet and specify an administrative access point of DNS.
- G. Configure both of the server to be in a workgroup named Workgrou
- H. Configure the Cluster Service to log on as Network Servic
- I. Run the New-Cluster cmdlet and specify an administrative access point of DNS.
- J. Create matching local administrative accounts on both of the server
- K. Assign the same primary DNS suffix to both of the server
- L. Run the New-Cluster cmdlet and specify an administrative access point of None

Answer: B

Explanation:

References:

<https://rlevchenko.com/2015/09/07/workgroup-and-multi-domain-clusters-in-windows-server-2016/>

NEW QUESTION 108

Your manager has asked you to configure the company Windows Server 2016 domain controller. He wants all new computer accounts to be placed in the General OU, when computers join the domain. Which command should you use to accomplish this?

- A. Dsmove
- B. Netdom
- C. Redircmp
- D. None of these

Answer: C

Explanation:

The Redircmp command is used to redirect the default OU of a newly created object such as a user to another OU.

NEW QUESTION 110

With Nano Server some packages are installed directly with their own Windows PowerShell switches (such as -Compute); others you install by passing package names to the -Packages parameter, which you can combine in a comma-separated list. You want to add IIS to your Nano Server, which command should you use?

- A. -Compute
- B. -Packages
- C. -Containers
- D. -Storage

Answer: B

Explanation:

IIS is added by using -Packages Microsoft-NanoServer-IIS-Package.

NEW QUESTION 113

Nano Server is foundational to the modern datacenter and is useful in two core scenarios: As a private cloud infrastructure it's particularly useful for clustered Hyper-V, clustered storage and core networking services scenarios; or as an application platform it's highly optimized for modern distributed and cloud-based apps which leverage containers and micro service architectures.

Is the following statement TRUE or FALSE?

A local interface with UI support is available for offline management of Nano Servers?

- A. TRUE
- B. FALSE

Answer: B

Explanation:

A local interface with UI support is NOT available for Nano servers. You must administer them remotely using PowerShell.

NEW QUESTION 117

The Host Guardian Service supports two different deployments of a Guarded fabric (attestation modes). The statement below describes which mode?

Guarded hosts that can run Shielded VMs are approved based on their identity, measured boot sequence and code integrity policies so that you can ensure that these hosts are only running approved code.

- A. Admin-trusted attestation
- B. TPM-trusted attestation

Answer: B

Explanation:

TPM-trusted attestation offers the strongest possible protections but also requires more configuration steps. Host hardware and firmware must include TPM 2.0 and UEFI 2.3.1 with secure boot enabled.

TPM trusted attestation is the mode Microsoft recommend that you use because it offers stronger assurances but it requires that your Hyper-V hosts have TPM

2.0.

NEW QUESTION 118

You have two Hyper-V hosts named Server1 and Server2 that run Windows Server 2016. Server1 hosts a virtual machine named VM1 that is in a Running state. On Server1, you export VM1 and then you import VM1 on Server2. What is the current state of VM1 on Server2?

- A. Paused
- B. Off
- C. Saved
- D. Running

Answer: C

Explanation:

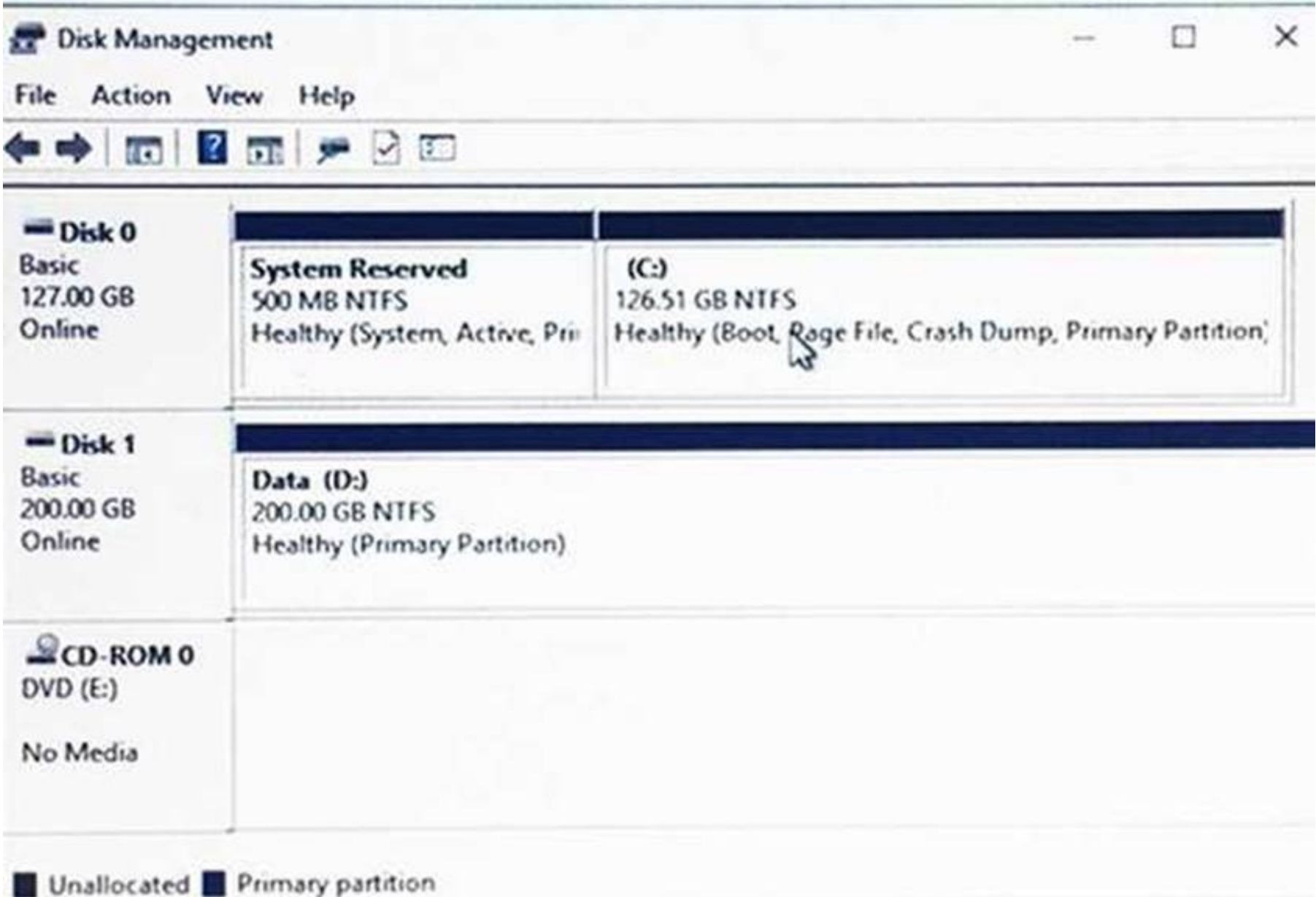
References: <https://blog.workinghardinit.work/2016/06/16/live-export-a-running-virtual-machine-or-a-checkpoint/>

NEW QUESTION 122

DRAG DROP

You have a Hyper-V host named Server1 that runs Windows Server 2016. Server1 hosts a virtual machine named VM1. VM1 runs Windows Server 2016. VM1 uses a VHD for storage.

The disk configuration of VM1 is shown in the exhibit. (Click the Exhibit button.)



You need to increase the size of volume D to 400 GB. Which cmdlets should you run on Server1 and VM1? To answer, drag the appropriate cmdlets to the correct servers. Each cmdlet may be used once, more than once, or not at all. You may need to drag the split bar between panes or scroll to view content. NOTE: Each correct selection is worth one point.

Cmdlets

Resize-Partition

Resize-VHD

Resize-VirtualDisk

Set-VHD

Set-Volume

Answer Area

Cmdlet to run on Server1:

Cmdlet

Cmdlet to run on VM1:

Cmdlet

- A. Mastered
 B. Not Mastered

Answer: A

Explanation:

Cmdlets

Resize-Partition

Resize-VHD

Resize-VirtualDisk

Set-VHD

Set-Volume

Answer Area

Cmdlet to run on Server1:

Resize-VHD

Cmdlet to run on VM1:

Resize-Partition

NEW QUESTION 127

You have two servers that run Windows Server 2016. The servers are configured as shown in the following table.

Server name	Workgroup	DNS suffix
Server1	Workgroup1	None
Server2	Workgroup2	Contoso.com

You need to create a failover cluster that contains both servers.
 Which two commands should you run? Each correct answer presents part of the solution. NOTE: Each correct selection is worth one point.

- A. wmic ComputerSystem Set Workgroup= "Workgroup2"
 B. New-Cluster-Name Cluster1- Node Server1, Server2- AdministrativeAccessPoint DNS
 C. New-Cluster-Name Cluster1- Node Server1, Server2- AdministrativeAccessPoint ActiveDirectoryAndDns
 D. New-Cluster-Name Cluster1- Node Server1, Server2- AdministrativeAccessPoint None
 E. netdom computername Server1/MakePrimary:server1.contoso.com

Answer: AB

NEW QUESTION 132

You have a Hyper-V failover cluster that contains three nodes. Virtual machines are distributed evenly across the cluster nodes.

You need to ensure that if a node loses connectivity from the other nodes, the virtual machines on the node will be transitioned to one of the remaining nodes after one minute.

Which settings should you modify?

- A. QuarantineDuration and QuarantineThreshold
- B. SameSubnetDelay and CrossSubnetDelay
- C. QuorumArbitrationTimeMax and RequestReplyTimeout
- D. ResiliencyPeriod and ResiliencyLevel

Answer: C

Explanation:

References: [https://msdn.microsoft.com/en-us/library/aa369123\(v=vs.85\).aspx](https://msdn.microsoft.com/en-us/library/aa369123(v=vs.85).aspx) [https://msdn.microsoft.com/en-us/library/bb394696\(v=vs.85\).aspx](https://msdn.microsoft.com/en-us/library/bb394696(v=vs.85).aspx)

NEW QUESTION 134

You have a Hyper-V host named Server1 that runs Windows Server 2016. Server1 hosts a virtual machine named VM1 that runs Windows Server 2016. You install the Hyper-V server role on VM1.

You need to ensure that the virtual machines hosted on VM1 can communicate with the virtual machines hosted on Server1.

What should you do?

- A. On Server1, run the Set-VmNetworkAdapterIsolation cmdlet and specify the –MultiTenantStack Off parameter.
- B. On VM1, run the Set-VMNetworkAdapter cmdlet and specify the –MacAddressSpoofing Off parameter.
- C. On VM1, run the Set-VmNetworkAdapterIsolation cmdlet and specify the –MultiTenantStack On parameter.
- D. On Server1, run the Set-VMNetworkAdapter cmdlet and specify the –MacAddressSpoofing On parameter.

Answer: C

Explanation:

References: <https://docs.microsoft.com/en-us/powershell/module/hyper-v/set-vmnetworkadapterisolation?view=win10-ps>

NEW QUESTION 135

You have three Hyper-V hosts named Server1, Server2, and Server3 that run Windows Server 2016. The servers are nodes in a failover cluster.

The failover cluster contains two virtual machines named VM1 and VM2. The roles for VM1 and VM2 have the following configurations.

```
PS C:\> Get-ClusterGroup vm1,vm2 | fl *
```

```
AntiAffinityClassNames      : {}
AutoFailbackType            : 0
ColdStartSetting            : 0
Cluster                     : Cluster1
DefaultOwner                : 1
Description                  :
GroupType                   : VirtualMachine
FailoverPeriod              : 6
FailoverThreshold           : 4294967295
FailbackWindowEnd           : 4294967295
FailbackWindowStart        : 4294967295
IsCoreGroup                 : False
Name                        : vm1
OwnerNode                   : Server1
PersistentState             : 1
PreferredSite               : {}
Priority                    : 0
ReliliencyPeriod            : 429467295
State                       : Online
StatusInformation           : 0
Id                          : d02c87d1-8alc-4ffb-b87d-adf059416f25
```

```
AntiAffinityClassNames      : {}
AutoFailbackType            : 0
ColdStartSetting            : 0
Cluster                     : Cluster1
DefaultOwner                : 1
Description                  :
GroupType                   : VirtualMachine
FailoverPeriod              : 6
FailoverThreshold           : 4294967295
FailbackWindowEnd           : 4294967295
FailbackWindowStart        : 4294967295
IsCoreGroup                 : False
Name                        : vm2
OwnerNode                   : Server1
PersistentState             : 1
PreferredSite               : {}
Priority                    : 3000
ResiliencyPeriod            : 4294967295
State                       : Online
StatusInformation           : 0
Id                          : ab38e657-bfcf-463d-a88b-d4e99aff4ef1
```

All of the nodes in the failover cluster have sufficient resources to run VM1 and VM2 concurrently. VM1 and VM2 fail over to Server3. What is the state of each virtual machine after the failover?

- A. Both VM1 and VM2 are stopped.
- B. Both VM1 and VM2 are running.
- C. VM1 is stopped and VM2 is running.
- D. VM1 is stopped and VM2 is paused.

Answer: C

Explanation:

References:

[https://msdn.microsoft.com/en-us/library/jj151956\(v=vs.85\).aspx](https://msdn.microsoft.com/en-us/library/jj151956(v=vs.85).aspx)

NEW QUESTION 137

You have two servers named Server1 and Server2 that run Windows Server 2016. Server1 contains a volume named Volume1. You implement a Storage Replica that replicates the contents of Volume1 from Server1 to Server2. Server1 fails. From Server2, you need to ensure that you can access the contents of Volume1. What should you run?

- A. Update-StoragePool
- B. Set-SRPartnership
- C. vssadmin revert shadow
- D. Clear-FileStorageTier

Answer: B

Explanation:

References:

<https://docs.microsoft.com/en-us/windows-server/storage/storage-replica/server-to-server-storage-replication>

NEW QUESTION 139

You have a Windows container host named Server1.
On Server1, you create a container named Container1.
You need to mount C:\ContainerFiles from Server1 to Container1. What should you run?

- A. dockerd --storage-opt dm.mountopt=ContainerFiles
- B. docker run -it -v c:\ContainerFiles Container1
- C. dockerd --storage-opt dm.datadev=/c/ContainerFiles
- D. docker run -it -vc:\ContainerFiles:c:\ContainerFiles Container1

Answer: D

NEW QUESTION 140

Note: This question is part of a series of questions that present the same scenario. Each question in the series contains a unique solution that might meet the stated goals. Some question sets might have more than one correct solution, while others might not have a correct solution.

After you answer a question in this section, you will NOT be able to return to it. As a result, these questions will not appear in the review screen.

You network contains an Active Directory domain named contoso.com.

You need to create a Nano Server image named Nano1 that will be used as a virtualization host. The Windows Server 2016 source files are located in drive D.

Solution: You run the following cmdlet.

New-NanoServerImage –Edition Datacenter –DeploymentType Host –Package Microsoft- NanoServer-Compute-Package -MediaPath ‘D:\’ –TargetPath

C:\Nano1\Nano1.wim –ComputerName Nano1 –DomainName Contoso.com

Does this meet the goal?

- A. Yes
- B. No

Answer: A

NEW QUESTION 141

Note: This question is part of a series of questions that present the same scenario. Each question in the series contains a unique solution that might meet the stated goals. Some question sets might have more than one correct solution, while others might not have a correct solution.

After you answer a question in this section, you will NOT be able to return to it. As a result, these questions will not appear in the review screen.

You have a server named Server1 that runs Windows Server 2016.

You plan to use Windows Server Backup to back up all of the data on Server1. You create a new volume on Server1.

You need to ensure that the new volume can be used as a backup target. The backup target must support incremental backups.

Solution: You mount the volume to C:\backup. and you format the volume by using FAT32. Does this meet the goal?

- A. Yes
- B. No

Answer: B

NEW QUESTION 143

You have Nano Server image named Disk1.vhdx.

You mount Disk1.vhdx.

You need to add a folder that contains several files to the image. Which tool or cmdlet you should use?

- A. File Explore.
- B. Add-Windows Image
- C. Nano Server Image Builder
- D. Server Manager

Answer: D

NEW QUESTION 147

Note This question is part of a series of questions that use the same scenario. For your convenience, the scenario is repeated in each question. Each question presents a different goal and answer choices, but the text of the scenario is exactly the same in each question in this series.

Start of Repeated Scenario:

A company named Contoso, Ltd. has several servers that run Windows Server 2016. Contoso has a Hyper V environment that uses failover clustering and Windows Server Update Services (WSUS). The environment contains several Windows containers and several virtual machines.

The WSUS deployment contains one upstream server that is located on the company's perimeter network and several downstream servers located on the internal network. A firewall separates the upstream server from the downstream servers.

You plan to deploy a human resources application to a new server named HRServer5. HRServer5 contains a FAT32-formatted data volume. The CIO of Contoso identifies the following requirements for the company's IT department:

- Deploy failover cluster to two new virtual machines.
 - Store all application databases by using Encrypted File System (EFS).
 - Ensure that each Windows container has a dedicated IP address assigned by a DHCP server
 - Produce a report that lists the processor time used by all of the processes on a server named Server 1 for five hour.
- Encrypt all communication between the internal network and the perimeter network, including all WSUS communications.
- Automatically load balance the virtual machines hosted in the Hyper-V cluster when processor utilization exceeds 70 percent.

End of Repeated Scenario.

You need to modify the Hyper V cluster to meet the load balancing requirement for the virtual machine. Which command should you run?

- A. Create a firewall rule 10 allow TCP port 443.
- B. Create a firewall rule to allow TCP port 8531.
- C. Require- SSI Oil the Client WebService virtual directory.
- D. Require SSI on the Inventory virtual directory.

Answer: D

NEW QUESTION 148

Note This question is part of a series of questions that use the same scenario. For your convenience, the scenario is repeated in each question. Each question presents a different goal and answer choices, but the text of the scenario is exactly the same in each question in this series.

Start of Repeated Scenario:

A company named Contoso, Ltd. has several servers that run Windows Server 2016 Contoso has a Hyper V environment that uses failover clustering and Windows Server Update Services (WSUS). The environment contains several Windows containers and several virtual machines.

The WSUS deployment contains one upstream server that is located on the company's perimeter network and several downstream servers located on the internal network, A firewall separates the upstream server from the downstream servers.

You plan to deploy a human resources application to a new server named HRServer5. HRServer5 contains a FAT32-formatted data volume.

The CIO of Contoso identifies the following requirements for the company's IT department:

- Deploy failover cluster to two new virtual machines.
 - Store all application databases by using Encrypted File System (EFS).
 - Ensure that each Windows container has a dedicated IP address assigned by a DHCP server
 - Produce a report that lists the processor time used by all of the processes on a server named Server 1 for five hour.
- Encrypt all communication between the internal network and the perimeter network, including all WSUS communications.
- Automatically load balance the virtual machines hosted in the Hyper-V cluster when processor utilization exceeds 70 percent.

End of Repeated Scenario.

You need to modify the Hyper V cluster to meet the load balancing requirement for the virtual machine. Which command should you run?

- A. network address translation (NAT)
- B. I2bridge
- C. I2tunnel
- D. transparent

Answer: A

NEW QUESTION 149

Note: This question is part of a series questions that present the same scenario, Each question in the series contains a unique solution that might meet the stated goals. Some question sets might have more than one correct solution, white others might not have a correct solution.

After you answer a question in this section, you will NOT be able to return to it. As a result, these questions will not appear in the review screen.

You have a server named Server I that runs Windows Server 2016. Server I is a Docker Host.

You are creating a Docker file lo build 3 Docker image.

You need to add a file named File1.txt from Server to, C:\folder1\ in the Docker image.

What are two possible commands that you can use to achieve the goal/ Each correct answer presents a complete solution.

NOTE: Each correct selection is worth one point.

- A. COPY file1.txt c:/folder1/
- B. copy-item file1.txt folder1\file1.txt
- C. ROBOCOPY file.txt \folder1\
- D. XCOPY file1.txt c:\folder1\
- E. ADD file1.txt /folder1/

Answer: AE

NEW QUESTION 152

Your network contains three Hyper-V hosts. You add all of the hosts to a cluster.

You need to create highly available storage spaces that connect to directly attached storage on the hosts.

Which cmdlet should you use?

- A. Enable-CluslerStorageSpacesDirct
- B. Update-CluslerVirtualMachineConfiguration
- C. Add-CluslerDisk
- D. Set-Storage Pool

Answer: A

NEW QUESTION 154

You have a server named Server1 that is an iSCSI target. You have a server named Server2 that runs

Windows Server 2016. Server2 has an iSCSI disk named Disk1 that is hosted on Server1. Disk1 contains one volume that is assigned a drive letter of E.

You need to increase the size of Disk1. What should you do?

- A. Run the Resize-IscsiVirtualDisk cmdlet and specify the -ComputerName Server2 parameter.
- B. Run the Resize-IscsiVirtualDisk cmdlet and specify the -ComputerName Server1 parameter.
- C. Run the Resize-Partition cmdlet and specify the -ComputerName Server1 parameter.
- D. Run the Resize- Partition cmdlet and specify the -ComputerName Server2 parameter.

Answer: B

Explanation:

The Resize-IscsiVirtualDisk cmdlet resizes a virtual disk either by expanding or compacting an existing virtual disk.

The -ComputerName parameter specifies the computer name, or IP address, of the remote computer, if this cmdlet is run on a remote computer. If you do not specify a value for this parameter, the cmdlet uses the local computer.

NEW QUESTION 157

You have a Hyper-V host named Server1 that runs Windows Server 2016. Server1 host a virtual machine named VM1. VM1 has the following settings: Nested virtualization is enabled.

Dynamic Memory is disabled. VM1 is currently running.

You need to adjust the amount of memory assigned to VM1 as quickly as possible. What should you do first?

- A. Change the memory buffer setting of VM1.
- B. Pause VM1.
- C. Shut down VM1.
- D. Enable Dynamic Memory for VM1.

Answer: D

NEW QUESTION 159

You have a Hyper-V host named Server1 that runs Windows Server 2016. Server1 has an external virtual switch named Switch1. Server1 hosts a virtual machine named VM1 that runs Windows Server 2016. VM1 has one network adapter. The network adapter connects to Switch1.

You need to limit the maximum network bandwidth available to VM1 to 100 Mbps. The solution must limit the bandwidth for VM1 only.

Which cmdlet should you run?

- A. Set-NetAdapter
- B. Set-VMNetworkAdapter
- C. Set-VM
- D. Set-NetAdapterVmq
- E. Set-NetworkSwitchPortProperty

Answer: B

Explanation:

The Set-VMNetworkAdapterVlan cmdlet configures virtual LAN settings for the traffic through a virtual network adapter.

NEW QUESTION 164

You have a server named Server1 that runs Windows Server 2016.

Server1 has four SCSI disks and a storage pool named Pool1 that contains three disks. You create a virtual disk named Disk 1 that uses a mirrored layout.

You create a partition named Partition1 that uses all of the available space on Disk 1. You need to extend Partition1.

What should you do first?

- A. From Windows PowerShell, run the Resize-Partition cmdlet.
- B. From Disk Management, modify the properties of Partition1.
- C. From the Storage Pools page in Server Manager, extend a virtual disk.
- D. From Disk Management, extend a volume.

Answer: C

Explanation:

References: <https://charbelnemnom.com/2015/03/step-by-step-how-to-extend-and-resize-a-two-way-mirrored-storage-tiered-space-storagespaces-ws2012r2/>

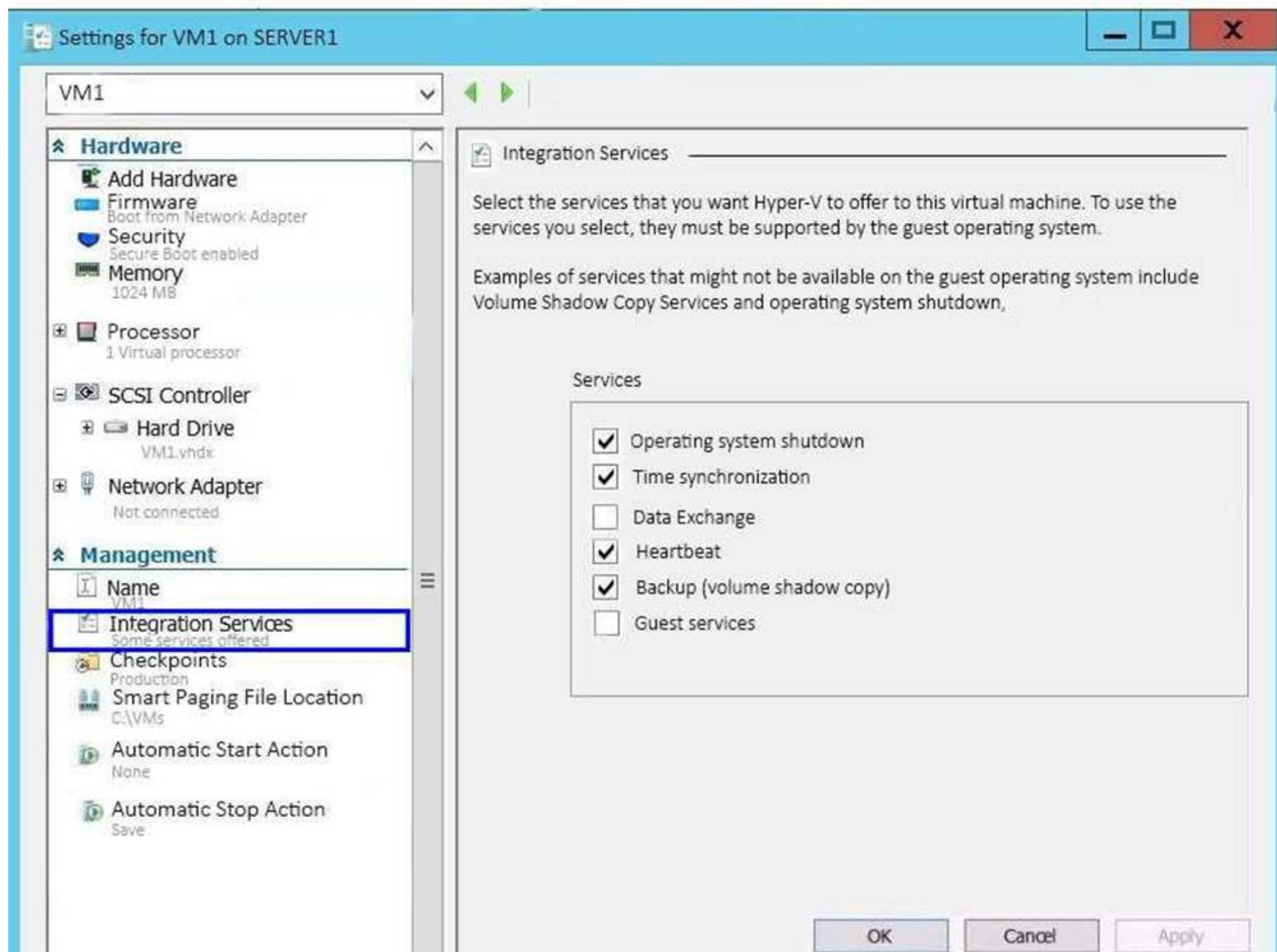
NEW QUESTION 169

Note: This question is part of a series of questions that present the same scenario. Each question in the series contains a unique solution that might meet the stated goals. Some question sets might have more than one correct solution, while others might not have a correct solution.

After you answer a question in this section, you will NOT be able to return to it. As a result, these questions will not appear in the review screen.

You have a Hyper-V host named Server1 that hosts a virtual machine named VM1. Server1 and VM1 run Windows Server 2016.

The settings for VM1 are configured as shown in the exhibit. (Click the Exhibit button.)



You need to ensure that you can use the Copy-VMFile cmdlet on Server1 to copy files from VM1. Solution: You enable the Guest services integration service for VM1.

Does this meet the goal?

- A. Yes
- B. No

Answer: A

Explanation:

References: [https://technet.microsoft.com/en-us/library/dn798297\(v=ws.11\).aspx](https://technet.microsoft.com/en-us/library/dn798297(v=ws.11).aspx)

NEW QUESTION 171

You have a file server named Server1 that runs Windows Server 2016. Object access auditing is configured on Server1. You need to filter the Security event log to show all log entries that relate to a user named User1. What should you do?

- A. Right-click the Security log, and then click Filter Current Log... On the Filter tab, type a value in the User box.
- B. Right-click the Security log, and then click Filter Current Log... On the Filter tab, select a value from the Event sources box.
- C. Right-click the Security log, and then click Create Custom View... On the Filter tab, type a value in the User box.
- D. Right-click the Security log, and then click Filter Current Log... On the XML tab, modify the QueryList entry and set an EventData tag.

Answer: A

Explanation:

Right clicking the event log name and selecting the "Filter Current Log" will display various options for filtering the event log.

These options are:

References: <https://blogs.technet.microsoft.com/rmilne/2014/08/06/quick-tip-event-viewer-filtering/>

NEW QUESTION 172

Note: This question is part of a series of questions that present the same scenario. Each question in the series contains a unique solution that might meet the stated goals. Some question sets might have more than one correct solution, while others might not have a correct solution.

After you answer a question in this section, you will NOT be able to return to it. As a result, these questions will not appear in the review screen.

You network contains an Active Directory forest named contoso.com. The forest contains a child domain named eu.contoso.com.

You plan to implement live migration between two Hyper-V hosts that run Windows Server 2016. The hosts are configured as shown in the following table.

Host name	Configuration
Host1	<ul style="list-style-type: none"> Is a member of the contoso.com domain Uses an Intel Xeon processor released in 2012 Has an external virtual switch named Switch1 Hosts a virtual machine named VM1 that connects to Switch1
Host2	<ul style="list-style-type: none"> Is a member of the eu.contoso.com domain Uses an Intel Xeon processor released in 2016 Has an external virtual switch named Switch1

You need to ensure that you can perform a live migration of VM1 from Host1 to Host2.

Solution: You shut down VM1, configure the processor compatibility settings, and then start VM1. Does meet the goal?

- A. Yes
- B. No

Answer: A

NEW QUESTION 177

Note: This question is part of a series of questions that present the same scenario. Each question in the series contains a unique solution that might meet the stated goals. Some question sets might have more than one correct solution, while others might not have a correct solution.

After you answer a question in this section, you will NOT be able to return to it. As a result, these questions will not appear in the review screen.

You have an Exchange Server 2016 organization.

Some users access the mailbox on their mobile device by using Exchange ActiveSync.

You need to prevent the users from synchronizing more than one month of email or calendar data to their device.

Solution: You deploy an Allow/Block/Quarantine policy. Does this meet the goal?

- A. Yes
- B. No

Answer: B

NEW QUESTION 181

You have two servers named Server1 and Server2 that run Windows Server 2016.

You plan to implement Storage Replica to replicate the contents of volumes on Server1 to Server2. You need to ensure that the replication traffic between the servers is limited to a maximum of 100

Mbps.

Which cmdlet should you run?

- A. New-NetQosPolicy
- B. Set-NetworkController
- C. New-NetTransportFilter
- D. New-StorageQosPolicy
- E. Set-NetTCPSetting
- F. Set-NetUDPSetting

Answer: A

Explanation:

References: <https://docs.microsoft.com/en-us/powershell/module/netqos/new-netqospolicy?view=win10-ps>

NEW QUESTION 184

Note: This question is part of a series of questions that use the same scenario. For your convenience, the scenario is repeated in each question. Each question presents a different goal and answer choices, but the text of the scenario is exactly the same in each question in this series.

A company named Contoso, Ltd. has several servers that run Windows Server 2016. Contoso has a Hyper-V environment that uses failover clustering and Windows Server Update Services (WSUS). The environment contains several Windows containers and several virtual machines.

The WSUS deployment contains one upstream server that is located on the company's perimeter network and several downstream servers located on the internal network. A firewall separates the upstream server from the downstream servers.

You plan to deploy a human resources application to a new server named HRServer5. HRServer5 contains a FAT32-formatted data volume.

The CIO of Contoso identifies the following requirements for the company's IT department:

Which two actions should you perform to meet the encryption requirement for WSUS? Each correct answer presents part of the solution.

- A. Require SSL on the Inventory virtual directory.
- B. Require SSL on the ClientWebService virtual directory.
- C. Create a firewall rule to allow TCP port 443.
- D. Create a firewall rule to allow TCP port 8531.

Answer: BC

Explanation:

References:

<https://technet.microsoft.com/en-us/library/bb633246.aspx> https://en.wikipedia.org/wiki/List_of_TCP_and_UDP_port_numbers

NEW QUESTION 186

Note: This question is part of a series of questions that use the same scenario. For your convenience, the scenario is repeated in each question. Each question presents a different goal and answer choices, but the text of the scenario is exactly the same in each question in this series.

A company named Contoso, Ltd. has several servers that run Windows Server 2016. Contoso has a Hyper-V environment that uses failover clustering and Windows Server Update Services (WSUS). The environment contains several Windows containers and several virtual machines.

The WSUS deployment contains one upstream server that is located on the company's perimeter network and several downstream servers located on the internal network. A firewall separates the upstream server from the downstream servers.

You plan to deploy a human resources application to a new server named HRServer5. HRServer5 contains a FAT32-formatted data volume.

The CIO of Contoso identifies the following requirements for the company's IT department:

Deploy a failover cluster to two new virtual machines.

Store all application databases by using Encrypted File System (EFS).

Ensure that each Windows container has a dedicated IP address assigned by a DHCP server.

Produce a report that lists the processor time used by all of the processes on a server named Server1 for five hours.

Encrypt all communication between the internal network and the perimeter network, including all WSUS communications.

Automatically load balance the virtual machines hosted in the Hyper-V cluster when processor utilization exceeds 70 percent.

Which networking mode should you configure for the Windows containers?

- A. 12tunnel
- B. 12bridge
- C. network address translation (NAT)
- D. transparent

Answer: C

Explanation:

References: <https://blogs.technet.microsoft.com/virtualization/2016/05/05/windows-container-networking/>

NEW QUESTION 187

You have a server named Server1 that runs Windows Server 2016.

The server has an application named App1. App1 writes entries to the Application event log when errors are encountered. The events have IDs of either 111 or 112.

You need to restart the service whenever either of these events is logged. What should you do?

- A. From Windows PowerShell, run the Get-SMSEvent cmdlet and pipe the output to the Start-NetEventSession cmdlet.
- B. From Event Viewer, create a subscription that has a filter for the event IDs.
- C. From Event Viewer, use the Create Basic Task Wizard for each event ID.
- D. From Windows PowerShell, run the Get-Event cmdlet and pipe the output to the Start-NetEventSession cmdlet.

Answer: C

NEW QUESTION 188

You have a Network Load Balancing (NLB) cluster that contains two nodes named Server1 and Server2. The nodes run Windows Server 2016.

The NLB cluster has the following configuration.

ClusterName	:						
IPAddress	:	172.16.4.1					
Name	:						
ClusterIPAddress	:	172.16.4.1					
ClusterNetworkMask	:	255.255.0.0					
ClusterMacAddress	:	02-bf-ac-10-04-01					
OperationMode	:	UNICAST					
BdaReverseHash	:	False					
BdaTeamActive	:	False					
BdaTeamId	:						
BdaTeamMaster	:	False					

IPAddress	State	Start	End	Protocol	Mode	Affinity	Timeout
-----	-----	-----	----	-----	----	-----	-----
All	Enabled	0	65535	Both	Multiple	Single	0

You deploy the Web Server (IIS) server role identically to both servers.

You need to configure NLB to load balance requests between the web servers. HTTP requests must be stateless. HTTPS requests must be stateful.

What should you do? Each correct answer presents part of the solution.

- A. Modify the Cluster operation mode.
- B. Suspend the cluster.
- C. Drainstop the cluster.
- D. Add a new port rule.
- E. Edit the existing port rule.

Answer: CD

Explanation:

References:

<https://www.ntweekly.com/2017/09/04/failover-nlb-cluster-host-member/> <https://docs.microsoft.com/en-us/windows-server/networking/technologies/network-load-balancing>

NEW QUESTION 189

.....

THANKS FOR TRYING THE DEMO OF OUR PRODUCT

Visit Our Site to Purchase the Full Set of Actual 70-740 Exam Questions With Answers.

We Also Provide Practice Exam Software That Simulates Real Exam Environment And Has Many Self-Assessment Features. Order the 70-740 Product From:

<https://www.2passeasy.com/dumps/70-740/>

Money Back Guarantee

70-740 Practice Exam Features:

- * 70-740 Questions and Answers Updated Frequently
- * 70-740 Practice Questions Verified by Expert Senior Certified Staff
- * 70-740 Most Realistic Questions that Guarantee you a Pass on Your FirstTry
- * 70-740 Practice Test Questions in Multiple Choice Formats and Updatesfor 1 Year