

Exam Questions 98-361

Microsoft MTA Software Development Fundamentals

<https://www.2passeasy.com/dumps/98-361/>



NEW QUESTION 1

- (Topic 1)

This question requires that you evaluate the underlined text to determine if it is correct.

The duplication of code so that modifications can happen in parallel is known as separating.

Select the correct answer if the underlined text does not make the statement correct. Select "No change is needed" if the underlined text makes the statement correct.

- A. No change is needed
- B. branching
- C. merging
- D. splitting

Answer: B

Explanation:

When you develop applications in a team-based environment, you might need to access multiple versions of your application at the same time. If you copy one or more areas of your code into a separate branch, you can update one copy while you preserve the original version, or you can update both branches to meet different needs. Depending on your development goals, you can later merge the changes from multiple branches to create a single version that reflects all changes.

NEW QUESTION 2

- (Topic 1)

You are writing a Web application that processes room reservation requests. You need to verify that the room that a guest has selected is not already reserved by another guest.

Which type of programming should you use to determine whether the room is still available when the request is made?

- A. client-side
- B. server-side
- C. multithreaded
- D. batch processing

Answer: B

Explanation:

For room availability we need to check a database located on a server.

NEW QUESTION 3

- (Topic 1)

Which type of application has the following characteristics when it is installed?

? Runs continuously in the background by default when the startup type is set to automatic

? Presents no user interface

- A. Windows Service
- B. Windows Forms
- C. Console-based
- D. Batch file

Answer: A

Explanation:

A Windows service runs in the background and has no interface.

NEW QUESTION 4

- (Topic 1)

You are creating a routine that will perform calculations by using a repetition structure. You need to ensure that the entire loop executes at least once.

Which looping structure should you use?

- A. For
- B. While
- C. Do„While
- D. Fo
- E. „Each

Answer: :C

Explanation:

In a Do..While loop the test is at the end of the structure, so it will be executed at least once.

NEW QUESTION 5

- (Topic 1)

You are developing a webpage that enables students to manage races.

The webpage will display two lists: past races and upcoming races. The page also contains a sidebar with contact information and a panel with social media settings that can be edited. Race results can be shared on social media.

How many components will be on the webpage?

- A. 2
- B. 3

- C. 4
- D. 5

Answer: C

NEW QUESTION 6

- (Topic 1)

You create an object of type ANumber. The class is defined as follows.

```
public Class ANumber
{
    private int _number = 7;

    public ANumber()
    {
    }

    public ANumber(int number)
    {
        _number = number;
    }
}
```

The code is executed as follows.

```
ANumber mynumber = new ANumber(3);
```

What is the value of _number after the code is executed?

- A. Null
- B. 3
- C. 7

Answer: C

NEW QUESTION 7

- (Topic 1)

You have a class named Truck that inherits from a base class named Vehicle. The Vehicle class includes a protected method named brake (). How should you call the Truck class implementation of the brake () method?

- A. Vehicl
- B. brake ();
- C. Thi
- D. brake ();
- E. MyBas
- F. brake();
- G. Truc
- H. brake ();

Answer: C

Explanation:

The MyBase keyword behaves like an object variable referring to the base class of the current instance of a class. MyBase is commonly used to access base class members that are overridden or shadowed in a derived class.

NEW QUESTION 8

- (Topic 1)

Which of the following must exist to inherit attributes from a particular class?

- A. Public properties
- B. A has-a relationship
- C. An is-a relationship
- D. Static members

Answer: :A

Explanation:

There must be some public properties that can be inherited.

NEW QUESTION 9

- (Topic 1)

Simulating the final design of an application in order to ensure that the development is progressing as expected is referred to as:

- A. Analyzing requirements

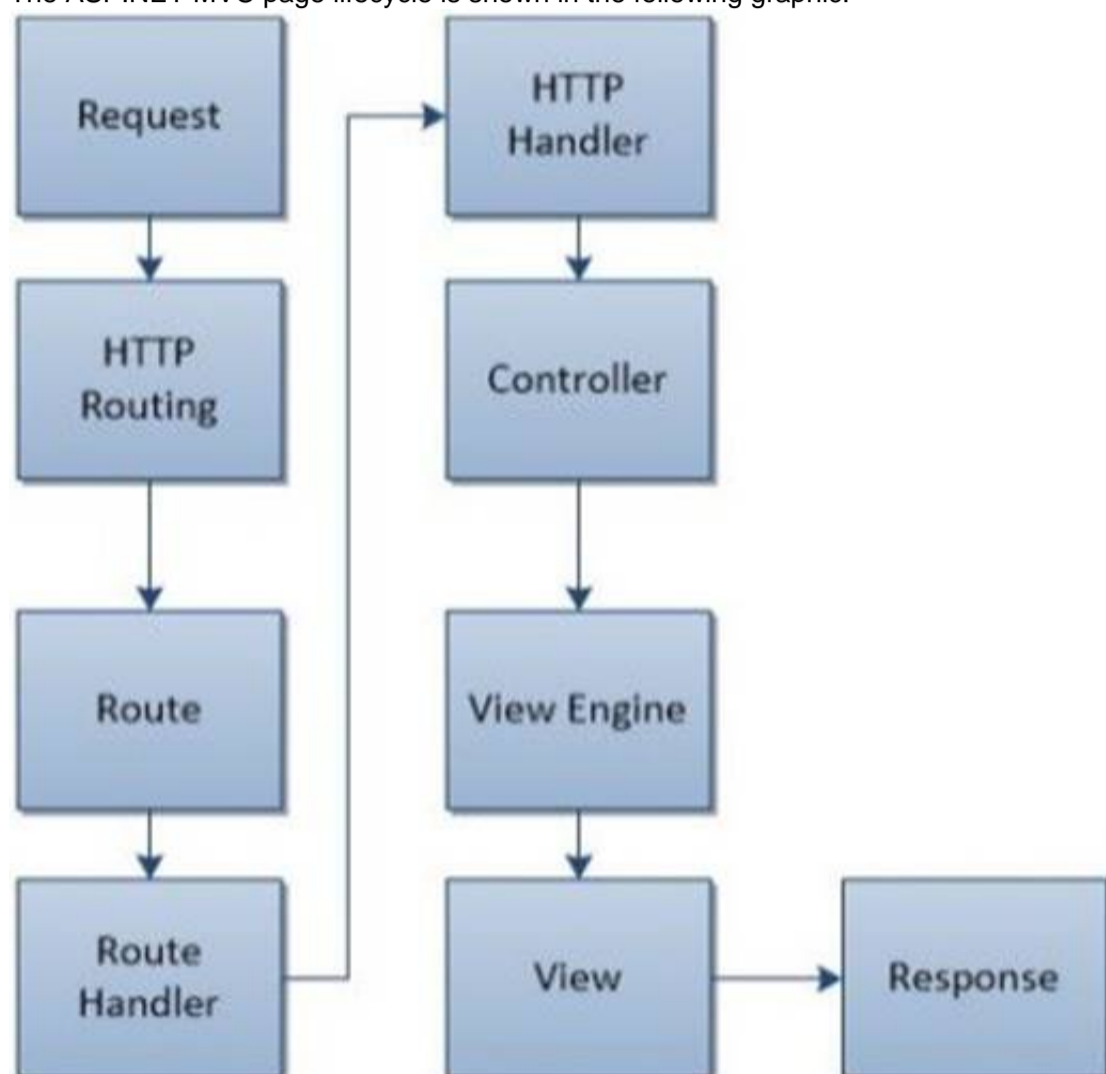
- B. Prototyping
- C. Software testing
- D. Flowcharting

Answer: C

NEW QUESTION 10

HOTSPOT - (Topic 1)

The ASP.NET MVC page lifecycle is shown in the following graphic:



Use the drop-down menus to select the answer choice that completes each statement Each correct selection is worth one point.

Answer Area

The [answer choice] event determines which action method is needed and then calls that method.

The URL pattern is matched during the [answer choice] event.

Answer Area

The [answer choice] event determines which action method is needed and then calls that method.

View
Route
Controller
HTTP Handler

The URL pattern is matched during the [answer choice] event.

View
Route
Controller
HTTP Handler


- A. Mastered
- B. Not Mastered

Answer: A

Explanation:

Answer Area

The **[answer choice]** event determines which action method is needed and then calls that method.



A screenshot of a dropdown menu with a blue arrow icon at the top right. The menu is open, showing four options: 'View', 'Route', 'Controller', and 'HTTP Handler'. The 'Controller' option is highlighted with a green rectangular box.

The URL pattern is matched during the **[answer choice]** event.



A screenshot of a dropdown menu with a blue arrow icon at the top right. The menu is open, showing four options: 'View', 'Route', 'Controller', and 'HTTP Handler'. The 'Route' option is highlighted with a green rectangular box.

NEW QUESTION 10

- (Topic 1)

You have a SQL Server database named MyDB that uses SQL Server Authentication. Which connection string should you use to connect to MyDB?

- A. Data Source=MyDB; UserID=username; Password=P@sswOrd; Initial Catalog=Sales
- B. Data Source=MyDB; Integrated Security=SSPI; Initial Catalog=Sales
- C. Data Source=MyDB; Integrated Security=True; Initial Catalog=Sales
- D. Data Source=MyDB; Trusted_Connection=True; MultipleActiveResultSets=True; Initial Catalog=Sales

Answer: A

Explanation:

Integrated Security Integrated Security is by default set to false.

When false, User ID and Password are specified in the connection.

Incorrect:

not C: Windows Authentication (Integrated Security = true) remains the most secure way to log in to a SQL Server database.

NEW QUESTION 14

- (Topic 1)

How should you configure an application to consume a Web service?

- A. Add the Web service to the development computer.
- B. Add a reference to the Web service in the application.
- C. Add a reference to the application in the Web service.
- D. Add the Web service code to the application.

Answer: B

Explanation:

Start by adding a Service Reference to the project. Right-click the ConsoleApplication1 project and choose ??Add Service Reference??:

NEW QUESTION 18

- (Topic 1)

You are developing an application that tracks tennis matches. A match is represented by the following class:

```
public class Match
{
    public Match()
    {
        Location = "unknown";
    }

    public string Location { get; set; }
    public DateTime? MatchDate { get; set; }
}
```

A match is created by using the following code:

```
var match = new Match
{
    Location = "north region",
    MatchDate = new DateTime(2013, 4, 14),
};
```

How many times is the Location property on the newly created Match class assigned?

- A. 1
- B. 2
- C. 3

Answer: C

NEW QUESTION 19

- (Topic 1)
You execute the following code.

```
bool beakerFull = true;
bool flameOn = false;
int iResult;

switch (beakerFull)
{
    case true:
        switch (flameOn)
        {
            case true:
                iResult = 1;
                break;
            case false:
                iResult = 2;
                break;
        }
        break;
    case false:
        switch (flameOn)
        {
            case false:
                iResult = 3;
                break;
            case true:
                iResult = 4;
                break;
        }
        break;
}
```

What will the variable result be?

- A. 1
- B. 2
- C. 3
- D. 4

Answer: B

NEW QUESTION 23

HOTSPOT - (Topic 1)

You are creating a Windows Store application that uses the following gesture:



Use the drop-down menus to select the answer choice that completes each statement. Each correct selection is worth one point.

Answer Area

The gesture shown in the graphic is called [answer choice].

▼

The surface displayed after the gesture has been completed is the [answer choice].

▼

Answer Area

The gesture shown in the graphic is called [answer choice].

▼

moving

pushing

sliding

swiping

The surface displayed after the gesture has been completed is the [answer choice].

▼

app bar

canvas

charms

context menu

- A. Mastered
- B. Not Mastered

Answer: A

Explanation:

Answer Area

The gesture shown in the graphic is called [answer choice].

The surface displayed after the gesture has been completed is the [answer choice].



NEW QUESTION 27

- (Topic 1)

What does the Console.Error property do within a console-based application?

- A. sets the standard error input stream
- B. gets the standard error output stream
- C. gets the standard error input stream
- D. sets the standard error output stream

Answer: B

Explanation:

The Console.Error property gets the standard error output stream.

NEW QUESTION 30

- (Topic 1)

Your database administrators will not allow you to write SQL code in your application. How should you retrieve data in your application?

- A. Script a SELECT statement to a file.
- B. Query a database view.
- C. Call a stored procedure.
- D. Reference an index in the database.

Answer: C

Explanation:

The SQL will only be inside the stored procedure.

NEW QUESTION 33

- (Topic 1)

In this XHTML code sample, what will cause an error?

```
<!DOCTYPE html PUBLIC "-//W3C//DTD XHTML 1.0 Strict//EN" "http://www.w3.org/TR/xhtml1/DTD/xhtml1-strict.dtd">
<html xmlns="http://www.w3.org/1999/xhtml" lang="en" xml:lang="en">
  <head>
    <title>The Title</title>
  </head>
  <body>
    <h1>This is a Heading.</h1>
    <p>This is a paragraph</p><br>
  </body>
</html>
```

- A. All tags are not in uppercase.
- B. The body tag is missing a background attribute.
- C. The line break tag is incorrectly formatted.
- D. The HTML tags do not read XHTML.

Answer: C

Explanation:

In XHTML, the
 tag must be properly closed, like this:
.

NEW QUESTION 38

HOTSPOT - (Topic 1)

You are reviewing the following class that is used to manage the results of a 5K race:

```
public class Player
{
    private string _name;
    public const string Key = "player";

    public bool MatchName(string searchTerm)
    {
        return _name.ToLower() == searchTerm;
    }

    public void SetResult(int rank, string name)
    {
        if (_name != null)
            return;

        Ranking = rank;
        _name = name;
    }

    public int Ranking { get; private set; }
}
```

For each of the following statements, select Yes if the statement is true. Otherwise, select No. Each correct selection is worth one point.

Answer Area

Description of Behavior	Yes	No
You can only set the player's ranking once.	<input type="radio"/>	<input type="radio"/>
If you call the MatchName method, the code will throw an exception.	<input type="radio"/>	<input type="radio"/>
You can change Key from "player" to "racer".	<input type="radio"/>	<input type="radio"/>

- A. Mastered
- B. Not Mastered

Answer: A

Explanation:

Answer Area

Description of Behavior	Yes	No
You can only set the player's ranking once.	<input checked="" type="radio"/>	<input type="radio"/>
If you call the MatchName method, the code will throw an exception.	<input checked="" type="radio"/>	<input type="radio"/>
You can change Key from "player" to "racer".	<input type="radio"/>	<input checked="" type="radio"/>

This question requires that you evaluate the underlined text to determine if it is correct.

A piece of text that is 4096 bytes or smaller and is stored on and retrieved from the client computer to maintain state is known as a ViewState.

Select the correct answer if the underlined text does not make the statement correct. Select "No change is needed" if the underlined text makes the statement correct.

- A. No change is needed
- B. cookie
- C. form post
- D. QueryString

Answer: B

Explanation:

A piece of text that is 4096 bytes or smaller and is stored on and retrieved from the client computer to maintain state is known as a Cookie.

NEW QUESTION 44

- (Topic 1)

You are designing a Windows Store application.

You need to design the application so that users can share content by connecting two or more devices by physically tapping the devices together.

Which user experience (UX) guideline for Windows Store applications should you use?

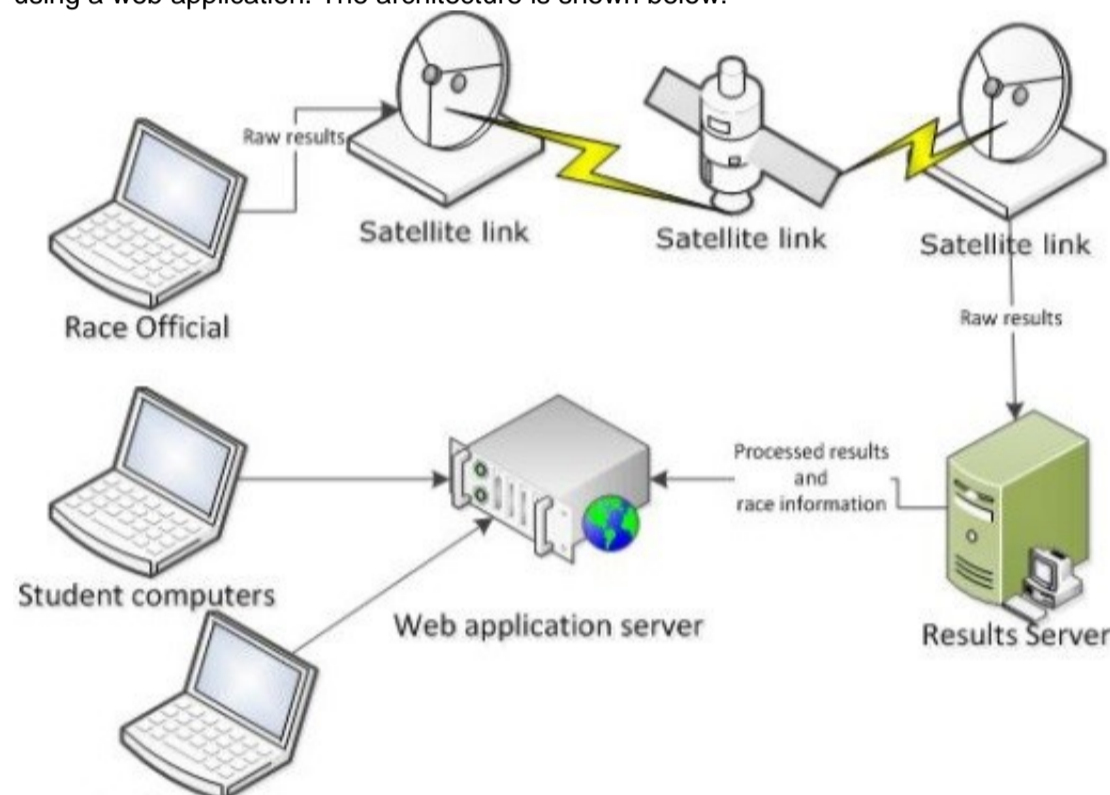
- A. Share and data exchange
- B. location-awareness
- C. device-awareness
- D. proximity gestures

Answer: A

NEW QUESTION 45

HOTSPOT - (Topic 1)

You are reviewing the architecture for a system that allows race officials to enter the results of 5K race results. The results are then made available to students using a web application. The architecture is shown below:



Use the drop-down menus to select the answer choice that answers each question. Each correct selection is worth one point.

Answer Area

To minimize the time between when a race official records the results and when the results are available on the web, which part of the system is critical?

To increase the number of students that can access race results, what element should be added to the system?

Answer Area

To minimize the time between when a race official records the results and when the results are available on the web, which part of the system is critical?

satellite link
 student computer
 race official computer
 web application server

To increase the number of students that can access race results, what element should be added to the system?

satellite link
 race officials
 results servers
 web application servers

- A. Mastered
- B. Not Mastered

Answer: A

Explanation:
Answer Area

To minimize the time between when a race official records the results and when the results are available on the web, which part of the system is critical?

To increase the number of students that can access race results, what element should be added to the system?

satellite link
student computer
race official computer
web application server

satellite link
race officials
results servers
web application servers

NEW QUESTION 47

HOTSPOT - (Topic 1)

For each of the following statements, select Yes if the statement is true. Otherwise, select No. Each correct selection is worth one point.

Answer Area

Description of Behavior	Yes	No
A queue's items are stored in the order they were added.	<input type="radio"/>	<input type="radio"/>
A queue is a first in, first out (FIFO) data structure.	<input type="radio"/>	<input type="radio"/>
A queue has a limited number of items.	<input type="radio"/>	<input type="radio"/>

- A. Mastered
B. Not Mastered

Answer: A

Explanation:

Answer Area

Description of Behavior	Yes	No
A queue's items are stored in the order they were added.	<input checked="" type="radio"/>	<input type="radio"/>
A queue is a first in, first out (FIFO) data structure.	<input checked="" type="radio"/>	<input type="radio"/>
A queue has a limited number of items.	<input type="radio"/>	<input checked="" type="radio"/>

NEW QUESTION 51

- (Topic 1)

You need to ensure the data integrity of a database by resolving insertion, update, and deletion anomalies. Which term is used to describe this process in relational database design?

- A. Isolation
B. Normalization
C. Integration
D. Resolution

Answer: B

Explanation:

Database normalization is the process of organizing the fields and tables of a relational database to minimize redundancy. Normalization usually involves dividing large tables into smaller (and less redundant) tables and defining relationships between them. The objective is to isolate data so that additions, deletions, and modifications of a field can be made in just one table and then propagated through the rest of the database using the defined relationships.

NEW QUESTION 54

- (Topic 1)

You have a stack that contains integer values. The values are pushed onto the stack in the following order: 2,4,6,8.

The following sequence of operations is executed:

Pop Push 3 Pop Push 4

Push 6

Push 7 Pop Pop Pop

What is the value of the top element after these operations are executed?

- A. 2
- B. 3
- C. 6
- D. 7

Answer: B

NEW QUESTION 58

- (Topic 1)

The Dog class and the Cat class inherit from the Animal class. The Animal class includes a breathe() method and a speak() method. If the speak() method is called from an object of type Dog, the result is a bark. If the speak() method is called from an object of type Cat, the result is a meow.

Which term is used to describe this object-oriented concept?

- A. multiple inheritance
- B. polymorphism
- C. data hiding
- D. encapsulation

Answer: A

Explanation:

Polymorphism is often referred to as the third pillar of object-oriented programming, after encapsulation and inheritance. Polymorphism is a Greek word that means "many-shaped" and it has two distinct aspects:

* At run time, objects of a derived class may be treated as objects of a base class in places

* such as method parameters and collections or arrays. When this occurs, the object's declared type is no longer identical to its run-time type.

* Base classes may define and implement virtual methods, and derived classes can override them, which means they provide their own definition and implementation. At run- time, when client code calls the method, the CLR looks up the run-time type of the object, and invokes that override of the virtual method. Thus in your source code you can call a method on a base class, and cause a derived class's version of the method to be executed.

NEW QUESTION 61

- (Topic 1)

This question requires that you evaluate the underlined text to determine if it is correct. To improve performance, a SQL SELECT statement should use indexes.

Select the correct answer if the underlined text does not make the statement correct. Select "No change is needed" if the underlined text makes the statement correct.

- A. No change is needed
- B. joins
- C. grouping
- D. ordering

Answer: A

NEW QUESTION 63

- (Topic 1)

You plan to create an application for your company. The application will run automated routines and write the results to a text-based log file. Little or no user interaction is required.

Security requirements on the host computers prevent you from running applications on startup, and users must be able to see the status easily on the screen. The host computers also have limited memory and monitors that display only two colors. These computers will have no network connectivity.

Which type of application should you use for this environment?

- A. Directx
- B. Windows Service
- C. console-based
- D. Windows Store app

Answer: C

Explanation:

Building Console Applications

Applications in the .NET Framework can use the System.Console class to read characters from and write characters to the console. Data from the console is read from the standard input stream, data to the console is written to the standard output stream, and error data to the console is written to the standard error output stream.

NEW QUESTION 64

- (Topic 1)

Which type of Windows application presents a parent window that contains child windows?

- A. Application programming interface (API)
- B. Single-document interface (SDI)
- C. Multiple-document interface (MDI)

D. Command-line interface (CLI)

Answer: C

Explanation:

A multiple document interface (MDI) is a graphical user interface in which multiple windows reside under a single parent window. Such systems often allow child windows to embed other windows inside them as well, creating complex nested hierarchies. This contrasts with single document interfaces (SDI) where all windows are independent of each other.

NEW QUESTION 66

- (Topic 1)

You execute the following code.

```
for(int i = 0; i <= 100; i++)
{
    if (i % 2 != 0)
    {
        Console.WriteLine("Hello")
    }
}
```

How many times will the word Hello be printed?

- A. 49
- B. 50
- C. 51
- D. 100

Answer: B

Explanation:

The % operator computes the remainder after dividing its first operand by its second. All numeric types have predefined remainder operators. In this case the remainder will be nonzero 50 times (for i with values 1, 3, 5,...,99).

NEW QUESTION 69

- (Topic 1)

You execute the following code.

```
for(int i = 0; i <= 10; i+= 2)
{
    Console.WriteLine("Hello");
}
```

How many times will the word Hello be printed?

- A. 5
- B. 6
- C. 10
- D. 12

Answer: B

NEW QUESTION 70

- (Topic 1)

You are creating an application that presents users with a graphical interface. Users will run this application from remote computers. Some of the remote computers do not have the .NET Framework installed. Users do not have permissions to install software. Which type of application should you choose?

- A. Windows Forms
- B. Windows Service
- C. AS
- D. NET
- E. Console-based

Answer: C

NEW QUESTION 75

HOTSPOT - (Topic 1)

You have a base class named Tree with a friend property named color and a protected property named NumberOfLeaves. In the same project, you also have a class named Person.

For each of the following statements, select Yes if the statement is true. Otherwise, select No. Each correct selection is worth one point.

Answer Area

Description of Behavior	Yes	No
Methods in the Person class can access the color property.	<input type="radio"/>	<input type="radio"/>
Methods in the Person class can access the NumberOfLeaves property.	<input type="radio"/>	<input type="radio"/>
Methods in the Tree class can access all private properties in Person.	<input type="radio"/>	<input type="radio"/>

- A. Mastered
B. Not Mastered

Answer: A

Explanation:

Answer Area

Description of Behavior	Yes	No
Methods in the Person class can access the color property.	<input checked="" type="radio"/>	<input type="radio"/>
Methods in the Person class can access the NumberOfLeaves property.	<input type="radio"/>	<input checked="" type="radio"/>
Methods in the Tree class can access all private properties in Person.	<input type="radio"/>	<input checked="" type="radio"/>

NEW QUESTION 78

- (Topic 1)

When a web service is referenced from a client application in Microsoft Visual Studio, which two items are created? (Choose two.)

- A. a stub
B. a.wsdl file
C. a proxy
D. a .disco file

Answer: BD

Explanation:

A .wsdl file that references the Web service is created, together with supporting files, such as discovery (.disco and .discomap) files, that include information about where the Web service is located.

NEW QUESTION 83

- (Topic 1)

You have a class named Glass that inherits from a base class named Window. The Window class includes a protected method named break(). How should you call the Glass class implementation of the break() method?

- A. Window.break();
B. Glass.break();
C. this.break();
D. base.break();

Answer: A

NEW QUESTION 87

- (Topic 1)

A table named Student has columns named ID, Name, and Age. An index has been created on the ID column. What advantage does this index provide?

- A. It reorders the records alphabetically.
B. It speeds up query execution.

- C. It minimizes storage requirements.
- D. It reorders the records numerically.

Answer: B

Explanation:

Faster to access an index table.

NEW QUESTION 92

- (Topic 1)

You are creating an application for a priority help desk center. The most recent call must be handled first. Which data structure should you use?

- A. queue
- B. hashtable
- C. stack
- D. binary tree

Answer: C

Explanation:

In computer science, a stack is a particular kind of abstract data type or collection in which the principal (or only) operations on the collection are the addition of an entity to the collection, known as push and removal of an entity, known as pop. The relation between the push and pop operations is such that the stack is a Last-In-First-Out (LIFO) data structure. In a LIFO data structure, the last element added to the structure must be the first one to be removed.

NEW QUESTION 96

- (Topic 1)

An application presents the user with a graphical interface. The interface includes buttons that the user clicks to perform tasks. Each time the user clicks a button, a method is called that corresponds to that button. Which term is used to describe this programming model?

- A. Functional
- B. Service oriented
- C. Structured
- D. Event driven

Answer: D

NEW QUESTION 97

- (Topic 1)

This question requires that you evaluate the underlined text to determine if it is correct.

When a base class declares a method as virtual, the method is hidden from implementation by a derived class.

Select the correct answer if the underlined text does not make the statement correct. Select "No change is needed" if the underlined text makes the statement correct.

- A. No change is needed
- B. can be overridden with its own implementation by a derived class
- C. must be overridden in any non-abstract class that directly inherits from that class
- D. cannot be overridden with its own implementation by a derived class

Answer: B

Explanation:

The implementation of a non-virtual method is invariant: The implementation is the same whether the method is invoked on an instance of the class in which it is declared or an instance of a derived class. In contrast, the implementation of a virtual method can be superseded by derived classes. The process of superseding the implementation of an inherited virtual method is known as overriding that method.

NEW QUESTION 98

- (Topic 1)

This question requires that you evaluate the underlined text to determine if it is correct. Arguments are passed to console applications as a Hashtable object. Select the correct answer if the underlined text does not make the statement correct. Select "No change is needed" if the underlined text makes the statement correct.

- A. No change is needed
- B. String Array
- C. StoredProcedureCollection
- D. Dictionary

Answer: B

Explanation:

Arguments are passed to console applications as a String Array object.

NEW QUESTION 99

- (Topic 1)

Which three phrases are advantages of connection pooling? (Choose three.)

- A. reduces time to create a connection
- B. requires no configuration
- C. reduces load on the server
- D. improved scalability
- E. improved performance

Answer: ADE

Explanation:

E: In connection pooling, after a connection is created, it is placed in the pool and it is used over again so that a new connection does not have to be established.
D: Connection pooling often improves application performance, concurrency and scalability.
A: Connection pooling also cuts down on the amount of time a user must wait to establish a connection to the database.

NEW QUESTION 100

- (Topic 1)

Two classes named Circle and Square inherit from the Shape class. Circle and Square both inherit Area from the Shape class, but each computes Area differently. Which term is used to describe this object-oriented concept?

- A. polymorphism
- B. encapsulation
- C. superclassing
- D. overloading

Answer: A

Explanation:

You can use polymorphism to in two basic steps:
Create a class hierarchy in which each specific shape class derives from a common base class.
Use a virtual method to invoke the appropriate method on any derived class through a single call to the base class method.

NEW QUESTION 101

- (Topic 1)

This question requires that you evaluate the underlined text to determine if it is correct.
When creating a site to utilize message queuing, the "IP address" must be configured to MSMQ.
Select the correct answer if the underlined text does not make the statement correct. Select "No change is needed" if the underlined text makes the statement correct.

- A. No change is needed
- B. protocol
- C. host header
- D. port

Answer: B

Explanation:

MSMQ is a messaging protocol that allows applications running on separate servers/processes to communicate in a failsafe manner.

NEW QUESTION 106

- (Topic 1)

This question requires that you evaluate the underlined text to determine if it is correct.
Unit testing is the final set of tests that must be completed before a feature or product can be considered finished.
Select the correct answer if the underlined text does not make the statement correct. Select "No change is needed" if the underlined text makes the statement correct.

- A. No change is needed
- B. User acceptance
- C. System
- D. Integration

Answer: B

Explanation:

User acceptance testing (UAT) is the last phase of the software testing process. During UAT, actual software users test the software to make sure it can handle required tasks in real-world scenarios, according to specifications.
UAT is one of the final and critical software project procedures that must occur before newly developed software is rolled out to the market.
UAT is also known as beta testing, application testing or end user testing.

NEW QUESTION 108

- (Topic 1)

Which service can host an ASP.NET application?

- A. Internet Information Services
- B. Cluster Services
- C. Remote Desktop Services
- D. Web Services

Answer: A

Explanation:

Using Internet Information Services (IIS) Manager, you can create a local Web site for hosting an ASP.NET Web application.

NEW QUESTION 110

- (Topic 1)

This question requires that you evaluate the underlined text to determine if it is correct.

A table whose attributes depend only on the primary key must be at least second normal form.

Select the correct answer if the underlined text does not make the statement correct. Select "No change is needed" if the underlined text makes the statement correct.

- A. No change is needed
- B. first
- C. third
- D. fourth

Answer: A

Explanation:

2nd Normal Form Definition

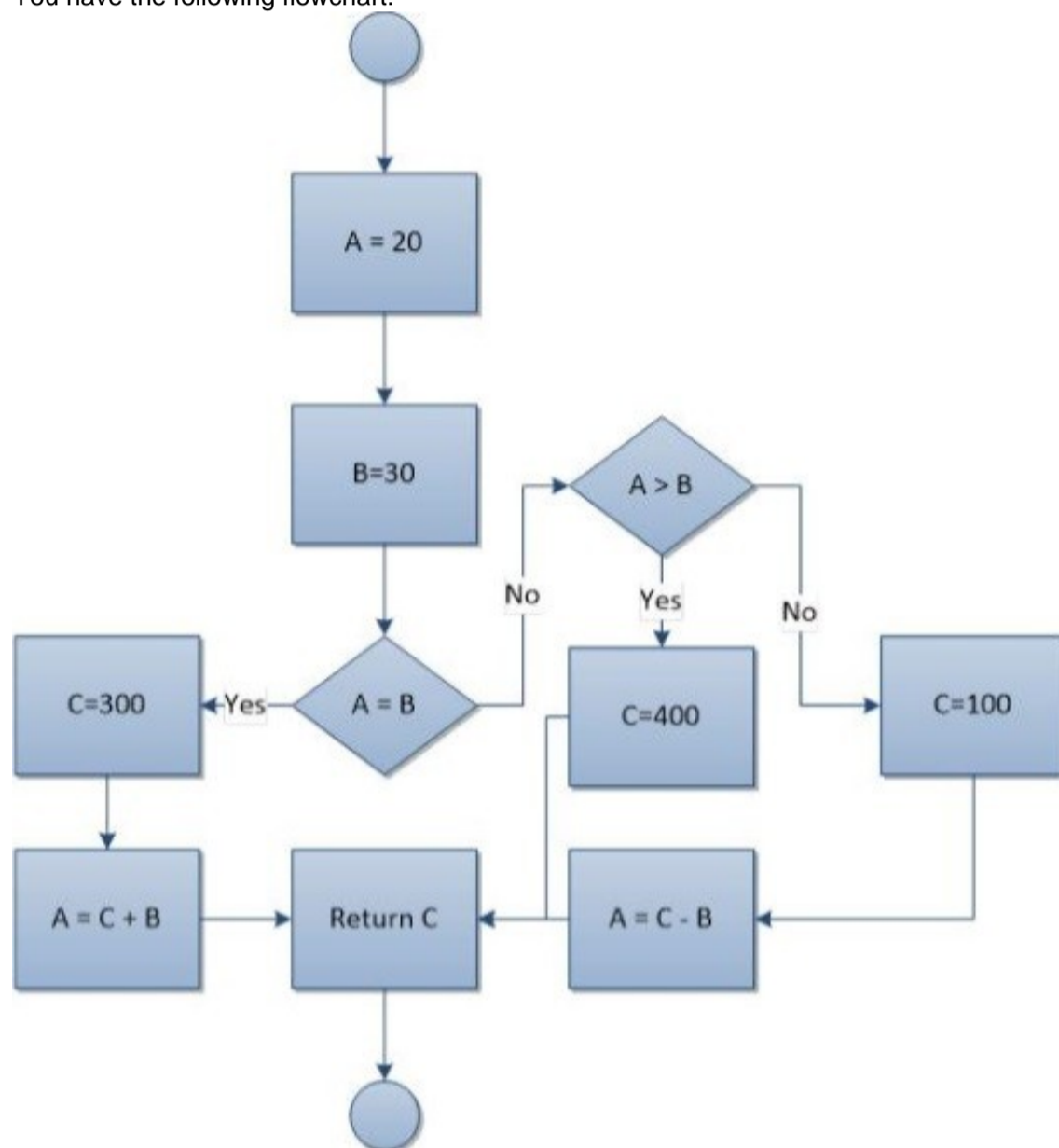
A database is in second normal form if it satisfies the following conditions: It is in first normal form

All non-key attributes are fully functional dependent on the primary key

NEW QUESTION 115

HOTSPOT - (Topic 1)

You have the following flowchart:



Use the drop-down menus to select the answer choice that completes each statement Each correct selection is worth one point.

Answer Area

The value that is returned is [answer choice].

The value of A is [answer choice].

Answer Area

The value that is returned is [answer choice].

▼

20
100
300
400

The value of A is [answer choice].

▼

20
30
70
330

- A. Mastered
B. Not Mastered

Answer: A

Explanation:

Answer Area

The value that is returned is [answer choice].

▼

20
100
300
400

The value of A is [answer choice].

▼

20
30
70
330

NEW QUESTION 117

- (Topic 1)

In which order do the typical phases of the Software Development Life Cycle occur?

- A. Development, design, requirements gathering, and testing
B. Design, requirements gathering, development, and testing
C. Design, development, requirements gathering, and testing
D. Requirements gathering, design, development, and testing

Answer: D

NEW QUESTION 122

- (Topic 1)

Which term is used to describe a class that inherits functionality from an existing class?

- A. Base class
B. Inherited class
C. Derived class
D. Superclass

Answer: C

Explanation:

Classes (but not structs) support the concept of inheritance. A class that derives from another class (the base class) automatically contains all the public, protected, and internal members of the base class except its constructors and destructors.

NEW QUESTION 125

HOTSPOT - (Topic 1)

You are developing a web application.

You need to create the following graphic by using Cascading Style Sheets (CSS):



Use the drop-down menus to select the answer choice that completes each statement. Each correct selection is worth one point.

Answer Area

For the CSS Style **background-image**, you should use the value
[answer choice]

For the CSS Style **border-radius**, you should use the value **[answer choice]**

Answer Area

For the CSS Style **background-image**, you should use the value
[answer choice]

 linear-gradient(to top, green, black);
 linear-gradient(to bottom, green, black);
 radial-gradient(green, black);
 repeating-linear-gradient(green, black);

For the CSS Style **border-radius**, you should use the value **[answer choice]**

 10px;
 10px, 10px, 10px;
 inherit;
 initial;

- A. Mastered
- B. Not Mastered

Answer: A

Explanation:

Answer Area

For the CSS Style **background-image**, you should use the value
[answer choice]

 linear-gradient(to top, green, black);
 linear-gradient(to bottom, green, black);
 radial-gradient(green, black);
 repeating-linear-gradient(green, black);

For the CSS Style **border-radius**, you should use the value **[answer choice]**

 10px;
 10px, 10px, 10px;
 inherit;
 initial;

NEW QUESTION 127

- (Topic 1)

You execute the following code.

```
bool beakerFull = true;
bool flameOn = false;
int iResult = 0;
if (beakerFull)
{
    if (flameOn)
    {
        iResult = 1;
    }
    else
    {
        iResult = 2;
    }
}
else
{
    iResult = 3;
}
```

What will the variable result be?

- A. 1
- B. 2
- C. 3

Answer: C

NEW QUESTION 128

HOTSPOT - (Topic 2)

You are reviewing the following class that is used to manage the results of a 5K race:

```
Public Class Player
    Private _name As String
    Public Const Key As String = "player"

    Private _ranking As Integer
    Public Property Ranking() As Integer
        Get
            Return _ranking
        End Get
        Private Set(value As Integer)
            _ranking = value
        End Set
    End Property

    Public Function MatchName(searchTerm As String) As Boolean
        Return _name.ToLower() = searchTerm
    End Function

    Public Sub SetResult(rank As Integer, name As String)
        If (Not IsNothing(_name)) Then
            Return
        End If

        Ranking = rank
        _name = name
    End Sub
End Class
```

For each of the following statements, select Yes if the statement is true. Otherwise, select No. Each correct selection is worth one point.

Answer Area

Description of Behavior	Yes	No
You can only set the player’s ranking once.	<input type="radio"/>	<input type="radio"/>
If you call the MatchName method, the code will throw an exception.	<input type="radio"/>	<input type="radio"/>
You can change Key from “player” to “racer”.	<input type="radio"/>	<input type="radio"/>

- A. Mastered
- B. Not Mastered

Answer: A

Explanation:

Answer Area

Description of Behavior	Yes	No
You can only set the player’s ranking once.	<input checked="" type="radio"/>	<input type="radio"/>
If you call the MatchName method, the code will throw an exception.	<input checked="" type="radio"/>	<input type="radio"/>
You can change Key from “player” to “racer”.	<input type="radio"/>	<input checked="" type="radio"/>

NEW QUESTION 133

HOTSPOT - (Topic 2)

For each of the following statements, select Yes if the statement is true. Otherwise, select No. Each correct selection is worth one point.

Answer Area

Statement	Yes	No
XHTML attribute names must be in uppercase.	<input type="radio"/>	<input type="radio"/>
XHTML attribute values must be in quotation marks.	<input type="radio"/>	<input type="radio"/>
XHTML attribute minimization is forbidden.	<input type="radio"/>	<input type="radio"/>

- A. Mastered
- B. Not Mastered

Answer: A

Explanation:

Answer Area

Statement	Yes	No
XHTML attribute names must be in uppercase.	<input type="radio"/>	<input checked="" type="radio"/>
XHTML attribute values must be in quotation marks.	<input checked="" type="radio"/>	<input type="radio"/>
XHTML attribute minimization is forbidden.	<input checked="" type="radio"/>	<input type="radio"/>

NEW QUESTION 137

- (Topic 2)

This question requires that you evaluate the underlined text to determine if it is correct.

When creating a site to utilize message queuing, the "IP address" must be configured to MSMQ.

Select the correct answer if the underlined text does not make the statement correct. Select "No change is needed" if the underlined text makes the statement correct.

- A. No change is needed

- B. protocol
- C. host header
- D. port

Answer: B

Explanation:

MSMQ is a messaging protocol that allows applications running on separate servers/processes to communicate in a failsafe manner.

NEW QUESTION 141

- (Topic 2)

This question requires that you evaluate the underlined text to determine if it is correct.

Unit testing is the final set of tests that must be completed before a feature or product can be considered finished.

Select the correct answer if the underlined text does not make the statement correct. Select "No change is needed" if the underlined text makes the statement correct.

- A. No change is needed
- B. User acceptance
- C. System
- D. Integration

Answer: B

Explanation:

User acceptance testing (UAT) is the last phase of the software testing process. During UAT, actual software users test the software to make sure it can handle required tasks in real-world scenarios, according to specifications.

UAT is one of the final and critical software project procedures that must occur before newly developed software is rolled out to the market.

UAT is also known as beta testing, application testing or end user testing.

NEW QUESTION 146

- (Topic 2)

What are two methods that can be used to evaluate the condition of a loop at the start of each iteration? (Each correct answer presents a complete solution. Choose two.)

- A. For
- B. D
- C. . . While
- D. If
- E. While

Answer: AD

Explanation:

For and While constructs check at the start of each iteration.

NEW QUESTION 151

- (Topic 2)

You execute the following code.

```
For i = 0 to 10 Step 2
    Console.WriteLine("Hello")
Next
```

How many times will the word Hello be printed?

- A. 5
- B. 6
- C. 10
- D. 12

Answer: B

NEW QUESTION 154

DRAG DROP - (Topic 2)

You are developing an application that displays a list of race results. The race results are stored in the following class:

```
Public Class RaceSpeedRecord
    Public Faster As RaceSpeedRecord
    Public Slower As RaceSpeedRecord
    Public Race As String
    Public Time As Double
End Class
```

The code that manages the list is as follows:

```
Public Class Results
    Public CurrentOlympicRecord As RaceSpeedRecord

    Public Sub New()
        CurrentOlympicRecord = New RaceSpeedRecord()
    End Sub

    Public Sub AddRace(raceName As String, time As Double)

    End Sub
End Class
```

You need to implement the AddRace method.
Match the code segment to its location. (To answer, drag the appropriate code segment from the column on the left to its location on the right. Each code segment may be used once, more than once, or not at all. Each correct match is worth one point.)

Code Segments

current.Faster

current.Slower

current.Time

current.Race

Answer Area

```
Public Sub AddRace(raceName As String, time As Double)

    Dim current = CurrentOlympicRecord

    While 

Code Segment

 > time

        current = 

Code Segment



    End While
    Dim rsr = New RaceSpeedRecord
    rsr.Race = raceName
    rsr.Time = time

    rsr.Faster = 

Code Segment



    rsr.Slower = 

Code Segment



    current.Faster.Slower = rsr
    current.Slower.Faster = rsr
End Sub
```

- A. Mastered
- B. Not Mastered

Answer: A

Explanation:

Code Segments

current.Faster

current.Slower

current.Time

current.Race

Answer Area

```
Public Sub AddRace(raceName As String, time As Double)

    Dim current = CurrentOlympicRecord

    While 

current.Time

 > time

        current = 

current.Slower



    End While
    Dim rsr = New RaceSpeedRecord
    rsr.Race = raceName
    rsr.Time = time

    rsr.Faster = 

current.Faster



    rsr.Slower = 

current.Slower



    current.Faster.Slower = rsr
    current.Slower.Faster = rsr
End Sub
```

NEW QUESTION 156

- (Topic 2)

This question requires that you evaluate the underlined text to determine if it is correct.
The benefit of using a transaction when updating multiple tables is that the update cannot fail.
Select the correct answer if the underlined text does not make the statement correct. Select "No change is needed" if the underlined text makes the statement correct.

- A. No change is needed
- B. succeeds or fails as a unit
- C. finishes as quickly as possible
- D. can be completed concurrently with other transactions

Answer: B

Explanation:

The benefit of using a transaction when updating multiple tables is that the update succeeds or fails as a unit.

NEW QUESTION 160

- (Topic 2)

In your student directory database, the Students table contains the following fields:

firstName lastName emailAddress telephoneNumber

You need to retrieve the data from the firstName, lastName, and emailAddress fields for all students listed in the directory. The results must be in alphabetical order according to lastName and then firstName.

Which statement should you use?

- ☐ A. `SELECT firstName, lastName, emailAddress
FROM Students BY lastName, firstName`
- ☐ B. `SELECT firstName, lastName
FROM Students
ORDER BY lastName, firstName, emailAddress`
- ☐ C. `SELECT firstName, lastName, emailAddress
FROM Students
SORT BY lastName, firstName`
- ☐ D. `SELECT firstName, lastName, emailAddress
FROM Students
ORDER BY lastName, firstName`

- A. Option A
B. Option B
C. Option C
D. Option D

Answer: D

Explanation:

to sort use: ORDER BY LastName, FirstName

NEW QUESTION 163

HOTSPOT - (Topic 2)

You are creating a Windows Store application that uses the following gesture:



Use the drop-down menus to select the answer choice that completes each statement. Each correct selection is worth one point.

Answer Area

The gesture shown in the graphic is called [answer choice].

The surface displayed after the gesture has been completed is the [answer choice].

Answer Area

The gesture shown in the graphic is called [answer choice].

- moving
pushing
sliding
swiping

The surface displayed after the gesture has been completed is the [answer choice].

- app bar
canvas
charms
context menu

A. Mastered

B. Not Mastered

Answer: A

Explanation:

Answer Area

The gesture shown in the graphic is called [answer choice].

moving
pushing
sliding
swiping

The surface displayed after the gesture has been completed is the [answer choice].

app bar
canvas
charms
context menu

NEW QUESTION 166

- (Topic 2)

You are creating an application that presents the user with a Windows Form. Which event is triggered each time the Windows Form receives focus?

- A. Load
- B. Enter
- C. Activated
- D. paint

Answer: B

Explanation:

When you change the focus by using the mouse or by calling the Focus method, focus events of the Control class occur in the following order:
Enter GotFocus LostFocus Leave Validating Validated

NEW QUESTION 170

HOTSPOT - (Topic 2)

For each of the following statements, select Yes if the statement is true. Otherwise, select No. Each correct selection is worth one point.

Answer Area

Description of Behavior	Yes	No
A linked list has a maximum of 100 nodes.	<input type="radio"/>	<input type="radio"/>
You can add new nodes anywhere in a linked list.	<input type="radio"/>	<input type="radio"/>
A linked list can be sorted.	<input type="radio"/>	<input type="radio"/>

- A. Mastered
B. Not Mastered

Answer: A

Explanation:

Answer Area

Description of Behavior	Yes	No
A linked list has a maximum of 100 nodes.	<input type="radio"/>	<input checked="" type="radio"/>
You can add new nodes anywhere in a linked list.	<input checked="" type="radio"/>	<input type="radio"/>
A linked list can be sorted.	<input checked="" type="radio"/>	<input type="radio"/>

NEW QUESTION 173

- (Topic 2)

Two classes named Circle and Square inherit from the Shape class. Circle and Square both inherit Area from the Shape class, but each computes Area differently.

Which term is used to describe this object-oriented concept?

- A. encapsulation
- B. superclassing
- C. polymorphism
- D. overloading

Answer: C

Explanation:

You can use polymorphism to in two basic steps:

Create a class hierarchy in which each specific shape class derives from a common base class.

Use a virtual method to invoke the appropriate method on any derived class through a single call to the base class method.

NEW QUESTION 175

- (Topic 2)

The Dog class and the Cat class inherit from the Animal class. The Animal class includes a breathe() method and a speak() method. If the speak() method is called from an object of

type Dog, the result is a bark. If the speak() method is called from an object of type Cat, the result is a meow.

Which term is used to describe this object-oriented concept?

- A. multiple inheritance
- B. encapsulation
- C. polymorphism
- D. data hiding

Answer: C

Explanation:

Polymorphism is often referred to as the third pillar of object-oriented programming, after encapsulation and inheritance. Polymorphism is a Greek word that means "many-shaped" and it has two distinct aspects:

* At run time, objects of a derived class may be treated as objects of a base class in places such as method parameters and collections or arrays. When this occurs, the object's declared type is no longer identical to its run-time type.

* Base classes may define and implement virtual methods, and derived classes can override them, which means they provide their own definition and implementation. At run- time, when client code calls the method, the CLR looks up the run-time type of the object, and invokes that override of the virtual method. Thus in your source code you can call a method on a base class, and cause a derived class's version of the method to be executed.

NEW QUESTION 177

DRAG DROP - (Topic 2)

You are extending an application that stores and displays the results of various types of foot races. The application contains the following definitions:

```
Public Interface IDisplayResult
    Sub Display()
End Interface
```

```
Public Class Race
    Public Seconds As Integer

    Public Overridable Sub Display()
        Console.WriteLine(Seconds)
    End Sub
End Class
```

The following code is used to display the result for a race:

```
Dim r1 = New FootRace()
Dim r2 = TryCast(r1, IDisplayResult)
r1.Seconds = 99

r1.Display()
r2.Display()
r1.DisplayRaw()
```

The contents of the console must be as follows:

- ? 99 seconds
- ? 1.65 minutes
- ? 99

You need to implement the FootRace class.

Match the method declaration to the method body. (To answer, drag the appropriate declaration from the column on the left to its body on the right. Each declaration may be used once, more than once, or not at all. Each correct match is worth one point.)

Code Segments

```
Public Overrides Sub Display()
```

```
Public Sub DisplayRaw()
```

```
Public Sub Display() Implements IDisplayResult.Display
```

```
Private Sub Display()
```

Answer Area

```
Public Class FootRace
    Inherits Race
    Implements IDisplayResult
```

Code Segment

```
    Console.WriteLine(Seconds & "seconds")
End Sub
```

Code Segment

```
    MyBase.Display()
End Sub
```

Code Segment

```
    Console.WriteLine(Seconds / 60 & " minutes")
End Sub
End Class
```

- A. Mastered
- B. Not Mastered

Answer: A

Explanation:

Code Segments

```
Public Overrides Sub Display()
```

```
Public Sub DisplayRaw()
```

```
Public Sub Display() Implements IDisplayResult.Display
```

```
Private Sub Display()
```

Answer Area

```
Public Class FootRace
    Inherits Race
    Implements IDisplayResult
```

```
Public Overrides Sub Display()
```

```
    Console.WriteLine(Seconds & "seconds")
End Sub
```

```
Public Sub DisplayRaw()
```

```
    MyBase.Display()
End Sub
```

```
Public Sub Display() Implements IDisplayResult.Display
```

```
    Console.WriteLine(Seconds / 60 & " minutes")
End Sub
End Class
```

NEW QUESTION 178

- (Topic 2)

You are writing a Web application that processes room reservation requests. You need to verify that the room that a guest has selected is not already reserved by another guest.

Which type of programming should you use to determine whether the room is still available when the request is made?

- A. client-side
- B. batch processing
- C. server-side
- D. multithreaded

Answer: C

Explanation:

For room availability we need to check a database located on a server.

NEW QUESTION 182

- (Topic 2)

You are creating an application for computers that run Windows XP or later. This application must run after the computer starts. The user must not be aware that the application is running.

The application performs tasks that require permissions that the logged-in user does not have.

Which type of application allows this behavior?

- A. Windows Forms application
- B. DOS batch file
- C. Terminate-and-stay-resident (TSR) program
- D. Windows Service application

Answer: D

NEW QUESTION 184

- (Topic 2)

You have a table named ITEMS with the following fields:

? ID (integer, primary key. auto generated)

? Description (text)

? Completed (Boolean)

You need to insert the following data in the table: "Cheese", False

Which statement should you use?

- A. INSERT INTO ITEMS (Description, Completed) VALUES ('Cheese', 1)
- B. INSERT INTO ITEMS (ID, Description, Completed) VALUES (NEWID(), 'Cheese', 0)
- C. INSERT INTO ITEMS (ID, Description, Completed) VALUES (1, 'Cheese', 0)
- D. INSERT INTO ITEMS (Description, Completed) VALUES ('Cheese', 0)

Answer: D

Explanation:

The string values TRUE and FALSE can be converted to bit values: TRUE is converted to 1 and FALSE is converted to 0.

Incorrect:

Not B, not C: ID is autogenerated and should not be specified.

NEW QUESTION 187

- (Topic 2)

What are two advantages of normalization in a database? (Choose two.)

- A. reduces schema limitations
- B. minimizes impact of data corruption
- C. decreases space used on disk
- D. prevents data inconsistencies

Answer: CD

NEW QUESTION 189

- (Topic 2)

A class named Manager is derived from a parent class named Employee. The Manager class includes characteristics that are unique to managers.

Which term is used to describe this object-oriented concept?

- A. inheritance
- B. data modeling
- C. data hiding
- D. encapsulation

Answer: A

Explanation:

Classes (but not structs) support the concept of inheritance. A class that derives from another class (the base class) automatically contains all the public, protected, and internal members of the base class except its constructors and destructors.

Incorrect:

not D: Encapsulation is sometimes referred to as the first pillar or principle of object-oriented programming. According to the principle of encapsulation, a class or struct can specify how accessible each of its members is to code outside of the class or struct. Methods and variables that are not intended to be used from outside of the class or assembly can be hidden to limit the potential for coding errors or malicious exploits.

NEW QUESTION 191

- (Topic 2)

You need to create a property in a class. Consumers of the class must be able to read the values of the property. Consumers of the class must be prevented from writing values to the property.

Which property procedure should you include?

- A. Set
- B. Get
- C. Let
- D. Return

Answer: B

NEW QUESTION 193

- (Topic 2)

You need to ensure the data integrity of a database by resolving insertion, update, and deletion anomalies.

Which term is used to describe this process in relational database design?

- A. Normalization
- B. Integration
- C. Isolation
- D. Resolution

Answer: A

Explanation:

Database normalization is the process of organizing the fields and tables of a relational database to minimize redundancy. Normalization usually involves dividing large tables into smaller (and less redundant) tables and defining relationships between them. The objective is to isolate data so that additions, deletions, and modifications of a field can be made in just one table and then propagated through the rest of the database using the defined relationships.

NEW QUESTION 197

- (Topic 2)

This question requires that you evaluate the underlined text to determine if it is correct.

The bubble sort algorithm steps through the list to be sorted, comparing adjacent items and swapping them if they are in the wrong order.

Select the correct answer if the underlined text does not make the statement correct. Select "No change is needed" if the underlined text makes the statement correct.

- A. No change is needed
- B. merge
- C. library
- D. insertion

Answer: A

NEW QUESTION 201

- (Topic 2)

You are developing a database that other programmers will query to display race results.

You need to provide the ability to query race results without allowing access to other information in the database.

What should you do?

- A. Add an AFTER UPDATE trigger on the result table to reject updates.
- B. Create an index on the result table.
- C. Place the query into a stored procedure.
- D. Disable implicit transactions.

Answer: C

NEW QUESTION 203

- (Topic 2)

This question requires that you evaluate the underlined text to determine if it is correct.

The process of transforming compiled C# code into an XML string for a web service is known as deserialization.

Select the correct answer if the underlined text does not make the statement correct. Select "No change is needed" if the underlined text makes the statement correct.

- A. No change is needed
- B. serialization
- C. decoding
- D. encoding

Answer: B

Explanation:

Serialization is the process of converting an object into a stream of bytes in order to store the object or transmit it to memory, a database, or a file. Its main purpose is to save the state of an object in order to be able to recreate it when needed.

Serialization allows the developer to save the state of an object and recreate it as needed, providing storage of objects as well as data exchange. Through serialization, a developer can perform actions like sending the object to a remote application by means of a Web Service, passing an object from one domain to another, passing an object through a firewall as an XML string, or maintaining security or user-specific information across applications.

NEW QUESTION 208

- (Topic 2)

You execute the following code.

```
For i = 0 to 100
    If I Mod 2 <> 0 Then
        Console.WriteLine("Hello")
    End If
Next
```

How many times will the word Hello be printed?

- A. 49
- B. 50
- C. 51
- D. 100

Answer: B

Explanation:

The mod operator computes the remainder after dividing its first operand by its second. All numeric types have predefined remainder operators. In this case the reminder will be nonzero 50 times (for i with values 1, 3, 5,...,99).

NEW QUESTION 211

- (Topic 2)

Which language allows you to dynamically create content on the client side?

- A. Cascading Style Sheets (CSS)
- B. JavaScript (JS)
- C. Extensible Markup Language (XML)
- D. Hypertext Markup Language (HTML)

Answer: B

Explanation:

JavaScript (JS) is a dynamic computer programming language. It is most commonly used as part of web browsers, whose implementations allow client-side scripts to interact with the user, control the browser, communicate asynchronously, and alter the document content that is displayed.

NEW QUESTION 213

HOTSPOT - (Topic 2)

You are developing a web application.

You need to create the following graphic by using Cascading Style Sheets (CSS):



Use the drop-down menus to select the answer choice that completes each statement. Each correct selection is worth one point.

Answer Area

For the CSS Style **background-image**, you should use the value
[answer choice]

For the CSS Style **border-radius**, you should use the value **[answer choice]**

Answer Area

For the CSS Style **background-image**, you should use the value
[answer choice]

For the CSS Style **border-radius**, you should use the value **[answer choice]**

- A. Mastered
- B. Not Mastered

Answer: A

Explanation:

Answer Area

For the CSS Style **background-image**, you should use the value **[answer choice]**

▼

linear-gradient(to top, green, black);
linear-gradient(to bottom, green, black);
radial-gradient(green, black);
repeating-linear-gradient(green, black);

For the CSS Style **border-radius**, you should use the value **[answer choice]**

▼

10px;
10px, 10px, 10px;
inherit;
initial;

NEW QUESTION 216

- (Topic 2)

You are building a web application that enables international exchange students to schedule phone calls with their prospective schools.

The application allows students to indicate a preferred date and time for phone calls. Students may indicate no preferred time by leaving the date and time field empty. The application must support multiple time zones.

Which data type should you use to record the student's preferred date and time?

- A. uLong?
- B. DateTimeOffset?
- C. SByte
- D. Date

Answer: B

Explanation:

datetimeoffset: Defines a date that is combined with a time of a day that has time zone awareness and is based on a 24-hour clock.

Incorrect:

Date: Defines a date.

sByte: The sbyte keyword indicates an integral type that stores values in the range of -128 to 127.

NEW QUESTION 221

- (Topic 2)

This question requires that you evaluate the underlined text to determine if it is correct. Arguments are passed to console applications as a Hashtable object.

Select the correct answer if the underlined text does not make the statement correct. Select "No change is needed" if the underlined text makes the statement correct.

- A. No change is needed
- B. String Array
- C. StoredProcedureCollection
- D. Dictionary

Answer: B

Explanation:

Arguments are passed to console applications as a String Array object.

NEW QUESTION 223

- (Topic 2)

Which programming language is characterized as client-side, dynamic and weakly typed?

- A. ASP.NET
- B. C#
- C. JavaScript
- D. HTML

Answer: C

Explanation:

JavaScript is characterized as a dynamic, weakly typed, prototype-based language with first-class functions. It is primarily used in the form of client-side JavaScript for the development of dynamic websites.

NEW QUESTION 227

- (Topic 2)

You are developing an application that tracks tennis matches. A match is represented by the following class:

```
Public Class Match
    Public Property Location As String
    Public Property MatchDate As Date?

    Public Sub New()
        Location = "unknown"
    End Sub
End Class
```

A match is created by using the following code:

```
Dim match = New Match With  
    {.Location = "north region",  
    .MatchDate = New DateTime(2013, 4, 14)}
```

How many times is the Location property on the newly created Match class assigned?

- A. 1
- B. 2
- C. 3

Answer: C

NEW QUESTION 232

HOTSPOT - (Topic 2)

For each of the following statements, select Yes if the statement is true. Otherwise, select No. Each correct selection is worth one point.

Answer Area

Test Behavior	Yes	No
The primary goal of unit testing is to take the smallest piece of testable software in the application, isolate it from the remainder of the code, and determine whether it behaves exactly as expected.	<input type="radio"/>	<input type="radio"/>
In unit testing, each unit is tested separately before integrating the units into modules to test the interfaces between modules.	<input type="radio"/>	<input type="radio"/>
The driver that you use in unit testing simulates a calling unit and the stub simulates a called unit.	<input type="radio"/>	<input type="radio"/>

- A. Mastered
- B. Not Mastered

Answer: A

Explanation:

Answer Area

Test Behavior	Yes	No
The primary goal of unit testing is to take the smallest piece of testable software in the application, isolate it from the remainder of the code, and determine whether it behaves exactly as expected.	<input checked="" type="radio"/>	<input type="radio"/>
In unit testing, each unit is tested separately before integrating the units into modules to test the interfaces between modules.	<input checked="" type="radio"/>	<input type="radio"/>
The driver that you use in unit testing simulates a calling unit and the stub simulates a called unit.	<input checked="" type="radio"/>	<input type="radio"/>

NEW QUESTION 236

- (Topic 2)

What are two possible options for representing a Web application within Internet Information Services (IIS)? (Each correct answer presents a complete solution. Choose two.)

- A. web site
- B. virtual directory
- C. application directory
- D. application server
- E. Web directory

Answer: AB

Explanation:

* Create a Web Application
An application is a grouping of content at the root level of a Web site or a grouping of content in a separate folder under the Web site's root directory. When you add an application in IIS 7, you designate a directory as the application root, or starting point, for the application and then specify properties specific to that particular application, such as the application pool that the application will run in.
* You can make an Existing Virtual Directory a Web Application.

NEW QUESTION 238

- (Topic 2)
Which language was designed for the primary purpose of querying data, modifying data, and managing databases in a Relational Database Management System?

- A. C + +
- B. Java
- C. SQL
- D. Visual Basic

Answer: C

Explanation:

SQL is a special-purpose programming language designed for managing data held in a relational database management system (RDBMS).

NEW QUESTION 239

- (Topic 2)
You are creating an application that presents users with a graphical interface in which they computers that do not have network connectivity. Which type of application should you choose?

- A. ClickOnce
- B. Windows Service
- C. Windows Forms
- D. Console-based

Answer: C

Explanation:

Use Windows Forms when a GUI is needed.

NEW QUESTION 242

- (Topic 2)
The purpose of the Catch section in an exception handler is to:

- A. Conclude the execution of the application.
- B. Break out of the error handler.
- C. Execute code only when an exception is thrown.
- D. Execute code regardless of whether an exception is thrown.

Answer: C

NEW QUESTION 243

HOTSPOT - (Topic 2)
For each of the following statements, select Yes if the statement is true. Otherwise, select No. Each correct selection is worth one point.

Answer Area

Statement	Yes	No
Within an XHTML document, the XHTML DOCTYPE declaration is mandatory.	<input type="radio"/>	<input type="radio"/>
Within an XHTML document, the XML namespace attribute in the html tag is mandatory.	<input type="radio"/>	<input type="radio"/>
Within an XHTML document, the html, head, title, and body tags are mandatory.	<input type="radio"/>	<input type="radio"/>

- A. Mastered
- B. Not Mastered

Answer: A

Explanation:

Answer Area

Statement	Yes	No
Within an XHTML document, the XHTML DOCTYPE declaration is mandatory.	<input checked="" type="radio"/>	<input type="radio"/>
Within an XHTML document, the XML namespace attribute in the html tag is mandatory.	<input checked="" type="radio"/>	<input type="radio"/>
Within an XHTML document, the html, head, title, and body tags are mandatory.	<input checked="" type="radio"/>	<input type="radio"/>

NEW QUESTION 246

- (Topic 2)

You create an object of type ANumber. The class is defined as follows.

```
Public Class ANumber
    Private _number As Integer = 7
    Public Sub New ()
    End Sub
    Public Sub New (ByVal number As Integer)
        _number = number
    End Sub
End Class
```

The code is executed as follows.

```
Dim mynumber As ANumber = new ANumber(3);
```

What is the value of _number after the code is executed?

- A. Null
- B. 3
- C. 7

Answer: C

NEW QUESTION 250

- (Topic 2)

You run the following code:

```
Dim a As Integer = 10
Dim b As Integer = 20
Dim c As Integer = 30
Dim result As Integer = 0

If a <= b Or c > a Then
    result = 10
ElseIf a <= b Or c <= a Then
    result = 20
Else
    result = 30
End If
```

What is the value of result when the code has completed?

- A. 10
- B. 20
- C. 30

Answer: B

Explanation:

The conditional-OR operator (||) performs a logical-OR of its bool operands. If the first operand evaluates to true, the second operand isn't evaluated. If the first operand evaluates to false, the second operator determines whether the OR expression as a whole evaluates to true or false.

NEW QUESTION 253

- (Topic 2)

Which type of application has the following characteristics when it is installed?

? Runs continuously in the background by default when the startup type is set to automatic

? Presents no user interface

- A. Console-based
- B. Windows Forms
- C. Windows Service
- D. Batch file

Answer: C

Explanation:

A Windows service runs in the background and has no interface.

NEW QUESTION 258

- (Topic 2)

You are creating a variable for an application.

You need to store data that has the following characteristics in this variable:

? Consists of numbers and characters

? Includes numbers that have decimal points

Which data type should you use?

- A. Decimal
- B. Char
- C. String
- D. Single

Answer: C

Explanation:

Need a string to store characters.

NEW QUESTION 262

- (Topic 2)

The purpose of the Finally section in an exception handler is to:

- A. Execute code only when an exception is thrown.
- B. Break out of the error handler.
- C. Execute code regardless of whether an exception is thrown.
- D. Conclude the execution of the application.

Answer: C

Explanation:

By using a finally block, you can clean up any resources that are allocated in a try block, and you can run code even if an exception occurs in the try block.

Typically, the statements of a finally block run when control leaves a try statement. The transfer of control can occur as a result of normal execution, of execution of a break, continue, goto, or return statement, or of propagation of an exception out of the try statement.

NEW QUESTION 267

- (Topic 2)

When a web service is referenced from a client application in Microsoft Visual Studio, which two items are created? (Choose two.)

- A. a stub
- B. a proxy
- C. a.disco file
- D. a.wsdlfile

Answer: CD

Explanation:

A .wsdl file that references the Web service is created, together with supporting files, such as discovery (.disco and .discomap) files, that include information about where the Web service is located.

NEW QUESTION 268

- (Topic 2)

Which term is used to describe a class that inherits functionality from an existing class?

- A. Superclass
- B. Base class
- C. Inherited class
- D. Derived class

Answer: D

Explanation:

Classes (but not structs) support the concept of inheritance. A class that derives from another class (the base class) automatically contains all the public,

protected, and internal members of the base class except its constructors and destructors.

NEW QUESTION 269

HOTSPOT - (Topic 2)

You are reviewing the following code that saves uploaded images.

```
Public Structure ImageInfo
    Public Data As Byte()
    Public Length As Integer
    Public Id As Guid
End Structure

Public Sub Post()
    Dim uploaded = PostedImage()
    Dim newImage = New ImageInfo()
    newImage.Data = uploaded
    newImage.Length = uploaded.Length
    newImage.Id = Guid.NewGuid()
End Sub
```

For each of the following statements, select Yes if the statement is true. Otherwise, select No. Each correct selection is worth one point.

Answer Area

Description of Behavior	Yes	No
The bytes that comprise the image are stored on the stack.	<input type="radio"/>	<input type="radio"/>
The length of the image data is stored on the heap.	<input type="radio"/>	<input type="radio"/>
The Id of the image is stored on the stack.	<input type="radio"/>	<input type="radio"/>

- A. Mastered
- B. Not Mastered

Answer: A

Explanation:

Answer Area

Description of Behavior	Yes	No
The bytes that comprise the image are stored on the stack.	<input type="radio"/>	<input checked="" type="radio"/>
The length of the image data is stored on the heap.	<input type="radio"/>	<input checked="" type="radio"/>
The Id of the image is stored on the stack.	<input checked="" type="radio"/>	<input type="radio"/>

NEW QUESTION 270

- (Topic 2)

How does a console-based application differ from a Windows Store app?

- A. Windows Store apps do not provide a method for user input
- B. Console-based applications do not display a graphical interface.
- C. Windows Store apps can access network resources.
- D. Console-based applications require the XNA Framework to run.

Answer: B

NEW QUESTION 273

- (Topic 2)

You need to create a stored procedure that passes in a person's name and age. Which statement should you use to create the stored procedure?

- A. `UPDATE PROCEDURE StoreData
 @UserName nvarchar(255),
 @Age int`
- B. `CREATE PROCEDURE StoreData
 @UserName char,
 @Age double`
- C. `CREATE PROCEDURE StoreData
 @UserName nvarchar(255),
 @Age int`
- D. `CREATE PROCEDURE StoreData (@UserName, @Age)`

- A. Option A
 B. Option B
 C. Option C
 D. Option D

Answer: C

Explanation:

Example (nvarchar and int are best here):
 The following example creates a stored procedure that returns information for a specific employee by passing values for the employee's first name and last name. This procedure accepts only exact matches for the parameters passed.
 CREATE PROCEDURE HumanResources.uspGetEmployees
 @LastName nvarchar(50),
 @FirstName nvarchar(50) AS
 SET NOCOUNT ON;
 SELECT FirstName, LastName, JobTitle, Department FROM HumanResources.vEmployeeDepartment
 WHERE FirstName = @FirstName AND LastName = @LastName; GO

NEW QUESTION 275

- (Topic 2)

You plan to create an application for your company. The application will run automated routines and write the results to a text-based log file. Little or no user interaction is required.

Security requirements on the host computers prevent you from running applications on startup, and users must be able to see the status easily on the screen. The host computers also have limited memory and monitors that display only two colors. These computers will have no network connectivity.

Which type of application should you use for this environment?

- A. Windows Store app
 B. console-based
 C. DirectX
 D. Windows Service

Answer: B

Explanation:

Building Console Applications
 Applications in the .NET Framework can use the System.Console class to read characters from and write characters to the console. Data from the console is read from the standard input stream, data to the console is written to the standard output stream, and error data to the console is written to the standard error output stream.

NEW QUESTION 280

- (Topic 2)

You need to debug a Windows Service application by using breakpoints. What should you do?

- A. Write all events to an event log.
 B. Set the Windows Service status to Paused.
 C. Implement the Console.WriteLine method throughout the Windows Service.
 D. use the Attach to Process menu in Microsoft Visual Studio.

Answer: D

Explanation:

* Because a service must be run from within the context of the Services Control Manager rather than from within Visual Studio, debugging a service is not as straightforward as debugging other Visual Studio application types. To debug a service, you must start the service and then attach a debugger to the process in which it is running.

* To debug a service Install your service.

Start your service, either from Services Control Manager, Server Explorer, or from code. In Visual Studio, choose Attach to Process from the Debug menu. Etc.

NEW QUESTION 284

- (Topic 2)

Which language uses Data Definition Language (DDL) and Data Manipulation Language (DML)?

- A. Java
- B. C+ +
- C. SQL
- D. Pascal

Answer: C

Explanation:

SQL uses DDL and DML.

NEW QUESTION 287

.....

THANKS FOR TRYING THE DEMO OF OUR PRODUCT

Visit Our Site to Purchase the Full Set of Actual 98-361 Exam Questions With Answers.

We Also Provide Practice Exam Software That Simulates Real Exam Environment And Has Many Self-Assessment Features. Order the 98-361 Product From:

<https://www.2passeasy.com/dumps/98-361/>

Money Back Guarantee

98-361 Practice Exam Features:

- * 98-361 Questions and Answers Updated Frequently
- * 98-361 Practice Questions Verified by Expert Senior Certified Staff
- * 98-361 Most Realistic Questions that Guarantee you a Pass on Your FirstTry
- * 98-361 Practice Test Questions in Multiple Choice Formats and Updatesfor 1 Year