

Exam Questions 98-361

Microsoft MTA Software Development Fundamentals

<https://www.2passeasy.com/dumps/98-361/>



NEW QUESTION 1

- (Topic 1)

This question requires that you evaluate the underlined text to determine if it is correct. The default entry point for a console application is the Class method.

Select the correct answer if the underlined text does not make the statement correct. Select

"No change is needed" if the underlined text makes the statement correct.

- A. No change is needed
- B. Main
- C. Program
- D. Object

Answer: B

Explanation:

The default entry point for a console application is the Class Main.

NEW QUESTION 2

- (Topic 1)

A class named Manager is derived from a parent class named Employee. The Manager class includes characteristics that are unique to managers.

Which term is used to describe this object-oriented concept?

- A. Encapsulation
- B. Data modeling
- C. Inheritance
- D. Data hiding

Answer: C

Explanation:

Classes (but not structs) support the concept of inheritance. A class that derives from another class (the base class) automatically contains all the public, protected, and internal members of the base class except its constructors and destructors.

Incorrect:

not A: Encapsulation is sometimes referred to as the first pillar or principle of object-oriented programming. According to the principle of encapsulation, a class or struct can specify how accessible each of its members is to code outside of the class or struct. Methods and variables that are not intended to be used from outside of the class or assembly can be hidden to limit the potential for coding errors or malicious exploits.

NEW QUESTION 3

- (Topic 1)

Which type of application has the following characteristics when it is installed?

? Runs continuously in the background by default when the startup type is set to automatic

? Presents no user interface

- A. Windows Service
- B. Windows Forms
- C. Console-based
- D. Batch file

Answer: A

Explanation:

A Windows service runs in the background and has no interface.

NEW QUESTION 4

- (Topic 1)

You are creating a routine that will perform calculations by using a repetition structure. You need to ensure that the entire loop executes at least once.

Which looping structure should you use?

- A. For
- B. While
- C. Do„While
- D. Fo
- E. „Each

Answer: :C

Explanation:

In a Do..While loop the test is at the end of the structure, so it will be executed at least once.

NEW QUESTION 5

- (Topic 1)

A data warehouse database is designed to:

- A. Enable business decisions by collecting, consolidating, and organizing data.
- B. Support a large number of concurrent users.
- C. Support real-time business operations.
- D. Require validation of incoming data during real-time business transactions.

Answer: A

NEW QUESTION 6

- (Topic 1)

You are creating a variable for an application.

You need to store data that has the following characteristics in this variable:

? Consists of numbers and characters

? Includes numbers that have decimal points

Which data type should you use?

- A. String
- B. Float
- C. Char
- D. Decimal

Answer: A

Explanation:

Need a string to store characters.

NEW QUESTION 7

HOTSPOT - (Topic 1)

For each of the following statements, select Yes if the statement is true. Otherwise, select No. Each correct selection is worth one point.

Answer Area

Statement	Yes	No
Within an XHTML document, the XHTML DOCTYPE declaration is mandatory.	<input type="radio"/>	<input type="radio"/>
Within an XHTML document, the XML namespace attribute in the html tag is mandatory.	<input type="radio"/>	<input type="radio"/>
Within an XHTML document, the html, head, title, and body tags are mandatory.	<input type="radio"/>	<input type="radio"/>

- A. Mastered
- B. Not Mastered

Answer: A

Explanation:

Answer Area

Statement	Yes	No
Within an XHTML document, the XHTML DOCTYPE declaration is mandatory.	<input checked="" type="radio"/>	<input type="radio"/>
Within an XHTML document, the XML namespace attribute in the html tag is mandatory.	<input checked="" type="radio"/>	<input type="radio"/>
Within an XHTML document, the html, head, title, and body tags are mandatory.	<input checked="" type="radio"/>	<input type="radio"/>

NEW QUESTION 8

- (Topic 1)

You are creating an application for a help desk center. Calls must be handled in the same order in which they were received.

Which data structure should you use?

- A. Binary tree
- B. Stack
- C. Hashtable
- D. Queue

Answer: D

Explanation:

A queue keeps the order of the items.

NEW QUESTION 9

- (Topic 1)

You have a class with a property.

You need to ensure that consumers of the class can write to the value of the property. Which keyword should you use?

- A. value
- B. add
- C. get
- D. set

Answer: D

Explanation:

Set:

The set { } implementation receives the implicit argument "value." This is the value to which the property is assigned.

* Property. On a class, a property gets and sets values. A simplified syntax form, properties are implemented in the IL as methods (get, set).

NEW QUESTION 10

- (Topic 1)

The elements of an array must be accessed by:

- A. Calling the item that was most recently inserted into the array.
- B. Calling the last item in the memory array.
- C. Using an integer index.
- D. Using a first-in, last-out (FILO) process.

Answer: C

NEW QUESTION 10

- (Topic 1)

You are creating the necessary variables for an application. The data you will store in these variables has the following characteristics:

? Consists of numbers

? Includes numbers that have decimal points

? Requires more than seven digits of precision

You need to use a data type that will minimize the amount of memory that is used. Which data type should you use?

- A. decimal
- B. double
- C. byte
- D. float

Answer: B

Explanation:

The double keyword signifies a simple type that stores 64-bit floating-point values.

Precision: 15-16 digits

Incorrect:

Not D: The float keyword signifies a simple type that stores 32-bit floating-point values. Precision: 7 digits

NEW QUESTION 12

- (Topic 1)

You have a class named Truck that inherits from a base class named Vehicle. The Vehicle class includes a protected method named brake ().

How should you call the Truck class implementation of the brake () method?

- A. Vehicl
- B. brake ();
- C. Thi
- D. brake ();
- E. MyBas
- F. brake();
- G. Truc
- H. brake ();

Answer: C

Explanation:

The MyBase keyword behaves like an object variable referring to the base class of the current instance of a class. MyBase is commonly used to access base class members that are overridden or shadowed in a derived class.

NEW QUESTION 14

- (Topic 1)

The following functions are defined:

```
private static int Printer(int j)
{
    for (var i = j; i > 0; i = Printer(i - 1))
    {
        Console.Write(i);
    }
    return j;
}
```

What does the console display after the following line? Printer(2);

- A. 210
- B. 211
- C. 2101
- D. 2121

Answer: B

NEW QUESTION 15

- (Topic 1)

Simulating the final design of an application in order to ensure that the development is progressing as expected is referred to as:

- A. Analyzing requirements
- B. Prototyping
- C. Software testing
- D. Flowcharting

Answer: C

NEW QUESTION 16

- (Topic 1)

How should you configure an application to consume a Web service?

- A. Add the Web service to the development computer.
- B. Add a reference to the Web service in the application.
- C. Add a reference to the application in the Web service.
- D. Add the Web service code to the application.

Answer: B

Explanation:

Start by adding a Service Reference to the project. Right-click the ConsoleApplication1 project and choose ??Add Service Reference??:

NEW QUESTION 17

- (Topic 1)

You execute the following code.

```
bool beakerFull = true;
bool flameOn = false;
int iResult;

switch (beakerFull)
{
    case true:
        switch (flameOn)
        {
            case true:
                iResult = 1;
                break;
            case false:
                iResult = 2;
                break;
        }
        break;
    case false:
        switch (flameOn)
        {
            case false:
                iResult = 3;
                break;
            case true:
                iResult = 4;
                break;
        }
        break;
}
```

What will the variable result be?

- A. 1
- B. 2
- C. 3
- D. 4

Answer: B

NEW QUESTION 20

- (Topic 1)

You are reviewing a design for a database. A portion of this design is shown in the exhibit. Note that you may choose to view either the Crow's Foot Notation or Chen Notation version of the design. (To view the Crow's Foot Notation, click the Exhibit A button. To view the Chen Notation, click the Exhibit B button.)

Exhibit A



Exhibit B



Which term is used to describe the relationship between Customer and Order?

- A. many-to-many
- B. one-to-many
- C. one-dimensional
- D. one-to-one
- E. multi-dimensional

Answer: B

Explanation:

A customer can have many orders.

NEW QUESTION 23

- (Topic 1)

What are the three basic states that a Windows service can be in? (Choose three.)

- A. halted

- B. running
- C. stopped
- D. paused
- E. starting

Answer: BCD

Explanation:

A service can exist in one of three basic states: Running, Paused, or Stopped.

NEW QUESTION 26

- (Topic 1)

Which function does Simple Object Access Protocol (SOAP) provide when using Web services?

- A. directory of registered Web services
- B. communications protocol
- C. security model
- D. model for describing Web services

Answer: B

Explanation:

SOAP, originally defined as Simple Object Access Protocol, is a protocol specification for exchanging structured information in the implementation of web services in computer networks. It relies on XML Information Set for its message format, and usually relies on other application layer protocols, most notably Hypertext Transfer Protocol (HTTP) or Simple Mail Transfer Protocol (SMTP), for message negotiation and transmission.

NEW QUESTION 31

- (Topic 1)

In the life cycle of an ASP. NET Web page, which phase follows the SaveStateComplete phase?

- A.PostBack
- B. PostInit
- C. Load
- D. Render

Answer: D

Explanation:

The SaveStateComplete event is raised after the view state and control state of the page and controls on the page are saved to the persistence medium. This is the last event raised before the page is rendered to the requesting browser.

NEW QUESTION 35

HOTSPOT - (Topic 1)

You are reviewing the following class that is used to manage the results of a 5K race:

```
public class Player
{
    private string _name;
    public const string Key = "player";

    public bool MatchName(string searchTerm)
    {
        return _name.ToLower() == searchTerm;
    }

    public void SetResult(int rank, string name)
    {
        if (_name != null)
            return;

        Ranking = rank;
        _name = name;
    }

    public int Ranking { get; private set; }
}
```

For each of the following statements, select Yes if the statement is true. Otherwise, select No. Each correct selection is worth one point.

Answer Area

Description of Behavior	Yes	No
You can only set the player’s ranking once.	<input type="radio"/>	<input type="radio"/>
If you call the MatchName method, the code will throw an exception.	<input type="radio"/>	<input type="radio"/>
You can change Key from “player” to “racer”.	<input type="radio"/>	<input type="radio"/>

- A. Mastered
- B. Not Mastered

Answer: A

Explanation:

Answer Area

Description of Behavior	Yes	No
You can only set the player’s ranking once.	<input checked="" type="radio"/>	<input type="radio"/>
If you call the MatchName method, the code will throw an exception.	<input checked="" type="radio"/>	<input type="radio"/>
You can change Key from “player” to “racer”.	<input type="radio"/>	<input checked="" type="radio"/>

NEW QUESTION 38

- (Topic 1)
You are creating an application that presents the user with a Windows Form. You need to configure the application to display a message box to confirm that the user wants to close the form.
Which event should you handle?

- A. Deactivate
- B. Leave
- C. FormClosed
- D. FormClosing

Answer: D

Explanation:

The Closing event occurs as the form is being closed.

NEW QUESTION 39

- (Topic 1)
This question requires that you evaluate the underlined text to determine if it is correct.
A piece of text that is 4096 bytes or smaller and is stored on and retrieved from the client computer to maintain state is known as a ViewState.
Select the correct answer if the underlined text does not make the statement correct. Select "No change is needed" if the underlined text makes the statement correct.

- A. No change is needed
- B. cookie
- C. form post
- D. QueryString

Answer:

B

Explanation:

A piece of text that is 4096 bytes or smaller and is stored on and retrieved from the client computer to maintain state is known as a Cookie.

NEW QUESTION 41

- (Topic 1)

What are two advantages of normalization in a database? (Choose two)

- A. prevents data inconsistencies
- B. reduces schema limitations
- C. minimizes impact of data corruption
- D. decreases space used on disk

Answer: AD

NEW QUESTION 44

- (Topic 1)

You create an application that uses Simple Object Access Protocol (SOAP).

Which technology provides information about the application's functionality to other applications?

- A. Web Service Description Language (WSDL)
- B. Extensible Application Markup Language (XAML)
- C. Common Intermediate Language (CIL)
- D. Universal Description, Discovery, and Integration (UDDI)

Answer: A

Explanation:

WSDL is often used in combination with SOAP and an XML Schema to provide Web services over the Internet. A client program connecting to a Web service can read the WSDL file to determine what operations are available on the server. Any special datatypes used are embedded in the WSDL file in the form of XML Schema. The client can then use SOAP to actually call one of the operations listed in the WSDL file using for example XML over HTTP.

NEW QUESTION 48

- (Topic 1)

Which two types of information should you include in an effective test case? (Choose two.)

- A. the expected result from testing the case
- B. multiple actions combined as a single step to test the case
- C. any pre-conditions necessary to test the case
- D. the stakeholders who originated the test case

Answer: AB

Explanation:

You can create manual test cases using Microsoft Test Manager that have both action and validation test steps. You can also share a set of common test steps between multiple test cases called shared steps. This simplifies maintenance of test steps if your application under test changes.

NEW QUESTION 50

- (Topic 1)

You are migrating several HTML pages to your website. Many of these pages contain HTML <center> and tags. Which XHTML document type declaration should you use?

- | | |
|----|--|
| A. | <code><!DOCTYPE HTML PUBLIC "-//W3C//DTD HTML 4.01 Transitional//EN" "http://www.w3.org/TR/html4/loose.dtd"></code> |
| B. | <code><!DOCTYPE html></code> |
| C. | <code><!DOCTYPE html PUBLIC "-//W3C//DTD XHTML 1.0 Frameset//EN" "http://www.w3.org/TR/xhtml1/DTD/xhtml1-frameset.dtd"></code> |
| D. | <code><!DOCTYPE html PUBLIC "-//W3C//DTD XHTML 1.0 Strict//EN" "http://www.w3.org/TR/xhtml1/DTD/xhtml1-strict.dtd"></code> |

- A. Option A
- B. Option B
- C. Option C
- D. Option D

Answer: A

Explanation:

The <!DOCTYPE> declaration is not an HTML tag; it is an instruction to the web browser about what version of HTML the page is written in.

XHTML 1.0 Transitional

This DTD contains all HTML elements and attributes, INCLUDING presentational and deprecated elements (like font). Framesets are not allowed. The markup must also be written as well-formed XML.

`<!DOCTYPE html PUBLIC "-//W3C//DTD XHTML 1.0 Transitional//EN" "http://www.w3.org/TR/xhtml1/DTD/xhtml1-transitional.dtd">`

NEW QUESTION 54

- (Topic 1)

You have a stack that contains integer values. The values are pushed onto the stack in the following order: 2,4,6,8.

The following sequence of operations is executed:

Pop Push 3 Pop Push 4
Push 6
Push 7 Pop Pop Pop
What is the value of the top element after these operations are executed?

- A. 2
- B. 3
- C. 6
- D. 7

Answer: B

NEW QUESTION 56

- (Topic 1)

This question requires that you evaluate the underlined text to determine if it is correct.

The Response.Redirect method is used to transfer processing of the current page to a new page, and then return processing back to the calling page once processing of the new page has completed.

Select the correct answer if the underlined text does not make the statement correct. Select "No change is needed" if the underlined text makes the statement correct.

- A. No change is needed
- B. Server.Transfer method
- C. Server.Execute method
- D. meta http-equiv="refresh" tag

Answer: C

Explanation:

The Execute method calls an .asp file, and processes it as if it were part of the calling ASP script. The Execute method is similar to a procedure call in many programming languages.

Incorrect:

* Response.Redirect Method

The Redirect method causes the browser to redirect the client to a different URL.

* The Server.Transfer method sends all of the information that has been assembled for processing by one .asp file to a second .asp file.

NEW QUESTION 60

- (Topic 1)

You have a Windows Service running in the context of an account that acts as a non- privileged user on the local computer. The account presents anonymous credentials to any remote server.

What is the security context of the Windows Service?

- A. LocalSystem
- B. User
- C. NetworkService
- D. LocalService

Answer: D

Explanation:

LocalService , which runs in the context of an account that acts as a non- privileged user on the local computer, and presents anonymous credentials to any remote server;

NEW QUESTION 65

- (Topic 1)

This question requires that you evaluate the underlined text to determine if it is correct. To improve performance, a SQL SELECT statement should use indexes.

Select the correct answer if the underlined text does not make the statement correct. Select "No change is needed" if the underlined text makes the statement correct.

- A. No change is needed
- B. joins
- C. grouping
- D. ordering

Answer: A

NEW QUESTION 67

- (Topic 1)

You need to group all the style settings into a separate file that can be applied to all the pages in a Web application.

What should you do?

- A. Use a Cascading Style Sheet (CSS).
- B. Use inline styles.
- C. Use an Extensible Markup Language (XML) schema.
- D. Use a WebKit.

Answer: A

Explanation:

Cascading Style Sheets (CSS) is a style sheet language used for describing the look and formatting of a document written in a markup language.

CSS is designed primarily to enable the separation of document content from document presentation, including elements such as the layout, colors, and fonts.

NEW QUESTION 68

- (Topic 1)

You execute the following code.

```
for(int i = 0; i <= 10; i+= 2)
{
    Console.WriteLine("Hello");
}
```

How many times will the word Hello be printed?

- A. 5
- B. 6
- C. 10
- D. 12

Answer: B

NEW QUESTION 70

- (Topic 1)

The purpose of a constructor in a class is to:

- A. Initialize an object of that class.
- B. Release the resources that the class holds.
- C. Create a value type.
- D. Inherit from the base class.

Answer: A

Explanation:

Each value type has an implicit default constructor that initializes the default value of that type.

NEW QUESTION 75

- (Topic 1)

You are developing a database that other programmers will query to display race results.

You need to provide the ability to query race results without allowing access to other information in the database.

What should you do?

- A. Disable implicit transactions.
- B. place the query into a stored procedure.
- C. Create an index on the result table.
- D. Add an AFTER UPDATE trigger on the result table to reject updates.

Answer: B

NEW QUESTION 76

- (Topic 1)

This question requires that you evaluate the underlined text to determine if it is correct.

Internet Information Services (IIS) must be installed on the client computers in order to run a deployed ASP.NET application.

Select the correct answer if the underlined text does not make the statement correct. Select "No change is needed" if the underlined text makes the statement correct.

- A. No change is needed
- B. computer that hosts the application
- C. computer that you plan to deploy from
- D. Application Layer Gateway Service

Answer: B

Explanation:

Internet Information Services (IIS) must be installed on computer that hosts the application in order to run a deployed ASP.NET application.

NEW QUESTION 80

HOTSPOT - (Topic 1)

You have a base class named Tree with a friend property named color and a protected property named NumberOfLeaves. In the same project, you also have a class named Person.

For each of the following statements, select Yes if the statement is true. Otherwise, select No. Each correct selection is worth one point.

Answer Area

Description of Behavior	Yes	No
Methods in the Person class can access the color property.	<input type="radio"/>	<input type="radio"/>
Methods in the Person class can access the NumberOfLeaves property.	<input type="radio"/>	<input type="radio"/>
Methods in the Tree class can access all private properties in Person.	<input type="radio"/>	<input type="radio"/>

- A. Mastered
 B. Not Mastered

Answer: A

Explanation:

Answer Area

Description of Behavior	Yes	No
Methods in the Person class can access the color property.	<input checked="" type="radio"/>	<input type="radio"/>
Methods in the Person class can access the NumberOfLeaves property.	<input type="radio"/>	<input checked="" type="radio"/>
Methods in the Tree class can access all private properties in Person.	<input type="radio"/>	<input checked="" type="radio"/>

NEW QUESTION 85

- (Topic 1)

When a web service is referenced from a client application in Microsoft Visual Studio, which two items are created? (Choose two.)

- A. a stub
 B. a.wsdl file
 C. a proxy
 D. a .disco file

Answer: BD

Explanation:

A .wsdl file that references the Web service is created, together with supporting files, such as discovery (.disco and .discomap) files, that include information about where the Web service is located.

NEW QUESTION 88

- (Topic 1)

You are creating an ASP. NET Web application.

Which line of code should you use to require a control to process on the computer that hosts the application?

- A. defaultRedirect="ServerPag
 B. htm"
 C. redirect="HostPag
 D. htm"
 E. AutoEvencWireup="true"
 F. runat="server"

Answer: D

NEW QUESTION 90

- (Topic 1)

You are creating a Web application. The application will be consumed by client computers that run a variety of Web browsers.

Which term is used to describe the process of making the application available for client computers to access?

- A. Casting
- B. Deploying
- C. Hosting
- D. Virtualization

Answer: C

Explanation:

You host web applications.

NEW QUESTION 95

- (Topic 1)

You are creating an application that accepts input and displays a response to the user. You cannot create a graphical interface for this application. Which type of application should you create?

- A. Windows Forms
- B. Windows Service
- C. Web-based
- D. Console-based

Answer: C

NEW QUESTION 96

- (Topic 1)

How many parameters can a default constructor have?

- A. 1
- B. 2
- C. 3 or more

Answer: A

Explanation:

If a class contains no instance constructor declarations, a default instance constructor is automatically provided. That default constructor simply invokes the parameterless constructor of the direct base class.

NEW QUESTION 99

- (Topic 1)

In the application life cycle, the revision of an application after it has been deployed is referred to as:

- A. Unit testing
- B. Integration
- C. Maintenance
- D. Monitoring

Answer: C

NEW QUESTION 103

- (Topic 1)

This question requires that you evaluate the underlined text to determine if it is correct.

When a base class declares a method as virtual, the method is hidden from implementation by a derived class.

Select the correct answer if the underlined text does not make the statement correct. Select "No change is needed" if the underlined text makes the statement correct.

- A. No change is needed
- B. can be overridden with its own implementation by a derived class
- C. must be overridden in any non-abstract class that directly inherits from that class
- D. cannot be overridden with its own implementation by a derived class

Answer: B

Explanation:

The implementation of a non-virtual method is invariant: The implementation is the same whether the method is invoked on an instance of the class in which it is declared or an instance of a derived class. In contrast, the implementation of a virtual method can be superseded by derived classes. The process of superseding the implementation of an inherited virtual method is known as overriding that method.

NEW QUESTION 108

- (Topic 1)

This question requires that you evaluate the underlined text to determine if it is correct.

A data dictionary that describes the structure of a database is called metadata.

Select the correct answer if the underlined text does not make the statement correct. Select "No change is needed" if the underlined text makes the statement correct.

- A. No change is needed
- B. normalization
- C. a database management system (DBMS)
- D. metacontent

Answer: A

NEW QUESTION 112

- (Topic 1)

Class C and Class D inherit from Class B. Class B inherits from Class A. The classes have the methods shown in the following table.

Class	Method
A	m1
B	m2
C	m3
D	m4

All methods have a protected scope.

Which methods does Class C have access to?

- A. only m3, m4
- B. only m2, m3
- C. only m1, m3
- D. m1, m3, m4
- E. m2, m3, m4
- F. m1, m2, m3

Answer: F

NEW QUESTION 117

- (Topic 1)

This question requires that you evaluate the underlined text to determine if it is correct.

When creating a site to utilize message queuing, the "IP address" must be configured to MSMQ.

Select the correct answer if the underlined text does not make the statement correct. Select "No change is needed" if the underlined text makes the statement correct.

- A. No change is needed
- B. protocol
- C. host header
- D. port

Answer: B

Explanation:

MSMQ is a messaging protocol that allows applications running on separate servers/processes to communicate in a failsafe manner.

NEW QUESTION 120

- (Topic 1)

What is displayed when you attempt to access a Web service by using a Web browser?

- A. a listing of methods that are available in the Web service
- B. a directory listing of the Web service's application structure
- C. an error page explaining that you have accessed the Web service incorrectly
- D. a visual depiction of your preliminary connection to the Web service

Answer: A

Explanation:

The server, in response to this request, displays the Web service's HTML description page.

The Web service's HTML description page shows you all the Web service methods supported by a particular Web service. Link to the desired Web service method and enter the necessary parameters to test the method and see the XML response.

NEW QUESTION 124

- (Topic 1)

Which service can host an ASP.NET application?

- A. Internet Information Services
- B. Cluster Services
- C. Remote Desktop Services
- D. Web Services

Answer: A

Explanation:

Using Internet Information Services (IIS) Manager, you can create a local Web site for hosting an ASP.NET Web application.

NEW QUESTION 128

- (Topic 1)

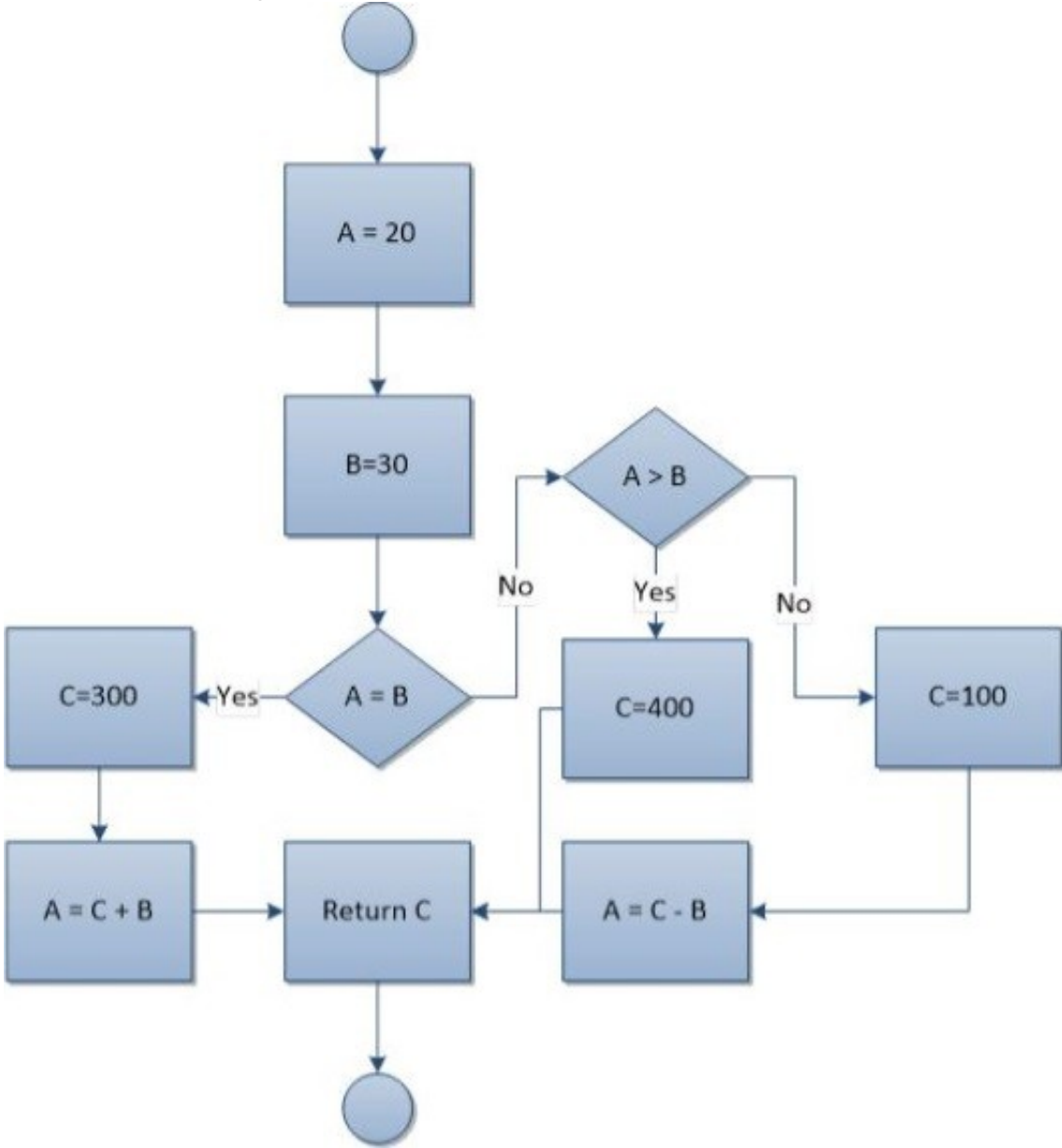
You need to create a property in a class. Consumers of the class must be able to read the values of the property. Consumers of the class must be prevented from

writing values to the property.
Which property procedure should you include?

- A. Return
- B. Get
- C. Set
- D. Let

Answer: B

NEW QUESTION 132
HOTSPOT - (Topic 1)
You have the following flowchart:



Use the drop-down menus to select the answer choice that completes each statement Each correct selection is worth one point.

Answer Area

The value that is returned is [answer choice].

The value of A is [answer choice].

Answer Area

The value that is returned is [answer choice].

20

100

300

400

The value of A is [answer choice].

20

30

70

330

- A. Mastered
- B. Not Mastered

Answer: A

Explanation:

Answer Area

The value that is returned is [answer choice].

20

100

300

400

The value of A is [answer choice].

20

30

70

330

NEW QUESTION 136

- (Topic 1)

Which language uses Data Definition Language (DDL) and Data Manipulation Language (DML)?

- A. SQL
- B. C++
- C. Pascal
- D. Java

Answer: A

Explanation:

SQL uses DDL and DML.

NEW QUESTION 141

- (Topic 1)

In which order do the typical phases of the Software Development Life Cycle occur?

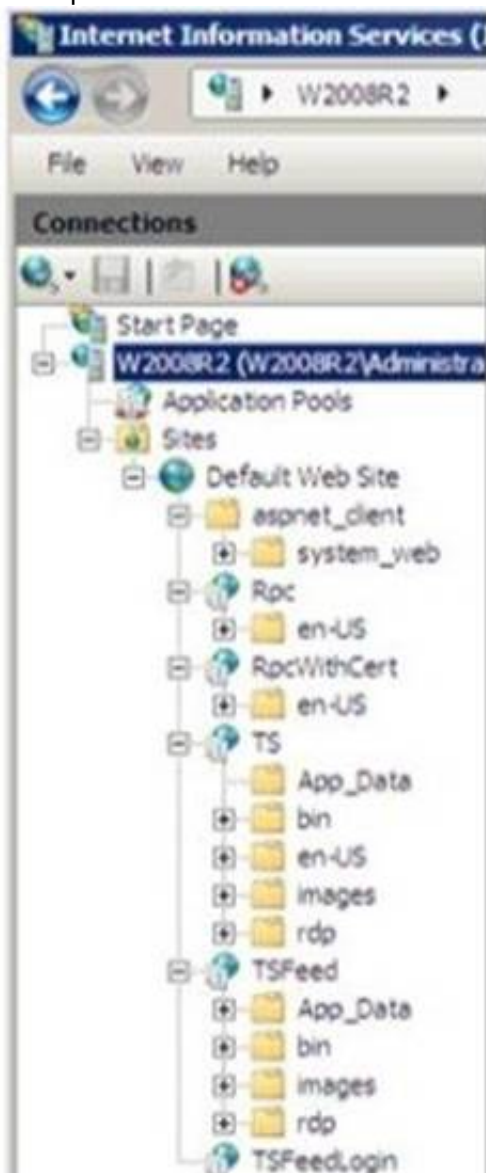
- A. Development, design, requirements gathering, and testing
- B. Design, requirements gathering, development, and testing
- C. Design, development, requirements gathering, and testing
- D. Requirements gathering, design, development, and testing

Answer: D

NEW QUESTION 142

HOTSPOT - (Topic 1)

You open the Internet Information Services 7.5 Manager console as shown in the following exhibit:



You need to examine the current configuration of the server W2008R2.

Use the drop-down menus to select the answer choice that answers each question. Each correct selection is worth one point.

Answer Area

How many sites are configured on server W2008R2?

How many applications are configured on server W2008R2?

Answer Area

How many sites are configured on server W2008R2?

0
1
5
13

How many applications are configured on server W2008R2?

0
1
5
13

- A. Mastered
B. Not Mastered

Answer: A

Explanation:

Answer Area

How many sites are configured on server W2008R2?

0
1
5
13

How many applications are configured on server W2008R2?

0
1
5
13

NEW QUESTION 144

HOTSPOT - (Topic 1)

You are developing a web application.

You need to create the following graphic by using Cascading Style Sheets (CSS):



Use the drop-down menus to select the answer choice that completes each statement. Each correct selection is worth one point.

Answer Area

For the CSS Style **background-image**, you should use the value [answer choice]

For the CSS Style **border-radius**, you should use the value [answer choice]

Answer Area

For the CSS Style **background-image**, you should use the value [answer choice]

linear-gradient(to top, green, black);
linear-gradient(to bottom, green, black);
radial-gradient(green, black);
repeating-linear-gradient(green, black);

For the CSS Style **border-radius**, you should use the value [answer choice]

10px;
10px, 10px, 10px;
inherit;
initial;

- A. Mastered
B. Not Mastered

Answer: A

Explanation:

Answer Area

For the CSS Style **background-image**, you should use the value **[answer choice]**

linear-gradient(to top, green, black);
 linear-gradient(to bottom, green, black);
 radial-gradient(green, black);
 repeating-linear-gradient(green, black);

For the CSS Style **border-radius**, you should use the value **[answer choice]**

10px;
 10px, 10px, 10px;
 inherit;
 initial;

NEW QUESTION 148

- (Topic 1)

Where must Internet Information Services (IIS) be installed in order to run a deployed ASP. NET application?

- A. on the computer that you plan to deploy from
- B. on the computer that hosts the application
- C. on the Application Layer Gateway Service
- D. on the client computers

Answer: B

Explanation:

IIS is run on the web server. The web server is hosting the application.

NEW QUESTION 150

- (Topic 1)

You need to allow a consumer of a class to modify a private data member. What should you do?

- A. Assign a value directly to the data member.
- B. Provide a private function that assigns a value to the data member.
- C. Provide a public function that assigns a value to the data member.
- D. Create global variables in the class.

Answer: C

Explanation:

In this example (see below), the Employee class contains two private data members, name and salary. As private members, they cannot be accessed except by member methods. Public methods named GetName and Salary are added to allow controlled access to the private members. The name member is accessed by way of a public method, and the salary member is accessed by way of a public read-only property.

Note: The private keyword is a member access modifier. Private access is the least permissive access level. Private members are accessible only within the body of the class or the struct in which they are declared

Example:

```
class Employee2
{
    private string name = "FirstName, LastName"; private double salary = 100.0;
    public string GetName()
    {
        return name;
    }
    public double Salary
    {
        get { return salary; }
    }
}
```

NEW QUESTION 155

- (Topic 1)

You are creating an application that presents the user with a Windows Form.

Which event is triggered each time the Windows Form receives focus?

- A. Enter
- B. Paint
- C. Load
- D. Activated

Answer: A

Explanation:

When you change the focus by using the mouse or by calling the Focus method, focus events of the Control class occur in the following order: Enter GotFocus LostFocus Leave Validating Validated

NEW QUESTION 159

HOTSPOT - (Topic 1)

For each of the following statements, select Yes if the statement is true. Otherwise, select No. Each correct selection is worth one point.

Answer Area

Description of Behavior	Yes	No
The "is a" relationship between classes refers to composition.	<input type="radio"/>	<input type="radio"/>
The "has a" relationship between classes refers to inheritance.	<input type="radio"/>	<input type="radio"/>
Both composition and inheritance allow you to create sub-objects.	<input type="radio"/>	<input type="radio"/>

- A. Mastered
- B. Not Mastered

Answer: A

Explanation:

Answer Area

Description of Behavior	Yes	No
The "is a" relationship between classes refers to composition.	<input type="radio"/>	<input checked="" type="radio"/>
The "has a" relationship between classes refers to inheritance.	<input type="radio"/>	<input checked="" type="radio"/>
Both composition and inheritance allow you to create sub-objects.	<input checked="" type="radio"/>	<input type="radio"/>

NEW QUESTION 162

- (Topic 1)
What are two possible options for representing a Web application within Internet Information Services (IIS)? (Each correct answer presents a complete solution. Choose two.)

- A. Web site
- B. Web directory
- C. Virtual directory
- D. Application server
- E. Application directory

Answer: AC

Explanation:

* Create a Web Application
An application is a grouping of content at the root level of a Web site or a grouping of content in a separate folder under the Web site's root directory. When you add an application in IIS 7, you designate a directory as the application root, or starting point, for the application and then specify properties specific to that particular application, such as the application pool that the application will run in.
* You can make an Existing Virtual Directory a Web Application.

NEW QUESTION 166

- (Topic 2)
This question requires that you evaluate the underlined text to determine if it is correct.
Internet Information Services (IIS) must be installed on the client computers in order to run a deployed ASP.NET application.
Select the correct answer if the underlined text does not make the statement correct. Select "No change is needed" if the underlined text makes the statement correct.

- A. No change is needed
- B. computer that hosts the application
- C. computer that you plan to deploy from
- D. Application Layer Gateway Service

Answer: B

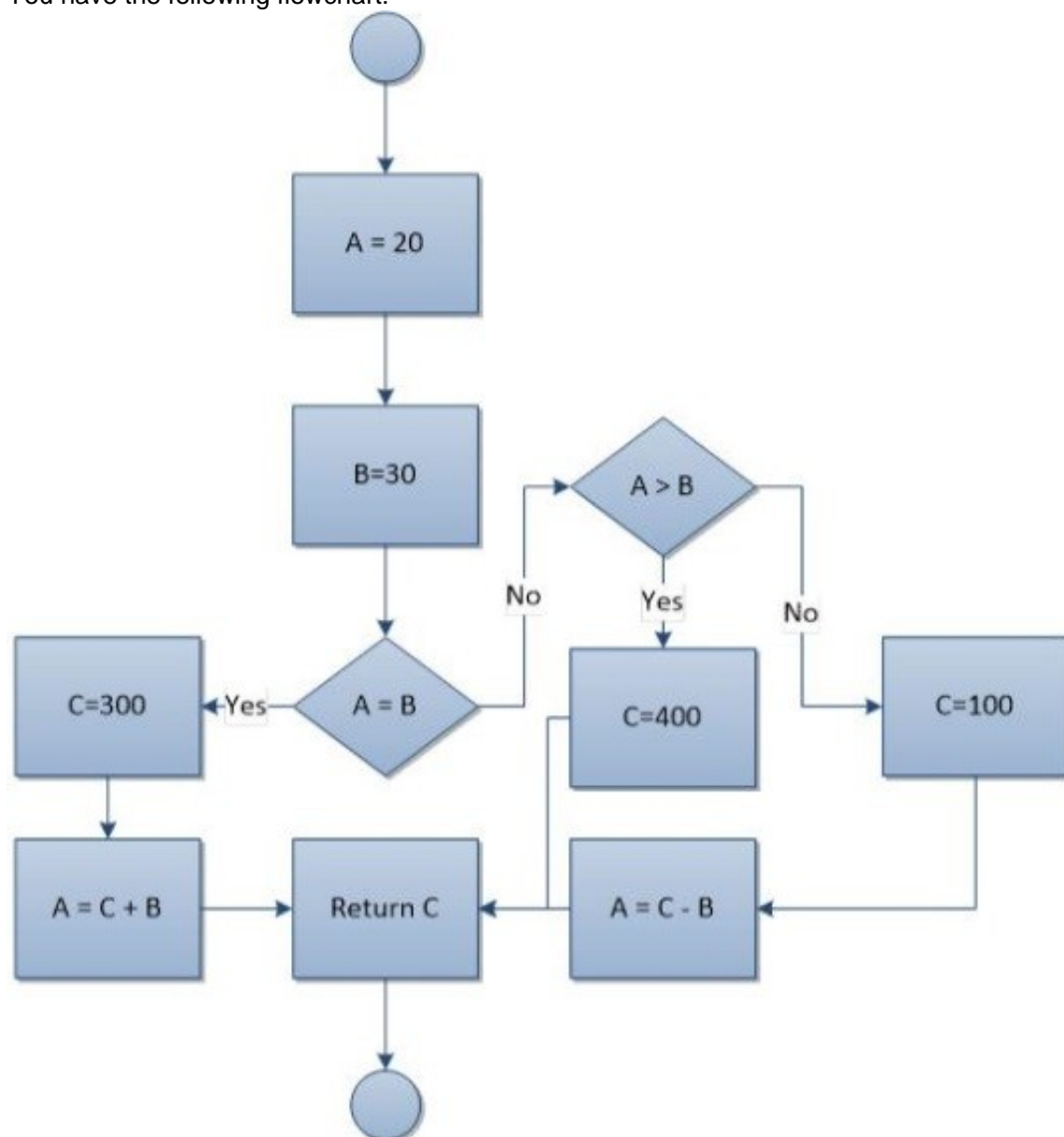
Explanation:

Internet Information Services (IIS) must be installed on computer that hosts the application in order to run a deployed ASP.NET application.

NEW QUESTION 171

HOTSPOT - (Topic 2)

You have the following flowchart:



Use the drop-down menus to select the answer choice that completes each statement Each correct selection is worth one point.

Answer Area

The value that is returned is [answer choice].

The value of A is [answer choice].

Answer Area

The value that is returned is [answer choice].

- 20
- 100
- 300
- 400

The value of A is [answer choice].

- 20
- 30
- 70
- 330

- A. Mastered
- B. Not Mastered

Answer: A

Explanation:

Answer Area

The value that is returned is [answer choice].

20
100
300
400

The value of A is [answer choice].

20
30
70
330

NEW QUESTION 175
HOTSPOT - (Topic 2)
You are reviewing the following class that is used to manage the results of a 5K race:

```
Public Class Player
    Private _name As String
    Public Const Key As String = "player"

    Private _ranking As Integer
    Public Property Ranking() As Integer
        Get
            Return _ranking
        End Get
        Private Set(value As Integer)
            _ranking = value
        End Set
    End Property

    Public Function MatchName(searchTerm As String) As Boolean
        Return _name.ToLower() = searchTerm
    End Function

    Public Sub SetResult(rank As Integer, name As String)
        If (Not IsNothing(_name)) Then
            Return
        End If

        Ranking = rank
        _name = name
    End Sub
End Class
```

For each of the following statements, select Yes if the statement is true. Otherwise, select No. Each correct selection is worth one point.

Answer Area

Description of Behavior	Yes	No
You can only set the player’s ranking once.	<input type="radio"/>	<input type="radio"/>
If you call the MatchName method, the code will throw an exception.	<input type="radio"/>	<input type="radio"/>
You can change Key from “player” to “racer”.	<input type="radio"/>	<input type="radio"/>

- A. Mastered
- B. Not Mastered

Answer: A

Explanation:

Answer Area

Description of Behavior	Yes	No
You can only set the player’s ranking once.	<input checked="" type="radio"/>	<input type="radio"/>
If you call the MatchName method, the code will throw an exception.	<input checked="" type="radio"/>	<input type="radio"/>
You can change Key from “player” to “racer”.	<input type="radio"/>	<input checked="" type="radio"/>

NEW QUESTION 177

HOTSPOT - (Topic 2)

For each of the following statements, select Yes if the statement is true. Otherwise, select No. Each correct selection is worth one point.

Answer Area

Statement	Yes	No
XHTML attribute names must be in uppercase.	<input type="radio"/>	<input type="radio"/>
XHTML attribute values must be in quotation marks.	<input type="radio"/>	<input type="radio"/>
XHTML attribute minimization is forbidden.	<input type="radio"/>	<input type="radio"/>

- A. Mastered
- B. Not Mastered

Answer: A

Explanation:

Answer Area

Statement	Yes	No
XHTML attribute names must be in uppercase.	<input type="radio"/>	<input checked="" type="radio"/>
XHTML attribute values must be in quotation marks.	<input checked="" type="radio"/>	<input type="radio"/>
XHTML attribute minimization is forbidden.	<input checked="" type="radio"/>	<input type="radio"/>

NEW QUESTION 179

- (Topic 2)

This question requires that you evaluate the underlined text to determine if it is correct.

When creating a site to utilize message queuing, the "IP address" must be configured to MSMQ.

Select the correct answer if the underlined text does not make the statement correct. Select "No change is needed" if the underlined text makes the statement correct.

- A. No change is needed

- B. protocol
- C. host header
- D. port

Answer: B

Explanation:

MSMQ is a messaging protocol that allows applications running on separate servers/processes to communicate in a failsafe manner.

NEW QUESTION 180

- (Topic 2)

In this XHTML code sample, what will cause an error?

```
<!DOCTYPE html PUBLIC "-//W3C//DTD XHTML 1.0 Strict//EN" "http://www.w3.org/TR/xhtml1/DTD/xhtml1-strict.dtd">
<html xmlns="http://www.w3.org/1999/xhtml" lang="en" xml:lang="en">
  <head>
    <title>The Title</title>
  </head>
  <body>
    <h1>This is a Heading.</h1>
    <p>This is a paragraph</p><br>
  </body>
</html>
```

- A. The line break tag is incorrectly formatted.
- B. The HTML tags do not read XHTML.
- C. The body tag is missing a background attribute,
- D. All tags are not in uppercase.

Answer: A

Explanation:

In XHTML, the
 tag must be properly closed, like this:
.

NEW QUESTION 181

DRAG DROP - (Topic 2)

You are developing an application that displays a list of race results. The race results are stored in the following class:

```
Public Class RaceSpeedRecord
  Public Faster As RaceSpeedRecord
  Public Slower As RaceSpeedRecord
  Public Race As String
  Public Time As Double
End Class
```

The code that manages the list is as follows:

```
Public Class Results
  Public CurrentOlympicRecord As RaceSpeedRecord

  Public Sub New()
    CurrentOlympicRecord = New RaceSpeedRecord()
  End Sub

  Public Sub AddRace(raceName As String, time As Double)

  End Sub
End Class
```

You need to implement the AddRace method.

Match the code segment to its location. (To answer, drag the appropriate code segment from the column on the left to its location on the right. Each code segment may be used once, more than once, or not at all. Each correct match is worth one point.)

Code Segments	Answer Area
<div>current.Faster</div> <div>current.Slower</div> <div>current.Time</div> <div>current.Race</div>	<pre>Public Sub AddRace(raceName As String, time As Double) Dim current = CurrentOlympicRecord While <div>Code Segment</div> > time current = <div>Code Segment</div> End While Dim rsr = New RaceSpeedRecord rsr.Race = raceName rsr.Time = time rsr.Faster = <div>Code Segment</div> rsr.Slower = <div>Code Segment</div> current.Faster.Slower = rsr current.Slower.Faster = rsr End Sub</pre>

- A. Mastered
- B. Not Mastered

Answer: A

Explanation:

Code Segments	Answer Area
<div>current.Faster</div> <div>current.Slower</div> <div>current.Time</div> <div>current.Race</div>	<pre> Public Sub AddRace(raceName As String, time As Double) Dim current = CurrentOlympicRecord While <u>current.Time</u> > time current = <u>current.Slower</u> End While Dim rsr = New RaceSpeedRecord rsr.Race = raceName rsr.Time = time rsr.Faster = <u>current.Faster</u> rsr.Slower = <u>current.Slower</u> current.Faster.Slower = rsr current.Slower.Faster = rsr End Sub </pre>

NEW QUESTION 183

- (Topic 2)

This question requires that you evaluate the underlined text to determine if it is correct.

The benefit of using a transaction when updating multiple tables is that the update cannot fail.

Select the correct answer if the underlined text does not make the statement correct. Select "No change is needed" if the underlined text makes the statement correct.

- A. No change is needed
- B. succeeds or fails as a unit
- C. finishes as quickly as possible
- D. can be completed concurrently with other transactions

Answer: B

Explanation:

The benefit of using a transaction when updating multiple tables is that the update succeeds or fails as a unit.

NEW QUESTION 188

- (Topic 2)

All objects in .NET inherit from which item?

- A. a reference type
- B. the System.Type class
- C. a value type
- D. the System.Object class

Answer: D

Explanation:

The System.Object class supports all classes in the .NET Framework class hierarchy and provides low-level services to derived classes. This is the ultimate base class of all classes in the .NET Framework; it is the root of the type hierarchy.

NEW QUESTION 189

- (Topic 2)

You are creating an application that presents the user with a Windows Form. Which event is triggered each time the Windows Form receives focus?

- A. Load
- B. Enter
- C. Activated
- D. paint

Answer: B

Explanation:

When you change the focus by using the mouse or by calling the Focus method, focus events of the Control class occur in the following order:
 Enter GotFocus LostFocus Leave Validating Validated

NEW QUESTION 192

- (Topic 2)

This question requires that you evaluate the underlined text to determine if it is correct. A data dictionary that describes the structure of a database is called metadata.

Select the correct answer if the underlined text does not make the statement correct. Select "No change is needed" if the underlined text makes the statement correct.

- A. No change is needed
- B. normalization
- C. a database management system (DBMS)
- D. metacontent

Answer: A

NEW QUESTION 194

HOTSPOT - (Topic 2)

For each of the following statements, select Yes if the statement is true. Otherwise, select No. Each correct selection is worth one point.

Answer Area

Description of Behavior	Yes	No
A linked list has a maximum of 100 nodes.	<input type="radio"/>	<input type="radio"/>
You can add new nodes anywhere in a linked list.	<input type="radio"/>	<input type="radio"/>
A linked list can be sorted.	<input type="radio"/>	<input type="radio"/>

- A. Mastered
- B. Not Mastered

Answer: A

Explanation:

Answer Area

Description of Behavior	Yes	No
A linked list has a maximum of 100 nodes.	<input type="radio"/>	<input checked="" type="radio"/>
You can add new nodes anywhere in a linked list.	<input checked="" type="radio"/>	<input type="radio"/>
A linked list can be sorted.	<input checked="" type="radio"/>	<input type="radio"/>

NEW QUESTION 199

- (Topic 2)

Two classes named Circle and Square inherit from the Shape class. Circle and Square both inherit Area from the Shape class, but each computes Area differently. Which term is used to describe this object-oriented concept?

- A. encapsulation
- B. superclassing
- C. polymorphism
- D. overloading

Answer: C

Explanation:

You can use polymorphism to in two basic steps:

Create a class hierarchy in which each specific shape class derives from a common base class.

Use a virtual method to invoke the appropriate method on any derived class through a single call to the base class method.

NEW QUESTION 204

- (Topic 2)

The Dog class and the Cat class inherit from the Animal class. The Animal class includes a breathe() method and a speak() method. If the speak() method is called from an object of

type Dog, the result is a bark. If the speak() method is called from an object of type Cat, the result is a meow.

Which term is used to describe this object-oriented concept?

- A. multiple inheritance
- B. encapsulation
- C. polymorphism
- D. data hiding

Answer: C

Explanation:

Polymorphism is often referred to as the third pillar of object-oriented programming, after encapsulation and inheritance. Polymorphism is a Greek word that means "many-shaped" and it has two distinct aspects:

* At run time, objects of a derived class may be treated as objects of a base class in places such as method parameters and collections or arrays. When this occurs, the object's declared type is no longer identical to its run-time type.

* Base classes may define and implement virtual methods, and derived classes can override them, which means they provide their own definition and implementation. At run-time, when client code calls the method, the CLR looks up the run-time type of the object, and invokes that override of the virtual method. Thus in your source code you can call a method on a base class, and cause a derived class's version of the method to be executed.

NEW QUESTION 209

- (Topic 2)

You are developing a webpage that enables students to manage races.

The webpage will display two lists: past races and upcoming races. The page also contains a sidebar with contact information and a panel with social media settings that can be edited. Race results can be shared on social media.

How many components will be on the webpage?

- A. 2
- B. 3
- C. 4
- D. 5

Answer: C

NEW QUESTION 211

- (Topic 2)

You are writing a Web application that processes room reservation requests. You need to verify that the room that a guest has selected is not already reserved by another guest.

Which type of programming should you use to determine whether the room is still available when the request is made?

- A. client-side
- B. batch processing
- C. server-side
- D. multithreaded

Answer: C

Explanation:

For room availability we need to check a database located on a server.

NEW QUESTION 215

- (Topic 2)

This question requires that you evaluate the underlined text to determine if it is correct. Converting an object to a more general type is called upcasting.

Select the correct answer if the underlined text does not make the statement correct. Select "No change is needed" if the underlined text makes the statement correct.

- A. No change is needed
- B. downcasting
- C. interfacing
- D. flexing

Answer: A

Explanation:

Casting up a hierarchy means casting from a derived object reference to a base object reference.

NEW QUESTION 218

- (Topic 2)

A class named Manager is derived from a parent class named Employee. The Manager class includes characteristics that are unique to managers.

Which term is used to describe this object-oriented concept?

- A. inheritance
- B. data modeling
- C. data hiding
- D. encapsulation

Answer: A

Explanation:

Classes (but not structs) support the concept of inheritance. A class that derives from another class (the base class) automatically contains all the public, protected, and internal members of the base class except its constructors and destructors.

Incorrect:

not D: Encapsulation is sometimes referred to as the first pillar or principle of object-oriented programming. According to the principle of encapsulation, a class or struct can specify how accessible each of its members is to code outside of the class or struct. Methods and variables that are not intended to be used from outside of the class or assembly can be hidden to limit the potential for coding errors or malicious exploits.

NEW QUESTION 220

- (Topic 2)
You have a class with a property.
You need to ensure that consumers of the class can write to the value of the property.
Which keyword should you use?

- A. Add
- B. value
- C. Set
- D. Get

Answer: C

Explanation:
Set:
The set { } implementation receives the implicit argument "value." This is the value to which the property is assigned.
* Property. On a class, a property gets and sets values. A simplified syntax form, properties are implemented in the IL as methods (get, set).

NEW QUESTION 225

HOTSPOT - (Topic 2)
For each of the following statements, select Yes if the statement is true. Otherwise, select No. Each correct selection is worth one point.

Answer Area

Description of Behavior	Yes	No
A queue’s items are stored in the order they were added.	<input type="radio"/>	<input type="radio"/>
A queue is a first in, first out (FIFO) data structure.	<input type="radio"/>	<input type="radio"/>
A queue has a limited number of items.	<input type="radio"/>	<input type="radio"/>

- A. Mastered
- B. Not Mastered

Answer: A

Explanation:
Answer Area

Description of Behavior	Yes	No
A queue’s items are stored in the order they were added.	<input checked="" type="radio"/>	<input type="radio"/>
A queue is a first in, first out (FIFO) data structure.	<input checked="" type="radio"/>	<input type="radio"/>
A queue has a limited number of items.	<input type="radio"/>	<input checked="" type="radio"/>

NEW QUESTION 228

- (Topic 2)
Which function does Simple Object Access Protocol (SOAP) provide when using Web services?

- A. communications protocol
- B. model for describing Web services
- C. directory of registered Web services
- D. security model

Answer: :A

Explanation:
SOAP, originally defined as Simple Object Access Protocol, is a protocol specification for exchanging structured information in the implementation of web services in computer networks. It relies on XML Information Set for its message format, and usually relies on other application layer protocols, most notably Hypertext

Transfer Protocol (HTTP) or Simple Mail Transfer Protocol (SMTP), for message negotiation and transmission.

NEW QUESTION 229

- (Topic 2)

This question requires that you evaluate the underlined text to determine if it is correct.

The process of transforming compiled C# code into an XML string for a web service is known as deserialization.

Select the correct answer if the underlined text does not make the statement correct. Select "No change is needed" if the underlined text makes the statement correct.

- A. No change is needed
- B. serialization
- C. decoding
- D. encoding

Answer: B

Explanation:

Serialization is the process of converting an object into a stream of bytes in order to store the object or transmit it to memory, a database, or a file. Its main purpose is to save the state of an object in order to be able to recreate it when needed.

Serialization allows the developer to save the state of an object and recreate it as needed, providing storage of objects as well as data exchange. Through serialization, a developer can perform actions like sending the object to a remote application by means of a Web Service, passing an object from one domain to another, passing an object through a firewall as an XML string, or maintaining security or user-specific information across applications.

NEW QUESTION 234

- (Topic 2)

You execute the following code.

```
For i = 0 to 100
    If I Mod 2 <> 0 Then
        Console.WriteLine("Hello")
    End If
Next
```

How many times will the word Hello be printed?

- A. 49
- B. 50
- C. 51
- D. 100

Answer: B

Explanation:

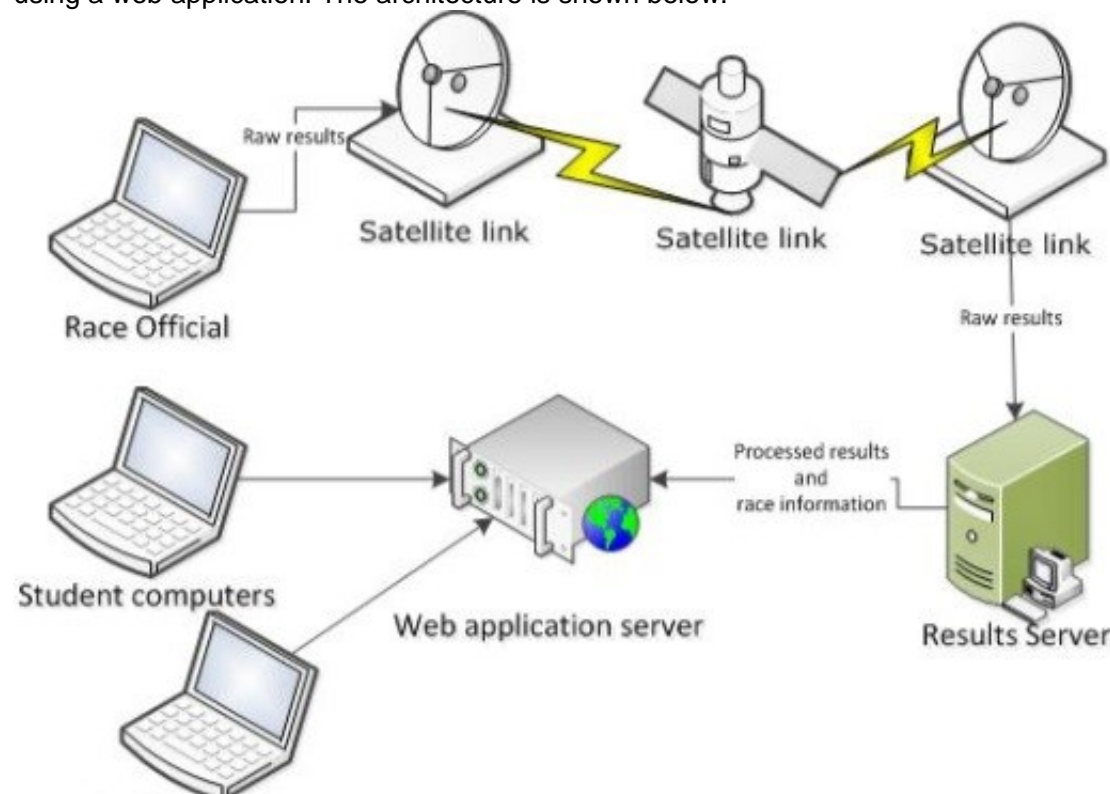
The mod operator computes the remainder after dividing its first operand by its second. All numeric types have predefined remainder operators.

In this case the remainder will be nonzero 50 times (for i with values 1, 3, 5,...,99).

NEW QUESTION 236

HOTSPOT - (Topic 2)

You are reviewing the architecture for a system that allows race officials to enter the results of 5K race results. The results are then made available to students using a web application. The architecture is shown below:



Use the drop-down menus to select the answer choice that answers each question. Each correct selection is worth one point.

Answer Area

To minimize the time between when a race official records the results and when the results are available on the web, which part of the system is critical?

To increase the number of students that can access race results, what element should be added to the system?

Answer Area

To minimize the time between when a race official records the results and when the results are available on the web, which part of the system is critical?

 satellite link
 student computer
 race official computer
 web application server

To increase the number of students that can access race results, what element should be added to the system?

 satellite link
 race officials
 results servers
 web application servers

- A. Mastered
- B. Not Mastered

Answer: A

Explanation:

Answer Area

To minimize the time between when a race official records the results and when the results are available on the web, which part of the system is critical?

 satellite link
 student computer
 race official computer
 web application server

To increase the number of students that can access race results, what element should be added to the system?

 satellite link
 race officials
 results servers
 web application servers

NEW QUESTION 240

- (Topic 2)

The throw keyword is used to perform which two actions? (Choose two.)

- A. stop processing of the code
- B. move error handling to a separate thread
- C. raise exceptions
- D. re-throw exceptions as a different type

Answer: CD

Explanation:

* The Throw statement throws an exception that you can handle with structured exception-handling code (Try...Catch...Finally) or unstructured exception- handling code (On Error GoTo). You can use the Throw statement to trap errors within your code because Visual Basic moves up the call stack until it finds the appropriate exception- handling code.

* This example throws an ApplicationException exception. Throw New ApplicationException

NEW QUESTION 244

- (Topic 2)

Which language allows you to dynamically create content on the client side?

- A. Cascading Style Sheets (CSS)
- B. JavaScript (JS)
- C. Extensible Markup Language (XML)
- D. Hypertext Markup Language (HTML)

Answer: B

Explanation:

JavaScript (JS) is a dynamic computer programming language. It is most commonly used as part of web browsers, whose implementations allow client-side scripts to interact with the user, control the browser, communicate asynchronously, and alter the document content that is displayed.

NEW QUESTION 247

- (Topic 2)

You are building a web application that enables international exchange students to schedule phone calls with their prospective schools.

The application allows students to indicate a preferred date and time for phone calls. Students may indicate no preferred time by leaving the date and time field empty. The application must support multiple time zones.

Which data type should you use to record the student's preferred date and time?

- A. uLong?

- B. DateTimeOffset?
- C. SByte
- D. Date

Answer: B

Explanation:

datetimeoffset: Defines a date that is combined with a time of a day that has time zone awareness and is based on a 24-hour clock.

Incorrect:

Date: Defines a date.

sByte: The sbyte keyword indicates an integral type that stores values in the range of -128 to 127.

NEW QUESTION 252

- (Topic 2)

You execute the following code.

```
Dim beakerFull As Boolean = True
Dim flameOn As Boolean = False
Dim iResult As Integer
```

```
    Select Case beakerFull
        Case True
            Select Case flameOn
                Case True
                    iResult = 1
                Case False
                    iResult = 2
            End Select
        Case False
            Select Case flameOn
                Case False
                    iResult = 3
                Case True
                    iResult = 4
            End Select
    End Select
```

What will the variable result be?

- A. 1
- B. 2
- C. 3
- D. 4

Answer: :B

NEW QUESTION 253

- (Topic 2)

You need to evaluate the following expression:

(A>B) AND (C<D)

What is the value of this expression if A=3, B=4, C=4, and D=5?

- A. 4
- B. 5
- C. False
- D. Null
- E. True

Answer: D

Explanation:

A>B is false.

NEW QUESTION 254

- (Topic 2)

You are reviewing a design for a database. A portion of this design is shown in the exhibits. Note that you may choose either the Crow's Foot Notation or Chen Notation version of the design. (To view the Crow's Foot Notation, click the Exhibit A button. To view the Chen Notation, click the Exhibit B button.)

Exhibit A



Exhibit B



Which term is used to describe the Customer component?

- A. Field
- B. Entity
- C. Property
- D. Attribute

Answer: B

Explanation:

Customer is a table (entity).

NEW QUESTION 258

- (Topic 2)

You are developing an application that tracks tennis matches. A match is represented by the following class:

```

Public Class Match
    Public Property Location As String
    Public Property MatchDate As Date?

    Public Sub New()
        Location = "unknown"
    End Sub
End Class
  
```

A match is created by using the following code:

```

Dim match = New Match With
    {.Location = "north region",
    .MatchDate = New DateTime(2013, 4, 14)}
  
```

How many times is the Location property on the newly created Match class assigned?

- A. 1
- B. 2
- C. 3

Answer: C

NEW QUESTION 263

- (Topic 2)

You have a Microsoft ASP.NET web application.

You need to store a value that can be shared across users on the server.

Which type of state management should you use?

- A. session
- B. application
- C. cookies
- D. ViewState

Answer: B

Explanation:

Application state is a data repository available to all classes in an ASP.NET application. Application state is stored in memory on the server and is faster than storing and retrieving information in a database. Unlike session state, which is specific to a single user session, application state applies to all users and sessions. Therefore, application state is a useful place to store small amounts of often-used data that does not change from one user to another.

Incorrect:

not A: Session State contains information that is pertaining to a specific session (by a particular client/browser/machine) with the server. It's a way to track what the user is doing on the site.. across multiple pages...amid the statelessness of the Web. e.g. the contents of a particular user's shopping cart is session data. Cookies can be used for session state. Not D: Viewstate is a state management technique in asp.net. ASP.NET Viewstate is preserving the data between the requests or postbacks and stored in hidden fields on the page.

NEW QUESTION 266

- (Topic 2)

You are migrating several HTML pages to your website. Many of these pages contain HTML <center> and tags. Which XHTML document type declaration should you use?

- | | |
|----|--|
| A. | <code><!DOCTYPE html PUBLIC "-//W3C//DTD XHTML 1.0 Strict//EN" "http://www.w3.org/TR/xhtml1/DTD/xhtml1-strict.dtd"></code> |
| B. | <code><!DOCTYPE html PUBLIC "-//W3C//DTD XHTML 1.0 Frameset//EN" "http://www.w3.org/TR/xhtml1/DTD/xhtml1-frameset.dtd"></code> |
| C. | <code><!DOCTYPE HTML PUBLIC "-//W3C//DTD HTML 4.01 Transitional//EN" "http://www.w3.org/TR/html4/loose.dtd"></code> |
| D. | <code><!DOCTYPE html></code> |

- A. Option A
B. Option B
C. Option C
D. Option D

Answer: C

Explanation:

The <!DOCTYPE> declaration is not an HTML tag; it is an instruction to the web browser about what version of HTML the page is written in. XHTML 1.0 Transitional

This DTD contains all HTML elements and attributes, INCLUDING presentational and deprecated elements (like font). Framesets are not allowed. The markup must also be written as well-formed XML.

`<!DOCTYPE html PUBLIC "-//W3C//DTD XHTML 1.0 Transitional//EN" "http://www.w3.org/TR/xhtml1/DTD/xhtml1-transitional.dtd">`

NEW QUESTION 269

- (Topic 2)

You have a class named Truck that inherits from a base class named Vehicle. The Vehicle class includes a protected method named brake (). How should you call the Truck Class implementation of the brake () method?

- A. MyBase.brake ()
B. Truck.brakef)
C. Vehicle.brake()
D. Me.brake ()

Answer: A

Explanation:

The MyBase keyword behaves like an object variable referring to the base class of the current instance of a class. MyBase is commonly used to access base class members that are overridden or shadowed in a derived class.

NEW QUESTION 274

- (Topic 2)

This question requires that you evaluate the underlined text to determine if it is correct.

When a base class declares a method as virtual, the method is hidden from implementation by a derived class.

Select the correct answer if the underlined text does not make the statement correct. Select "No change is needed" if the underlined text makes the statement correct.

- A. No change is needed
B. can be overridden with its own implementation by a derived class
C. must be overridden in any non-abstract class that directly inherits from that class
D. cannot be overridden with its own implementation by a derived class

Answer: B

NEW QUESTION 276

- (Topic 2)

Which language was designed for the primary purpose of querying data, modifying data, and managing databases in a Relational Database Management System?

- A. C ++
B. Java
C. SQL
D. Visual Basic

Answer: C

Explanation:

SQL is a special-purpose programming language designed for managing data held in a relational database management system (RDBMS).

NEW QUESTION 280

- (Topic 2)

You are creating an ASP. NET Web application.

Which line of code should you use to require a control to process on the computer that hosts the application?

- A. runat= "server"
B. redirect*="HostPag
C. htm"
D. AutoEventWireup="true"
E. defaultRedirect="ServerPag
F. htm"

Answer: A

NEW QUESTION 282

- (Topic 2)

The purpose of the Catch section in an exception handler is to:

- A. Conclude the execution of the application.
- B. Break out of the error handler.
- C. Execute code only when an exception is thrown.
- D. Execute code regardless of whether an exception is thrown.

Answer: C

NEW QUESTION 286

- (Topic 2)

You run the following code.

```
Dim beakerFull As Boolean = True
Dim flameOn As Boolean = False
Dim iResult As Integer

Select Case beakerFull
    Case True
        Select Case flameOn
            Case True
                iResult = 4
            Case False
                iResult = 3
        End Select
    Case False
        Case flameOn
            Case False
                iResult = 2
            Case True
                iResult = 1
        End Select
End Select
```

What will the value of the variable iResult be?

- A. 1
- B. 2
- C. 3
- D. 4

Answer: C

NEW QUESTION 291

- (Topic 2)

This question requires that you evaluate the underlined text to determine if it is correct. The Response.Redirect method is used to transfer processing of the current page to a new page, and then return processing back to the calling page once processing of the new page has completed.

Select the correct answer if the underlined text does not make the statement correct. Select "No change is needed" if the underlined text makes the statement correct.

- A. No change is needed
- B. Server.Transfer method
- C. Server.Execute method
- D. meta http-equiv="refresh" tag

Answer: C

Explanation:

The Execute method calls an .asp file, and processes it as if it were part of the calling ASP script. The Execute method is similar to a procedure call in many programming languages.

Incorrect:

* Response.Redirect Method

The Redirect method causes the browser to redirect the client to a different URL.

* The Server.Transfer method sends all of the information that has been assembled for processing by one .asp file to a second .asp file.

NEW QUESTION 294

- (Topic 2)

Which type of application has the following characteristics when it is installed?

- ? Runs continuously in the background by default when the startup type is set to automatic
- ? Presents no user interface

- A. Console-based

- B. Windows Forms
- C. Windows Service
- D. Batch file

Answer: C

Explanation:

A Windows service runs in the background and has no interface.

NEW QUESTION 299

HOTSPOT - (Topic 2)

For each of the following statements, select Yes if the statement is true. Otherwise, select No. Each correct selection is worth one point.

Answer Area

Description of Behavior	Yes	No
An entity relationship diagram (ERD) is designed for an object-oriented database.	<input type="radio"/>	<input type="radio"/>
An entity relationship diagram (ERD) contains entities, relationships, and attributes.	<input type="radio"/>	<input type="radio"/>
Cardinality refers to how one table is linked to another table; as one-to-many.	<input type="radio"/>	<input type="radio"/>

- A. Mastered
- B. Not Mastered

Answer: A

Explanation:

Answer Area

Description of Behavior	Yes	No
An entity relationship diagram (ERD) is designed for an object-oriented database.	<input type="radio"/>	<input checked="" type="radio"/>
An entity relationship diagram (ERD) contains entities, relationships, and attributes.	<input checked="" type="radio"/>	<input type="radio"/>
Cardinality refers to how one table is linked to another table; as one-to-many.	<input checked="" type="radio"/>	<input type="radio"/>

NEW QUESTION 304

- (Topic 2)

You are designing a class for an application. You need to restrict the availability of the member variable accessCount to the base class and to any classes that are derived from the base class.

Which access modifier should you use?

- A. Protected
- B. Private
- C. Public
- D. Friend

Answer: B

NEW QUESTION 308

- (Topic 2)

An application presents the user with a graphical interface. The interface includes buttons that the user clicks to perform tasks. Each time the user clicks a button, a method is called that corresponds to that button.

Which term is used to describe this programming model?

- A. Event driven
- B. Structured
- C. Service oriented
- D. Functional

Answer: A

NEW QUESTION 311

- (Topic 2)

You are creating a routine that will perform calculations by using a repetition structure. You need to ensure that the entire loop executes at least once.

Which looping structure should you use?

- A. For-Each
- B. For
- C. While
- D. Do-While

Answer: D

Explanation:

In a Do..While loop the test is at the end of the structure, so it will be executed at least once.

NEW QUESTION 312

- (Topic 2)

You are creating an application for a help desk center. Calls must be handled in the same order in which they were received.

Which data structure should you use?

- A. Queue
- B. Hashtable
- C. Stack
- D. Binary tree

Answer: :A

NEW QUESTION 317

- (Topic 2)

You have a stack that contains integer values. The values are pushed onto the stack in the following order: 2,4,6,8. The following sequence of operations is executed:

Pop

Push 3 Pop Push 4

Push 6

Push 7 Pop Pop Pop

What is the value of the top element after these operations are executed?

- A. 2
- B. 3
- C. 6
- D. 7

Answer: B

NEW QUESTION 318

- (Topic 2)

The purpose of the Finally section in an exception handler is to:

- A. Execute code only when an exception is thrown.
- B. Break out of the error handler.
- C. Execute code regardless of whether an exception is thrown.
- D. Conclude the execution of the application.

Answer: C

Explanation:

By using a finally block, you can clean up any resources that are allocated in a try block, and you can run code even if an exception occurs in the try block.

Typically, the statements of a finally block run when control leaves a try statement. The transfer of control can occur as a result of normal execution, of execution of a break, continue, goto, or return statement, or of propagation of an exception out of the try statement.

NEW QUESTION 323

- (Topic 2)

When a web service is referenced from a client application in Microsoft Visual Studio, which two items are created? (Choose two.)

- A. a stub
- B. a proxy
- C. a.disco file
- D. a.wsdlfile

Answer: CD

Explanation:

A .wsdl file that references the Web service is created, together with supporting files, such as discovery (.disco and .discomap) files, that include information about where the Web service is located.

NEW QUESTION 328

DRAG DROP - (Topic 2)

You are developing an application to display track and field race results.

The application must display the race results twice. The first time it must display only the winner and runner-up. The second time it must display all participants.

The code used to display results is shown below.

```
Public Sub Display()  
    For Each ranking In Rankings(True)  
        DisplayName(ranking)  
    Next  
  
    For Each ranking In Rankings(False)  
        Displayname(ranking)  
    Next  
End Sub
```

You need to implement the Rankings() function.
Complete the function to meet the requirements. (To answer, drag the appropriate code segment from the column on the left to its location on the right. Each code segment may be used once, more than once, or not at all. Each correct match is worth one point.)

Code Segments

Exit For

Exit Function

Return

Yield

Answer Area

```
Private Iterator Function Rankings(top2Only As Boolean) _  
    As IEnumerable(Of String)  
  
    Code Segment "John"  
  
    Code Segment "Nancy"  
  
    If (top2Only) Then  
        Code Segment  
    End If  
  
    Code Segment "Chris"  
  
End Function
```

- A. Mastered
- B. Not Mastered

Answer: A

Explanation:

Code Segments

Exit For

Exit Function

Return

Yield

Answer Area

```
Private Iterator Function Rankings(top2Only As Boolean) _  
    As IEnumerable(Of String)  
  
Yield "John"  
Yield "Nancy"  
  
If (top2Only) Then  
    Exit Function  
End If  
  
Yield "Chris"  
  
End Function
```

NEW QUESTION 329

- (Topic 2)
Which three are valid SQL keywords? (Choose three.)

- A. GET
- B. FROM
- C. SELECT
- D. WHAT
- E. WHERE

Answer: BCE

Explanation:

Example:
SELECT * FROM CustomersWHERE Country='Mexico';

NEW QUESTION 332

- (Topic 2)
Which three items are benefits of encapsulation? (Choose three.)

- A. restricted access
- B. flexibility

- C. maintainability
- D. performance
- E. inheritance

Answer: ABC

Explanation:

Encapsulation is the packing of data and functions into a single component. In programming languages, encapsulation is used to refer to one of two related but distinct notions, and sometimes to the combination thereof:

* A language mechanism for restricting access to some of the object's components.

* A language construct that facilitates the bundling of data with the methods (or other functions) operating on that data.

Incorrect:

not E: Encapsulation is one of the four fundamental OOP concepts. The other three are inheritance, polymorphism, and abstraction.

NEW QUESTION 333

- (Topic 2)

You need to allow a consumer of a class to modify a private data member. What should you do?

- A. Provide a public function that assigns a value to the data member.
- B. Create global variables in the class.
- C. Assign a value directly to the data member.
- D. Provide a private function that assigns a value to the data member.

Answer: A

Explanation:

In this example (see below), the Employee class contains two private data members, name and salary. As private members, they cannot be accessed except by member methods. Public methods named GetName and Salary are added to allow controlled access to the private members. The name member is accessed by way of a public method, and the salary member is accessed by way of a public read-only property.

Note: The private keyword is a member access modifier. Private access is the least permissive access level. Private members are accessible only within the body of the class or the struct in which they are declared

Example:

```
class Employee2
{
private string name = "FirstName, LastName"; private double salary = 100.0;
public string GetName()
{
return name;
}
public double Salary
{
get { return salary; }
}
}
```

NEW QUESTION 336

- (Topic 2)

In which order do the typical phases of the Software Development Life Cycle occur?

- A. Requirements gathering, design, development, and testing
- B. Development, design, requirements gathering, and testing
- C. Design, requirements gathering, development, and testing
- D. Design, development, requirements gathering, and testing

Answer: A

NEW QUESTION 337

- (Topic 2)

You are reviewing a design for a database. A portion of this design is shown in the exhibit. Note that you may choose to view either the Crow's Foot Notation or Chen Notation version of the design. (To view the Crow's Foot Notation, click the Exhibit A button. To view the Chen Notation, click the Exhibit B button.)

Exhibit A



Exhibit B



Which term is used to describe the relationship between Customer and Order?

- A. many-to-many
- B. multi-dimensional
- C. one-to-many
- D. one-to-one

E. one-dimensional

Answer: C

Explanation:

A customer can have many orders.

NEW QUESTION 340

- (Topic 2)

You need to create a stored procedure that passes in a person's name and age. Which statement should you use to create the stored procedure?

- A. `UPDATE PROCEDURE StoreData
@UserName nvarchar(255),
@Age int`
- B. `CREATE PROCEDURE StoreData
@UserName char,
@Age double`
- C. `CREATE PROCEDURE StoreData
@UserName nvarchar(255),
@Age int`
- D. `CREATE PROCEDURE StoreData (@UserName, @Age)`

- A. Option A
B. Option B
C. Option C
D. Option D

Answer: C

Explanation:

Example (nvarchar and int are best here):

The following example creates a stored procedure that returns information for a specific

employee by passing values for the employee's first name and last name. This procedure accepts only exact matches for the parameters passed.

```
CREATE PROCEDURE HumanResources.uspGetEmployees
```

```
@LastName nvarchar(50),
```

```
@FirstName nvarchar(50) AS
```

```
SET NOCOUNT ON;
```

```
SELECT FirstName, LastName, JobTitle, Department FROM HumanResources.vEmployeeDepartment
```

```
WHERE FirstName = @FirstName AND LastName = @LastName; GO
```

NEW QUESTION 345

- (Topic 2)

You have a Windows Service running in the context of an account that acts as a non- privileged user on the local computer. The account presents anonymous credentials to any remote server.

What is the security context of the Windows Service?

- A. Local System
B. NetworkService
C. user
D. LocalService

Answer: D

Explanation:

LocalService, which runs in the context of an account that acts as a non- privileged user on the local computer, and presents anonymous credentials to any remote server;

NEW QUESTION 349

- (Topic 2)

Which service can host an ASP.NET application?

- A. Remote Desktop Services
B. Internet Information Services
C. web Services
D. Cluster Services

Answer: :B

Explanation:

Using Internet Information Services (IIS) Manager, you can create a local Web site for hosting an ASP.NET Web application.

NEW QUESTION 350

- (Topic 2)

You have a class named Glass that inherits from a base class named Window. The Window class includes a protected method named break(). How should you call the Glass class implementation of the break() method?

- A. Glass.break()
- B. Window.break()
- C. Me.break()
- D. MyBase.break()

Answer: B

NEW QUESTION 355

.....

THANKS FOR TRYING THE DEMO OF OUR PRODUCT

Visit Our Site to Purchase the Full Set of Actual 98-361 Exam Questions With Answers.

We Also Provide Practice Exam Software That Simulates Real Exam Environment And Has Many Self-Assessment Features. Order the 98-361 Product From:

<https://www.2passeasy.com/dumps/98-361/>

Money Back Guarantee

98-361 Practice Exam Features:

- * 98-361 Questions and Answers Updated Frequently
- * 98-361 Practice Questions Verified by Expert Senior Certified Staff
- * 98-361 Most Realistic Questions that Guarantee you a Pass on Your FirstTry
- * 98-361 Practice Test Questions in Multiple Choice Formats and Updatesfor 1 Year