



# Microsoft

## Exam Questions AZ-600

Configuring and Operating a Hybrid Cloud with Microsoft Azure Stack Hub

NEW QUESTION 1

- (Exam Topic 1)

You need to implement the management app. The solution must meet the technical requirements. What should you use?

- A. a PowerShell session to litwareinc.com
- B. a browser session to litwareinc.com
- C. a PowerShell remoting session to the PEP
- D. a browser session to the administrator portal

Answer: D

Explanation:

Reference:

<https://docs.microsoft.com/en-us/azure-stack/operator/azure-stack-manage-portals?view=azs-2008>

NEW QUESTION 2

- (Exam Topic 2)

You schedule a planned maintenance window.

You need to perform an Azure Stack Hub update in the dev1 region. The solution must meet the technical requirements.

Which three actions should you perform in sequence? To answer, move the appropriate actions from the list of actions to the answer area and arrange them in the correct order.

Actions

Complete the activities identified in the Azure Stack Hub update activity checklist.

From the administrator portal, start the update process

From a privileged endpoint (PEP) session, run the `Stop-AzureStack` and `Start-AzureStack` cmdlets.

Download the required package and import the package to the respective storage account in the dev1 region.

Notify the users of the planned maintenance.

Answer Area

⬅

➡

⬆

⬆

- A. Mastered
- B. Not Mastered

Answer: A

Explanation:

Graphical user interface, text, application, chat or text message Description automatically generated

Reference:

<https://docs.microsoft.com/en-us/azure-stack/operator/azure-stack-updates?view=azs-2008>

NEW QUESTION 3

- (Exam Topic 3)

You have an Azure Stack Hub integrated system that is disconnected from the Internet.

You need to make a new image available in Azure Stack Hub Marketplace in the disconnected environment. From a computer that has Internet access, you download all the required tools.

Which four actions should you perform in sequence next? To answer, move the appropriate actions from the list of actions to the answer area and arrange them in the correct order.

Actions

Run the `Select-AzsMarketplaceItem` cmdlet

Run the `Install-Module -Name Azs.Syndication.Admin` command

Run the `Import-AzsMarketplaceItem` cmdlet

Run the `Export-AzsMarketplaceItem` cmdlet

Sign in to the Azure subscription used to register Azure Stack Hub

Answer Area

>

<

↑

↓

- A. Mastered  
B. Not Mastered

Answer: A

Explanation:

Reference:  
<https://docs.microsoft.com/en-us/azure-stack/operator/azure-stack-download-azure-marketplace-item?view=azs>

NEW QUESTION 4

- (Exam Topic 3)

You have three Azure Stack Hub integrated systems that use the same Azure Active Directory (Azure AD) tenant named contoso.com as their identity provider. The integrated systems are deployed in Chicago, New York, and Seattle. The region name of each integrated system corresponds to the city in which the system is deployed.

When reviewing alerts in the integrated system in Chicago, you receive an alert indicating that the home directory requires an update.

From the Azurestack-tools-master/identity folder, you import the AzureStack.Identity.psm1 module. How should you complete the command to update the home directory? To answer, select the appropriate options in the answer area.

NOTE: Each correct selection is worth one point.

Answer Area

`$adminResourceManagerEndpoint =`

"https://adminmanagement.chicago.contoso.com"

"https://adminportal.chicago.contoso.com"

"https://management.chicago.contoso.com"

`$homeDirectoryTenantName =`

"chicago.contoso.com"

"chicago.onmicrosoft.com"

"contoso.com"

`Update-AzSHomeDirectoryTenant -AdminResourceManagerEndpoint`

`$adminResourceManagerEndpoint -DirectoryTenantName`

`$homeDirectoryTenantName -Verbose`

- A. Mastered  
B. Not Mastered

Answer: A

Explanation:

Graphical user interface, text, application, email Description automatically generated

Reference:  
<https://github.com/Azure/AzureStack-Tools/blob/master/Identity/README.md>

NEW QUESTION 5

- (Exam Topic 3)

You have an Azure Stack Hub integrated system that is registered to an Azure Active Directory (Azure AD) tenant named contoso.com. The integrated system region name is region1.

You need to retrieve only critical infrastructure alerts from the integrated system by using the REST API. Which URI query should you use? To answer, drag the appropriate values to the correct locations. Each value may be used once, more than once, or not at all. You may need to drag the split bar between panes or scroll to view content.

NOTE: Each correct selection is worth one point.

| Values          | Answer Area  |
|-----------------|--|
| adminmanagement | https:// [ ] . [ ]   |
| region1         | .contoso.com/subscriptions/8f586592-077b-4433-966e-150c9c953bdd/resourcegroups/system. [ ]   |
| management      | /providers/microsoft.infrastructureinsights.   |
| local           | admin/regionhealths/ [ ]   |
| subscription    | /Alerts?\$filter=(Properties/State eq 'Active') and (Properties/Severity eq 'Critical')&\$orderby=Properties/CreatedTimestamp desc&api-version=2016-05-01" |

- A. Mastered
- B. Not Mastered

Answer: A

Explanation:

Graphical user interface, text, application Description automatically generated

Reference:

<https://docs.microsoft.com/en-us/azure-stack/user/azure-stack-rest-api-use?view=azs-2008>

NEW QUESTION 6

- (Exam Topic 3)

You have an Azure Stack Hub integrated system.

You need to create a new offer that can be used only by an operator to provision user subscriptions. The solution must simplify the process for users to create resources.

Which type of offer should you create?

- A. public with a base plan only
- B. delegated with a base plan only
- C. private with a base plan only
- D. decommissioned

Answer: B

Explanation:

Reference:

<https://docs.microsoft.com/en-us/azure-stack/operator/azure-stack-delegated-provider?view=azs-2008>

NEW QUESTION 7

- (Exam Topic 3)

You have an Azure Stack Hub integrated system.

You need to ensure that you can recover managed and unmanaged disks that are deleted from user subscriptions.

Which three actions should you perform in sequence? To answer, move the appropriate actions from the list of actions to the answer area and arrange them in the correct order.



## Actions

**Answer Area**

## Modify the retention period for deleted storage accounts

Create a storage account that uses the Cool access tier

Open the configurations for the Storage resource provider

## Connect to the administrator portal

### Connect to the user portal

Connect to the privileged endpoint (PEP)

Open the configurations for the Compute resource provider

A. Mastered  
B. Not Mastered

**Answer: A**

**Explanation:**

Reference:

<https://docs.microsoft.com/en-us/azure-stack/operator/azure-stack-manage-storage-accounts?view=azs-2008>

## NEW QUESTION 8

- (Exam Topic 3)

You have an Azure Stack Hub integrated system that is disconnected from the Internet. The integrated system is registered to an Azure Active Directory (Azure AD) tenant named contoso.com.

You need to download the latest Ubuntu image for Azure Stack Hub Marketplace.

How should you complete the PowerShell script? To answer, drag the appropriate cmdlets to the correct targets. Each cmdlet may be used once, more than once, or not at all. You may need to drag and split the bar between panes to scroll to view content.

NOTE: Each correct selection is worth one point.

### Answer Area

```
-Environment AzureCloud -Tenant 'contoso.com'

Add-AzureRmEnvironment
Connect-AzureRmAccount
Select-AzureRmContext
Set-AzureRmEnvironment

Install-Module -Name
Azs.AzureBridge.Admin
Azs.Commerce.Admin
Azs.Gallery.Admin
Azs.Syndication.Admin

$MarketplaceItems =
Add-AzsGalleryItem
Export-AzsMarketplaceItem
Import-AzsMarketplaceItem
Select-AzsMarketplaceItem

$MarketplaceItems |
-RepositoryDir "D:\MarketplaceItems"
Add-AzsGalleryItem
Export-AzsMarketplaceItem
Import-AzsMarketplaceItem
Select-AzsMarketplaceItem
```

A. Mastered  
B. Not Mastered

**Answer: A**

**Explanation:**

Reference:

<https://docs.microsoft.com/en-us/azure-stack/operator/azure-stack-download-azure-marketplace-item?view=azs>

**NEW QUESTION 9**

- (Exam Topic 3)

Note: This question is part of a series of questions that present the same scenario. Each question in the series contains a unique solution that might meet the stated goals. Some question sets might have more than one correct solution, while others might not have a correct solution.

After you answer a question in this section, you will NOT be able to return to it. As a result, these questions will not appear in the review screen.

You have an Azure Stack Hub integrated system that connects to the Internet. The integrated system uses an Enterprise Agreement (EA) for licensing.

You are creating an Azure Resource Manager template to generate a marketplace item for a virtual machine that runs Windows Server 2019 Datacenter and a custom application.

You need to ensure that Windows Server is licensed by using the bring-your-own-license model. Solution: You add licenseType: None to the Azure Resource Manager template.

Does this meet the goal?

- A. Yes
- B. No

**Answer:** B

**Explanation:**

Reference:

<https://docs.microsoft.com/en-us/azure-stack/operator/azure-stack-windows-server-faq?view=azs-2008&tabs=az>

**NEW QUESTION 10**

- (Exam Topic 3)

Your company is a Cloud Solution Provider (CSP).

You are planning the deployment of a multitenant Azure Stack Hub integrated system that will host internal company workloads and customer workloads.

You need to register the integrated system.

Which type of Azure subscription should you use for the registration?

- A. Azure Partner Shared Services (APSS)
- B. Enterprise Agreement (EA)
- C. Pay-As-You-Go (PAYG)
- D. CSP

**Answer:** A

**Explanation:**

Reference:

<https://docs.microsoft.com/en-us/azure-stack/operator/azure-stack-add-manage-billing-as-a-csp?view=azs-2008>

**NEW QUESTION 10**

- (Exam Topic 3)

You have an Azure Stack Hub integrated system that is disconnected from the Internet. You need to collect diagnostic logs, but do not have access to an SMB share.

Which four actions should you perform in sequence? To answer, move the appropriate actions from the list of actions to the answer area and arrange them in the correct order.

Actions

Run the Unlock-SupportSession cmdlet

Connect to the privileged endpoint (PEP)

From the administrator portal, create an Azure Storage account and a file share

Create a shared access signature (SAS)

Run the Get-AzureStackLog cmdlet

From the administrator portal, create an Azure Storage account and a container

Create an app registration

Answer Area

>

<

↑

↓

- A. Mastered
- B. Not Mastered

Answer: A

Explanation:

Reference:  
<https://docs.microsoft.com/en-us/azure-stack/operator/azure-stack-get-azurestacklog?view=azs-2008>

NEW QUESTION 11

- (Exam Topic 3)

You have an Azure Stack Hub integrated system that is disconnected from the Internet. During an update, an error occurs that prevents you from accessing the administrator portal.

While troubleshooting the issue, a Microsoft Support Engineer requests that you collect and send the relevant logs.

Which three actions should you perform in sequence? To answer, move the appropriate actions from the list of actions to the answer area and arrange them in the correct order.

Actions

Connect to the privileged endpoint (PEP)

Run the `Test-AzureStack` cmdlet

Unlock the privileged endpoint (PEP)

From a workstation that has internet access, upload the logs to the location specified by the Microsoft Support Engineer

Run the `Get-AzureStackLog` cmdlet and specify a local file share to collect the logs of events that occurred during the update period

Answer Area

>

<

↑

↓

- A. Mastered
- B. Not Mastered

Answer: A

Explanation:

Reference:  
<https://docs.microsoft.com/en-us/azure-stack/operator/azure-stack-get-azurestacklog?view=azs-2008>

NEW QUESTION 12

- (Exam Topic 3)

Note: This question is part of a series of questions that present the same scenario. Each question in the series contains a unique solution that might meet the stated goals. Some question sets might have more than one correct solution, while others might not have a correct solution.

After you answer a question in this section, you will NOT be able to return to it. As a result, these questions will not appear in the review screen.

You have an Azure Stack Hub integrated system.

The security department at your company wants a list of all the users who can manage the integrated system from the privileged endpoint (PEP).

You need to create the list.

Solution: From a privileged endpoint (PEP) session, you run the `Get-AzureStackStampInformation` cmdlet.

Does this meet the goal?

- A. Yes
- B. No

Answer: B

NEW QUESTION 14

- (Exam Topic 3)

You have an Azure Stack Hub integrated system that uses an Azure Active Directory (Azure AD) tenant named `contoso.onmicrosoft.com` as an identity provider. You need to ensure that users from an Azure AD tenant named `fabrikam.onmicrosoft.com` can authenticate to the integrated system.

Which four actions should you perform in sequence? To answer, move the appropriate actions from the list of actions to the answer area and arrange them in the correct order.



## Actions

## Answer Area

- Import the Directory module
- Download AzureStack-Tools
- From the fabrikam.onmicrosoft.com Azure AD tenant, register the Azure Stack Hub directory
- Configure the contoso.onmicrosoft.com Azure AD tenant to allow sign-ins from fabrikam.onmicrosoft.com
- Generate a service principal for identity synchronization



- A. Mastered
- B. Not Mastered

**Answer:** A

### Explanation:

Reference:

<https://docs.microsoft.com/en-us/azure-stack/operator/azure-stack-enable-multitenancy?view=azs-2008>

## NEW QUESTION 15

- (Exam Topic 3)

In which three situations should you update the registration of an Azure Stack Hub integrated system? Each correct answer presents a complete solution.

NOTE: Each correct selection is worth one point.

- A. when you add or remove nodes for capacity-based billing
- B. when you change the billing model
- C. when you add or remove nodes for consumption-based billing
- D. when you renew an annual capacity subscription
- E. when you enable Azure Stack Hub for multitenancy
- F. when you update the Azure Active Directory (Azure AD) home directory

**Answer:** ABD

### Explanation:

Reference:

<https://docs.microsoft.com/en-us/azure-stack/operator/azure-stack-registration?view=azs-2008&tabs=az1%2Caz2>

## NEW QUESTION 18

- (Exam Topic 3)

You have an Azure Stack Hub integrated system that uses an Azure Active Directory (Azure AD) identity provider.

You have a computer that runs Windows 10. You use the computer to manage the integrated system.

You create a custom marketplace item on the computer.

You need to publish the item to Azure Stack Hub Marketplace. You create a storage account.

What should you create next?

- A. a container that has a public access level of private
- B. a file share that has the performance tier set to Hot
- C. a container that has a public access level of blob
- D. a file share that has the performance tier set to Transaction optimized

**Answer:** C

### Explanation:

Reference:

<https://docs.microsoft.com/en-us/azure-stack/operator/azure-stack-create-and-publish-marketplace-item?view=azs-2008>

## NEW QUESTION 21

- (Exam Topic 3)

You have an Azure Stack Hub integrated system that is enabled for multitenancy and uses an Azure Active Directory (Azure AD) tenant named fabrikam.com as an identity provider.

The integrated system has the following guest directory tenants onboarded and enabled for multitenancy: > com

- > onmicrosoft.com
- > onmicrosoft.com



You need to verify whether all the guest directory tenants are registered properly.  
 How should you complete the PowerShell script? To answer, drag the appropriate cmdlet to the correct targets. Each cmdlet may be used once, more than once, or not at all. You may need to drag the split bar between panes or scroll to view content.  
 NOTE: Each correct selection is worth one point.

#### Answer Area

\$ArmEndpoint =

\$DirectoryTenantName =

\$GuestDirectorySettings =

AdminResourceManagerEndpoint \$ArmEndpoint -DirectoryTenantName \$DirectoryTenantName

Write-Output -InputObject "Healthy guest directory tenants:"

\$GuestDirectorySettings.DirectoryTenants | Where status -EQ 'Healthy' | Select -Object -Property TenantName, TenantId, Status | Format-Table

Write-Output -InputObject "Unhealthy guest directory tenants:"

\$GuestDirectorySettings.DirectoryTenants | Where status -NE 'Healthy' | Select -Property TenantName, TenantId, Status, | Format-Table

- A. Mastered
- B. Not Mastered

Answer: A

#### Explanation:

Reference:

<https://docs.microsoft.com/en-us/azure-stack/operator/azure-stack-enable-multitenancy?view=azs-2008>

#### NEW QUESTION 24

- (Exam Topic 3)

You plan to deploy two Azure Stack Hub integrated systems named AZStack1 and AZStack2. AZStack1 must meet the following requirements:

- > Connect to the Internet.
- > Have minimal capital expenditures.
- > Use the minimum number of on-premises servers for identity.
- > Have no existing licenses for Windows virtual machines deployed. AZStack2 must meet the following requirements:
- > Be disconnected from the Internet.
- > Use the minimum number of on-premises servers for identity.
- > Support the syndication of Azure Stack Hub Marketplace items.

Which identity provider and licensing model should you use for each integrated system? To answer, select the appropriate options in the answer area.

NOTE: Each correct selection is worth one point.

#### Answer Area

AZStack1:

AZStack2:

- A. Mastered
- B. Not Mastered

Answer: A

#### Explanation:

Reference:

<https://docs.microsoft.com/en-us/azure-stack/operator/azure-stack-connected-deployment?view=azs-2008>

#### NEW QUESTION 28

- (Exam Topic 3)  
You have an Azure Stack Hub integrated system.  
You need to give a new operator access to the privileged endpoint (PEP) as soon as possible. Which two actions should you perform? Each correct answer presents part of the solution. NOTE: Each correct selection is worth one point.

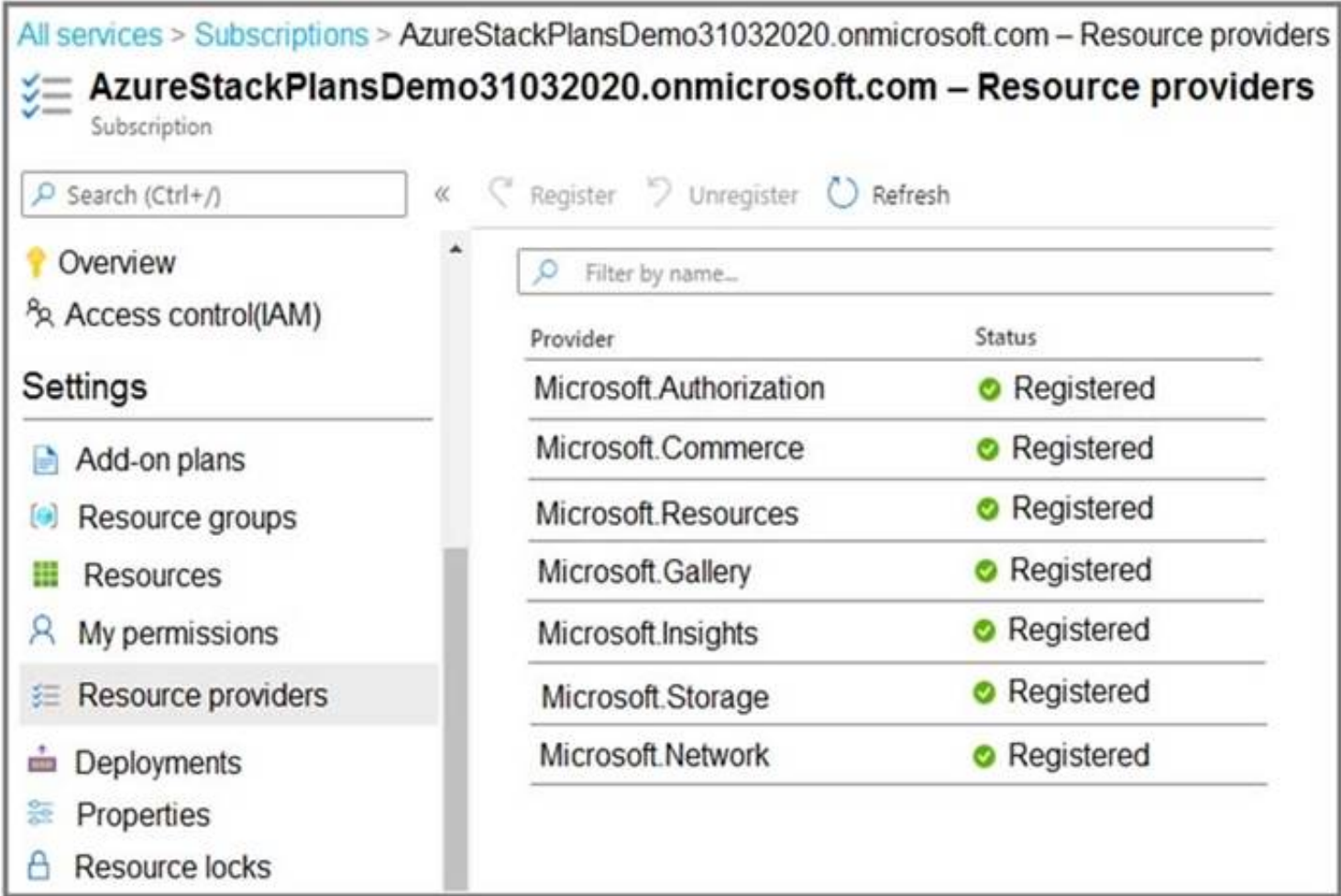
A. Run the New-CloudAdminUser cmdlet.  
B. Run the New-AzureADUser cmdlet.  
C. Connect to the PEP.  
D. Connect to and unlock the PEP.  
E. Connect to the administrator management endpoint.

Answer: AC

Explanation:  
Reference:  
<https://docs.microsoft.com/en-us/azure-stack/operator/azure-stack-privileged-endpoint?view=azs-2008>

NEW QUESTION 31

- (Exam Topic 3)  
You open the Resource providers blade for a user subscription as shown in the following exhibit.



Use the drop-down menus to select the answer choice that completes each statement based on the information presented in the graphic.  
NOTE: Each correct selection is worth one point.

Users of the user subscription can deploy [answer choice] successfully.

▼

an App Service plan

an event hub

a key vault

a virtual network

You must make the [answer choice] resource provider available before users of the user subscription can create virtual machines.

▼

Microsoft.Compute

Microsoft.KeyVault

Microsoft.Subscription

Microsoft.VirtualMachineImages

- A. Mastered  
B. Not Mastered

Answer: A

Explanation:  
Graphical user interface, text, application, email Description automatically generated  
Reference:  
<https://docs.microsoft.com/en-us/azure/azure-resource-manager/management/azure-services-resource-providers>

NEW QUESTION 33

.....

## Thank You for Trying Our Product

### We offer two products:

1st - We have Practice Tests Software with Actual Exam Questions

2nd - Questons and Answers in PDF Format

### AZ-600 Practice Exam Features:

- \* AZ-600 Questions and Answers Updated Frequently
- \* AZ-600 Practice Questions Verified by Expert Senior Certified Staff
- \* AZ-600 Most Realistic Questions that Guarantee you a Pass on Your FirstTry
- \* AZ-600 Practice Test Questions in Multiple Choice Formats and Updatesfor 1 Year

**100% Actual & Verified — Instant Download, Please Click**  
**[Order The AZ-600 Practice Test Here](#)**